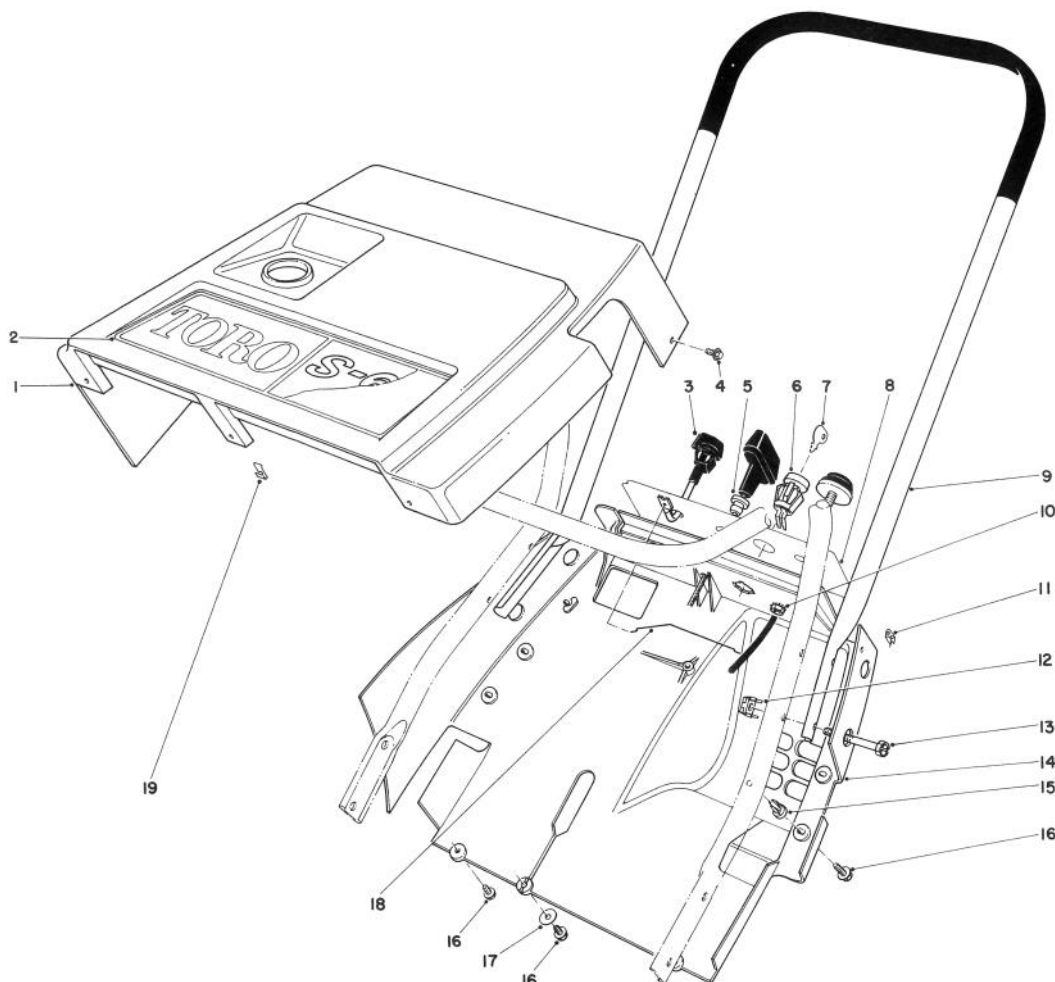


PARTS CATALOG

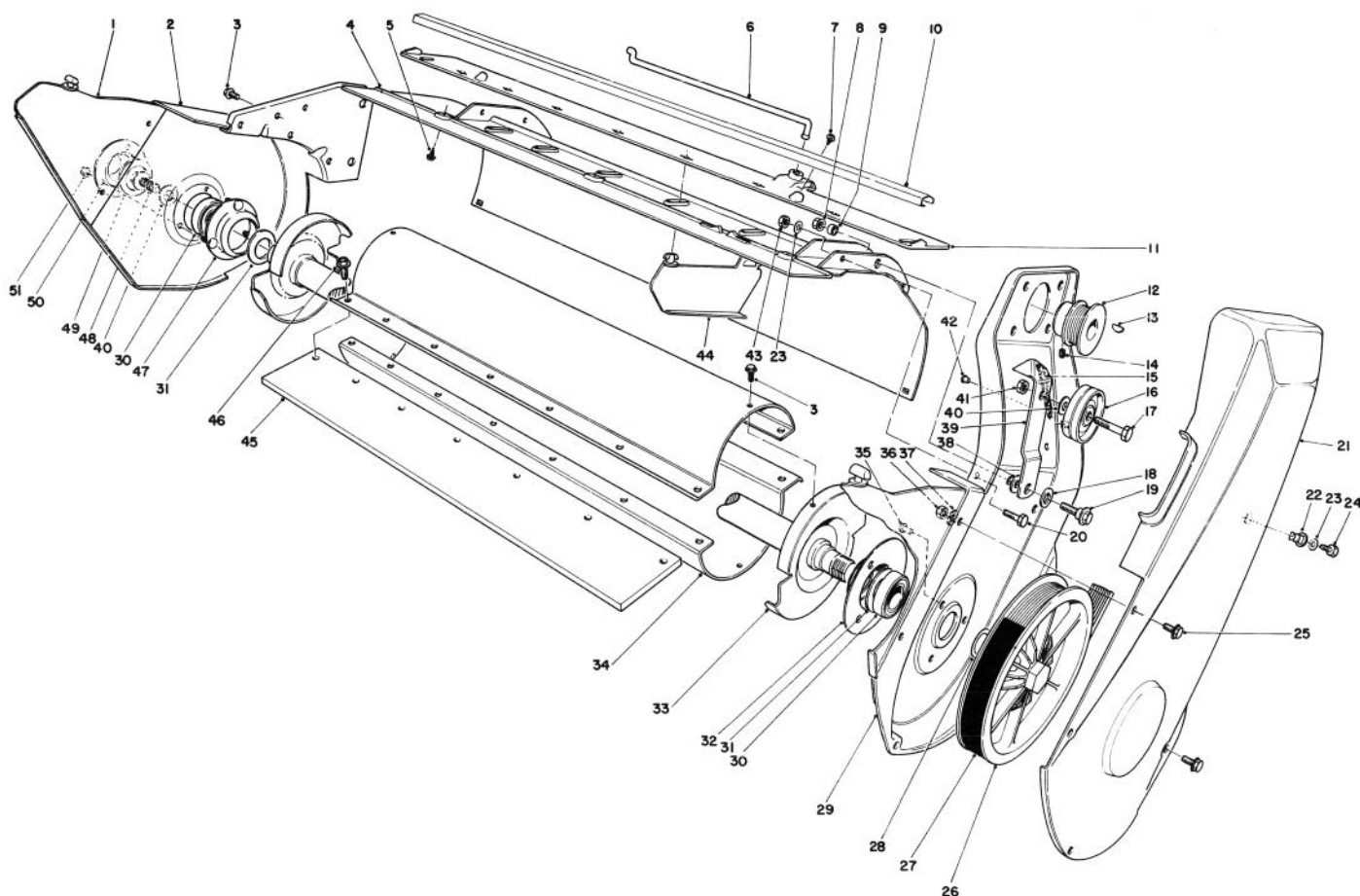
TORO S-620 RECOIL



SHROUD & HANDLE ASSEMBLY

| Ref. No. | Part No. | Description | No. Used |
|----------|----------|--------------------------|----------|
| 1 | 39-0890 | Upper Shroud | 1 |
| 2 | 52-7070 | Decal — Toro | 1 |
| 3 | 39-0560 | Control Assembly — Choke | 1 |
| 4 | 32104-76 | Self-Tapping Screw | 2 |
| 5 | 23-7470 | Guide — Starter Rope | 1 |
| 6 | 40-5940 | Switch | 1 |
| 7 | 62-7770 | Key | 1 |
| 8 | 52-7050 | Decal — Control Panel | 1 |
| 9 | 49-1370 | Upper Handle | 1 |
| 10 | 32149-2 | Locknut | 1 |

| Ref. No. | Part No. | Description | No. Used |
|----------|----------|------------------------|----------|
| 11 | 49-1490 | Nut | 2 |
| 12 | 3290-225 | Nut — Retained | 4 |
| 13 | 32105-11 | Hex Head Machine Screw | 4 |
| 14 | 49-1610 | Lower Shroud | 1 |
| 15 | 3290-453 | Nut — Push In | 3 |
| 16 | 32144-34 | Self-Tapping Screw | 6 |
| 17 | 3256-61 | Washer | 1 |
| 18 | 39-8180 | Control Wire | 1 |
| 19 | 52-3300 | Nut | 3 |



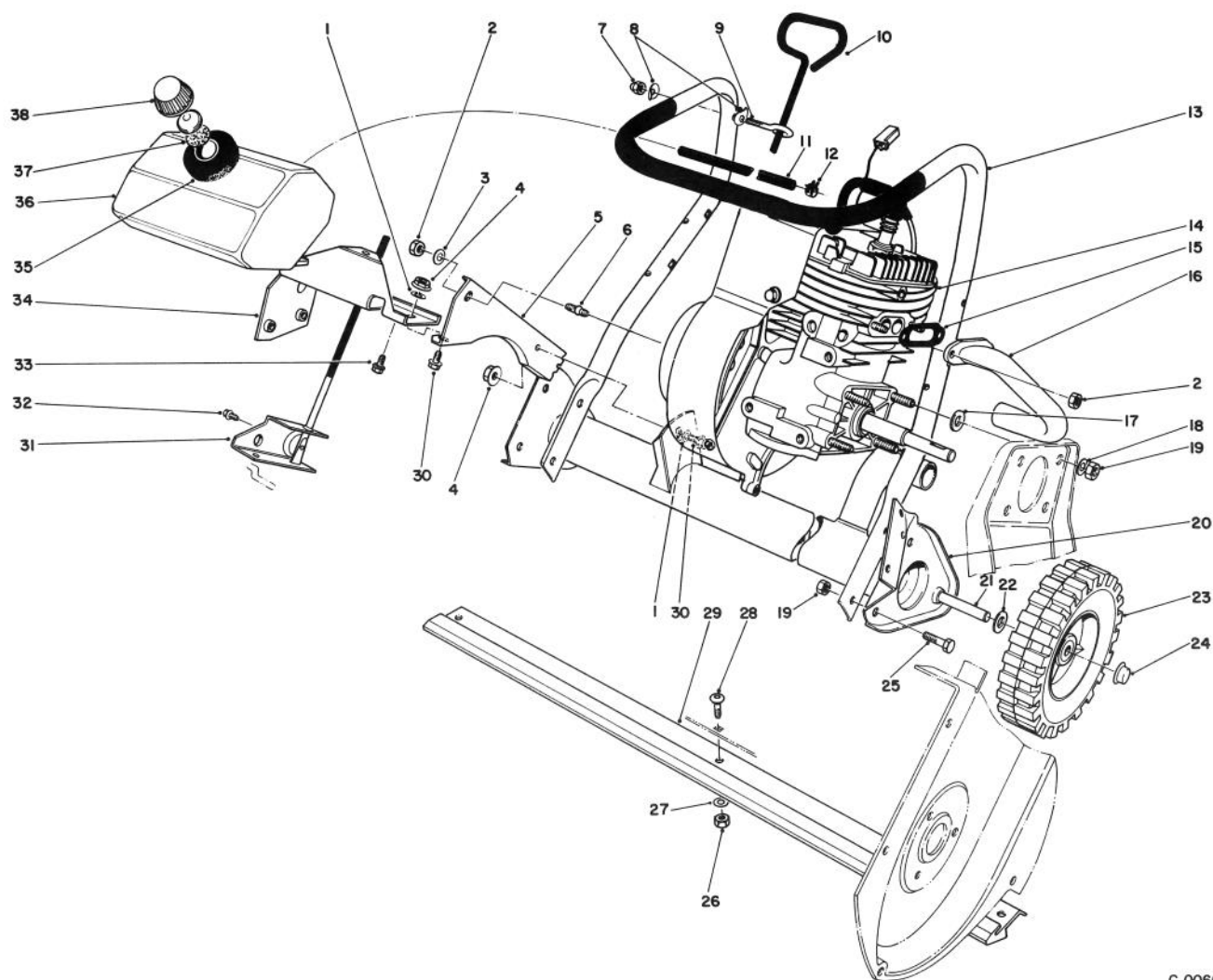
C-0065-89

LOWER MAIN FRAME ASSEMBLY

| Ref. No. | Part No. | Description | No. Used |
|----------|----------|---------------------------|----------|
| 1 | 52-7080 | Vane — Outside | 2 |
| 2 | 52-9100 | Side Plate — Right | 1 |
| 3 | 32144-4 | Screw | 6 |
| 4 | 52-7170 | Housing | 1 |
| 5 | 32144-34 | Self-Tapping Screw | 3 |
| 6 | 52-7090 | Linkage — Vane Adjustment | 1 |
| 7 | 32104-77 | Self-Tapping Screw | 2 |
| 8 | 32128-25 | Flange Nut | 1 |
| 9 | 51-2950 | Spacer | 1 |
| 10 | 66-6520 | Moulding — Warning | 1 |
| 11 | 66-6530 | Vane Mount | 1 |
| 12 | 25-6400 | Engine Pulley | 1 |
| 13 | 3257-3 | Woodruff Key | 1 |
| 14 | 3245-41 | Set Screw | 2 |
| 15 | 26-9730 | Idler Spring | 1 |
| 16 | 25-5880 | Idler Pulley | 1 |
| 17 | 323-9 | Capscrew | 1 |
| 18 | 25-5640 | Washer | 1 |
| 19 | 27-0410 | Shoulder Screw | 1 |
| 20 | 321-4 | Capscrew | 5 |
| 21 | 54-9940 | Drive Cover | 1 |
| 22 | 32117-3 | Grommet | 1 |
| 23 | 3256-22 | Washer | 6 |
| 24 | 32104-10 | Screw — Self Tap | 1 |
| 25 | 32105-2 | Machine Screw | 6 |
| 26 | 49-1530 | Rotor Pulley | 1 |
| 27 | 25-6430 | Belt | 1 |

| Ref. No. | Part No. | Description | No. Used |
|----------|----------|-----------------------------------------------|----------|
| 28 | 26-0970 | Washer | 1 |
| 29 | 33-2130 | Side Plate Left | 1 |
| 30 | 38-7820 | Ball Bearing | 2 |
| 31 | 52-7280 | Thrust Washer | 2 |
| 32 | 38-8620 | Bearing Flange | 1 |
| 33 | 52-9120 | Drive Shaft & End Cap | 1 |
| 34 | 23-3190 | Shell — Rotor | 2 |
| 35 | 3292-8 | Rivet | 3 |
| 36 | 3296-2 | Locknut | 6 |
| 37 | 3256-61 | Washer — Control Pivot | 4 |
| 38 | 5-4460 | Washer | 1 |
| 39 | 26-8990 | Idler Arm | 1 |
| 40 | 3256-24 | Washer | 2 |
| 41 | 3296-39 | Locknut | 1 |
| 42 | 29-7430 | Eyelet | 1 |
| 43 | 32152-4 | Locknut | 5 |
| 44 | 52-7060 | Vane | 7 |
| 45 | 23-3730 | Rotor Blade | 2 |
| 46 | 37-0370 | Screw | 14 |
| 47 | 52-9110 | Bearing Flange | 1 |
| 48 | 3234-25 | Screw — Cap Hex Hd. Flange | 1 |
| 49 | 52-7270 | Washer — Rubber | 1 |
| 50 | 52-7290 | Retainer Bearing | 1 |
| 51 | 32111-14 | Nut — Cap | 3 |
| * | 13-1689 | Vane Mount Assembly (Incl. Ref. #7, 10, & 11) | 1 |

* Not Illustrated



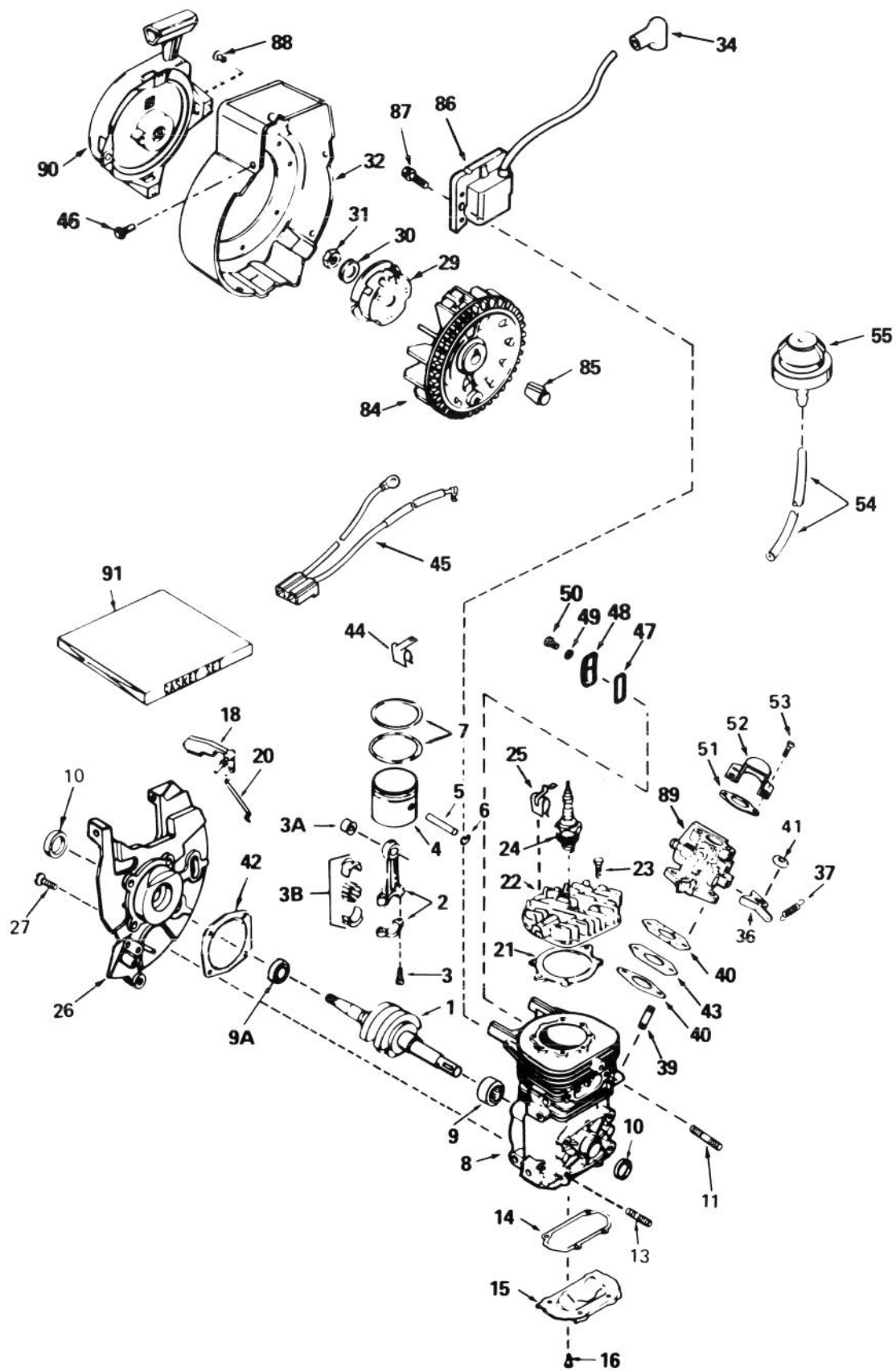
C-0066-89

ENGINE ASSEMBLY

| Ref. No. | Part No. | Description | No. Used |
|----------|----------|-----------------------|----------|
| 1 | 3290-244 | Washer | 2 |
| 2 | 32152-4 | Locknut | 3 |
| 3 | 7-3315 | Washer | 1 |
| 4 | 32128-30 | Flange Nut | 2 |
| 5 | 49-1570 | Support — Engine | 1 |
| 6 | 38-8710 | Stud | 1 |
| 7 | 32111-7 | Cap Nut | 1 |
| 8 | 3-7501 | Washer | 2 |
| 9 | 52-7120 | Eye Bolt | 1 |
| 10 | 49-1600 | Rod — Vane Adjustment | 1 |
| 11 | 49-2480 | Gas Line | 1 |
| 12 | 2412-86 | Clamp | 2 |
| 13 | 49-1360 | Lower Handle | 1 |
| 14 | | Engine | 1 |
| 15 | 23-3810 | Gasket — Exhaust Pipe | 1 |
| 16 | 52-7200 | Exhaust Pipe | 1 |
| 17 | 4-2390 | Spacer | 4 |
| 18 | 3256-23 | Washer | 4 |
| 19 | 3296-29 | Locknut | 10 |

| Ref. No. | Part No. | Description | No. Used |
|----------|----------|---------------------------|----------|
| 20 | 49-1540 | Muffler Assembly | 1 |
| 21 | 27-0060 | Axle | 1 |
| 22 | 3256-24 | Washer | 2 |
| 23 | 23-3250 | Wheel | 2 |
| 24 | 3290-320 | Retainer — Push On | 2 |
| 25 | 322-3 | Capscrew | 6 |
| 26 | 3296-56 | Locknut | 3 |
| 27 | 3256-22 | Washer — Flat | 3 |
| 28 | 52-7130 | Button Hd. Capscrew | 3 |
| 29 | 23-3170 | Scraper | 1 |
| 30 | 3234-23 | Screw — Flange | 2 |
| 31 | 39-0840 | Bracket — Vane Adjustment | 1 |
| 32 | 12-5450 | Screw — Special | 1 |
| 33 | 32144-4 | Screw | 3 |
| 34 | 49-1550 | Support — Gas Tank | 1 |
| 35 | 25-1610 | Foam Pad | 1 |
| 36 | 39-8670 | Gas Tank | 1 |
| 37 | 20-4620 | Gasket | 1 |
| 38 | 42-0680 | Gas Cap (Incl. Ref. #36) | 1 |

ENGINE TECUMSEH MODEL NO. AH-600 TYPE 1622-N

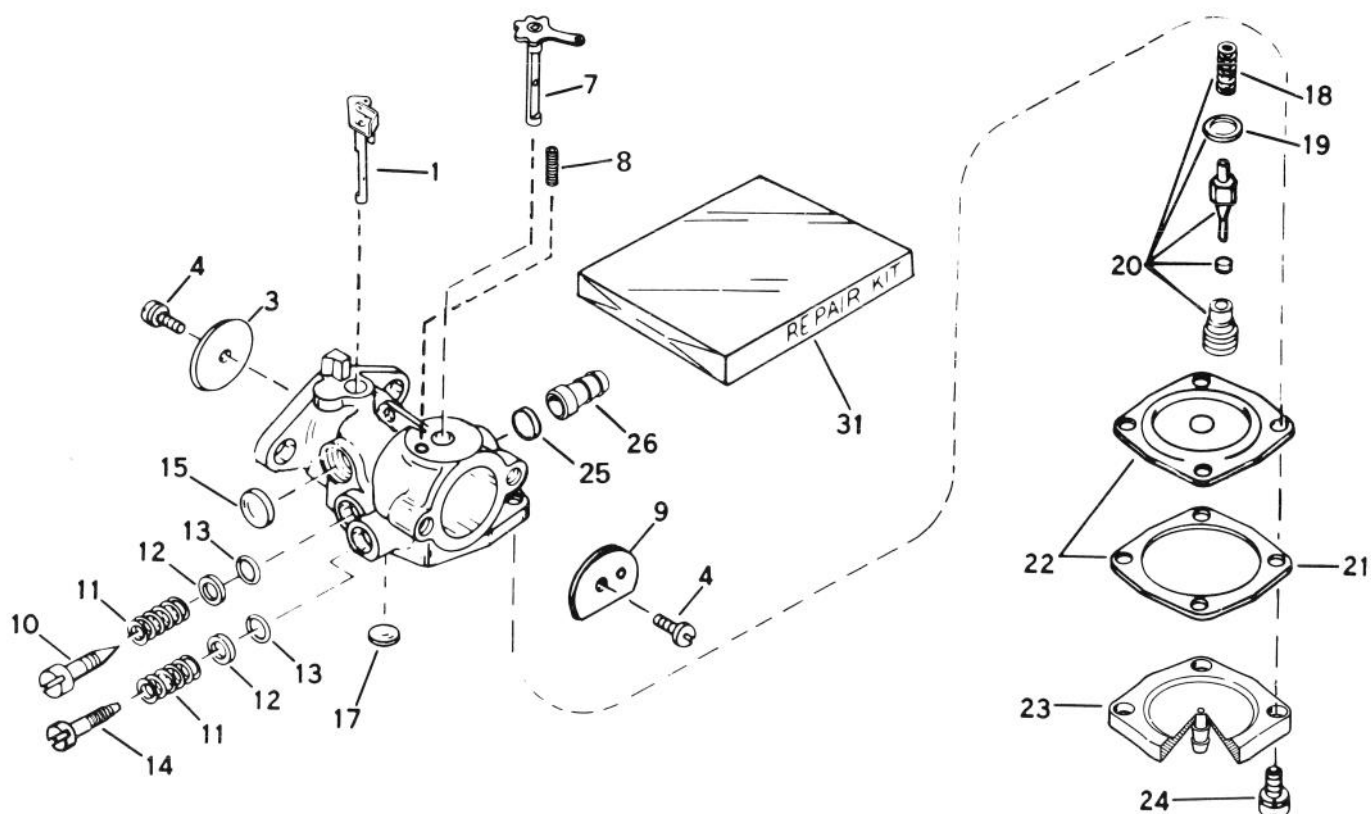


ENGINE TECUMSEH MODEL NO. AH-600 TYPE 1622-N

| Ref. No. | Part No. | Description | No. Used |
|----------|----------|------------------------------------------------------------------------------|----------|
| 1 | 290607 | Crankshaft | 1 |
| 2 | 310235B | Rod Assy. — Connecting (Incl. Ref. #3, 3A & 3B) | 1 |
| 3 | 650633 | Screw — Connecting Rod | 2 |
| 3A | 530104A | Bearing — Cartridge | 1 |
| 3B | 530150 | Bearing & Liner Set — Needle (37 needles) | 1 |
| 4 | 310283 | Piston | 1 |
| 5 | 310264 | Pin — Piston | 1 |
| 6 | 310167 | Ring — Piston Pin Retaining | 2 |
| 7 | 310190 | Ring Set — Piston | 1 |
| 8 | | Block Assy. — Cylinder (Order short block if replacement is required.) | 1 |
| 9 | 530105 | Bearing — Needle | 1 |
| 9A | 530110 | Bearing — Ball | 1 |
| 10 | 510319 | Seal — Crankshaft | 2 |
| 11 | 650883 | Stud — Exhaust | 2 |
| 13 | 650796 | Stud — Mounting | 4 |
| 14 | *510323 | Gasket — Cover | 1 |
| 15 | 570644 | Plate — Cover | 1 |
| 16 | 650579 | Screw — Pan Flex Hd. | 4 |
| 18 | 490291A | Vane Assy. — Air | 1 |
| 20 | 490294 | Link — Governor | 1 |
| 21 | *510274 | Gasket — Cylinder Head | 1 |
| 22 | 250240A | Head — Cylinder | 1 |
| 23 | 650477 | Screw — Pan Flex Hd. | 5 |
| 24 | 611049 | Plug — Spark (RCJ-8Y or equivalent) | 1 |
| 25 | 611034 | Clip — Speed ("U" type) | 1 |
| 26 | 350396 | Base Assy. — Blower Housing (Incl. Ref. #10) | 1 |
| 27 | 650911 | Screw — Torx Pan Hd. | 4 |
| 29 | 590551 | Cup — Starter | 1 |
| 30 | 650815 | Washer — Spring | 1 |

| Ref. No. | Part No. | Description | No. Used |
|----------|----------|--------------------------------------------------------|----------|
| 31 | 650390 | Nut — Flywheel | 1 |
| 32 | 350425 | Housing — Blower | 1 |
| 34 | 610118 | Cover — Spark Plug | 1 |
| 36 | 570645 | Lever — Adjusting | 1 |
| 37 | 570646 | Spring — Adjusting Lever | 1 |
| 39 | 650527 | Stud — Carburetor | 2 |
| 40 | *510326 | Gasket — Carburetor | 2 |
| 41 | 650457 | Nut — Hex | 2 |
| 42 | *510292 | Gasket — Housing Base | 1 |
| 43 | 570438A | Spacer | 1 |
| 44 | 29443 | Clip — Spring | 1 |
| 45 | 611131 | Harness — Wire | 1 |
| 46 | 650356 | Screw — Hex Washer Hd. Powerlok Thread | 4 |
| 47 | *510325 | Gasket — Cover | 1 |
| 48 | 570647 | Cover Assy. — Compression Release | 1 |
| 49 | 650838 | Washer — Flat No. 10 | 1 |
| 50 | 650579 | Screw — Pan Flex Hd. | 1 |
| 51 | 510206 | Gasket | 1 |
| 52 | 570434 | Baffle — Air | 1 |
| 53 | 650229 | Screw — Rd. Hd. Sems | 2 |
| 54 | 32180C | Line — Primer | 1 |
| 55 | 570629A | Primer Assy. | 1 |
| 84 | 611112 | Flywheel | 1 |
| 85 | 611032 | Sleeve — Flywheel | 1 |
| 86 | 34443A | Solid State Assembly | 1 |
| 87 | 650814 | Screw — Hex Hd. Sems | 2 |
| 88 | | Rivet — Pop (3/16" Dia.) (Can be purchased locally) | 4 |
| 89 | 632142A | Carburetor (Incl. Ref. #40) | 1 |
| 90 | 590537 | Starter Assy. — Rewind | 1 |
| 91 | 510324A | Gasket Set (Incl. Items Marked *) | 1 |

*Indicates parts included in Gasket Set, Ref. #91.

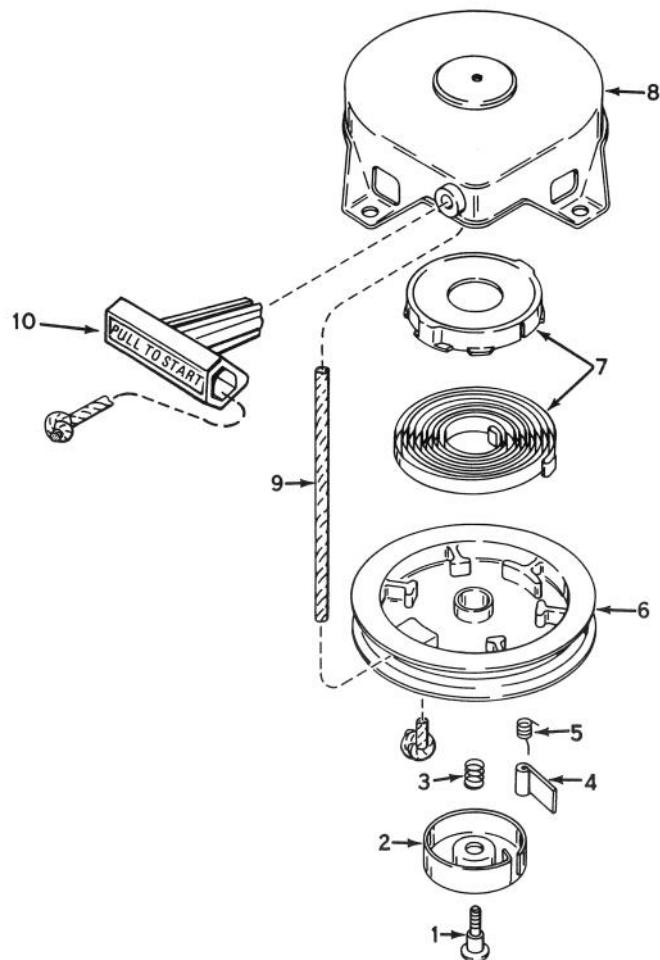


CARBURETOR NO. 632142A

| Ref. No. | Part No. | Description | No. Used |
|----------|----------|----------------------------------|----------|
| 1 | 632130 | Shaft & Lever Assy. — Throttle | 1 |
| 3 | 631036 | Shutter — Throttle | 1 |
| 4 | 650506 | Screw — Throttle & Choke Shutter | 1 |
| 7 | 631888 | Shaft & Lever Assy. — Choke | 1 |
| 8 | 630735 | Spring — Choke Positioning | 1 |
| 9 | 31837 | Shutter — Choke | 1 |
| 10 | 631562 | Screw — Idle Adjustment | 1 |
| 11 | 630738 | Spring — Adjustment Screw | 1 |
| 12 | 630739 | Washer — Adjustment Screw | 1 |
| 13 | *630740 | "O" Ring — Adjustment Screw | 1 |
| 14 | 630898 | Screw — Main Adjustment | 1 |
| 15 | *630748 | Plug — Welch | 1 |

| Ref. No. | Part No. | Description | No. Used |
|----------|----------|-------------------------------------------------------------|----------|
| 17 | *630746 | Plug — Welch | 1 |
| 18 | 631049 | Spring — Valve | 1 |
| 19 | 630742 | Gasket — Valve Seat | 1 |
| 20 | *630932A | Inlet Needle — Seat, Spring & Gasket Assy. (Incl. #18 & 19) | 1 |
| 21 | 630750 | Gasket — Diaphragm | 1 |
| 22 | *630978 | Diaphragm Assy. (Incl. Ref. #21) | 1 |
| 23 | 632127 | Cover — Diaphragm | 1 |
| 24 | 650817 | Screw — Diaphragm Cover | 1 |
| 25 | 632163 | Disk | 1 |
| 26 | 632164 | Fitting — Fuel Inlet | 1 |
| 31 | 631893 | Repair Kit (Incl. Items Marked *) | 1 |

*Indicates Parts Included in Repair Kit Ref. #31.



REWIND STARTER NO. 590537

| Ref. No. | Part No. | Description | No. Used |
|----------|----------|-------------------|----------|
| 1 | 590409A | Screw — Retainer | 1 |
| 2 | 590410 | Retainer — R.H. | 1 |
| 3 | 590411 | Spring — Brake | 1 |
| 4 | 590148 | Dog — Starter | 1 |
| 5 | 590412 | Spring — R.H. Dog | 1 |

| Ref. No. | Part No. | Description | No. Used |
|----------|----------|-------------------------|----------|
| 6 | 590413A | Pulley | 1 |
| 7 | 590414 | Spring & Keeper Assy. | 1 |
| 8 | 590536 | Housing Assy. — Starter | 1 |
| 9 | 590535 | Rope — Starter | 1 |
| 10 | 590452 | Handle Assy. — Starter | 1 |

IDENTIFICATION AND ORDERING

MODEL AND SERIAL NUMBERS

The S-620 has two identification numbers. A model number and a serial number. The two numbers are stamped on a decal which is located on right side of rotor housing, just ahead of the right wheel. In any correspondence concerning the S-620, supply model and serial numbers to assure that correct information and replacement parts are obtained.

To order replacement parts from an Authorized TORO Service Dealer, supply the following information:

1. Model and serial numbers of the S-620
2. Part number, description, and quantity of part(s) desired.

Note: Do not order by reference number if a parts catalog is being used; use the PART NUMBER.

The Toro Promise

A TWO YEAR LIMITED WARRANTY

The Toro Company promises to repair your TORO Product if defective in materials or workmanship. The following time periods from the date of purchase apply:

Residential Product 2 Years
Residential Products Used Commercially 45 Days

The costs of parts and labor are included, but the customer pays the transportation costs. Just return any residential product to an Authorized TORO Service Dealer or TORO Distributor.

Should you feel your TORO Product is defective and wish to rely on The Toro Promise, the following procedure is recommended:

1. Contact any Authorized TORO Service Dealer, TORO Master Service Dealer, or TORO Distributor (the Yellow Pages of your telephone directory is a good reference source).
2. He will either instruct you to return the product to him or recommend another Authorized TORO Service outlet which might be more convenient.
3. Bring the product along with your original sales slip, or other evidence of purchase date, to the service dealer.
4. The servicing dealer will inspect the unit, advise you whether the product is defective and, if so, make all repairs necessary to correct the defect without extra charge to you.

If for any reason you are dissatisfied with the dealer's analysis of the defect or the service performed, you may contact us.

Write:

TORO Consumer Service Department
8111 Lyndale Avenue South
Minneapolis, Minnesota 55420

The above remedy of product defects through repair by an Authorized TORO Service Dealer is the purchaser's sole remedy for any defect.

THERE IS NO OTHER EXPRESS WARRANTY. ALL IMPLIED WARRANTIES OF MERCHANTABILITY AND

FITNESS FOR USE ARE LIMITED TO THE DURATION OF THE EXPRESS WARRANTY.

Some states do not allow limitations on how long an implied warranty lasts, so the above limitation may not apply to you.

This warranty applies only to parts or components which are defective and does not cover repairs necessary due to normal wear, misuse, accidents, or lack of proper maintenance. Regular, routine maintenance of the unit to keep it in proper operating condition is the responsibility of the owner.

All warranty repairs reimbursable under The Toro Promise must be performed by an Authorized TORO Service Dealer using Toro approved replacement parts.

Repairs or attempted repairs by anyone other than an Authorized TORO Service Account are not reimbursable under The Toro Promise. In addition, these unauthorized repair attempts may result in additional malfunctions, the correction of which is not covered by warranty.

THE TORO COMPANY IS NOT LIABLE FOR INDIRECT, INCIDENTAL OR CONSEQUENTIAL DAMAGES IN CONNECTION WITH THE USE OF THE PRODUCT INCLUDING ANY COST OR EXPENSE OF PROVIDING SUBSTITUTE EQUIPMENT OR SERVICE DURING PERIODS OF MALFUNCTION OR NON-USE.

Some states do not allow the exclusion or limitation of incidental or consequential damages, so the above limitation or exclusion may not apply to you.

This warranty gives you specific legal rights, and you may also have other rights which vary from state to state.

COUNTRIES OTHER THAN THE UNITED STATES OR CANADA

Customers who have purchased TORO products exported from the United States or Canada should contact their TORO Distributor (Dealer) to obtain guarantee policies for your country, province or state. If for any reason

you are dissatisfied with your Distributor's service or have difficulty obtaining guarantee information, contact the TORO importer. If all other remedies fail, you may contact us at The Toro Company.