



Front Replacement Mower Groundsmaster® 580-D

Model No. 30592 - 260000001 and up.

Parts Catalog

Ordering Replacement Parts

To order replacement parts, please supply the part number, the quantity, and the description of each part desired.

Understanding Reference Numbers

Each identified part in an illustration has a reference number. The reference number for a part also appears in the parts list, along with other information about the part.

This catalog uses two special reference number formats, one to indicate parts in a service assembly and another to indicate the quantity of a given part in an illustration.

Service Assembly Reference Numbers

Parts in service assemblies have reference numbers in the form a:b. The a represents the reference number of the entire service assembly and the b represents a sequential number unique to each part within the service assembly.

For example, a wheel assembly might be identified by reference number 6, the tire by 6:1, the valve by 6:2, and the wheel by 6:3. When you order the assembly identified by reference number 6, you receive all parts identified by reference numbers 6:1, 6:2, and 6:3. However, you may also order any part individually. Reference numbers of this type appear in illustrations and in part lists.

Reference Numbers Indicating Quantity

In an illustration, if a reference number indicates more than one part, the reference number has the form nX y. The n represents the quantity of the part, the X is the multiplication symbol, and the y represents the reference number.

For example, in an illustration, the reference number 2X 37 means that two of the parts identified by reference number 37 are indicated.

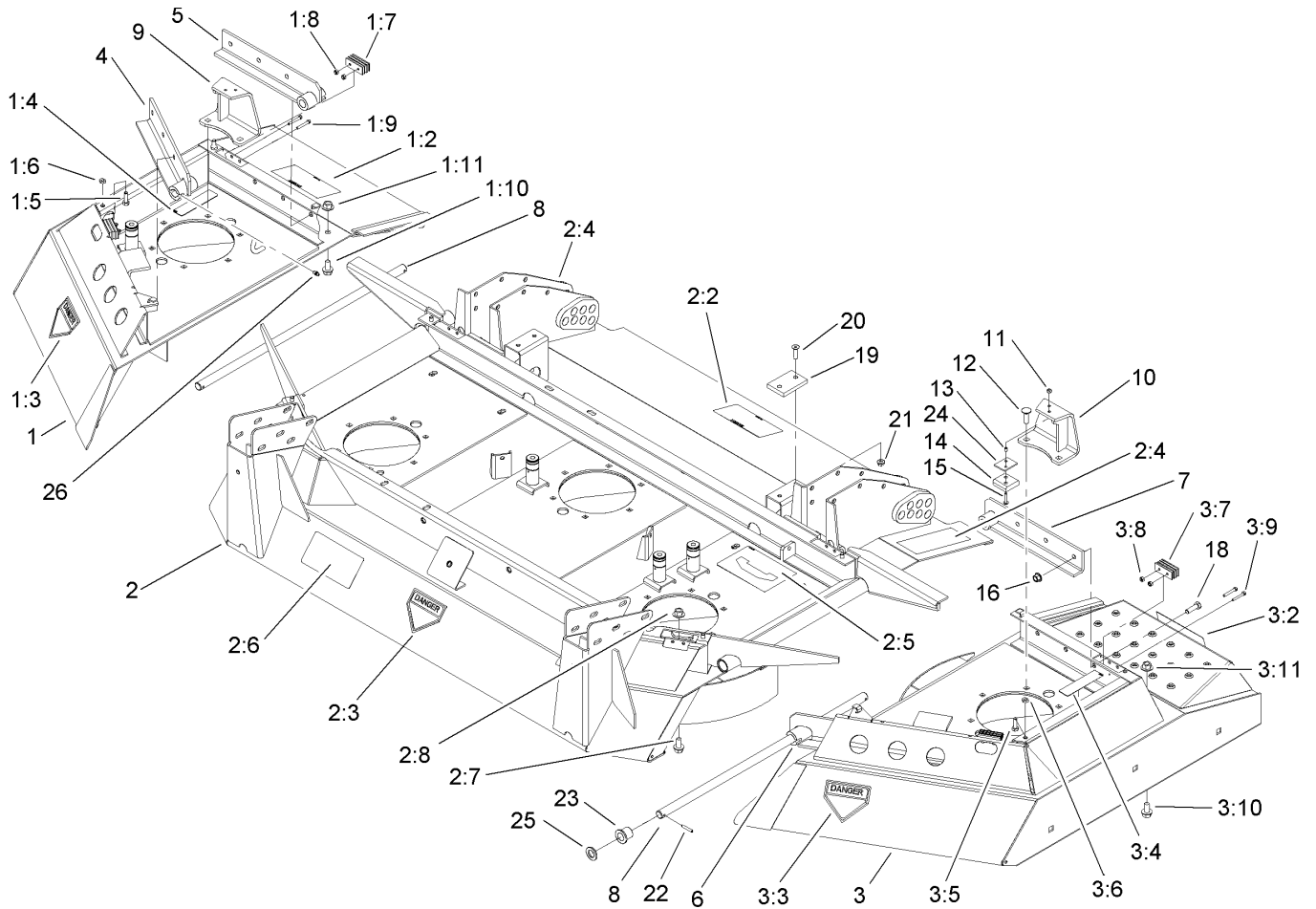
Contents

Description	Page	Description	Page
Deck and Wing Assembly 3	Castor Arm and Wheel Assembly 6
Pulley and Drive Assembly 5	Deck Cover Assembly 7
		Spindle Assembly 8

Part Description Abbreviations

Part descriptions in this catalog may include the following abbreviations.

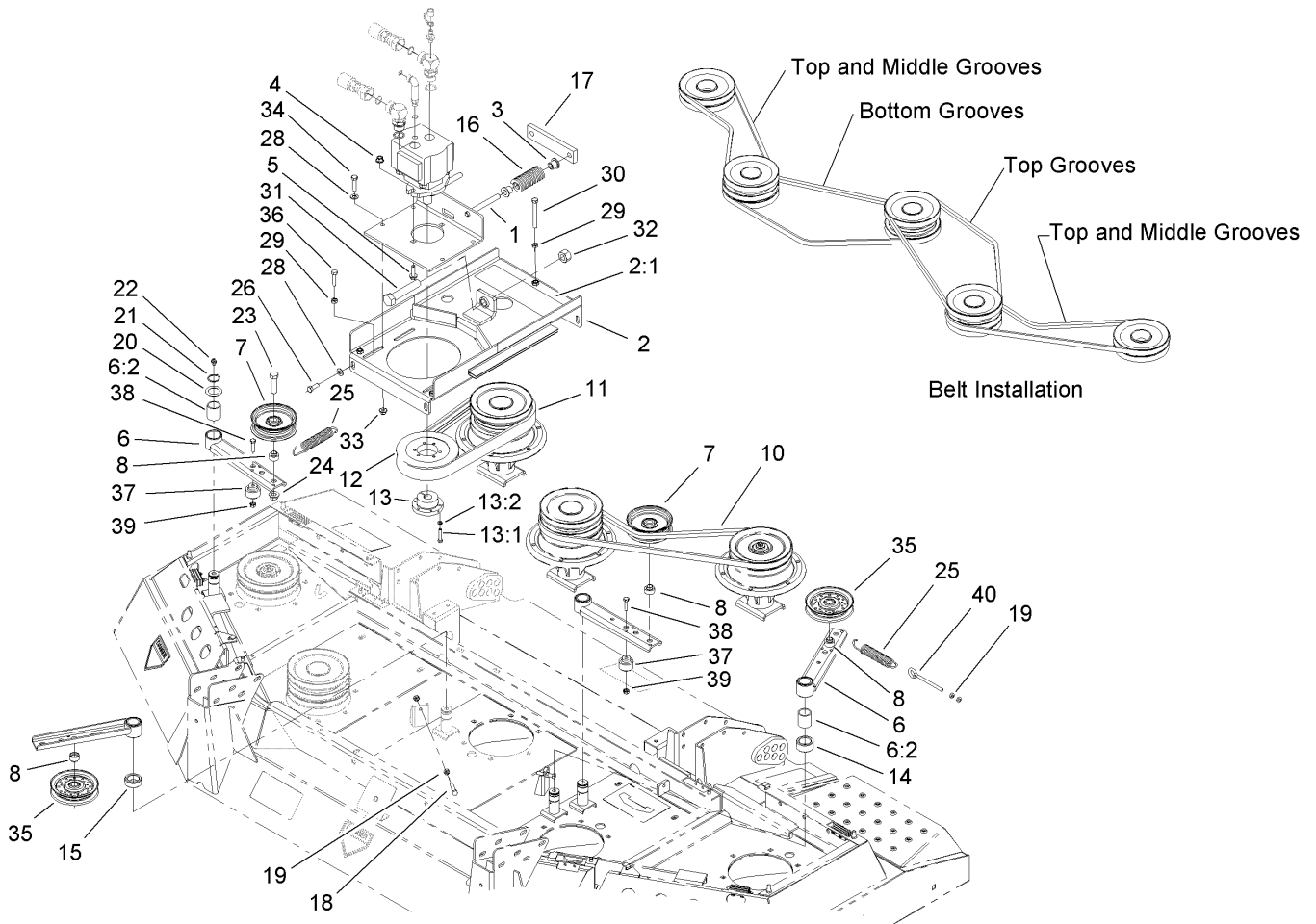
AR. as required	INC. incorporated
ASM. assembly	LH. left hand
BBC. blade brake clutch	NI. nylon insert
CARR. carriage	NPTF. national pipe thread fine
DEG. degrees	PFH. phillips flat head
EXT. external	PPH. phillips pan head
FH. flat head	PPHTF. phillips pan head thread forming
GA. gauge	PRH. phillips round head
HF. hex flange	PTH. phillips truss head
HH. hex head	PTO. power-take-off
HHF. hex head flange	RH. right hand
HHFTF. hex head flange thread forming	ROPS. roll-over-protection-system
HJ. hex jam	SFH. slotted fillister head
HLH. hex lag head	SHH. slotted hex head
HOC. height-of-cut	SHWH. slotted hex washer head
HSBH. hex socket button head	SPH. slotted pan head
HSFH. hex socket flat head	SQH. square head
HSH. hex socket head	SRH. slotted round head
HWH. hex washer head	STD. standard
HWHTF. hex washer head thread forming	TAP. self tapping
HYD. hydraulic	TTH. torx truss head



Deck and Wing Assembly

Ref	Part No.	Qty.	Description
1	106-0037	1	RH Wing Deck ASM
1:2	66-1340	1	Decal-Danger
1:3	43-8480	1	Decal-Danger
1:4	67-5360	1	Decal-Danger
1:5	322-5	2	Screw-HH
1:6	3218-2	2	Nut-Jam
1:7	69-6260	2	Magnet
1:8	3296-2	4	Nut-Lock
1:9	32105-1	4	Screw-SHH
1:10	3234-12	2	Screw-HHF
1:11	32128-43	2	Nut-Flange
2	106-0038	1	Center Deck ASM
2:2	66-1340	1	Decal-Danger
2:3	43-8480	1	Decal-Danger
2:4	95-0817	2	Decal-HOC
2:5	106-0040	1	Decal-Routing, Belt
2:6	95-0845	1	Decal-HOC
2:7	3234-12	8	Screw-HHF
2:8	32128-43	8	Nut-Flange
3	106-0039	1	LH Wing Deck ASM
3:2	66-1340	1	Decal-Danger
3:3	43-8480	1	Decal-Danger
3:4	67-5360	1	Decal-Danger
3:5	322-5	2	Screw-HH

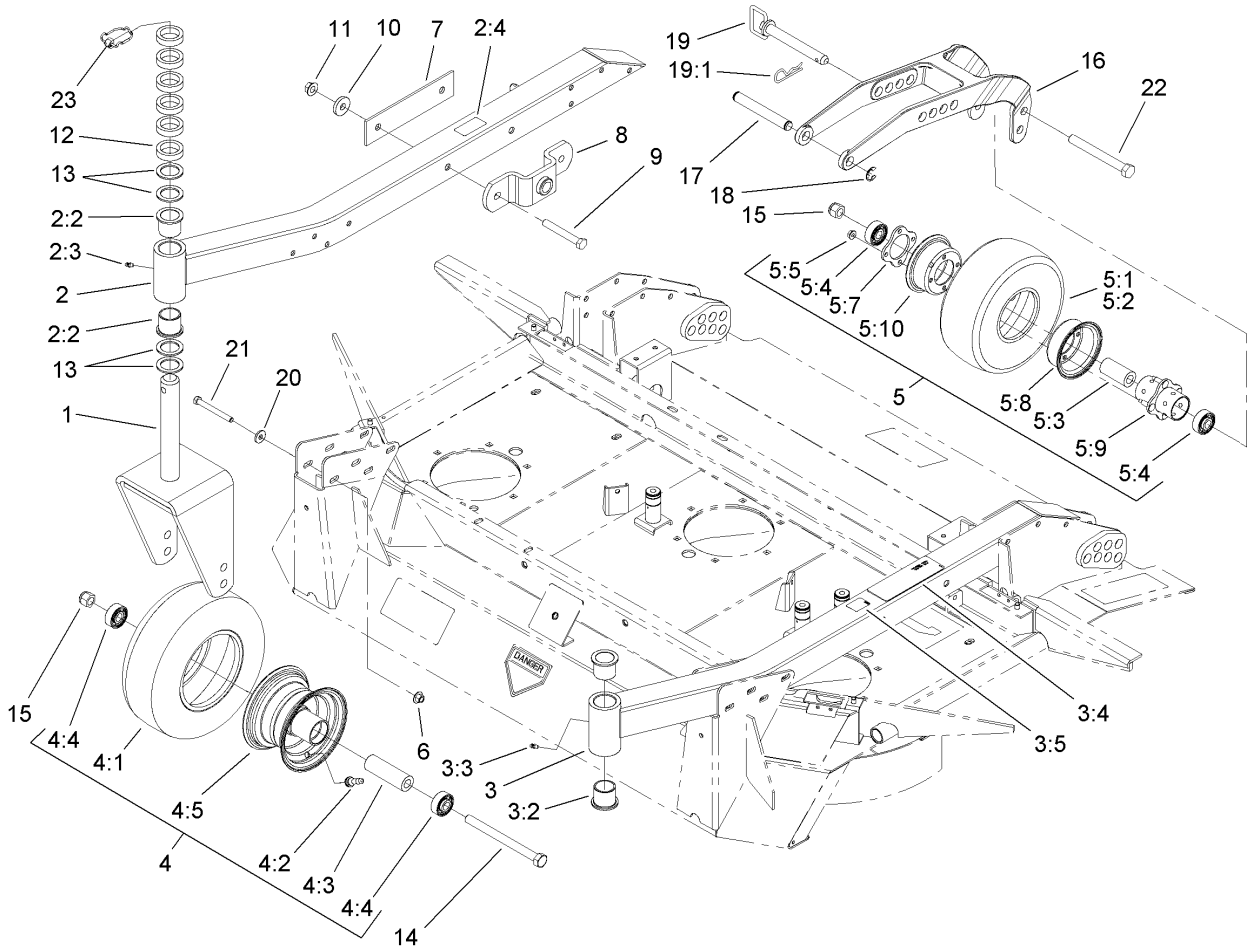
Ref	Part No.	Qty.	Description
3:6	3218-2	2	Nut-Jam
3:7	69-6260	2	Magnet
3:8	3296-2	4	Nut-Lock
3:9	32105-1	4	Screw-SHH
3:10	3234-12	2	Screw-HHF
3:11	32128-43	2	Nut-Flange
4	69-6690-01	1	Hinge-Front, Right
5	69-6710-01	1	Hinge-Rear, Right
6	69-6640-01	1	Hinge-Front, Left
7	69-6670-01	1	Hinge-Rear, Left
8	69-6900	2	Shaft-Hinge
9	94-6762-01	1	Bracket-RH
10	94-6760-01	1	Bracket-LH
11	3296-2	4	Nut-Lock
12	3231-4	4	Screw-CARR
13	40-9520	4	Spacer
14	40-0330	2	Cushion-Rubber
15	32122-28	4	Screw
16	32128-36	6	Nut-HF
18	323-6	6	Screw-HH
19	69-9290	2	Pad-Bumper
20	32108-103	4	Screw-FH
21	32128-20	4	Nut-HF
22	32121-6	4	Pin-Roll, Slotted



Pulley and Drive Assembly

Ref	Part No.	Qty.	Description
1	105-0655-03	1	Slide Plate ASM
2	110-6125	1	Mount ASM-Motor
2:1	110-6126	1	Decal-Adjustment, Belt Tension
3	100-1414	4	Holder-Spring
4	32128-36	2	Nut-HF
5	3234-24	2	Screw-HHF
6	105-0722	4	Idler Arm Bushing ASM
6:2	256-254	1	Bushing
7	69-5430	2	Pulley-Idler, Flat
8	69-6970	4	Spacer-Idler, Flat
10	99-2318	4	V-Belt
11	106-0003	1	V-Belt
12	105-0672	1	Pulley
13	105-0671	1	Hub
13:1	32104-96	3	Screw-HH
13:2	3253-3	3	Washer-Lock
14	105-0720	1	Bushing
15	105-0721	1	Bushing
16	106-0029	2	Spring-Compression
17	105-0636-03	1	Bar-Slide
18	322-41	2	Screw-HH
19	3218-2	8	Nut-Jam
20	106-0075	4	Washer-Shim
21	32120-2	4	Ring-Retaining

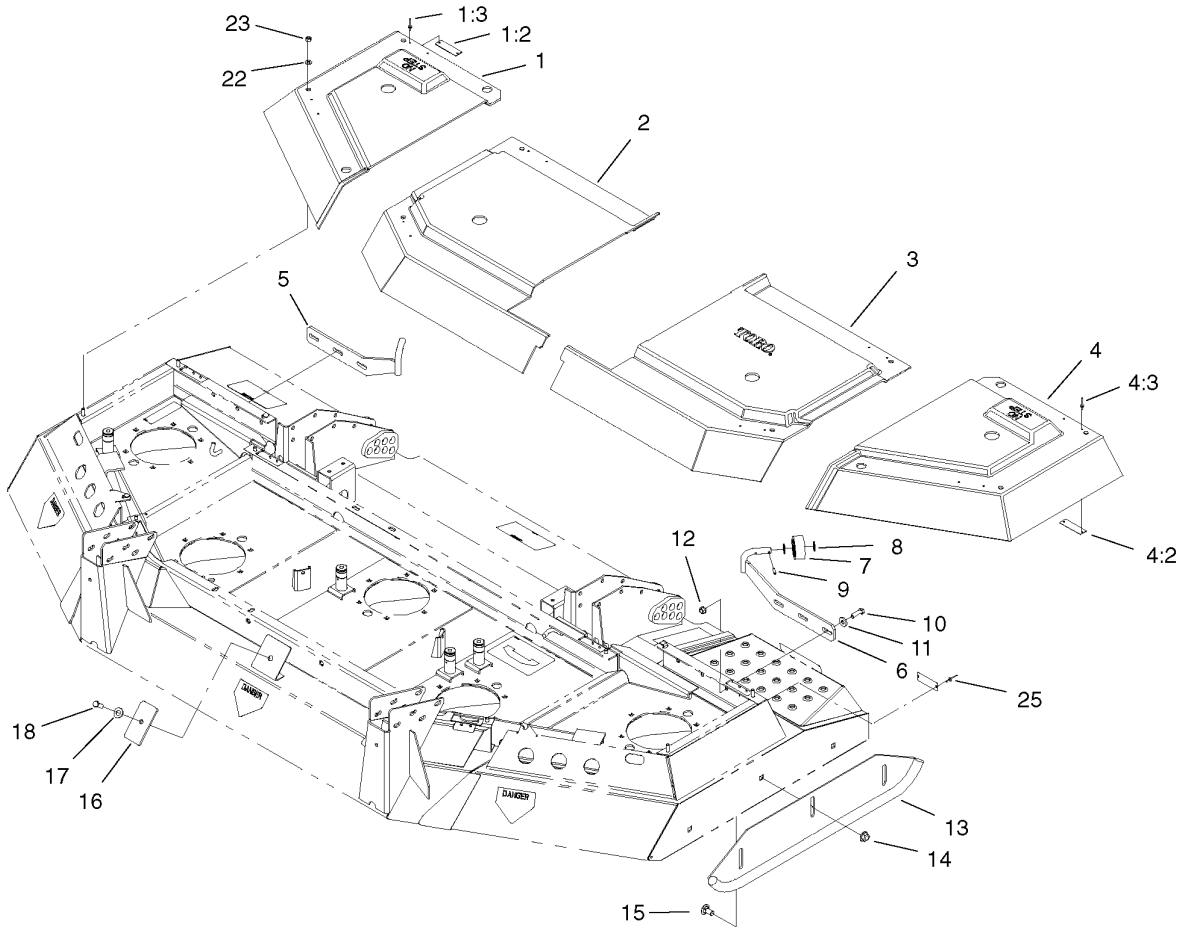
Ref	Part No.	Qty.	Description
22	302-2	4	Fitting-Grease
23	325-8	4	Screw-HH
24	32128-23	4	Nut-HF
25	76-1670-03	4	Spring-Extension
26	3234-42	4	Screw-HHF
28	3256-24	8	Washer-Flat
29	3218-3	3	Nut-Jam
30	323-49	1	Bolt-TAP
31	106-0042	1	TAP Bolt-HH
32	3218-7	1	Nut-Jam
33	104-8301	4	Nut-Flange, NI
34	323-7	4	Screw-HH
35	63-1540-03	2	Pulley-Idler
36	323-50	2	Bolt-TAP
37	98-3038	2	Bushing-Idler
38	322-6	2	Screw-HH
39	32149-1	2	Nut-Keps
40	100-6177	2	Rod-Tension



Castor Arm and Wheel Assembly

Ref	Part No.	Qty.	Description
1	98-7302-01	2	Fork-Castor
2	106-0026	1	RH Castor Arm ASM
2:2	69-6470	2	Bushing-Caster
2:3	302-5	1	Fitting-Grease
2:4	53-4860	1	Decal-Standard, Safety
3	106-0027	1	LH Castor Arm ASM
3:2	69-6470	2	Bushing-Caster
3:3	302-5	1	Fitting-Grease
3:4	95-0818	1	Decal-Torque
3:5	93-7252	1	Decal
4	98-7312	2	12 Inch Wheel ASM
4:1	98-7313	1	Tire-12 Inch
4:2	232-27	1	Stem-Valve
4:3	93-5630	1	Spacer-Bearing, Inner
4:4	93-4237	2	Bearing
4:5	93-5631	1	6 Inch Rim ASM
5	93-4240	2	10 Inch Wheel ASM
5:1	93-4243	1	Tire
5:2	93-4244	1	Tube-Inner (W/Valve)
5:3	93-4241	1	Spacer-Bearing, Inner
5:4	93-4237	2	Bearing
5:5	32128-16	4	Nut-HHF
5:7	93-4242	1	Plate
5:8	93-4239	1	Rim-Wheel, Half

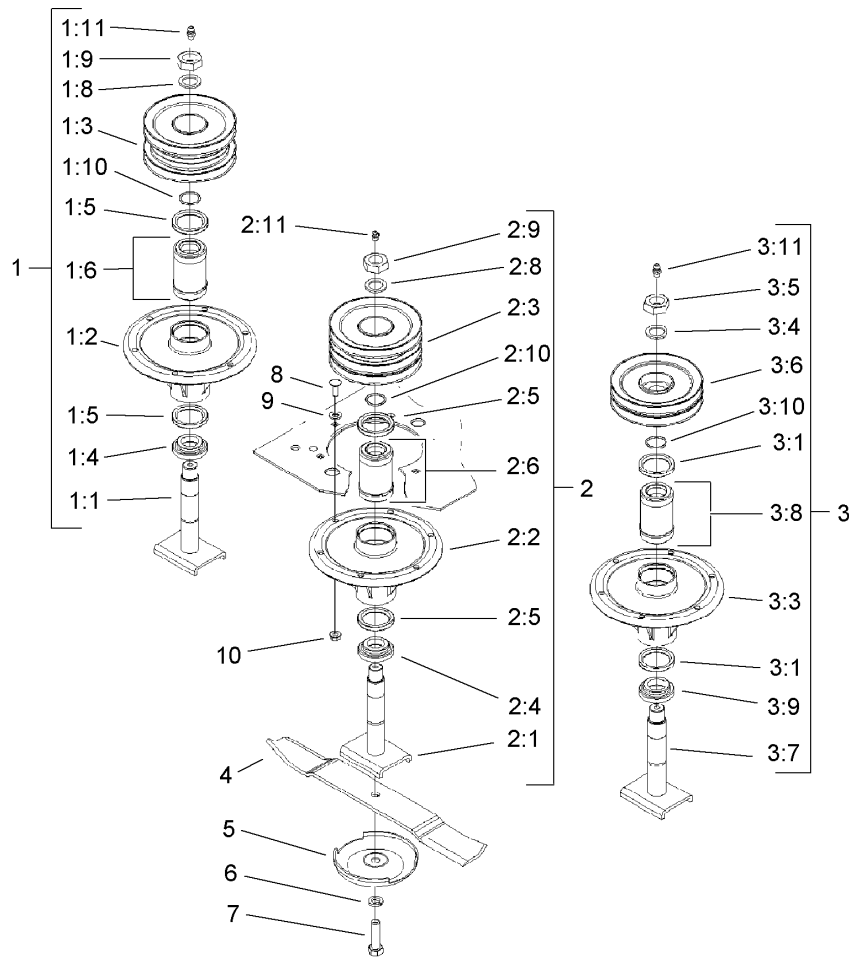
Ref	Part No.	Qty.	Description
5:9	93-5980	1	Hub
5:10	95-2741	1	Rim-Wheel, Half
6	32128-43	16	Nut-Flange
7	69-8790-01	2	Plate-Reinforcing
8	69-7290-01	2	Mount-Joint, Ball
9	325-15	4	Screw-HH
10	30-8770	4	Washer
11	32128-23	4	Nut-HF
12	69-1510	12	Spacer-Caster
13	69-6860	8	Washer-Thrust
14	327-25	2	Screw-HH
15	3296-53	4	Nut-Lock, NI
16	98-3047-01	2	Arm-Pivot
17	69-9260	2	Clevis Pin
18	32151-48	4	E-Ring
19	283-70	2	Pin-Hitch
19:1	3290-343	1	Pin-Hair
20	5-0838	16	Washer
21	323-15	16	Screw-HH
22	327-24	2	Screw-HH
23	3290-384	2	Pin-Lynch



Deck Cover Assembly

Ref	Part No.	Qty.	Description
1	106-0033	1	RH Wing Cover ASM
1:2	69-6870	4	Plate-Magnet
1:3	3269-25	4	Rivet-Pop
2	105-0704	1	Cover-RH, Center
3	105-0705	1	Cover-LH, Center
4	106-0036	1	LH Wing Cover ASM
4:2	69-6870	4	Plate-Magnet
4:3	3269-25	4	Rivet-Pop
5	88-9260-01	1	Bracket-Roller, RH
6	88-9270-01	1	Bracket-Roller, LH
7	82-4910	2	Roller
8	3256-69	4	Washer-Flat
9	32121-4	4	Pin-Roll, Slotted
10	323-7	6	Screw-HH
11	5-0838	6	Washer
12	32128-36	6	Nut-HF
13	69-6730-01	2	Skid ASM
14	32128-23	6	Nut-HF
15	3233-9	6	Screw-CARR
16	105-0743-03	1	Cover-Keeper
17	3256-26	1	Washer-Flat
18	323-6	1	Screw-HH
22	3256-71	4	Washer-Flat
23	3296-29	4	Nut-Lock, NI

Ref	Part No.	Qty.	Description
25	3290-271	2	Rivet-Pop



Spindle Assembly

Ref	Part No.	Qty.	Description
1	106-0005	1	Center Spindle ASM
1:1	110-3285	1	Spindle Shaft ASM
1:2	69-1530	1	Housing-Spindle
1:3	106-0023	1	Pulley-Center
1:4	69-6950	1	Spacer-Shaft, Spindle
1:5	253-154	2	Seal-Oil
1:6	71-2530	1	Bearing/Spacer Kit
1:8	108-1483	1	Washer
1:9	3296-49	1	Nut-Lock, NI
1:10	6590003	1	O-Ring
1:11	302-2	1	Fitting-Grease
2	106-0006	2	Outer Spindle ASM
2:1	69-6760	1	Shaft-Spindle
2:2	69-1530	1	Housing-Spindle
2:3	106-0022	1	Pulley-Outboard
2:4	69-6950	1	Spacer-Shaft, Spindle
2:5	253-154	2	Seal-Oil
2:6	71-2530	1	Bearing/Spacer Kit
2:8	108-1483	1	Washer
2:9	3296-49	1	Nut-Lock, NI
2:10	6590003	1	O-Ring
2:11	302-2	1	Fitting-Grease
3	69-8400	2	Spindle ASM
3:1	253-154	2	Seal-Oil

Ref	Part No.	Qty.	Description
3:3	69-1530	1	Housing-Spindle
3:4	108-1483	1	Washer
3:5	3296-49	1	Nut-Lock, NI
3:6	69-8390-03	1	Spindle Pulley ASM
3:7	69-6760	1	Shaft-Spindle
3:8	71-2530	1	Bearing/Spacer Kit
3:9	69-6950	1	Spacer-Shaft, Spindle
3:10	6590003	1	O-Ring
3:11	302-2	1	Fitting-Grease
4	69-6920	5	Blade-20 Inch
5	67-7561	5	Cup-Scalp, Anti
6	3253-23	5	Washer-Lock/Sp
7	51-4060	5	Screw-Blade
8	3231-28	26	Screw-CARR
9	3256-24	40	Washer-Flat
10	32128-36	30	Nut-HF

NOTES

NOTES

NOTES

