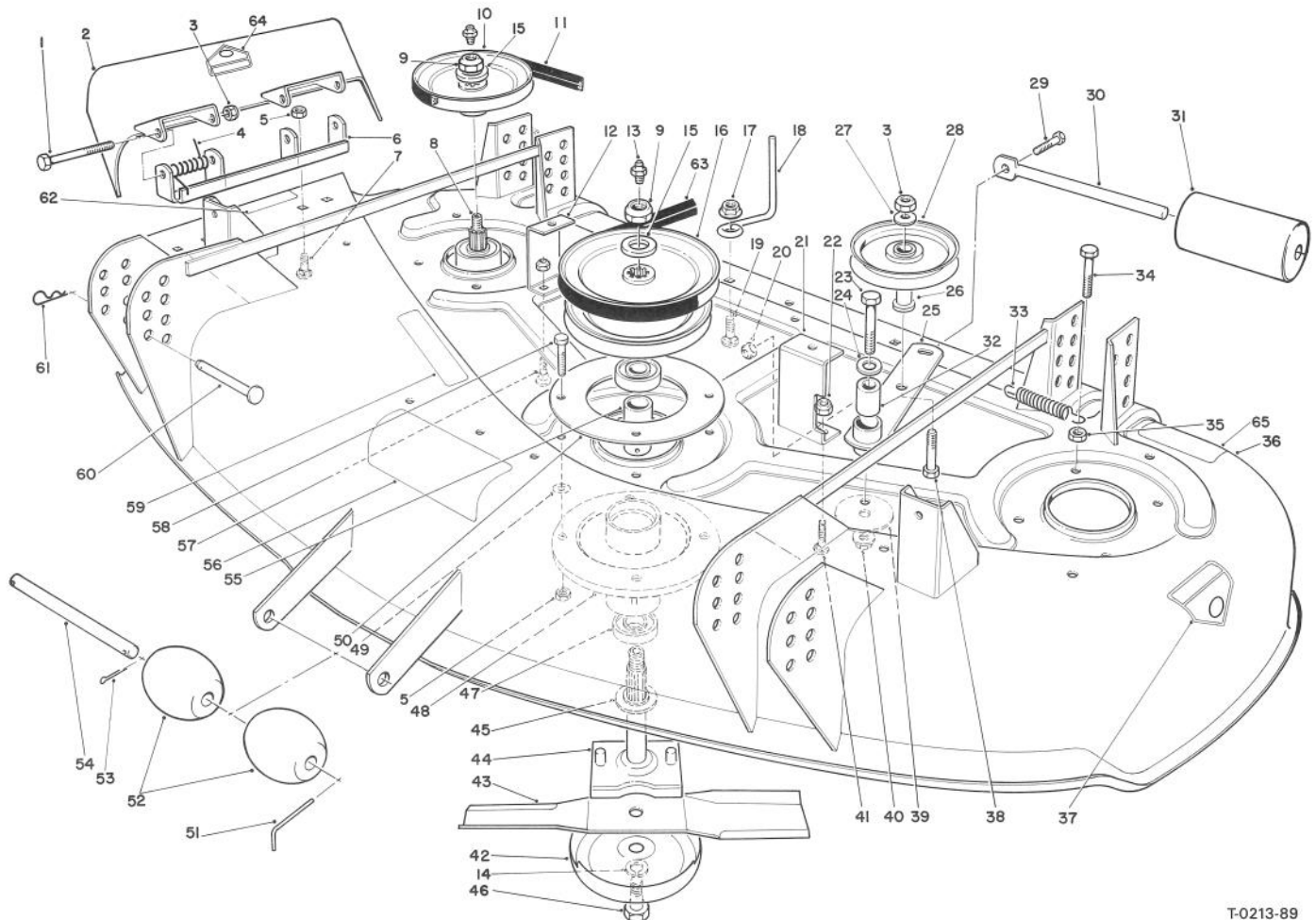




MODEL NO. 30144-9000001 &amp; UP

**PARTS  
CATALOG****44" CUTTING DECK WIDE AREA MOWER**

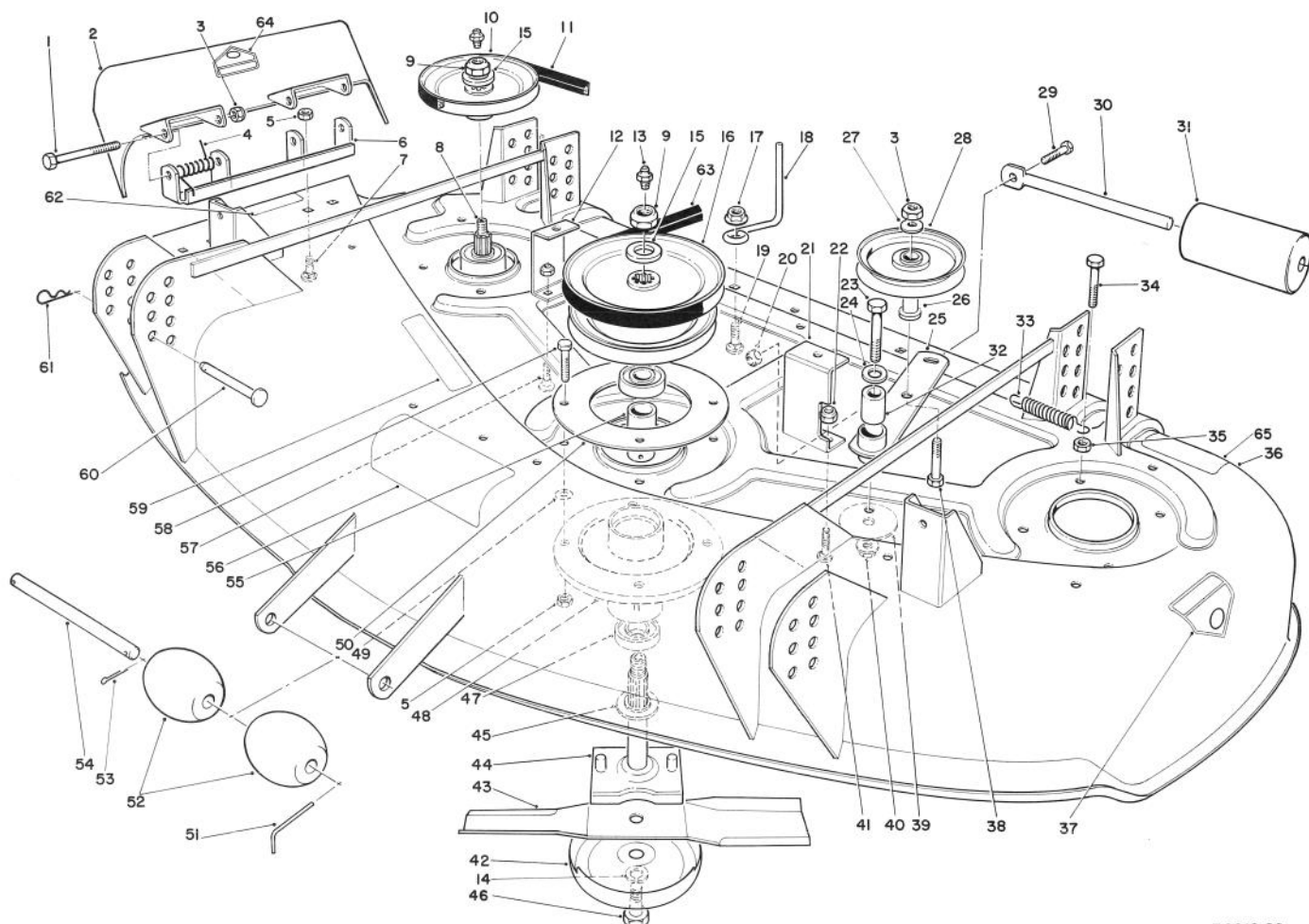
T-0213-89

**CUTTING UNIT ASSEMBLY**

Ref. No.	Part No.	Description	No. Used
1	3211-15	Screw — Cap Hex Head	2
2	13-3899	Grass Deflector (Incl. Ref. #64)	1
3	3296-5	Nut — Lock	3
4	40-6230	Spring — Torsion	2
5	32152-1	Nut — Lock	16
6	55-8320	Bracket — Pivot	1
7	3230-18	Bolt — Carriage	4
8	67-7670	Spindle Shaft	2
9	32146-20	Locknut	3
10	67-7690	Pulley — Spindle	2
11	27-1160	Belt — Spindle to Spindle	1
12	54-3230	Cover — Bracket R.H.	1
13	302-2	Grease — Fitting	3
14	3253-8	Washer — Lock	3

Ref. No.	Part No.	Description	No. Used
15	7-4150	Washer — Spindle	3
16	67-7650	Pulley	1
17	32128-13	Nut — Lock	2
18	52-4780	Rod — Belt	2
19	3230-2	Bolt — Carriage	2
20	3296-29	Nut — Lock	1
21	54-3240	Cover Bracket	1
22	3296-42	Nut — Lock	4
23	323-11	Capscrew — Hex Head	1
24	3256-24	Washer	1
25	54-2710	Idler Arm	1
26	65-5950	Bushing — Pulley	1
27	7-0081	Washer — Special	1
28	65-5940	Pulley	1

\*Not Illustrated



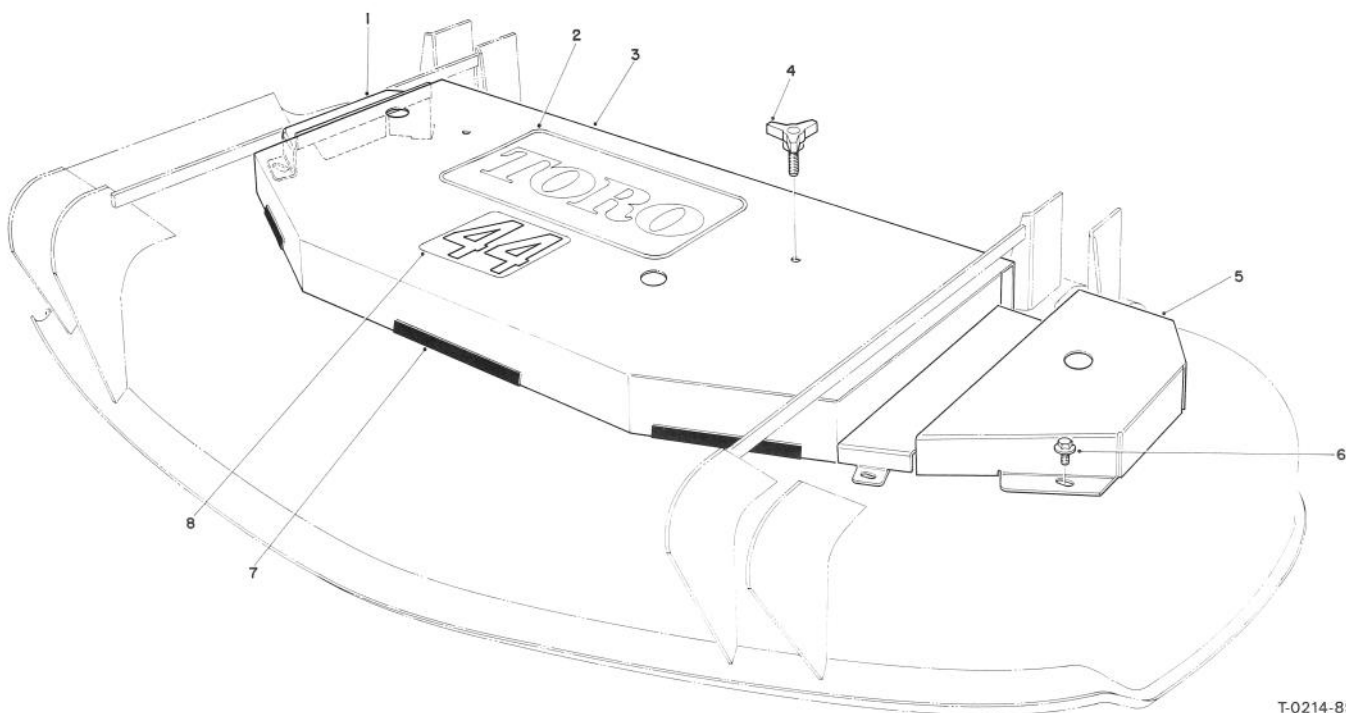
T-0213-89

## CUTTING UNIT ASSEMBLY (Continued)

Ref. No.	Part No.	Description	No. Used
29	322-3	Screw — Cap Hex Head	1
30	62-4480	Shaft — Roller	1
31	36-1740	Roller	1
32	51-3640	Sleeve — Idler Pivot	1
33	54-2730	Spring — Extension	1
34	322-6	Screw — Cap Hex Head	1
35	3218-2	Nut — Hex Jam	1
36	13-3909	Housing	1
		(Incl. Ref. #37, 56 & 65)	
37	43-8480	Decal — Danger	1
38	3211-8	Screw — Cap Hex Head	1
39	20-9530	Washer	1
40	32128-21	Nut — Lock, Flange	1
41	3229-3	Bolt — Carriage	2
42	67-7561	Anti-Scalp Cup	3
43	54-0010	Blade	3
44	67-7610	Spindle — Shaft	1
45	67-7570	Spacer — Spindle	3
46	51-4060	Bolt — Blade	3
47	251-257	Bearing	6
48	67-7590	Spindle Tube	3
49	3256-2	Washer	A/R
50	55-8280	Support Ring	2

Ref. No.	Part No.	Description	No. Used
51	57-0690	Cotter Pin — Special	1
52	29-4820	Roller	2
53	3272-11	Pin — Cotter	1
54	40-6400	Shaft — Roller	1
55	67-7580	Spacer — Bearing	3
56	66-1340	Decal — Danger	1
57	3229-1	Bolt — Carriage	2
58	322-4	Screw — Cap Hex Head	11
59	67-5360	Decal — Shields	1
60	283-55	Pin — Clevis	4
61	3290-355	Pin — Hair	4
62	66-6380	Decal — Deflector Missing	1
63	54-2750	V-Belt — Engine, to Deck	1
64	54-9220	Decal — Danger	1
65	68-8340	Decal — Blade Bolt Torque	1
*	55-4940	Blade — High Sail (Optional)	3
*	67-7660	Spindle Housing Assembly	2
		(Incl. Ref. #8-10, 13, 15, 45, 47, 48 & 55)	
*	67-7600	Spindle Housing Assembly	1
		(Incl. Ref. #9, 13, 15, 16, 44, 45, 47, 48 & 55)	

\*Not Illustrated

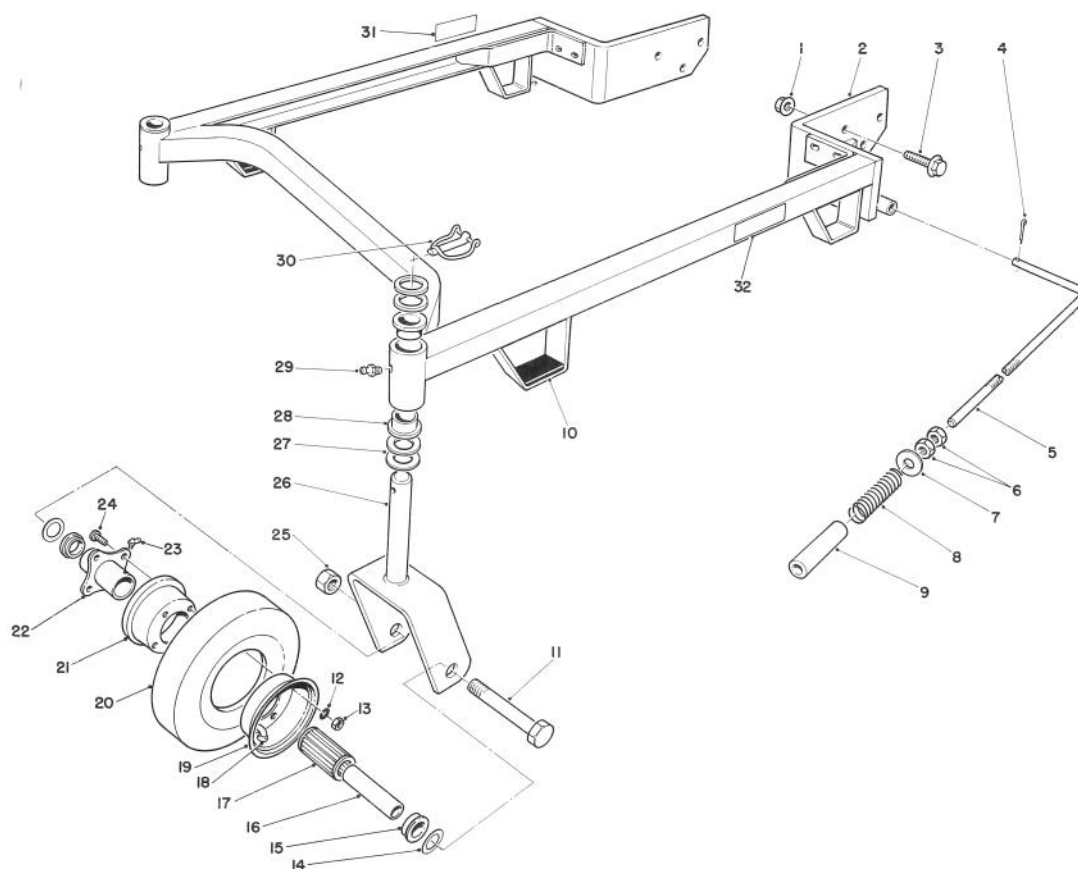


T-0214-89

## CUTTING UNIT DECK COVERS

Ref. No.	Part No.	Description	No. Used
1	54-2250	Cover — Deck R.H.	1
2	62-7400	Decal — Toro	1
3	54-3190	Cover — Deck, Center	1
4	62-6520	Adjustment Handle	2

Ref. No.	Part No.	Description	No. Used
5	54-2220	Cover — Deck L.H.	1
6	46-8560	Screw — Self Tapping	5
7	29-0641	Jiffy Trim	5
8	54-2760	Decal — 44"	1



T-0215-89

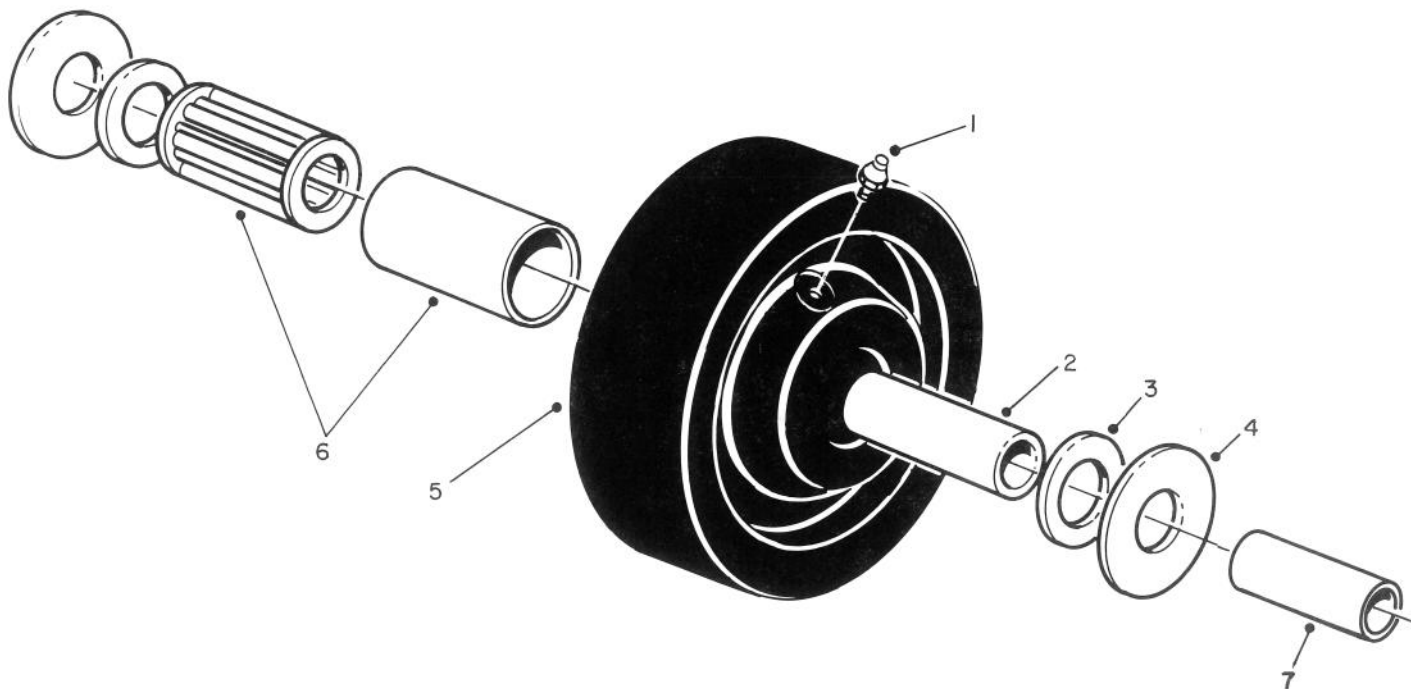
## CARRIER FRAME ASSEMBLY

T-0215-89

Ref. No.	Part No.	Description	No. Used
1	32128-23	Nut — Lock	6
2	54-2800	Suspension Frame (Incl. Ref. #28)	1
3	3234-6	Screw — Flange Hex Head	6
4	3272-7	Pin — Cotter	2
5	51-3490	Shaft — Adjusting	2
6	3218-5	Nut — Hex Jam	4
7	51-3500	Washer	2
8	66-7140	Spring — Compression	2
9	51-3480	Sleeve - Tube	2
10	54-2700	Cushion — Rubber	2
11	325-19	Screw — Cap Hex Head	2
12	3253-4	Washer — Lock	8
13	3217-6	Nut — Hex	8
14	3256-6	Spacer — Wheel	4
15	62-5580	Bushing	4
16	68-8980	Spanner Bushing	2
17	62-5570	Roller Bearing	2

Ref. No.	Part No.	Description	No. Used
18	68-8950	Tube w/Valve	2
19	68-8920	Wheel Half — Female	2
20	68-8960	Tire	2
21	68-8930	Wheel Half — Male	2
22	68-8940	Hub — Centered	2
23	302-61	Grease Fitting	2
25	32153-5	Locknut	2
26	68-8900	Castor Fork	2
27	3-6781	Washer — Thrust	8
28	28-9290	Bushing — Special	4
29	302-5	Grease Fitting	2
30	3290-384	Pin — Lynch	2
31	26-7980	Decal — Caution	1
32	68-8360	Decal — Height of Cut	1
*	13-3869	Castor Wheel Assembly (2 per carton)	1

\*Not Illustrated



## CASTOR WHEEL ASSEMBLY NO. 27-1050 (Optional)

T-0220-89

Ref. No.	Part No.	Description	No. Used
1	302-55	Grease Fitting	1
2	27-1200	Spanner Bushing	1
3	27-1180	Bearing Retainer	2

Ref. No.	Part No.	Description	No. Used
4	27-1170	Thrust Washer	2
5	27-1190	Wheel	1
6	27-1210	Roller Bearing	1
7*	68-8980	Spanner	1

\*Note: Spanner to be used when assembled with Castor Fork #68-8900.

# The Toro Promise

## A ONE YEAR LIMITED WARRANTY

*The Toro Company promises to repair your TORO Product if defective in materials or workmanship. The following time periods from the date of purchase apply:*

### **Commercial Products ..... 1 Year**

*The costs of parts and labor are included, but the customer pays the transportation costs on walk rotary mowers with cutting unit width of less than 25".*

If you feel your TORO product is defective and wish to rely on The Toro Promise, the following procedure is recommended:

1. Contact your Authorized TORO Distributor or Commercial Dealer (the Yellow Pages of your telephone directory is a good reference source).
2. The Toro Distributor or Commercial Dealer will advise on the arrangements that can be made to inspect and repair your product.
3. The TORO Distributor or Commercial Dealer will inspect the product and advise you whether the product is defective and, if so, make all repairs necessary to correct the defect without an extra charge to you.

If for any reason you are dissatisfied with the distributor's analysis of the defect or the service performed, you may contact us.

Write:

TORO Commercial Products Service Department  
8111 Lyndale Avenue South  
Minneapolis, Minnesota 55420

The above remedy of product defects through repair by an Authorized TORO Distributor or Commercial Dealer is the purchaser's sole remedy for any defect.

THERE IS NO OTHER EXPRESS WARRANTY. ALL IMPLIED WARRANTIES OF MERCHANTABILITY AND FITNESS FOR USE ARE LIMITED TO THE DURATION OF THE EXPRESS WARRANTY.

Some states do not allow limitations on how long an implied warranty lasts, so the above limitation may not apply to you.

This Warranty applies only to parts or components which are defective and does not cover repairs necessary due to normal wear, misuse, accidents, or lack of proper maintenance. Regular, routine maintenance of the unit to keep it in proper condition is the responsibility of the owner.

All warranty repairs reimbursable under the Toro Promise must be performed by an Authorized TORO Commercial Dealer or Distributor using Toro approved replacement parts.

Repairs or attempted repairs by anyone other than an Authorized TORO Distributor or Commercial Dealer are not reimbursable under the Toro Promise. In addition, these unauthorized repair attempts may result in additional malfunctions, the correction of which is not covered by warranty.

THE TORO COMPANY IS NOT LIABLE FOR INDIRECT, INCIDENTAL OR CONSEQUENTIAL DAMAGES IN CONNECTION WITH THE USE OF THE PRODUCT INCLUDING ANY COST OR EXPENSE OF PROVIDING SUBSTITUTE EQUIPMENT OR SERVICE DURING PERIODS OF MALFUNCTION OR NON-USE.

Some states do not allow the exclusion or limitation of incidental or consequential damages, so the above limitation or exclusion may not apply to you.

This warranty gives you specific legal rights, and you may also have other rights which vary from state to state.

### **COUNTRIES OTHER THAN THE UNITED STATES OR CANADA**

Customers who have purchased TORO products exported from the United States or Canada should contact their TORO Distributor (Dealer) to obtain guarantee policies for your country, province or state. If for any

reason you are dissatisfied with your Distributor's service or have difficulty obtaining guarantee information, contact the TORO importer. If all other remedies fail, you may contact us at The Toro Company.

# MAINTENANCE RECORD

[illegible]



## MAINTENANCE RECORD

[illegible]