



Count on it.

Operator's Manual

Enclosed Walking Boom Trailer

For Enclosed Walking Boom

Model No. 41359—Serial No. 260000001 and Up

Introduction

Read this manual carefully to learn how to operate and maintain your product properly. The information in this manual can help you and others avoid injury and product damage. Although Toro designs and produces safe products, you are responsible for operating the product properly and safely.

This manual identifies potential hazards and has safety messages identified by the safety alert symbol (Figure 1), which signals a hazard that may cause serious injury or death if you do not follow the recommended precautions.



Figure 1

1. Safety alert symbol

This manual uses 2 other words to highlight information. **Important** calls attention to special mechanical information and **Note** emphasizes general information worthy of special attention.

Contents

Introduction	2
Safety	3
Before Operating	3
While Operating.....	3
Safety and Instructional Decals	3
Setup	4
1 Mounting the Universal Tow Hitch	5
2 Assembling the Trailer	5
3 Connecting the Trailer to the Tow Hitch	6
Operation	8
Loading the Enclosed Walking Boom onto the Trailer	8
General Maintenance	8

Safety

Before Operating

1. Operate this machine only after reading and understanding the contents of this manual.
2. Drive the vehicle slowly.
3. Ensure the hair pin is used with the hitch pin.

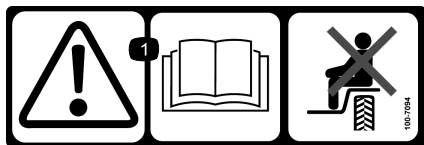
While Operating

1. Make certain everyone is clear of the machine before starting the engine to move the vehicle or to engage the sprayer pump drive.
2. Drive the vehicle safely:
 - A. Always SLOW the vehicle when approaching and while making a turn.
 - B. Always SLOW the vehicle when driving in unfamiliar areas or over rough terrain.
 - C. Always SLOW the vehicle when changing direction of travel or preparing to stop.
 - D. When turning or driving on slopes, always SLOW the vehicle, then turn the vehicle to prevent loss of control and possible upset.
 - E. DO NOT make sudden or sharp turns. DO NOT suddenly change direction of travel on an incline, ramp, grade, slope or similar surface.
3. Before backing up, look to the rear and assure no one is behind. Back up slowly.
4. Watch out for traffic when near or crossing roads. Always yield the right of way to pedestrians and other vehicles.
5. Keep all nuts, bolts and other fasteners tightened securely. Replace any shields removed during servicing or adjustments.
6. To assure optimum performance and continued safety of this product, always use genuine Toro replacement parts and accessories. Replacement parts and accessories made by other manufacturers may affect the product's operation, performance or durability. Such use could also void the warranty of The Toro® Company.
7. This trailer is to be used exclusively for transporting the Enclosed Walking Boom.

Safety and Instructional Decals



Safety decals and instructions are easily visible to the operator and are located near any area of potential danger. Replace any decal that is damaged or lost.



100-7094

1. Warning—read the *Operator's Manual*; no riders.

Setup

Loose Parts

Use the chart below to verify that all parts have been shipped.

Step	Description	Qty.	Use
1	Universal tow hitch	1	Mount the universal tow hitch.
	Mounting plate	1	
	U-bolt	2	
	Bolt (3/8 x 1 inch)	4	
	Locknut (3/8 inch)	4	
2	Main frame assembly	1	Assemble the trailer.
	Wheel mount	2	
	Bolt (1/2 x 2 inches)	2	
	Lock nut (1/2 inch)	4	
	Spring latch	1	
	Bolt (1/4 x 2 inches)	2	
	Lock nut (1/4 inch)	2	
	Wheel assembly	2	
	Bolt (1/2 x 9 inches)	2	
	Washer	4	
3	Tow hitch bar	1	Connect the trailer to the tow hitch.
	Bolt (3/8 x 2 inches)	2	
	Lock nut (3/8 inch)	2	
	Hitch pin	1	
	Hair pin	1	

Note: Determine the left and right sides of the machine from the normal operating position.

Step 1

Mounting the Universal Tow Hitch

Parts needed for this step:

1	Universal tow hitch
1	Mounting plate
2	U-bolt
4	Bolt (3/8 x 1 inch)
4	Locknut (3/8 inch)

Procedure

For all machines with serial numbers 260000001 and up:

1. Install the universal tow hitch to the center boom using a mounting plate, 4 bolts (3/8 x 1 inch) and 4 lock nuts (3/8 inch) as shown in (Figure 2). The mounting plate should be installed with the notched edge pointing down.

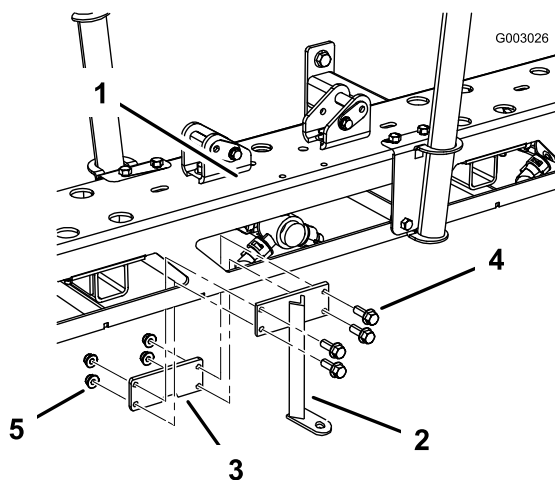


Figure 2

- | | |
|--|------------------------|
| 1. Center boom | 4. Bolt (3/8 x 1 inch) |
| 2. Universal tow hitch | 5. Lock nut (3/8 inch) |
| 3. Mounting plate (notched edge pointing down) | |

2. Position the hitch at the desired location and tighten all fasteners.

For all other machines:

1. Install the universal tow hitch to the center boom using 2 U-bolts and 4 lock nuts (3/8 inch) as shown in (Figure 3).

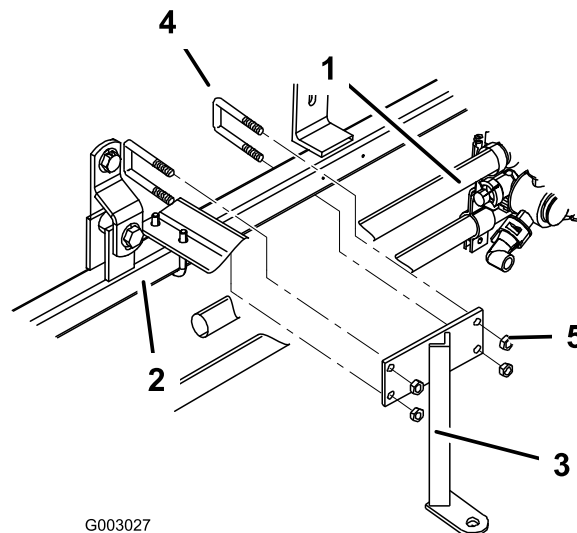


Figure 3

- | | |
|--------------------------|------------------------|
| 1. Center boom | 4. U-bolt |
| 2. Welded frame assembly | 5. Lock nut (3/8 inch) |
| 3. Universal tow hitch | |

2. Position the hitch at the desired location and tighten all fasteners.

Step 2

Assembling the Trailer

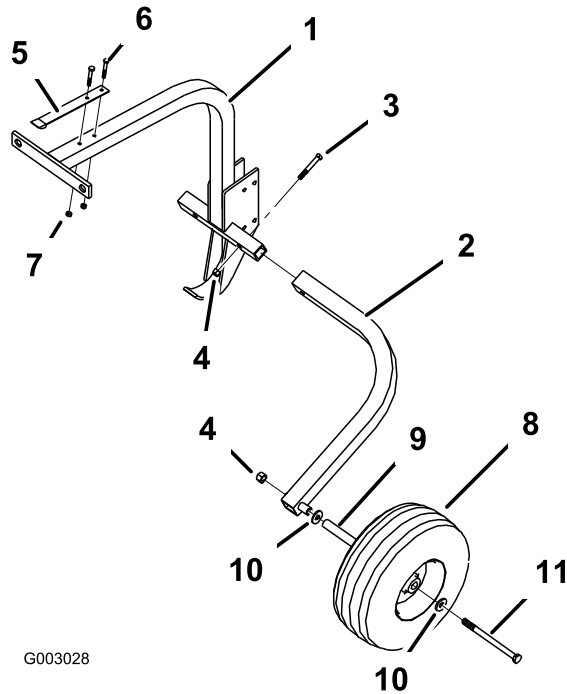
Parts needed for this step:

1	Main frame assembly
2	Wheel mount
2	Bolt (1/2 x 2 inches)
4	Lock nut (1/2 inch)
1	Spring latch
2	Bolt (1/4 x 2 inches)
2	Lock nut (1/4 inch)
2	Wheel assembly
2	Bolt (1/2 x 9 inches)
4	Washer

Procedure

1. Install the wheel mounts to the main frame assembly as shown in Figure 4 using a bolt (1/2 x 2 inches) and lock nut (1/2 inch). Verify the

bolt is installed into the wheel mount side with the larger hole so the fastener head recesses when tightened and contacts the main frame assembly.



G003028

Figure 4

- | | |
|--------------------------|---------------------------|
| 1. Main frame assembly | 7. Lock nut (1/4 inch) |
| 2. Wheel mount | 8. Wheel |
| 3. Bolt (1/2 x 2 inches) | 9. Wheel bearing tube |
| 4. Lock nut (1/2 inch) | 10. Washer |
| 5. Spring latch | 11. Bolt (1/2 x 9 inches) |
| 6. Bolt (1/4 x 2 inches) | |

2. Repeat Step 1 for the opposing wheel mount.
3. Install the spring latch to the top of the main frame assembly as shown Figure 4 in using 2 bolts (1/4 x 2 inches) and 2 lock nuts (1/4 inch).
4. Assemble the wheel and install it to the wheel mount as shown in Figure 4 using a wheel bearing tube, 2 washers, a bolt (1/2 x 9 inches) and lock nut (1/2 inch).
5. Repeat Step 4 for the opposing wheel mount.

Step 3

Connecting the Trailer to the Tow Hitch

Parts needed for this step:

1	Tow hitch bar
2	Bolt (3/8 x 2 inches)
2	Lock nut (3/8 inch)
1	Hitch pin
1	Hair pin

Procedure

If the tow hitch is less than 14 inches off the ground the lower holes in the main frame assembly should be used. If the tow hitch is higher than 14 inches the upper holes in the assembly should be used.

Note: If the trailer is towed behind an enclosed boom, the higher hole position are to be used.

1. Measure the distance of the tow hitch tongue from the ground to determine the desired hole position.
2. Position the tow hitch bar with the square end connecting to the walking boom main frame assembly (Figure 5) using two bolts (3/8 x 2 inches) and two lock nuts (3/8 inch).

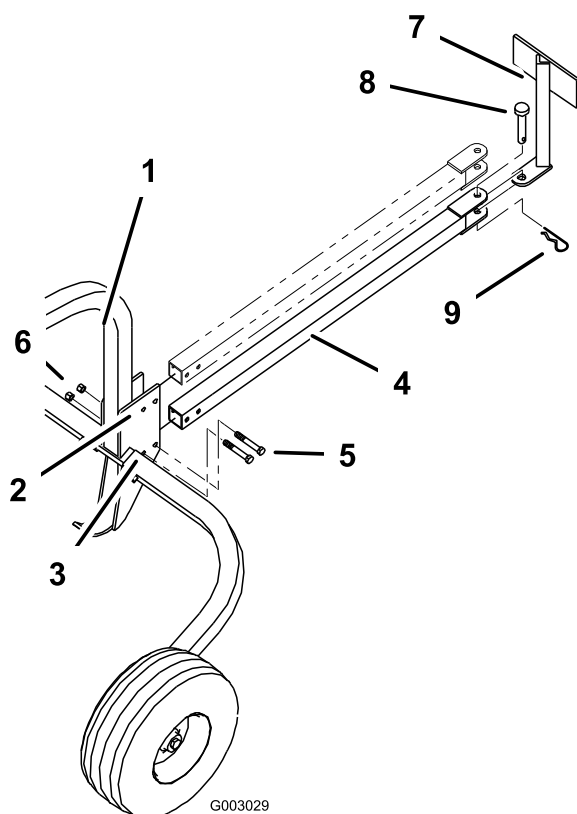


Figure 5

- | | |
|--------------------------|------------------------|
| 1. Main frame assembly | 6. Lock nut (3/8 inch) |
| 2. Upper holes | 7. Universal tow hitch |
| 3. Lower holes | 8. Hitch pin |
| 4. Tow hitch bar | 9. Hair pin |
| 5. Bolt (3/8 x 2 inches) | |

3. Align the trailer tow hitch bar tabs with the universal tow hitch tongue between them (Figure 5).
4. Insert the hitch pin through the tabs and tow hitch tongue and secure it with a hair pin (Figure 5).



Failure to secure the hitch pin with the hair pin could allow the trailer to become detached from the tow vehicle resulting in personal injury or death.

Operation

Loading the Enclosed Walking Boom onto the Trailer

1. Ensure that the walking boom extensions are locked in the transport position.
2. Move the walking boom into position directly behind the trailer and insert the front wheel into the holder on the trailer main frame.
3. With the wheel in the holder pivot the walking boom forward so that the detent pins in the handle find the holes in the cross bar and the trailer latch snaps into place around the bar of the handle (Figure 6).

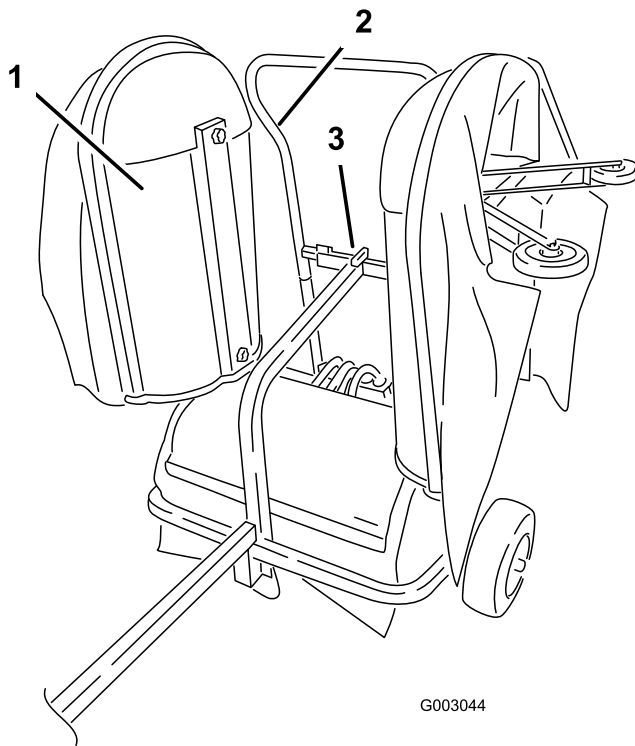


Figure 6

- | | |
|--------------------------|------------------|
| 1. Enclosed walking boom | 3. Trailer latch |
| 2. Handle | |



If the latch does not fully engage the walking boom could release from the trailer and cause person injury or death.

General Maintenance

Grease the wheel bearings of the trailer with No. 2 general purpose lithium base grease.