



53cm Super Recycler[®] Lawnmower

Model No. 20794 - 260000001 and up.

Parts Catalog

Ordering Replacement Parts

To order replacement parts, please supply the part number, the quantity, and the description of each part desired.

Understanding Reference Numbers

Each Identified part in an illustration has a reference number. The reference number for a part also appears in the parts list, along with other information about the part.

This catalog uses two special reference number formats, one to indicate parts in a service assembly and another to indicate the quantity of a given part in an illustration.

Service Assembly Reference Numbers

Parts in service assemblies have reference numbers in the form a:b. The a represents the reference number of the entire service assembly and the b represents a sequential number unique to each part within the service assembly.

For example, a wheel assembly might be identified by reference number 6, the tire by 6:1, the valve by 6:2, and the wheel by 6:3. When you order the assembly identified by reference number 6, you receive all parts identified by reference numbers 6:1, 6:2, and 6:3. However, you may also order any part individually. Reference numbers of this type appear in illustrations and in part lists.

Reference Numbers Indicating Quantity

In an illustration, if a reference number indicates more than one part, the reference number has the form nX y. The n represents the quantity of the part, the X is the multiplication symbol, and the y represents the reference number.

For example, in an illustration, the reference number 2X 37 means that two of the parts identified by reference number 37 are indicated.

Contents

Description	Page	Description	Page
Housing Assembly 3	Cylinder Head Assembly Briggs and Stratton 122602-0120-E1 15
Housing Assembly No. 108-8115 4	Crankshaft Assembly Briggs and Stratton 122602-0120-E1 16
Height-of-Cut and Front Wheel Assembly 5	Crankcase Assembly Briggs and Stratton 122602-0120-E1 17
Transmission Assembly 6	Carburetor Assembly Briggs and Stratton 122602-0120-E1 18
Gear Case Assembly No. 108-8140 7	Air Cleaner Assembly Briggs and Stratton 122602-0120-E1 19
Engine Assembly 8	Governor Assembly Briggs and Stratton 122602-0120-E1 20
Handle Assembly 9	Muffler and Fuel Tank Assembly Briggs and Stratton 122602-0120-E1 21
Rear Bag Assembly 10	Blower Housing Assembly Briggs and Stratton 122602-0120-E1 22
Cylinder Assembly Briggs and Stratton 122602-0120-E1 11		
Starter Assembly Briggs and Stratton 122602- 0120-E1 12		
Gasket Assembly Briggs and Stratton 122602- 0120-E1 13		
Carburetor Overhaul Kit Assembly Briggs and Stratton 122602-0120-E1 14		

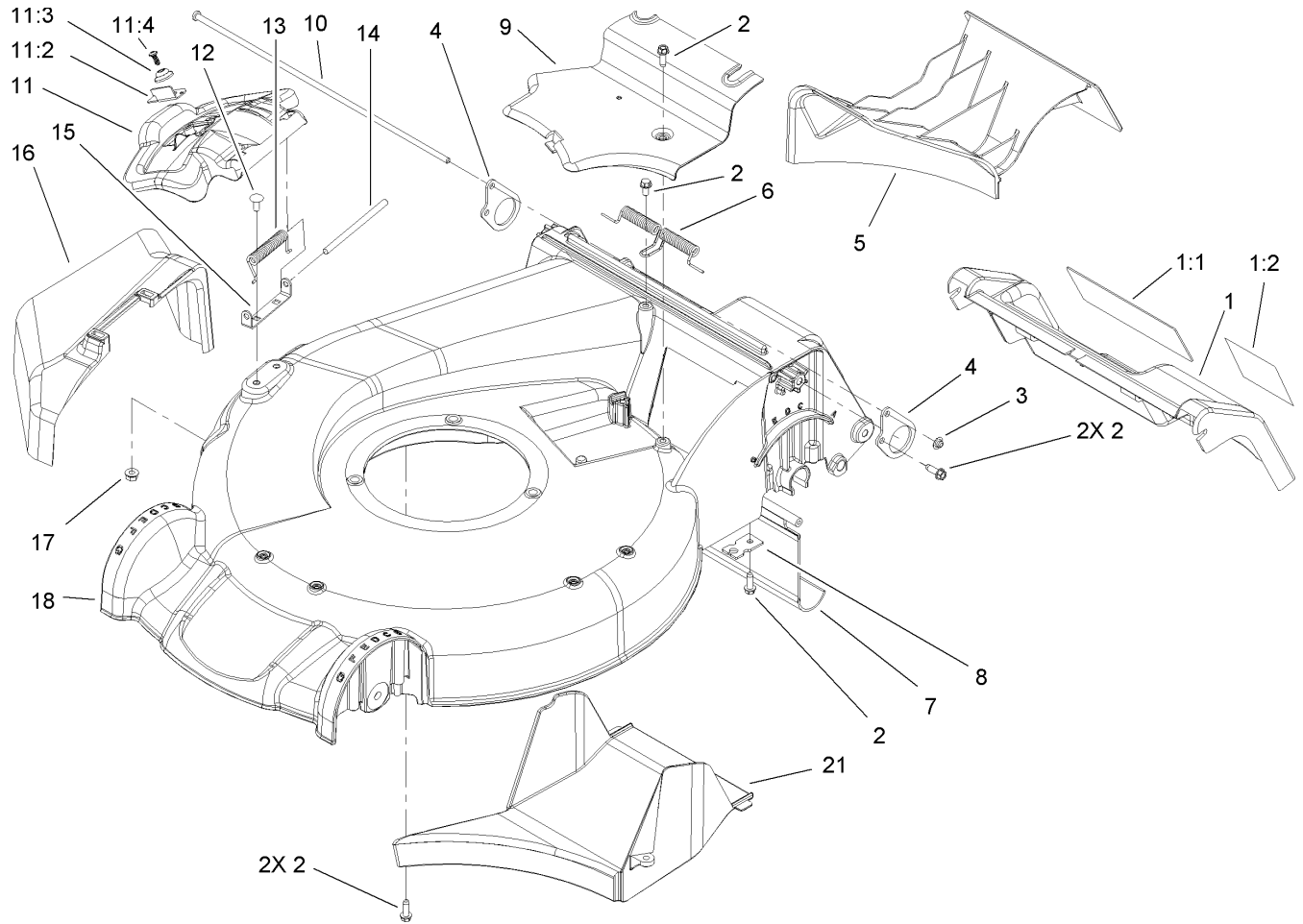
Part Description Abbreviations

Part descriptions in this catalog may include the following abbreviations.

AR. as required	INC. incorporated
ASM. assembly	LH. left hand
BBC. blade brake clutch	NI. nylon insert
CARR. carriage	NPTF. national pipe thread fine
DEG. degrees	PFH. phillips flat head
EXT. external	PPH. phillips pan head
FH. flat head	PPHTF. phillips pan head thread forming
GA. gauge	PRH. phillips round head
HF. hex flange	PTH. phillips truss head
HH. hex head	PTO. power-take-off
HHF. hex head flange	RH. right hand
HHFTF. hex head flange thread forming	ROPS. roll-over-protection-system
HJ. hex jam	SFH. slotted fillister head
HLH. hex lag head	SHH. slotted hex head
HOC. height-of-cut	SHWH. slotted hex washer head
HSBH. hex socket button head	SPH. slotted pan head
HSFH. hex socket flat head	SQH. square head
HSH. hex socket head	SRH. slotted round head
HWH. hex washer head	STD. standard
HWHTF. hex washer head thread forming	TAP. self tapping
HYD. hydraulic	TTH. torx truss head

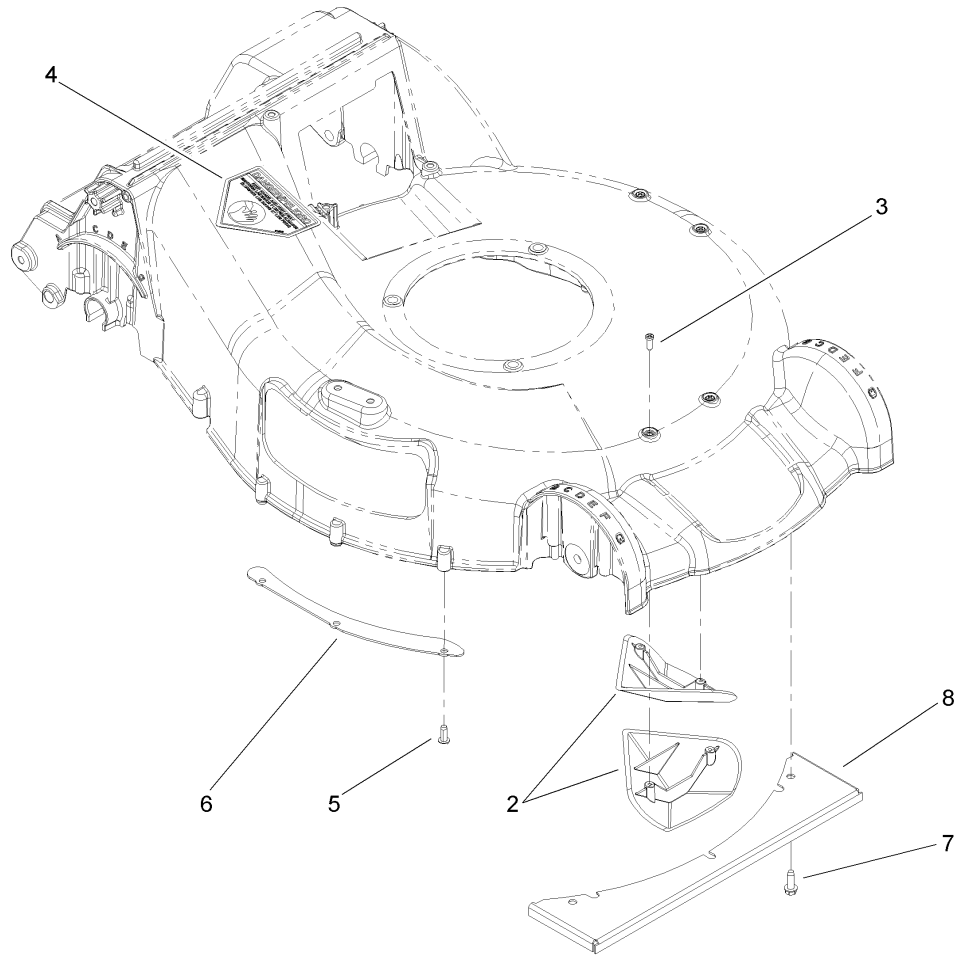
Footnotes

- | | |
|---|---|
| ❶ Not illustrated | ❷ Not serviced separately |
| ❸ Included in Engine Gasket Set-Ref. 358. | ❹ Included in Valve Gasket Set-Ref. 1095. |
| ❺ Included in Carburetor Overhaul Kit-Ref. 121. | ❻ Included in Carburetor Gasket Set-Ref. 977. |
| ❼ Obtain from your local Briggs & Stratton dealer | |



Housing Assembly

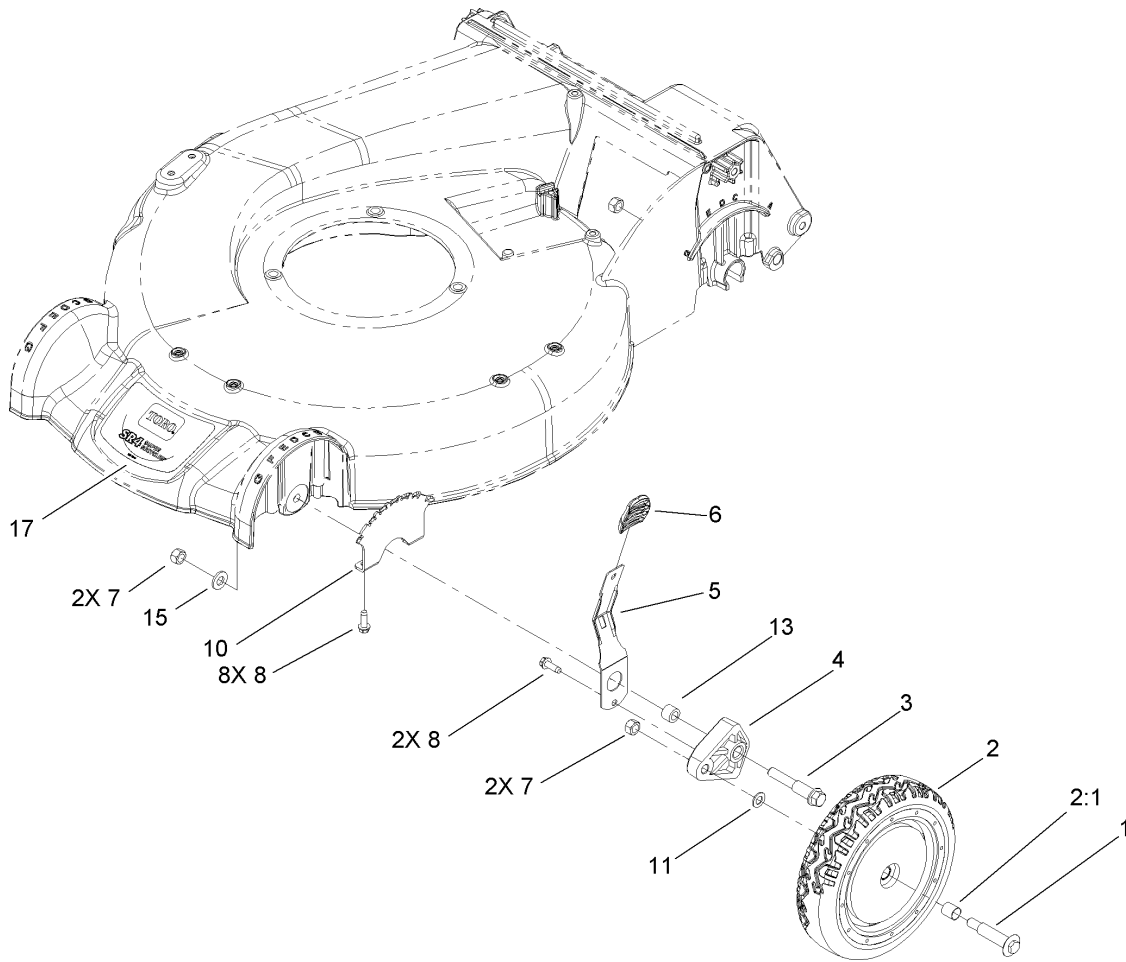
Ref	Part No.	Qty.	Description
1	108-8170	1	Door-Service
1:1	104-7909	1	Decal-Warning
1:2	104-7908	1	Decal-Warning
2	49-2040	7	Screw-HWHTF
3	3290-337	1	Nut-Speed
4	107-7493	2	Plate-Support, Door
5	107-7490	1	Plug-Mulch
6	105-3032	1	Spring-Door, Rear
7	107-7496	1	Shield-Trailing
8	107-7497	1	Bracket-Cable, Traction
9	107-7494	1	Cover-Belt
10	107-7499	1	Rod-Support, Door
11	107-3717	1	Discharge Door ASM
11:2	107-0795	1	Latch-Door
11:3	107-7456	1	Cap-Door
11:4	107-7461	1	Screw-Plastite
12	3229-11	2	Screw-CARR
13	99-5293	1	Spring-Torsion
14	99-5291	1	Rod-Cover
15	99-5292	1	Bracket-Cover
16	108-3753	1	Chute-Discharge, Side
17	32128-32	2	Nut-HHF
18	108-8115	1	Housing ASM
21	107-7495	1	Tunnel-Discharge



Housing Assembly No. 108-8115

Ref	Part No.	Qty.	Description
2	108-3798	2	Kicker-Housing
3	32144-111	4	Screw-PPH
4	94-8072	1	Decal-Danger
5	63-8590	3	Screw
6	105-1316-03	1	Sheet-Lip
7	49-2040	3	Screw-HWHTF
8	108-3797-03	1	Plate-Cover, Front

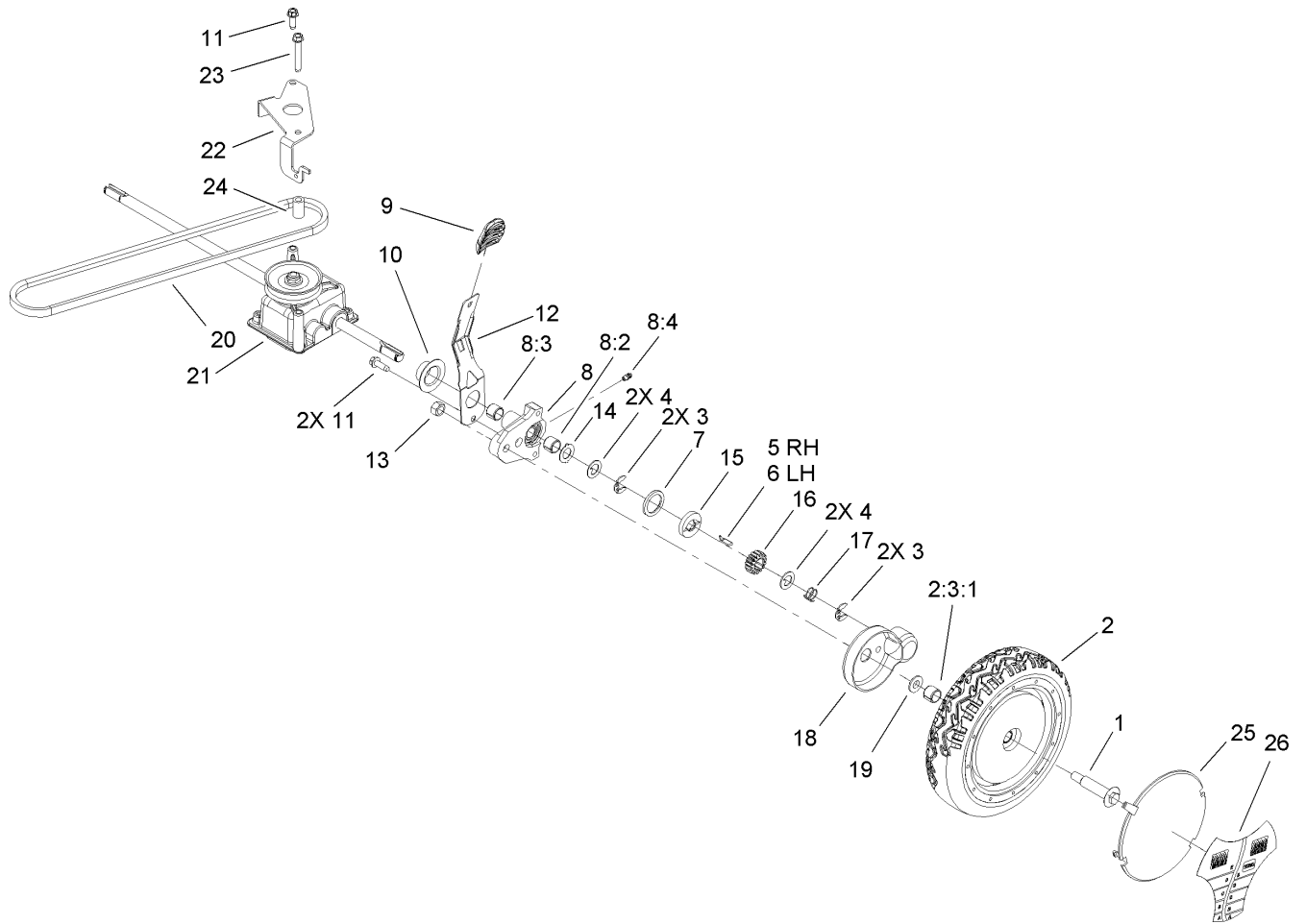
--	--	--	--



Height-of-Cut and Front Wheel Assembly

Ref	Part No.	Qty.	Description
1	92-1057	2	Bolt-Shoulder
2	107-3706	2	8 Inch Wheel ASM
2:1	27-6250	2	Bushing
3	107-7498	2	Screw-Shoulder, HOC
4	107-7492	2	Arm-Pivot
5	107-7491	2	Spring Arm
6	105-3042	2	Knob-Lever, HOC
7	603773	4	Nut
8	49-2040	13	Screw-HWHTF
10	107-7478	4	Plate-HOC
11	40-1940	2	Washer
13	52-2480	2	Spacer-Wheel
15	3256-24	2	Washer-Flat
17	108-4840	1	Decal

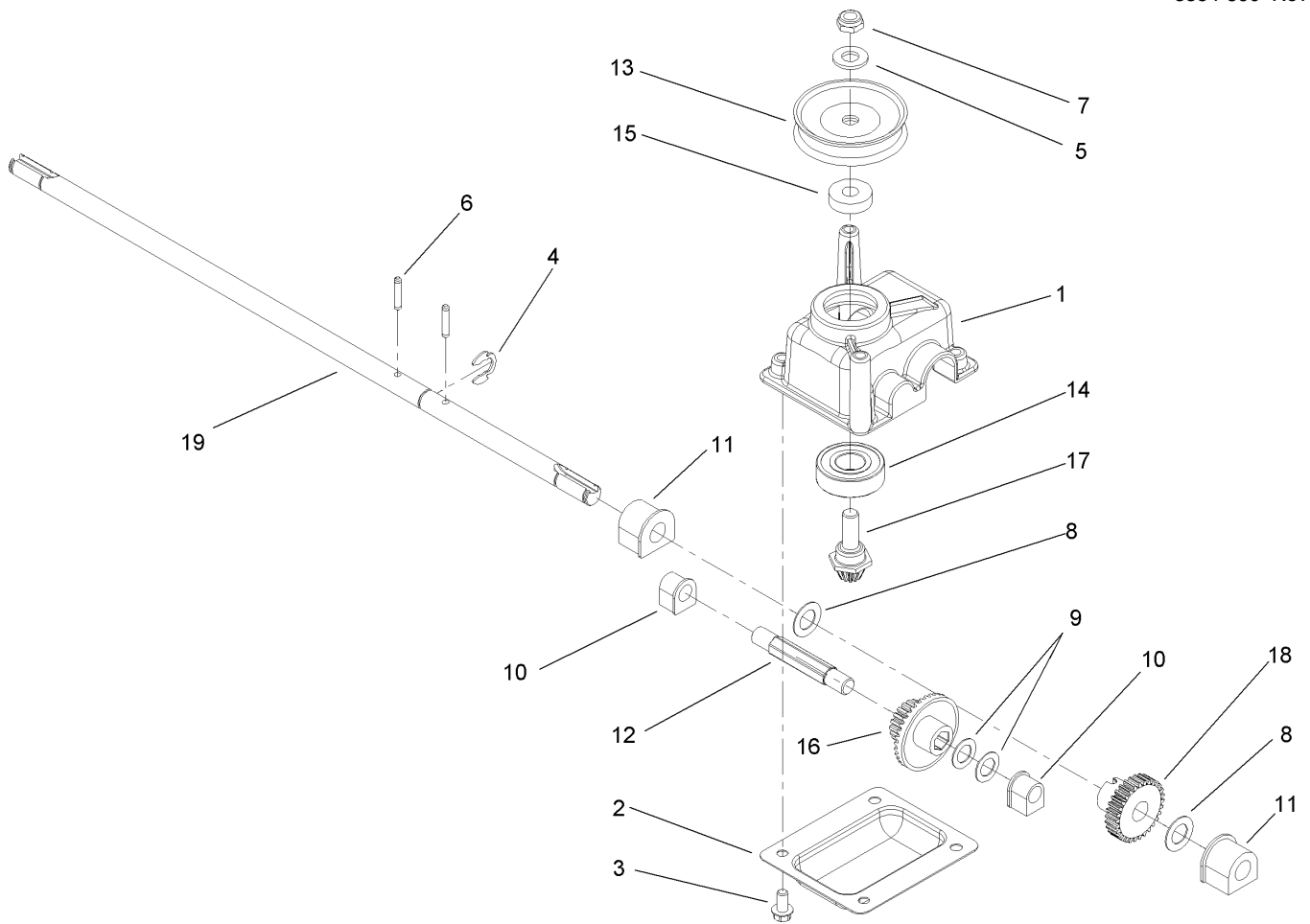
--	--	--	--



Transmission Assembly

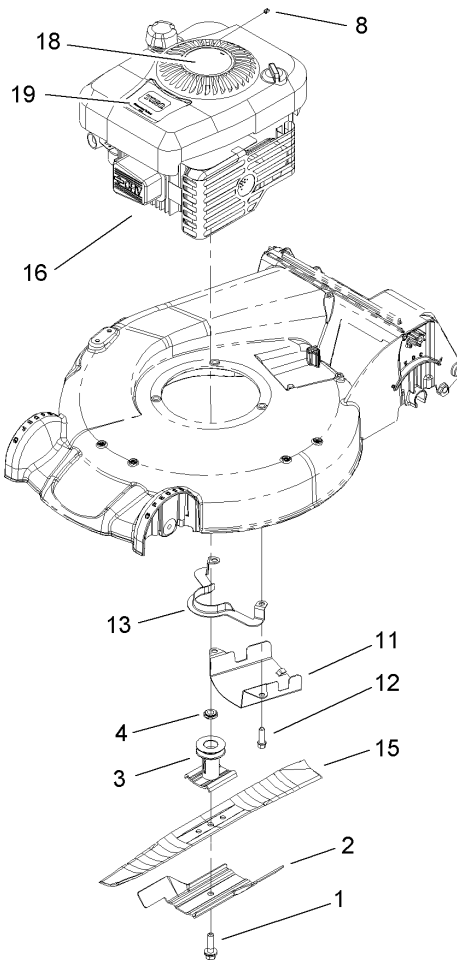
Ref	Part No.	Qty.	Description
1	92-1057	2	Bolt-Shoulder
2	107-3707	2	Wheel Gear ASM
1 2 2:3		1	8 Inch Wheel ASM
2:3:1	27-6250	2	Bushing
3	65-2720	4	Klipring-Locking
4	65-4740	4	Washer-Thrust, Keyed
1 5	66-6040	1	Key-Rocking, RH
6	66-6050	1	Key-Rocking, LH
7	65-4710	2	Ring-Friction
8	100-8774	2	Pivot Arm ASM
8:2	47-2900	1	Bushing
8:3	70-9760	1	Bushing
8:4	302-56	1	Fitting-Grease
9	105-3042	2	Knob-Lever, HOC
10	42-3520	2	Cap-End
11	49-2040	3	Screw-HWHTF
12	107-7491	2	Spring Arm
13	603773	2	Nut
14	65-4730	2	Washer-Arm, Pivot
15	65-4760	2	Washer-Clutch
16	65-4750	2	Gear-Pinion
17	65-4720	2	Spring-Compression
18	74-1660	2	Cover-Wheel
19	74-1671	2	Spacer-Cover, Wheel

Ref	Part No.	Qty.	Description
20	99-1597	1	V-Belt
21	108-8140	1	Gear Case ASM
22	107-7483-03	1	Bracket-Gearbox
23	92-1616	1	Screw-HWHTF
24	614673	1	Bushing-Plate, Actuator
25	100-6351	1	Cover-Wheel
26	100-1519	1	Label-Wheel, Smart



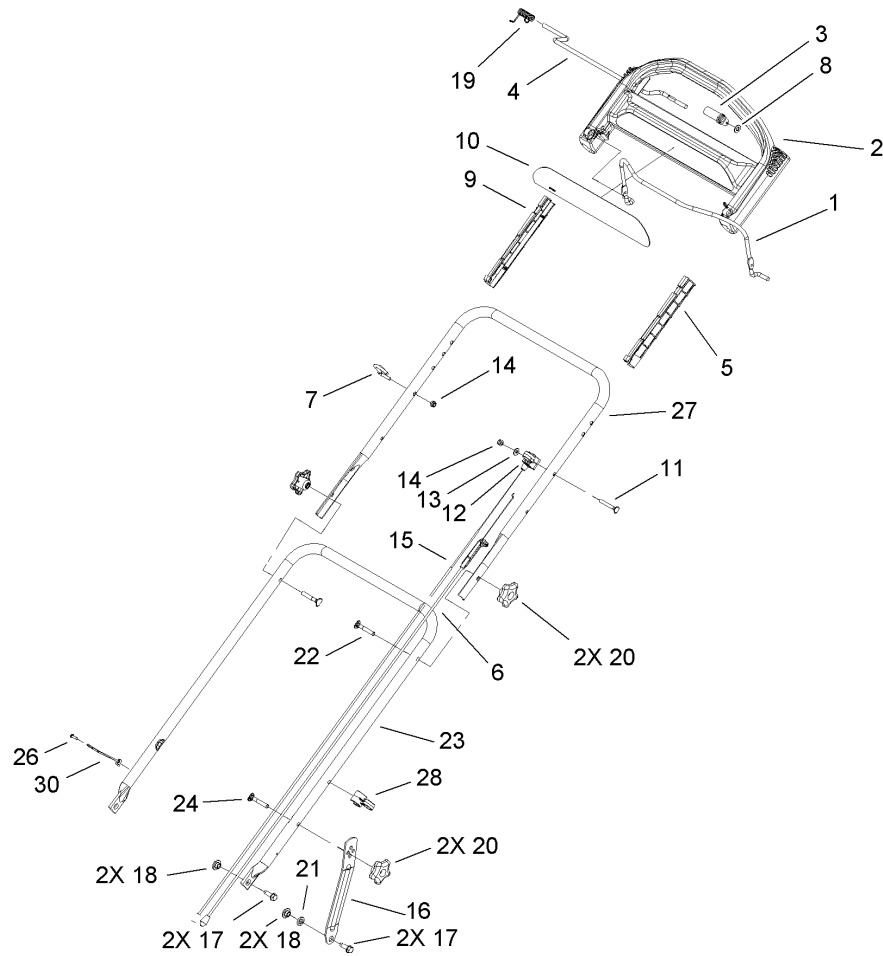
Gear Case Assembly No. 108-8140

Ref	Part No.	Qty.	Description
1	104-7619	1	Case-Gear
2	614668-03	1	Cover-Case, Gear
3	32144-4	4	Screw-HWH
4	32151-68	1	Ring-Retaining
5	3256-24	1	Washer-Flat
6	3285-19	2	Pin-Groove
7	3296-5	1	Nut-Lock
8	36-4780	2	Washer
9	36-4791	2	Washer-Thrust
10	60-8750	2	Bushing
11	60-8850	2	Bushing
12	614696	1	Shaft-Intermediate
13	100-1176	2	Pulley-Half
14	100-1048	1	Bearing-Ball
15	62-6660	1	Spacer
16	104-1005	1	Gear-19T Spur, 37T Bevel
17	104-7667	1	Gear-Pinion, Bevel
18	104-1004	1	Gear-30T
19	108-8141	1	Shaft-Output



Engine Assembly

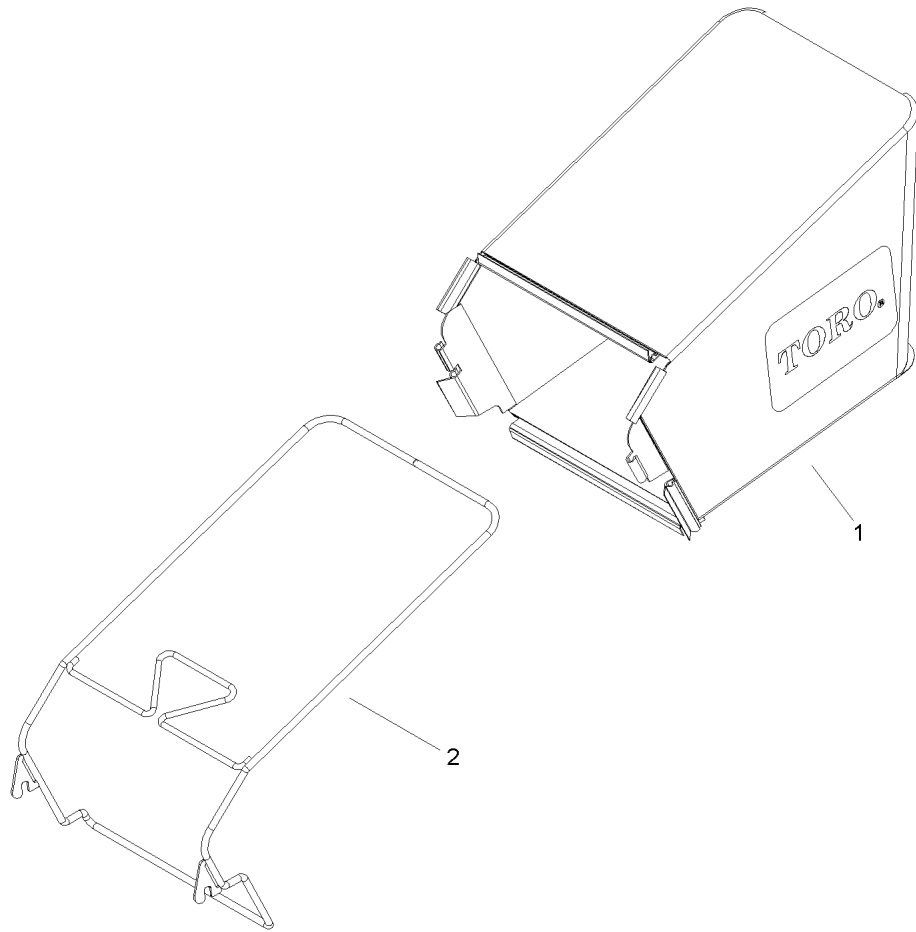
Ref	Part No.	Qty.	Description				
1	105-8579	1	Bolt-Blade				
2	105-6848-03	1	Accelerator-Blade				
3	106-3987	1	Blade Driver ASM				
4	106-3999	1	Spacer-Driver				
8	2210-316	1	Stop-Rope Need Order				
11	107-7489-03	1	Shield-Grass				
12	95-1727	3	Screw-Taptite				
13	108-8110-03	1	Guide-Belt				
15	108-3762-03	1	Blade-Recycling				
16		1	Engine-Briggs And Stratton, 122602-0120-E1				
18	110-7492	1	Decal-Recoil				
19	110-7493	1	Decal-Recoil				



Handle Assembly

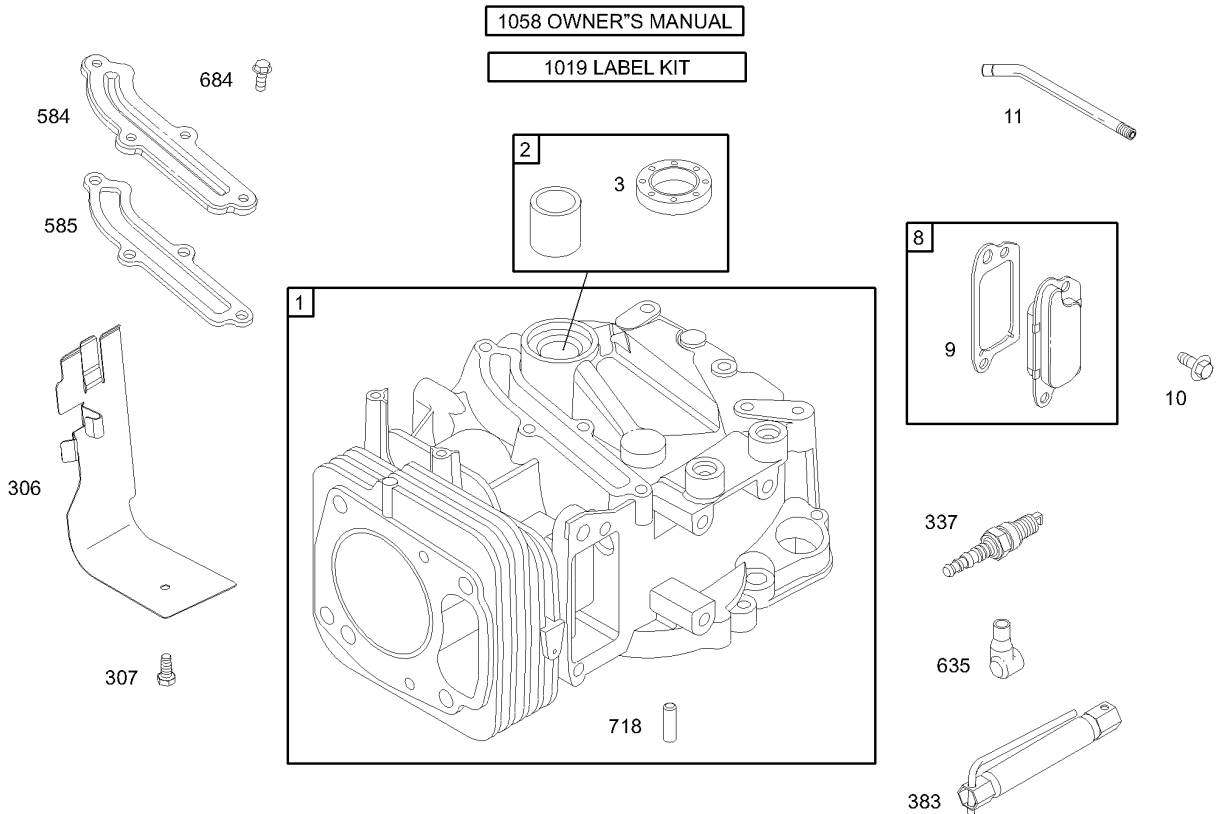
Ref	Part No.	Qty.	Description
1	104-8679-03	1	Bail-Brake
2	104-8678	1	Handle-Control
3	99-1589	1	Lever-Traction
4	99-1588	1	Bar-Control, Traction
5	105-6842	1	Guide-LH
6	108-8157	1	Cable-Brake
7	86-9671	1	Guide-Rope
8	3256-23	1	Washer-Flat
9	105-6841	1	Guide-RH
10	108-8136	1	Decal-Handle
11	95-4453	1	Screw
12	99-5239	1	Anchor-Cable
13	3256-1	1	Washer-Flat
14	3296-73	2	Nut-Lock, NI
15	108-8158	1	Cable-Traction
16	108-8145-03	2	Support-Handle
17	701243	4	Screw-HWHTF
18	27-6600	4	Spacer-Coupling
19	104-8690	1	Spring-Torsion
20	108-8162	4	Knob-Locking
21	55-9670	2	Washer
22	92-2260	2	Screw-Handle
23	107-7476-05	1	Handle-Lower
24	92-2260	2	Screw-Handle

Ref	Part No.	Qty.	Description
26	32144-53	1	Screw-SHWH
27	107-3783-05	1	Handle-Upper
28	106-6805	1	Guide-Cable
30	108-9452	1	Hook-Rope, Displacement



Rear Bag Assembly

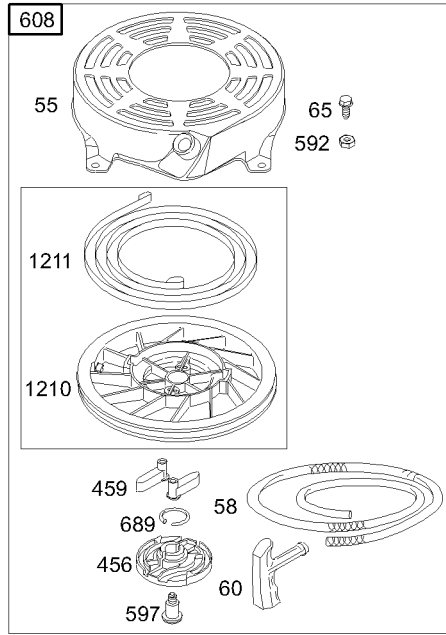
Ref	Part No.	Qty.	Description
1	107-3789	1	Grass Bag ASM
2	107-3785-03	1	Bag Frame ASM



Assemblies include all parts shown in frames.

Cylinder Assembly Briggs and Stratton 122602-0120-E1

Ref	Part No.	Qty.	Description
1	499678	1	Cylinder Assembly
2	399269	1	Bushing/Seal Kit
3	299819	1	Seal-Oil
8	495786	1	Breather ASM
9	272481	1	Gasket-Breather
10	691125	1	Screw
11	691260	1	Tube-Breather
306	691232	1	Shield-Cylinder
307	690345	1	Screw
337	692051	1	Sparkplug
383	19374	1	Wrench-Spark Plug
584	692342	1	Cover-Breather Passage
585	691879	1	Gasket-Passage, Breather
635	66538	1	Boot-Plug, Spark
684	690345	1	Screw
718	690959	1	Pin-Locating
1019	695811	1	Label Kit
1058	274979	1	Manual-Owner's

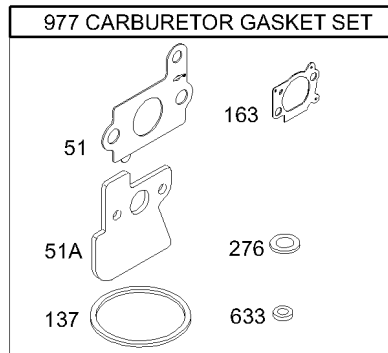
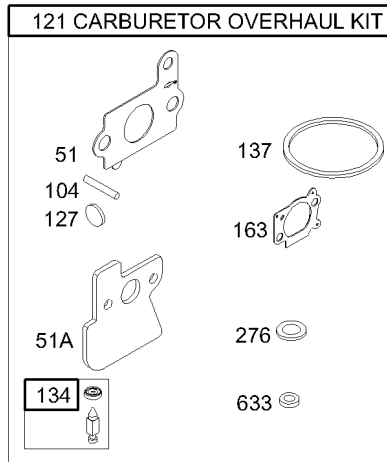


Assemblies include all parts shown in frames.

Starter Assembly Briggs and Stratton 122602-0120-E1

Ref	Part No.	Qty.	Description
⑦55	691421	1	Housing–Starter, Rewind
⑦58	280399	1	Rope–Starter (Cut To Required Length)
⑦60	281434	1	Grip–Rope, Starter
⑦65	690837	1	Screw
⑦456	692299	1	Plate–Friction, Pawl
⑦459	281505	1	Ratchet–Pawl
⑦592	690800	1	Nut
⑦597	691696	1	Screw
⑦608	497680	1	Starter–Rewind
⑦689	691855	1	Spring–Friction
⑦1210	498144	1	Pulley/Spring ASM
⑦1211	498144	1	Pulley/Spring ASM

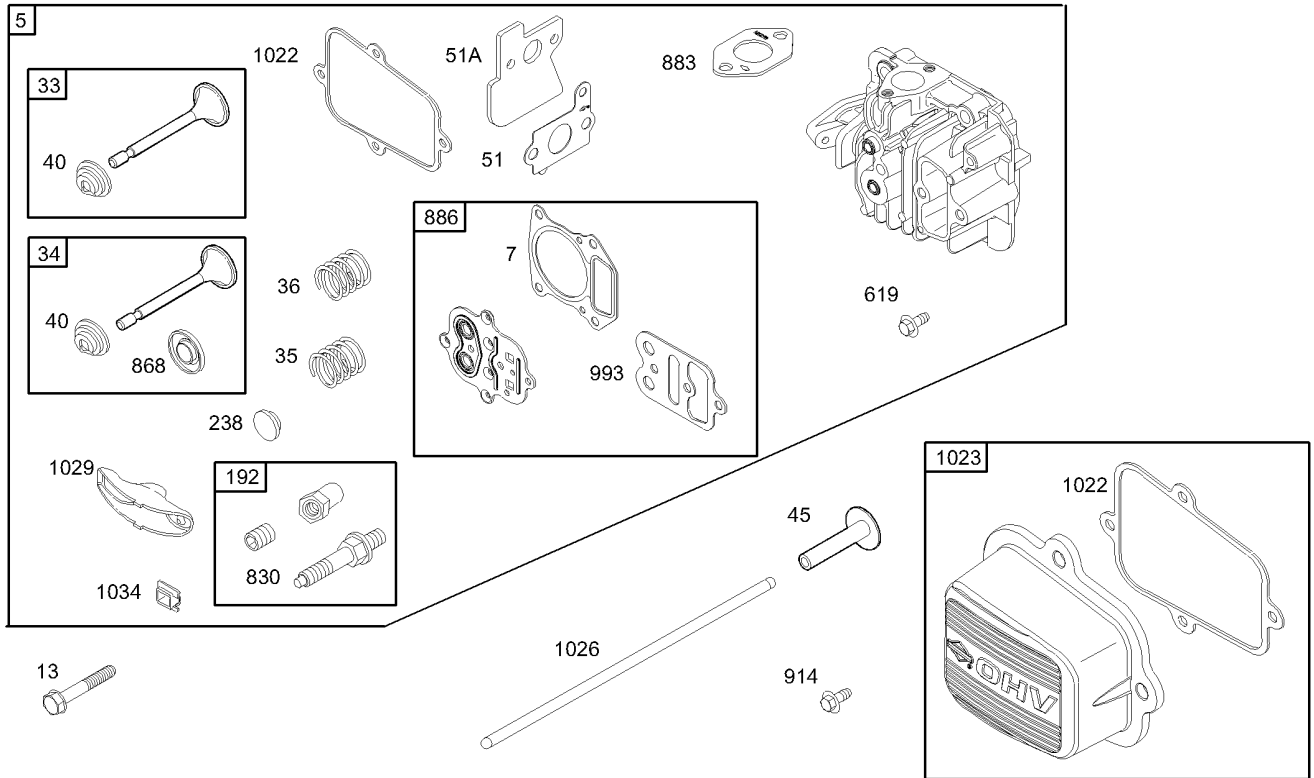
--	--	--	--



Assemblies include all parts shown in frames.

Carburetor Overhaul Kit Assembly Briggs and Stratton 122602-0120-E1

Ref	Part No.	Qty.	Description				
③④51 ⑤⑥	692668	1	Gasket-Intake				
③④51A ⑤⑥	692799	1	Gasket-Intake				
⑤⑦104	691242	1	Pin-Hinge, Float				
⑦121	692703	1	Carburetor Overhaul Kit				
⑤⑦127	694468	1	Plug-Welch				
⑤⑦134	398188	1	Needle/Seat Kit				
⑤⑥137 ⑦	693981	1	Gasket-Bowl, Float				
③④163 ⑤⑥	691894	1	Gasket-Cleaner, Air				
⑤⑥276 ⑦	271716	1	Washer-Sealing				
⑤⑥633 ⑦	691321	1	Seal-Shaft, Choke/Throttle				
⑦977	692704	1	Gasket Set-Carburetor				

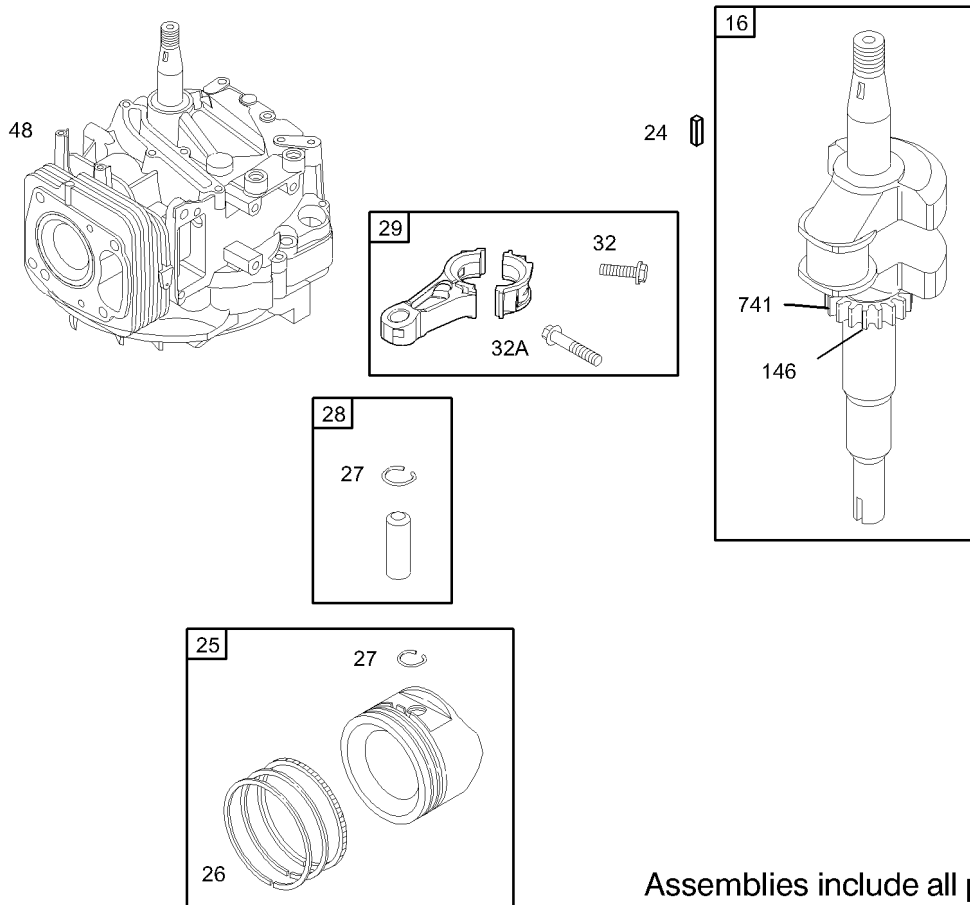


Assemblies include all parts shown in frames.

Cylinder Head Assembly Briggs and Stratton 122602-0120-E1

Ref	Part No.	Qty.	Description
75	695276	1	Head-Cylinder
77	695166	1	Cylinder Head Gasket
13	691137	1	Screw
33	499642	1	Valve-Exhaust
34	499641	1	Valve-Intake
35	691304	1	Spring-Valve
36	691304	1	Spring-Valve
40	692194	1	Retainer-Valve
45	690977	1	Valve-Tappet
51	692668	1	Gasket-Intake
51A	692799	1	Gasket-Intake
192	694543	1	Adjuster-Arm, Rocker
238	691300	1	Cap-Valve
619	691108	1	Screw
830	694544	1	Stud-Arm, Rocker
868	692044	1	Seal-Valve
883	691893	1	Gasket-Exhaust
886	696268	1	Cylinder Head/Plate Gasket Kit
914	691127	1	Screw
993	694088	1	Gasket-Plate, Cylinder Head
1022	691890	1	Gasket-Cover, Rocker
1023	692694	1	Cover-Rocker
1026	692045	1	Rod-Push
1029	691230	1	Arm-Rocker

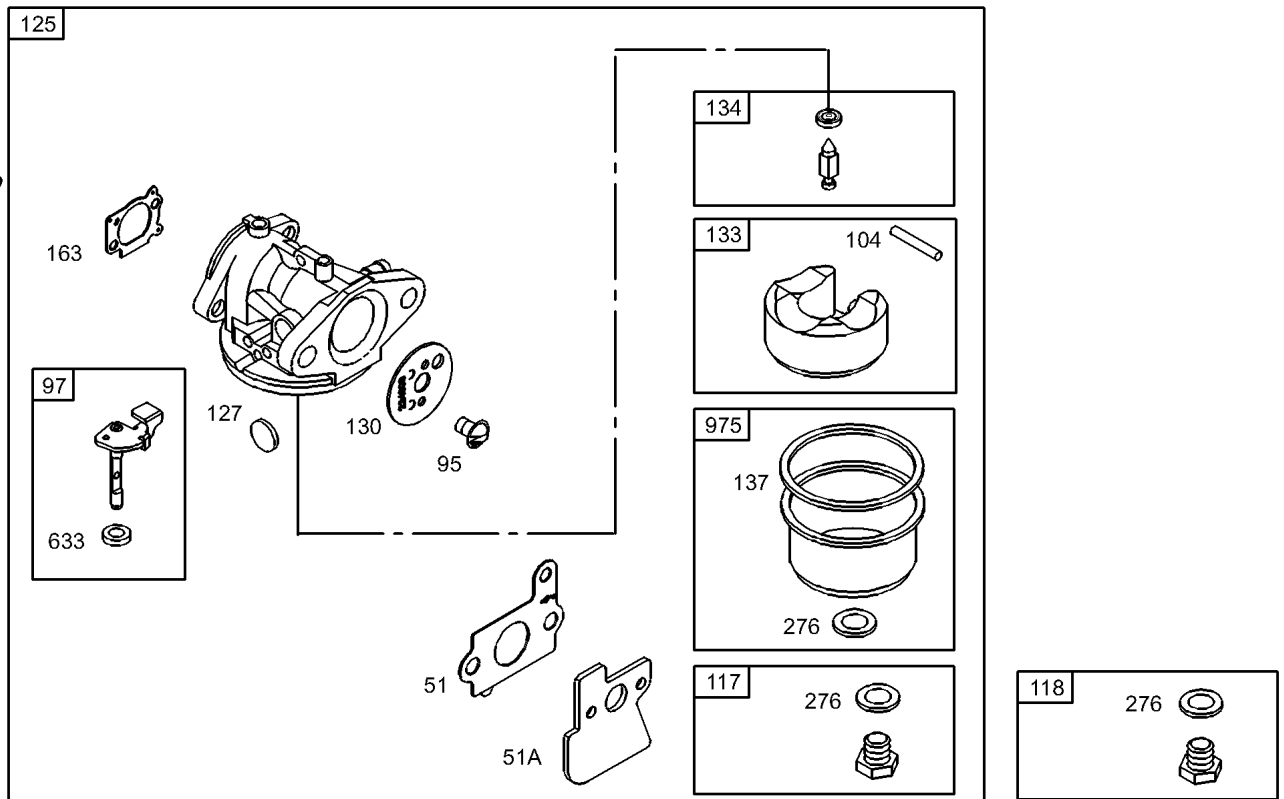
Ref	Part No.	Qty.	Description
1034	691343	1	Guide-Rod, Push



Assemblies include all parts shown in frames.

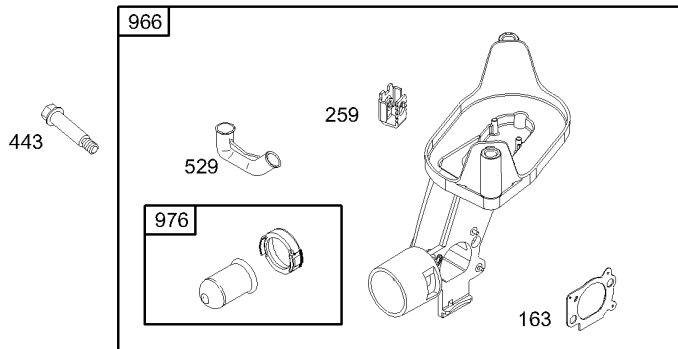
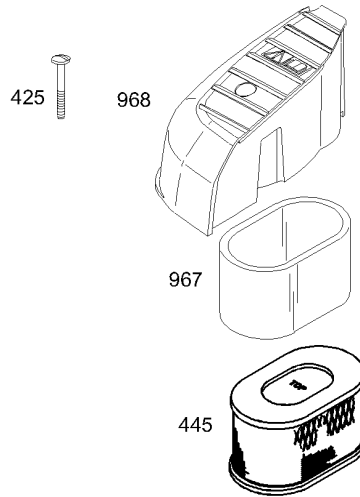
Crankshaft Assembly Briggs and Stratton 122602-0120-E1

Ref	Part No.	Qty.	Description
16	695950	1	Crankshaft
24	222698	1	Key
25	499627	1	Piston ASM (Standard)
25	692788	1	Piston Assembly (.010 Oversize)
25	692789	1	Piston ASM (.020In Oversize)
25	692790	1	Piston Assembly (.030 Oversize)
26	499631	1	Ring Set (Standard)
26	692785	1	Ring Set (.010In Oversize)
26	692786	1	Ring Set (.020In Oversize)
26	692787	1	Ring Set (.030In Oversize)
27	691866	1	Lock-Pin, Piston
28	499423	1	Pin-Piston (STD)
29	499424	1	Rod-Connecting
32	691664	1	Screw
32A	695759	1	Screw
48	694898	1	Short Block
146	690979	1	Key-Timing
741	691830	1	Gear-Timing



Carburetor Assembly Briggs and Stratton 122602-0120-E1

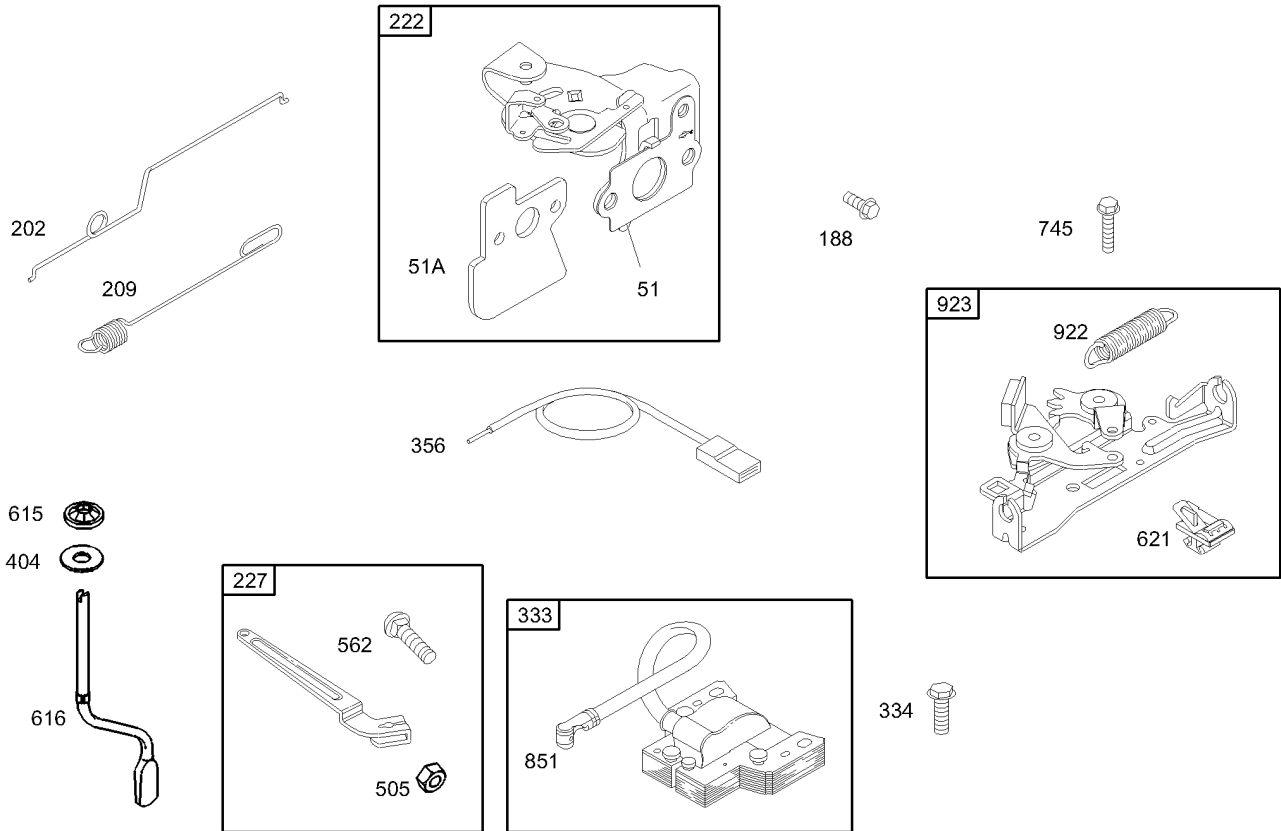
Ref	Part No.	Qty.	Description
3 4 51 5 6	692668	1	Gasket-Intake
3 4 51A 5 6	692799	1	Gasket-Intake
7 95	691636	1	Screw
7 97	499682	1	Shaft-Throttle
5 7 104	691242	1	Pin-Hinge, Float
7 117	498978	1	Jet-Main (Standard)
7 118	498975	1	Jet-Main (High Altitude)
7 125	694202	1	Carburetor
5 7 127	694468	1	Plug-Welch
7 130	691203	1	Valve-Throttle
7 133	398187	1	Float-Carburetor
5 7 134	398188	1	Needle/Seat Kit
5 6 137 7	693981	1	Gasket-Bowl, Float
3 4 163 5 6	691894	1	Gasket-Cleaner, Air
5 6 276 7	271716	1	Washer-Sealing
7 365	691136	1	Screw
5 6 633 7	691321	1	Seal-Shaft, Choke/Throttle
7 975	493640	1	Bowl-Float



Assemblies include all parts shown in frames.

Air Cleaner Assembly Briggs and Stratton 122602-0120-E1

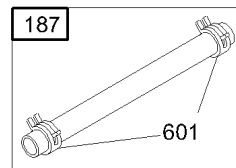
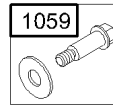
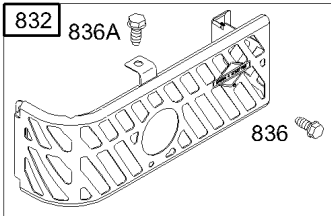
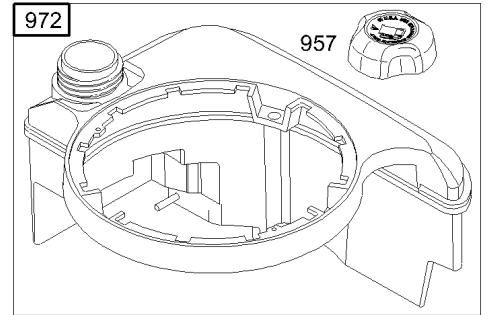
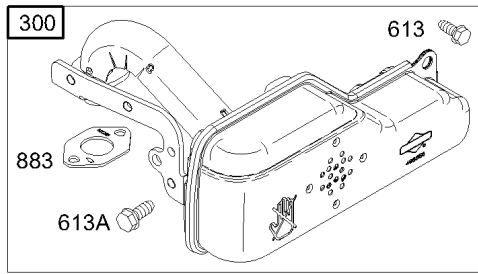
Ref	Part No.	Qty.	Description
3 4 163 5 6	691894	1	Gasket-Cleaner, Air
7 259	691189	1	Bracket-Clamp, Casing
7 425	690244	1	Screw
7 443	690255	1	Screw
7 445	690610	1	Filter-Air Cleaner Cartridge
7 529	692937	1	Grommet
7 966	690243	1	Base-Primer, Air Cleaner
7 967	273356	1	Filter-Pre Cleaner
7 968	692692	1	Cover-Cleaner, Air
7 976	694395	1	Primer-Carburetor



Assemblies include all parts shown in frames.

Governor Assembly Briggs and Stratton 122602-0120-E1

Ref	Part No.	Qty.	Description
③ ④ 51	692668	1	Gasket-Intake
⑤ ⑥			
③ ④ 51A	692799	1	Gasket-Intake
⑤ ⑥			
⑦ 188	693168	1	Screw (Control Bracket)
⑦ 202	691303	1	Link-Governor, Mechanical
⑦ 209	691292	1	Spring-Governor
⑦ 222	692723	1	Bracket-Control
⑦ 227	690783	1	Lever-Control, Governor
⑦ 333	802574	1	Armature-Magneto
⑦ 334	691061	1	Screw
⑦ 356	692390	1	Wire-Stop
⑦ 404	690272	1	Washer
⑦ 505	231082	1	Nut (Governor Control Lever)
⑦ 562	92613	1	Bolt-Lever
⑦ 615	690340	1	Retainer-Shaft, Governor
⑦ 616	691308	1	Crank-Governor
⑦ 621	692310	1	Switch-Stop
⑦ 745	691648	1	Screw
⑦ 851	493880	1	Terminal-Spark Plug
⑦ 922	691831	1	Spring-Brake
⑦ 923	691994	1	Brake ASM



Assemblies include all parts shown in frames.

Muffler and Fuel Tank Assembly Briggs and Stratton 122602-0120-E1

Ref	Part No.	Qty.	Description
187	691050	1	Line-Fuel (Cut To Required Length)
190	690940	1	Screw
300	694248	1	Muffler
601	95162	1	Clamp-Hose
613	691108	1	Screw
613A	691140	1	Screw
670	692294	1	Spacer-Tank, Fuel
832	691466	1	Guard-Muffler
836	690960	1	Screw
836A	691147	1	Screw
883	691893	1	Gasket-Exhaust
957	692046	1	Cap-Tank, Fuel
972	499618	1	Tank-Fuel
1059	692311	1	Screw/Washer Kit

--	--	--	--

NOTES

