



Z588E Z Master[®] With 60in TURBO FORCE[®] Side Discharge Mower

Model No. 74255 - 250000001 and up.

Parts Catalog

Ordering Replacement Parts

To order replacement parts, please supply the part number, the quantity, and the description of each part desired.

Understanding Reference Numbers

Each Identified part in an illustration has a reference number. The reference number for a part also appears in the parts list, along with other information about the part.

This catalog uses two special reference number formats, one to indicate parts in a service assembly and another to indicate the quantity of a given part in an illustration.

Service Assembly Reference Numbers

Parts in service assemblies have reference numbers in the form a:b. The a represents the reference number of the entire service assembly and the b represents a sequential number unique to each part within the service assembly.

For example, a wheel assembly might be identified by reference number 6, the tire by 6:1, the valve by 6:2, and the wheel by 6:3. When you order the assembly identified by reference number 6, you receive all parts identified by reference numbers 6:1, 6:2, and 6:3. However, you may also order any part individually. Reference numbers of this type appear in illustrations and in part lists.

Reference Numbers Indicating Quantity

In an illustration, if a reference number indicates more than one part, the reference number has the form nX y. The n represents the quantity of the part, the X is the multiplication symbol, and the y represents the reference number.

For example, in an illustration, the reference number 2X 37 means that two of the parts identified by reference number 37 are indicated.

Contents

Description	Page	Description	Page
Front Frame Assembly 3	Rubber Deflector Assembly No. 106-3249 27
Castor and Wheel Assembly 5	Lever Assembly No. 106-3242 28
Main Frame Assembly 6	Crankshaft Assembly Kohler CH745-0007 29
Brake and Wheel Hub Assembly 7	Crankcase Assembly Kohler CH745-0007 30
Steering Control Assembly 8	Oil Pan and Lubrication Assembly Kohler CH745-0007 31
Hydraulic System Assembly 9	Head, Valve and Breather Assembly Kohler CH745-0007 32
Seat and Roll-Over-Protection-System Assembly 11	Ignition and Electrical Assembly Kohler CH745-0007 33
Suspension Seat Assembly No. 106-9988 12	Blower Housing and Baffle Assembly Kohler CH745-0007 34
Roll-Over-Protection-System Assembly No. 108-1097 13	Starting System Assembly Kohler CH745-0007 35
Deck Connection Assembly 14	Fuel System Assembly Kohler CH745-0007 36
Drive Idler Assembly 15	Engine Control Assembly Kohler CH745-0007 37
Z-Stand Assembly 16	Air Intake and Filtration Assembly Kohler CH745-0007 38
Engine and Clutch Assembly 17	Exhaust Assembly Kohler CH745-0007 39
Muffler and Guard Assembly 18	Attachments and Accessories List 40
Fuel Tank Assembly 19		
Electrical Assembly 21		
60in Deck Assembly 23		
Spindle Assembly No. 106-3217 25		
Deck Decal Assembly No. 107-1624 26		

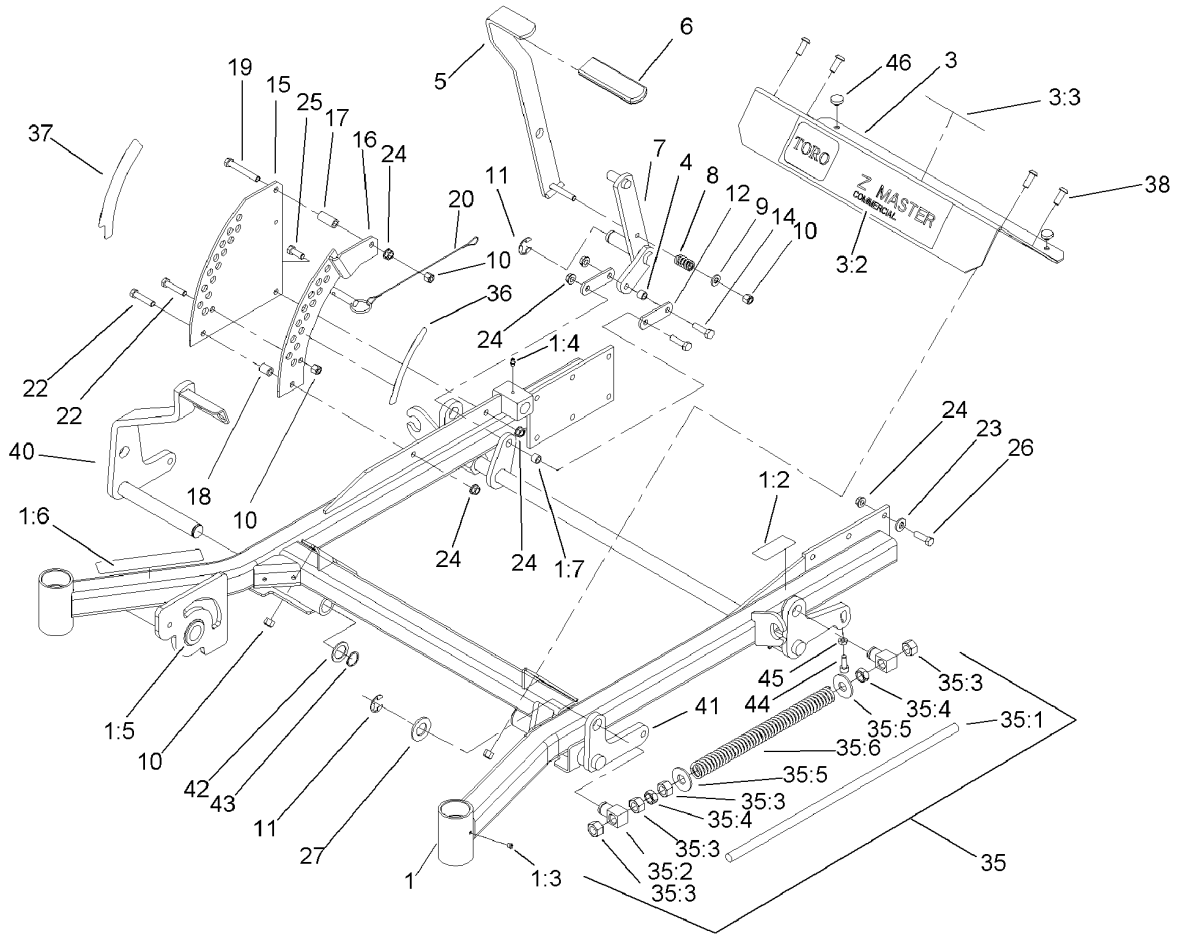
Part Description Abbreviations

Part descriptions in this catalog may include the following abbreviations.

AR. as required	INC. incorporated
ASM. assembly	LH. left hand
BBC. blade brake clutch	NI. nylon insert
CARR. carriage	NPTF. national pipe thread fine
DEG. degrees	PFH. phillips flat head
EXT. external	PPH. phillips pan head
FH. flat head	PPHTF. phillips pan head thread forming
GA. gauge	PRH. phillips round head
HF. hex flange	PTH. phillips truss head
HH. hex head	PTO. power-take-off
HHF. hex head flange	RH. right hand
HHFTF. hex head flange thread forming	ROPS. roll-over-protection-system
HJ. hex jam	SFH. slotted fillister head
HLH. hex lag head	SHH. slotted hex head
HOC. height-of-cut	SHWH. slotted hex washer head
HSBH. hex socket button head	SPH. slotted pan head
HSFH. hex socket flat head	SQH. square head
HSH. hex socket head	SRH. slotted round head
HWH. hex washer head	STD. standard
HWHTF. hex washer head thread forming	TAP. self tapping
HYD. hydraulic	TTH. torx truss head

Footnotes

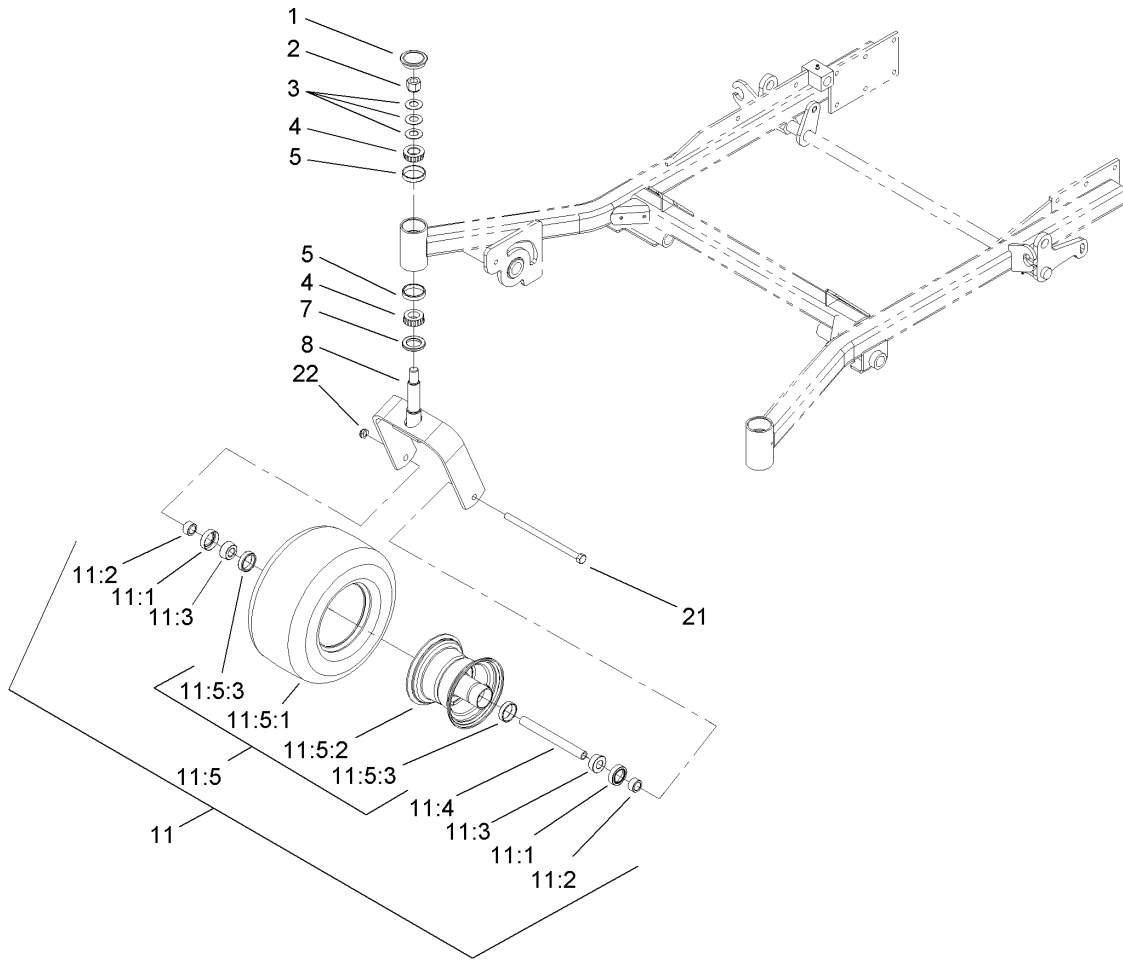
- ❶ Not illustrated
- ❷ Obtain from your local Kohler dealer
- ❸ Not serviced separately



Front Frame Assembly

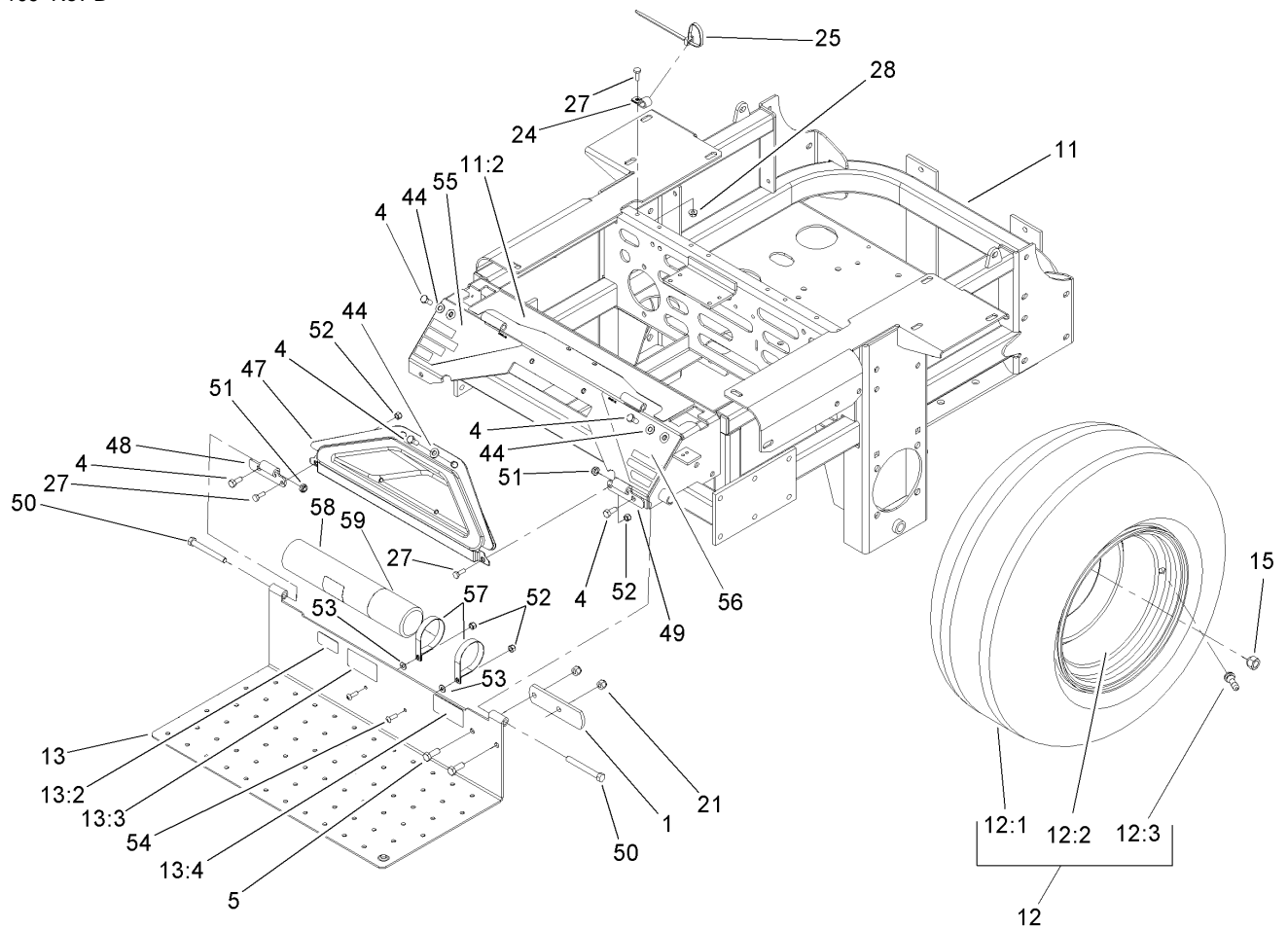
Ref	Part No.	Qty.	Description
1	106-8998	1	Frame ASM
1:2	107-1857	1	Decal-Brake, Parking
1:3	1-811010	2	Plug
1:4	302-19	5	Fitting-Grease
1:5	94-1291	2	Bushing
1:6	104-7759	1	Decal-Warning
1:7	103-1918	1	Bushing
3	106-9981	1	Front Floorpan ASM
3:2	106-7451	1	Decal
3:3	107-2112	1	Decal-Warning
4	103-1918	1	Bushing
5	103-2083-03	1	Lift Lever ASM
6	1-633295	1	Grip-Lever, Lift
7	103-2064-03	1	Arm-Lift, Deck
8	1-633325	1	Spring-Compression
9	3256-24	1	Washer-Flat
10	3296-39	9	Nut-Lock, NI
11	32151-103	5	Ring-Snap
12	1-633068	2	Arm-Lift, Deck
14	323-29	2	Screw-HH
15	1-633889-01	1	Plate-Lift, Deck
16	1-632899-01	1	Plate-Lift, Deck
17	1-633082	1	Bushing-Lever, Lift
18	1-633080	1	Bushing-Lever, Lift

Ref	Part No.	Qty.	Description
19	323-13	1	Screw-HH
20	106-9951	1	Hitch Pin ASM
22	323-9	2	Screw-HH
23	98-5975	12	Washer-Belleville
24	3290-357	15	Nut-HHF, Whiz
25	323-6	1	Screw-HH
26	323-7	12	Screw-HH
27	3256-29	4	Washer-Flat
35		2	Front Frame Spring ASM
35:1	1-633096	1	Rod-Lift, Deck
35:2	1-633441	2	Swivel-Deck Mount, Rear
35:3	3217-11	4	Nut-Hex
35:4	3218-6	2	Nut-Jam
35:5	3256-7	2	Washer-Flat
35:6	1-633064	1	Spring-Support, Deck
36	107-1861	1	Decal-Height, Deck
37	107-1860	1	Decal-Height, Deck
38	3274-94	4	Screw-HSBH
40	106-8983-01	1	RH Deck Lift ASM
41	106-8984-01	1	LH Deck Lift ASM
42	1-523157	2	Washer-Spacer, 14 GA
43	32151-29	2	Ring-Retaining
44	3274-18	2	Screw-HSH
45	3218-2	2	Nut-Jam



Castor and Wheel Assembly

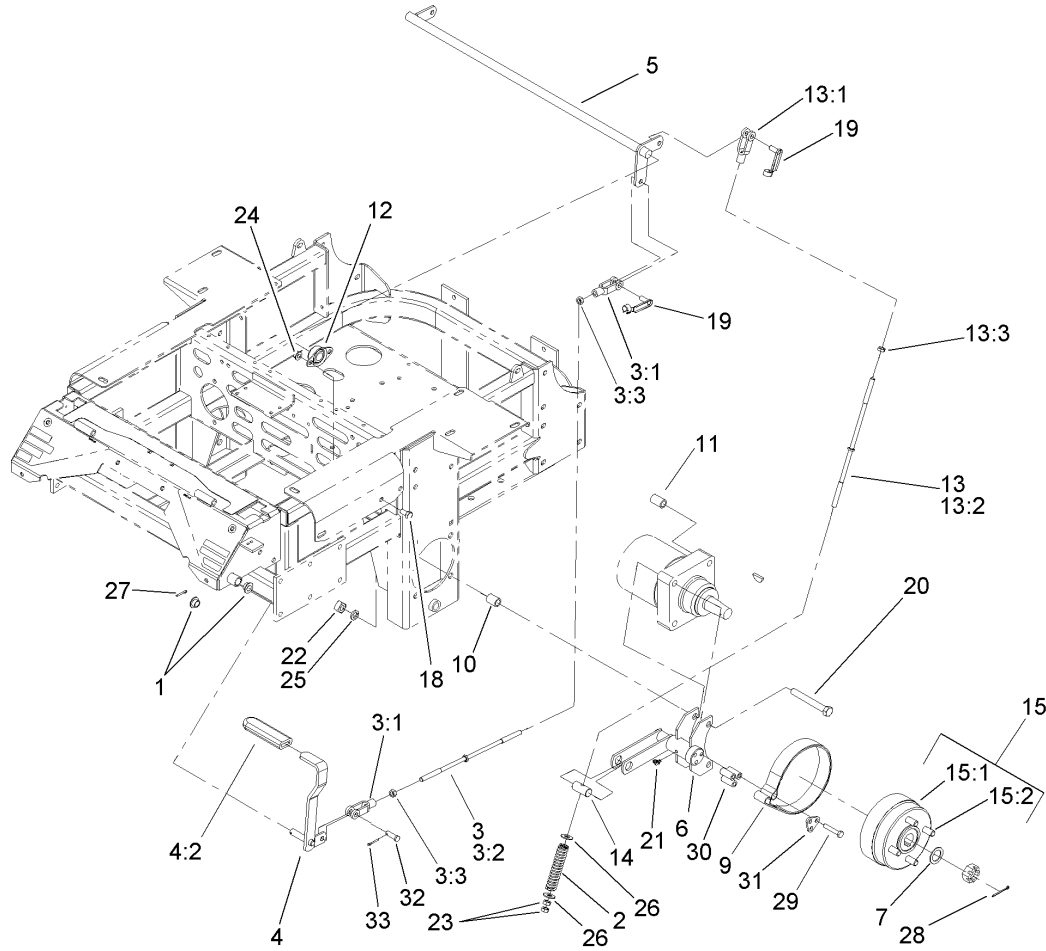
Ref	Part No.	Qty.	Description
1	103-4882	2	Cap-Grease
2	3296-51	2	Nut-Lock, NI
3	1-633508	6	Washer-Bellville
4	254-94	4	Bearing-Cone, Tapered
5	254-72	4	Bearing-Cup, Tapered
7	1-543511	2	Seal-Grease
8	103-1474-01	2	Fork-Caster
11	1-644251	2	Caster Wheel ASM
11:1	1-633580	2	Seal-Bearing
11:2	1-633581	2	Spacer-Bearing
11:3	1-633585	2	Bearing-Cone, Taper
11:4	1-633959	1	Spacer-Caster, Front
11:5		1	Wheel And Tire ASM
11:5:1	1-523009	1	Tire
11:5:2	1-633987	1	Wheel
11:5:3	1-633584	2	Bearing-Cup
21	325-39	2	Screw-HH
22	3296-45	2	Nut-Lock, NI



Main Frame Assembly

Ref	Part No.	Qty.	Description
1	1-633964-03	1	Stop-Brake, Park
4	322-43	6	Screw-HH
5	323-6	2	Screw-HH
11	108-1095	1	Main Frame ASM
11:2	107-8076	1	Decal-Console, Top
12	1-633970	2	Wheel And Tire ASM
12:1	1-633993	1	Tire
12:2	1-633992	1	Wheel
12:3	232-27	1	Stem-Valve
13	107-1859	1	Floorpan
13:2	106-7486	1	Decal-Efi
13:3	98-4387	1	Decal-Protection, Ear
13:4	107-1864	1	Decal-Location, Manual
15	242-50	8	Nut-Lug
21	3296-39	2	Nut-Lock, NI
24	1-513762	1	Clip-Loom
25	1-303335	1	Tie-Plastic
27	321-4	3	Screw-HH
28	32128-33	1	Nut-HF
44	3256-70	6	Washer-Flat
47	106-7498	1	Pocket
48	106-7488-03	1	Hinge-Floorpan, LH
49	106-7489-03	1	Hinge-Floorpan, RH
50	323-20	2	Screw-HH

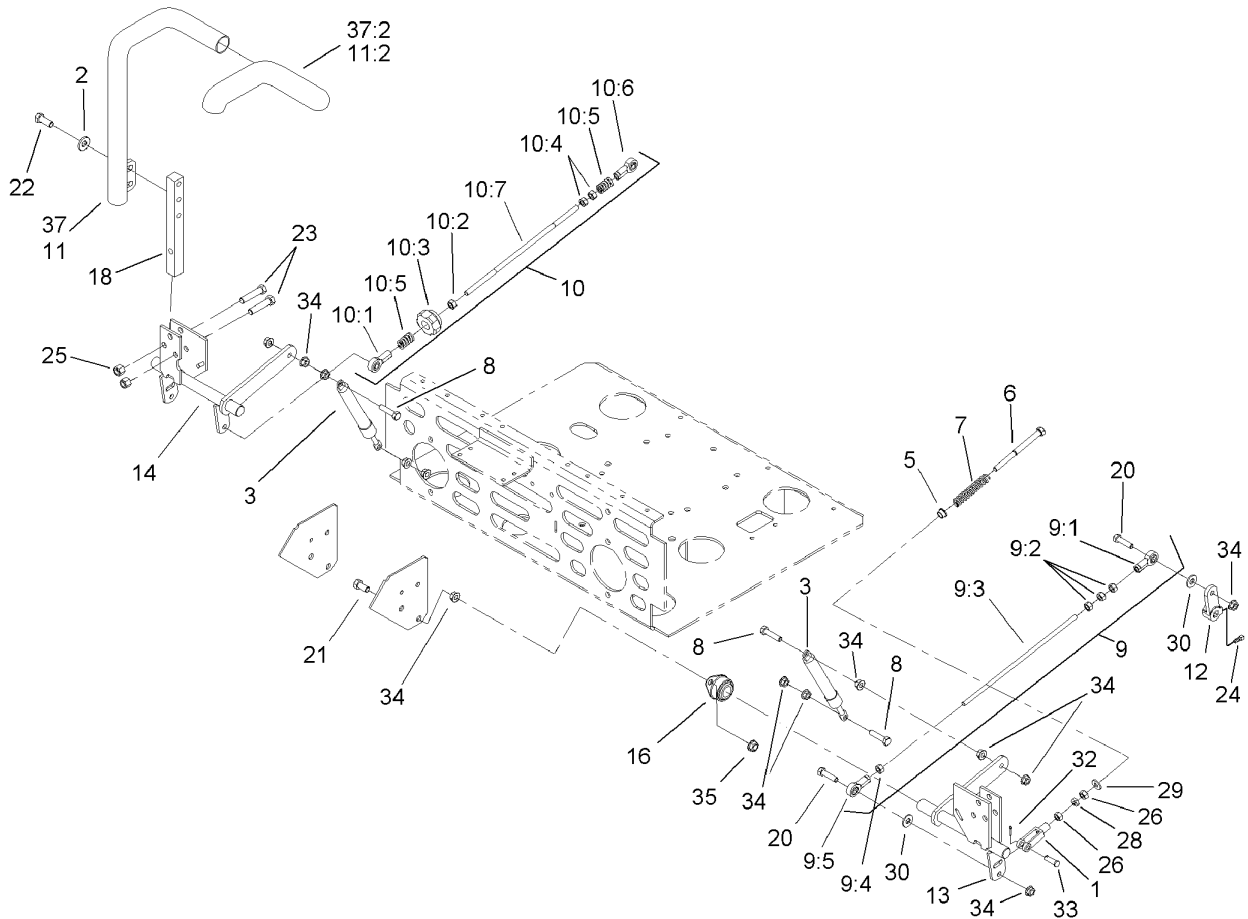
Ref	Part No.	Qty.	Description
51	3296-59	2	Nut-Lock, NI
52	3296-42	4	Nut-Lock, NI
53	3256-63	2	Washer-Flat
54	3258-166	2	Screw-PRH
55	106-9989	1	Decal-Warning
56	106-7492	1	Decal-Danger
57	107-1865	2	R-Clamp
58	104-7050	1	Housing-Manual
59	104-7048	1	Cap-Housing



Brake and Wheel Hub Assembly

Ref	Part No.	Qty.	Description
1	1-513140	2	Bearing-Control
2	1-633454	2	Spring-Brake
3	103-4332	1	Brake Rod And Yoke ASM
3:1	1-633131	2	Yoke-Linkage, Brake
3:2	1-633477	1	Rod-Brake
3:3	3219-3	2	Nut-Hex
4	1-634500	1	Brake Lever ASM
4:2	1-633268	1	Grip-Lever, Brake
5	1-632217-03	1	Shaft-Brake
6	103-0352-03	2	Bracket-Brake
7	1-523157	2	Washer-Spacer, 14 GA
9	103-0355	2	Band-Brake
10	1-633380	4	Spacer-Wheel, Short
11	1-633382	4	Spacer-Wheel, Long
12	1-633102	2	Bearing-Flange, Side
13	103-4333	2	Brake Rod And Yoke ASM
13:1	1-633131	1	Yoke-Linkage, Brake
13:2	1-633477	1	Rod-Brake
13:3	3219-3	1	Nut-Hex
14	1-633144	2	Pin-Trunion
15	103-0590	2	Hub And Wheel ASM
15:1	103-0589	1	Wheel Hub ASM
15:2	1-633926	4	Stud-Wheel
18	323-4	4	Screw-HH

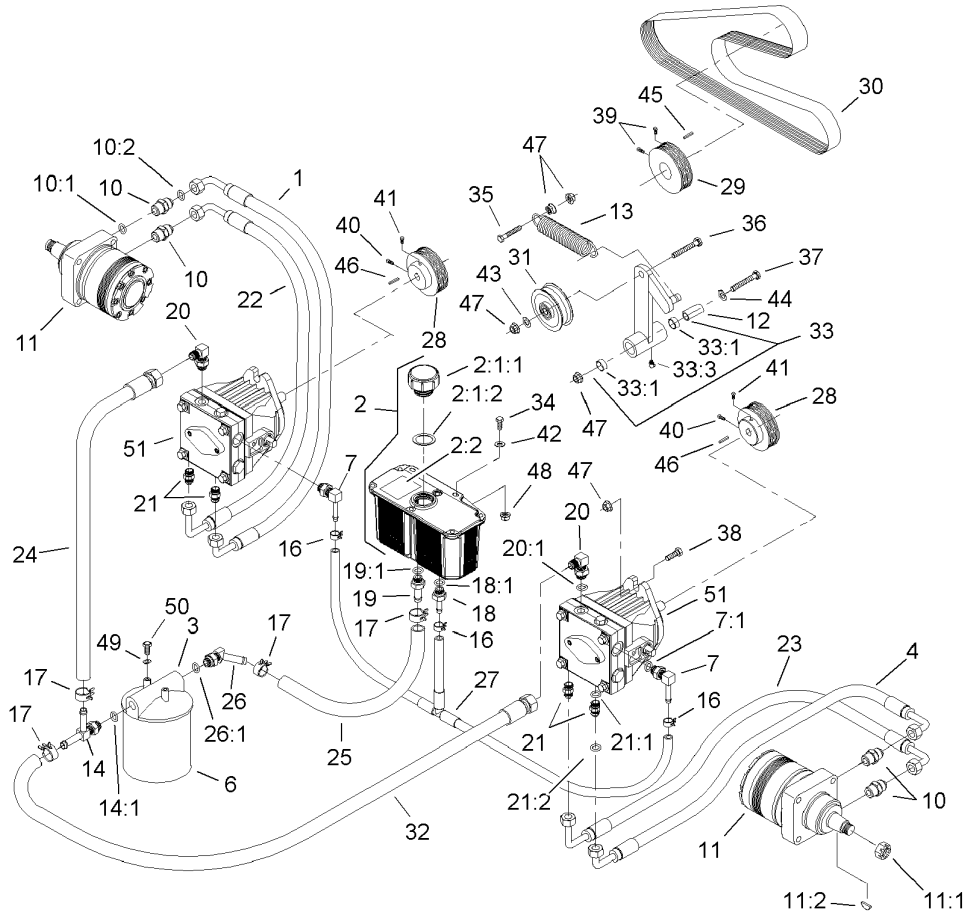
Ref	Part No.	Qty.	Description
19	103-2399	3	Pin-Spring, Clevis
20	325-17	8	Screw-HH
21	1481	2	Fitting-Grease
22	103-0131	8	Nut-Square
23	3219-3	4	Nut-Hex
24	3290-357	4	Nut-HHF, Whiz
25	3253-7	8	Washer-Lock
26	3256-4	4	Washer-Flat
27	3272-10	1	Pin-Cotter
28	1-806800	2	Pin-Cotter
29	322-9	6	Screw-HH
30	103-0384	6	Spacer
31	103-0374	2	Retainer-Band, Brake
32	1-808285	1	Pin-Clevis
33	3272-10	1	Pin-Cotter



Steering Control Assembly

Ref	Part No.	Qty.	Description
1	1-303105	2	Yoke-Adjustable
2	98-5975	4	Washer-Belleville
3	103-4079	2	Damper-Control, Motion
5	1-603735	2	Bushing-Flanged
6	1-603737	2	Bolt-Return, Neutral
7	1-603807	2	Spring-Return, Neutral
8	1-403180	4	Screw-HH
9	103-4331	1	Tracking Rod ASM
9:1	1-543017	1	Balljoint-RH
9:2	3219-2	3	Nut-Hex
9:3	103-3064	1	Link-Rod, Tracking
9:4	1-804524	1	Nut
9:5	1-633152	1	Balljoint-Thread, LH
10	103-4330	1	Tracking Rod ASM
10:1	1-543017	1	Balljoint-RH
10:2	3219-2	1	Nut-Hex
10:3	103-3060	1	Knob-Tracking
10:4	1-804524	2	Nut
10:5	1-323245	2	Spring-Compression
10:6	1-633152	1	Balljoint-Thread, LH
10:7	103-3064	1	Link-Rod, Tracking
11	108-7238	1	LH Lever ASM
11:2	106-9987	1	Grip-Control, Motion
12	1-632208	2	Arm-Control, Pump

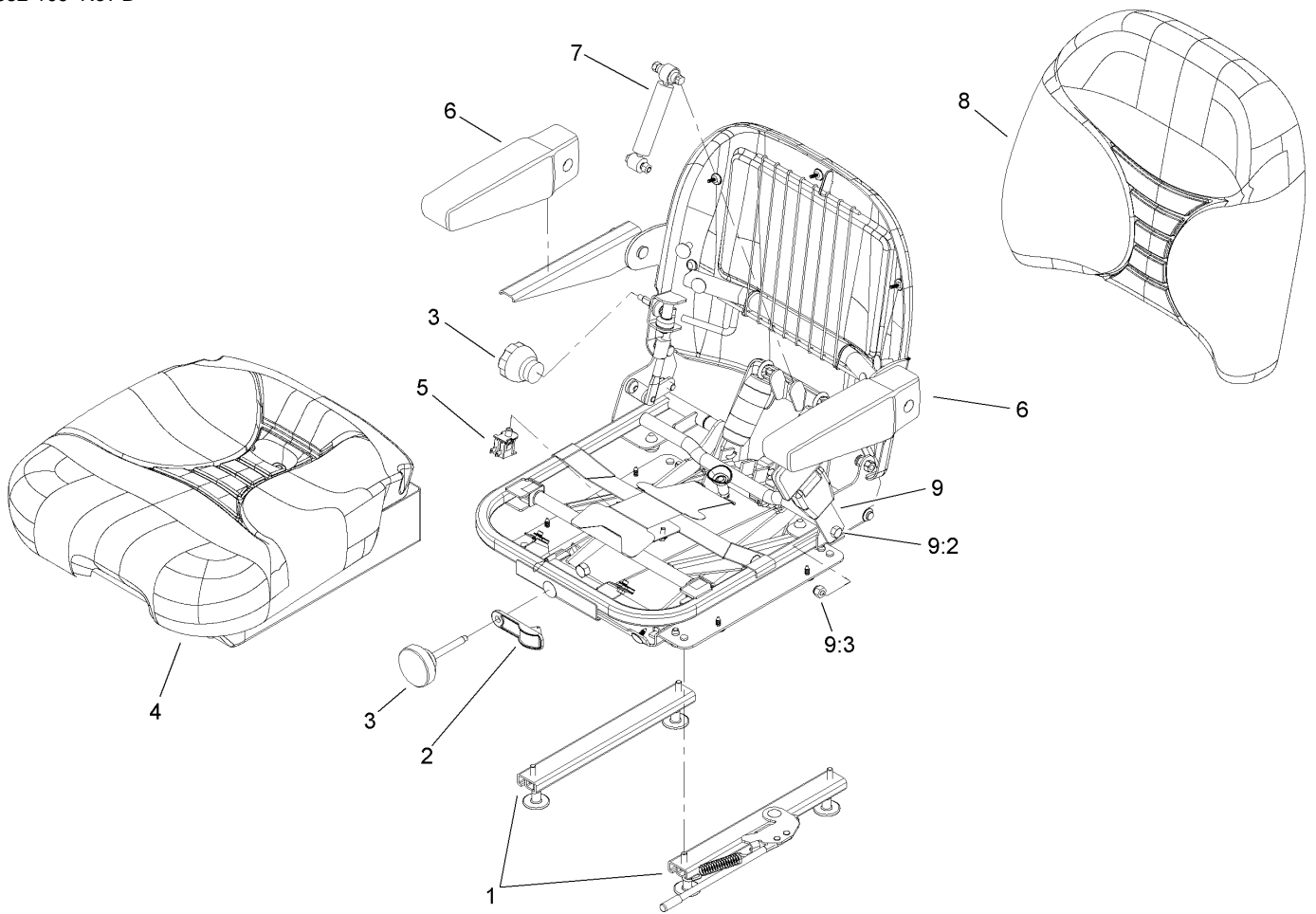
Ref	Part No.	Qty.	Description
13	103-4781	1	Control-Motion, LH
14	103-4782	1	Control-Motion, RH
16	1-633102	4	Bearing-Flange, Side
18	103-0407	2	Arm-Shaft, Control
20	322-6	4	Screw-HH
21	323-4	8	Screw-HH
22	323-6	4	Screw-HH
23	323-9	6	Screw-HH
24	1-803022	2	Screw-Set
25	3296-39	6	Nut-Lock, NI
26	3219-2	4	Nut-Hex
28	3220-2	2	Nut-Jam
29	3256-2	2	Washer-Flat
30	3256-3	4	Washer-Flat
32	3272-5	2	Pin-Cotter
33	1-808280	2	Pin-Clevis
34	32128-20	16	Nut-HF
35	3290-357	8	Nut-HHF, Whiz
37	108-7237	1	RH Lever ASM
37:2	106-9987	1	Grip-Control, Motion



Hydraulic System Assembly

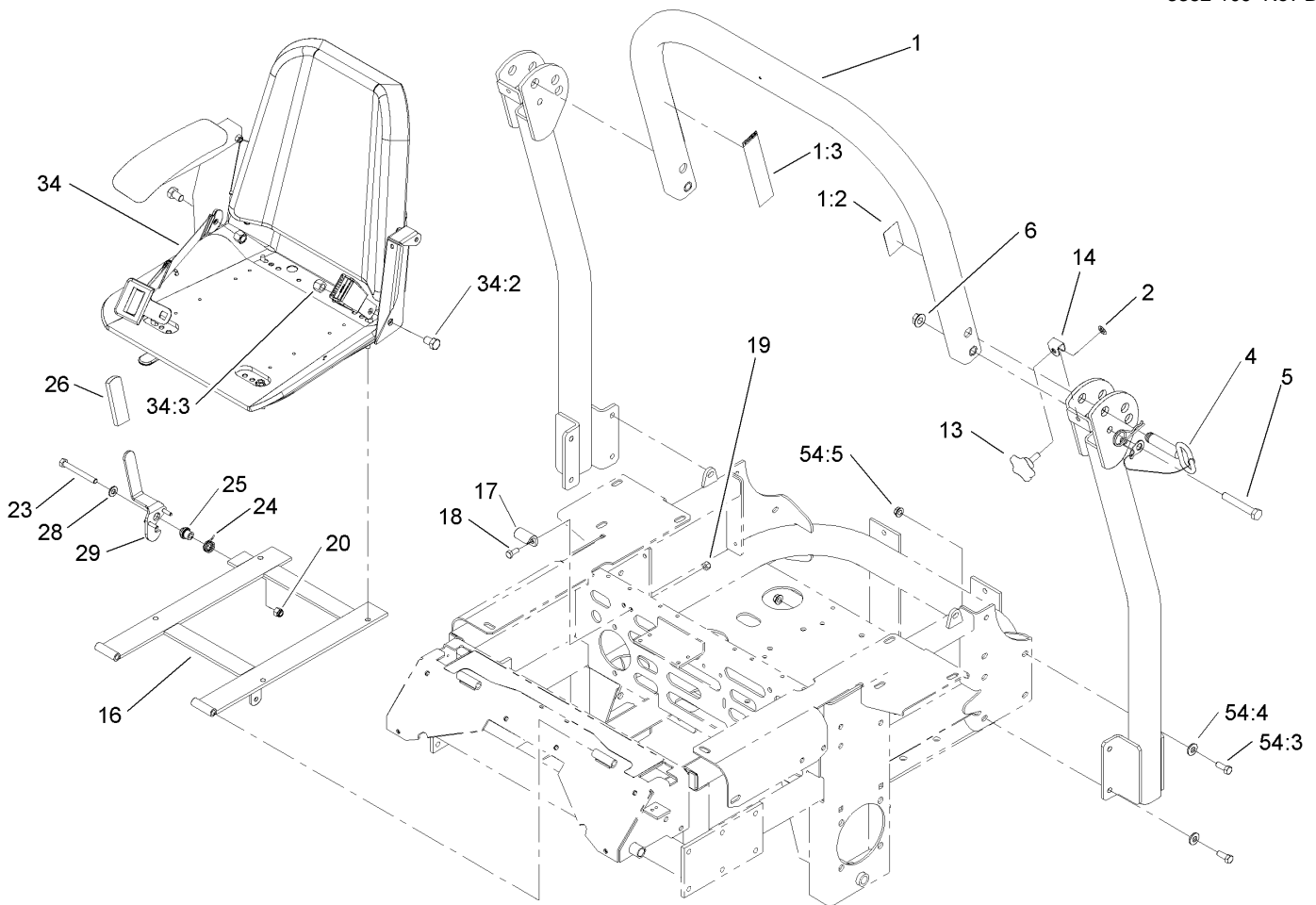
Ref	Part No.	Qty.	Description
1	103-3736	1	HYD Hose ASM
2	103-1947	1	HYD Reservoir ASM
2:1		1	Reservoir-HYD
2:1:1	103-1948	1	Cap-Reservoir, HYD
2:1:2	103-1949	1	Gasket-Cap
2:2	1-523552	1	Decal-Tank, HYD
3	104-7836	1	Head-Filter
4	103-3733	1	HYD Hose ASM
6	1-633750	1	Filter-HYD
6	1-633752	1	Filter-HYD, Winter
7	103-1799	2	Elbow-90 DEG
7:1	237-42	1	O-Ring
10	1-603991	4	Fitting-Straight
10:1	237-80	1	O-Ring
10:2	1-603992	1	O-Ring
11	103-6988	2	Motor-Wheel
11:1	1-809036	1	Nut-HH
11:2	3257-42	1	Key-Woodruff
11:99	1-000139	1	Bearing Kit
11:99	103-2748	1	Drive Link Kit
11:99	1-000099	1	Seal Kit
12	1-603384	1	Bushing-Pivot, Idler
13	103-3330	1	Spring-Extension
14	103-1828	1	Adapter-Run, Tee

Ref	Part No.	Qty.	Description
14:1	237-42	1	O-Ring
16	103-1716	3	Clamp-Hose
17	103-1988	4	Clamp-Hose
18	103-1801	1	Adapter-Straight
18:1	237-42	1	O-Ring
19	103-1912	1	Adapter-Straight
19:1	237-42	1	O-Ring
20	103-1802	2	Fitting-HYD, 90 DEG
20:1	1-603921	1	O-Ring
21	1-603990	4	Fitting-Straight
21:1	1-603920	1	O-Ring
21:2	1-603992	1	O-Ring
22	103-3737	1	HYD Hose ASM
23	103-3735	1	HYD Hose ASM
24	103-1826	1	HYD Hose ASM
25	103-1808	1	Hose-HYD
26	103-1807	1	Elbow-45 DEG
26:1	237-42	1	O-Ring
27	103-1806	1	HYD Hose ASM
28	103-6907	2	Sheave
29	1-633567	1	Sheave
30	103-7445	1	Belt-V
31	1-633167	1	Sheave-Idler
32	103-1827	1	HYD Hose ASM



Suspension Seat Assembly No. 106-9988

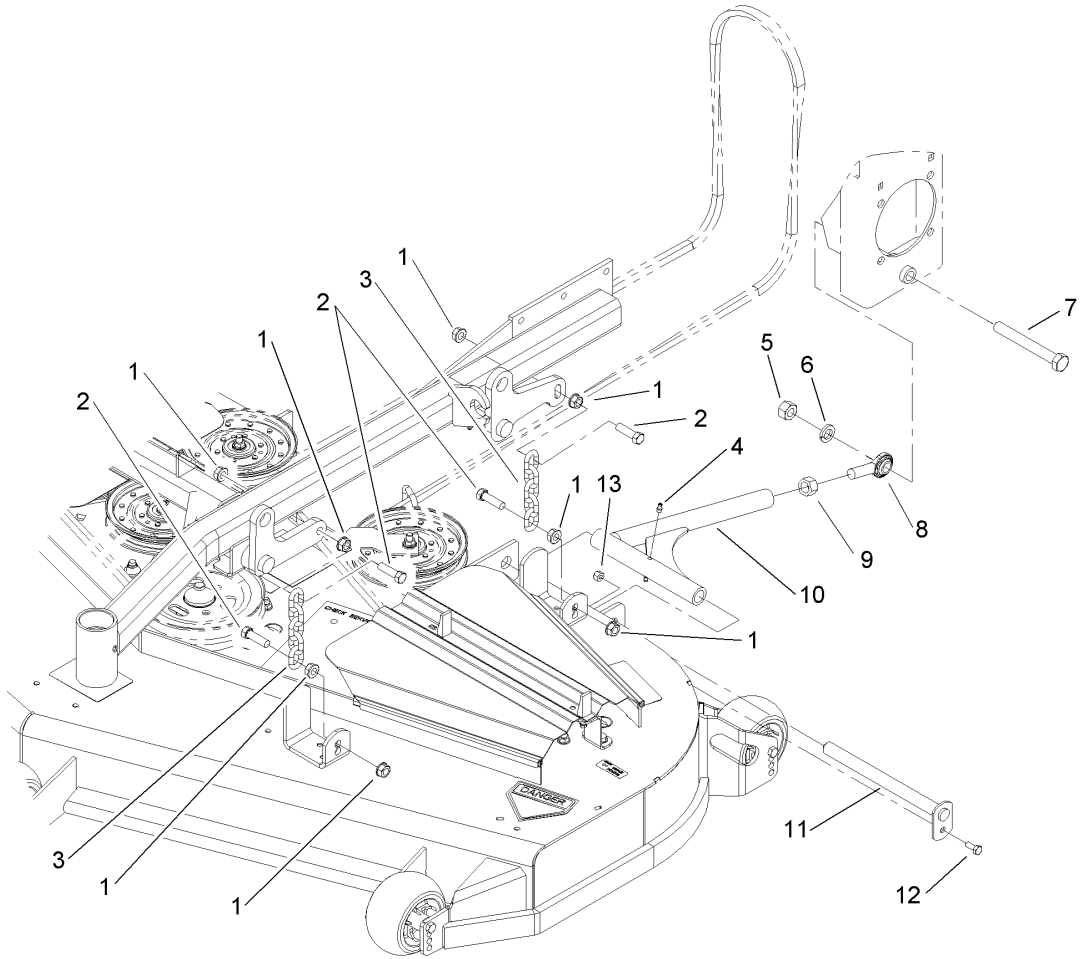
Ref	Part No.	Qty.	Description	
1	107-1880	1	Seat Track Kit	
2	107-1885	1	Weight Indicator Kit	
3	107-1881	1	Knob Kit	
4	107-1883	1	Bottom Cushion Kit	
5	107-1886	1	Switch Kit	
6	107-1887	1	Armrest Kit	
7	107-1884	1	Shock Absorber Kit	
8	107-1882	1	Back Cushion Kit	
9	103-4469	1	Seatbelt Kit	
9:2	3212-4	2	Screw-HH	
9:3	3296-38	2	Nut-Lock, NI	



Roll-Over-Protection-System Assembly No. 108-1097

Ref	Part No.	Qty.	Description
1		1	Upper Tube ASM
1:2	107-2101	1	Decal-ROPS
1:3	107-2102	1	Decal-Warning, Folding ROPS
2	107-3154	2	Nut-Push
4	103-4553	2	ROPS Fold Pin ASM
5	325-13	2	Screw-HH
6	32128-23	2	Nut-HF
13	106-0887	2	Knob
14	107-3124	2	Clip
16	107-3052-03	1	Seat Support Frame ASM
17	107-3058	1	Catch-Latch, Seat
18	322-3	2	Screw-HH
19	3296-29	2	Nut-Lock, NI
20	3296-39	1	Nut-Lock, NI
23	323-20	1	Screw-HH
24	107-0076	1	Spring-Torsion
25	107-0075	1	Bushing-Latch, Seat
26	62-9130	1	Grip-Handle
28	3256-24	1	Washer-Flat
29	107-3083	1	Latch ASM
34	103-4469	1	Seatbelt Kit
34:2	3212-4	2	Screw-HH
34:3	3296-38	2	Nut-Lock, NI
54		1	ROPS Bolt Bag

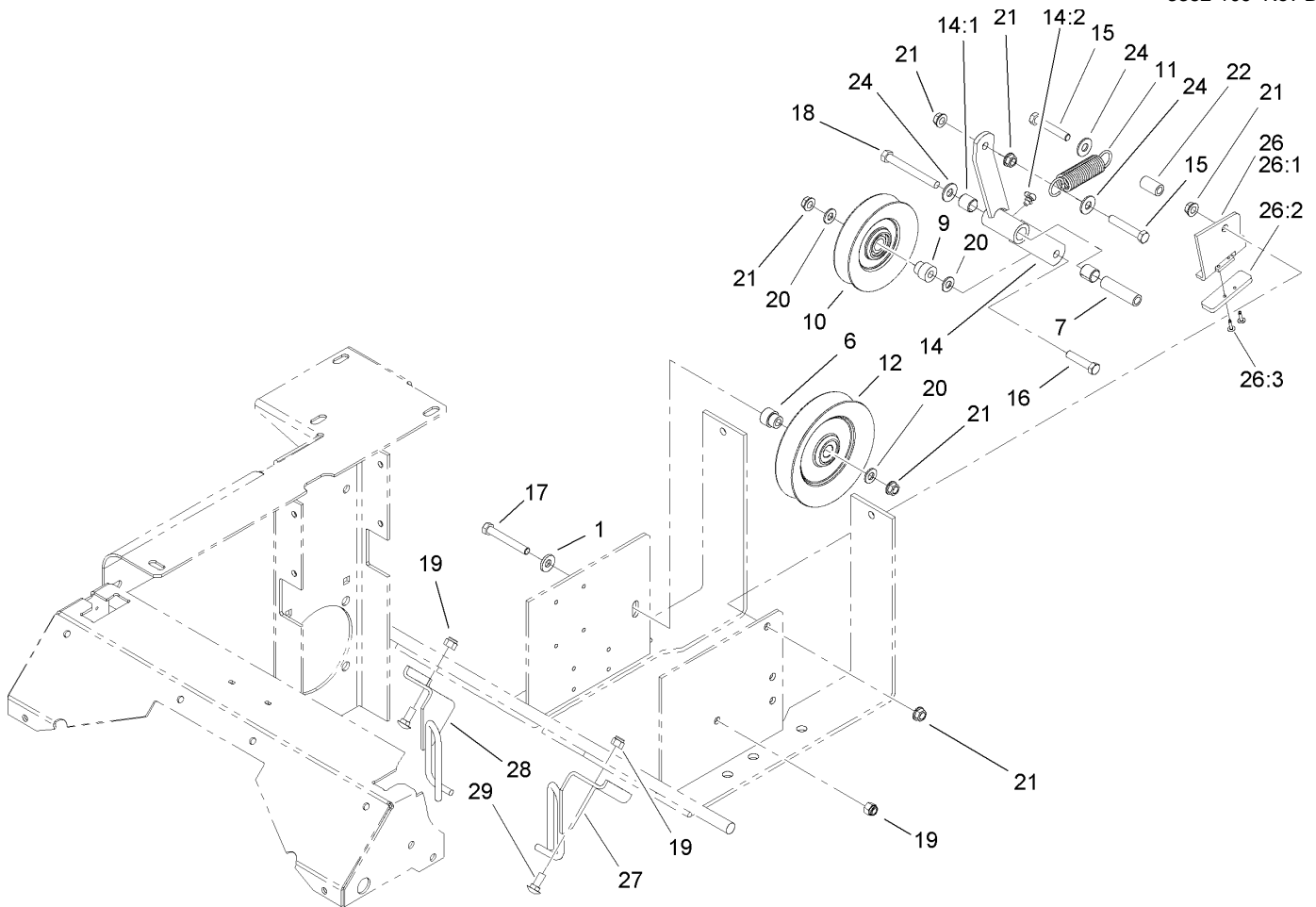
Ref	Part No.	Qty.	Description
54:3	323-6	8	Screw-HH
54:4	98-5975	8	Washer-Belleville
54:5	3290-357	8	Nut-HHF, Whiz



Deck Connection Assembly

Ref	Part No.	Qty.	Description
1	32128-37	16	Nut-HF
2	103-1898	8	Screw-HH
3	1-633447	4	Chain-Lift, Deck
4	302-19	4	Fitting-Grease
5	3217-11	2	Nut-Hex
6	3253-8	2	Washer-Lock
7	327-11	2	Screw-HH
8	1-633029	2	Balljoint-Spherical
9	3219-6	2	Nut-Hex
10	103-1072-01	2	Strut
11	1-632199-01	2	Pin-Strut
12	322-3	2	Screw-HH
13	3296-29	2	Nut-Lock, NI

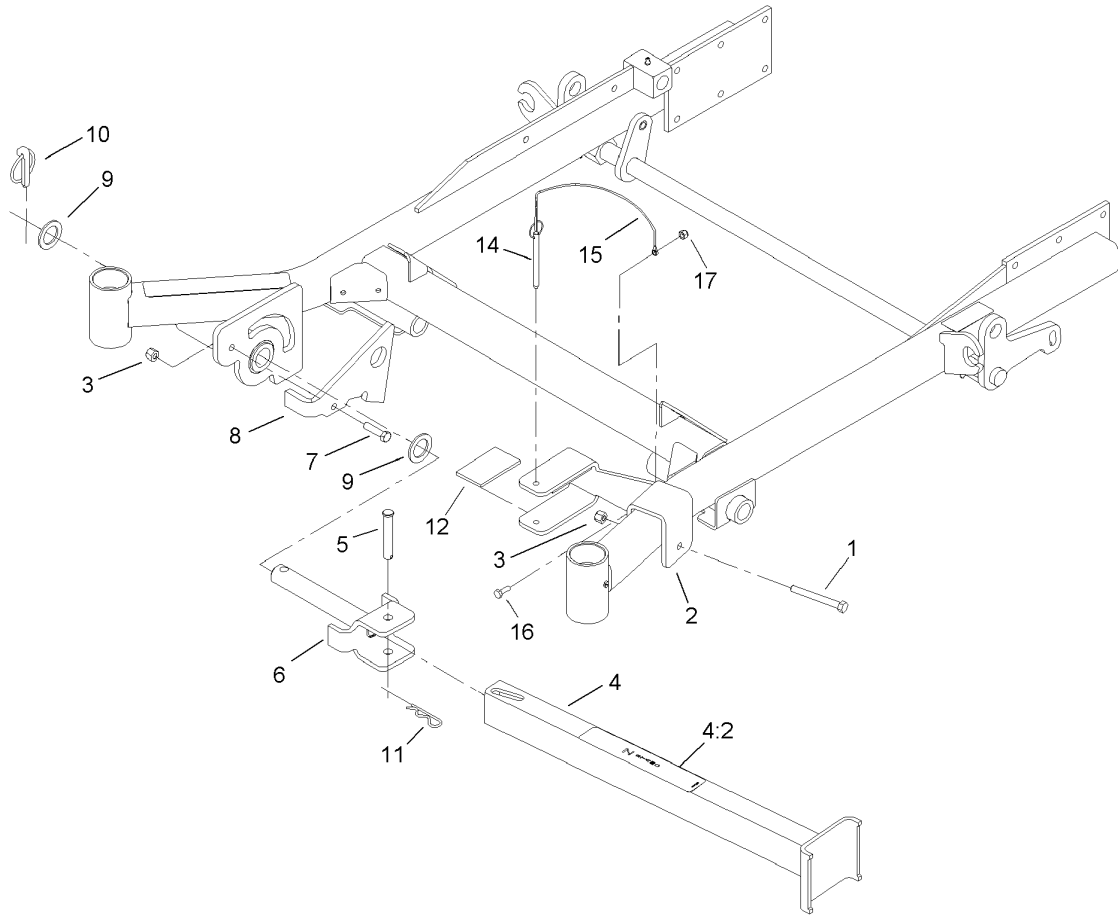
--	--	--	--



Drive Idler Assembly

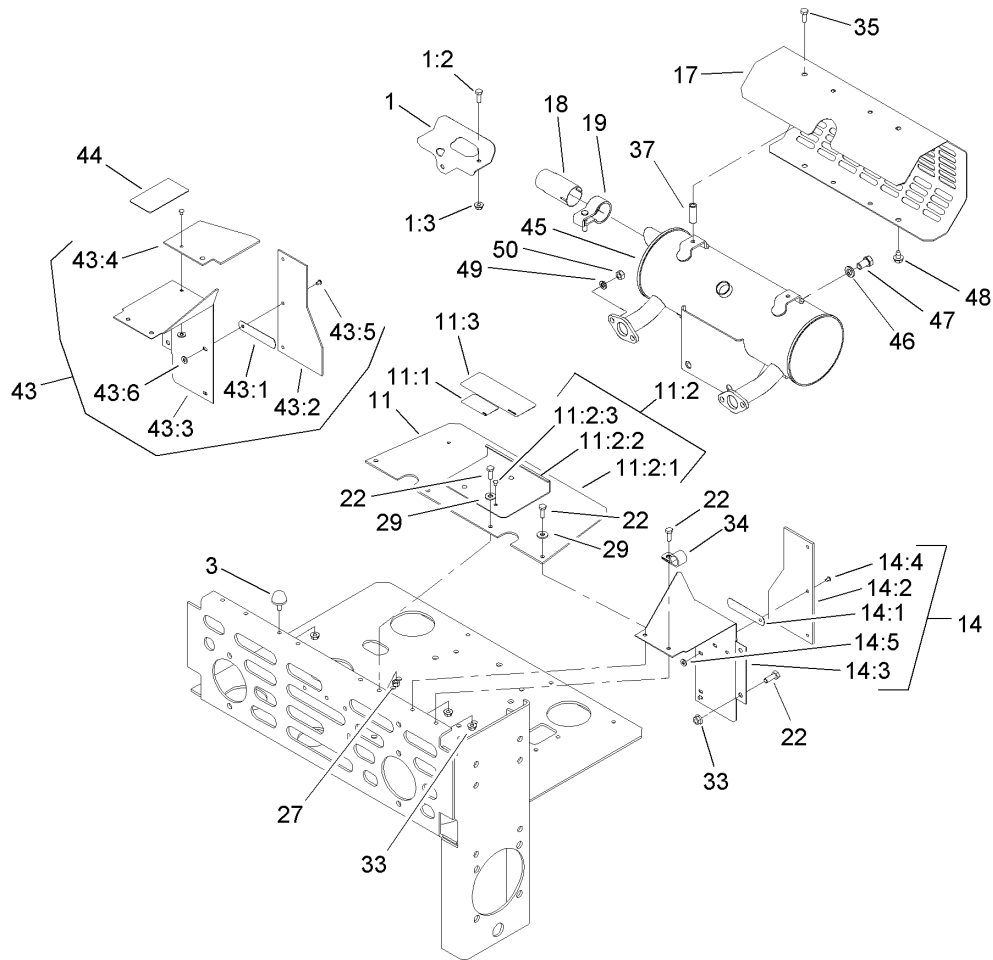
Ref	Part No.	Qty.	Description
1	98-5975	1	Washer-Belleville
6	103-2627	1	Bushing-Idler
7	1-603384	1	Bushing-Pivot, Idler
9	1-603496	1	Bushing-Idler
10	99-4638	1	Idler
11	1-603402	1	Spring-Extension
12	1-633166	1	Pulley-Idler
14	103-3147	1	Arm ASM
14:1	1-513034	2	Sleeve-Bearing
14:2	302-40	1	Fitting-Grease
15	323-12	2	Screw-HH
16	323-9	1	Screw-HH
17	323-13	1	Screw-HH
18	1-800805	1	Screw-HH
19	3296-39	3	Nut-Lock, NI
20	3256-24	3	Washer-Flat
21	3290-357	6	Nut-HHF, Whiz
22	1-603401	1	Spacer-Fender
24	3256-4	3	Washer-Flat
26	106-3271	1	Travel Limiter ASM
26:1	106-3228-03	1	Plate-Limiter, Pulley
26:2	106-3229	1	Pad-Bumper
26:3	3269-24	2	Rivet
27	108-7204	1	Guide-Belt, LH

Ref	Part No.	Qty.	Description
28	108-7229	1	Guide-Belt, RH
29	3231-2	2	Screw-CARR



Z-Stand Assembly

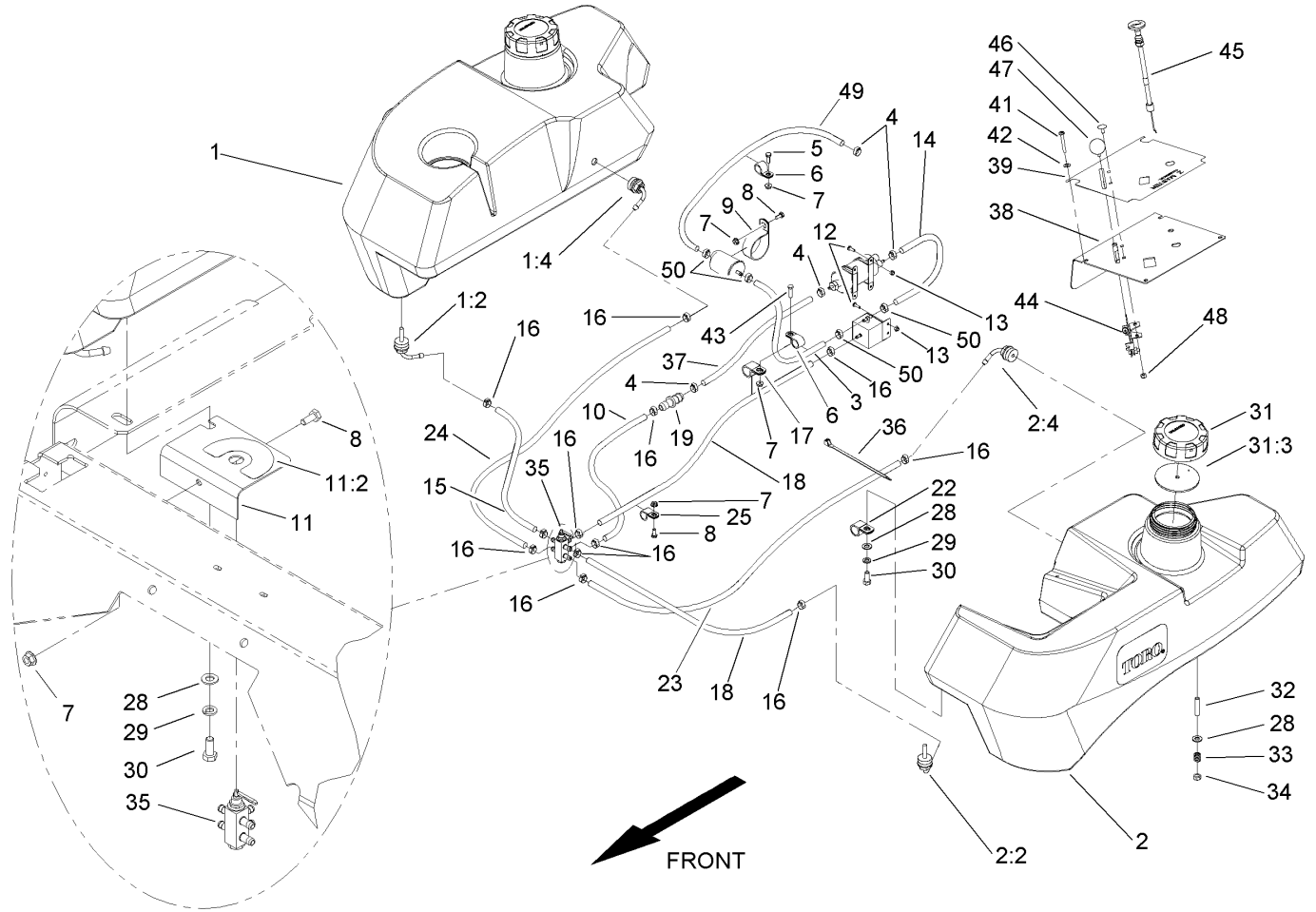
Ref	Part No.	Qty.	Description				
1	323-20	1	Screw-HH				
2	100-6542-01	1	Bracket-Cradle				
3	3296-39	2	Nut-Lock, NI				
4	107-1874	1	Leg ASM				
4:2	106-7464	1	Decal-Z Stand				
5	283-55	1	Pin-Clevis				
6	100-9692-01	1	Pivot Pin ASM				
7	323-8	1	Screw-HH				
8	100-9686-01	1	Bracket-Latch				
9	3-6781	2	Washer-Thrust				
10	283-71	1	Pin-Lynch				
11	3290-355	1	Pin-Hair				
12	100-6547	2	Cushion-Rubber				
14	105-1647	1	Pin-Hitch, Cotterless				
15	100-9385	1	Lanyard-Nylon				
16	321-4	1	Screw-HH				
17	3296-42	1	Nut-Lock, NI				



Muffler and Guard Assembly

Ref	Part No.	Qty.	Description
1	103-3535	1	Cable Heat Shield Kit
1:2	321-4	1	Screw-HH
1:3	32128-33	1	Nut-HF
3	1-523420	2	Bumper
11	1-644276	1	Shield ASM
11:1	1-633462	1	Decal-Important
11:2	1-634308	1	Shield/Lift ASM
11:2:1	103-1308	1	Shield-Engine
11:2:2	1-633300-03	1	Lift-Shield
11:2:3	1-803035	3	Rivet-Pop
11:3	103-5881	1	Decal-Devices, Rotating
14	1-634796	1	LH Shield ASM
14:1	1-523285	1	Clip-Baffle, Rear
14:2	1-633301	1	Shield-Engine
14:3	1-633795-03	1	Baffle-Engine Shield, LH
14:4	1-803035	3	Rivet-Pop
14:5	3256-63	3	Washer-Flat
17	1-643313-03	1	Guard-Muffler
18	103-1513	1	Arrester-Spark
19	103-1514	1	Clamp-Muffler
22	321-4	10	Screw-HH
27	3296-42	5	Nut-Lock, NI
29	3256-2	4	Washer-Flat
33	32128-33	9	Nut-HF

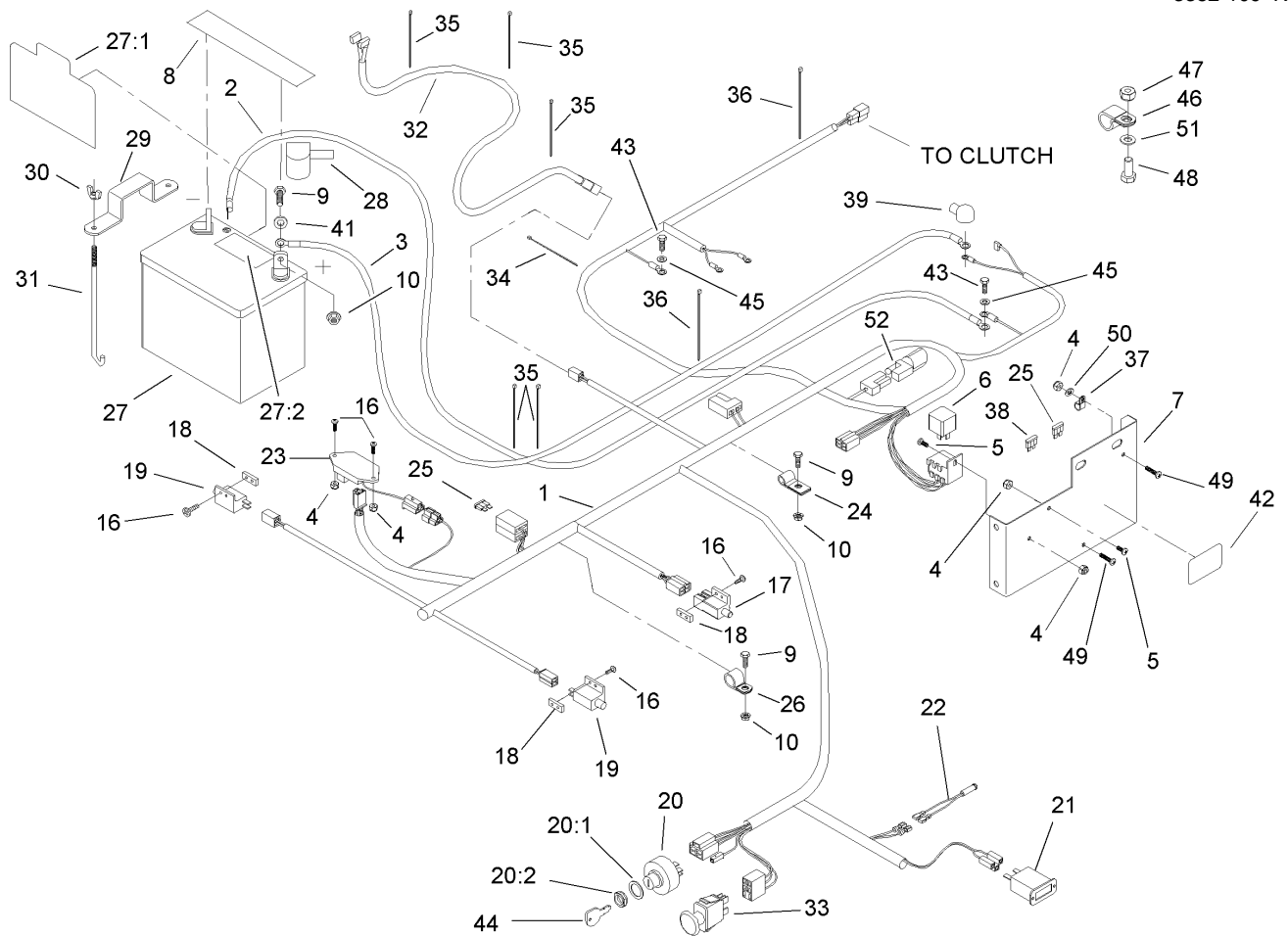
Ref	Part No.	Qty.	Description
34	1-633396	1	Clip-Loom
35	1-809108	2	Screw-HWH
37	1-323236	2	Spacer
43	1-644316	1	RH Shield ASM
43:1	1-523285	1	Clip-Baffle, Rear
43:2	1-633301	1	Shield-Engine
43:3	1-633794-03	1	Shield-RH
43:4	1-643315	1	Baffle-Cooler, Engine
43:5	1-803035	5	Rivet-Pop
43:6	3256-63	5	Washer-Flat
44	1-643339	1	Decal-Routing, Belt
45	103-7481	1	Muffler
46	3253-6	2	Washer-Lock
47	324-2	2	Screw-HH
48	9266934	2	Screw
49	1-805005	4	Washer-Lock
50	33014-00	4	Nut-Hex



Fuel Tank Assembly

Ref	Part No.	Qty.	Description
1	106-9977	1	RH Fuel Tank ASM
1:2	103-2605	1	Fitting-Fuel, Bulkhead
1:4	103-2615	1	Fitting-Fuel, Bulkhead
2	106-9978	1	LH Fuel Tank ASM
2:2	103-2605	1	Fitting-Fuel, Bulkhead
2:4	103-2615	1	Fitting-Fuel, Bulkhead
3	103-2491	1	Hose-Fuel
4	1-643277	4	Clamp-Hose, Fuel
5	321-4	1	Screw-HH
6	1-603727	2	Clip-Loom
7	32128-33	5	Nut-HF
8	321-3	4	Screw-HH
9	1-643241	1	Clip-Loom
10	99-7190	1	Hose-Fuel
11	107-2115	1	Fuel Valve Bracket ASM
11:2	107-2114	1	Decal-Valve, Fuel
12	3290-500	6	Screw-PPH
13	3296-2	6	Nut-Lock
14	103-2490	1	Hose-Fuel
15	103-2944	1	Hose-Fuel
16	1-643293	12	Clamp-Hose, Fuel
17	1-643312	1	Clip-Loom
18	63-7722	2	Hose-Fuel
19	103-2595	1	Connector

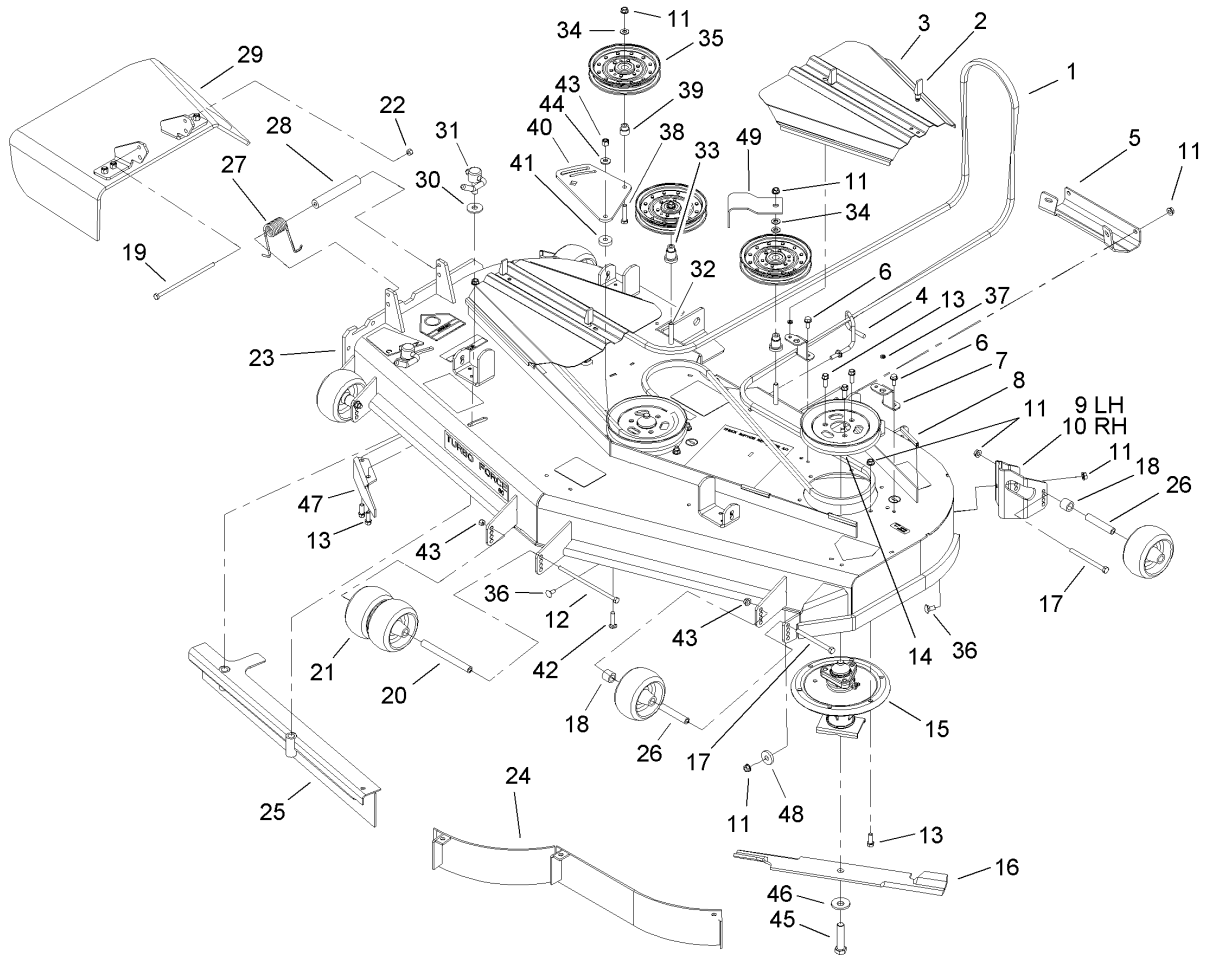
Ref	Part No.	Qty.	Description
22	103-0373	1	Clip
23	107-1889	1	Hose-Fuel
24	99-7191	1	Hose-Fuel
25	1-513762	3	Clip-Loom
28	3256-23	8	Washer-Flat
29	1-805005	2	Washer-Lock
30	322-3	2	Screw-HH
31	88-3980	2	Gas Cap ASM
31:3	88-4010	1	Gasket-Cap, Gas
32	1-633023	6	Stud
33	1-633349	6	Spring-Tank, Fuel
34	3296-47	6	Nut-Lock, NI
35	1-643234	1	Valve-Fuel, Dual Flow
36	1-303287	6	Tie-Plastic
37	93-5484	1	Hose-Fuel
38	107-8079-03	1	Panel-Control
39	106-9969	1	Decal-Panel, Control
41	1-803071	4	Screw
42	1-303435	4	Washer-Spring
43	321-6	1	Screw-HH
44	107-8073	1	Cable-Throttle
45	106-9962	1	Control-Choke, Push / Pull
46	1-807513	2	Bolt-CARR
47	1-513592	1	Knob-Ball



Electrical Assembly

Ref	Part No.	Qty.	Description
1	106-7495	1	Harness-Wire
2	1-633307	1	Wire-Ground
3	1-523279	1	Wire-Battery, Positive
4	3296-2	8	Nut-Lock
5	1-803071	4	Screw
6	1-643275	2	Relay
7	103-2549-03	1	Panel-Mount, Fuse
8	105-3646	1	Decal-Warning, Battery
9	321-4	6	Screw-HH
10	32128-33	6	Nut-HF
16	3290-500	6	Screw-PPH
17	1-633111	1	Switch
18	1-633181	3	Plate-Tapped
19	1-513051	2	Switch-Open, Normally
20	88-9830	1	Key Switch ASM
20:1	3254-5	1	Washer-Tooth
20:2	218-461	1	Nut-HH
21	1-513374	1	Meter-Hour
22	1-643267	1	Indicator-Led, Red
23	100-6186	1	Module-Delay, Seat
24	1-513762	2	Clip-Loom
25	1-816001	2	Fuse-Blade Type, 20 Amp
26	103-0373	1	Clip
27	105-1692	1	Battery

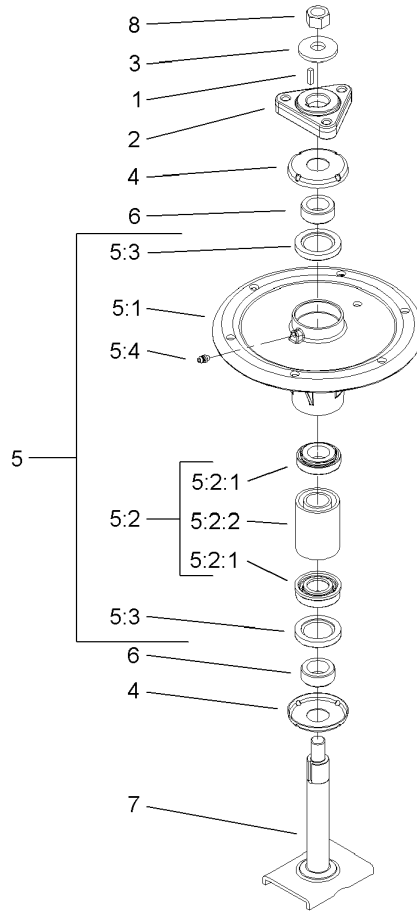
Ref	Part No.	Qty.	Description
27:1	104-4163	1	Decal-Battery
27:2	104-4164	1	Decal-Battery
28	1-543391	1	Insulator-Battery
29	1-633652-03	1	Strap-Holddown
30	1-543792	2	Wingnut
31	1-633651	2	Bolt-Holddown
32	103-1227	1	Harness-Wiring, Seat
33	1-633673	1	Switch-Delta
34	1-303287	2	Tie-Plastic
35	1-303335	5	Tie-Plastic
36	1-643115	2	Tie-Plastic
37	1-323229	1	Clip-Loom
38	1-816002	1	Fuse-Blade Type, 10 Amp
39	1-543393	1	Insulator-Solenoid
41	3256-2	2	Washer-Flat
42	103-2750	1	Decal-Relay / Fuse
43	33114-016	2	Screw-HH
44	63-8360	2	Key-Ignition
45	3256-23	2	Washer-Flat
46	1-643312	1	Clip-Loom
47	3296-42	1	Nut-Lock, NI
48	321-6	1	Screw-HH
49	32105-20	2	Screw-HH
50	3256-14	2	Washer-Flat



60in Deck Assembly

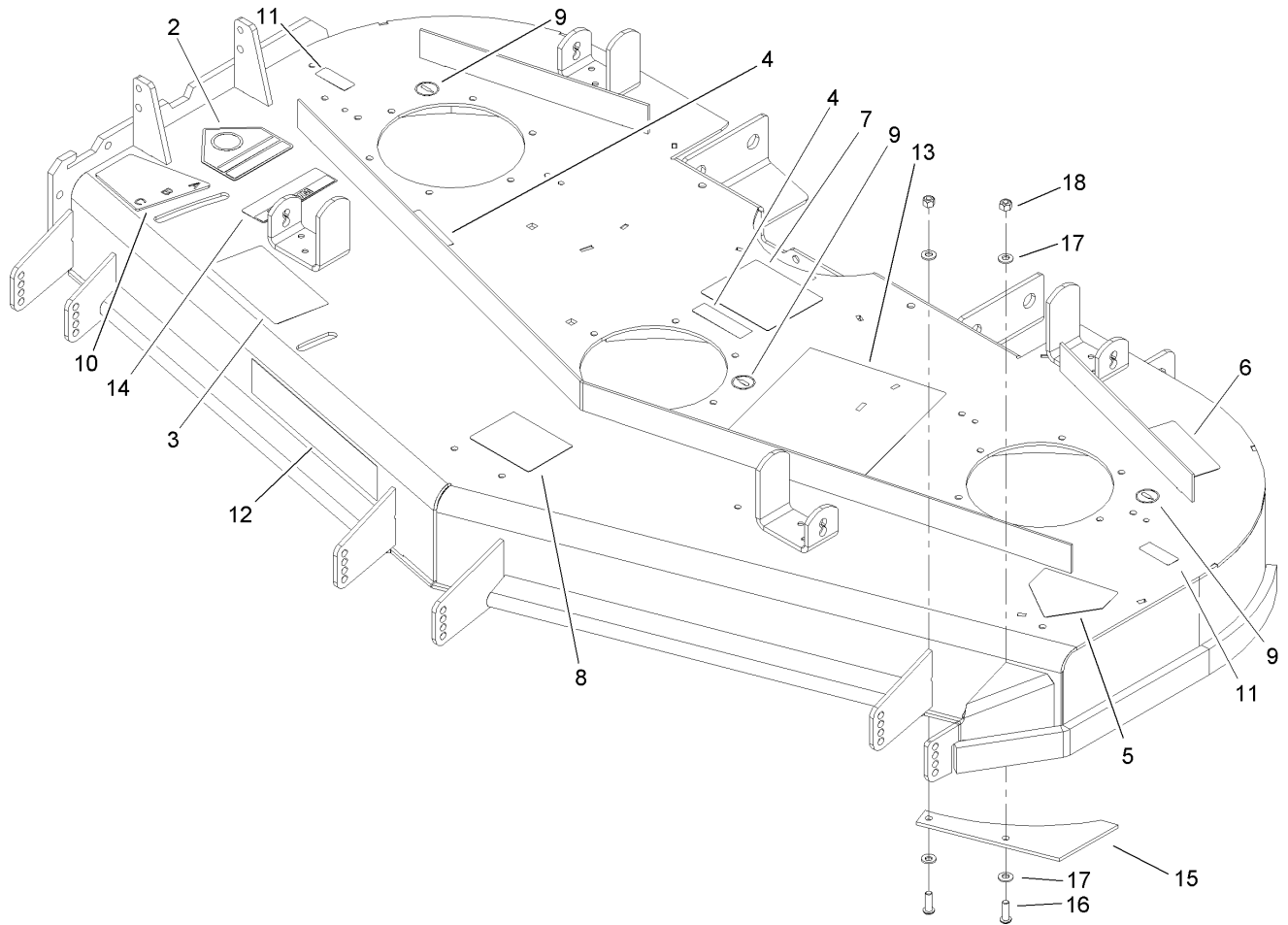
Ref	Part No.	Qty.	Description
1	105-8783	1	Belt
2	74-5950	4	Latch-Swell
3	105-8786-01	2	Cover-Belt
4	106-3220	1	Guide-Belt
5	105-8792-01	1	Plate-Skid
6	32144-70	4	Screw-HH
7	105-8787-01	4	Bracket-Cover
8	105-7699	8	Strip-Seal
9	106-7354-01	1	Plate-Roller, LH
10	106-7355-01	1	Plate-Roller, RH
11	3290-357	38	Nut-HHF, Whiz
12	323-28	1	Screw-HH
13	92-1624	33	Screw
14	105-7734	3	Pulley
15	106-3217	3	Spindle ASM
16	105-7718-03	3	Blade-Hi Flow
17	323-23	4	Screw-HH
18	98-7913	4	Tube-Spacer
19	322-50	1	Screw-HH
20	98-5967	1	Spacer-Wheel
21	1-603299	6	Roller-Scalp, Anti
22	3296-29	1	Nut-Lock, NI
23	107-1624	1	Deck ASM
24	105-7657-01	1	Baffle ASM

Ref	Part No.	Qty.	Description
25	105-7669-01	1	Baffle ASM
26	98-7912	4	Tube-Spinner
27	104-8554	1	Spring-Torsion
28	105-4622	1	Spacer
29	106-3249	1	Rubber Deflector ASM
30	105-7697	2	Washer-Plastic
31	106-3242	2	Lever ASM
32	323-12	2	Screw-HH
33	106-3214	2	Mount-Pulley
34	3256-24	4	Washer-Flat
35	1-633109	3	Idler-Flat
36	3231-1	10	Screw-CARR
37	99-3058	4	Washer
38	323-9	1	Screw-HH
39	1-603496	1	Bushing-Idler
40	105-7787-01	1	Plate-Idler
41	105-7788	2	Spacer
42	3231-4	2	Screw-CARR
43	3296-39	7	Nut-Lock, NI
44	98-5975	1	Washer-Belleveille
45	103-0862	3	Screw-Cap
46	103-0865	3	Washer-Blade Bolt, Heavy
47	106-3216-01	1	Baffle-Discharge
48	112843	1	Washer



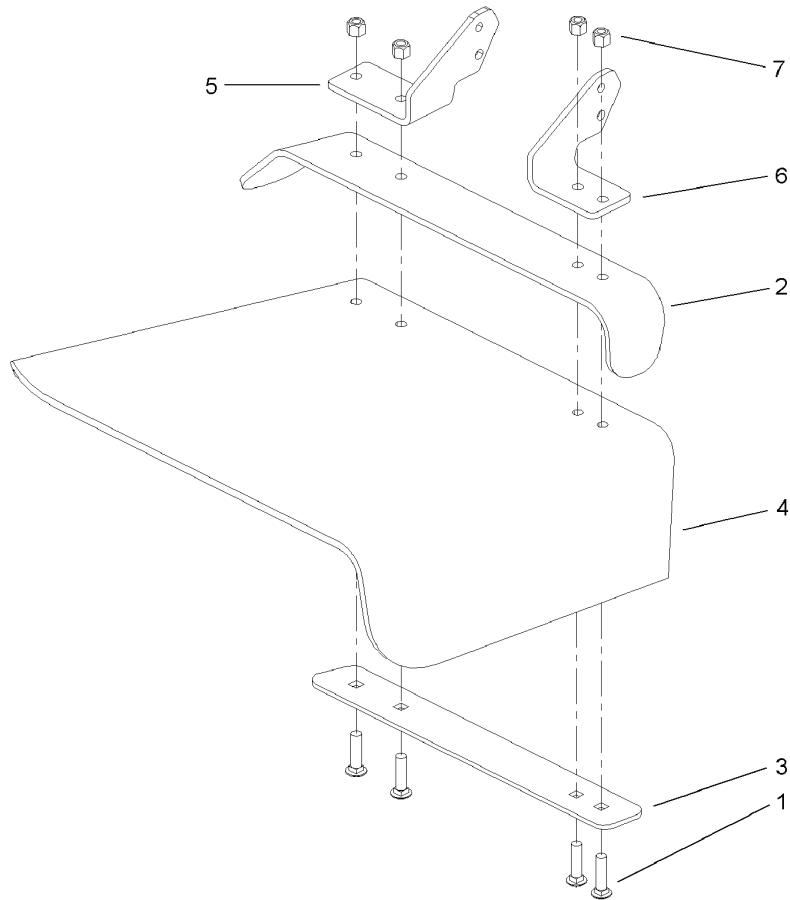
Spindle Assembly No. 106-3217

Ref	Part No.	Qty.	Description			
1	10-8040	1	Key-Square			
2	106-3277	1	Hub-Pulley			
3	103-0865	1	Washer-Blade Bolt, Heavy			
4	106-3204	2	Shield-Bearing			
5		1	Spindle Bearing ASM			
5:1	106-3211	1	Housing-Spindle			
5:2	106-3207	1	Bearing ASM			
5:2:1	27-0960	1	Bearing ASM			
5:2:2	106-3206	1	Spacer-Set, Matched			
5:3	253-133	2	Seal-Oil			
5:4	302-5	1	Fitting-Grease			
6	106-3218	2	Spacer-Seal			
7	106-3233	1	Spindle Shaft ASM			
8	3219-6	1	Nut-Hex			



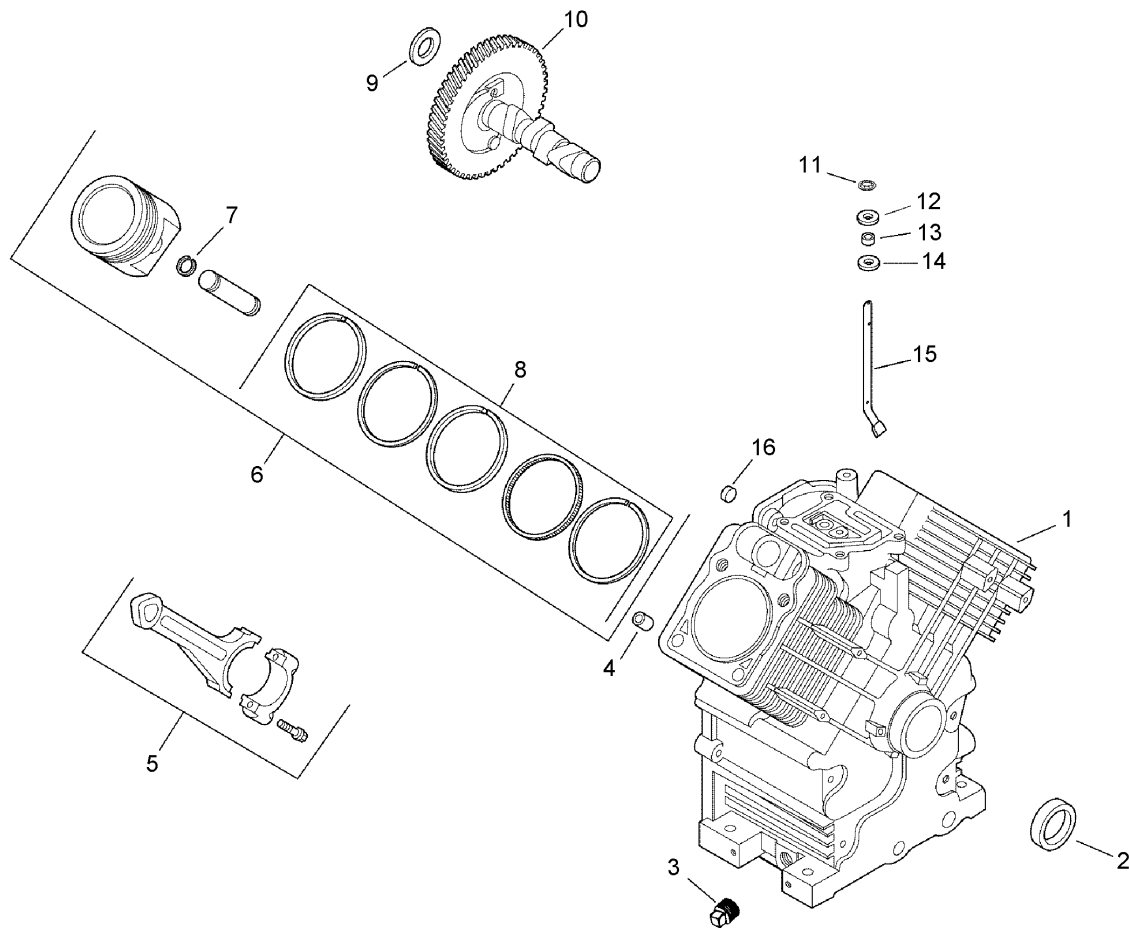
Deck Decal Assembly No. 107-1624

Ref	Part No.	Qty.	Description
2	54-9220	1	Decal-Danger
3	66-1340	1	Decal-Danger
4	98-5954	3	Decal-Missing, Cover
5	43-8480	1	Decal-Danger
6	68-8340	1	Decal-Torque
7	105-7797	1	Decal-Routing, Belt
8	105-7798	1	Decal-Scalp, Anti
9	58-6520	3	Decal-Grease
10	107-1622	1	Decal-Adjustment, Baffle
11	107-1613	2	Decal-Grease
12	107-1619	1	Decal
13	107-1621	1	Decal-Service, Check
14	104-8569	1	Decal-Warning
15	107-3137	1	Plate-Turbo
16	3274-104	2	Screw-HSBH
17	1-303334	4	Washer-Spring
18	3296-29	2	Nut-Lock, NI



Rubber Deflector Assembly No. 106-3249

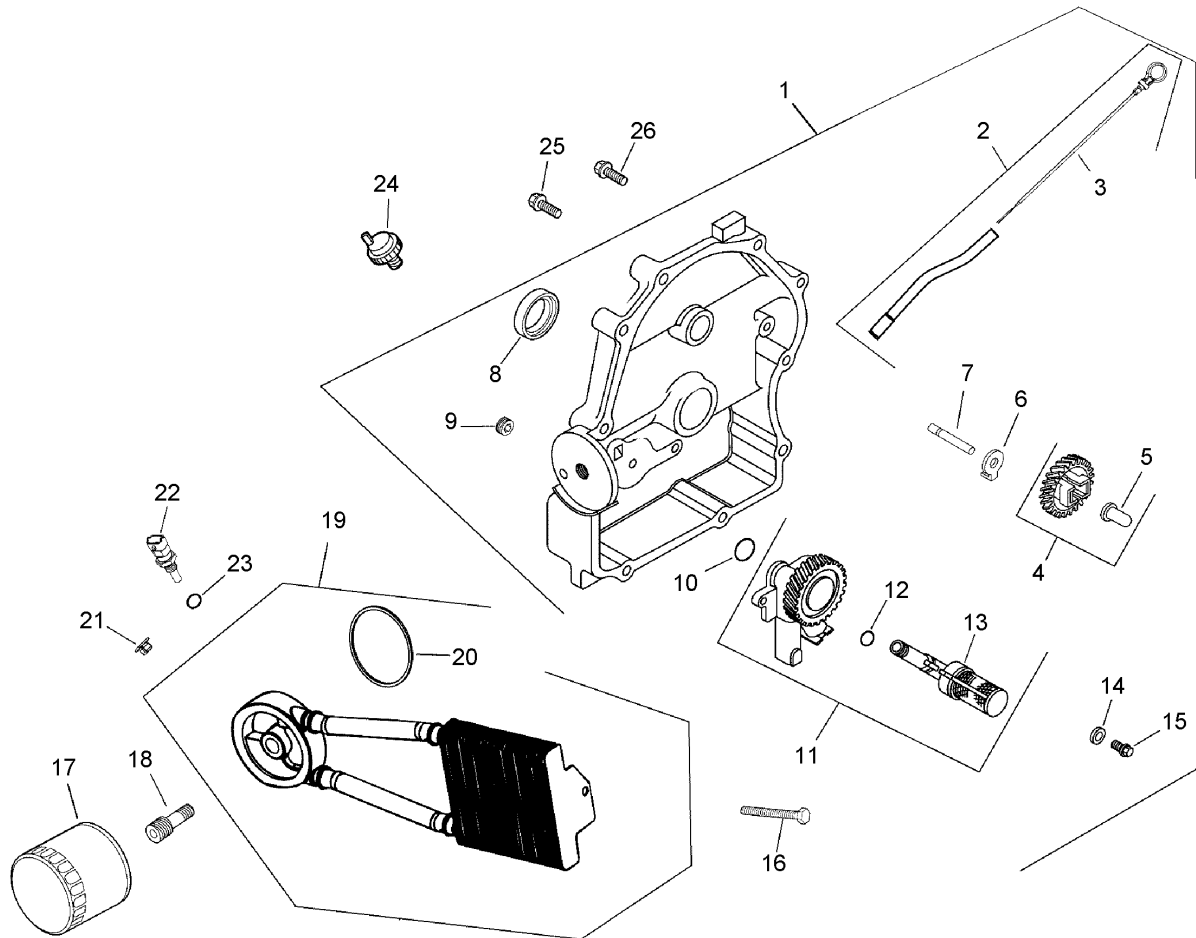
Ref	Part No.	Qty.	Description
1	3231-4	4	Screw-CARR
2	106-3246-01	1	Deflector
3	106-3248-03	1	Strap-Discharge
4	107-1617	1	Deflector-Rubber
5	106-3252-01	1	Plate-Hinge, Rear
6	106-3253-01	1	Plate-Hinge, Front
7	3296-39	4	Nut-Lock, NI



Crankcase Assembly Kohler CH745-0007

Ref	Part No.	Qty.	Description
2 1		1	Crankcase (Use: Miniblock 24 782 36)
2	24 032 01-S	1	Seal-Oil, Front
3	25 139 57-S	2	Plug-SQH (3/8In NPTF)
4	24 380 13-S	6	Pin-Locating
5	24 067 13-S	2	Rod-Connecting (STD)
5	24 067 14-S	2	Rod-Connecting (.25)
6	24 874 08-S	2	Piston W/Ring Set (STD.) (Includes 7,8)
6	24 874 16-S	2	Piston W/Ring Set (.08)
6	24 874 20-S	2	Piston W/Ring Set (.25)
6	24 874 21-S	2	Piston W/Ring Set (.50)
7	24 018 01-S	4	Retainer-Pin, Piston
8	24 108 05-S	2	Ring Set (.25)
8	24 108 06-S	2	Ring Set (.25)
8	24 108 07-S	2	Ring Set (.50)
9	12 422 10-S	1	Shim-Camshaft, Yellow
9	12 422 09-S	1	Shim-Camshaft, Red
9	12 422 13-S	1	Shim-Camshaft, Black
9	12 422 07-S	1	Shim-Camshaft, White
9	12 422 08-S	1	Shim-Camshaft, Blue
9	12 422 11-S	1	Shim-Camshaft, Green
9	12 422 12-S	1	Shim-Camshaft, Gray
10	24 012 18-S	1	Camshaft

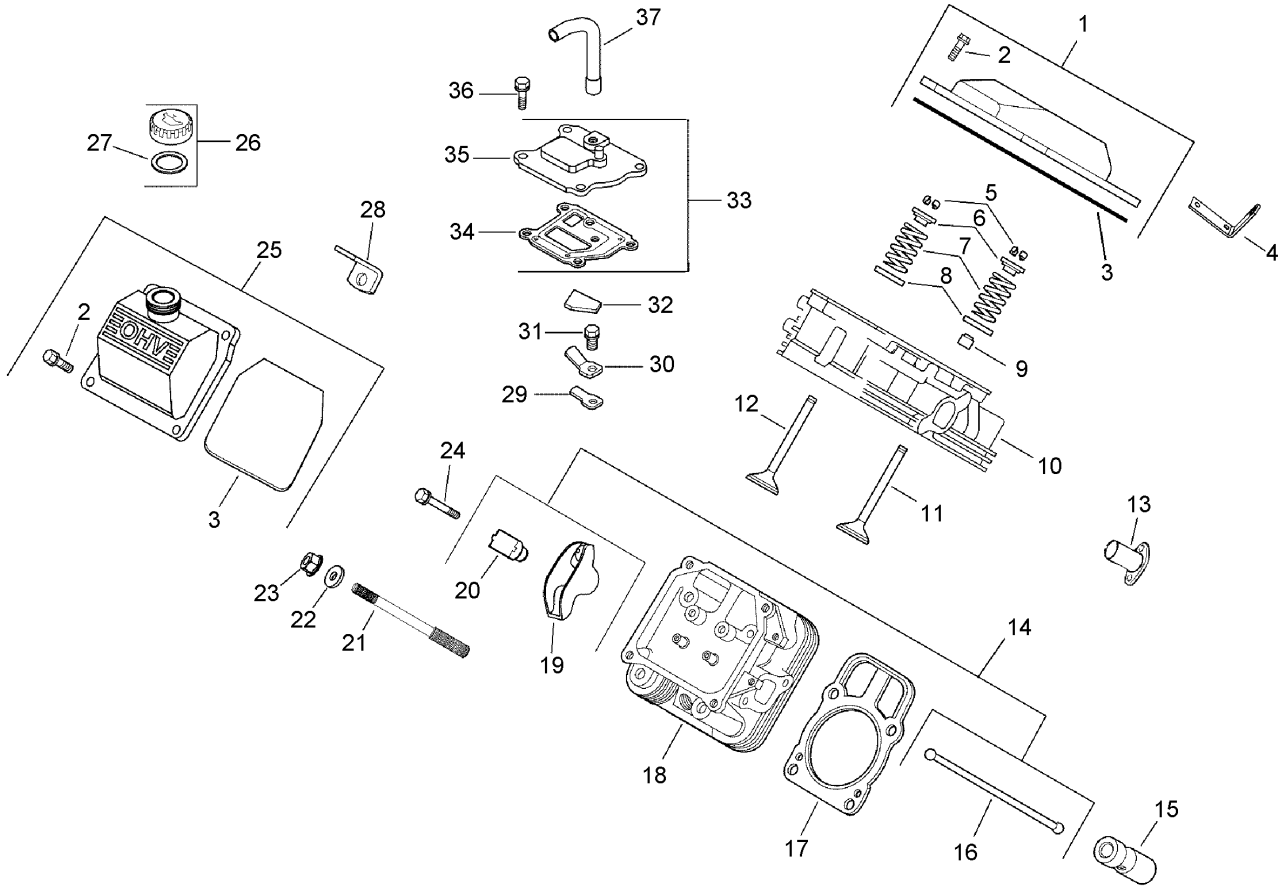
Ref	Part No.	Qty.	Description
11	24 018 09-S	1	Retainer-Ring
12	M-931010-S	1	Washer-Plain (Top)
13	28 032 09-S	1	Seal-Cross Shaft, Governor
14	24 468 15-S	1	Washer-Flat (Bottom)
15	24 144 38-S	1	Shaft-Cross, Governor
16	52 139 09-S	1	Plug-Cup



Oil Pan and Lubrication Assembly Kohler CH745-0007

Ref	Part No.	Qty.	Description
❶	24 009 83-S	1	Closure Plate Kit (Includes 2-15)
❷	24 755 121-S	1	Dipstick Tube ASM (Includes 3)
❸	24 038 10-S	1	Dipstick
❹	24 043 12-S	1	Governor Gear Kit (Includes 5)
❺	12 380 01-S	1	Pin-Regulating, Governor
❻	24 448 02-S	1	Tab-Locking
❼	12 144 02-S	1	Shaft-Gear, Governor
❽	52 032 08-S	1	Seal-Oil (PTO End)
❾	25 139 60-S	1	Plug-Pipe, 1/8In Allen Head
❿	24 153 08-S	1	O-Ring
⓫	24 393 37-S	1	Oil Pump ASM (Includes 12, 13)
⓬	24 153 01-S	1	O-Ring (Oil Pick Up)
⓭	24 381 04-S	1	Pick Up-Oil
⓮	M-631005-S	2	Washer-Plain (6Mm)
⓯	M-645025-S	2	Screw-HF (M6X1.0X25)
⓰	25 086 49-S	2	Screw-Tapping, 1/4-1X3/4
⓱	12 050 01-S	1	Filter-Oil
⓲	24 136 05-S	1	Nipple-Filter, Oil
⓳	24 594 31-S	1	Cooler-Oil (Includes 20)
⓴	24 153 21-S	1	O-Ring
⓵	24 100 01-S	2	Nut-Plastic
⓶	24 418 12-S	1	Sensor-Temperature
⓷	12 153 04-S	1	O Ring-Oil Pick-Up
⓸	24 099 03-S	1	Switch-Pressure

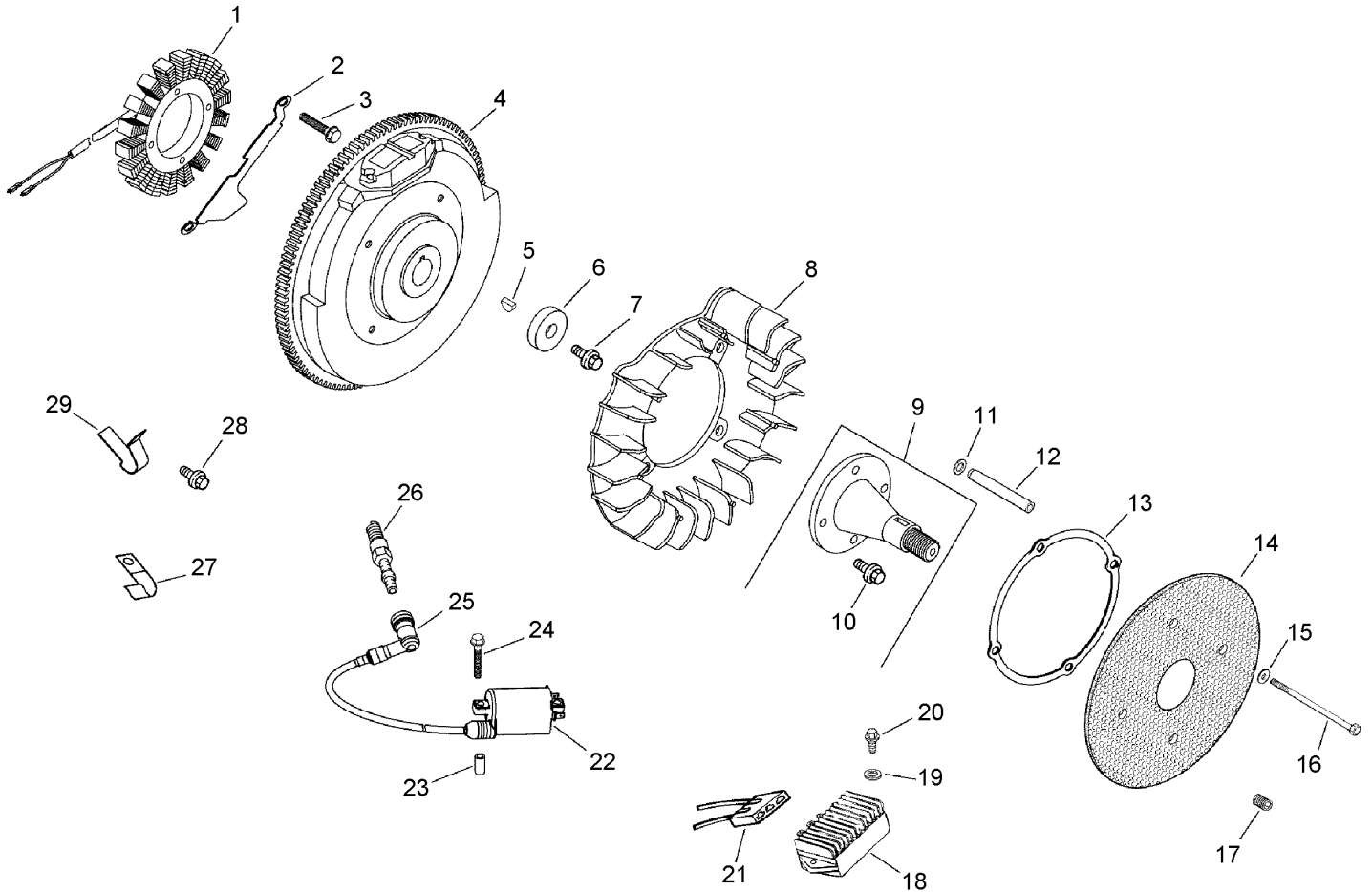
Ref	Part No.	Qty.	Description
❷❺	24 086 16-S	9	Screw-HF (M8X1.25X45)
❷❻	24 086 17-S	1	Screw-HF (M8X1.25X45)
❶❶	24 113 25-S	1	Decal-Cooler, Oil



Head, Valve and Breather Assembly Kohler CH745-0007

Ref	Part No.	Qty.	Description
❶	24 755 74-S	1	Plain Valve Cover Kit (Includes 2,3)
❷	M-651030-S	4	Screw-HF (M6X1.0X30)
❸	24 153 28-S	1	O-Ring
❹	24 445 01-S	1	Strap-Lifting
❺	12 755 03-S	4	Retainer Kit
❻	12 173 01-S	2	Cap-Spring, Valve
❼	24 089 02-S	2	Spring-Valve
❽	235011-S	2	Retainer-Spring
❾	66 032 05-S	1	Seal-Stem, Valve
❿	24 318 65-S	1	Head ASM
⓫	24 017 01-S	1	Valve-Intake (STD)
⓫	24 017 02-S	1	Valve-Intake (.25)
⓬	24 016 01-S	2	Valve-Exhaust (STD)
⓬	24 016 02-S	1	Valve-Exhaust (.25)
⓭	24 605 01-S	1	Liner-Port, Exhaust
⓮	24 755 66-S	1	Valve Train Kit (Includes 16, 19, 20)
⓯	25 351 01-S	4	Lifter-Valve
⓰	24 411 05-S	2	Rod-Push
⓱	24 841 03-S	2	Cylinder Head Gasket Kit (Includes 22, 23)
⓲	24 318 66-S	1	Head ASM
⓳	25 186 01-S	2	Arm-Rocker
⓴	24 599 01-S	2	Pivot-Arm, Rocker

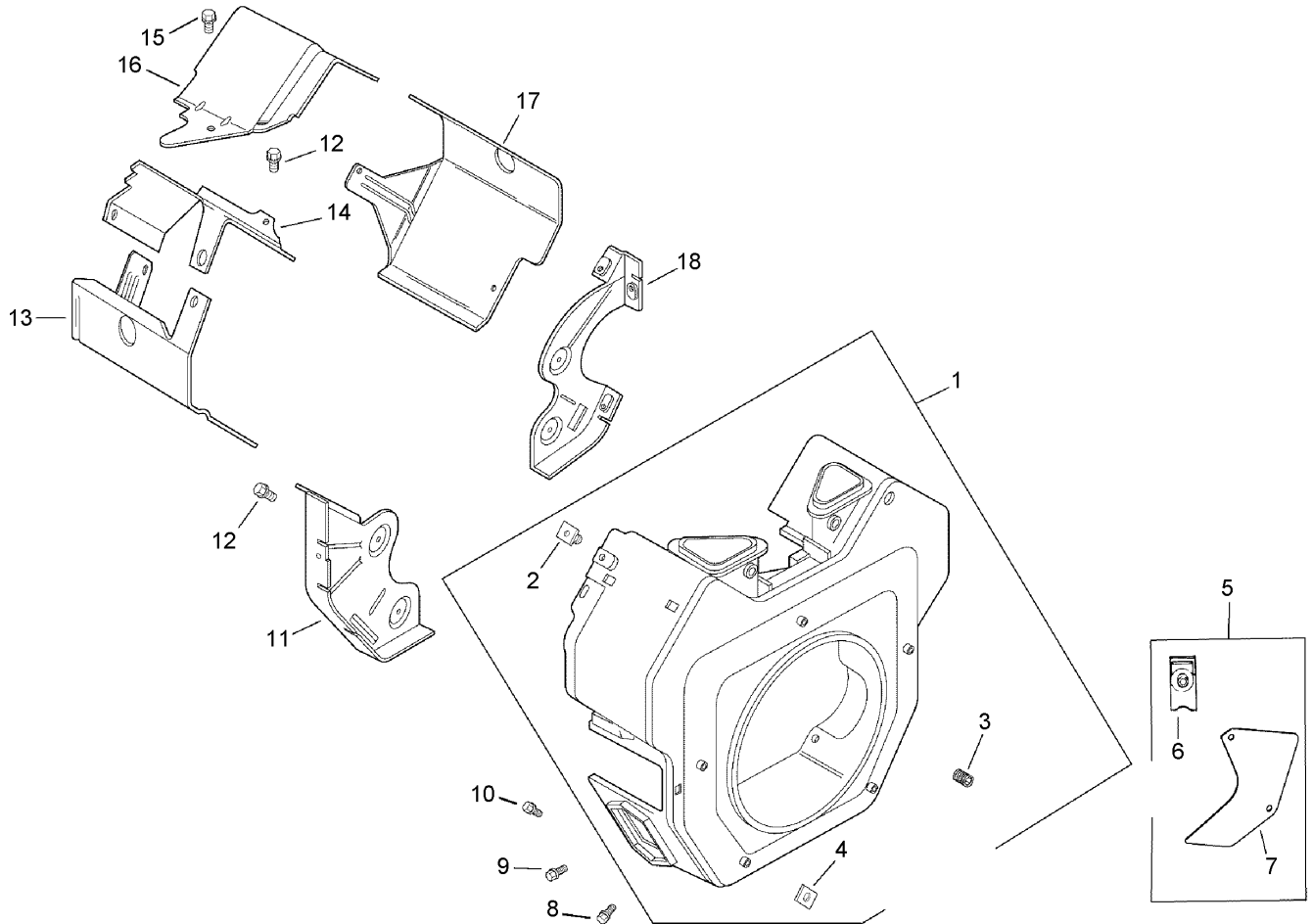
Ref	Part No.	Qty.	Description
⓴	24 072 09-S	8	Stud-Head, Cylinder
⓵	24 468 16-S	8	Washer
⓶	24 100 10-S	8	Nut-HF (M8X1.25)
⓷	66 086 07-S	2	Screw
⓸	24 755 140-S	1	Oil Fill Valve Cover Kit (Includes 2, 3)
⓹	24 755 46-S	1	Oil Fill Cap Kit (Includes 27)
⓺	25 153 02-S	1	O-Ring
⓻	12 445 05-S	1	Strap-Lifting
⓼	24 402 03-S	1	Reed-Breather
⓽	66 018 04-S	1	Retainer-Reed, Breather
⓾	M-545010-S	1	Screw-HF (M5X0.8X10)
⓿	24 050 01-S	1	Filter-Breather
⓿	24 033 01-S	1	Breather Kit (Includes 34, 35)
⓿	24 041 51-S	1	Gasket-Breather
⓿	24 096 86-S	1	Cover-Breather
⓿	M-645020-S	4	Screw-HF (M6X1.0X20)
⓿	24 326 68-S	1	Hose-Breather
⓿	25 452 01-S	1	Terminal
⓿	24 755 147-S	1	Cylinder Head Hardware Kit (Includes 5-9, 11, 12, 16, 19, 20, 24)



Ignition and Electrical Assembly Kohler CH745-0007

Ref	Part No.	Qty.	Description
❶	28 085 02-S	1	Stator Kit (Includes 3, 21)
❷	24 126 139-S	1	Bracket-Wire, Stator
❸	25 086 29-S	2	Screw-Tapping
❹	24 025 09-S	1	Flywheel
❺	X-42-15-S	1	Key
❻	12 468 03-S	1	Washer-Plain (3/8In)
❼	12 086 14-S	1	Screw-HF (M10X1.5X46)
❽	24 157 04-S	1	Fan
❾	24 755 08-S	1	Front Drive Shaft Kit (Includes 10)
❿	M-839025-S	4	Screw-HF (M8X1.25X25)
⓫	24 468 11-S	4	Washer-Spring
⓬	24 112 14-S	4	Spacer
⓭	24 141 06-S	1	Ring-Support
⓮	24 162 22-S	1	Screen-Grass
⓯	X-25-53-S	4	Washer-Plain, 1/4In
⓰	M-603100-S	4	Screw-HH (M6X1.0X100)
⓱	25 086 43-S	1	Screw-Set
⓲	25 403 08-S	1	Rectifier-Regulator
⓳	X-25-92-S	2	Washer-Plain
⓴	24 086 18-S	1	Screw-Head, Phillips
⓵	236602-S	1	Connector
⓶	24 519 02-S	2	Coil-Ignition
⓷	24 112 16-S	4	Spacer
⓸	24 086 48-S	4	Screw-Tapping

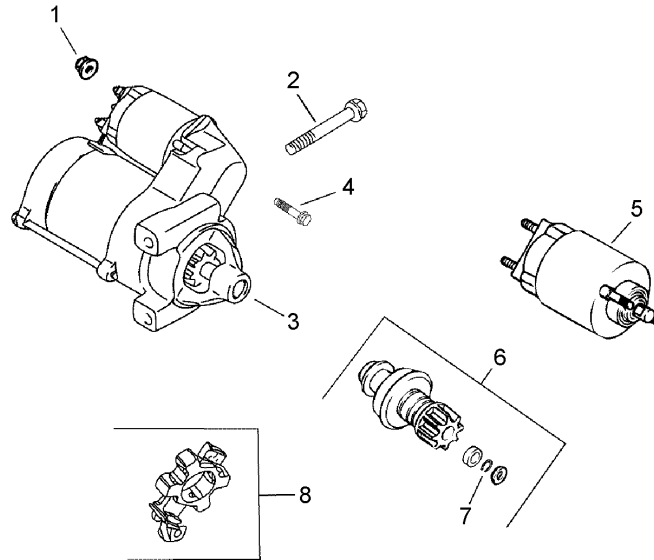
Ref	Part No.	Qty.	Description
⓶	24 131 02-S	1	Spark Plug Boot ASM
⓷	25 132 12-S	2	Spark Plug
⓸	48 154 02-S	1	Clip-Cable
⓹	M-545016-S	1	Screw-HF (M5X0.8X16)
⓺	25 237 06-S	1	Clamp-Hose
⓻	24 755 144-S	1	Full Wave Conversion Kit (Includes 18, 21 And 24 518 12-S)
⓼	24 100 01-S	4	Nut-Plastic
⓽	24 126 137-S	1	Bracket-Strap, Ground
⓾	25 468 07-S	1	Washer
⓿	25 452 01-S	3	Terminal
⓿	24 518 12-S	1	Lead-Black (6In - 18 Gauge - Insulated Grip Barrel Eyelet Terminals)
⓿	X-22-11-S	1	Washer-Lock (1/4In)
⓿	12 454 03-S	1	Tie-Wire



Blower Housing and Baffle Assembly Kohler CH745-0007

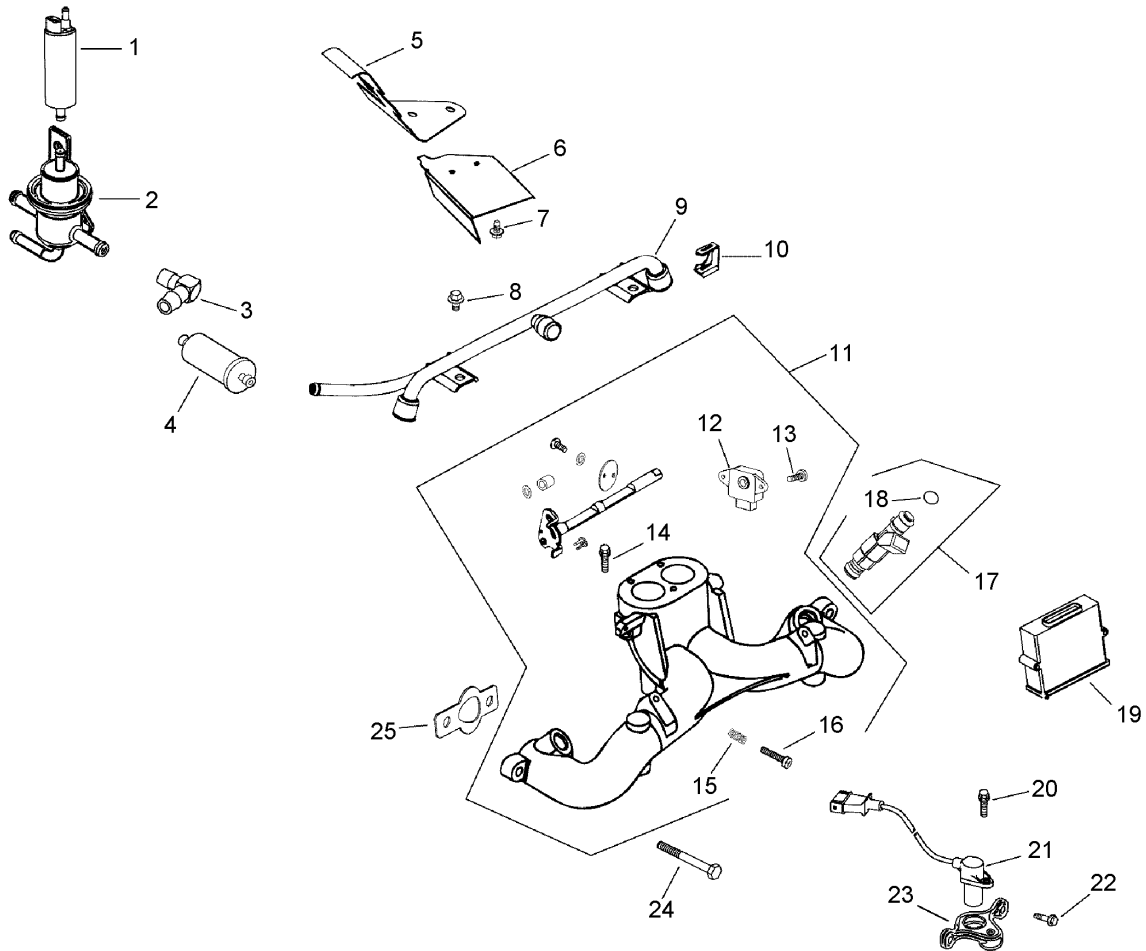
Ref	Part No.	Qty.	Description
❶	24 027 167-S	1	Blower Housing ASM (Includes 2-5)
❷	24 100 02-S	1	Nut-Plastic
❸	25 086 43-S	1	Screw-Set
❹	24 100 01-S	4	Nut-Plastic
❺	25 154 02-S	4	Clip
❻	25 755 20-S	1	Access Cover Kit (Includes 6, 7)
❼	24 096 63-S	2	Panel-Access
❽	M-551016-S	1	Screw-HF (M5X0.8X16)
❾	M-545016-S	1	Screw-HF (M5X0.8X16)
❿	M-545020-S	4	Screw-HF (M5X0.8X20)
⓫	24 146 19-S	1	Plate-Backing (No. 2 Side)
⓬	M-645016-S	10	Screw-HF (M6X1.0X16)
⓭	24 063 39-S	1	Baffle-Barrel, Cylinder (No. 2 Side)
⓮	24 063 17-S	1	Baffle-Valley (No. 2 Side)
⓯	M-545010-S	2	Screw-HF (M5X0.8X10)
⓰	24 063 59-S	1	Baffle-Valley (No. 1 Side)
⓱	24 063 58-S	1	Baffle-Barrel, Cylinder (No. 1 Side)
⓲	24 146 20-S	1	Plate-Backing (No. 1 Side)
⓳	X-22-11-S*	1	Washer-Lock, 1/4In (Used With M-561016-S Screw To Ground Ignition Coil Lead)
⓴	M-561016-S*	1	Screw-Forming, Thread (M5X0.8X16)

Ref	Part No.	Qty.	Description
⓴	24 113 133-S	1	Decal-26Hp
⓴	25 113 39-S	1	Decal-Lamination, Clear



Starting System Assembly Kohler CH745-0007

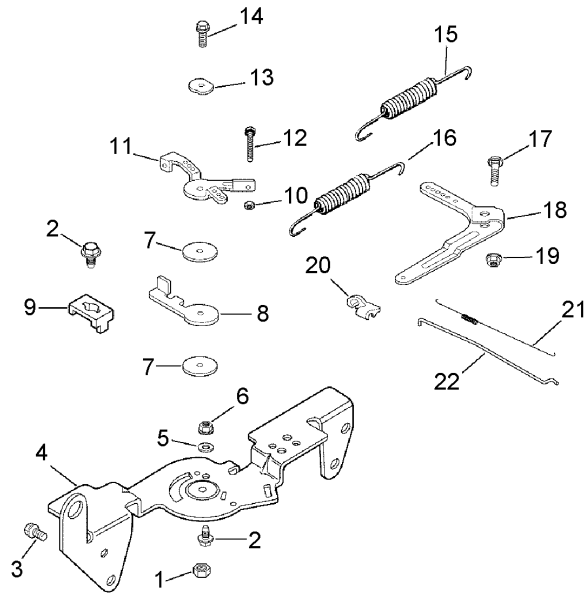
Ref	Part No.	Qty.	Description
❶	M-841080-S	1	Nut-HF (M8X1.25)
❷	M-851080-S	2	Screw-HF (M8X1.25X80)
❸	25 098 09-S	1	Starter ASM (Includes 4-8) Note: Service Starter And Components According To Starter Brand And Number.
❹	25 086 113-S	3	Screw-Torx Head, External
❺	25 435 05-S	1	Solenoid Kit (Includes 4)
❻	25 755 33-S	1	Pinion Drive Kit (Includes 7)
❼	25 141 05-S	1	Ring
❽	25 221 01-S	1	Brush Kit



Fuel System Assembly Kohler CH745-0007

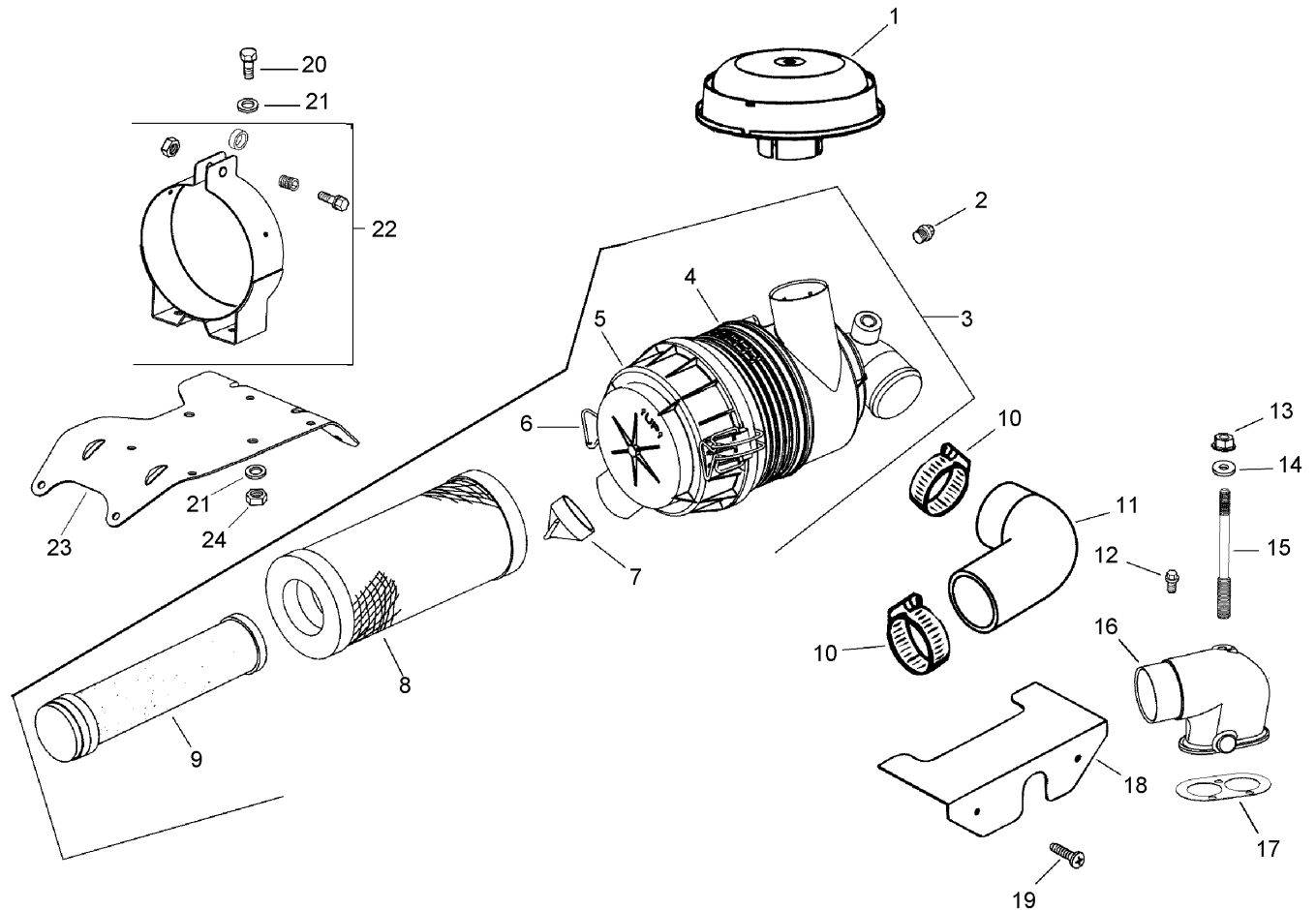
Ref	Part No.	Qty.	Description
❶	24 393 20-S	1	Fuel Pump ASM (Includes 24 050 06-S)
❷	24 403 17-S	1	Fuel Pressure Regulator ASM
❸	25 155 38-S	1	Connector-Hose
❹	24 050 03-S	1	Filter-Fuel
❺	24 063 37-S	1	Baffle-Valley
❻	24 265 08-S	1	Deflector-Air
❼	M-545010-S	2	Screw-HF (M5X0.8X10)
❽	M-639010-S	1	Screw-HF
❾	24 399 04-S	1	Rail-Fuel
❿	24 154 05-S	2	Clip-Injector, Fuel
⓫	24 164 84-S	1	Intake Manifold ASM (Includes 18-22 And 25 454 03-S)
⓬	24 418 06-S	1	Sensor-Position,Throttle
⓭	M-442012-S	2	Screw-Head, Pan
⓮	24 086 49-S	1	Screw-Set
⓯	12 089 11-S	1	Spring-Control, Speed
⓰	M-442025-S	1	Screw-HH
⓱	24 331 02-S	2	Injector-Fuel (Includes 24)
⓲	24 153 26-S	2	O Ring-Injector, Fuel
⓳	24 584 29-S	1	Control Unit-Electronic (Ecu)
⓴	24 086 42-S	1	Screw-HF
⓵	24 418 03-S	1	Sensor-Speed, Engine
⓶	M-545016-S	1	Screw-HF (M5X0.8X16)

Ref	Part No.	Qty.	Description
⓷	24 126 69-S	1	Bracket-Sensor,Speed
⓸	M-639025-S	4	Screw-HF
⓹	24 041 01-S	2	Gasket-Manifold, Intake
⓺	M-561016-S	1	Screw
⓻	X-25-79-S	1	Washer-Plain
⓼	24 050 06-S	1	Filter-Strainer, Fuel
⓽	X-22-9-S	1	Washer-Lock
⓾	24 176 122-S	1	Harness-Wiring (Includes 24 404 02-S)
⓿	25 454 04-S	1	Tie-Wire
⓿	24 113 78-S	1	Decal-Warning, Fuel



Engine Control Assembly Kohler CH745-0007

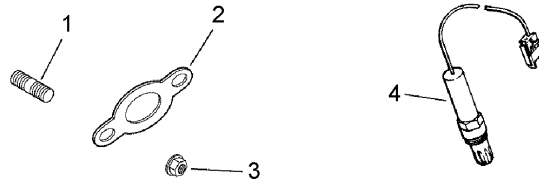
Ref	Part No.	Qty.	Description
❶	M-547050-S	1	Nut-Lock, Hex (M5X0.8)
❷	M-545016-S	3	Screw-HF (M5X0.8X16)
❸	M-645016-S	4	Screw-HF (M6X1.0X16)
❹	24 126 56-S	1	Bracket-Control
❺	X-20-1-S	1	Washer-Lock (1/4In)
❻	M-541050-S	1	Nut-HF (M5X0.8)
❼	24 468 01-S	3	Washer-Plain
❽	24 090 07-S	1	Lever-Actuator, Throttle
❾	12 237 01-S	1	Clamp-Cable
❿	M-446030-S	1	Nut-HF (M4X0.7)
⓫	24 090 03-S	1	Lever-Control, Throttle
⓬	M-401030-S	1	Screw (M4X0.7X30)
⓭	41 468 03-S	1	Washer
⓮	M-545020-S	1	Screw-HF (M5X0.8X20)
⓯	24 089 51-S	1	Spring-Limiter, Throttle
⓰	24 089 48-S	1	Spring-Governor
⓱	24 211 03-S	1	Bolt-Square Neck, Round Head
⓲	24 090 33-S	1	Lever-Governor
⓳	M-641060-S	1	Nut-HF
⓴	25 158 11-S	1	Bushing-Linkage
⓵	24 089 32-S	1	Spring-Linkage
⓶	24 079 13-S	1	Linkage-Throttle



Air Intake and Filtration Assembly Kohler CH745-0007

Ref	Part No.	Qty.	Description
❶	25 324 02-S	1	Hood-Cleaner, Air
❷	25 139 20-S	1	Plug-Pipe
❸	25 048 07-S	1	Heavy Duty Air Cleaner ASM (Includes 4-9)
❹	25 081 01-S	1	Housing-Air Cleaner, Heavy Duty
❺	25 096 06-S	1	Cover ASM (Includes 6, 7)
❻	25 154 05-S	2	Clip
❼	24 462 07-S	1	Valve-Ejector, Dust
❽	25 083 01-S	1	Element-Air, Primary
❾	25 083 04-S	1	Element-Air, Safety
❿	25 237 07-S	2	Clamp-Hose
⓫	24 326 32-S	1	Hose-Cleaner, Air
⓬	M-644025-S	2	Screw-HSH
⓭	M-641060-S	2	Nut-HF
⓮	25 468 01-S	1	Washer-Copper
⓯	M-629122-S	1	Stud-Carburetor
⓰	24 029 60-S	1	Adapter-Air Cleaner, Remote
⓱	24 041 36-S	1	Gasket-Base, Air Cleaner
⓲	24 314 28-S	1	Shield-Debris
⓳	24 086 06-S	2	Screw-Head, Phillips (11-16X3/4)
⓴	M-639016-S	2	Screw-HF (M6X1.0X16)
⓵	X-25-73-S	1	Washer-Plain
⓶	25 126 02-S	1	Air Cleaner Bracket ASM
⓷	24 126 142-S	1	Bracket-Cleaner, Air

Ref	Part No.	Qty.	Description
⓸	M-647060-S	2	Nut
⓹	25 113 27-S	1	Decal-Cleaner, Air



Exhaust Assembly Kohler CH745-0007

Ref	Part No.	Qty.	Description
①	25 072 04-S	4	Stud (M8X1.25X33)
②	24 041 49-S	2	Gasket-Exhaust
③	M-841080-S	4	Nut-HF (M8X1.25)
④	24 418 05-S	1	Sensor-Oxygen
①⑤	24 522 307	1	Short Block
①⑥	24 782 36	1	Miniblock

--	--	--	--

Attachments and Accessories

For 74255 - Z588E Z Master, With 60in TURBO FORCE Side Discharge Mower

Product Name	Model/Part
Belt-Seat	100-4928
Blade-Mid Flow, 20.5 Inch	105-7715-03
Blade-Lo Flow, 20.5 Inch	105-7716-03
Blade-Hi Flow, 20.5 Inch	105-7718-03
Blade-Recycler, 20.5 Inch	105-7777-03
Blade-Atomic, 20.5 Inch	105-8777-03
60 Inch Recycler Kit	107-1611
Hitch Kit	99-8925

NOTES

NOTES

NOTES

