



Twin and Triple Bagger Mounting Kit

For 2004 and After Diesel-Powered and 2005 and After Gas-Powered 500 Series Z Master

Model No. 107-9850

Installation Instructions

Note: Determine the left and right sides of the machine from the normal operating position.

Loose Parts

Use the chart below to verify that all parts have been shipped.

Step	Description	Qty.	Use
1	Side plate	1	Install the bagger side plates on a Z500 with a Gas Engine.
	Spacer	2	
	Bolt, (3/8 x 1-1/2 inches)	8	
	Flange Nut, (3/8 inch)	8	
	Curved washer	8	
2	Side plate	1	Install the bagger side plates on a Z593 with a Diesel Engine.
	Spacer	2	
	Bolt, (3/8 x 1-1/2 inches)	8	
	Flange Nut, (3/8 inch)	8	
	Curved washer	8	
3	Side plate	1	Install the bagger side plates on a Z597 with a Diesel Engine.
	Spacer	2	
	Bolt, (3/8 x 1-1/2 inches)	8	
	Flange Nut, (3/8 inch)	8	
	Curved washer	8	

Step

1

Installing the Bagger Side Plates on a Z500 with a Gas Engine

Parts needed for this step:

1	Side plate
2	Spacer
8	Bolt, (3/8 x 1-1/2 inches)
8	Flange Nut, (3/8 inch)
8	Curved washer

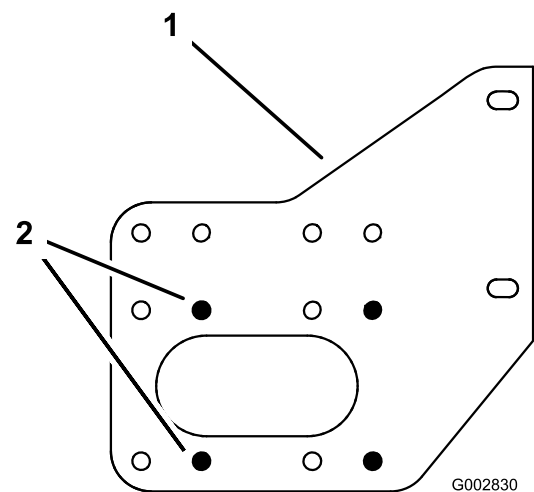


Figure 1

1. Side bracket (left side shown)
2. Use these holes when installing the side bracket

Procedure

1. Use Figure 1 for the correct holes to use when installing the side plate and ROPS.
2. Remove the bolts, nuts, and washers holding the roll bar to one side of the machine. Discard the nuts, bolts, and washers (Figure 2).

3. Install the bagger side plate and the roll bar section to the side of the machine using 4 bolts (3/8 x 1-1/2 inches), 4 curved washers (3/8 inch), and 4 flange nuts (3/8 inch) (Figure 2).
4. Torque the bolts and not the nut, to 30 ft-lb (40.7 N·m).
5. Repeat the steps above for the opposite side (Figure 2).

Note: Make sure the curved washer are installed as shown in Figure 2.

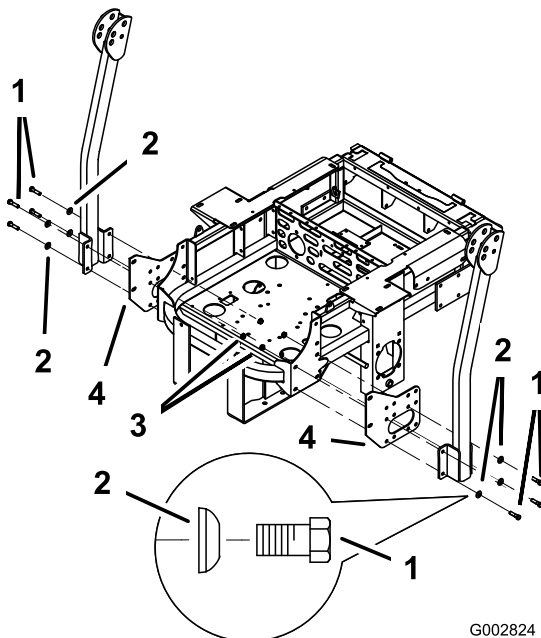


Figure 2

1. Bolt, (3/8 x 1-1/2 inches)
2. Curved washer, (3/8 inch)
3. Flange nut, (3/8 inch)
4. Side bracket
5. ROPS

6. When installing the bagger mounting bracket to the side brackets use the spacer provided in this kit (Figure 3).

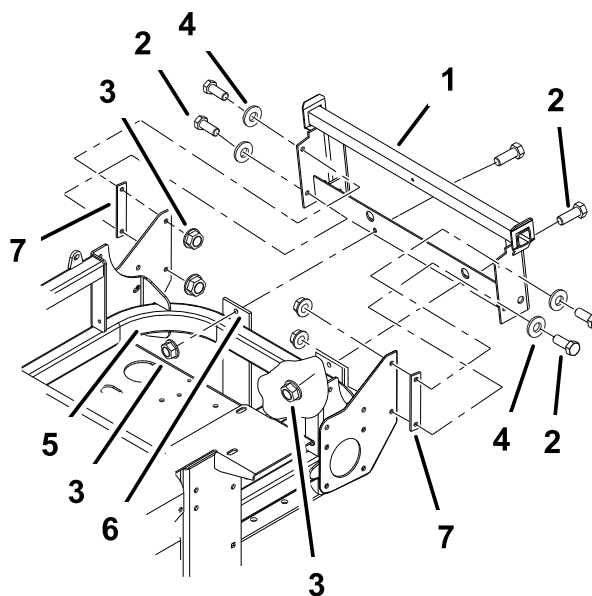


Figure 3

1. Bagger mounting bracket
2. Bolt, (3/8 x 1 inch)
3. Flange nut, (3/8 inch)
4. Curved washer, (3/8 inch)
5. Rear frame
6. Existing holes located here
7. Spacer

Step

2

Installing the Bagger Side Plates on a Z593 with a Diesel Engine

Parts needed for this step:

1	Side plate
2	Spacer
8	Bolt, (3/8 x 1-1/2 inches)
8	Flange Nut, (3/8 inch)
8	Curved washer

Procedure

1. Use Figure 4 for the correct holes to use when installing the side plate and ROPS.

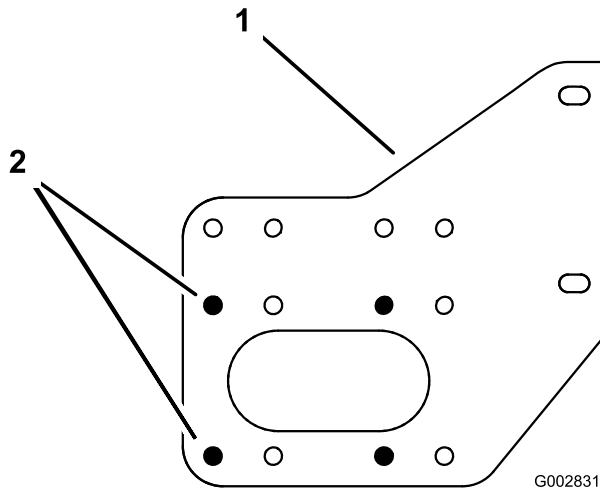


Figure 4

1. Side bracket (left side shown)
2. Use these holes when installing the side bracket

2. Remove the bolts, nuts, and washers holding the roll bar to one side of the machine. Discard the nuts, bolts, and washers (Figure 5).
3. Install the bagger side plate and the roll bar section to the side of the machine using 4 bolts (3/8 x 1-1/2 inches), 4 curved washers (3/8 inch), and 4 flange nuts (3/8 inch) (Figure 5).
4. Torque the bolts and not the nut, to 30 ft-lb (40.7 N·m).
5. Repeat the steps above for the opposite side (Figure 5).

Note: Make sure the curved washer are installed as shown in Figure 5.

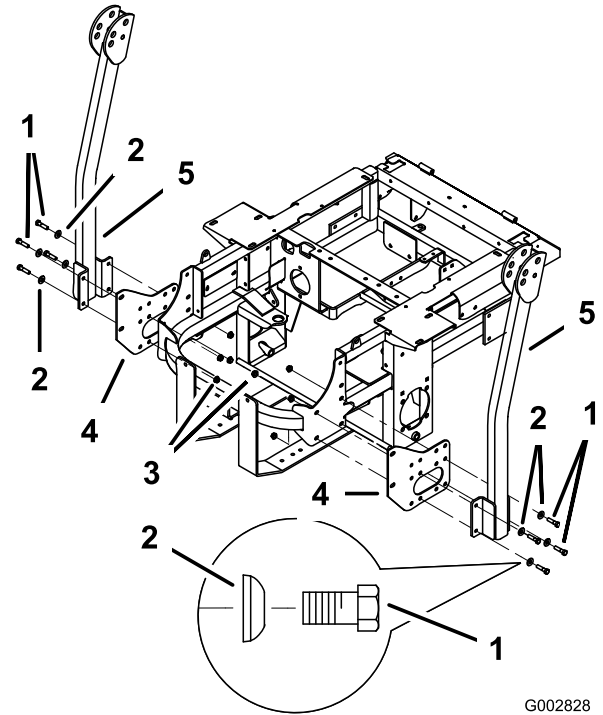


Figure 5

1. Side bracket
2. Curved washer, (3/8 inch)
3. Bolt, (3/8 x 1-1/2 inches)
4. Flange nut, (3/8 inch)
5. ROPS

6. When installing the bagger mounting bracket to the side brackets use the spacer provided in this kit (Figure 6).

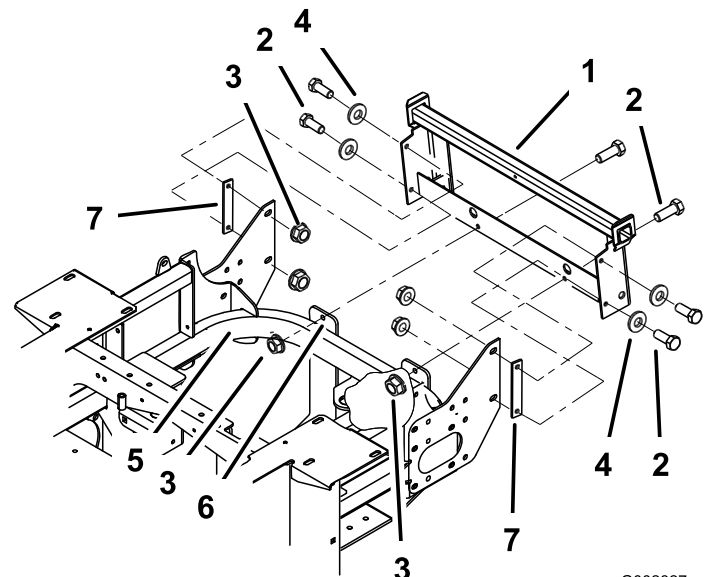


Figure 6

1. Bagger mounting bracket
2. Bolt, (3/8 x 1 inch)
3. Flange nut, (3/8 inch)
4. Curved washer, (3/8 inch)
5. Rear frame
6. Existing holes located here
7. Spacer

Step 3

Installing the Bagger Side Plates on a Z597 with a Diesel Engine

Parts needed for this step:

1	Side plate
2	Spacer
8	Bolt, (3/8 x 1-1/2 inches)
8	Flange Nut, (3/8 inch)
8	Curved washer

Procedure

1. Use Figure 7 for the correct holes to use when installing the side plate and ROPS.

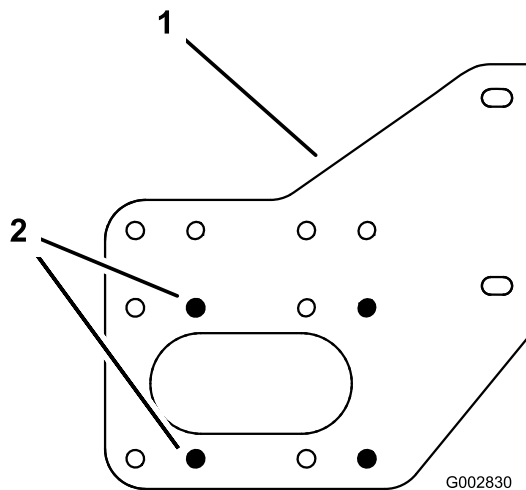


Figure 7

1. Side bracket (left side shown)
2. Use these holes when installing the side bracket

2. Remove the bolts, nuts, and washers holding the roll bar to one side of the machine. Discard the nuts, bolts, and washers (Figure 8).
3. Install the bagger side plate and the roll bar section to the side of the machine using 4 bolts (3/8 x 1-1/2 inches), 4 curved washers (3/8 inch), and 4 flange nuts (3/8 inch) (Figure 8).
4. Torque the bolts and not the nut, to 30 ft-lb (40.7 N·m).
5. Repeat the steps above for the opposite side (Figure 8).

Note: Make sure the curved washer are installed as shown in Figure 8.

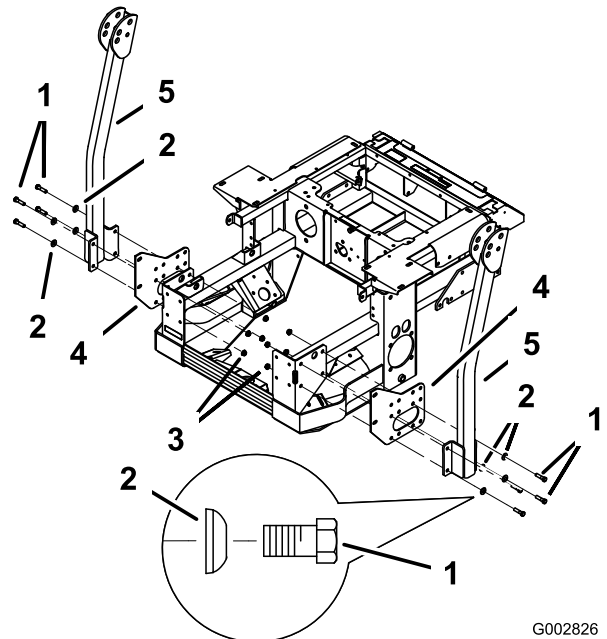


Figure 8

1. Side bracket
2. Curved washer, (3/8 inch)
3. Bolt, (3/8 x 1-1/2 inches)
4. Flange nut, (3/8 inch)
5. ROPS

6. When installing the bagger mounting bracket to the side brackets use the spacer provided in this kit (Figure 9).

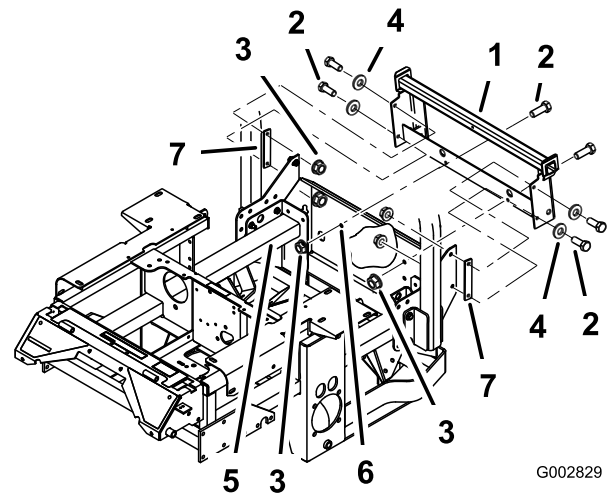


Figure 9

1. Bagger mounting bracket
2. Bolt, (3/8 x 1 inch)
3. Flange nut, (3/8 inch)
4. Curved washer, (3/8 inch)
5. Rear frame
6. Existing holes located here
7. Spacer