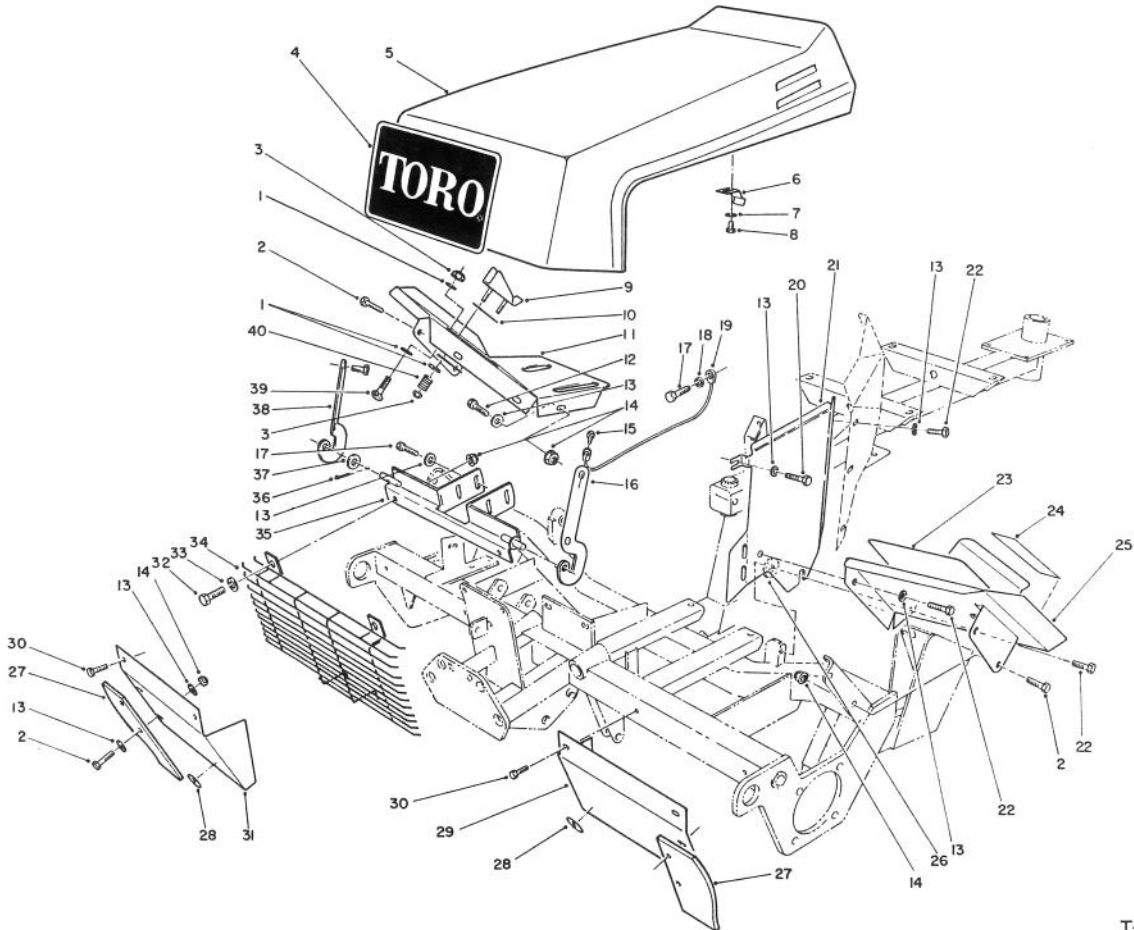


MODEL NO. 03430-90001 & UP

90317

PARTS
CATALOG

REELMASTER 216 - 3WD

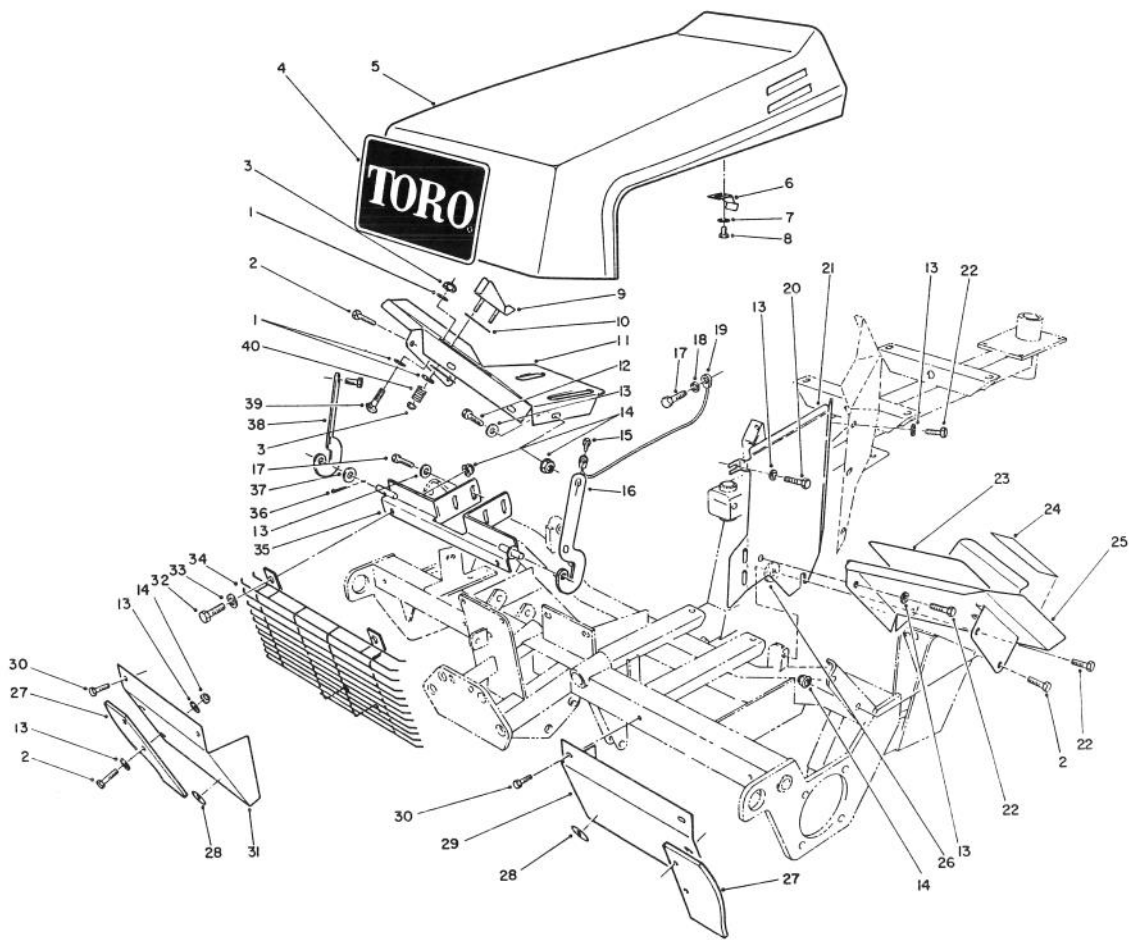


T-0881-89

HOOD ASSEMBLY

Ref. No.	Part No.	Description	No. Used
1	3256-22	Washer - Flat	4
2	3234-17	Screw - Cap Hex Hd.	14
3	3296-16	Nut - Lock	3
4	62-7400	Decal - TORO Logo	1
5	62-5400	Hood Assembly	1
6	62-5010	Latch - Hood	1
7	3256-2	Washer - Flat	2
8	32104-77	Screw - Hex. Hd. Self Tap	2
9	62-7320	Stop - Traction Pedal	1
10	62-7350	Slide - Pedal Stop	2
11	62-7210	Footrest R.H.	1
12	322-5	Screw - Cap Hex Hd.	2
13	3256-23	Washer - Flat	14
14	32128-25	Nut - Flange Lock	14
15	32144-22	Screw - Hex. Hd. Self Tap	4
16	28-0120	Bracket - Hinge L.H.	1
17	321-5	Screw - Cap Hex Hd.	5

Ref. No.	Part No.	Description	No. Used
18	3253-3	Washer - Lock	1
19	62-7310	Cable - Hood Stop	1
20	11-9760	Screw	1
21	72-4150	Shield - Heat	1
22	322-3	Screw - Cap Hex Hd.	3
23	66-6120	Pad - Foot	1
24	62-7280	Decal - Brake	1
25	72-4360	Footrest - L.H.	1
26	62-7190	Spacer	1
27	62-5000	Deflector - Grass	2
28	58-6520	Decal - Grease Fitting	2
29	61-2970	Shield - Front Grass L.H.	1
30	32104-82	Screw - Hex. Hd. Self Tap	4
31	61-2980	Shield - Front R.H.	1
32	322-43	Screw - Cap Hex Hd.	2
33	3256-70	Washer - Flat	2

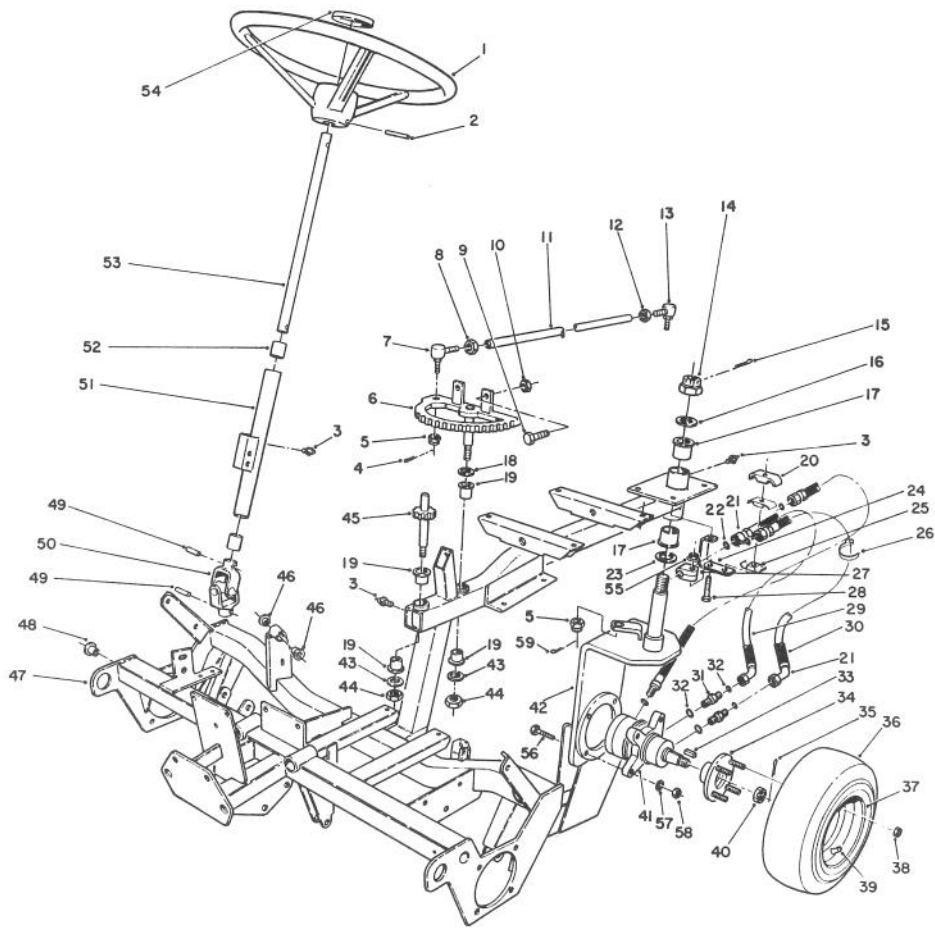


T-0881-89

HOOD ASSEMBLY (Continued)

Ref. No.	Part No.	Description	No. Used
34	66-5340	Grille - Front	1
35	61-3010	Support - Hood & Grille	1
36	3272-6	Pin - Cotter	1
37	3256-24	Washer - Flat	1

Ref. No.	Part No.	Description	No. Used
38	28-0130	Bracket - Hinge (R.H.)	1
39	3229-22	Bolt - Carriage	1
40	10-4850	Spring - Compression	2

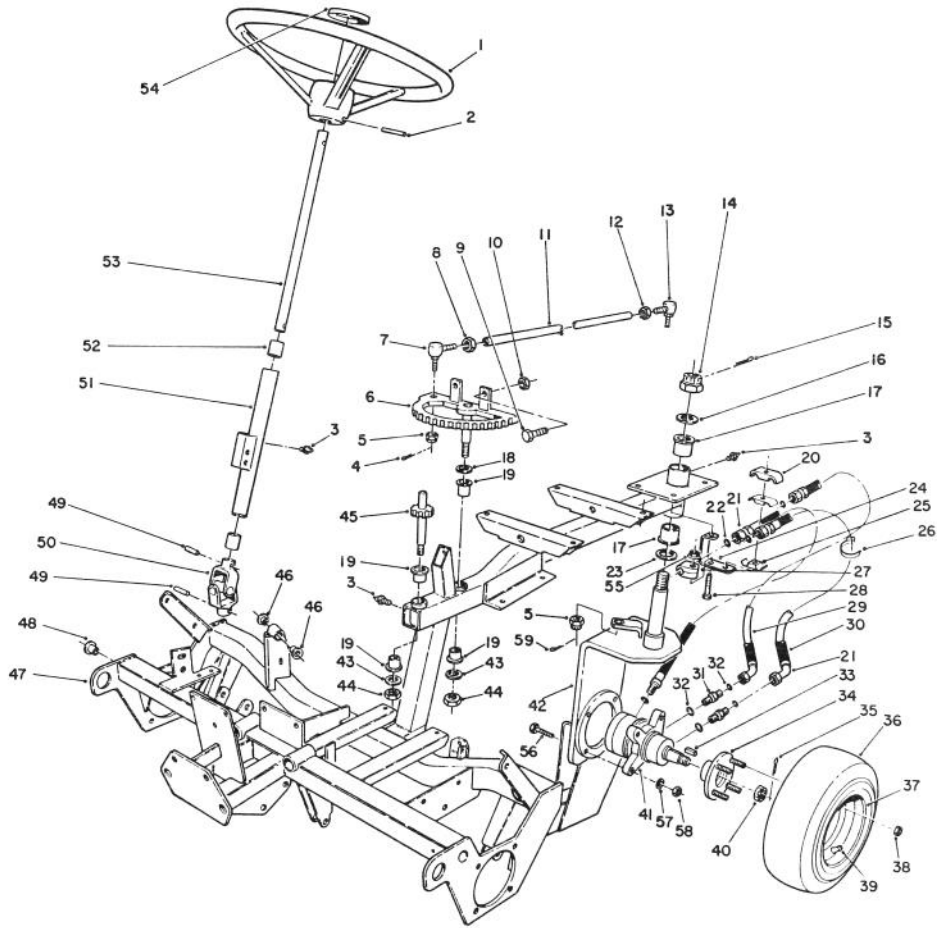


T-0882-89

FRAME AND STEERING ASSEMBLY

Ref. No.	Part No.	Description	No. Used
1	25-6260	Wheel - Steering (Incl. Ref. #40)	1
2	32121-10	Pin - Roll	1
3	302-5	Fitting - Grease	6
4	3272-6	Pin - Cotter	2
5	32136-4	Nut - Hex. Slotted	2
6	61-2040	Rack Assembly	1
7	21-0140	Balljoint - R.H. (Incl. Ref. #5)	1
8	3220-5	Nut - Jam (R.H.)	1
9	323-7	Screw - Cap Hex. Hd.	2
10	3218-3	Nut - Lock	2
11	61-2070	Tube - Steering	1
12	3220-12	Nut - Jam (L.H.)	1
13	21-0150	Balljoint - L.H. (Incl. Ref. #5)	1
14	32136-9	Nut - Hex. Slotted	1
15	3272-30	Pin - Cotter	1
16	61-2000	Washer	1
17	256-245	Bushing - Flange	2
18	3-6498	Washer	1
19	256-117	Bushing - Flange	4
20	2412-116	Cover - Clamp	1

Ref. No.	Part No.	Description	No. Used
21	71-0780	Hose Assembly	1
22	237-22	O-Ring	4
23	72-4170	Washer	1
24	71-0720	Bracket - Tube Support	1
25	2412-115	Clamp - Double	2
26	3290-378	Tie - Cable	6
27	2412-114	Clamp - Tube	1
28	321-8	Screw - Cap Hex Hd.	2
29	71-0790	Hose Assembly	2
30	71-0740	Sleeve - Protector	3
31	340-141	Fitting	2
32	237-80	O-Ring	2
33	65-4640	Key	1
34	10-6870	Hub - Wheel	1
35	3272-10	Cotter Pin	1
36	231-127	Tire	1
37	242-76	Wheel - Rim	1
38	242-50	Nut - Lug	4
39	232-47	Tube - Inner	1
40	65-4650	Nut - Slotted	1
41	66-5291	Motor - Hydraulic	1
42	71-0800	Castor Fork Assembly	1
43	3256-29	Washer	2

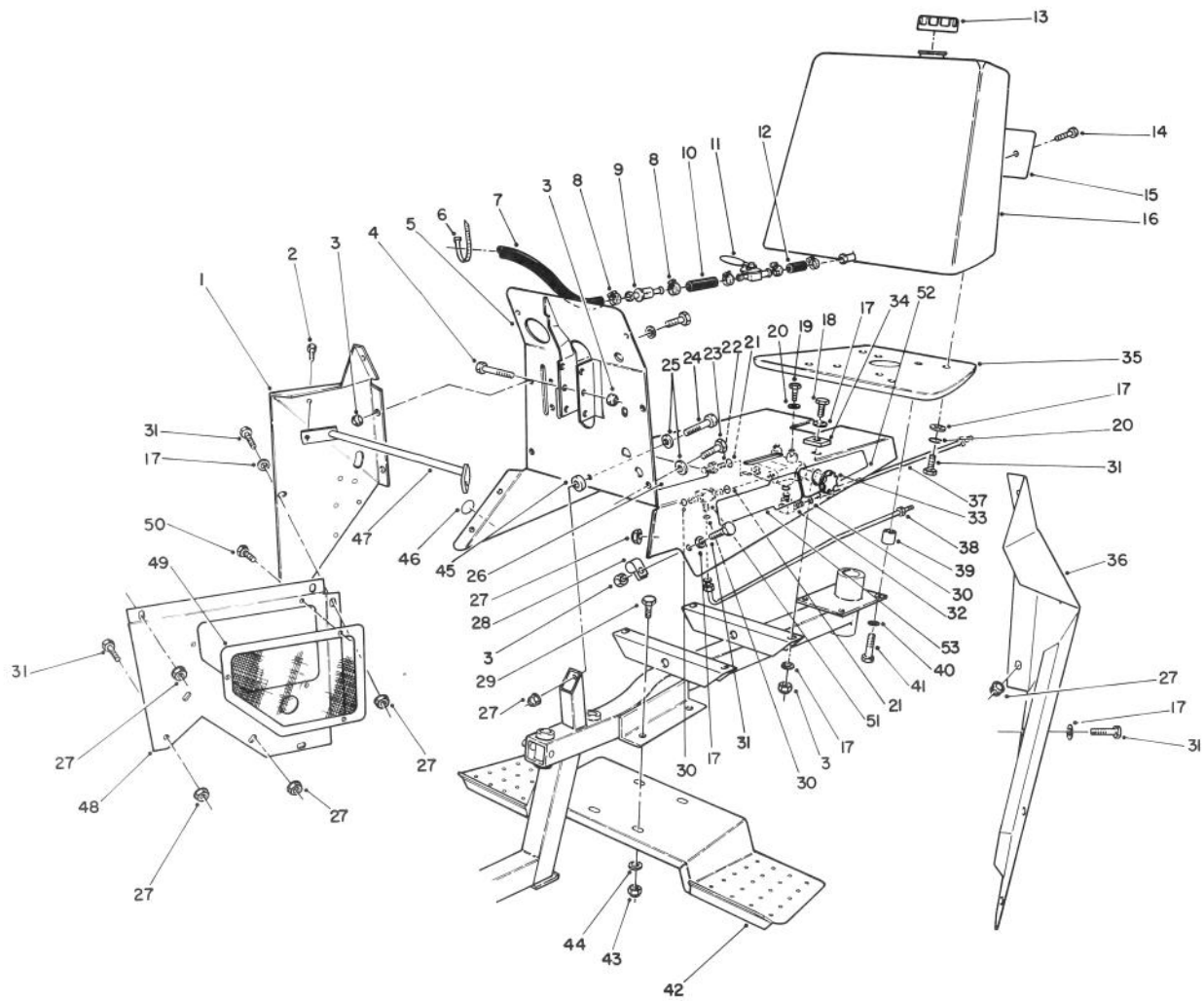


T-0882-89

FRAME AND STEERING ASSEMBLY (CONTINUED)

Ref. No.	Part No.	Description	No. Used
44	3296-28	Nut - Lock	2
45	61-2010	Pinion	1
46	256-287	Bushing - Flange	2
47	61-1400	Frame Ass'y (Incl. Ref. # 3, 17, 19, 46, & 48)	1
48	256-247	Bushing - Flange	2
49	32121-15	Pin - Roll	2
50	61-3360	Joint - Universal	1
51	61-2090	Column - Steering (Incl. Ref. # 3 & 52)	1

Ref. No.	Part No.	Description	No. Used
52	256-27	Bearing - Sleeve	2
53	61-2080	Shaft - Steering	1
54	24-2090	Cap - Steering Wheel	1
55	32128-14	Flange Nut	2
56	325-11	Screw - Cap Hex Hd.	4
57	3253-32	Washer - Lock	4
58	32128-27	Flange Nut	4
59	3272-7	Cotter Pin	1



T-0883-89

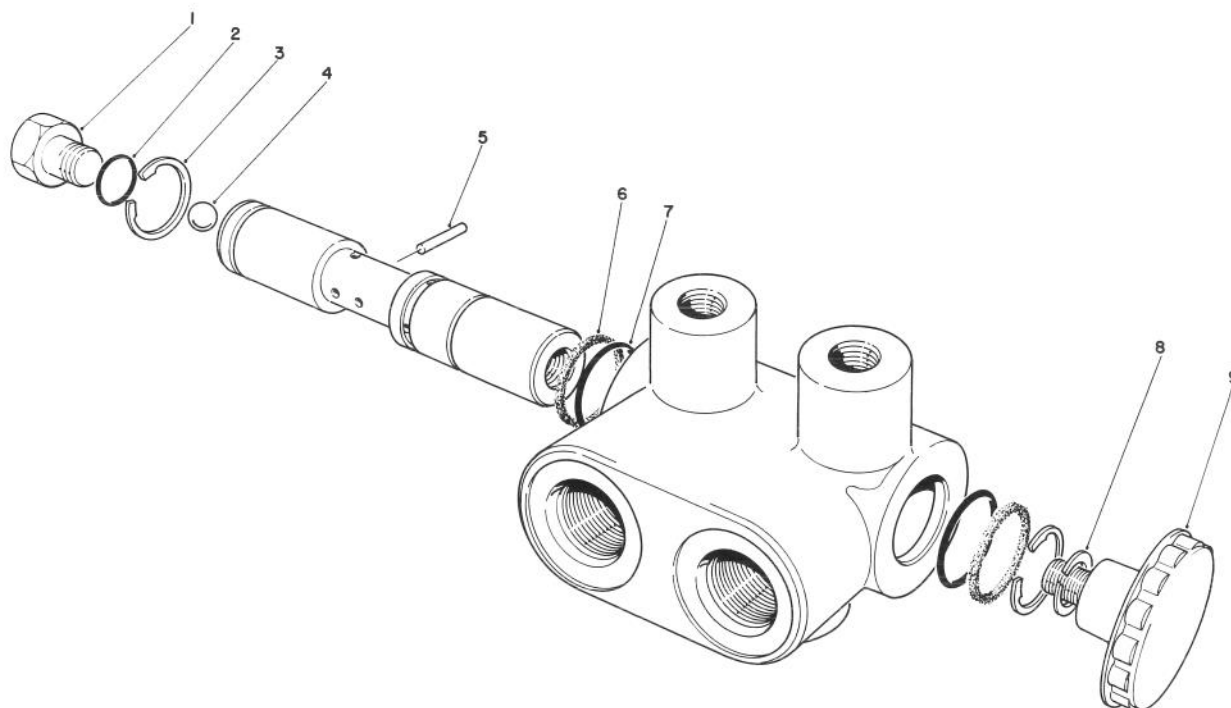
FUEL TANK ASSEMBLY

Ref. No.	Part No.	Description	No. Used
1	61-3880	Panel - Access R.H.	1
2	23234-14	Hex Hd. Capscrew	2
3	3296-29	Lock Nut	6
4	322-12	Hex Hd. Capscrew	1
5	61-3582	Panel - Instrument	1
6	3290-379	Tie - Cable	1
7	47-2988	Hose - Fuel	1
8	2412-36	Clamp - Hose	6
9	38-8000	Filter - Fuel	1
10	47-2980	Hose - Fuel	1
11	61-3550	Valve - Ball	1
12	56-2230	Hose - Fuel	1
13	55-3570	Cap - Fuel	1
14	3290-470	Screw	2
15	61-3310	Plate - Toro Logo	1
16	61-0030	Tank - Fuel	1
17	3256-23	Washer - Flat	21
18	322-6	Hex Hd. Capscrew	4
19	322-1	Hex Hd. Capscrew	2
20	3253-4	Lockwasher	2
21	237-79	O-Ring	3
22	340-4	Fitting (Incl. Ref. # 21)	1
23	322-43	Hex Hd. Capscrew	6
24	322-45	Hex Hd. Capscrew	1
25	3256-70	Washer - Flat	7
26	70-2510	Decal - Warning	1
27	32128-25	Flange Locknut	16

Ref. No.	Part No.	Description	No. Used
28	2412-71	Clamp - R	1
29	323-7	Hex Hd. Capscrew	4
30	237-30	O-Ring	3
31	322-3	Hex Hd. Capscrew	13
32	340-98	Fitting (Incl. Ref. # 21 & 30)	1
33	71-2830	Valve - 2 Position	1
34	62-7200	Spacer	4
35	61-2680	Weight - 5 Bld.	1
*	62-5140	Weight - 8 Bld. (Optional)	1
36	72-4350	Panel - Access	1
37	71-0840	Tube Assembly	1
38	71-0710	Tube Assembly	1
+39	61-2220	Spacer	4
40	3253-21	Lockwasher	4
41	323-9	Hex Hd. Capscrew	4
42	61-3700	Step - Foot	1
43	3296-39	Locknut	4
44	3256-4	Flat Washer	4
45	62-7170	Spacer	1
46	58-6520	Decal - Grease Fitting	1
47	62-5330	Bracket - Side Panel	1
48	61-3460	Support - Hydraulic Tank	1
49	61-3450	Screen - Support	1
50	32104-76	Self Tapping Screw	3
51	340-109	Fitting (Incl. Ref # 21, & 30)	1
52	70-2520	Decal - Control	1
53	61-3840	Decal - Reelmaster 216	2

+ Use with 5 bld. cutting units only.

* Not Illustrated



T-0672-89

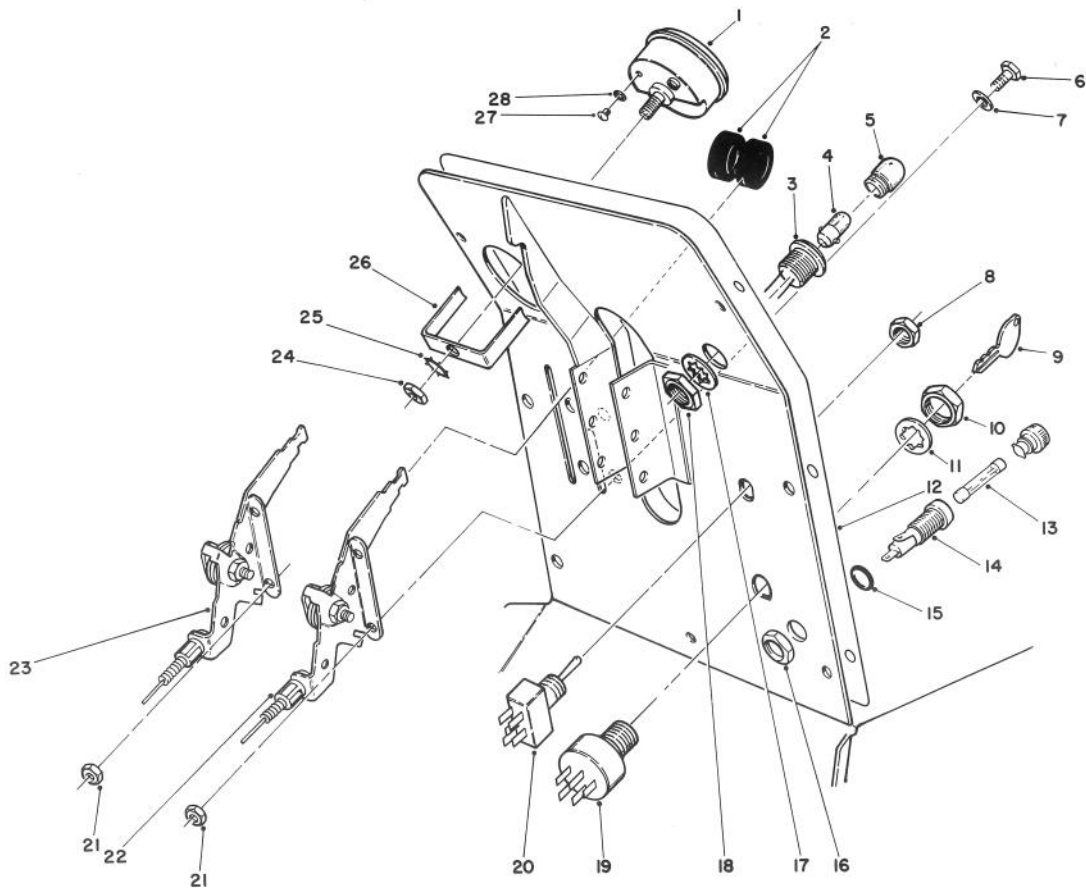
TWO POSITION VALVE NO. 71-2830

Ref. No.	Part No.	Description	No. Used
1	352-512	Plug - Hydraulic	1
2	237-22	O-Ring	1
3	32151-50	Ring - Retaining	2
4	354-23	Ball - Check 5/16"	1
5	32121-38	Pin - Roll	1
6+		Washer - Backup	2

Ref. No.	Part No.	Description	No. Used
7	237-54	O-Ring	2
8	3253-5	Washer - Lock	1
9	233-46	Knob	1
*	71-1220	Seal Repair Kit (Incl. Ref. # 2, 3, 6, & 7)	1

* Not Illustrated

+ Available only in Seal Repair Kit 71-1220

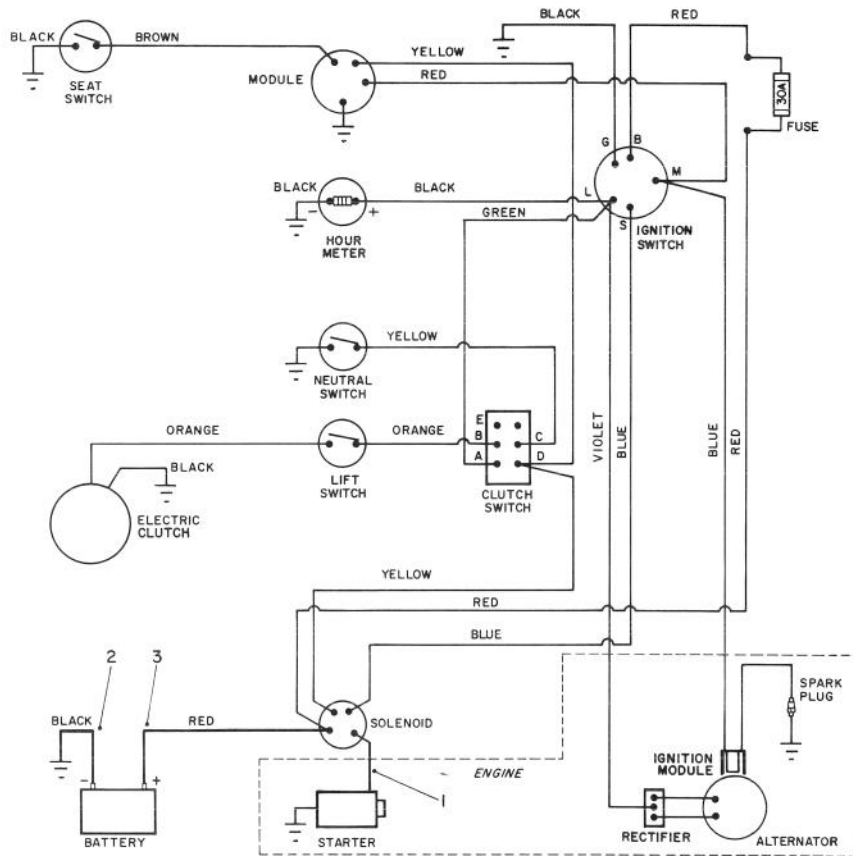


T-0264

INSTRUMENT PANEL ASSEMBLY

Ref. No.	Part No.	Description	No. Used	Ref. No.	Part No.	Description	No. Used
1	12-9990	Meter - Hour (Incl. Ref. #24-28)	1	15		Seal - O-Ring	1
2	233-35	Knob	2	16		Nut - Hex.	1
3	44-2212	Lamp - Pilot (Incl. Ref. #4, 5 & 17-18)	1	17	218-536	Washer - Lock	1
†4		Bulb - Light (GE #1893)	1	18	218-535	Nut	1
5	218-562	Lens	1	19	23-0660	Switch - Key (Incl. Ref. #9-11)	1
6	321-39	Screw - Cap Hex. Hd.	4	20	37-2610	Switch - Clutch (Incl. Ref. #8)	1
7	3256-1	Washer - Flat	4	21	3296-16	Nut - Lock	4
8	218-500	Nut	1	22	61-2630	Control - Choke	1
9	218-412	Key (Set of 2)	1	23	61-2640	Control - Throttle	1
10	218-461	Nut	1	24	3217-26	Nut - Hex.	1
11	3254-5	Washer - Lock	1	25	3254-1	Washer - Lock	1
12	71-4710	Decal - Instrument Panel	1	26	218-515	Bracket - Mounting	1
†13		Fuse - 30 Amp.	1	27	3250-15	Screw - Pan Hd.	2
14	218-489	Fuse Holder Assembly (Incl. Ref. #15-16)	1	28	3254-10	Washer - Lock	2

+ Obtain Locally



KEY SWITCH
 OFF G B M
 RUN B & L
 START B & S

CLUTCH SWITCH
 OFF B B E, C & D
 ON A B B

SEAT SWITCH N.O.
 CLOSED BY SEATED OPERATOR

NEUTRAL SWITCH N.O.
 CLOSED IN NEUTRAL

LIFT SWITCH N.O.
 CLOSED WHEN CYL. IS RETRACTED

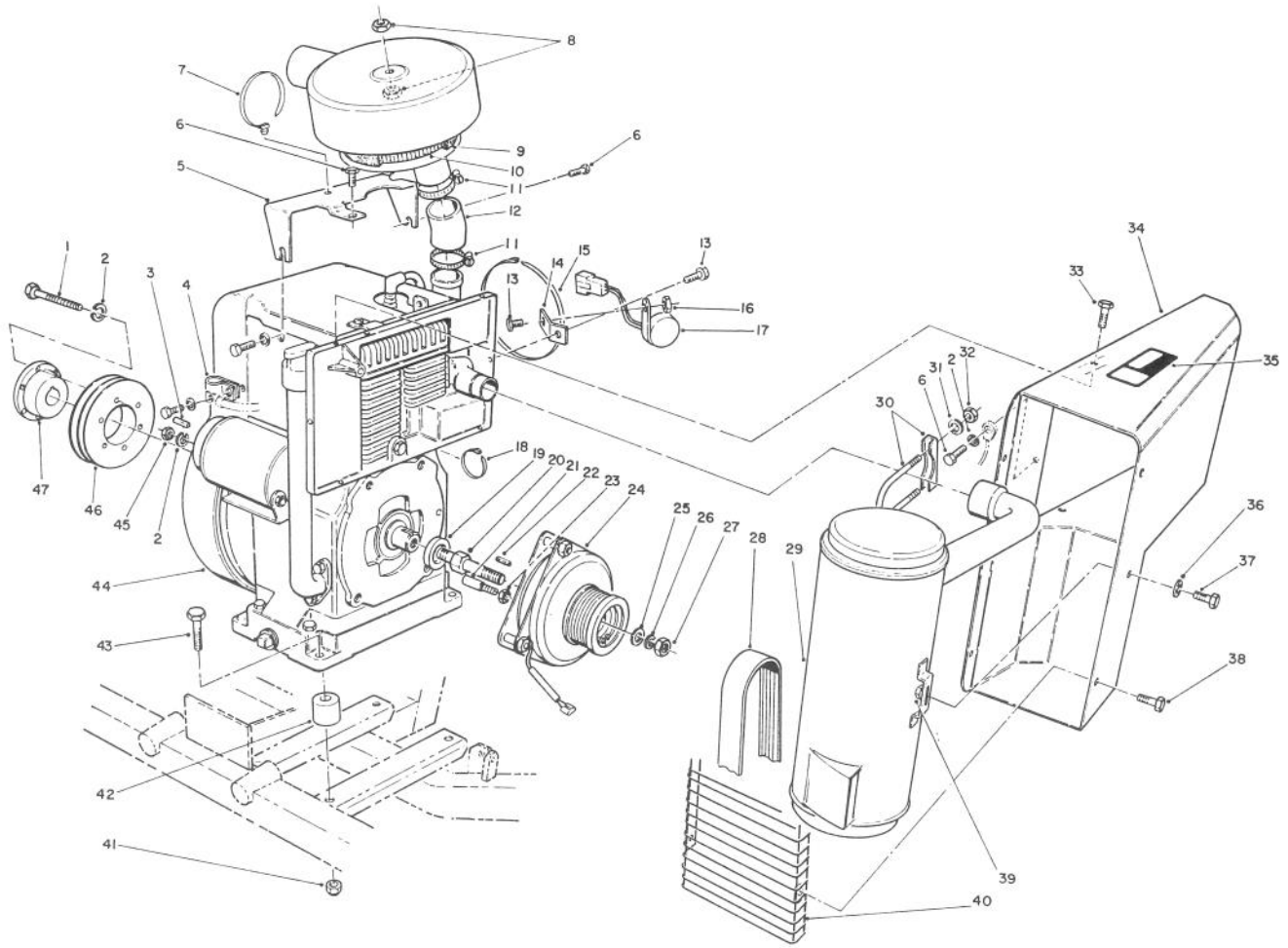
T-0265

ELECTRICAL SCHEMATIC

Ref. No.	Part No.	Description	No. Used
1	61-2660	Wire - Solenoid/Starter	1
2	61-2670	Wire - Ground	1

Ref. No.	Part No.	Description	No. Used
3	10-7130	Wire - Battery/Solenoid	1
*	71-1390	Wire Harness Assembly	1

*Not Illustrated

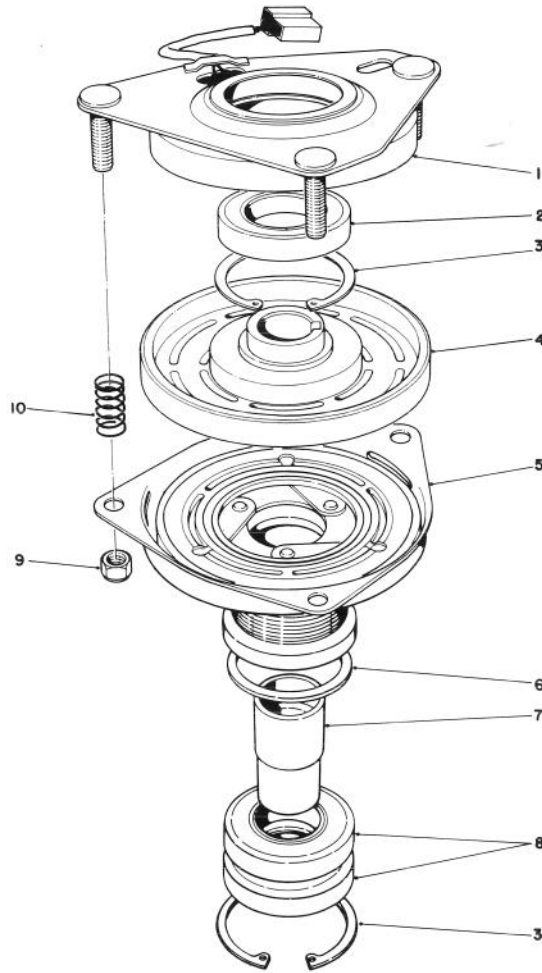


T-0884

ENGINE & CLUTCH ASSEMBLY

Ref. No.	Part No.	Description	No. Used
1	321-13	Screw - Cap Hex. Hd.	3
2	3253-3	Washer - Lock	3
3	10-7070	Key - Square	1
4	2412-41	Clamp - R	1
5	61-2120	Bracket - Air Cleaner	1
6	3234-4	Screw - Cap Hex Hd.	3
7	3290-410	Tie - Push Mount	1
8	3296-56	Nut - Lock	2
9		Precleaner - Air Cleaner	1
10		Element - Air Cleaner	1
11	2412-92	Clamp - Hose	2
12	61-3470	Hose	1
13	3234-20	Screw - Cap Hex Hd.	2
14	61-3590	Strap - Ground	1
15	3333-975	Tie - Cable	1
16	3296-16	Nut - Lock	1
17	59-9810	Module - Ignition	1
18	3290-378	Tie - Cable	1
19	70-7080	Spacer - Clutch	1
20	70-8010	Stud	1
21	61-2170	Stop - Clutch	1
22	70-8030	Key	1
23	3218-3	Nut - Jam	1
24	61-0050	Clutch Assembly	1
25	70-7090	Washer - Flat	1
26	3253-6	Washer - Lock	1

Ref. No.	Part No.	Description	No. Used
27	3296-7	Nut - Lock	1
28	61-3390	Belt - Poly-V	1
29	61-0040	Muffler	1
30	2112-9	Clamp - Muffler (Incl. Ref. # 31-32)	1
31	3253-4	Washer - Lock	2
32	3217-6	Nut - Hex.	2
33	12-3270	Screw - Cap Hex. Hd.	8
34	61-0020	Shroud - Muffler	1
35	62-7290	Decal - Hot	1
36	3256-70	Washer - Flat	2
37	322-46	Screw - Cap Hex. Hd.	2
38	11-9760	Screw - Thr'd Form	4
39	32149-12	Nut - Keps	2
40	66-5330	Grille - Muffler	1
41	3296-39	Nut - Lock	4
42	61-2220	Spacer - Engine	4
43	323-47	Screw - Cap Hex. Hd.	4
44		Engine - Kohler Model No. M16 Spec. No. 711526	1
45	3218-1	Nut - Hex.	1
46	61-3330	Pulley - Engine	1
47	61-3340	Bushing - Taper (Incl. Ref. #1-2)	1
	62-7290	Decal - Hot	1

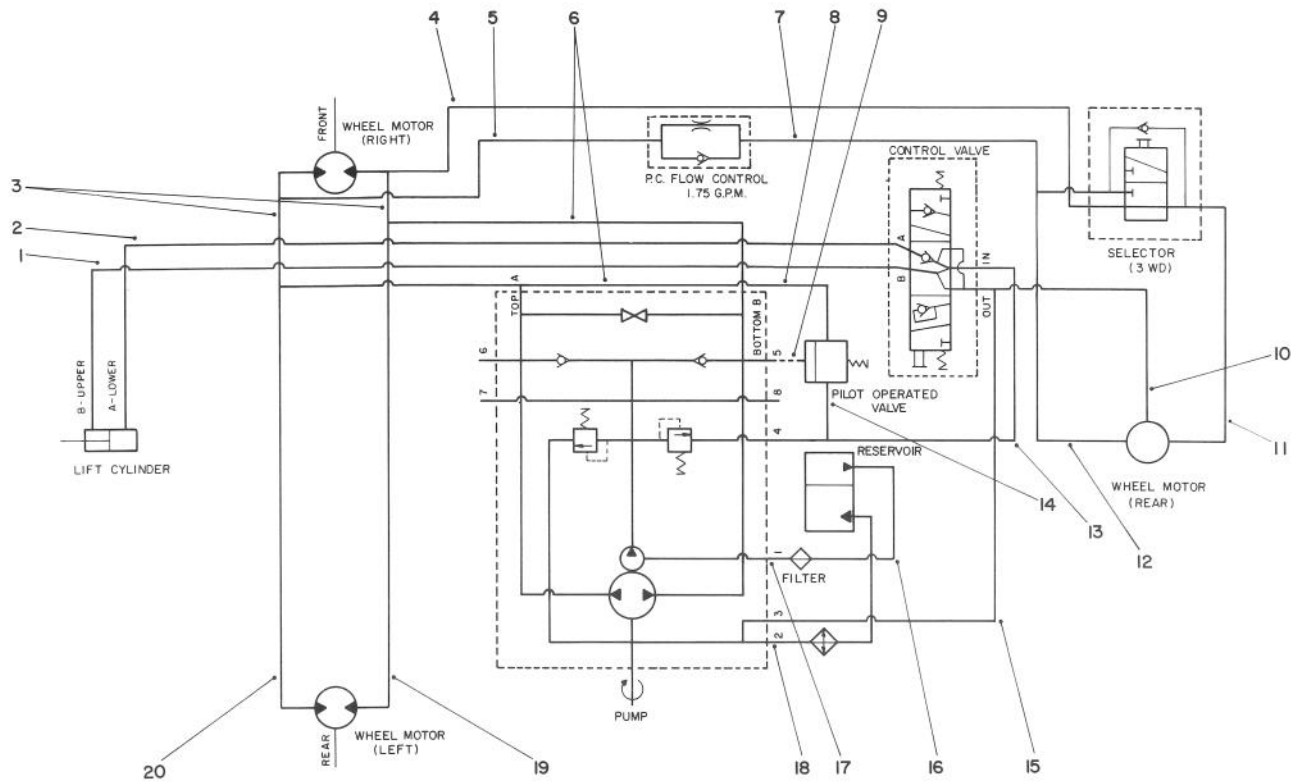


T-0267

ELECTRIC CLUTCH ASSEMBLY NO. 61-0050

Ref. No.	Part No.	Description	No. Used
1	44-8350	Field Assembly (Incl. Ref. #2 & 3)	1
2	251-292	Bearing - Field	1
3	44-8310	Ring - Retaining	2
4	44-8360	Field Coil, Rotor & Bearing Assembly (Incl. Ref. #1)	1

Ref. No.	Part No.	Description	No. Used
5	62-5250	Armature & Pulley Assy. (Incl. Ref. 3, 6, 7 & 8)	1
6	44-8330	Spacer - Pulley Bearing	1
7	62-5260	Collar - Bearing	1
8	251-291	Bearing - Pulley	2
9	3296-6	Nut - Lock	3
10	44-8320	Spring - Compression	3

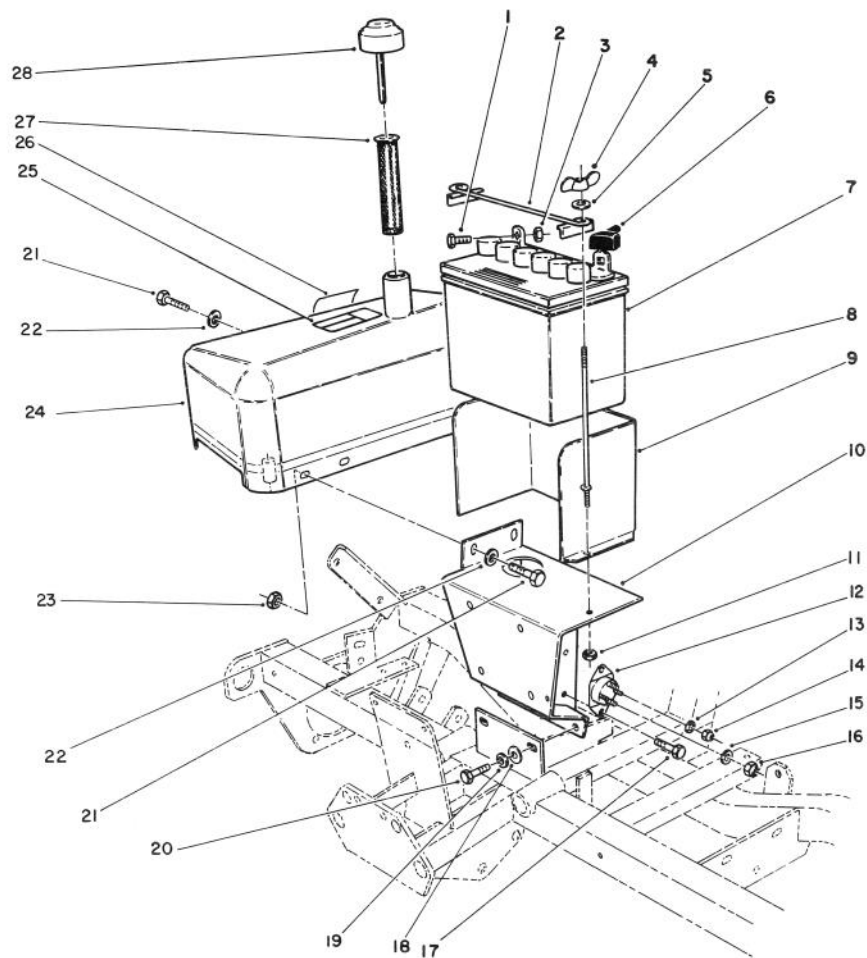


T-0891-89

HYDRAULIC SCHEMATIC

Ref. No.	Part No.	Description	No. Used
1	61-2500	Hose Assembly	1
2	61-2490	Hose Assembly	1
3	71-0870	Tube Assembly	2
4	71-0910	Tube Assembly	1
5	71-0880	Tube Assembly	1
6	61-3130	Hose Assembly	1
7	71-0850	Tube Assembly	1
8	63-4840	Hose Assembly	1
9	63-4890	Hose Assembly	1
10	71-0860	Tube Assembly	1

Ref. No.	Part No.	Description	No. Used
11	71-0840	Tube Assembly	1
12	71-0710	Tube Assembly	1
13	61-2520	Hose Assembly	1
14	63-4880	Hose Assembly	1
15	61-2510	Hose Assembly	1
16	61-2550	Hose Assembly	1
17	61-2540	Hose Assembly	1
18	63-5170	Hose Assembly	1
19	61-3070	Tube Assembly	1
20	61-3080	Tube Assembly	1

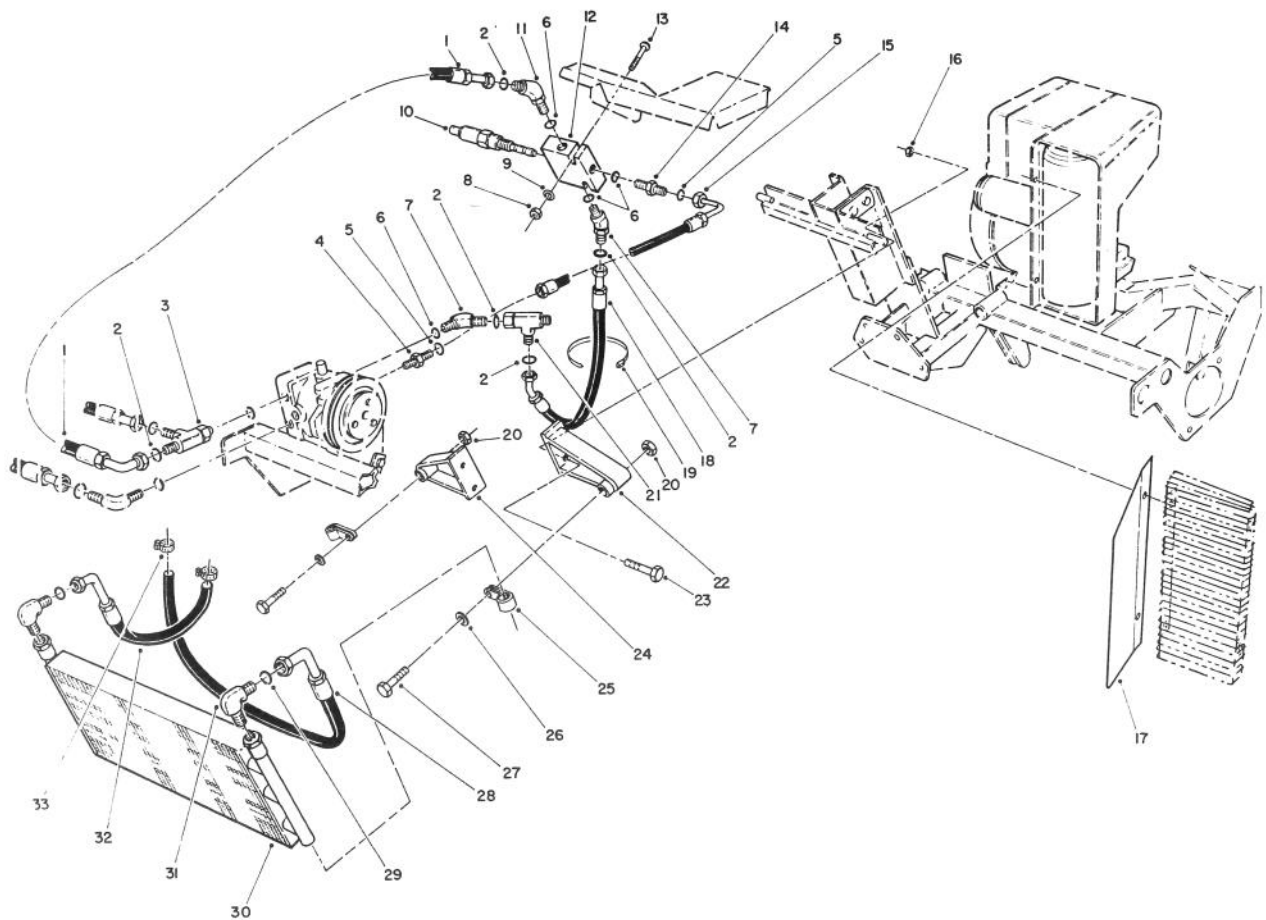


T-0885-89

HYDRAULIC TANK & BATTERY ASSEMBLY

Ref. No.	Part No.	Description	No. Used
1	322-3	Screw - Cap Hex. Hd.	2
2	7-0536	Battery Clamp Assy	1
3	3217-6	Nut - Hex.	2
4	32103-12	Nut - Wing	2
5	3256-1	Washer - Flat	2
6	28-8080	Boot - Battery Terminal	1
7	28-1400	Battery - 12 Volt	1
8	10-8120	Bolt - Battery	2
9	61-2820	Shield	1
10	61-2380	Battery Support W.A.	1
11	32149-2	Nut - Hex	2
12	28-4210	Solenoid - Starter	1
13	3254-1	Washer - Lock	2
14	3219-14	Nut - Hex.	2

Ref. No.	Part No.	Description	No. Used
15	3253-4	Washer - Lock	2
16	3218-13	Nut - Lock	2
17	12-3270	Screw - Hex. Hd. Self Tap	2
18	3256-24	Washer - Flat	2
19	3253-21	Washer - Lock	2
20	11-0590	Screw - Cap Hex. Hd.	2
21	322-43	Screw - Cap Hex. Hd.	4
22	3256-70	Washer - Flat	4
23	32128-25	Nut - Lock	2
24	61-0100	Tank - Hydraulic	1
25	62-7290	Decal - Hot	1
26	58-6530	Decal - Oil	1
27	61-2790	Screen - Filler	1
28	61-2800	Cap & Dipstick Assembly	1

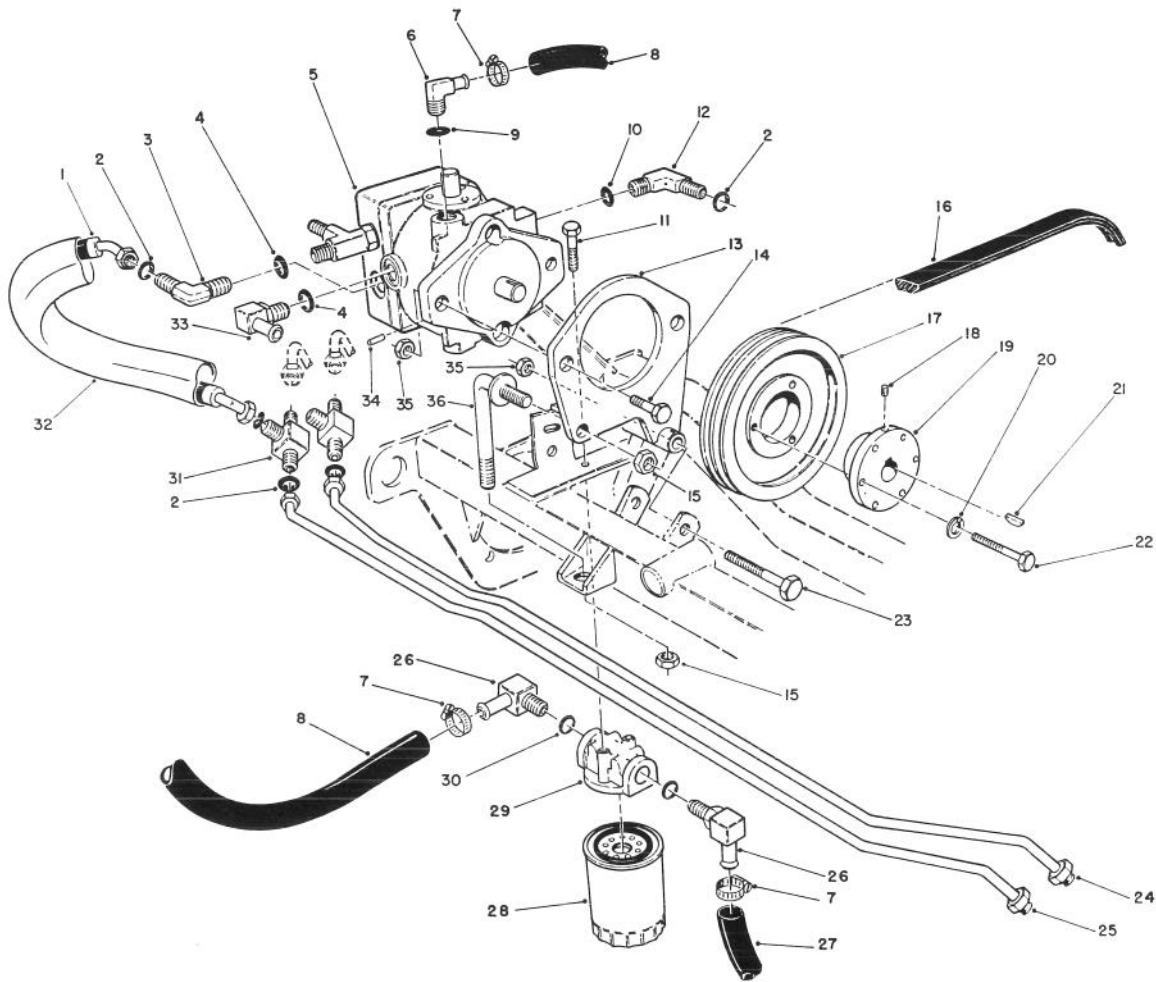


T-0886-89

HYDRAULIC OIL COOLER ASSEMBLY

Ref. No.	Part No.	Description	No. Used	Ref. No.	Part No.	Description	No. Used
1	63-4870	Hydraulic Hose Assembly	1	17	63-8940	Shield - Cooler	1
2	237-30	Seal - O-Ring	5	18	63-4880	Hydraulic Hose Assembly	1
3	340-109	Fitting - Male Tee (Incl. Ref. #2)	1	19	3290-379	Tie - Cable	1
4	340-107	Fitting - Straight (Incl. Ref. #5)	1	20	3296-39	Nut - Hex.	2
5	237-150	Seal - O-Ring	2	21	340-104	Fitting - Male/Female Tee (Incl. Ref. #2)	1
6	237-22	Seal - O-Ring	4	22	63-5340	Bracket - Cooler L.H.	1
7	340-96	Fitting - 45° Elbow (Incl. Ref. #2 & 6)	2	23	322-4	Screw - Hex. Washer Hd.	4
8	32128-32	Nut - Hex Flange	2	24	63-5350	Bracket - Cooler R.H.	1
9	3256-22	Washer - Flat	2	25	2412-39	Clamp - R	2
10	63-8790	Valve - Pressure Sequence	1	26	3256-24	Washer - Flat	2
11	63-8770	Fitting - 45° Orifice (Incl. Ref. #2 & 6)	1	27	323-10	Screw - Cap Hex. Hd.	2
12	63-5080	Valve Assy. (Incl. Ref.#10)	1	28	63-5180	Hydraulic Hose Assembly	1
13	321-11	Screw - Cap Hex. Hd.	2	29	237-151	Seal - O-Ring	2
14	340-1	Fitting - Straight (Incl. Ref. #5 & 6)	1	30	63-5400	Exchanger - Heat	1
15	63-4890	Hydraulic Hose Assembly	1	31	340-108	Fitting - 90° Male Elbow (Incl. Ref. #29)	2
16	32128-25	Nut - Hex.	4	32	63-5170	Hydraulic Hose Assembly	1
				33	2412-34	Clamp - Hose	2
				*	63-8800	Seal Kit - Pressure Valve	1
				*	56-7982	Sleeve - Protective	1

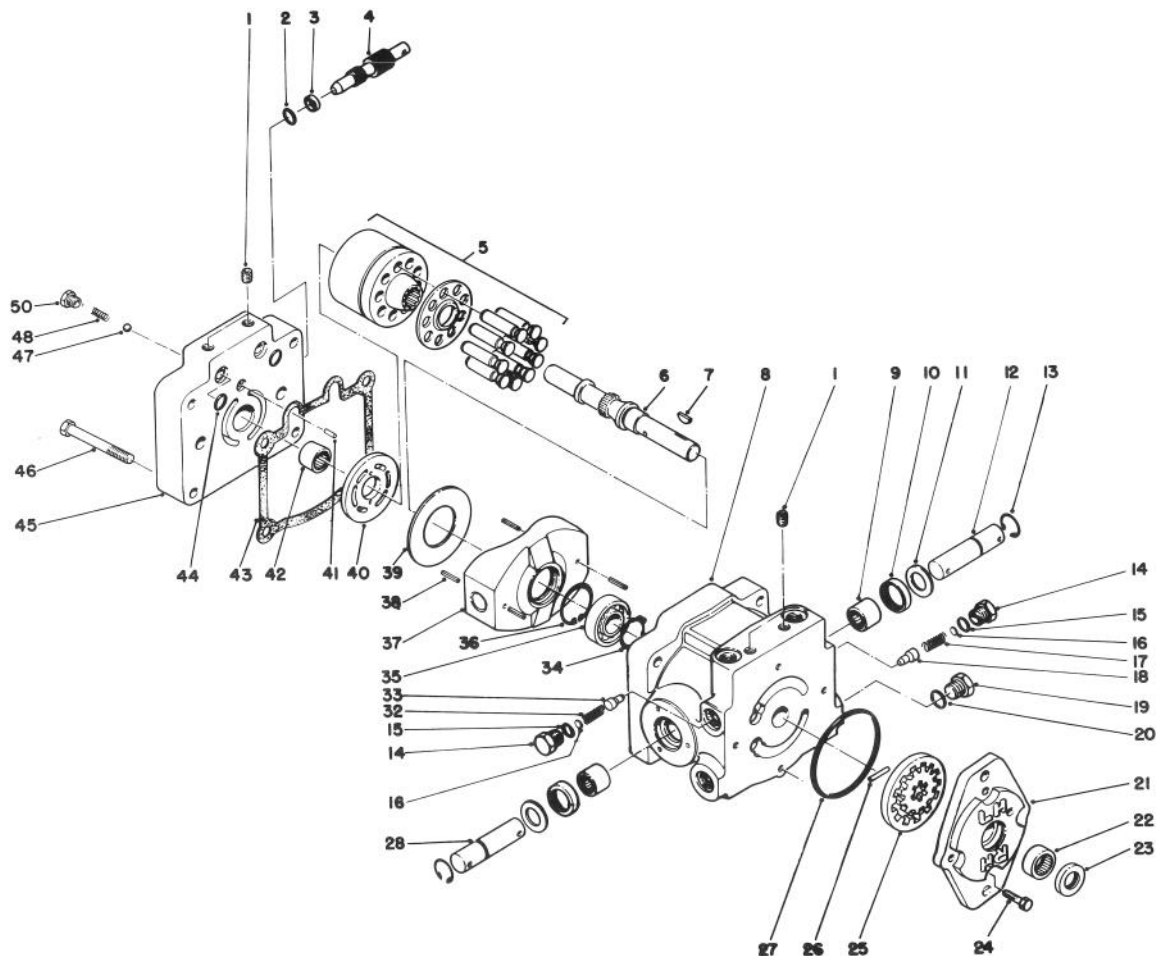
*Not Illustrated



T-0887-89

HYDRAULIC DRIVE ASSEMBLY

Ref. No.	Part No.	Description	No. Used	Ref. No.	Part No.	Description	No. Used
1	61-3130	Hydraulic Hose	2	19	61-3350	Bushing - Taper (Incl. Ref. #12, 18 & 22)	1
2	237-30	O-Ring	10	20	3253-3	Washer - Lock	3
3	340-98	Fitting - 90° Elbow (Incl. Ref. #2 & 4)	1	21	3257-32	Key - Woodruff	1
4	237-79	O-Ring	2	22	321-13	Screw - Cap Hex. Hd.	3
5	61-0080	Pump Assembly (Incl Ref. #20)	1	23	325-18	Screw - Cap Hex. Hd.	1
6	61-2710	Fitting - 90° Hose Elbow (Incl. Ref. #9)	1	24	61-3080	Tube - Hyd. L.H. (Front)	1
7	2412-3	Clamp - Hose	4	25	61-3070	Tube - Hyd. L.H. (Rear)	1
8	61-2540	Hose - Hydraulic	1	26	23-8910	Fitting - 90° Hose Elbow (Incl Ref. #30)	2
9	237-80	O-Ring	1	27	61-2550	Hose - Hydraulic	1
10	237-22	O-Ring	2	28	54-0110	Filter - Oil	1
11	3234-4	Screw - Hex. Washer Hd.	2	29	61-3770	Head - Filter	1
12	340-96	Fitting - 45° Elbow (Incl. Ref. #2 & 10)	3	30	237-117	O-Ring	2
13	61-2230	Plate - Pump Mount	1	31	340-102	Fitting - Tee (Incl. Ref. #2)	2
14	325-7	Screw - Cap Hex. Hd.	2	32	56-7982	Sleeve - Protective	3
15	3296-39	Nut - Lock	3	33	353-954	Fitting - 90° Hose Elbow (Incl Ref. #4)	1
16	61-3400	V-Belt - Pump	1	34	32121-34	Pin - Roll	1
17	61-3320	Pulley - Pump	1	35	3296-23	Nut - Lock	3
18	3245-9	Screw - Set	1	36	63-8820	Adjustment Rod Assembly	1

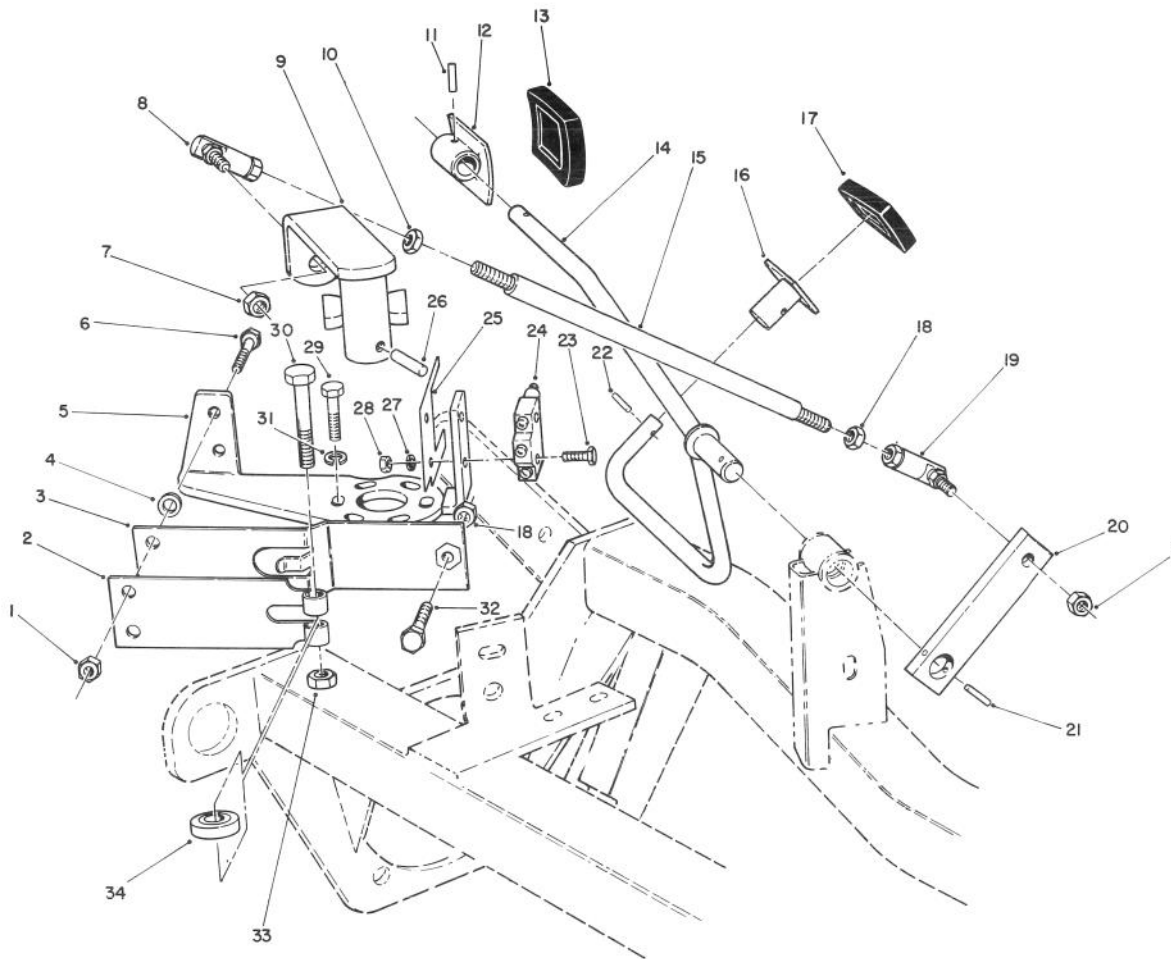


T-0245

HYDRAULIC PUMP ASSEMBLY NO. 61-0080

Ref. No.	Part No.	Description	No. Used	Ref. No.	Part No.	Description	No. Used
1	285-17	Plug - Pipe	6	26	25-2530	Pin - Straight	1
2	237-22	O-Ring	1	27	237-95	O-Ring	1
3	25-2630	Ring	1	28	49-8480	Shaft - Trunnion	1
4	25-2620	Valve - By-Pass	1	32	25-2480	Spring - Charge Relief	1
5	48-1800	Cylinder Block Kit	1	33	67-8070	Cone - Charge Relief	1
6	67-8020	Shaft - Pump	1	34	32120-15	Ring - Retaining	1
7	3257-32	Key - Woodruff	1	35	251-8	Bearing - Ball	1
8	61-0080	Hydraulic Pump Assembly (Complete)	1	36	32120-11	Ring - Retaining	1
9	252-82	Bearing - Needle	2	37	25-2450	Swash/Plate	1
10	25-3210	Seal - Lip	2	38	32121-91	Pin - Coiled Spring	3
11	25-2510	Washer	2	39	25-2380	Plate - Thrust	1
12	25-2580	Shaft - Trunnion	1	40	25-2390	Plate - Valve	1
13	32151-46	Ring - Retaining	2	41	25-2430	Pin - Straight	1
14	25-2460	Plug	2	42	67-8080	Bearing - Needle	1
15	237-86	O-Ring	2	43	25-2400	Gasket	1
16	25-2470	Kit - Shim Pack	2	44	62-4290	O-Ring	2
17	25-2570	Spring - Relief Valve	1	45		Cap - Pump End	1
18	25-2560	Cone - Relief Valve	1	46	323-11	Screw - Cap Hex. Hd.	4
19	67-8030	Plug Assy. (Incl. Ref. #20)	1	47	25-2490	Ball - Check Valve	2
20	67-8040	O-Ring	1	48	25-2640	Spring - Check Valve	2
21	25-2690	Housing - Charge Pump	1	50	25-2650	Plug - Check Valve	2
22	67-8050	Bearing - Needle	1	*	25-3180	Kit - Check Valve (Incl. Ref. #47-50)	1
23	67-8060	Seal-Lip	1	*	49-8520	Kit - Implement Relief (Incl. Ref. #14-18)	1
24	322-4	Screw - Cap Hex. Hd.	4				
25	25-2680	Gerotor Assembly	1				

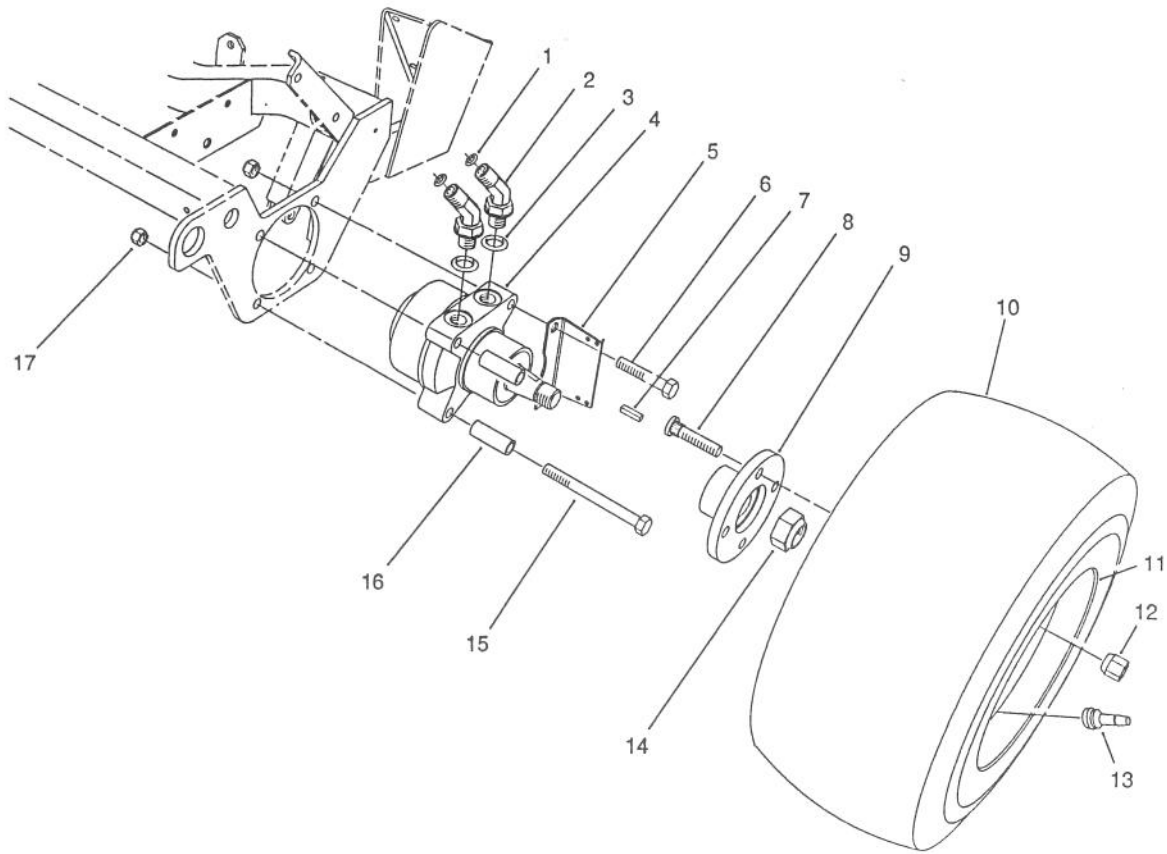
*Not Illustrated



T-0888-89

TRACTION CONTROLS ASSEMBLY

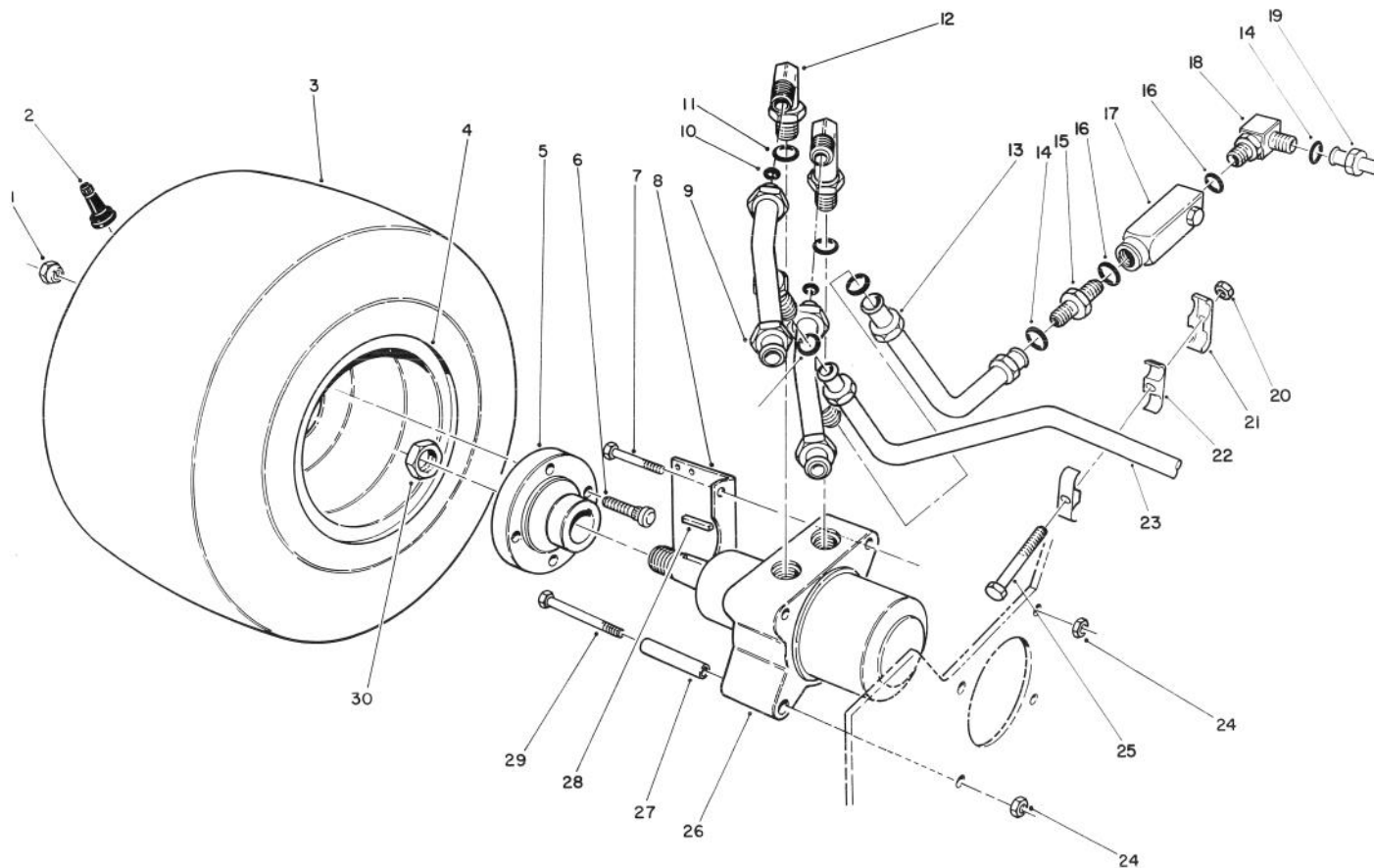
Ref. No.	Part No.	Description	No. Used	Ref. No.	Part No.	Description	No. Used
1	3296-16	Nut - Lock	2	19	2411-33	Joint - Ball (R.H.)	1
2	29-6150	Spring - Leaf	1	20	61-2610	Arm - Traction	1
3	29-6170	Spring - Extended Leaf	1	21	32121-6	Pin - Roll	1
4	51-3150	Shim - Spring Arm	1	22	32121-4	Pin - Roll	1
5	29-6120	Plate - Pump	1	23	3249-11	Screw - Mach. Rd. Hd.	2
6	3234-4	Screw - Hex. Washer Hd.	2	24	29-6162	Switch - Micro	1
7	3296-4	Nut - Lock	2	25	46-8810	Stop - Spring	1
8	2411-35	Joint - Ball (L.H.)	1	26	32121-24	Pin - Roll	1
9	61-2940	Lever - Pump	1	27	3254-9	Washer - Lock	2
10	3220-20	Nut - Jam (L.H.)	1	28	3217-16	Nut - Lock	2
11	32121-45	Pin - Roll	1	29	11-9760	Screw - Hex Hd. Self Tap	3
12	49-6440	Pedal - Fwd.	1	30	322-17	Screw - Cap Hex Hd.	1
13	49-6470	Pad - Pedal Fwd.	1	31	3255-7	Washer - Lock	3
14	61-2570	Traction Pedal Assembly	1	32	3210-7	Screw - Cap Hex. Hd.	1
15	61-2620	Rod - Link	1	33	3296-29	Nut - Lock	1
16	62-5030	Pedal - Reverse	1	34	251-259	Bearing - Ball	1
17	49-6430	Pad - Pedal Reverse	1				
18	3220-2	Nut - Jam (R.H.)	2				



L.H. FRONT WHEEL ASSEMBLY

Ref. No.	Part No.	Description	No. Used
1	237-30	O-Ring	2
2	340-89	Fitting - 45° Elbow (Incl. Ref. #1 & 3)	2
3	237-80	O-Ring	2
4	66-5291	Motor - Hydraulic (Incl. Ref. #7)	1
5	62-5110	Bracket - Brake Spring	1
6	325-11	Screw - Cap Hex. Hd.	2
7	65-4640	Key - Square	1
8	10-6830	Stud - Drive	4

Ref. No.	Part No.	Description	No. Used
9	10-6870	Hub - Wheel	1
10	231-127	Tire	1
11	217-60	Rim - Wheel	1
12	242-50	Nut - Lug	4
13	232-27	Stem - Valve	1
14	26-3790	Nut - Lock	1
15	325-22	Screw - Cap Hex. Hd.	2
16	61-3890	Spacer - Brake	2
17	3296-23	Nut - Lock	4

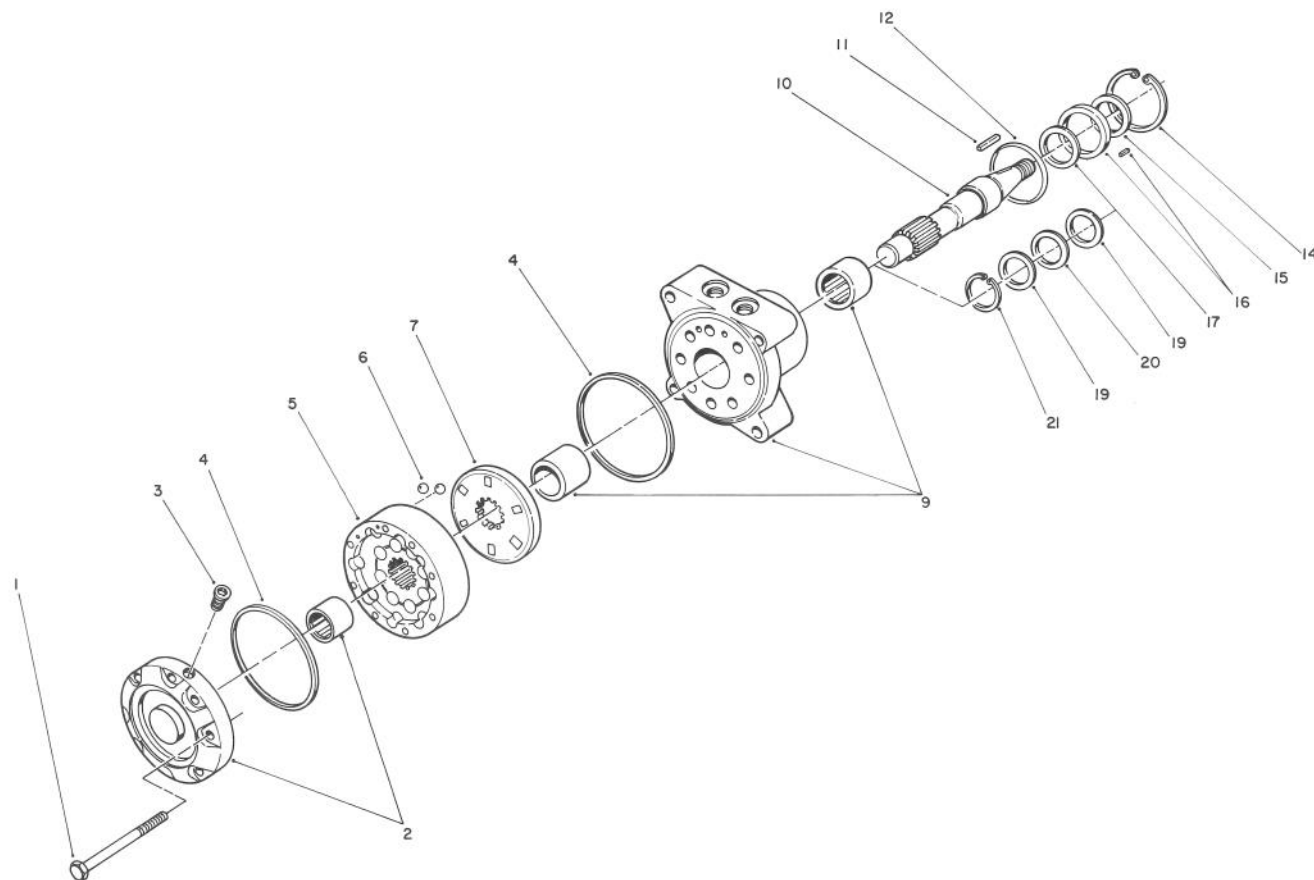


T-0889-89

R.H. FRONT WHEEL ASSEMBLY

Ref. No.	Part No.	Description	No. Used
1	242-50	Nut - Lug	4
2	232-27	Stem - Valve	1
3	231-127	Tire	1
4	217-60	Rim - Wheel	1
5	10-6870	Hub - Wheel	1
6	10-6830	Stud - Drive	4
7	325-11	Screw - Cap Hex Hd.	2
8	62-5110	Bracket - Brake Spring	1
9	71-0870	Tee - Tube Assembly (Incl. Ref. # 14)	2
10	237-30	O-Ring	2
11	237-80	O-Ring	2
12	340-89	Fitting - Elbow (Incl. Ref. # 10 & 11)	2
13	71-0880	Tube Assembly	1
14	237-30	O-Ring	4
15	340-5	Fitting (Incl. Ref. # 14 & 16)	1

Ref. No.	Part No.	Description	No. Used
16	237-42	O-Ring	2
17	71-2960	Valve - Flow Control	1
18	340-5	Fitting (Incl. Ref. # 14 & 16)	1
19	71-0850	Tube Assembly	1
20	32128-14	Flange Locknut	1
21	2412-116	Cover - Clamp	1
22	2412-115	Clamp - Double	1
23	71-0910	Tube Assembly	1
24	3296-23	Locknut	4
25	321-20	Screw - Cap Hex Hd.	1
26	66-5291	Motor - Hydraulic (Incl. Ref. # 28)	1
27	61-3890	Spacer - Brake	2
28	65-4640	Key - Square	1
29	325-22	Screw - Cap Hex Hd.	2
30	26-3790	Nut - Lock	1



T-0274

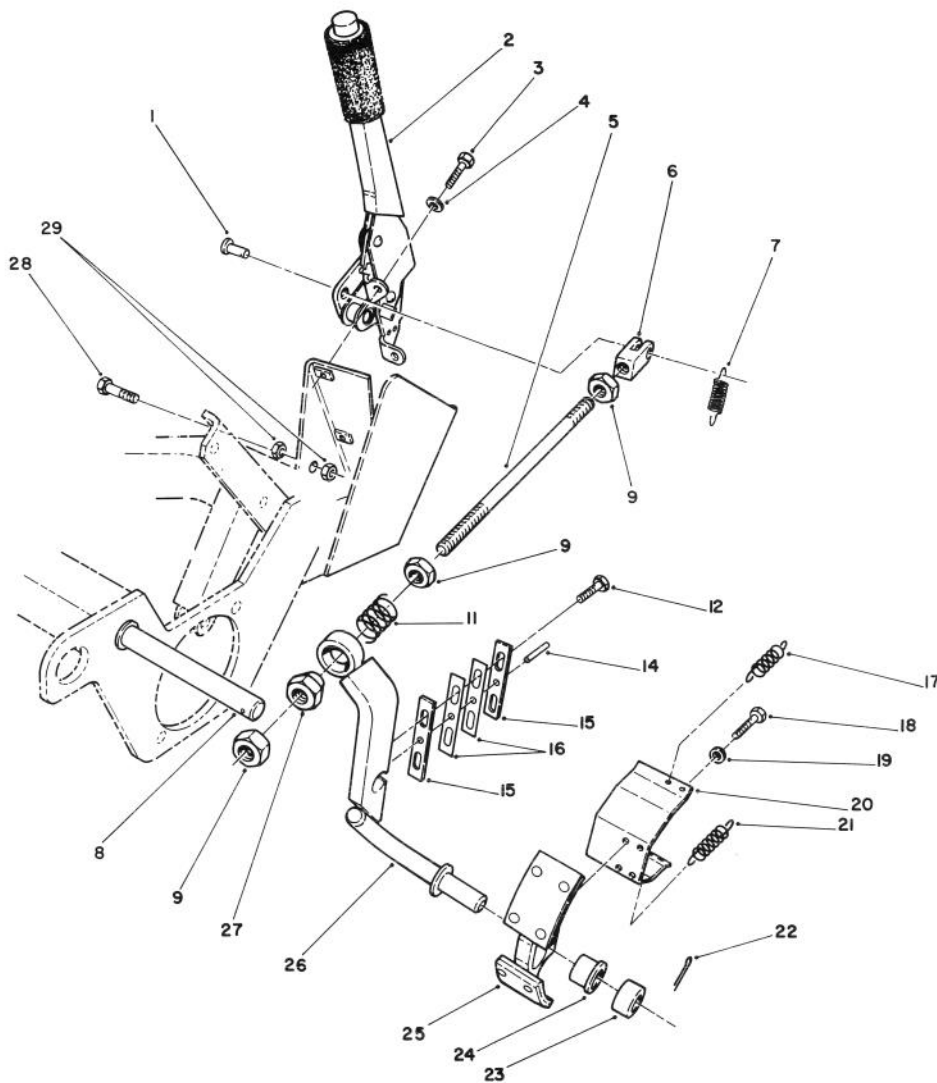
HYDRAULIC DRIVE MOTOR NO. 66-5291

Ref. No.	Part No.	Description	No. Used
1	65-4580	Screw - Cap Hex. Hd.	8
2	65-4680	Cover & Bearing Assembly	1
3	65-4560	Plug - Hex. (Hollow)	1
4	65-4570	Seal - Square Ring	2
5	66-6110	IGR Assembly	1
6	65-4550	Valve - Check Ball	2
7	68-9790	Plate - Valve	1
9	65-4670	Body & Bearing Assembly	1
10	65-4660	Shaft	1
11	65-4640	Key - Square	1
12	65-4620	Seal - O-Ring	1

Ref. No.	Part No.	Description	No. Used
14	65-4500	Seal - Snap Ring	1
†15		Seal - Dust	1
†16		Retainer/Pin	1
†17		Seal - Lip	1
*	65-4690	Seal/Retainer Assembly (Incl. Ref. #15-17)	1
19	65-4600	Washer - Thrust	2
20	65-4610	Bearing - Thrust	1
21	65-4590	Ring - Snap	1
*	65-4700	Body Seal Kit (Incl. Ref. #4, 12 & 15-17)	1

*Not Illustrated

† Not available from Toro as a replacement part.



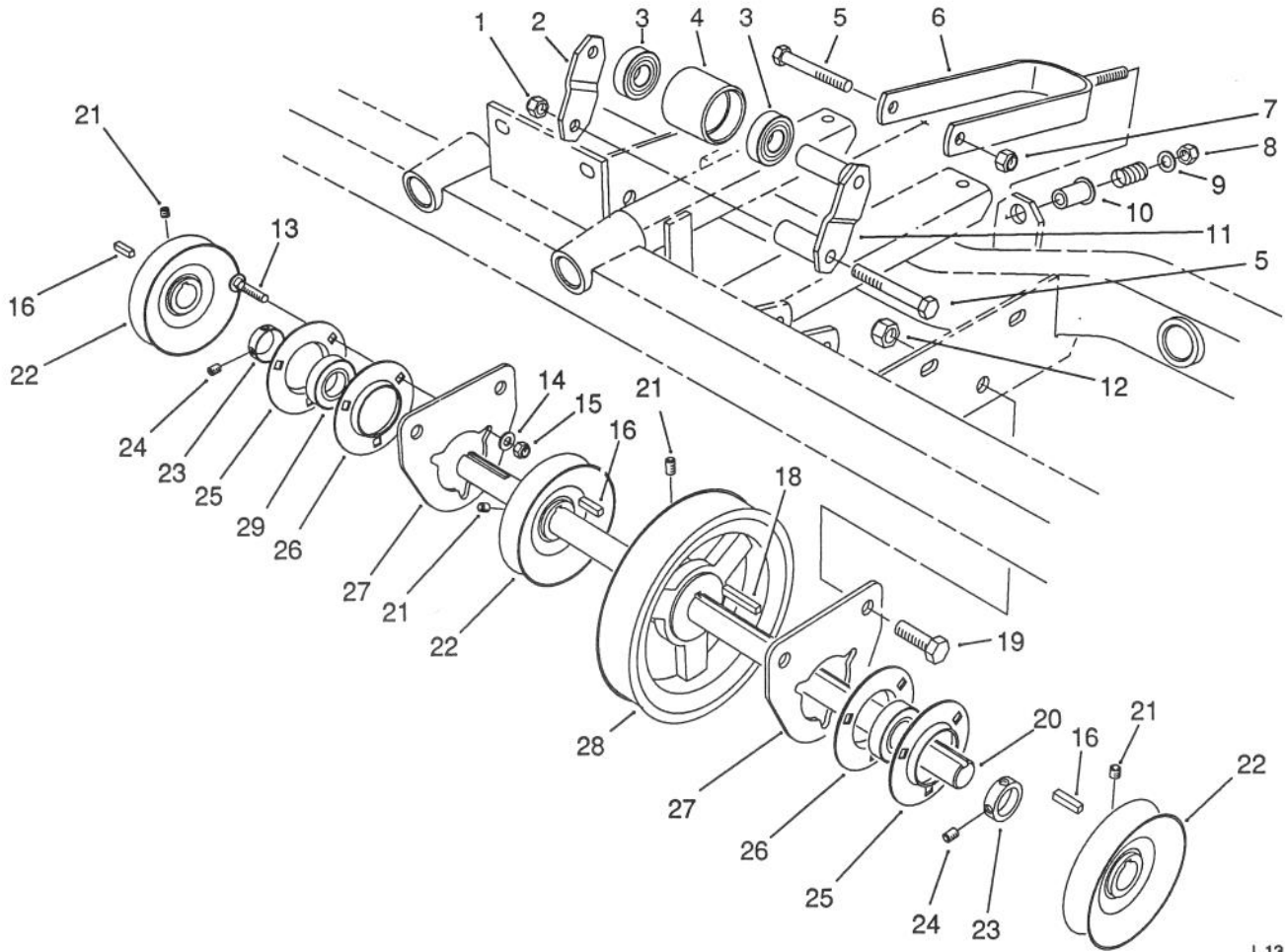
T-0275

BRAKE ASSEMBLY

Ref. No.	Part No.	Description	No. Used
1	283-64	Pin - Clevis	1
2	61-3990	Brake Handle Assembly	1
3	322-5	Screw - Cap Hex. Hd.	2
4	3253-4	Washer - Lock	2
5	62-4910	Rod - Brake	1
6	62-4920	Clevis - Brake	1
7	5-7290	Spring - Extension	1
8	62-5060	Shaft - Brake	1
9	3220-5	Nut - Jam	3
11	62-5160	Spring - Compression	1
12	3234-4	Screw - Cap Hex. Hd.	2
14	32121-6	Pin - Roll	2
15	61-3980	Plate - Slide (Outer)	2
16	62-7130	Plate - Slide (Inner)	2

Ref. No.	Part No.	Description	No. Used
17	62-7110	Spring - Extension (Upper)	4
18	32144-1	Screw - Slot Hex.	4
19	3254-1	Washer - Lock	4
20	62-5100	Bracket - Return Spring	2
21	62-5170	Spring - Extension (Lower)	4
22	3272-17	Pin - Cotter	2
23	62-7160	Spacer	2
24	256-291	Bushing - Flange	2
25	62-4930	Shoe - Brake	2
26	61-3950	Arm - Brake (L.H.)	1
*	61-3910	Arm - Brake (R.H.)	1
27	242-50	Nut - Lug	1
28	322-17	Screw - Cap Hex. Hd.	1
29	32128-20	Nut - Lock	2

*Not Illustrated



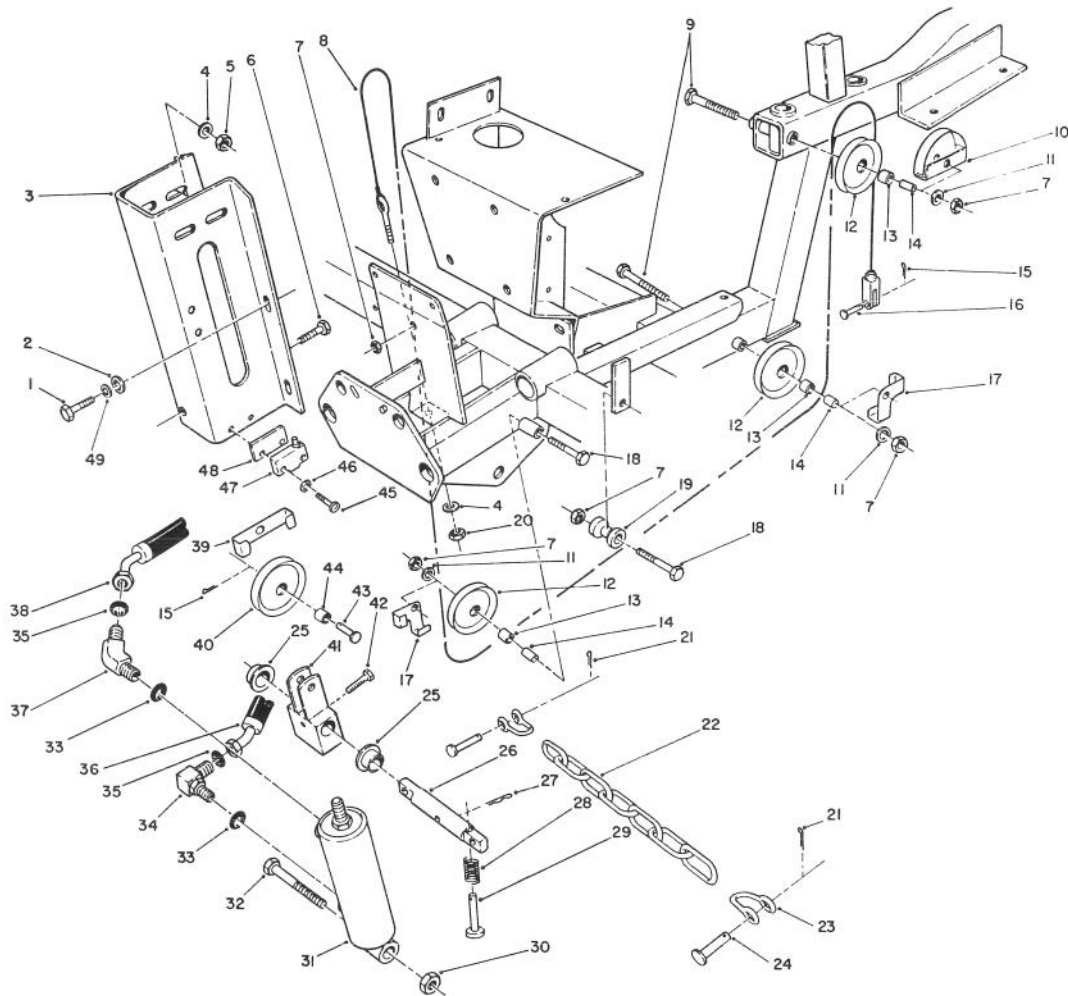
I.13.914.5

JACKSHAFT ASSEMBLY

Ref. No.	Part No.	Description	No. Used
1	3296-39	Nut - Lock	2
2	67-7911	Strap - Idler Bracket	1
3	38-7820	Bearing - Idler	2
4	67-7750	Pulley - Idler	1
5	323-15	Screw - Cap Hex. Hd.	2
6	67-7890	Belt Tensioner W.A.	1
7	3296-59	Nut - Lock	1
8	3256-24	Washer - Flat	1
9	20-6110	Spring - Compression	1
10	256-300	Bushing - Flange	1
11	67-7870	Idler Bracket W.A.	1
12	3296-23	Nut - Lock	4
13	3230-10	Bolt - Carriage	6
14	3256-23	Washer - Flat	6
15	3296-29	Nut - Lock	6
16	5-7280	Key - Square (Short)	3

Ref. No.	Part No.	Description	No. Used
18	67-7490	Key - Square (Long)	1
19	325-4	Screw - Cap Hex. Hd.	4
20	61-2340	Shaft - Drive	1
21	3242-4	Screw - Set	8
22	61-0140	Pulley - Jackshaft	3
23	251-77	Collar - Locking (Incl. Ref. #24)	2
24	3245-35	Screw - Set	4
25	251-319	Flange - Bearing (Lube)	2
*	302-11	Fitting - Grease	2
26	251-229	Flange - Bearing	2
27	61-2350	Mount - Bearing	2
28	61-0070	Pulley - Poly V	1
29	71-1360	Bearing	2
*	13-1279	Idler Pulley Assembly (Incl. Ref. #3, 4 & 11)	1

*Not Illustrated

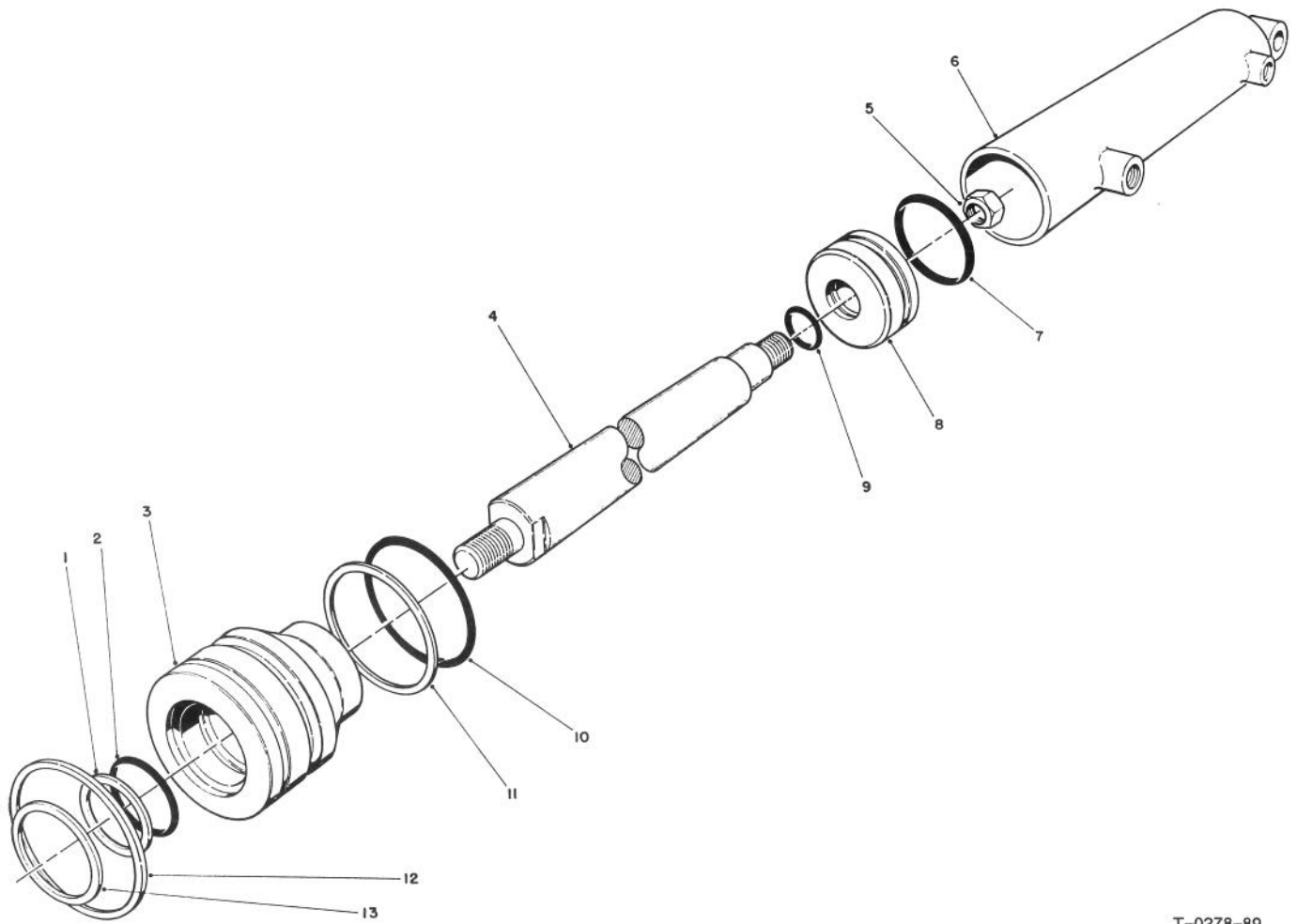


T-0277-89-A

CUTTING UNIT LIFT ASSEMBLY

Ref. No.	Part No.	Description	No. Used
1	11-0590	Screw - Thread Forming	4
2	3256-24	Washer - Flat	4
3	61-2420	Bracket - Cyl. Support	1
4	3256-23	Washer - Flat	5
5	3296-29	Nut - Lock	4
6	323-6	Screw - Cap Hex Hd.	1
7	3296-39	Nut - Lock	5
8	61-3260	Cable - Lift	1
9	323-16	Screw - Cap Hex Hd.	2
10	61-3240	Keeper - Cable	1
11	3256-4	Washer - Flat	3
12	61-3210	Pulley - Cable (Incl. Ref. # 14)	3
13	256-1	Bushing	3
14	61-3230	Spacer - Pulley	3
15	3272-6	Pin - Cotter	2
16	283-1	Pin - Clevis	1
17	5-2656	Keeper - Cable	2
18	323-13	Screw - Cap Hex Hd.	2
19	61-1940	Roller - Cable	1
20	3296-4	Nut - Lock	3
21	3272-11	Pin - Cotter	4
22	61-3830	Chain - Lift	2
23	282-4	Shackle - Chain	4
24	283-6	Pin - Clevis	4
25	256-289	Bushing - Flange	2

Ref. No.	Part No.	Description	No. Used
26	72-4190	Pin - Cylinder	1
27	3272-4	Pin - Cotter	1
28	71-1370	Spring	1
29	71-1380	Pin - Spring Actuator	1
30	17-0980	Nut - Lock	1
31	61-0090	Cylinder - Lift	1
32	3214-13	Screw - Cap Hex Hd.	1
33	237-42	O-Ring	2
34	340-77	Fitting - Elbow (Incl. Ref. # 33 & 35)	1
35	237-22	O-Ring	2
36	61-2490	Hydraulic Hose Assembly	1
37	340-87	Fitting - Elbow (Incl. Ref. # 33 & 35)	1
38	61-2500	Hydraulic Hose Assembly	1
39	5-2655	Keeper - Cable	1
40	5-2653	Pulley - Cable (Incl. Ref. # 44)	1
41	61-2430	Hub - Lift	1
42	3234-4	Screw - Hex Washer Hd.	1
43	283-42	Pin Clevis	1
44	256-2	Bushing	1
45	3250-35	Screw - Pan Hd. Mach.	2
46	3254-9	Washer - Lock	2
47	29-6162	Switch - Micro	1
48	61-2990	Spacer - Switch	1



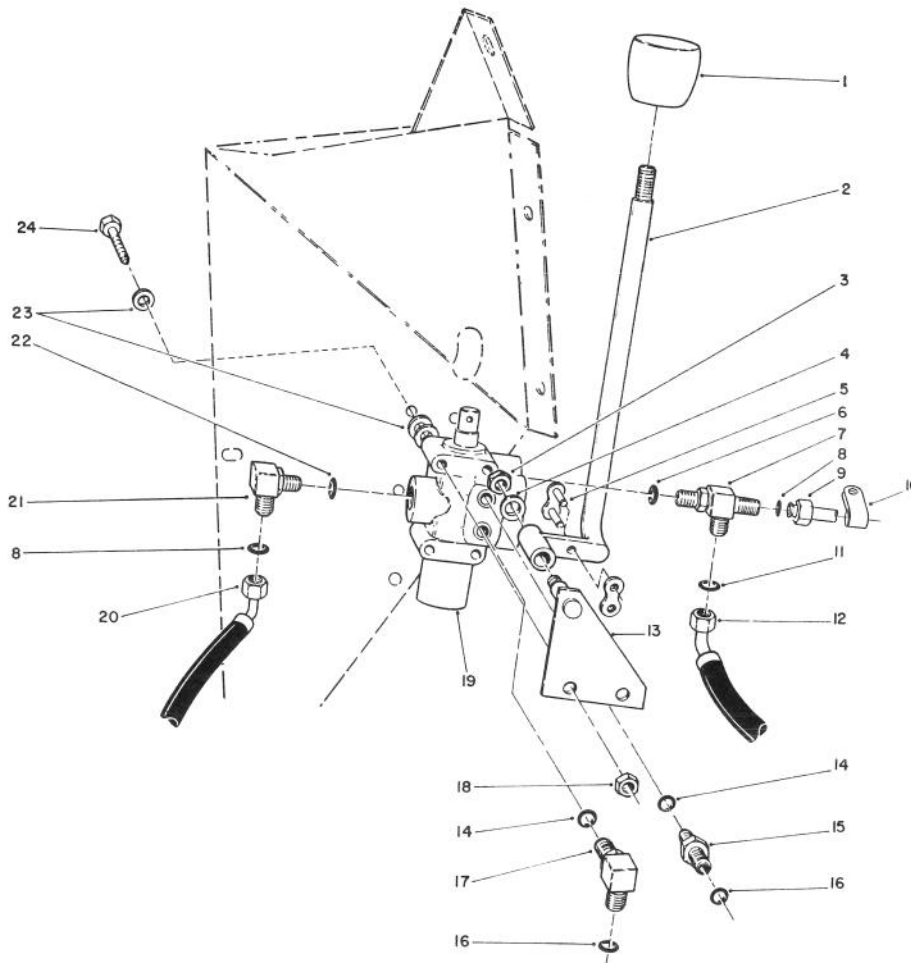
T-0278-89

HYDRAULIC CYLINDER NO. 61-0090

Ref. No.	Part No.	Description	No. Used
1		Washer - Backup	1
2		O-Ring	1
3	61-3110	Head	1
4	61-3100	Shaft	1
5	32152-6	Nut - Lock	1
6		Barrel	1
7		Uniring	1
8	61-1880	Piston	1

Ref. No.	Part No.	Description	No. Used
9		O-Ring	1
10		O-Ring	1
11		Washer - Backup	1
12	61-3120	Ring - Retaining	1
13		Seal - Dust	1
*	61-3200	Repair Kit (Incl. Ref. #1-2, 7, 9-11 & 13)	1

*Not Illustrated

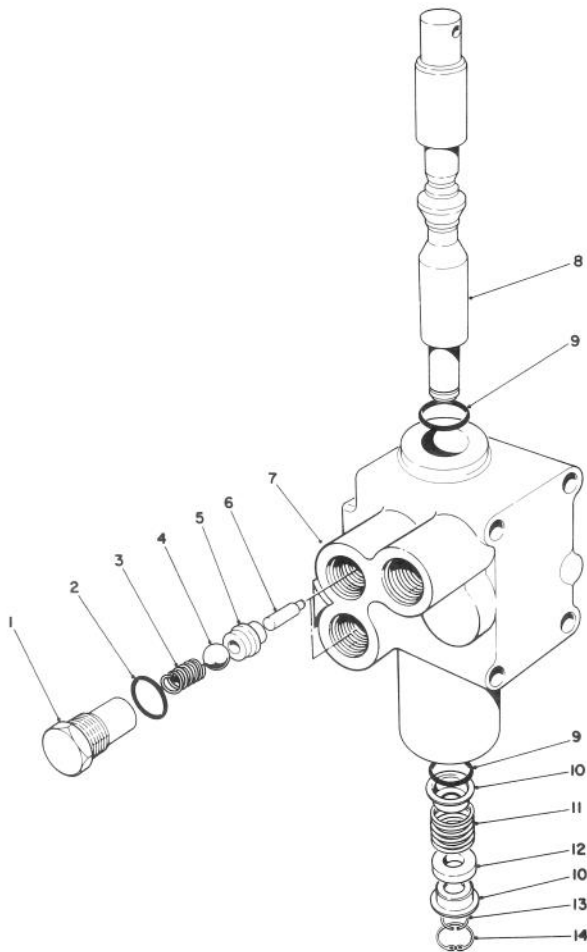


T-0890-89

CUTTING UNIT LIFT CONTROL VALVE ASSEMBLY

Ref. No.	Part No.	Description	No. Used
1	233-37	Knob	1
2	61-2750	Lever - Valve	1
3	3296-39	Nut - Lock	1
4	3256-24	Washer	1
5	2710-16	Link - Chain	1
6	237-42	O-Ring	1
7	71-0770	Fitting (Incl. Ref. # 6, 8, & 11)	1
8	237-22	O-Ring	2
9	71-0860	Tube Assembly	1
10	2412-113	Clamp - R	1
11	237-30	O'Ring	1
12	61-2520	Hydraulic Hose Assy. (Up)	1
13	61-2720	Bracket - Lever	1

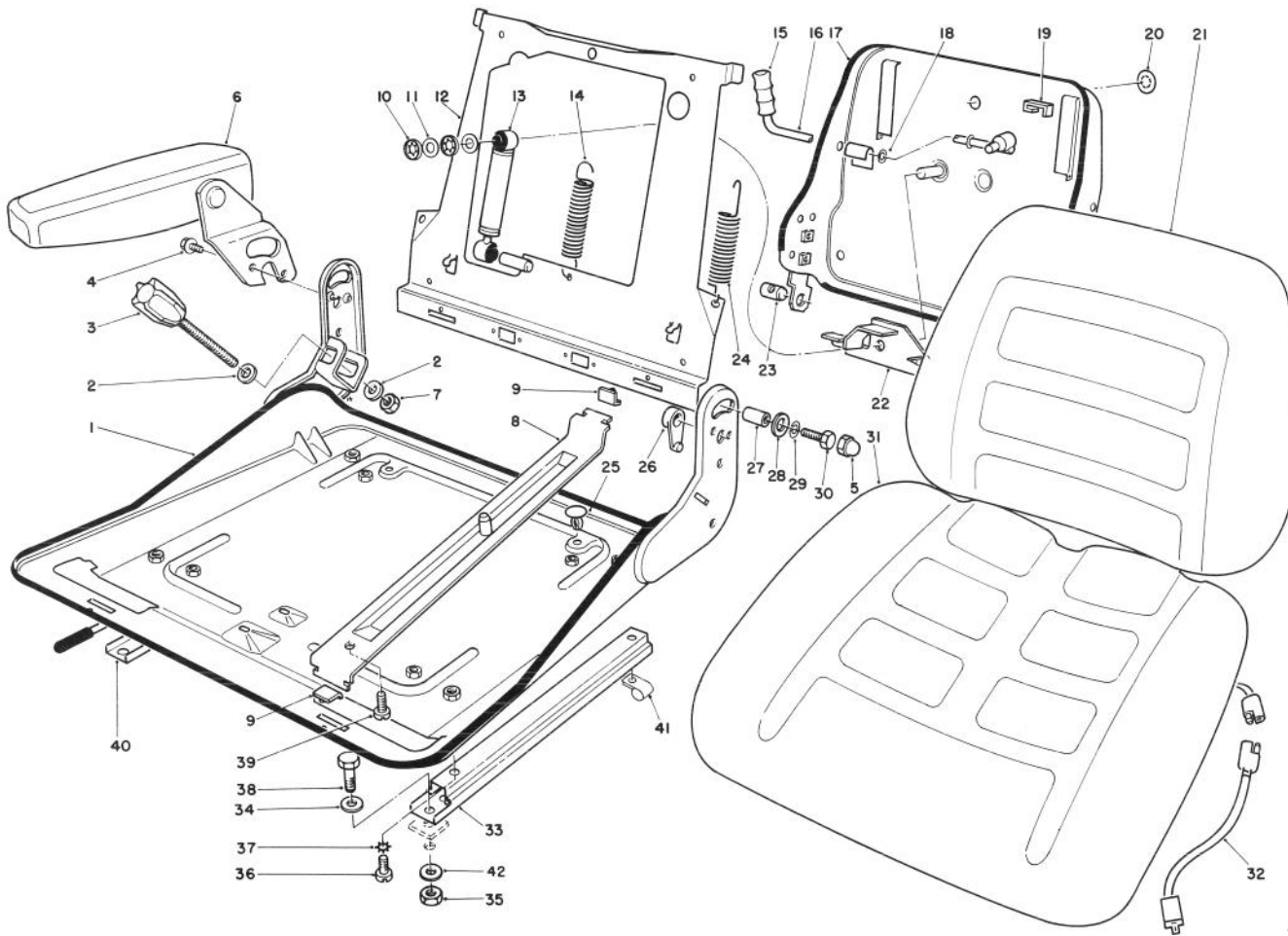
Ref. No.	Part No.	Description	No. Used
14	237-78	O-Ring	2
15	340-88	Fitting - Straight (Incl. Ref. # 14 & 16)	1
16	237-21	O-Ring	2
17	340-97	Fitting - 90° Elbow (Incl. Ref. # 14 & 16)	1
18	3296-16	Nut - Lock	3
19	43-1950	Valve - Hydraulic	1
20	61-2510	Hydraulic Hose Assy. (Low)	1
21	340-99	Fitting - 90° Elbow (Incl. Ref. # 8 & 22)	1
22	237-79	O-Ring	1
23	3256-22	Washer - Flat	9
24	321-23	Screw - Cap Hex. Hd.	3



T-0280

CONTROL VALVE NO. 43-1950

Ref. No.	Part No.	Description	No. Used	Ref. No.	Part No.	Description	No. Used
1	22-8330	Plug	2	8	22-8420	Spool	1
2	237-42	O-Ring	2	9	22-8500	O-Ring	2
3	22-8340	Spring	2	10	22-8380	Retainer - Spring	2
4	22-8350	Ball	2	11	22-8410	Spring	1
5	22-8370	Seat - Check Valve	2	12	23-3030	Spacer	1
6	22-8360	Pin - Cam	2	13	22-8480	Snap-Ring - Spool	1
7		Body	1	14	22-8490	Snap-Ring	1

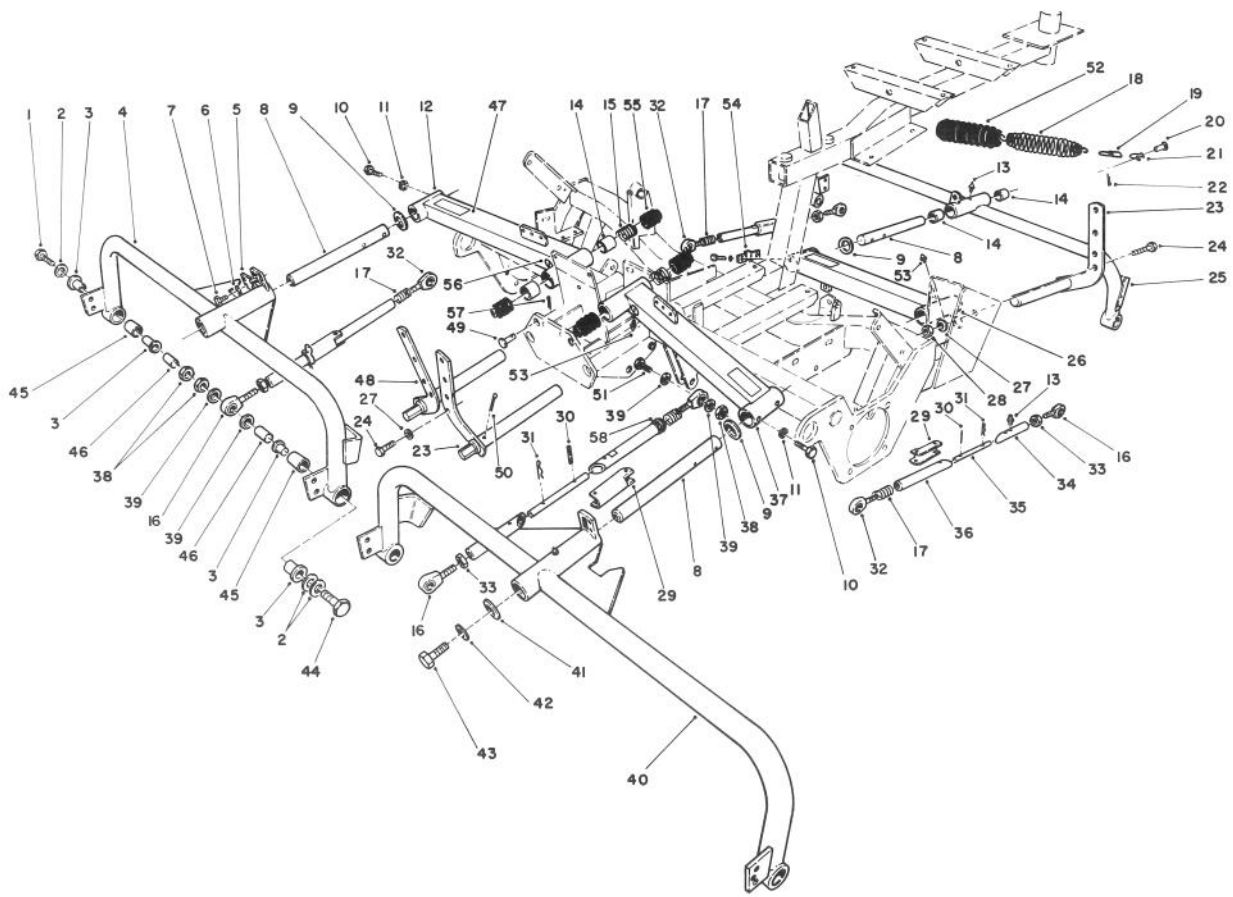


T-0281

SEAT ASSEMBLY MODEL NO. 30756 (Optional)

Ref. No.	Part No.	Description	No. Used	Ref. No.	Part No.	Description	No. Used
1	56-3810	Platform - Seat	1	23	56-4170	Pin - Clevis	1
2	56-3880	Washer - Flat	2	24	56-4060	Spring - Extension	1
3	56-3870	Knob - Adjustment	1	25	56-4190	Cap - Seat	2
4	56-3850	Screw - Hex. Hd. Machine	2	26	56-3900	Spacer - Arm L.H.	1
5	56-3960	Cover - Screw	4	*	56-3910	Spacer - Arm R.H.	1
6	55-4331	Arm Rest Assembly R.H.	1	27	56-3920	Bushing - Sleeve	4
*	55-4330	Arm Rest Assembly L.H.	1	28	56-3930	Washer - Flat	4
7	56-3890	Nut - Hex.	1	29	56-3940	Washer - Lock	4
8	56-3970	Carrier - Seat	2	30	56-3950	Screw - Cap Hex. Hd.	4
9	56-3980	Clip - Rail	4	31	56-3790	Cushion - Seat Bottom	1
10	56-4080	Clamp - Axle	2	32	55-8380	Seat Wire Assembly	1
11	56-4090	Washer - Flat	2	33	56-4000	Bottom Rail Assembly L.H.	1
12	56-4040	Plate - Back	1	34	3256-23	Washer - Flat	4
13	62-7670	Shock Absorber - Seat	1	35	3296-29	Nut - Lock	4
14	56-4050	Spring - Extension	1	36	56-4020	Screw - Machine	4
15		Grip - Cover	1	37	56-4030	Washer - Lock	4
16	56-4150	Lever - Handle (Incl. Ref. #15)	1	38	322-5	Screw - Cap Hex. Hd.	4
17	56-3820	Cover - Seat Back	1	39	56-3990	Screw - Machine	2
18	56-4160	Washer - Flat	2	40	56-4010	Bottom Rail Assembly R.H.	1
19	56-4130	Bumper	2	41	2412-67	Clamp - R	1
20	56-4120	Cover	1	42	3256-3	Washer - Flat	4
21	56-3800	Cushion - Seat Back	1	*	55-8420	Seat Assembly (Incl. Ref. #1-3, 5, 7-31, 33, 36-37 & 39-40)	1
22	56-4100	Bracket - Lever	1				

*Not Illustrated

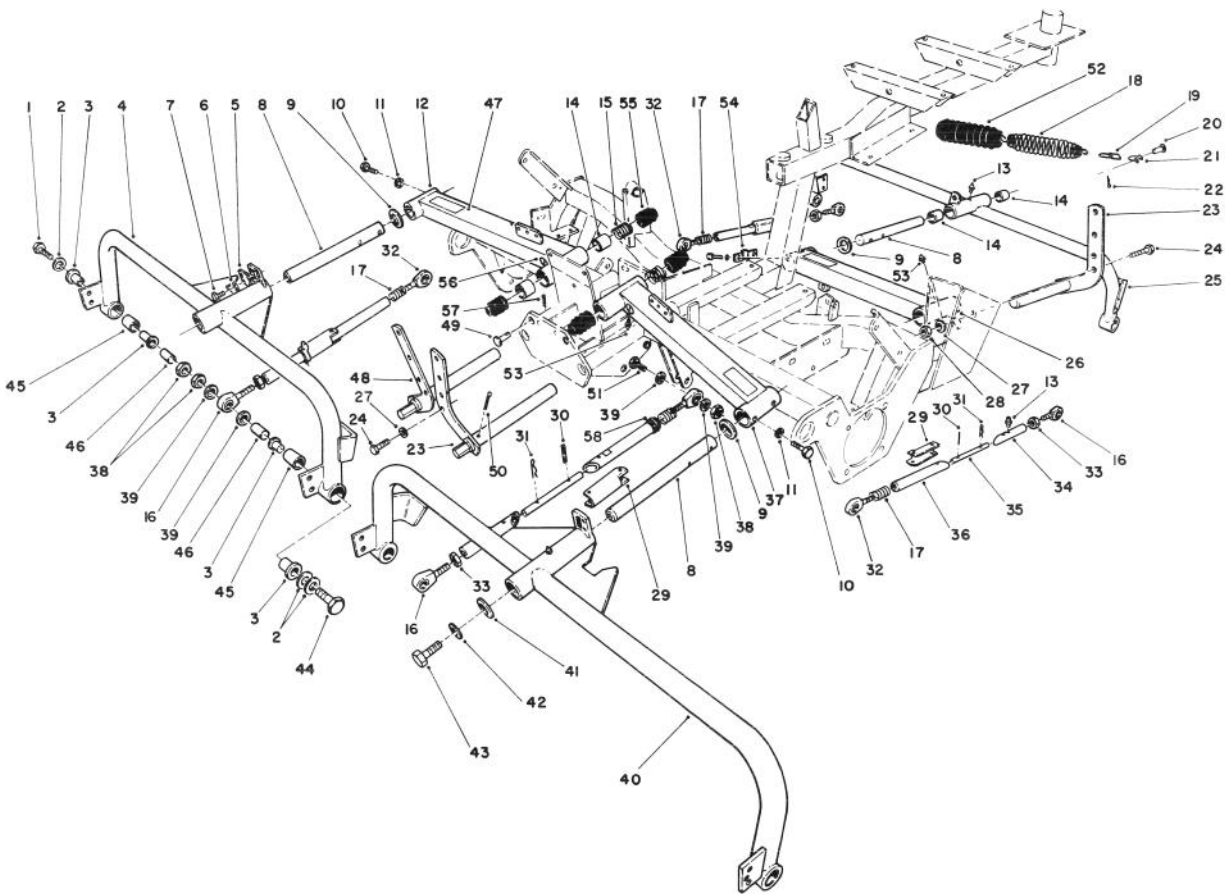


T-0282

CUTTING UNIT CARRIER FRAME ASSEMBLY

Ref. No.	Part No.	Description	No. Used	Ref. No.	Part No.	Description	No. Used
†1	325-10	Screw - Cap Hex. Hd.	2	21	282-4	Shackle - Spring	3
†2	3256-26	Washer - Flat	6	22	3272-11	Pin - Cotter	3
†3	256-285	Bushing - Flange	12	23	61-2930	Pivot Shaft L.H.	2
†4	61-0860	Carrier Frame R.H. (Incl. Ref. #13, 14 & 45)	1	24	323-7	Screw - Cap Hex. Hd.	3
5	61-3600	Tab - Lift	3	†25	61-0870	Carrier Frame - Rear (Incl. Ref. #13, 14 & 45)	1
6	3253-3	Washer - Lock	6	26	61-2890	Lift Arm - Rear (Incl. Ref. #14 & 53)	1
7	321-2	Screw - Cap Hex. Hd.	6	27	3256-4	Washer - Flat	5
8	61-3000	Rod - Pivot	3	28	3296-39	Nut - Lock	6
9	256-115	Washer - Thrust	3	29	61-3510	Handle - Belt Tension	4
10	322-4	Screw - Cap Hex. Hd.	6	30	32121-6	Pin - Roll	4
11	3253-4	Washer - Lock	6	31	68-8170	Hairpin - Cotter	4
12	61-2830	Lift Arm - R.H. (Incl. Ref. #14 & 53)	1	32	61-3540	Balljoint - L.H. Thread	4
†13	302-5	Fitting - Grease (Use 4 on 5 blade cutting units)	7	33	3220-5	Nut - Jam	4
14	3-0348	Bushing	12	34	61-3480	Rod - Belt Tension (Short)	4
15	61-3270	Spring - Compression	2	35	61-3500	Rod - Belt Tension	4
16	61-3530	Balljoint - R.H. Thread	4	36	61-3490	Rod - Belt Tension (Long)	4
17	62-5160	Spring - Compression	4	37	61-2880	Lift Arm - L.H. (Incl. Ref. #14 & 53)	1
18	5-0743	Spring - Extension	3	38	3296-45	Nut - Lock	10
19	62-7300	Chain - Adjustment	1	39	61-0640	Spacer - Balljoint	16
20	283-6	Pin - Clevis	3				

† For 8 & 11 blade cutting units only.

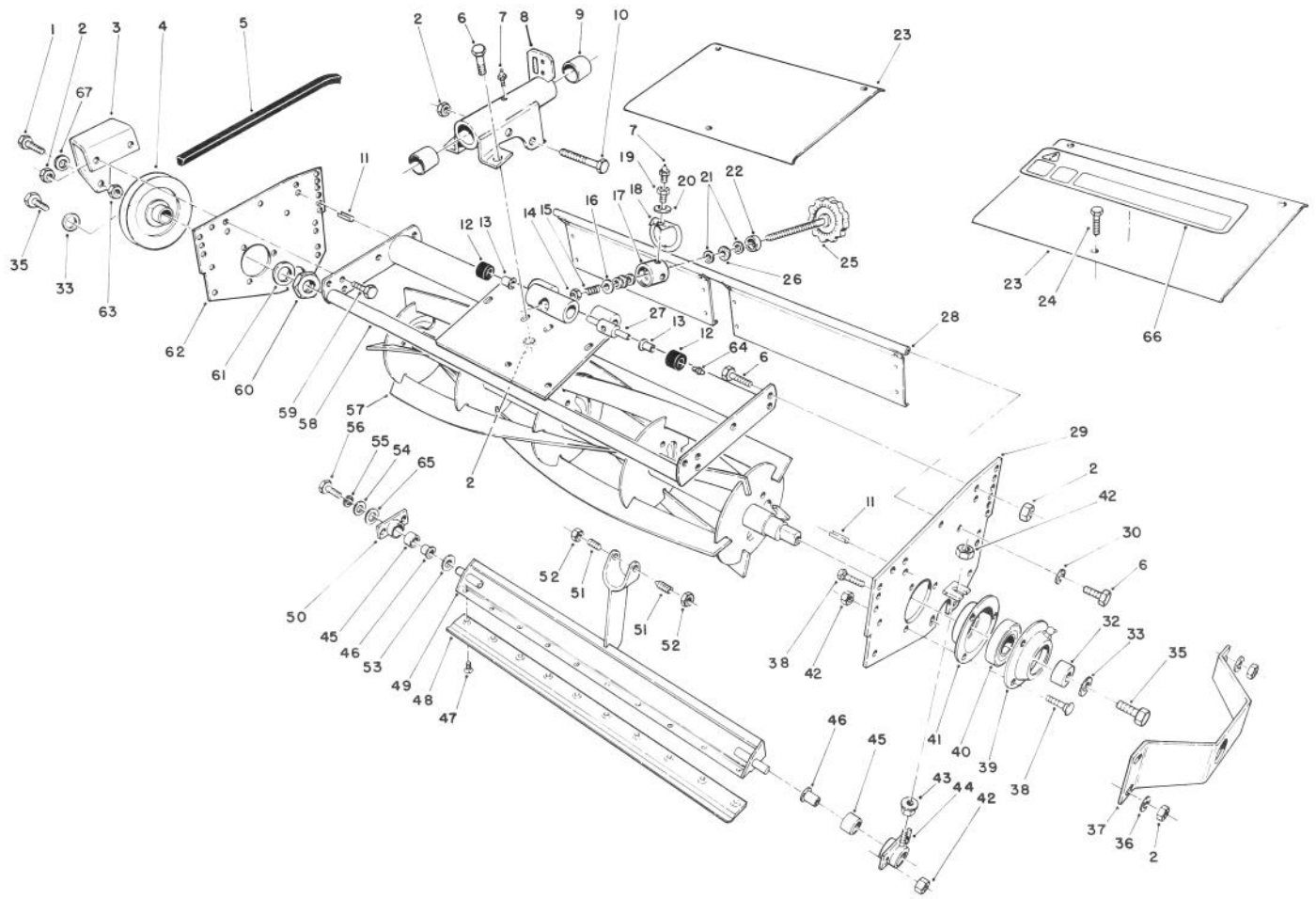


T-0282

CUTTING UNIT CARRIER FRAME ASSEMBLY (Continued)

Ref. No.	Part No.	Description	No. Used	Ref. No.	Part No.	Description	No. Used
†40	61-0880	Carrier Frame L.H. (Incl. Ref. #13, 14 & 45)	1	49	283-8	Pin - Clevis	3
41	3256-6	Washer - Flat	3	50	3272-17	Pin - Cotter	3
42	3253-7	Washer - Lock	3	51	325-8	Screw - Cap Hex. Hd.	4
43	325-4	Screw - Cap Hex. Hd.	3	52	62-7240	Sleeve - Spring	1
†44	325-14	Screw - Cap Hex. Hd.	4	53	302-60	Fitting - Grease	3
†45	61-0710	Bushing Assy.	6	54	61-3820	Retainer - Cable	1
†46	61-1370	Spacer	6	55	62-7250	Boot	6
47	61-3610	Decal - Warning	3	56	58-6520	Decal - Grease Fitting	3
48	61-2900	Pivot Shaft R.H.	1	57	3290-322	Hairpin - Cotter	3
				58	68-7190	Sleeve - Vinyl	4

† For 8 & 11 blade cutting units only.



T-0283

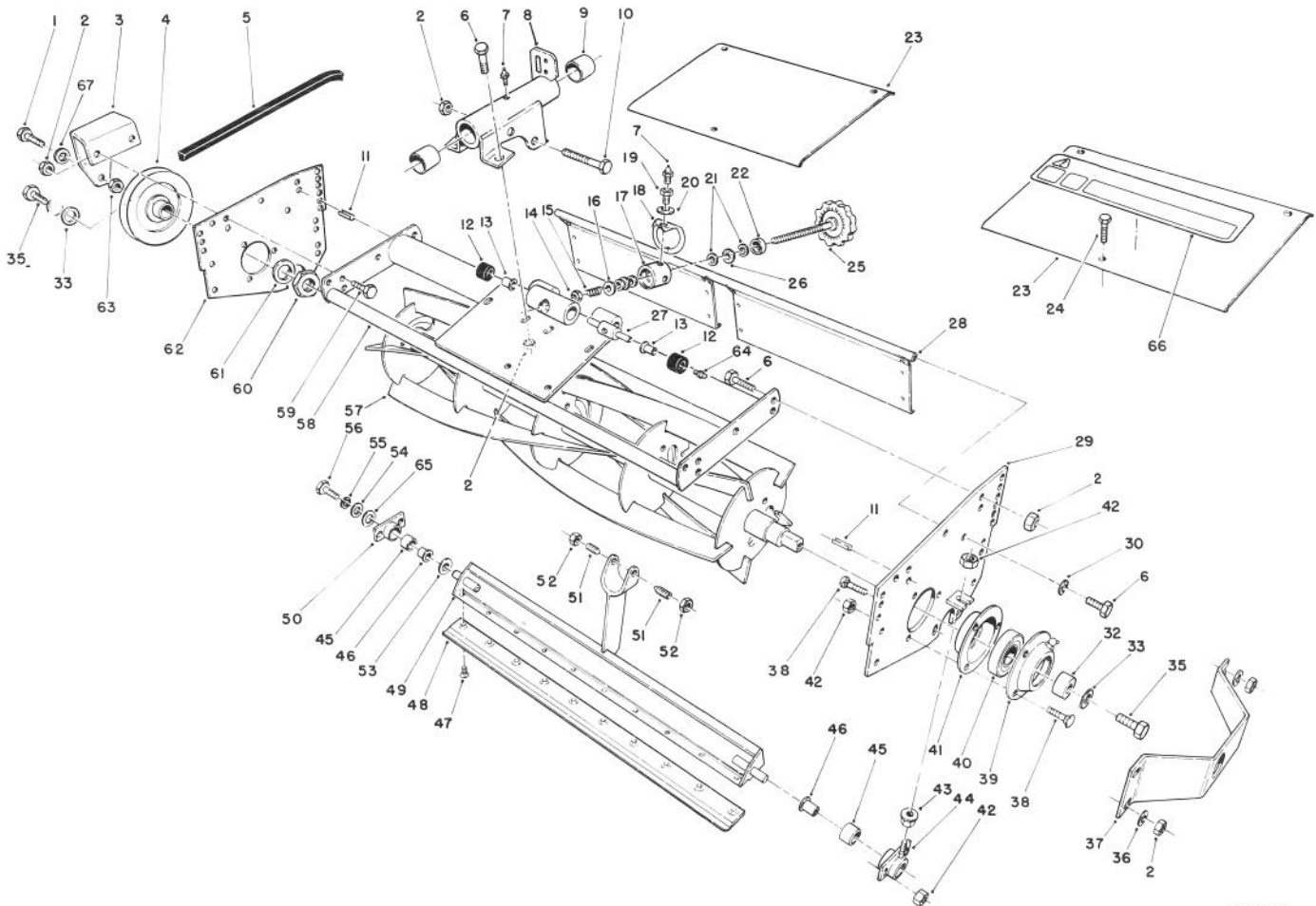
5 BLADE CUTTING UNIT REEL ASSEMBLY

Ref. No.	Part No.	Description	No. Used
1	325-7	Screw - Cap Hex.Hd.	1
2	3296-39	Nut - Lock (Use 14 nuts on rear cutting unit)	12
3	61-0900	Bracket - Tensioner (Use 2 brackets on rear cutting unit)	1
4	61-0160	Pulley - Reel, 5 Blade	1
5	61-3380	V-Belt	1
6	323-6	Screw - Cap Hex. Hd.	8
7	302-5	Fitting - Grease	2
8	61-1050	Front Support - L.H. (Incl. Ref. #7 & 9)	1
*	61-3660	Front Support - R.H. (Incl. Ref. #7 & 9)	1
*	61-0670	Rear Support - (Incl. Ref. #7 & 9)	1
9	3-0348	Bushing	2
10	323-12	Screw - Cap Hex. Hd.	1
11	32121-36	Pin - Roll	4
12	62-5510	Rubber Bushing Assembly	2
13	52-2890	Bushing - Flanged Nylon	2
14	3296-62	Nut - Lock	1
15	57-5270	Spring - Compression	1

Ref. No.	Part No.	Description	No. Used
16	29-8870	Washer - Flat	1
17	52-2980	Pivot - Single Point Adjust	1
18	52-3000	Arm - Spring	1
19	52-2990	Capscrew - Spring Retainer	1
20	3256-25	Washer - Flat	1
21	257-5	Washer - Thrust	4
22	253-84	Seal	1
23	61-0550	Shield - Top	2
24	32144-10	Screw - Cap Hex. Hd.	6
25	61-1070	Handle - Assy	1
26	257-6	Bearing - Thrust	2
27	57-5260	Pin - S.P.A.	1
28	61-1130	Rear Grass Guard	1
29	61-0940	Sideplate - Adjust	1
30	3253-5	Washer - Lock	2
32	61-0500	Spacer - Bearing	1
33	67-9760	Washer - Flat	2
35	3211-4	Screw - Cap Hex. Hd.	2
36	3256-3	Washer - Flat	5
37	61-0610	Guard - Side (Used on front cutting units only)	1
38	3230-20	Bolt - Carriage	10
39	251-319	Flange - Bearing (Lube)	2
*	302-11	Fitting - Grease	2

NOTE: Front left cutting unit shown.

*Not Illustrated



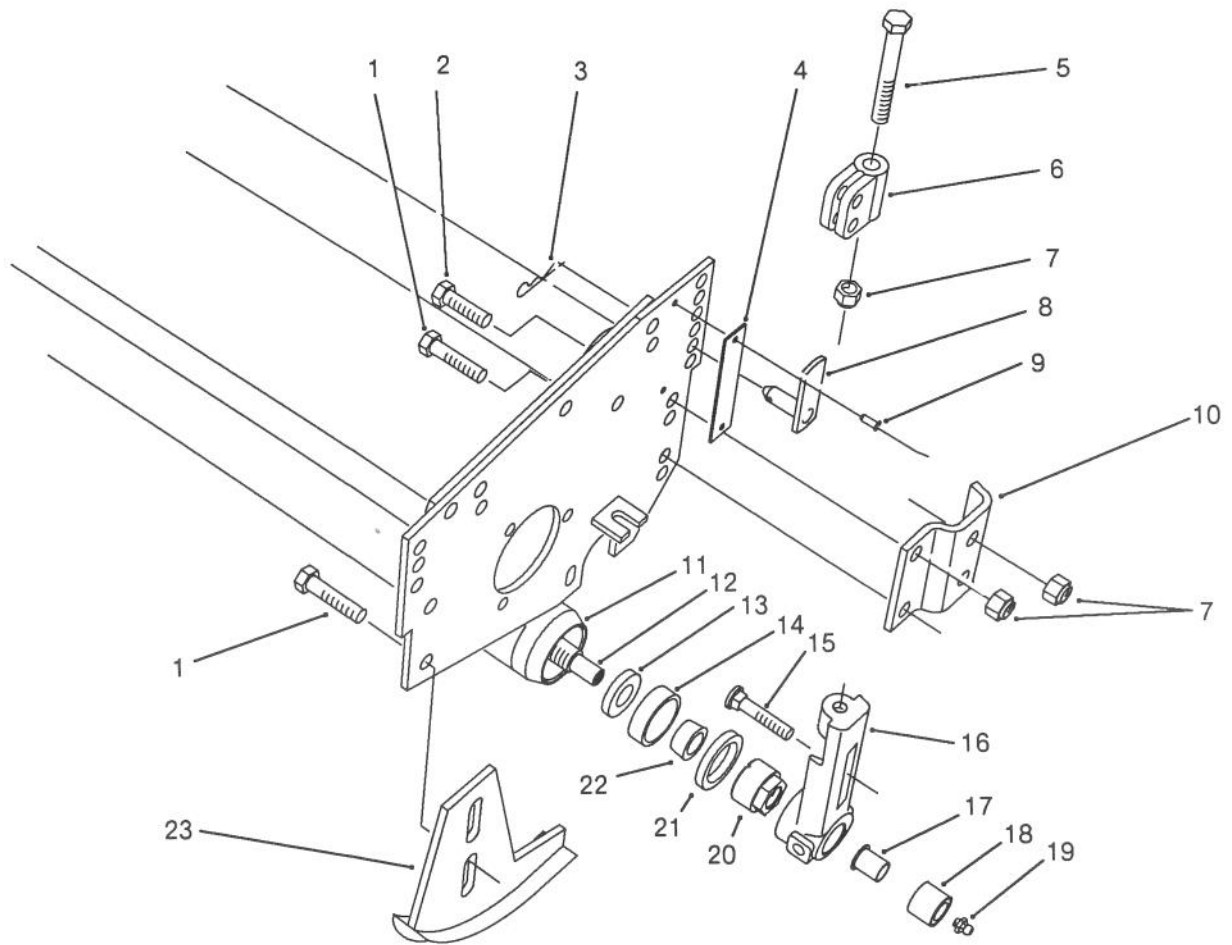
T-0283

5 BLADE CUTTING UNIT REEL ASSEMBLY (Continued)

Ref. No.	Part No.	Description	No. Used	Ref. No.	Part No.	Description	No. Used
40	251-331	Bearing	2	57	12-7079	Reel Assy. - 5 Blade (Left C.U.)	1
41	251-229	Flange - Bearing	2	*	12-7059	Reel Assy. - 5 Blade (Right & Rear C.U.)	1
42	3296-29	Nut - Lock	11	58	61-0660	Reel Frame	1
43	3217-6	Nut	1	59	323-7	Screw - Cap Hex. Hd. (Use 4 screws on rear cutting unit)	2
44	61-0970	Housing - Bedbar Adj.	1	60	67-5840	Nut - Jam	1
45	56-9510	Bushing Assy	2	61	27-1850	Washer	1
46	56-9520	Bushing - Flanged	2	62	61-1320	Sideplate - Reel	1
47	57-4910	Screw - Special	10	63	3296-45	Nut - Lock	1
48	62-5180	Bedknife - 7 In. Reel	1	64	302-18	Fitting - Grease	1
49	61-1210	Bedbar	1	65	62-7120	Spacer	1
50	61-1010	Bedbar Housing	1	66	62-5070	Decal - Warning	1
51	57-5190	Screw - Adjustment	2	67	3256-26	Washer - Flat (Use 2 washers on rear cutting unit)	1
52	3218-18	Nut - Jam	2				
53	61-1950	Washer - Bedbar	1				
54	3256-56	Washer - Flat	1				
55	3253-4	Washer - Lock	1				
56	322-3	Screw - Cap Hex. Hd.	1				

NOTE: Front left cutting unit shown.

*Not Illustrated

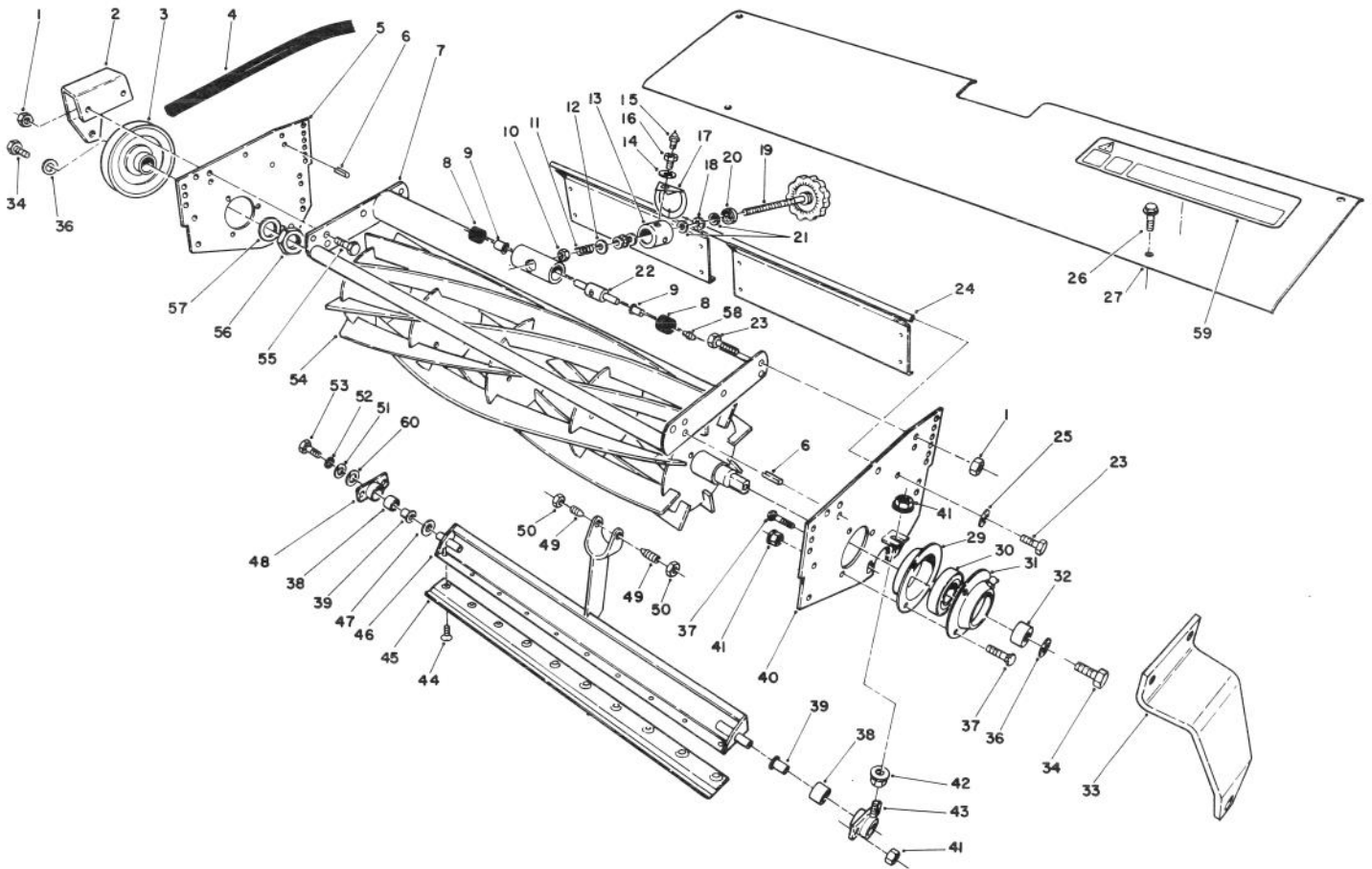


T-0284

5 BLADE CUTTING UNIT ROLLER ASSEMBLY

Ref. No.	Part No.	Description	No. Used	Ref. No.	Part No.	Description	No. Used
1	323-7	Screw - Cap Hex. Hd.	3	14	254-79	Cup - Bearing	2
2	323-6	Screw - Cap Hex. Hd.	5	15	3231-2	Bolt - Carriage	2
3	3290-467	Cotter - Hairpin	2	16	61-0430	Bracket - Rear	2
4	61-3810	Plate - HOC	2	17	56-9520	Bushing - Flanged	1
5	61-0790	Screw - Cap Hex. Hd.	2	18	56-9510	Bushing Assy.	2
6	61-0420	Support - HOC	2	19	302-5	Fitting - Grease	2
7	3296-39	Nut - Lock	9	20	61-0370	Nut - Adjustment	2
8	61-0630	Pin - HOC	2	21	253-153	Seal - Outer	2
9	3290-55	Rivet - Pop	4	22	254-78	Cone - Bearing	2
10	61-0910	Bracket - Angle	2	23	70-1410	Skid Kit (Incl. Ref. #1)	2
11	61-0380	Cap - Roller	2	*	61-0410	Roller Assembly (Incl. Ref. #11-14, 19-22)	1
12	61-0400	Shaft - Roller	1				
13	253-152	Seal - Inner	2				

NOTE: Front left cutting unit shown.
*Not Illustrated



T-0285

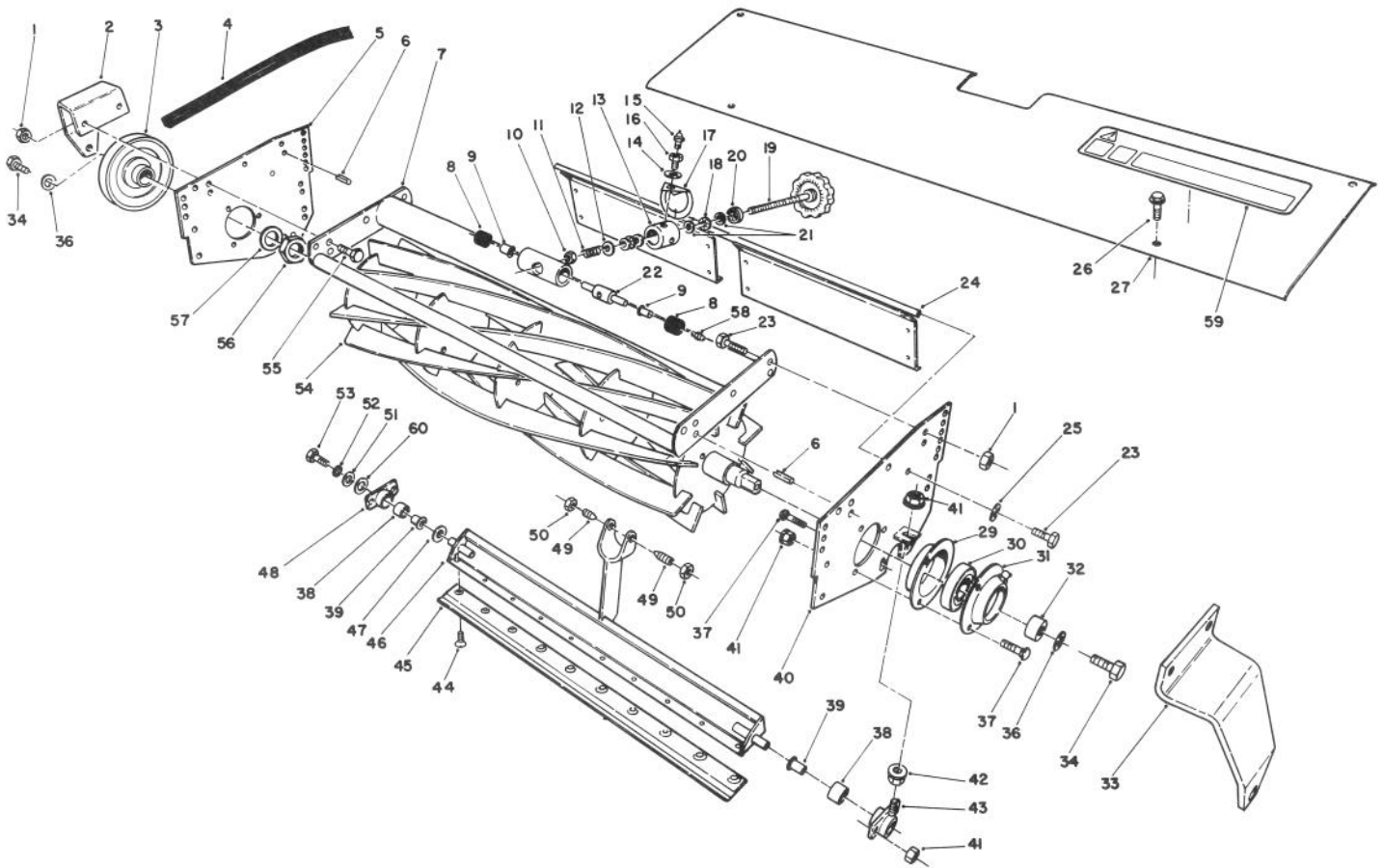
8 & 11 BLADE CUTTING UNIT REEL ASSEMBLY

Ref. No.	Part No.	Description	No. Used
1	3296-39	Nut - Lock	8
2	61-0900	Bracket - Tensioner/Carrier (Use 2 Brackets on Rear Cutting Unit)	1
3	61-0150	Pulley - Reel	1
4	61-3380	V-Belt - Reel	1
5	61-1320	Sideplate	1
6	32121-36	Pin - Roll	4
7	61-0930	Frame - Reel	1
8	62-5510	Rubber Bushing Assembly	2
9	52-2890	Bushing - Flanged (Nylon)	2
10	3296-62	Nut - Lock	1
11	57-5270	Spring - Compression	1
12	29-8870	Washer	1
13	52-2980	Pivot - Single Point Adjust	1
14	3256-25	Washer - Flat	1
15	302-5	Fitting - Grease	1
16	52-2990	Capscrew - Spring Retainer	1
17	52-3000	Arm - Spring	1
18	257-6	Bearing - Thrust	2
19	61-1070	Handle - Assy.	1
20	253-84	Seal	1
21	257-5	Washer - Thrust	4

Ref. No.	Part No.	Description	No. Used
22	57-5260	Pin - S.P.A.	1
23	323-6	Screw - Cap Hex. Hd.	6
24	61-1130	Rear Grass Guard	1
25	3253-5	Washer - Lock	2
26	32144-10	Screw - Hex. Washer Hd.	4
27	61-0560	Shield - Top	1
29	251-229	Flange - Bearing	2
30	251-331	Bearing	2
31	251-319	Flange - Bearing (Lube)	2
*	302-11	Fitting - Grease	2
32	61-0500	Spacer - Reel	1
33	61-0890	Bracket - Carrier	1
34	3211-4	Screw - Cap Hex. Hd.	2
36	67-9760	Washer	2
37	3230-20	Bolt - Carriage	10
38	56-9510	Bushing Assy.	2
39	56-9520	Bushing - Flanged	2
40	61-0940	Sideplate - Adjust	1
41	3296-29	Nut - Lock	11
42	3217-6	Nut	1
43	61-0970	Housing - Bedbar Adj.	1
44	57-4910	Screw - Special	10

NOTE: Front left cutting unit shown.

*Not Illustrated



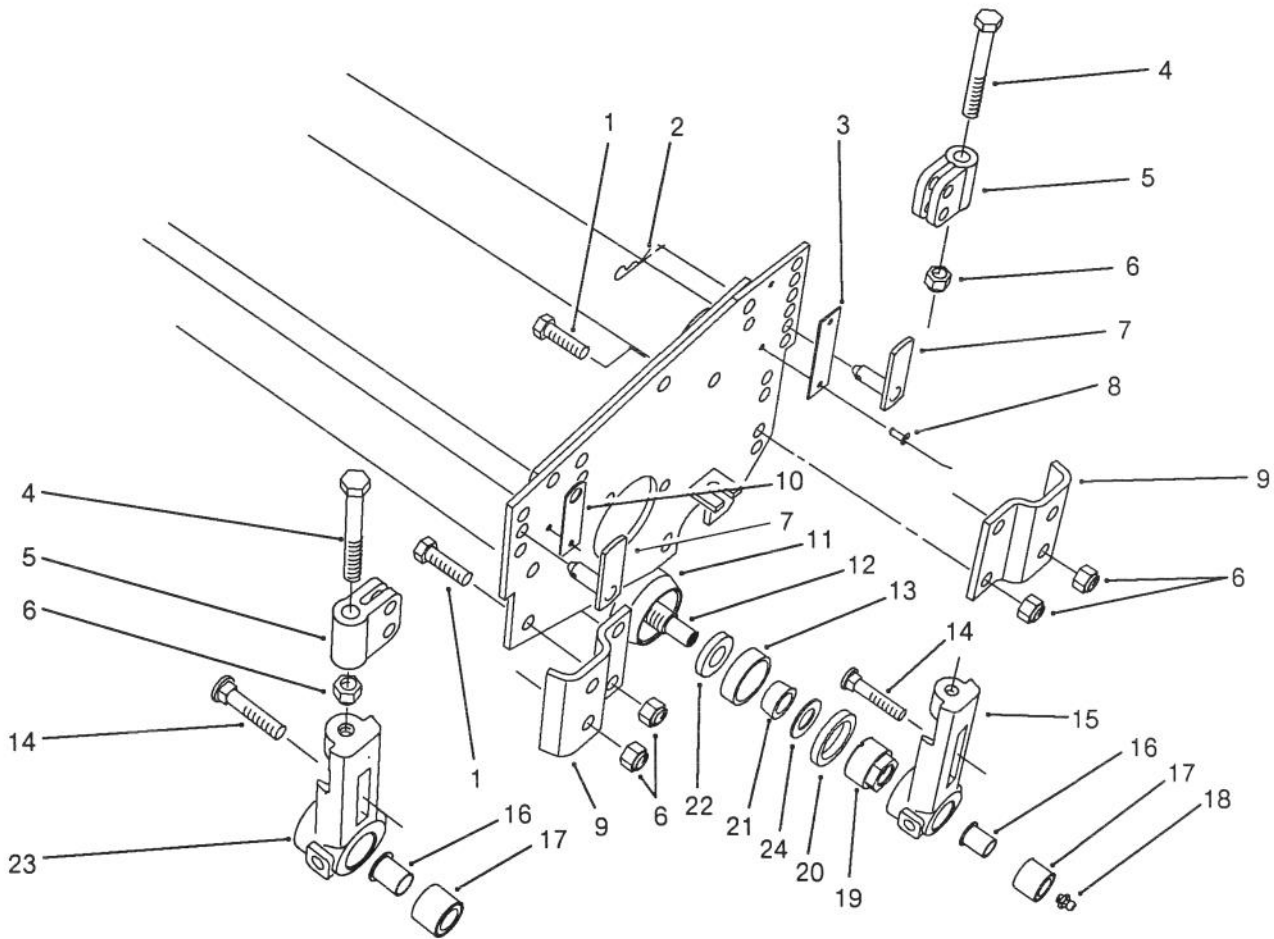
T-0285

8 & 11 BLADE CUTTING UNIT REEL ASSEMBLY (Continued)

Ref. No.	Part No.	Description	No. Used	Ref. No.	Part No.	Description	No. Used
45	62-5180	Bedknife - 7 In. Reel	1	54	12-7099	Reel Assy. - 8 Blade (Left C.U.)	1
46	61-1210	Bedbar	1	*	12-7089	Reel Assy. - 8 Blade (Right & Center C.U.)	1
47	61-1950	Washer - Bedbar	1	*	13-1709	Reel Assy. - 11 Blade (Left C.U.)	1
48	61-1010	Bedbar Housing	1	*	13-1699	Reel Assy. - 11 Blade (Right & Center C.U.)	1
49	57-5190	Screw - Adjustment	2	55	323-7	Screw - Cap Hex. Hd.	4
50	3218-18	Nut - Jam	2	56	67-5840	Nut - Jam	1
51	3256-56	Washer - Flat	1	57	27-1850	Washer	1
52	3253-4	Washer - Lock	1	58	302-18	Fitting - Grease	1
53	322-3	Screw - Cap Hex. Hd.	1	59	62-5070	Decal - Warning	1
				60	62-7120	Spacer	1

NOTE: Front cutting unit shown.

*Not Illustrated



T-0286

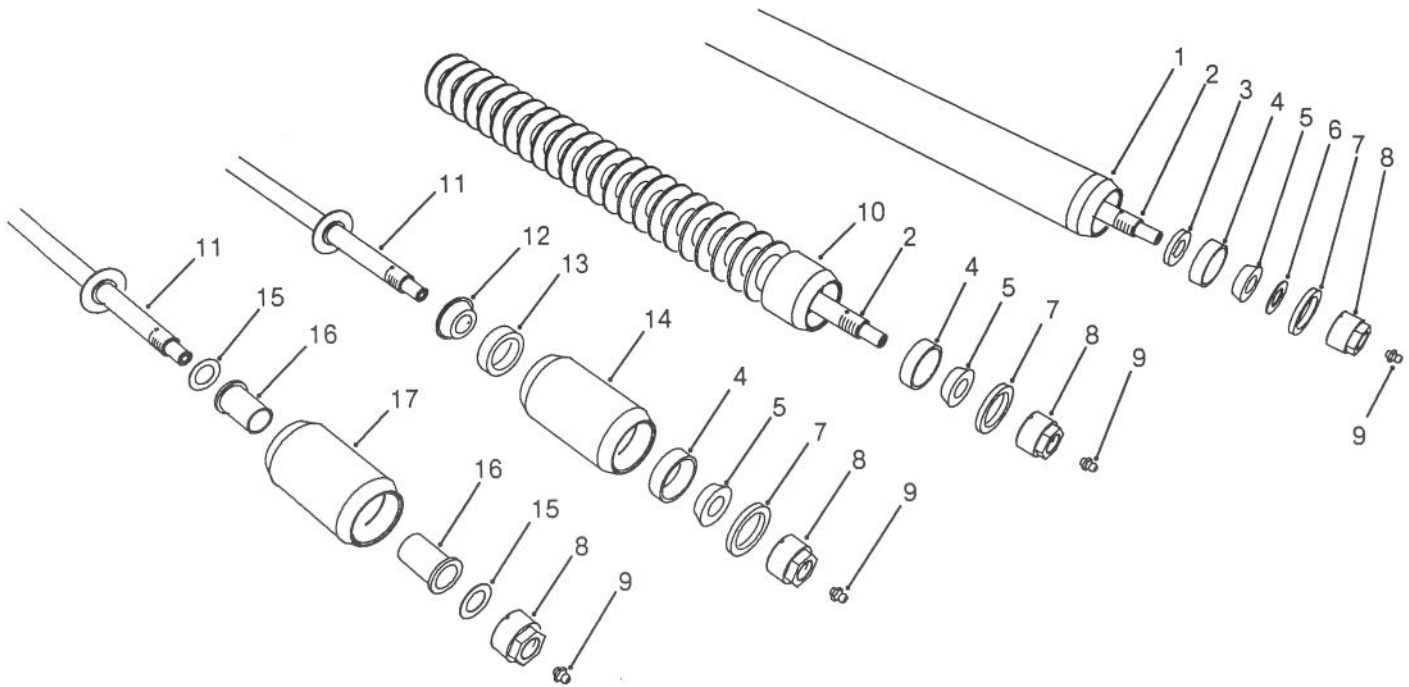
8 & 11 BLADE CUTTING UNIT ROLLER ASSEMBLY

Ref. No.	Part No.	Description	No. Used
1	323-6	Screw - Cap Hex. Hd.	8
2	3290-467	Cotter - Hairpin	4
3	61-3800	Plate - HOC Rear	2
4	61-0790	Screw - Cap Hex. Hd.	4
5	61-0420	Support - HOC	4
6	3296-39	Nut - Lock	16
7	61-0630	Pin - HOC	4
8	3290-55	Rivet - Pop	6
9	61-0910	Bracket - Angle	4
10	61-3790	Plate - HOC Front	2
11	61-0380	Cap - Roller	2
12	61-0400	Shaft - Roller	1
13	254-79	Cup - Bearing	2
14	3231-2	Bolt - Carriage	4

Ref. No.	Part No.	Description	No. Used
15	61-0430	Bracket - Rear	2
16	56-9520	Bushing - Flanged	2
17	56-9510	Bushing	4
18	302-5	Fitting - Grease	2
19	61-0370	Nut - Adjustment	2
20	253-153	Seal - Outer	2
21	254-78	Cone - Bearing	2
22	253-152	Seal - Inner	2
23	61-0440	Bracket - Front	2
24	62-7660	Washer - Shim (not used on all full roller assys.)	2
*	61-0410	Full Roller Assembly (Incl. Ref. #11-13, 18-22 & 24)	1

NOTE: Front left cutting unit shown.

*Not Illustrated

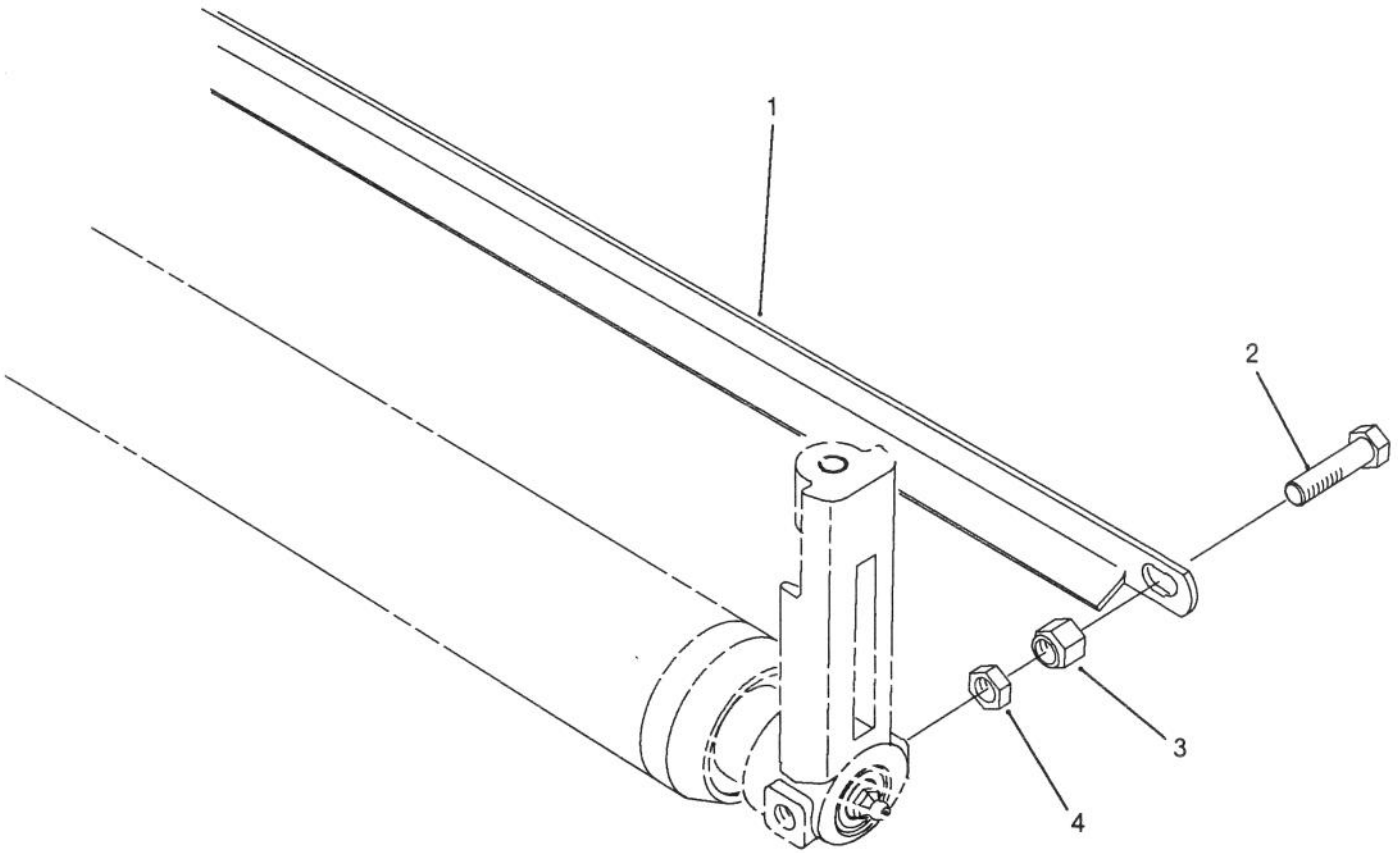


T-0287

CUTTING UNIT ROLLER OPTIONS

Ref. No.	Part No.	Description	No. Used	Ref. No.	Part No.	Description	No. Used
1	61-0380	Cap - Full Roller	2	*	61-0410	Full Roller Assy. (Incl. Ref. #1-9)	1
2	61-0400	Shaft - Full/Wiehle Roller	2	*	62-7410	Wiehle Roller Assy. (Incl. Ref. #2, 4-5 & 7-10)	1
3	253-152	Seal - Inner	2	*	62-4970	Sectional Roller Assy. (Incl. Ref. #4-5, 7-9 & 11-14)	1
4	254-79	Cup - Bearing (Outer)	6	*	63-5090	Anti-Scalp Roller Assy. (Incl. Ref. #8-9, 11 & 15-17)	1
5	254-78	Cone - Bearing (Outer)	6	*	03440	Full Roller Kit (Incl. 3 No. 61-0410)	1
6	62-7660	Washer - Shim (not used on all full roller assemblies)	2	*	03450	Wiehle Roller Kit (Incl. 3 No. 62-7410)	1
7	253-153	Seal - Outer	6	*	03445	Sectional Roller Kit (Incl. 3 No. 62-4970)	1
8	61-0370	Nut - Adjustment	8	*	03447	Anti-Scalp Roller Kit (Incl. 3 No. 63-5090)	1
9	302-5	Fitting - Grease	8				
10	63-5160	Wiehle Roller Weld Assy.	1				
11	62-4990	Shaft - Sectional Roller	2				
12	252-107	Cone - Bearing (Inner)	2				
13	252-106	Cup - Bearing (Inner)	2				
14	62-4980	Roller - Sectional	2				
15	3-6498	Washer - Thrust	4				
16	256-117	Bushing - Flanged	4				
17	63-5060	Roller - Anti-Scalp	2				

*Not Illustrated

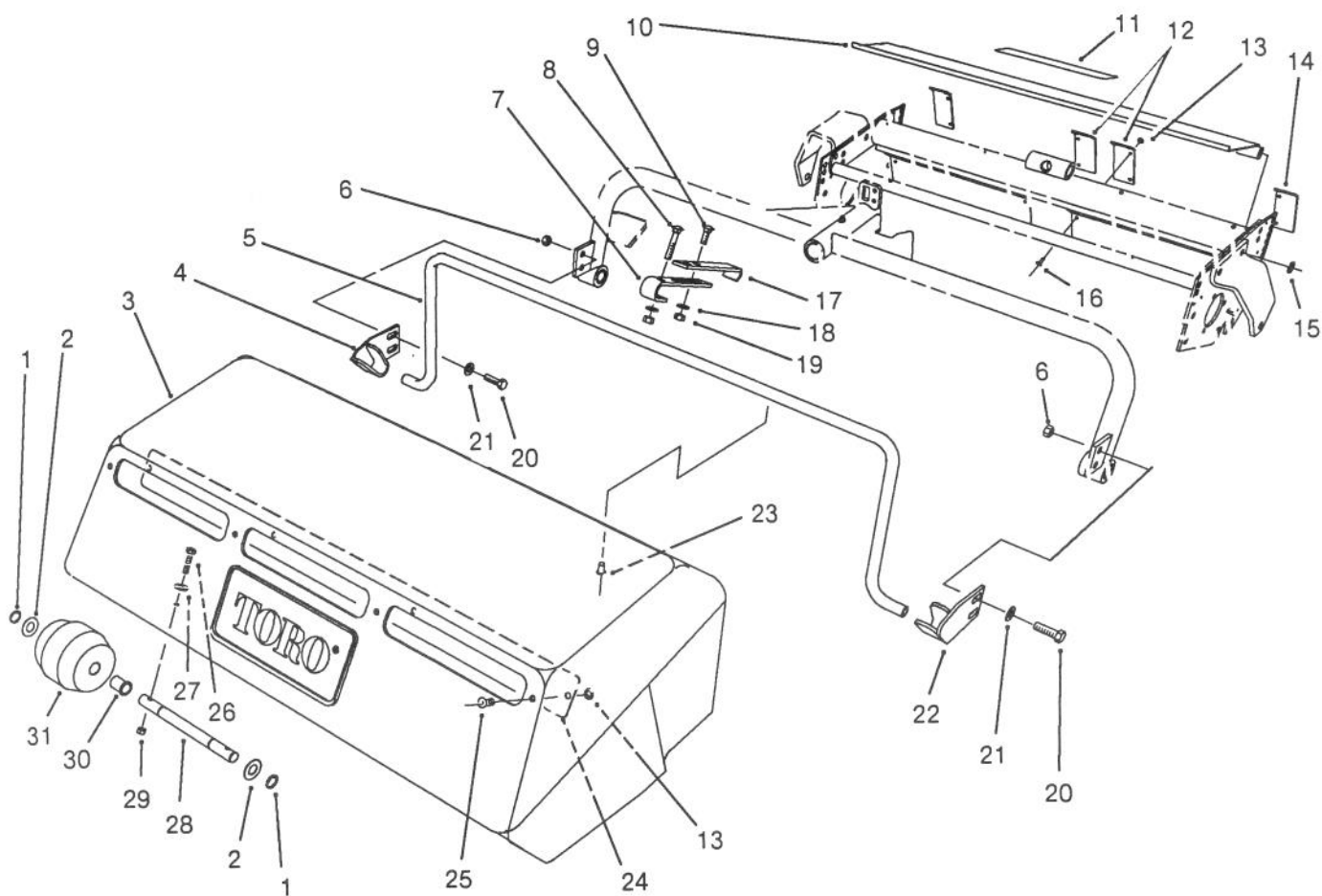


T-0288

CUTTING UNIT ROLLER SCRAPER KIT PART NO. 60-9560 (Optional)

Ref. No.	Part No.	Description	No. Used
1	61-0590	Scraper - Roller	3
2	323-7	Screw - Cap Hex. Hd.	6

Ref. No.	Part No.	Description	No. Used
3	3296-59	Nut - Lock	6
4	3218-3	Nut - Jam	6



T-0289

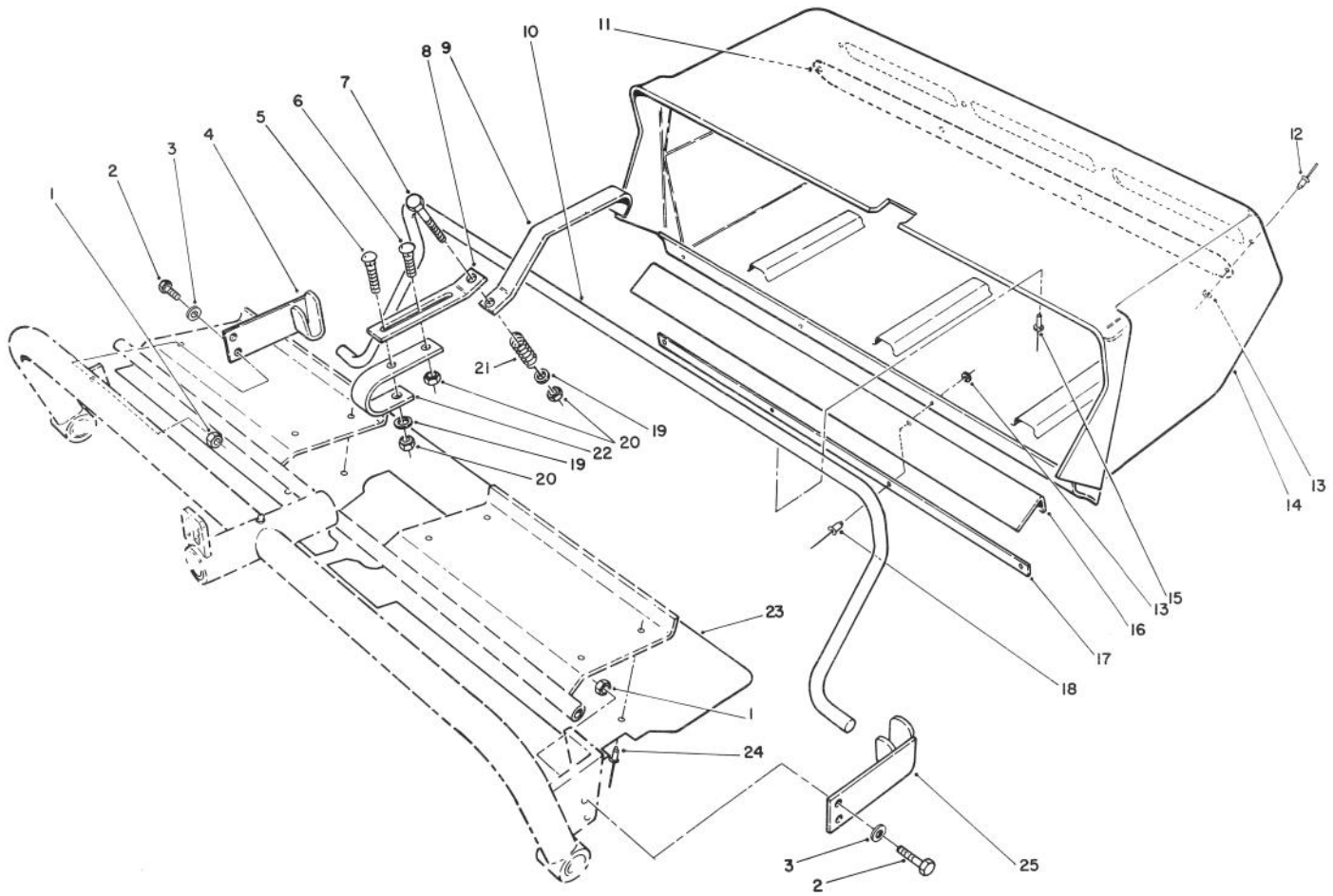
GRASS COLLECTION SYSTEM MODEL NO. 03433 (Optional) (FRONT CUTTING UNIT BASKET ASSEMBLY)

Ref. No.	Part No.	Description	No. Used
1	32120-64	Ring - Snap	8
2	3-9274	Spacer - Wheel	8
3	61-1330	Front Grass Basket Assy. (Incl. Ref. #1, 2, 5, 7-9, 13, 17-19 & 23-31)	2
4	61-1280	Bracket - Basket R.H.	2
5	61-1190	Support - Basket (Front)	2
6	3296-39	Nut - Lock	8
7	61-3160	Hanger - Basket (Front)	2
8	3230-5	Bolt - Carriage	2
9	3230-2	Bolt - Carriage	4
10	61-0750	Deflector - Grass	2
11	62-5070	Decal - Warning	2
12	61-3290	Cover - Middle	4
13	3256-49	Washer - Flat	32
14	61-3280	Cover - End	4
15	3253-21	Washer - Lock	4

Ref. No.	Part No.	Description	No. Used
16	3269-23	Rivet - Pop	24
17	62-7230	Hanger - Adjustable (Front)	2
18	3256-23	Washer - Flat	6
19	3296-29	Nut - Lock	6
20	323-7	Screw - Cap Hex. Hd.	8
21	3256-24	Washer - Flat	8
22	61-1270	Bracket - Basket L.H.	2
23	3269-18	Rivet - Pop	20
24	61-3170	Baffle - Grass	2
25	3269-22	Rivet - Pop	8
26	321-8	Screw - Cap Hex. Hd.	8
27	3256-2	Washer - Flat	8
28	5-2891	Shaft - Wheel	4
29	32153-4	Nut - Lock	8
30	256-90	Bushing - Flange	8
31	4-7439	Wheel Assembly (Incl. Ref. #30)	4

NOTE: Left Front Cutting Unit Shown.

NOTE: Model No. 03433 Includes 2 Front and 1 Rear Basket Assemblies.



T-0290

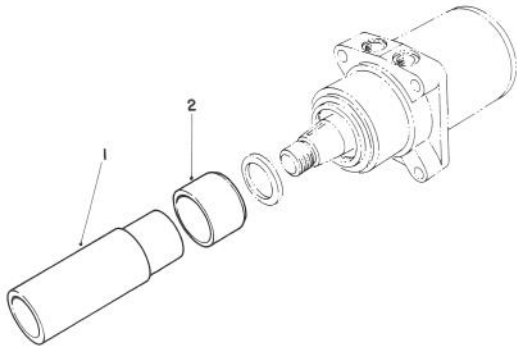
GRASS COLLECTION SYSTEM MODEL 03433 (Opt.) (Cont.) (REAR CUTTING UNIT BASKET ASSEMBLY)

Ref. No.	Part No.	Description	No. Used	Ref. No.	Part No.	Description	No. Used
1	3296-39	Nut - Lock	3	14	61-1340	Rear Grass Basket Assy. (Incl. Ref. #10-13 & 15-18)	1
2	323-7	Screw - Cap Hex. Hd.	4	15	3269-18	Rivet - Pop	10
3	3256-24	Washer - Flat	4	16	62-5130	Flap - Rubber	1
4	61-1260	Bracket - Basket R.H.	1	17	63-8740	Strap - Basket	1
5	3230-8	Bolt - Carriage	1	18	3290-282	Rivet - Pop	10
6	3230-2	Bolt - Carriage	1	19	3256-23	Washer - Flat	2
7	322-7	Screw - Cap Hex. Hd.	1	20	3296-29	Nut - Lock	3
8	67-5910	Plate - Rear	1	21	63-4220	Spring - Compression	1
9	67-5890	Hanger - Basket Rear	1	22	62-7480	Bracket - Hanger	1
10	67-5920	Support - Basket Rear	1	23	67-5800	Flap - Basket Rear	1
11	61-3170	Baffle - Grass	1	24	3269-23	Rivet - Pop	8
12	3269-22	Rivet - Pop	4	25	61-1250	Bracket - Basket L.H.	1
13	3256-49	Washer	8				

Note: Model No. 03433 Includes 2 Front and 1 Rear Basket Assemblies.

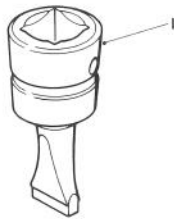
SPECIAL TOOLS

DRIVE MOTOR SEAL INSTALLATION TOOL NO. 19-2660



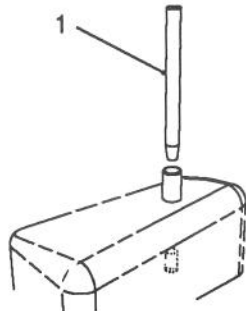
Ref. No.	Part No.	Description	No. Used
1		Driver - Seal	1
2		Holder - Seal	1

BEDKNIFE SCREW TOOL NO. 51-0880



Ref. No.	Part No.	Description	No. Used
1		Tool - Bedknife Screw	1

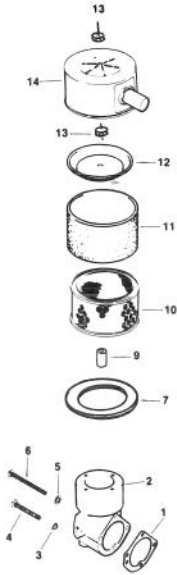
HYDRAULIC OIL RESERVOIR PLUG NO. 63-4310



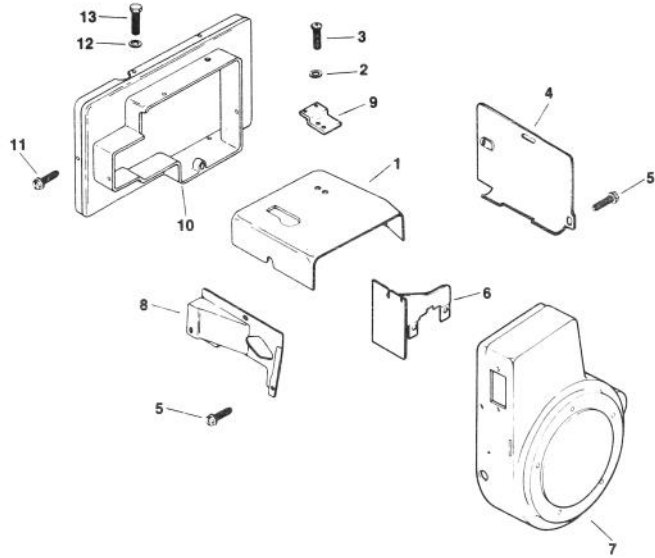
Ref. No.	Part No.	Description	No. Used
1		Plug - Hydraulic Oil Reservoir	1

ENGINE KOHLER MODEL NO. M16 SPEC. NO. 711526

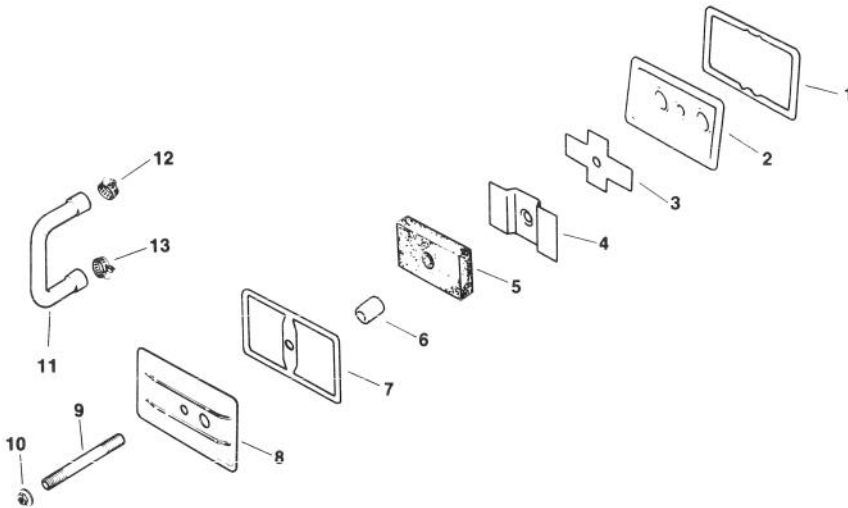
Group 1



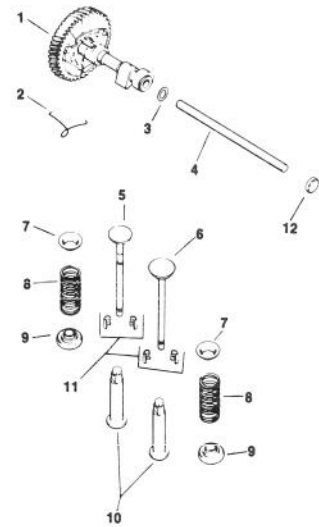
Group 2



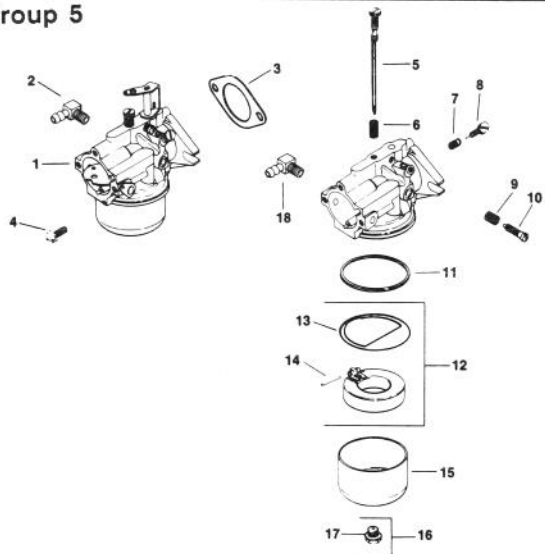
Group 3



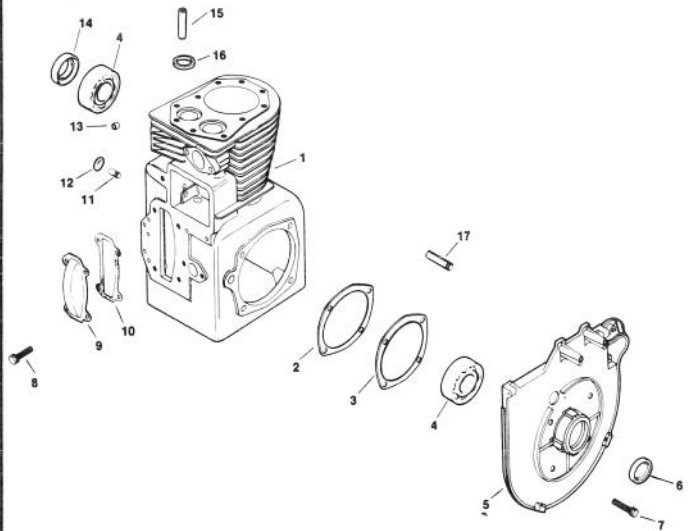
Group 4



Group 5



Group 7



ENGINE KOHLER MODEL NO. M16 SPEC. NO. 711526

Ref. No.	Part No.	Description	No. Used
AIR INTAKE - Group 1			
1	277069	Gasket - Air Cleaner Elb.	1
2	52 054 26	Elbow - Air Cleaner	1
3	X-22-9	Washer - ITLW	2
4	X-50-57	Screw - Pan Hd.	2
5	X-25-79	Washer - Plain	1
6	X-50-37	Screw - Pan Hd.	1
7	47 041 11	Gasket - Base	1
9	231032	Seal	1
10	45 083 02	Element	1
11	45 083 01	Precleaner	1
12	52 082 04	Cover - Cleaner Element	1
†13		Nut - Lock	2
14	52 096 26	Cover - Air Cleaner	1
*	25 113 07	Decal - Air Cleaner	1
BAFFLES & SHROUD			
Group 2			
1	45 063 08	Baffle - Head	1
2	X-25-53	Washer - Plain	1
3	47 086 08	Screw - Pozidrive T.H.	1
4	47 063 10	Baffle - Cylinder	1
5	52 086 11	Screw - Hex. Washer Hd.	8
6	47 063 07	Baffle - Inner	1
7	47 027 42	Housing - Blower	1
8	47 063 06	Baffle - Side Air	1
9	47 126 23	Bracket - Air Duct	1
10	47 755 33	Kit - Air Duct	1
11	X-67-64	Screw - Hex. Washer Hd.	3
12	X-25-20	Washer - Plain	1
13	X-154-4	Screw - Cap Hex. Hd.	1
BREATHER & VENT			
Group 3			
1	235048	Gasket - Breather Plate	1
2	235631	Plate - Breather	1
3	235047	Reed - Breather	1
4	235117	Baffle - Breather	1
5	235118	Filter - Breather	1
6	231032	Seal - Breather	1
7	275144	Gasket - Valve Cover	1
8	275839	Cover - Valve	1
9	275220	Stud	1
10	X-799-1	Palnut	1
11	47 326 02	Hose	1
12	X-426-3	Clamp - Hose (Large)	1
13	X-426-9	Clamp - Hose (Small)	1

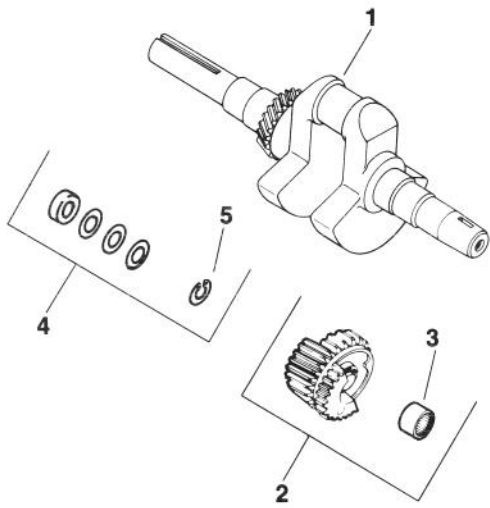
Ref. No.	Part No.	Description	No. Used
CAMSHAFT & VALVES			
Group 4			
1	47 010 11	Camshaft Assembly	1
2	47 089 01	Spring - Actuating	1
3	275066	Spacer (.005)	1
*	275067	Spacer (.010)	1
4	47 380 09	Pin - Camshaft	1
5	237672	Valve - Exhaust	1
6	235582	Valve - Intake	1
7	235011	Retainer - Upper Spring	2
8	235168	Spring - Valve	2
9	52 413 01	Rotator	2
10	D-235327	Tappet	2
11	41 755 10	Kit - Retainer	2
12	X-702-3	Plug - Cup	1
CARBURETOR - Group 5			
1	45 053 76	Carburetor Assembly (Incl. Ref. #5-18)	1
2	25 155 02	Connector - 90° Hose	1
3	47 049 01	Gasket - Carburetor	1
4	X-770-1	Screw - Slt'd. Hd.	2
5	45 103 01	Needle - Main	1
6	200383	Spring - Main	1
7	200380	Spring - Idle Fuel	1
8	275231	Needle - Idle Fuel	1
9	232555	Spring - Idle Speed	1
10	232556	Screw - Idle Speed	1
11	200375	Gasket - Bowl	1
12	25 757 03	Kit - Float	1
13	25 041 02	Gasket - Bowl Baffle	1
14	200376	Pin - Float Hinge	1
15	235448	Bowl - Fuel	1
16	47 100 06	Screw - Bowl Retainer	1
17	200372	Gasket - Bowl Ret. Screw	1
18	X-391-10	Connector	1
*	25 757 02	Kit - Carburetor Repair	1
*	25 757 05	Kit - Throttle/Choke Repair	1
CRANKCASE - Group 7			
1	45 782 14	Miniblock (Incl. Ref. #13, 15-16)	1
2	47 422 05	Gasket - Shim	A/R
3	47 041 09	Gasket - Bearing Plate	1
4	235376	Bearing - Ball	2
5	47 146 07	Plate - Bearing	1
6	47 032 06	Seal - Front Oil	1
7	X-159-2	Screw - Cap Hex. Hd.	4
8	X-132-6	Screw - Cap Hex. Hd.	4
9	235026	Cover - Camshaft	1
10	235025	Gasket - Camshaft Cover	1
11	235125-S	Shaft - Governor	1
12	X-230-11	Plug - Expansion	1
13	234866	Bearing Gov. Cross Shaft	1
14	47 032 07	Seal - Rear Oil	1
15	230265	Insert - Intake Valve	1
16	235007-S	Guide - Valve	2
17	236559	Shaft - Balance Gear Stub	2
*	45 755 12	Gasket Set W/Seals	1
*	45 004 06	Gasket Set W/O Seals	1

*Not Illustrated

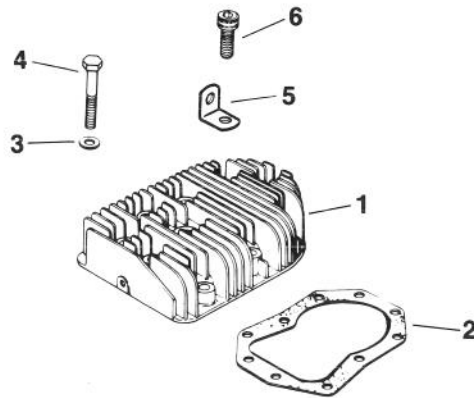
†NOTE: Obtain replacement parts from The Toro Co.

ENGINE KOHLER MODEL NO. M16 SPEC. NO. 711526 (Cont.)

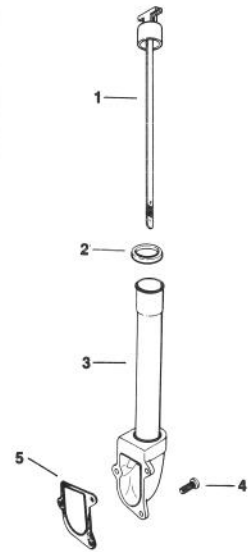
Group 8



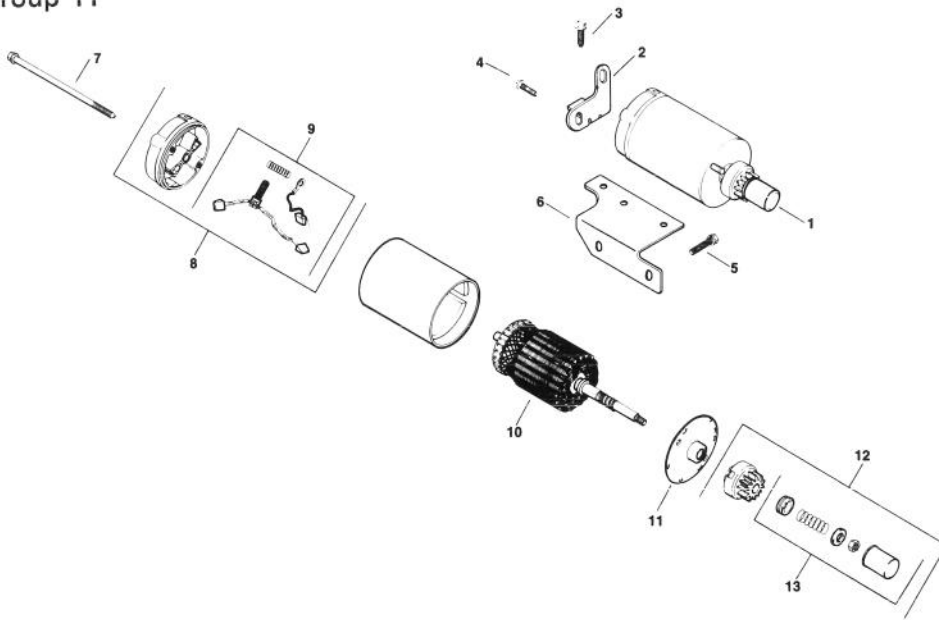
Group 9



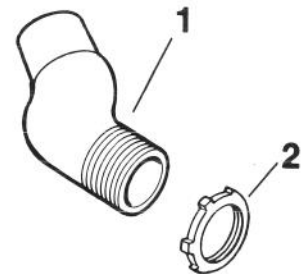
Group 10



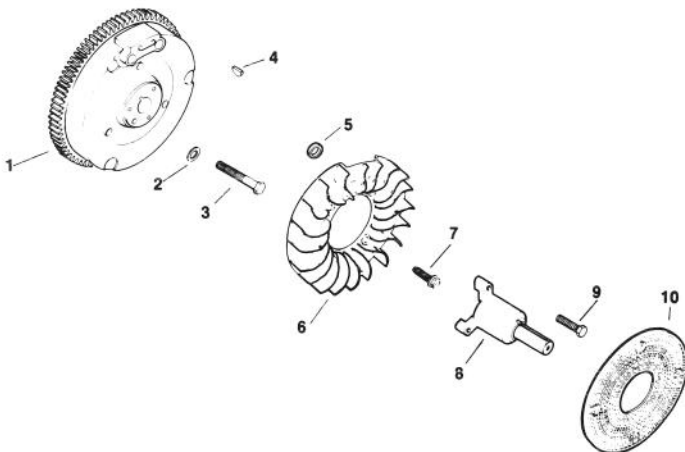
Group 11



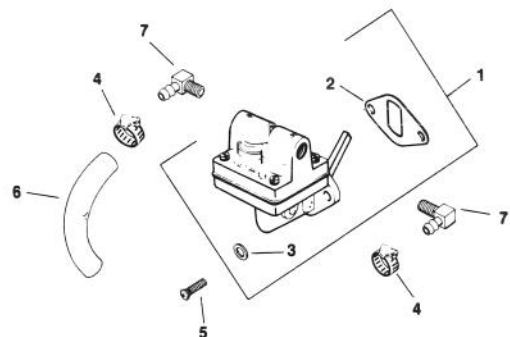
Group 12



Group 13



Group 14



ENGINE KOHLER MODEL NO. M16 SPEC. NO. 711526 (Cont.)

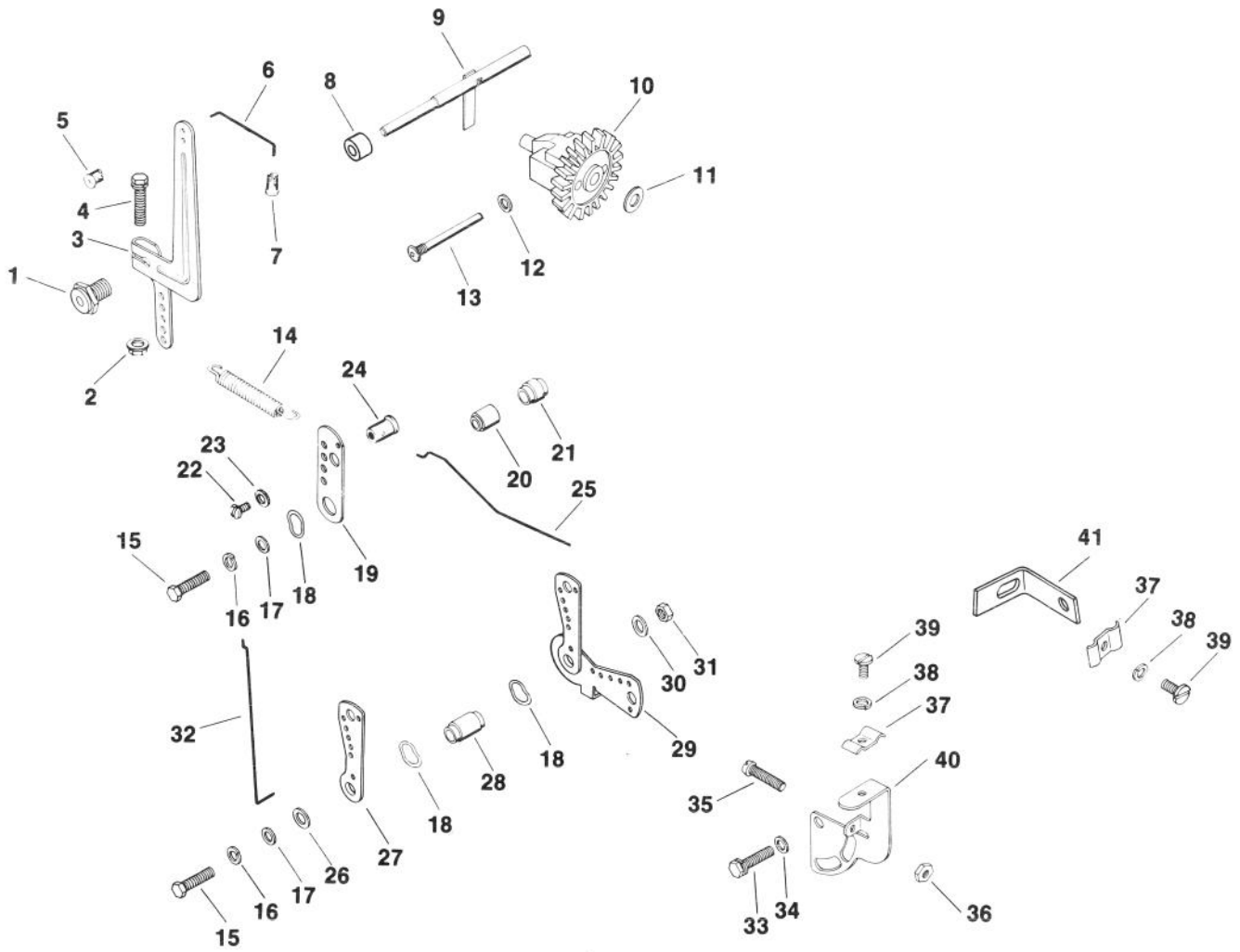
Ref. No.	Part No.	Description	No. Used
1	45 014 83	CRANKSHAFT - Group 8 Kit - Crankshaft (Includes Flywheel Hardware)	1
2	45 043 03	Gear Assembly	2
3	47 030 01	Bearing - Needle	2
4	47 755 01	Kit - Spacer	1
5	X-269-34	Retainer	2
		CYLINDER HEAD Group 9	
1	45 015 09	Head - Cylinder	1
2	45 041 16	Gasket - Head	1
3	270889	Washer - Plain	10
4	270158	Screw - Cap Hex. Hd.	9
5	47 445 02	Strap - Lifting	1
6	47 086 17	Screw - Hex. Socket Hd.	1
		DIPSTICK - Group 10	
1	47 038 27	Dipstick	1
2	41 153 01	O-Ring	1
3	47 029 06	Adapter - Oil Fill	1
4	X-131-2	Screw - Flat Hd.	3
5	237064	Gasket - Adapter	1
		ELECTRIC STARTER Group 11	
1	41 098 04	Starter Assembly (Incl. Ref. #7-13)	1
2	45 126 17	Brace - Tail	1
3	X-67-83	Screw - Hex. Washer Hd.	1
4	X-67-62	Screw - Hex. Washer Hd.	1
5	X-159-2	Screw - Cap Hex. Hd.	2
6	47 126 29	Bracket - Solenoid	1
7	41 086 19	Bolt - Thru	2
8	41 227 04	Cap - Commutator End	1
9	52 755 15	Kit - Brush	1
10	45 170 02	Armature	1
11	41 227 03	Cap - Drive End	1
12	47 755 07	Kit - Drive	1
13	47 755 13	Kit - Drive Parts	1
*	25 450 03	Tag - Caution	1

Ref. No.	Part No.	Description	No. Used
1	45 054 04	EXHAUST - Group 12 Elbow - Exhaust	1
2	45 100 01	Nut - Lock	1
		FLYWHEEL - Group 13	
1	47 025 53	Flywheel	1
2	52 114 02	Washer - Plain	1
3	25 086 24	Screw - Hex. Hd. Machine	1
4	X-46-3	Key - Woodruff	1
5	25 112 04	Spacer	1
6	25 157 01	Fan	1
7	25 086 21	Screw - Hex. Washer Hd.	4
8	235954	Shaft - Front Drive	1
9	X-159-2	Screw - Cap Hex. Hd.	4
10	25 162 03	Screen - Grass	1
		FUEL PUMP - Group 14	
1	47 559 04	Fuel Pump Assembly	1
2	25 041 05	Gasket - Fuel Pump	1
3	X-25-63	Washer - Plain	2
4	X-426-9	Clamp - Hose	2
5	X-174-2	Screw - Pozidrive F.H.	2
6	25 353 01	Line - Fuel	1
7	25 155 02	Connector - 90° Hose Out.	2

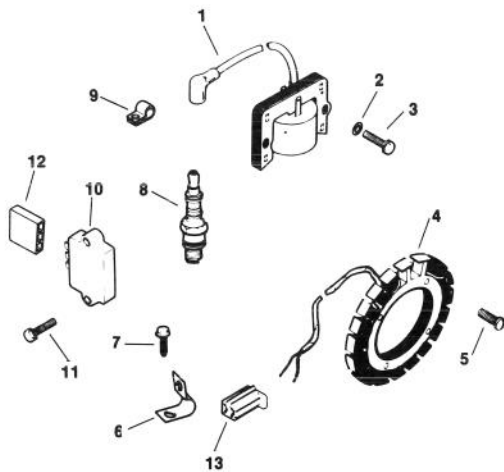
*Not Illustrated

ENGINE KOHLER MODEL NO. M16 SPEC. NO. 711526 (Cont.)

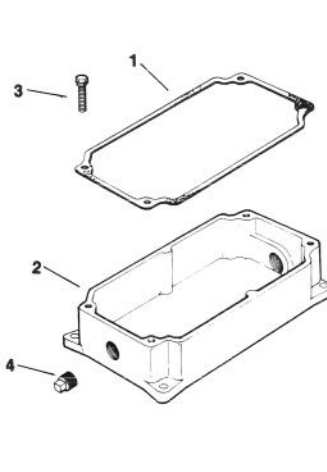
Group 17



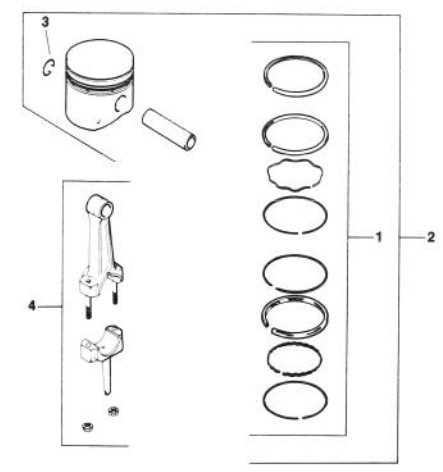
Group 18



Group 21



Group 22



ENGINE KOHLER MODEL NO. M16 SPEC. NO. 711526 (Cont.)

Ref. No.	Part No.	Description	No. Used
GOVERNOR - Group 17			
1	235476	Bushing - Governor Shaft	1
2	X-799-1	Palnut	1
3	47 090 20	Lever - Governor	1
4	X-776-1	Screw	1
5	47 158 07	Bushing - Linkage (White)	1
6	47 079 05	Linkage - Governor	1
7	25 158 09	Bushing - Linkage (Yellow)	1
8	X-400-80	Spacer	1
9	A-235256-S	Kit - Governor Shaft	1
10	A-235743-S	Kit - Governor Gear	1
11	237022	Washer - Thrust	1
12	25 468 01	Washer - Plain	1
13	231355	Pin - Governor Stop	1
14	235496	Spring - Governor	1
15	X-5-26	Screw - Hex. Hd.	2
16	X-20-1	Washer - Lock	2
17	X-25-63	Washer - Plain	2
18	275690	Washer - Wave	3
19	235086	Bracket - Speed Control	1
20	235085	Spacer	1
21	X-384-2	Spacer	1
22	X-51-8	Screw Pan Hd.	1
23	X-25-102	Washer - Plain	1
24	48 755 10	Kit - Clamp	1
25	47 079 08	Linkage - Throttle	1
26	X-25-82	Washer - Plain	1
27	47-090-05	Lever - Choke Control	1
28	47-112-19	Spacer	1
29	47 090 09	Lever - Throttle Control	1
30	X-25-95	Washer - Plain	1
31	X-81-1	Nut - Hex.	1
32	47 079 01	Linkage - Choke	1
33	X-132-6	Screw - Hex. Hd.	1
34	X-25-72	Washer - Plain	1
35	232556	Screw	1
36	X-72-4	Nut - Hex.	1
37	12 237 01	Clamp - Cable	1
38	X-19-1	Washer - Lock	1
39	X-67-38	Screw - Hex. Hd.	1
40	47 126 13	Bracket - Choke	1
41	47 126 36	Bracket - Choke	1
IGNITION - Group 18			
1	47 584 01	Module - Ignition (Before Serial No. 1715900013)	1
*	47 584 02	Module - Ignition (After Serial No. 1715900003)	1
2	X-25-79	Washer - Plain	2
3	X-156-1	Screw - Cap Hex. Hd.	2
4	237878	Kit - Stator	1
5	X-778-1	Screw - Stator Mounting Units Before Serial No. 1728100015	4
*	X-67-51	Screw - Stator Mounting Units After Serial No. 1728100005	4
6	X-728-1	Clip - Lead	1
7	X-67-59	Screw - Hex. Washer Hd.	1
8	235041-S	Spark Plug	1
9	210181	Clip - Hi-Tension Lead	1
10	25 755 03	Rectifier - Regulator Kit	1
11	X-132-5	Screw - Cap Hex. Hd.	2
12	236602	Connector - Female	1

*Not Illustrated

Ref. No.	Part No.	Description	No. Used
13	41 155 03	Connector - Male	1
*	47 518 46	Lead - Reg.-Connector (Violet)	1
*	47 518 43	Lead - Module-Connector Units Before Serial No. 1723700013	1
*	47 518 38	Lead - Module-Connector Units After Serial No. 1723700003	1
OIL PAN - Group 21			
1	235057	Gasket - Pan	1
2	47 199 10	Pan - Oil	1
3	X-159-3	Screw - Cap Hex. Hd.	4
4	X-75-6	Plug - Square Hd.	2
PISTON & ROD - Group 22			
Units Before Serial No. 1820000013			
1	45 108 06	Ring Set - Std & .003	1
*	45 108 07	Ring Set - .010	1
*	45 108 08	Ring Set - .020	1
*	45 108 09	Ring Set - .030	1
2	45 874 01	Piston W/Ring Set - Std.	1
*	45 874 02	Piston W/Ring Set - .003	1
*	45 874 03	Piston W/Ring Set - .010	1
*	45 874 04	Piston W/Ring Set - .020	1
*	45 874 05	Piston W/Ring Set - .030	1
3	47 018 01	Retainer - Piston Pin	2
4	45 067 22	Connecting Rod - Std. Units Before Serial No. 1731000013	1
*	45 067 24	Connecting Rod - Std. Units After Serial No. 1731000003	1
*	45 067 23	Connecting Rod - .010 Units Before Serial No. 1731000013	1
*	45 067 25	Connecting Rod - .010 Units After Serial No. 1731000003	1
PISTON & ROD - Group 22			
Units After Serial No. 1820000003			
1	45 108 10	Ring Set - Std & .003	1
*	45 108 11	Ring Set - .010	1
*	45 108 12	Ring Set - .020	1
*	45 108 13	Ring Set - .030	1
2	45 874 11	Piston W/Ring Set - Std.	1
*	45 874 12	Piston W/Ring Set - .003	1
*	45 874 13	Piston W/Ring Set - .010	1
*	45 874 14	Piston W/Ring Set - .020	1
*	45 874 15	Piston W/Ring Set - .030	1
3	47 018 01	Retainer - Piston Pin	2
4	45 067 22	Connecting Rod - Std. Units Before Serial No. 1731000013	1
*	45 067 24	Connecting Rod - Std. Units After Serial No. 1731000003	1
*	45 067 23	Connecting Rod - .010 Units Before Serial No. 1731000013	1
*	45 067 25	Connecting Rod - .010 Units After Serial No. 1731000003	1

INDEX

Description	Page
Hood Assembly	1-2
Frame and Steering Assembly	3-4
Fuel Tank Assembly	5
Two Position Valve No. 71-2830	6
Instrument Panel Assembly	7
Electrical Schematic	8
Engine & Clutch Assembly	9
Electric Clutch Assembly No. 61-0050	10
Hydraulic Schematic	11
Hydraulic Tank & Battery Assembly	12
Hydraulic Oil Cooler Assembly	13
Hydraulic Drive Assembly	14
Hydraulic Pump Assembly No. 61-0080	15
Traction Controls Assembly	16
L.H. Front Wheel Assembly	17
R.H. Front Wheel Assembly	18
Hydraulic Drive Motor No. 66-5291	19
Brake Assembly	20
Jackshaft Assembly	21
Cutting Unit Lift Assembly	22

Description	Page
Hydraulic Cylinder No. 61-0090	23
Cutting Unit Lift Control Valve Assembly	24
Control Valve No. 43-1950	25
Seat Assembly Model No. 30756 (Optional)	26
Cutting Unit Carrier Frame Assembly	27-28
5 Blade Cutting Unit Reel Assembly	29-30
5 Blade Cutting Unit Roller Assembly	31
8 & 11 Blade Cutting Unit Reel Assembly	32-33
8 & 11 Blade Cutting Unit Roller Assembly	34
Cutting Unit Roller Options	35
Cutting Unit Roller Scraper Kit Part No. 60-9590 (Optional)	36
Grass Collection System Model No. 03433 (Opt.) (Front Cutting Unit Basket Assembly)	37
Grass Collection System Model No. 03433 (Opt.) (Rear Cutting Unit Basket Assembly)	38
Special Tools	39
Engine Kohler Model No. M16 Spec. No. 711526	40-45

MAINTENANCE RECORD

Date								

MAINTENANCE RECORD

Date									

MAINTENANCE RECORD

Date									