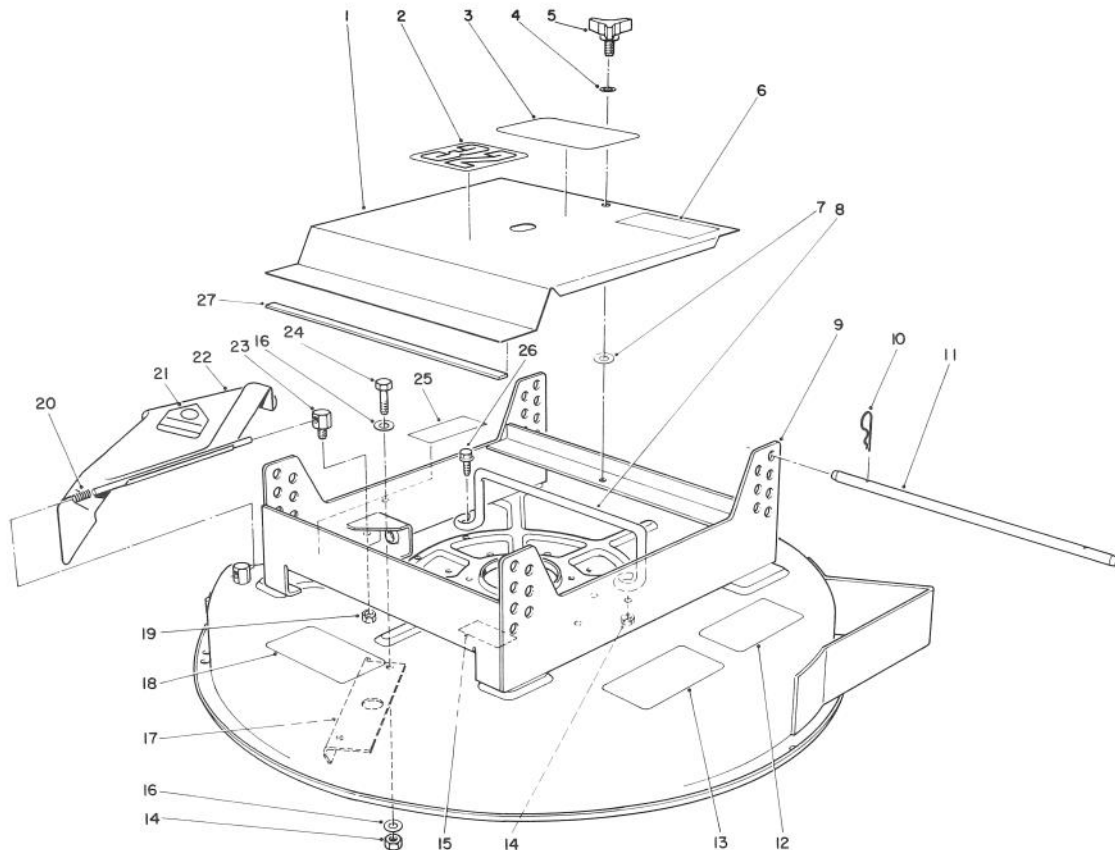


MODEL NO. 30133-0000001 Thru
1000001 & UP

PARTS CATALOG

32" CUTTING UNIT WIDE AREA MOWER

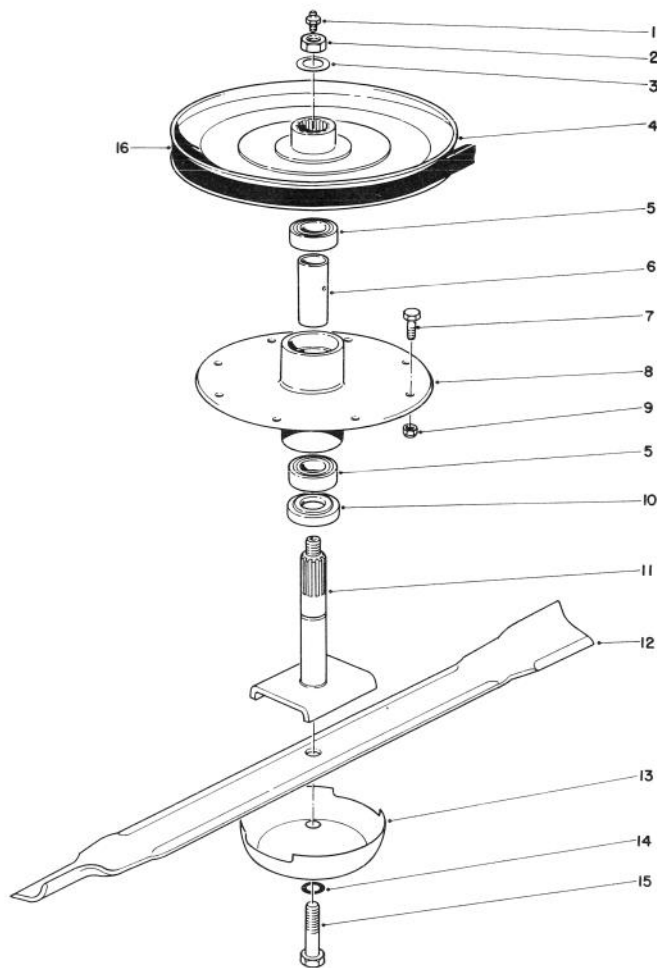


T-0621

CUTTING UNIT ASSEMBLY

Ref. No.	Part No.	Description	No. Used
1	67-6150	Cover(Incl. Ref.#2-7 & 27)	1
2	67-6170	Decal - 32"	1
3	74-2080	Decal - Proline	1
4	3256-24	Washer - Flat	1
5	27-4571	Knob - Cover	1
6	54-0910	Decal - Warning	1
7	32151-72	Ring - Retaining	1
8	74-0570	Guide - Belt	1
9	13-8629	Deck Assembly	1
10	3290-355	Pin - Cotter	4
11	67-6140	Rod - Support	2
12	42-6860	Decal - Height of Cut	1
13	66-1330	Decal - Caution	1
14	3296-29	Nut - Lock	5

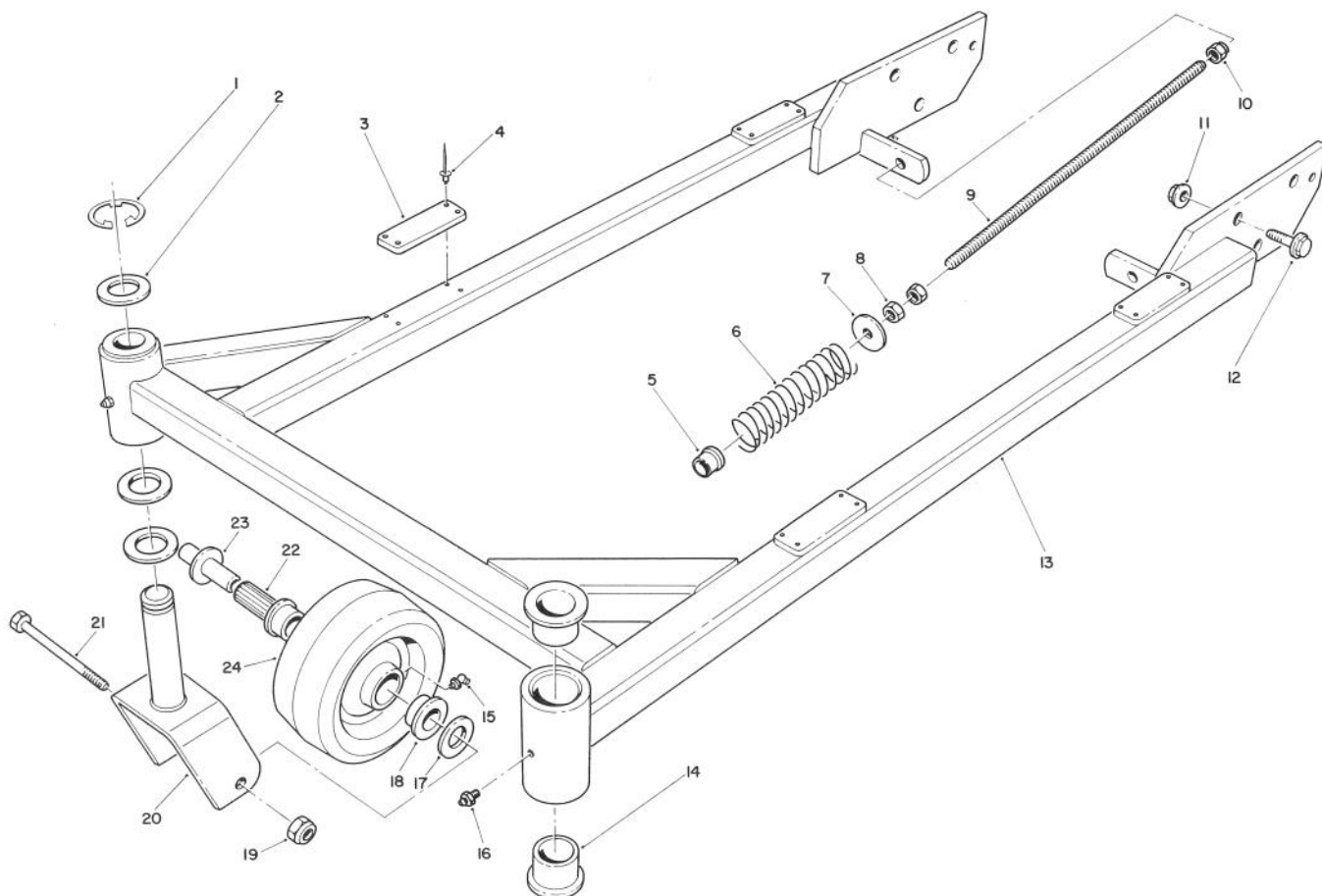
Ref. No.	Part No.	Description	No. Used
15	67-5360	Decal - Shield Missing	1
16	3256-23	Washer - Flat	4
17	44-5720	Baffle - Deck	1
18	66-1340	Decal - Danger	1
19	32153-2	Nut - Lock	1
20	28-8010	Spring	1
21	54-9220	Decal	1
22	44-5930	Deflector Assembly (Incl. Ref. #21)	1
23	28-7350	Post - Pivot Deflector	1
24	322-4	Screw - Hex. Hd. Cap	3
25	66-6380	Decal - Danger	1
26	3234-29	Screw - Hex. Hd. Flange	2
27	67-6180	Strip - Magnetic	1



T-0622

DRIVE SPINDLE ASSEMBLY

Ref. No.	Part No.	Description	No. Used	Ref. No.	Part No.	Description	No. Used
1	302-5	Fitting - Grease	1	9	3296-29	Nut - Lock	8
2	32152-6	Nut - Lock	1	10	67-6080	Spacer	1
3	3256-27	Washer - Flat	1	11	67-6040	Shaft - Spindle	1
4	74-0580	Pulley	1	12	33-4750	Blade	1
5	251-257	Bearing	2	13	7-3522	Cup - Anti Scalp	1
6	67-6070	Spacer	1	14	3253-53	Washer - Lock	1
7	322-4	Screw - Hex. Hd. Cap	8	15	51-4060	Screw - Hex. Hd. Cap	1
8	67-6060	Housing - Spindle	1	16	67-6920	"V" Belt - Deck Drive	1



T-0997

CARRIER FRAME ASSEMBLY

Ref. No.	Part No.	Description	No. Used	Ref. No.	Part No.	Description	No. Used
1	32151-91	Ring - Retaining	2	14	28-9290	Bushing	4
2	3-6781	Washer - Flat	6	15	302-11	Fitting - Grease	2
3	74-0330	Pad - Rubber	4	16	302-5	Fitting - Grease	2
4	3296-24	Rivet - Pop	16	17	67-6570	Spacer - Wheel	4
5	256-156	Bushing	2	18	62-5580	Bushing	4
6	74-0290	Spring - Compression	2	19	32153-5	Nut	2
7	41-8440	Washer - Flat	2	20	74-0270	Fork - Castor	2
8	3218-5	Nut	4	21	325-18	Screw - Hex. Hd. Cap	2
9	74-0310	Shaft - Adjusting	2	22	63-8580	Roller - Bearing	2
10	3256-45	Nut - Lock	2	23	67-6220	Spanner	2
11	32128-27	Nut - Flange Lock	6	24	63-8400	Wheel Assembly - Castor (Incl. Ref. #15, 18, & 22)	2
12	3234-6	Screw - Hex. Hd. Flange	6				
13	74-0080	Carrier Frame Assembly (Incl. Ref. #14)	1				

PRODUCT CHANGES

In an effort to make improvements available to TORO owners as quickly as possible, minor changes are incorporated into Toro's products from time to time that do not become immediately shown in the Parts Catalog. If such a change has been made in your unit, which is not reflected in your manual, see your TORO Distributor or his Authorized TORO Service Dealer for information and part numbers.

IDENTIFICATION AND ORDERING

MODEL AND SERIAL NUMBERS

The Lawnmower has two identification numbers; a model number and a serial number. The two numbers are stamped on a decal which is located on the rear of the housing. In any correspondence concerning the lawnmower, supply model and serial numbers to assure that correct information and replacement parts are obtained.

To order replacement parts from an Authorized TORO Service Dealer, supply the following information:

1. Model and serial number of the lawnmower.
2. Part number, description, and the quantity of part(s) desired.

NOTE: Do not order by reference number if a parts catalog is being used; use the **PART NUMBER**.

COUNTRIES OTHER THAN THE UNITED STATES OR CANADA

Customers who have purchased TORO products exported from the United States or Canada should contact their Toro Distributor (Dealer) to obtain guarantee policies for your country, province or state. If for any

reason you are dissatisfied with your Distributor's service or have difficulty obtaining guarantee information, contact the TORO Importer. If all other remedies fail, you may contact us at The Toro Company.

MAINTENANCE RECORD

[illegible]

Compliance with Radio Interference Regulations Certified.
Certifie Conforme au Reglement sur le Brouillage Radioelectrique.