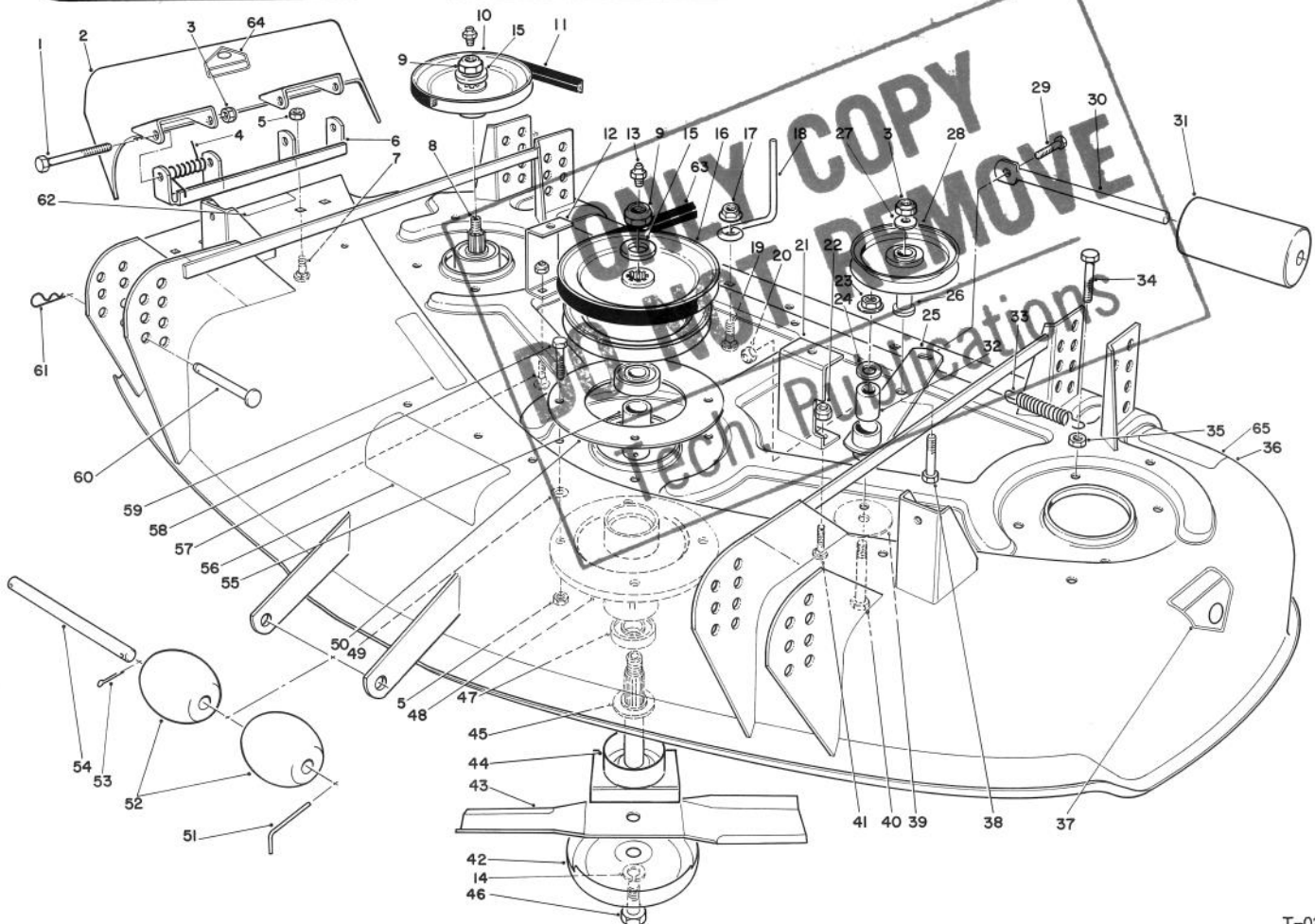


TORO®

MODEL NO. 30144-0000001 Thru
1000001 & UP

PARTS CATALOG

44" CUTTING DECK WIDE AREA MOWER



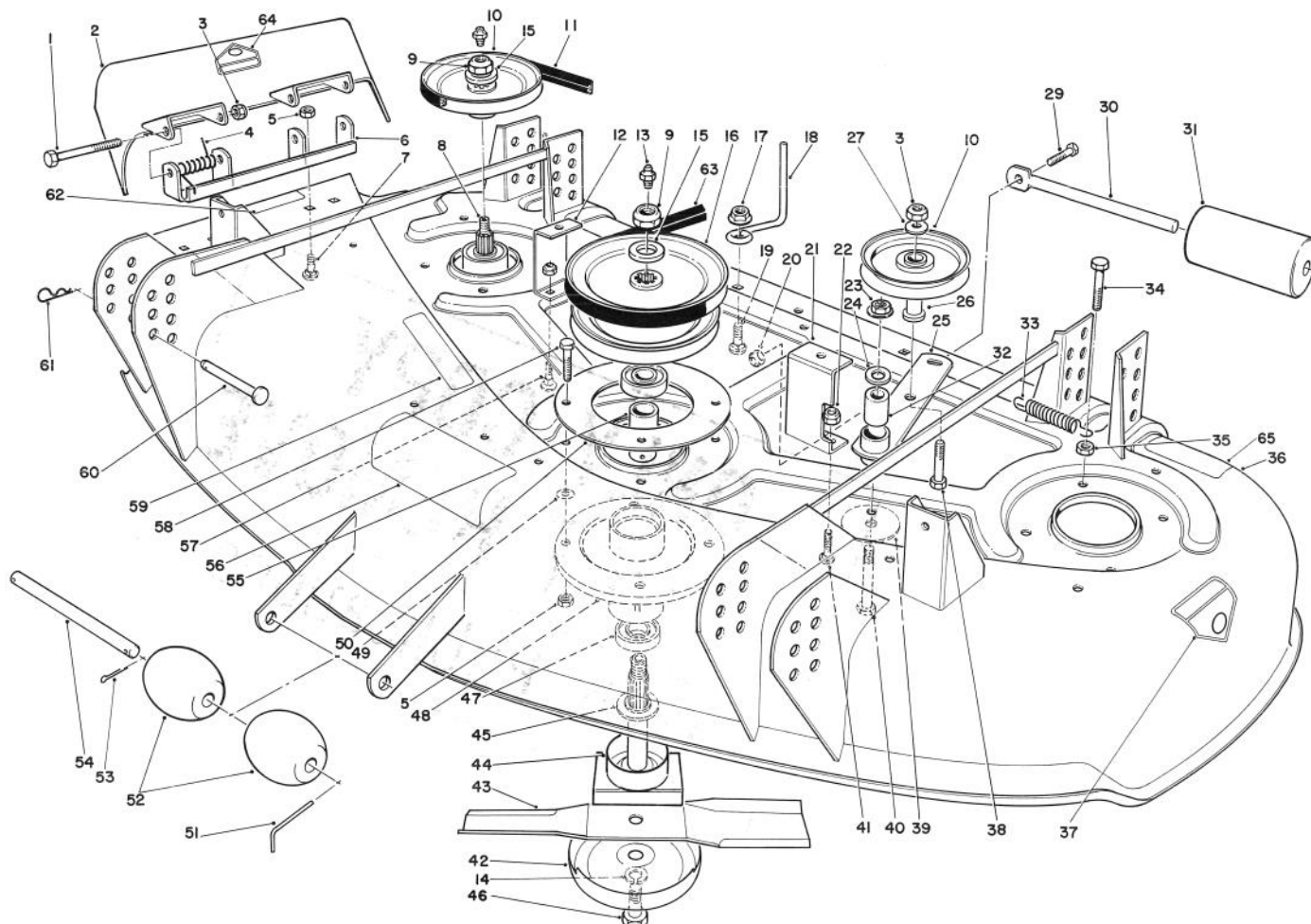
T-0213

CUTTING UNIT ASSEMBLY

Ref. No.	Part No.	Description	No. Used
1	3211-15	Screw - Hex. Hd. Cap	2
2	13-3899	Deflector - Grass (Incl. Ref. #64)	1
3	3296-5	Nut - Lock	3
4	40-6230	Spring - Torsion	2
5	32152-1	Nut - Lock	16
6	55-8320	Bracket - Pivot	1
7	3230-18	Bolt - Carriage	4
8	71-2780	Shaft - Spindle Drive	2
9	32146-20	Nut Lock	3
10	67-7690	Pulley - Spindle	2
11	27-1160	Belt - Spindle	1
12	54-3230	Cover - Bracket R.H.	1
13	302-2	Fitting - Grease	3
15	7-4150	Washer - Spindle	3
16	67-7650	Pulley	1

Ref. No.	Part No.	Description	No. Used
17	32128-13	Nut - Lock	2
18	52-4780	Rod - Belt	2
19	3230-2	Bolt - Carriage	2
20	3296-29	Nut - Lock	1
21	54-3240	Cover - Bracket	1
22	3296-42	Nut - Lock	4
23	32128-21	Nut - Flange Lock	1
24	3256-24	Washer	A/R
25	54-2710	Arm - Idler	1
26	65-5950	Bushing - Pulley	1
27	7-0081	Washer - Special	1
29	322-3	Screw - Hex. Hd. Cap	1
30	62-4480	Shaft - Roller	1
31	36-1740	Roller	1
32	51-3640	Sleeve - Idler Pivot	1
33	54-2730	Spring - Extension	1

TPS

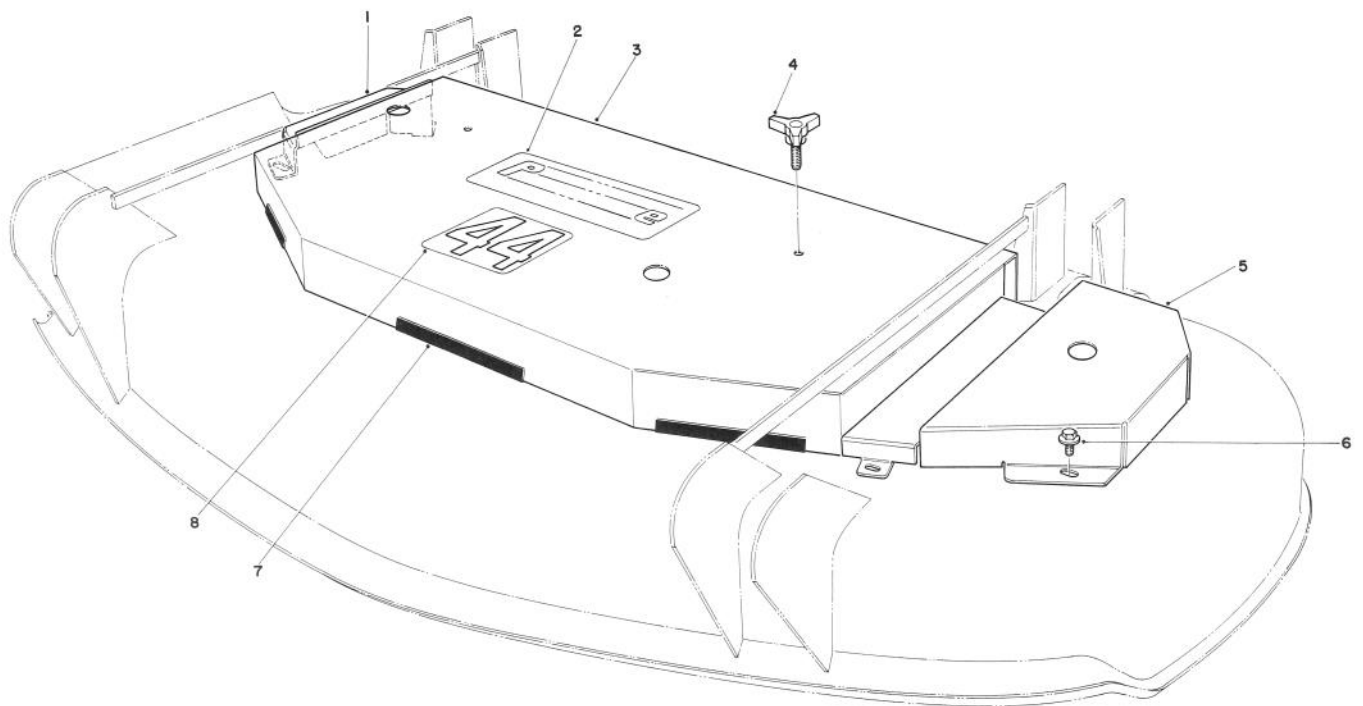


T-0213

CUTTING UNIT ASSEMBLY (Continued)

Ref. No.	Part No.	Description	No. Used	Ref. No.	Part No.	Description	No. Used
34	322-6	Screw - Hex. Hd. Cap	1	53	3272-11	Pin - Cotter	1
35	3218-2	Nut	1	54	40-6400	Shaft - Roller	1
36	13-8649	Housing (Incl. Ref. #37,56,62,64, & 65)	1	55	67-7580	Spacer - Bearing	3
37	43-8480	Decal - Danger	1	56	66-1340	Decal - Danger	1
38	3211-8	Screw - Hex. Hd. Cap	1	57	3229-1	Bolt - Carriage	2
39	20-9530	Washer	1	58	322-4	Screw - Hex. Hd. Cap	11
40	323-10	Screw - Hex. Hd. Cap	1	59	67-5360	Decal - Shield	1
41	3229-3	Bolt - Carriage	2	60	283-55	Pin - Clevis	4
42	67-7561	Cup - Anti Scalp	3	61	3290-355	Pin - Cotter	4
43	54-0010	Blade	3	62	66-6380	Decal - Deflector Missing	1
44	71-2790	Shaft - Spindle	1	63	54-2750	"V" Belt - Deck Drive	1
45	67-7570	Spacer - Spindle	3	64	54-9220	Decal - Danger	1
46	51-4060	Bolt - Blade	3	65	68-8340	Decal - Blade Torque	1
47	251-257	Bearing	6	*	55-4940	Blade - High Sail (Optional)	3
48	67-7590	Housing - Spindle	3	*	67-7660	Spindle Housing Assembly (Incl. Ref.#8-10,13,15,45, 47,48, & 55)	2
49	3256-2	Washer	A/R	*	67-7600	Spindle Housing Assembly (Incl. Ref.#9,13,15,16, 44,45,47,48, & 55)	1
50	55-8280	Ring - Support	2				
51	57-0690	Pin - Cotter Special	1				
52	29-4820	Roller	2				

*Not Illustrated

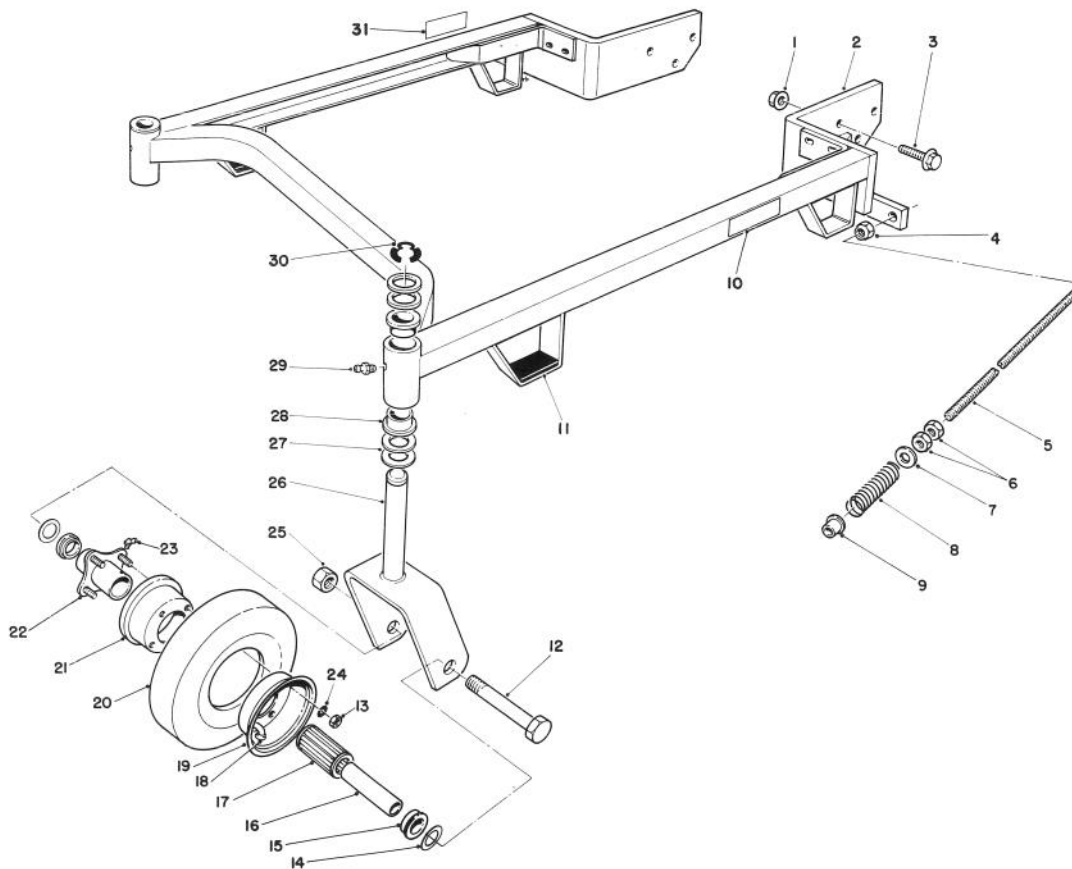


T-0214

CUTTING UNIT DECK COVERS

Ref. No.	Part No.	Description	No. Used
1	54-2250	Cover - Deck R.H.	1
2	74-2080	Decal - Proline	1
3	54-3190	Cover - Deck Center	1
4	62-6520	Handle - Adjustment	2

Ref. No.	Part No.	Description	No. Used
5	54-2220	Cover - Deck L.H.	1
6	46-8560	Screw - Self Tapping	5
7	29-0641	Trim - Jiffy	5
8	54-2760	Decal - 44"	1



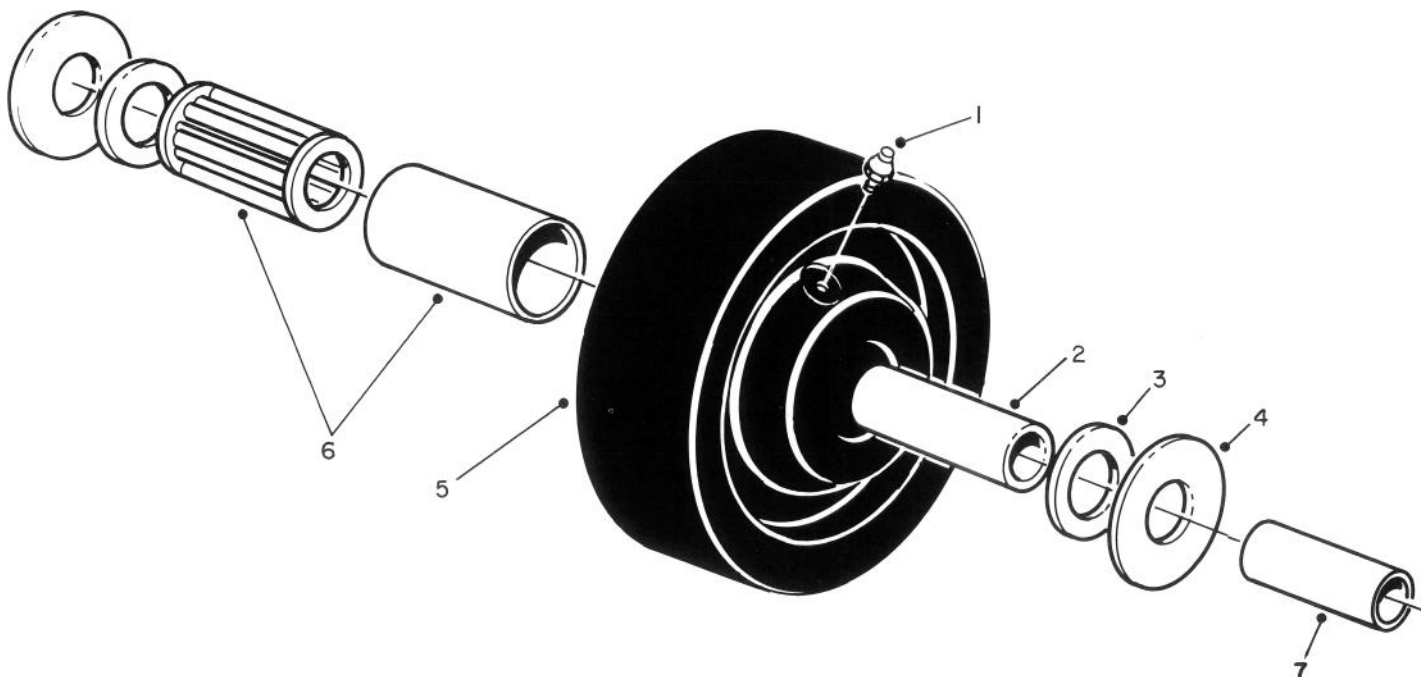
CARRIER FRAME ASSEMBLY

T-0215

Ref. No.	Part No.	Description	No. Used
1	32128-23	Nut - Lock	6
2	74-0160	Frame - Suspension (Incl. Ref. #28)	1
3	3234-6	Screw - Hex. Hd. Flange	6
4	3296-45	Nut - Lock	2
5	74-0310	Shaft - Adjusting	2
6	3218-5	Nut	4
7	41-8440	Washer	2
8	74-0290	Spring - Compression	2
9	256-156	Bushing	2
10	68-8360	Decal - Height of Cut	1
11	74-0340	Cushion - Rubber	2
12	325-19	Screw - Hex. Hd. Cap	2
13	3217-6	Nut	8
14	3256-6	Spacer - Wheel	4
15	62-5580	Bushing	4
16	68-8980	Bushing - Spanner	2

Ref. No.	Part No.	Description	No. Used
17	62-5570	Bearing - Roller	2
18	68-8950	Tube w/Valve	2
19	68-8920	Wheel Half - Female	2
20	68-8970	Tire	2
21	68-8930	Wheel Half - Male	2
22	68-8940	Hub - Center	2
23	302-61	Fitting - Grease	2
24	3256-4	Washer -Lock	8
25	32153-5	Nut - Lock	2
26	74-0250	Fork - Castor	2
27	3-6781	Washer - Thrust	8
28	28-9290	Bushing - Special	4
29	302-5	Fitting - Grease	2
30	32151-91	Ring - Retaining	2
31	74-0940	Decal - Height of Cut	1
*	13-3869	Castor Wheel Assembly (2 Per Carton)	1

*Not Illustrated



T-0220

CASTOR WHEEL ASSEMBLY NO. 27-1050 (Optional)

Ref. No.	Part No.	Description	No. Used
1	305-55	Fitting - Grease	1
2	27-1200	Spanner - Bushing	1
3	27-1180	Retainer - Bearing	2
4	27-1170	Washer - Thrust	2

Ref. No.	Part No.	Description	No. Used
5	27-1190	Wheel	1
6	27-1210	Bearing - Roller	1
*	68-8980	Spanner	1

*Note Used With Castor Fork No. 68-8900

PRODUCT CHANGES

In an effort to make improvements available to TORO owners as quickly as possible, minor changes are incorporated into Toro's products from time to time that do not become immediately shown in the Parts Catalog. If such a change has been made in your unit, which is not reflected in your manual, see your TORO Distributor or his Authorized TORO Service Dealer for information and part numbers.

PRODUCT CHANGES

In an effort to make improvements available to TORO owners as quickly as possible, minor changes are incorporated into Toro's products from time to time that do not become immediately shown in the Parts Catalog. If such a change has been made in your unit, which is not reflected in your manual, see your TORO Distributor or his Authorized TORO Service Dealer for information and part numbers.

IDENTIFICATION AND ORDERING

MODEL AND SERIAL NUMBERS

The Lawnmower has two identification numbers; a model number and a serial number. The two numbers are stamped on a decal which is located on the rear of the housing. In any correspondence concerning the lawnmower, supply model and serial numbers to assure that correct information and replacement parts are obtained.

To order replacement parts from an Authorized TORO Service Dealer, supply the following information:

1. Model and serial number of the lawnmower.
2. Part number, description, and the quantity of part(s) desired.

NOTE: Do not order by reference number if a parts catalog is being used; use the **PART NUMBER**.

IDENTIFICATION AND ORDERING

MODEL AND SERIAL NUMBERS

The Lawnmower has two identification numbers; a model number and a serial number. The two numbers are stamped on a decal which is located on the rear of the housing. In any correspondence concerning the lawnmower, supply model and serial numbers to assure that correct information and replacement parts are obtained.

To order replacement parts from an Authorized TORO Service Dealer, supply the following information:

1. Model and serial number of the lawnmower.
2. Part number, description, and the quantity of part(s) desired.

NOTE: Do not order by reference number if a parts catalog is being used; use the **PART NUMBER**.

IDENTIFICATION AND ORDERING

MODEL AND SERIAL NUMBERS

The Lawnmower has two identification numbers; a model number and a serial number. The two numbers are stamped on a decal which is located on the rear of the housing. In any correspondence concerning the lawnmower, supply model and serial numbers to assure that correct information and replacement parts are obtained.

To order replacement parts from an Authorized TORO Service Dealer, supply the following information:

1. Model and serial number of the lawnmower.
2. Part number, description, and the quantity of part(s) desired.

NOTE: Do not order by reference number if a parts catalog is being used; use the **PART NUMBER**.

IDENTIFICATION AND ORDERING

MODEL AND SERIAL NUMBERS

The Lawnmower has two identification numbers; a model number and a serial number. The two numbers are stamped on a decal which is located on the rear of the housing. In any correspondence concerning the lawnmower, supply model and serial numbers to assure that correct information and replacement parts are obtained.

To order replacement parts from an Authorized TORO Service Dealer, supply the following information:

1. Model and serial number of the lawnmower.
2. Part number, description, and the quantity of part(s) desired.

NOTE: Do not order by reference number if a parts catalog is being used; use the **PART NUMBER**.

- ## IDENTIFICATION AND ORDERING
- ### MODEL AND SERIAL NUMBERS
- The Lawnmower has two identification numbers; a model number and a serial number. The two numbers are stamped on a decal which is located on the rear of the housing. In any correspondence concerning the lawnmower, supply model and serial numbers to assure that correct information and replacement parts are obtained.
- To order replacement parts from an Authorized TORO Service Dealer, supply the following information:
1. Model and serial number of the lawnmower.
 2. Part number, description, and the quantity of part(s) desired.
- NOTE:** Do not order by reference number if a parts catalog is being used; use the **PART NUMBER**.

IDENTIFICATION AND ORDERING

MODEL AND SERIAL NUMBERS

The Lawnmower has two identification numbers; a model number and a serial number. The two numbers are stamped on a decal which is located on the rear of the housing. In any correspondence concerning the lawnmower, supply model and serial numbers to assure that correct information and replacement parts are obtained.

To order replacement parts from an Authorized TORO Service Dealer, supply the following information:

1. Model and serial number of the lawnmower.
2. Part number, description, and the quantity of part(s) desired.

NOTE: Do not order by reference number if a parts catalog is being used; use the **PART NUMBER**.

COUNTRIES OTHER THAN THE UNITED STATES OR CANADA

Customers who have purchased TORO products exported from the United States or Canada should contact their Toro Distributor (Dealer) to obtain guarantee policies for your country, province or state. If for any reason you are dissatisfied with your Distributor's service or have difficulty obtaining guarantee information, contact the TORO importer. If all other remedies fail, you may contact us at The Toro Company.

COUNTRIES OTHER THAN THE UNITED STATES OR CANADA

Customers who have purchased TORO products exported from the United States or Canada should contact their Toro Distributor (Dealer) to obtain guarantee policies for your country, province or state. If for any reason you are dissatisfied with your Distributor's service or have difficulty obtaining guarantee information, contact the TORO importer. If all other remedies fail, you may contact us at The Toro Company.

COUNTRIES OTHER THAN THE UNITED STATES OR CANADA

Customers who have purchased TORO products exported from the United States or Canada should contact their Toro Distributor (Dealer) to obtain guarantee policies for your country, province or state. If for any reason you are dissatisfied with your Distributor's service or have difficulty obtaining guarantee information, contact the TORO importer. If all other remedies fail, you may contact us at The Toro Company.

[illegible]

Compliance with Radio Interference Regulations Certified.
Certifie Conforme au Reglement sur le Brouillage Radioelectrique.

6

Litho in U.S.A.

MAINTENANCE RECORD

[illegible]

MAINTENANCE RECORD

[illegible]