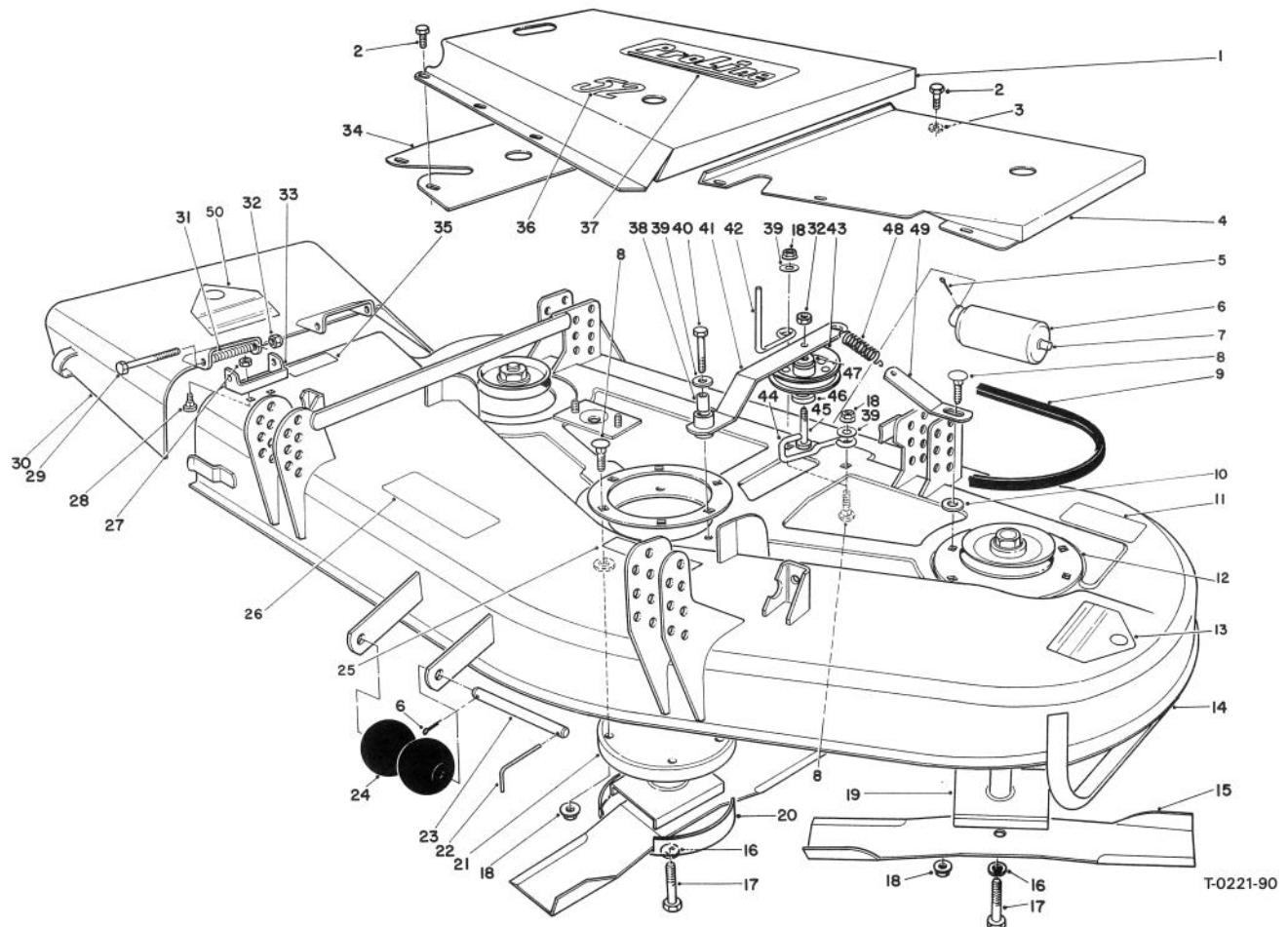


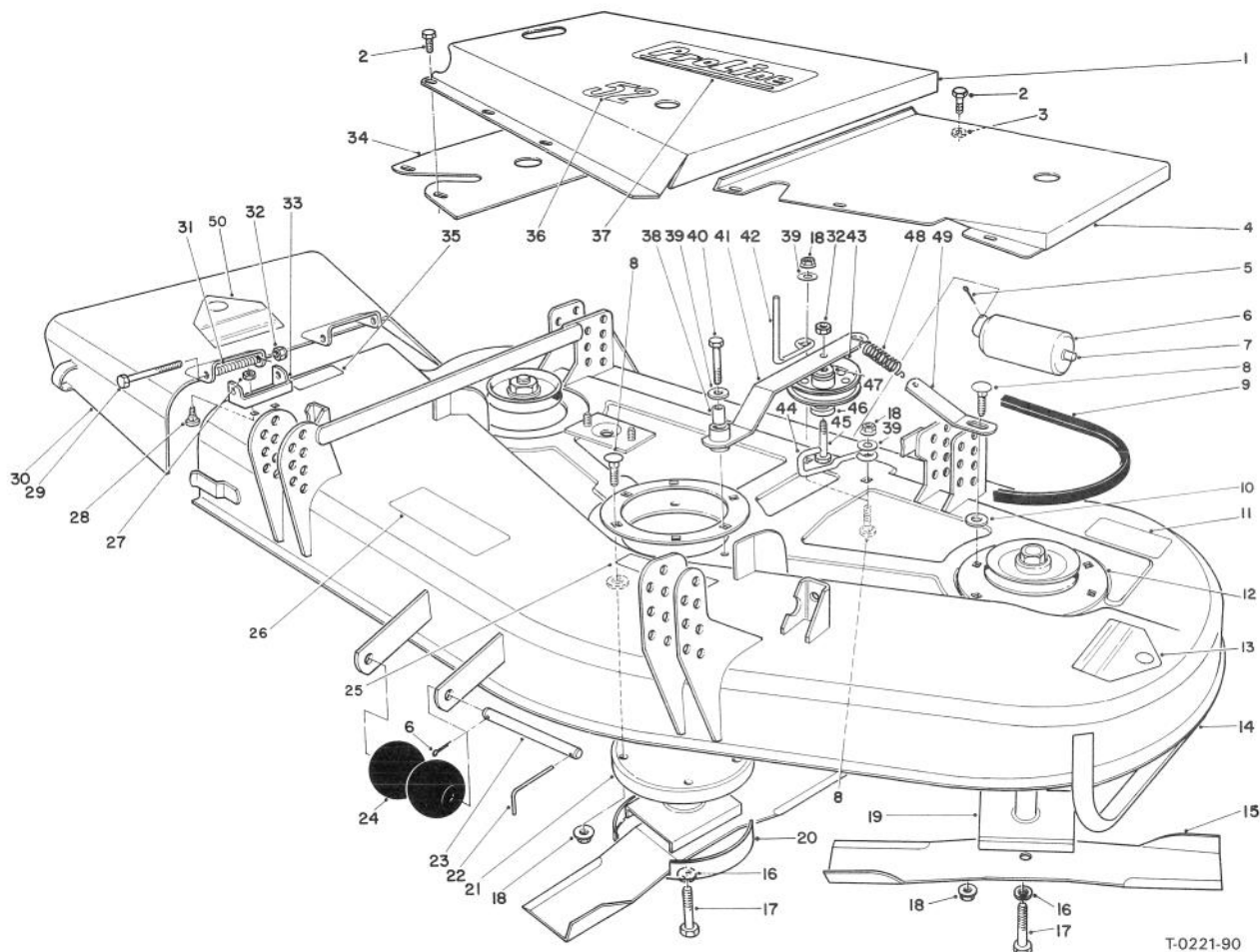
TORO®

MODEL NO. 30152-0000001 & up

**PARTS
CATALOG****52" CUTTING UNIT — WIDE AREA MOWER****CUTTING UNIT ASSEMBLY**

Ref. No.	Part No.	Description	No. Used
1	51-3930	Cover — Center	1
2	46-8560	Screw — Self Tapping	13
3	3256-22	Washer	1
4	51-3910	Cover — Left	1
5	3272-11	Pin — Cotter	3
6	36-1740	Roller — Deck	2
7	40-0340	Shaft — Roller	2
8	3231-22	Bolt — Carriage	20
9	27-1160	Belt — Spindle to Spindle	1
10	3256-2	Washer	A/R
11	68-8340	Decal — Caution	1
12	27-7680	Ring — Deck Support	3
13	43-8480	Decal — Danger	1
14	13-8659	Deck Assembly (Incl. Ref. # 11, 13, 25, 26, 35 & 50)	1

Ref. No.	Part No.	Description	No. Used
15	27-0990	Blade	3
16	3253-27	Washer — Lock	3
17	44-2200	Bolt — Blade	3
18	32128-21	Nut — Flange Lock	21
19	27-0870	Drive Spindle	2
20	72-9361	Cup — Scalp	3
21	54-7781	Drive Spindle Assembly	1
22	57-0690	Cotter Pin — Special	1
23	40-6400	Shaft — Roller	1
24	29-4820	Roller — Deck	2
25	67-5360	Decal — Shield Missing	1
26	66-1340	Decal — Danger	1
27	32152-1	Nut — Lock	4
28	3230-18	Bolt — Carriage	4



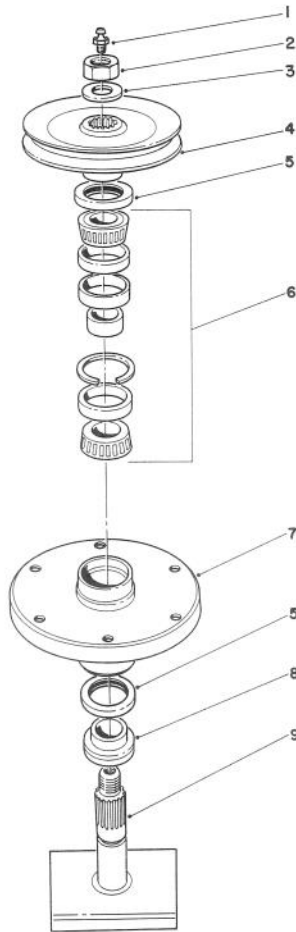
T-0221-90

CUTTING UNIT ASSEMBLY (Continued)

Ref. No.	Part No.	Description	No. Used
29	3211-15	Screw — Hex Head	2
30	13-3949	Deflector — Grass (Incl. Ref. #50)	1
31	40-6230	Spring — Torsion	2
32	3296-5	Nut — Lock	3
33	29-5590	Bracket — Pivot	2
34	51-3890	Cover — Right	1
35	66-6380	Decal — Deflector Missing	1
36	51-3960	Decal — 52	1
37	74-2080	Decal — Proline	1
38	51-3640	Sleeve — Idler Pivot	1
39	3256-24	Washer — Flat	5

Ref. No.	Part No.	Description	No. Used
40	323-11	Screw — Hex Head	1
41	55-7640	Arm — Idler	1
42	52-4780	Rod — Belt	2
43	65-5940	Pulley — Idler	1
44	55-7620	Guide — Belt	1
45	55-7630	Screw — Hex Head	1
46	65-5950	Bushing — Pulley	1
47	7-0081	Washer — Special	1
48	51-3650	Spring — Idler	1
49	55-7650	Plate — Spring Support	1
50	54-9220	Decal — Danger	1
*	56-2390	Blade — High Sail (Optional)	3

* Not Illustrated

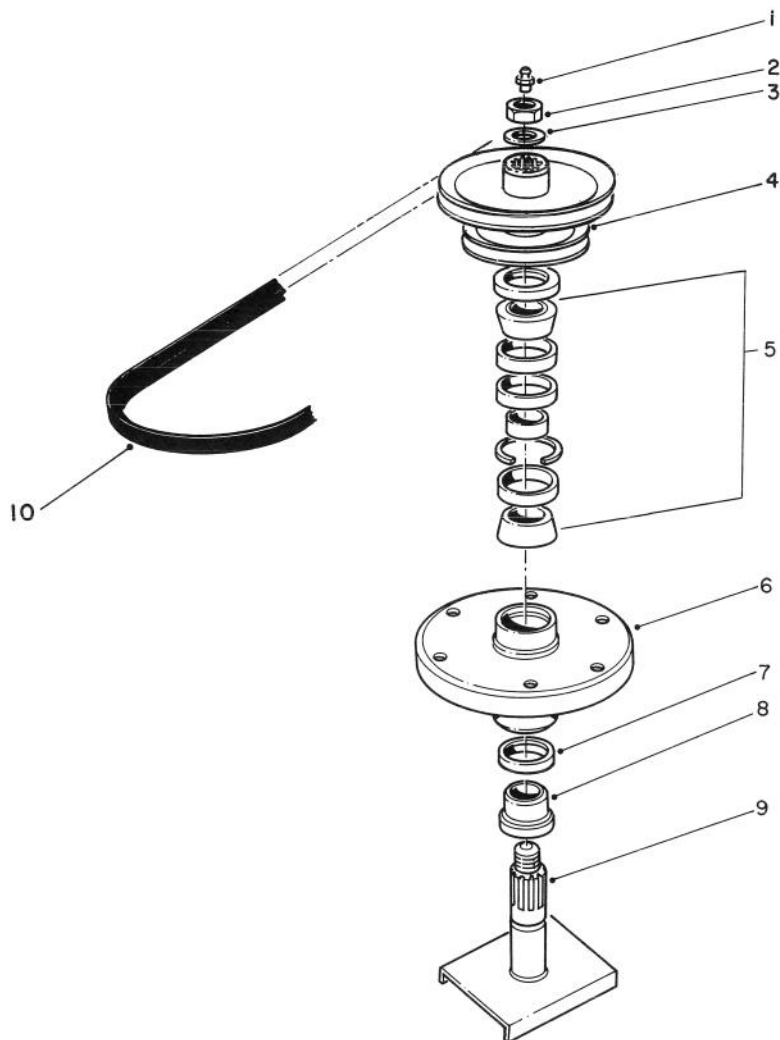


T-0111-90

DRIVE SPINDLE NO. 27-0870

Ref. No.	Part No.	Description	No. Used
1	302-2	Grease Fitting	1
2	32146-20	Nut — Locking Jam	1
3	7-4150	Washer	1
4	27-0970	Pulley & Hub	1
5	253-139	Seal — Wave	2

Ref. No.	Part No.	Description	No. Used
6	46-8530	Bearing Assembly	1
7	61-4160	Spindle Housing	1
8	27-0950	Spacer — Spindle Bearing	1
9	27-0920	Spindle Shaft	1

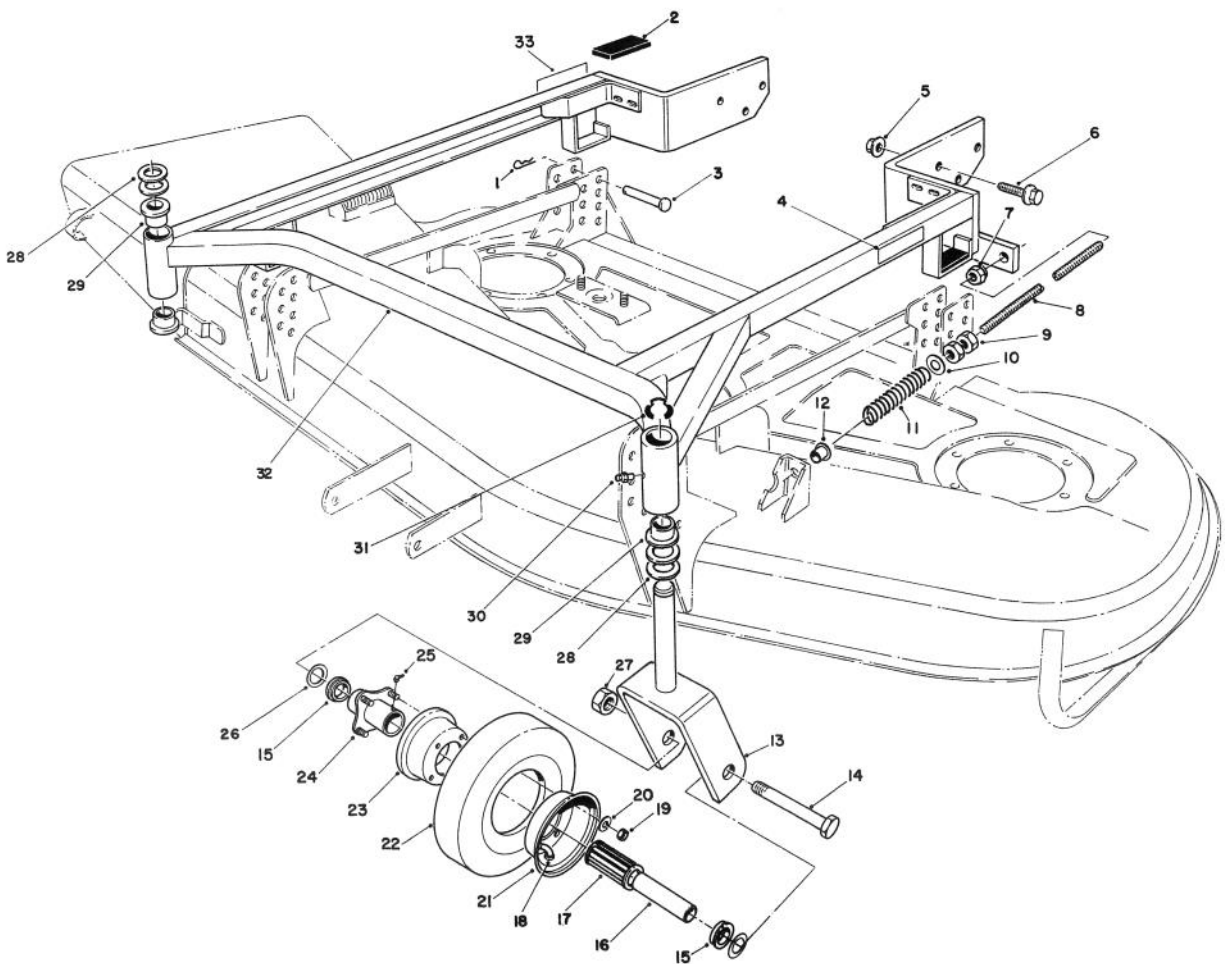


T-0218-90

DRIVE SPINDLE NO. 54-7781

Ref. No.	Part No.	Description	No. Used
1	302-2	Fitting — Grease	1
2	32146-20	Nut — Hex Jam	1
3	7-4150	Washer	1
4	55-7610	Pulley Assembly	1
5	46-8530	Bearing Assembly	1

Ref. No.	Part No.	Description	No. Used
6	61-4160	Spindle Housing	1
7	253-139	Seal — Wave	2
8	27-0950	Spacer — Spindle Bearing	1
9	51-3551	Spindle Shaft	1
10	55-7660	V-Belt — Engine, to Deck	1

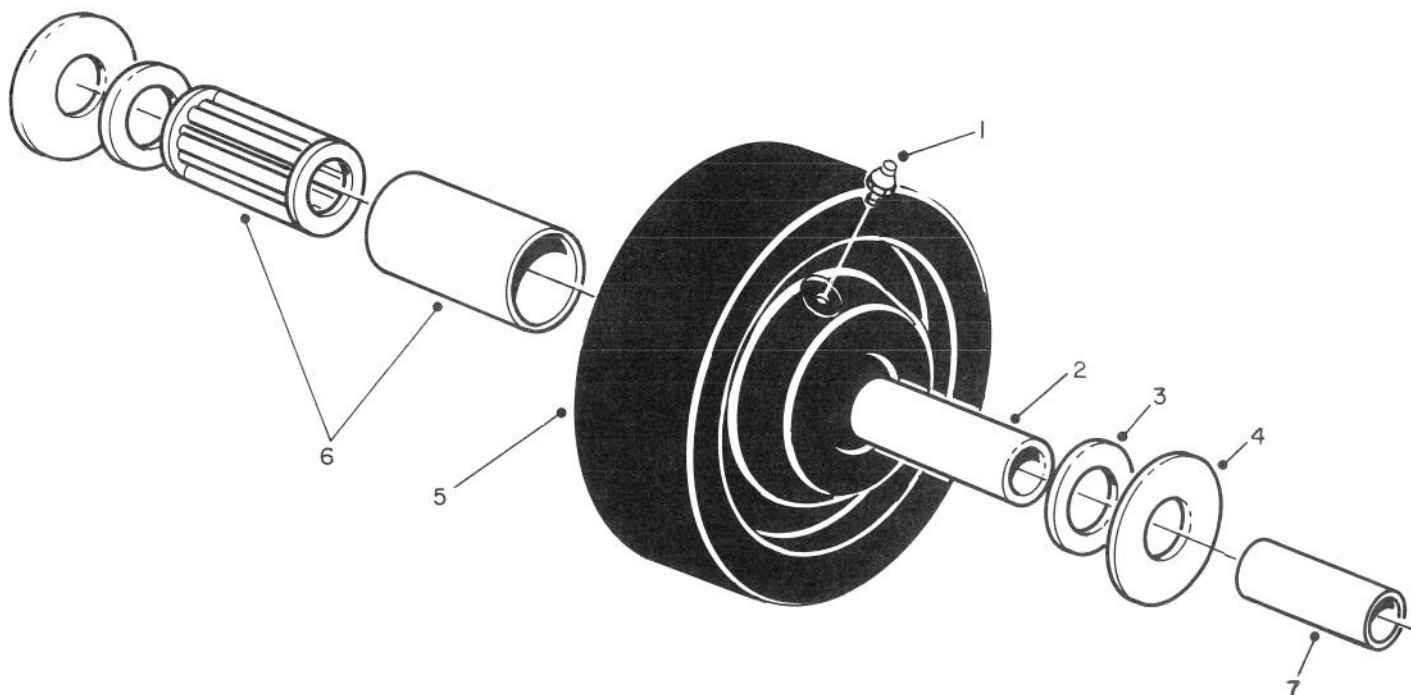


T-0222-90

CARRIER FRAME ASSEMBLY

Ref. No.	Part No.	Description	No. Used	Ref. No.	Part No.	Description	No. Used
1	3290-355	Pin — Hair	4	19	3217-6	Nut — Hex	8
2	74-0350	Cushion — Rubber	4	20	3253-4	Washer — Lock	8
3	283-55	Pin — Clevis	4	21	68-8930	Wheel Half — Male	2
4	68-8360	Decal — Height of Cut	1	22	68-8960	Tire	2
5	32128-23	Locknut	6	23	68-8920	Wheel Half — Female	2
6	3234-6	Screw — Hex Flange	6	24	68-8940	Hub — Centered	2
7	3296-45	Nut — Lock	2	25	302-61	Grease Fitting	2
8	74-0310	Shaft — Adjusting	2	26	3256-6	Washer	4
9	3218-5	Nut — Jam	4	27	32153-5	Locknut	2
10	41-8440	Washer	2	28	3-6781	Washer — Thrust	8
11	74-0290	Spring — Compression	2	29	28-9290	Bushing — Special	4
12	256-156	Bushing	2	30	302-5	Grease Fitting	2
13	74-0250	Castor — Fork	2	31	32151-91	Ring — External	2
14	325-19	Screw — Cap Hex Head	2	32	74-0190	Frame — Carrier (Incl. Ref. #30)	1
15	62-5580	Bushing	4	33	74-0940	Decal — Height of Cut	1
16	68-8980	Spanner Bushing	2	*	13-3869	Castor Wheel Assembly (2 per carton)	1
17	62-5570	Roller Bearing	2				
18	68-8950	Tube w/Valve	2				

* Not Illustrated



T-0220-90

CASTOR WHEEL ASSEMBLY NO. 27-1050 (Optional)

Ref. No.	Part No.	Description	No. Used
1	302-55	Grease Fitting	1
2	27-1200	Spanner Bushing	1
3	27-1180	Bearing Retainer	2

Ref. No.	Part No.	Description	No. Used
4	27-1170	Thrust Washer	2
5	27-1190	Wheel	1
6	27-1210	Roller Bearing	1
7*	68-8980	Spanner	1

* Note: Spanner to be used when assembled with Castor Fork #68-8900.

The Toro Promise

A ONE YEAR LIMITED WARRANTY

The Toro Company promises to repair your TORO Product if defective in materials or workmanship. The following time periods from the date of purchase apply:

Commercial Products 1 Year

The costs of parts and labor are included, but the customer pays the transportation costs on walk rotary mowers with cutting unit width of less than 25".

If you feel your TORO product is defective and wish to rely on The Toro Promise, the following procedure is recommended:

1. Contact your Authorized TORO Distributor or Proline Service Dealer (the Yellow Pages of your telephone directory is a good reference source).
2. The Toro Distributor or Proline Service Dealer will advise on the arrangements that can be made to inspect and repair your product.
3. The TORO Distributor or Proline Service Dealer will inspect the product and advise you whether the product is defective and, if so, make all repairs necessary to correct the defect without an extra charge to you.

If for any reason you are dissatisfied with the distributor's analysis of the defect or the service performed, you may contact us.

Write:

TORO Consumer Products Service Department
8111 Lyndale Avenue South
Minneapolis, Minnesota 55420

The above remedy of product defects through repair by an Authorized TORO Distributor or Proline Service Dealer is the purchaser's sole remedy for any defect.

THERE IS NO OTHER EXPRESS WARRANTY. ALL IMPLIED WARRANTIES OF MERCHANTABILITY AND FITNESS FOR USE ARE LIMITED TO THE DURATION OF THE EXPRESS WARRANTY.

Some states do not allow limitations on how long an implied warranty lasts, so the above limitations may not apply to you.

This Warranty applies only to parts or components which are defective and does not cover repairs necessary due to normal wear, misuse, accidents, or lack of proper maintenance. Regular, routine maintenance of the unit to keep it in proper condition is the responsibility of the owner.

All warranty repairs reimbursable under the Toro Promise must be performed by an Authorized TORO Proline Service Dealer or Distributor using Toro approved replacement parts.

Repairs or attempted repairs by anyone other than an Authorized TORO Distributor or Proline Service Dealer are not reimbursable under the Toro Promise. In addition, these unauthorized repair attempts may result in additional malfunctions, the correction of which is not covered by warranty.

THE TORO COMPANY IS NOT LIABLE FOR INDIRECT, INCIDENTAL OR CONSEQUENTIAL DAMAGES IN CONNECTION WITH THE USE OF THE PRODUCT INCLUDING ANY COST OR EXPENSE OF PROVIDING SUBSTITUTE EQUIPMENT OR SERVICE DURING PERIODS OF MALFUNCTION OR NON-USE.

Some states do not allow the exclusion or limitation of incidental or consequential damages, so the above limitation or exclusion may not apply to you.

This warranty gives you specific legal rights, and you may also have other rights which vary from state to state.

COUNTRIES OTHER THAN THE UNITED STATES OR CANADA

Customers who have purchased TORO products exported from the United States or Canada should contact their TORO Distributor (Dealer) to obtain guarantee policies for your country, province or state. If for any

reason you are dissatisfied with your Distributor's service or have difficulty obtaining guarantee information, contact the TORO importer. If all other remedies fail, you may contact us at The Toro Company.

[illegible]