



## Roll-Over Protection System Multi-Pro® 1200/1250 Turf Sprayer

Model No. 41361 - 240000001 and up.

### Parts Catalog

#### Ordering Replacement Parts

To order replacement parts, please supply the part number, the quantity, and the description of each part desired.

#### Understanding Reference Numbers

Each Identified part in an illustration has a reference number. The reference number for a part also appears in the parts list, along with other information about the part.

This catalog uses two special reference number formats, one to indicate parts in a service assembly and another to indicate the quantity of a given part in an illustration.

#### Service Assembly Reference Numbers

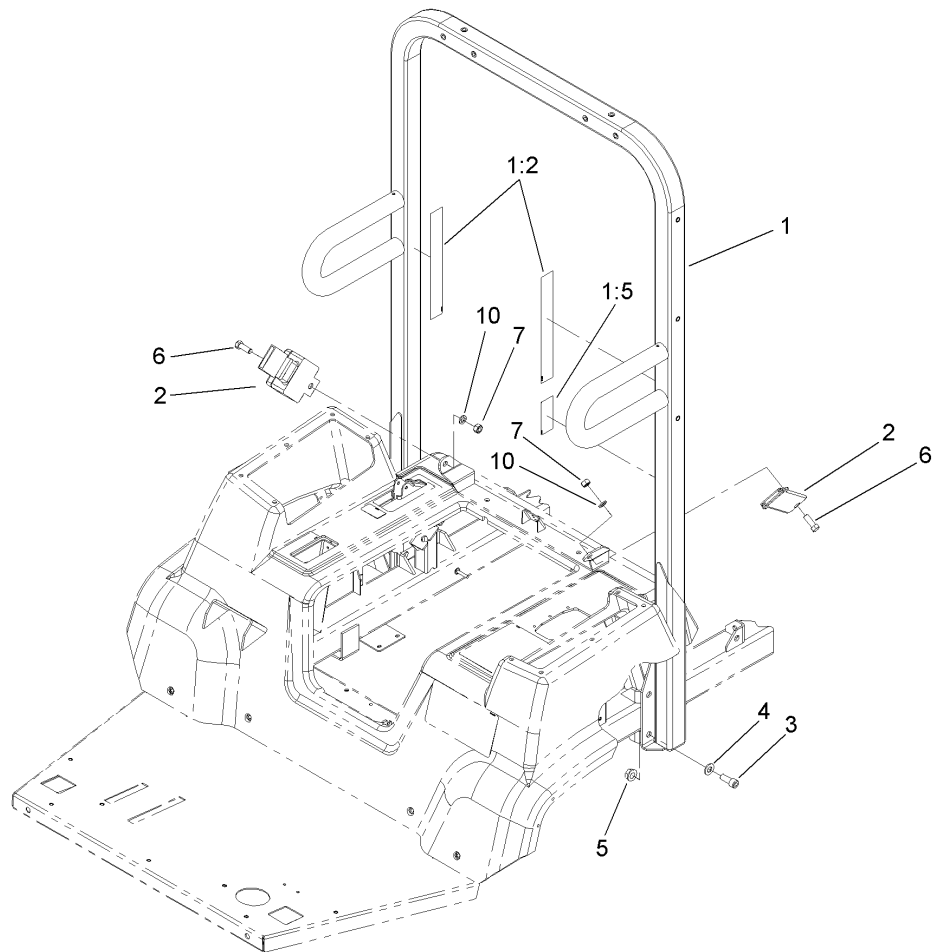
Parts in service assemblies have reference numbers in the form a:b. The a represents the reference number of the entire service assembly and the b represents a sequential number unique to each part within the service assembly.

For example, a wheel assembly might be identified by reference number 6, the tire by 6:1, the valve by 6:2, and the wheel by 6:3. When you order the assembly identified by reference number 6, you receive all parts identified by reference numbers 6:1, 6:2, and 6:3. However, you may also order any part individually. Reference numbers of this type appear in illustrations and in part lists.

#### Reference Numbers Indicating Quantity

In an illustration, if a reference number indicates more than one part, the reference number has the form nX y. The n represents the quantity of the part, the X is the multiplication symbol, and the y represents the reference number.

For example, in an illustration, the reference number 2X 37 means that two of the parts identified by reference number 37 are indicated.



## Roll-Over-Protection-System Assembly

Ref	Part No.	Qty.	Description				
1	104-8976	1	ROPS Bar ASM				
1:2	104-8982	2	Decal-Warning				
1:5	93-9850	1	Decal-Roll Over				
2	110-9720	1	Seat Belt ASM				
3	3274-89	8	Screw-HSH				
4	3256-26	8	Washer-Flat				
5	32128-49	8	Nut-HHF				
6	324-5	2	Screw-HH				
7	3217-8	2	Nut-Hex				
10	3253-6	2	Washer-Lock				