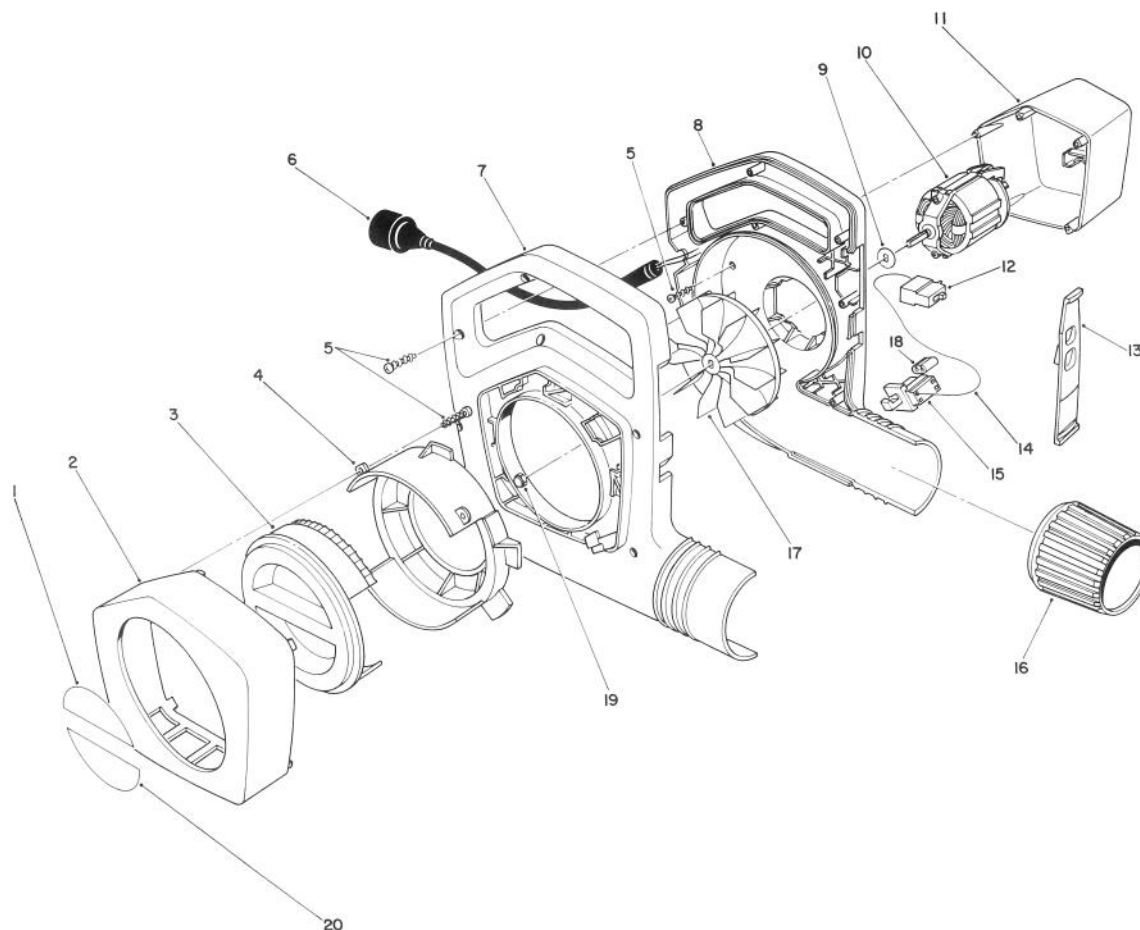


TORO®

MODEL NO. 51570-9000001 & UP

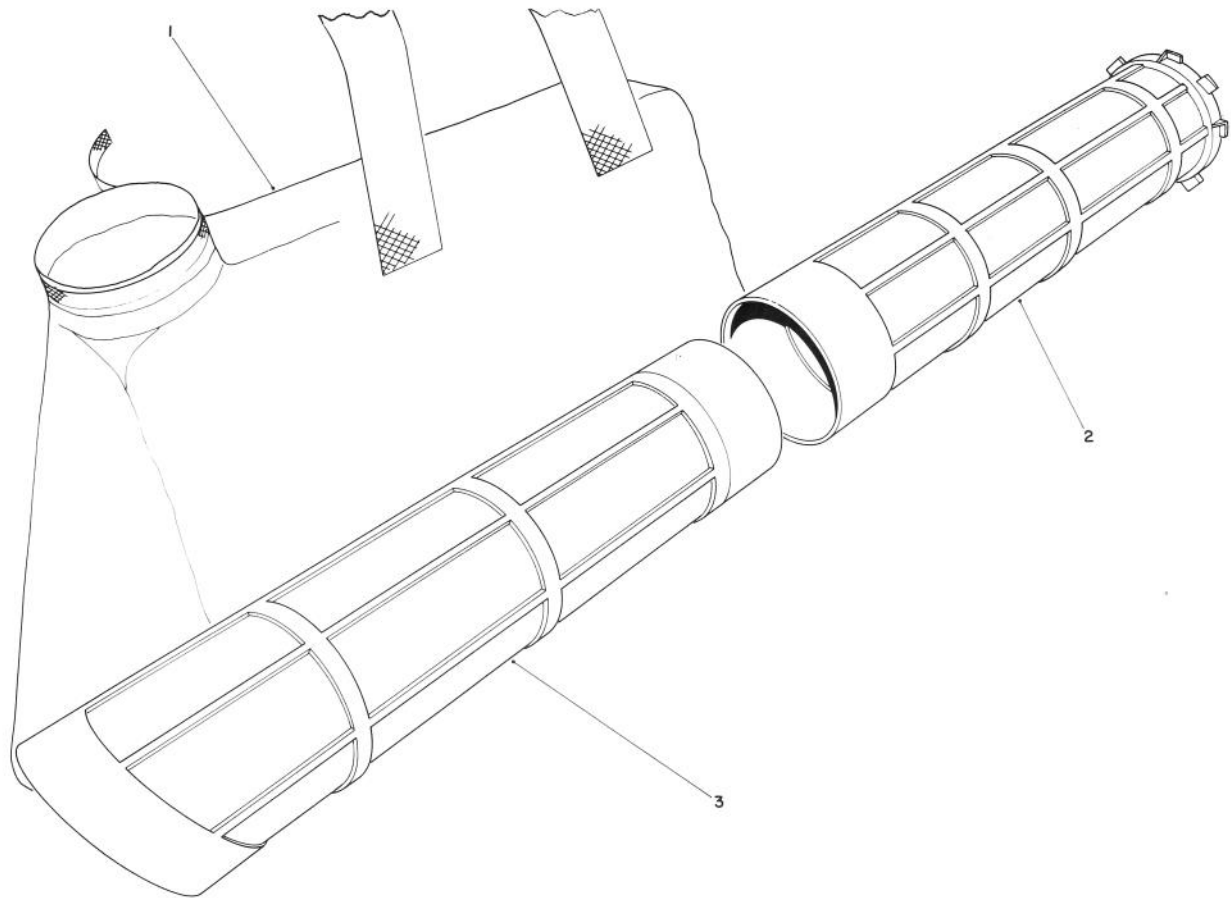
**PARTS
CATALOG****YARD BLOWER VAC**

C-0133-89

BLOWER ASSEMBLY

Ref. No.	Part No.	Description	No. Used
1	64-8930	Decal — Upper Choke	1
2	57-1050	Ring — Trim	1
3	57-1020	Adjuster — Choke	1
4	57-1040	Ring — Tab	1
5	32104-121	Screw	17
6	42-0772	Cord — Power Supply	1
7	60-9611	Housing Assembly — R.H.	1
8	61-8430	Housing — L.H.	1
9	57-4270	Washer — Impeller (used on units with serial no. 9000001 thru 9000469)	2
9	57-4270	Washer — Impeller (used on units with serial no. 9000470 & up)	1
10	57-5960	Motor (used on units with serial no. 9000001 thru 9000469)	1
10	57-5961	Motor (used on units with serial no. 9000470 & up)	1

Ref. No.	Part No.	Description	No. Used
11	57-1070	Cover — Motor (used on units with serial no. 9000001 thru 9000469)	1
11	57-1071	Cover — Motor (used on units with serial no. 9000470 & up)	1
12	57-5890	Switch — On/Off	1
13	57-5920	Cam — Switch — On/Off	1
14	57-4280	Wire — Internal	2
15	57-5910	Switch — Interlock	1
16	57-3260	Collar — Output	1
17	57-3860	Impeller (used on units with serial no. 9000001 thru 9000469)	1
17	57-3861	Impeller (used on units with serial no. 9000470 & up)	1
18	64-8990	Plug — Dust	1
19	32111-8	Nut — Cap	1
20	64-8940	Decal — Lower Choke	1



C-0135-89

RAKE-O-VAC BAGGING KIT & MODEL 51531

Ref. No.	Part No.	Description	No. Used
1	57-5950	Bag — Vacuum	1
2	57-6260	Tube — Upper Vacuum	1

Ref. No.	Part No.	Description	No. Used
3	57-6250	Tube — Lower Vacuum	1

THE TORO PROMISE

A FULL ONE YEAR WARRANTY

The Toro Company warrants your TORO Product against defects in material or workmanship. During the warranty period, Toro will, at its option, replace a defective product with a new or rebuilt unit, or will repair or replace any defective parts. The following time periods from the date of purchase apply:

Residential 1 Year
Residential Products Used Commercially 45 Days

The cost of replacement or repair is included, but the customer pays the transportation costs.

Should you feel your TORO Product is defective and wish to rely on The Toro Promise, you may return it to:

1. The original place of purchase
OR
2. A TORO Electrical Service Dealer
OR
3. **The Toro Service Center**
5300 Shoreline Blvd.
Mound, MN 55364
(Postage Prepaid)

Upon return of your unit to one of the above, it will be inspected and you will be advised whether the product is defective. If defective, arrangements will be made for repair or replacement without extra charge to you.

If for any reason you are dissatisfied with the analysis of the defect or the service performed, you may contact us.

Write: **TORO Customer Service Department**
Home Improvement Division
8111 Lyndale Avenue South
Minneapolis, MN 55420

THERE IS NO OTHER EXPRESS WARRANTY

THE TORO COMPANY IS NOT LIABLE FOR INDIRECT OR CONSEQUENTIAL DAMAGES IN CONNECTION WITH THE USE OF THE PRODUCT.

Some states do not allow the exclusion or limitation of incidental or consequential damages, so the above limitation or exclusion may not apply to you.

This Warranty applies only to parts or components which are defective and does not cover repairs necessary due to normal wear, misuse, accidents, or lack of proper maintenance. Regular, routine maintenance of the unit to keep it in proper operating condition is the responsibility of the owner.

All warranty repairs reimbursable under The Toro Promise must be performed by a TORO Electrical Service Dealer using Toro approved replacement parts.

Repairs or attempted repairs by anyone other than a TORO Electrical Service Dealer are not reimbursable under The Toro Promise. In addition, these unauthorized repair attempts may result in additional malfunctions, the correction of which is not covered by warranty.

This warranty gives you specific legal rights, and you may also have other rights which vary from state to state.

COUNTRIES OTHER THAN THE UNITED STATES OR CANADA

Customers who have purchased TORO products exported from the United States or Canada should contact their TORO Distributor (Dealer) to obtain guarantee policies for your country, province or state. If for any reason you are dissatisfied

with your Distributor's service or have difficulty obtaining guarantee information, contact the TORO importer. If all other remedies fail, you may contact us at The Toro Company.