



Hitch Tow Bar Kit

For Sand Pro® 3040 and 5040 Traction Unit

Model No. 110–1375

Installation Instructions

Note: Determine the left and right sides of the machine from the normal operating position.

Installation

Step

1

Mounting the Tow Bar

Parts needed for this step:

1	Tow bar assembly
---	------------------

Procedure

Note: The hitch tow bar kit is used in conjunction with the attachment adapter on a tooth rake or rear broom. A Lift Arm Adapter kit, Part No. 108-9427 may be obtained for use instead of using the attachment adapter.

1. Lower the attachment to the ground.
2. Disconnect any attachment chains from the attachment adapter (Figure 1 from the attachment adapter). The lift arm does not need to be removed from the attachment adapter.

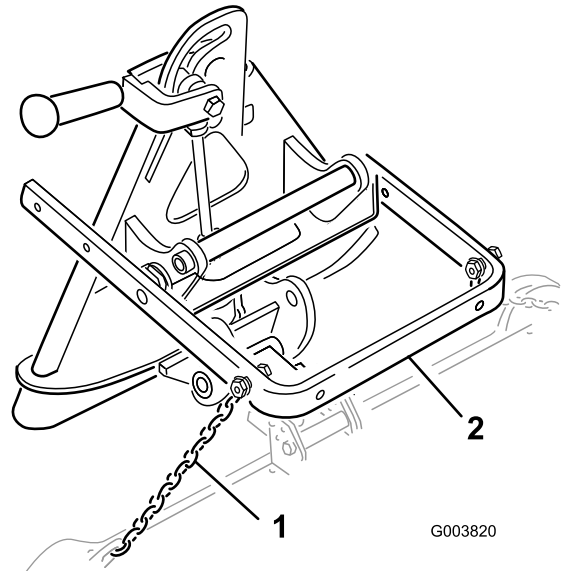


Figure 1

1. Attachment chains
2. Attachment adapter lift arm

3. Remove the clevis pin securing the attachment to the attachment adapter (Figure 2).

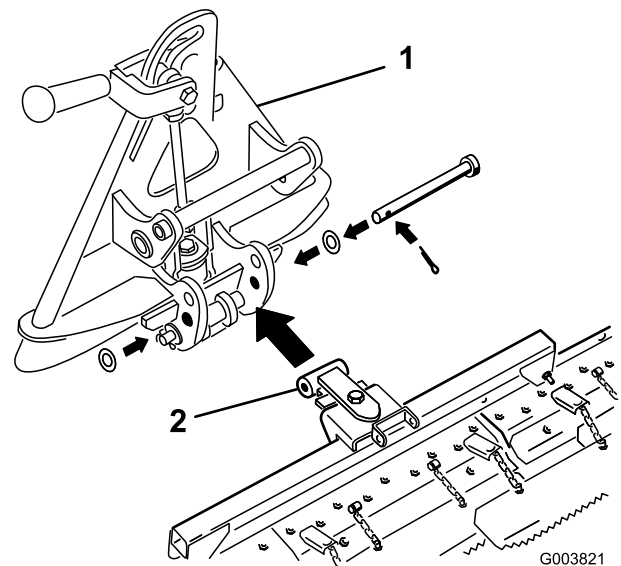


Figure 2

1. Attachment adapter
2. Attachment

4. Mount the hitch to the attachment adapter with the 2 clevis pins and cotter pins included in the kit (Figure 3).

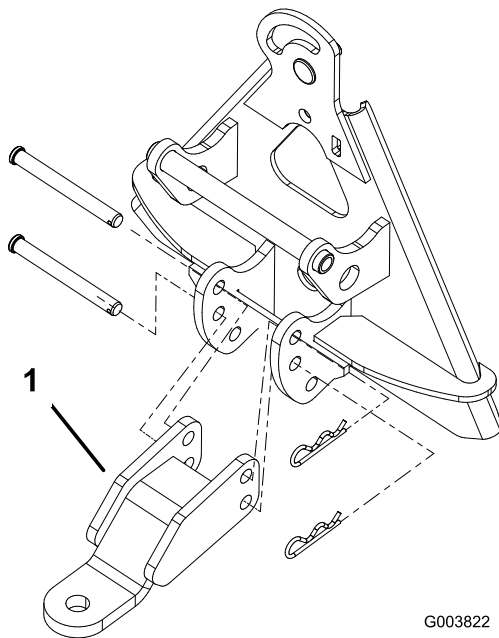


Figure 3

1. Hitch

Step 2

Reading/Storing the Documentation

Parts needed for this step:

1	<i>Installation Instructions</i>
1	<i>Parts Catalog</i>

Procedure

1. Read the documentation.
2. Store the documentation in a safe place.

Operation

Training Period

Maximum GVW (Gross Vehicle Weight) is 1539 lb. (698 kg). This weight includes all attachments mounted on the traction unit.

The tongue weight should be about 10 to 15% of the Gross Trailer Weight. Use the following table as a guide to determine maximum trailer weight.

Traction Unit Configuration	Maximum Trailer Weight
No attachments	410 lb (186 kg)
Front plow	307 lb. (139 kg)
Front plow, midmount toolbar system and the remote hydraulic kit	257 lb. (116 kg)

Exceeding the recommended trailer weight may result in the loss of braking, poor machine handling, damage to the machine, injury or possible death to the operator. Always use caution when trailering.

Avoid parking on a hill with a trailer mounted to the traction unit. If you must park on a hill, engage the parking brake and block the trailer tires.