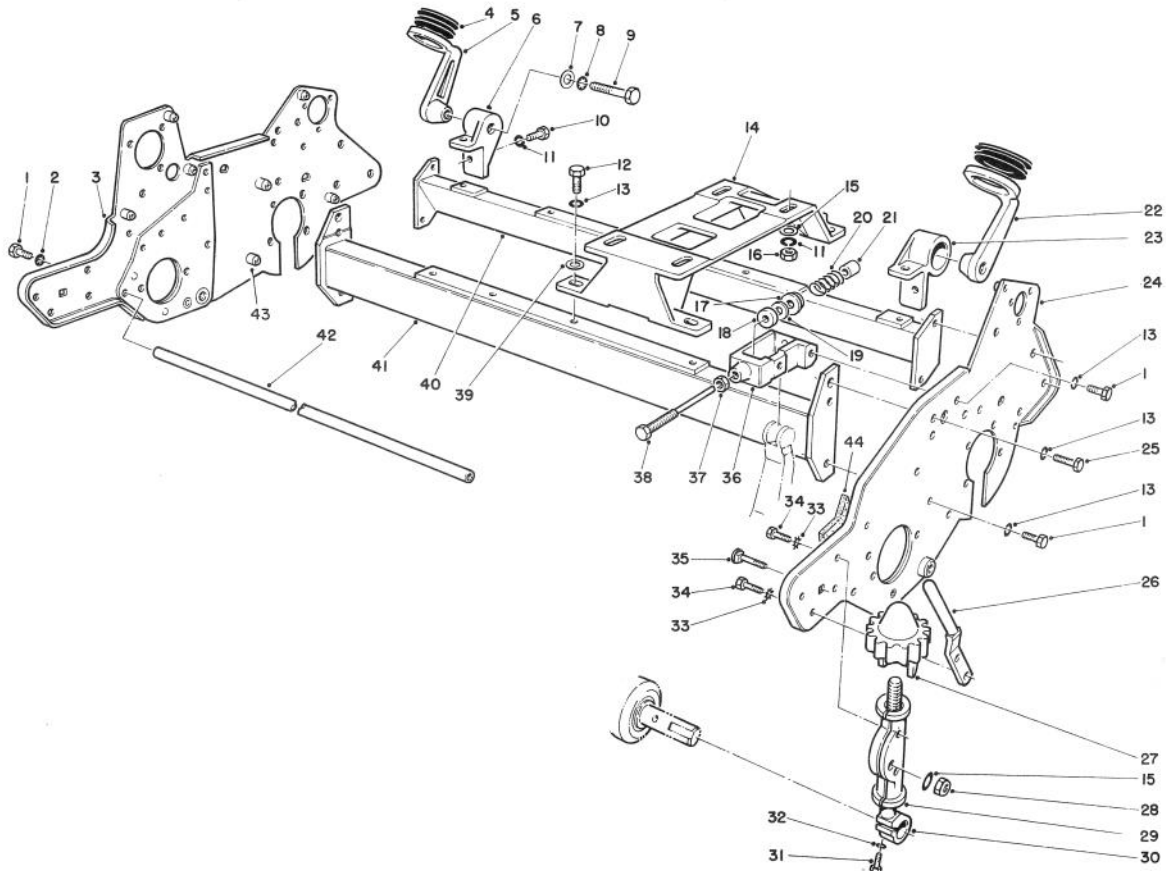


**TORO**<sup>®</sup>

MODEL NO. 04050-00001 &amp; UP

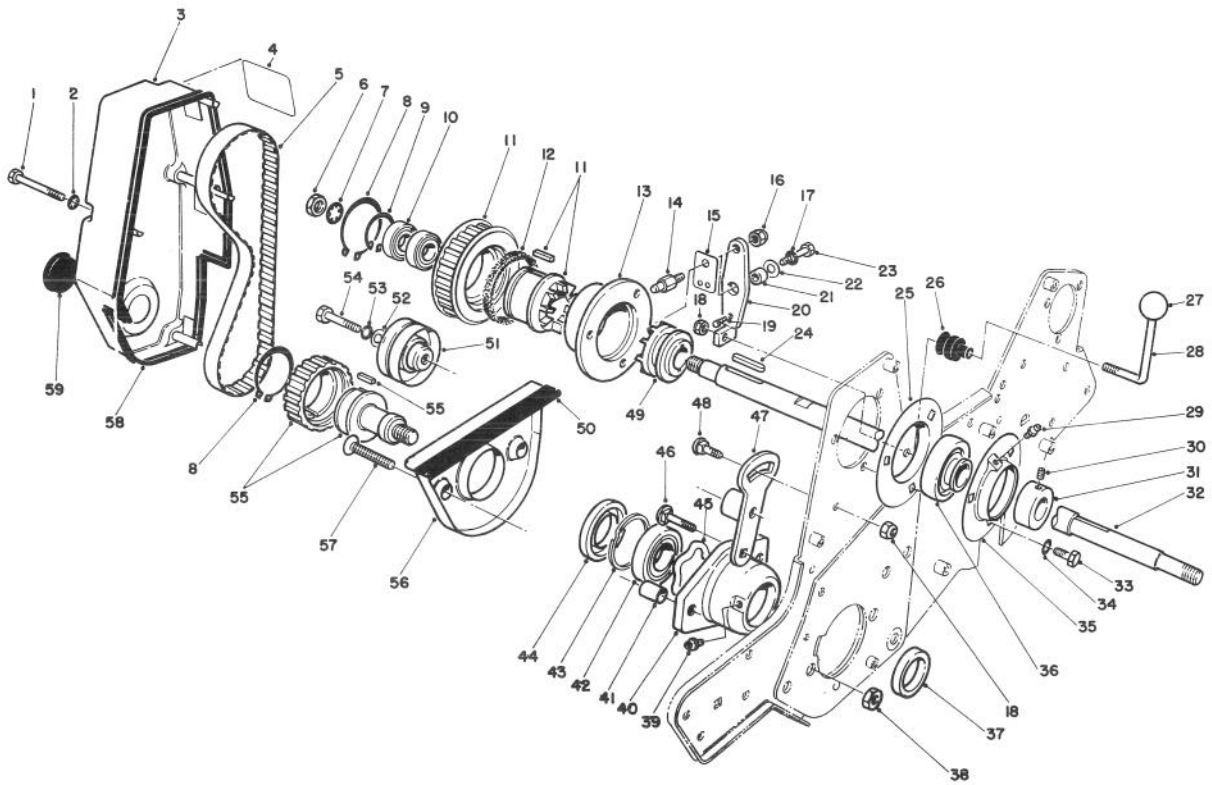
**PARTS  
CATALOG****GR 1000 WALK GREENSMOWER**

T-0943-90

**FRAME ASSEMBLY**

Ref. No.	Part No.	Description	No. Used
1	323-4	Screw Cap, Hex Hd	12
2	3254-6	Washer - Lock, Int. Tooth	2
3	65-6120	Plate - Side, RH W.A.	1
4	65-7510	Grommet - Handle	2
5	65-7480	Arm - Handle, RH	1
6	65-7490	Socket - Handle, RH	1
7	3256-26	Washer - Flat	2
8	3254-4	Washer - Lock, Int. Tooth	2
9	325-7	Screw - Cap, Hex Hd	2
10	322-4	Screw - Cap, Hex Hd	4
11	3253-4	Washer - Lock	8
12	323-5	Screw - Cap, Hex Hd	4
13	3253-21	Washer - Lock	14
14	65-6110	Base - Engine	1
15	3256-23	Washer - Flat	6
16	3217-6	Nut Full	4
17	65-6380	Collar - Thrust	2
18	249-46	Collar - Plain	2
19	65-6390	Washer - Thrust	2
20	65-6400	Spring - Compression	2
21	65-6360	Support - Spring	2
22	65-7470	Arm - Handle, LH	1

Ref. No.	Part No.	Description	No. Used
23	65-7500	Arm - Socket, LH	1
24	65-6180	Plate - Side, LH W.A.	1
25	323-18	Screw - Cap, Hex Hd	2
26	65-7250	Rod - Mounting, Grass Catcher	2
27	10-5040	Knob - Height Adj.	2
28	3296-29	Nut - Lock	2
29	10-5060	Bracket - H.O.C.	2
30	65-9500	Screw - Roller, Adj.	2
31	321-4	Screw - Cap, Hex Hd	2
32	3253-3	Washer - Lock	2
33	3255-8	Washer - Lock, Ext. Tooth	8
34	322-2	Screw - Cap, Hex Hd	2
35	3230-5	Bolt - Carriage	2
36	65-6350	Frame - Adjuster	2
37	3220-5	Nut - Jam	2
38	65-6370	Screw - Adjusting	2
39	3256-24	Washer - Flat	4
40	65-6050	Angle - Frame, Rear	1
41	65-6010	Tube - Frame, Front	1
42	65-6160	Rod - Frame, Support	1
43	32148-6	Insert - Threaded	12
44	65-8180	Seal - Grass Catcher	1

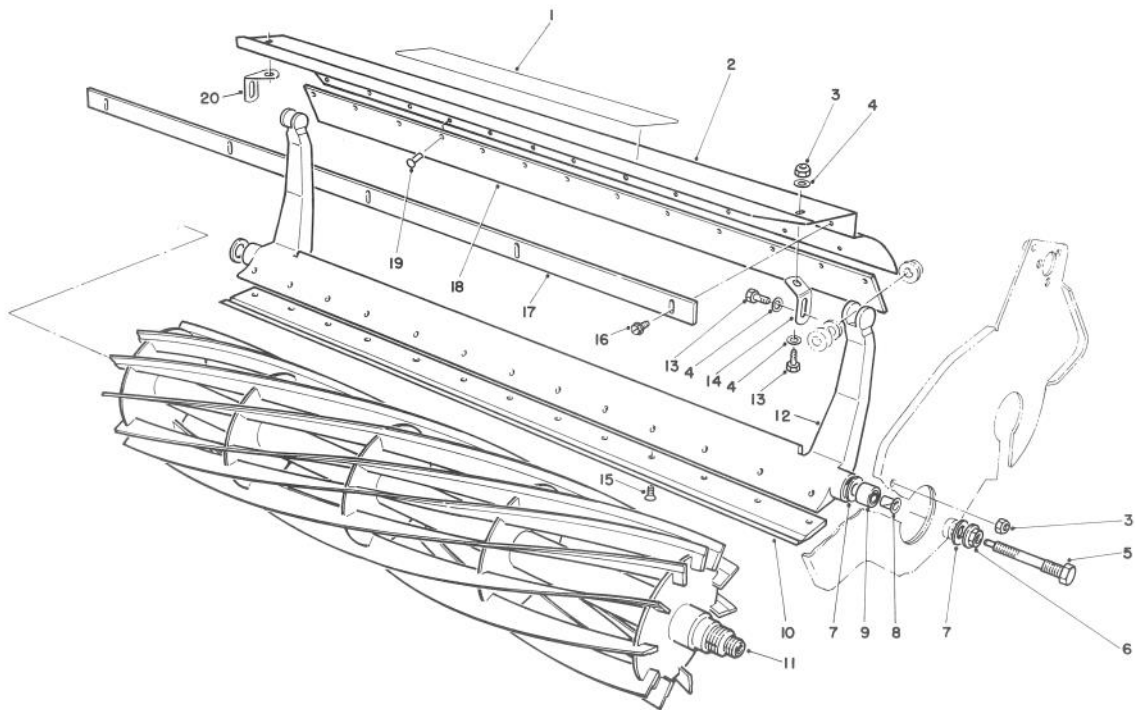


T-0949-90

## REEL DRIVE ASSEMBLY

Ref. No.	Part No.	Description	No. Used
1	321-23	Screw — Cap, Hex Hd	4
2	3254-8	Washer — Lock, Int. Tooth	4
3	65-7140	Cover — Reel, Drive W.A.	1
4	65-7660	Decal — Reel Drive	1
5	65-6200	Belt — Drive, Reel	1
6	3220-5	Nut — Jam	1
7	3254-4	Washer — Lock, Int. Tooth	1
8	32151-95	Ring — Retaining, External	2
9	32151-89	Ring — Retaining, Internal	1
10	251-336	Bearing	2
11	13-7919	Clutch & Pulley Assembly (Incl. Ref. #8)	1
12	65-6970	Seal — Felt	1
13	65-6920	Housing — Clutch	1
14	65-7020	Pin — Actuator	1
15	65-6290	Spring — Detent, Clutch	1
16	3296-42	Nut — Lock	1
17	3253-3	Washer — Lock	1
18	3296-29	Nut — Lock	2
19	3259-15	Screw — Drive	1
20	65-7030	Lever — Clutch, W.A.	1
21	65-6280	Spacer	1
22	3290-414	Washer	1
23	321-4	Screw — Cap, Hex Hd	1
24	65-6930	Key — Square	2
25	65-6710	Flangette	1
26	65-7310	Boot	1
27	233-17	Knob	1
28	65-6300	Lever	1
29	302-65	Fitting — Grease	1
30		Screw — Set	1

Ref. No.	Part No.	Description	No. Used
31		Collar — Locking	1
32	65-6340	Shaft — Power	1
33	322-3	Screw — Cap, Hex Hd	3
34	3253-4	Washer — Lock	3
35	65-6700	Flangette	1
36	251-343	Bearing (Incl. Ref. #30 & 31)	1
37	253-96	Seal	1
38	32152-2	Nut	2
39	302-5	Fitting — Grease	1
40	65-6090	Housing — Bearing	1
41	65-8290	Standoff — Cover	2
42	251-342	Bearing — Self Aligning	1
43	32151-92	Ring — Retaining	1
44	253-163	Seal	1
45	3290-485	Washer — Wave	1
46	3230-2	Bolt — Carriage	1
47	65-6310	Bracket — Reel Idler, W.A.	1
48	3230-20	Bolt — Carriage	1
49	65-6940	Slider	1
50	65-7131	Trim	1
51	65-6330	Pulley	1
52	3256-24	Washer — Flat	1
53	3253-21	Washer — Lock	1
54	323-8	Screw — Cap, Hex Hd	1
55	13-7929	Pulley & Drive Assembly (Incl. Ref. #8)	1
56	65-7190	Cover — Arm, Groomer	1
57	3289-23	Screw — Flat Hd	2
58	65-7220	Trim	1
59	237-160	Plug	1



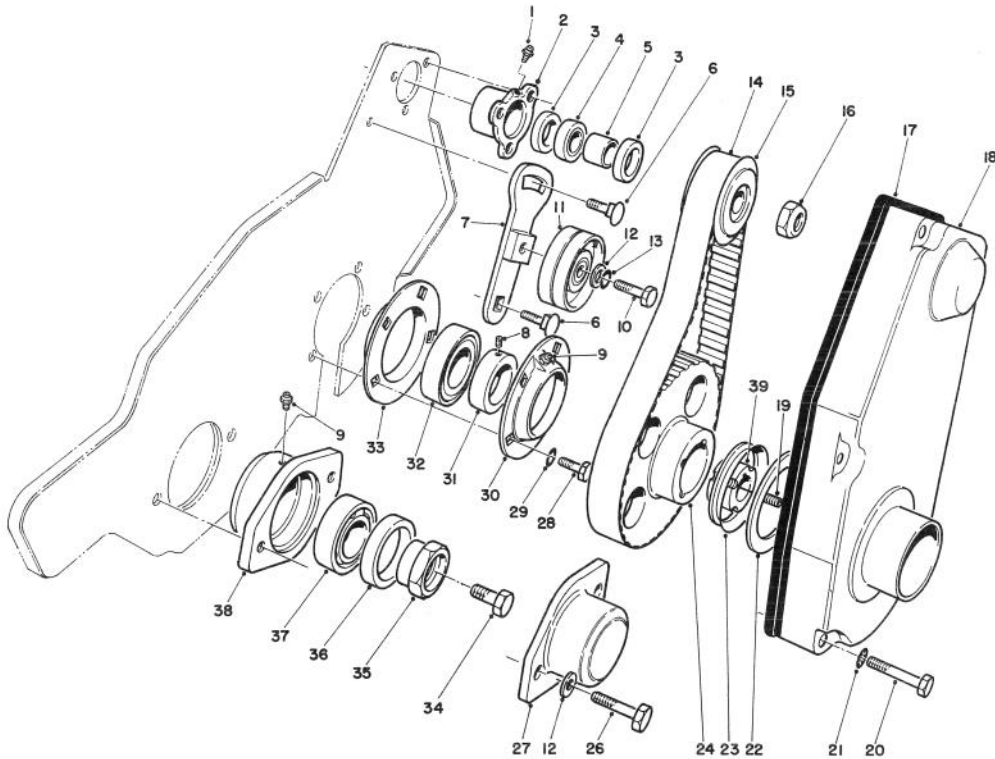
T-0947-90

## REEL ASSEMBLY

Ref. No.	Part No.	Description	No. Used
1	62-5070	Decal — Shield	1
2	65-6410	Shield — Grass (Incl. Ref. #18 & 19)	1
3	3296-42	Nut	4
4	3256-22	Washer — Flat	6
5	65-6270	Bolt — Bed Bar	2
6	32128-48	Nut — Flange	2
7	65-6260	Washer — Thrust	4
8	52-2890	Bushing — Flange	2
9	63-9510	Bushing — Rubber	2
10	63-8470	Bedknife — 1/8"	1
*	63-8560	Bedknife — Tournament	1
*	65-8250	Bedknife — Micro Cut	1

Ref. No.	Part No.	Description	No. Used
11	13-8519	Reel W.A.	1
12	65-6240	Bedbar	1
13	321-3	Screw — Cap, Hex Hd	4
14	65-6450	Bracket — Shield, L.H.	1
15	57-4910	Screw — Special	13
16	32144-73	Screw — Self Tapping	5
17	36-7260	Bar — Cutoff	1
18		Flap — Shield, Grass	1
19		Rivet	13
20	65-6460	Bracket — Shield, R.H.	1
*†	13-8199	Bar — Heights of Cut	1
†	Note:	Includes the following parts.	
†	32122-22	Screw	1
†	3219-14	Nut	1

\* Not Illustrated



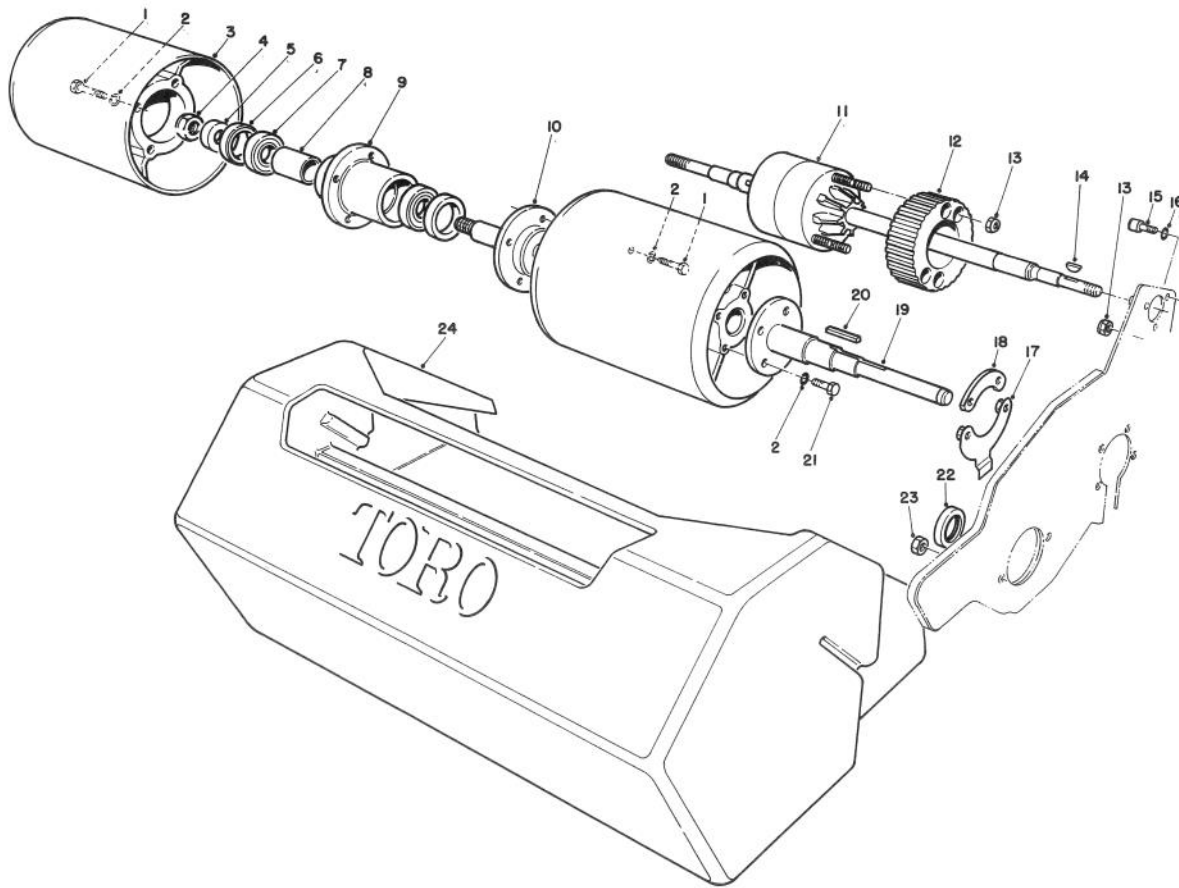
T-0945-90

## DRUM DRIVE ASSEMBLY

Ref. No.	Part No.	Description	No. Used
1	302-65	Fitting — Grease	2
2	65-6650	Housing — Bearing	2
3	253-160	Seal	4
4	251-338	Bearing	2
5	65-6870	Spacer — Pulley	2
6	3230-20	Bolt — Carriage	4
7	65-6740	Bracket — Idler W.A.	2
8		Screw — Set	2
9	302-5	Fitting — Grease	4
10	323-29	Screw — Cap, Hex Hd	2
11	65-6330	Pulley — Idler	2
12	3256-24	Washer — Flat	4
13	3253-21	Washer — Lock	2
14	65-6210	Belt	2
15	65-6660	Pulley	2
16	3296-57	Nut	2
17	65-7130	Strip — Edging	2
18	65-7100	Cover — L.H.	1
*	65-7060	Cover — R.H.	1
19	3245-43	Screw — Set	4

Ref. No.	Part No.	Description	No. Used
20	321-11	Screw — Cap, Hex Hd	8
21	3254-8	Washer — Lock, Int. Tooth	8
22	65-6570	Washer	2
23	253-161	Seal — V-Ring	2
24	65-8470	Pulley — Shaft, Drum	2
26	323-18	Screw — Cap, Hex Hd	2
27	65-6220	Housing — Bearing	1
28	322-3	Screw — Cap, Hex Hd	8
29	3253-4	Washer — Lock	8
30	65-6580	Flangette (Incl. Ref. #9)	2
31		Collar — Locking	2
32	251-337	Bearing (Incl. Ref. #8 & 31)	2
33	65-6590	Flangette	2
34	323-2	Screw — Cap, Hex Hd	1
35	65-8240	Nut — Bearing, Lock	1
36	253-163	Seal — Spring Loaded	2
37	251-342	Bearing	2
38	65-6090	Housing — Bearing	2
39	65-8460	Taper Lock	2

\* Not Illustrated

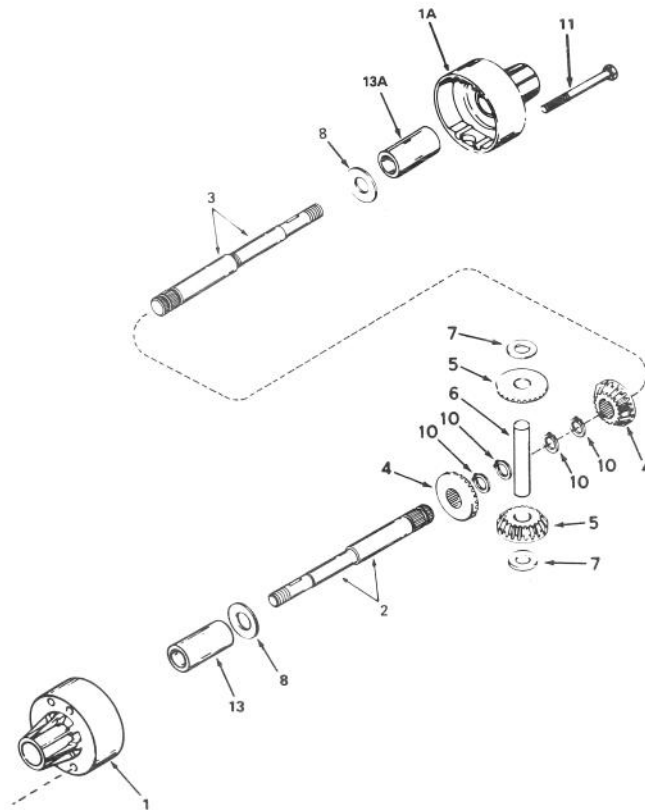


T-0944-90

## DRUM & BASKET ASSEMBLY

Ref. No.	Part No.	Description	No. Used
1	322-9	Screw — Cap, Hex Hd	8
2	3253-4	Washer — Lock	16
3	65-6500	Drum	2
4	3296-33	Nut	1
5	65-6530	Spacer — Seal Ride	1
6	253-159	Seal	2
7	251-257	Bearing	2
8	65-6520	Spacer — Bearing	1
9	65-6510	Hub — Drum	1
10	65-6470	Spindle — Drum	1
11	65-6630	Differential	1
12	65-6670	Pulley — Differential	1

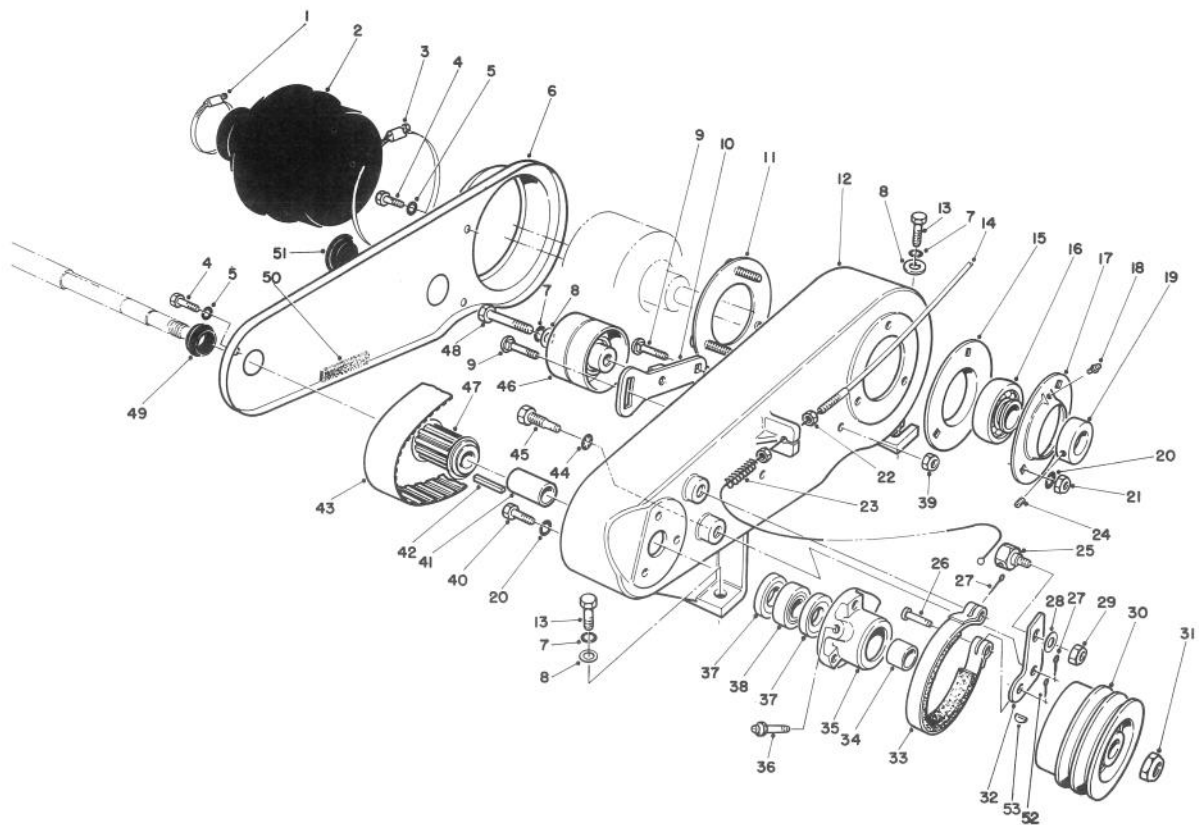
Ref. No.	Part No.	Description	No. Used
13	3296-29	Nut — Lock	8
14	3257-32	Key	2
15	3274-15	Capscrew — Soc Hd	6
16	3253-18	Washer — Lock	6
17	65-6550	Cover — Slot, W.A.	2
18	65-6560	Plate — Clamp	2
19	65-6540	Shaft — Drum	2
20	7-0036	Key	2
21	322-5	Screw — Cap, Hex Hd	8
22	253-96	Seal	1
23	32152-2	Nut — Lock	2
24	65-7230	Basket — Grass	1



## DIFFERENTIAL ASSEMBLY MODEL NO. 100-081

Ref. No.	Part No.	Description	No. Used
1	774484	Housing, Differential Carrier (Incl. Ref. #13)	1
1A	774485	Housing, Differential Carrier (Incl. Ref. #13A)	1
2	774864	Axle (20.91" Long)	1
3	774863	Axle (6.198" Long)	1
4	778221	Gear, Bevel	2
5	778068	Gear, Pinion	2

Ref. No.	Part No.	Description	No. Used
6	786040	Pin, Drive	1
7	780096	Washer, Thrust	2
8	780001	Washer	2
10	792125	Ring, Retaining (Pkg. of 2)	4
11	792093	Screw, Flanged Hex Hd, 5/16-18 x 4-3/16	4
13	780077	Bushing	1
13A	780124	Bushing	1

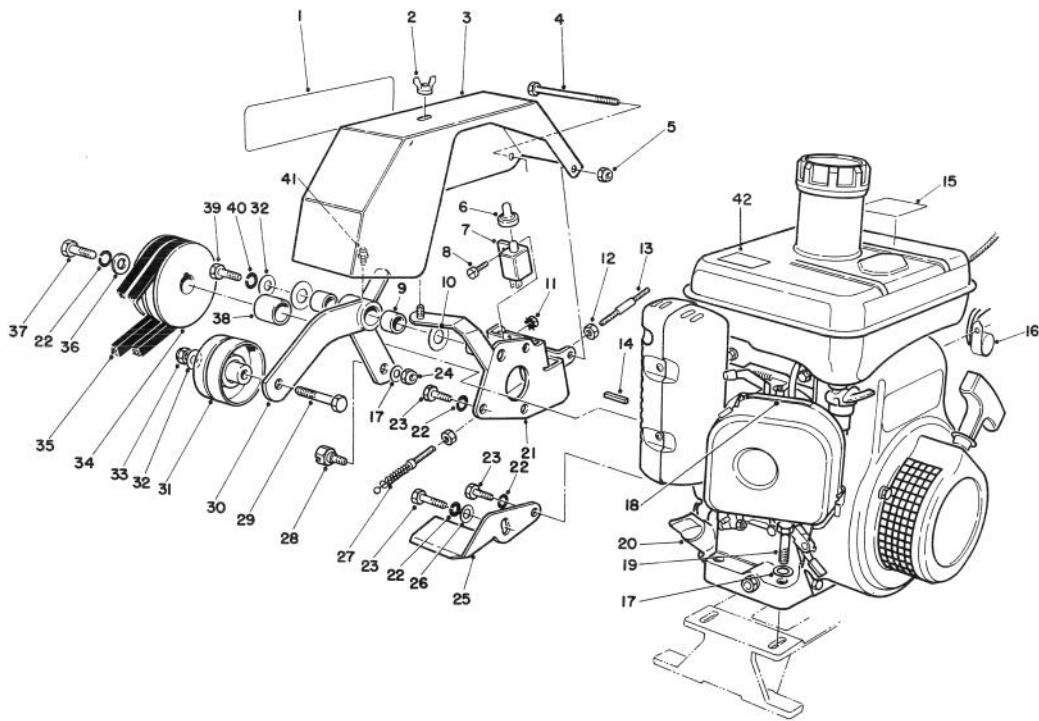


T-0940-90

## COUNTERSHAFT ASSEMBLY

Ref. No.	Part No.	Description	No. Used
1	2412-92	Clamp — Hose	1
2	65-6800	Boot — Differential	1
3	2412-46	Clamp — Hose	1
4	321-3	Screw — Cap, Hex Hd	3
5	3253-3	Washer — Lock	3
6	65-6890	Cover — Box	1
7	3253-21	Washer — Lock	5
8	3256-24	Washer — Flat	5
9	3230-2	Bolt — Carriage	2
10	65-6740	Bracket — Idler	1
11	65-6720	Plate — Screw W.A.	1
12	65-6690	Housing — Countershaft	1
13	323-5	Screw — Cap, Hex Hd	4
14	65-7780	Cable — Brake (Incl. Ref. #22)	1
15	65-6710	Flangette	1
16	251-343	Bearing (Incl. Ref. #19 & 24)	1
17	65-6700	Flangette (Incl. Ref. #18)	1
18	302-65	Fitting — Grease	1
19		Collar — Locking	1
20	3253-4	Washer — Lock	6
21	3218-2	Nut — Jam	3
22	3219-1	Nut — Hex	2
23	65-7790	Spring — Compression	1
24		Screw — Set	1
25	65-6820	Bolt — Cable, Mounting	1
26	283-75	Pin — Clevis	1

Ref. No.	Part No.	Description	No. Used
27	3272-6	Cotter Pin	2
28	3256-23	Washer — Flat	1
29	3296-47	Nut — Lock	1
30	65-6880	Pulley — Shaft, Input	1
31	3296-57	Nut — Lock	1
32	65-6830	Lever — Brake	1
33	65-6780	Band — Brake	1
34	65-6870	Spacer — Short	1
35	65-6760	Housing — Bearing	1
36	302-64	Fitting — Grease (Long)	1
37	253-160	Seal	2
38	251-338	Bearing — Self Aligning	1
39	3296-29	Nut — Lock	2
40	322-5	Screw — Cap, Hex Hd	3
41	65-6860	Spacer — Long	1
42	65-6850	Key	1
43	65-6170	Belt	1
44	3254-6	Washer — Lock, Int. Tooth	2
45	65-6810	Support — Brake	2
46	65-6790	Pulley — Idler	1
47	65-6540	Pulley — Countershaft	1
48	323-8	Screw — Cap, Hex Hd	1
49	253-162	Grommet	1
50	65-6900	Strip — Seal, Cover	1
51	237-160	Plug	1
52	3272-8	Pin — Cotter	1
53	3257-32	Key	1



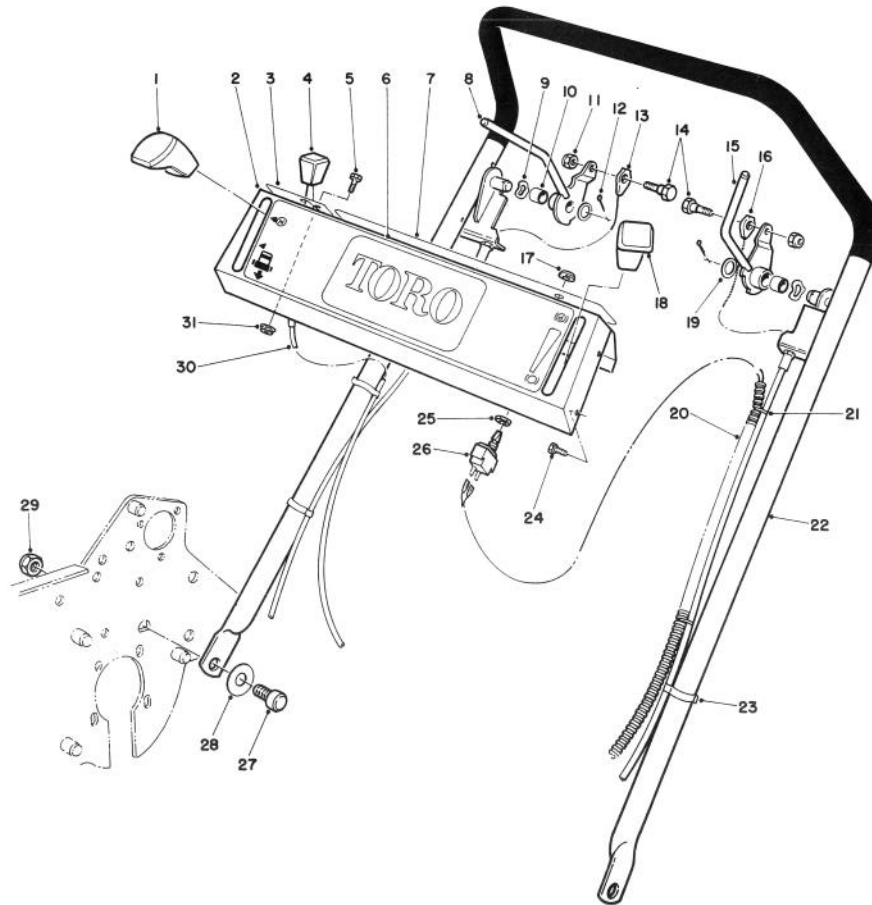
T-0938-90

## ENGINE & BELLCRANK ASSEMBLY

Ref. No.	Part No.	Description	No. Used
1	65-7690	Decal — Greenmaster 1000	1
2	65-7440	Nut — Wing	1
3	65-7430	Cover — Bellcrank	1
4	321-20	Screw — Cap, Hex Hd	1
5	3296-42	Nut — Lock	1
6	65-7400	Boot — Switch	1
7	65-7410	Switch	1
8	3252-4	Screw — Fillister Hd	2
9	256-309	Bushing	2
10	256-310	Washer — Special	2
11	32149-7	Nut — Lock, Ext. Tooth Washer	2
12	3219-1	Nut — Hex	2
13	65-7781	Cable — Clutch (Incl. Ref. #12)	1
14		Key	1
15	65-8190	Decal — Fuel	1
16	65-7420	Module — Interlock	1
17	3256-23	Washer — Flat	5
18	65-8380	Decal — Choke	1
19	322-9	Screw — Cap, Hex Hd	4
20	65-7240	Engine (Incl. Ref. #14)	1

Ref. No.	Part No.	Description	No. Used
21	65-7280	Support — Bellcrank W.A.	1
22	3253-4	Washer — Lock	5
23	48-7700	Screw — Cap, Hex Hd	5
24	3296-47	Nut — Lock	1
25	65-7340	Support — Belt	1
26	3256-23	Washer	1
27	65-7790	Spring — Compression	1
28	65-6820	Bolt — Clutch, Mounting	1
29	323-10	Screw — Cap, Hex Hd	1
30	65-7350	Bellcrank W.A. (Incl. Ref. #9 & 41)	1
31	65-6790	Pulley — Idler	1
32	3256-24	Washer — Plain	2
33	3296-39	Nut — Lock	1
34	65-7260	Pulley — Input, Power	1
35	65-7270	Belt-V, Matched Set	1
36	65-8270	Washer — Flat	1
37	48-9460	Screw	1
38	65-8260	Spacer — Shaft, Engine	1
39	323-4	Screw — Cap, Hex Hd	1
40	3253-21	Washer — Lock	1
41	302-5	Fitting — Grease	1
42	63-8440	Decal — Hot	1





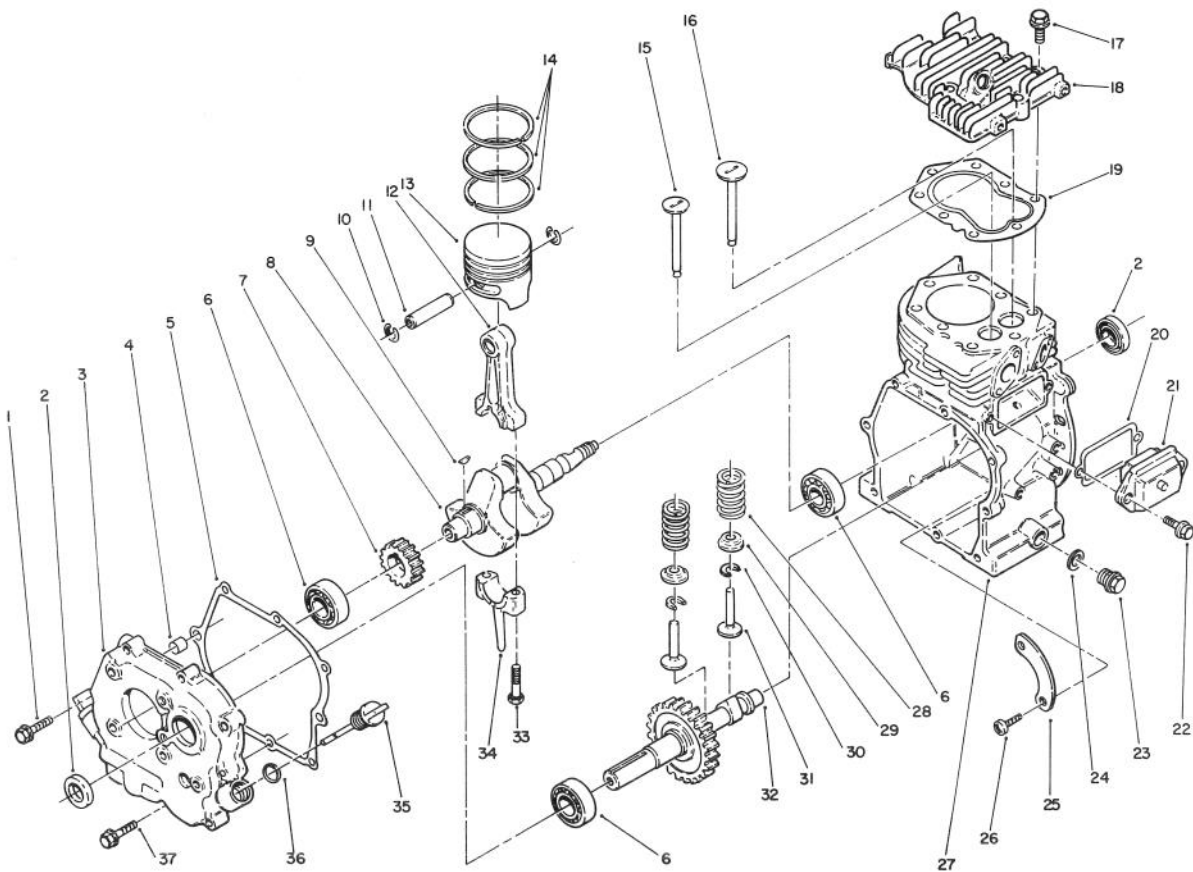
C-0941-90

## HANDLE ASSEMBLY

Ref. No.	Part No.	Description	No. Used
1	62-1290	Knob — Black	1
2	65-7750	Panel — Control	1
3	65-8170	Decal — Throttle	1
4	66-0120	Knob — Control	1
5	3290-134	Screw — Machine, Hex Hd	2
6	65-7670	Decal — Panel, Control	1
7	65-7680	Decal — Panel, Ignition	1
8	65-7620	Lever — Clutch	1
9	65-7740	Washer — Wave	2
10	256-206	Bushing	2
11	3296-42	Nut	2
12	3272-6	Pin — Cotter	2
13	65-7781	Cable — Clutch	1
14	11-9030	Screw — Shoulder	2
15	65-7720	Lever — Brake	1
16	65-7780	Cable — Brake	1
17	218-497	Facenut	1
18	62-1291	Knob — Red	1

Ref. No.	Part No.	Description	No. Used
19	3256-26	Washer — Flat	2
20	65-7760	Harness — Wire	1
21	3290-381	Tie — Wire	3
22	65-7520	Handle W.A.	1
23	218-466	Clip — Cable	3
24	32104-60	Screw — Ind. Hex Hd	4
25	218-498	Nut — Lock	1
26	28-4110	Switch — Light (Incl. Ref. #17 & 25)	1
27	65-7450	Stud — Pivot	2
28	68-7460	Washer	2
29	3296-28	Nut — Lock	2
30	65-7800	Control — Throttle	1
31	32128-17	Nut — Lock, Flange	2
*	65-7610	Lever — Clutch Assy (Incl. Ref. #8 & 10)	1
*	65-7710	Lever — Brake Assy (Incl. Ref. #10 & 15)	1

\* Not Illustrated



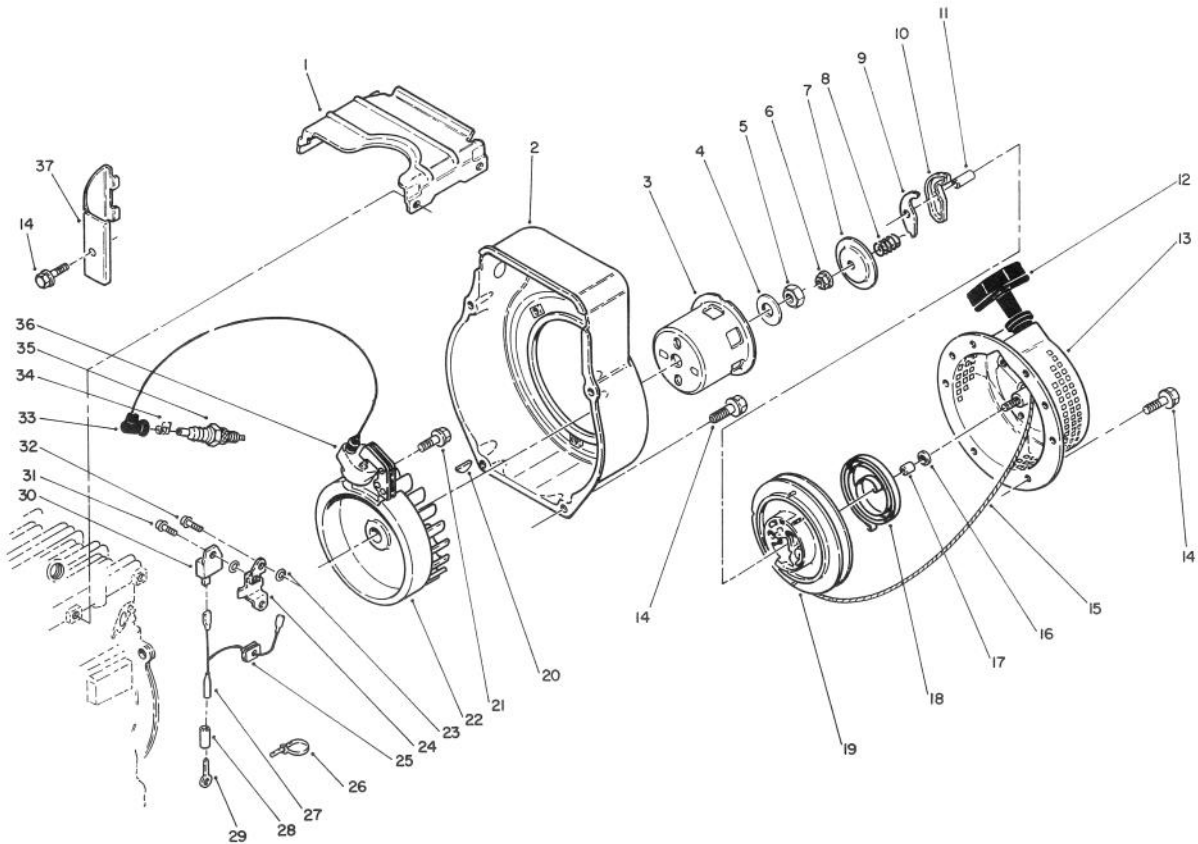
T-0950-90

## ENGINE ASSEMBLY (Kawasaki Model FG150G-DSCO)

Ref. No.	Part No.	Description	No. Used
1	130G0640	Bolt — Flanged	8
2	313650-4231-00	Seal — Oil	2
3	49015-6030	Cover — Crankcases	1
4	313640-418A	Pin	2
5	314601-4124A	Gasket	1
6	601A6204	Bearing — Ball	3
7	59056-2728	Gear — Helical	1
8	49119-6101	Crankshaft Assembly (Incl. Ref. #9, 12, 33 & 34)	1
9	92038-2077	Key	1
10	313650-3122-00	Snap Ring	2
11	13002-2071	Pin — Piston	1
12		Connecting Rod	1
13	314601-3111A	Piston — Std.	1
*	13029-2069	Piston — L.O. 25	1
*	13029-2070	Piston — L.O. 50	1
14	314601-3010A	Ring Set — Std.	1
*	13025-2065	Ring Set — L.O. 25	1
*	13025-2066	Ring Set — L.O. 50	1
15	313650-2112C	Valve — Exhaust	1
16	313650-2111B	Valve — Intake	1
17	130G0835	Bolt — Flanged	8

Ref. No.	Part No.	Description	No. Used
18	314601-1111A	Cylinder Head	1
19	314601-1121A	Gasket — Head	1
20	313650-1232-00	Gasket	1
21	314601-1231A	Cover — Valve Chamber	1
22	130B0612	Bolt — Flanged	2
23	130D1014	Plug — Drain	2
24	11009-2432	Gasket — Drain Plug	2
25	314601-4175A	Plate	1
26	92009-2104	Screw	2
27	49120-2172	Crankcase — Complete	1
28	315470-2113A	Spring — Valve	2
29	313650-2116-00	Retainer — Valve Spring	2
30	313650-2115-00	Collet	2
31	12032-2062	Tappet	2
32	49118-6045	Camshaft — Complete	1
33	315601-3245A	Bolt	2
34		End Cap — Connecting Rod	1
35	16115-2051	Cap — Oil Filler	2
36	92055-2064	O-Ring	2
37	130G0630	Bolt — Flanged	6

\* Not Illustrated

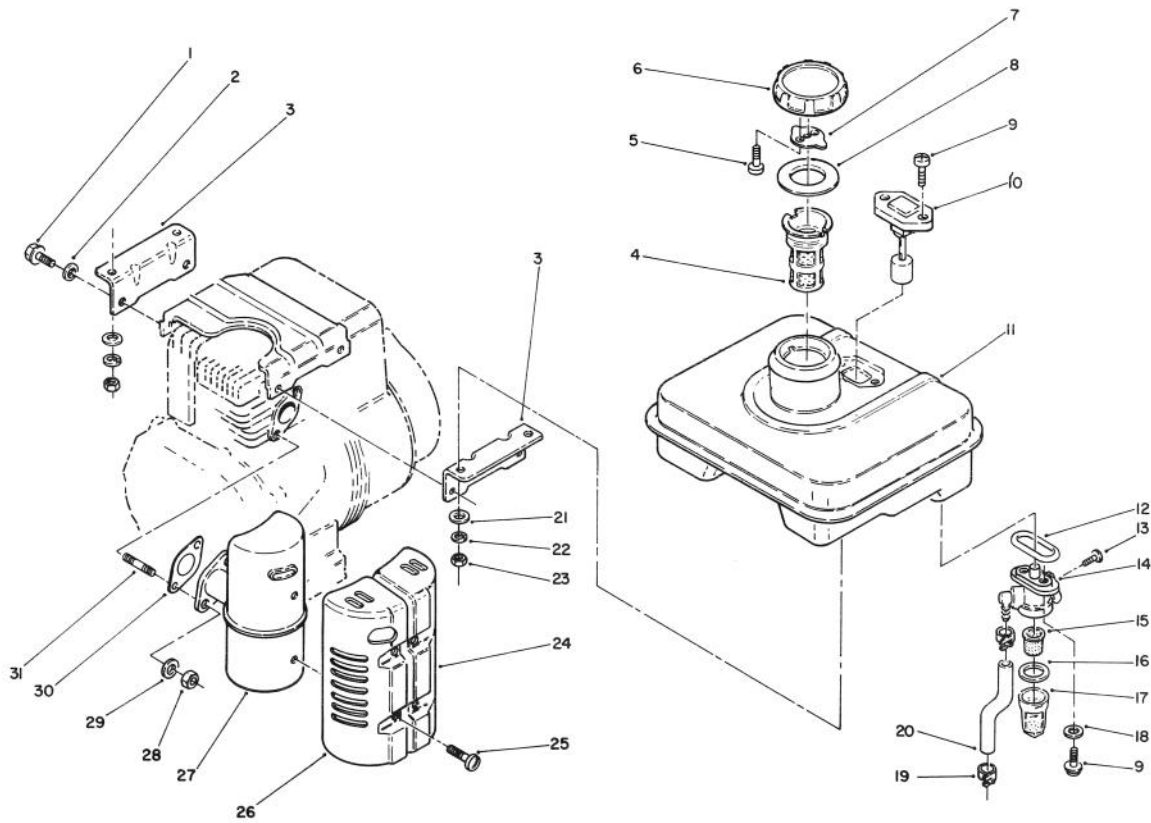


T-0951-90

## ENGINE ASSEMBLY (Continued) (Kawasaki Model FG150G-DSCO)

Ref. No.	Part No.	Description	No. Used
1	314601-1631A	Schroud — Engine	1
2	59066-2498-9H	Housing — Fan	1
3	49080-2131	Pulley — Starter	1
4	314401-3482A	Washer	1
5	92015-2157	Locknut	1
6	315601-3443A	Locknut	1
7	315601-3449A	Retainer	1
8	315611-3446A	Spring	1
9	315601-3445A	Pawl	1
10	315611-3463A	Pawl	1
11	314601-3473A	Pin	1
12	46075-2057	Grip, Recoil Starter	1
13	314612-3437A	Case	1
14	130B0608	Bolt — Flanged	11
15	314221-3453-00	Rope	1
16	315601-3442A	Washer	1
17	315601-3458A	Washer	1
18	315601-3452A	Spring — Recoil	1
19	59101-2069	Reel — Recoil Starter	1

Ref. No.	Part No.	Description	No. Used
20	92038-2077	Key	1
21	131B0520	Bolt — Flanged	2
22	21194-2155	Flywheel — Comp	1
23	315801-6625A	Washer	3
24	314601-8137A	Bracket	1
25	314601-8164A	Grommet	1
26	316691-8577A	Band	1
27	26011-2079	Wire — Lead	1
28	313642-8167-00	Shrink Tube	1
29	92037-2063	Clamp	1
30	21119-2101	Igniter	1
31	242B0410	Screw — Pan Hd	2
32	315601-6732A	Screw — Pan Hd	2
33	317270-8418B	Cap. Spark Plug	1
34	317270-8419A	Terminal	1
35	92070-2052	Spark Plug — 8P411S	1
36	314601-8103A	Coil Assembly — Ignition	1
37	314601-1632A	Shroud — Engine	1

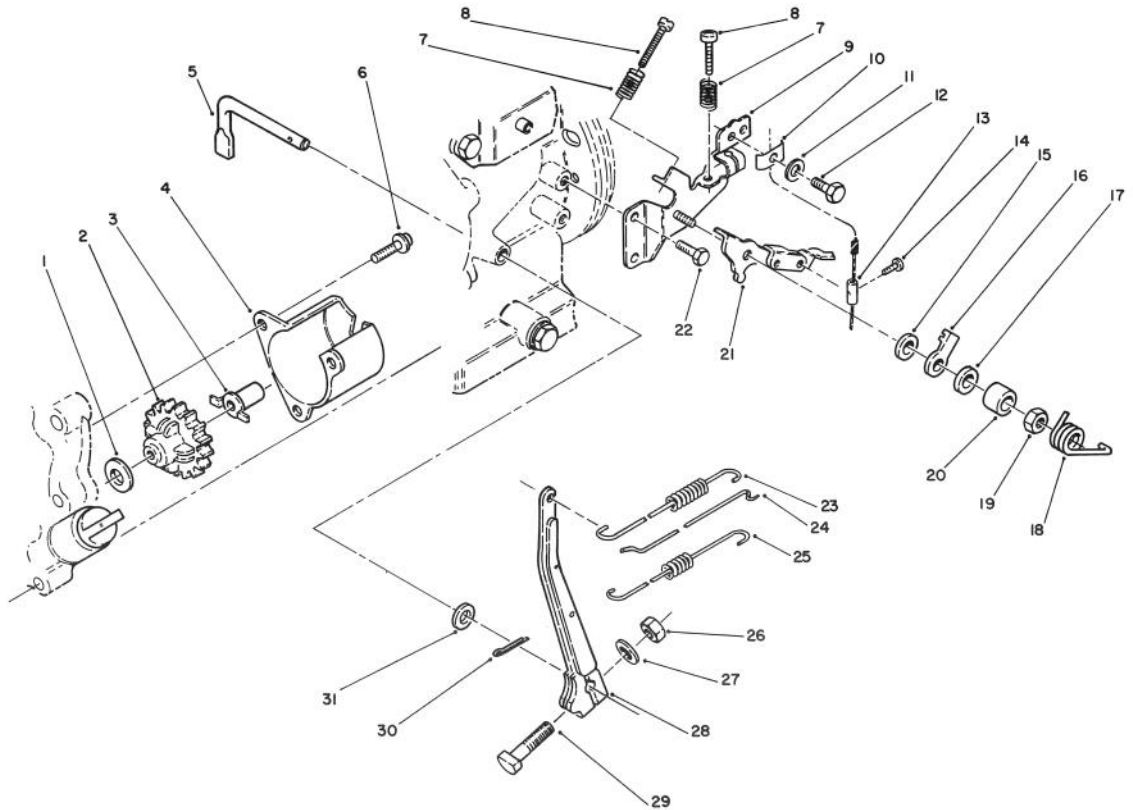


T-0952-90

## ENGINE ASSEMBLY (Continued) (Kawasaki Model FG150G-DSCO)

Ref. No.	Part No.	Description	No. Used
1	180B0616	Bolt — Upset WS	4
2	411B0600	Washer — Flat	8
3	11045-2023-911	Bracket — Tank	2
4	315801-6661F	Filter — Fuel	1
5	314401-6732A	Screw	4
6	51048-2055	Cap Assembly Fuel Tank (Incl. Ref. #4, 5, 7 & 8)	1
7	315801-6644A	Spring	1
8	315801-6643B	Gasket	1
9	315801-6577A	Screw	2
10	52005-2072	Gauge — Fuel	1
11	51001-2221-9H	Fuel Tank — Complete	1
12	315801-6512A	O-Ring	1
13	92009-1123	Screw	2
14	51023-2096	Tap Assembly (Incl. Ref. #14 thru 18)	1
15	315801-6519A	Filter — Fuel	1

Ref. No.	Part No.	Description	No. Used
16	315801-6518A	Gasket	1
17	51036-2062	Cup — Fuel Tap	1
18	49091-2053	Washer — Seal	2
19	313679-6812-00	Clamp	2
20	315602-6811A	Tube	1
21	411B0600	Washer — Flat	8
22	461F0600	Lock Washer	4
23	311B0600	Nut — Hex	4
24	49106-2052-9Y	Cover — Muffler	1
25	92009-2104	Screw	4
26	49106-205194-9Y	Cover — Muffler	1
27	49069-20539Y	Muffler Assembly (Incl. Ref. #24, 25 & 26)	1
28	311R0600	Nut — Hex	2
29	461F0600	Lock Washer	2
30	11009-2124	Gasket — Muffler	1
31	171G0616	Stud	2

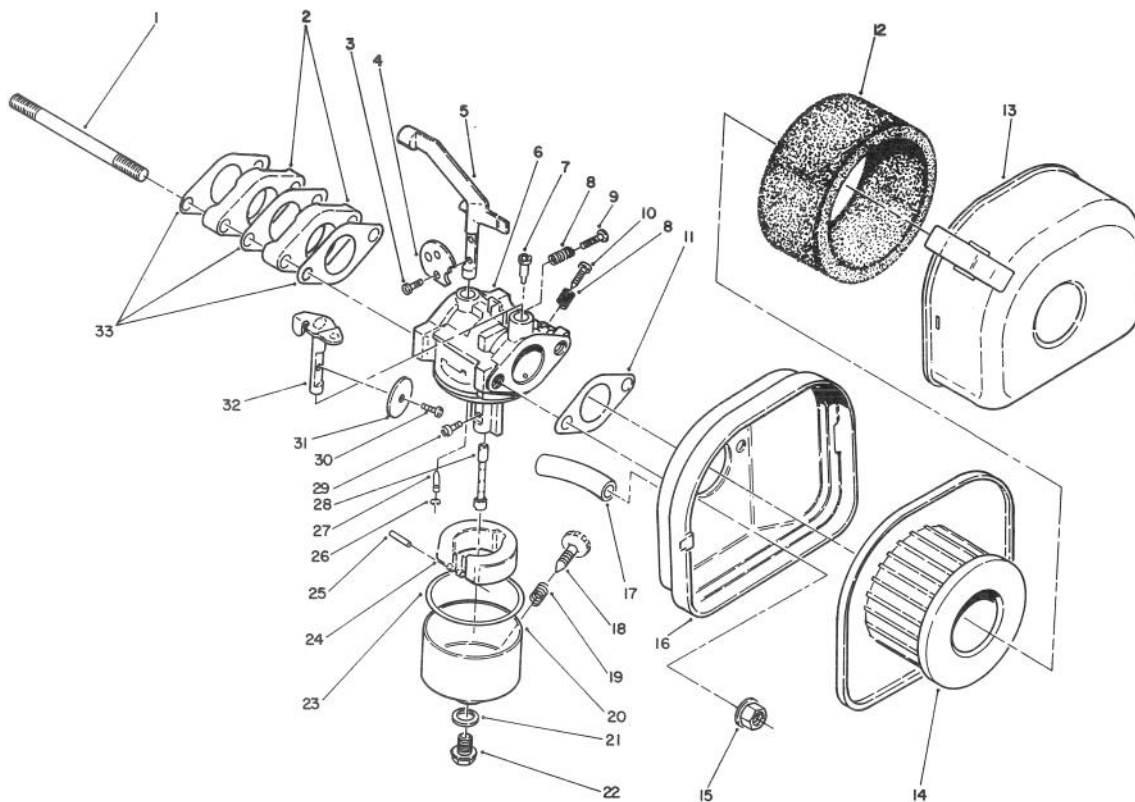


T-0954-90

## ENGINE ASSEMBLY (Continued) (Kawasaki Model FG150G-DSCO)

Ref. No.	Part No.	Description	No. Used
1	314401-5135A	Washer	1
2	315801-5110A	Governor Assembly	1
3	314401-5121B	Sleeve	1
4	315601-5147E	Cover	1
5	315501-5122C	Arm — Pivot	1
6	314405-3092A	Screw	3
7	92144-2004	Spring	2
8	214B0518	Screw — Pan Hd	2
9	315615-5335A	Bracket	1
10	92037-2020	Clamp	1
11	411B0500	Washer — Flat	1
12	315501-5381A	Bolt	1
13	92015-2120	Nut	1
14	214B0408	Screw — Pan Hd	1
15	314401-5383A	Washer	1
16	13169-2113	Plate	1

Ref. No.	Part No.	Description	No. Used
17	314401-5388A	Spring — Washer	1
18	315601-5317A	Spring	1
19	314401-5385A	Nut	1
20	92026-2158	Spacer	1
21	315601-5311D	Lever	1
22	130B0612	Bolt — Flanged	2
23	314601-5314A	Spring	1
24	49046-2091	Rod — Governor	1
25	314601-5314A	Spring	1
26	311B0600	Nut Hex	1
27	411B0600	Washer — Flat	1
28	314601-5211A	Arm — Governor	1
29	92002-2269	Bolt	1
30	554A0600	Pin — Snap	1
31	410B0600	Washer — Flat	1



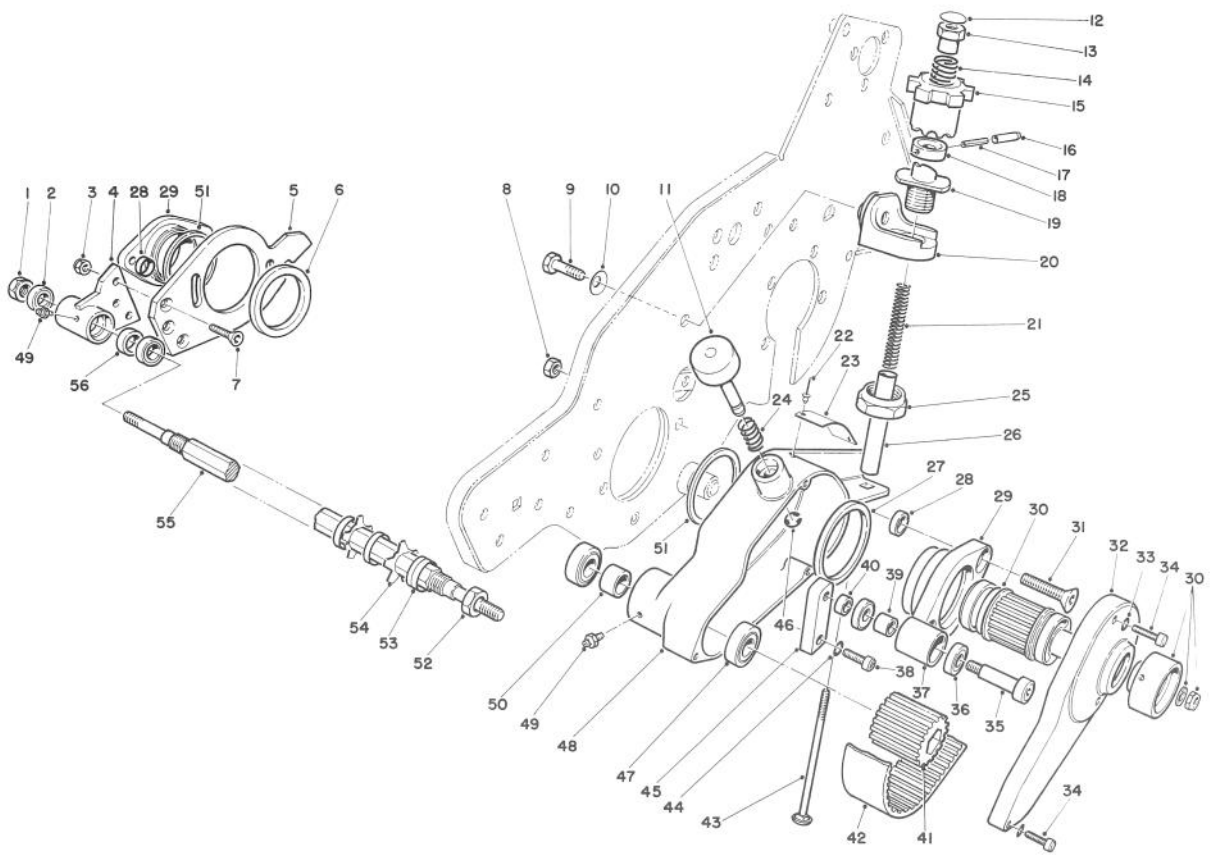
T-0953-90

## ENGINE ASSEMBLY (Continued) (Kawasaki Model FG150G-DSCO)

Ref. No.	Part No.	Description	No. Used
1	172G0685	Stud	2
2	315601-6181A	Insulator	2
3	314572-6137A	Screw	2
4	16126-2058	Valve — Choke	1
5	315622-6142A	Shaft — Carburator	1
6		Carburator Body	1
7	312759-6112-00	Jet — Pilot, #35	1
8	312750-6116-00	Spring	2
9	214B0412	Screw — Pan Hd	1
10	313650-6114-00	Screw — Pilot	1
11	11009-2127	Gasket — Air Filter	1
12	315510-1313A	Element — Air Filter	1
13	11012-2248-9H	Cap — Air Filter	1
14	3144AA-B12A	Element — Air Filter	1
15	92015-1193	Nut	2
16	11011-2187	Case — Air Filter	1
17	702A071000	Tube — Rubber	1
18	315822-6133A	Screw	1
19	313122-6116-00	Spring	1

Ref. No.	Part No.	Description	No. Used
20	315635-6130A	Chamber — Float (Incl. Ref. #18 & 19)	1
21	314499-6159A	Gasket	1
22	92150-2098	Bolt	1
23	314598-6128A	Gasket	1
24	16031-2062	Float	1
25	314499-6127A	Pin	1
26	315721-6134A	Snap Ring	1
27	314595-6122A	Valve — Float	1
28	49121-2102	Nozzle — Main, #88	1
29	314310-6137A	Screw	1
30	92063-2138	Jet — Main #72.5	1
31	312750-6101A	Valve — Throttle, #130	1
32	314621-6139A	Shaft — Carburator	1
33	315601-6184A	Gasket	3
*	15001-2702	Carburator Assembly (Complete)	1
*	11010-2354-9H	Air Filter Assembly (Complete)	1

\* Not Illustrated



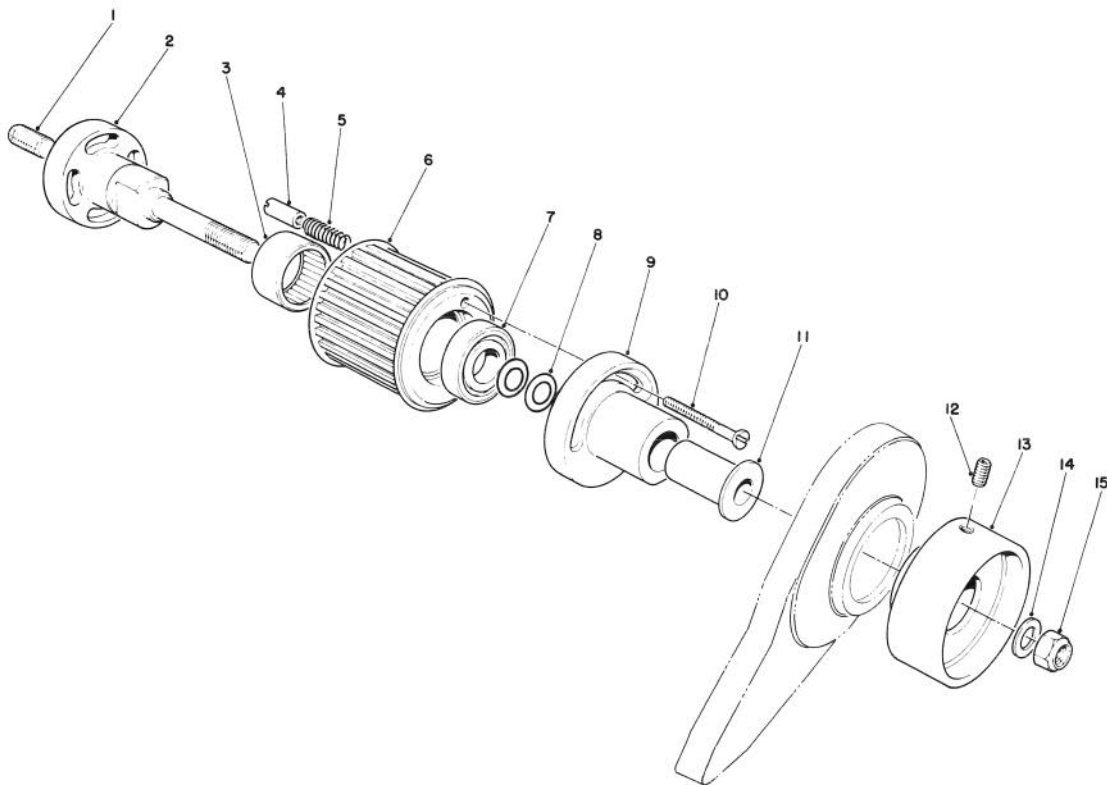
T-Q942-90

## GROOMING REEL KIT MODEL 04125 (Optional)

Ref. No.	Part No.	Description	No. Used
1	3296-62	Nut	1
2	251-327	Bearing — Ball	2
3	3296-4	Nut — Lock	3
4	65-9220	Housing — Bearing	1
5	65-8060	Plate — Side	1
6	65-9860	Bearing	1
7	3289-21	Screw — Hex Socket, Flat Hd	3
8	32152-2	Nut — Lock	4
9	323-34	Screw — Cap, Hex Hd	2
10	3290-455	Washer — Belleville	2
11	65-9930	Cap	1
12	284-3	Plug	2
13	65-9570	Driver	2
14	65-9580	Spring	2
15	65-9560	Knob — Adjustment (Incl. Ref. #12-14)	2
16	2410-68	Cover — Pin	2
17	32121-15	Pin — Roll	2
18	65-9550	Cap	2
19	65-9830	Ramp	2
20	65-8090	Block — Mounting	2
21	65-9810	Spring	2
22	3290-271	Rivet — Pop	2
23	65-9950	Plate — Caution	1
24	65-9940	Spring	1
25	3296-49	Nut — Lock	2
26	65-8110	Spacer — Spring	2
27	65-9860	Bearing	1
28	65-9820	Spacer	4
29	65-8160	Adapter	2

Ref. No.	Part No.	Description	No. Used
30		Clutch Assembly	1
31	3289-23	Screw — Socket, Flat Hd	2
32	65-9710	Cover — Belt	1
33	3253-12	Washer — Lock	3
34	3274-13	Screw — Cap, Soc Hd	3
35	65-9340	Screw — Shoulder	1
36	251-328	Bearing	2
37	65-9320	Pulley — Idler	1
38	3274-10	Screw — Cap, Soc Hd	1
39	65-9980	Spacer — Pulley, Idler	1
40	65-9330	Spacer	1
41	65-9290	Pulley — Driven	1
42	65-9700	Belt	1
43	65-8120	Bolt — Carriage	2
44	3253-4	Washer — Lock	1
45	65-9310	Block — Idler	1
46	32120-18	Ring — Retaining	1
47	251-327	Bearing	2
48	65-8070	Housing — Belt Drive	1
49	302-5	Fitting — Grease	2
50	65-9300	Spacer — Pulley, Driven	1
51	65-8010	Ring — Adapter	2
52	3296-60	Nut — Lock	2
53	70-1350	Spacer (41 Blade Reel)	84
54	70-1170	Blade (41 Blade Reel)	41
55	75-9980	Shaft	1
56	65-9300	Spacer	1
*	74-3290	Groomer Reel Assy (41 Blade Reel) (Incl. Ref. #52-55)	1

\* Not Illustrated



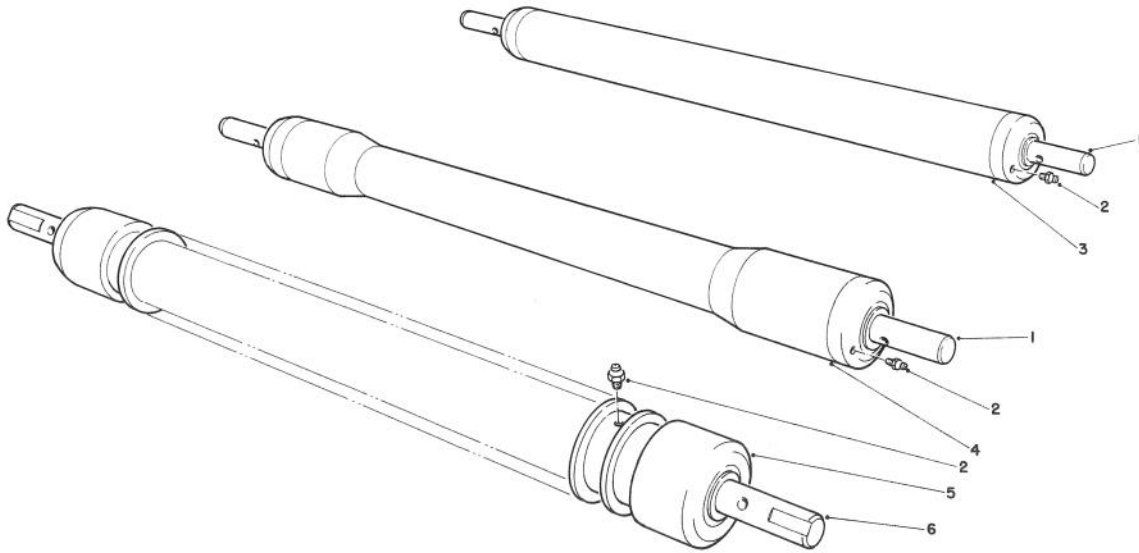
T-0946-90

## CLUTCH ASSEMBLY Grooming Reel Kit Model 04125 (Optional) (Continued)

Ref. No.	Part No.	Description	No. Used
1	3247-7	Screw — Set, Soc Hd	1
2	65-8130	Adapter	1
3	252-110	Bearing — Needle	1
4	65-9660	Pin — Clutch	1
5	65-9670	Spring — Compression	1
6	65-9630	Pulley — Driver	1
7	251-327	Bearing — Roller	1
8	3290-480	Washer — Belleville	2

Ref. No.	Part No.	Description	No. Used
9	65-9640	Disc — Release, Clutch	1
10	65-9650	Screw — Special	1
11	256-300	Bushing — Flange	1
12	32110-13	Screw — Set	2
13	65-9680	Knob — Clutch	1
14	3256-24	Washer — Flat	1
15	3296-39	Nut — Lock	1





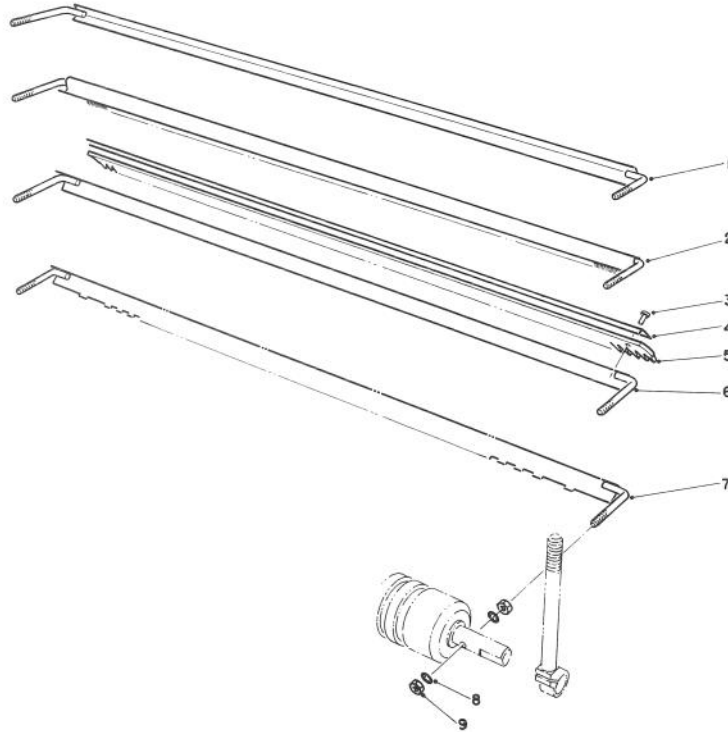
T-0956-90

## CUTTING UNIT ROLLER OPTIONS

Ref. No.	Part No.	Description	No. Used
1	52-3180	Bearing — Roller	2
2	302-5	Fitting — Grease	2
3	52-3170	Roller Assembly (Incl. Ref. #1 & 2)	1
4	52-3590	Swaged Roller Assembly (Incl. Ref. #1 & 2)	1

Ref. No.	Part No.	Description	No. Used
5	71-1550	Wiehle Roller Assembly (Incl. Ref. #2 & 6)	1
6	52-3210	Bearing — Roller, Wiehle	2
*	04118	Wiehle Roller Carton of 1	1
*	13-8199	Bar — Gauge Hoc	1
*	32122-22	Capscrew	2
*	3219-14	Locknut	2

\* Not Illustrated

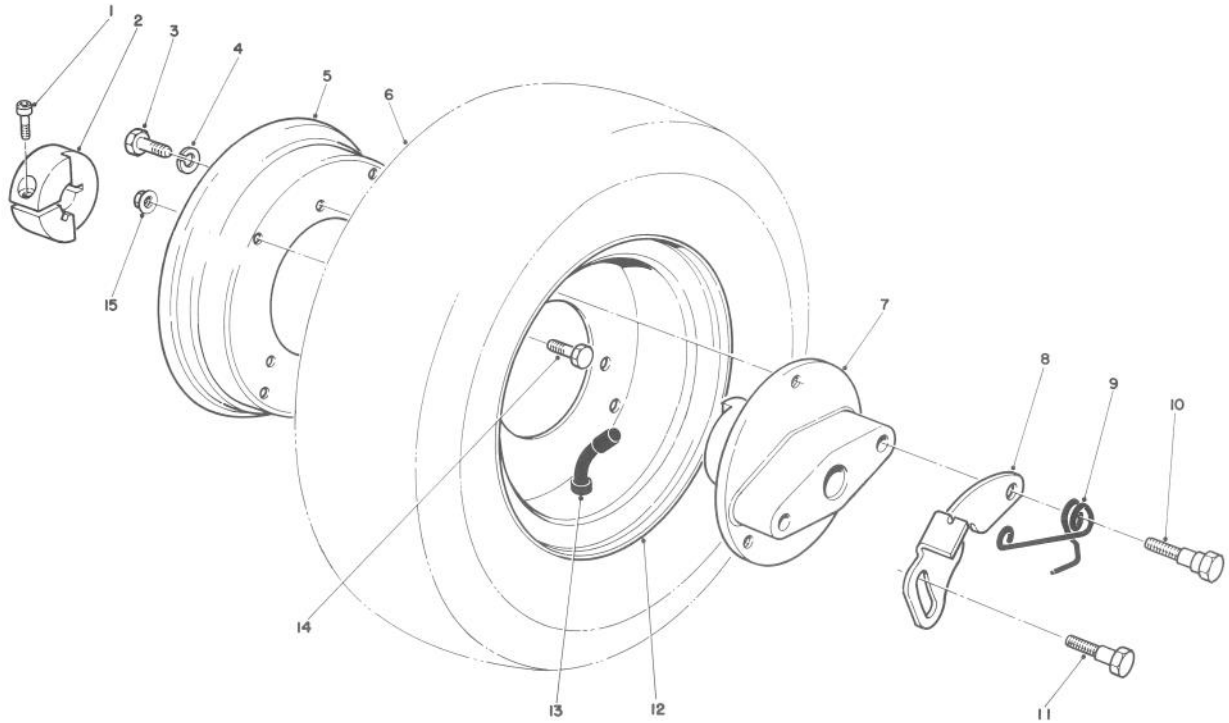


T-0955-90

## SCRAPER OPTIONS

Ref. No.	Part No.	Description	No. Used
1	65-8360	Scraper — Smooth	1
2	33-1000	Scraper — Brush	1
3	3295-15	Rivet	11
4	8-2520	Support — Comb	1
5	8-2530	Comb — Urethane	1

Ref. No.	Part No.	Description	No. Used
6	11-0070	Scraper Comb Assembly (Incl. Ref. #3-5)	1
7	65-8340	Scraper — Wiehle Roller	1
8	3254-8	Washer — Lock, Int. Tooth	4
9	3219-1	Nut — Hex	4



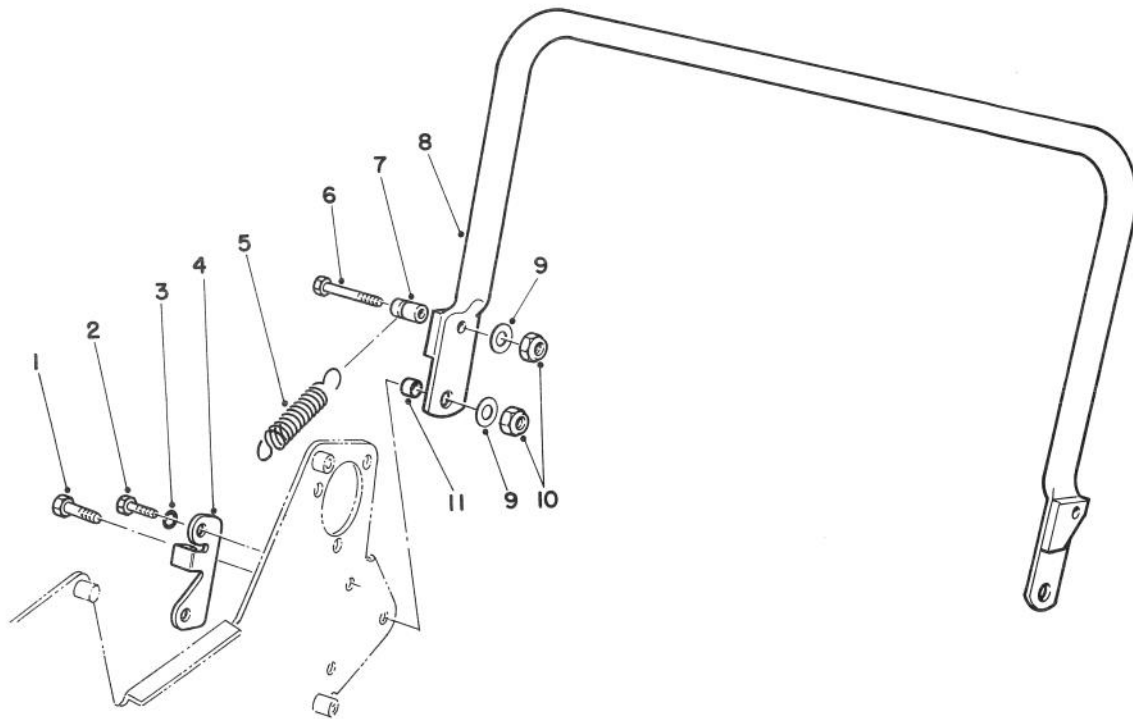
T-0939-90

## TRANSPORT WHEEL Wheel & Kickstand Kit Model No. 04120 (Optional)

Ref. No.	Part No.	Description	No. Used
1	3274-84	Screw — Hex Soc Hd	2
2	65-7920	Collar — Lock	2
3	48-7700	Screw — Cap, Hex Hd	6
4	68-9420	Washer — Lock	6
5	65-7970	Rim — Shallow	2
6	65-7940	Tire	2
7	65-7990	Hub — Wheel	2
8	65-8020	Lever — Retaining	2

Ref. No.	Part No.	Description	No. Used
9	65-8050	Spring	2
10	65-8030	Bolt — Mounting, Long	2
11	65-8040	Bolt — Mounting, Short	2
12	65-7960	Rim — Deep	2
13	65-7950	Tube & Valve Stem	2
14	48-7610	Screw — Cap, Hex Hd	8
15	65-7980	Nut — Flange	8
*	65-7930	Wheel Assy (Inc. Ref. #1-15)	2

\* Not Illustrated



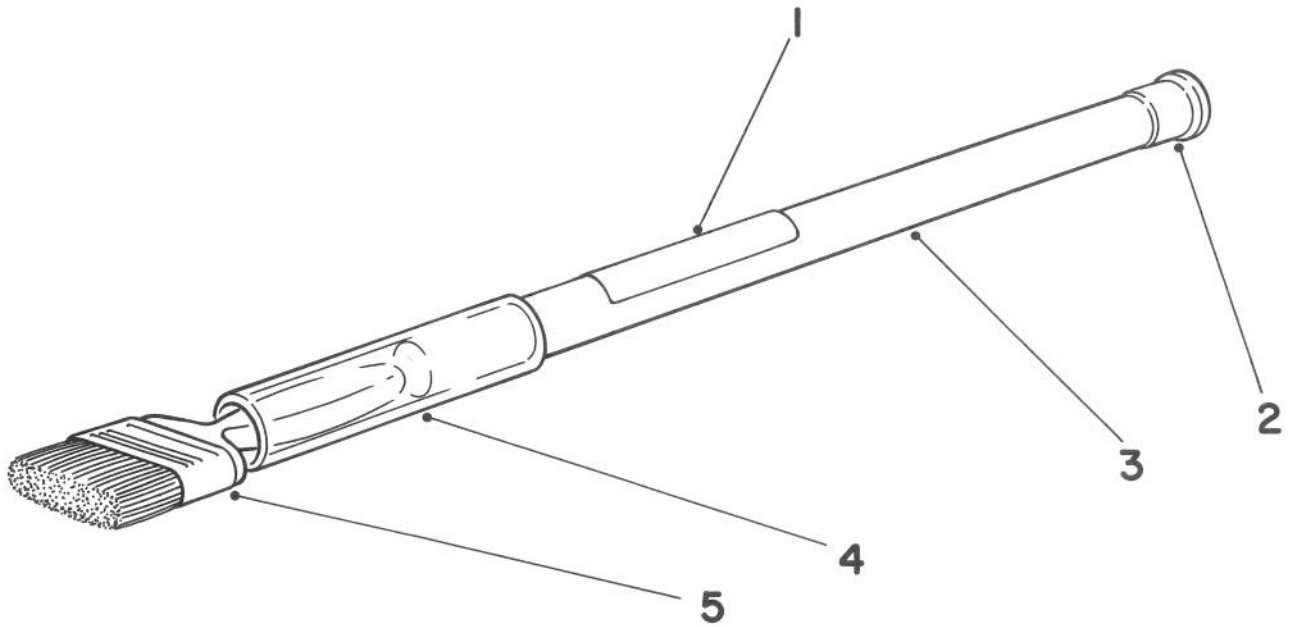
T-0948-90

## KICKSTAND WHEEL & KICKSTAND KIT MODEL NO. 04120 (Optional) (Continued)

Ref. No.	Part No.	Description	No. Used
1	322-4	Screw — Cap, Hex Hd	2
2	323-5	Screw — Cap, Hex Hd	2
3	3253-21	Washer — Lock	2
4	65-7890	Bracket — Spring	1
5	65-7880	Spring — Extension	1
6	322-10	Screw — Cap, Hex Hd	1

Ref. No.	Part No.	Description	No. Used
7	65-7900	Retainer — Spring	1
8	65-7850	Kickstand W.A.	1
9	3256-2	Washer — Flat	3
10	3296-29	Nut — Lock	3
11	65-7910	Spacer	2

\* Not Illustrated



**SPECIAL TOOL  
BACKLAPPING BRUSH ASSEMBLY NO. 29-9100**

T-0731-90

Ref. No.	Part No.	Description	No. Used
1	12-9140	Decal	1
2	2410-18	Plug	1
3	29-9080	Handle	1

Ref. No.	Part No.	Description	No. Used
4	29-9090	Hose — Handle	1
5	36-4310	Brush	1

# The Toro Promise

## A ONE YEAR LIMITED WARRANTY

*The Toro Company promises to repair your TORO Product if defective in materials or workmanship. The following time periods from the date of purchase apply:*

### **Commercial Products ..... 1 Year**

*The costs of parts and labor are included, but the customer pays the transportation costs on walk rotary mowers with cutting unit width of less than 25".*

If you feel your TORO product is defective and wish to rely on The Toro Promise, the following procedure is recommended:

1. Contact your Authorized TORO Distributor or Commercial Dealer (the Yellow Pages of your telephone directory is a good reference source).
2. The Toro Distributor or Commercial Dealer will advise on the arrangements that can be made to inspect and repair your product.
3. The TORO Distributor or Commercial Dealer will inspect the product and advise you whether the product is defective and, if so, make all repairs necessary to correct the defect without an extra charge to you.

If for any reason you are dissatisfied with the distributor's analysis of the defect or the service performed, you may contact us.

Write:

TORO Commercial Products Service Department  
8111 Lyndale Avenue South  
Minneapolis, Minnesota 55420

The above remedy of product defects through repair by an Authorized TORO Distributor or Commercial Dealer is the purchaser's sole remedy for any defect.

THERE IS NO OTHER EXPRESS WARRANTY. ALL IMPLIED WARRANTIES OF MERCHANTABILITY AND FITNESS FOR USE ARE LIMITED TO THE DURATION OF THE EXPRESS WARRANTY.

Some states do not allow limitations on how long an implied warranty lasts, so the above limitation may not apply to you.

This Warranty applies only to parts or components which are defective and does not cover repairs necessary due to normal wear, misuse, accidents, or lack of proper maintenance. Regular, routine maintenance of the unit to keep it in proper condition is the responsibility of the owner.

All warranty repairs reimbursable under the Toro Promise must be performed by an Authorized TORO Commercial Dealer or Distributor using Toro approved replacement parts.

Repairs or attempted repairs by anyone other than an Authorized TORO Distributor or Commercial Dealer are not reimbursable under the Toro Promise. In addition, these unauthorized repair attempts may result in additional malfunctions, the correction of which is not covered by warranty.

THE TORO COMPANY IS NOT LIABLE FOR INDIRECT, INCIDENTAL OR CONSEQUENTIAL DAMAGES IN CONNECTION WITH THE USE OF THE PRODUCT INCLUDING ANY COST OR EXPENSE OF PROVIDING SUBSTITUTE EQUIPMENT OR SERVICE DURING PERIODS OF MALFUNCTION OR NON-USE.

Some states do not allow the exclusion or limitation of incidental or consequential damages, so the above limitation or exclusion may not apply to you.

This warranty gives you specific legal rights, and you may also have other rights which vary from state to state.

### **COUNTRIES OTHER THAN THE UNITED STATES OR CANADA**

Customers who have purchased TORO products exported from the United States or Canada should contact their TORO Distributor (Dealer) to obtain guarantee policies for your country, province or state. If for any

reason you are dissatisfied with your Distributor's service or have difficulty obtaining guarantee information, contact the TORO importer. If all other remedies fail, you may contact us at The Toro Company.

# MAINTENANCE RECORD

Date	Hours Used	Oil Change	Air Cleaner Service	Lubrication	Sharpen Reels	Winter Storage	Spring Service	Spark Plug Gap

# MAINTENANCE RECORD

Date	Hours Used	Oil Change	Air Cleaner Service	Lubri- cation	Sharpen Reels	Winter Storage	Spring Service	Spark Plug Gap