



Workman® 3200

Model No. 07360 - 240000001 and up.

Parts Catalog

Ordering Replacement Parts

To order replacement parts, please supply the part number, the quantity, and the description of each part desired.

Understanding Reference Numbers

Each Identified part in an illustration has a reference number. The reference number for a part also appears in the parts list, along with other information about the part.

This catalog uses two special reference number formats, one to indicate parts in a service assembly and another to indicate the quantity of a given part in an illustration.

Service Assembly Reference Numbers

Parts in service assemblies have reference numbers in the form a:b. The a represents the reference number of the entire service assembly and the b represents a sequential number unique to each part within the service assembly.

For example, a wheel assembly might be identified by reference number 6, the tire by 6:1, the valve by 6:2, and the wheel by 6:3. When you order the assembly identified by reference number 6, you receive all parts identified by reference numbers 6:1, 6:2, and 6:3. However, you may also order any part individually. Reference numbers of this type appear in illustrations and in part lists.

Reference Numbers Indicating Quantity

In an illustration, if a reference number indicates more than one part, the reference number has the form nX y. The n represents the quantity of the part, the X is the multiplication symbol, and the y represents the reference number.

For example, in an illustration, the reference number 2X 37 means that two of the parts identified by reference number 37 are indicated.

Contents

| Description | Page | Description | Page |
|--|-------------|--|-------------|
| Hood and Bumper Assembly | 4 | Engine Support Assembly | 36 |
| Dash Panel Assembly | 5 | Transaxle Assembly | 37 |
| Steering Assembly | 6 | Case Assembly Transaxle Assembly No. 105-4180 | 38 |
| Brake, Accelerator and Clutch Assembly | 8 | Gear Shaft Assembly Transaxle Assembly No. 105-4180 | 39 |
| Master Cylinder Assembly No. 104-6782 | 9 | Countershaft Assembly Transaxle Assembly No. 105-4180 | 40 |
| Hydraulic Brake Assembly | 10 | Shift Fork Assembly Transaxle Assembly No. 105-4180 | 41 |
| Clutch Linkage Assembly | 11 | Differential Gear Assembly Transaxle Assembly No. 105-4180 | 42 |
| Shroud and Seat Assembly | 12 | Hydraulic Filter and Relay Assembly | 43 |
| Left Hand Seat Assembly | 13 | Battery Assembly | 44 |
| Right Hand Seat Assembly | 14 | Fuel Tank and Air Cleaner Assembly | 45 |
| Roll-Over Protection System Assembly | 15 | Air Cleaner Assembly No. 106-6732 | 46 |
| Front Wheel Assembly | 16 | Cylinder Assembly | 47 |
| RH Front Brake Assembly No. 87-9170 | 17 | Crankshaft Assembly | 48 |
| LH Front Brake Assembly No. 87-9180 | 18 | Cylinder Head Assembly | 49 |
| Console Assembly | 19 | Manifold Assembly | 50 |
| Shift Assembly No. 106-7887 | 21 | Carburetor Assembly | 51 |
| Front Suspension Assembly | 22 | Cam Shaft Assembly | 52 |
| Front Control Arm Assembly | 23 | Oil Pan Assembly | 53 |
| Lift Valve and Hydraulic Assembly | 24 | Gear Cover Assembly | 54 |
| Hydraulic Valve Assembly No. 43-1950 | 26 | Gear Housing Assembly | 55 |
| Hydraulic Pump Assembly No. 106-6649 | 27 | Water Pump Assembly | 56 |
| Rear Frame Assembly | 28 | Governor Assembly | 57 |
| Rear Axle Assembly | 29 | Alternator Assembly | 58 |
| Rear Brake Assembly No. 93-7125 (Right) and 93-7126 (Left) | 30 | Starter Motor Assembly | 59 |
| Driveshaft Assembly No. 98-2918 | 31 | Ignition Assembly | 60 |
| Radiator and Hydraulic Pump Assembly | 32 | Gasket Assembly | 61 |
| Fan and Hydraulic Pump Drive Assembly | 33 | | |
| Tail Light and Fender Assembly | 34 | | |
| Engine Assembly | 35 | | |

Part Description Abbreviations

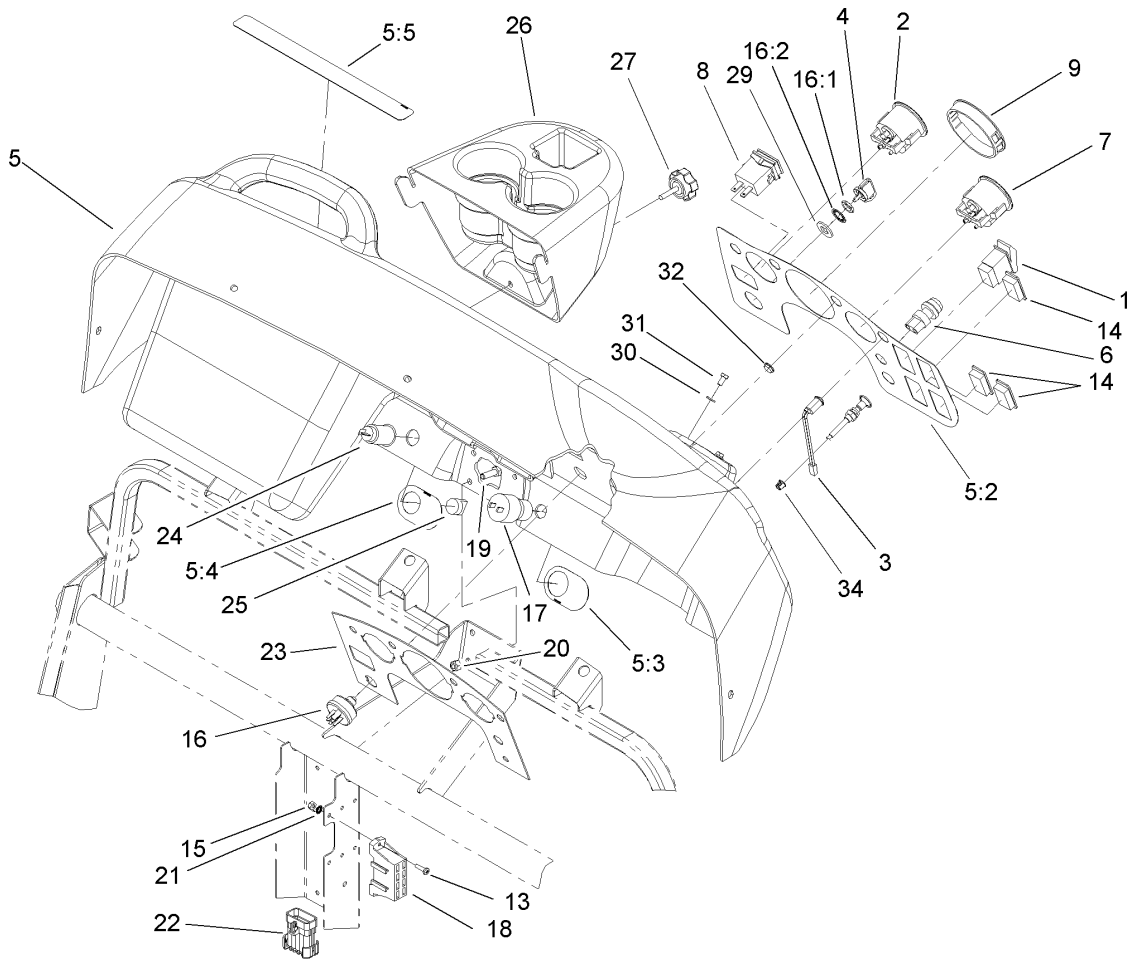
Part descriptions in this catalog may include the following abbreviations.

| | | | |
|-------------|--------------------------------|-------------|----------------------------------|
| AR. | as required | INC. | incorporated |
| ASM. | assembly | LH. | left hand |
| BBC. | blade brake clutch | NI. | nylon insert |
| CARR. | carriage | NPTF. | national pipe thread fine |
| DEG. | degrees | PFH. | phillips flat head |
| EXT. | external | PPH. | phillips pan head |
| FH. | flat head | PPHTF. | phillips pan head thread forming |
| GA. | gauge | PRH. | phillips round head |
| HF. | hex flange | PTH. | phillips truss head |
| HH. | hex head | PTO. | power-take-off |
| HHF. | hex head flange | RH. | right hand |
| HHFTF. | hex head flange thread forming | ROPS. | roll-over-protection-system |
| HJ. | hex jam | SFH. | slotted fillister head |
| HLH. | hex lag head | SHH. | slotted hex head |
| HOC. | height-of-cut | SHWH. | slotted hex washer head |
| HSBH. | hex socket button head | SPH. | slotted pan head |
| HSFH. | hex socket flat head | SQH. | square head |
| HSH. | hex socket head | SRH. | slotted round head |
| HWH. | hex washer head | STD. | standard |
| HWHTF. | hex washer head thread forming | TAP. | self tapping |
| HYD. | hydraulic | TTH. | torx truss head |

Footnotes

❶ Not illustrated

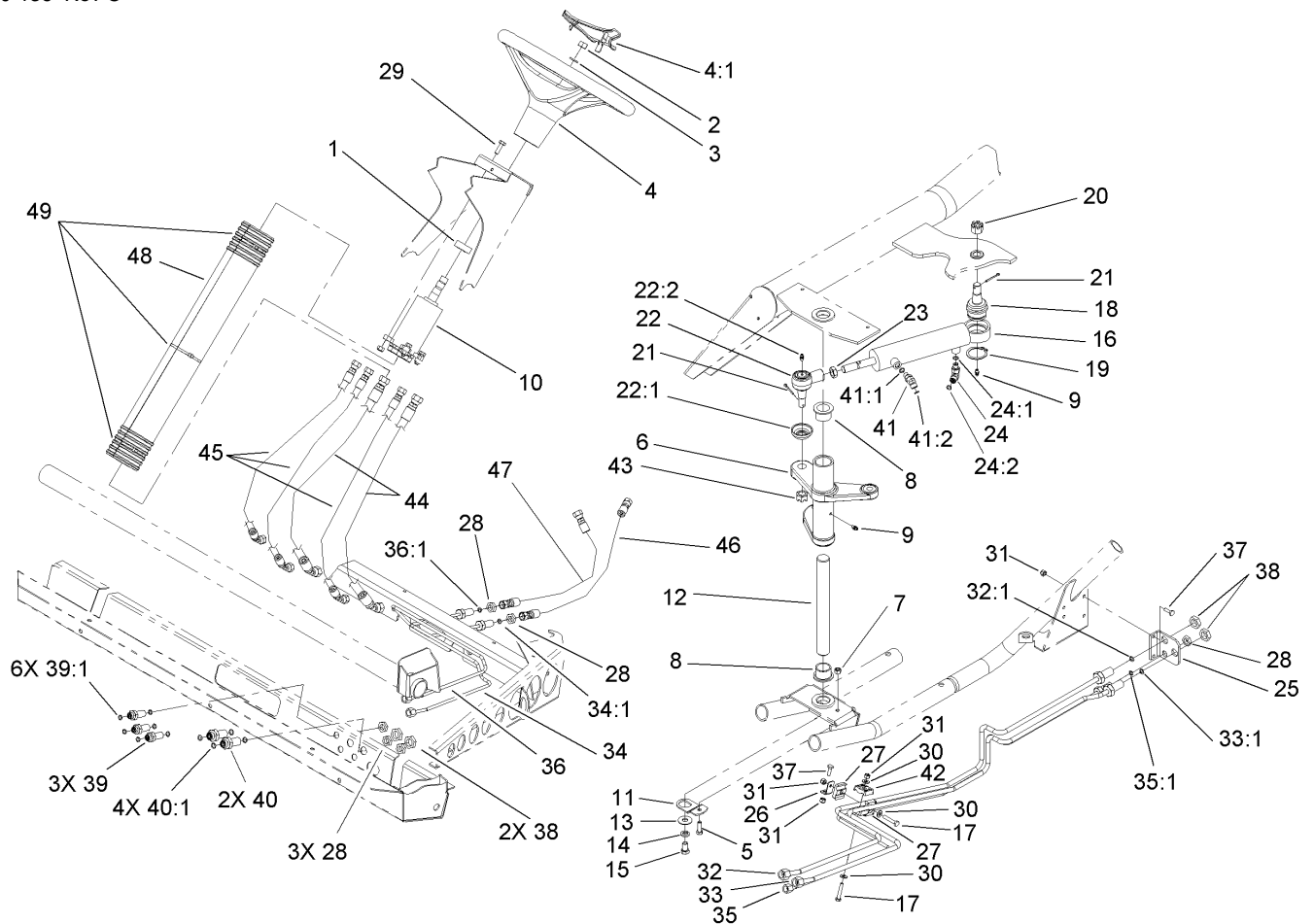
❷ Not serviced separately



Dash Panel Assembly

| Ref | Part No. | Qty. | Description |
|-------|----------|------|--------------------------|
| 1 | 95-8999 | 1 | Switch |
| 2 | 106-2406 | 1 | Gauge-Temperature |
| 3 | 95-7652 | 3 | Light-Indicator |
| 4 | 63-8360 | 1 | Key-Ignition |
| 5 | 106-7885 | 1 | Dash ASM |
| 5:2 | 106-2352 | 1 | Decal-Dash |
| 5:3 | 106-2355 | 1 | Decal-Switch, Supervisor |
| 5:4 | 106-2353 | 1 | Decal-Powerpoint |
| 5:5 | 106-2383 | 1 | Decal-Warning, Dash |
| 6 | 18-2830 | 1 | Button-Horn |
| 7 | 106-2405 | 1 | Gauge-Fuel |
| 8 | 94-4208 | 1 | Hourmeter |
| 9 | 106-2359 | 1 | Plug-Cap |
| 13 | 32105-13 | 2 | Screw-SHH |
| 14 | 99-7420 | 3 | Plug-Hole |
| 15 | 3296-2 | 2 | Nut-Lock |
| 16 | 27-2360 | 1 | Switch-Key |
| 16:1 | 218-446 | 1 | Nut-Hex |
| 16:2 | 218-447 | 1 | Washer-Lock |
| 17 | 94-5245 | 1 | Switch-Key |
| 18 | 106-7910 | 1 | Harness-Wire, Front |
| ●18:8 | 114241 | 2 | Fuse-7.5 Amp |
| ●18:9 | 109355 | 1 | Fuse-15 Amp |
| 19 | 322-4 | 4 | Screw-HH |

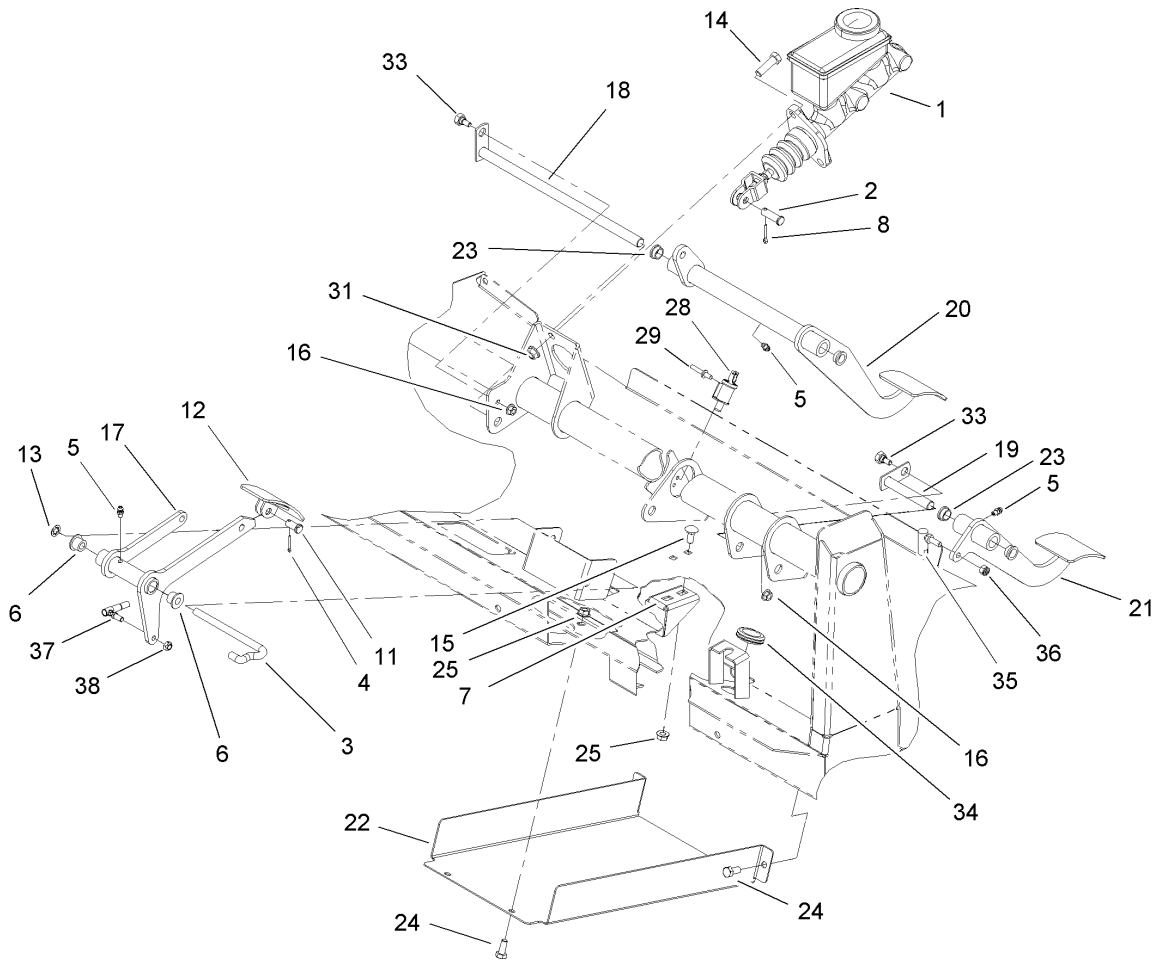
| Ref | Part No. | Qty. | Description |
|-------|-------------|------|--------------------|
| 20 | 3296-29 | 4 | Nut-Lock, NI |
| 21 | 3255-10 | 1 | Washer-Lock / EXT |
| 22 | 106-7908 | 1 | Harness-Wire, Rear |
| ●22:8 | 100-4918 | 2 | Diode |
| 23 | 106-2360-03 | 1 | Plate-Dash |
| 24 | 99-7411 | 1 | Point-Power |
| 25 | 99-7416 | 1 | Cap |
| 26 | 106-2358 | 1 | Cover-Reservoir |
| 27 | 106-7017 | 1 | Knob |
| 29 | 9202624 | 1 | Washer |
| 30 | 33093-00 | 2 | Washer-Flat |
| 31 | 33113-012 | 2 | Screw-HH |
| 32 | 2410-64 | 1 | Plug-Button |
| 34 | 104-9368 | 1 | Plug-Dome |



Steering Assembly

| Ref | Part No. | Qty. | Description |
|------|-----------|------|--------------------------|
| 1 | 21-9260 | 1 | Cover-Dust |
| 2 | 3220-6 | 1 | Nut-Jam |
| 3 | 3253-8 | 1 | Washer-Lock |
| 4 | 98-1471 | 1 | Wheel-Steering |
| 4:1 | 98-1468 | 1 | Cover-Wheel, Steering |
| 5 | 322-5 | 1 | Screw-HH |
| 6 | 106-2536 | 1 | Arm-Pitman |
| 7 | 3296-29 | 1 | Nut-Lock, NI |
| 8 | 94-1291 | 2 | Bushing |
| 9 | 302-5 | 2 | Fitting-Grease |
| 10 | 106-6726 | 1 | Steering Pump ASM |
| 10:1 | 106-6716 | 1 | Seal Kit |
| 11 | 106-2287 | 1 | Plate |
| 12 | 106-2271 | 1 | Shaft-Pivot |
| 13 | 3256-5 | 1 | Washer-Flat |
| 14 | 3253-6 | 1 | Washer-Lock |
| 15 | 324-2 | 1 | Screw-HH |
| 16 | 106-2262 | 1 | Cylinder-HYD |
| 16:1 | 106-6712 | 1 | Seal Kit |
| 17 | 321-9 | 2 | Screw-HH |
| 18 | 106-6774 | 1 | Joint-Ball |
| 19 | 32151-104 | 1 | Ring-Retaining, External |
| 20 | 32136-14 | 1 | Nut-SHH |
| 21 | 3272-12 | 2 | Pin-Cotter |

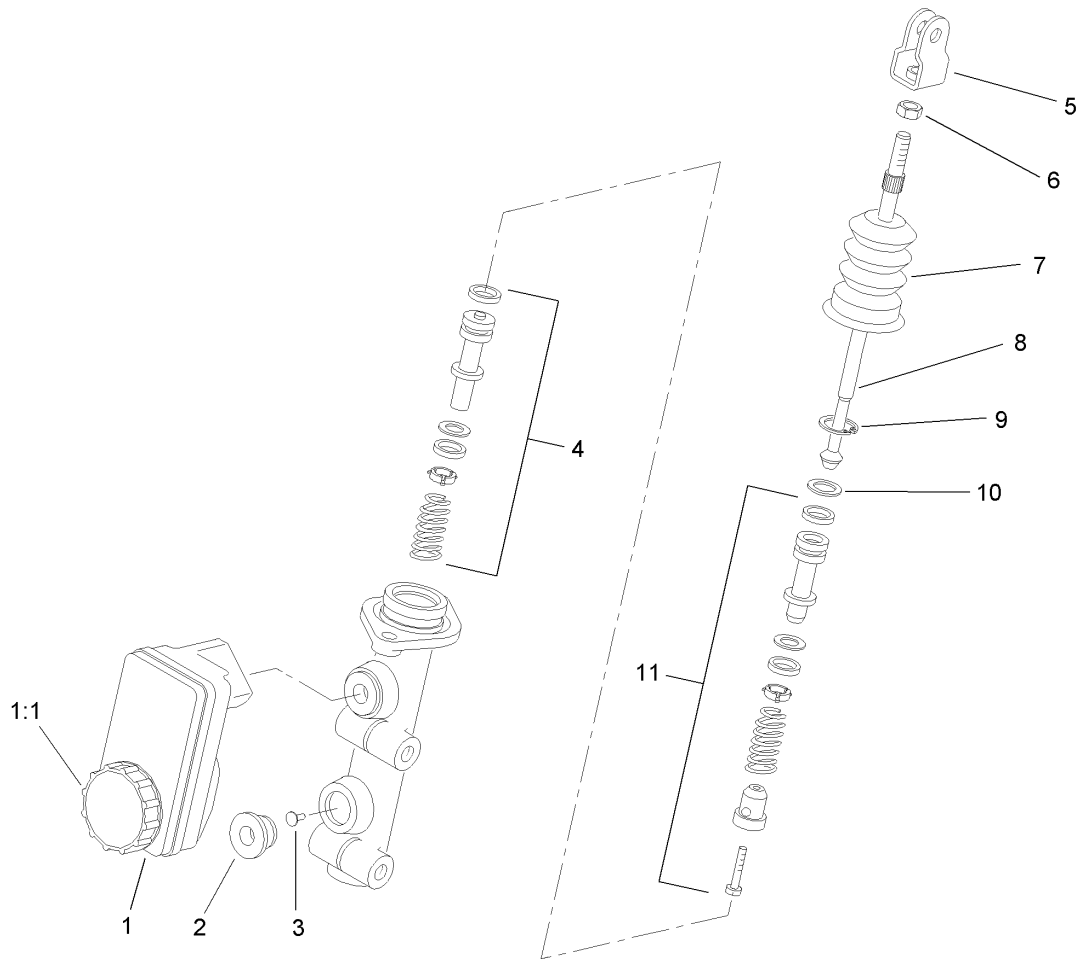
| Ref | Part No. | Qty. | Description |
|------|-------------|------|------------------------|
| 22 | 106-6898 | 1 | Joint-Ball |
| 22:1 | 106-6896 | 1 | Seal |
| 22:2 | 302-5 | 1 | Fitting-Grease |
| 23 | 3220-11 | 1 | Nut-Jam |
| 24 | 340-132 | 1 | Fitting-HYD, 90 DEG |
| 24:1 | 237-78 | 1 | O-Ring |
| 24:2 | 237-21 | 1 | O-Ring |
| 25 | 106-7801-03 | 1 | Bracket-Line, Steering |
| 26 | 106-7807 | 1 | Bracket-Line, Steering |
| 27 | 106-7839 | 2 | Clamp-Tube |
| 28 | 340-78 | 6 | Locknut-Bulkhead |
| 29 | 33114-020 | 4 | Screw-HH |
| 30 | 3256-22 | 3 | Washer-Flat |
| 31 | 3296-42 | 5 | Nut-Lock, NI |
| 32 | 106-7802 | 1 | Tube-HYD |
| 32:1 | 237-22 | 1 | O-Ring |
| 33 | 106-7803 | 1 | Tube-HYD |
| 33:1 | 237-22 | 1 | O-Ring |
| 34 | 106-7804 | 1 | Tube-HYD |
| 34:1 | 237-21 | 1 | O-Ring |
| 35 | 106-7805 | 1 | Tube-HYD |
| 35:1 | 237-21 | 1 | O-Ring |
| 36 | 106-7806 | 1 | Tube-HYD |
| 36:1 | 237-21 | 1 | O-Ring |



Brake, Accelerator and Clutch Assembly

| Ref | Part No. | Qty. | Description |
|-----|-------------|------|--------------------------|
| 1 | 104-6782 | 1 | Cylinder-Master |
| 2 | 283-2 | 1 | Pin-Clevis |
| 3 | 87-2880 | 1 | Shaft-Pedal, Accelerator |
| 4 | 3272-6 | 1 | Pin-Cotter |
| 5 | 302-5 | 3 | Fitting-Grease |
| 6 | 256-259 | 2 | Bushing-Flange |
| 7 | 106-2421 | 1 | Bracket-Mount, Cable |
| 8 | 3272-10 | 1 | Pin-Cotter |
| 11 | 283-85 | 1 | Pin-Clevis |
| 12 | 93-8969-03 | 1 | Pedal |
| 13 | 32151-56 | 1 | Ring-Retaining, External |
| 14 | 323-7 | 2 | Screw-HH |
| 15 | 3230-1 | 2 | Bolt-CARR |
| 16 | 32128-33 | 2 | Nut-HF |
| 17 | 106-2471-03 | 1 | Arm-Pedal, Accelerator |
| 18 | 106-2475 | 1 | Brake Shaft ASM |
| 19 | 106-2476 | 1 | Clutch Shaft ASM |
| 20 | 106-2461-03 | 1 | Brake Pedal ASM |
| 21 | 106-2457-03 | 1 | Clutch Pedal ASM |
| 22 | 106-2427-03 | 1 | Cover |
| 23 | 256-156 | 4 | Bushing-Flange |
| 24 | 322-3 | 4 | Screw-HH |
| 25 | 32128-20 | 6 | Nut-HF |
| 28 | 55-7120 | 1 | Switch-Brake, Parking |

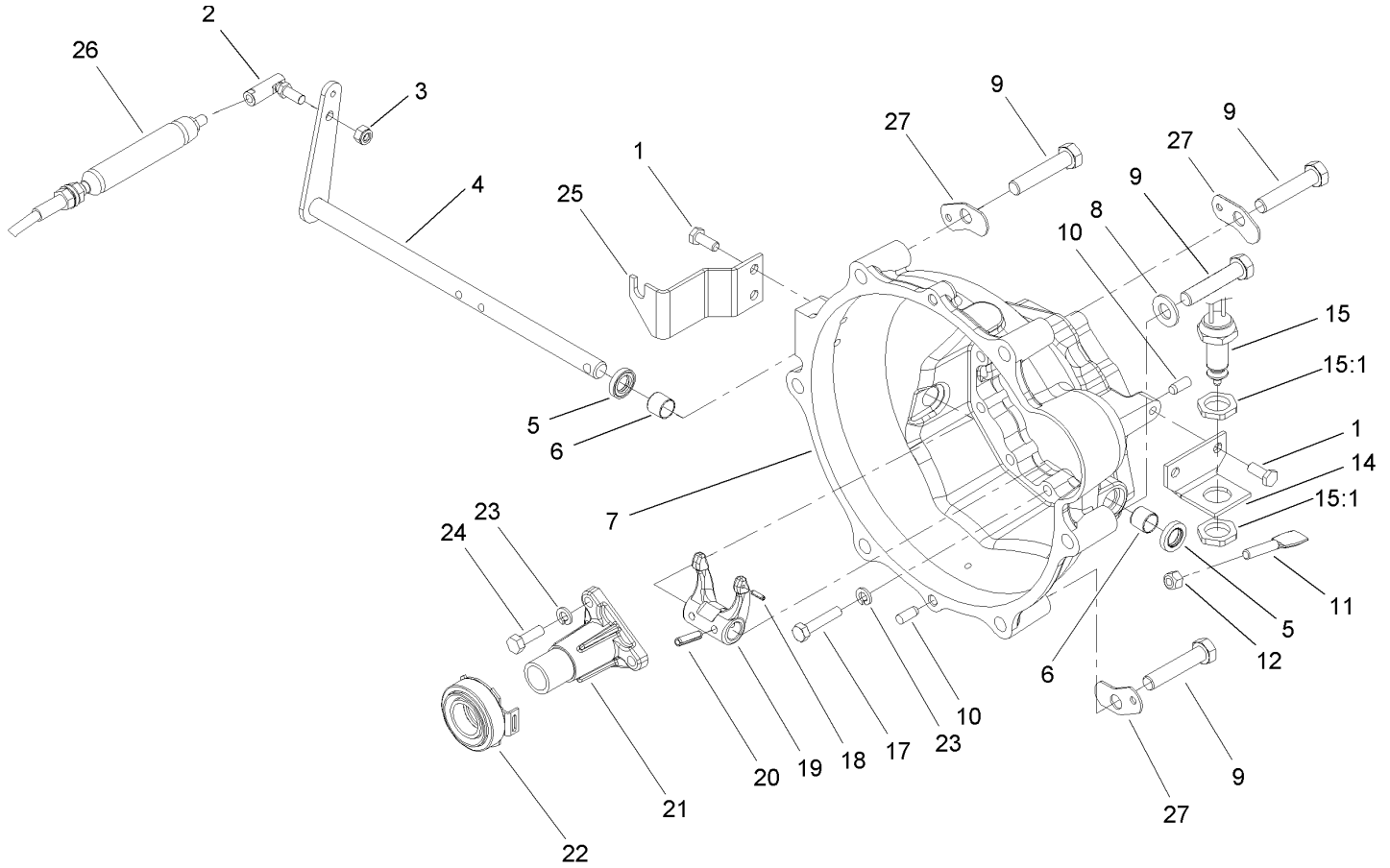
| Ref | Part No. | Qty. | Description |
|-----|----------|------|-------------------------|
| 29 | 3269-23 | 2 | Rivet-Pop |
| 31 | 3290-357 | 2 | Nut-HHF, Whiz |
| 33 | 63-3410 | 2 | Screw-Shoulder |
| 34 | 240-5 | 1 | Grommet |
| 35 | 2411-34 | 1 | Joint-Ball |
| 36 | 3296-3 | 1 | Nut-Lock |
| 37 | 18-1720 | 1 | Governor Ball Joint ASM |
| 38 | 3296-13 | 1 | Nut-Lock NI |



Master Cylinder Assembly No. 104-6782

| Ref | Part No. | Qty. | Description |
|-----|----------|------|----------------------|
| 1 | 104-6845 | 1 | Reservoir ASM |
| 1:1 | 92-4112 | 1 | Cap ASM |
| 2 | 93-8971 | 2 | Seal-Port, Flange |
| 3 | 92-4103 | 1 | Pin-Stop |
| 4 | 92-4102 | 1 | Secondary Piston ASM |
| 5 | 92-4110 | 1 | Clevis |
| 6 | 21-0360 | 1 | Nut-Hex |
| 7 | 94-5209 | 1 | Cover-Dust |
| 8 | 94-5210 | 1 | Rod-Push |
| 9 | 92-4109 | 1 | Ring-Snap |
| 10 | 92-4108 | 1 | Retainer-Washer |
| 11 | 92-4101 | 1 | Primary Piston ASM |

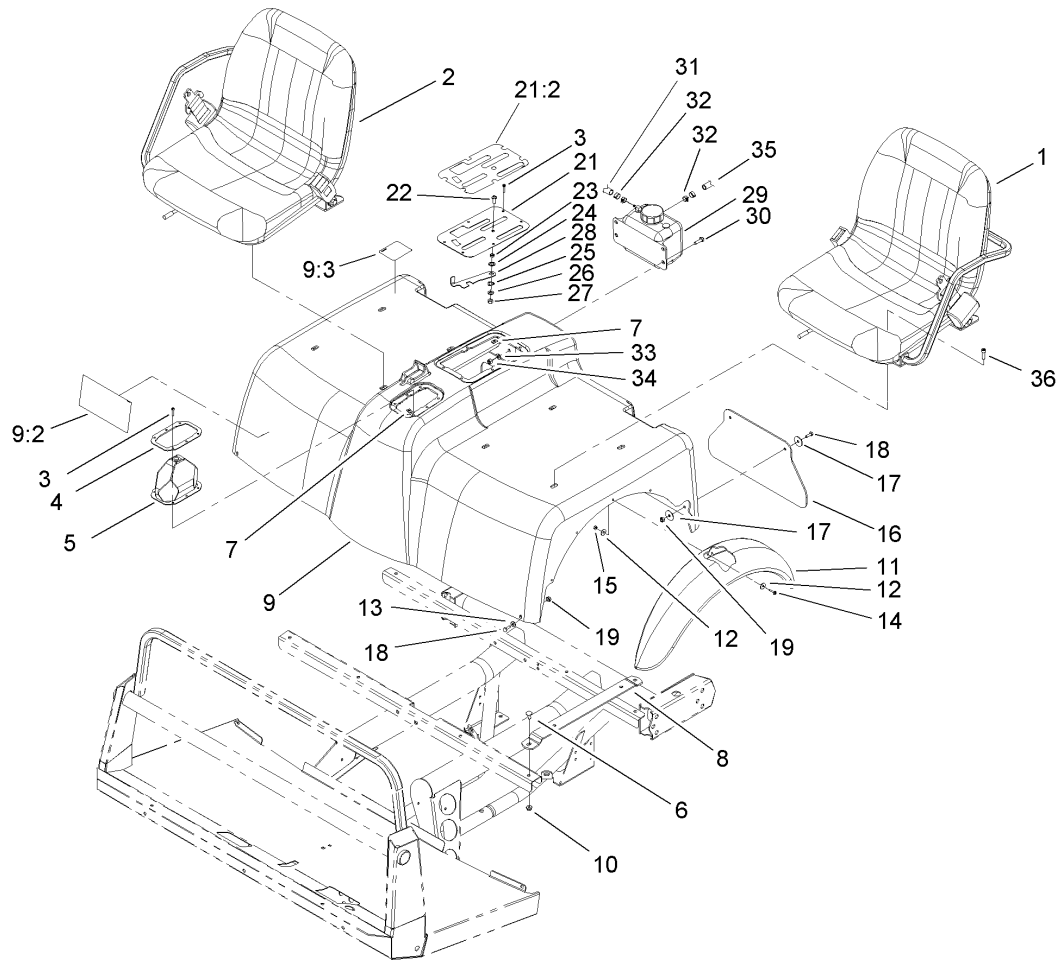
| | | | |
|--|--|--|--|
| | | | |
|--|--|--|--|



Clutch Linkage Assembly

| Ref | Part No. | Qty. | Description |
|------|-----------|------|--------------------------|
| 1 | 33114-020 | 4 | Screw-HH |
| 2 | 2411-33 | 1 | Balljoint-RH (W/Grommet) |
| 3 | 3296-4 | 1 | Nut-Lock |
| 4 | 105-1702 | 1 | Release Shaft ASM |
| 5 | 87-1920 | 2 | Seal-Oil |
| 6 | 87-3770 | 2 | Bushing-Housing, Bell |
| 7 | 104-9249 | 1 | Housing-Bell |
| 8 | 3256-26 | 3 | Washer-Flat |
| 9 | 3215-2 | 6 | Screw-HH |
| 10 | 87-1910 | 4 | Pin-Dowel |
| 11 | 87-5360 | 1 | Paddle-Clutch, Switch |
| 12 | 3296-29 | 1 | Nut-Lock, NI |
| 14 | 87-5350 | 1 | Bracket-Clutch, Switch |
| 15 | 87-5490 | 1 | Switch-Clutch |
| 15:1 | 3218-20 | 2 | Nut-Jam |
| 17 | 33114-040 | 9 | Screw-HH |
| 18 | 32121-7 | 1 | Pin-Roll, Slotted |
| 19 | 87-5300 | 1 | Fork-Clutch |
| 20 | 32121-24 | 2 | Pin-Spring |
| 21 | 87-5320 | 1 | Release-Guide |
| 22 | 87-2100 | 1 | Bearing-Out, Throw |
| 23 | 3253-4 | 12 | Washer-Lock |
| 24 | 33114-025 | 3 | Screw-HH |
| 25 | 106-2523 | 1 | Bracket-Clutch |

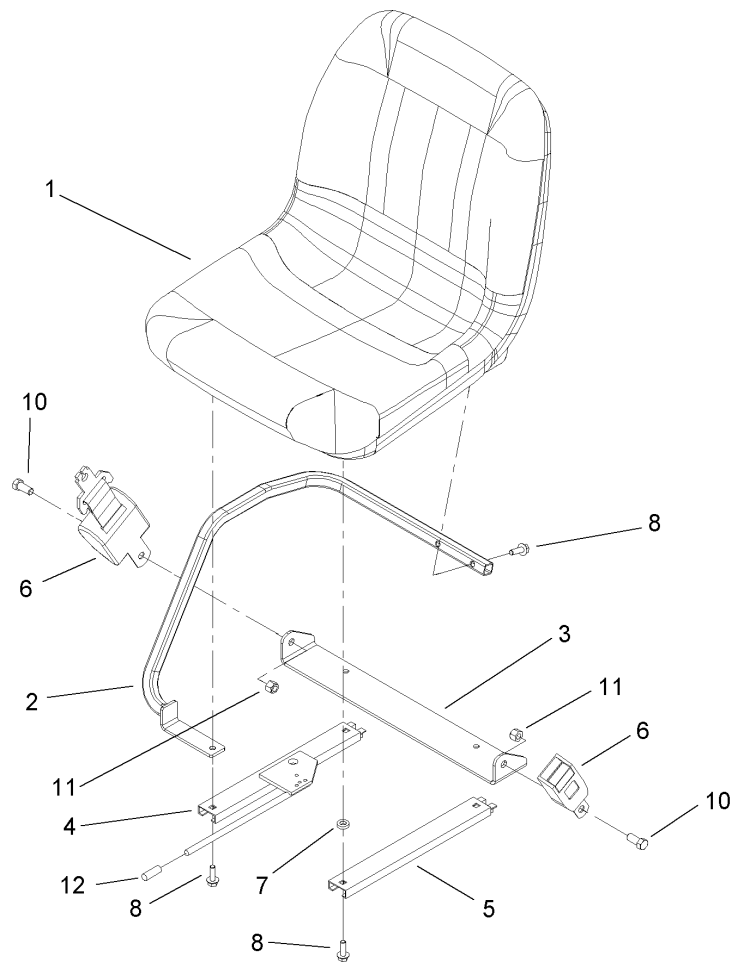
| Ref | Part No. | Qty. | Description |
|-----|----------|------|-----------------|
| 26 | 106-2450 | 1 | Cable-Clutch |
| 27 | 87-6410 | 3 | Bracket-Harness |



Shroud and Seat Assembly

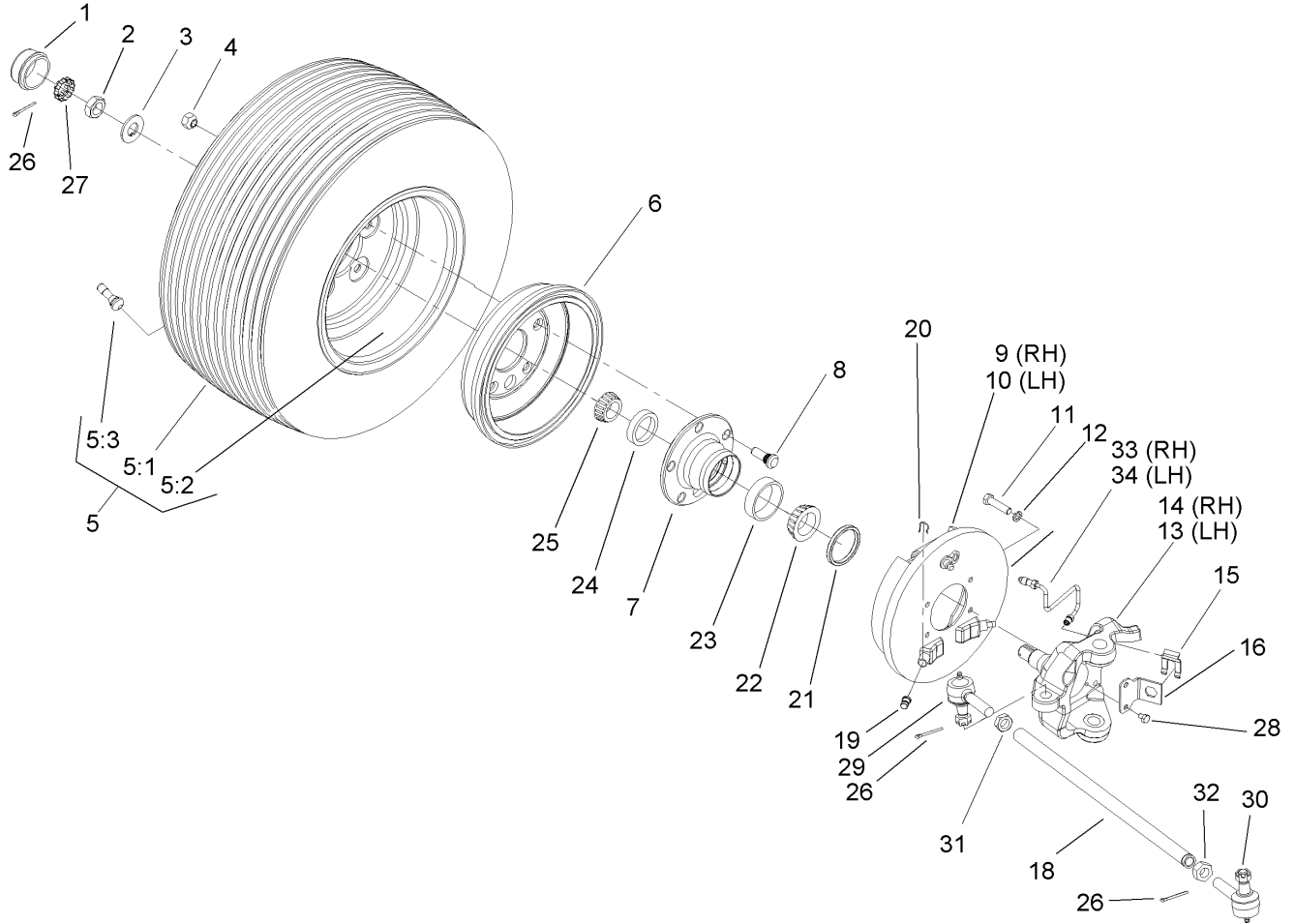
| Ref | Part No. | Qty. | Description |
|------|-------------|------|------------------------|
| ① | | 1 | LH Seat ASM |
| ② | | 1 | RH Seat ASM |
| 3 | 32144-36 | 12 | Screw-PPH |
| 4 | 87-3760-03 | 1 | Plate-Boot, Shift |
| 5 | 87-8620 | 1 | Shift Boot ASM |
| 6 | 3230-1 | 8 | Bolt-CARR |
| 7 | 106-2388 | 12 | Clip-Fastener |
| 8 | 107-7957-03 | 4 | Seat Bracket ASM |
| 9 | 106-2362 | 1 | Seatbase ASM |
| 9:2 | 106-2384 | 1 | Decal-Reference, Quick |
| 9:3 | 93-9448 | 1 | Decal-Fuel |
| 10 | 104-8300 | 16 | Nut-Flange, NI |
| 11 | 106-2375 | 2 | Fender-Front |
| 12 | 3256-61 | 20 | Washer-Flat |
| 13 | 3256-22 | 2 | Washer-Flat |
| 14 | 32105-13 | 10 | Screw-SHH |
| 15 | 3296-2 | 10 | Nut-Lock |
| 16 | 106-2378 | 2 | Mudflap |
| 17 | 3256-55 | 8 | Washer-Flat |
| 18 | 321-4 | 6 | Screw-HH |
| 19 | 3296-16 | 6 | Nut-Lock, NI |
| 21 | 106-7886 | 1 | Control Plate ASM |
| 21:2 | 106-2377 | 1 | Decal-Console |
| 22 | 3274-55 | 1 | Screw-HSBH |

| Ref | Part No. | Qty. | Description |
|-----|-------------|------|-------------------|
| 23 | 82-4240 | 1 | Spacer-Bearing |
| 24 | 94-8196 | 1 | Washer-Nylon |
| 25 | 3290-221 | 1 | Washer-Spring |
| 26 | 3256-23 | 1 | Washer-Flat |
| 27 | 3296-29 | 1 | Nut-Lock, NI |
| 28 | 106-7984-03 | 1 | Lever-Detent |
| 29 | 87-3710 | 1 | Reservoir-Coolant |
| 30 | 322-5 | 4 | Screw-HH |
| 31 | 71-3381 | 1 | Hose-Fuel |
| 32 | 92-2379 | 2 | Clamp-Hose |
| 33 | 3256-23 | 4 | Washer-Flat |
| 34 | 3296-29 | 4 | Nut-Lock, NI |
| 35 | 71-3383 | 1 | Hose-Fuel |
| 36 | 3274-22 | 8 | Screw-HSH |



Right Hand Seat Assembly

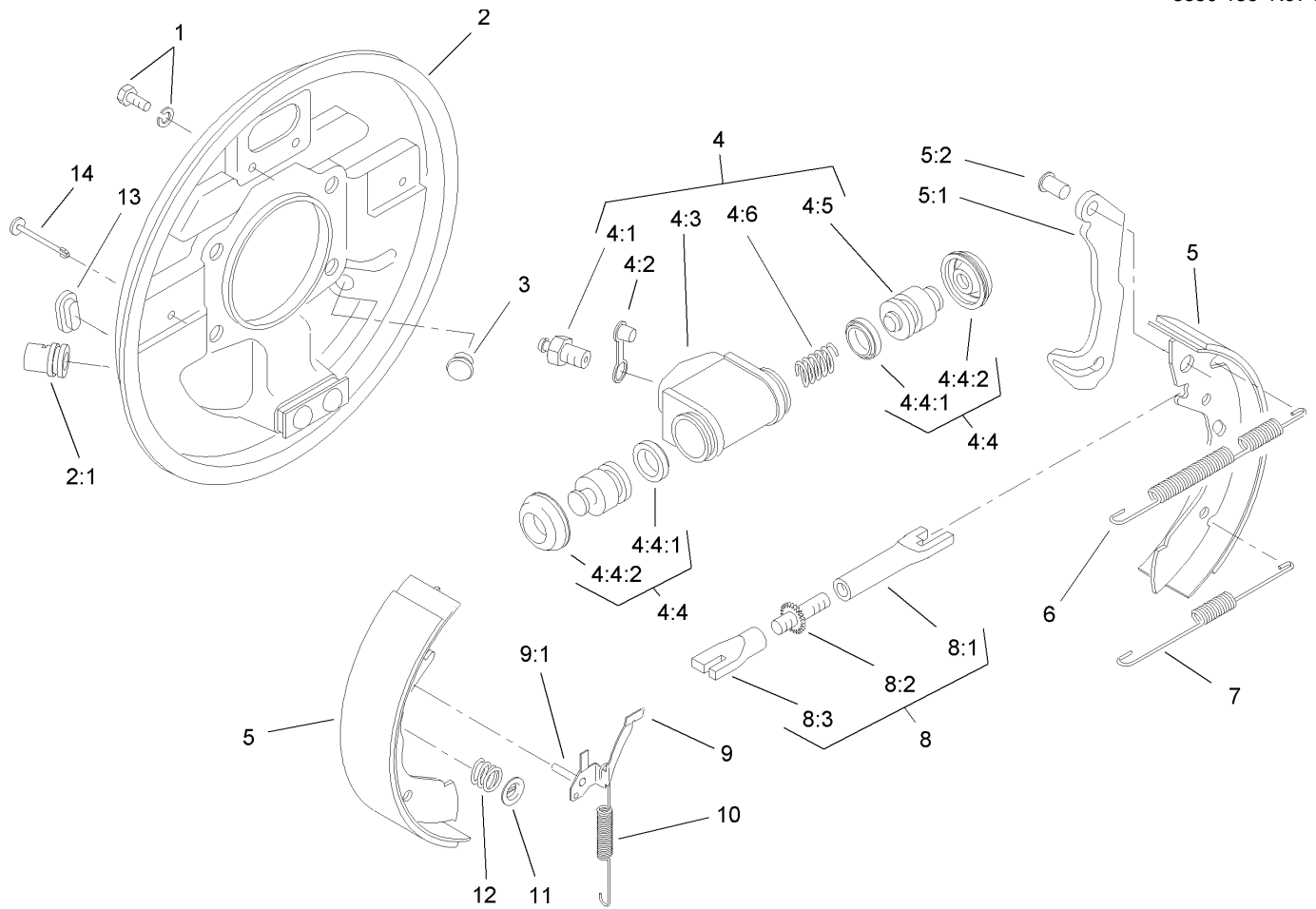
| Ref | Part No. | Qty. | Description | |
|-----|----------|------|-------------------------|--|
| 1 | 106-6672 | 1 | Seat | |
| 2 | 106-7844 | 1 | RH Armrest ASM | |
| 3 | 106-7845 | 1 | Bracket-Belt, Seat | |
| 4 | 106-7847 | 1 | Adjuster-Seat, W/Handle | |
| 5 | 107-7959 | 1 | Adjuster-Slave, 7 Inch | |
| 6 | 106-7848 | 1 | Seat Belt ASM | |
| 7 | 80-7730 | 1 | Spacer | |
| 8 | 3234-29 | 6 | Screw-HHF | |
| 10 | 3212-4 | 2 | Screw-HH | |
| 11 | 3296-7 | 2 | Nut-Lock | |
| 12 | 106-7953 | 2 | Grip-Gray | |



Front Wheel Assembly

| Ref | Part No. | Qty. | Description |
|-----|----------|------|---------------------------|
| 1 | 241-119 | 2 | Cap-Dust |
| 2 | 3220-7 | 2 | Nut-Jam |
| 3 | 93-0309 | 2 | Washer-Tab |
| 4 | 23-7270 | 10 | Nut-Wheel |
| 5 | | 2 | Tire And Wheel ASM |
| 5:1 | 106-7862 | 1 | Tire |
| 5:2 | 87-5720 | 1 | Front Rim ASM |
| 5:3 | 232-27 | 1 | Stem-Valve |
| 6 | 93-7128 | 2 | Drum-Brake |
| 7 | 87-5560 | 2 | Hub-Front |
| 8 | 87-8730 | 10 | Stud |
| 9 | 87-9170 | 1 | RH Front Brake ASM |
| 10 | 87-9180 | 1 | LH Front Brake ASM |
| 11 | 323-6 | 8 | Screw-HH |
| 12 | 3253-21 | 8 | Washer-Lock |
| 13 | 106-6745 | 1 | Spindle-LH |
| 14 | 106-6746 | 1 | Spindle-RH |
| 15 | 87-3580 | 2 | Clip-Retainer |
| 16 | 106-6747 | 2 | Bracket-Spindle |
| 18 | 106-2327 | 2 | Tie Rod-Steering |
| 19 | 87-3450 | 2 | Plug-Plate, Brake (Front) |
| 20 | 87-3310 | 2 | Clip-Cable, Brake |
| 21 | 87-3590 | 2 | Seal-Bearing |
| 22 | 254-106 | 2 | Cone-Bearing, Tapered |

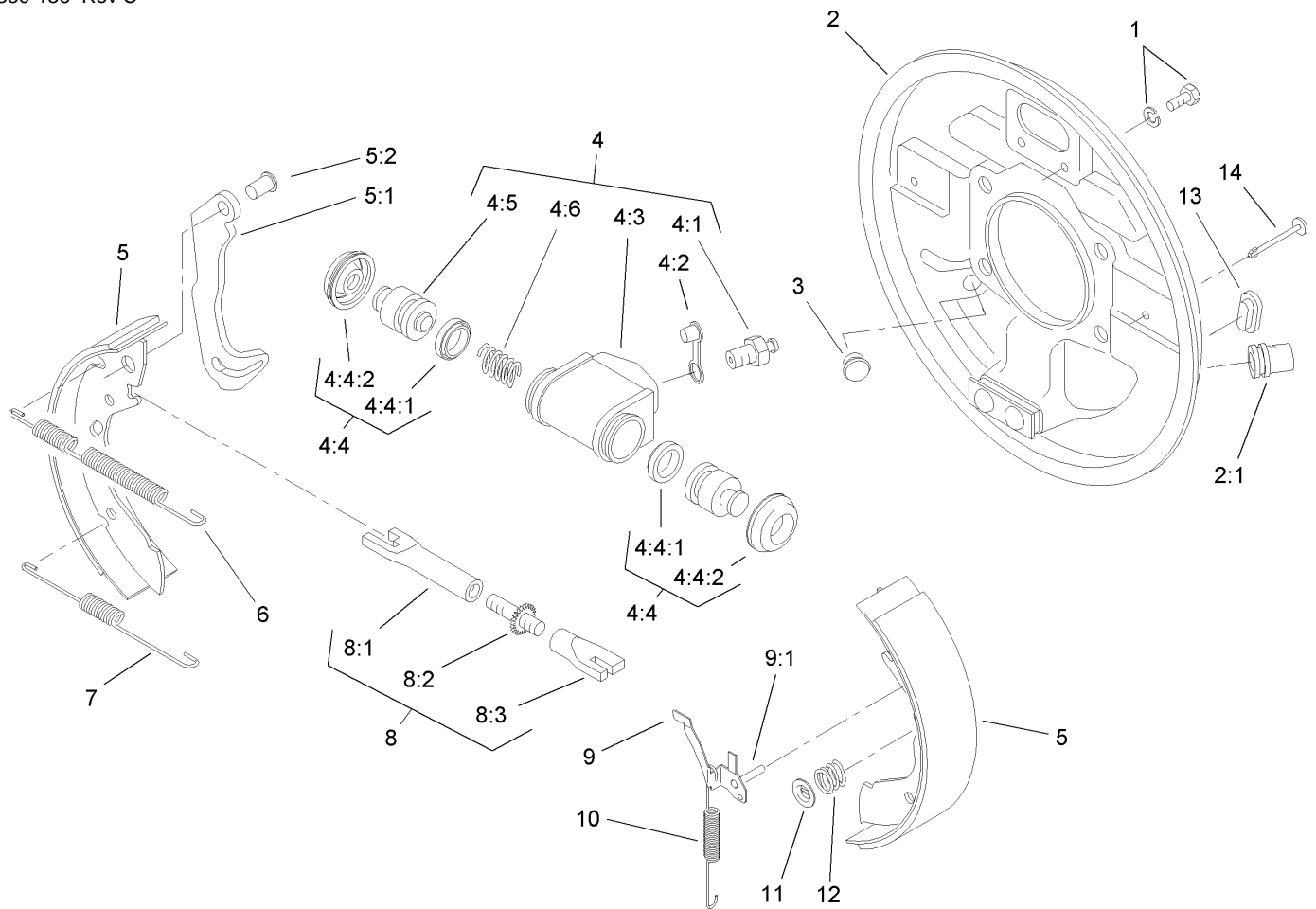
| Ref | Part No. | Qty. | Description |
|-----|----------|------|-----------------------|
| 23 | 254-107 | 2 | Cup-Bearing, Tapered |
| 24 | 254-72 | 2 | Bearing-Cup, Tapered |
| 25 | 254-94 | 2 | Bearing-Cone, Tapered |
| 26 | 3272-12 | 2 | Pin-Cotter |
| 27 | 93-0307 | 2 | Nut-Lock, Retainer |
| 28 | 321-1 | 4 | Screw-HH |
| 29 | 106-6694 | 2 | Rod End-Tie, RH |
| 30 | 106-6695 | 2 | Rod End-Tie, LH |
| 31 | 3220-11 | 2 | Nut-Jam |
| 32 | 3218-21 | 2 | Nut-Jam |
| 33 | 106-7970 | 1 | RH Brake Tube ASM |
| 34 | 106-7971 | 1 | LH Brake Tube ASM |



RH Front Brake Assembly No. 87-9170

| Ref | Part No. | Qty. | Description |
|-------|----------|------|---------------------------------|
| 1 | 92-4135 | 2 | Bolt-Set |
| 2 | 92-4100 | 1 | RH Backplate ASM |
| 2:1 | | 1 | Guide-Pipe |
| 3 | 92-4146 | 1 | Plunger ASM |
| 4 | 92-4118 | 1 | Wheel Cylinder ASM |
| 4:1 | 92-4113 | 1 | Screw-Bleed |
| 4:2 | 92-4114 | 1 | Cap-Screw, Bleed |
| 4:3 | | 1 | Body |
| 4:4 | 92-4119 | 1 | Seal Kit |
| 4:4:1 | | 2 | Seal-L Type |
| 4:4:2 | | 2 | Cover-Dust |
| 4:5 | | 2 | Piston |
| 4:6 | | 1 | Spring |
| 5 | 92-4143 | 1 | Lined Shoe Kit |
| 5:1 | | 1 | Lever-Operating |
| 5:2 | | 1 | Pin |
| 6 | 92-4148 | 1 | Spring-Return, Shoe (Upper, RH) |
| 7 | 92-4149 | 1 | Spring-Return, Shoe (Lower) |
| 8 | 92-4145 | 1 | RH Adjustor ASM |
| 8:1 | | 1 | Pushrod-Female |
| 8:2 | | 1 | Bolt-Adjuster |
| 8:3 | | 1 | Sleeve-Adjuster |
| 9 | 92-4124 | 1 | RH Pawl Lever ASM |
| 9:1 | | 1 | Pin-Pawl |

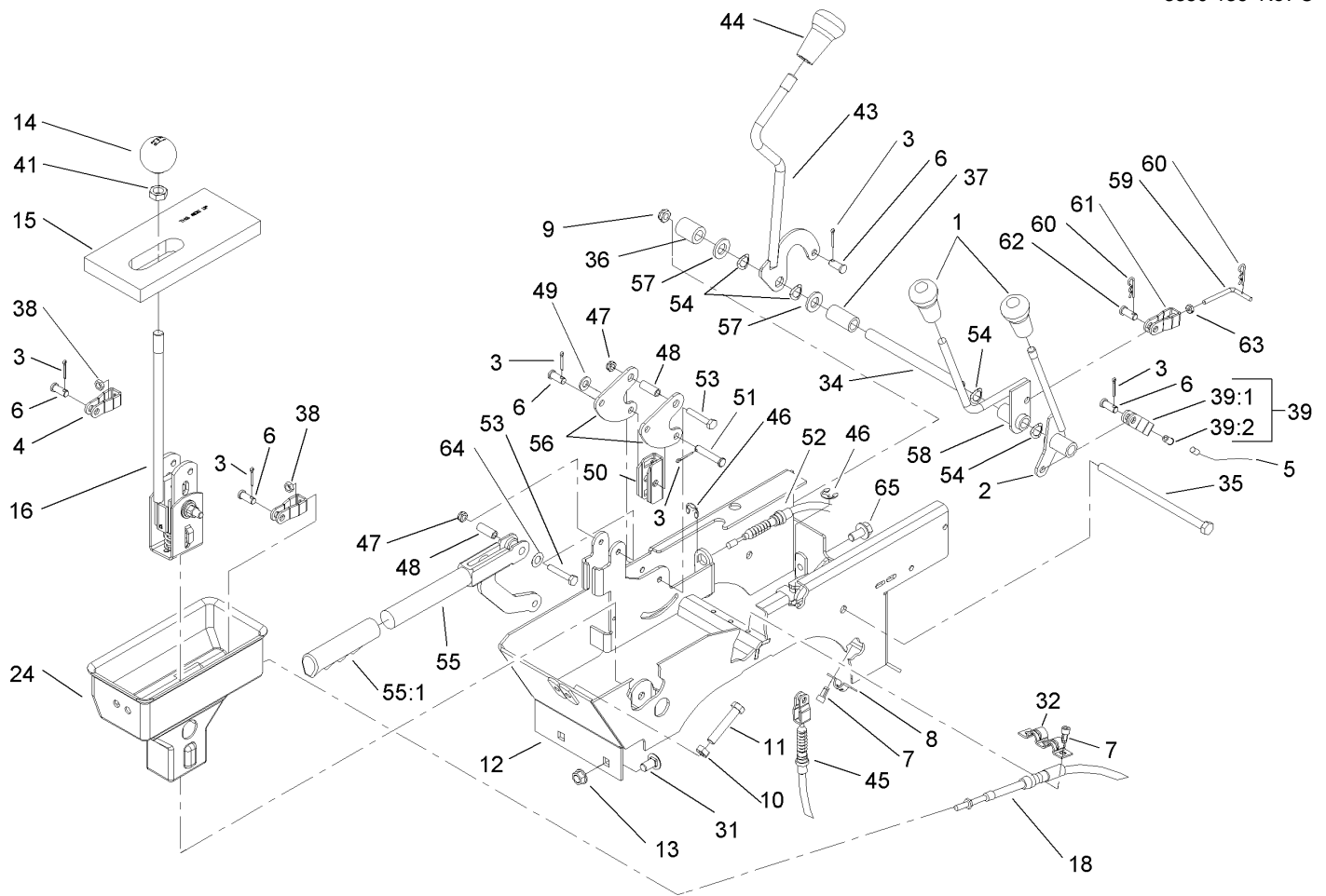
| Ref | Part No. | Qty. | Description |
|-----|----------|------|------------------------|
| 10 | 92-4151 | 1 | Spring-Adjuster, RH |
| 11 | 92-4131 | 2 | Washer-Hold Down, Shoe |
| 12 | 92-4152 | 2 | Spring-Hold Down, Shoe |
| 13 | 92-4134 | 2 | Plug-Inspection |
| 14 | 92-4133 | 2 | Pin-Hold Down, Shoe |



LH Front Brake Assembly No. 87-9180

| Ref | Part No. | Qty. | Description |
|-------|----------|------|---------------------------------|
| 1 | 92-4135 | 2 | Bolt-Set |
| 2 | 92-4136 | 1 | LH Backplate ASM |
| 2:1 | | 1 | Guide-Pipe |
| 3 | 92-4146 | 1 | Plunger ASM |
| 4 | 92-4117 | 1 | Wheel Cylinder ASM |
| 4:1 | 92-4113 | 1 | Screw-Bleed |
| 4:2 | 92-4114 | 1 | Cap-Screw, Bleed |
| 4:3 | | 1 | Body |
| 4:4 | 92-4119 | 1 | Seal Kit |
| 4:4:1 | | 2 | Seal-L Type |
| 4:4:2 | | 2 | Cover-Dust |
| 4:5 | | 2 | Piston |
| 4:6 | | 1 | Spring |
| 5 | 92-4143 | 1 | Lined Shoe Kit |
| 5:1 | | 1 | Lever-Operating |
| 5:2 | | 1 | Pin |
| 6 | 92-4147 | 1 | Spring-Return, Shoe (Upper, LH) |
| 7 | 92-4149 | 1 | Spring-Return, Shoe (Lower) |
| 8 | 92-4144 | 1 | LH Adjuster ASM |
| 8:1 | | 1 | Pushrod-Female |
| 8:2 | | 1 | Bolt-Adjuster |
| 8:3 | | 1 | Sleeve-Adjuster |
| 9 | 92-4123 | 1 | LH Pawl Lever ASM |
| 9:1 | | 1 | Pin-Pawl |

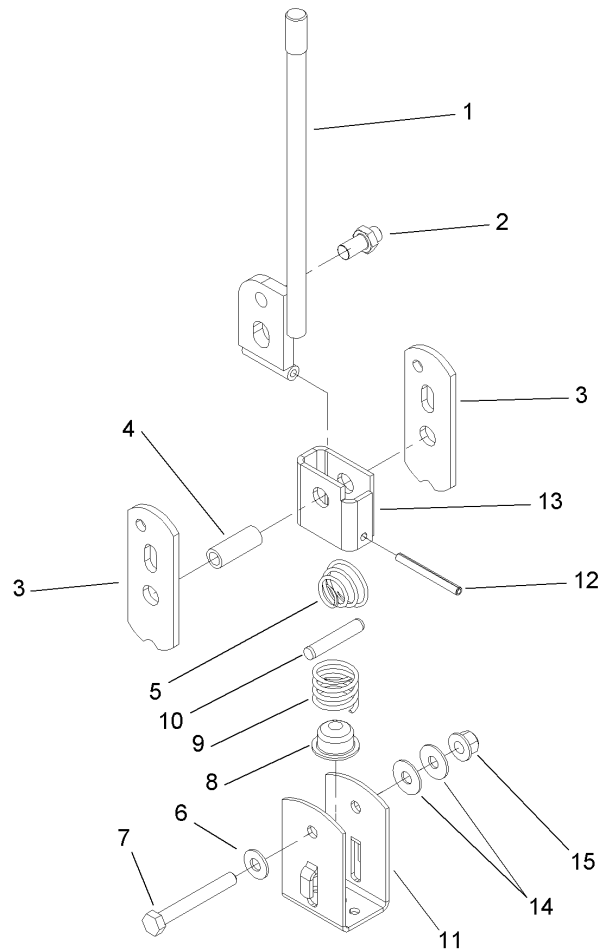
| Ref | Part No. | Qty. | Description |
|-----|----------|------|------------------------|
| 10 | 92-4150 | 1 | Spring-Adjuster, LH |
| 11 | 92-4131 | 2 | Washer-Hold Down, Shoe |
| 12 | 92-4152 | 2 | Spring-Hold Down, Shoe |
| 13 | 92-4134 | 2 | Plug-Inspection |
| 14 | 92-4133 | 2 | Pin-Hold Down, Shoe |



Console Assembly

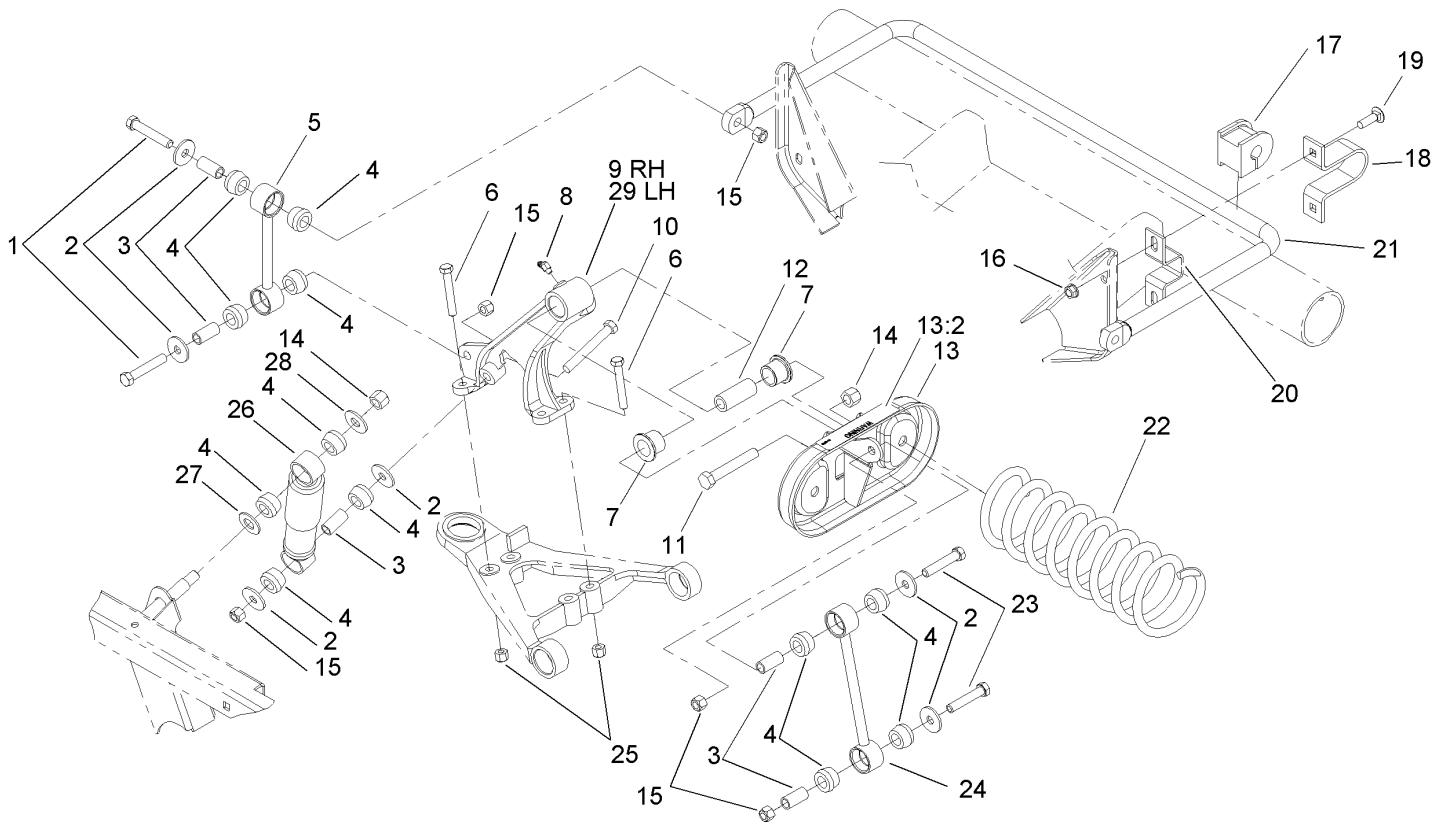
| Ref | Part No. | Qty. | Description |
|-----|-------------|------|-----------------------|
| 1 | 106-7903 | 2 | Knob-Control |
| 2 | 106-7828 | 1 | Lever ASM |
| 3 | 3272-6 | 6 | Pin-Cotter |
| 4 | 87-2310 | 2 | Clevis-Cable |
| 5 | 106-6698 | 1 | Cable-Hi-Low |
| 6 | 283-62 | 5 | Pin-Clevis |
| 7 | 65-5220 | 5 | Screw-Forming, Thread |
| 8 | 87-4340 | 1 | Clamp-Cable |
| 9 | 3296-59 | 1 | Nut-Lock, NI |
| 10 | 3217-7 | 2 | Nut-Hex |
| 11 | 323-10 | 2 | Screw-HH |
| 12 | 106-7819-03 | 1 | Lever Support ASM |
| 13 | 3290-357 | 2 | Nut-HHF, Whiz |
| 14 | 87-6720 | 1 | Knob-Shift |
| 15 | 87-6570 | 1 | Seal-Boot, Lower |
| 16 | 106-7887 | 1 | Shift ASM |
| 18 | 87-4260 | 2 | Cable-Selector, Gear |
| 24 | 106-2376 | 1 | Boot-Shift, Lower |
| 31 | 3231-21 | 2 | Screw-CARR |
| 32 | 87-4960 | 1 | Clamp-Cable |
| 34 | 106-7833 | 1 | Spacer |
| 35 | 323-36 | 1 | Screw-HH |
| 36 | 66-6501 | 1 | Spacer-Wheel |
| 37 | 106-7835 | 1 | Spacer |

| Ref | Part No. | Qty. | Description |
|------|----------|------|--------------------------|
| 38 | 3220-1 | 2 | Nut-Jam |
| 39 | 87-7160 | 1 | Cable Clevis ASM |
| 39:1 | 87-2310 | 1 | Clevis-Cable |
| 39:2 | 32148-15 | 1 | Nut-Insert |
| 41 | 3218-18 | 1 | Nut-Jam |
| 43 | 87-5030 | 1 | Lever-Lock, Differential |
| 44 | 106-7952 | 1 | Knob |
| 45 | 87-4460 | 1 | Cable-Lock, Differential |
| 46 | 32120-47 | 3 | Ring-Retaining, External |
| 47 | 3296-56 | 2 | Nut-Lock, NI |
| 48 | 114402 | 2 | Spacer |
| 49 | 3256-23 | 1 | Washer-Flat |
| 50 | 87-3480 | 1 | Bracket-Equalizer, Cable |
| 51 | 94-3829 | 1 | Pin-Clevis |
| 52 | 106-6691 | 2 | Cable-Brake, Park |
| 53 | 321-9 | 2 | Screw-HH |
| 54 | 3290-221 | 4 | Washer-Spring |
| 55 | 104-6842 | 1 | Lever-Brake, Park |
| 55:1 | 106-7972 | 1 | Grip-Handle |
| 56 | 106-7814 | 2 | Bellcrank |
| 57 | 33096-00 | 2 | Washer-Flat |
| 58 | 106-7960 | 1 | HYD Lever ASM |
| 59 | 106-7957 | 1 | Rod-Link |
| 60 | 3290-307 | 2 | Pin-Hair |



Shift Assembly No. 106-7887

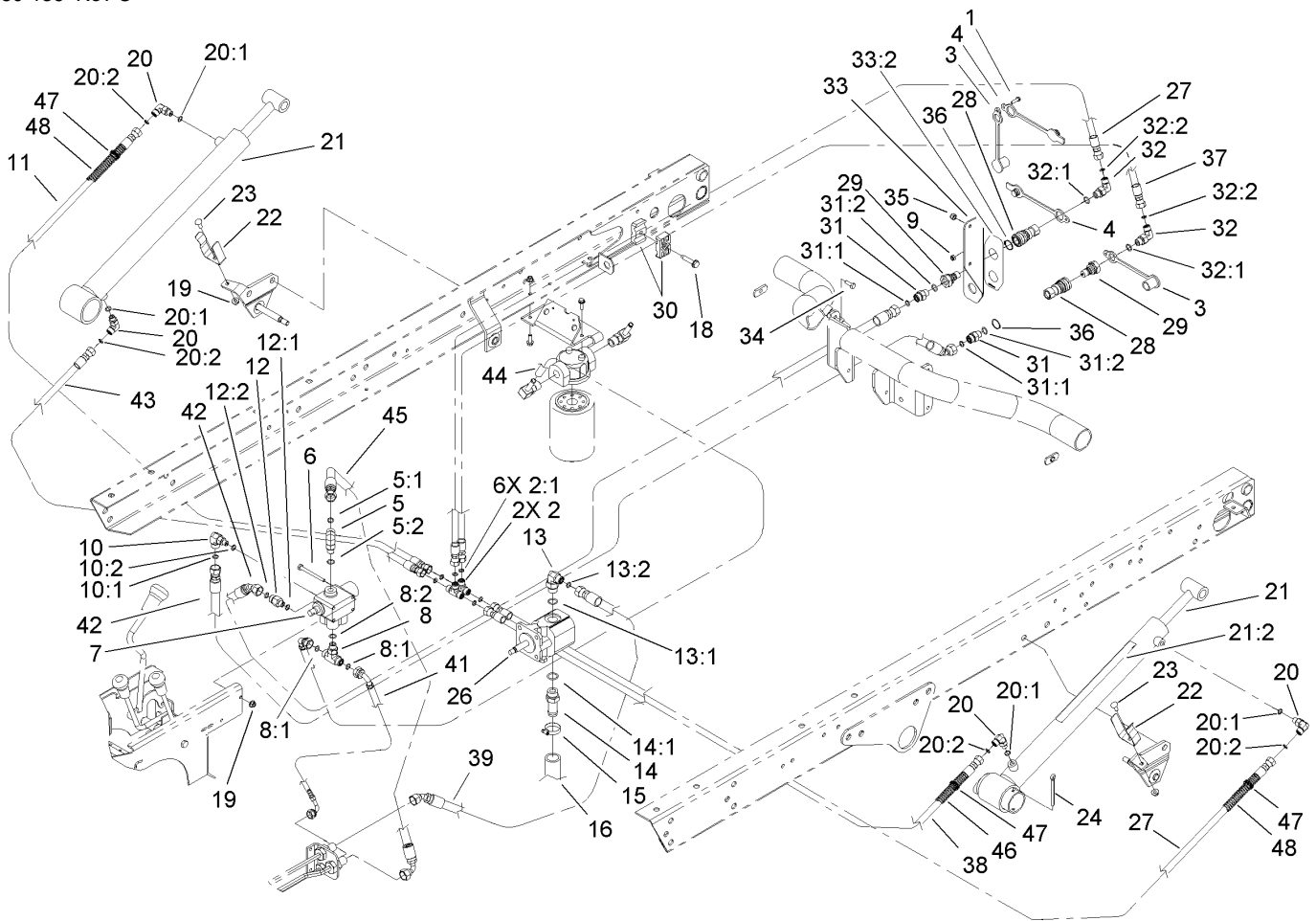
| Ref | Part No. | Qty. | Description |
|-----|----------|------|--------------------|
| 1 | 87-2040 | 1 | Shift Lever ASM |
| 2 | 87-3650 | 1 | Pin-Shift |
| 3 | 87-3540 | 2 | Link-Shift |
| 4 | 87-2520 | 1 | Tube-Pivot |
| 5 | 87-2900 | 1 | Spring-Compression |
| 6 | 87-8640 | 1 | Washer-Flat |
| 7 | 322-12 | 1 | Screw-HH |
| 8 | 87-3530 | 1 | Button-Shifter |
| 9 | 87-3660 | 1 | Spring-Compression |
| 10 | 3290-507 | 1 | Pin-Dowel |
| 11 | 87-3520 | 1 | Clevis |
| 12 | 32121-48 | 1 | Pin-Spring |
| 13 | 87-6040 | 1 | Bracket-Shifter |
| 14 | 3290-456 | 2 | Washer-Belleville |
| 15 | 3296-58 | 1 | Nut-Lock, NI |



Front Suspension Assembly

| Ref | Part No. | Qty. | Description |
|------|-------------|------|------------------------|
| 1 | 324-10 | 4 | Screw-HH |
| 2 | 87-5330 | 12 | Washer |
| 3 | 87-3600 | 10 | Spacer-Absorber, Shock |
| 4 | 87-3920 | 24 | Bushing |
| 5 | 87-3860-03 | 2 | Anti-Sway Bar Link ASM |
| 6 | 323-12 | 8 | Screw-HH |
| 7 | 33-3090 | 4 | Bushing |
| 8 | 302-11 | 2 | Fitting-Lube, 45 DEG |
| 9 | 87-0150-03 | 1 | Tower-Control Arm, RH |
| 10 | 324-13 | 2 | Screw-HH |
| 11 | 325-13 | 2 | Screw-HH |
| 12 | 87-2500 | 2 | Sleeve-Spring, Pivot |
| 13 | 105-7958 | 2 | Spring Cradle ASM |
| 13:2 | 93-9879 | 1 | Decal-Warning |
| 14 | 3296-23 | 4 | Nut-Lock, NI |
| 15 | 3296-48 | 10 | Nut-Lock, NI |
| 16 | 3290-357 | 4 | Nut-HHF, Whiz |
| 17 | 87-3910 | 2 | Bushing-Rubber |
| 18 | 87-4010-03 | 2 | Clamp-Bar, Sway |
| 19 | 3231-25 | 4 | Screw-CARR |
| 20 | 87-3890-03 | 2 | Bracket-Bar, Sway |
| 21 | 87-3850-03 | 1 | Bar-Sway, Anti |
| 22 | 105-4183-01 | 2 | Spring-Compression |
| 23 | 324-9 | 4 | Screw-HH |

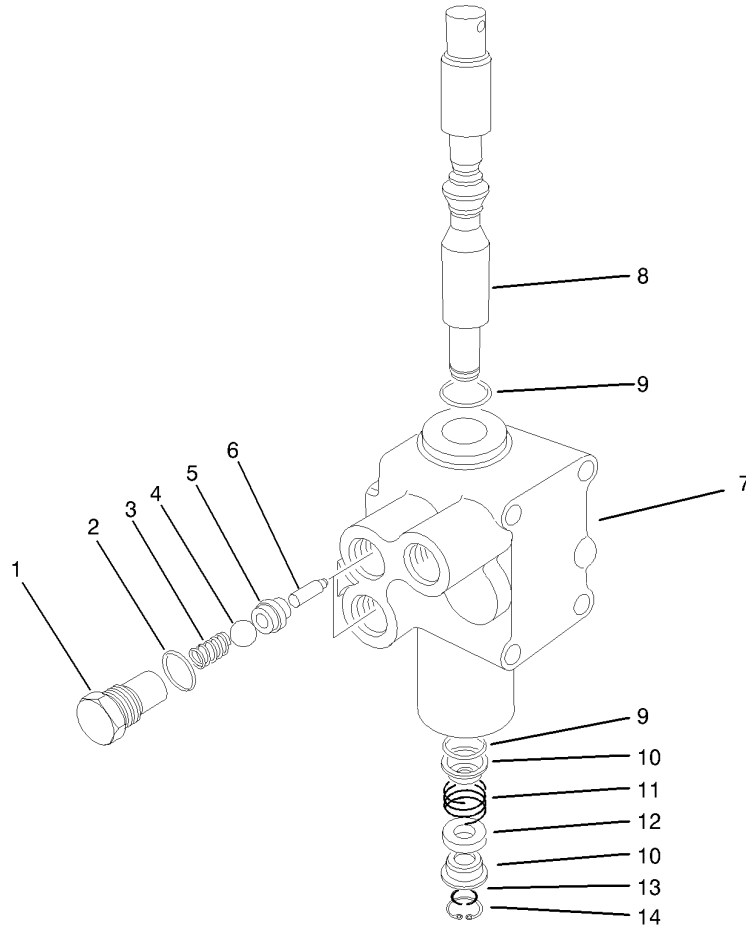
| Ref | Part No. | Qty. | Description |
|-----|-------------|------|-----------------------|
| 24 | 106-2302-03 | 2 | Stabilizer Link ASM |
| 25 | 3296-39 | 8 | Nut-Lock, NI |
| 26 | 87-3110 | 2 | Absorber-Shock |
| 27 | 3256-27 | 2 | Washer-Flat |
| 28 | 3256-6 | 2 | Washer-Flat |
| 29 | 87-0160-03 | 1 | Tower-Control Arm, LH |



Lift Valve and Hydraulic Assembly

| Ref | Part No. | Qty. | Description |
|------|----------|------|---------------------|
| 1 | 32105-13 | 1 | Screw-SHH |
| 2 | 340-21 | 2 | Fitting |
| 2:1 | 237-21 | 3 | O-Ring |
| 3 | 106-7881 | 2 | Cap-Dust, HYD |
| 4 | 106-7882 | 2 | Plug-Dust, HYD |
| 5 | 340-77 | 1 | Fitting-HYD, 90 DEG |
| 5:1 | 237-22 | 1 | O-Ring |
| 5:2 | 237-42 | 1 | O-Ring |
| 6 | 321-14 | 2 | Screw-HH |
| 7 | 43-1950 | 1 | Valve-Control, HYD |
| 8 | 340-94 | 1 | Adapter |
| 8:1 | 237-22 | 2 | O-Ring |
| 8:2 | 237-42 | 1 | O-Ring |
| 9 | 3296-2 | 1 | Nut-Lock |
| 10 | 340-97 | 1 | Fitting-HYD, 90 DEG |
| 10:1 | 237-22 | 1 | O-Ring |
| 10:2 | 237-78 | 1 | O-Ring |
| 11 | 92-7564 | 1 | Hose ASM |
| 12 | 340-88 | 1 | Adapter |
| 12:1 | 237-22 | 1 | O-Ring |
| 12:2 | 237-78 | 1 | O-Ring |
| 13 | 340-18 | 1 | Fitting-HYD, 90 DEG |
| 13:1 | 237-79 | 1 | O-Ring |
| 13:2 | 237-22 | 1 | O-Ring |

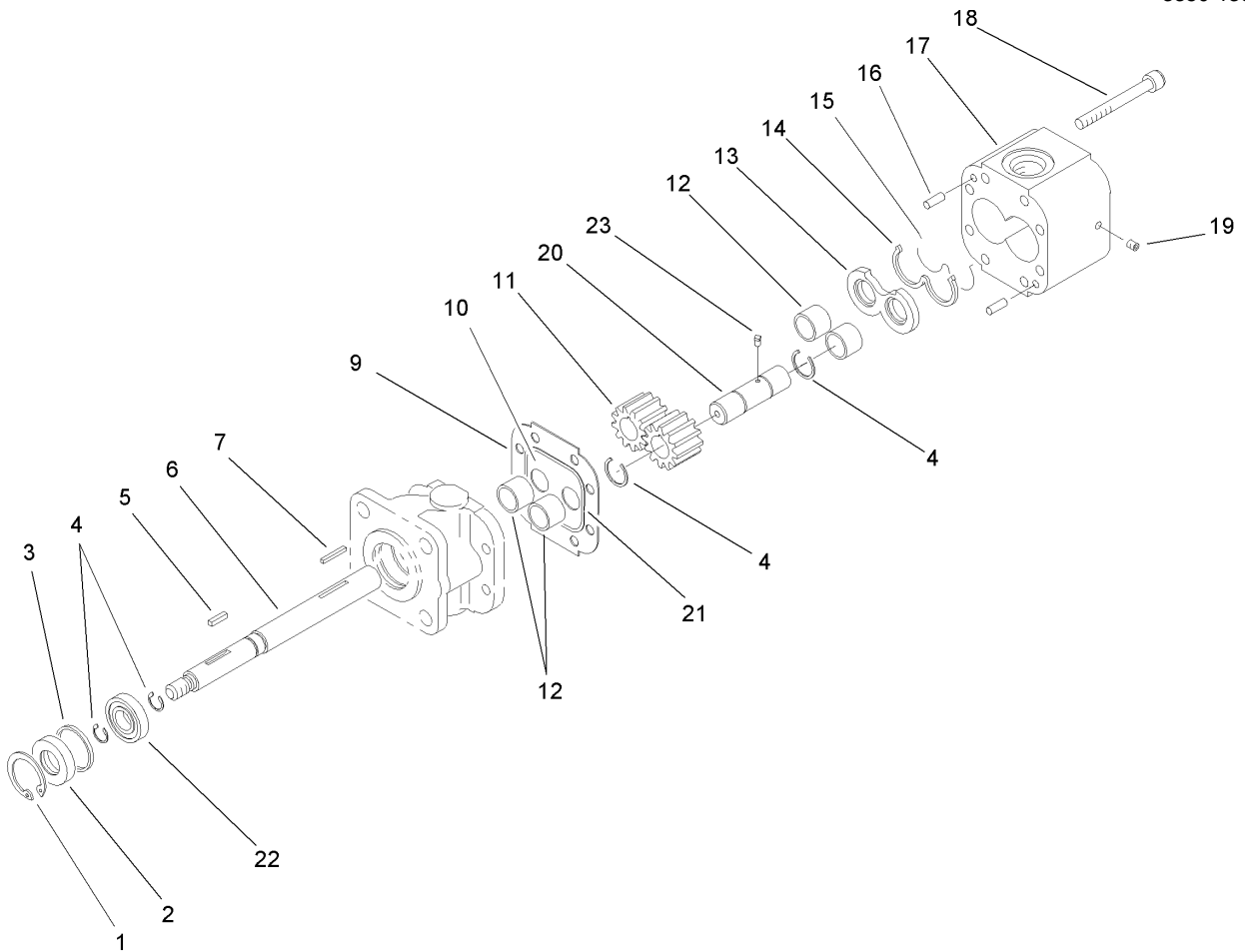
| Ref | Part No. | Qty. | Description |
|--------|----------|------|-----------------------|
| 14 | 354-136 | 1 | Fitting-HYD |
| 14:1 | 237-80 | 1 | O-Ring |
| 15 | 2412-34 | 1 | Clamp-Hose |
| 16 | 87-3670 | 1 | Hose-Suction |
| 18 | 32144-57 | 1 | Screw |
| 19 | 32128-33 | 4 | Nut-HF |
| 20 | 340-132 | 4 | Fitting-HYD, 90 DEG |
| 20:1 | 237-78 | 1 | O-Ring |
| 20:2 | 237-21 | 1 | O-Ring |
| 21 | 106-7939 | 2 | HYD Cylinder ASM |
| 21:1:1 | 106-7941 | 1 | Seal Kit |
| 21:2 | 93-9852 | 1 | Decal-Warning |
| 22 | 87-3720 | 2 | Retainer-Cylinder |
| 23 | 3229-1 | 2 | Screw-CARR |
| 24 | 3272-37 | 2 | Pin-Cotter |
| 26 | 106-6649 | 1 | Pump-Gear, HYD |
| 27 | 104-3716 | 2 | HYD Hose ASM |
| 28 | 106-7968 | 2 | Coupler-Quick, Female |
| 29 | 106-7969 | 2 | Coupler-Quick, Male |
| 30 | 56-7976 | 2 | Clamp-Tube |
| 31 | 340-2 | 2 | Fitting-Straight, HYD |
| 31:1 | 237-22 | 1 | O-Ring |
| 31:2 | 237-42 | 1 | O-Ring |
| 32 | 340-82 | 2 | Adapter |



Hydraulic Valve Assembly No. 43-1950

| Ref | Part No. | Qty. | Description |
|-----|----------|------|-------------|
| 1 | 22-8330 | 2 | Plug |
| 2 | 237-42 | 2 | O-Ring |
| 3 | 22-8340 | 2 | Spring |
| 4 | 22-8350 | 2 | Ball |
| 5 | 22-8370 | 2 | Seat-Valve |
| 6 | 22-8360 | 2 | Pin |
| 7 | | 1 | Body |
| 8 | 22-8420 | 1 | Spool |
| 9 | 22-8500 | 2 | O-Ring |
| 10 | 22-8380 | 2 | Retainer |
| 11 | 22-8410 | 1 | Spring |
| 12 | 23-3030 | 1 | Spacer |
| 13 | 22-8480 | 1 | Ring-Snap |
| 14 | 22-8490 | 1 | Ring-Snap |

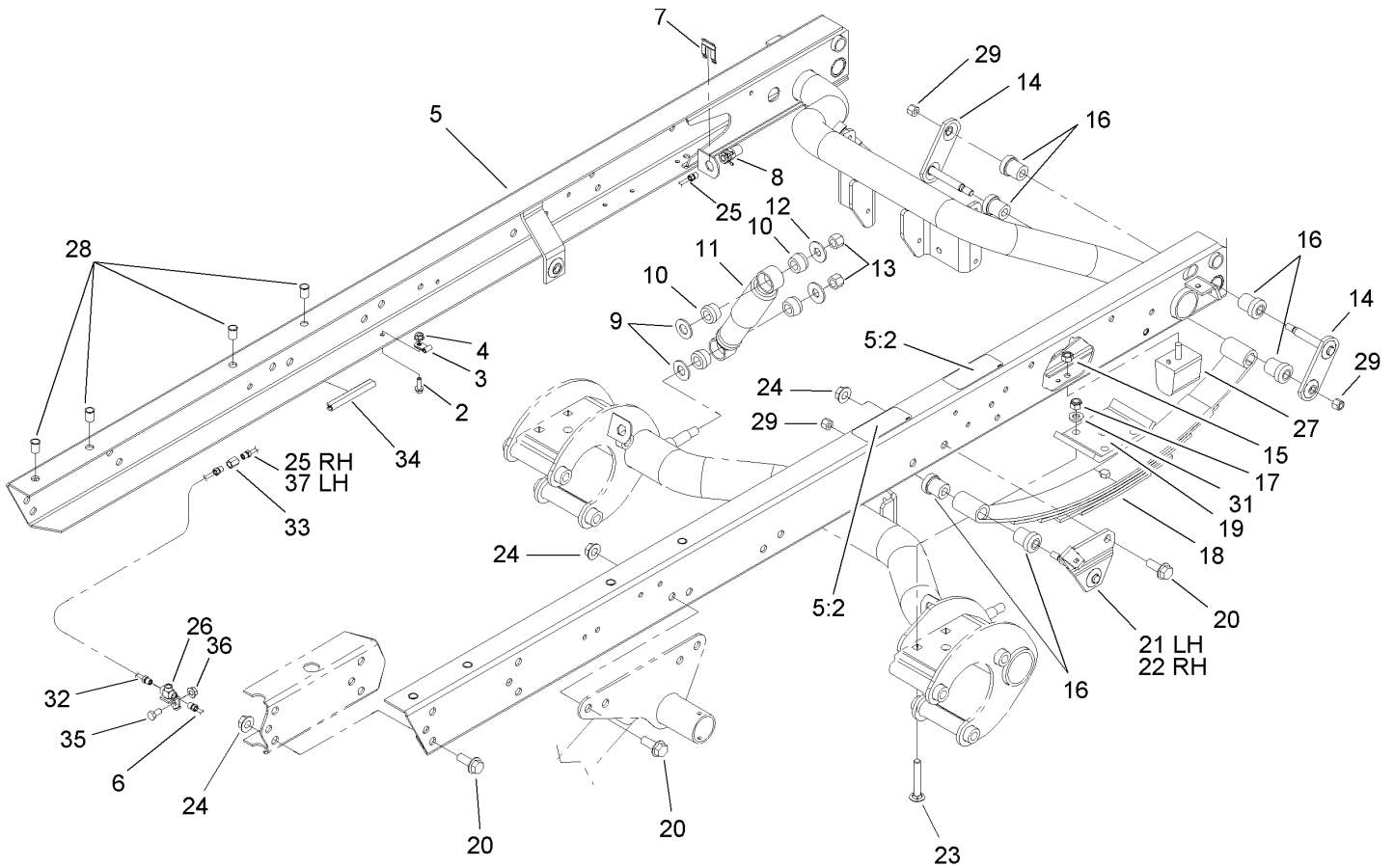
| | | | |
|--|--|--|--|
| | | | |
|--|--|--|--|



Hydraulic Pump Assembly No. 106-6649

| Ref | Part No. | Qty. | Description |
|-----|----------|------|------------------------------|
| 1 | 32151-41 | 1 | Ring-Snap |
| 2 | 92-2195 | 1 | Seal-Oil |
| 3 | 92-2186 | 1 | Spacer |
| 4 | 92-2178 | 4 | Ring-Crescent |
| 5 | 92-2179 | 1 | Key-Square |
| 6 | 92-2189 | 1 | Shaft-Drive |
| 7 | 92-2177 | 1 | Pin-Shear |
| 9 | 92-2182 | 1 | Plate-Seal |
| 10 | 92-2183 | 1 | Plate-Wear |
| 11 | 92-2175 | 2 | Gear |
| 12 | 92-2192 | 4 | Bearing |
| 13 | 92-2181 | 1 | Plate-Pressure |
| 14 | 92-2197 | 1 | Seal-Back Up, Pressure Plate |
| 15 | 92-2196 | 1 | Seal-Plate, Pressure |
| 16 | 92-2176 | 2 | Pin-Shear |
| 17 | 92-2187 | 1 | Housing-Gear, End |
| 18 | 92-2173 | 4 | Screw |
| 19 | 92-2185 | 1 | Plug |
| 20 | 92-2190 | 1 | Shaft-Idler |
| 21 | 92-2198 | 1 | Seal-Plate, Wear |
| 22 | 92-2191 | 1 | Bearing-Ball |
| 23 | 92-2199 | 1 | Key-Ball |

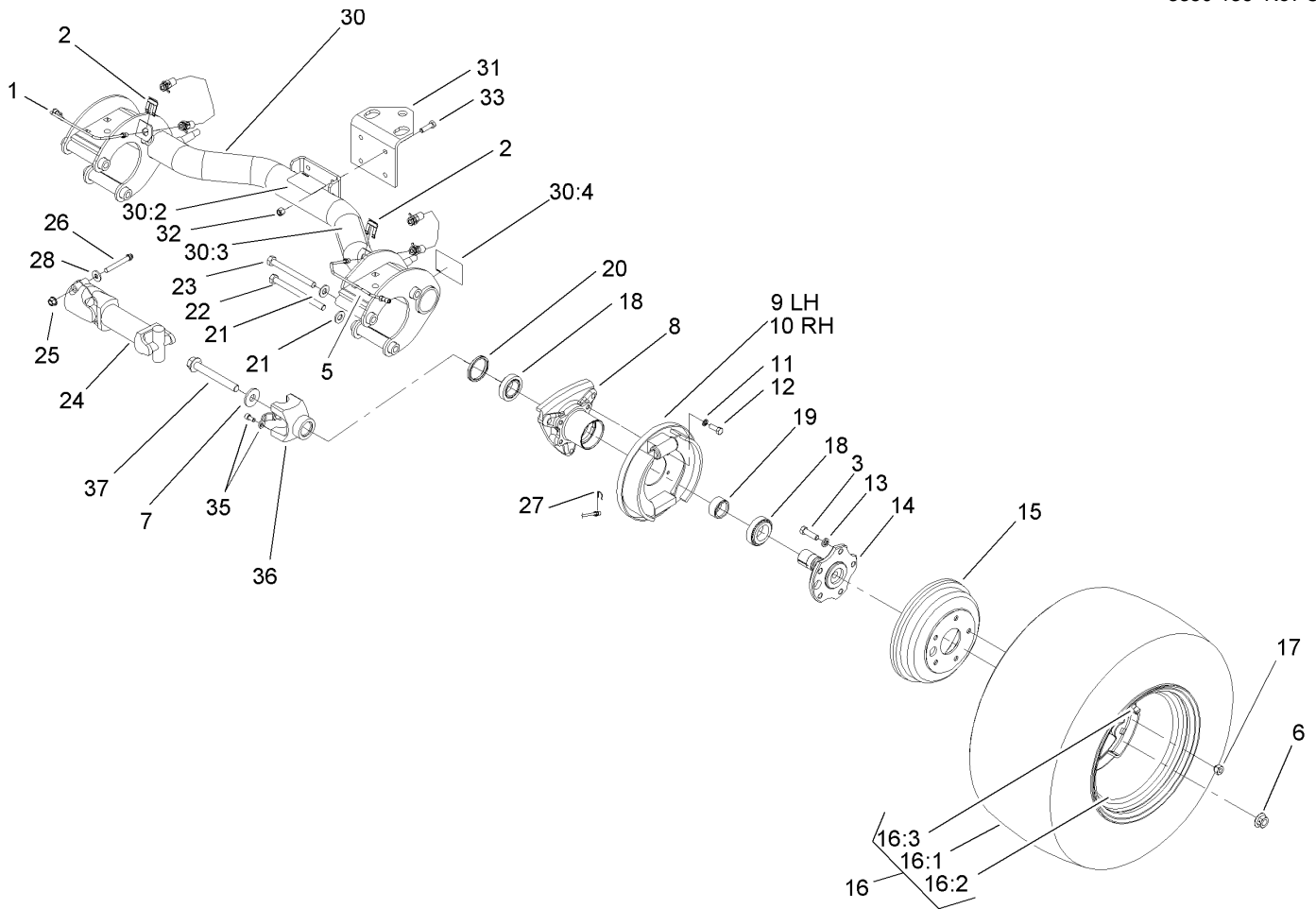
| | | | |
|--|--|--|--|
| | | | |
|--|--|--|--|



Rear Frame Assembly

| Ref | Part No. | Qty. | Description |
|-----|------------|------|------------------------|
| 2 | 3234-4 | 4 | Screw-HHF |
| 3 | 2412-149 | 4 | Clamp-Hose |
| 4 | 32128-33 | 4 | Nut-HF |
| 5 | 105-7959 | 1 | Frame Channel ASM |
| 5:2 | 93-8071 | 2 | Decal-Surface, Hot |
| 6 | 94-3843 | 1 | LH Rear Brake Tube ASM |
| 7 | 87-3580 | 2 | Clip-Retainer |
| 8 | 87-4100 | 2 | Hose-Brake, Rear |
| 9 | 3256-27 | 4 | Washer-Flat |
| 10 | 87-3920 | 8 | Bushing |
| 11 | 87-3110 | 2 | Absorber-Shock |
| 12 | 3256-6 | 4 | Washer-Flat |
| 13 | 3296-23 | 4 | Nut-Lock, NI |
| 14 | 87-3980 | 4 | Shackle ASM |
| 15 | 48-9520 | 2 | Nut |
| 16 | 87-4760 | 12 | Bushing-Rubber |
| 17 | 3296-76 | 8 | Nut-Lock, NI |
| 18 | 87-1490 | 2 | Spring-Leaf, Rear |
| 19 | 87-7470-03 | 2 | Plate-Spring, Clamp |
| 20 | 3234-38 | 24 | Screw-HHF |
| 21 | 87-3960 | 1 | LH Spring Mount ASM |
| 22 | 87-3940 | 1 | RH Spring Mount ASM |
| 23 | 3232-17 | 8 | Screw-CARR |
| 24 | 32128-23 | 24 | Nut-HF |

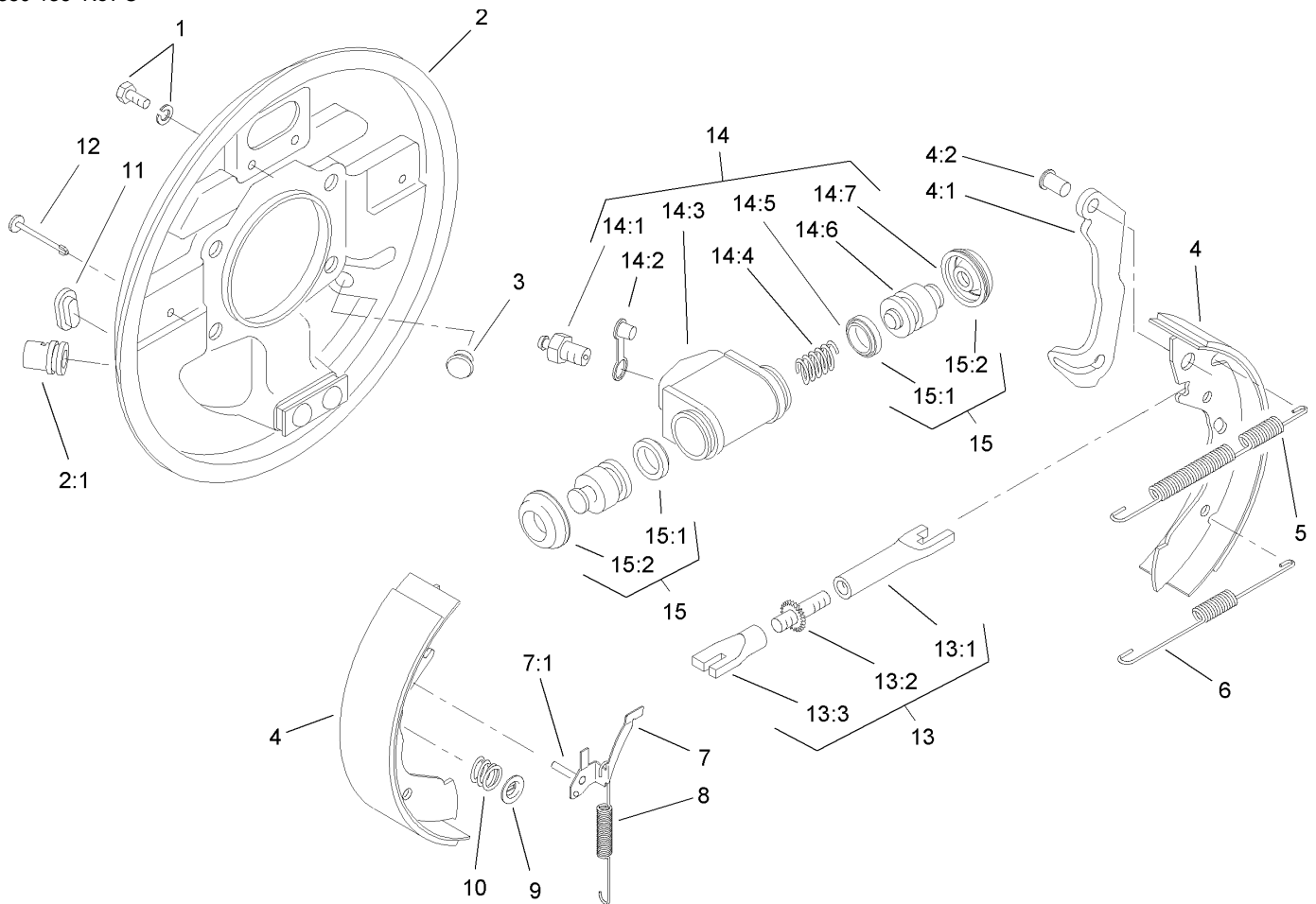
| Ref | Part No. | Qty. | Description |
|-----|----------|------|------------------------|
| 25 | 94-3846 | 1 | RH Rear Brake Tube ASM |
| 26 | 87-3560 | 1 | Tee |
| 27 | 87-3470 | 2 | Bumper-Axle, Rear |
| 28 | 32148-9 | 8 | Insert-Nut |
| 29 | 3296-39 | 6 | Nut-Lock, NI |
| 31 | 87-7480 | 8 | Washer |
| 32 | 94-3845 | 1 | RH Rear Brake Tube ASM |
| 33 | 87-3570 | 2 | Union |
| 34 | 43-4300 | 1 | Trim-Frame, Rear |
| 35 | 322-2 | 1 | Screw-HH |
| 36 | 32128-20 | 1 | Nut-HF |
| 37 | 94-3844 | 1 | LH Rear Brake Tube ASM |



Rear Axle Assembly

| Ref | Part No. | Qty. | Description |
|------|-------------|------|------------------------|
| 1 | 87-4090 | 1 | RH Rear Brake Tube ASM |
| 2 | 87-3580 | 2 | Clip-Retainer |
| 3 | 87-2080 | 10 | Bolt-Hex, TAP |
| 5 | 87-4080 | 1 | LH Rear Brake Tube ASM |
| 6 | 105-1764 | 2 | Nut-Flange, Side Lock |
| 7 | 104-9216 | 2 | Washer-Hardened |
| 8 | 87-2240 | 2 | Housing-Axle |
| 9 | 93-7126 | 1 | LH Rear Brake ASM |
| 10 | 93-7125 | 1 | RH Rear Brake ASM |
| 11 | 3253-21 | 8 | Washer-Lock |
| 12 | 323-6 | 8 | Screw-HH |
| 13 | 3253-6 | 10 | Washer-Lock |
| 14 | 105-1717-03 | 2 | Axle-Stub |
| 15 | 93-7128 | 2 | Drum-Brake |
| 16 | | 2 | Tire And Wheel ASM |
| 16:1 | 106-7868 | 1 | Tire |
| 16:2 | 87-6750 | 1 | Wheel |
| 16:3 | 232-27 | 1 | Stem-Valve |
| 17 | 23-7270 | 10 | Nut-Wheel |
| 18 | 87-1970 | 2 | Bearing |
| 19 | 87-4060 | 2 | Spacer-Bearing, Wheel |
| 20 | 87-3590 | 2 | Seal-Bearing |
| 21 | 87-7270 | 6 | Washer-Thrust |
| 22 | 325-20 | 5 | Screw-HH |

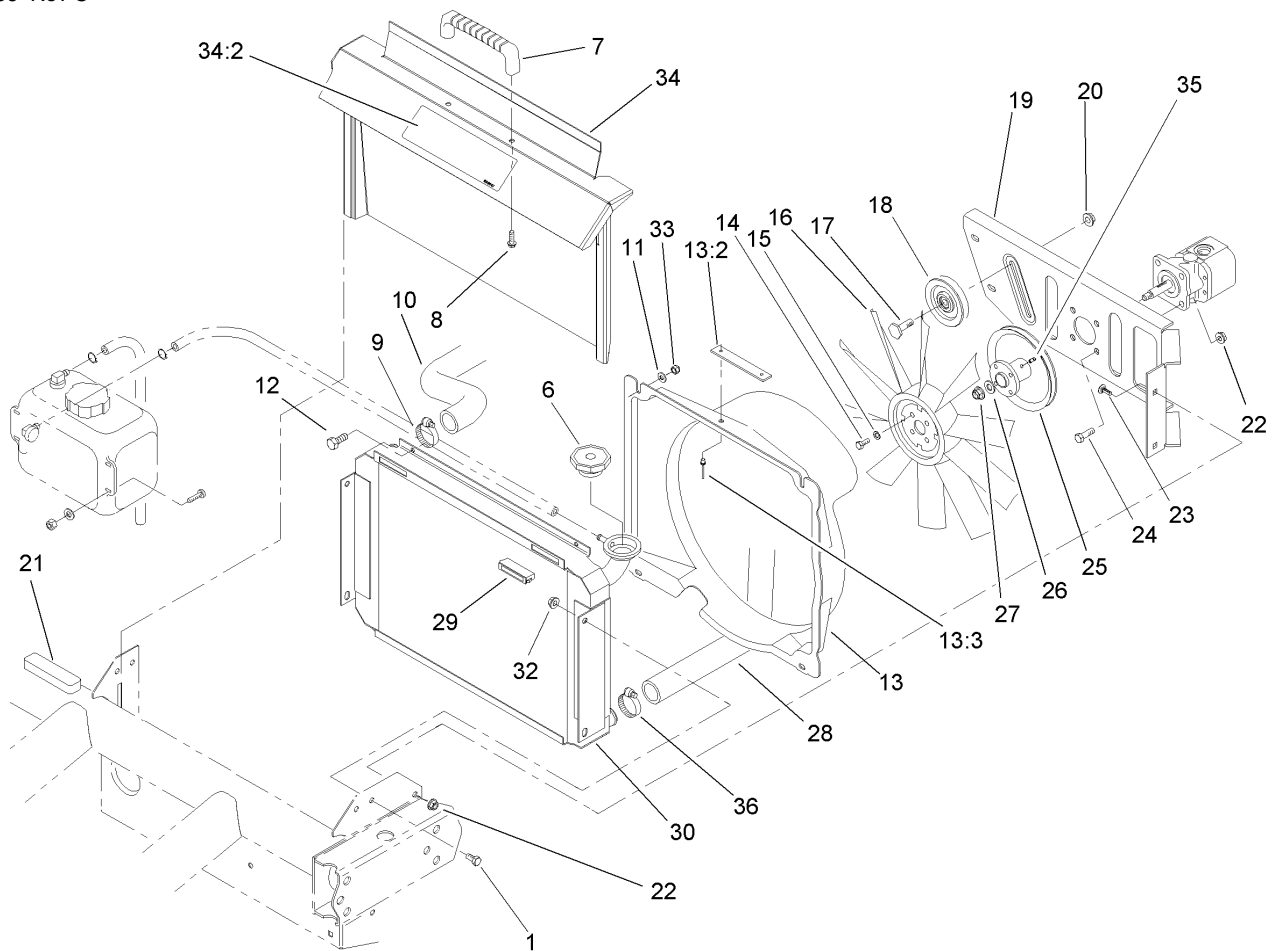
| Ref | Part No. | Qty. | Description |
|------|------------|------|-------------------|
| 23 | 325-19 | 1 | Screw-HH |
| 24 | 98-2918 | 2 | Driveshaft ASM |
| 25 | 32128-36 | 4 | Nut-HF |
| 26 | 98-2939 | 4 | Screw-Cap |
| 27 | 87-3310 | 2 | Clip-Cable, Brake |
| 28 | 80-6990 | 4 | Washer-Hardened |
| 30 | 105-7961 | 1 | Rear Axle ASM |
| 30:2 | 93-9442 | 1 | Decal-Atf |
| 30:3 | 93-9862 | 1 | Decal-Danger |
| 30:4 | 93-9449 | 2 | Decal-Driveshaft |
| 31 | 92-5951-03 | 1 | Angle-Hitch |
| 32 | 3296-39 | 4 | Nut-Lock, NI |
| 33 | 323-7 | 4 | Screw-HH |
| 35 | 92-4189 | 2 | Strap Kit |
| 36 | 92-4190 | 2 | Yoke |
| 37 | 105-1763 | 2 | Screw-HHF |



Rear Brake Assembly No. 93-7125 (Right) and 93-7126 (Left)

| Ref | Part No. | Qty. | Description |
|------|----------|------|---------------------------------|
| 1 | 92-4135 | 2 | Bolt-Set |
| 2 | 92-4100 | 1 | RH Backplate ASM |
| 2 | 92-4136 | 1 | LH Backplate ASM |
| 2:1 | | 1 | Guide-Pipe |
| 3 | 92-4146 | 1 | Plunger ASM |
| 4 | 92-4143 | 1 | Lined Shoe Kit |
| 4:1 | | 1 | Lever-Operating |
| 4:2 | | 1 | Pin |
| 5 | 92-4147 | 1 | Spring-Return, Shoe (Upper, LH) |
| 5 | 92-4148 | 1 | Spring-Return, Shoe (Upper, RH) |
| 6 | 92-4149 | 1 | Spring-Return, Shoe (Lower) |
| 7 | 92-4124 | 1 | RH Pawl Lever ASM |
| 7 | 92-4123 | 1 | LH Pawl Lever ASM |
| 7:1 | | 1 | Pin-Pawl |
| 8 | 92-4150 | 1 | Spring-Adjuster, LH |
| 8 | 92-4151 | 1 | Spring-Adjuster, RH |
| 9 | 92-4131 | 2 | Washer-Hold Down, Shoe |
| 10 | 92-4152 | 2 | Spring-Hold Down, Shoe |
| 11 | 92-4134 | 1 | Plug-Inspection |
| 12 | 92-4133 | 2 | Pin-Hold Down, Shoe |
| 13 | 92-4145 | 1 | RH Adjustor ASM |
| 13 | 92-4144 | 1 | LH Adjustor ASM |
| 13:1 | | 1 | Pushrod-Female |
| 13:2 | | 1 | Bolt-Adjuster |

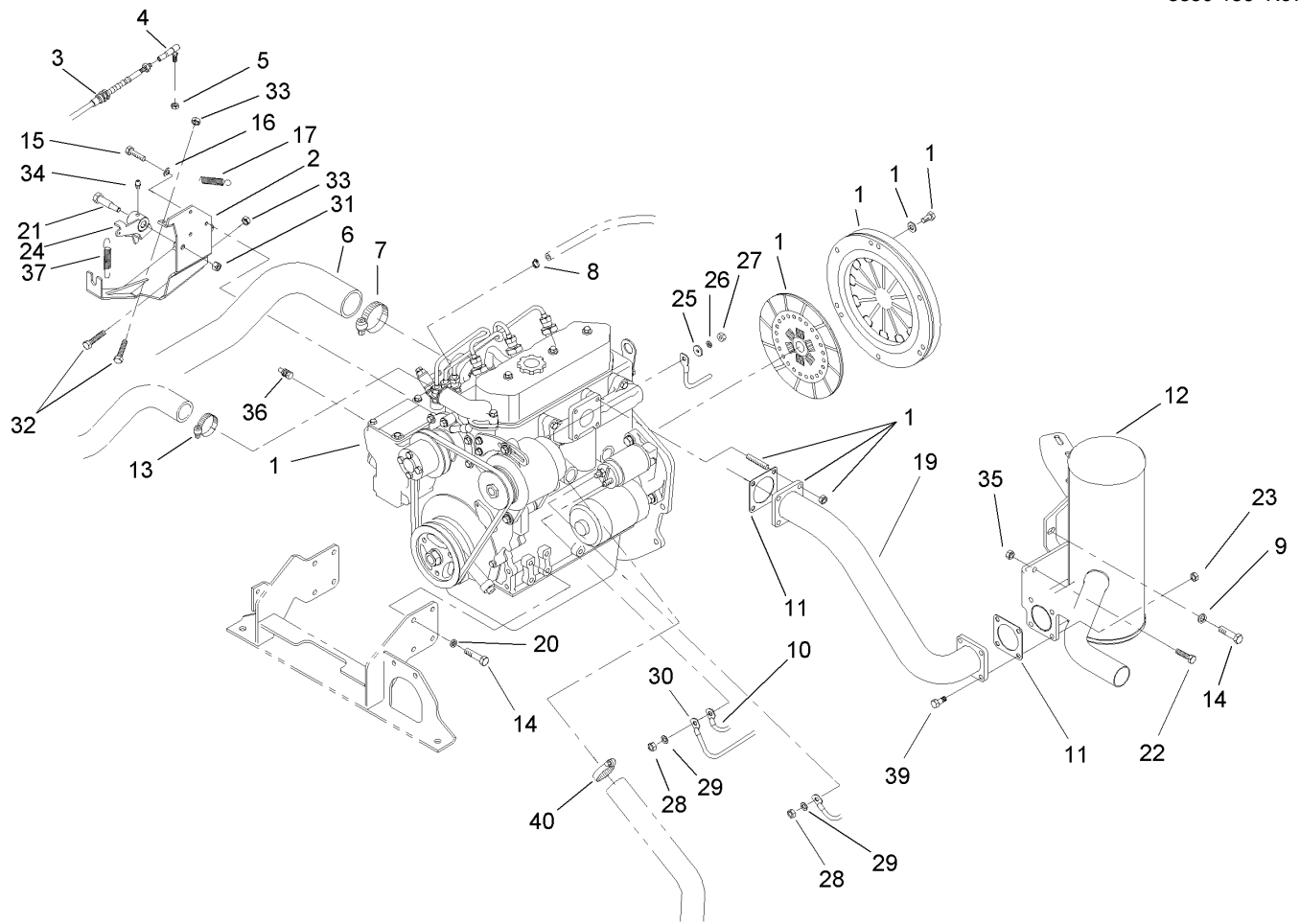
| Ref | Part No. | Qty. | Description |
|------|----------|------|-----------------------|
| 13:3 | | 1 | Sleeve-Adjuster |
| 14 | 92-4141 | 1 | RH Wheel Cylinder ASM |
| 14 | 92-4140 | 1 | LH Wheel Cylinder ASM |
| 14:1 | 92-4137 | 1 | Screw-Bleed |
| 14:2 | 92-4114 | 1 | Cap-Screw, Bleed |
| 14:3 | | 1 | Body |
| 14:4 | | 1 | Spring |
| 14:5 | | 2 | Seal-L Type |
| 14:6 | | 2 | Piston |
| 14:7 | | 2 | Cover-Dust |
| 15 | 92-4142 | 1 | Seal Kit |
| 15:1 | | 2 | Seal-L Type |
| 15:2 | | 2 | Cover-Dust |



Radiator and Hydraulic Pump Assembly

| Ref | Part No. | Qty. | Description |
|------|------------|------|----------------------|
| 1 | 322-2 | 4 | Screw-HH |
| 6 | 66-3240 | 1 | Cap-Radiator |
| 7 | 65-5100 | 1 | Handle-Door |
| 8 | 46-8091 | 2 | Screw-HWH |
| 9 | 2412-34 | 1 | Clamp-Hose |
| 10 | 105-1724 | 1 | Hose-Radiator, Upper |
| 11 | 3256-22 | 4 | Washer-Flat |
| 12 | 321-4 | 4 | Screw-HH |
| 13 | 105-7956 | 1 | Fan Shroud ASM |
| 13:2 | 98-9335 | 1 | Plate-Warning, Fan |
| 13:3 | 3290-271 | 2 | Rivet-Pop |
| 14 | 321-3 | 4 | Screw-HH |
| 15 | 3253-3 | 4 | Washer-Lock |
| 16 | 84-1880 | 1 | Fan |
| 17 | 32141-86 | 1 | Screw-Leveler |
| 18 | 63-8140 | 1 | Pulley-Idler |
| 19 | 93-7088-03 | 1 | Plate-Mount, Pump |
| 20 | 3290-357 | 1 | Nut-HHF, Whiz |
| 21 | 87-9810 | 1 | Foam-Overflow, Tank |
| 22 | 3296-29 | 8 | Nut-Lock, NI |
| 23 | 3230-23 | 4 | Screw-CARR |
| 24 | 322-5 | 4 | Screw-HH |
| 25 | 94-5237 | 1 | Fan Hub ASM |
| 26 | 3256-45 | 1 | Washer-Flat |

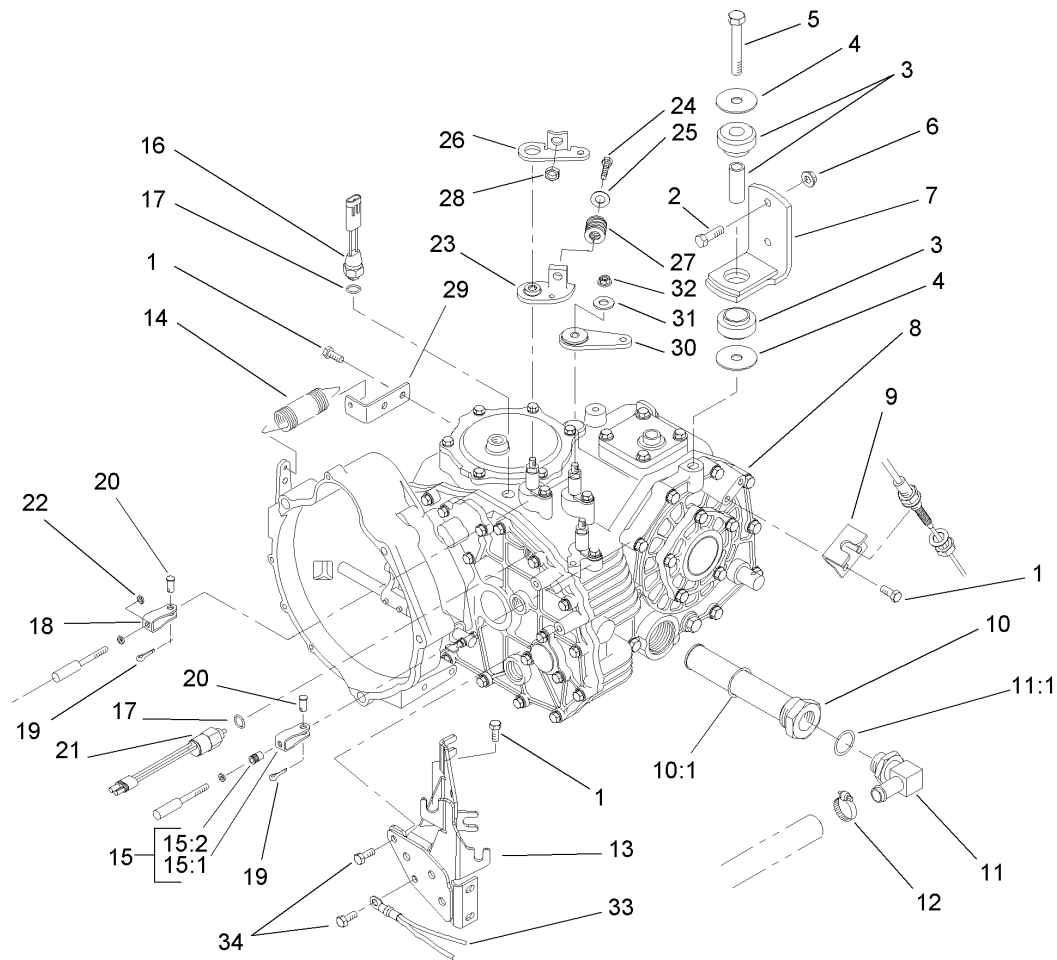
| Ref | Part No. | Qty. | Description |
|------|----------|------|----------------------|
| 27 | 3296-5 | 1 | Nut-Lock |
| 28 | 105-1725 | 1 | Hose-Radiator, Lower |
| 29 | 58-4250 | 2 | Catch-Magnetic |
| 30 | 93-7051 | 1 | Radiator |
| 32 | 32128-20 | 4 | Nut-HF |
| 33 | 3296-42 | 4 | Nut-Lock, NI |
| 34 | 105-4223 | 1 | Radiator Cover ASM |
| 34:2 | 93-9447 | 1 | Decal-Caution |
| 35 | 3245-31 | 1 | Screw-HSH |
| 36 | 2412-3 | 1 | Clamp-Hose |



Engine Assembly

| Ref | Part No. | Qty. | Description |
|-----|-------------|------|----------------------------|
| 1 | 104-9218 | 1 | Engine ASM |
| 2 | 106-2445-03 | 1 | Throttle Bracket ASM |
| 3 | 106-2420 | 1 | Cable-Accelerator |
| 4 | 18-1720 | 1 | Governor Ball Joint ASM |
| 5 | 3296-3 | 1 | Nut-Lock |
| 6 | 107-7961 | 1 | Hose-Intake |
| 7 | 2412-92 | 1 | Clamp-Hose |
| 8 | 2412-108 | 1 | Clamp-Worm |
| 9 | 87-8640 | 1 | Washer-Flat |
| 10 | 99-3441 | 1 | Harness-Wire, Fusible Link |
| 11 | 105-4209 | 2 | Gasket-Muffler |
| 12 | 105-1778 | 1 | Muffler-Exhaust |
| 13 | 2412-34 | 1 | Clamp-Hose |
| 14 | 33114-020 | 9 | Screw-HH |
| 15 | 33103-016 | 3 | Screw-HHF |
| 16 | 3253-3 | 3 | Washer-Lock |
| 17 | 87-4020 | 1 | Spring-Extension |
| 19 | 105-4186 | 1 | Exhaust Tube ASM |
| 20 | 3253-4 | 8 | Washer-Lock |
| 21 | 7-0030 | 1 | Bolt-Shoulder |
| 22 | 322-5 | 2 | Screw-HH |
| 23 | 32128-25 | 4 | Nut-HF |
| 24 | 106-7949 | 1 | Bellcrank ASM |
| 25 | 3256-2 | 1 | Washer-Flat |

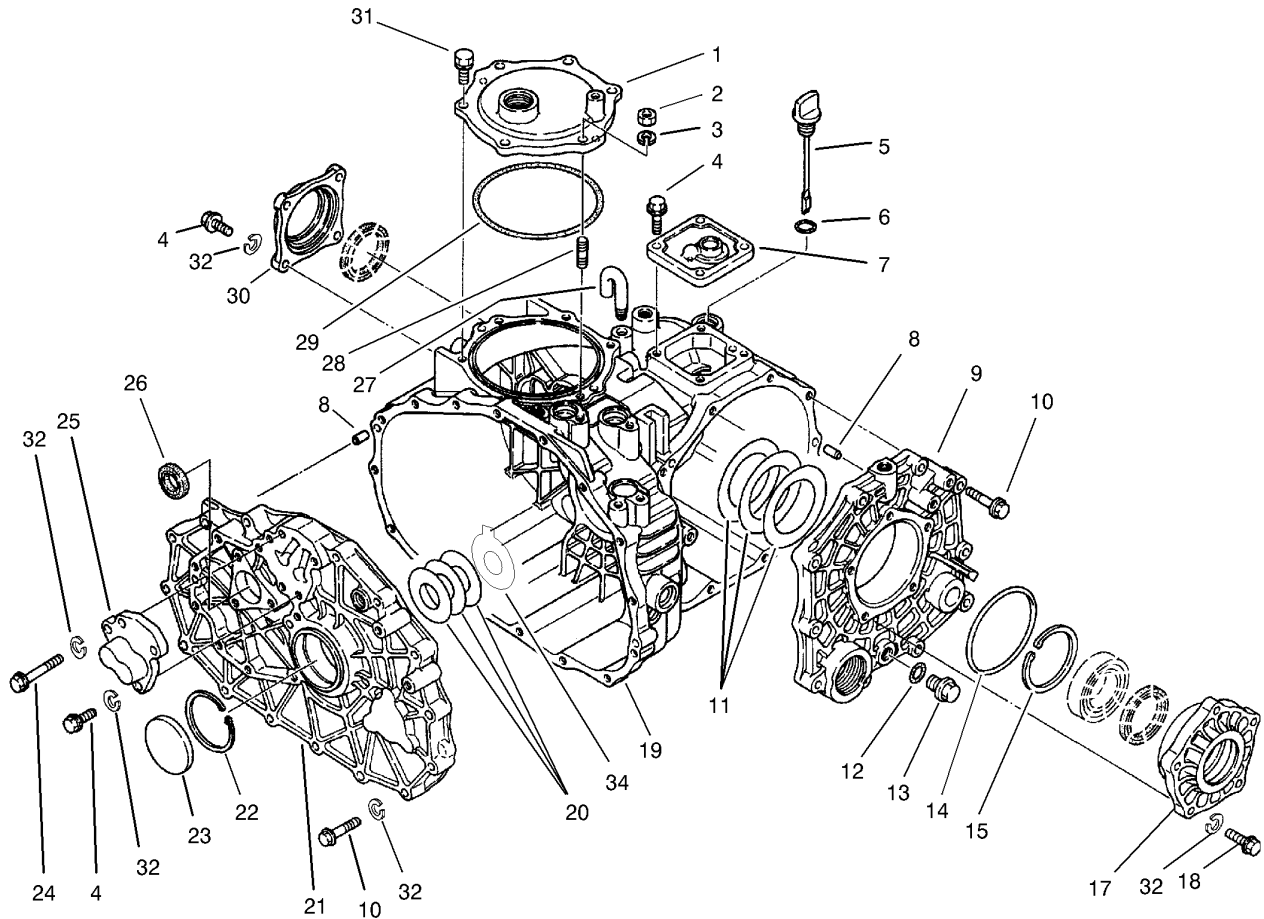
| Ref | Part No. | Qty. | Description |
|-----|----------|------|-------------------------|
| 26 | 43-5920 | 1 | Washer-Lock, Spring |
| 27 | 48-7880 | 1 | Nut-Hex |
| 28 | 33014-00 | 2 | Nut-Hex |
| 29 | 3254-2 | 2 | Washer-Lock, Internal |
| 30 | 87-3070 | 1 | Cable-Battery, Positive |
| 31 | 3296-29 | 1 | Nut-Lock, NI |
| 32 | 321-8 | 2 | Screw-HH |
| 33 | 3218-1 | 2 | Nut-Jam |
| 34 | 302-5 | 1 | Fitting-Grease |
| 35 | 32128-20 | 2 | Nut-HF |
| 36 | 94-3457 | 1 | Sender-Temperature |
| 37 | 107-7958 | 1 | Spring-Governor |
| 39 | 3274-22 | 4 | Screw-HSH |
| 40 | 2412-3 | 1 | Clamp-Hose |



Transaxle Assembly

| Ref | Part No. | Qty. | Description |
|------|-------------|------|-----------------------------|
| 1 | 33114-020 | 5 | Screw-HH |
| 2 | 323-7 | 4 | Screw-HH |
| 3 | 106-7865 | 2 | Engine Mount ASM |
| 4 | 87-5100 | 4 | Washer-Snubbing |
| 5 | 33116-080 | 2 | Screw-HH |
| 6 | 3296-39 | 4 | Nut-Lock, NI |
| 7 | 87-5800-03 | 2 | Transaxle Mount ASM |
| 8 | 105-4180 | 1 | 2 Wheel Drive Transaxle ASM |
| 9 | 87-4470 | 1 | Bracket-Lock, Differential |
| 10 | 87-3990 | 1 | Strainer-Transaxle |
| 10:1 | 237-123 | 1 | O-Ring |
| 11 | 353-987 | 1 | Fitting-HYD, 90 DEG |
| 11:1 | 237-81 | 1 | O-Ring |
| 12 | 2412-34 | 1 | Clamp-Hose |
| 13 | 105-4207-03 | 1 | Cable Mount ASM |
| 14 | 68-9950 | 1 | Spring-Traction |
| 15 | 87-7160 | 1 | Cable Clevis ASM |
| 15:1 | 87-2310 | 1 | Clevis-Cable |
| 15:2 | 32148-15 | 1 | Nut-Insert |
| 16 | 72-4310 | 1 | Switch-Ball |
| 17 | 237-30 | 2 | O-Ring |
| 18 | 87-2310 | 2 | Clevis-Cable |
| 19 | 3272-6 | 3 | Pin-Cotter |
| 20 | 283-62 | 3 | Pin-Clevis |

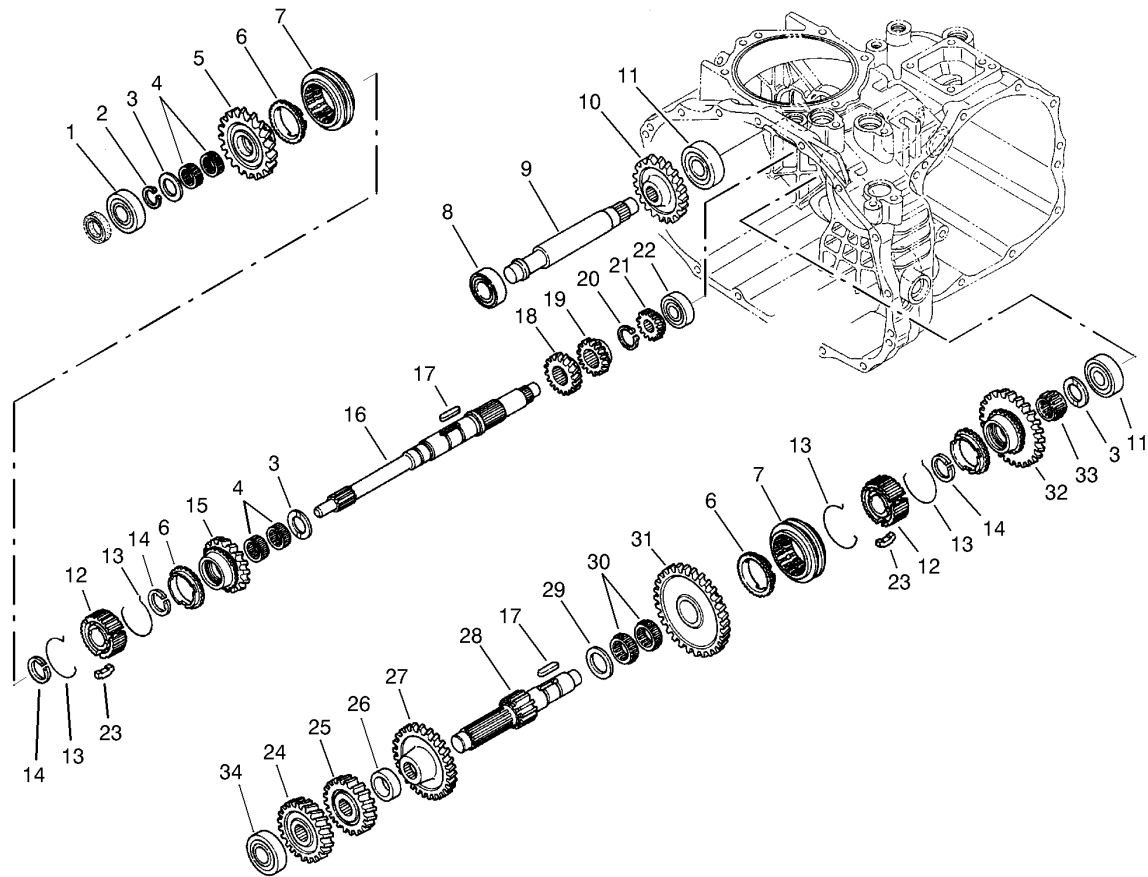
| Ref | Part No. | Qty. | Description |
|-----|-----------|------|-------------------------|
| 21 | 87-6710 | 1 | Switch-Transmission |
| 22 | 3220-1 | 2 | Nut-Jam |
| 23 | 87-7970 | 1 | Arm-Shift |
| 24 | 323-10 | 1 | Screw-HH |
| 25 | 3256-4 | 1 | Washer-Flat |
| 26 | 87-8250 | 1 | Plate-Arm, Shift |
| 27 | 87-6910 | 1 | Spring-Compression |
| 28 | 32128-21 | 1 | Nut-HF |
| 29 | 87-7170 | 1 | Bracket-Spring, Clutch |
| 30 | 87-7960 | 2 | Lever-Shift |
| 31 | 80-6990 | 3 | Washer-Hardened |
| 32 | 48-9520 | 3 | Nut |
| 33 | 87-3080 | 1 | Cable-Battery, Negative |
| 34 | 33114-025 | 2 | Screw-HH |



Case Assembly Transaxle Assembly No. 105-4180

| Ref | Part No. | Qty. | Description |
|-----|-----------|------|----------------------|
| 1 | 92-0656 | 1 | Cover-Upper, PTO |
| 2 | 48-7930 | 1 | Nut |
| 3 | 92-0762 | 1 | Washer-Spring |
| 4 | 33114-025 | 11 | Screw-HH |
| 5 | 92-0662 | 1 | Cap-Oil |
| 6 | 92-0788 | 1 | O-Ring |
| 7 | 92-0652 | 1 | Cover-Upper |
| 8 | 92-0765 | 4 | Pin-Parallel |
| 9 | 92-0653 | 1 | Cover-Side |
| 10 | 42-9530 | 25 | Bolt/Washer |
| 11 | 92-0809 | 1 | Set-Shim |
| 12 | 92-0787 | 1 | O-Ring |
| 13 | 92-0773 | 1 | Plug-Drain |
| 14 | 92-0789 | 1 | O-Ring |
| 15 | 92-0760 | 1 | Ring-Snap |
| 17 | 92-0654 | 1 | Carrier-Differential |
| 18 | 48-7730 | 5 | Screw-HH |
| 19 | 92-0651 | 1 | Case-Transmission |
| 20 | 100-4460 | 1 | Shim Set |
| 21 | 100-4461 | 1 | Plate-Center |
| 22 | 92-0759 | 1 | Ring-Snap |
| 23 | 92-0807 | 1 | Cap-Sealing |
| 24 | 48-7560 | 1 | Bolt-HH |
| 25 | 92-0706 | 1 | Shaft-Fork |

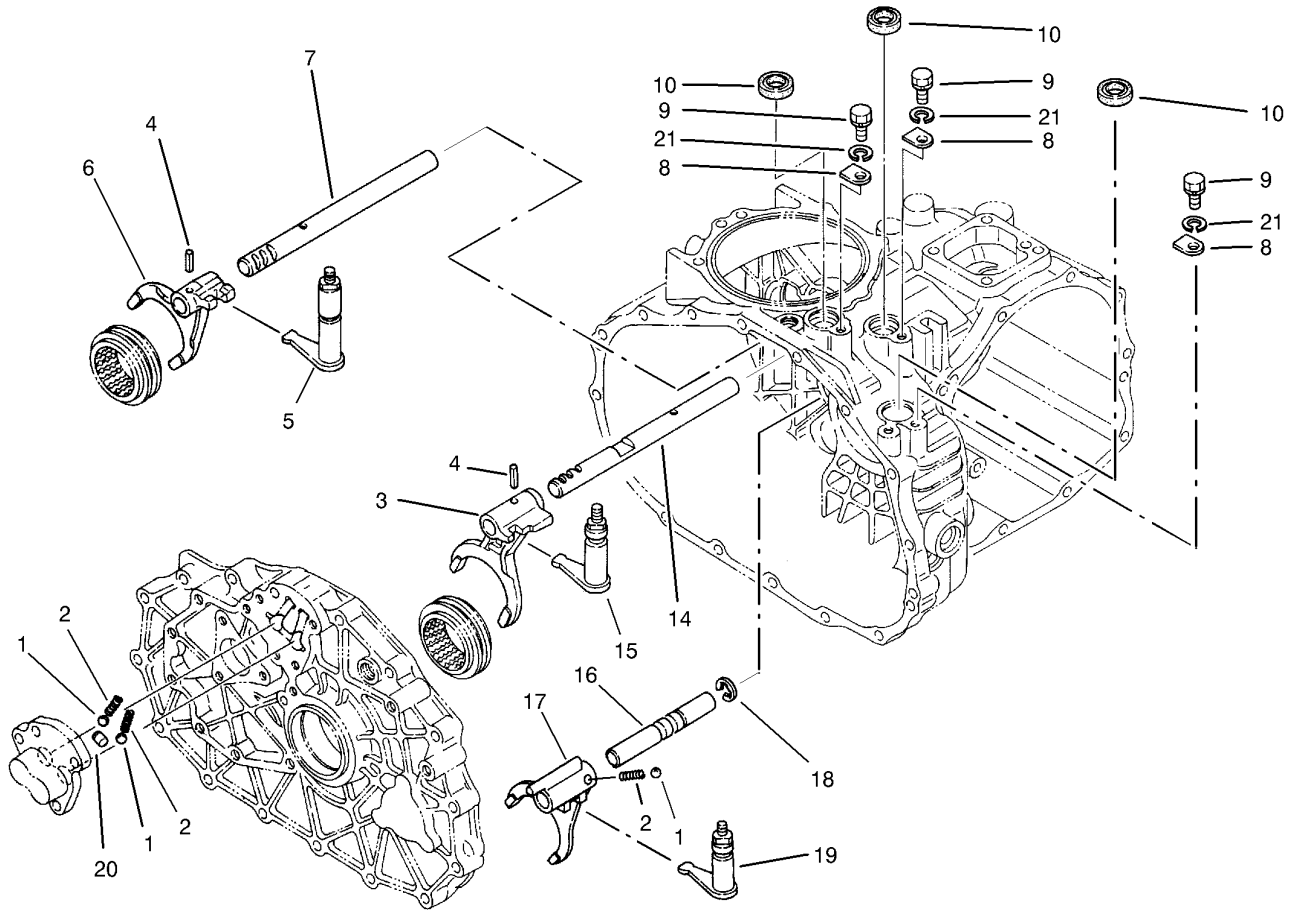
| Ref | Part No. | Qty. | Description |
|-----|----------|------|---------------------|
| 26 | 92-0791 | 1 | Seal-Oil |
| 27 | 92-0743 | 1 | Breather-Air |
| 28 | 92-0804 | 1 | Stud |
| 29 | 92-0790 | 1 | O-Ring |
| 30 | 92-0655 | 1 | Cover-Seal, Axle |
| 31 | 92-0796 | 5 | Bolt |
| 32 | 42-9850 | 42 | Washer-Lock, Spring |
| 34 | 100-4465 | 1 | Shim (W/Tab) |



Gear Shaft Assembly Transaxle Assembly No. 105-4180

| Ref | Part No. | Qty. | Description |
|-----|----------|------|--------------------------|
| 1 | 251-8 | 1 | Bearing-Ball |
| 2 | 92-0753 | 1 | Ring-Snap |
| 3 | 92-0740 | 3 | Washer-Thrust |
| 4 | 92-0781 | 4 | Bearing-Needle |
| 5 | 92-0820 | 1 | Gear-Main, 27 Tooth |
| 6 | 92-0667 | 3 | Ring-Synchro |
| 7 | 92-0668 | 2 | Shifter-Synchro |
| 8 | 251-346 | 2 | Bearing-Ball |
| 9 | 92-0824 | 1 | Shaft-Idler, Reverse |
| 10 | 92-0684 | 1 | Gear-Reverse, 33 Tooth |
| 11 | 92-0778 | 2 | Bearing |
| 12 | 92-0664 | 2 | Hub-Synchro |
| 13 | 92-0666 | 4 | Spring-Synchro |
| 14 | 92-0763 | 3 | Ring-Snap |
| 15 | 92-0821 | 1 | Gear-Main, 24 Tooth |
| 16 | 92-0663 | 1 | Shaft-Main |
| 17 | 92-0772 | 2 | Key |
| 18 | 92-0687 | 1 | Gear-Main, 16 Tooth |
| 19 | 92-0672 | 1 | Gear-Main, 18 Tooth |
| 20 | 92-0754 | 1 | Ring-Snap |
| 21 | 92-0673 | 1 | Gear-Main, 14 Tooth |
| 22 | 92-0650 | 1 | Bearing |
| 23 | 92-0665 | 6 | Key-Synchro |
| 24 | 92-0822 | 1 | Gear-Reduction, 28 Tooth |

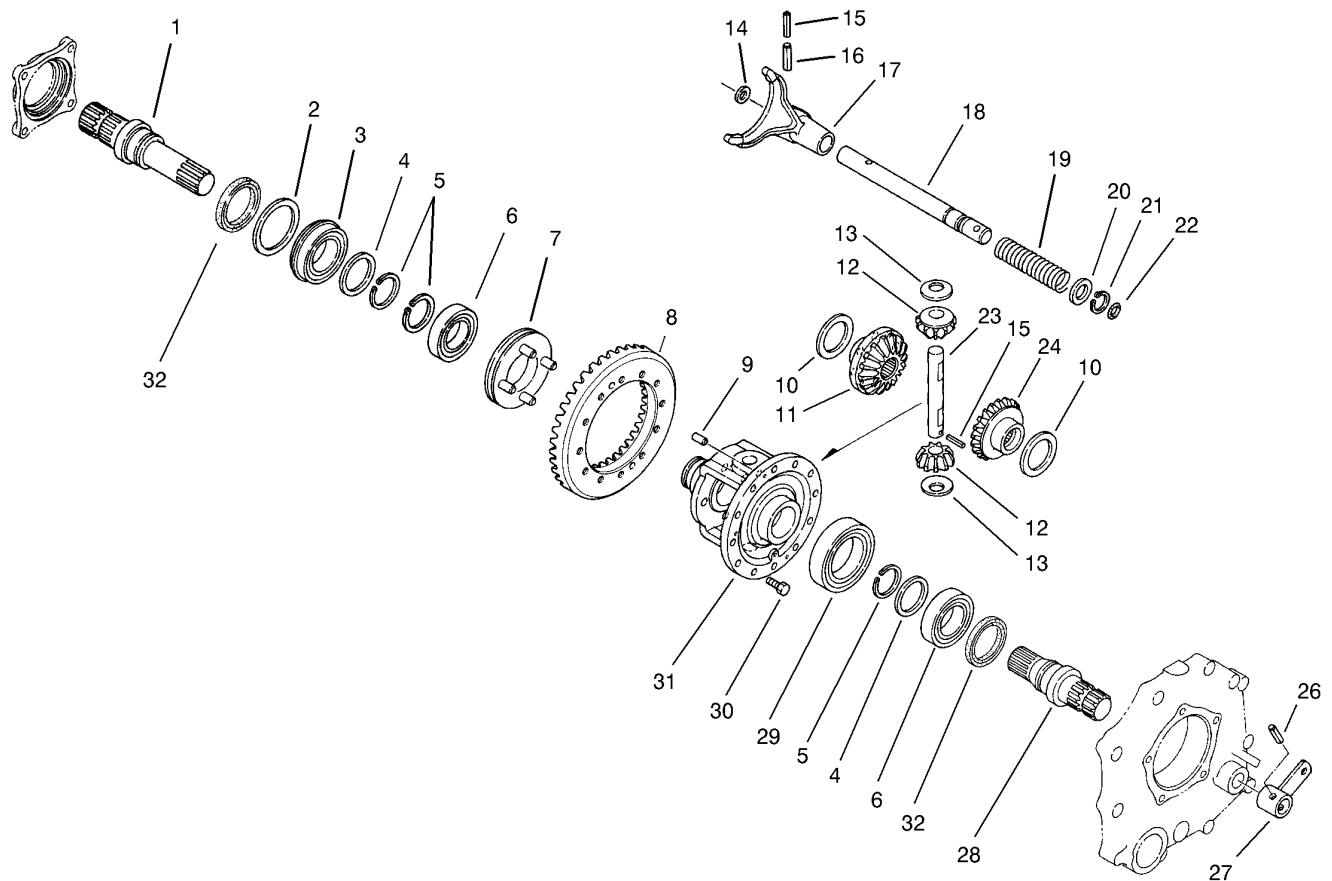
| Ref | Part No. | Qty. | Description |
|-----|----------|------|---------------------------|
| 25 | 92-0679 | 1 | Gear-Reduction, H23 Tooth |
| 26 | 92-0680 | 1 | Collar |
| 27 | 92-0823 | 1 | Gear-Reduction, 43 Tooth |
| 28 | 92-0674 | 1 | Shaft-Reduction |
| 29 | 92-0682 | 1 | Washer-Thrust |
| 30 | 92-0681 | 2 | Bearing-Needle |
| 31 | 92-0677 | 1 | Gear-Reduction, 49 Tooth |
| 32 | 92-0819 | 1 | Gear-Reduction, 40 Tooth |
| 33 | 92-0782 | 1 | Bearing-Needle |
| 34 | 105-7985 | 1 | Bearing |



Shift Fork Assembly Transaxle Assembly No. 105-4180

| Ref | Part No. | Qty. | Description |
|-----|----------|------|---------------------|
| 1 | 92-0785 | 3 | Ball-Steel |
| 2 | 92-0731 | 3 | Spring |
| 3 | 92-0700 | 1 | Fork-Shift |
| 4 | 92-0769 | 2 | Pin-Roll |
| 5 | 92-0817 | 1 | Arm-Shift |
| 6 | 92-0701 | 1 | Fork-Shift |
| 7 | 92-0699 | 1 | Shaft-Fork |
| 8 | 92-0732 | 3 | Plate-Keeper |
| 9 | 48-7700 | 3 | Screw-HH |
| 10 | 92-0729 | 3 | Seal-Oil |
| 14 | 92-0698 | 1 | Shaft-Fork |
| 15 | 92-0816 | 1 | Arm-Shift |
| 16 | 92-0708 | 1 | Shaft-Fork |
| 17 | 92-0709 | 1 | Fork-Shift |
| 18 | 92-0761 | 1 | Ring-E |
| 19 | 92-0818 | 1 | Arm-Shift |
| 20 | 92-0705 | 1 | Lock-Spindle |
| 21 | 42-9850 | 3 | Washer-Lock, Spring |

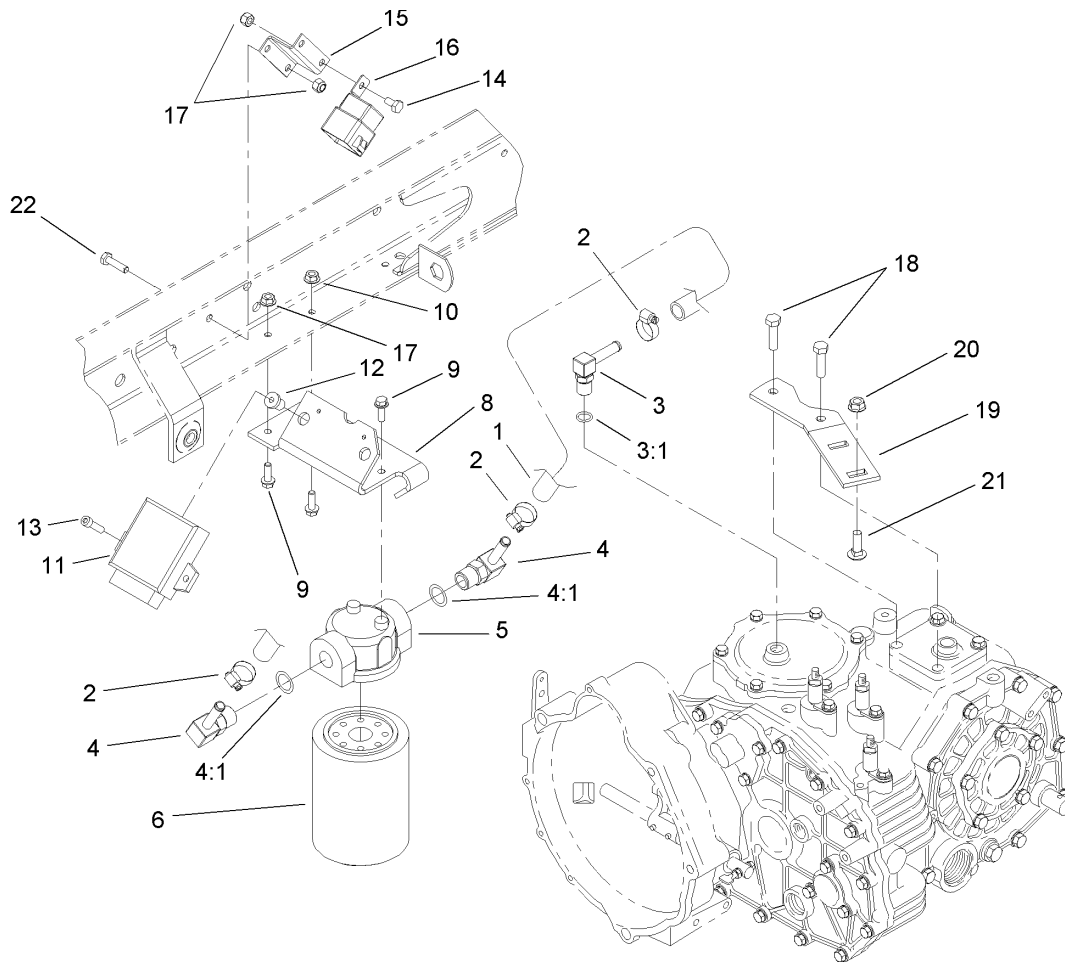
| | | | |
|--|--|--|--|
| | | | |
| | | | |
| | | | |
| | | | |



Differential Gear Assembly Transaxle Assembly No. 105-4180

| Ref | Part No. | Qty. | Description |
|-----|----------|------|-------------------------------|
| 1 | 92-0726 | 1 | Shaft-Axle, Right |
| 2 | 92-0728 | 1 | Washer |
| 3 | 92-0780 | 1 | Bearing |
| 4 | 92-0727 | 2 | Washer |
| 5 | 92-0756 | 3 | Ring-Snap |
| 6 | 92-0775 | 2 | Bearing |
| 7 | 92-0730 | 1 | Slider-Differential, Lock |
| 8 | 105-7983 | 1 | Countershaft And Ring Gear |
| 9 | 92-0765 | 2 | Pin-Parallel |
| 10 | 92-0747 | 2 | Side-Gear, Left Inner |
| 11 | 92-0746 | 1 | Gear-Side, RH |
| 12 | 92-0748 | 2 | Pinion-Differential |
| 13 | 92-0750 | 2 | Washer |
| 14 | 92-0744 | 1 | Washer |
| 15 | 92-0768 | 2 | Pin-Roll, Spring |
| 16 | 92-0771 | 1 | Pin-Roll, Spring |
| 17 | 92-0721 | 1 | Fork-Lock, Differential |
| 18 | 92-0722 | 1 | Shaft-Fork, Lock Differential |
| 19 | 92-0723 | 1 | Spring-Lock, Differential |
| 20 | 92-0733 | 1 | Washer |
| 21 | 92-0753 | 1 | Ring-Snap |
| 22 | 92-0787 | 1 | O-Ring |
| 23 | 92-0749 | 1 | Shaft-Pinion |
| 24 | 92-0745 | 1 | Gear-Side, LH |

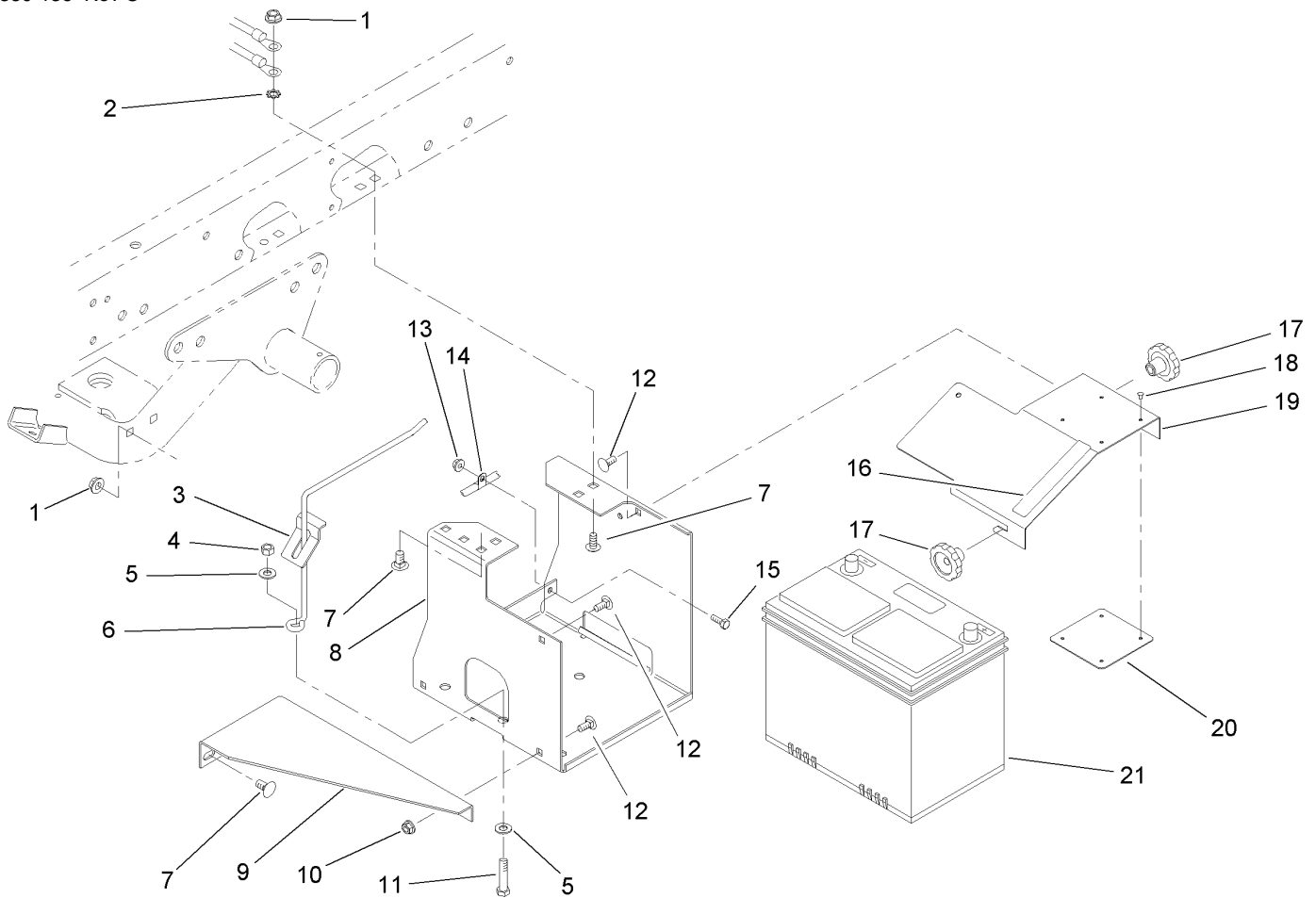
| Ref | Part No. | Qty. | Description |
|-----|----------|------|------------------------|
| 26 | 92-0770 | 1 | Pin-Roll, Spring |
| 27 | 92-0724 | 1 | Arm-Lock, Differential |
| 28 | 92-0725 | 1 | Shaft-Axle, Left |
| 29 | 92-0776 | 1 | Bearing |
| 30 | 92-0803 | 12 | Bolt |
| 31 | 92-0720 | 1 | Case-Differential |
| 32 | 92-0793 | 2 | Seal-Oil |



Hydraulic Filter and Relay Assembly

| Ref | Part No. | Qty. | Description |
|-----|-----------|------|--------------------------|
| 1 | 87-5730 | 1 | Hose |
| 2 | 2412-36 | 3 | Clamp-Hose |
| 3 | 354-135 | 1 | Fitting-HYD, 90 DEG |
| 3:1 | 237-42 | 1 | O-Ring |
| 4 | 354-134 | 2 | Fitting-HYD, 90 DEG |
| 4:1 | 237-79 | 1 | O-Ring |
| 5 | 87-8780 | 1 | Head-Filter |
| 6 | 54-0110 | 1 | Filter-Oil, Transmission |
| 8 | 105-4199 | 1 | Bracket-Mount, Filter |
| 9 | 3234-4 | 3 | Screw-HHF |
| 10 | 32128-33 | 1 | Nut-HF |
| 11 | 105-1768 | 1 | Ecm |
| 12 | 32117-1 | 2 | Nut-Insert |
| 13 | 3274-9 | 2 | Screw-HSH |
| 14 | 321-2 | 2 | Screw-HH |
| 15 | 105-1776 | 1 | Bracket-Mount, Relay |
| 16 | 99-7430 | 2 | Relay |
| 17 | 32128-33 | 4 | Nut-HF |
| 18 | 33114-030 | 2 | Screw-HH |
| 19 | 105-9472 | 1 | Plate-Mount, Muffler |
| 20 | 32128-20 | 2 | Nut-HF |
| 21 | 3230-2 | 2 | Bolt-CARR |
| 22 | 321-4 | 2 | Screw-HH |

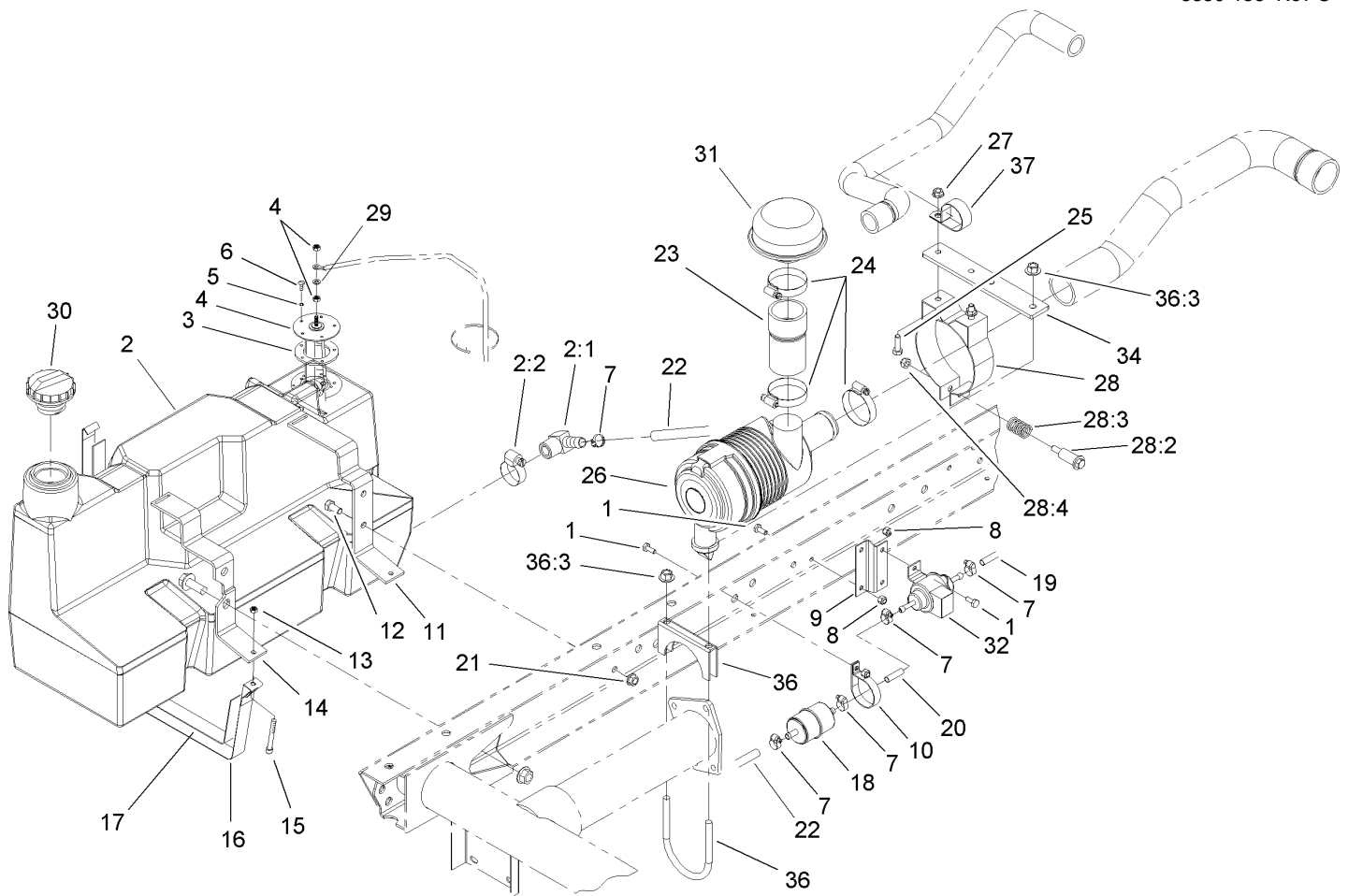
| | | | |
|--|--|--|--|
| | | | |
| | | | |
| | | | |
| | | | |



Battery Assembly

| Ref | Part No. | Qty. | Description |
|-----|------------|------|--------------------------|
| 1 | 3290-357 | 6 | Nut-HHF, Whiz |
| 2 | 3255-9 | 1 | Washer-Lock, EXT |
| 3 | 87-7610 | 1 | Tab-Support, Battery |
| 4 | 3296-39 | 1 | Nut-Lock, NI |
| 5 | 3256-24 | 2 | Washer-Flat |
| 6 | 87-7600 | 1 | Rod-Support, Battery |
| 7 | 3231-21 | 6 | Screw-CARR |
| 8 | 87-5120-03 | 1 | Bracket-Holder, Battery |
| 9 | 87-5110-03 | 1 | Support-Base, Battery |
| 10 | 32128-20 | 2 | Nut-HF |
| 11 | 323-9 | 1 | Screw-HH |
| 12 | 3230-23 | 4 | Screw-CARR |
| 13 | 32128-33 | 1 | Nut-HF |
| 14 | 2412-89 | 1 | Clamp |
| 15 | 321-4 | 1 | Screw-HH |
| 16 | 93-6687 | 1 | Decal-No Step |
| 17 | 19-4050 | 2 | Knob |
| 18 | 3269-27 | 4 | Rivet-Snap |
| 19 | 87-5130-03 | 1 | Cover-Battery |
| 20 | 87-7620 | 1 | Shield-Terminal, Battery |
| 21 | 106-5190 | 1 | Battery |

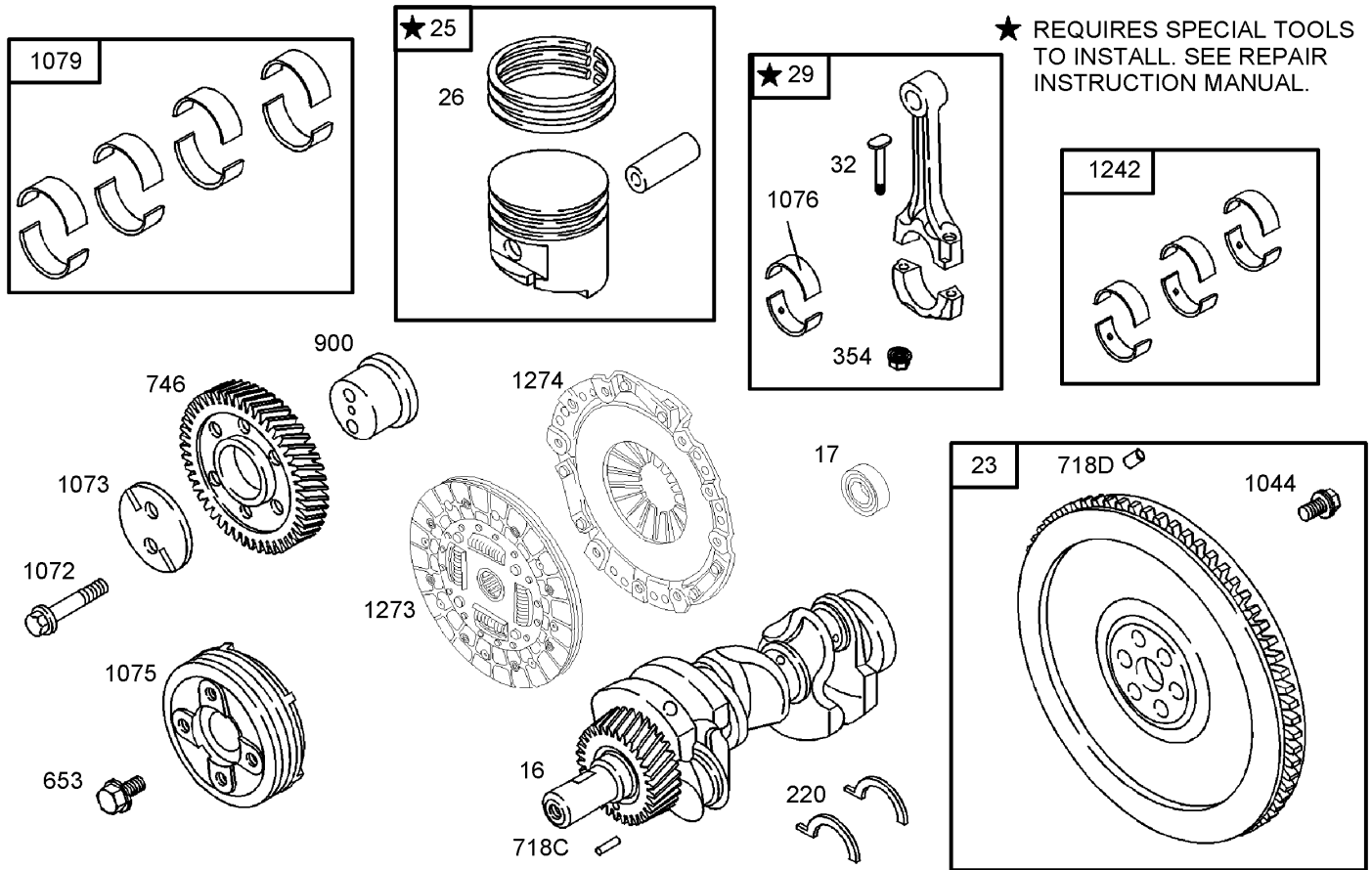
| | | | |
|--|--|--|--|
| | | | |
| | | | |
| | | | |
| | | | |



Fuel Tank and Air Cleaner Assembly

| Ref | Part No. | Qty. | Description |
|-----|------------|------|-------------------------|
| 1 | 321-3 | 5 | Screw-HH |
| 2 | 98-2919 | 1 | Tank-Fuel |
| 2:1 | 353-781 | 1 | Fitting-Elbow |
| 2:2 | 2412-36 | 1 | Clamp-Hose |
| 3 | 62-7650 | 1 | Gasket |
| 4 | 63-7640 | 1 | Sender-Fuel |
| 5 | 3253-15 | 5 | Washer-Lock |
| 6 | 32122-24 | 5 | Screw-PTH |
| 7 | 2412-108 | 5 | Clamp-Worm |
| 8 | 32128-33 | 5 | Nut-HF |
| 9 | 105-1774 | 1 | Bracket-Pump, Fuel |
| 10 | 2412-148 | 1 | Clamp-R |
| 11 | 87-3140-03 | 1 | Support-Gas Tank, Rear |
| 12 | 323-4 | 2 | Screw-HH |
| 13 | 3296-42 | 2 | Nut-Lock, NI |
| 14 | 87-3150-03 | 1 | Support-Gas Tank, Front |
| 15 | 3274-54 | 2 | Screw-HSH |
| 16 | 87-3160 | 2 | Strap-Tank, Gas |
| 17 | 87-3170 | 2 | Felt-Strap |
| 18 | 105-8045 | 1 | Filter-Fuel |
| 19 | 94-1349 | 1 | Hose-Fuel |
| 20 | 80-7360 | 1 | Hose-Fuel |
| 21 | 3290-357 | 2 | Nut-HHF, Whiz |
| 22 | 63-9640 | 1 | Hose |

| Ref | Part No. | Qty. | Description |
|------|-------------|------|----------------------------|
| 23 | 107-7962 | 1 | Hose-Cleaner, Air |
| 24 | 2412-92 | 3 | Clamp-Hose |
| 25 | 322-5 | 2 | Screw-HH |
| 26 | 106-6732 | 1 | Air Cleaner ASM |
| 27 | 32128-20 | 2 | Nut-HF |
| 28 | 93-2191 | 1 | Band-Mounting, Air Cleaner |
| 28:2 | 94-3653 | 1 | Bolt |
| 28:3 | 94-3654 | 1 | Spring |
| 28:4 | 48-9510 | 1 | Nut |
| 29 | 5-3637 | 1 | Spacer |
| 30 | 93-3101 | 1 | Cap-Fuel |
| 31 | 46-7510 | 1 | Hood-Inlet, Air |
| 32 | 99-9196 | 1 | Pump-Fuel |
| 34 | 106-7948-03 | 1 | Bracket-Mount |
| 36 | 107-7954 | 1 | Clamp-Muffler |
| 36:3 | 32128-43 | 2 | Nut-Flange |
| 37 | 2412-147 | 1 | Clamp |

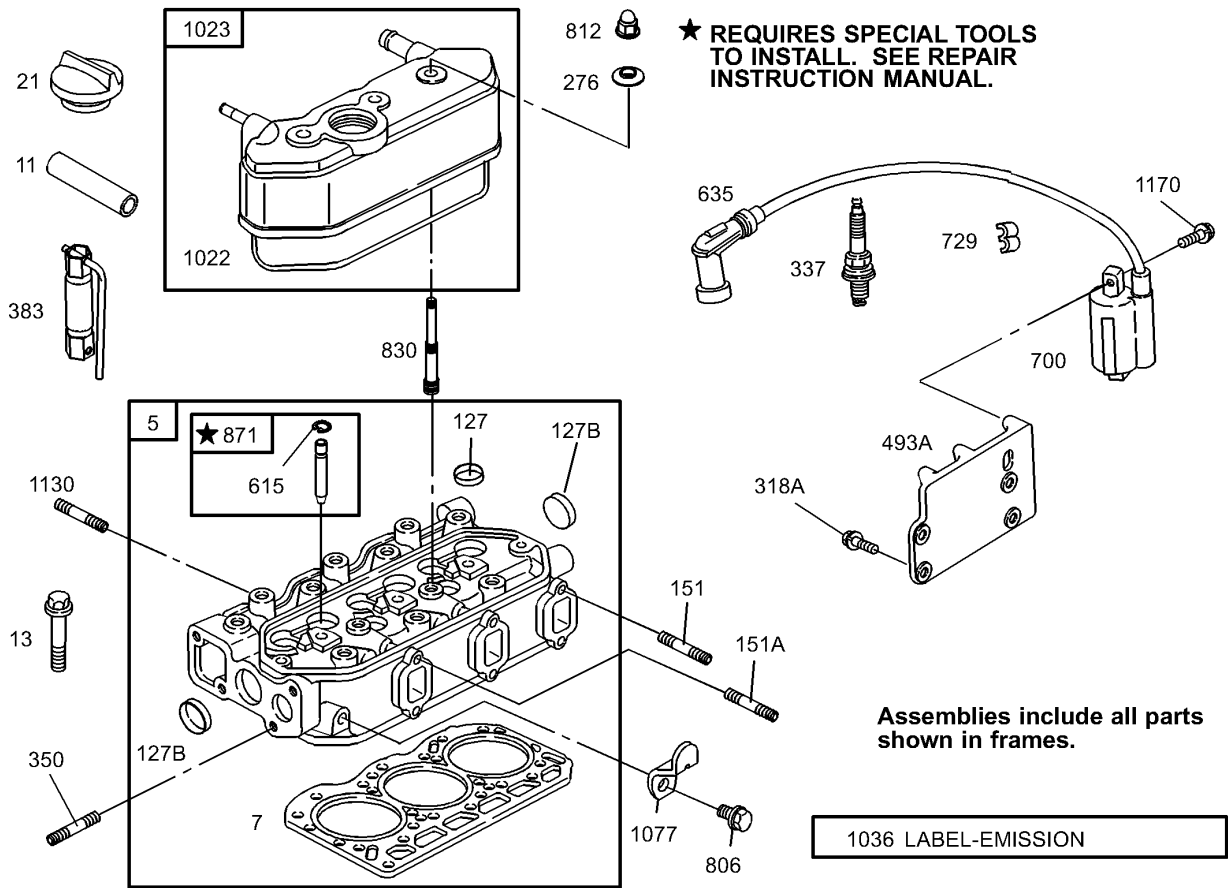


Assemblies include all parts shown in frames.

Crankshaft Assembly

| Ref | Part No. | Qty. | Description |
|------|----------|------|-------------------------------------|
| 16 | 105-9339 | 1 | Crankshaft |
| 17 | 105-9324 | 1 | Bearing-Ball, Radial |
| 23 | 105-9323 | 1 | Flywheel ASM |
| 25 | 99-9025 | 1 | Piston ASM (Standard) |
| 25 | 99-9026 | 1 | Piston ASM (.010 Over) |
| 26 | 99-9027 | 1 | Ring Set (Standard) |
| 26 | 99-9028 | 1 | Ring Set (.010 Over) |
| 29 | 99-9029 | 1 | Rod-Connecting |
| 32 | 99-9030 | 1 | Screw-Rod, Connecting |
| 220 | 99-9035 | 1 | Washer-Thrust |
| 220 | 99-9036 | 1 | Washer-Thrust (.005 In Oversized) |
| 354 | 99-9034 | 1 | Nut-Hex |
| 653 | 107-9897 | 1 | Screw-Hex |
| 746 | 99-9609 | 1 | Gear-Drive |
| 900 | 99-9039 | 1 | Shaft-Gear |
| 1044 | 99-9031 | 1 | Screw-Hex |
| 1072 | 99-9032 | 1 | Screw-Hex |
| 1073 | 99-9040 | 1 | Plate-Gear, Idler |
| 1075 | 99-9041 | 1 | Pulley-Crankshaft |
| 1076 | 99-9042 | 1 | Bearing-Rod |
| 1079 | 99-9045 | 1 | Set-Bearing, Main (Set Of 8) |
| 1079 | 99-9046 | 1 | Set-Bearing, Main (.010 Undersized) |

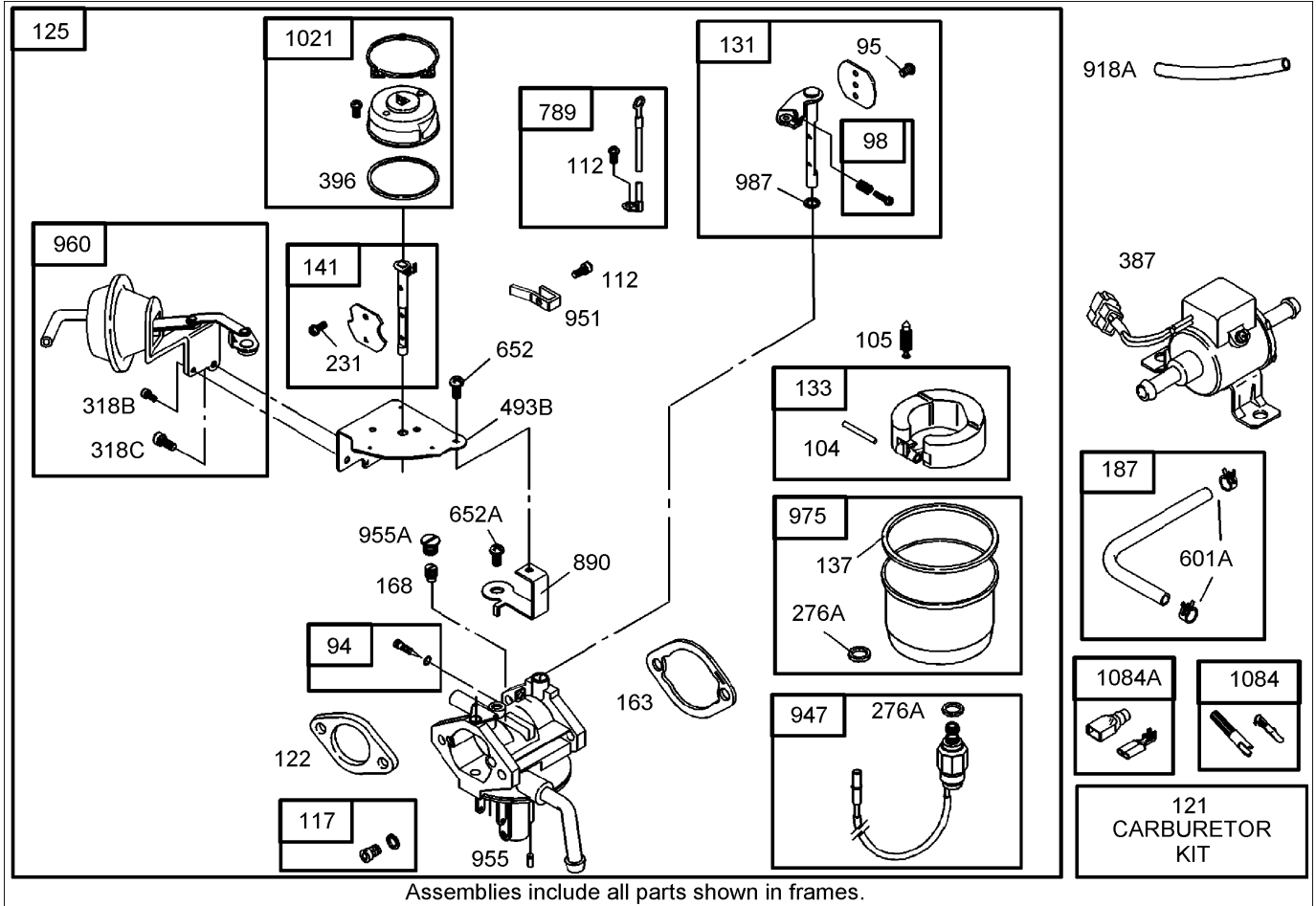
| Ref | Part No. | Qty. | Description |
|------|----------|------|------------------------------------|
| 1242 | 99-9043 | 1 | Set-Bearing, Rod |
| 1242 | 99-9044 | 1 | Set-Bearing, Rod (.010 Undersized) |
| 1273 | 104-9219 | 1 | Disc-Clutch |
| 1274 | 104-9231 | 1 | Plate-Pressure, Clutch |
| 718C | 99-9037 | 1 | Pin-Locating |
| 718D | 106-1852 | 1 | Pin-Locating |



Cylinder Head Assembly

| Ref | Part No. | Qty. | Description |
|------|----------|------|-----------------------|
| 5 | 106-1853 | 1 | Head-Cylinder |
| 7 | 99-9254 | 1 | Gasket-Head, Cylinder |
| 11 | 105-9322 | 1 | Hose-Breather |
| 13 | 99-9614 | 1 | Screw-Metric |
| 21 | 99-9052 | 1 | Cap-Fill, Oil |
| 127 | 99-9060 | 1 | Plug-Welch |
| 151 | 99-9058 | 1 | Stud-Metric |
| 276 | 99-9063 | 1 | Washer-Seal |
| 337 | 108-6945 | 1 | Plug-Spark |
| 350 | 99-9057 | 1 | Stud-Metric |
| 383 | 94-1664 | 1 | Wrench-Spark Plug |
| 615 | 99-9067 | 1 | Retainer |
| 635 | 99-9068 | 1 | Boot-Plug, Spark |
| 700 | 99-9069 | 1 | Coil-Ignition |
| 729 | 99-9066 | 1 | Clip-Wire |
| 806 | 99-9270 | 1 | Screw-Hex |
| 812 | 99-9061 | 1 | Nut-Hex, Metric |
| 830 | 99-9101 | 1 | Stud-Arm, Rocker |
| 871 | 99-9070 | 1 | Bushing-Guide |
| 1022 | 99-9073 | 1 | Gasket-Cover, Rocker |
| 1023 | 99-9074 | 1 | Cover-Rocker |
| 1036 | 99-9075 | 1 | Emission Label Kit |
| 1077 | 99-9076 | 1 | Bracket-Lifting |
| 1130 | 99-9055 | 1 | Stud-Metric |

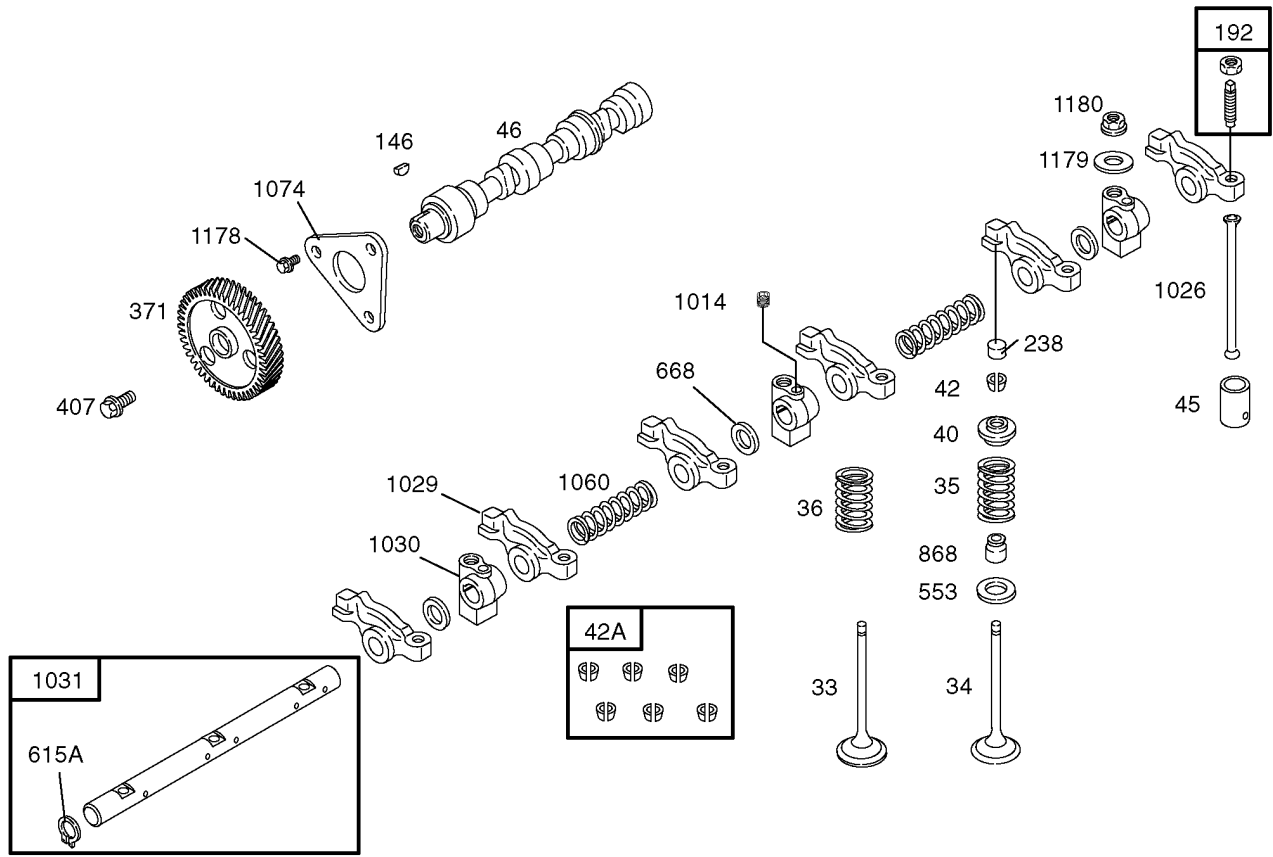
| Ref | Part No. | Qty. | Description |
|------|----------|------|------------------|
| 1170 | 99-9056 | 1 | Screw-Hex |
| 127B | 99-9008 | 1 | Plug-Welch |
| 151A | 99-9059 | 1 | Stud-Metric |
| 318A | 99-9202 | 1 | Screw-Hex |
| 493A | 99-9065 | 1 | Bracket-Mounting |



Carburetor Assembly

| Ref | Part No. | Qty. | Description |
|-----|----------|------|---------------------|
| 94 | 106-1856 | 1 | Idle Mixture Kit |
| 95 | 106-1857 | 1 | Screw |
| 98 | 106-1858 | 1 | Idle Speed Kit |
| 104 | 106-1859 | 1 | Pin-Hinge, Float |
| 105 | 106-1860 | 1 | Valve-Needle, Float |
| 112 | 105-2063 | 2 | Screw-Mtg., Valve |
| 117 | 110-2564 | 1 | Jet-Main |
| 121 | 110-2565 | 1 | Carburetor Kit |
| 122 | 99-9184 | 1 | Spacer-Carburator |
| 125 | 110-2563 | 1 | Carburetor Assembly |
| 131 | 110-2566 | 1 | Throttle Shaft Kit |
| 133 | 106-1864 | 1 | Float-Carburetor |
| 137 | 106-1865 | 1 | Gasket-Bowl, Float |
| 141 | 106-1866 | 1 | Choke Shaft Kit |
| 163 | 105-9329 | 1 | Gasket-Funnel, Air |
| 168 | 106-1953 | 1 | Jet-Circuit, Idle |
| 187 | 99-9238 | 1 | Line-Fuel |
| 231 | 106-1857 | 1 | Screw |
| 387 | 99-9196 | 1 | Pump-Fuel |
| 396 | 106-1871 | 1 | Gasket-Cover, Choke |
| 652 | 106-1869 | 1 | Screw |
| 789 | 106-1875 | 1 | Harness-Wiring |
| 890 | 106-1876 | 1 | Bracket-Support |
| 947 | 110-2511 | 1 | Solenoid-Valve |

| Ref | Part No. | Qty. | Description |
|-------|----------|------|----------------------|
| 951 | 106-1878 | 1 | Lever-Choke |
| 955 | 106-1879 | 1 | Plug-Carburetor |
| 960 | 106-1881 | 1 | Break-Choke, Vacuum |
| 975 | 106-1882 | 1 | Bowl-Float |
| 987 | | 1 | Seal-Shaft, Throttle |
| 1021 | 106-1883 | 1 | Activator-Choke |
| 1084 | 99-9245 | 1 | Connector |
| 276A | 106-1868 | 1 | Washer-Sealing |
| 318B | 106-1869 | 1 | Screw |
| 318C | 106-1870 | 1 | Screw |
| 493B | 106-1872 | 1 | Bracket-Mounting |
| 601A | 99-9242 | 1 | Clamp-Hose |
| 652A | 106-1874 | 1 | Screw |
| 918A | 105-9330 | 1 | Hose-Vacuum |
| 955A | 106-1880 | 1 | Plug-Carburetor |
| 1084A | 99-9098 | 1 | Connector |

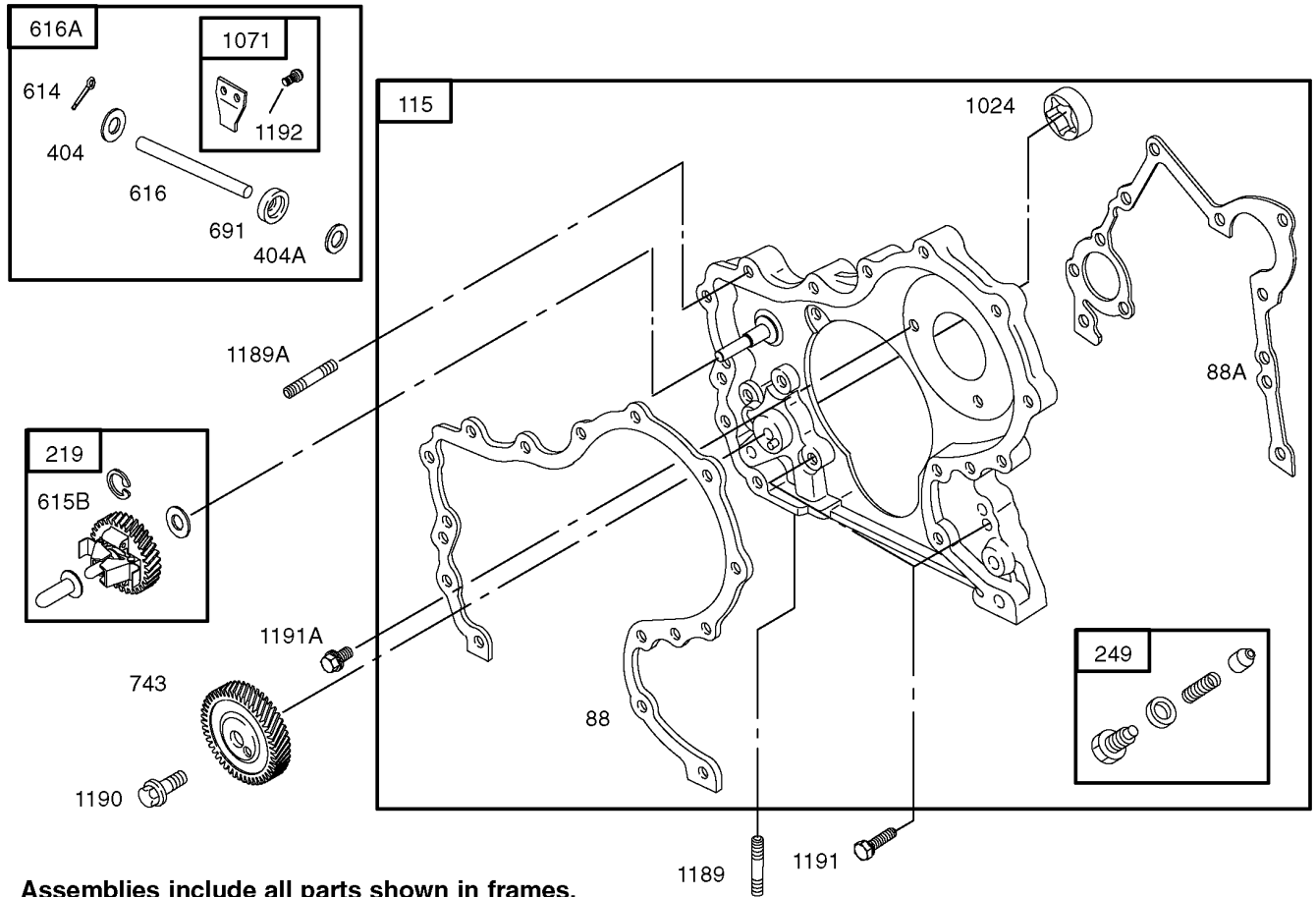


Assemblies include all parts shown in frames.

Cam Shaft Assembly

| Ref | Part No. | Qty. | Description |
|------|----------|------|---|
| 33 | 99-9080 | 1 | Valve-Exhaust |
| 34 | 99-9081 | 1 | Valve-Intake |
| 35 | 99-9082 | 1 | Spring-Valve |
| 36 | 99-9082 | 1 | Spring-Valve |
| 40 | 99-9084 | 1 | Retainer-Valve |
| 42 | 99-9086 | 1 | Keeper-Valve |
| 45 | 99-9088 | 1 | Tappet-Valve |
| 46 | 99-9097 | 1 | Shaft-Cam |
| 146 | 99-9095 | 1 | Key-Woodruff |
| 192 | 99-9092 | 1 | Adjuster-Arm, Rocker (Use Before Engine Serial #04090100) |
| 192 | 112-2978 | 1 | Adjuster-Arm, Rocker (Use Before Engine Serial #04083100) |
| 238 | 99-9094 | 1 | Cap-Valve (Use Before Engine Serial #04090100) |
| 238 | 112-2979 | 1 | Cap-Valve (Use Before Engine Serial #04083100) |
| 371 | 99-9641 | 1 | Gear-Cam |
| 407 | 99-9085 | 1 | Screw-Metric |
| 42A | 99-9087 | 1 | Keeper-Valve (Set Of 6) |
| 553 | 99-9096 | 1 | Seat-Spring, Valve |
| 668 | 99-9093 | 1 | Washer-Spacer |
| 868 | 99-9102 | 1 | Seal-Valve |
| 1014 | 99-9090 | 1 | Screw-Metric |

| Ref | Part No. | Qty. | Description |
|------|----------|------|---|
| 1026 | 99-9103 | 1 | Rod-Push (Use Before Engine Serial #04090100) |
| 1026 | 112-2980 | 1 | Rod-Push (Use Before Engine Serial #04083100) |
| 1029 | 99-9104 | 1 | Arm-Rocker |
| 1030 | 99-9107 | 1 | Support-Arm, Rocker |
| 1031 | 99-9106 | 1 | Shaft-Arm, Rocker |
| 1060 | 99-9108 | 1 | Spring-Shaft, Rocker |
| 1074 | 99-9109 | 1 | Retainer-Camshaft |
| 1178 | 99-9083 | 1 | Screw-Hex |
| 1179 | 99-9079 | 1 | Washer-Flat |
| 1180 | 99-9091 | 1 | Nut-Hex, Metric |
| 615A | 99-9099 | 1 | Retainer |

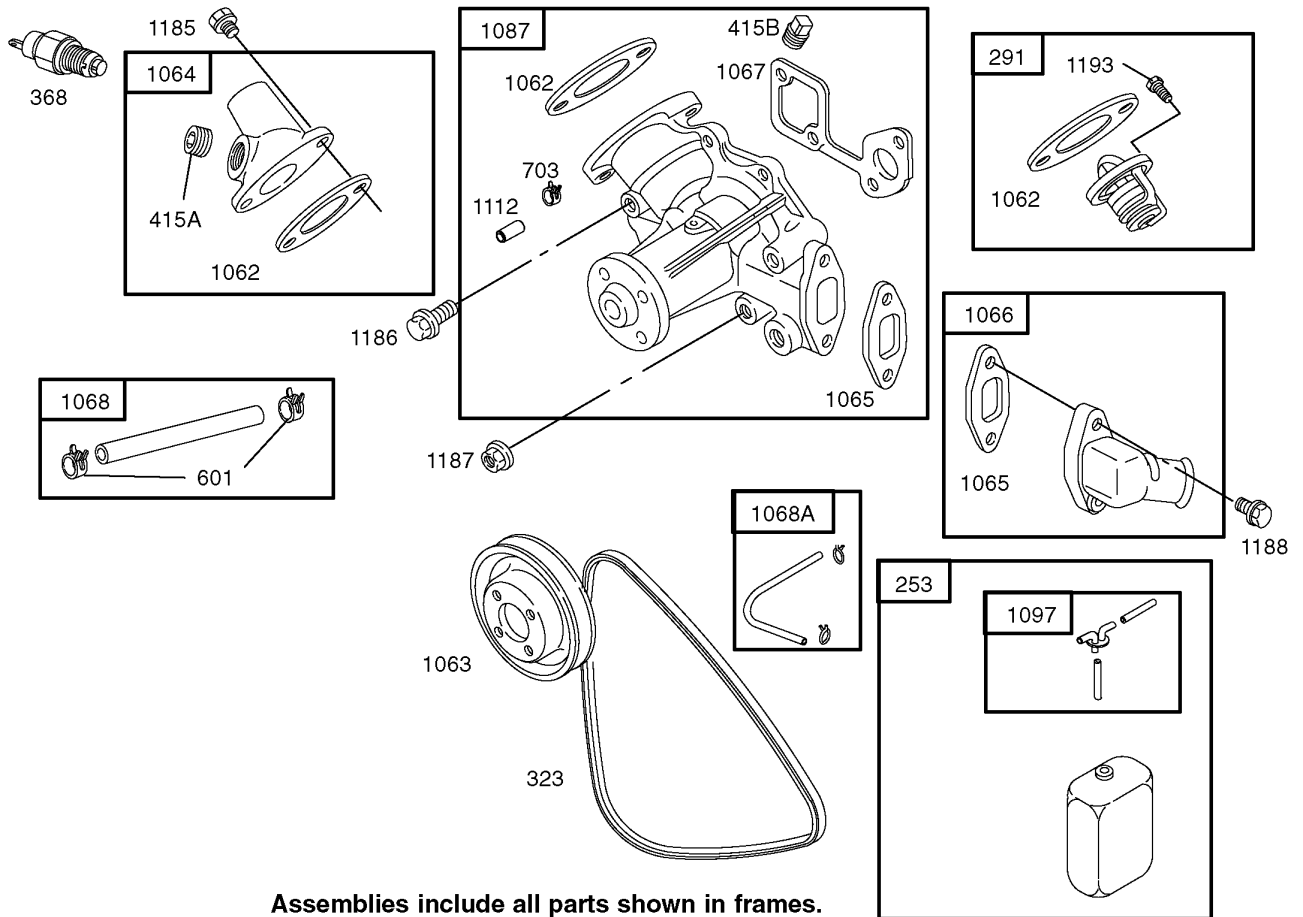


Assemblies include all parts shown in frames.

Gear Housing Assembly

| Ref | Part No. | Qty. | Description |
|--------|----------|------|----------------------|
| ② 1024 | | 1 | Pump-Oil |
| 1071 | 99-9149 | 1 | Paddle-Governor |
| 115 | 99-9138 | 1 | Housing-Gear |
| 1189 | 99-9007 | 1 | Stud-Metric |
| 1189A | 99-9137 | 1 | Stud-Metric |
| 1190 | 99-9135 | 1 | Screw-Hex |
| 1191 | 99-9133 | 1 | Screw-Hex |
| 1191A | 99-9134 | 1 | Screw-Hex |
| 1192 | 99-9143 | 1 | Screw-Hex, Torx |
| 219 | 99-9261 | 1 | Gear-Governor |
| 249 | 99-9142 | 1 | Valve-Relief, Oil |
| 404 | 99-9140 | 1 | Washer-Spacer |
| 404A | 99-9141 | 1 | Washer-Spacer |
| 614 | 99-9053 | 1 | Pin-Cotter |
| 615B | 99-9145 | 1 | Retainer |
| 616 | 99-9146 | 1 | Crank-Governor |
| 616A | 99-9147 | 1 | Crank-Governor |
| 691 | 99-9131 | 1 | Seal-Shaft, Governor |
| 743 | 99-9656 | 1 | Gear-Drive |
| 88 | 99-9132 | 1 | Gasket-Cover |
| 88A | 99-9136 | 1 | Gasket-Cover, Gear |

| | | | |
|--|--|--|--|
| | | | |
| | | | |
| | | | |
| | | | |

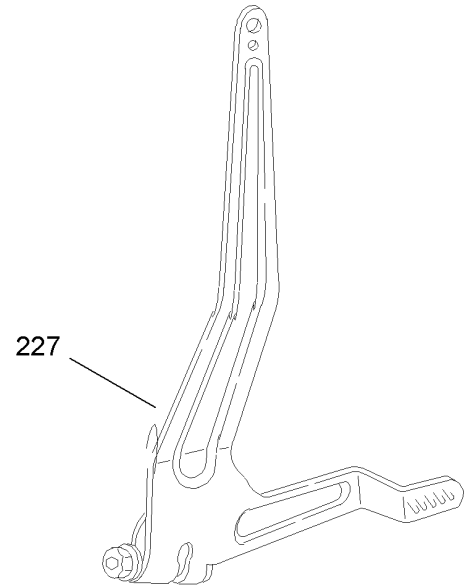
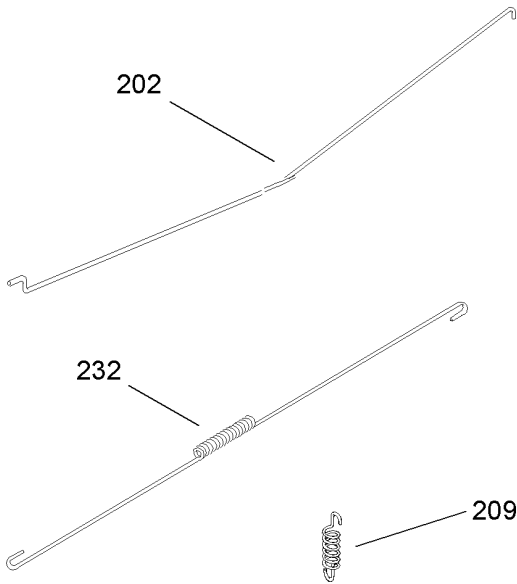


Assemblies include all parts shown in frames.

Water Pump Assembly

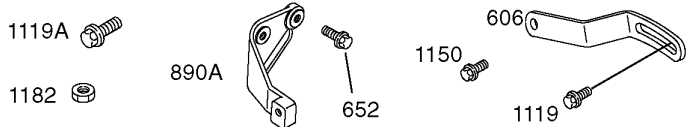
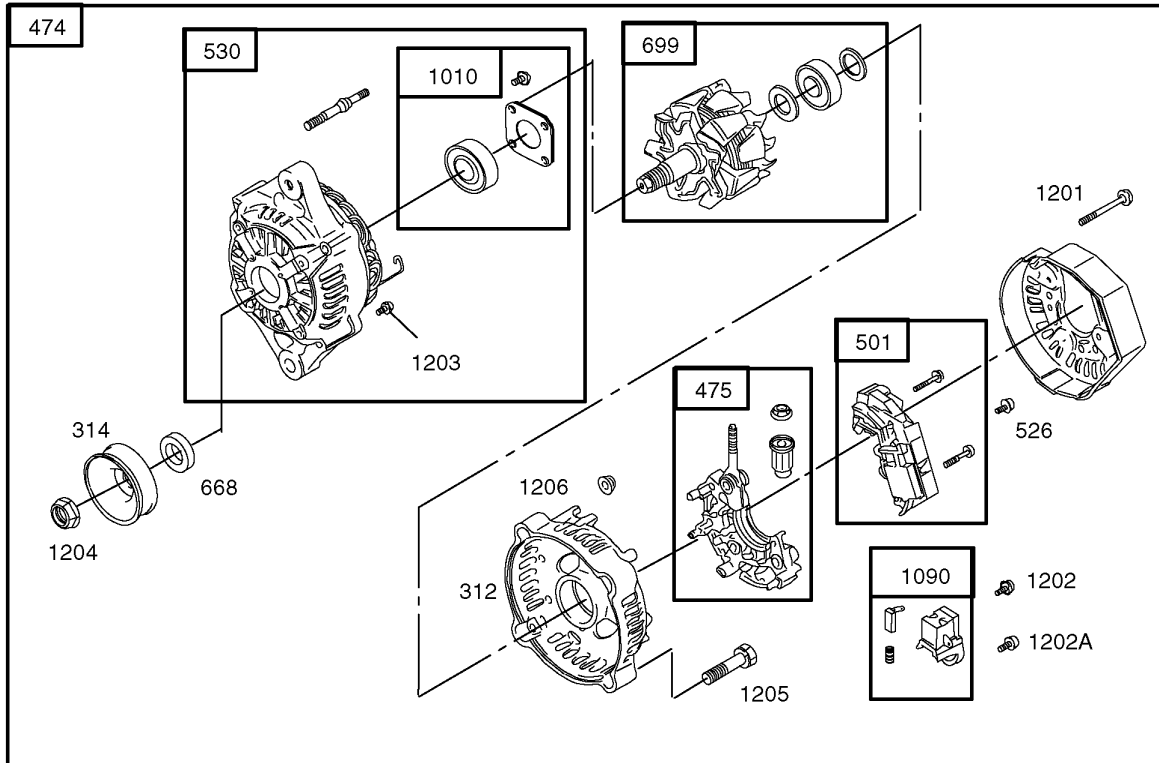
| Ref | Part No. | Qty. | Description |
|-------|----------|------|---------------------------|
| 1062 | 99-9163 | 1 | Gasket-Outlet |
| 1063 | 99-9164 | 1 | Pulley-Pump |
| 1064 | 99-9165 | 1 | Housing-Outlet |
| 1065 | 99-9166 | 1 | Gasket-Housing, Inlet |
| 1066 | 99-9167 | 1 | Housing-Inlet |
| 1067 | 99-9168 | 1 | Gasket-Pump, Water |
| 1068 | 106-1886 | 1 | Hose / Clamp ASM |
| 1068A | 99-9072 | 1 | Hose-Tank, Reserve |
| 1087 | 106-1887 | 1 | Pump-Water |
| 1097 | 99-9071 | 1 | Hose-Tank, Reserve |
| 1112 | 106-1888 | 1 | Tube-Vent |
| 1185 | 99-9004 | 1 | Screw-Hex |
| 1186 | 99-9151 | 1 | Screw-Hex |
| 1187 | 99-9153 | 1 | Nut-Hex, Metric |
| 1188 | 99-9004 | 1 | Screw-Hex |
| 1193 | 99-9152 | 1 | Screw-Metric |
| 253 | 106-1884 | 1 | Tank-Reserve |
| 291 | 99-9155 | 1 | Thermostat |
| 323 | 99-9156 | 1 | Belt-V |
| 368 | 99-9157 | 1 | Switch-Temperature, Water |
| 415A | 99-9158 | 1 | Plug |
| 415B | 99-9159 | 1 | Plug |
| 601 | 99-9160 | 1 | Clamp-Hose |
| 703 | 106-1885 | 1 | Clip |

| | | | |
|--|--|--|--|
| | | | |
|--|--|--|--|



Governor Assembly

| Ref | Part No. | Qty. | Description |
|-----|----------|------|----------------------|
| 202 | 99-9187 | 1 | Link-Governor, Mech. |
| 209 | 106-1889 | 1 | Spring-Governor |
| 227 | 99-9191 | 1 | Lever-Governor |
| 232 | 99-9192 | 1 | Spring-Link |

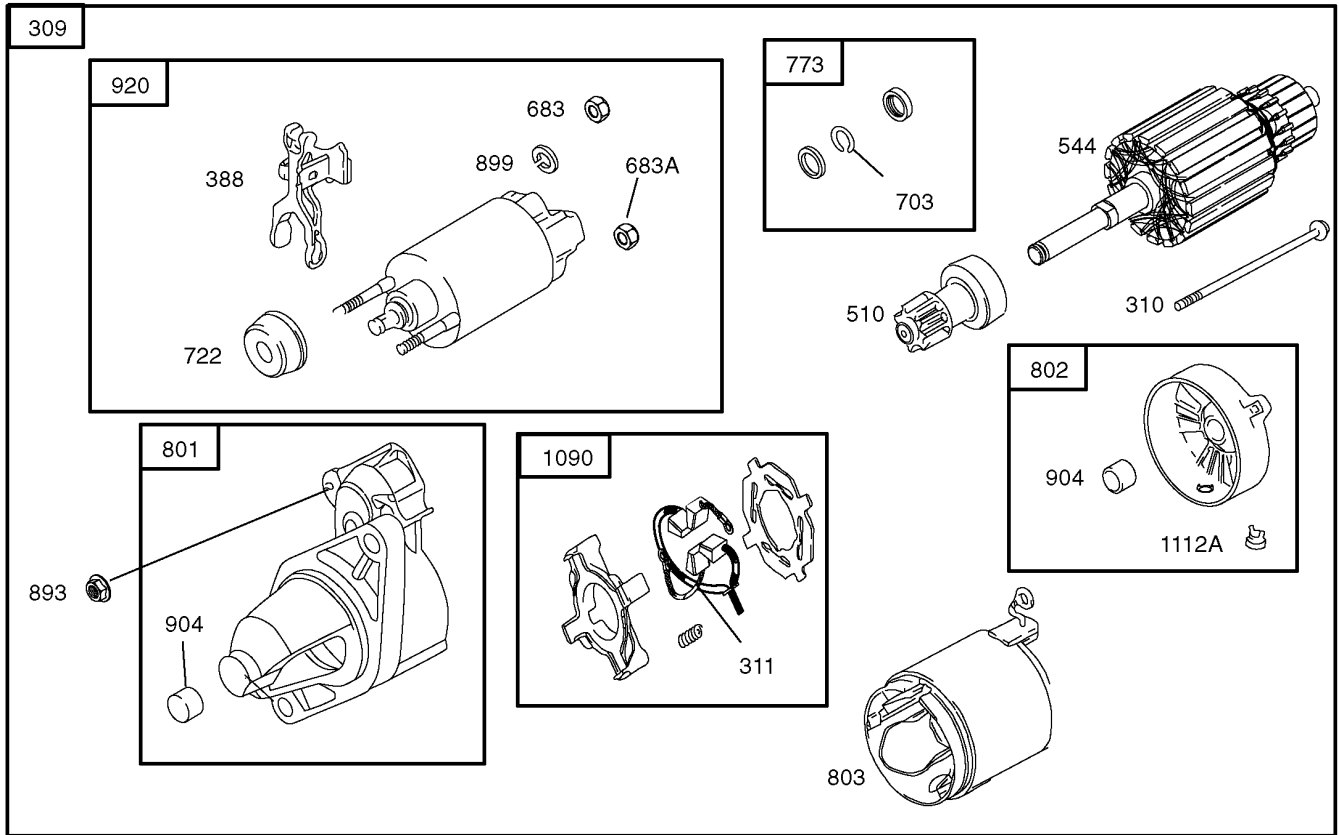


Assemblies include all parts shown in frames.

Alternator Assembly

| Ref | Part No. | Qty. | Description |
|-------|----------|------|--------------------|
| 1010 | 106-1898 | 1 | Retainer-Bearing |
| 1090 | 106-1899 | 1 | Retainer-Brush |
| 1119 | 99-9663 | 1 | Screw-Hex, Metric |
| 1119A | 99-9205 | 1 | Screw-Hex, Metric |
| 1150 | 99-9202 | 1 | Screw-Hex |
| 1182 | 99-9114 | 1 | Nut-Hex, Metric |
| 1201 | 106-1950 | 1 | Screw |
| 1202 | 106-1951 | 1 | Screw |
| 1202A | 106-1894 | 1 | Screw |
| 1203 | 106-1894 | 1 | Screw |
| 1204 | 106-1954 | 1 | Nut |
| 1205 | 106-1955 | 1 | Screw |
| 1206 | 106-1956 | 1 | Nut |
| 312 | 106-1890 | 1 | Housing-End, Brush |
| 314 | 106-1891 | 1 | Pulley-Alternator |
| 474 | 99-9209 | 1 | Alternator |
| 475 | 106-1892 | 1 | Rectifier |
| 501 | 106-1893 | 1 | Regulator |
| 526 | 106-1894 | 1 | Screw |
| 530 | 106-1895 | 1 | Housing-End, Drive |
| 606 | 106-1952 | 1 | Strap-Adjusting |
| 652 | 99-9202 | 1 | Screw-Hex |
| 668 | 106-1896 | 1 | Spacer |
| 699 | 106-1897 | 1 | Rotor |

| Ref | Part No. | Qty. | Description |
|------|----------|------|-----------------|
| 890A | 99-9211 | 1 | Bracket-Support |



Assemblies include all parts shown in frames.

Starter Motor Assembly

| Ref | Part No. | Qty. | Description |
|-------|----------|------|---------------------|
| 1090 | 106-1974 | 1 | Retainer-Brush |
| 1112A | 106-1975 | 1 | Plug-Vent |
| 309 | 100-9837 | 1 | Motor-Starter |
| 310 | 106-1957 | 1 | Bolt |
| 311 | 106-1958 | 1 | Brush Set |
| 388 | 106-1959 | 1 | Lever-Drive, Pinion |
| 413 | 99-9206 | 1 | Nut-Hex, Metric |
| 510 | 106-1960 | 1 | Drive-Starter |
| 544 | 106-1961 | 1 | Armature-Starter |
| 683 | 106-1962 | 1 | Nut |
| 683A | 106-1963 | 1 | Nut |
| 697 | 99-9201 | 1 | Screw-Hex |
| 703 | 106-1964 | 1 | Clip |
| 722 | 106-1965 | 1 | Seal-Plunger |
| 773 | 106-1966 | 1 | Retainer |
| 801 | 106-1967 | 1 | Cap-Drive |
| 802 | 106-1968 | 1 | Cap-End |
| 803 | 106-1969 | 1 | Housing-Starter |
| 893 | 106-1970 | 1 | Nut |
| 899 | 106-1971 | 1 | Washer |
| 904 | 106-1972 | 1 | Bearing-Needle |
| 920 | 106-1973 | 1 | Solenoid-Starter |

| | | | |
|--|--|--|--|
| | | | |
| | | | |
| | | | |
| | | | |

NOTES

NOTES

