



Customer Service Bulletin Commercial Business Group

Greensmaster® 1000

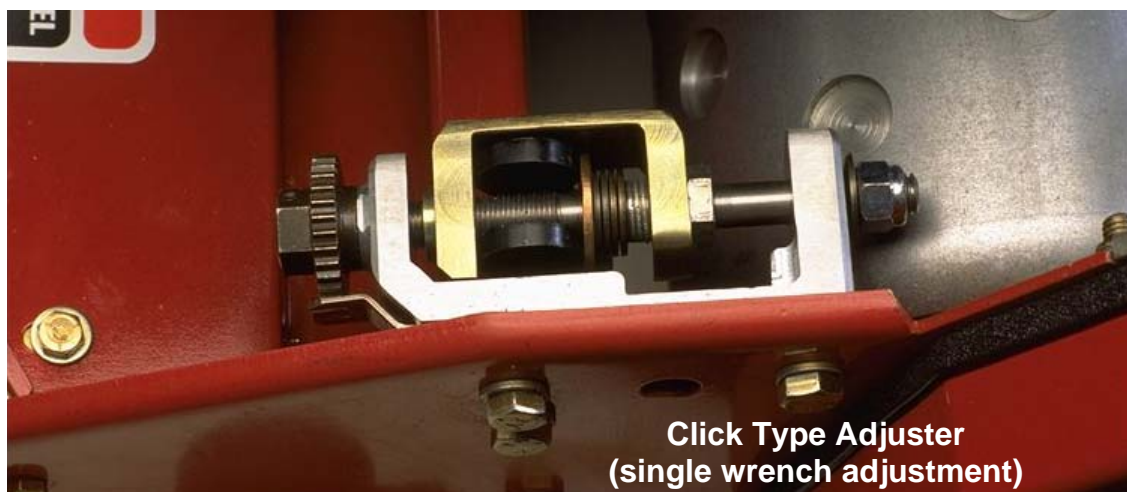
February 20, 2006

<u>Model/Serial Range:</u>	<u>Model Number:</u>	<u>Serial Numbers:</u>
Greensmaster 1000	04050	00001-29999
Greensmaster 1000	04051	30001-59999

Subject: Availability of Bedbar Adjustment Kit (94-5886) conversion.

As a customer convenience, Bedbar Adjustment Kit (94-5886) is available to convert the original style adjustment mechanism to the click type adjustment design currently used on Greensmaster 1000 products. This kit contains the parts necessary to convert one adjuster on a unit. Two kits will be required to convert one complete machine. A copy of the Installation Instructions is included with this bulletin.

Contact your local Commercial Products Distributor if you have any questions about this bulletin.



TORO®

PART NO. 94-5886

INSTALLATION INSTRUCTIONS

BEDBAR ADJUSTER KIT GREENSMATER® 1000

REMOVE BEDBAR ADJUSTER

1. Loosen jam nut securing each bedbar adjusting screw to each bedbar adjuster (Fig. 1).

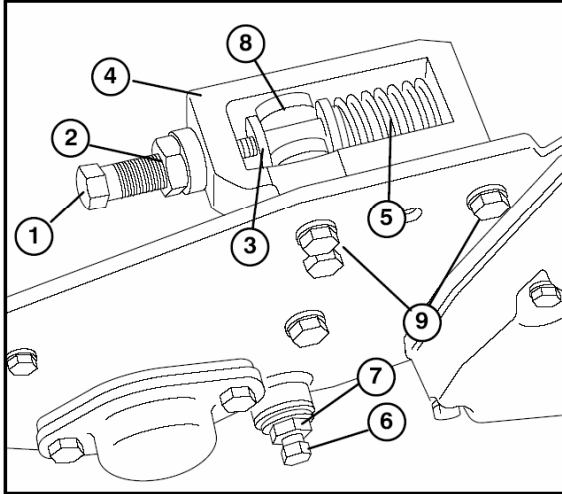


Figure 1

- | | |
|---------------------------|---------------------------|
| 1. Bedbar adjusting screw | 7. Jam nut |
| 2. Jam nut | 8. Bedbar (mounting ears) |
| 3. Thrust Washer | 9. Bedbar mounting screws |
| 4. Bedbar adjuster | |
| 5. Spring | |
| 6. Bedbar bolt | |

2. Loosen each bedbar adjusting screw until thrust washer bottoms out on frame adjuster (Fig. 1).

CAUTION: DO NOT REMOVE BEDBAR ADJUSTING SCREWS FROM BEDBAR ADJUSTERS. SPRINGS ARE UNDER TENSION AND COULD FLY UPWARD.

3. Using a spring compressor or clamp, compress springs on bedbar adjusting screws to free bedbar from bedbar adjusters (Fig. 1).

4. On each side of machine, loosen the jam nut securing bedbar bolt (Fig. 1)

5. Remove each bedbar bolt allowing bedbar to be pulled downward and removed from machine ((Fig. 1). Account for (4) washers on each bedbar bolt.

CAUTION: Spring under tension, keeps hands away from top of bedbar when removing bedbar from machine.

6. Remove (2) capscrews and washers securing each bedbar adjuster to sideplate (Fig. 1). Remove bedbar adjuster.

INSTALL BEDBAR ADJUSTER

1. Install new bedbar adjuster and spring detent to each sideplate with a 3/8-16 x 1" lg. capscrew and lockwasher and a 3/8-16 x 3/4" lg. capscrew and lockwasher (Fig. 2).

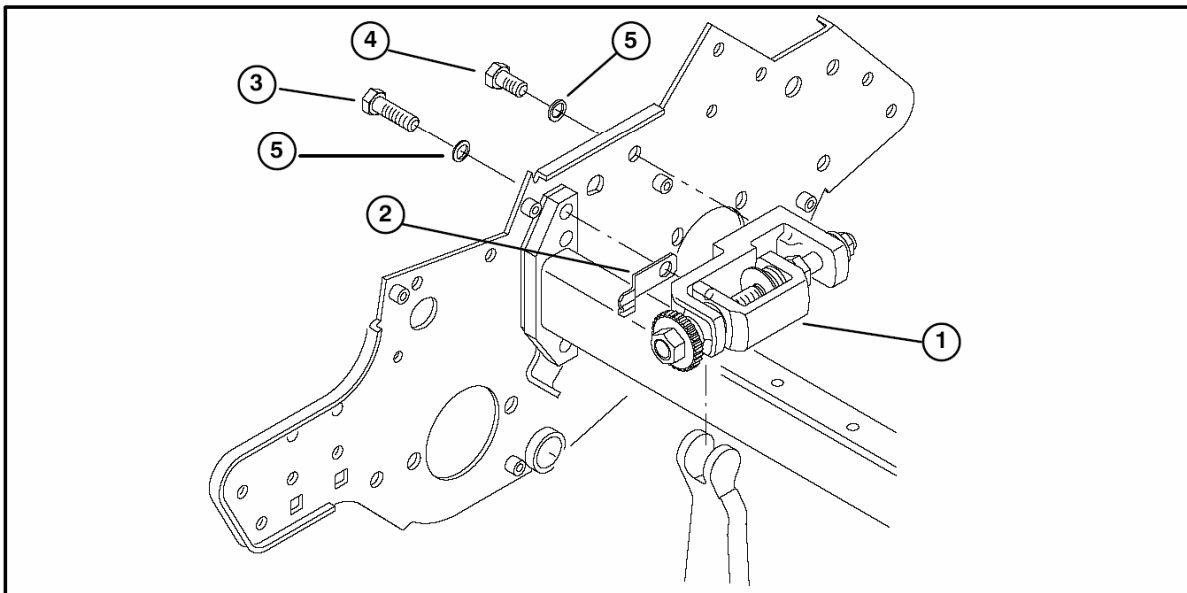


Figure 2

- | | |
|-------------------------------|---------------------------------|
| 1. Bedbar adjuster | 4. Capscrew (3/8-16 x 3/4" lg.) |
| 2. Spring detent | 5. Lockwasher |
| 3. Capscrew (3/8-16 x 1" lg.) | |

2. Install bedbar, positioning mounting ears between thrust washer and channel on bedbar adjuster.

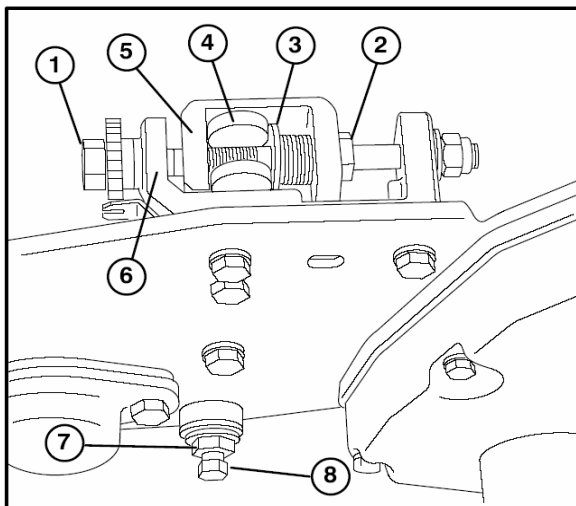


Figure 3

- | | |
|---------------------------|-------------------|
| 1. Bedbar adjusting screw | 5. Channel |
| 2. Spring tension screw | 6. Adjuster frame |
| 3. Thrust Washer | 7. Jam nut |
| 4. Bedbar | 8. Bedbar bolt |

2. Secure bedbar to each side plate with bedbar bolts (jam nuts on bolts) and (8) washers. A nylon washer is to be positioned on each side of side plate boss. Place a steel washer outside each of the nylon washers. Torque bedbar bolts to 240 - 320 in-lb. Tighten jam nuts until washers just rotate freely (Fig. 3).

ADJUST BEDBAR

1. Position machine on a flat, level work surface. Make sure reel contact is removed by rotating adjusting screws counterclockwise (Fig. 3).

2. Tilt mower back on handle to expose bedknife and reel.

3. On one end of front side of reel, insert a long strip of newspaper between reel and bedknife. While slowly rotating reel forward, tighten bedknife adjusting screw, (on same end of reel, one click at a time, until paper is pinched lightly, when inserted from the front, parallel to the bedknife, which results in a slight drag when paper is pulled.

Note: Each time adjusting screw is rotated one click, bedknife moves .0007" closer to reel. **DO NOT OVERTIGHTEN ADJUSTING SCREWS.**

4. Check for light contact at other end of reel using paper and adjust as required.

5. After adjustment is accomplished, check to see if reel can pinch paper when inserted from the front and cut paper when inserted at a right angle to the bedknife. It should be possible to cut paper with minimum contact between the bedknife and the reel blades. Should excessive reel drag be evident (more than 7 inch pounds) it will be either necessary to backlap or re-grind the cutting unit to achieve the sharp edges needed for precision cutting (see Toro reel sharpening manual).