



Auxiliary Valve Kit Groundsmaster® 3320 and 3280-D

Model No. 110-5670

Parts Catalog

Ordering Replacement Parts

To order replacement parts, please supply the part number, the quantity, and the description of each part desired.

Understanding Reference Numbers

Each identified part in an illustration has a reference number. The reference number for a part also appears in the parts list, along with other information about the part.

This catalog uses two special reference number formats, one to indicate parts in a service assembly and another to indicate the quantity of a given part in an illustration.

Service Assembly Reference Numbers

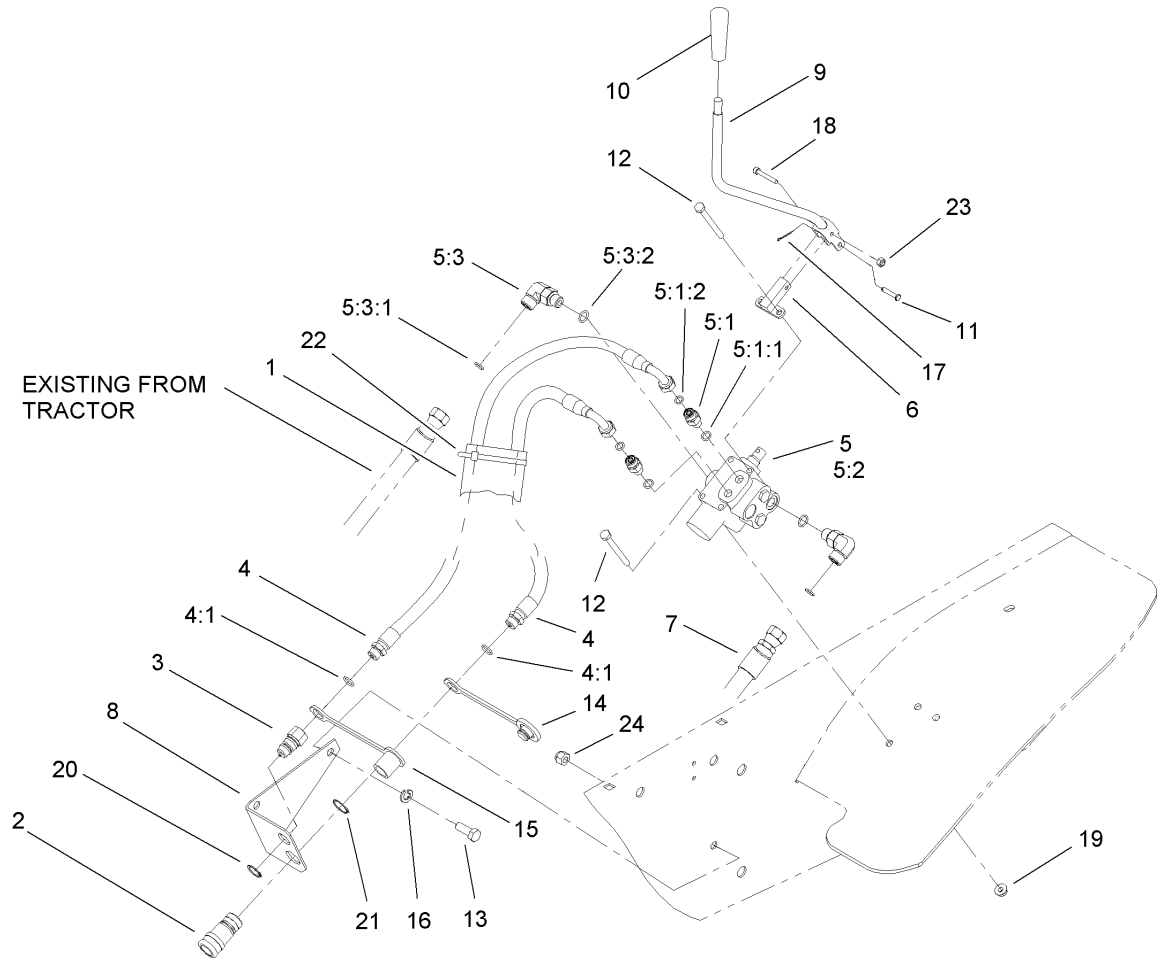
Parts in service assemblies have reference numbers in the form a:b. The a represents the reference number of the entire service assembly and the b represents a sequential number unique to each part within the service assembly.

For example, a wheel assembly might be identified by reference number 6, the tire by 6:1, the valve by 6:2, and the wheel by 6:3. When you order the assembly identified by reference number 6, you receive all parts identified by reference numbers 6:1, 6:2, and 6:3. However, you may also order any part individually. Reference numbers of this type appear in illustrations and in part lists.

Reference Numbers Indicating Quantity

In an illustration, if a reference number indicates more than one part, the reference number has the form nX y. The n represents the quantity of the part, the X is the multiplication symbol, and the y represents the reference number.

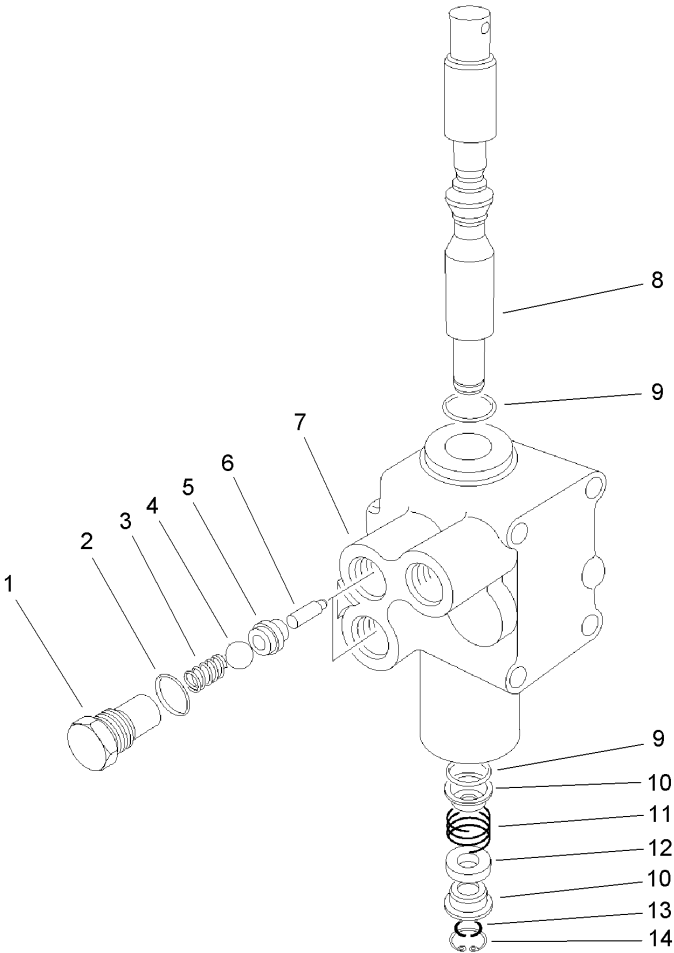
For example, in an illustration, the reference number 2X 37 means that two of the parts identified by reference number 37 are indicated.



Auxiliary Valve Assembly No. 110-5670

Ref	Part No.	Qty.	Description
1	56-7982	1	Sleeve-Protective
2	63-1220	1	Coupler-Disconnect, Quick
3	63-1240	1	Nipple-Disconnect, Quick
4	63-1270	2	RH Lift Wing Hose ASM
4:1	237-42	1	O-Ring
5	77-6810	1	Valve ASM
5:1	340-92	2	Fitting-HYD, Straight
5:1:1	237-78	1	O-Ring
5:1:2	237-21	1	O-Ring
5:2	43-1950-03	1	Valve-HYD
5:3	340-77	2	Fitting-HYD, 90 DEG
5:3:1	237-22	1	O-Ring
5:3:2	237-42	1	O-Ring
6	80-3360	1	Pivot Lever ASM
7	95-5986	1	Hose-HYD
8	95-6294-01	1	Bracket-Coupler, Quick
9	108-8668-03	1	Valve Lever ASM
10	233-39	1	Knob-Control
11	283-17	1	Pin-Clevis
12	321-14	3	Screw-HH
13	323-6	2	Screw-HH
14	353-984	1	Plug-Dust
15	353-985	1	Cap-Dust
16	3253-5	2	Washer-Lock

Ref	Part No.	Qty.	Description
17	3272-4	1	Pin-Cotter
18	3274-13	1	Screw-HSH
19	32128-33	3	Nut-HF
20	32151-79	1	Ring-Retaining
21	32151-83	1	Ring-Snap
22	3290-378	6	Tie-Cable
23	3296-2	1	Nut-Lock
24	3296-39	2	Nut-Lock, NI



Hydraulic Valve Assembly No. 43-1950-03

Ref	Part No.	Qty.	Description				
1	22-8330	2	Plug				
2	237-42	2	O-Ring				
3	22-8340	2	Spring				
4	22-8350	2	Ball				
5	22-8370	2	Seat-Valve				
6	22-8360	2	Pin				
7		1	Body (Not Serviced Separately)				
8	22-8420	1	Spool				
9	22-8500	2	O-Ring				
10	22-8380	2	Retainer				
11	22-8410	1	Spring				
12	23-3030	1	Spacer				
13	22-8480	1	Ring-Snap				
14	22-8490	1	Ring-Snap				

