



Spindle Kit

For Z Master® Mowers with 72in Cutting Unit

Model No. 112-5024

Installation Instructions

Note: Determine the left and right sides of the machine from the normal operating position.

Installation

Loose Parts

Use the chart below to verify that all parts have been shipped.

Step	Description	Qty.	Use
1	No parts required	–	Prepare the mower.
2	No parts required	–	Remove the existing spindle.
3	Spindle assembly Bolt, (3/8 x 3/4 inch) Blade bolt, (5/8 x 2–1/4 inches) Small curved washer Large curved washer (blade bolt)	1 3 1 3 1	Install the new spindle.
4	Template	1	Modify the belt covers.

Step

1

Preparing the Mower

No Parts Required

Procedure

1. Thoroughly clean mower deck. All debris must be removed to ensure spindle will fit properly against mower deck.
2. Repair all bent or damaged areas of mower deck and replace any missing parts.

Step

2

Removing the Existing Spindle

No Parts Required

Procedure

1. Remove the belt covers from the mower deck.
2. Remove the mower belt from the pulleys on the mower deck.
3. Remove the three bolts holding the deck pulley to the aluminum hub. Save the deck pulley and discard the bolts (Figure 1).
4. Raise the front of the machine and support it with a Z Stand® and jack stands.

5. Remove the blade from the spindle. Save the blade.
6. Remove the bolts holding the spindle to the mower deck. Save the nuts and bolts (Figure 1).

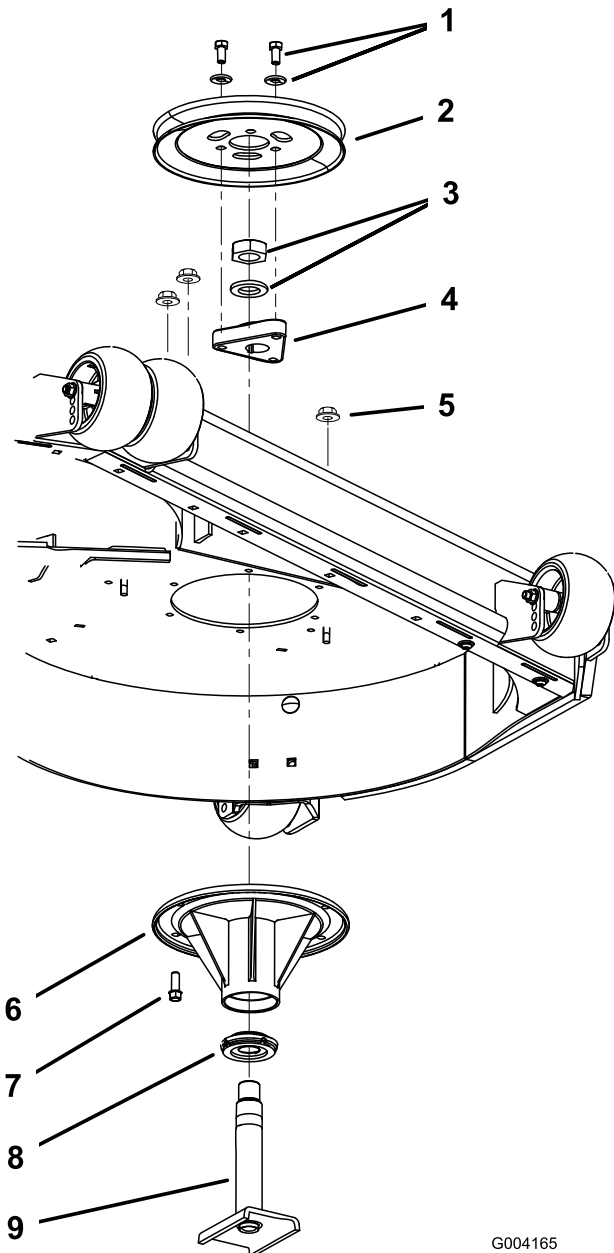


Figure 1

- | | |
|--------------------|---------------------|
| 1. Bolt and washer | 6. Spindle assembly |
| 2. Pulley | 7. Bolt (save) |
| 3. Nut and washer | 8. Spacer |
| 4. Aluminum hub | 9. Spindle shaft |
| 5. Locknut (save) | |

Step

3

Installing the New Spindle

Parts needed for this step:

1	Spindle assembly
3	Bolt, (3/8 x 3/4 inch)
1	Blade bolt, (5/8 x 2-1/4 inches)
3	Small curved washer
1	Large curved washer (blade bolt)

Procedure

1. Install the spindle assembly under the mower deck with the previously removed bolts (Figure 2).

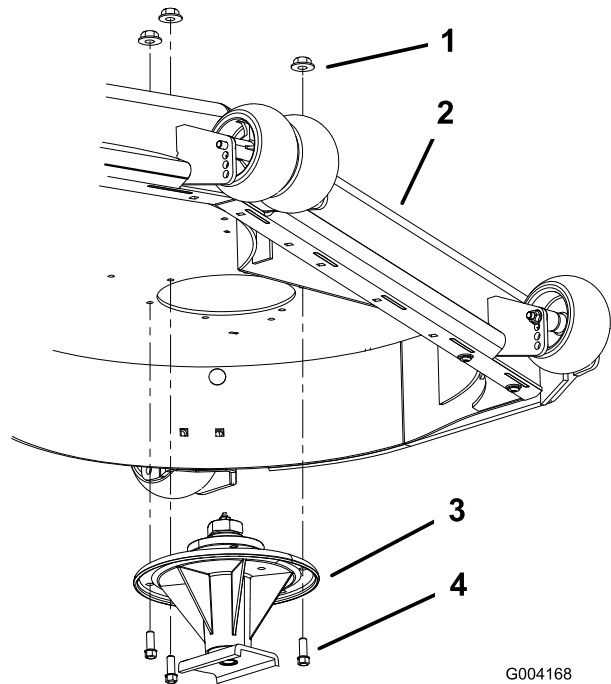


Figure 2

- | | |
|-----------------------|---------------------|
| 1. Locknut (existing) | 3. Spindle assembly |
| 2. Mower deck | 4. Bolt (existing) |

2. Align the three holes in the deck pulley with the three holes in the spindle hub and install 3 bolts (3/8 x 3/4 inch) and 3 small curved washers (Figure 3).

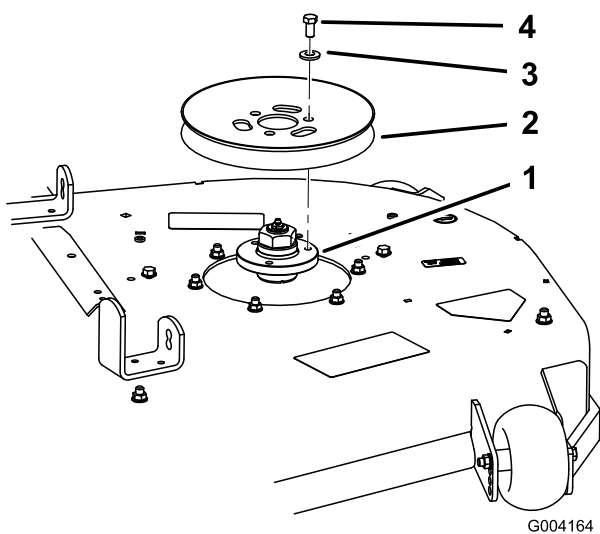


Figure 3

- | | |
|----------------|--------------------------|
| 1. Spindle hub | 3. Curved washer |
| 2. Pulley | 4. Bolt (3/8 x 3/4 inch) |

3. Install the blade to the spindle with a blade bolt (5/8 x 2-1/4 inches) and large curved washer (Figure 4).

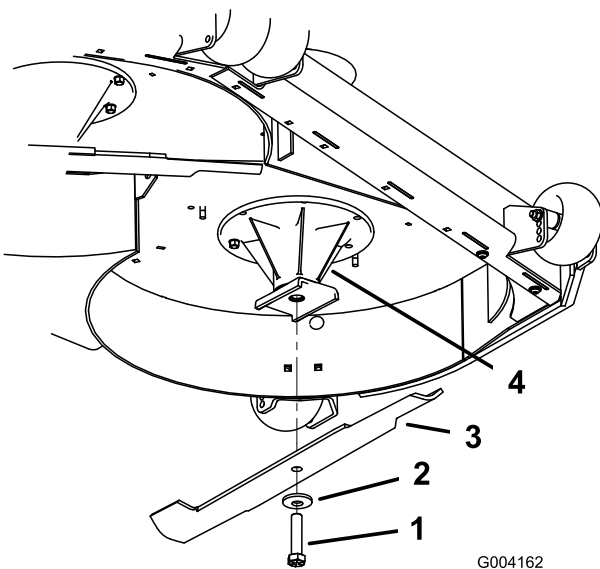


Figure 4

- | | |
|------------------------------------|---------------------|
| 1. Blade bolt (5/8 x 2-1/4 inches) | 3. Blade |
| 2. Large curved washer | 4. Spindle assembly |

Step 4

Modifying the Belt Covers

Parts needed for this step:

1	Template
---	----------

Procedure

1. Cut out the template in the back of these installation instructions. The template will be used to locate a hole that needs to be drilled.
2. On the bottom of the belt cover, align the template onto the belt cover as shown in Figure 5 .
3. Center punch and drill an 3/8 inch pilot hole into the belt cover at the correct location.
4. Drill an 1-1/8 inch hole into the belt cover at the correct location.
5. Repeat the previous steps for the second belt cover (Figure 5).
6. Install the belt covers and lower the machine onto the ground.

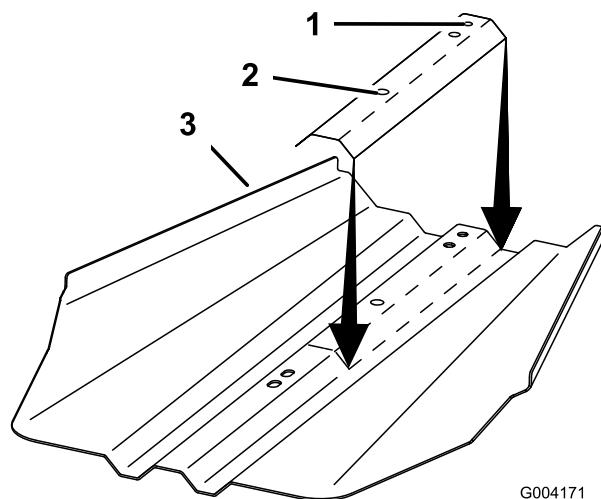
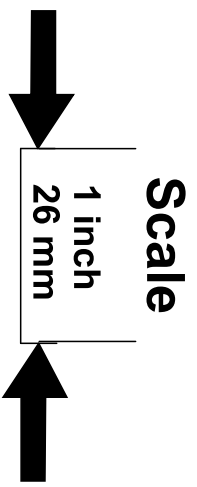


Figure 5

- | | |
|---|---------------------------|
| 1. Align holes in template with holes in belt cover | 3. Belt cover upside down |
| 2. Drill 1-1/8 inch hole here | |



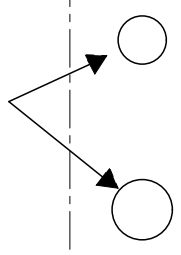
Cut out template here



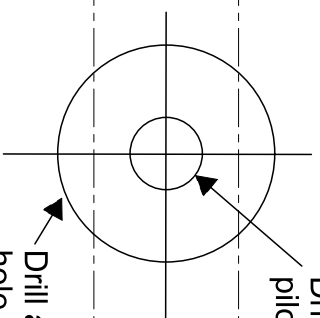
Template

Fold template along this line

Fold template along this line



Align two holes in belt cover here



Drill a 3/8 inch pilot hole here

Drill a 1-1/8 inch hole here

Cut out template here





Count on it.