



Tru Trak[®] Sulky Fixed-Deck Mid-Size Mowers

Model No. 30109 - 260000001 and up.

Parts Catalog

Ordering Replacement Parts

To order replacement parts, please supply the part number, the quantity, and the description of each part desired.

Understanding Reference Numbers

Each Identified part in an illustration has a reference number. The reference number for a part also appears in the parts list, along with other information about the part.

This catalog uses two special reference number formats, one to indicate parts in a service assembly and another to indicate the quantity of a given part in an illustration.

Service Assembly Reference Numbers

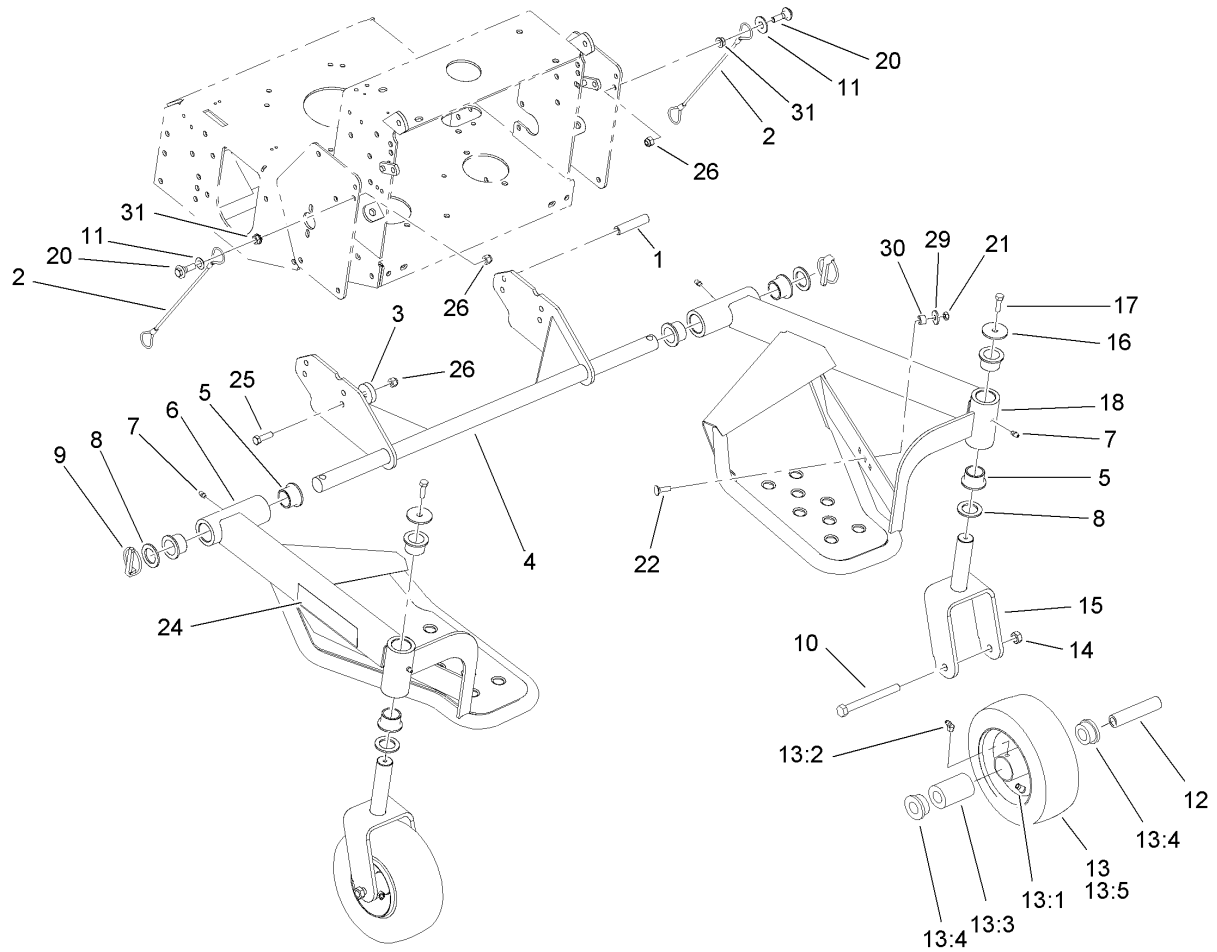
Parts in service assemblies have reference numbers in the form a:b. The a represents the reference number of the entire service assembly and the b represents a sequential number unique to each part within the service assembly.

For example, a wheel assembly might be identified by reference number 6, the tire by 6:1, the valve by 6:2, and the wheel by 6:3. When you order the assembly identified by reference number 6, you receive all parts identified by reference numbers 6:1, 6:2, and 6:3. However, you may also order any part individually. Reference numbers of this type appear in illustrations and in part lists.

Reference Numbers Indicating Quantity

In an illustration, if a reference number indicates more than one part, the reference number has the form nX y. The n represents the quantity of the part, the X is the multiplication symbol, and the y represents the reference number.

For example, in an illustration, the reference number 2X 37 means that two of the parts identified by reference number 37 are indicated.



Sulky Assembly

Ref	Part No.	Qty.	Description
1	106-0877	4	Spacer-Shield
2	110-4896	2	Lanyard
3	106-0861	4	Spacer
4	106-0866-01	1	Axle-Sulky
5	94-1291	8	Bushing
6	104-8407-01	1	LH Floor Plate ASM
7	302-5	4	Fitting-Grease
8	3-6781	4	Washer-Thrust
9	283-71	2	Pin-Lynch
10	325-19	2	Screw-HH
11	3256-6	2	Washer-Flat
12	100-6453	2	Bushing-Spanner
13	100-6451	2	Caster Wheel ASM
13:1	232-27	1	Stem-Valve
13:2	302-11	1	Fitting-Lube, 45 DEG
13:3	83-4740	1	Bearing
13:4	62-5580	2	Bearing-Outside
13:5	100-6452	1	Tire-Tubeless
14	32153-5	2	Nut-Lock, Side
15	104-8402-01	2	Castor ASM
16	63-7400	2	Washer-Rebound
17	322-16	2	Screw-HH
18	104-2743-01	1	RH Floor Plate ASM
20	614672	2	Bolt-Shoulder

Ref	Part No.	Qty.	Description
21	3296-47	2	Nut-Lock, NI
22	3230-2	2	Bolt-CARR
24	104-8477	2	Decal
25	323-7	4	Screw-HH
26	3296-39	6	Nut-Lock, NI
29	1-603716	2	Washer-Friction
30	98-4695	2	Spacer
31	3290-357	2	Nut-HHF, Whiz