



## CCR™ Powerlite® Snowthrower

Model No. 38182 - 270000001 and up.

### Parts Catalog

---

#### Ordering Replacement Parts

To order replacement parts, please supply the part number, the quantity, and the description of each part desired.

#### Understanding Reference Numbers

Each identified part in an illustration has a reference number. The reference number for a part also appears in the parts list, along with other information about the part.

This catalog uses two special reference number formats, one to indicate parts in a service assembly and another to indicate the quantity of a given part in an illustration.

#### Service Assembly Reference Numbers

Parts in service assemblies have reference numbers in the form a:b. The a represents the reference number of the entire service assembly and the b represents a sequential number unique to each part within the service assembly.

For example, a wheel assembly might be identified by reference number 6, the tire by 6:1, the valve by 6:2, and the wheel by 6:3. When you order the assembly identified by reference number 6, you receive all parts identified by reference numbers 6:1, 6:2, and 6:3. However, you may also order any part individually. Reference numbers of this type appear in illustrations and in part lists.

#### Reference Numbers Indicating Quantity

In an illustration, if a reference number indicates more than one part, the reference number has the form nX y. The n represents the quantity of the part, the X is the multiplication symbol, and the y represents the reference number.

For example, in an illustration, the reference number 2X 37 means that two of the parts identified by reference number 37 are indicated.

# Contents

Description	Page	Description	Page
Rotor Drive Assembly	..... 3	Handle and Lower Shroud Assembly	..... 8
Housing, Upper Shroud and Chute Assembly	..... 4	Carburetor Assembly No. 640086 Tecumseh Hsk635 1723c	..... 9
Rotor Assembly	..... 5	Engine Assembly Tecumseh Hsk635 1723c	..... 10
Engine, Rotor Housing and Sideplate Assembly	..... 6	Recoil Starter Assembly No. 590743 Tecumseh Hsk635 1723c	..... 12
120 Volt Starter Assembly No. 105-2953	..... 7		

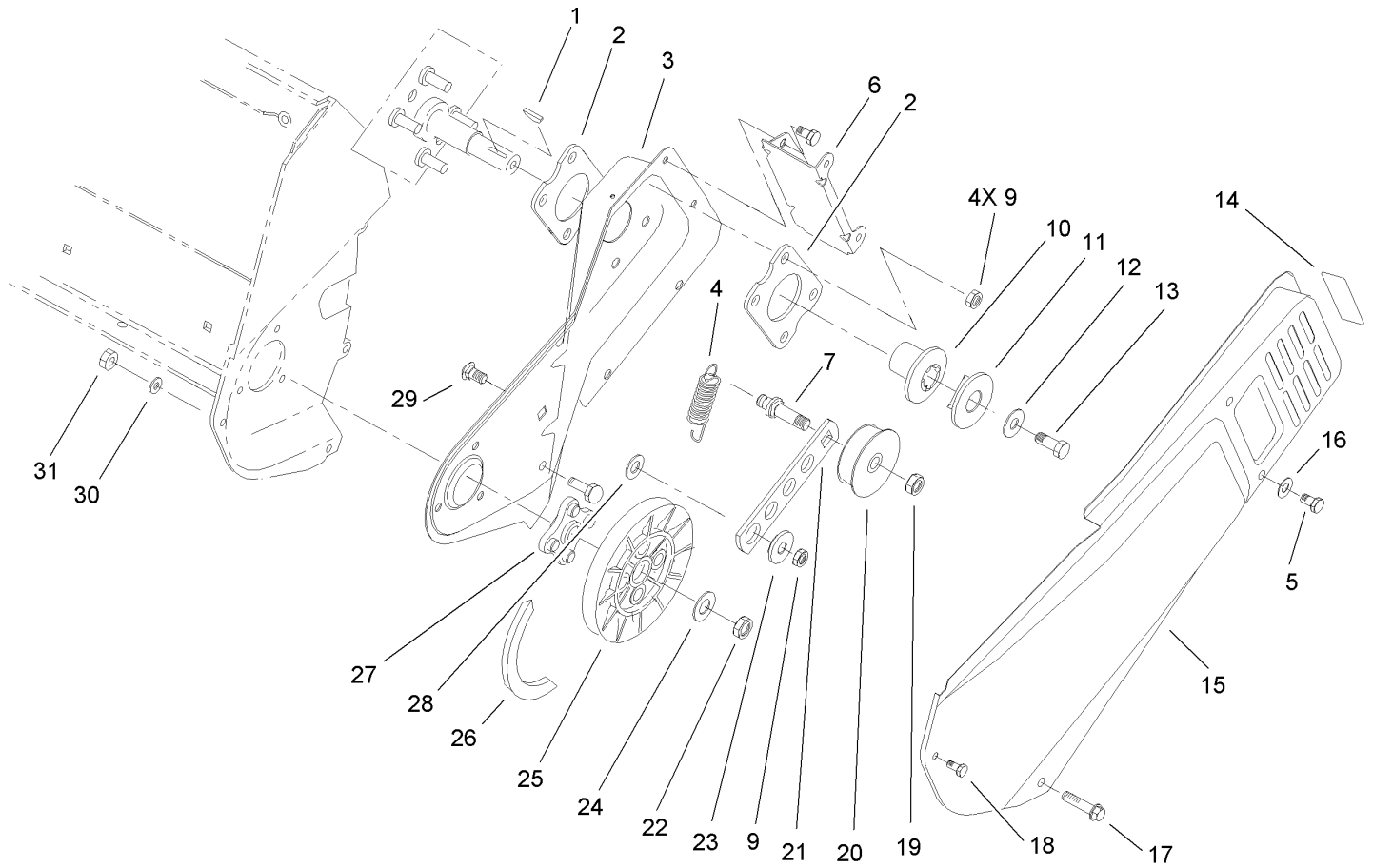
## Part Description Abbreviations

Part descriptions in this catalog may include the following abbreviations.

AR. .... as required	HYD. .... hydraulic
ASM. .... assembly	LH. .... left hand
BBC. .... blade brake clutch	NI. .... nylon insert
CARR. .... carriage	NPTF. .... national pipe thread fine
DEG. .... degrees	PFH. .... phillips flat head
EXT. .... external	PPH. .... phillips pan head
FH. .... flat head	PPHTF. .... phillips pan head thread forming
GA. .... gauge	PRH. .... phillips round head
HD. .... heavy-duty	PTH. .... phillips truss head
HF. .... hex flange	PTO. .... power-take-off
HH. .... hex head	RH. .... right hand
HHF. .... hex head flange	ROPS. .... roll-over protection system
HHFTF. .... hex head flange thread forming	SFH. .... slotted fillister head
HJ. .... hex jam	SHH. .... slotted hex head
HLH. .... hex lag head	SHWH. .... slotted hex washer head
HOC. .... height-of-cut	SPH. .... slotted pan head
HSBH. .... hex socket button head	SQH. .... square head
HSFH. .... hex socket flat head	SRH. .... slotted round head
HSH. .... hex socket head	STD. .... standard
HWH. .... hex washer head	TAP. .... self tapping
HWHTF. .... hex washer head thread forming	TTH. .... torx truss head

## Footnotes

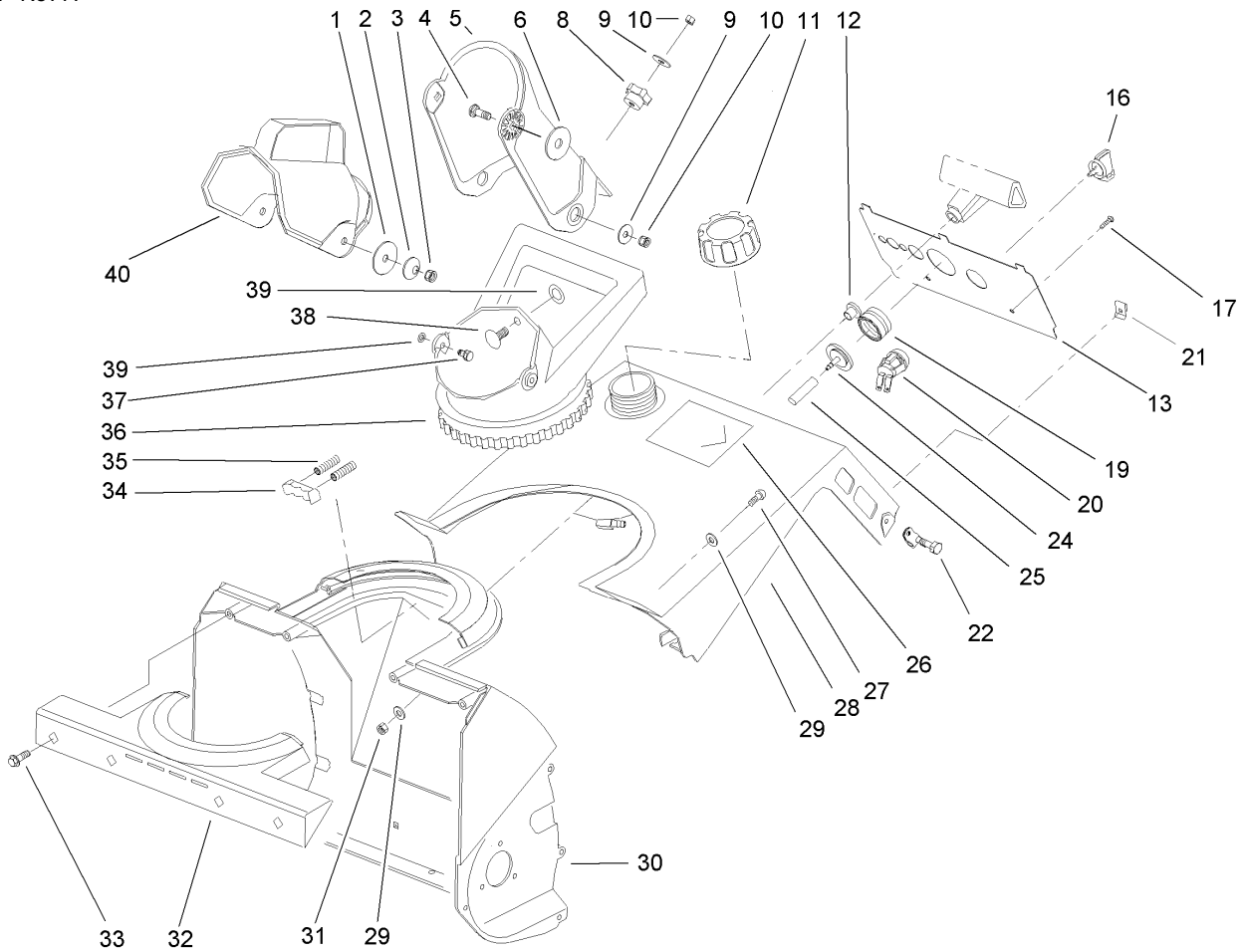
- ❶ Not illustrated
- ❷ Obtain from your local Tecumseh dealer
- ❸ Not serviced separately



## Rotor Drive Assembly

Ref	Part No.	Qty.	Description
1	3257-3	1	Key-Woodruff
2	71-5290-03	2	Plate-Engine
3	95-7945-03	1	Sideplate-LH
4	75-9020	1	Spring-Extension
5	32144-4	4	Screw-HWH
6	75-8870-03	1	Bracket-Cover, Belt
7	75-8720	1	Pin-Idler
9	3296-29	5	Nut-Lock, NI
10	71-5050	1	Hub-Half Sheave
11	71-5060	1	Cap-Half Sheave
12	3256-71	1	Washer-Flat
13	3235-6	1	Screw-HH
14	104-2767	1	Decal-Warning
15	75-8830-03	1	Cover-Belt
16	3256-1	2	Washer-Flat
17	46-8094	3	Screw-Plastite
18	32105-23	1	Screw
19	3296-59	1	Nut-Lock, NI
20	71-5260	1	Pulley-Idler
21	75-9050	1	Arm-Idler
22	3296-38	1	Nut-Lock, NI
23	75-8700	1	Bushing-Idler
24	3256-25	1	Washer-Flat
25	75-8750	1	Pulley-Driven

Ref	Part No.	Qty.	Description
26	75-9010	1	V-Belt
27	75-8740	1	Hub
28	25-5640	1	Washer
29	3230-23	1	Screw-CARR
30	3256-14	1	Washer-Flat
31	3296-2	1	Nut-Lock

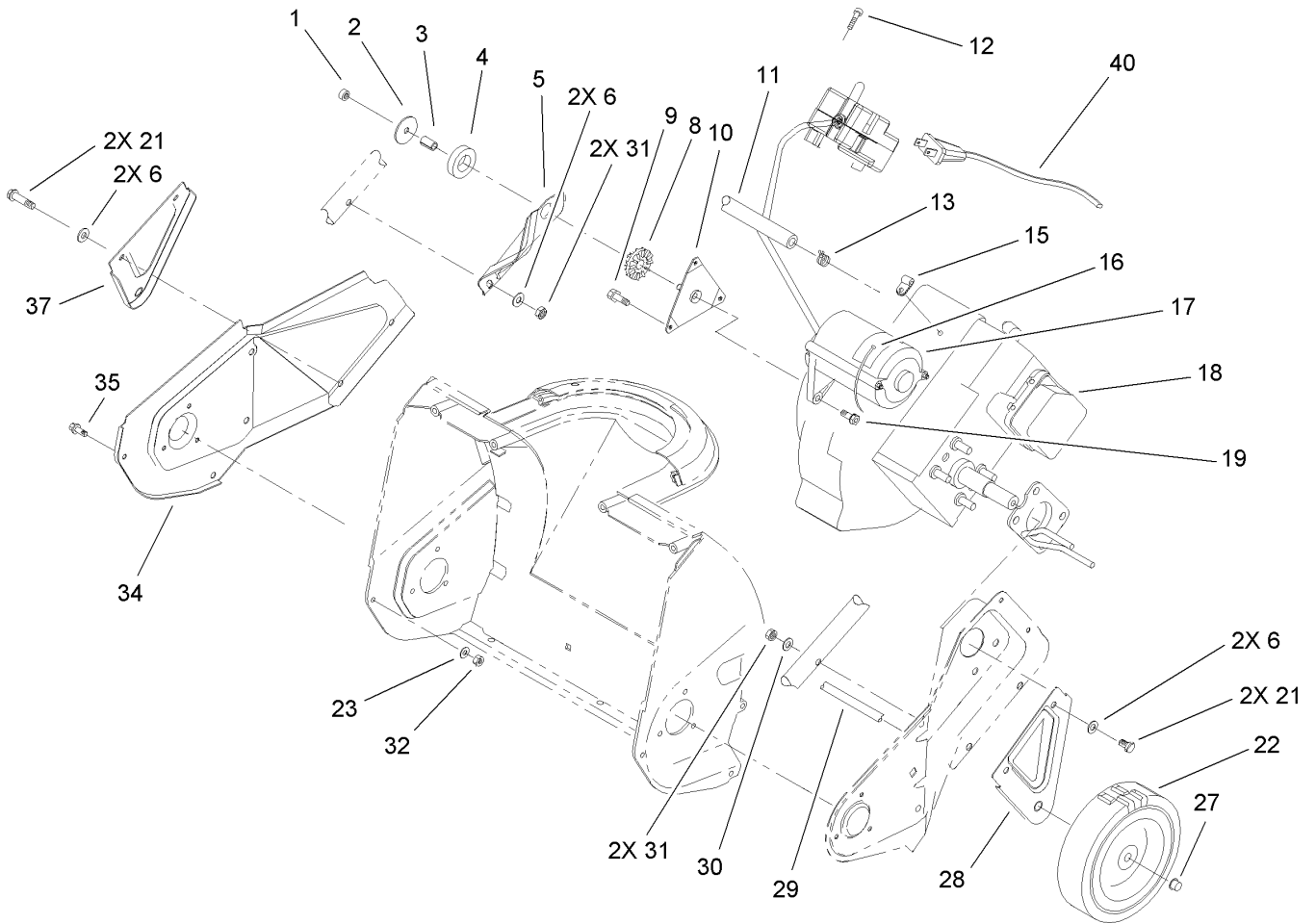


## Housing, Upper Shroud and Chute Assembly

Ref	Part No.	Qty.	Description
1	3256-68	2	Washer-Flat
2	3290-340	2	Washer-Belleville
3	3296-29	2	Nut-Lock, NI
4	3230-2	2	Bolt-CARR
5	112-6649	1	Chute
6	95-1905	2	Washer-Rubber
8	233-67	1	Knob-Chute
9	3256-81	2	Washer-Flat
10	3296-56	2	Nut-Lock, NI
11	104-4133	1	Gas Cap ASM
12	23-7470	1	Guide-Rope, Starter
13	112-8101	1	Control Panel-Silkscreened
16	63-8360	1	Key-Ignition
17	32144-53	2	Screw-SHWH
19	66-7460	1	Bulb-Primer
20	40-5940	1	Switch
21	49-1490	2	Nut
22	32144-89	2	Screw-Forming, Thread
24	44-2750	1	Body-Primer
25	44-3173	1	Hose-Primer
26	108-5082	1	Decal-Shroud, Ccr Powerlite Elec. Start
27	3250-32	2	Screw-PPH
28	105-2994	1	Shroud-Tank, Gas Upper

Ref	Part No.	Qty.	Description
29	3256-1	4	Washer-Flat
30	75-8660	1	Housing
31	3296-42	2	Nut-Lock, NI
32	75-8650	1	Retainer-Chute
33	46-8094	4	Screw-Plastite
34	75-9160	1	Detent-Chute
35	75-9170	2	Spring-Compression
36	75-8670	1	Handle-Chute
37	321-3	2	Screw-HH
38	3229-11	1	Screw-CARR
39	32115-15	3	Pushnut-Retainer, Bolt
40	75-8770	1	Deflector-Chute





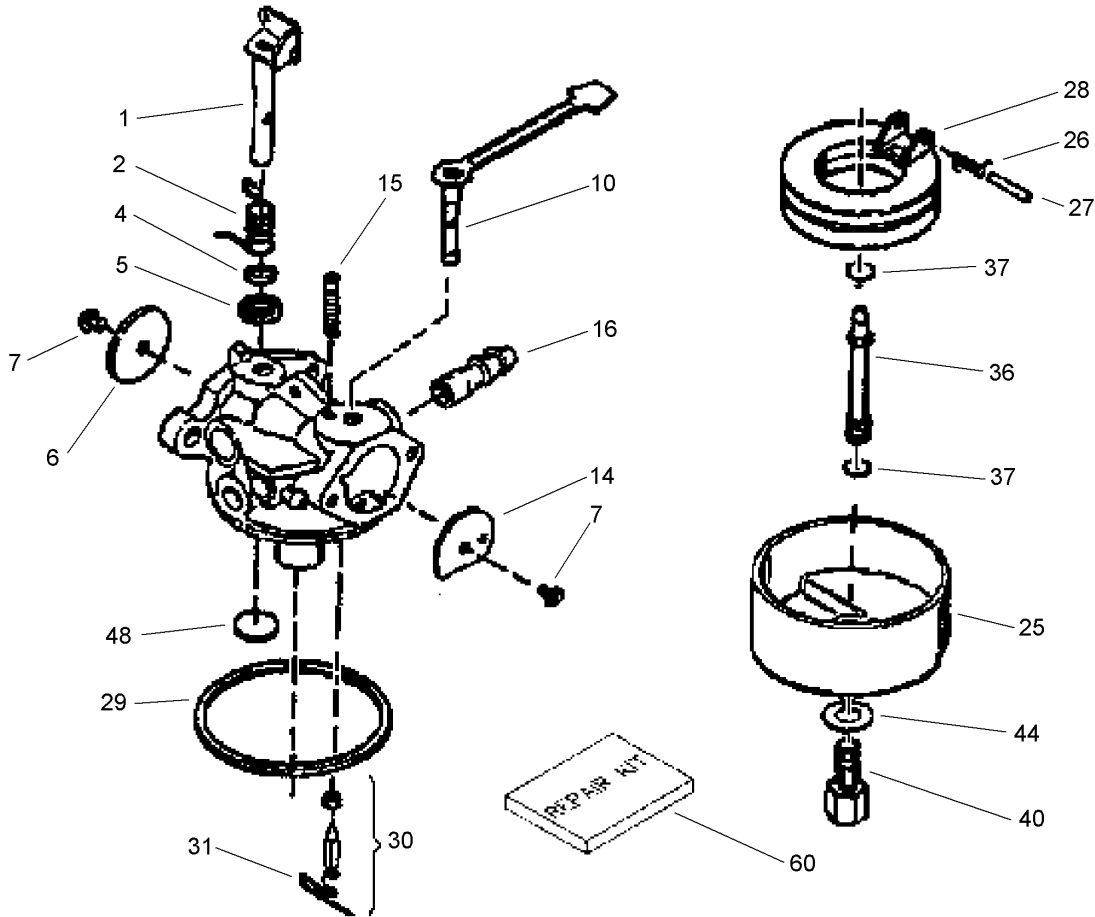
## Engine, Rotor Housing and Sideplate Assembly

Ref	Part No.	Qty.	Description
1	3296-56	1	Nut-Lock, NI
2	3256-58	1	Washer-Flat
3	80-0650	1	Spacer-Tubular
4	95-1903	1	Ring-Isolator
5	75-8980-03	1	Bracket-Support, Engine
6	3256-1	6	Washer-Flat
8	75-9100	1	Bushing-Isolator
9	94-2789	3	Screw
10	92-6012	1	Bracket And Stud ASM
11	110-3447	1	Hose-Fuel
12	32144-27	3	Screw-Plastite
13	2412-98	2	Clamp
15	2412-91	1	Clamp
16	250-7	1	Tie-Cable
17	105-2953	1	Starter ASM (120 Volt)
18		1	Engine-Tecumseh, Hsk635-1723C
19	80-0700	2	Screw
21	321-10	4	Screw-HH
22	23-3250	2	Wheel
23	3256-14	1	Washer-Flat
27	3290-320	2	Retainer-Push On
28	75-8910-03	1	Bracket-Wheel, LH
29	27-0062	1	Axle

Ref	Part No.	Qty.	Description
30	3-7501	2	Washer
31	3296-42	4	Nut-Lock, NI
32	3296-2	1	Nut-Lock
34	75-8820-03	1	Plate-Side, RH
35	32105-23	1	Screw
35	46-8094	3	Screw-Plastite
37	75-8900-03	1	Bracket-Wheel, RH
40	106-4741	1	Cord-Electric





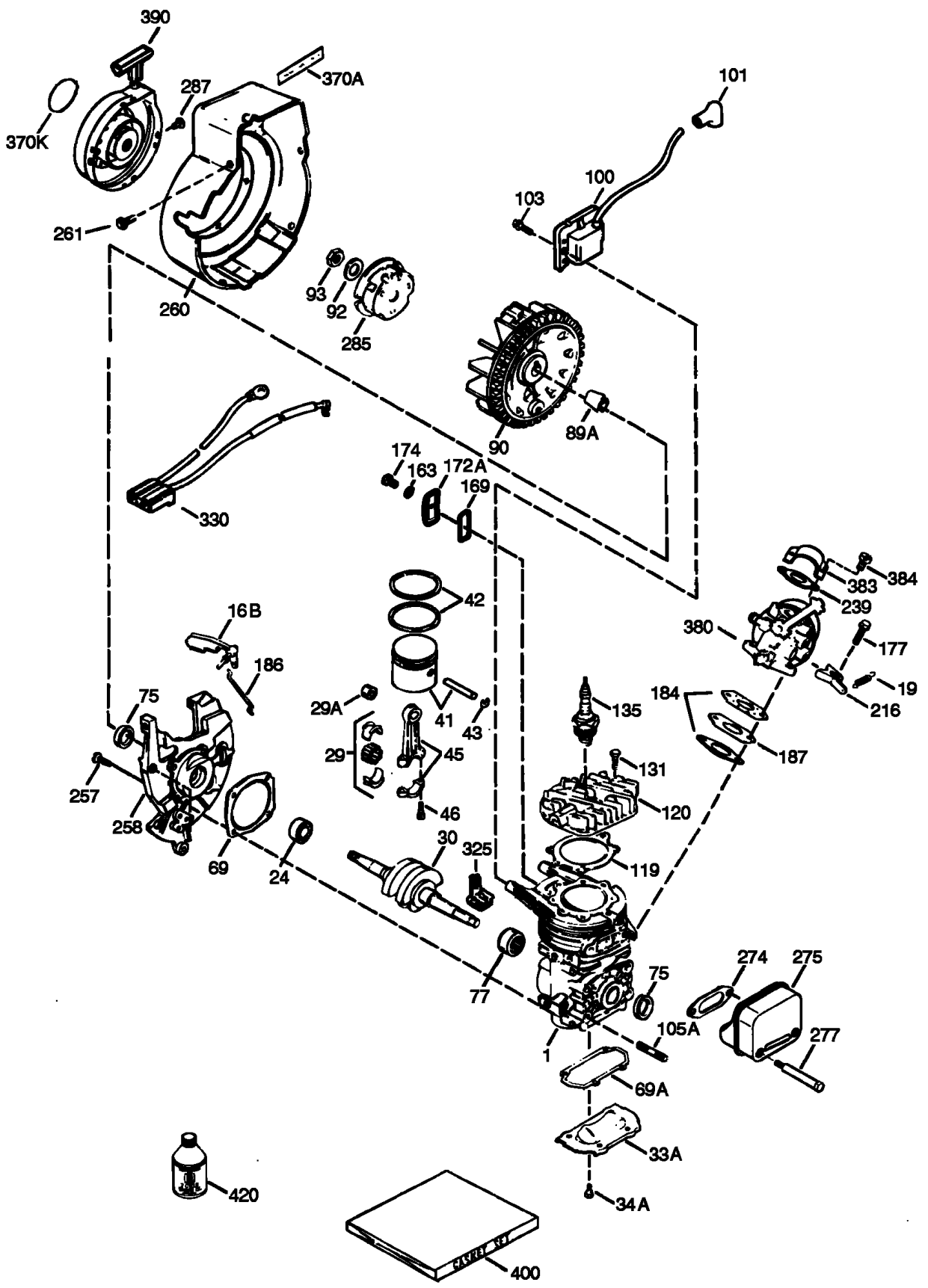


## Carburetor Assembly No. 640086 Tecumseh Hsk635 1723c

Ref	Part No.	Qty.	Description
●0	640086A	1	Carburetor (Incl. 184 Of Engine Parts List)
●1	632166A	1	Throttle Shaft And Lever ASM
●2	632169	1	Spring-Trottle, Return
●4	631184	1	Washer-Seal, Dust
●5	631183	1	Seal-Dust, Throttle
●6	631616	1	Throttle-Shutter
●7	650506	2	Screw-Shutter
●10	632553	1	Choke Shaft And Lever ASM
●14	31837	1	Shutter-Choke
●15	630735	1	Spring-Positioning, Choke
●16	632164	1	Fitting-Fuel
●25	631867	1	Bowl-Float
●26	632386	1	Spring-Float, Dampening
●27	631024	1	Shaft-Float
●28	632019	1	Float
●29	631028	1	O Ring-Bowl, Float
●30	631021	1	Inlet Needle, Seat And Clip (Incl. 31)
●31	631022	1	Clip-Spring
●36	640080	1	Tube-Nozzle, Main
●37	632547	2	O Ring-Tube, Main Nozzle
●40	640301	1	Nut-Bowl, High Speed
●44	27110A	1	Washer-Bowl

Ref	Part No.	Qty.	Description
●48	631027	1	Plug-Welch, Atmospheric Vent
●60	632760	1	Repair Kit

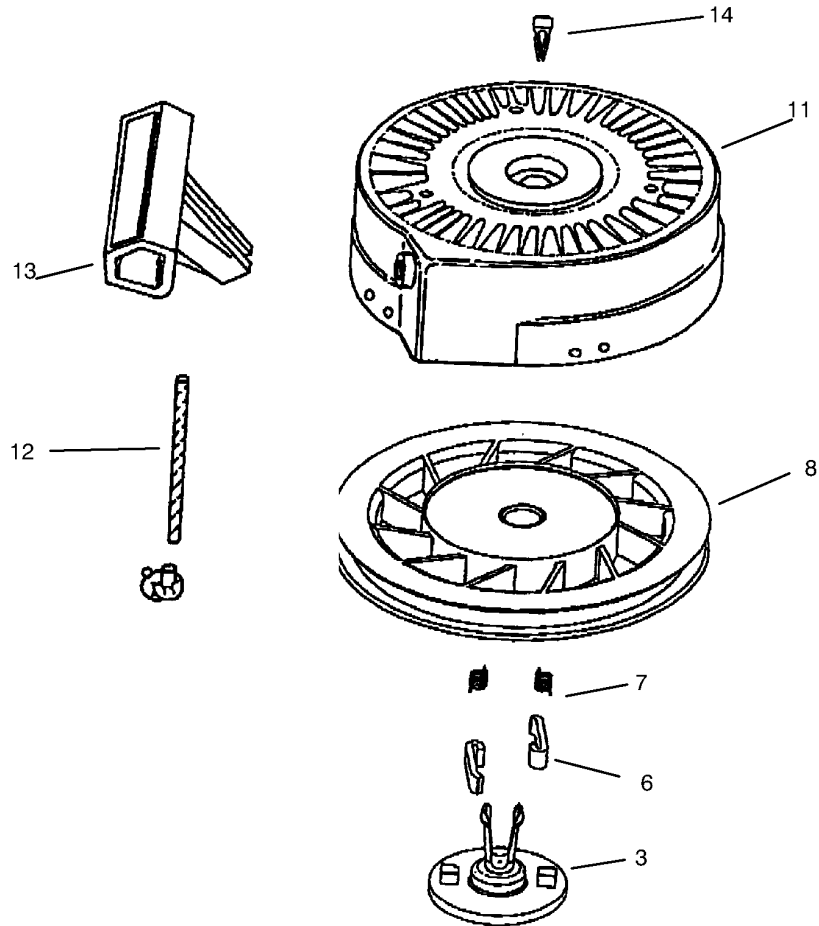
# Engine Assembly Tecumseh Hsk635 1723c



# Engine Assembly

## Tecumseh Hsk635 1723c

Ref	Part No.	Qty.	Description	Ref	Part No.	Qty.	Description
③1	0	1	Spec Sv540-0019	③285	590551A	1	Cup-Starter
③16B	490291A	1	Vane-Air	③287	650926	3	Screw (8-32 X 21/64)
③19	570707	1	Spring-Extention	③325	29443	1	Clip-Wire
③24	530110	1	Bearing-Ball	③330	611131A	1	Harness-Wire
③29	530150	1	Needle Bearing And Liner Set (37 Needles)	③370A	36261	1	Decal-Lubrication
③29A	530104A	1	Bearing-Cartridge	③370K	36695	1	Decal-Tecumseh (Logo For Top Of Recoil Starter)
③30	290602	1	Crankshaft	③380	640086A	1	Carburetor
③33A	570644	1	Plate-Cover	③383	570434	1	Baffle-Carburetor
③34A	650579	4	Screw, T-25, 10-24 X 1/2"	③384	650431	2	Screw, T-25, 10-32 X 5/8"
③41	310283A	1	Piston & Pin ASM Piston & Pin Ass'y. (Incl. Ref. #43)	③390	590743	1	Rewind Starter ASM
③42	310289	2	Ring Set	③400	510324B	1	Gasket Set
③43	310167	2	Ring-Retaning	③420	730227B	1	2-Cycle Oil (8 Oz.)
③45	310235B	1	Connecting Rod Ass'y. Piston & Pin ASM (Incl. Ref. #29, 29A, & 46)				
③46	650633	2	Bolt-Rod, Connecting				
③69	510292A	1	Gasket-Cover, Cylinder				
③69A	510323A	1	Gasket-Plate, Cover				
③75	510319	2	Seal-Oil				
③77	530105	1	Bearing-Cartridge				
③89A	611032	1	Sleve-Adapter				
③90	611066	1	Flywheel				
③92	650815	1	Washer-Belleville				
③93	650390	1	Nut-Flywheel				
③100	34443B	1	Solid State Ignition (Incl. Ref. #101)				
③101	610118	1	Cover-Spark Plug				
③103	651007	2	Screw (T-15 10-24X15/16)				
③105A	650796	4	Stud				
③119	510274A	1	Gasket-Cylinder Head				
③120	250240B	1	Head-Cylinder				
③131	650477	5	Screw, T-30, 1/4-20 X 3/4				
③135	611049	1	Plug-Spark, Resister (Rcj8Y)				
③163	650838	1	Washer				
③169	510325A	1	Cover-Compression, Release				
③172A	570708	1	Cover-Compression, Release				
③174	650579	1	Screw, T-25, 10-24 X 1/2"				
③177	650959	2	Screw, 5/32, 1/4-20 X 1"				
③184	510326A	2	Gasket-Carburetor				
③186	490322	1	Governor-Link				
③187	570438A	1	Spacer				
③216	570645	1	Lever-Adjusting, Rpm				
③239	35815	1	Gasket-Air Cleaner				
③257	650911	4	Screw, T-30, 1/4-20 X 5/8"				
③258	350422	1	Blower Housing Base (Incl. Ref. #75)				
③260	350437	1	Housing-Blower				
③261	650737	4	Screw, 1/4-20 X 1/2"				
③274	510207A	1	Gasket-Exhaust				
③275	390332	1	Muffler (Incl. Ref. #274 And 277)				
③277	650869	2	Screw, 1/4-20 X 2-3/4"				



## Recoil Starter Assembly No. 590743 Tecumseh Hsk635 1723c

Ref	Part No.	Qty.	Description				
1	590743	1	Rewind Starter ASM				
3	590740	1	Retainer				
6	590616	2	Dog-Starter				
7	590617	2	Spring-Dog				
8	590645A	1	Pulley And Rewind Spring Assembly				
11	590643A	1	Starter Housing ASM				
12	590535	1	Rope-Starter (98X9/64 Dia) (Cut To Length)				
13	590701	1	Handle-Starter				
14	590760	1	Clip-Spring				

## NOTES

# NOTES

# NOTES

