



CCR™ 3650 GTS® Snowthrower

Model No. 38517 - 270010001 and up.

Parts Catalog

Ordering Replacement Parts

To order replacement parts, please supply the part number, the quantity, and the description of each part desired.

Understanding Reference Numbers

Each identified part in an illustration has a reference number. The reference number for a part also appears in the parts list, along with other information about the part.

This catalog uses two special reference number formats, one to indicate parts in a service assembly and another to indicate the quantity of a given part in an illustration.

Service Assembly Reference Numbers

Parts in service assemblies have reference numbers in the form a:b. The a represents the reference number of the entire service assembly and the b represents a sequential number unique to each part within the service assembly.

For example, a wheel assembly might be identified by reference number 6, the tire by 6:1, the valve by 6:2, and the wheel by 6:3. When you order the assembly identified by reference number 6, you receive all parts identified by reference numbers 6:1, 6:2, and 6:3. However, you may also order any part individually. Reference numbers of this type appear in illustrations and in part lists.

Reference Numbers Indicating Quantity

In an illustration, if a reference number indicates more than one part, the reference number has the form nX y. The n represents the quantity of the part, the X is the multiplication symbol, and the y represents the reference number.

For example, in an illustration, the reference number 2X 37 means that two of the parts identified by reference number 37 are indicated.

Contents

Description	Page	Description	Page
Rotor Housing and Scraper Assembly 3	Handle Assembly 10
Impeller Drive Assembly 4	Cylinder, Piston and Connecting Rod	
Chute Assembly 5	Assemblies Briggs and Stratton 084232-0121- E8 11
Rotor Assembly 6	Muffler, Carburetor and Intake Manifold	
Engine, Gas Tank and Frame Assembly 7	Assembly Briggs and Stratton 084232-0121-E8 12
Shroud and Control Panel Assembly 8	Flywheel, Blower Housing and Starter	
Upper Shroud Assembly No. 110-2188 9	Assemblies Briggs and Stratton 084232-0121- E8 13
		Attachments and Accessories List 14

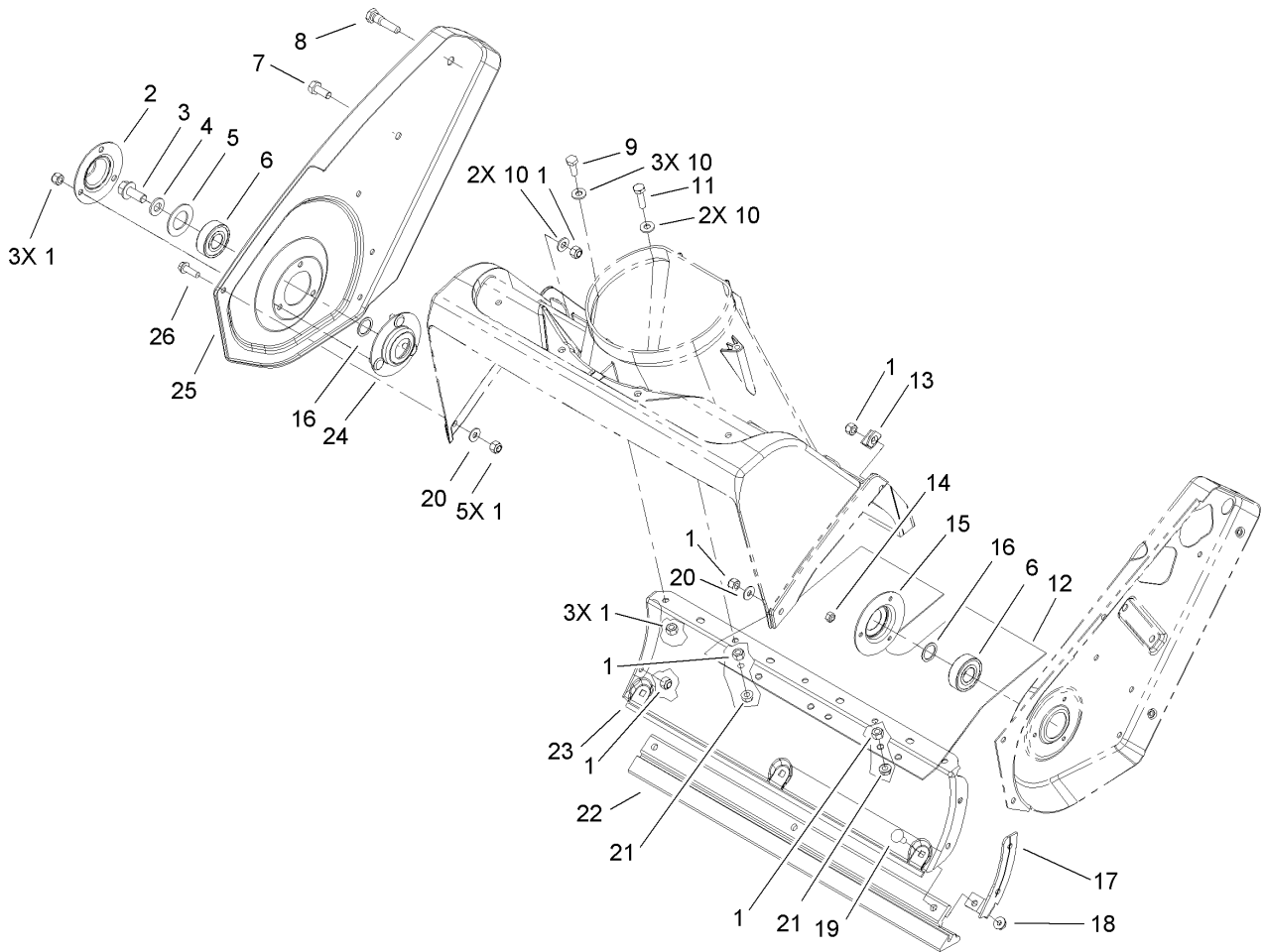
Part Description Abbreviations

Part descriptions in this catalog may include the following abbreviations.

AR. as required	HYD. hydraulic
ASM. assembly	LH. left hand
BBC. blade brake clutch	NI. nylon insert
CARR. carriage	NPTF. national pipe thread fine
DEG. degrees	PFH. phillips flat head
EXT. external	PPH. phillips pan head
FH. flat head	PPHTF. phillips pan head thread forming
GA. gauge	PRH. phillips round head
HD. heavy-duty	PTH. phillips truss head
HF. hex flange	PTO. power-take-off
HH. hex head	RH. right hand
HHF. hex head flange	ROPS. roll-over protection system
HHFTF. hex head flange thread forming	SFH. slotted fillister head
HJ. hex jam	SHH. slotted hex head
HLH. hex lag head	SHWH. slotted hex washer head
HOC. height-of-cut	SPH. slotted pan head
HSBH. hex socket button head	SQH. square head
HSFH. hex socket flat head	SRH. slotted round head
HSH. hex socket head	STD. standard
HWH. hex washer head	TAP. self tapping
HWHTF. hex washer head thread forming	TTH. torx truss head

Footnotes

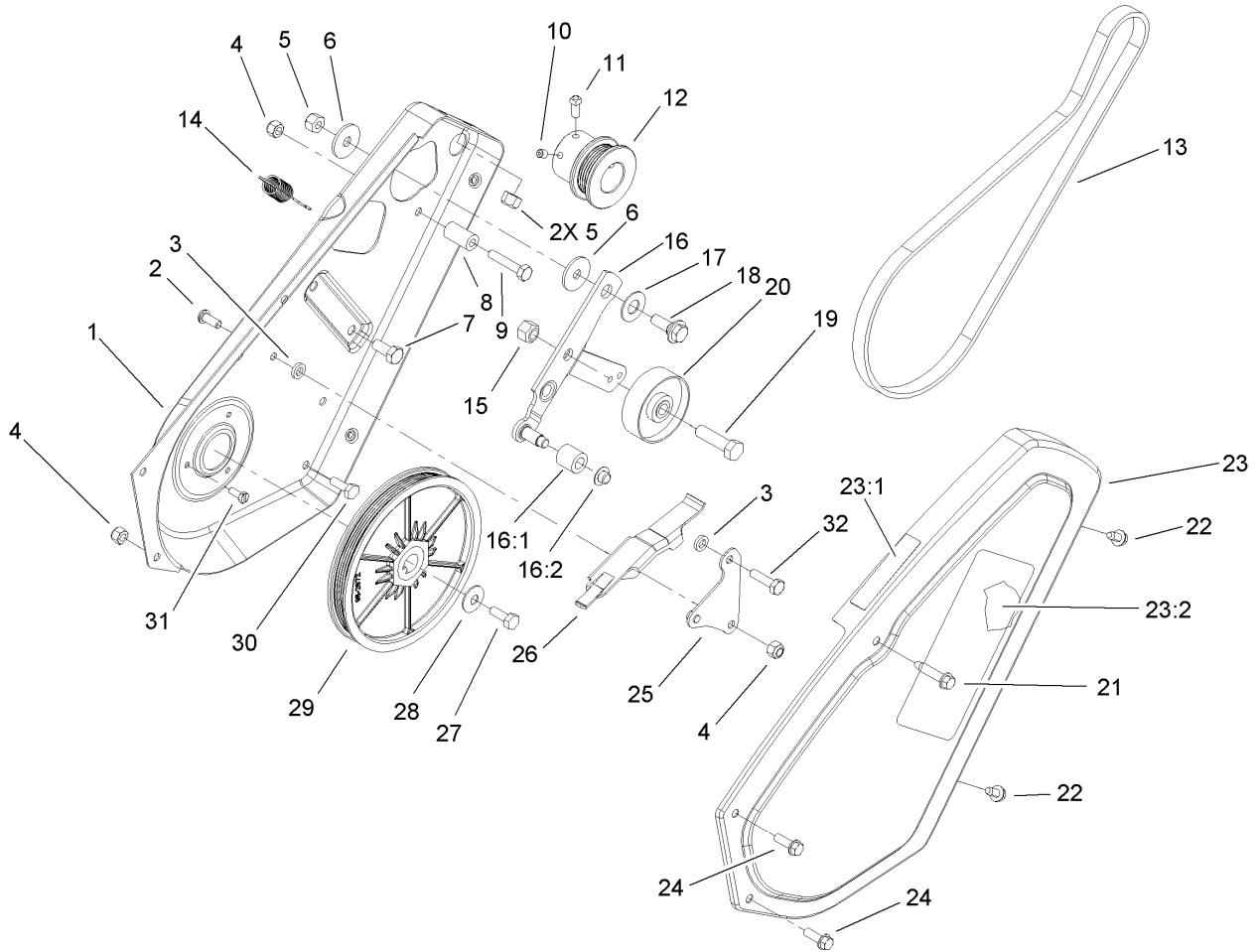
- ❶ Not serviced separately
- ❷ Obtain from your local Briggs & Stratton dealer
- ❸ Included in Carburetor Gasket Set (Ref. No. 977)



Rotor Housing and Scraper Assembly

Ref	Part No.	Qty.	Description
1	3296-42	17	Nut-Lock, NI
2	52-7290-03	1	Retainer-Bearing
3	3234-25	1	Screw-HHF
4	3256-24	1	Washer-Flat
5	52-7270	1	Washer-Rubber
6	100-1048	2	Bearing-Ball
7	322-43	1	Screw-HH
8	38-8211	1	Pin-Rotor
9	321-4	3	Screw-HH
10	3256-22	7	Washer-Flat
11	321-6	2	Screw-HH
12	55-9512	1	Cover-Bottom
13	55-9430	1	Bracket-Housing
14	3296-2	3	Nut-Lock
15	38-8620	1	Flange-Bearing
16	52-7280	2	Washer-Thrust
17	56-2610	1	Bracket-Housing, Lower
18	32149-2	3	Nut-Keps
19	3229-11	3	Screw-CARR
20	3256-1	2	Washer-Flat
21	32128-10	2	Nut-Lock, HHF
22	55-8760	1	Scraper
23	105-1967-03	1	Housing-Lower
24	52-9110	1	Flange-Bearing

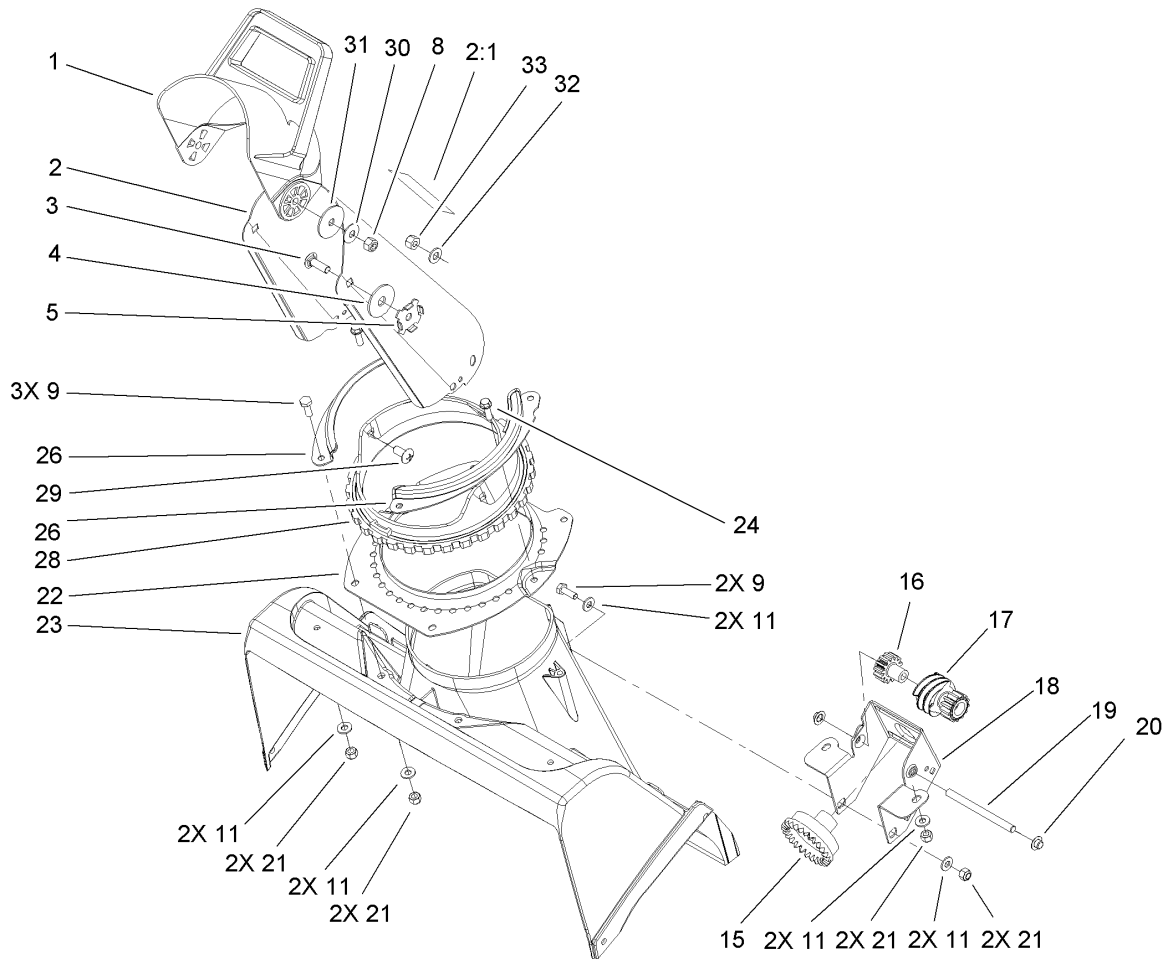
Ref	Part No.	Qty.	Description
25	105-1952-03	1	Sideplate-Right
26	32105-15	5	Screw



Impeller Drive Assembly

Ref	Part No.	Qty.	Description
1	55-8851-03	1	Plate-Side, LH
2	3274-31	1	Screw-HSBH
3	55-9620	2	Spacer-Plate, Pivot
4	3296-42	3	Nut-Lock, NI
5	3296-29	3	Nut-Lock, NI
6	5-4460	2	Washer-Pivot
7	322-3	2	Screw-HH
8	55-9530	1	Sleeve-Guide, Belt
9	321-13	1	Screw-HH
10	3245-32	1	Screw-HSH
11	3241-7	1	Screw-SQH
12	95-2673	1	Pulley-Engine
13	95-6151	1	Belt-Drive
14	55-9280	1	Spring-Extension
15	32152-2	1	Nut-Lock, Cone
16	105-3542	1	Idler Arm ASM
16:1	55-9520	1	Roller-Brake
16:2	32112-11	1	Nut-Push
17	25-5641	1	Washer
18	27-0410	1	Screw-Shoulder
19	323-29	1	Screw-HH
20	55-9290	1	Pulley-Idler
21	32144-110	1	Screw-HWH
22	12-3270	2	Screw

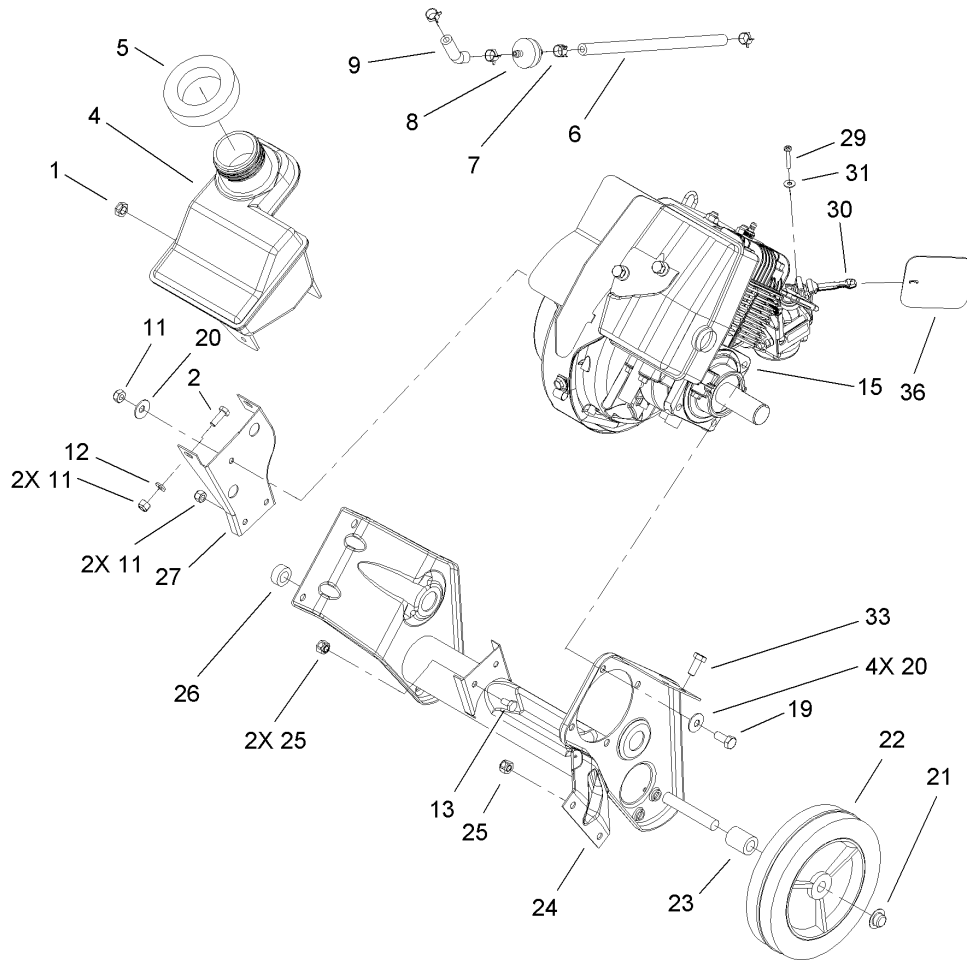
Ref	Part No.	Qty.	Description
23	105-1997	1	Cover-Drive
23:1	104-2767	1	Decal-Warning
23:2	60-9480	1	Decal
24	32105-15	2	Screw
25	55-9570	1	Pivot Plate ASM
26	55-9550	1	Brake-Arm
27	321-30	1	Screw-HH
28	3290-456	1	Washer-Belleville
29	95-2672	1	Pulley Rotor ASM
30	321-4	2	Screw-HH
31	32105-8	3	Screw-SHH
32	321-6	1	Screw-HH



Chute Assembly

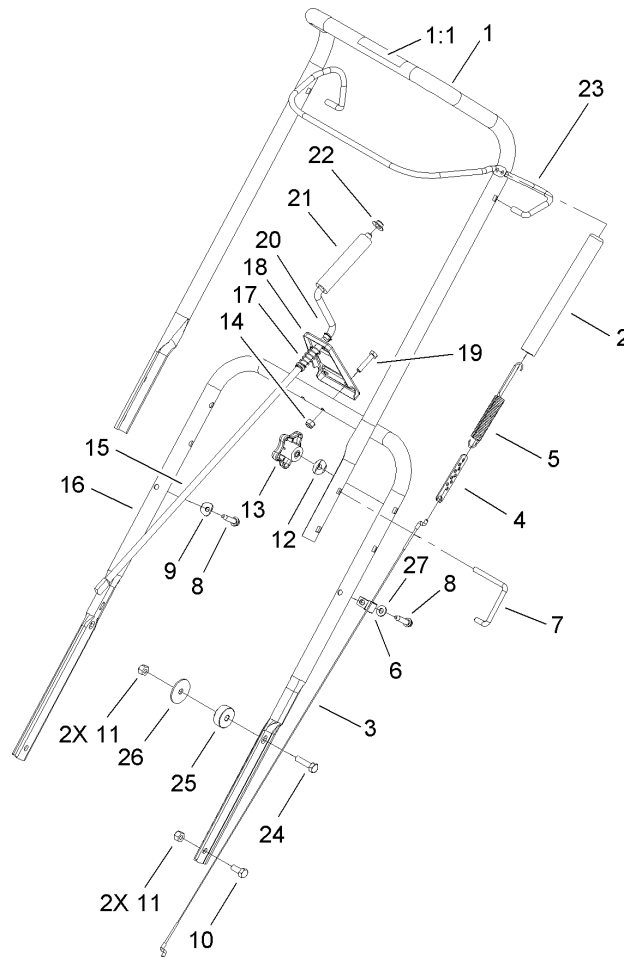
Ref	Part No.	Qty.	Description
1	56-2680	1	Chute-Deflector
2	104-4115	1	Chute ASM
2:1	104-4135	1	Decal-Danger
3	3230-22	2	Screw-CARR
4	20-4320	2	Washer-Rubber
5	55-8950	2	Plate-Friction
8	3296-29	2	Nut-Lock, NI
9	321-4	5	Screw-HH
11	3256-22	10	Washer-Flat
15	55-8740	1	Gear-Face
16	55-8750	1	Gear-Spur, Spacer
17	105-3512	1	Gear-Spur/Worm
18	105-3513	1	Bracket-Gear, Chute
19	55-9150	1	Shaft-Gear, Worm
20	32112-11	2	Nut-Push
21	3296-42	8	Nut-Lock, NI
22	55-8921-03	1	Ring-Support, Chute
23	105-1950	1	Housing-Rotor, Upper
24	46-8091	2	Screw-HWH
26	55-8910-03	2	Ring-Retainer, Chute
28	55-8720	1	Ring-Gear, Chute
29	100-5486	3	Screw-Truss HD, Phillips
30	3290-456	2	Washer-Belleville
31	3256-68	2	Washer-Flat

Ref	Part No.	Qty.	Description
32	3256-70	3	Washer-Flat
33	3296-47	3	Nut-Lock, NI



Engine, Gas Tank and Frame Assembly

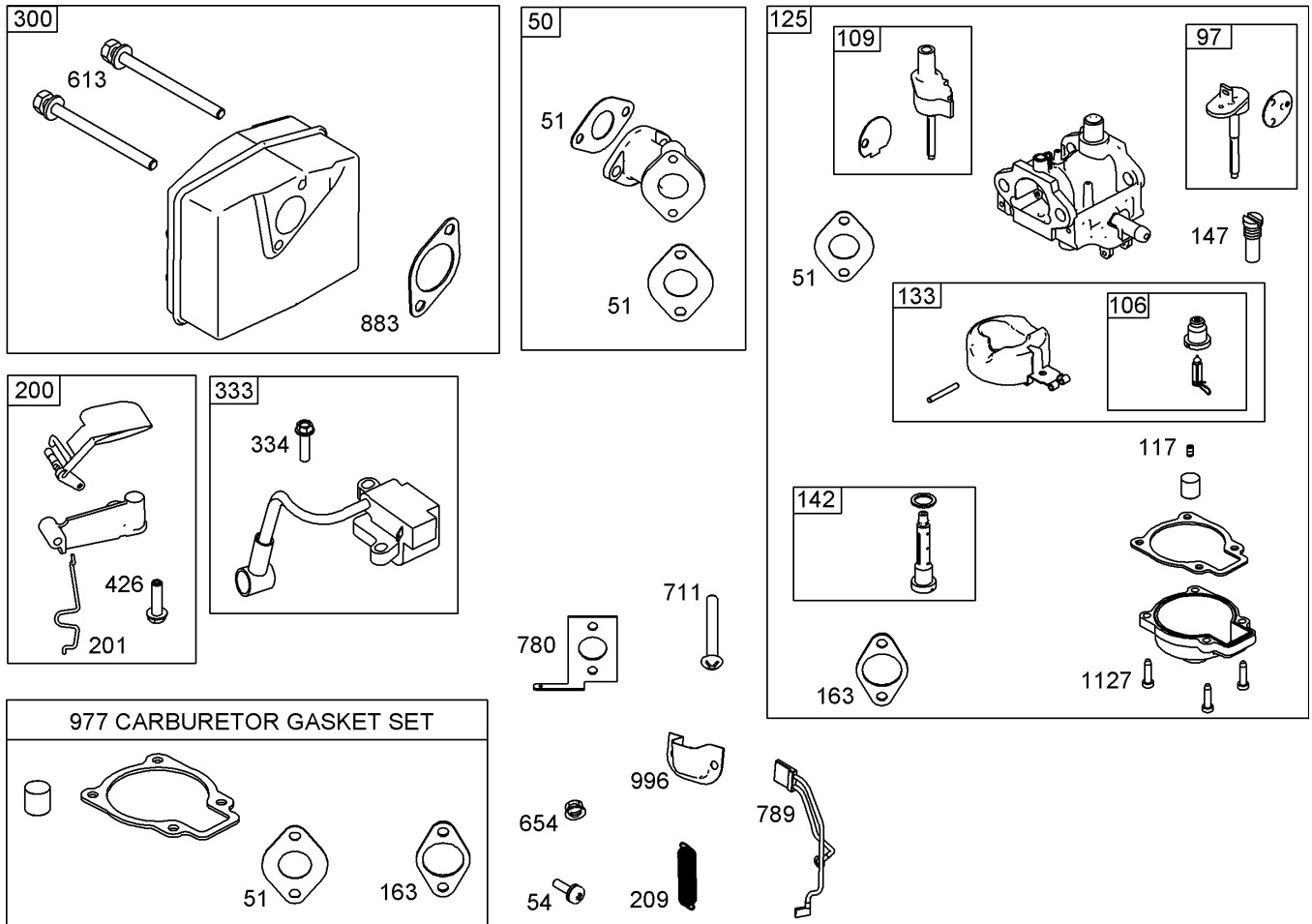
Ref	Part No.	Qty.	Description	Ref	Part No.	Qty.	Description
1	32152-8	1	Nut-Lock, Cone	31	3256-14	1	Washer-Flat
2	321-4	2	Screw-HH	33	322-43	2	Screw-HH
4	105-8952	1	Tank-Gas	36	110-3444	1	Shield-Choke Hole
5	55-9310	1	Seal-Foam				
6	110-4894	1	Hose-Fuel				
7	2412-98	4	Clamp				
8	56-6360	1	Filter-Fuel				
9	109-0304	1	Hose-Fuel				
11	3296-42	5	Nut-Lock, NI				
12	3256-22	2	Washer-Flat				
13	321-2	2	Screw-HH				
15		1	Engine-Briggs And Stratton, 084232-0121-E8				
19	322-3	4	Screw-HH				
20	3290-456	5	Washer-Belleville				
21	32112-14	2	Nut-Push				
22	66-6510	2	Wheel				
23	66-6501	1	Spacer-Wheel				
24	105-1965-03	1	Frame				
25	3296-29	3	Nut-Lock, NI				
26	66-6500	1	Spacer-Wheel				
27	105-1968-03	1	Bracket-Support, Recoil				
29	32144-97	1	Screw-PPH, Plastite				
30	104-0878	1	Lever-Choke				



Handle Assembly

Ref	Part No.	Qty.	Description
1	95-2669	1	Upper Handle ASM
1:1	104-2775	1	Decal-Drive, Rotor
2	71-5530	1	Cover-Spring
3	110-2182	1	Cable-Clutch
4	71-5330	1	Adjuster-Cable, Clutch
5	110-2181	1	Spring-Extension
6	2412-91	1	Clamp
7	98-2266	2	Lock-Handle
8	32144-110	2	Screw-HWH
9	3-7501	1	Washer
10	322-3	2	Screw-HH
11	3296-29	4	Nut-Lock, NI
12	107-3844	2	Washer
13	106-4161	2	Knob-Handle
14	3296-42	2	Nut-Lock, NI
15	55-9140	1	Rod-Crank, Chute
16	55-9121-03	1	Handle-Lower
17	104-8664	1	Spring-Compression
18	55-9090-03	1	Support-Crank, Chute
19	321-8	2	Screw-HH
20	256-249	1	Bushing
21	40-8230	1	Grip-Control, Chute
22	3290-320	1	Retainer-Push On
23	100-5473-03	1	Bail-Control

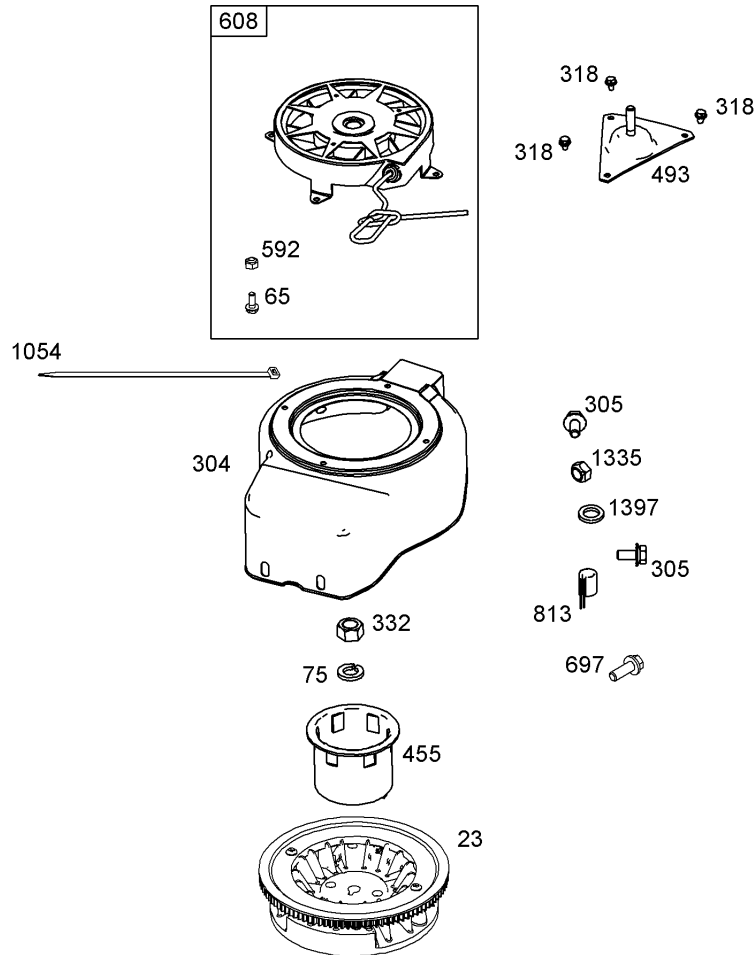
Ref	Part No.	Qty.	Description
24	322-6	2	Screw-HH
25	105-1961	2	Spacer
26	3256-68	2	Washer-Flat
27	3256-22	1	Washer-Flat



Muffler, Carburetor and Intake Manifold Assembly Briggs and Stratton 084232-0121-E8

Ref	Part No.	Qty.	Description
250	801232	1	Manifold-Intake
251	801224	1	Gasket-Intake
254	801230	1	Screw (Intake Manifold)
297	801306	1	Shaft-Throttle
2106	801317	1	Seat-Inlet
2109	801307	1	Shaft-Choke
2117	801310	1	Jet-Main (Standard)
2125	801233	1	Carburetor
2133	801316	1	Float-Carburetor
2142	801313	1	Nozzle-Carburetor
2147	801308	1	Jet-Pilot
2163	801227	1	Gasket-Cleaner, Air
2200	801289	1	Blade-Governor
2201	801225	1	Link-Vane, Air
2209	801223	1	Spring-Governor
2300	801250	1	Muffler
2333	801268	1	Armature-Magneto
2334	801267	1	Screw (Magneto Armature)
2426	801231	1	Screw (Governor Blade)
2613	801251	1	Screw (Muffler)
2654	801324	1	Nut (Intake Manifold) (Used Before Code Date 05042800)
2711	801229	1	Screw (Carburetor Shield)
2780	801228	1	Anchor-Spring

Ref	Part No.	Qty.	Description
2789	801253	1	Wire ASM
2883	801252	1	Gasket-Exhaust
2977	801312	1	Gasket Set-Carburetor
2996	801226	1	Shield-Carburetor
21127	801318	1	Screw (Float Bowl)



Flywheel, Blower Housing and Starter Assemblies Briggs and Stratton 084232-0121-E8

Ref	Part No.	Qty.	Description
23	801246	1	Flywheel
65	801243	1	Screw (Rewind Starter)
75	801237	1	Washer (Flywheel)
304	801257	1	Housing-Blower
305	801239	1	Screw (Blower Housing)
318	801241	1	Screw (Mounting Bracket)
332	801238	1	Nut (Flywheel)
455	801235	1	Cup-Flywheel
493	801240	1	Bracket-Mounting
592	801244	1	Nut (Rewind Starter)
608	801242	1	Starter-Rewind
697	801248	1	Screw (Starter Motor)
813	801249	1	Clamp
1054	861206	1	Tie-Cable
1335	801269	1	Nut (Blower Housing)
1397	801270	1	Washer (Blower Housing)

Attachments and Accessories

For 38517 - CCR 3650 GTS Snowthrower

Product Name

Model/Part

Lower Shroud Replacement Kit	108-7338
Snow Cab	88-0600

NOTES

