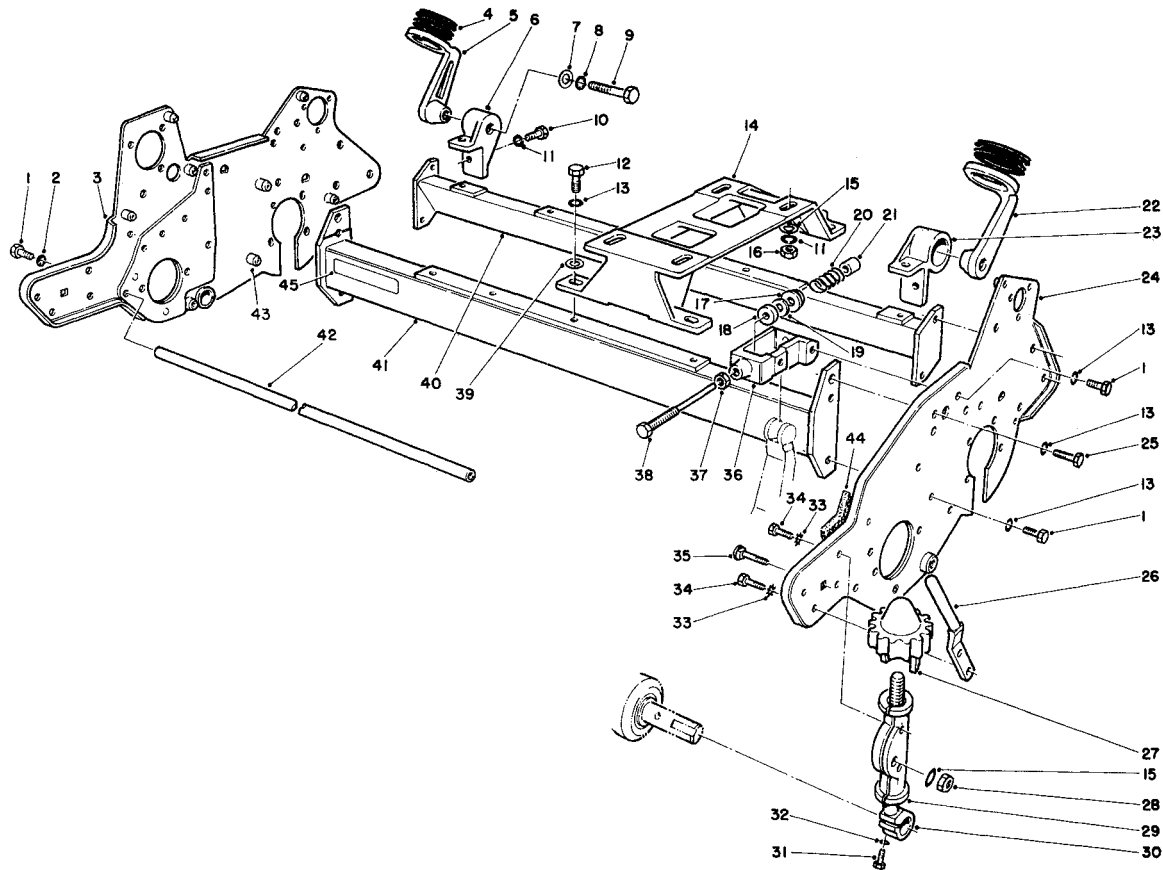


TORO[®]

MODEL NO. 04050-00390 & UP

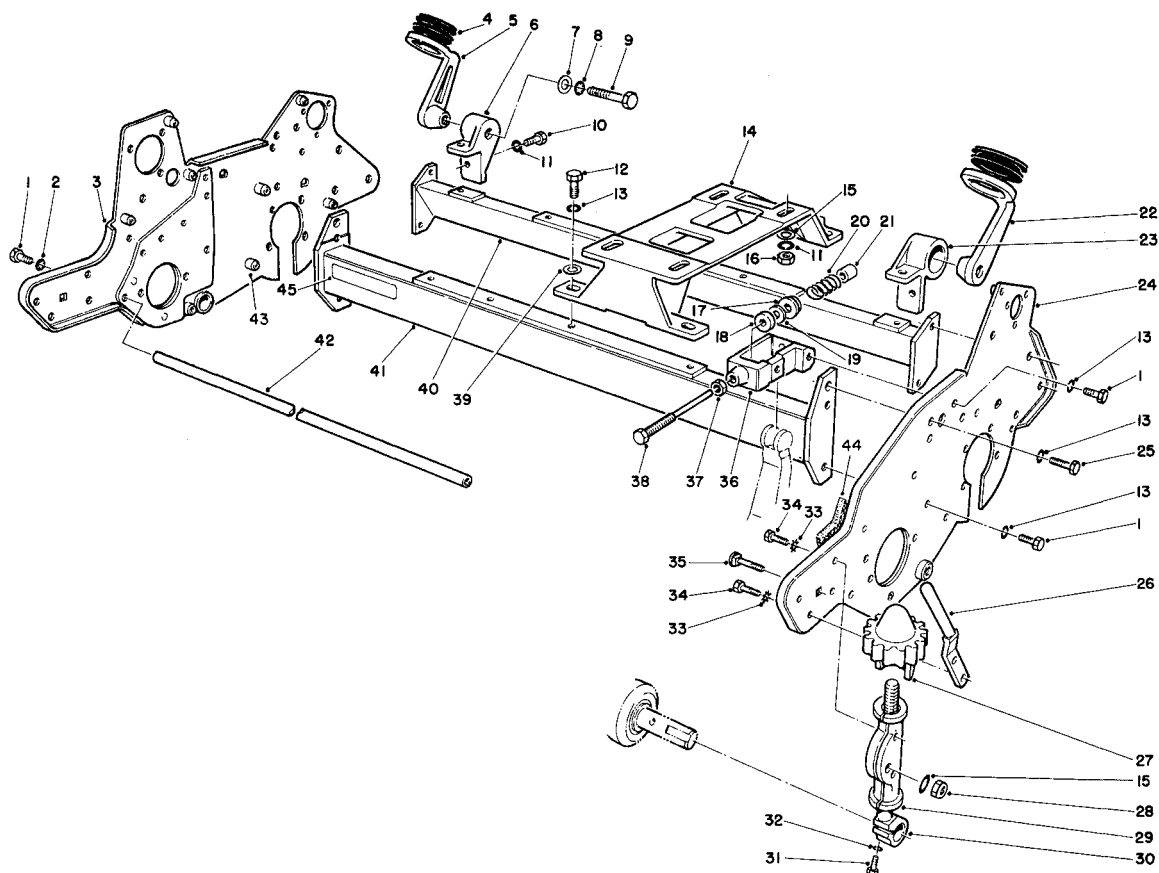
**PARTS
CATALOG****GREENSMASTER[®] 1000**

T-0934-90

FRAME ASSEMBLY

Ref. No.	Part No.	Description	No. Used
1	323-4	Screw Cap, Hex Hd	12
2	3254-6	Washer — Lock, Int. Tooth	2
3	13-7219	Plate — Side, RH W.A.	1
4	65-7510	Grommet — Handle	2
5	65-7480	Arm — Handle, RH	1
6	65-7490	Socket — Handle, RH	1
7	3256-26	Washer — Flat	2
8	3254-4	Washer — Lock, Int. Tooth	2
9	325-7	Screw — Cap, Hex Hd	2
10	322-4	Screw — Cap, Hex Hd	4
11	3253-4	Washer — Lock	8
12	323-5	Screw — Cap, Hex Hd	4
13	3253-21	Washer — Lock	14
14	65-6110	Base — Engine	1
15	3256-23	Washer — Flat	6
16	3217-6	Nut Full	4

Ref. No.	Part No.	Description	No. Used
17	65-6380	Collar — Thrust	2
18	249-46	Collar — Plain	2
19	65-6390	Washer — Thrust	2
20	65-6400	Spring — Compression	2
21	65-6360	Support — Spring	2
22	65-7470	Arm — Handle, LH	1
23	65-7500	Arm — Socket, LH	1
24	13-7249	Plate — Side, LH W.A.	1
25	323-18	Screw — Cap, Hex Hd	2
26	65-7250	Rod — Mounting, Grass Catcher	2
27	10-5040	Knob — Height Adj.	2
28	3296-29	Nut — Lock	2
29	10-5060	Bracket — H.O.C.	2
30	65-9500	Screw — Roller, Adj.	2
31	321-4	Screw — Cap, Hex Hd	2
32	3253-3	Washer — Lock	2

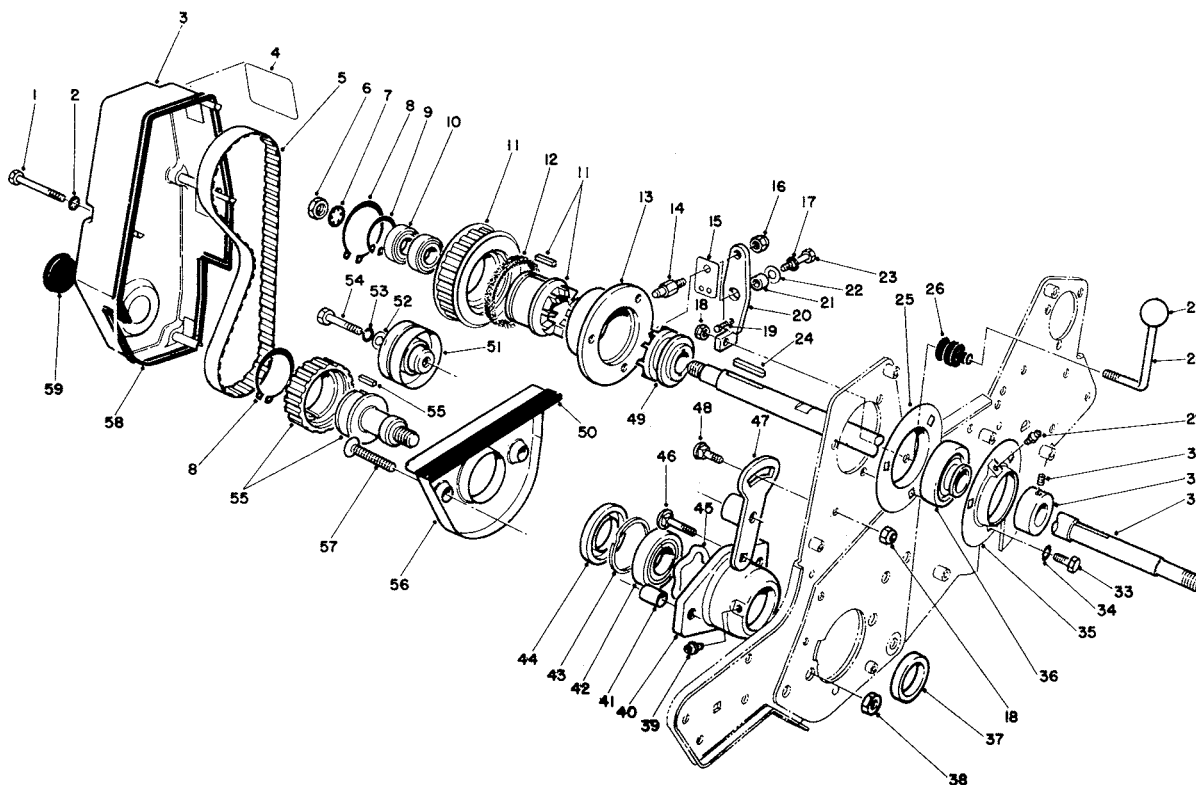


T-0934-90

FRAME ASSEMBLY (Continued)

Ref. No.	Part No.	Description	No. Used
33	3255-8	Washer — Lock, Ext. Tooth	8
34	322-2	Screw — Cap, Hex Hd	8
35	3230-5	Bolt — Carriage	2
36	65-6350	Frame — Adjuster	2
37	3220-5	Nut — Jam	2
38	65-6370	Screw — Adjusting	2
39	3256-24	Washer — Flat	4

Ref. No.	Part No.	Description	No. Used
40	65-6050	Angle — Frame, Rear	1
41	65-6010	Tube — Frame, Front	1
42	65-6160	Rod — Frame, Support	1
43	32148-6	Insert — Threaded	12
44	65-8180	Seal — Grass Catcher	1
45	55-4300	Decal — Warning	2

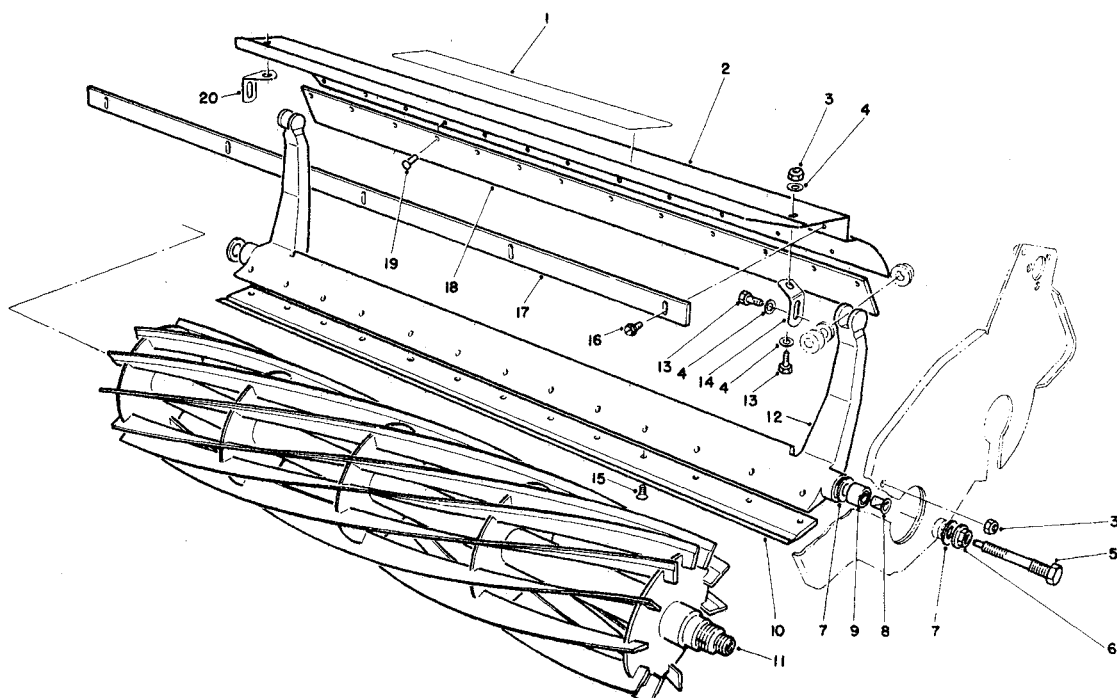


T-0949-90

REEL DRIVE ASSEMBLY

Ref. No.	Part No.	Description	No. Used
1	321-20	Screw — Cap, Hex Hd	4
2	3254-8	Washer — Lock, Int. Tooth	4
3	65-7140	Cover — Reel, Drive W.A.	1
4	65-7660	Decal — Reel Drive	1
5	65-6200	Belt — Drive, Reel	1
6	3220-5	Nut — Jam	1
7	3254-4	Washer — Lock, Int. Tooth	1
8	32151-95	Ring — Retaining, External	2
9	32151-89	Ring — Retaining, Internal	1
10	251-336	Bearing	2
11	13-7919	Clutch & Pulley Assembly (Incl. Ref. #8)	1
12	65-6970	Seal — Felt	1
13	65-6920	Housing — Clutch	1
14	65-7020	Pin — Actuator	1
15	65-6290	Spring — Detent, Clutch	1
16	3296-42	Nut — Lock	1
17	3253-3	Washer — Lock	1
18	3296-29	Nut — Lock	2
19	3259-15	Screw — Drive	1
20	65-7030	Lever — Clutch, W.A.	1
21	65-6280	Spacer	1
22	3290-414	Washer	1
23	321-4	Screw — Cap, Hex Hd	1
24	65-6930	Key — Square	2
25	65-6710	Flangette	1
26	65-7310	Boot	1
27	233-17	Knob	1
28	65-6300	Lever	1
29	302-65	Fitting — Grease	1
30		Screw — Set	1

Ref. No.	Part No.	Description	No. Used
31		Collar — Locking	1
32	65-6340	Shaft — Power	1
33	322-3	Screw — Cap, Hex Hd	3
34	3253-4	Washer — Lock	3
35	65-6700	Flangette	1
36	251-343	Bearing (Incl. Ref. #30 & 31)	1
37	253-96	Seal	1
38	32152-2	Nut	2
39	302-5	Fitting — Grease	1
40	65-6090	Housing — Bearing	1
41	65-8290	Standoff — Cover	2
42	251-342	Bearing — Self Aligning	1
43	32151-92	Ring — Retaining	1
44	253-163	Seal	1
45	3290-485	Washer — Wave	1
46	3230-2	Bolt — Carriage	1
47	65-6310	Bracket — Reel Idler, W.A.	1
48	3230-20	Bolt — Carriage	1
49	65-6940	Slider	1
50	65-7131	Trim	1
51	65-6330	Pulley	1
52	3256-24	Washer — Flat	1
53	3253-21	Washer — Lock	1
54	323-8	Screw — Cap, Hex Hd	1
55	13-7929	Pulley & Drive Assembly (Incl. Ref. #8)	1
56	65-7190	Cover — Arm, Groomer	1
57	3289-23	Screw — Flat Hd	2
58	65-7220	Trim	1
59	237-160	Plug	1



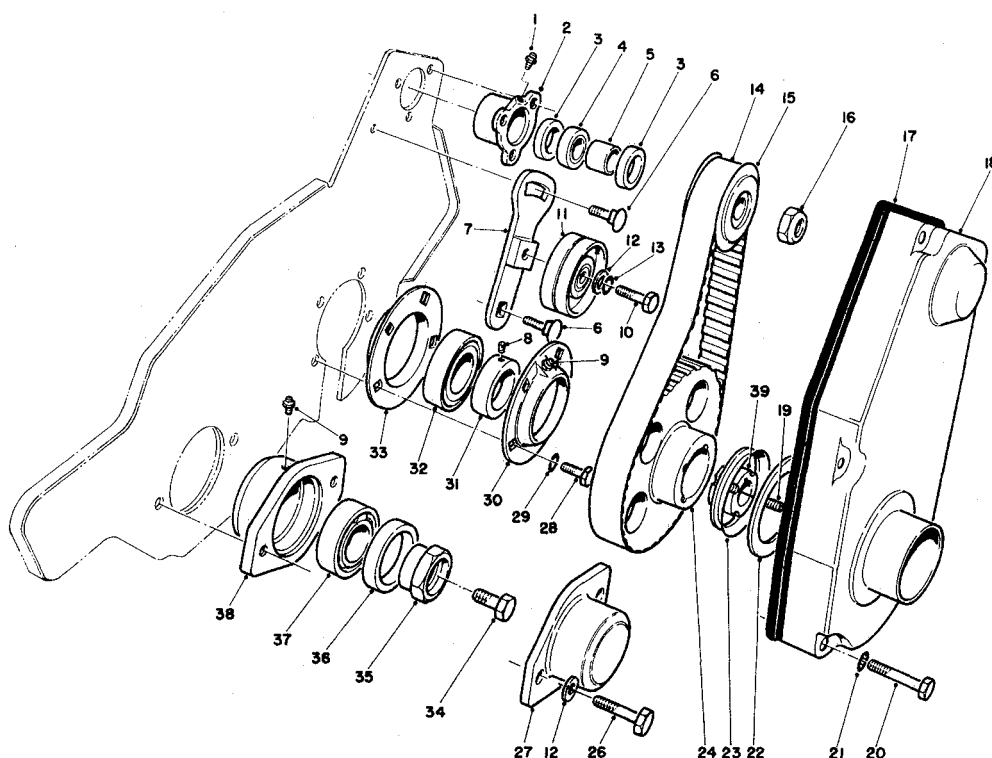
T-0947-90

REEL ASSEMBLY

Ref. No.	Part No.	Description	No. Used
1	62-5070	Decal — Shield	1
2	65-6410	Shield — Grass (Incl. Ref. #18 & 19)	1
3	3296-42	Nut	4
4	3256-22	Washer — Flat	6
5	65-6270	Bolt — Bed Bar	2
6	32128-48	Nut — Flange	2
7	65-6260	Washer — Thrust	4
8	52-2890	Bushing — Flange	2
9	63-9510	Bushing — Rubber	2
10	63-8470	Bedknife — 1/8"	1
*	63-8560	Bedknife — Tournament	1
*	65-8250	Bedknife — Micro Cut	1

Ref. No.	Part No.	Description	No. Used
11	13-8519	Reel W.A.	1
12	65-6240	Bedbar	1
13	321-3	Screw — Cap, Hex Hd	4
14	65-6450	Bracket — Shield, L.H.	1
15	57-4910	Screw — Special	13
16	32144-73	Screw — Self Tapping	5
17	36-7260	Bar — Cutoff	1
18		Flap — Shield, Grass	1
19		Rivet	13
20	65-6460	Bracket — Shield, R.H.	1
*†	13-8199	Bar — Heights of Cut	1
†	Note:	Includes the following parts.	
†	32122-22	Screw	1
†	3219-14	Nut	1

* Not Illustrated



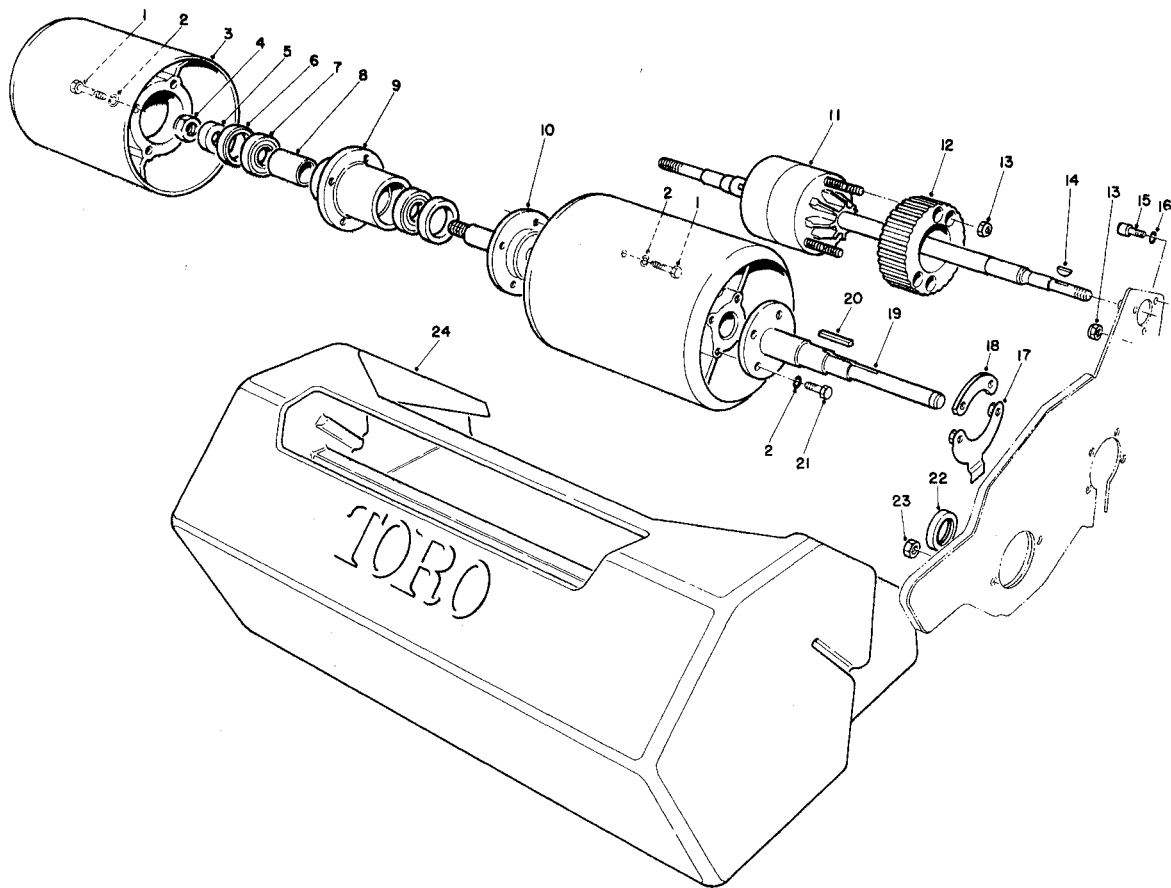
T-0945-90

DRUM DRIVE ASSEMBLY

Ref. No.	Part No.	Description	No. Used
1	302-55	Fitting — Grease	2
2	65-6650	Housing — Bearing	2
3	253-160	Seal	4
4	251-338	Bearing	2
5	65-6870	Spacer — Pulley	2
6	3230-20	Bolt — Carriage	4
7	65-6740	Bracket — Idler W.A.	2
8		Screw — Set	2
9	302-5	Fitting — Grease	4
10	323-29	Screw — Cap, Hex Hd	2
11	65-6330	Pulley — Idler	2
12	3256-24	Washer — Flat	4
13	3253-21	Washer — Lock	2
14	65-6210	Belt	2
15	65-6660	Pulley	2
16	3296-57	Nut	2
17	65-7130	Strip — Edging	2
18	65-7100	Cover — L.H.	1
*	65-7060	Cover — R.H.	1
19	3245-43	Screw — Set	4

Ref. No.	Part No.	Description	No. Used
20	321-11	Screw — Cap, Hex Hd	8
21	3254-8	Washer — Lock, Int. Tooth	8
22	65-6570	Washer	2
23	253-161	Seal — V-Ring	2
24	65-8470	Pulley — Shaft, Drum	2
26	323-18	Screw — Cap, Hex Hd	2
27	65-6220	Housing — Bearing	1
28	322-3	Screw — Cap, Hex Hd	8
29	3253-4	Washer — Lock	8
30	65-6580	Flangette (Incl. Ref. #9)	2
31		Collar — Locking	2
32	251-337	Bearing (Incl. Ref. #8 & 31)	2
33	65-6590	Flangette	2
34	323-2	Screw — Cap, Hex Hd	1
35	65-8240	Nut — Bearing, Lock	1
36	253-163	Seal — Spring Loaded	2
37	251-342	Bearing	2
38	65-6090	Housing — Bearing	2
39	65-8460	Taper Lock	2

* Not Illustrated

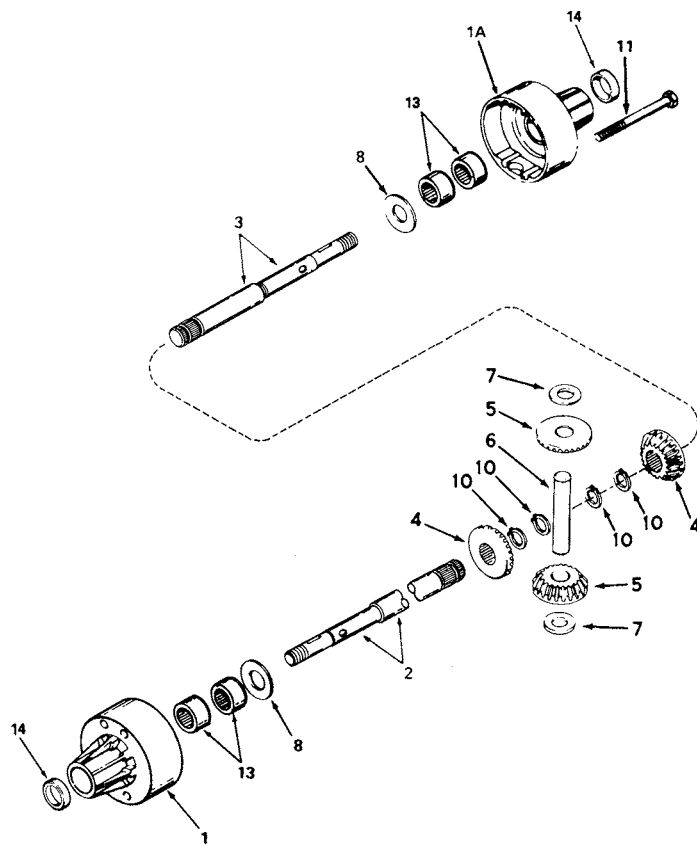


T-0944-90

DRUM & BASKET ASSEMBLY

Ref. No.	Part No.	Description	No. Used
1	322-9	Screw — Cap, Hex Hd	8
2	3253-4	Washer — Lock	16
3	65-6500	Drum	2
4	3296-33	Nut	1
5	65-6530	Spacer — Seal Ride	1
6	253-159	Seal	2
7	251-257	Bearing	2
8	65-6520	Spacer — Bearing	1
9	65-6510	Hub — Drum	1
10	65-6470	Spindle — Drum	1
11	65-8490	Differential — Needle Brg.	1
12	65-6670	Pulley — Differential	1

Ref. No.	Part No.	Description	No. Used
13	3296-29	Nut — Lock	8
14	3257-32	Key	2
15	3274-15	Capscrew — Soc Hd	6
16	3253-18	Washer — Lock	6
17	65-6550	Cover — Slot, W.A.	2
18	65-6560	Plate — Clamp	2
19	65-6540	Shaft — Drum	2
20	7-0036	Key	2
21	322-5	Screw — Cap, Hex Hd	8
22	253-96	Seal	1
23	32152-2	Nut — Lock	2
24	65-7230	Basket — Grass	1

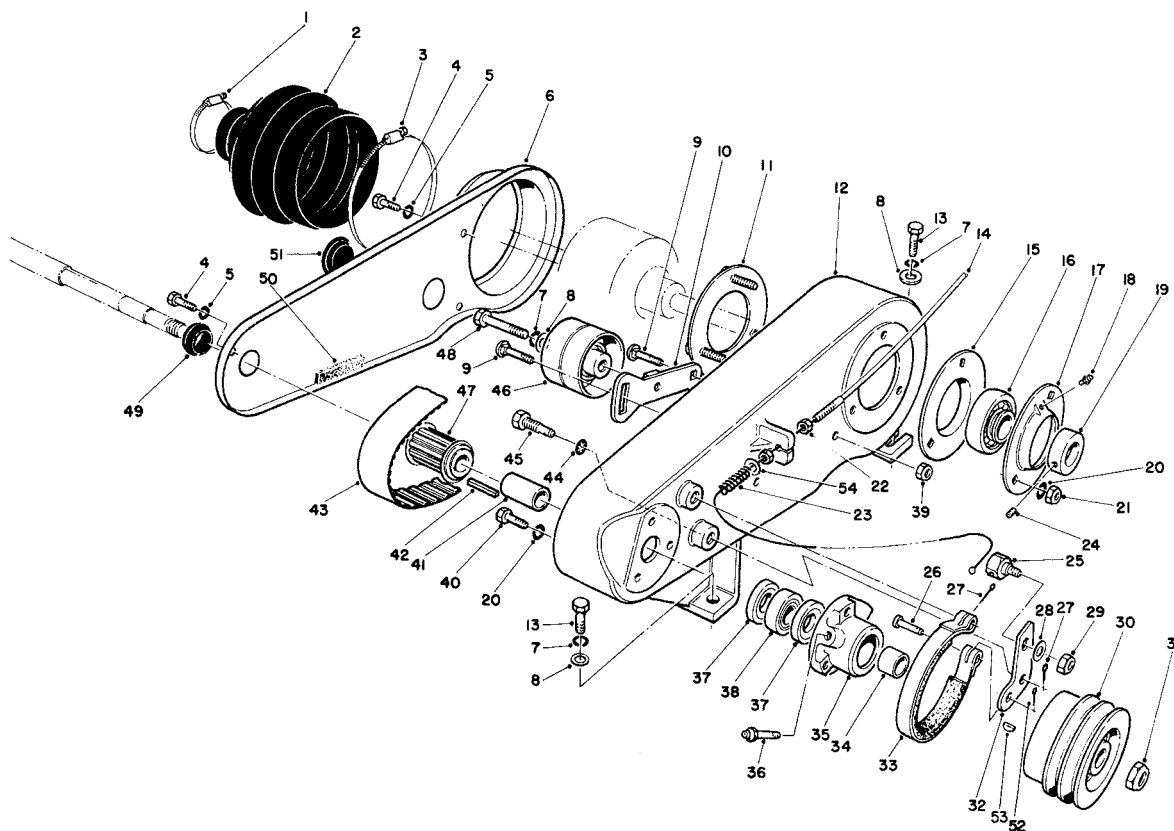


T-0940-90

DIFFERENTIAL ASSEMBLY MODEL NO. 100-085

Ref. No.	Part No.	Description	No. Used
1	774881	Housing, Differential Carrier (Incl. Ref. #13 & 14)	1
1A	774882	Housing, Differential Carrier (Incl. Ref. #13 & 14)	1
2	774864A	Axle (20-29/32" Long)	1
3	774863A	Axle (6-7/32" Long)	1
4	778221	Gear, Bevel	2
5	778068	Gear, Pinion	2

Ref. No.	Part No.	Description	No. Used
6	786040	Pin, Drive	1
7	780096	Washer, Thrust	2
8	780001	Washer	2
10	792125	Ring, Retaining (Pkg. of 2)	4
11	792093	Screw, Flanged Hex Hd, 5/16-18 x 4-3/16	4
13	780140	Bearing, Needle	4
14	788042	Seal, Oil	2

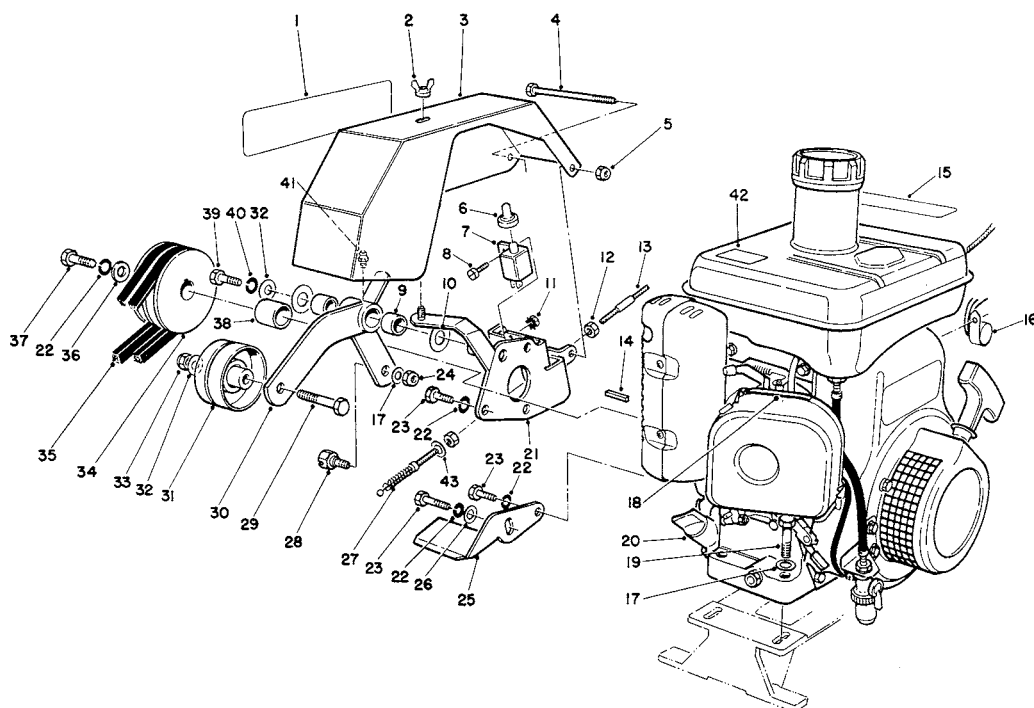


T-0940-90

COUNTERSHAFT ASSEMBLY

Ref. No.	Part No.	Description	No. Used
1	2412-92	Clamp — Hose	1
2	65-6800	Boot — Differential	1
3	2412-46	Clamp — Hose	1
4	321-3	Screw — Cap, Hex Hd	3
5	3253-3	Washer — Lock	3
6	65-6890	Cover — Box	1
7	3253-21	Washer — Lock	5
8	3256-24	Washer — Flat	5
9	3230-2	Bolt — Carriage	2
10	65-6740	Bracket — Idler	1
11	65-6720	Plate — Screw W.A.	1
12	65-6690	Housing — Countershaft	1
13	323-5	Screw — Cap, Hex Hd	4
14	65-7780	Cable — Brake (Incl. Ref. #22)	1
15	65-6710	Flangette	1
16	251-343	Bearing (Incl. Ref. #19 & 24)	1
17	65-6700	Flangette (Incl. Ref. #18)	1
18	302-65	Fitting — Grease	1
19		Collar — Locking	1
20	3253-4	Washer — Lock	6
21	3218-2	Nut — Jam	3
22	3219-1	Nut — Hex	2
23	65-7790	Spring — Compression	1
24		Screw — Set	1
25	65-6820	Bolt — Cable, Mounting	1
26	283-75	Pin — Clevis	1
27	3272-6	Cotter Pin	2

Ref. No.	Part No.	Description	No. Used
28	3256-23	Washer — Flat	1
29	3296-47	Nut — Lock	1
30	65-6880	Pulley — Shaft, Input	1
31	3296-57	Nut — Lock	1
32	65-6830	Lever — Brake	1
33	65-6780	Band — Brake	1
34	65-6870	Spacer — Short	1
35	65-6760	Housing — Bearing	1
36	302-64	Fitting — Grease (Long)	1
37	253-160	Seal	2
38	251-338	Bearing — Self Aligning	1
39	3296-29	Nut — Lock	2
40	322-5	Screw — Cap, Hex Hd	3
41	65-6860	Spacer — Long	1
42	65-6850	Key	1
43	65-6170	Belt	1
44	3254-6	Washer — Lock, Int. Tooth	2
45	65-6810	Support — Brake	2
46	65-6790	Pulley — Idler	1
47	65-6840	Pulley — Countershaft	1
48	323-8	Screw — Cap, Hex Hd	1
49	253-162	Grommet	1
50	65-6900	Strip — Seal, Cover	1
51	237-160	Plug	1
52	3272-8	Pin — Cotter	1
53	3257-32	Key	1
54	3256-22	Washer — Flat	1

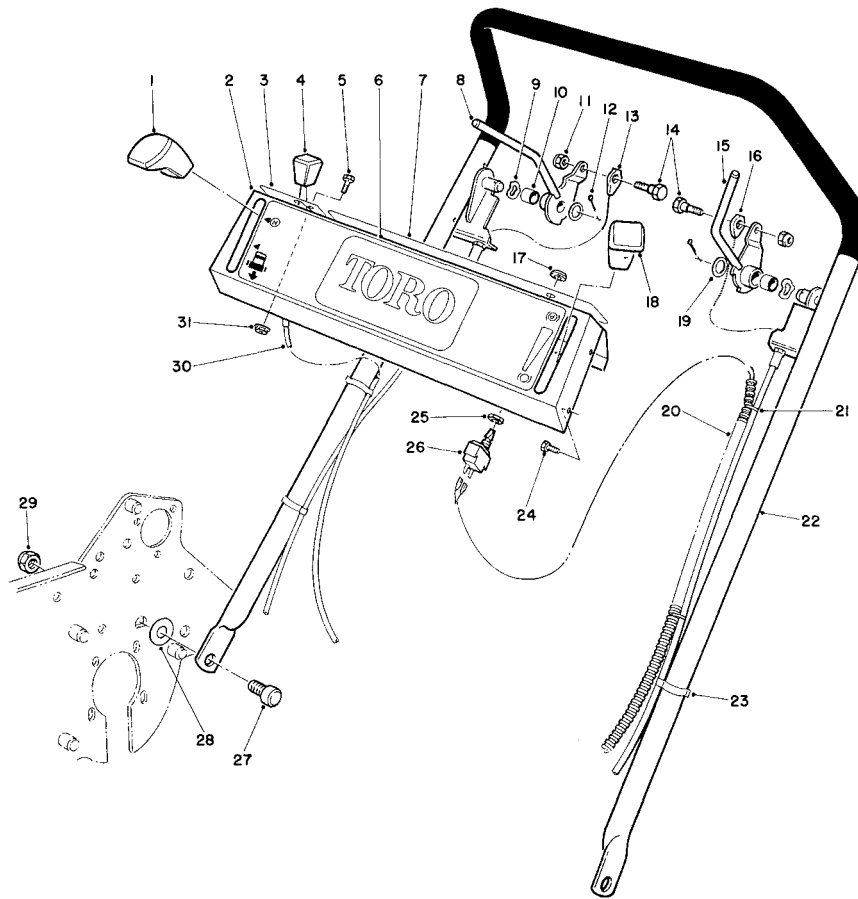


T-0938-90

ENGINE & BELLCRANK ASSEMBLY

Ref. No.	Part No.	Description	No. Used
1	65-7690	Decal — Greenmaster 1000	1
2	65-7440	Nut — Wing	1
3	65-7430	Cover — Bellcrank	1
4	321-20	Screw — Cap, Hex Hd	1
5	3296-42	Nut — Lock	1
6	65-7400	Boot — Switch	1
7	65-7410	Switch	1
8	3252-4	Screw — Fillister Hd	2
9	256-309	Bushing	2
10	256-310	Washer — Special	2
11	32149-7	Nut — Lock, Ext. Tooth Washer	2
12	3219-1	Nut — Hex	2
13	65-7781	Cable — Clutch (Incl. Ref. #12)	1
14		Key	1
15	65-8500	Decal — Fuel	1
16	65-7420	Module — Interlock	1
17	3256-23	Washer — Flat	5
18	65-8380	Decal — Choke	1
19	322-9	Screw — Cap, Hex Hd	4
20	65-8510	Engine (Incl. Ref. #14)	1
21	65-7280	Support — Bellcrank W.A.	1

Ref. No.	Part No.	Description	No. Used
22	3253-4	Washer — Lock	5
23	48-7700	Screw — Cap, Hex Hd	5
24	3296-47	Nut — Lock	1
25	65-7340	Support — Belt	1
26	3256-23	Washer	1
27	65-7790	Spring — Compression	1
28	65-6820	Bolt — Clutch, Mounting	1
29	323-10	Screw — Cap, Hex Hd	1
30	65-7350	Bellcrank W.A. (Incl. Ref. #9 & 41)	1
31	65-6790	Pulley — Idler	1
32	3256-24	Washer — Plain	2
33	3296-39	Nut — Lock	1
34	65-7260	Pulley — Input, Power	1
35	65-7270	Belt-V, Matched Set	1
36	65-8270	Washer — Flat	1
37	48-9460	Screw	1
38	65-8260	Spacer — Shaft, Engine	1
39	323-4	Screw — Cap, Hex Hd	1
40	3253-21	Washer — Lock	1
41	302-5	Fitting — Grease	1
42	63-8440	Decal — Hot	1
43	3256-22	Washer — Flat	1



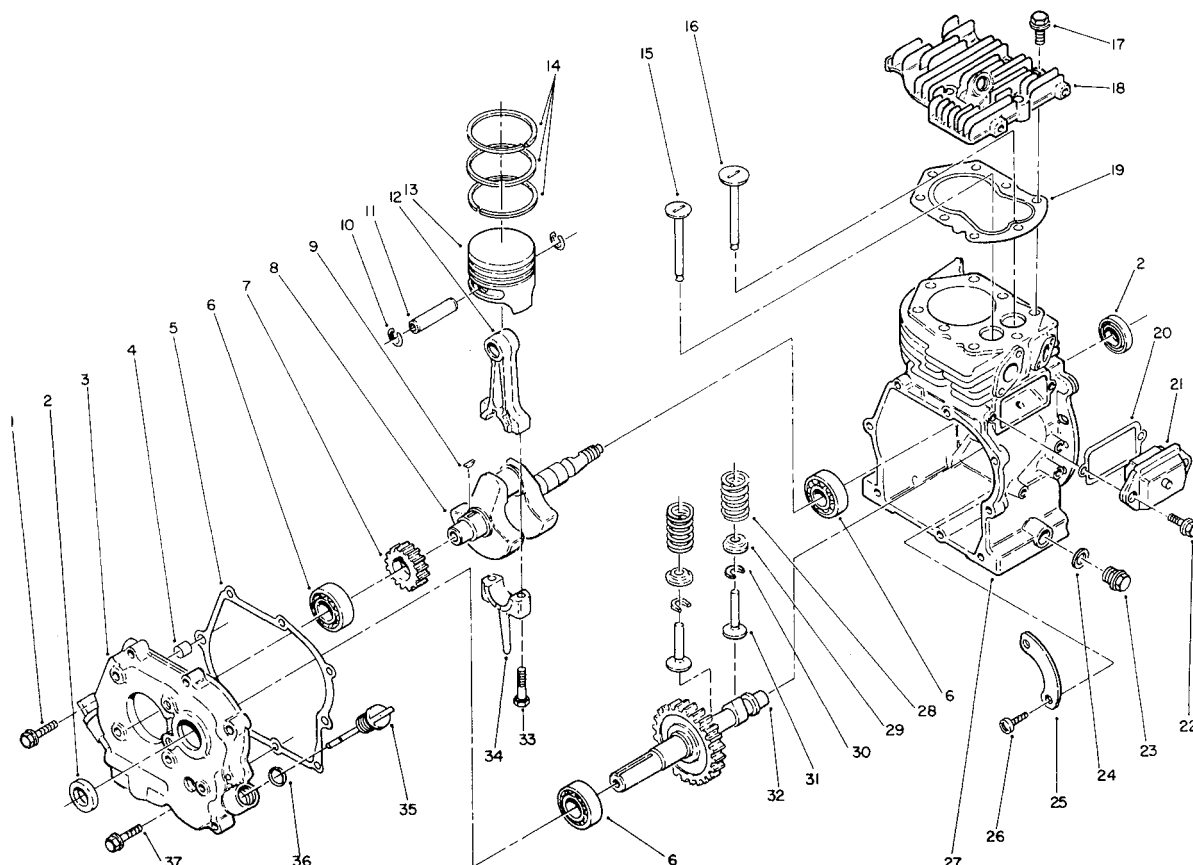
C-0941-90

HANDLE ASSEMBLY

Ref. No.	Part No.	Description	No. Used
1	62-1290	Knob — Black	1
2	65-7750	Panel — Control	1
3	65-8170	Decal — Throttle	1
4	66-0120	Knob — Control	1
5	3290-134	Screw — Machine, Hex Hd	2
6	65-7670	Decal — Panel, Control	1
7	65-7680	Decal — Panel, Ignition	1
8	65-7620	Lever — Clutch	1
9	65-7740	Washer — Wave	2
10	256-206	Bushing	2
11	3296-42	Nut	2
12	3272-6	Pin — Cotter	2
13	65-7781	Cable — Clutch	1
14	11-9030	Screw — Shoulder	2
15	65-7720	Lever — Brake	1
16	65-7780	Cable — Brake	1
17	218-497	Facenut	1
18	62-1291	Knob — Red	1

Ref. No.	Part No.	Description	No. Used
19	3256-26	Washer — Flat	2
20	65-7760	Harness — Wire	1
21	3290-381	Tie — Wire	3
22	65-7520	Handle W.A.	1
23	218-466	Clip — Cable	3
24	32104-60	Screw — Ind. Hex Hd	4
25	218-498	Nut — Lock	1
26	28-4110	Switch — Light (Incl. Ref. #17 & 25)	1
27	65-7450	Stud — Pivot	2
28	68-7460	Washer	2
29	3296-28	Nut — Lock	2
30	65-7800	Control — Throttle	1
31	32128-17	Nut — Lock, Flange	2
*	65-7610	Lever — Clutch Assy (Incl. Ref. #8 & 10)	1
*	65-7710	Lever — Brake Assy (Incl. Ref. #10 & 15)	1

* Not Illustrated



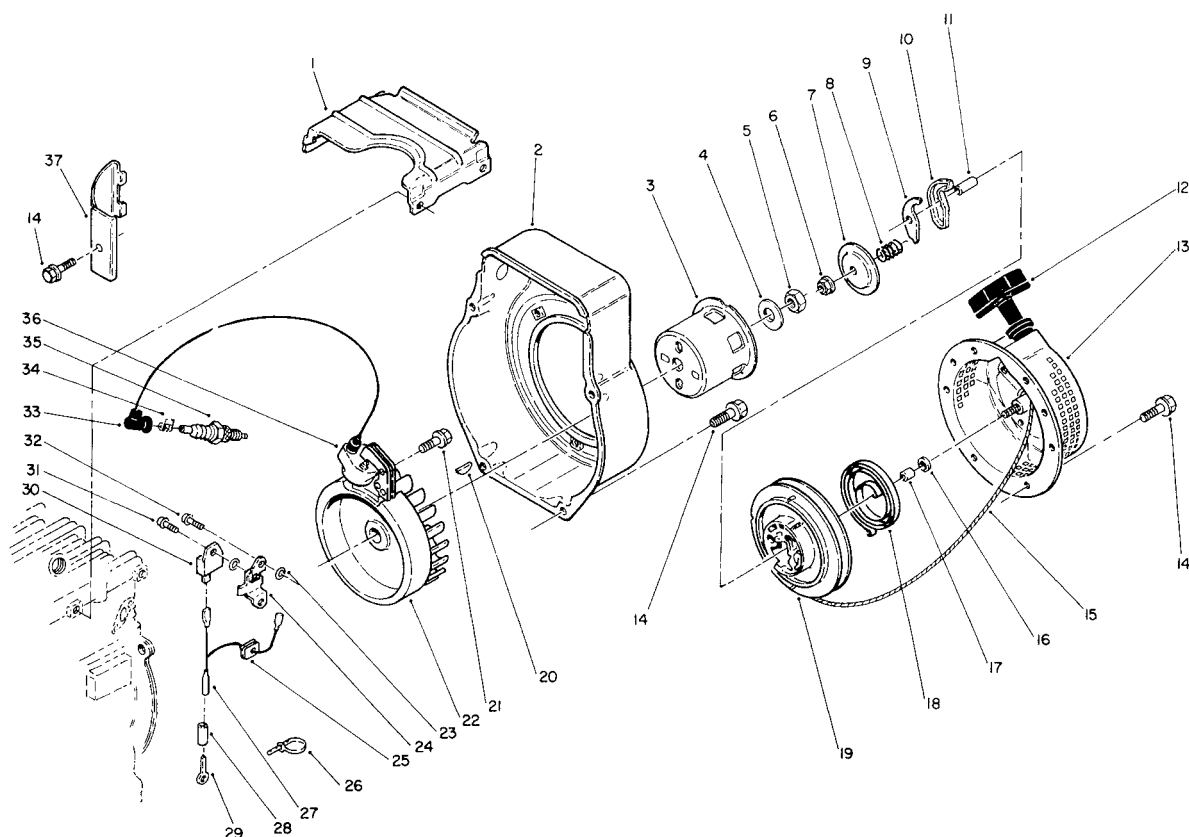
T-0950-90

ENGINE ASSEMBLY (Kawasaki Model FG150G-BS00)

Ref. No.	Part No.	Description	No. Used
1	130G0640	Bolt — Flanged	8
2	313650-4231-00	Seal — Oil	2
3	49015-6030	Cover — Crankcases	1
4	313640-418A	Pin	2
5	314601-4124A	Gasket	1
6	601A6204	Bearing — Ball	3
7	59056-2728	Gear — Helical	1
8	49119-6101	Crankshaft Assembly (Incl. Ref. #9, 12, 33 & 34)	1
9	92038-2077	Key	1
10	313650-3122-00	Snap Ring	2
11	13002-2071	Pin — Piston	1
12		Connecting Rod	1
13	314601-3111A	Piston — Std.	1
*	13029-2069	Piston — L.O. 25	1
*	13029-2070	Piston — L.O. 50	1
14	314601-3010A	Ring Set — Std.	1
*	13025-2065	Ring Set — L.O. 25	1
*	13025-2066	Ring Set — L.O. 50	1
15	313650-2112C	Valve — Exhaust	1
16	313650-2111B	Valve — Intake	1
17	130G0835	Bolt — Flanged	8

Ref. No.	Part No.	Description	No. Used
18	314601-1111A	Cylinder Head	1
19	314601-1121A	Gasket — Head	1
20	313650-1232-00	Gasket	1
21	314601-1231A	Cover — Valve Chamber	1
22	130B0612	Bolt — Flanged	2
23	130D1014	Plug — Drain	2
24	11009-2432	Gasket — Drain Plug	2
25	314601-4175A	Plate	1
26	92009-2104	Screw	2
27	49120-2172	Crankcase — Complete	1
28	315470-2113A	Spring — Valve	2
29	313650-2116-00	Retainer — Valve Spring	2
30	313650-2115-00	Collet	2
31	12032-2062	Tappet	2
32	49118-6045	Camshaft — Complete	1
33	315601-3245A	Bolt	2
34		End Cap — Connecting Rod	1
35	16115-2051	Cap — Oil Filler	2
36	92055-2064	O-Ring	2
37	130G0630	Bolt — Flanged	6

* Not Illustrated



T-0951-90

ENGINE ASSEMBLY (Continued) (Kawasaki Model FG150G-BS00)

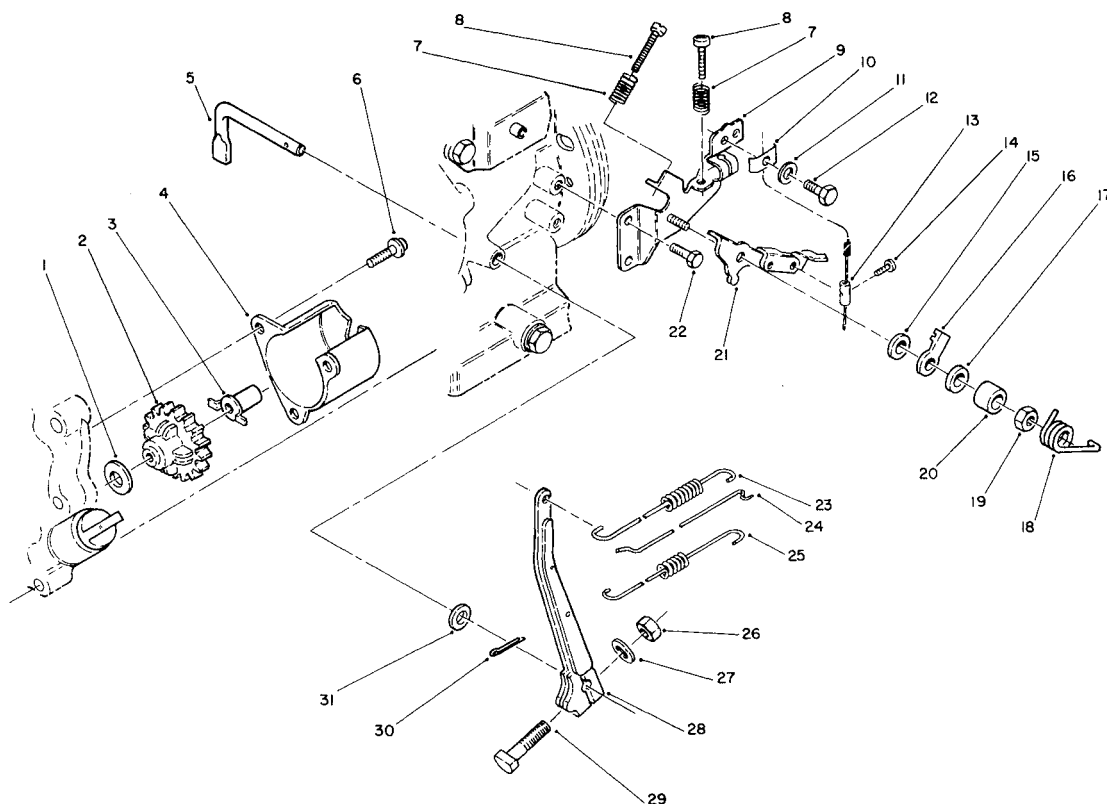
Ref. No.	Part No.	Description	No. Used
1	314601-1631A	Schroud — Engine	1
2	59066-2498-9H	Housing — Fan	1
3	49080-2131	Pulley — Starter	1
4	314401-3482A	Washer	1
5	92015-2157	Locknut	1
6	315601-3443A	Locknut	1
7	315601-3449A	Retainer	1
8	315611-3446A	Spring	1
9	315601-3445A	Pawl	1
10	315611-3463A	Pawl	1
11	314601-3473A	Pin	1
12	46075-2057	Grip, Recoil Starter	1
13	314612-3437A	Case	1
14	130B0608	Bolt — Flanged	11
15	314221-3453-00	Rope	1
16	315601-3442A	Washer	1
17	315601-3458A	Washer	1
18	315601-3452A	Spring — Recoil	1
19	59101-2069	Reel — Recoil Starter	1

Ref. No.	Part No.	Description	No. Used
20	92038-2077	Key	1
21	131B0520	Bolt — Flanged	2
22	21194-2155	Flywheel — Comp	1
23	315801-6625A	Washer	3
24	314601-8137A	Bracket	1
25	314601-8164A	Grommet	1
26	316691-8577A	Band	1
27	26011-2079	Wire — Lead	1
28	313642-8167-00	Shrink Tube	1
29	92037-2063	Clamp	1
30	21119-2101	Igniter	1
31	242B0410	Screw — Pan Hd	2
32	315601-6732A	Screw — Pan Hd	2
33	317270-8418B	Cap. Spark Plug	1
34	317270-8419A	Terminal	1
35	92070-2052	Spark Plug — 8P411S	1
36	314601-8103A	Coil Assembly — Ignition	1
37	314601-1632A	Shroud — Engine	1



Ref. No.	Part No.	Description	No. Used
1	180B0616	Bolt — Upset WS	4
2	411B0600	Washer — Flat	8
3	32052-2197-9H	Bracket — Tank	2
5	314401-6732A	Screw	2
6	51048-2055	Cap Assembly Fuel Tank (Incl. Ref. #5, 7 & 8)	1
7	315801-6644A	Spring	1
8	315801-6643B	Gasket	1
9	315801-6577A	Screw	2
10	52005-2072	Gauge — Fuel	1
11	51001-2238-9H	Fuel Tank — Complete	1
12	705A041000	Tube — Fuel	1
13	312740-6812-00	Clamp — Fuel Tube	2
14	130B0610	Screw — Hex Wash Hd.	2
15	313650-6527-00	Nut	1
16	463H1000	Washer	1
17	49105-2094-9H	Bracket — Tap	1
18	313650-6512-00	O-Ring	1
19	51023-2131	Tap Assembly (Incl. Ref. #18-24)	1

Ref. No.	Part No.	Description	No. Used
20	313650-6517-00	Screw	1
21	14043-2058	Filter — Fuel Tap	1
22	313650-6518-02	Gasket	1
23	51036-2063	Cup — Fuel Tap	1
24	313650-6522-00	Nut	1
25	705A041000	Tube — Fuel	1
26	313679-1532-00	Clamp — Fuel Tube	2
27	411B0600	Washer — Flat	8
28	461F0600	Lock Washer	4
29	311B0600	Nut — Hex	4
30	49106-2052-9Y	Cover — Muffler	1
31	92009-2308	Screw	4
32	49106-2051-9Y	Cover — Muffler	1
33	49069-20539Y	Muffler Assembly (Incl. Ref. #30-32)	1
34	311R0600	Nut — Hex	2
35	461F0600	Lock Washer	2
36	11009-2124	Gasket — Muffler	1
37	171G0616	Stud	2

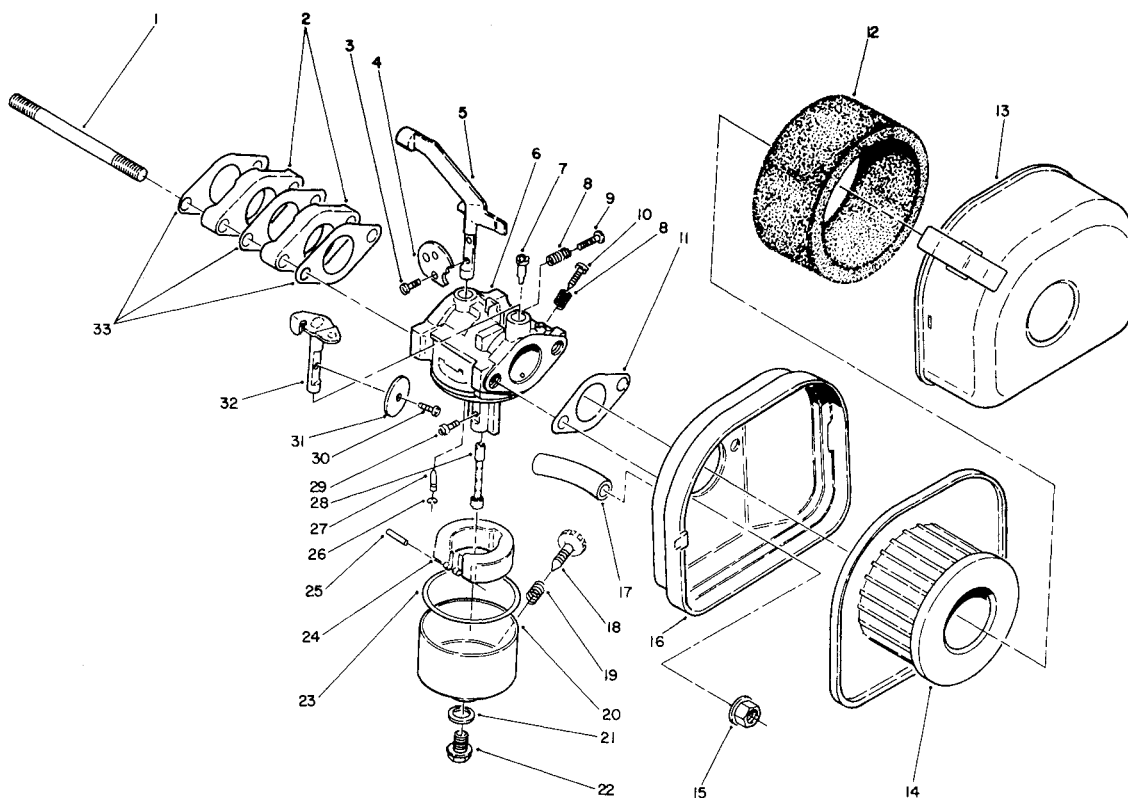


T-0954-90

ENGINE ASSEMBLY (Continued) (Kawasaki Model FG150G-BS00)

Ref. No.	Part No.	Description	No. Used
1	314401-5135A	Washer	1
2	315801-5110A	Governor Assembly	1
3	314401-5121B	Sleeve	1
4	315601-5147E	Cover	1
5	315501-5122C	Arm — Pivot	1
6	314405-3092A	Screw	3
7	92144-2004	Spring	2
8	214B0518	Screw — Pan Hd	2
9	315615-5335A	Bracket	1
10	92037-2020	Clamp	1
11	411B0500	Washer — Flat	1
12	315501-5381A	Bolt	1
13	92015-2120	Nut	1
14	214B0408	Screw — Pan Hd	1
15	314401-5383A	Washer	1
16	13169-2113	Plate	1

Ref. No.	Part No.	Description	No. Used
17	314401-5388A	Spring — Washer	1
18	315601-5317A	Spring	1
19	314401-5385A	Nut	1
20	92026-2158	Spacer	1
21	315601-5311D	Lever	1
22	130B0612	Bolt — Flanged	2
23	314601-5314A	Spring	1
24	49046-2091	Rod — Governor	1
25	314601-5314A	Spring	1
26	311B0600	Nut Hex	1
27	411B0600	Washer — Flat	1
28	314601-5211A	Arm — Governor	1
29	92002-2269	Bolt	1
30	554A0600	Pin — Snap	1
31	410B0600	Washer — Flat	1



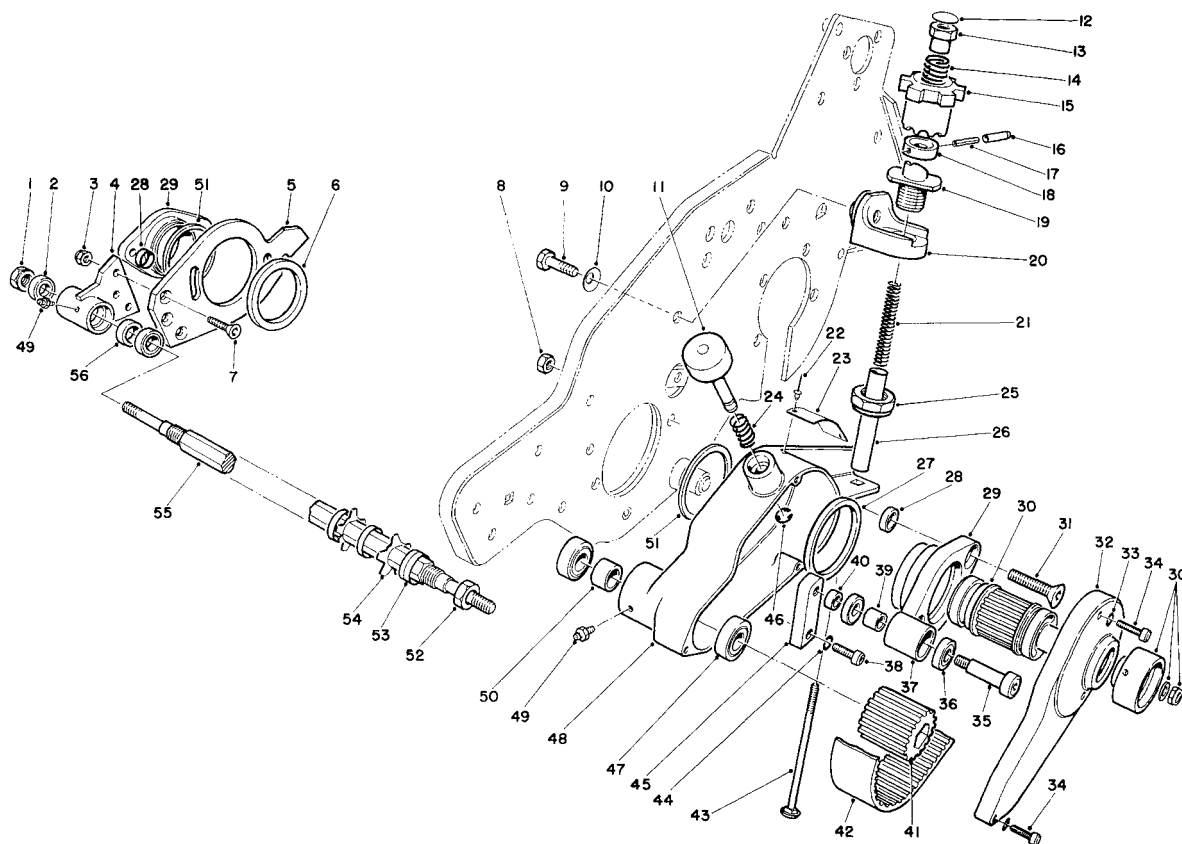
T-0953-90

ENGINE ASSEMBLY (Continued) (Kawasaki Model FG150G-BS00)

Ref. No.	Part No.	Description	No. Used
1	172G0685	Stud	2
2	315601-6181A	Insulator	2
3	314572-6137A	Screw	2
4	16126-2058	Valve — Choke	1
5	315622-6142A	Shaft — Carburetor	1
6		Carburetor Body	1
7	312759-6112-00	Jet — Pilot, #35	1
8	312750-6116-00	Spring	2
9	214B0412	Screw — Pan Hd	1
10	313650-6114-00	Screw — Pilot	1
11	11009-2127	Gasket — Air Filter	1
12	315510-1313A	Element — Air Filter	1
13	11012-2248-9H	Cap — Air Filter	1
14	3144AA-B12A	Element — Air Filter	1
15	92015-1193	Nut	2
16	11011-2187	Case — Air Filter	1
17	702A071000	Tube — Rubber	1
18	315822-6133A	Screw	1
19	313122-6116-00	Spring	1

Ref. No.	Part No.	Description	No. Used
20	315635-6130A	Chamber — Float (Incl. Ref. #18 & 19)	1
21	314499-6159A	Gasket	1
22	92150-2098	Bolt	1
23	314598-6128A	Gasket	1
24	16031-2062	Float	1
25	314499-6127A	Pin	1
26	315721-6134A	Snap Ring	1
27	314595-6122A	Valve — Float	1
28	49121-2102	Nozzle — Main, #88	1
29	314310-6137A	Screw	1
30	92063-2138	Jet — Main #72.5	1
31	312750-6101A	Valve — Throttle, #130	1
32	314621-6139A	Shaft — Carburetor	1
33	315601-6184A	Gasket	3
*	15001-2702	Carburetor Assembly (Complete)	1
*	11010-2354-9H	Air Filter Assembly (Complete)	1

* Not Illustrated



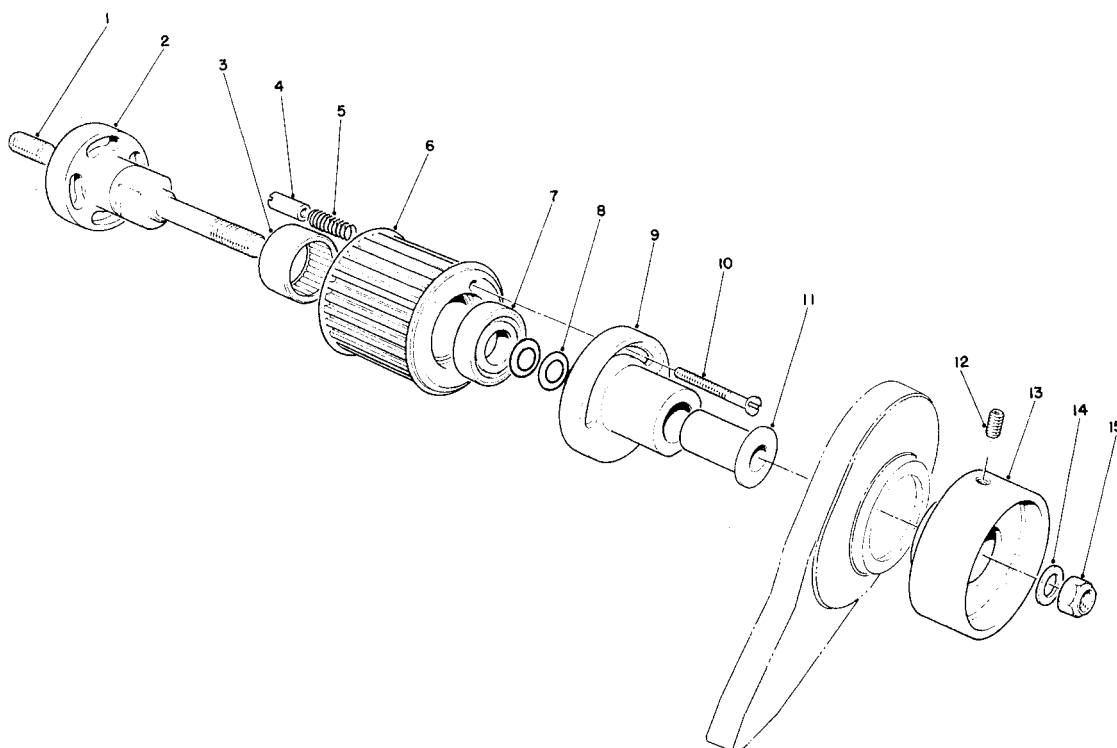
T-0942-90

GROOMING REEL KIT MODEL 04125 (Optional)

Ref. No.	Part No.	Description	No. Used
1	3296-62	Nut	1
2	251-327	Bearing — Ball	2
3	3296-4	Nut — Lock	3
4	65-9220	Housing — Bearing	1
5	65-8060	Plate — Side	1
6	65-9860	Bearing	1
7	3289-21	Screw — Hex Socket, Flat Hd	3
8	32152-2	Nut — Lock	4
9	323-34	Screw — Cap, Hex Hd	2
10	3290-455	Washer — Belleville	2
11	65-9930	Cap	1
12	284-3	Plug	2
13	65-9570	Driver	2
14	65-9580	Spring	2
15	65-9560	Knob — Adjustment (Incl. Ref. #12-14)	2
16	2410-68	Cover — Pin	2
17	32121-15	Pin — Roll	2
18	65-9550	Cap	2
19	65-9830	Ramp	2
20	65-8090	Block — Mounting	2
21	65-9810	Spring	2
22	3290-271	Rivet — Pop	2
23	65-9950	Plate — Caution	1
24	65-9940	Spring	1
25	3296-49	Nut — Lock	2
26	65-8110	Spacer — Spring	2
27	65-9860	Bearing	1
28	65-9820	Spacer	4
29	65-8160	Adapter	2

Ref. No.	Part No.	Description	No. Used
30		Clutch Assembly	1
31	3289-23	Screw — Socket, Flat Hd	2
32	65-9710	Cover — Belt	1
33	3253-12	Washer — Lock	3
34	3274-13	Screw — Cap, Soc Hd	3
35	65-9340	Screw — Shoulder	1
36	251-328	Bearing	2
37	65-9320	Pulley — Idler	1
38	3274-10	Screw — Cap, Soc Hd	1
39	65-9980	Spacer — Pulley, Idler	1
40	65-9330	Spacer	1
41	65-9290	Pulley — Driven	1
42	65-9700	Belt	1
43	65-8120	Bolt — Carriage	2
44	3253-4	Washer — Lock	1
45	65-9310	Block — Idler	1
46	32120-18	Ring — Retaining	1
47	251-327	Bearing	2
48	65-8070	Housing — Belt Drive	1
49	302-5	Fitting — Grease	2
50	65-9300	Spacer — Pulley, Driven	1
51	65-8010	Ring — Adapter	2
52	3296-60	Nut — Lock	2
53	70-1350	Spacer (41 Blade Reel)	84
54	70-1170	Blade (41 Blade Reel)	41
55	75-9980	Shaft	1
56	65-9300	Spacer	1
*	74-3290	Groomer Reel Assy (41 Blade Reel) (Incl. Ref. #52-55)	1

* Not Illustrated



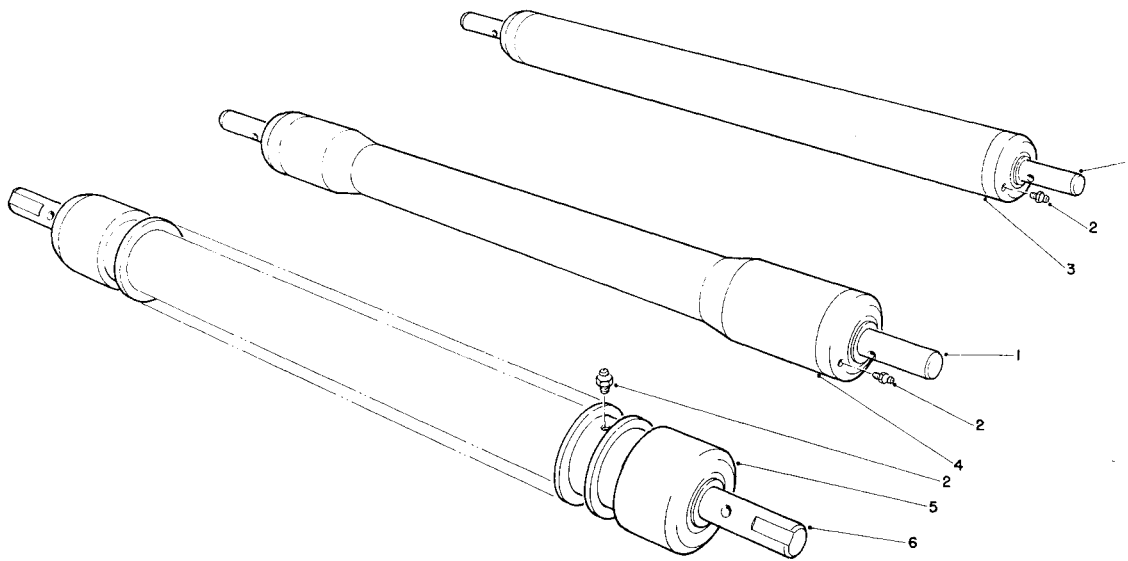
T-0946-90

CLUTCH ASSEMBLY

Grooming Reel Kit Model 04125 (Optional) (Continued)

Ref. No.	Part No.	Description	No. Used
1	75-9540	Screw — Set, Soc Hd	1
2	65-8130	Adapter	1
3	252-110	Bearing — Needle	1
4	65-9660	Pin — Clutch	1
5	65-9670	Spring — Compression	1
6	65-9630	Pulley — Driver	1
7	251-327	Bearing — Roller	1
8	3290-480	Washer — Belleville	2

Ref. No.	Part No.	Description	No. Used
9	65-9640	Disc — Release, Clutch	1
10	65-9650	Screw — Special	1
11	256-300	Bushing — Flange	1
12	32110-13	Screw — Set	2
13	65-9680	Knob — Clutch	1
14	3256-24	Washer — Flat	1
15	3296-39	Nut — Lock	1



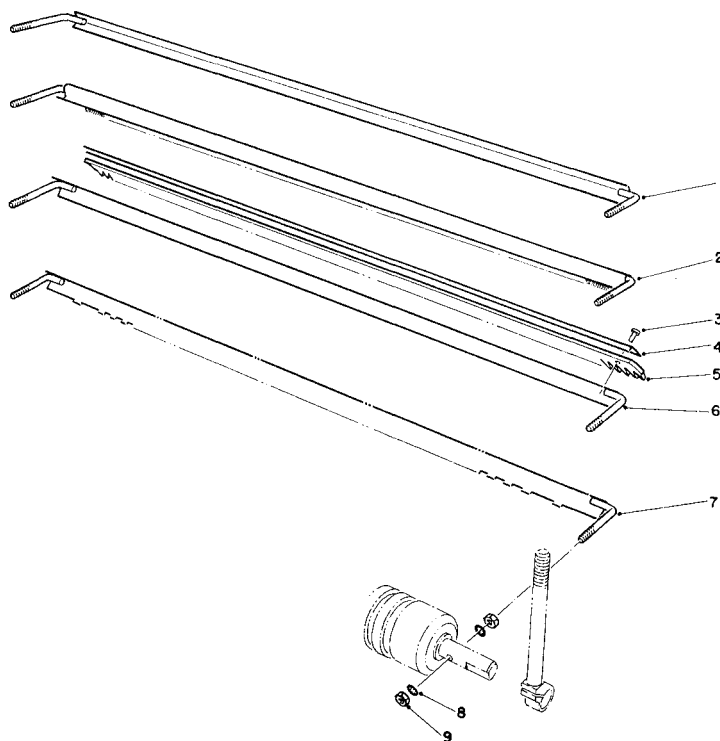
T-0956-90

CUTTING UNIT ROLLER OPTIONS

Ref. No.	Part No.	Description	No. Used
1	52-3180	Bearing — Roller	2
2	302-5	Fitting — Grease	2
3	52-3170	Roller Assembly (Incl. Ref. #1 & 2)	1
4	52-3590	Swaged Roller Assembly (Incl. Ref. #1 & 2)	1

Ref. No.	Part No.	Description	No. Used
5	71-1550	Wiehle Roller Assembly (Incl. Ref. #2 & 6)	1
6	52-3210	Bearing — Roller, Wiehle	2
*	04118	Wiehle Roller Carton of 1	1
*	65-8320	Bar — Gauge Hoc	1
*	32122-22	Capscrew	2
*	3219-14	Locknut	2

* Not Illustrated

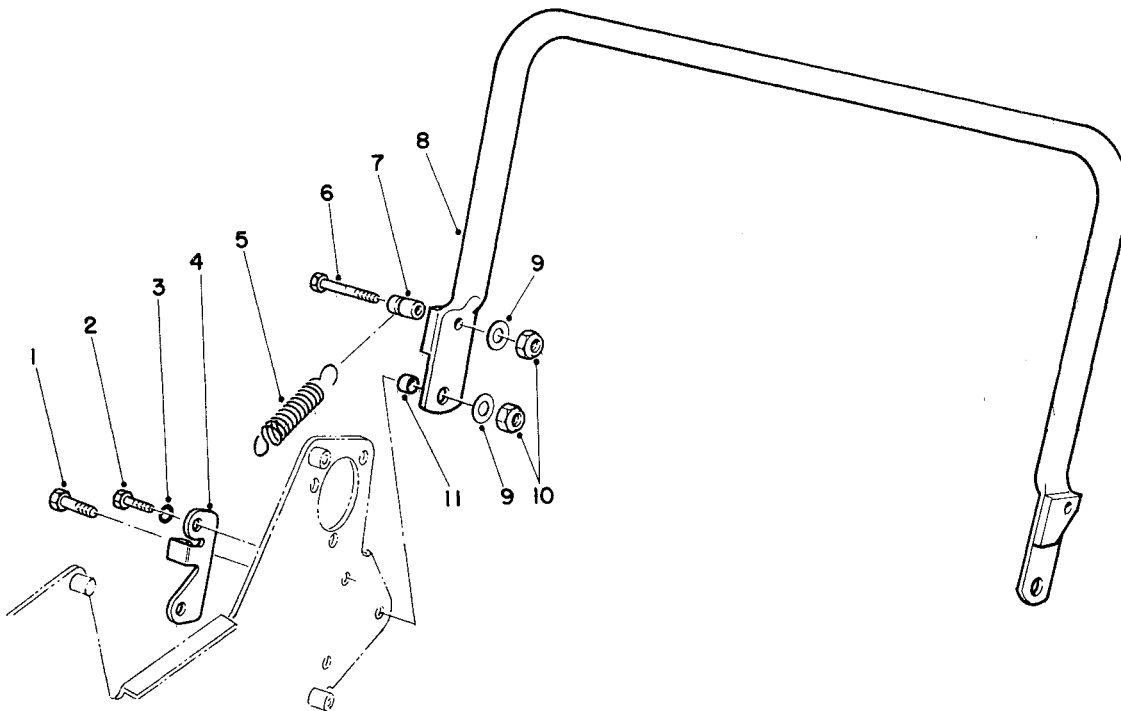


T-0955-90

SCRAPER OPTIONS

Ref. No.	Part No.	Description	No. Used
1	65-8360	Scraper — Smooth	1
2	33-1000	Scraper — Brush	1
3	3295-15	Rivet	11
4	8-2520	Support — Comb	1
5	8-2530	Comb — Urethane	1

Ref. No.	Part No.	Description	No. Used
6	11-0070	Scraper Comb Assembly (Incl. Ref. #3-5)	1
7	65-8340	Scraper — Wiehle Roller	1
8	3254-8	Washer — Lock, Int. Tooth	4
9	3219-1	Nut — Hex	4



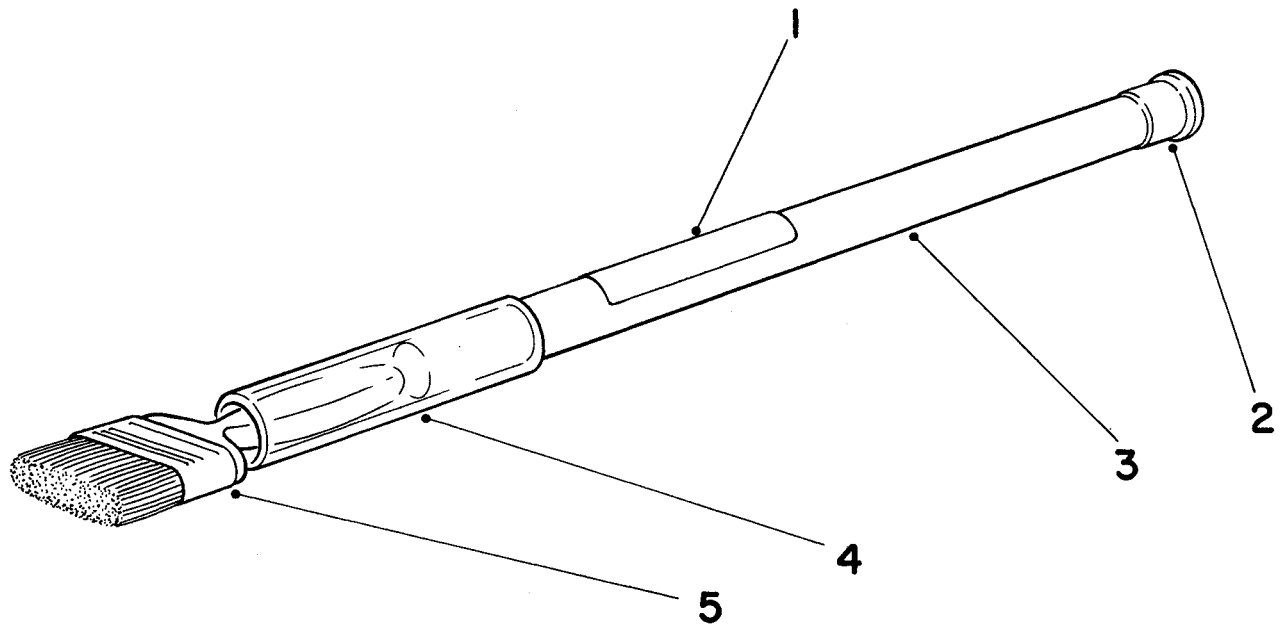
T-0948-90

KICKSTAND WHEEL & KICKSTAND KIT MODEL NO. 04120 (Optional) (Continued)

Ref. No.	Part No.	Description	No. Used
1	322-5	Screw — Cap, Hex Hd	2
2	323-5	Screw — Cap, Hex Hd	2
3	3253-21	Washer — Lock	2
4	65-7890	Bracket — Spring	1
5	65-7880	Spring — Extension	1
6	322-10	Screw — Cap, Hex Hd	1

Ref. No.	Part No.	Description	No. Used
7	65-7900	Retainer — Spring	1
8	65-7850	Kickstand W.A.	1
9	3256-2	Washer — Flat	3
10	3296-29	Nut — Lock	3
11	65-7910	Spacer	2

* Not Illustrated



SPECIAL TOOL BACKLAPPING BRUSH ASSEMBLY NO. 29-9100

T-0731-90

Ref. No.	Part No.	Description	No. Used
1	12-9140	Decal	1
2	2410-18	Plug	1
3	29-9080	Handle	1

Ref. No.	Part No.	Description	No. Used
4	29-9090	Hose — Handle	1
5	36-4310	Brush	1