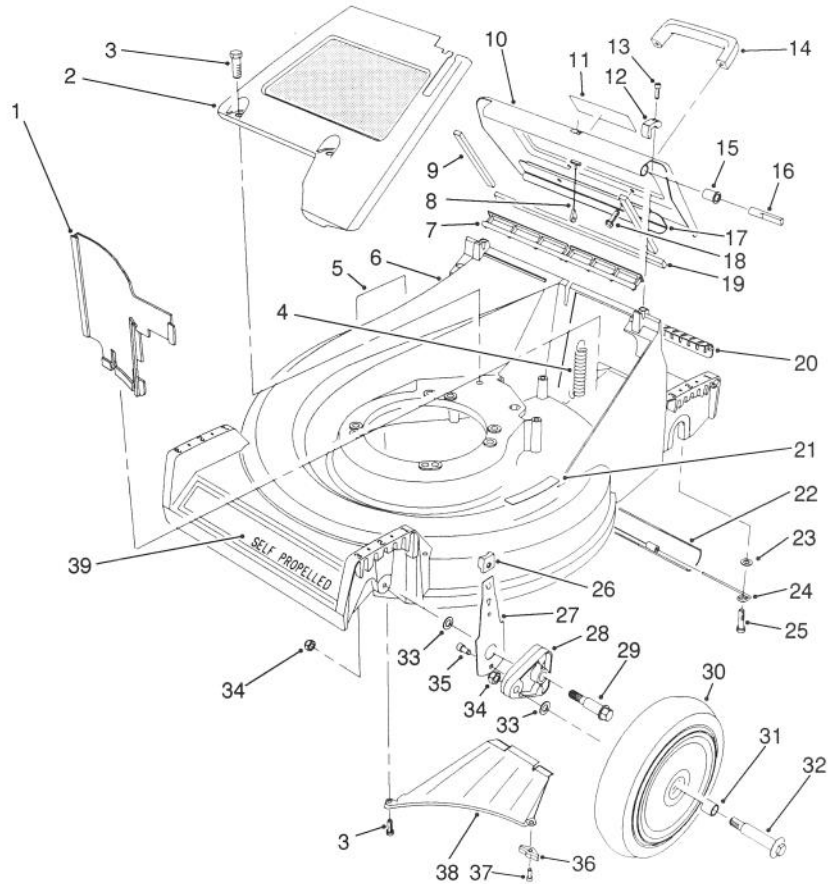


TORO[®]

MODEL NO. 26623-000001 & UP

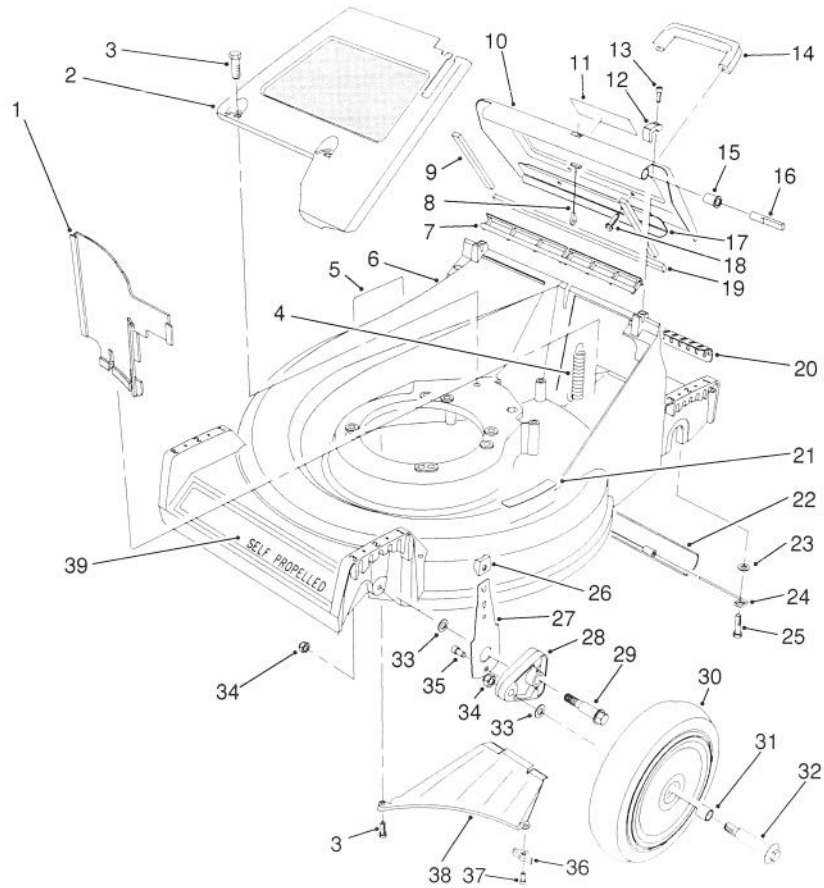
**PARTS
CATALOG****21" S.P. REAR BAGGER**

C-0560

HOUSING ASSEMBLY

Ref. No.	Part No.	Description	No. Used	Ref. No.	Part No.	Description	No. Used
1	66-0020	Panel - Vertical	1	17	66-0610	Brace - Door	1
2	65-5660	Panel - Screen	1	18	46-8091	Screw - Handle	2
3	32144-70	Screw - Cap Hex. Hd.	3	19	65-5490	Seal - Door (End)	1
4	65-5360	Spring - Extension	1	20	65-5150	Cover - Access	1
5	56-6270	Decal - Danger	1	21	62-3950	Decal - Step Pad	1
6	13-5869	21" Housing Assembly (Incl. Ref. #5, & 21)	1	22	65-5350	Shield - Trailing	1
7	65-5160	Seal - Door	1	23	3256-23	Washer - Flat	2
8	65-5370	Cable - Door	1	24	76-1980	Hanger - Shield	2
9	65-5480	Seal - Door Side	2	25	5-2490	Screw - Shoulder	2
10	13-5889	Door - Discharge (Incl. Ref. #9, 11, 17 & 19)	1	26	25-7740	Knob - Spring Arm	2
11	71-8370	Decal - Warning	1	27	66-0540	Arm - Front Spring	2
12	65-5140	Clamp - Hinge	2	28	66-0580	Arm - Front Pivot	2
13	65-5210	Screw - Hex. Socket Hd.	2	29	66-0560	Screw - Shoulder	2
14	65-5100	Handle - Door	1	30	11-9509	Wheel & Tire Assembly (Incl. Ref. #29)	2
15	65-5460	Bushing - Door	2	31	27-6250	Bushing - Wheel	4
16	65-5290	Pin - Hinge	2	32	27-6231	Bolt - Wheel	2
				33	40-1940	Washer - Wheel	4

TPS

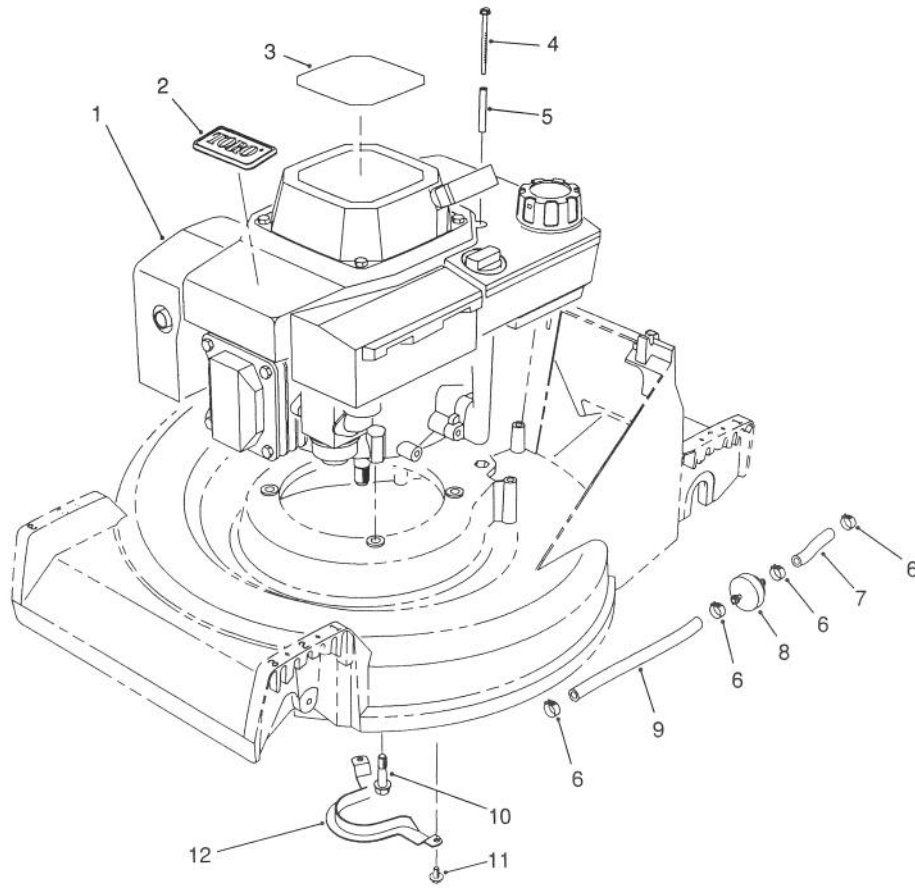


C-0560

HOUSING ASSEMBLY(Continued)

Ref. No.	Part No.	Description	No. Used
34	52-3620	Nut - Lock	4
35	65-5220	Screw - Cap Socket Hd.	2
36	66-0640	Bracket - Discharge	1

Ref. No.	Part No.	Description	No. Used
37	65-5221	Screw - Bracket	1
38	65-5010	Ramp - Discharge	1
39	70-7590	Decal - 53cm	1

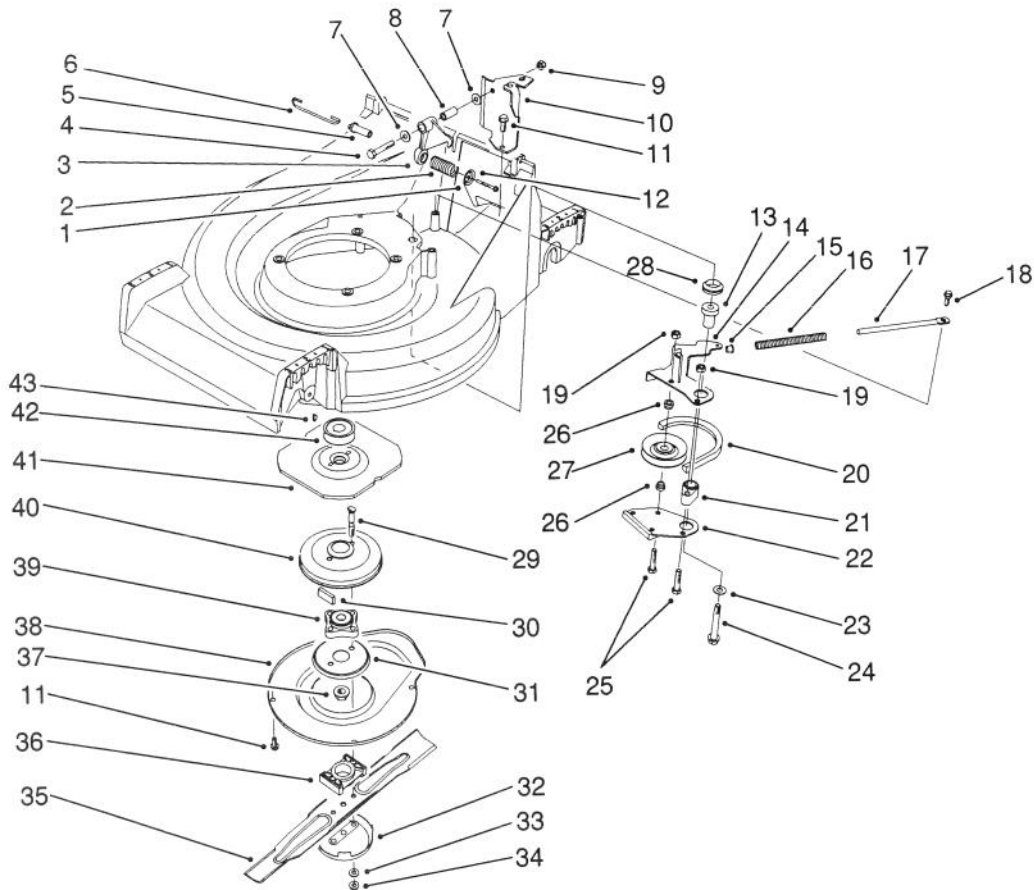


C-0181

ENGINE ASSEMBLY

Ref. No.	Part No.	Description	No. Used	Ref. No.	Part No.	Description	No. Used
1	72-4141	Engine - OHV	1	8	56-6360	Filter - Fuel	1
2	46-8290	Plate - TORO Logo	1	9	51-3214	Line - Fuel	1
3	57-3120	Decal - Recoil	1	10	11-0590	Screw - Cap Hex. Hd.	3
4	56-6610	Screw - Thread Forming	2	11	32144-70	Screw - Cap Hex. Hd.	2
5	57-3830	Spacer - Tubular	2	12	66-0570	Guide - Belt	1
6	2412-95	Clamp - Fuel Line	4	*	75-9850	Tube - Oil Drain	1
7	51-3211	Line - Fuel	1				

*Not Illustrated

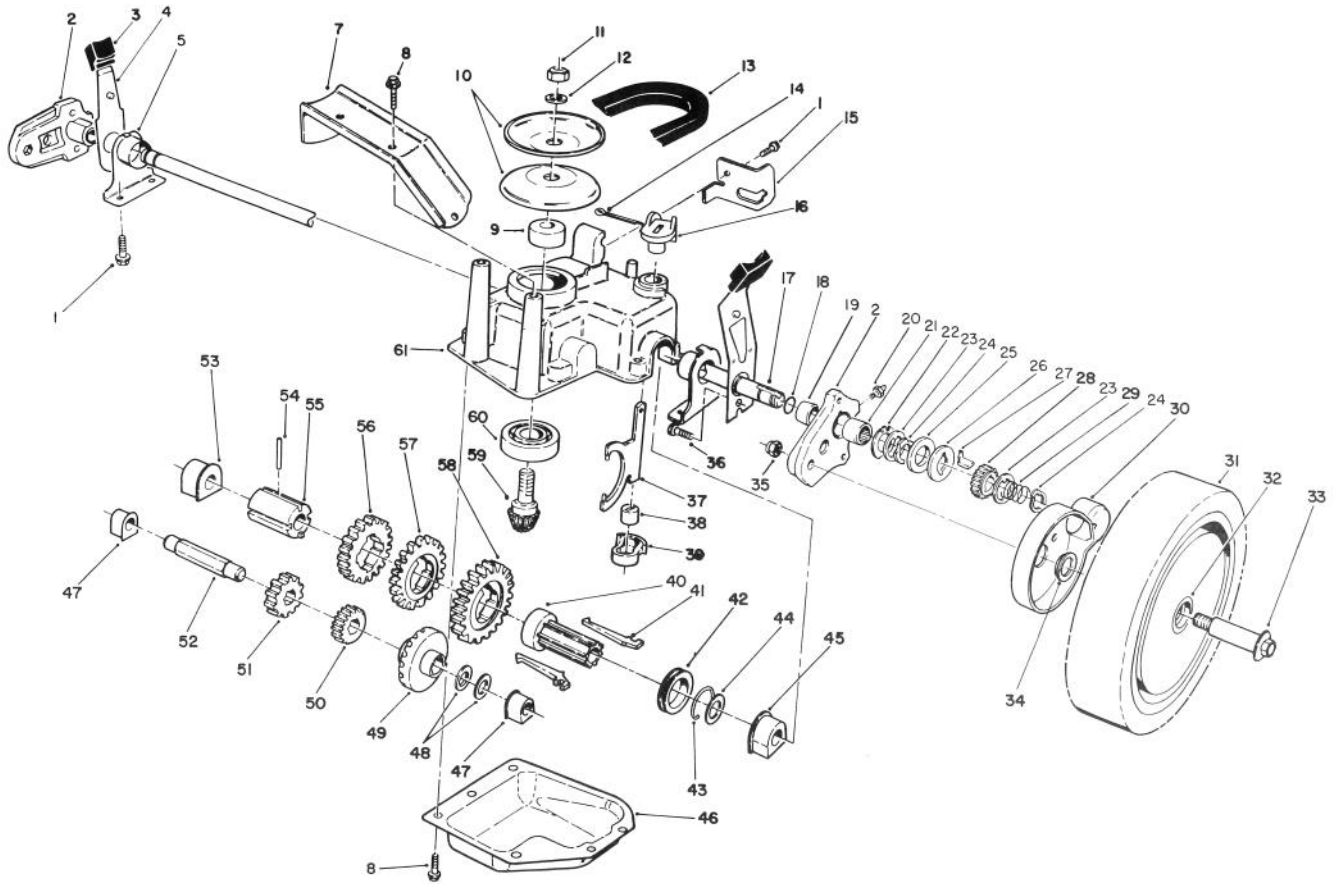


C-0525

BLADE BRAKE CLUTCH ASSEMBLY

Ref. No.	Part No.	Description	No. Used
1	65-5280	Retainer - Spring	1
2	71-3630	Spring - Compression	1
3	65-5700	Crank	1
4	322-21	Screw - Cap Hex. Hd.	1
5	71-3660	Pin - BBC Spring	1
6	71-3650	Link - Control	1
7	3256-23	Washer - Flat	2
8	65-5690	Bushing - Bellcrank	1
9	32128-44	Nut - Lock	1
10	66-0030	Bracket - Cable Support	1
11	32144-70	Screw - Cap Hex. Hd.	5
12	46-7040	Screw - Cap Hex. Hd.	1
13	65-5720	Bushing - BBC	1
14	66-0090	Lever - Brake	1
15	66-0350	Bushing - Flange	1
16	71-3640	Spring - Compression	1
17	65-5320	Rod - Brake Spring	1
18	65-5670	Bolt - Shoulder	1
19	3296-42	Nut - Lock	2
20	65-5740	Belt - BBC	1
21	65-5070	Hub - Brake Plate	1
22	65-5780	Brake Plate Assembly	1

Ref. No.	Part No.	Description	No. Used
23	65-5380	Washer	1
24	11-0580	Screw - Cap Hex. Hd.	1
25	321-13	Screw - Cap Hex. Hd.	2
26	65-5130	Hub - Idler Pulley	2
27	46-5650	Idler Pulley Assembly	1
28	253-151	Seal - V-Ring	1
29	42-3190	Screw - BBC	2
30	52-3480	Dampner - Vibration	2
31	65-5330	Screen - BBC	1
32	42-0910	Cup - Anti Scalp	1
33	40-1940	Washer - Flat	2
34	3296-6	Nut - Lock	2
35	62-7700	Blade - 21"	1
36	62-4280	Spacer - Blade	1
37	3296-33	Nut - Lock	1
38	65-5200	Cover - BBC	1
39	42-6890	Hub Assembly	1
40	62-3890	Drum - Brake	1
41	65-5300	Flywheel - BBC	1
42	62-7560	Pulley - Engine	1
43	3257-3	Key - Woodruff	1

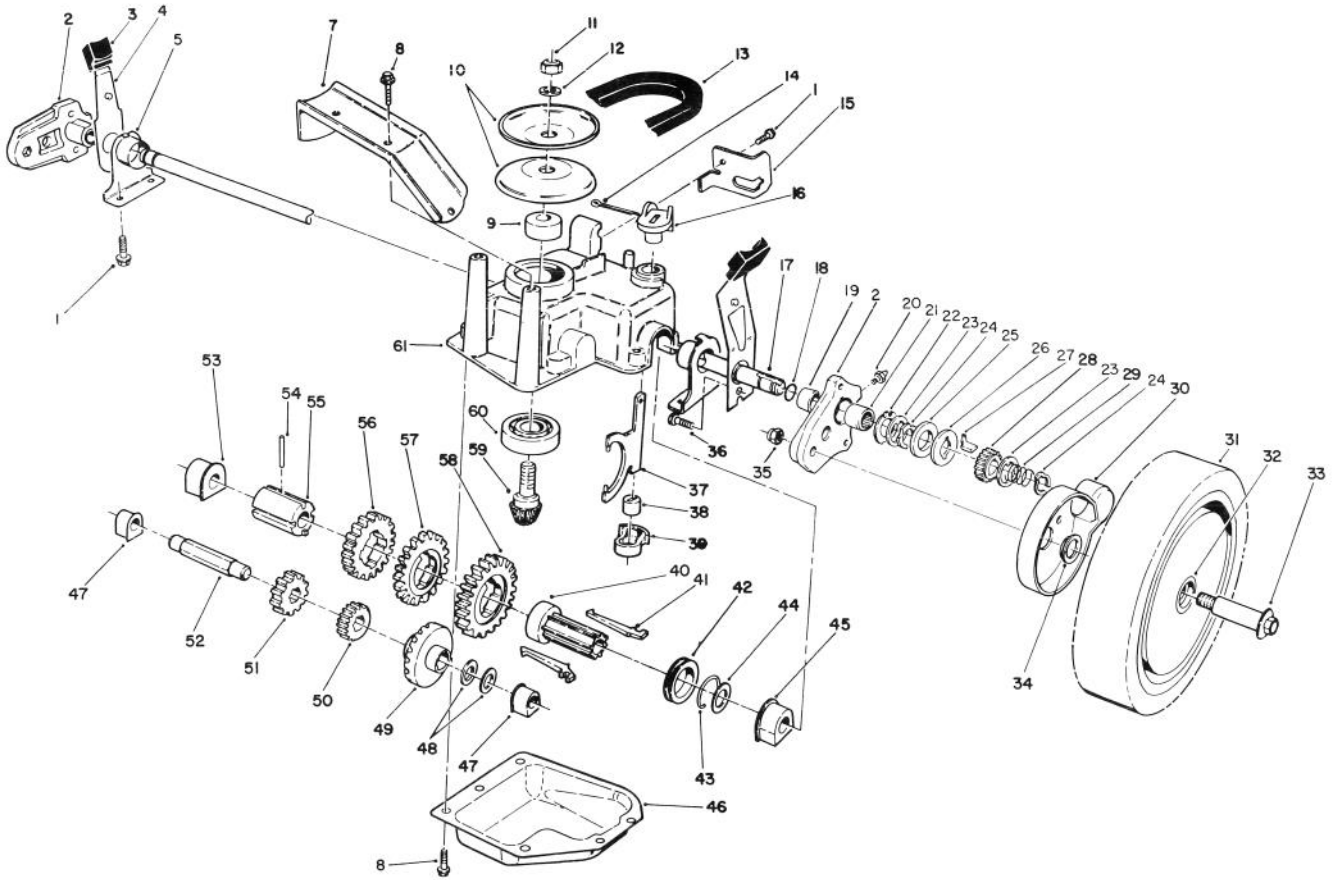


C-0549

GEAR CASE ASSEMBLY

Ref. No.	Part No.	Description	No. Used	Ref. No.	Part No.	Description	No. Used
1	32144-70	Screw - Hex. Washer Hd.	3	24	65-2720	Ring - Retaining	4
2	65-5042	Pivot Arm Assembly (Incl. Ref. #19-21)	2	25	65-4710	Ring - Friction	2
3	25-7740	Knob - Arm	2	26	65-4760	Washer -Clutch	2
4	65-5440	Spring Arm Assembly	2	27	66-6050	Key - Rocking (L.H.)	1
5	66-0360	Cap - End	2	*	66-6040	Key - Rocking (R.H.)	1
7	65-5190	Bracket - Belt Guide	1	28	65-4750	Pinion	2
8	49-2040	Screw - Self Tapping	8	29	65-4720	Spring - Compression	2
9	62-6660	Spacer	1	30	74-1660	Cover - Wheel	2
10	60-8840	Pulley - Half	2	31	11-9519	Wheel Tire & Gear Assy. (Incl. Ref. #32)	2
11	3296-5	Nut - Lock	1	32	27-6250	Bushing - Wheel	4
12	3256-24	Washer - Flat	1	33	27-6231	Bolt - Wheel	2
13	66-0210	V-Belt	1	34	74-1670	Spacer - Wheel Cover	2
14	3272-5	Pin - Cotter	1	35	3296-6	Nut - Lock	2
15	76-2930	Retainer - Cable	1	36	65-5220	Screw - Cap Socket Hd.	2
16	76-0920	Lever - Shift	1	37	60-8870	Yoke - Shift	1
17	65-4770	Shaft - Output	1	38	29-9570	Bushing - Yoke	1
18	237-153	Seal - O-Ring	2	39	60-8810	Retainer - Shift Fork	1
19	70-9760	Bushing - Sleeve	2	40	76-0780	Sleeve - Shift Key	1
20	302-56	Fitting - Grease	2	41	76-0760	Key - Shift	2
21	48-2060	Bearing - Needle	2	42	76-0770	Collar - Shift	1
22	65-4730	Washer - Thrust (Inner)	2	43	65-5250	Clip - Spring	1
23	65-4740	Washer - Thrust (Keyed)	4	44	36-4780	Washer - Thrust	1

*Not Illustrated

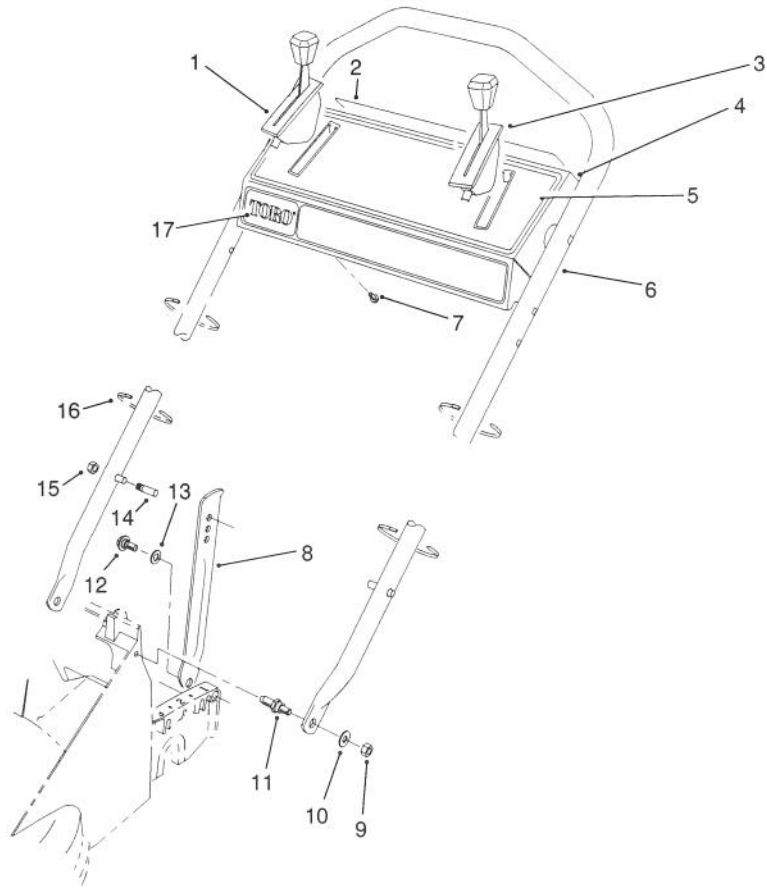


C-0549

GEAR CASE ASSEMBLY (Continued)

Ref. No.	Part No.	Description	No. Used	Ref. No.	Part No.	Description	No. Used
45	60-8770	Bushing - Output Shaft	1	54	32121-120	Pin - Coil	1
46	60-8730	Cover - Gear Case	1	55	60-8790	Sleeve - Gear	1
47	60-8750	Bushing - Intrmdt. Shaft	2	56	55-3810	Gear - 39T (3rd Gear)	1
48	36-4791	Washer - Thrust	2	57	55-3790	Gear - 44T (2nd Gear)	1
49	55-3760	Gear - Pinion 15T	1	58	55-3770	Gear - 49T (1st Gear)	1
50	55-3780	Gear - Pinion 20T	1	59	60-8890	Pinion - Bevel	1
51	55-3800	Gear - Pinion 25T	1	60	38-7820	Bearing - Ball	1
52	60-8800	Shaft - Intermediate	1	61	60-8710	Case - Gear (Upper)	1
53	60-8850	Bushing - Output Shaft	1	*	62-6673	Gear Case Assy. Complete	1

*Not Illustrated

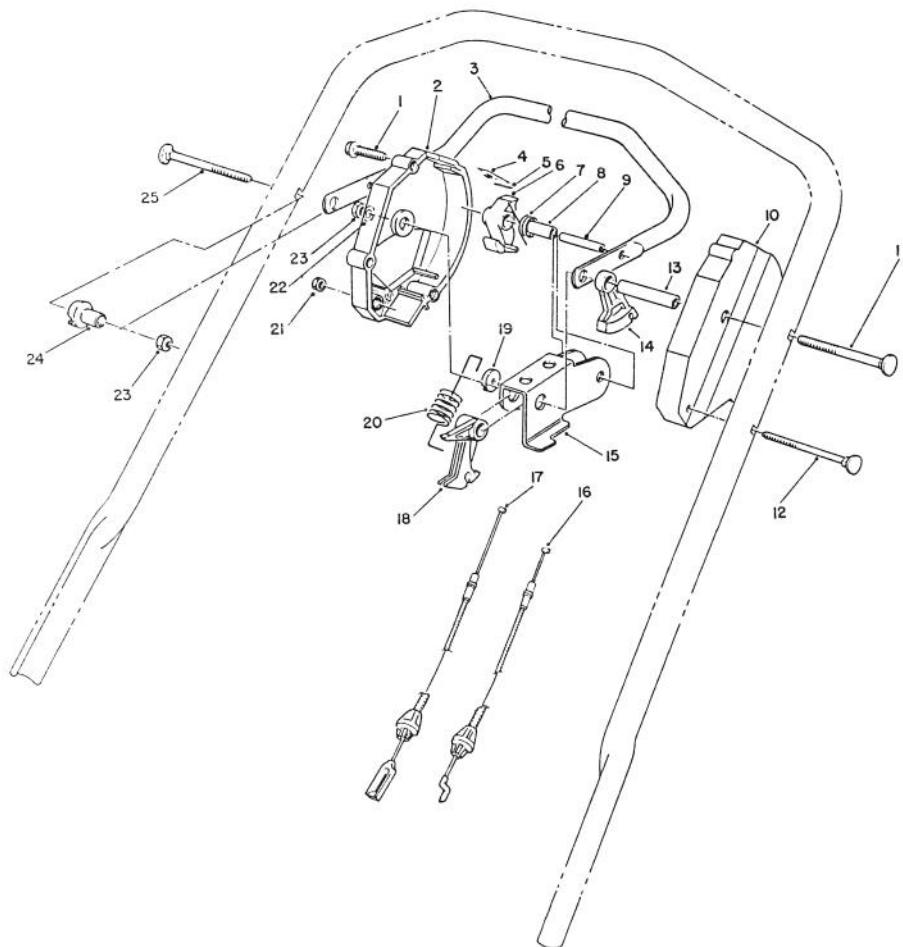


C-0173

HANDLE ASSEMBLY

Ref. No.	Part No.	Description	No. Used	Ref. No.	Part No.	Description	No. Used
1	76-2710	Control - Ground Speed Bend Type #3 Sheath Lg. 51-1/4" Wire Lg. 2-1/4"	1	6	66-0320	Handle	1
2	66-1790	Decal - Danger	1	7	32104-76	Screw - Self Tapping	4
3	66-0230	Control - Throttle Bend Type #1 Sheath Lg. 44-3/4" Wire Lg. 2-3/4"	1	8	65-5730	Latch - Handle	2
4	13-4339	Control Panel Assembly (Incl. Ref. #2 & 5)	1	9	3296-29	Nut - Lock	2
5	66-0260	Decal - Instruction	1	10	3256-23	Washer - Flat	2
				11	66-0450	Screw - Shoulder Stud	2
				12	5-2490	Screw - Shoulder	2
				13	256-313	Washer - Nylon	2
				†14	49-2750	Pin - Handle	2
				15	3296-47	Nut - Lock	2
				16	3290-378	Tie - Cable	4
				17	66-1770	Decal - TORO	1

†Service Replacement Parts

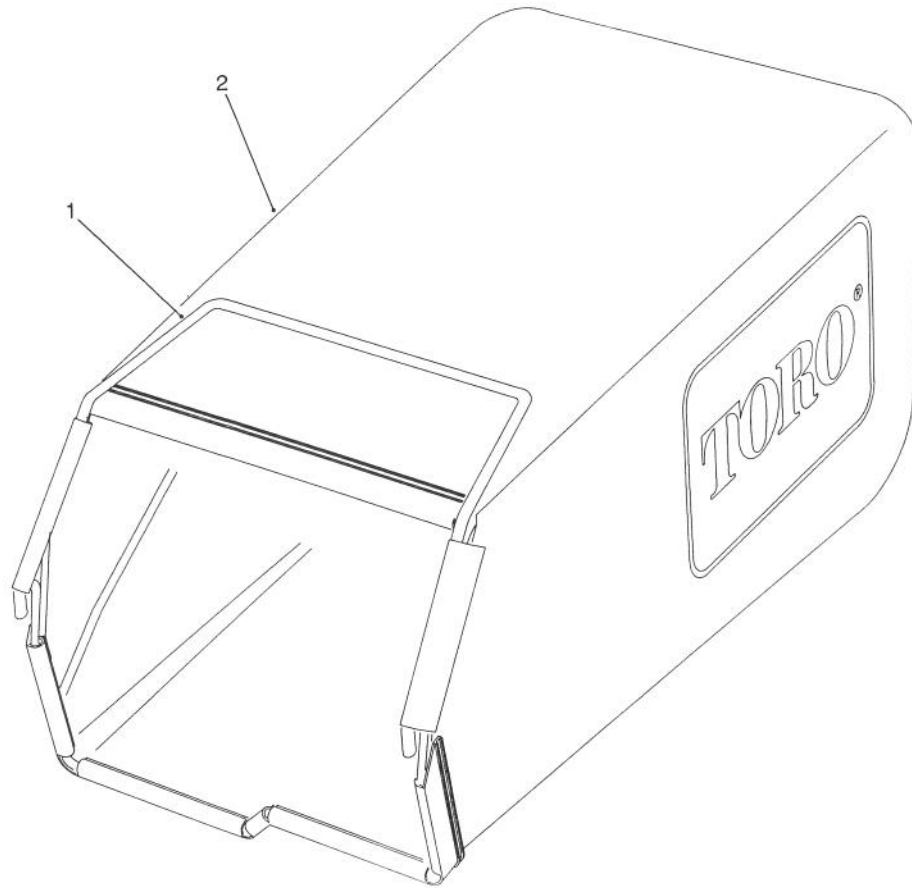


C-0153

TRACTION CONTROL ASSEMBLY

Ref. No.	Part No.	Description	No. Used
1	46-7040	Screw - Hex. Washer Hd.	3
2	66-0160	Housing - Control R.H.	1
3	52-7430	Control Bar Assembly	1
4	52-7410	Spring - Leaf	1
5	57-6290	Pin - Insert	1
6	46-5530	Hook - Control	1
7	46-5510	Spring - Torsion	1
8	46-5550	Bushing - Sleeve	1
9	32121-9	Pin - Coil	1
10	46-5460	Housing - Control (L.H.)	1
11	17-9425	Screw - Handle	1
12	46-6431	Screw - Handle	1
13	46-5590	Spacer	1

Ref. No.	Part No.	Description	No. Used
14	46-5520	Lever - Traction	1
15	66-0180	Rocker	1
16	77-0210	Cable - Traction	1
17	77-0190	Cable - Clutch	1
18	46-5540	Lever - Cable	1
19	66-0170	Washer - Nylon	1
20	66-0190	Spring - Detent	1
21	3296-8	Nut - Lock	1
22	3256-23	Washer	2
23	3296-29	Nut - Lock	2
24	66-0330	Support - Spacer	1
25	17-9426	Screw - Handle	1

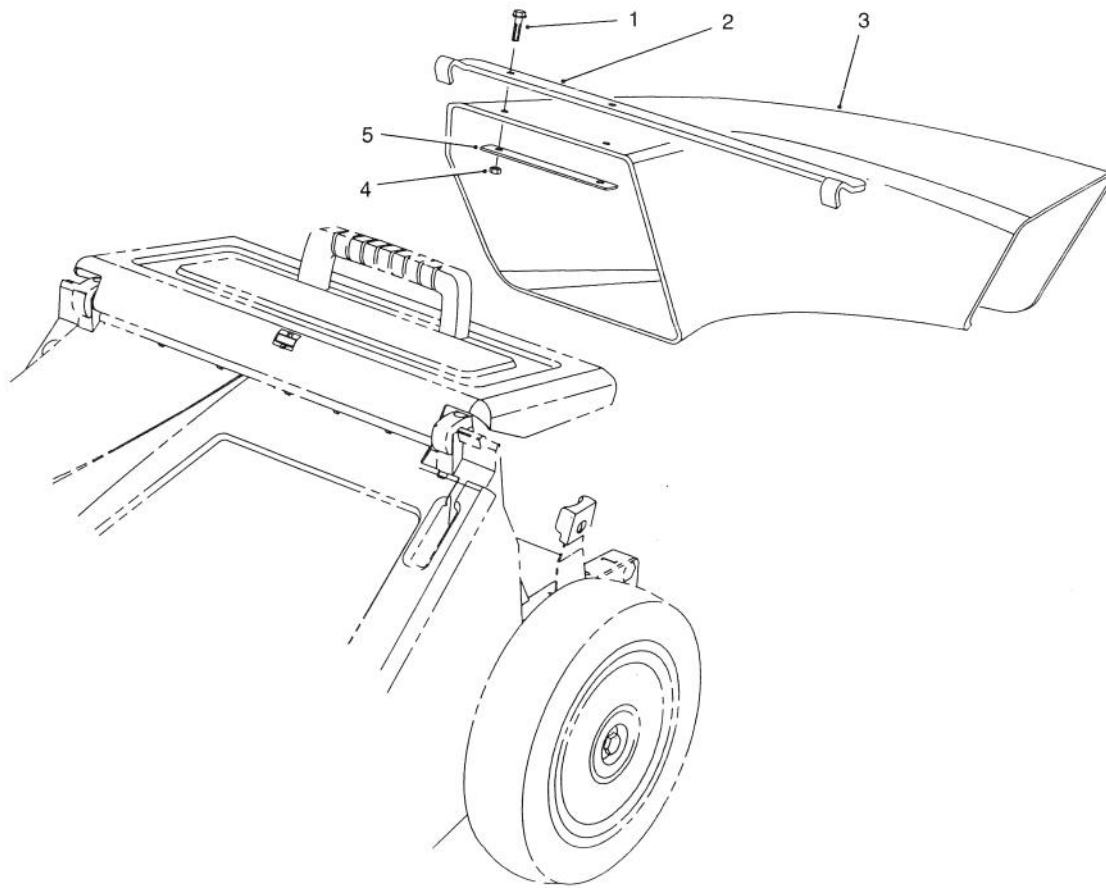


C-0168

GRASS BAG ASSEMBLY

Ref. No.	Part No.	Description	No. Used	Ref. No.	Part No.	Description	No. Used
1	76-1790	Frame - Grass Bag	1	*	13-6349	Grass Bag Assembly (Incl. Ref. #1 & 2)	1
2	66-0010	Bag	1				

*Not Illustrated

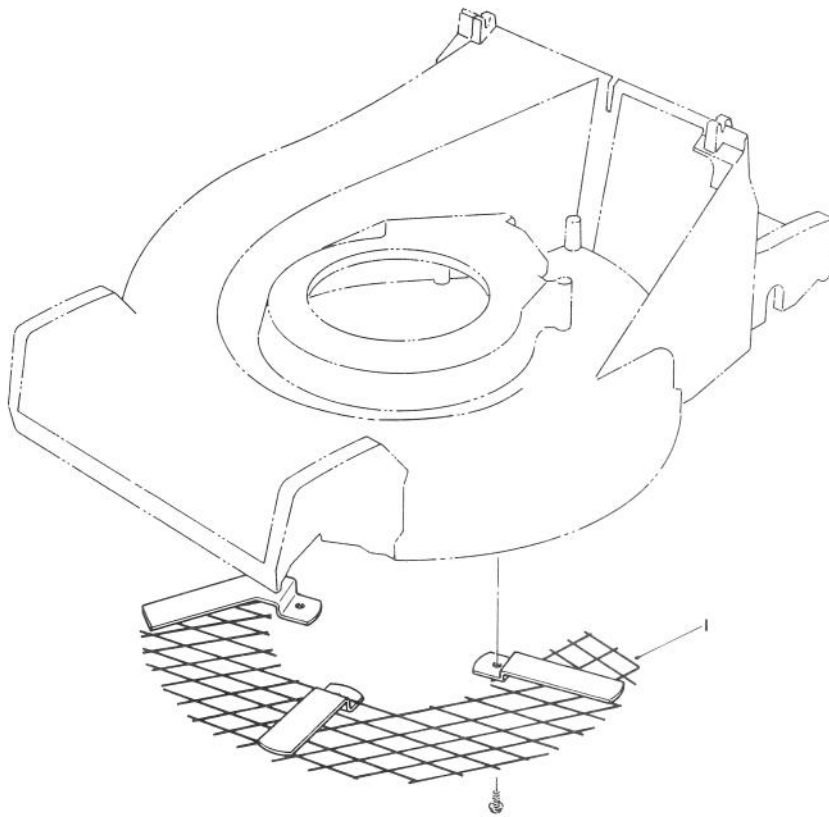


C-0169

SIDE DISCHARGE CHUTE MODEL NO. 59112 (Optional)

Ref. No.	Part No.	Description	No. Used
1	3290-126	Screw - Hex. Washer Hd.	2
2	66-0070	Bracket - Chute Hanger	1
3	65-5240	Chute - Discharge	1

Ref. No.	Part No.	Description	No. Used
4	3296-12	Nut - Lock	2
5	66-0060	Plate - Stress	1

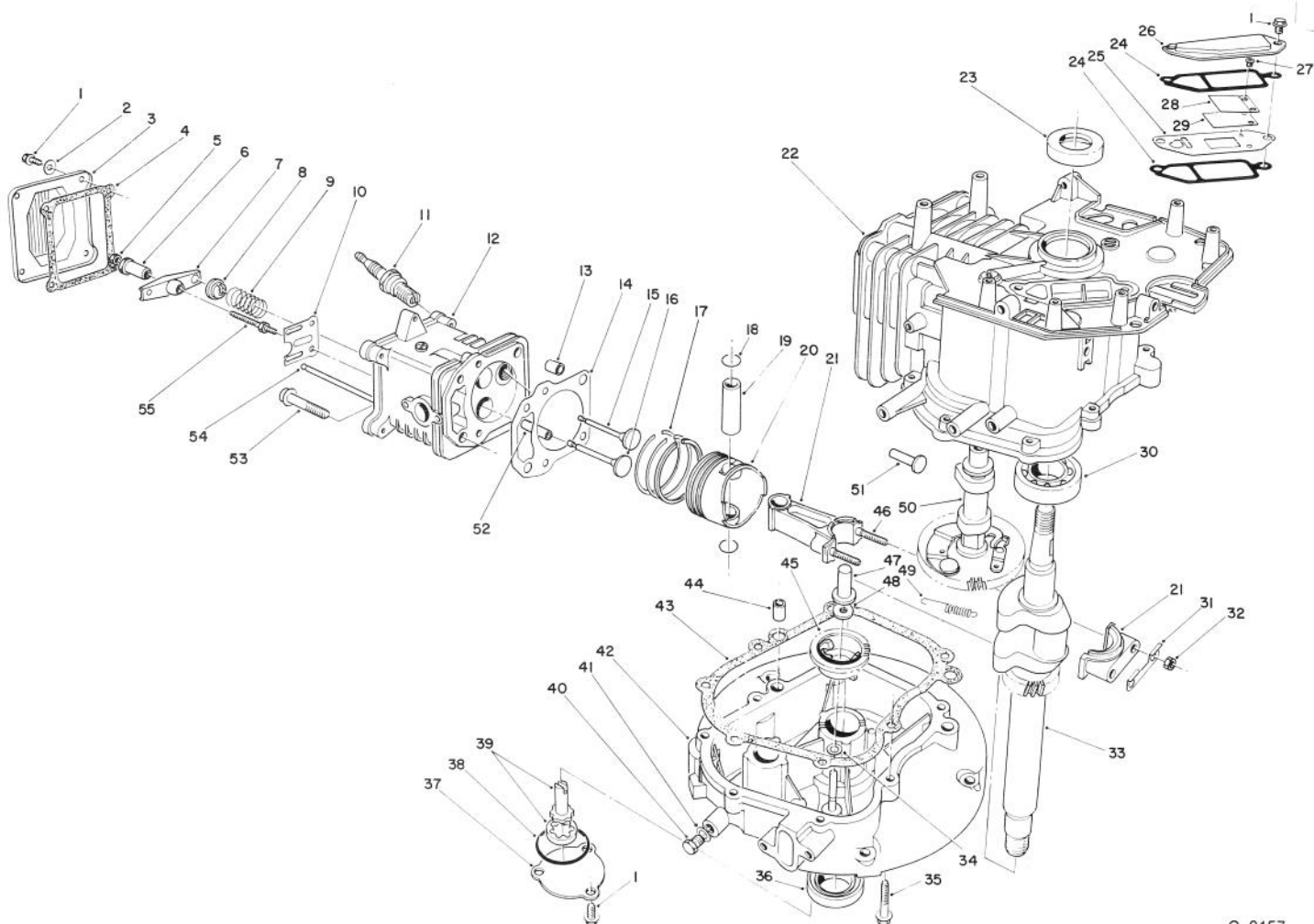


C-0542

LEAF SHREDDER Model No. 59180

Ref. No.	Part No.	Description	No. Used
1	77-0390	Shredder - Leaf	1

Ref. No.	Part No.	Description	No. Used



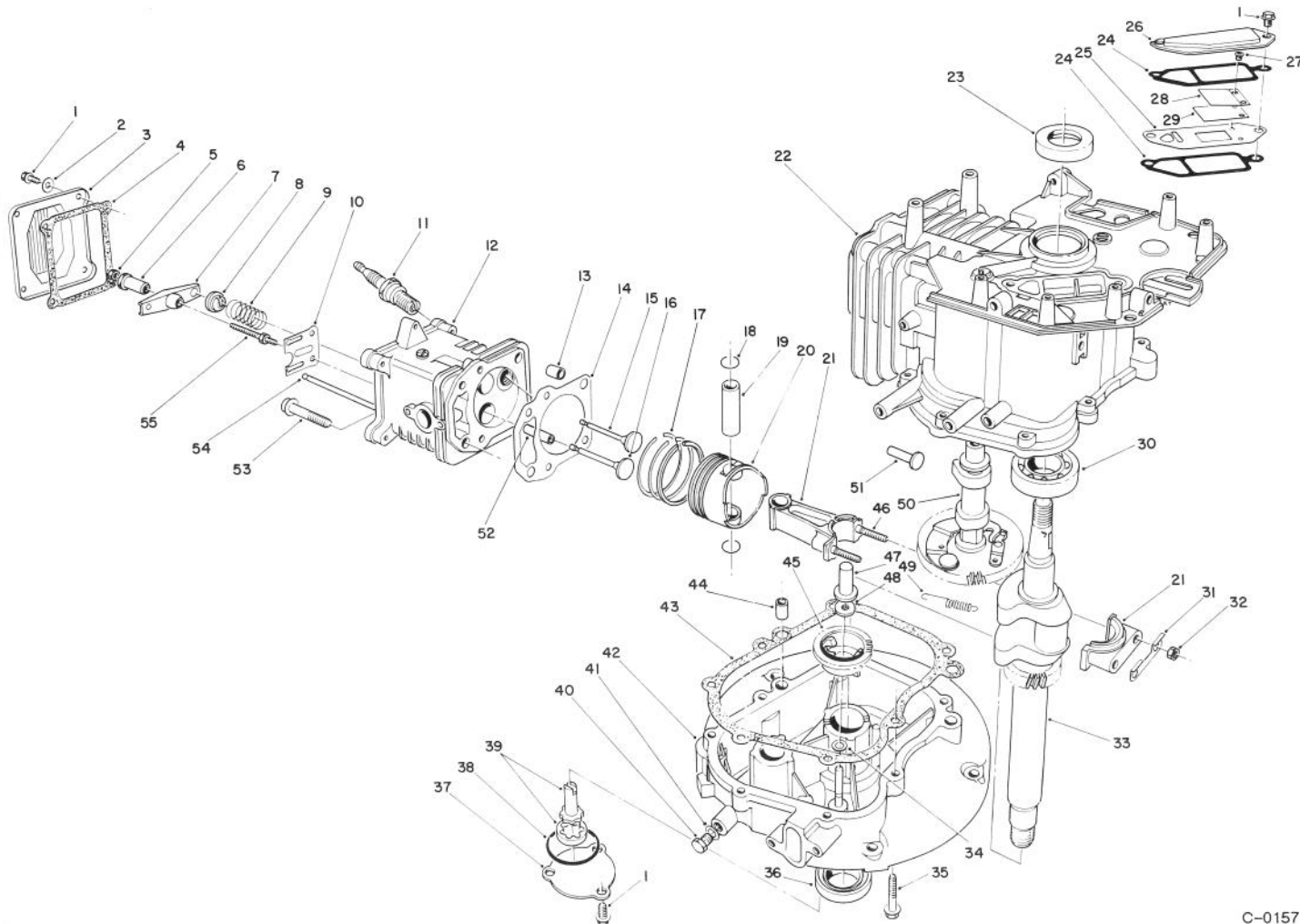
C-0157

CRANKCASE ASSEMBLY (Engine Model No. VMK9-2)

Ref. No.	Part No.	Description	No. Used
1	81-1170	Bolt	9
2	81-3790	Washer	4
3	81-3780	Cover - Rocker Arm	1
4	81-3770	Gasket - Cover	1
5	81-3760	Nut - Jam	2
6	81-3750	Pivot - Rocker Arm	2
7	81-3740	Arm - Rocker	2
8	81-3730	Retainer - Valve Spring	2
9	81-3720	Spring - Valve	2
10	81-3710	Guide - Push Rod	1
11	81-3250	Plug - Spark	1
12	81-5540	Head - Cylinder (Incl. Ref. #52)	1
13	81-3690	Pin - Dowel	2
14	81-4710	Gasket - Cylinder Head	1
*	81-3820	Gasket Set	1
15	81-3660	Valve - Exhaust	1
16	81-3670	Valve - Intake	1
17	81-3650	Piston Ring Set	1
18	50-0960	Circlip	2
19	81-3630	Pin - Piston	1
20	81-3620	Piston	1

Ref. No.	Part No.	Description	No. Used
21	81-3390	Connecting Rod Assembly (Incl. Ref. #31, 32 & 46)	1
22	81-3280	Block - Engine (Incl. Ref. #23 & 30)	1
23	81-3290	Seal - Upper Crankshaft	1
24	81-3300	Gasket - Breather	2
25		Plate - Breather	1
26	81-3320	Cover - Breather	1
27		Screw - Reed Valve	2
28		Retainer - Reed Valve	1
29		Valve - Reed	1
*	81-3370	Reed Valve Assembly (Incl. Ref. # 25 & 27-29)	1
30	81-3380	Bearing - Ball	1
31	81-3400	Plate - Lock	1
32	50-0510	Nut	2
33	81-3430	Crankshaft	1
34	81-3440	Washer	1
35	81-3450	Bolt	7
36	81-3460	Seal - Lower Crankshaft	1
37	81-3470	Cover - Oil Pump	1
38	81-3480	Seal - O-Ring	1
39	81-3490	Oil Pump Assembly	1

*Not Illustrated



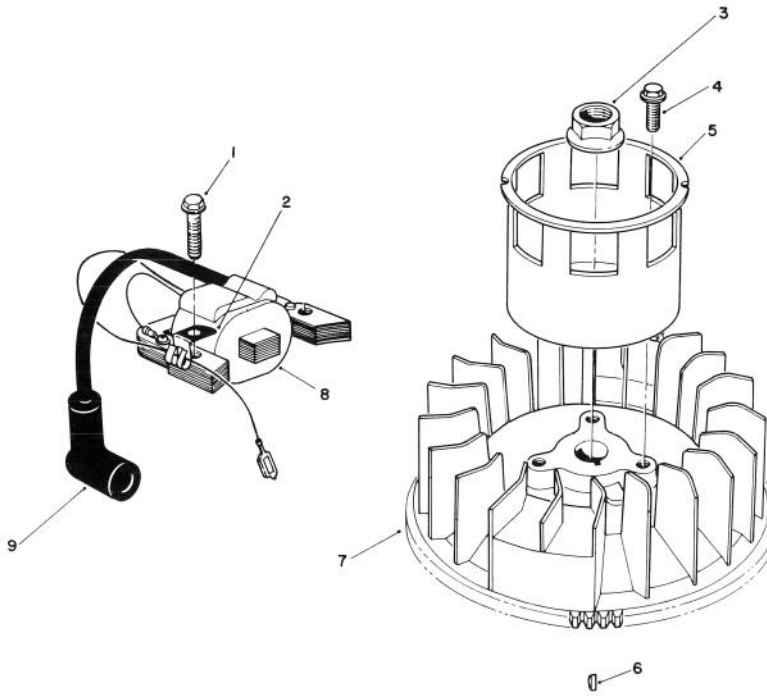
C-0157

CRANKCASE ASSEMBLY (Continued) (Engine Model No. VMK9-2)

Ref. No.	Part No.	Description	No. Used
40	81-4970	Plug - Oil Drain	1
41	81-3510	Gasket - Oil Plug	1
42	81-3520	Crankcase - Lower	1
43	81-3530	Gasket - Crankcase	1
44	50-0450	Pin - Dowel	2
45	81-3550	Governor Flyweight Assy.	1
46	81-3610	Stud - Connecting Rod	2
47	81-3560	Plunger - Governor	1
48	81-3570	Washer	1

Ref. No.	Part No.	Description	No. Used
49	81-3580	Spring - Comp. Release	1
50	81-5550	Camshaft Assembly (Incl. Ref. #49)	1
51	81-3600	Tappet	2
52	81-3830	Guide - Valve	2
53	50-0190	Bolt	4
54	81-3810	Rod - Push	2
55	81-3800	Stud - Rocker Arm	2
*	13-5939	Short Block Assembly	1

*Not Illustrated

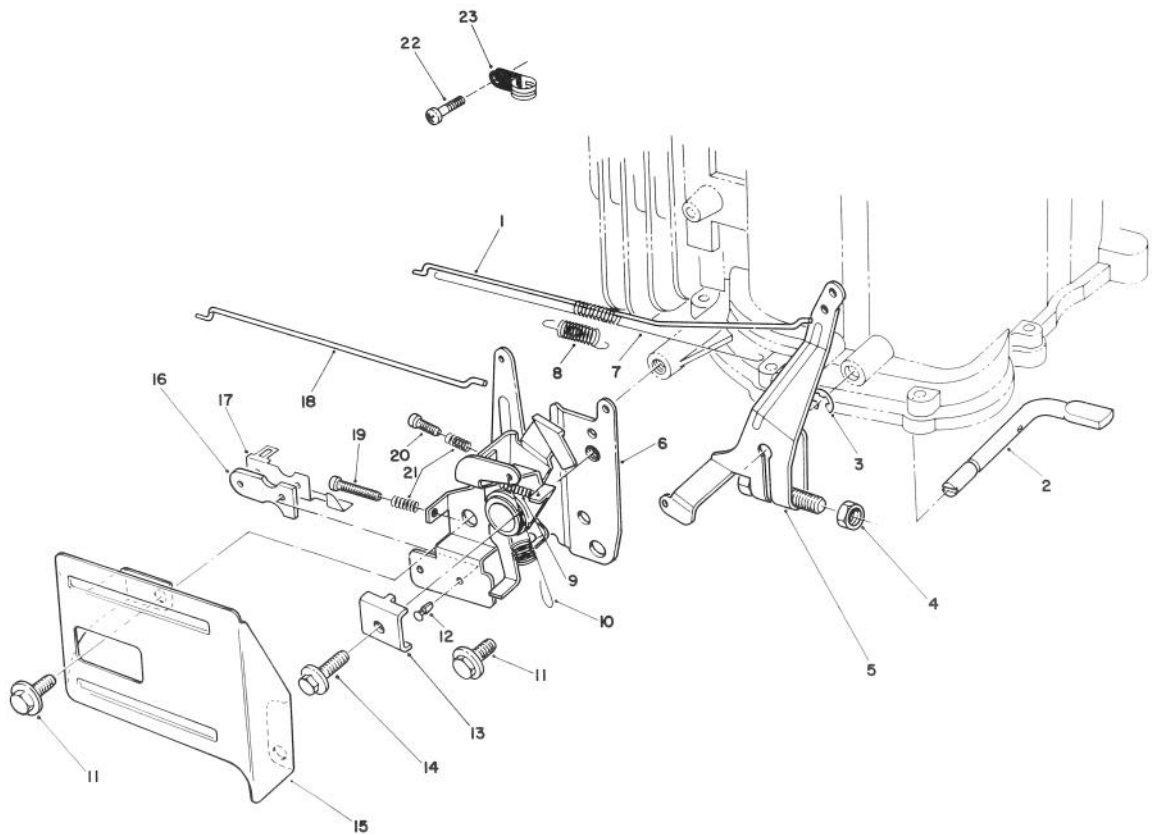


T-0723

MAGNETO & FLYWHEEL ASSEMBLY (Engine Model No. VMK9-2)

Ref. No.	Part No.	Description	No. Used
1	53-0860	Bolt	2
2	81-1480	Clamp	1
3	81-3890	Nut	1
4	81-1300	Bolt	3
5	81-3910	Cup - Starter	1

Ref. No.	Part No.	Description	No. Used
6	81-3930	Key - Flywheel	1
7	81-3920	Flywheel	1
8	81-5580	Magneto Coil Assembly	1
9	81-3860	Cover - Spark Plug	1

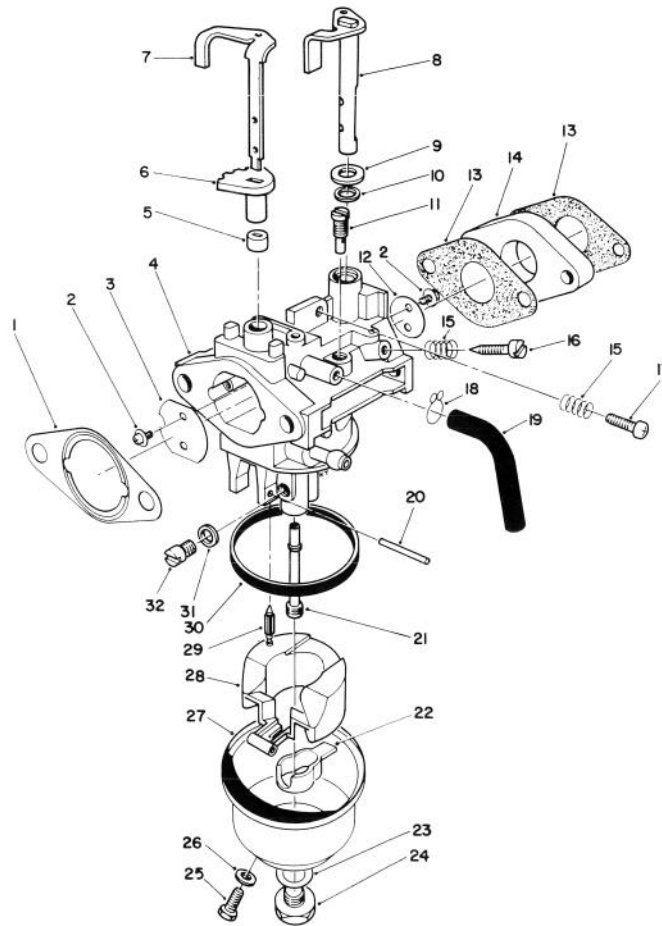


C-0159

GOVERNOR ASSEMBLY (Engine Model No. VMK9-2)

Ref. No.	Part No.	Description	No. Used
1	81-4450	Rod - Carburetor	1
2	81-4480	Shaft - Governor	1
3	81-4540	E-Ring	1
4	81-3760	Nut	1
5	81-4500	Governor Arm Assembly	1
6	81-4510	Throttle & Choke Control	1
7	81-4470	Spring - Carburetor Rod	1
8	81-4460	Spring - Choke Lever	1
9	81-4570	Spring	1
10	81-4520	Spring - Governor	1
11	81-1170	Bolt	2
12	81-4530	Rivet	2

Ref. No.	Part No.	Description	No. Used
13	81-1690	Clamp - Cable	1
14	50-0130	Bolt	1
15	57-5750	Guard - Throttle	1
16	81-1830	Insulator - Kill Switch	1
17	81-1840	Terminal - Switch	1
18	81-4440	Rod - Choke	1
19	81-4560	Screw	1
20	81-4550	Screw	1
21	81-2900	Spring	2
22	81-0380	Screw	1
23	81-4780	Clamp	1



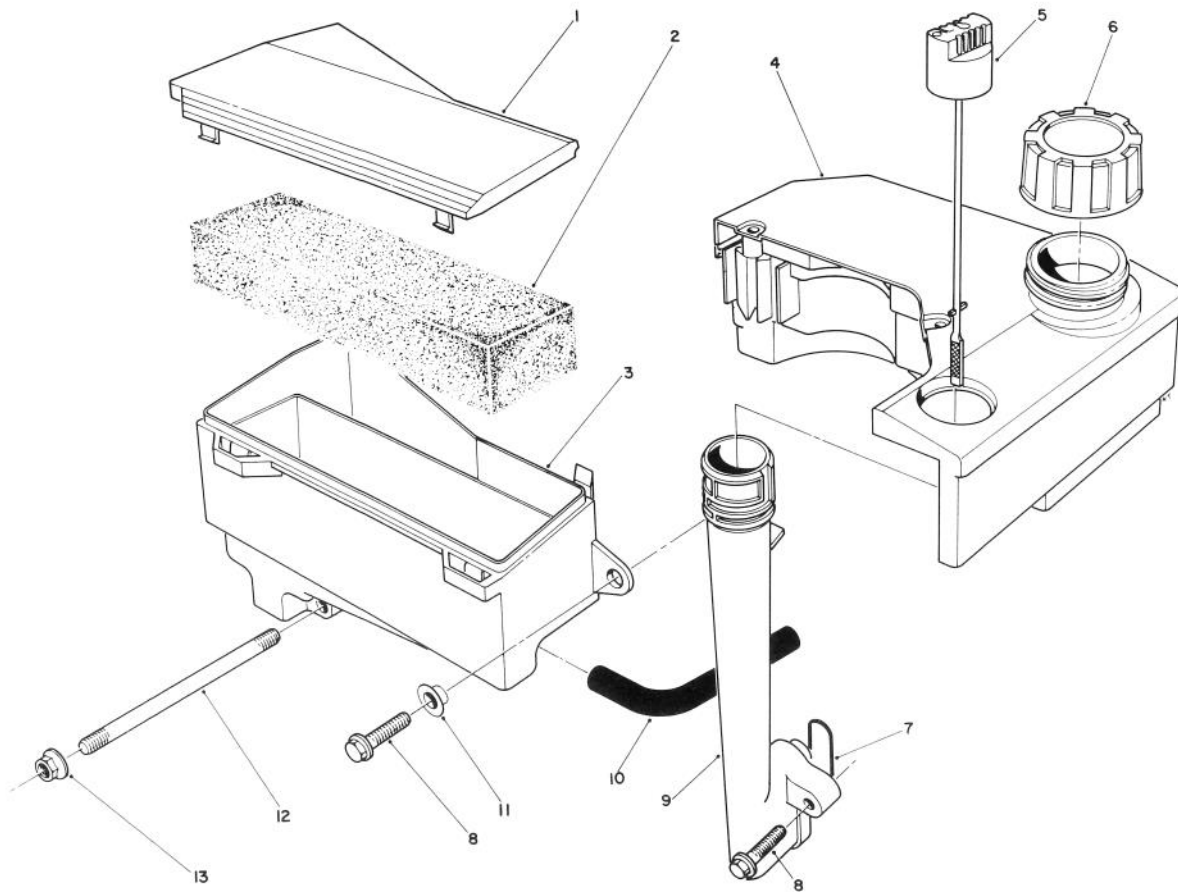
C-0160

CARBURETOR ASSEMBLY (Engine Model No. VMK9-2)

Ref. No.	Part No.	Description	No. Used
1	81-4250	Gasket - Air Cleaner	1
2	81-2710	Screw - Choke Valve	4
3	81-2720	Valve - Choke	1
4		Body - Carburetor	1
5	81-5530	Ring - Choke (Lower)	1
6	81-5520	Ring - Choke (Upper)	1
7	81-5500	Shaft - Choke Control	1
8	81-2920	Shaft - Throttle Valve	1
9	81-4280	Washer	1
10	81-4290	Seal - Throttle Shaft	1
11	81-5620	Jet - Pilot (#38.8)	1
12	81-2940	Valve - Throttle	1
13	81-5560	Gasket - Carburetor	2
14	81-5570	Block - Insulator	1
15	81-2580	Spring - Pilot Screw	2
16	50-2360	Screw - Pilot	1
17	50-0250	Screw - Idle Stop	1
18	81-4300	Clamp	1
19	81-4310	Tube - Bowl Vent	1
20	81-5600	Pin - Hinge	1

Ref. No.	Part No.	Description	No. Used
21	81-5630	Nozzle - Main	1
22	81-4940	Spacer - Float	1
23	81-2650	Gasket - Bowl Screw	1
24	81-2660	Screw - Bowl	1
25	81-2670	Screw - Drain	1
26	81-2680	Gasket - Drain Screw	1
27	81-4340	Bowl - Float	1
28	81-4920	Float	1
29	81-4700	Needle	1
30	81-2630	Gasket - Float Bowl	1
31	81-4350	Spacer	1
32	81-2340	Jet - Main (#72.5)	1
*	81-5610	Jet - Main (#70 High Alt.)	1
*	81-4270	Choke Shaft Assembly (Incl. Ref. #5-7)	1
*	81-5650	Carburetor Repair Kit (Incl. Ref. #1, 13, 23, 26, 29 & 30)	1
*	81-5590	Carburetor Assembly (Incl. Ref. #2-32)	1

*Not Illustrated



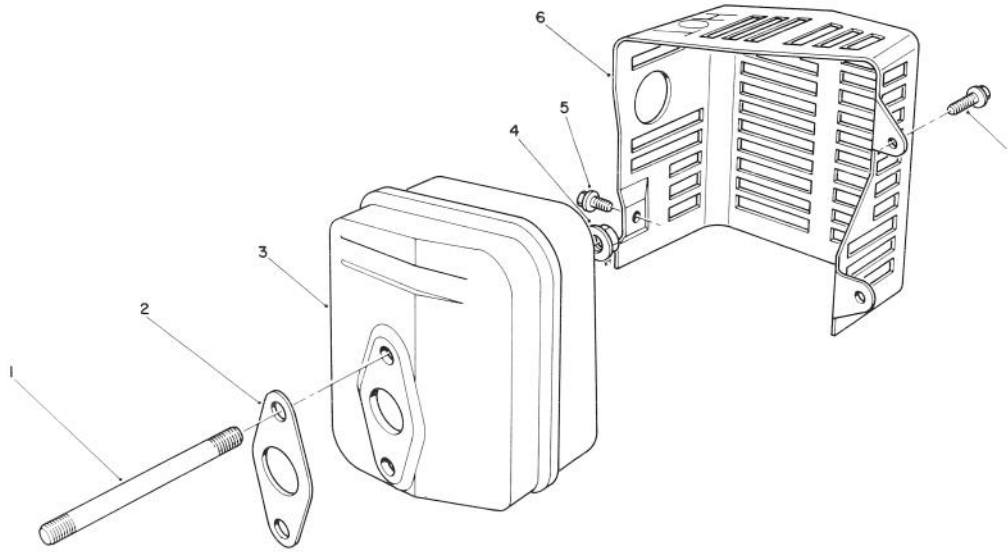
C-0161

AIR CLEANER & FUEL TANK ASSEMBLY (Engine Model No. VMK9-2)

Ref. No.	Part No.	Description	No. Used
1	81-4110	Cover - Air Cleaner	1
2	81-4120	Filter - Foam	1
3		Body - Air Cleaner	1
4	55-3530	Tank - Fuel	1
5	81-4140	Dipstick - Oil	1
6	55-3570	Cap - Gas	1
7	81-4150	Seal - Oil Tube	1
8	81-4160	Bolt	3

Ref. No.	Part No.	Description	No. Used
9	81-4170	Tube - Oil Fill	1
10	81-4180	Hose - Crankcase Breather	1
11	81-4200	Spacer	1
12	81-4220	Stud - Carburetor	2
13	50-7180	Nut	2
*	81-4240	Air Cleaner Assembly (Incl. Ref. #1 & 3)	1

*Not Illustrated



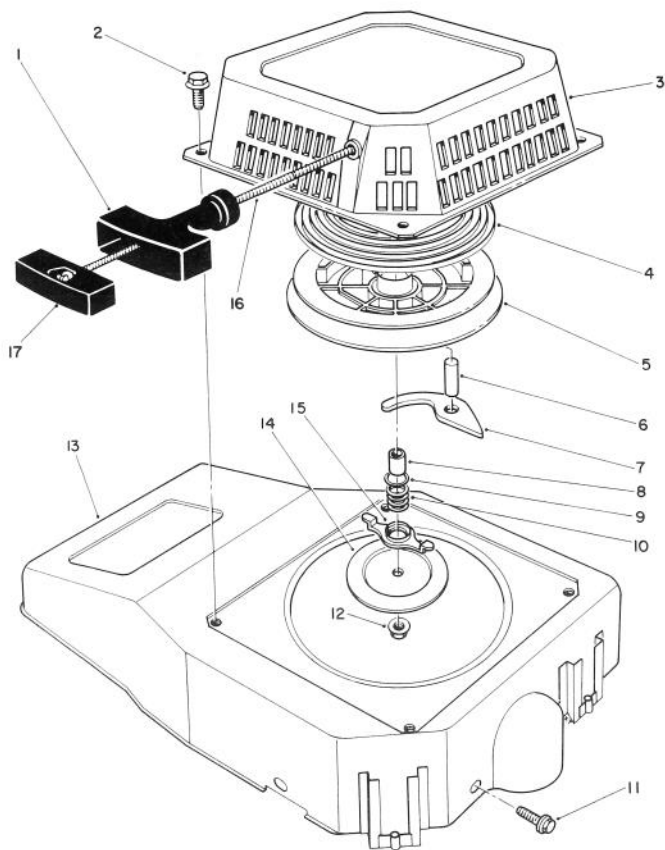
T-0726

MUFFLER ASSEMBLY (Engine Model No. VMK9-2)

Ref. No.	Part No.	Description	No. Used
1	81-4380	Stud - Muffler	2
2	81-4390	Gasket - Muffler	1
3	81-4400	Muffler	1
4	50-0530	Nut	2
5	81-4420	Screw	1

Ref. No.	Part No.	Description	No. Used
6	81-4430	Cover - Muffler	1
7	81-1170	Bolt	2
*	56-6730	Spark Arrester Kit (Incl. Ref. #2) Optional	1

*Not Illustrated



C-0162

RECOIL ASSEMBLY (Engine Model No. VMK9-2)

Ref. No.	Part No.	Description	No. Used
1	81-4000	Handle	1
2	81-1280	Bolt	4
3	81-3970	Case - Recoil	1
4	81-4010	Spring - Recoil	1
5	81-4020	Reel - Rope Pulley	1
6	81-4030	Pin	1
7	81-4040	Pawl	1
8	81-4050	Spacer	1
9	81-4060	Washer	1
10	81-4070	Spring - Friction	1

Ref. No.	Part No.	Description	No. Used
11	81-1170	Bolt	3
12	81-4100	Nut - Lock	1
13	81-3960	Shroud - Blower	1
14	81-4090	Plate - Friction	1
15	81-4080	Guide - Pawl	1
16	81-1270	Rope - Recoil	1
17	81-4960	Retainer - Rope	1
*	81-3270	Recoil Starter Assembly (Incl. Ref. #1, 3-10, 12 & 14-17)	1

*Not Illustrated

