



Roller Striping Kit

For Z Master® TURBO FORCE® Mowers
Model No. 108-2162

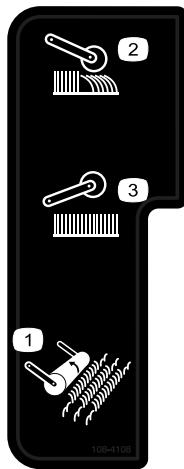
Installation Instructions

Safety

Safety and Instructional Decals



Safety decals and instructions are easily visible to the operator and are located near any area of potential danger. Replace any decal that is damaged or lost.



108-4108

1. Striping roller
2. Engage the striping roller.
3. Raise the striping roller.

Installation

Loose Parts

Use the chart below to verify that all parts have been shipped.

Step	Description	Qty.	Use
1	Flange bushing	2	Install the roller.
	Roller assembly	1	
	Bolt (3/8 x 4-3/4 inches)	2	
	Washer	2	
	Spacer	2	
	Right-hand spring	1	
	Left-hand spring	1	
	Locknut (3/8 inch)	2	
2	Control lever assembly	1	Install the control lever assembly.
	Bolt (7/16 x 2 inches)	1	
	Flange nut (7/16 inch)	2	
	Locknut (3/8 inch)	2	

Note: Determine the left and right sides of the machine from the normal operating position.

Step 1

Installing the Roller

Parts needed for this step:

2	Flange bushing
1	Roller assembly
2	Bolt (3/8 x 4-3/4 inches)
2	Washer
2	Spacer
1	Right-hand spring
1	Left-hand spring
2	Locknut (3/8 inch)

Procedure

1. Insert a flange bushing into the front hole of each bracket on the back of the mower (Figure 1).

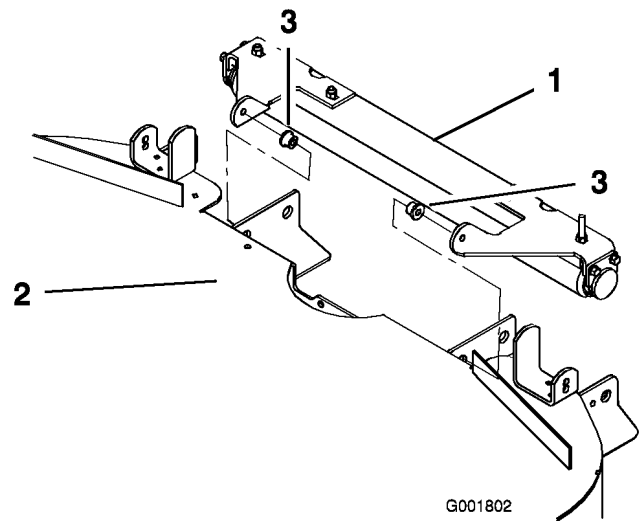


Figure 1

1. Roller assembly
2. Rear of the mower deck (viewed from the front)
3. Flange bushing

2. Thread a washer, spacer, and spring (with the long end toward the bolt head) onto each bolt (3/8 x 4-3/4 inches) (Figure 2)

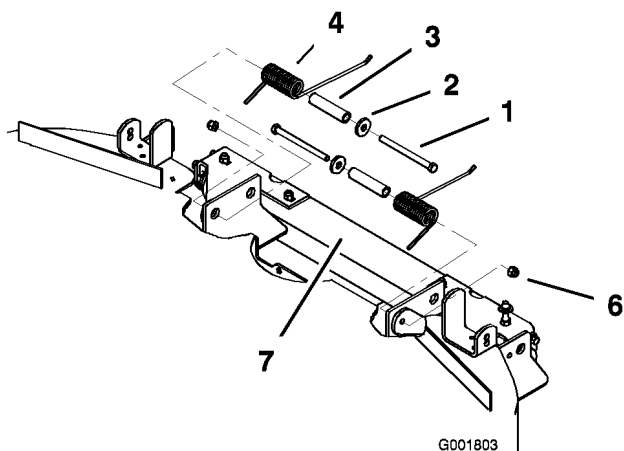


Figure 2

- | | |
|------------------------------|-----------------------|
| 1. Bolt (3/8 x 4-3/4 inches) | 5. Left-hand spring |
| 2. Washer | 6. Locknut (3/8 inch) |
| 3. Spacer | 7. Roller assembly |
| 4. Right-hand spring | |

- Place the roller assembly around the brackets and flange bushings at the rear of the mower deck (Figure 1)

Important: The flange of each flange bushing should be between the mower bracket and the roller assembly bracket with the body of the bushings extending through the mower brackets.

- Secure the roller assembly with the bolt assemblies and 2 nuts (3/8 inch) as illustrated in Figure 2.

Important: Ensure that you install the springs as shown in Figure 2. The springs are opposites of each other, one meant for the right side and one for the left. Ensure that the long end of each spring is on the top of the roller assembly and the short end is angled up against the deck.

Step **2**

Installing the Control Lever Assembly

Parts needed for this step:

1	Control lever assembly
1	Bolt (7/16 x 2 inches)
2	Flange nut (7/16 inch)
2	Locknut (3/8 inch)

Procedure

- Remove the bolt and nuts securing the left rear mower deck mounting chain to the mower deck.
- Install the control lever assembly onto the bracket you removed the chain from, securing it and the deck mounting chain with a bolt (7/16 x 2 inches) and 2 flange nuts (7/16 inch) (Figure 3).

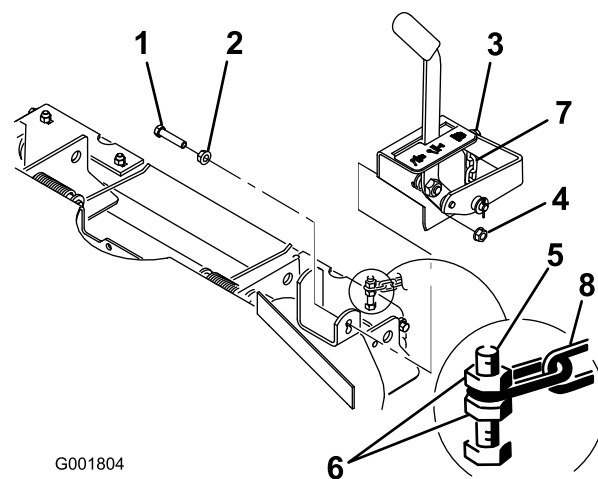


Figure 3

- | | |
|---------------------------|--|
| 1. Bolt (7/16 x 2 inches) | 5. Connect the control lever assembly chain here |
| 2. Flange nut (7/16 inch) | 6. Locknut (3/8 inch) |
| 3. Control lever assembly | 7. Chain |
| 4. Flange nut (7/16 inch) | 8. Last link of the chain installed between the locknuts |

- Thread a locknut (3/8 inch) onto the bolt on the left of the roller assembly (Figure 3).
- Connect the last link of the chain on the control lever assembly to the bolt on the left of the roller assembly using a locknut (3/8 inch),

securing the chain between the locknuts near the top of the bolt (Figure 3).

5. Test the lever action by moving it back and forth.

The roller should lift up and down.