



Rear Roller Kit ProCore® 648 Aerator

Model No. 09234

Parts Catalog

Ordering Replacement Parts

To order replacement parts, please supply the part number, the quantity, and the description of each part desired.

Understanding Reference Numbers

Each Identified part in an illustration has a reference number. The reference number for a part also appears in the parts list, along with other information about the part.

This catalog uses two special reference number formats, one to indicate parts in a service assembly and another to indicate the quantity of a given part in an illustration.

Service Assembly Reference Numbers

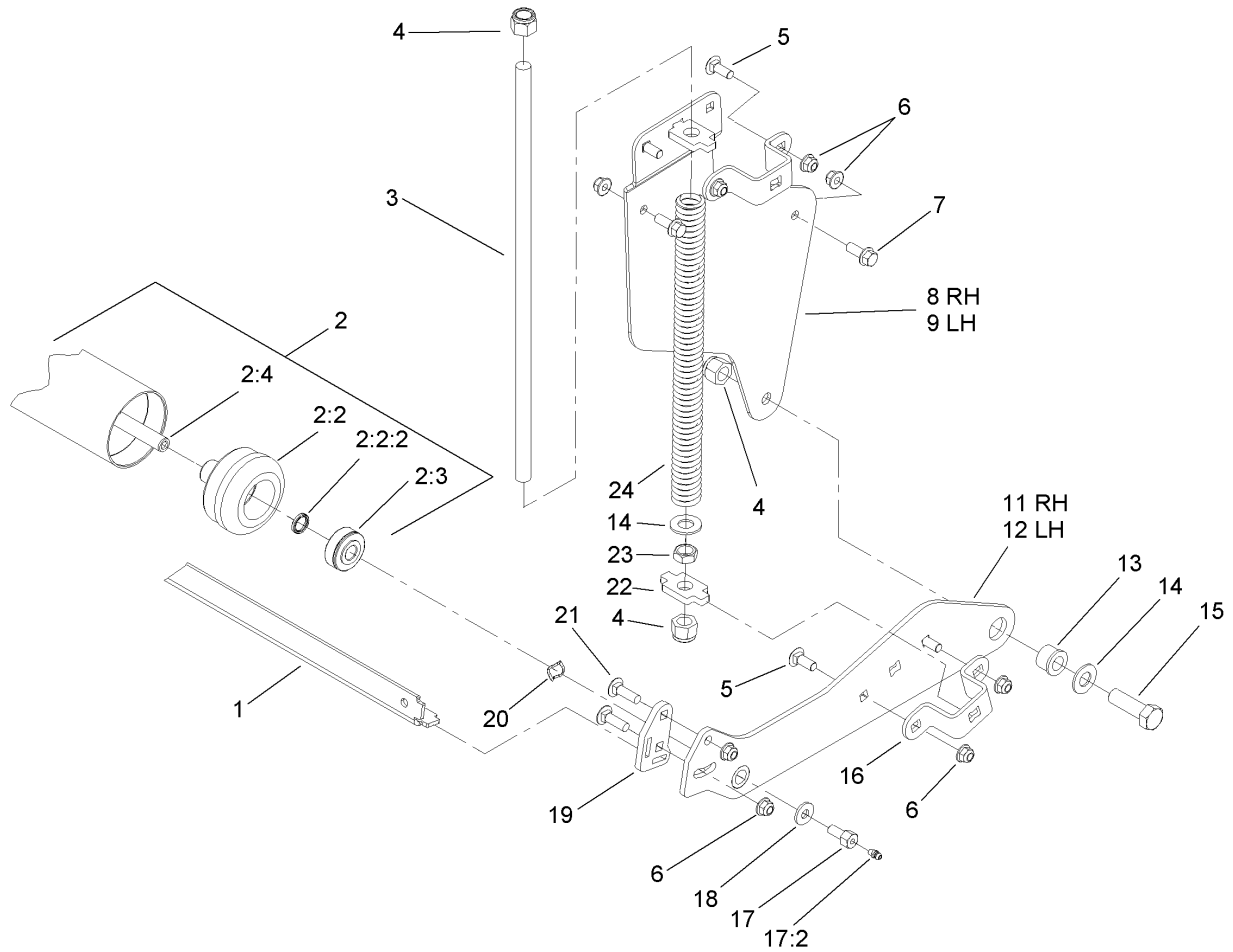
Parts in service assemblies have reference numbers in the form a:b. The a represents the reference number of the entire service assembly and the b represents a sequential number unique to each part within the service assembly.

For example, a wheel assembly might be identified by reference number 6, the tire by 6:1, the valve by 6:2, and the wheel by 6:3. When you order the assembly identified by reference number 6, you receive all parts identified by reference numbers 6:1, 6:2, and 6:3. However, you may also order any part individually. Reference numbers of this type appear in illustrations and in part lists.

Reference Numbers Indicating Quantity

In an illustration, if a reference number indicates more than one part, the reference number has the form nX y. The n represents the quantity of the part, the X is the multiplication symbol, and the y represents the reference number.

For example, in an illustration, the reference number 2X 37 means that two of the parts identified by reference number 37 are indicated.



Rear Roller Kit

Ref	Part No.	Qty.	Description
1	110-4409-01	1	Scraper-Roller
2	110-4444	1	Roller ASM
2:2		2	Hub Yoke ASM (Not Serviced Separately)
2:2:2	253-83	1	Seal-Oil
2:3	251-141	2	Bearing-Ball
2:4	110-4371	1	Shaft-Roller
3	110-4410	2	Rod-Threaded
4	3296-53	6	Nut-Lock, NI
5	3231-2	8	Screw-CARR
6	104-8301	16	Nut-Flange, NI
7	3234-11	4	Screw-HHF
8	110-4407-03	1	Plate-Side, RH
9	110-4408-03	1	Plate-Side, LH
11	110-4373-03	1	Arm-Roller, RH
12	110-4374-03	1	Arm-Roller, LH
13	72-0430	2	Bushing-Flange
14	3256-27	4	Washer-Flat
15	327-6	2	Screw-HH
16	110-4412	4	Bracket-Spring
17	11-0160	2	Roller Shaft Screw ASM
17:2	302-5	1	Fitting-Grease
18	80-6990	1	Washer-Hardened
19	110-4290	2	Arm-Scraper

Ref	Part No.	Qty.	Description
20	3290-317	2	Washer-Spring
21	3231-25	4	Screw-CARR
22	110-4411	4	Trunnion-Spring
23	3218-6	2	Nut-Jam
24	110-4414	2	Spring-Compression