



Shifter Update Kit

2000 to 2004 Multi-Pro® 1200 and 1250 Turf Sprayer

Model No. 110-5191

Parts Catalog

Ordering Replacement Parts

To order replacement parts, please supply the part number, the quantity, and the description of each part desired.

Understanding Reference Numbers

Each Identified part in an illustration has a reference number. The reference number for a part also appears in the parts list, along with other information about the part.

This catalog uses two special reference number formats, one to indicate parts in a service assembly and another to indicate the quantity of a given part in an illustration.

Service Assembly Reference Numbers

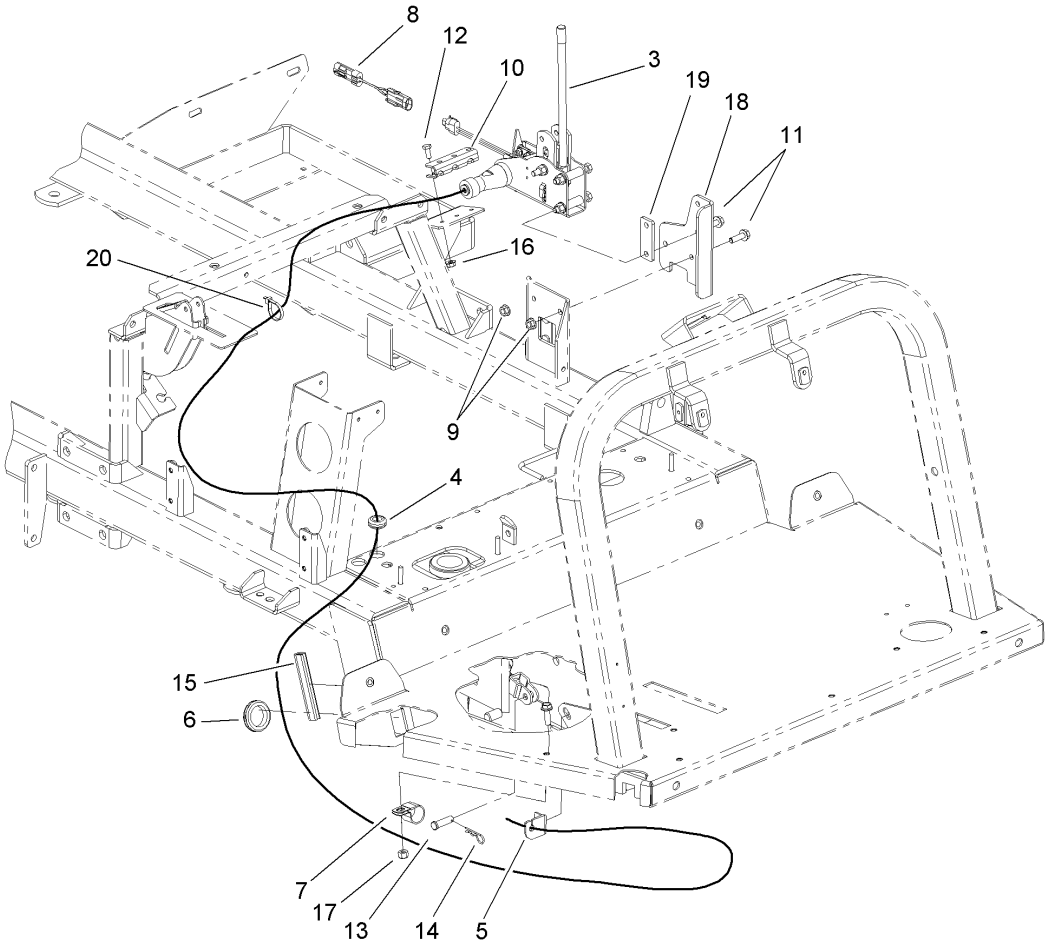
Parts in service assemblies have reference numbers in the form a:b. The a represents the reference number of the entire service assembly and the b represents a sequential number unique to each part within the service assembly.

For example, a wheel assembly might be identified by reference number 6, the tire by 6:1, the valve by 6:2, and the wheel by 6:3. When you order the assembly identified by reference number 6, you receive all parts identified by reference numbers 6:1, 6:2, and 6:3. However, you may also order any part individually. Reference numbers of this type appear in illustrations and in part lists.

Reference Numbers Indicating Quantity

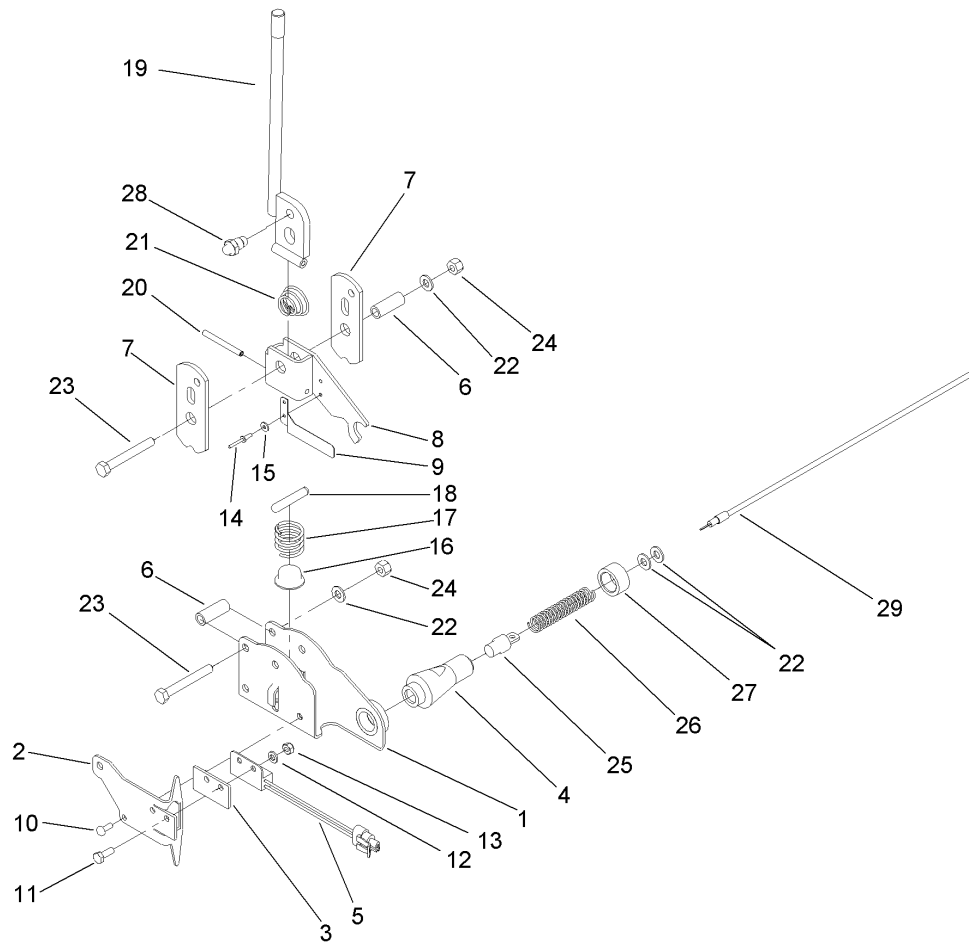
In an illustration, if a reference number indicates more than one part, the reference number has the form nX y. The n represents the quantity of the part, the X is the multiplication symbol, and the y represents the reference number.

For example, in an illustration, the reference number 2X 37 means that two of the parts identified by reference number 37 are indicated.



Shifter Update Kit No. 110-5191

Ref	Part No.	Qty.	Description				
3	110-5190	1	Shifter ASM				
4	1-543296	1	Grommet				
5	108-3556	1	Bracket-Cable				
6	240-3	1	Grommet-Rubber				
7	98-2390	2	Clamp-R				
8	108-9480	1	Harness-Wire, Switch Adapter				
9	32128-20	2	Nut-HF				
10	110-5192-03	1	Bracket-Extension				
11	3234-17	2	Screw-HHF				
12	321-3	3	Screw-HH				
13	283-42	1	Pin-Clevis				
14	3290-250	1	Pin-Hair				
15	108-3653	1	Trim-Edge				
16	32128-33	3	Nut-HF				
17	3296-29	1	Nut-Lock, NI				
18	108-3584-03	1	Bracket				
19	108-3585	1	Shim				
20	3290-379	2	Tie-Cable				



Shifter Assembly No. 110-5190

Ref	Part No.	Qty.	Description	Ref	Part No.	Qty.	Description
1	110-5106	1	Clevis	25	108-3558	1	Pin-Retracting
2	110-5101	1	Bracket-Mount, Switch	26	108-3557	1	Spring
3	110-5102	1	Spacer-Insulator	27	108-3564	1	Cap-Spring
4	110-5103	1	Tube-Shifter	28	108-3325	1	Pin-Shifter
5	105-0023	1	Switch-Proximity	29	108-3553	1	Shift Lock Cable ASM
6	108-3570	3	Tube-Shifter				
7	87-3540	2	Link-Shift				
8	108-3565	1	Bracket-Shifter				
9	108-3571	1	Flag-Sensor, Proximity				
10	3250-12	1	Screw-PPH				
11	33113-016	2	Screw-HH				
12	33093-00	2	Washer-Flat				
13	33023-00	2	Nut-Lock				
14	3290-55	2	Rivet-Pop				
15	5-1254	2	Washer				
16	87-3530	1	Button-Shifter				
17	87-3660	1	Spring-Compression				
18	3290-507	1	Pin-Dowel				
19	87-2040	1	Shift Lever ASM				
20	32121-48	1	Pin-Spring				
21	87-2900	1	Spring-Compression				
22	3256-74	5	Washer-Flat				
23	322-12	3	Screw-HH				
24	3296-29	3	Nut-Lock, NI				

