



## 42in Twin Bagger

Model No. 190-180-190 - 260000001 and up.

### Parts Catalog

---

#### **Ordering Replacement Parts**

To order replacement parts, please supply the part number, the quantity, and the description of each part desired.

#### **Understanding Reference Numbers**

Each identified part in an illustration has a reference number. The reference number for a part also appears in the parts list, along with other information about the part.

This catalog uses two special reference number formats, one to indicate parts in a service assembly and another to indicate the quantity of a given part in an illustration.

#### **Service Assembly Reference Numbers**

Parts in service assemblies have reference numbers in the form a:b. The a represents the reference number of the entire service assembly and the b represents a sequential number unique to each part within the service assembly.

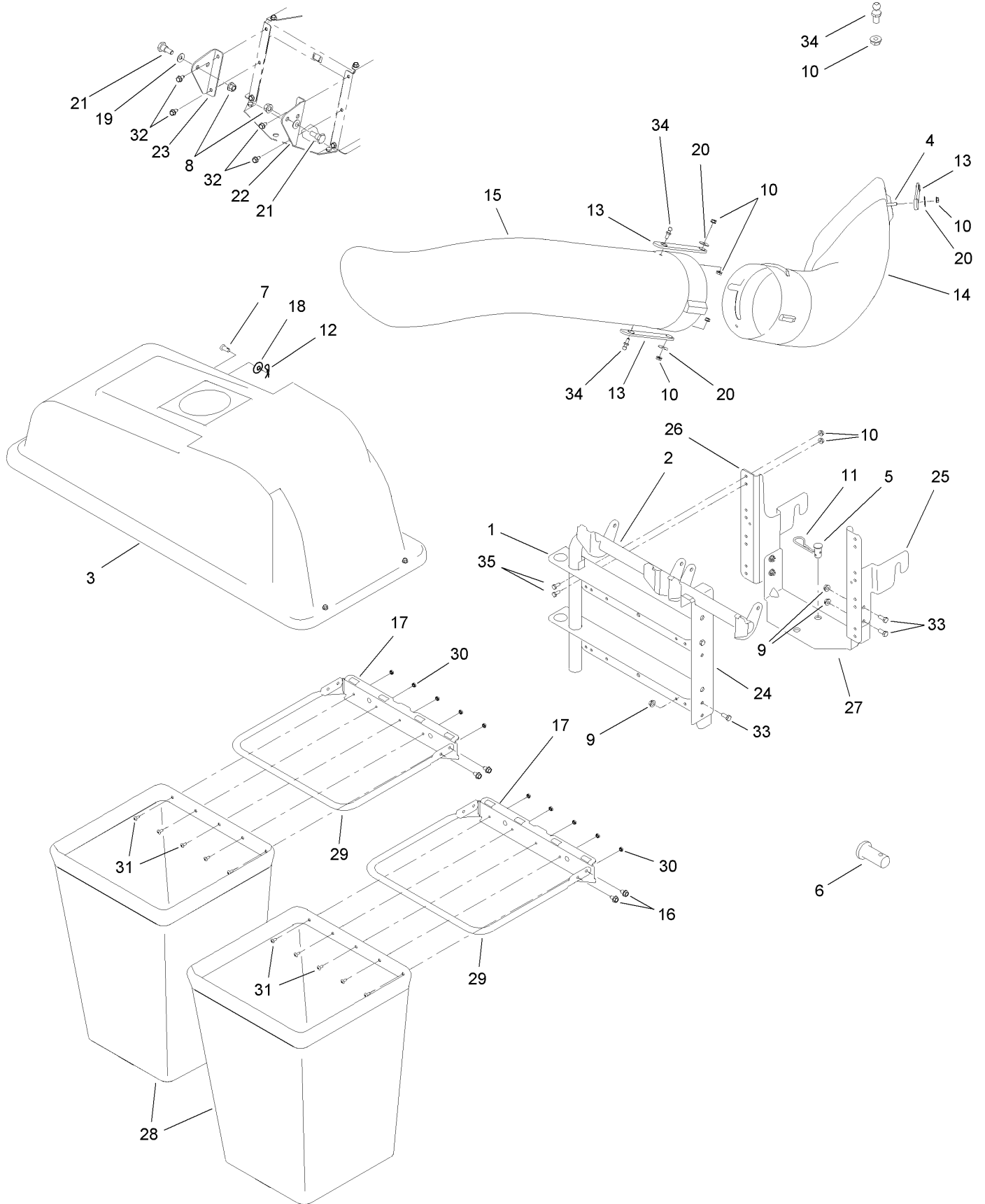
For example, a wheel assembly might be identified by reference number 6, the tire by 6:1, the valve by 6:2, and the wheel by 6:3. When you order the assembly identified by reference number 6, you receive all parts identified by reference numbers 6:1, 6:2, and 6:3. However, you may also order any part individually. Reference numbers of this type appear in illustrations and in part lists.

#### **Reference Numbers Indicating Quantity**

In an illustration, if a reference number indicates more than one part, the reference number has the form nX y. The n represents the quantity of the part, the X is the multiplication symbol, and the y represents the reference number.

For example, in an illustration, the reference number 2X 37 means that two of the parts identified by reference number 37 are indicated.

# 42 Inch Twin Bagger Assembly



## 42 Inch Twin Bagger Assembly

Ref	Part No.	Qty.	Description				
1	112-0939	1	Bracket-Mounting				
2	112-0941	1	Support Tube ASM				
3	112-1200	1	Cover ASM (Double)				
4	112-1078	3	Screw-HH				
5	112-1244	1	Pin-Clevis				
6	112-1097	1	Pin-Clevis				
7	112-1245	2	Pin-Clevis				
8	112-0859	2	Nut-Lock, Flange				
9	112-0511	6	Nut-Lock, Flange				
10	112-0657	14	Nut-Lock, Flange				
11	112-1246	1	Clip-Hairpin				
12	112-0398	2	Pin-Click				
13	112-0996	3	Strap-Chute				
14	112-1146	1	Chute-Discharge				
15	112-1003	1	Tube-Chute, Upper				
16	112-0556	8	Screw-HWH				
17	112-0940	2	Bracket-Bag, Hanger				
18	112-1166	2	Washer-Bell				
19	112-0481	2	Washer-Bell				
20	112-1173	3	Washer-Flat				
21	112-1021	2	Bolt-Shoulder				
22	112-1202	1	Bracket-Support, RH				
23	112-1203	1	Bracket-Support, LH				
24	112-1043	1	Bracket-Support				
25	112-1044	1	Bracket-Catcher, RH				
26	112-1045	1	Bracket-Catcher, LH				
27	112-1046	1	Bracket-Cross, Support				
28	112-1198	2	Bag-Grass				
29	112-1034	2	Frame-Catcher, Bag				
30	112-1105	10	Nut-Sems				
31	112-1076	10	Screw-Truss, Machine				
32	112-0472	4	Screw-HH, TAP				
33	112-1090	6	Screw-HH				
34	112-0484	3	Pin-Catcher, Grass				
35	112-1083	8	Screw-HH				

