



46in Twin Bagger

Model No. 190-182-190 - 260000001 and up.

Parts Catalog

Ordering Replacement Parts

To order replacement parts, please supply the part number, the quantity, and the description of each part desired.

Understanding Reference Numbers

Each Identified part in an illustration has a reference number. The reference number for a part also appears in the parts list, along with other information about the part.

This catalog uses two special reference number formats, one to indicate parts in a service assembly and another to indicate the quantity of a given part in an illustration.

Service Assembly Reference Numbers

Parts in service assemblies have reference numbers in the form a:b. The a represents the reference number of the entire service assembly and the b represents a sequential number unique to each part within the service assembly.

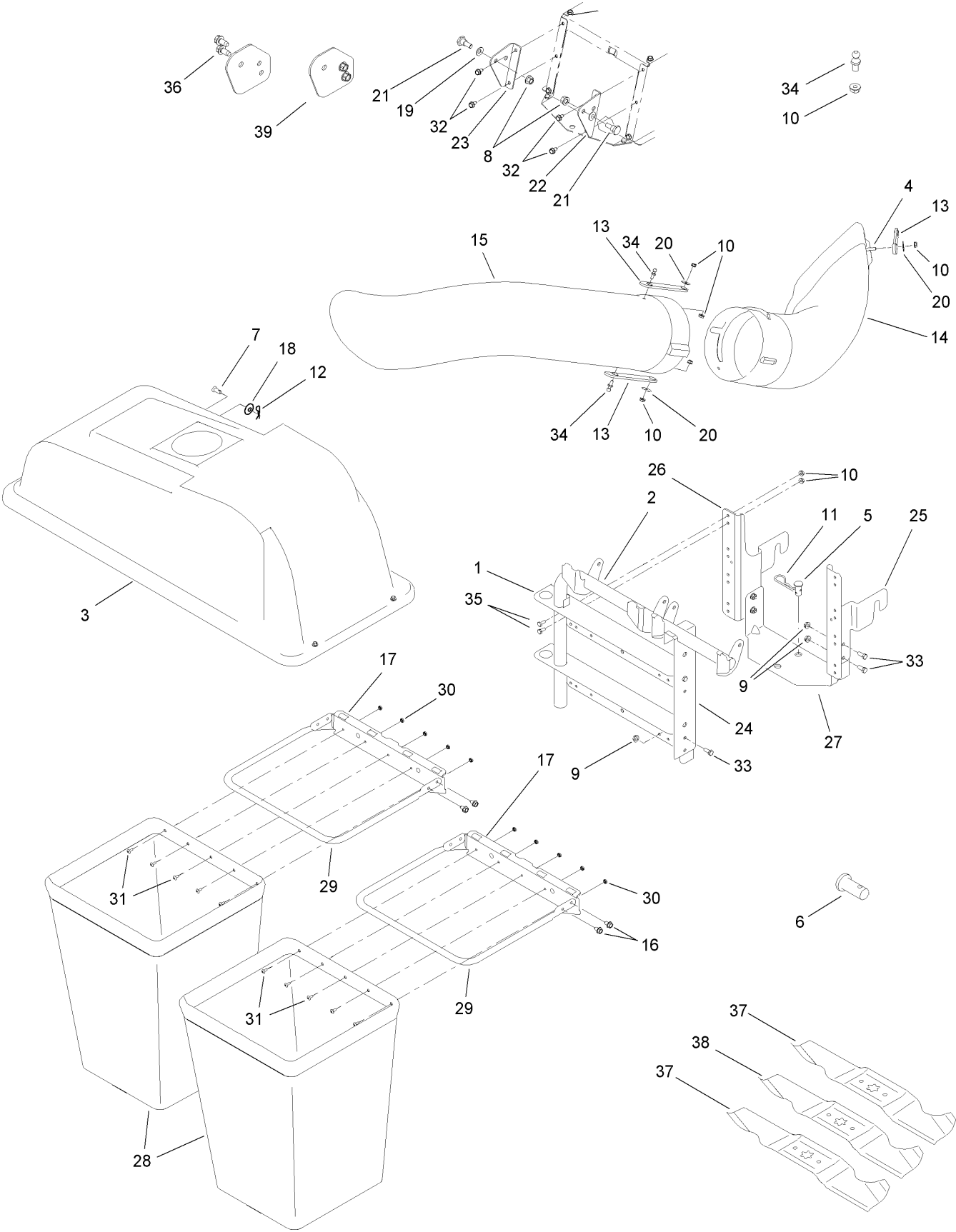
For example, a wheel assembly might be identified by reference number 6, the tire by 6:1, the valve by 6:2, and the wheel by 6:3. When you order the assembly identified by reference number 6, you receive all parts identified by reference numbers 6:1, 6:2, and 6:3. However, you may also order any part individually. Reference numbers of this type appear in illustrations and in part lists.

Reference Numbers Indicating Quantity

In an illustration, if a reference number indicates more than one part, the reference number has the form nX y. The n represents the quantity of the part, the X is the multiplication symbol, and the y represents the reference number.

For example, in an illustration, the reference number 2X 37 means that two of the parts identified by reference number 37 are indicated.

46 Inch Twin Bagger Assembly



46 Inch Twin Bagger Assembly

Ref	Part No.	Qty.	Description				
1	112-0939	2	Bracket-Mounting				
2	112-0941	1	Support Tube ASM				
3	112-1200	1	Cover ASM (Double)				
4	112-1078	3	Screw-HH				
5	112-1244	1	Pin-Clevis				
6	112-1097	1	Pin-Clevis				
7	112-1245	2	Pin-Clevis				
8	112-0859	2	Nut-Lock, Flange				
9	112-0511	6	Nut-Lock, Flange				
10	112-0657	14	Nut-Lock, Flange				
11	112-1246	1	Clip-Hairpin				
12	112-0398	2	Pin-Click				
13	112-0996	3	Strap-Chute				
14	112-1147	1	Chute-Discharge				
15	112-1005	1	Tube-Elbow, Catcher				
16	112-0556	8	Screw-HWH				
17	112-0940	2	Bracket-Bag, Hanger				
18	112-1166	2	Washer-Bell				
19	112-0481	2	Washer-Bell				
20	112-1173	3	Washer-Flat				
21	112-1021	2	Bolt-Shoulder				
22	112-1202	1	Bracket-Support, RH				
23	112-1203	1	Bracket-Support, LH				
24	112-1043	1	Bracket-Support				
25	112-1044	1	Bracket-Catcher, RH				
26	112-1045	1	Bracket-Catcher, LH				
27	112-1046	1	Bracket-Cross, Support				
28	112-1198	2	Bag-Grass				
29	112-1034	2	Frame-Catcher, Bag				
30	112-1105	10	Nut-Sems				
31	112-1076	10	Screw-Truss, Machine				
32	112-0472	4	Screw-HH, TAP				
33	112-1090	6	Screw-HH				
34	112-0484	3	Pin-Catcher, Grass				
35	112-1083	8	Screw-HH				
36	112-0906	4	Screw-HWHTF				
37	112-1184	2	Blade (2 In 1 Star, 16.28 Inch)				
38	112-1185	1	Blade (2 In 1 Star, 14.88 Inch)				
39	112-1204	2	Bracket-Support, Catcher				

