



46in Front Blade

Model No. 190-833-000 - 260000001 and up.

Parts Catalog

Ordering Replacement Parts

To order replacement parts, please supply the part number, the quantity, and the description of each part desired.

Understanding Reference Numbers

Each Identified part in an illustration has a reference number. The reference number for a part also appears in the parts list, along with other information about the part.

This catalog uses two special reference number formats, one to indicate parts in a service assembly and another to indicate the quantity of a given part in an illustration.

Service Assembly Reference Numbers

Parts in service assemblies have reference numbers in the form a:b. The a represents the reference number of the entire service assembly and the b represents a sequential number unique to each part within the service assembly.

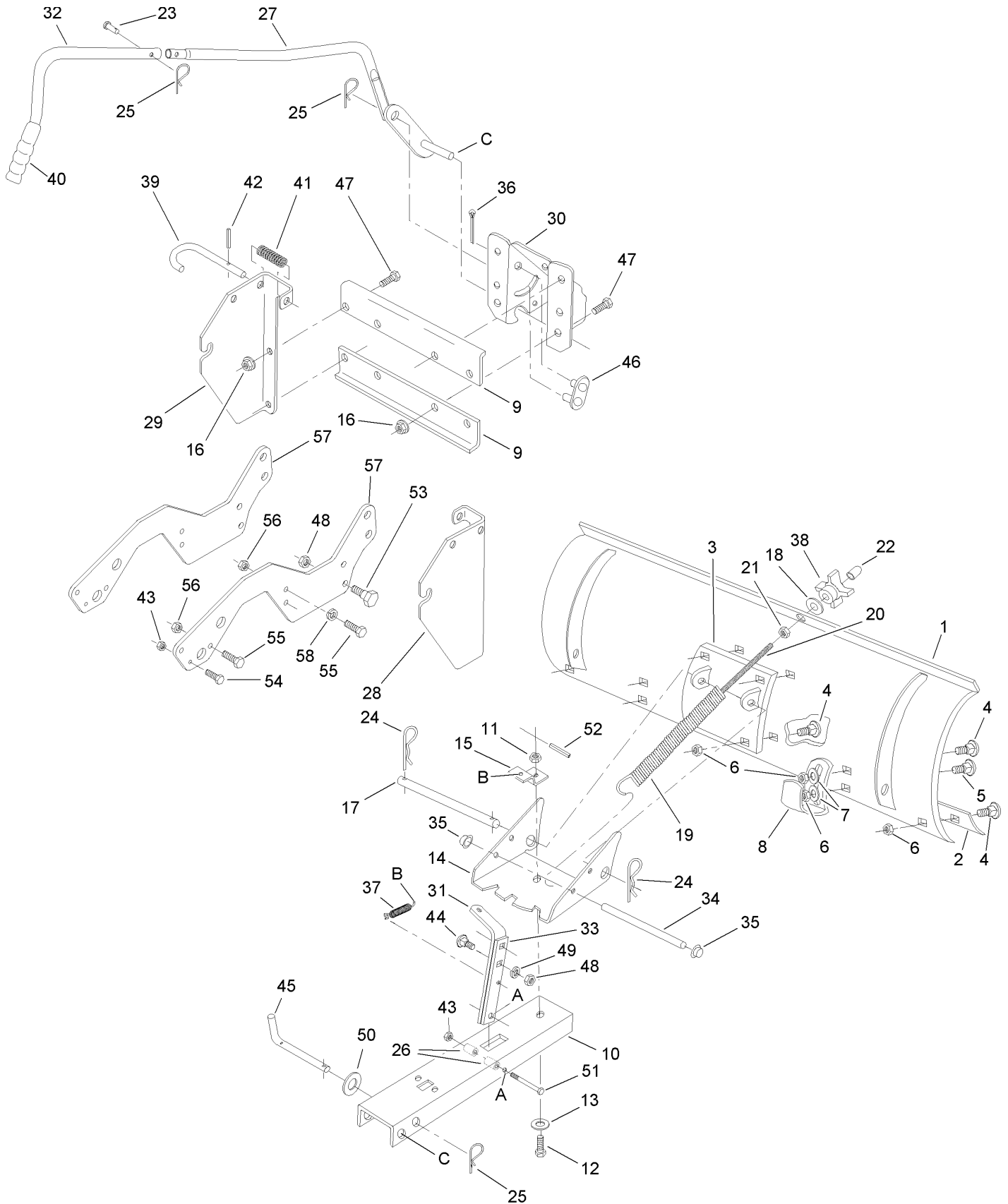
For example, a wheel assembly might be identified by reference number 6, the tire by 6:1, the valve by 6:2, and the wheel by 6:3. When you order the assembly identified by reference number 6, you receive all parts identified by reference numbers 6:1, 6:2, and 6:3. However, you may also order any part individually. Reference numbers of this type appear in illustrations and in part lists.

Reference Numbers Indicating Quantity

In an illustration, if a reference number indicates more than one part, the reference number has the form nX y. The n represents the quantity of the part, the X is the multiplication symbol, and the y represents the reference number.

For example, in an illustration, the reference number 2X 37 means that two of the parts identified by reference number 37 are indicated.

Front Blade Assembly



Front Blade Assembly

Ref	Part No.	Qty.	Description
1	112-1240	1	Blade
2	112-1218	1	Plate-Wear
3	112-1237	1	Reinforcement Plate ASM
4	112-1075	8	Bolt-CARR
5	112-1290	2	Bolt-CARR
6	112-1102	14	Nut-Lock
7	112-1224	4	Washer
8	112-1219	2	Skid-Shoe
9	112-1217	2	Bracket-Support, Angle
10	112-1214	1	Channel-Push
11	112-1109	1	Nut-Lock
12	112-1209	1	Bolt-Pivot, Special
13	112-1291	1	Washer-Flat
14	112-1212	1	Plate-Pivot
15	112-1208	1	Bracket-Mounting, Spring
16	112-1236	8	Nut-Lock, Flanged
17	112-1206	1	Shaft-Pivot
18	112-1223	1	Washer-Flat
19	112-1241	1	Spring-Adjust, Blade
20	112-0969	1	Screw-HH
21	112-1112	1	Nut-Hex
22	112-1229	1	Cap-Plastic
23	112-1220	1	Pin-Clevis, Lift Handle
24	112-1226	2	Pin-Hair
25	112-1233	3	Pin-Quick Attach
26	112-1230	2	Spacer
27	112-1239	1	Lower Lift Handle ASM
28	112-1215	1	Hitch-Bracket, RH
29	112-1216	1	Hitch-Bracket, LH
30	112-1213	1	Bracket-Support, Pivot
31	112-1207	1	Bar-Lock, Angle (Long)
32	112-1232	1	Handle-Lift, Upper
33	112-1210	1	Bar-Lock, Angle (Short)
34	112-1211	1	Rod-Mount, Spring
35	112-1141	2	Nut-Push
36	112-0412	1	Pin-Cotter
37	112-1227	1	Spring-Lock, Angle
38	112-1234	1	Knob
39	112-1235	2	Pin-Attachment
40	112-0994	1	Grip-Handle
41	112-1150	2	Spring-Compression
42	112-1228	2	Pin-Spring
43	112-1106	3	Nut-Lock, Flange
44	112-1292	2	Bolt-CARR
45	112-1231	1	Shaft-Channel, Pivot
46	112-1238	1	Link-Lift
47	112-1221	8	Screw-HH
48	112-1225	4	Nut-Lock
49	112-1222	2	Washer-Lock
50	112-1242	1	Washer
51	112-0976	1	Screw
52	112-0861	1	Pin-Spring

Ref	Part No.	Qty.	Description
53	112-1293	2	Bolt-Shoulder
54	112-1294	2	Screw-HH
55	112-1295	6	Screw-HH
56	112-1296	6	Nut-Nylock
57	112-1297	2	Bracket-Frame
58	112-1298	4	Washer-Lock

