



## Hydraulic Motor Kit Greensmaster® 3250-D

Model No. 112-0267

### Parts Catalog

#### Ordering Replacement Parts

To order replacement parts, please supply the part number, the quantity, and the description of each part desired.

#### Understanding Reference Numbers

Each Identified part in an illustration has a reference number. The reference number for a part also appears in the parts list, along with other information about the part.

This catalog uses two special reference number formats, one to indicate parts in a service assembly and another to indicate the quantity of a given part in an illustration.

#### Service Assembly Reference Numbers

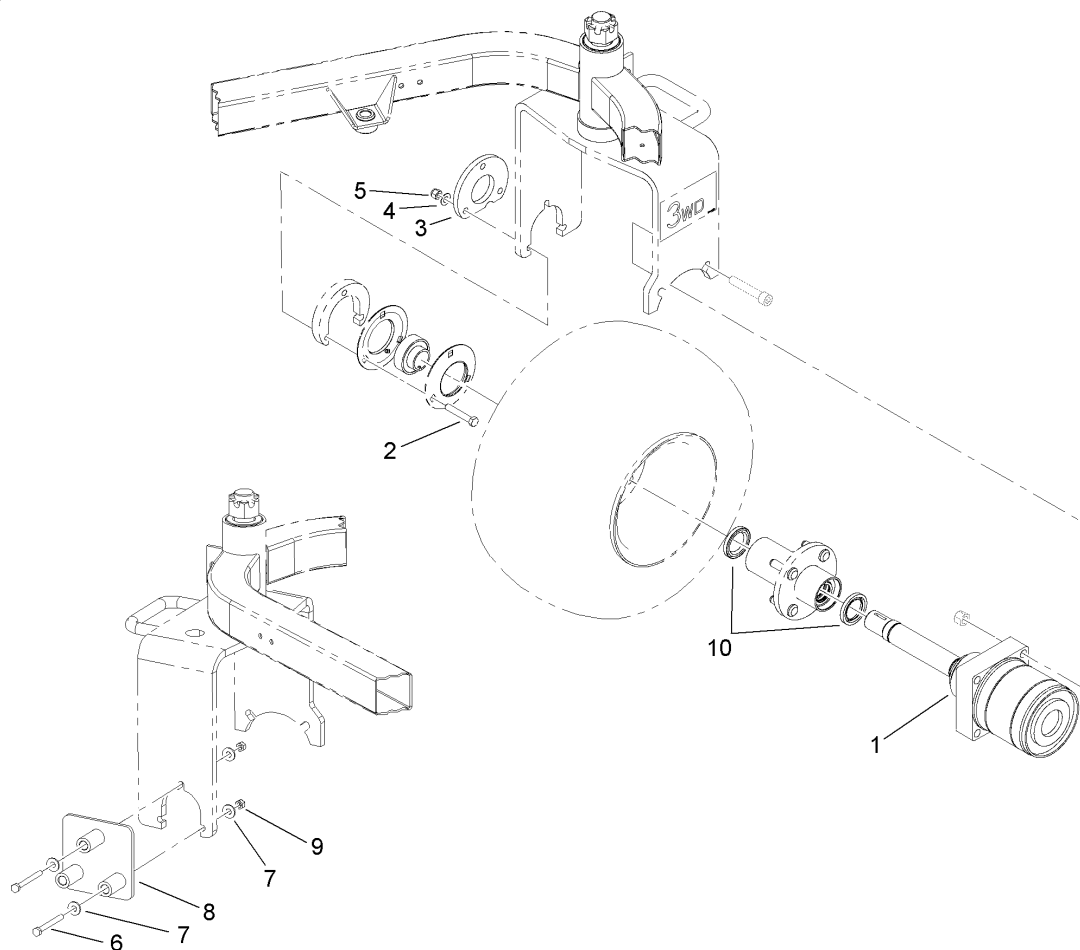
Parts in service assemblies have reference numbers in the form a:b. The a represents the reference number of the entire service assembly and the b represents a sequential number unique to each part within the service assembly.

For example, a wheel assembly might be identified by reference number 6, the tire by 6:1, the valve by 6:2, and the wheel by 6:3. When you order the assembly identified by reference number 6, you receive all parts identified by reference numbers 6:1, 6:2, and 6:3. However, you may also order any part individually. Reference numbers of this type appear in illustrations and in part lists.

#### Reference Numbers Indicating Quantity

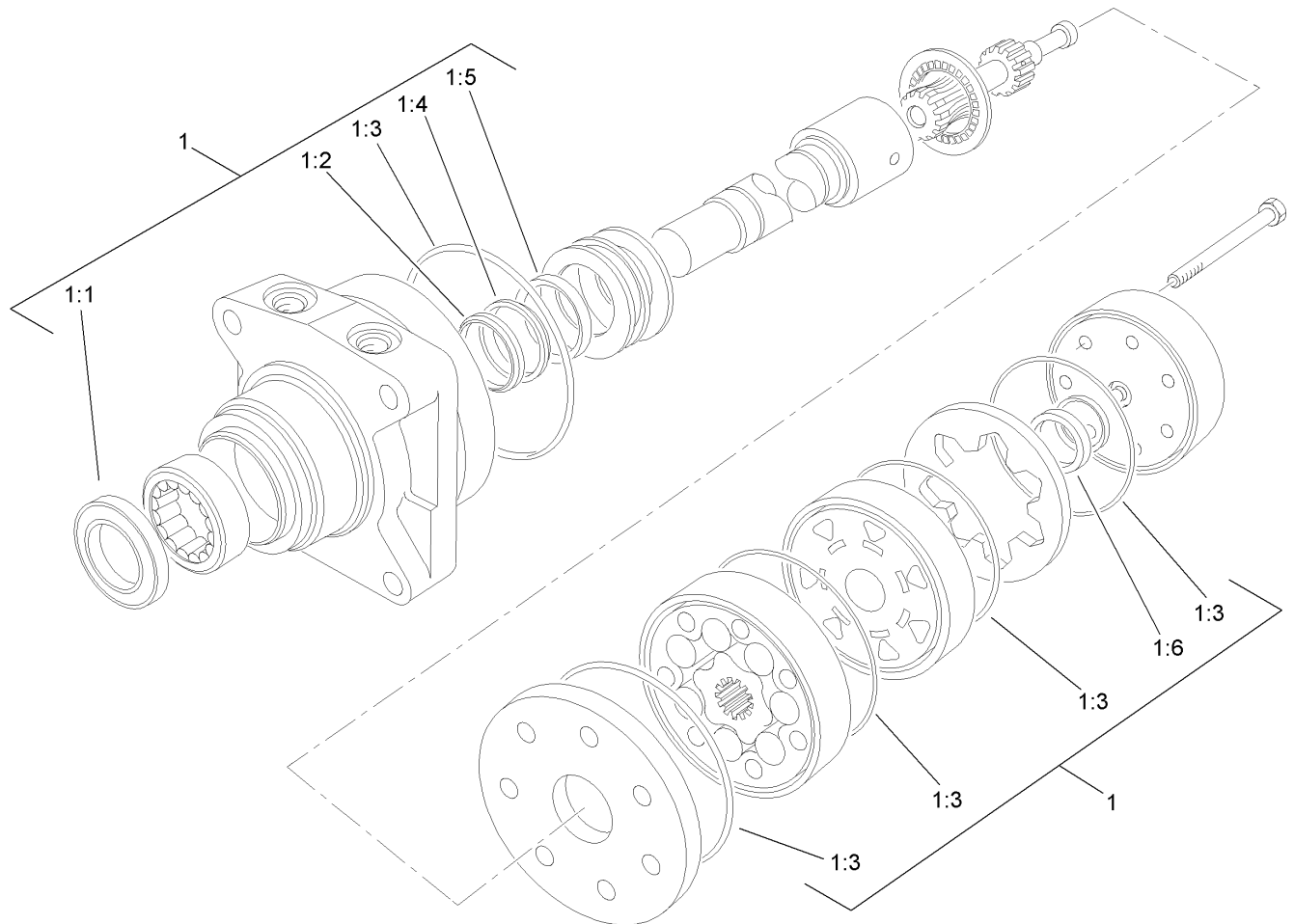
In an illustration, if a reference number indicates more than one part, the reference number has the form nX y. The n represents the quantity of the part, the X is the multiplication symbol, and the y represents the reference number.

For example, in an illustration, the reference number 2X 37 means that two of the parts identified by reference number 37 are indicated.



# Hydraulic Motor Assembly No. 112-0267

Ref	Part No.	Qty.	Description
1	112-0225	1	Motor-Hydraulic
2	323-45	3	Screw-HH
3	112-0219-01	1	Spacer-Mount, 3Wd
4	108-1438	3	Washer-Hardened
5	112-0236	3	Nut-Lock
6	322-14	2	Screw-HH
7	3256-3	4	Washer-Flat
8	112-0256	1	Tool-Install, 3Wd
9	3217-6	2	Nut-Hex
10	92-9165	2	Seal



# Hydraulic Motor Assembly No. 112-0225

Ref	Part No.	Qty.	Description				
1	76-0800	1	Seal Kit				
1:1		1	Seal-Dirt And Water (Not Serviced Separately)				
1:2		1	Washer-Back Up (Not Serviced Separately)				
1:3		5	Ring-Seal (Not Serviced Separately)				
1:4		1	Washer-Back Up (Not Serviced Separately)				
1:5		1	Seal-Inner (Not Serviced Separately)				
1:6		1	Seal-Commutator (Not Serviced Separately)				

