



Manual Blade Sand/Infield Pro[®] 3040 and 5040 Traction Unit

Model No. 08714 - 260000401 and up.

Parts Catalog

Ordering Replacement Parts

To order replacement parts, please supply the part number, the quantity, and the description of each part desired.

Understanding Reference Numbers

Each Identified part in an illustration has a reference number. The reference number for a part also appears in the parts list, along with other information about the part.

This catalog uses two special reference number formats, one to indicate parts in a service assembly and another to indicate the quantity of a given part in an illustration.

Service Assembly Reference Numbers

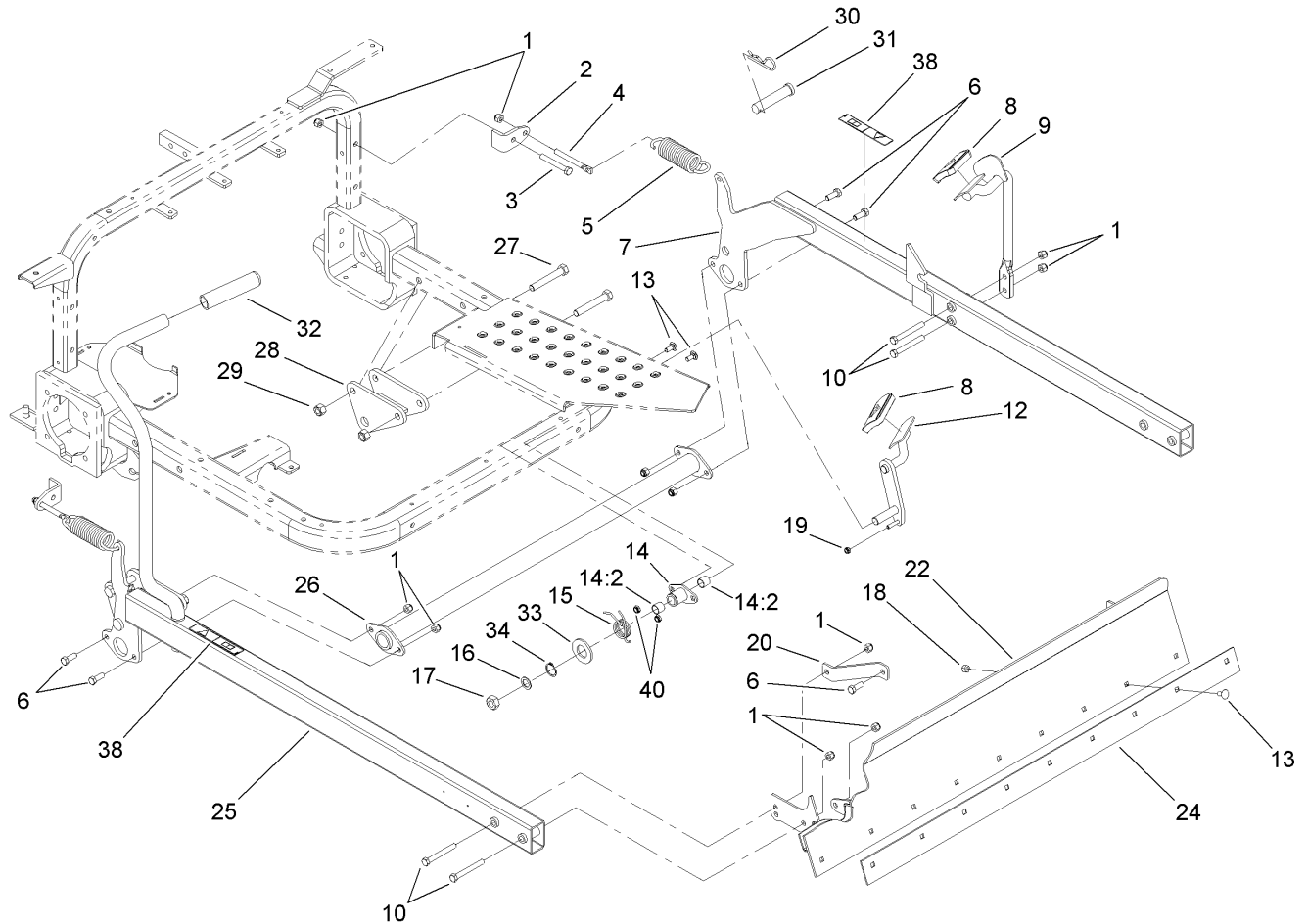
Parts in service assemblies have reference numbers in the form a:b. The a represents the reference number of the entire service assembly and the b represents a sequential number unique to each part within the service assembly.

For example, a wheel assembly might be identified by reference number 6, the tire by 6:1, the valve by 6:2, and the wheel by 6:3. When you order the assembly identified by reference number 6, you receive all parts identified by reference numbers 6:1, 6:2, and 6:3. However, you may also order any part individually. Reference numbers of this type appear in illustrations and in part lists.

Reference Numbers Indicating Quantity

In an illustration, if a reference number indicates more than one part, the reference number has the form nX y. The n represents the quantity of the part, the X is the multiplication symbol, and the y represents the reference number.

For example, in an illustration, the reference number 2X 37 means that two of the parts identified by reference number 37 are indicated.



Manual Blade Assembly

Ref	Part No.	Qty.	Description
1	3296-39	16	Nut-Lock, NI
2	108-5414	2	Bracket-Spring
3	323-13	2	Screw-HH
4	108-5413	2	Rod-Spring
5	108-5412	2	Spring-Extension
6	323-6	6	Screw-HH
7	112-7157-03	1	LH Lift Arm ASM
8	74-9100	2	Pad-Pedal, Forward
9	108-5429-03	1	Foot Pedal ASM
10	323-14	6	Screw-HH
12	108-5418-03	1	Lock Lever ASM
13	3230-1	11	Bolt-CARR
14	108-5421	1	Plate ASM
14:2	256-311	2	Bushing-Split
15	108-5424	1	Spring-Torsion
16	3256-69	1	Washer-Flat
17	3296-33	1	Nut-Lock, NI
18	3296-29	9	Nut-Lock, NI
19	3296-56	1	Nut-Lock, NI
20	108-5409-03	2	Plate-Brace
22	112-7155-03	1	Blade ASM
24	108-5406-03	1	Plate-Wear
25	112-7156-03	1	RH Lift Arm ASM
26	108-5402-03	1	Torsion Tube ASM

Ref	Part No.	Qty.	Description
27	325-13	4	Screw-HH
28	108-5427-03	2	Mount ASM
29	3296-25	4	Nut-Lock, NI
30	3290-343	2	Pin-Hair
31	108-2800	2	Pin-Clevis
32	104-9838	1	Grip-Foam
33	3256-62	1	Washer-Flat
34	32151-29	1	Ring-Retaining
38	93-9879	2	Decal-Warning
40	3296-47	2	Nut-Lock, NI