



Deck Belt Service Kit

For LX420 Tractors

Model No. 112-5880

Installation Instructions

Installation

Loose Parts

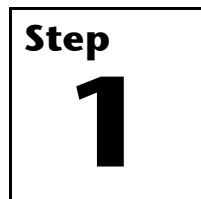
Use the chart below to verify that all parts have been shipped.

Step	Description	Qty.	Use
3	Belt	1	Install the new belt keeper and belt.
	Belt keeper	1	
	Flange locknut	1	

Important: Read and understand these instructions before performing the procedures described. If you are not a trained and experienced service and repair technician, contact an Authorized Service Dealer.

Note: Save these instructions and refer to them when ordering replacement parts.

Note: Determine the left and right sides of the machine from the operating position.



Preparing for Service

No Parts Required

Procedure

1. Move the tractor to level ground.
2. Shut off the engine, wait for all moving parts to stop, and remove the ignition key.
3. Disengage the PTO (blade) and set the parking brake.
4. Lower the deck to its lowest position.

Step

2

Removing the Mower Deck

No Parts Required

Procedure

1. Remove the engine pulley belt keeper retaining screw from under the left side of the deck (Figure 1).

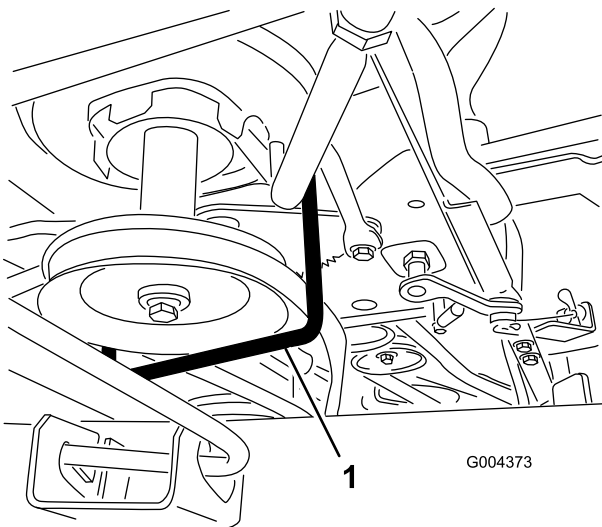


Figure 1

1. Belt keeper

Note: The other end of the belt keeper sets in a hole in the right side of the frame.

Note: Take note of the hole the rod is in before removing the belt keeper.

2. Remove the belt keeper from around the engine pulley (Figure 1).
3. Insert a 3/8-inch drive breaker bar into the 3/8-inch square hole of the idler bracket, relieve the tension in the deck drive belt, and work the belt off the engine pulley (Figure 2).

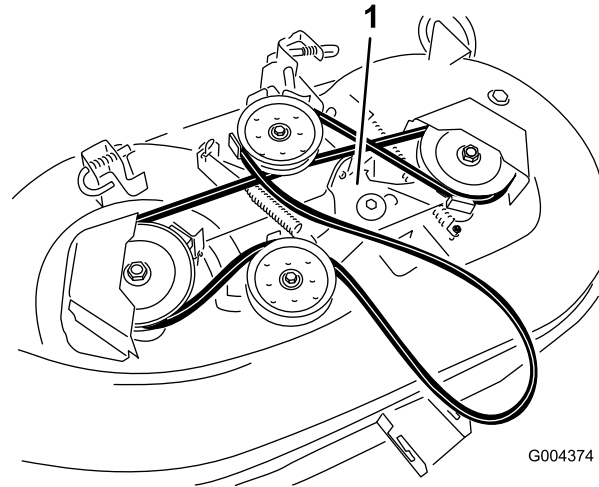


Figure 2

1. Idler bracket

4. Remove the hairpin clip from the PTO cable end fitting (Figure 3).

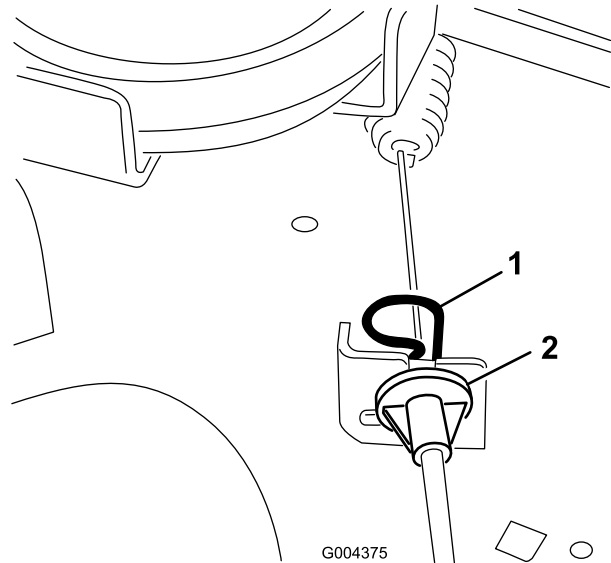


Figure 3

1. Hairpin clip
2. Cable end fitting

5. Slip the cable fitting out from the cable bracket on the deck.
6. Unhook the PTO cable spring from the idler bracket (Figure 3).
7. Release the 2 J-pins that connect the lift links to the rear hanger brackets on the deck.
8. Slide the deck forward and unhook the front hanger rod from the forward hanger bracket on the deck.
9. Slide the deck out from under the tractor.

Step

3

Installing the New Belt Keeper and Belt

Parts needed for this step:

1	Belt
1	Belt keeper
1	Flange locknut

Procedure

1. Locate the screw and spacer-style belt keeper on the tensioning idler bracket (Figure 4).

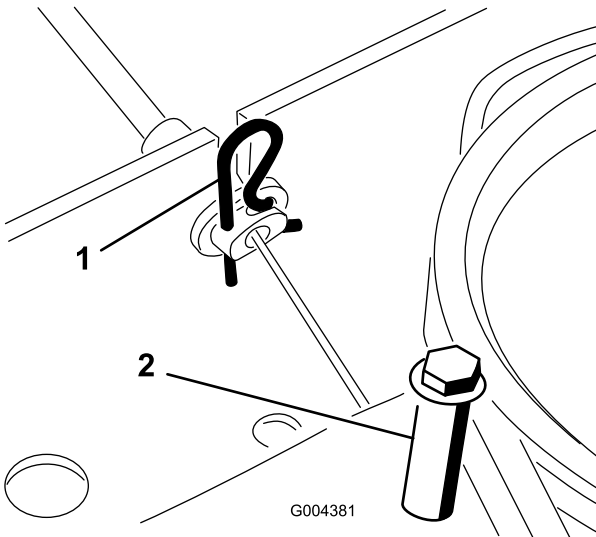


Figure 4

1. Hairpin clip
2. Screw and spacer

2. Use a 3/8-inch socket and ratchet to remove and discard the screw and spacer (Figure 4).
3. Use a 1/2-inch socket and ratchet to remove both belt covers from the left and right spindles.
4. Remove the old belt and install the new belt.
Note: Ensure that the belt is correctly routed.
5. Replace the belt covers.
6. Use the 9/16-inch socket and ratchet and a 9/16-inch box wrench to remove the screw, washer, and nut that secure the tensioning idler pulley.

7. Retain the screw and the washer.
8. Install the new belt keeper onto the pulley (Figure 5).

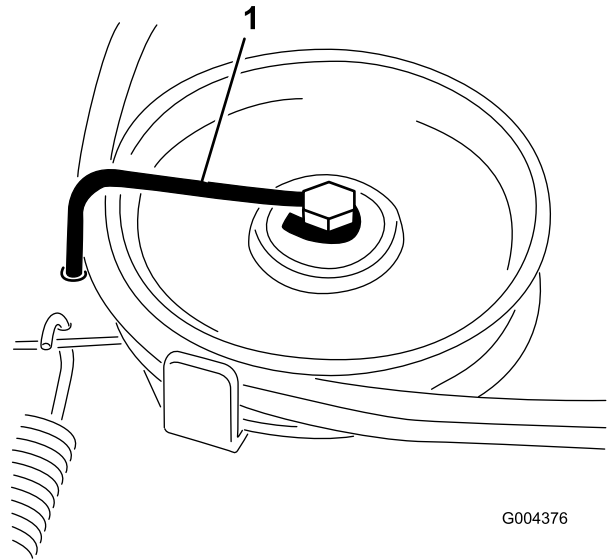


Figure 5

1. New belt keeper

9. Discard the locknut.
10. The ring end of the new belt keeper goes between the screw hex head and the washer (Figure 5).
Note: The end of the belt keeper sets in the threaded hole vacated by the screw and spacer removed in step 1. Ensure that the new belt is between the pulley and belt keeper (Figure 5).
11. Secure the idler pulley using the new flange locknut and tighten it securely.
12. To install the deck, reverse the steps in Removing the Mower Deck.

