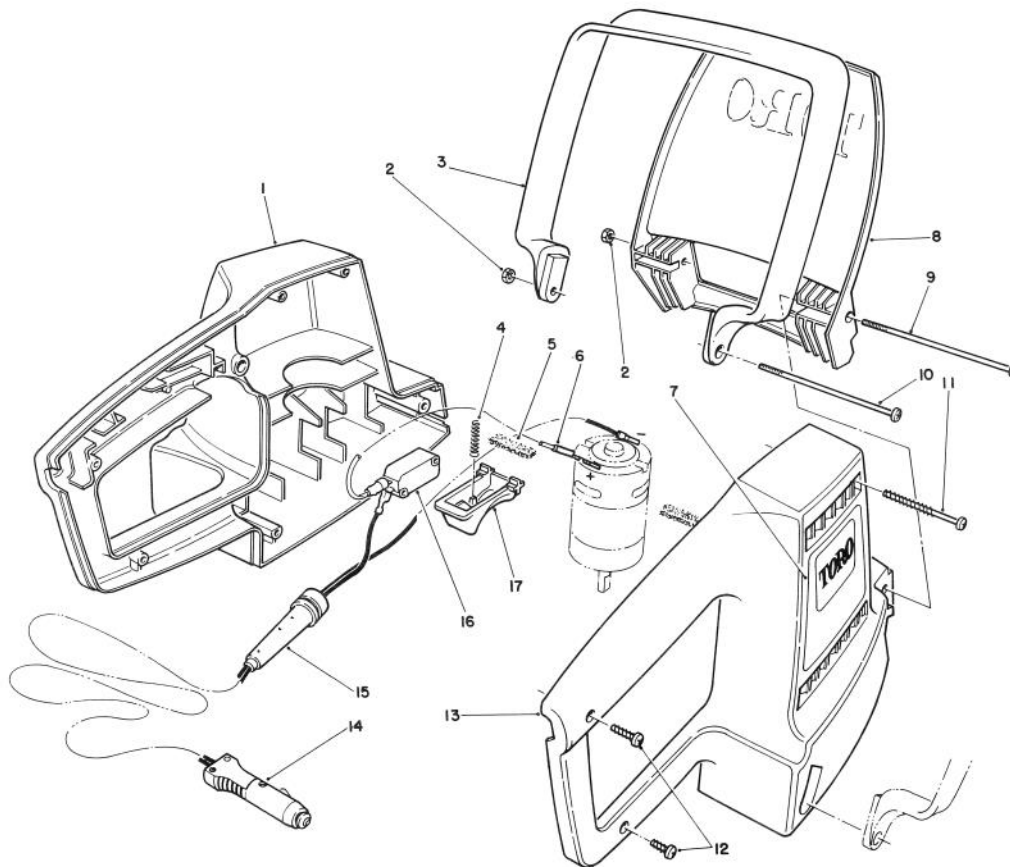




MODEL NO. 51780-0000001 & UP

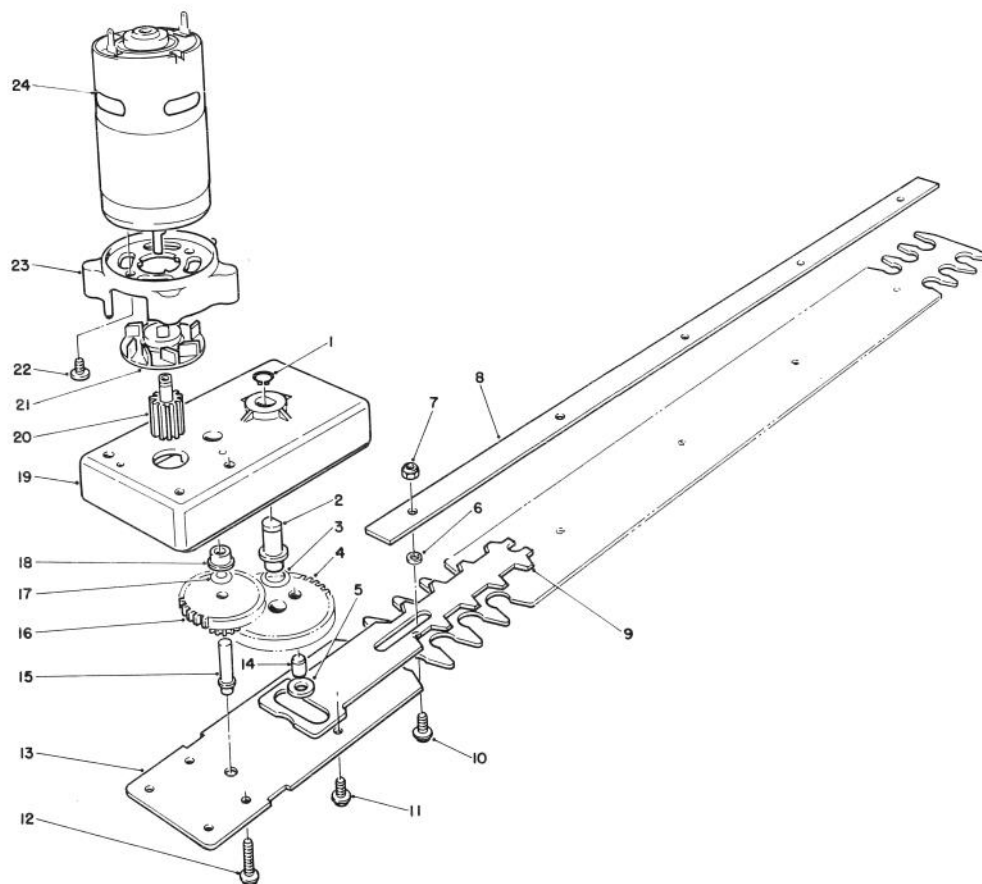
**PARTS
CATALOG**
**12V HEDGE TRIMMER
WITH BATTERY PACK**


C-0592-90

HANDLE AND SHIELD ASSEMBLY

| Ref. No. | Part No. | Description | No. Used |
|----------|----------|------------------------|----------|
| 1 | 64-8100 | Housing - Handle, L.H. | 1 |
| 2 | 3219-27 | Nut | 2 |
| 3 | 64-7830 | Handle - Assist | 1 |
| 4 | 64-8120 | Spring | 1 |
| 5 | 64-7990 | Wiper | 2 |
| 6 | 64-8140 | Wire Assembly | 1 |
| 7 | 64-8130 | Decal - Toro | 1 |
| 8 | 64-7840 | Shield | 1 |
| 9 | 3250-43 | Screw | 1 |

| Ref. No. | Part No. | Description | No. Used |
|----------|-----------|------------------------|----------|
| 10 | 3250-44 | Screw | 1 |
| 11 | 32144-104 | Screw - Thread Forming | 2 |
| 12 | 32104-118 | Screw - Thread Forming | 2 |
| 13 | 64-8090 | Housing - Handle, R.H. | 1 |
| 14 | 73-3290 | Cord - Handle | 1 |
| 15 | 64-5820 | Relief - Strain | 1 |
| 16 | 64-7970 | Switch | 1 |
| 17 | 64-8110 | Trigger - Switch | 1 |



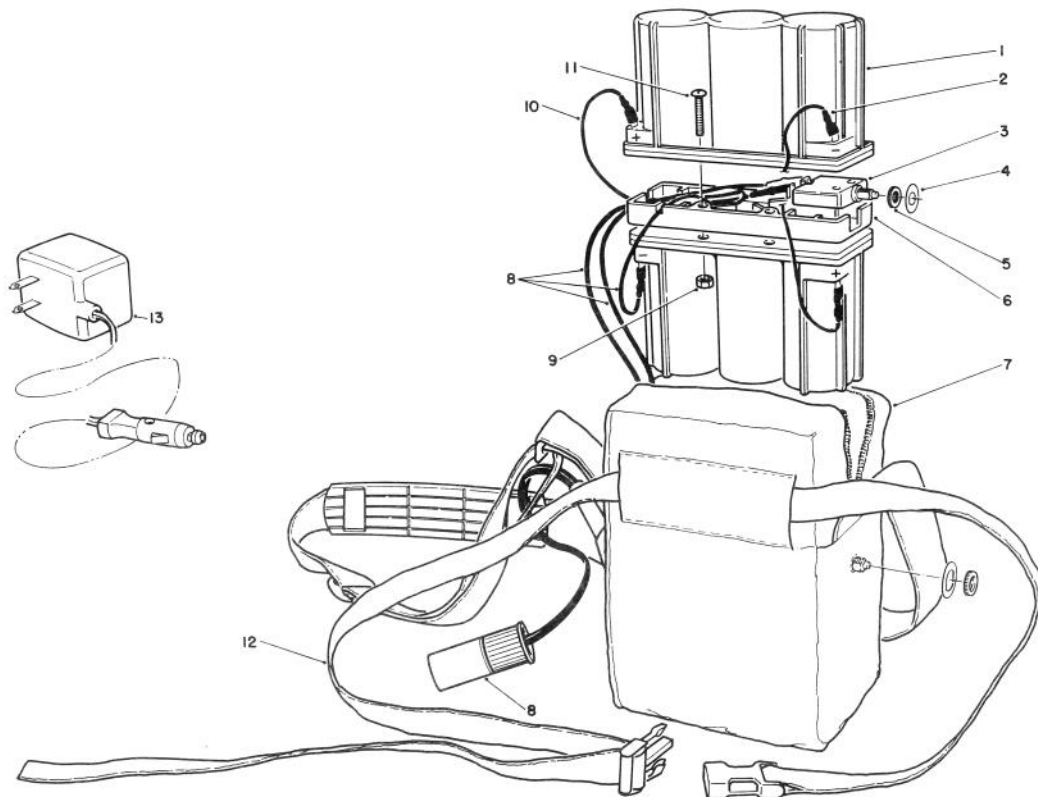
C-0593-90

GEAR BOX AND BLADE ASSEMBLY

| Ref. No. | Part No. | Description | No. Used |
|----------|-----------|----------------------------------|----------|
| 1 | | Ring - Retaining | 1 |
| 2 | | Shaft - Driver | 1 |
| 3 | 64-8200 | Washer - Wave | 1 |
| 4 | 64-8010 | Gear - Drive (Incl. Ref. #14) | 1 |
| 5 | 64-7880 | Bushing - Gear, Drive | 1 |
| 6 | 64-8080 | Bushing - Blade | 5 |
| 7 | 3296-54 | Nut - Lock | 5 |
| 8 | 64-8070 | Retainer - Blade | 1 |
| 9 | 64-8050 | Blade - Cutting | 1 |
| 10 | 73-2610 | Screw - Hex Washer Hd. | 5 |
| 11 | 32144-87 | Screw - Hex Washer Hd. | 2 |
| 12 | 32144-103 | Screw - Hex Washer Hd. | 4 |
| 13 | | Blade - Bottom | 1 |
| 14 | 64-8030 | Pin - Drive | 1 |
| 15 | 64-7950 | Shaft - Idler | 1 |

| Ref. No. | Part No. | Description | No. Used |
|----------|----------|---|----------|
| 16 | 64-7960 | Gear - Idler | 1 |
| 17 | 64-8000 | Washer - Wave | 1 |
| 18 | | Bearing - Idler | 1 |
| 19 | 73-1780 | Housing - Gear Assembly (Incl. Ref. 2 & 18) | 1 |
| 20 | | Gear - Motor | 1 |
| 21 | | Fan - Motor | 1 |
| 22 | | Screw - Phil. Pan Hd. | 2 |
| 23 | | Support - Motor | 1 |
| 24 | 64-7900 | Motor Assembly (Incl. Ref. #20-23) | 1 |
| * | 64-7850 | Gear Box & Blade Complete (Incl. Ref. #1-24) | 1 |
| * | 64-8040 | Blade Assembly (Incl. Ref. #6-10 & 13) | 1 |

*Not Illustrated



C-0595-90

BATTERY PACK ASSEMBLY

| Ref. No. | Part No. | Description | No. Used |
|----------|----------|--------------------------|----------|
| 1 | 73-3190 | Battery - 6 Volt | 2 |
| 2 | 73-3260 | Wire - Battery | 1 |
| 3 | 64-5570 | Circuit Breaker | 1 |
| 4 | 73-3240 | Plate - Breaker, Circuit | 2 |
| 5 | 73-3230 | Nut - Knurled | 2 |
| 6 | 73-3220 | Spacer - Battery | 1 |
| 7 | 64-8330 | Pack - Soft | 1 |

| Ref. No. | Part No. | Description | No. Used |
|----------|----------|---------------------------|----------|
| 8 | 73-3310 | Cord - Battery | 1 |
| 9 | 3217-26 | Nut | 4 |
| 10 | 73-3270 | Wire - Breaker, Circuit | 1 |
| 11 | 3250-23 | Screw - Phillips, Pan Hd. | 4 |
| 12 | 64-8360 | Belt | 1 |
| 13 | 64-8400 | Charger 12 Volt | 1 |

PRODUCT CHANGES

In an effort to make improvements available to TORO owners as quickly as possible, minor changes are incorporated into Toro's products from time to time that do not become immediately shown in the Parts Catalog. If such a change has been made in your unit, which is not reflected in your manual, see your TORO Distributor or his Authorized TORO Service Dealer for information and part numbers.

COUNTRIES OTHER THAN THE UNITED STATES OR CANADA

Customers who have purchased TORO products exported from the United States or Canada should contact their Toro Distributor (Dealer) to obtain guarantee policies for your country, province or state. If for any

reason you are dissatisfied with your Distributor's service or have difficulty obtaining guarantee information, contact the TORO importer. If all other remedies fail, you may contact us at The Toro Company.

MAINTENANCE RECORD

[illegible]

Compliance with Radio Interference Regulations Certified.
Certifie Conforme au Reglement sur le Brouillage Radioelectrique.