



## Electric Bed Lift Kit

### Electric-Powered Mid-Duty Workman® Utility Vehicle

Model No. 07263 - 270000001 and up.

## Parts Catalog

### Ordering Replacement Parts

To order replacement parts, please supply the part number, the quantity, and the description of each part desired.

### Understanding Reference Numbers

Each Identified part in an illustration has a reference number. The reference number for a part also appears in the parts list, along with other information about the part.

This catalog uses two special reference number formats, one to indicate parts in a service assembly and another to indicate the quantity of a given part in an illustration.

### Service Assembly Reference Numbers

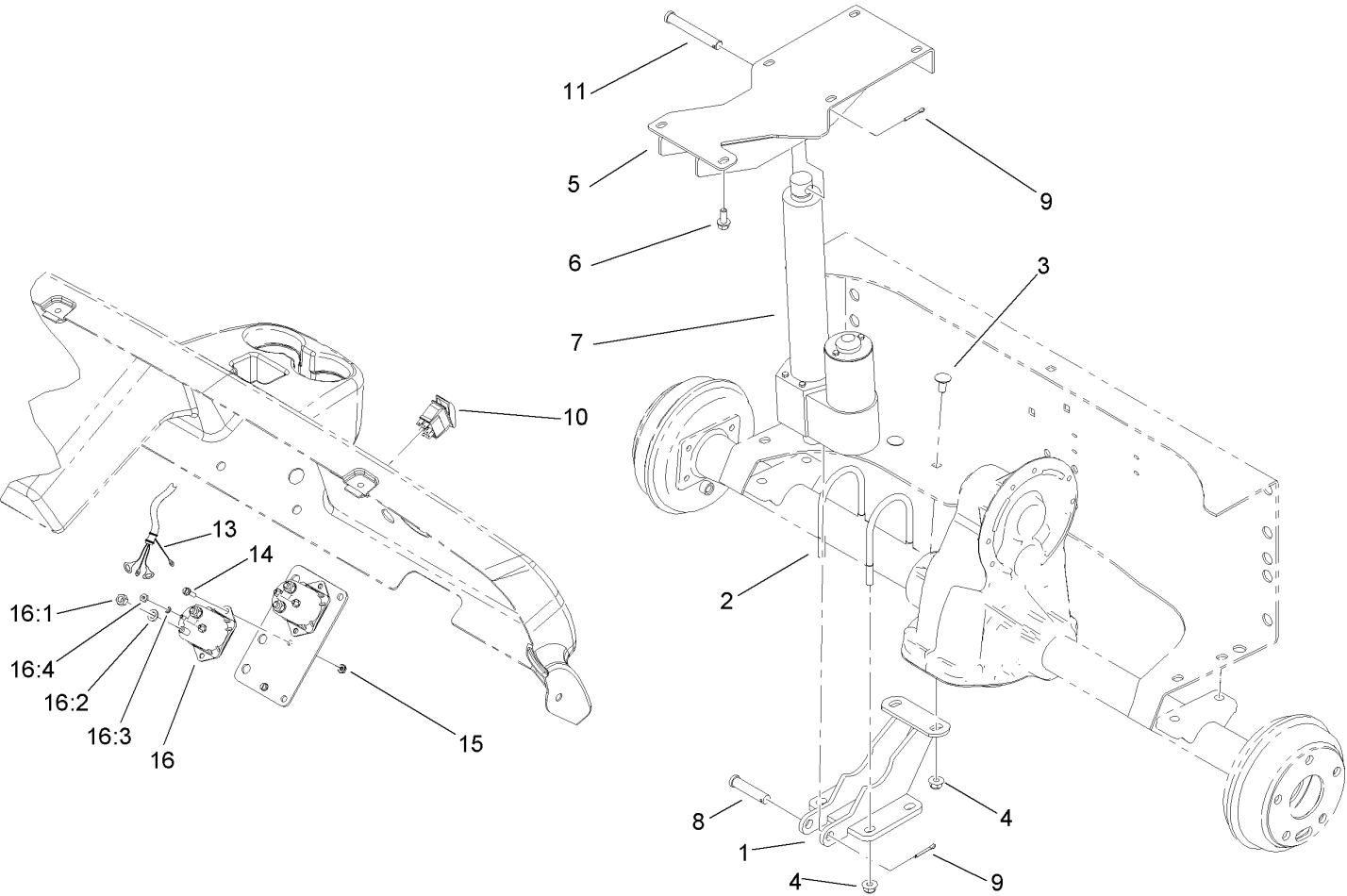
Parts in service assemblies have reference numbers in the form a:b. The a represents the reference number of the entire service assembly and the b represents a sequential number unique to each part within the service assembly.

For example, a wheel assembly might be identified by reference number 6, the tire by 6:1, the valve by 6:2, and the wheel by 6:3. When you order the assembly identified by reference number 6, you receive all parts identified by reference numbers 6:1, 6:2, and 6:3. However, you may also order any part individually. Reference numbers of this type appear in illustrations and in part lists.

### Reference Numbers Indicating Quantity

In an illustration, if a reference number indicates more than one part, the reference number has the form nX y. The n represents the quantity of the part, the X is the multiplication symbol, and the y represents the reference number.

For example, in an illustration, the reference number 2X 37 means that two of the parts identified by reference number 37 are indicated.



# Electric Bed Lift Kit Assembly

Ref	Part No.	Qty.	Description				
1	104-7232-03	1	Support-Cylinder, Lift				
2	99-7759	2	U-Bolt				
3	3231-30	2	Screw-CARR				
4	104-8301	6	Nut-Flange, NI				
5	112-3080-03	1	Lift Bracket ASM				
6	3234-5	4	Screw-HHF				
7	112-3090	1	Actuator-Linear, 48V (8 Inch)				
8	92-2739	1	Pin-Clevis				
9	3272-11	2	Pin-Cotter				
10	107-0748	1	Switch-Rocker				
11	283-69	1	Pin-Clevis				
13	107-0715	1	Harness-Wire				
14	32105-13	2	Screw-SHH				
15	32149-7	2	Nut-Keps				
16	104-7135	1	Solenoid				
16:1	3217-6	2	Nut-Hex				
16:2	3253-4	2	Washer-Lock				
16:3	3219-14	2	Nut-Hex				
16:4	3253-17	2	Washer-Lock				