



## **Left-Hand Axle End Assembly**

### **Groundsmaster® 4500-D/4700-D**

### **Reelmaster® 6500-D/6700-D Traction Unit**

**Model No. 106-1151**

## **Parts Catalog**

### **Ordering Replacement Parts**

To order replacement parts, please supply the part number, the quantity, and the description of each part desired.

### **Understanding Reference Numbers**

Each Identified part in an illustration has a reference number. The reference number for a part also appears in the parts list, along with other information about the part.

This catalog uses two special reference number formats, one to indicate parts in a service assembly and another to indicate the quantity of a given part in an illustration.

### **Service Assembly Reference Numbers**

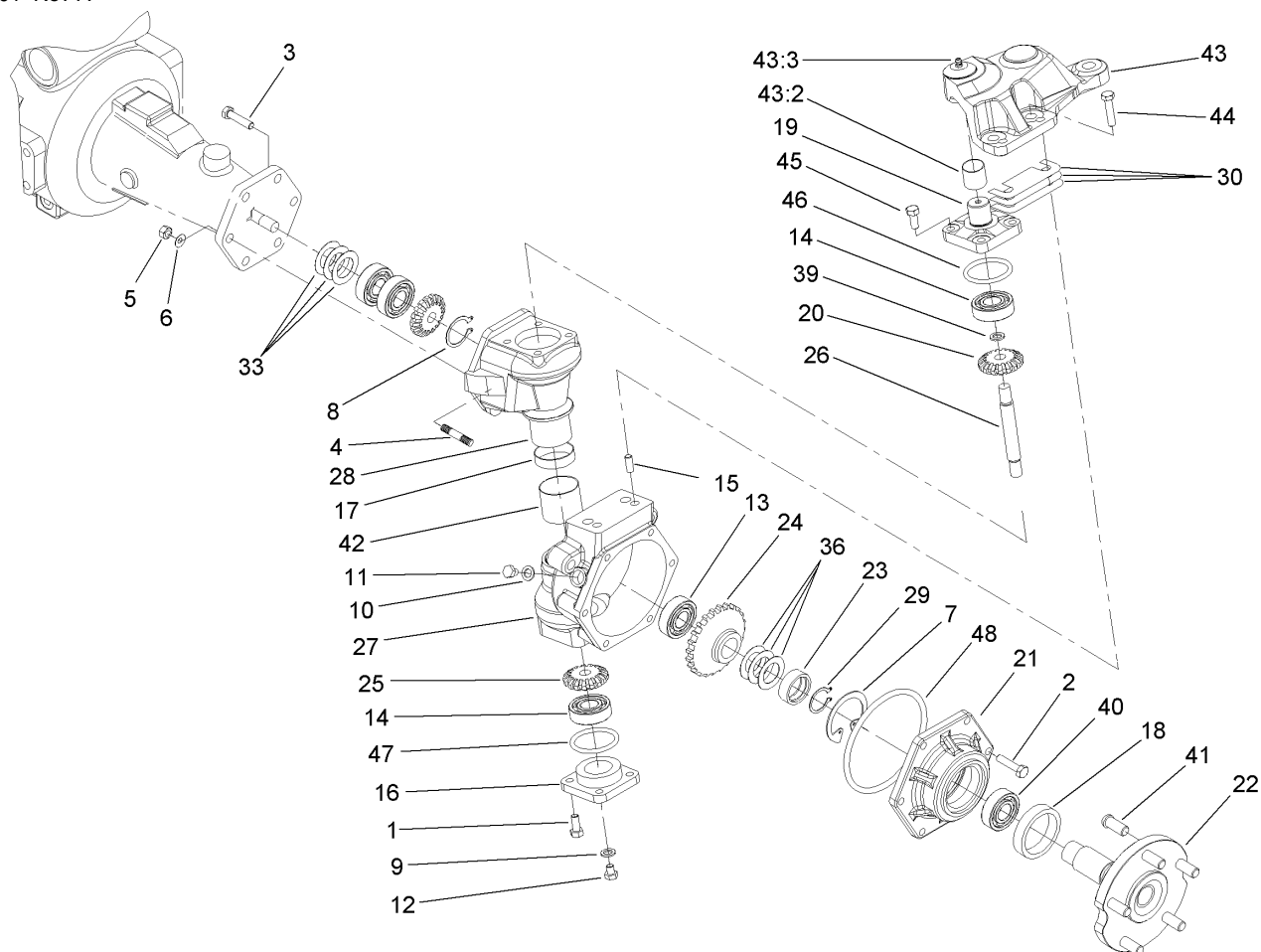
Parts in service assemblies have reference numbers in the form a:b. The a represents the reference number of the entire service assembly and the b represents a sequential number unique to each part within the service assembly.

For example, a wheel assembly might be identified by reference number 6, the tire by 6:1, the valve by 6:2, and the wheel by 6:3. When you order the assembly identified by reference number 6, you receive all parts identified by reference numbers 6:1, 6:2, and 6:3. However, you may also order any part individually. Reference numbers of this type appear in illustrations and in part lists.

### **Reference Numbers Indicating Quantity**

In an illustration, if a reference number indicates more than one part, the reference number has the form nX y. The n represents the quantity of the part, the X is the multiplication symbol, and the y represents the reference number.

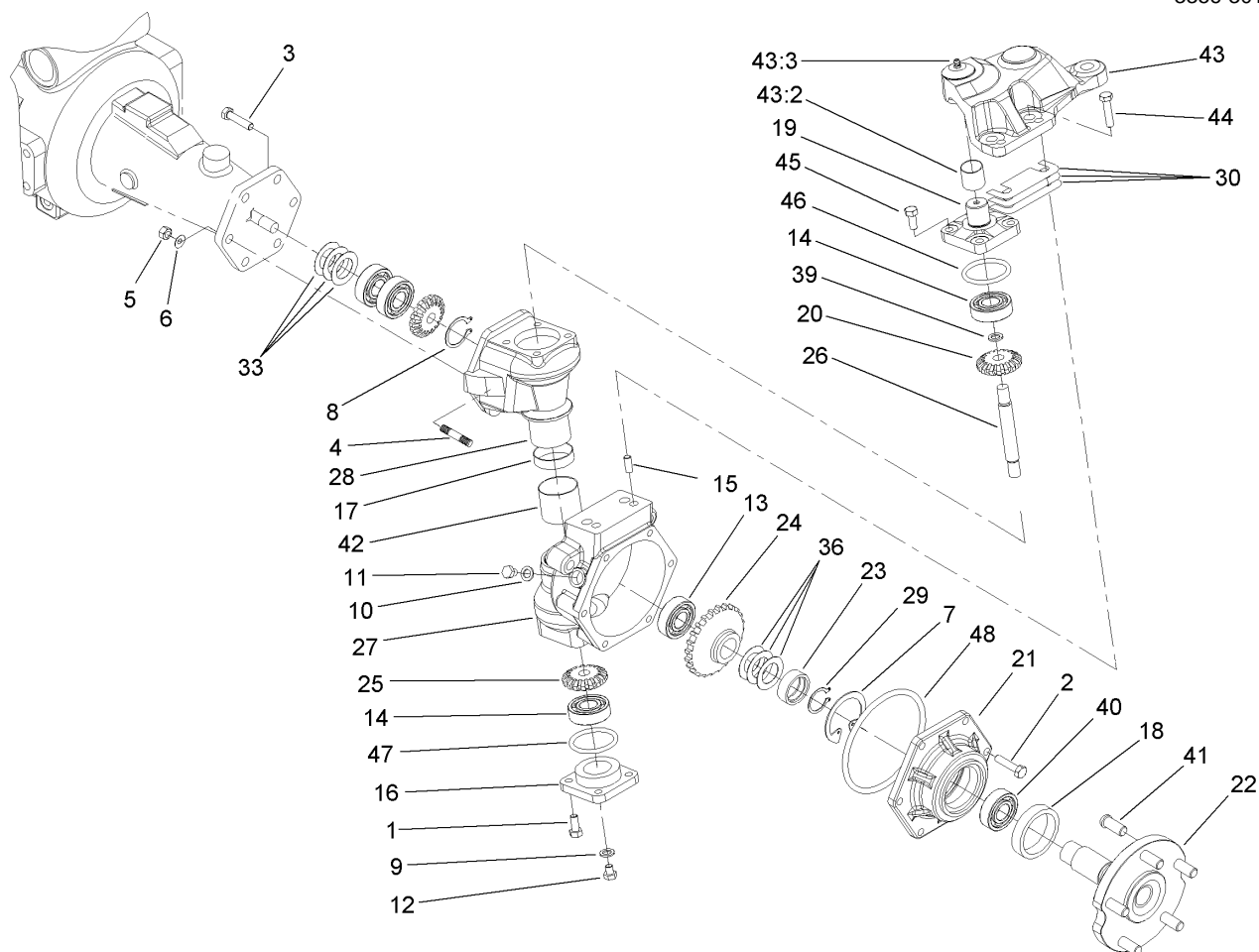
For example, in an illustration, the reference number 2X 37 means that two of the parts identified by reference number 37 are indicated.



## Left-Hand Axle End Assembly

Ref	Part No.	Qty.	Description
1	100-2562	4	Bolt
2	99-7596	6	Bolt
3	99-7599	4	Bolt
4	99-7525	2	Stud
5	99-7526	2	Nut
6	99-7527	2	Washer-Spring
7	99-7539	1	Clip
8	99-7531	1	Clip
9	99-7590	2	Washer-Seal
10	99-7536	1	Washer-Seal
11	99-7535	1	Plug
12	99-7589	2	Plug
13	99-7534	1	Bearing-Ball
14	99-7532	2	Bearing-Roller, Taper
15	99-7597	2	Pin-Dowel
16	100-2560	1	Cover
17	110-4754	1	Seal-Oil
18	99-7564	1	Seal-Oil
19	104-2373	1	Knuckle
20	95-7519	1	Gear-Bevel, 17 Tooth
21	95-7521	1	Cover-Axle
22	95-7522	1	Axle
23	95-7523	1	Spacer
24	95-7524	1	Gear-Bevel, 29 Tooth

Ref	Part No.	Qty.	Description
25	95-7527	1	Gear-Bevel, 17 Tooth
26	110-4753	1	Shaft-Gear, Bevel
27	110-4751	1	Case-Axle
28	110-4752	1	Case-Gear, Bevel
29	95-7544	2	Clip
30	95-7547	1	Shim 0.1
30	95-7548	1	Shim 0.2
30	95-7549	1	Shim 0.4
33	99-7552	1	Shim 0.1
33	99-7553	1	Shim 0.2
33	99-7554	1	Shim 0.5
36	99-7555	1	Shim 0.3
36	99-7556	1	Shim 0.2
36	99-7557	1	Shim 0.5
39	99-7558	1	Collar
40	99-7561	1	Bearing-Ball
41	99-7563	5	Stud
42	104-2378	1	Bushing
43	100-3768	1	LH Steering Arm ASM
43:2	104-8634	1	Bushing
43:3	106-1104	2	Fitting-Grease
44	104-2375	2	Bolt
45	104-2374	4	Bolt
46	106-1069	1	O-Ring



## Left-Hand Axle End Assembly (continued)

Ref	Part No.	Qty.	Description
47	106-1070	1	O-Ring
48	106-1071	1	O-Ring

