



**Z Stand<sup>®</sup> Kit**  
**400 Series Z Masters**  
 Part No. 107-8599

Form No. 3352-476 Rev B

**Installation Instructions**

**Safety and Instruction Decals**



Safety decals and instructions are easily visible to the operator and are located near any area of potential danger. Replace any decal that is damaged or lost.



**104-7759**

**Loose Parts**

**Note:** Use the chart below to identify parts for assembly.

DESCRIPTION	QTY.	USE
Z Stand hub	1	Assembling the Z Stand hub
Bracket latch	1	
Bolt, 3/8 x 1-1/2 inch	1	
Lock nut, 3/8 inch	1	
Z Stand hub	1	Installing the Z Stand hub
Bolt, 3/8 x 3-1/2 inch	3	
Lock nut, 3/8 inch	3	
Hair Pin cotter	2	
Clevis pin, 3 inch	2	

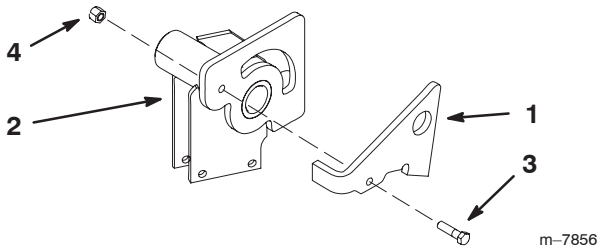
DESCRIPTION	QTY.	USE
Z Stand foot	1	Installing the Z Stand
Z Stand tube	1	
Thrust washers	2	
Lynch pin	1	
Hair pin cotter	2	
Clevis pin	2	
Z Stand cradle bracket	1	Installing the Z Stand cradle bracket
Bolt, 3/8 x 3-1/4 inch	1	
Lock Nut, 3/8 inch	1	
Bolt, 1/4 x 3/4 inch	1	
Lock Nut, 1/4 inch	1	
Lanyard	1	

The following instructions are for installing the Z Stand on a 400 Series Z Master.

## Assembling the Z Stand Hub

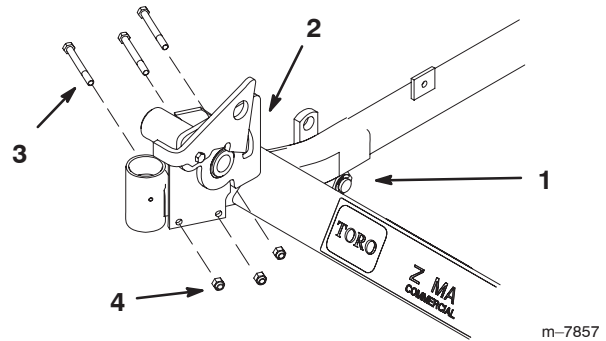
1. Install the bracket latch to the Z Stand hub with a bolt (3/8 x 1-1/2 inch) and lock nut (3/8 inch) (Fig. 1).

**Note:** Tighten the nut and bolt. Then, unscrew it one full turn or until the latch will freely rotate (Fig. 1).



**Figure 1**

- |                  |                           |
|------------------|---------------------------|
| 1. Bracket latch | 3. Bolt, 3/8 x 1-1/2 inch |
| 2. Z Stand hub   | 4. Lock Nut, 3/8 inch     |



**Figure 2**

- |                         |                           |
|-------------------------|---------------------------|
| 1. Right front frame    | 3. Bolt, 3/8 x 3-1/2 inch |
| 2. Z Stand hub assembly | 4. Lock Nut, 3/8 inch     |

## Installing the Z Stand Hub

1. Place the Z Stand hub on the right front frame as shown in Figure 2.

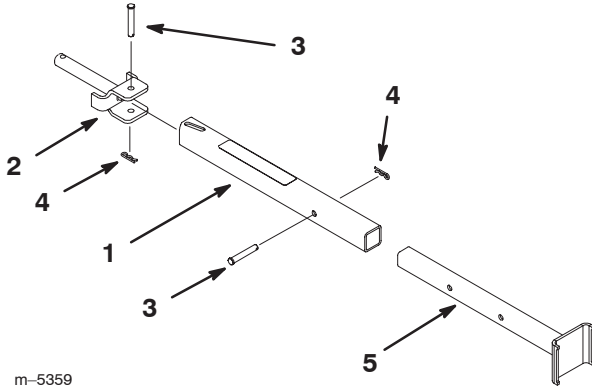
**Note:** Make sure the Z Stand hub assembly is against the front caster housing.

2. Install Z Stand hub to frame with 3 bolts (3/8 x 3-1/2 inch) and 3 lock nuts (3/8 inch) (Fig. 2).

**Note:** Install bolts as shown in Figure 2.

## Installing the Z Stand

1. Place the foot part of stand into the Z Stand tube. Align holes and secure with a clevis pin (2-5/8 inch) and hair pin cotter (Fig. 3).
2. Install the Z Stand assembly to the pivot pin with a clevis pin (3 inch) and hair pin cotter (Fig. 3).

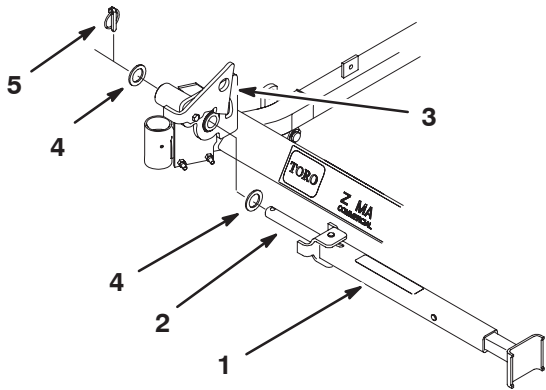


m-5359

**Figure 3**

- |                       |                    |
|-----------------------|--------------------|
| 1. Z Stand tube       | 4. Hair pin cotter |
| 2. Pivot Pin          | 5. Z Stand foot    |
| 3. Clevis Pin, 3 inch |                    |

3. Place a thrust washer onto the pivot pin (Fig. 4).
  4. Insert the pivot pin into the Z Stand hub as shown in Figure 4.
- Note:** When inserting the pivot pin, make sure the position of slot in tube is as shown in Figure 3.
5. Place a thrust washer onto the pivot pin and secure with a lynch pin (Fig. 4).



m-7858

**Figure 4**

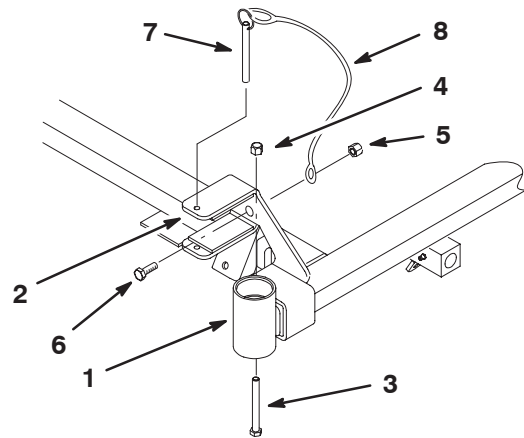
- |                |                  |
|----------------|------------------|
| 1. Z Stand     | 4. Thrust washer |
| 2. Pivot Pin   | 5. Lynch pin     |
| 3. Z Stand hub |                  |

## Installing the Z Stand Cradle Bracket

1. Place the Z Stand cradle bracket onto the left front frame as shown in Figure 5.
2. Install the Z Stand cradle bracket with a bolt (3/8 x 3-1/4 inch) and lock nut (3/8 inch) (Fig. 5).

**Note:** Install the bolt as shown in Figure 5.

3. Install the lanyard to bracket pin. Use large loop on lanyard (Fig. 5).
4. Install the lanyard with a bolt (1/4 x 3/4 inch) and lock nut (1/4 inch) (Fig. 5).



m-7860

**Figure 5**

- |                              |                         |
|------------------------------|-------------------------|
| 1. Left front caster housing | 5. Lock Nut, 1/4 inch   |
| 2. Z Stand cradle bracket    | 6. Bolt, 1/4 x 3/4 inch |
| 3. Bolt, 3/8 x 3-1/4 inch    | 7. Lanyard              |
| 4. Lock Nut, 3/8 inch        | 8. Bracket Pin          |

## Using the Z Stand

The Z Stand is used for raising the front end of the machine. This allows for cleaning of the deck and removal of the blades.

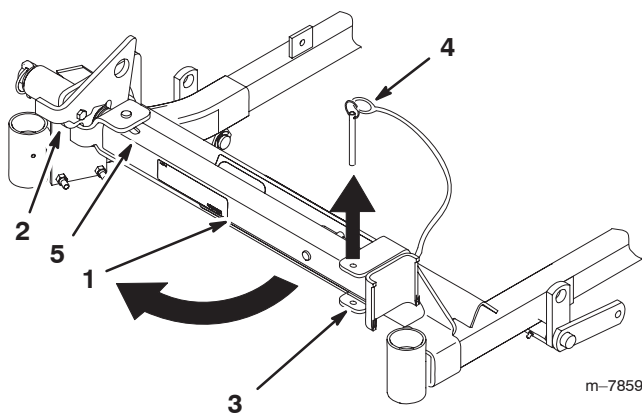
! **Warning** !

**Unit could fall onto someone and cause serious injury or death.**

- Use extreme caution when operating unit on Z Stand.
- Use only for cleaning deck and removing blades.
- Do not keep unit on Z Stand for extended periods of time.
- Always shut engine off and set parking brake before performing any maintenance to deck.

### Driving up onto the Z Stand

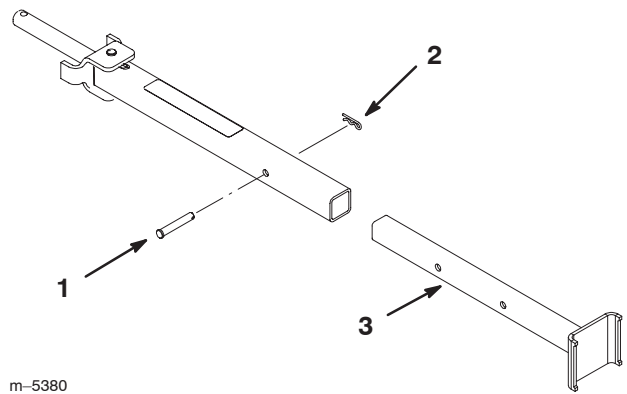
1. Raise the deck to the transport position.
2. Remove the bracket pin (Fig. 6).



**Figure 6**

- |                   |                   |
|-------------------|-------------------|
| 1. Z Stand        | 4. Bracket Pin    |
| 2. Latch          | 5. Bottom of slot |
| 3. Cradle bracket |                   |

3. Raise the latch. Swing the stand foot out front and slide stand toward machine, into the bottom of slot (Fig. 6 and 8).
4. Remove the cotter hair pin and clevis pin (Fig. 7).
5. Pull out the foot part of stand and insert the clevis pins and cotter hair pins (Fig. 7).



m-5380

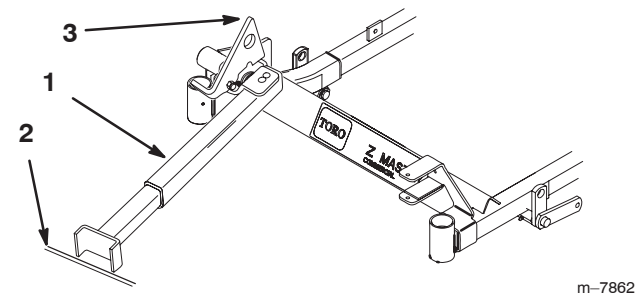
**Figure 7**

- |                    |                 |
|--------------------|-----------------|
| 1. Clevis Pin      | 3. Z Stand foot |
| 2. Hair pin cotter |                 |

6. Set the foot of the stand on the ground and rest the latch on the pivot tab (Fig. 8).

7. Start the engine and put it at half throttle.

**Note:** For best results, place foot of stand into seams in sidewalks or into turf (Fig. 8).



m-7862

**Figure 8**

- |                                 |                               |
|---------------------------------|-------------------------------|
| 1. Z Stand (Positioned in slot) | 2. Crack in side walk or turf |
|                                 | 3. Latch resting on pivot tab |

8. Drive onto the stand. Stop when the latch drops over the tab into locked position (Fig. 9). Once onto the stand, engage the parking brake. Shut off the engine.

9. Chock or block the drive wheels.

! **Warning** !

**Parking brake may not hold machine parked on Z Stand and could cause personal injury or property damage.**

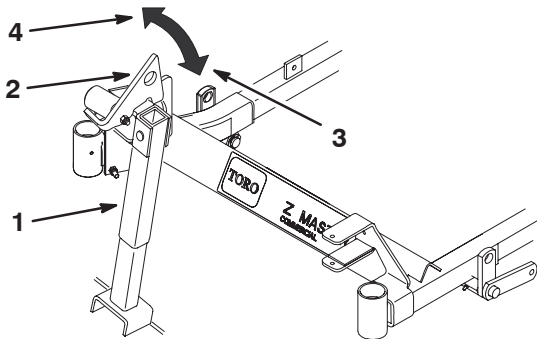
**Do not park on Z Stand unless wheels are chocked or blocked.**

10. Perform maintenance.

11. Remove the chocks or blocks.

## Driving off the Z Stand

1. Raise latch to unlocked position (Fig. 9).
2. Start engine and place at half throttle. Disengage parking brake.
3. Slowly drive backwards off of stand.
4. Remove the cotter hair pins and stand pins (Fig. 7).
5. Push in the inner part of stand and insert stand pins and cotter hair pins (Fig. 7).
6. Return stand to its rest position (Fig. 6).
7. Insert bracket pin into Z Stand cradle bracket (Fig. 6).



**Figure 9**

- |            |                      |
|------------|----------------------|
| 1. Z Stand | 3. Locked position   |
| 2. Latch   | 4. Unlocked position |





