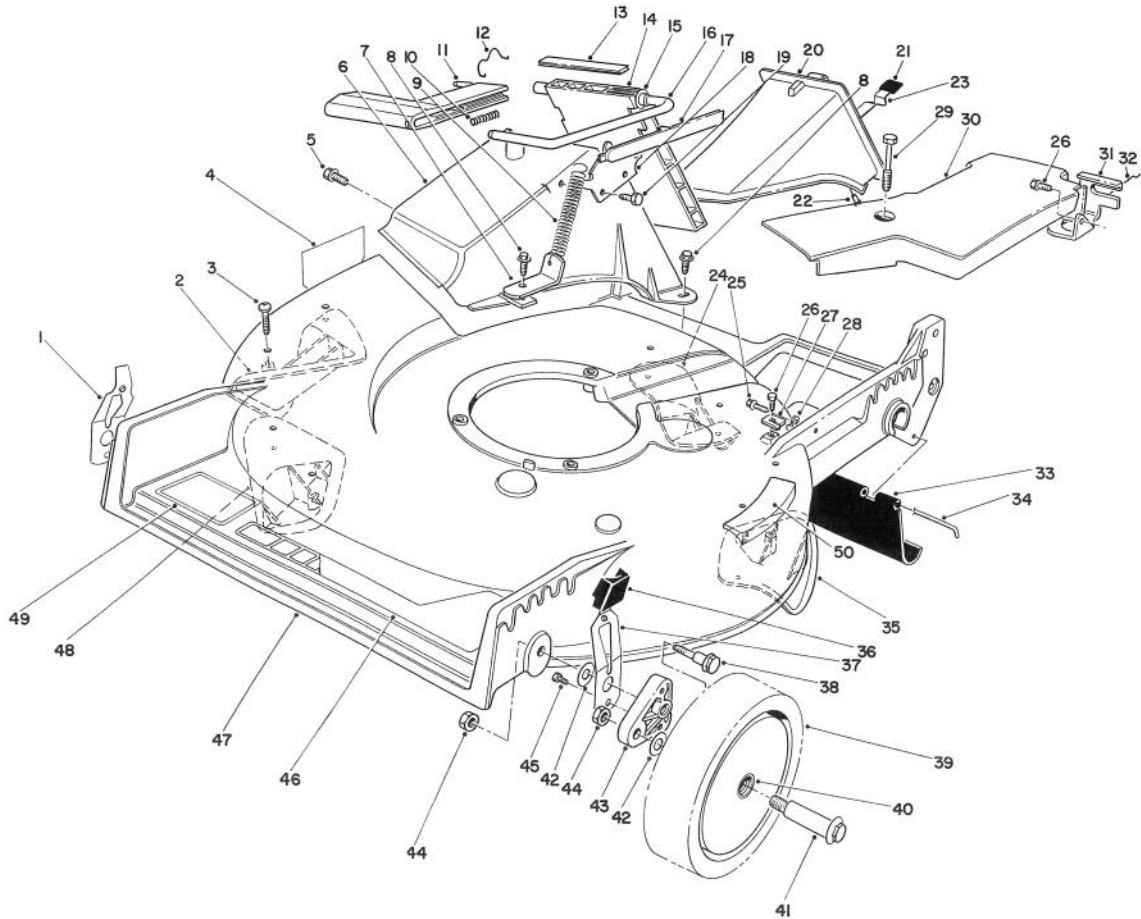




MODEL NO. 20211-100001 & UP

PARTS CATALOG

21" S.P. RECYCLER™

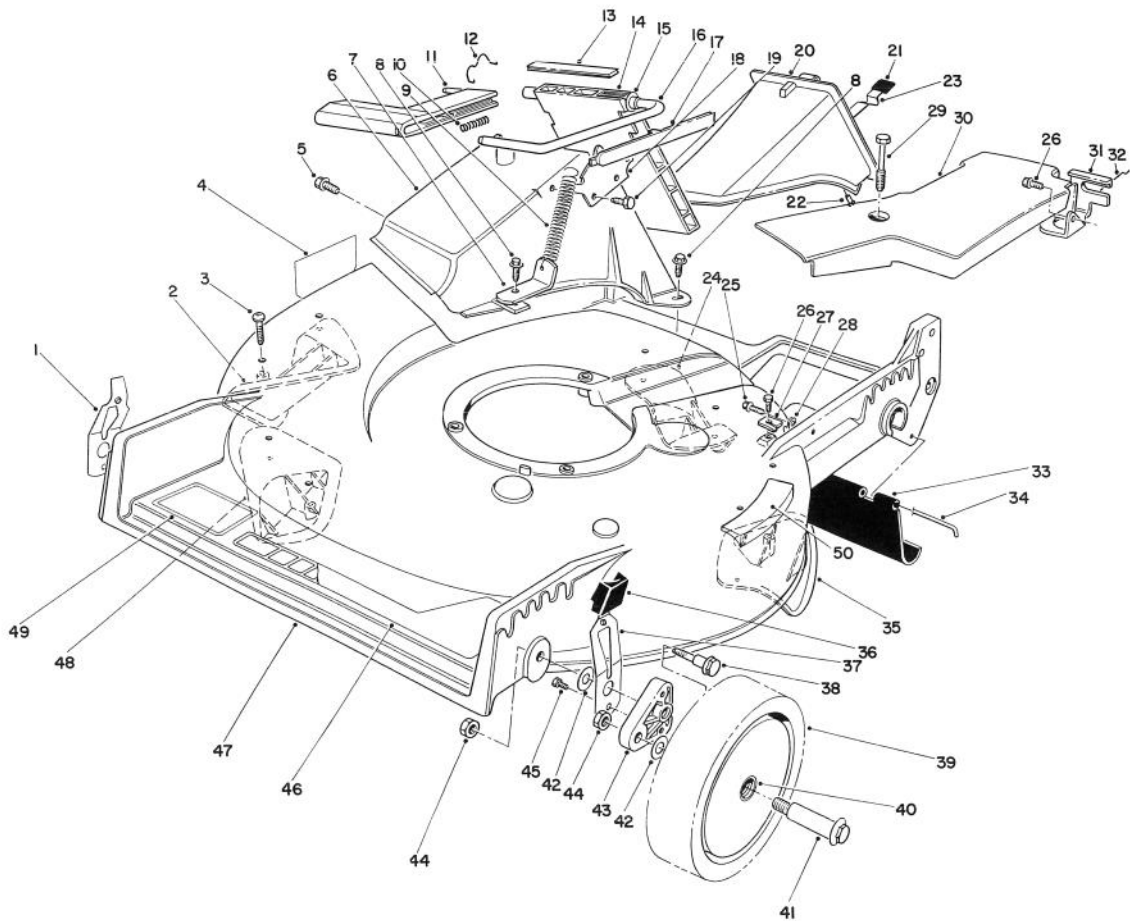


C-0614

HOUSING ASSEMBLY

| Ref. No. | Part No. | Description | No. Used |
|----------|-----------|--|----------|
| 1 | 71-0560 | Spring Arm Ass'y R.H. | 1 |
| 2 | 76-2130 | Plate - Kicker Left Front | 1 |
| 3 | 32104-130 | Screw - Pan Hd. | 8 |
| 4 | 43-8480 | Decal - Danger | 1 |
| 5 | 46-6810 | Screw & Washer Ass'y | 1 |
| 6 | 46-3501 | Tunnel - Discharge | 1 |
| 7 | 80-3780 | Bracket - Spring | 1 |
| 8 | 46-6811 | Screw - Thread Forming Hex Washer Hd. | 3 |
| 9 | 76-4660 | Spring - Door | 1 |
| 10 | 46-7060 | Spring - Compression | 1 |
| 11 | 46-3520 | Handle - Door | 1 |
| 12 | 47-5840 | Door - Retainer | 1 |
| 13 | 46-6821 | Cover - Door | 1 |

| Ref. No. | Part No. | Description | No. Used |
|----------|----------|--|----------|
| 14 | 46-3511 | Door - Discharge | 1 |
| 15 | 23-0880 | Bushing | 1 |
| 16 | 76-4580 | Rod - Door | 1 |
| 17 | 49-4170 | Cover - Handle | 1 |
| 18 | 76-4570 | Plate - Latch | 1 |
| 19 | 46-8090 | Screw - Self Tapping Hex Washer Hd. | 2 |
| 20 | 77-0500 | Plug Assembly (Incl. Ref. #21-23) | 1 |
| 21 | 76-4650 | Grip - Latch | 1 |
| 22 | 3295-35 | Rivet - Solid | 1 |
| 23 | 76-4640 | Latch - Discharge Plug | 1 |
| 24 | 76-2150 | Plate - Kicker Left Rear | 1 |
| 25 | 12-5450 | Screw - Self Tapping | 1 |



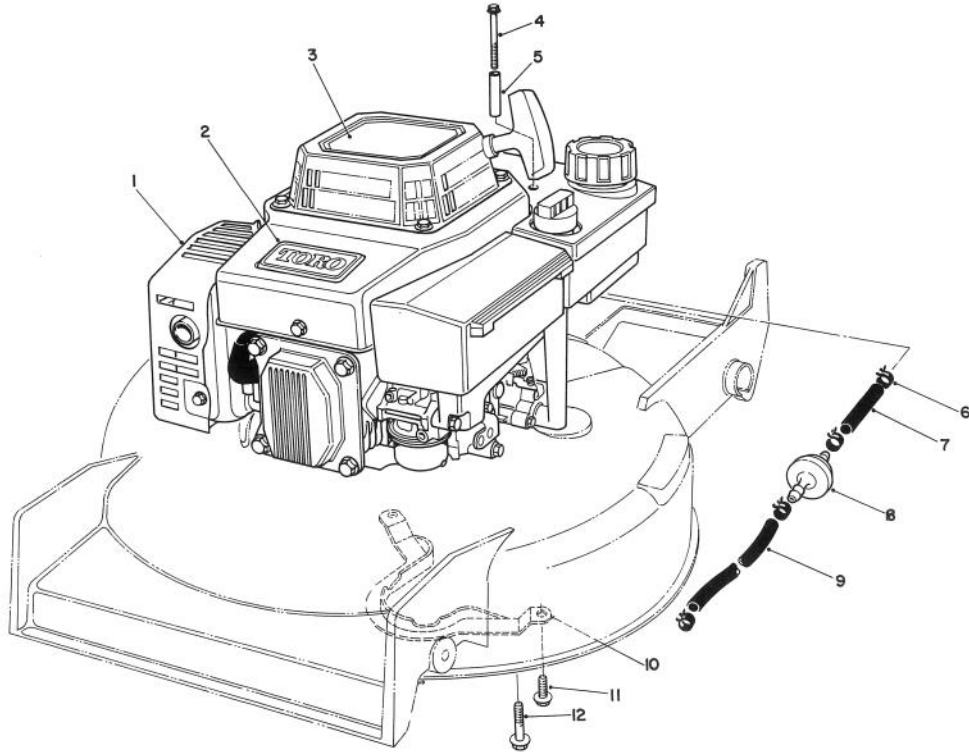
C-0614

HOUSING ASSEMBLY (CONTINUED)

| Ref. No. | Part No. | Description | No. Used |
|----------|----------|---|----------|
| 26 | 32144-70 | Screw - Thread Forming Hex Washer Hd. | 2 |
| 27 | 62-3720 | Clamp - Cable | 1 |
| 28 | 2412-83 | R-Clamp | 1 |
| 29 | 37-7260 | Capscrew - Special | 2 |
| 30 | 62-4314 | Cover - Belt | 1 |
| 31 | 62-3940 | Bracket - Traction Adj. | 1 |
| 32 | 46-7030 | Retainer - Cable | 1 |
| 33 | 44-0580 | Shield - Trailing | 1 |
| 34 | 33-3208 | Rod - Shield | 1 |
| 35 | 76-2140 | Plate -Kicker Right Rear | 1 |
| 36 | 25-7740 | Knob - Arm | 2 |
| 37 | 71-0570 | Spring Arm Ass'y - L.H. | 1 |
| 38 | 66-0561 | Screw - Shoulder | 2 |
| 39 | 11-9509 | Wheel & Tire Assembly (Incl. Ref. #40) | 2 |

| Ref. No. | Part No. | Description | No. Used |
|----------|----------|--|----------|
| 40 | 27-6250 | Bushing - Wheel | 4 |
| 41 | 27-6231 | Bolt - Wheel | 2 |
| 42 | 40-1940 | Washer - Wheel Bolt | 4 |
| 43 | 66-0580 | Arm - Pivot | 2 |
| 44 | 52-3620 | Locknut | 4 |
| 45 | 32144-85 | Screw - Self Tapping | 1 |
| 46 | 76-1950 | Decal - Deck | 1 |
| 47 | 14-1739 | Housing Assembly (Incl. Ref. #4 & 50) | 1 |
| 48 | 76-2120 | Plate - Kicker Rt. Front | 1 |
| 49 | 71-0600 | Decal - Toro | 1 |
| 50 | 46-7370 | Decal - Step Pad | 1 |
| * | 77-0200 | Discharge Door Assembly (Incl. Ref. #10, 11, 13-17) | 1 |

*Not Illustrated



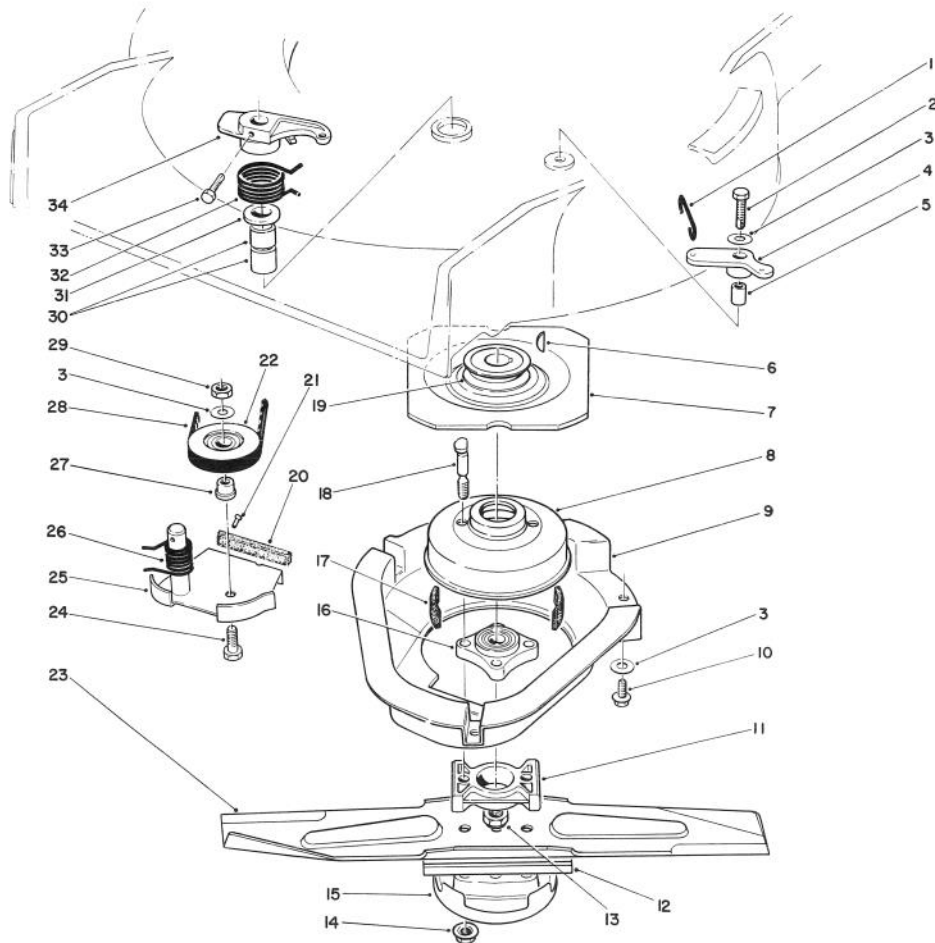
C-0400

ENGINE ASSEMBLY

| Ref. No. | Part No. | Description | No. Used |
|----------|----------|------------------------|----------|
| 1 | 72-4141 | Engine | 1 |
| 2 | 46-8290 | Plate - Toro | 1 |
| 3 | 66-0490 | Decal - Recoil | 1 |
| 4 | 56-6610 | Screw - Thread Forming | 2 |
| 5 | 57-3830 | Spacer - Tubular | 2 |
| 6 | 2412-95 | Clamp - Fuel Line | 4 |
| 7 | 51-3211 | Line - Fuel | 1 |

| Ref. No. | Part No. | Description | No. Used |
|----------|----------|------------------------|----------|
| 8 | 56-6360 | Filter - Fuel | 1 |
| 9 | 51-3214 | Line - Fuel | 1 |
| 10 | 62-3780 | Guide - Belt | 1 |
| 11 | 49-2040 | Screw - Thread Forming | 2 |
| 12 | 11-0590 | Screw - Thread Forming | 3 |
| * | 75-9850 | Tube - Oil Drain | 1 |

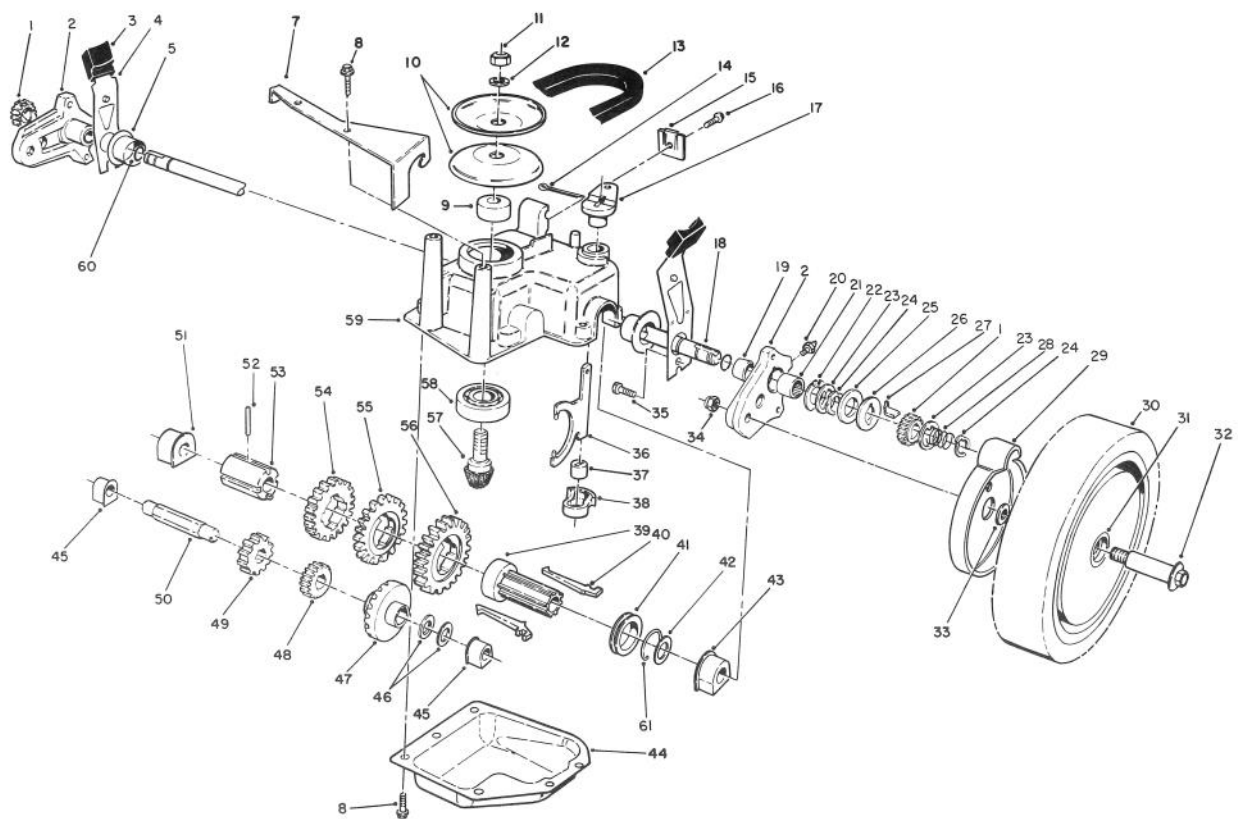
*Not Illustrated



C-0615

BLADE BRAKE CLUTCH ASSEMBLY

| Ref. No. | Part No. | Description | No. Used | Ref. No. | Part No. | Description | No. Used |
|----------|-----------|--|----------|----------|----------|--------------------------------------|----------|
| 1 | 49-2810 | Link - Control | 1 | 18 | 42-3190 | Bolt - Blade | 2 |
| 2 | 32104-107 | Screw - Self Tap Hex Hd. | 1 | 19 | 62-7560 | Pulley Driver | 1 |
| 3 | 3256-23 | Washer - Plain | 5 | 20 | | Pad - Brake | 1 |
| 4 | 49-7960 | Bell Crank | 1 | 21 | 3295-23 | Rivet - Semi Tubular | 2 |
| 5 | 49-7950 | Sleeve - Bell Crank | 1 | 22 | 46-5650 | Pulley Idler | 1 |
| 6 | 3257-17 | Key - Woodruff | 1 | 23 | 75-9420 | Blade - 21" | 1 |
| 7 | 56-6160 | Flywheel | 1 | 24 | 322-16 | Hex Hd. Capscrew | 1 |
| 8 | 56-6170 | Drum - Brake | 1 | 25 | 49-7920 | Brake Plate (Incl. Ref. #20 & 21) | 1 |
| 9 | 46-5690 | Shield | 1 | 26 | 46-5670 | Spring - Torsion Lower | 1 |
| 10 | 32144-70 | Screw - Thread Forming Hex Washer Hd. | 3 | 27 | 46-5630 | Hub - Idler Pulley | 1 |
| 11 | 62-4280 | Spacer - Blade | 1 | 28 | 42-0884 | V-Belt | 1 |
| 12 | 80-0510 | Stiffener - Blade | 1 | 29 | 3296-47 | Locknut | 1 |
| 13 | 3296-33 | Locknut | 1 | 30 | 68-9780 | Bearing | 2 |
| 14 | 54-9190 | Locknut | 2 | 31 | 70-1160 | Washer - P.M. | 1 |
| 15 | 80-2770 | Cup - Anti-Scalp | 1 | 32 | 49-7970 | Spring - Torsion Upper | 1 |
| 16 | 42-6890 | Hub Assembly | 1 | 33 | 32104-96 | Screw - Self Tap Hex Hd. | 1 |
| 17 | 52-3480 | Dampener - Vibration | 2 | 34 | 49-2820 | Lever | 1 |

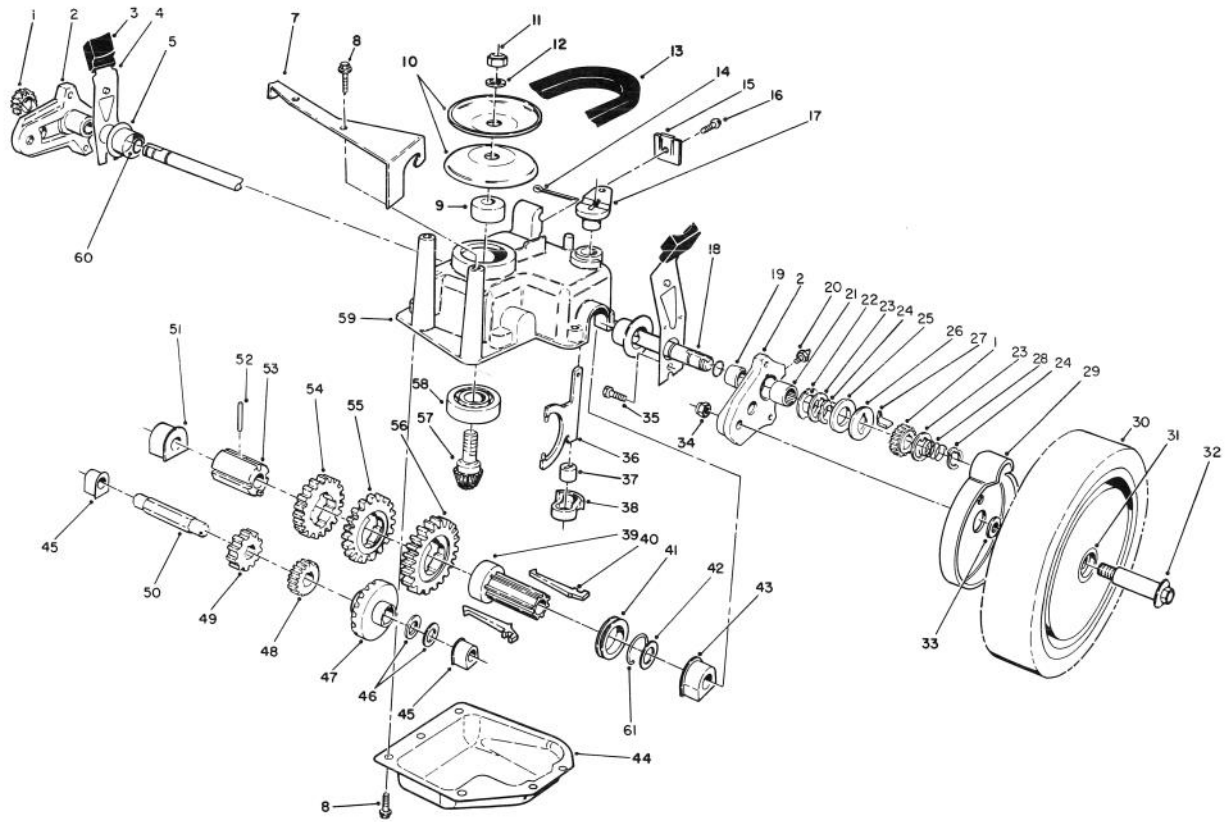


C-0521

GEAR CASE ASSEMBLY

| Ref. No. | Part No. | Description | No. Used | Ref. No. | Part No. | Description | No. Used |
|----------|----------|---|----------|----------|----------|---|----------|
| 1 | 65-4750 | Pinion | 2 | 24 | 65-2720 | Ring - Retaining | 4 |
| 2 | 63-8701 | Pivot Arm Assembly (Incl. Ref # 19, 20, & 21) | 2 | 25 | 65-4710 | Ring - Friction | 2 |
| 3 | 25-7740 | Knob - Arm | 2 | 26 | 65-4760 | Washer - Clutch | 2 |
| 4 | 63-8720 | Spring Arm Assembly | 2 | 27 | 66-6050 | Key - Rocker L.H. | 1 |
| 5 | 42-3520 | End Cap | 2 | * | 66-6040 | Key - Rocker R.H. | 1 |
| 7 | 62-4320 | Bracket - Belt Guide | 1 | 28 | 65-4720 | Spring | 2 |
| 8 | 49-2040 | Screw - Self Tapping | 8 | 29 | 74-1660 | Cover - Wheel | 2 |
| 9 | 62-6660 | Spacer | 1 | 30 | 11-9519 | Wheel - Tire & Gear Ass'y (Incl. Ref. # 31) | 2 |
| 10 | 60-8840 | Pulley - Half | 2 | 31 | 27-6250 | Bushing - Wheel | 4 |
| 11 | 3296-5 | Locknut | 1 | 32 | 27-6231 | Wheel Bolt | 2 |
| 12 | 3256-24 | Washer - Flat | 1 | 33 | 74-1670 | Spacer - Wheel Cover | 2 |
| 13 | 62-3900 | V-Belt | 1 | 34 | 52-3620 | Locknut | 2 |
| 14 | 3272-10 | Pin - Cotter | 1 | 35 | 32144-85 | Screw | 2 |
| 15 | 46-5610 | Cable Clamp | 1 | 36 | 60-8870 | Yoke - Shift | 1 |
| 16 | 32144-70 | Screw - Thread Forming | 1 | 37 | 29-9570 | Bushing - Yoke | 1 |
| 17 | 60-8820 | Lever - Shift | 1 | 38 | 60-8810 | Retainer - Shift Fork | 1 |
| 18 | 65-4770 | Shaft - Output | 1 | 39 | 76-0780 | Sleeve - Shift Key | 1 |
| 19 | 70-9760 | Bushing | 2 | 40 | 76-0760 | Key - Shift | 2 |
| 20 | 302-56 | Fitting - Grease | 2 | 41 | 76-0770 | Collar - Shift | 1 |
| 21 | 48-2060 | Needle Bearing | 2 | 42 | 36-4780 | Washer - Thrust | 1 |
| 22 | 65-4730 | Thrust Washer | 2 | 43 | 60-8770 | Bushing - Output Shaft | 1 |
| 23 | 65-4740 | Thrust Washer | 4 | 44 | 60-8730 | Cover - Gear Case | 1 |

*Not Illustrated

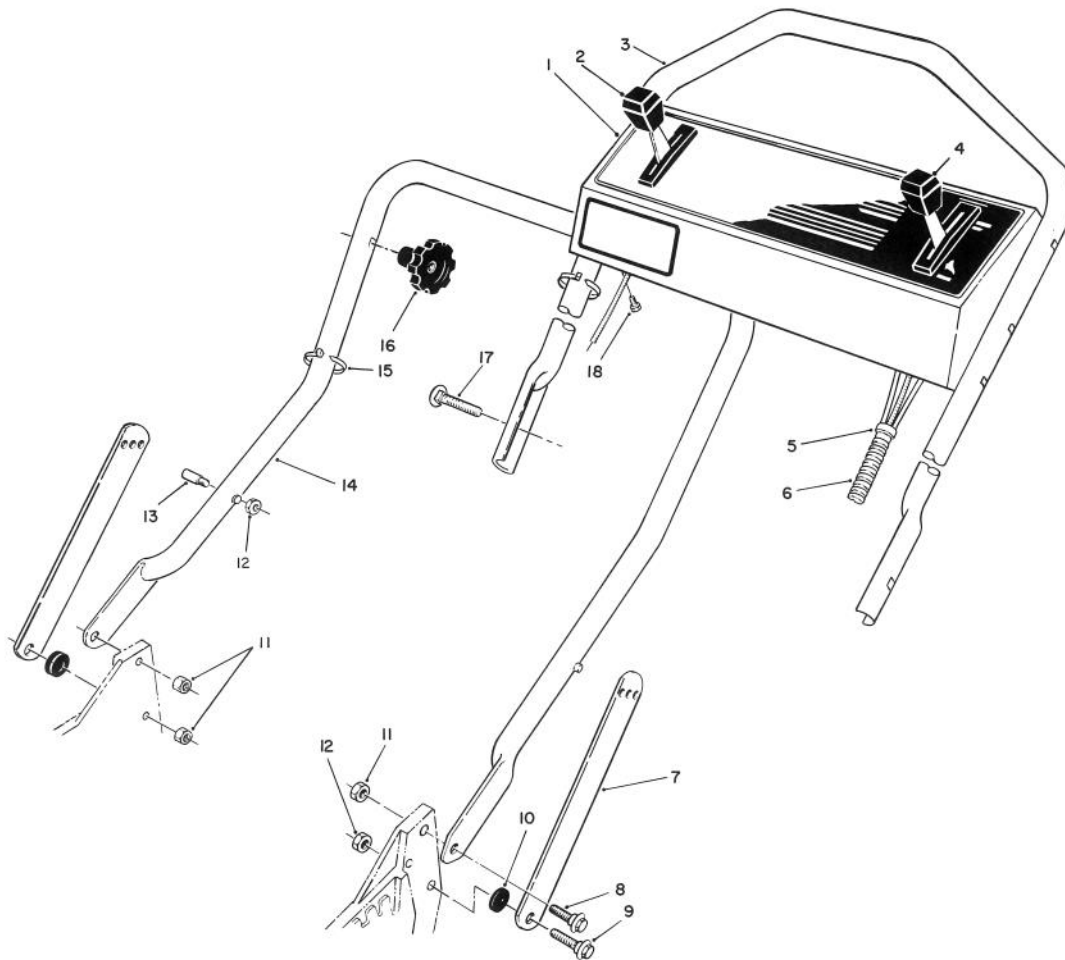


C-0521

GEAR CASE ASSEMBLY (CONTINUED)

| Ref. No. | Part No. | Description | No. Used | Ref. No. | Part No. | Description | No. Used |
|----------|-----------|------------------------|----------|----------|----------|--------------------------|----------|
| 45 | 60-8750 | Bushing - Int. Shaft | 2 | 54 | 55-3810 | Gear - 39 Tooth 3rd Gear | 1 |
| 46 | 36-4791 | Washer - Thrust | 2 | 55 | 55-3790 | Gear - 44 Tooth 2nd Gear | 1 |
| 47 | 55-3760 | Gear - Pinion 15 Tooth | 1 | 56 | 55-3770 | Gear - 49 Tooth 1st Gear | 1 |
| 48 | 55-3780 | Gear - Pinion 20 Tooth | 1 | 57 | 60-8890 | Pinion - Bevel | 1 |
| 49 | 55-3800 | Gear - Pinion | 1 | 58 | 38-7820 | Bearing - Ball | 1 |
| 50 | 60-8800 | Shaft - Intermediate | 1 | 59 | 60-8710 | Gear Case - Upper | 1 |
| 51 | 60-8850 | Bushing - Output Shaft | 1 | 60 | 237-153 | O-Ring | 2 |
| 52 | 32121-120 | Pin - Coil | 1 | 61 | 65-5250 | Clip - Spring | 1 |
| 53 | 60-8790 | Sleeve - Gear | 1 | * | 62-6673 | Gear Case Assembly | 1 |

*Not Illustrated



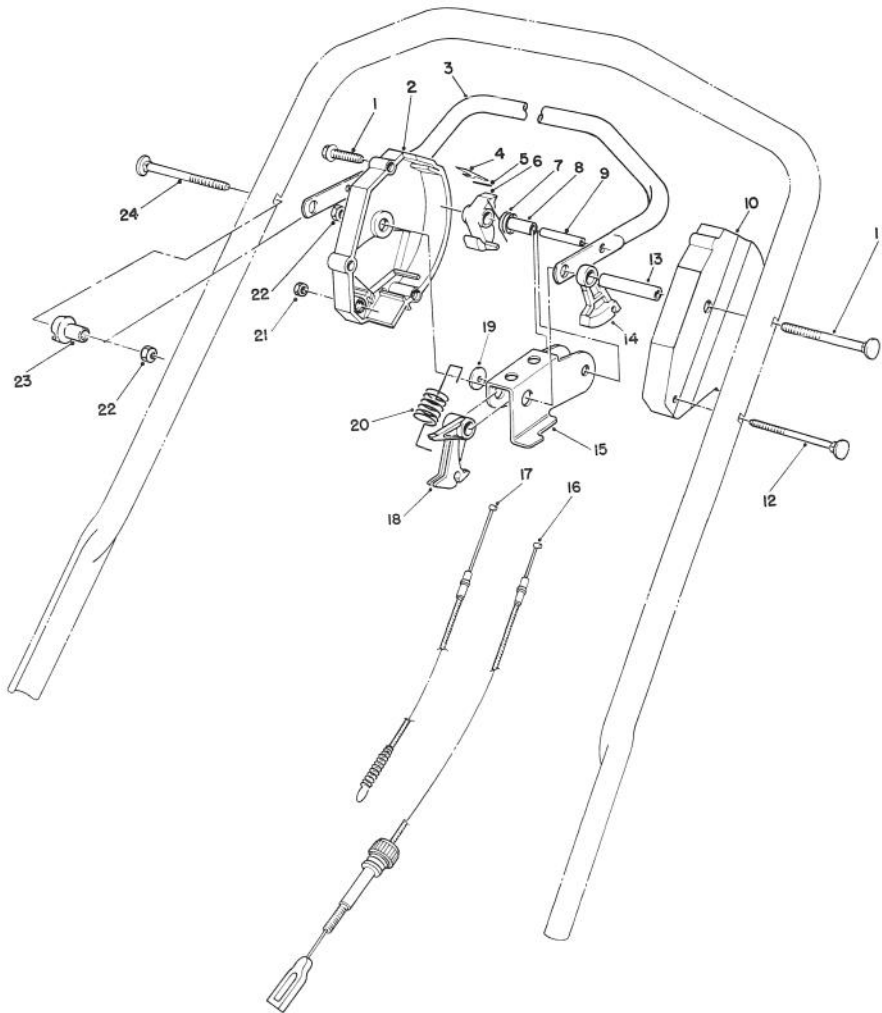
C-0406

HANDLE ASSEMBLY

| Ref. No. | Part No. | Description | No. Used |
|----------|----------|--|----------|
| 1 | 70-7070 | Panel - Control | 1 |
| 2 | 76-2720 | Control - Ground Speed (Bend Type # 1) (Sheath Lg. 42 1/4") (Wire Lg. 2 3/8") | 1 |
| 3 | 46-5411 | Handle - Upper | 1 |
| 4 | 49-4186 | Control - Throttle (Bend Type # 5) (Sheath Lg. 55 7/8") (Wire Lg. 2 3/8") | 1 |
| 5 | 2412-50 | Clip - Convoluted Tubing | 4 |
| 6 | 46-6440 | Cover - Control Cables | 1 |

| Ref. No. | Part No. | Description | No. Used |
|----------|----------|------------------------------|----------|
| 7 | 43-1370 | Latch - Handle | 2 |
| 8 | 27-7210 | Screw - Shoulder | 2 |
| 9 | 27-7211 | Screw - Shoulder | 2 |
| 10 | 3-3287 | Spacer - Handle Latch | 2 |
| 11 | 3296-29 | Locknut | 3 |
| 12 | 3296-47 | Locknut | 3 |
| †13 | 49-2750 | Pin - Handle | 2 |
| 14 | 43-1361 | Lower Handle Assembly | 1 |
| 15 | 3290-378 | Cable Tie | 2 |
| 16 | 19-4050 | Knob - Handle Release | 2 |
| 17 | 17-9421 | Screw - Handle | 2 |
| 18 | 32104-76 | Screw - Self Tapping Slotted | 4 |

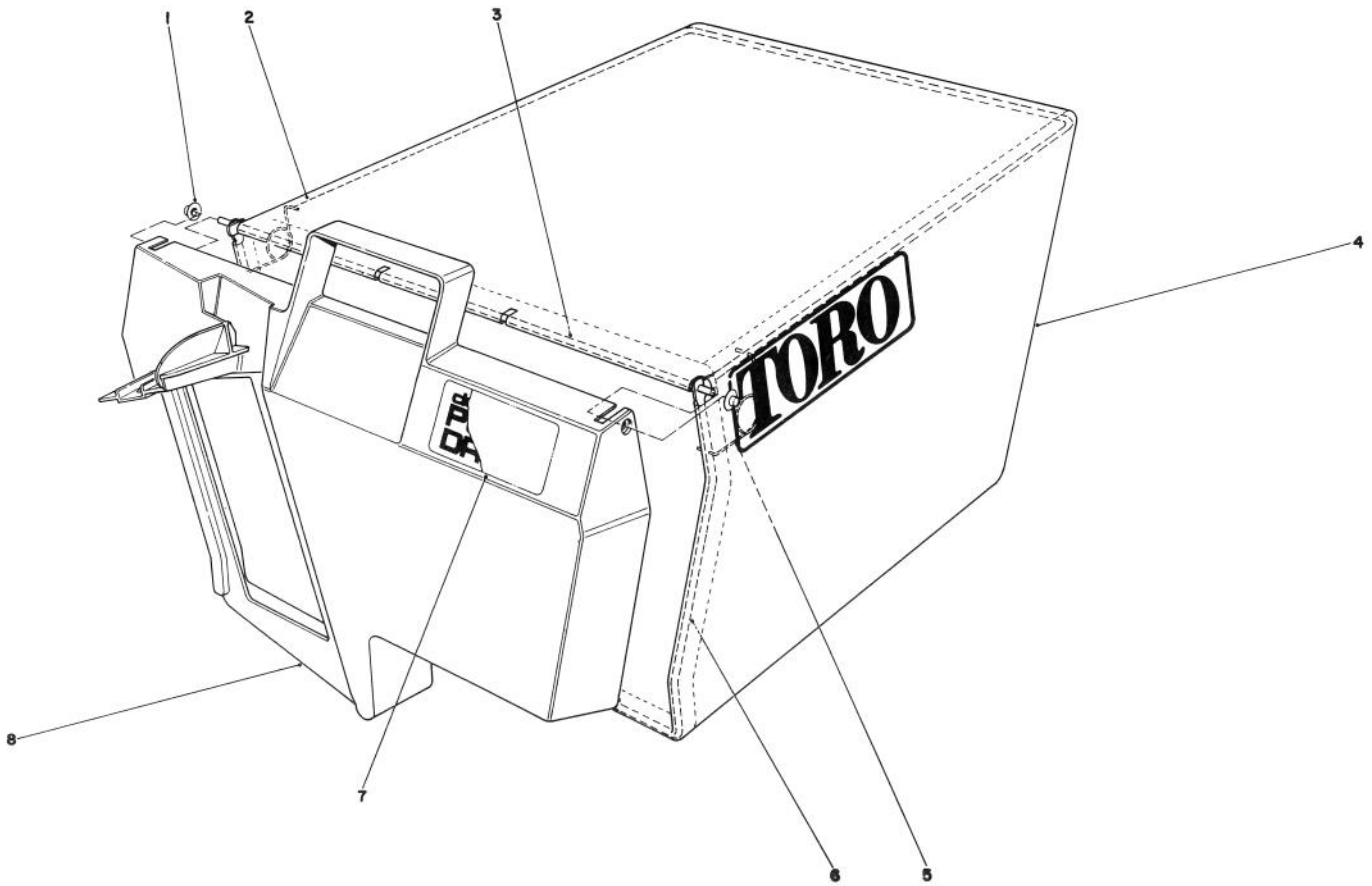
†Service Replacement Part



C-0341

TRACTION CONTROL ASSEMBLY

| Ref. No. | Part No. | Description | No. Used | Ref. No. | Part No. | Description | No. Used |
|----------|----------|---|----------|----------|----------|------------------|----------|
| 1 | 46-7040 | Screw - Thread Forming Hex Washer Hd. | 3 | 12 | 46-6431 | Screw - Handle | 1 |
| 2 | 12-3429 | Housing - Control R.H. (Incl Ref. # 4 & 5) | 1 | 13 | 46-5590 | Spacer | 1 |
| 3 | 52-7430 | Control Bar Assembly | 1 | 14 | 46-5520 | Lever - Traction | 1 |
| 4 | 52-7410 | Spring - Leaf | 1 | 15 | 66-0180 | Rocker | 1 |
| 5 | 57-6290 | Pin - Insert | 1 | 16 | 46-5480 | Cable - Traction | 1 |
| 6 | 46-5530 | Hook - Control | 1 | 17 | 12-5999 | Cable - Clutch | 1 |
| 7 | 46-5510 | Spring - Torsion | 1 | 18 | 46-5540 | Lever - Cable | 1 |
| 8 | 46-5550 | Bushing - P.M. | 1 | 19 | 66-0170 | Washer - Nylon | 1 |
| 9 | 32121-9 | Pin - Coil | 1 | 20 | 66-0190 | Spring - Detent | 1 |
| 10 | 46-5460 | Housing - Control L.H. | 1 | 21 | 3296-8 | Locknut | 1 |
| 11 | 17-9422 | Screw - Handle | 1 | 22 | 3296-58 | Locknut | 2 |
| | | | | 23 | 49-1630 | Support - Spacer | 1 |
| | | | | 24 | 17-9421 | Screw - Handle | 1 |

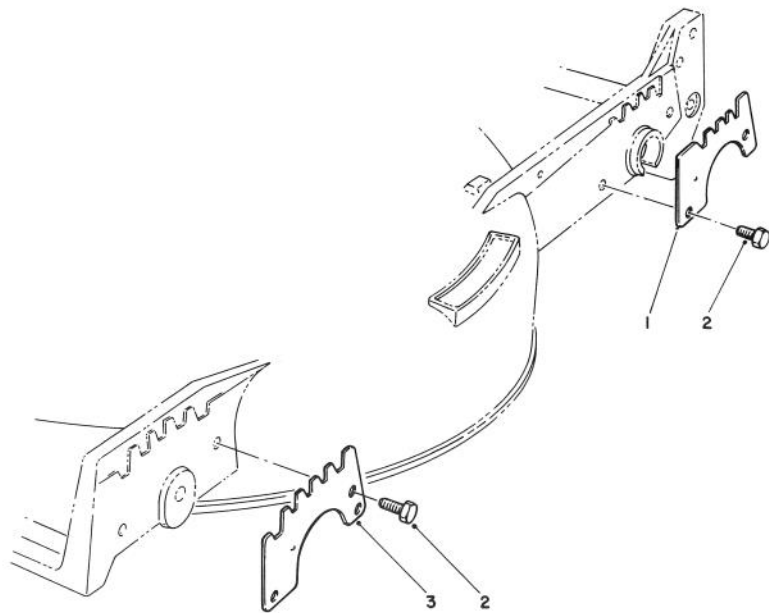


C-0331

GRASS BAG ASSEMBLY NO. 11-0189

| Ref. No. | Part No. | Description | No. Used |
|----------|----------|-------------------|----------|
| 1 | 3290-422 | Nut - Push | 2 |
| 2 | 42-4030 | Bag Frame - Upper | 1 |
| 3 | 33-4820 | Hinge - Bag Door | 1 |
| 4 | 44-0522 | Bag - Grass | 1 |

| Ref. No. | Part No. | Description | No. Used |
|----------|----------|------------------|----------|
| 5 | 36-6910 | Spring | 2 |
| 6 | 42-4020 | Frame - Bag | 1 |
| 7 | 66-2150 | Decal - Bag Door | 1 |
| 8 | 37-1393 | Door - Grass Bag | 1 |

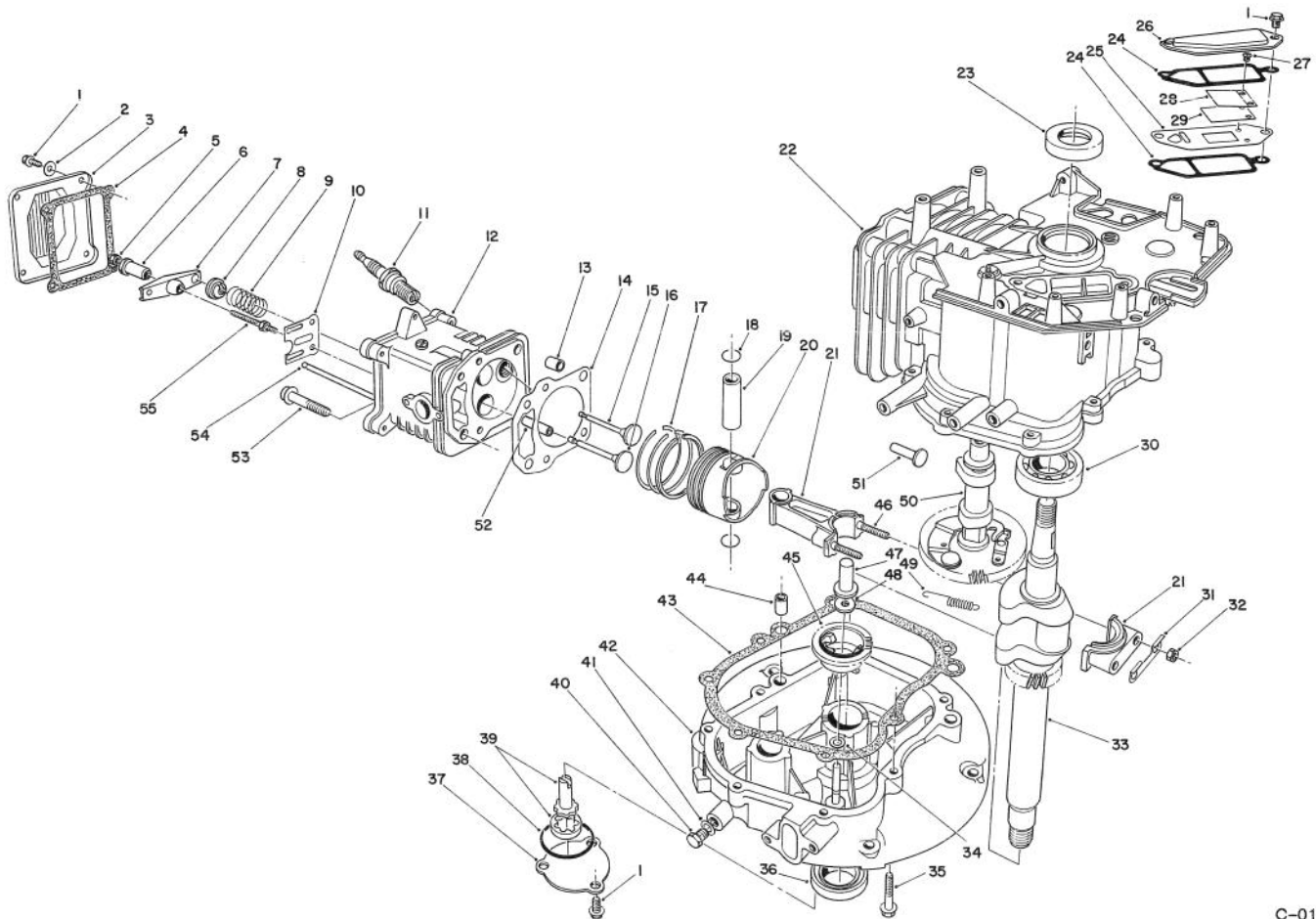


C-0332

WEAR PLATE MODEL NO. 49-4080 (OPTIONAL)

| Ref. No. | Part No. | Description | No. Used |
|----------|----------|----------------------|----------|
| 1 | 49-4070 | Plate - Rear Wear | 2 |
| 2 | 32104-17 | Thread Forming Screw | 8 |

| Ref. No. | Part No. | Description | No. Used |
|----------|----------|--------------------|----------|
| 3 | 43-5050 | Plate - Wear Front | 2 |



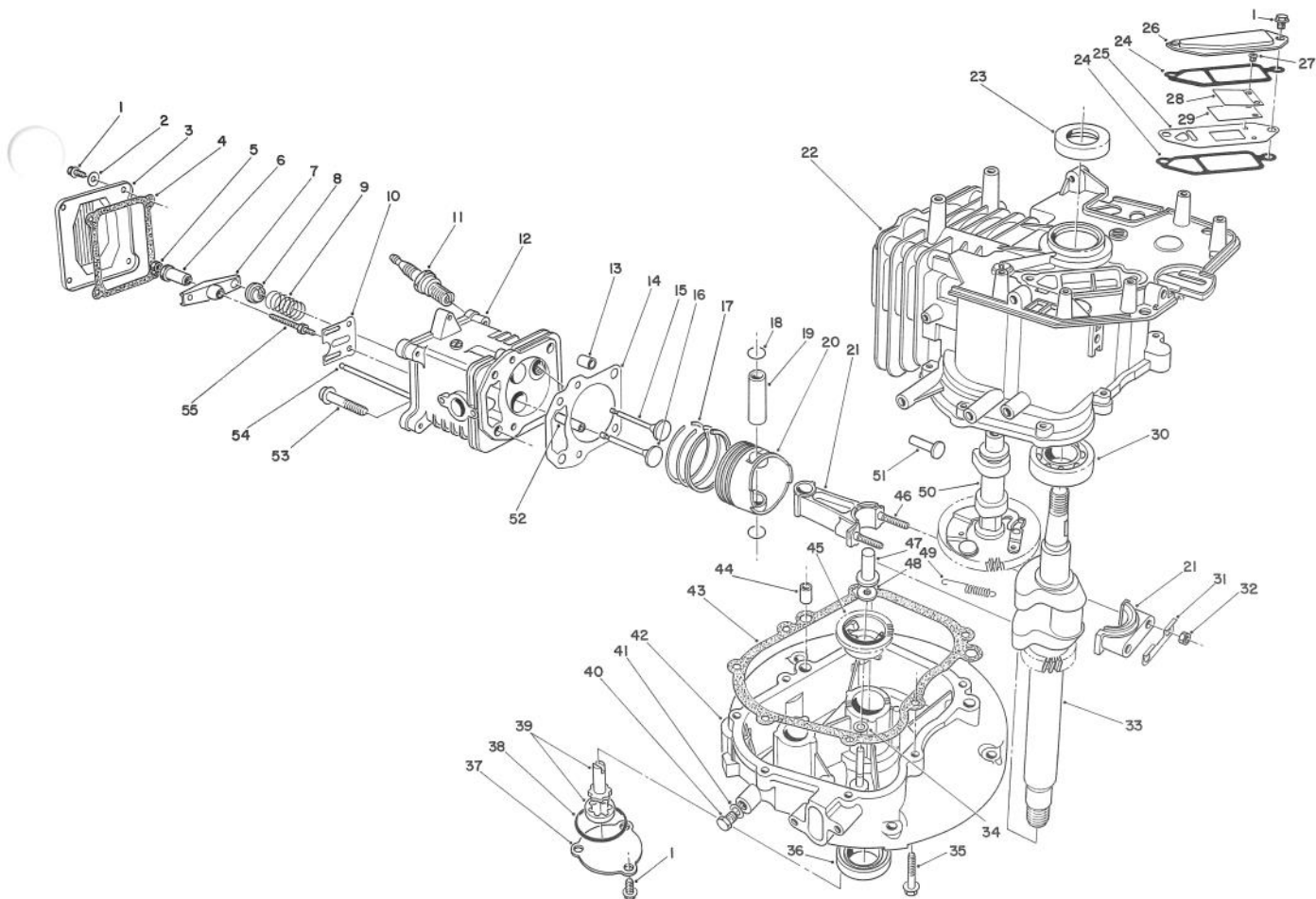
C-0157

ENGINE ASSEMBLY (MODEL NO. VML0-2)

| Ref. No. | Part No. | Description | No. Used |
|----------|----------|---|----------|
| 1 | 81-1170 | Bolt - Self Tapping | 9 |
| 2 | 81-3790 | Washer - Flat | 4 |
| 3 | 81-3780 | Cover - Rocker Arm | 1 |
| 4 | 81-3770 | Gasket - Rocker Arm Cover | 1 |
| 5 | 81-3760 | Nut - Jam | 2 |
| 6 | 81-3750 | Pivot - Rocker Arm | 2 |
| 7 | 81-3740 | Arm - Rocker | 2 |
| 8 | 81-3730 | Retainer - Valve Spring | 2 |
| 9 | 81-3720 | Spring - Valve | 2 |
| 10 | 81-3710 | Guide - Push Rod | 1 |
| 11 | 81-3250 | Spark Plug NGKBPR6ES | 1 |
| 12 | 81-5540 | Head - Cylinder Ass'y (Incl. Ref. #52) | 1 |
| 13 | 81-3690 | Pin - Dowel | 2 |
| 14 | 81-4710 | Gasket - Cylinder Head | 1 |
| * | 81-3820 | Gasket Set | A/R |
| 15 | 81-3660 | Valve - Exhaust | 1 |
| 16 | 81-3670 | Valve - Intake | 1 |
| 17 | 81-3650 | Ring Set | 1 |
| 18 | 50-0960 | Circlip | 2 |
| 19 | 81-3630 | Pin - Piston | 1 |
| 20 | 81-3620 | Piston | 1 |

| Ref. No. | Part No. | Description | No. Used |
|----------|----------|--|----------|
| 21 | 81-3390 | Connection Rod Ass'y (Incl. Ref. #31, 32, 46) | 1 |
| 22 | 81-3280 | Block - Engine (Incl. Ref. #23 & 30) | 1 |
| 23 | 81-3290 | Seal - Upper Crankshaft | 1 |
| 24 | 81-3300 | Gasket - Breather | 2 |
| 25 | | Plate - Breather | 1 |
| 26 | 81-3320 | Cover - Breather | 1 |
| 27 | | Screw - Reed Valve | 2 |
| 28 | | Retainer - Reed Valve | 1 |
| 29 | | Valve - Reed | 1 |
| * | 81-3370 | Reed Valve Assembly (Incl. Ref. #25, & 27-29) | 1 |
| 30 | 81-3380 | Ball Bearing | 1 |
| 31 | 81-3400 | Plate - Lock | 1 |
| 32 | 50-0510 | Nut | 2 |
| 33 | 81-3430 | Crankshaft | 1 |
| 34 | 81-3440 | Washer | 1 |
| 35 | 81-3450 | Bolt | 7 |
| 36 | 81-3460 | Seal - Lower Crankshaft | 1 |
| 37 | 81-3470 | Cover - Oil Pump | 1 |

*Not Illustrated
12

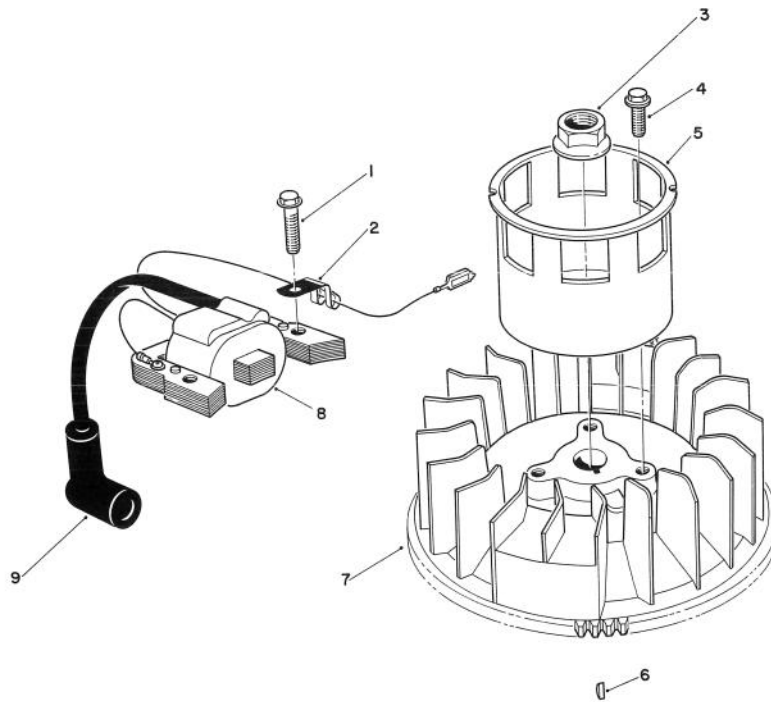


C-0157

ENGINE ASSEMBLY (CONTINUED) (MODEL NO. VML0-2)

| Ref. No. | Part No. | Description | No. Used | Ref. No. | Part No. | Description | No. Used |
|----------|----------|--------------------------|----------|----------|----------|------------------------------------|----------|
| 38 | 81-3480 | O-Ring | 1 | 49 | 81-3580 | Spring - Compression Release | 1 |
| 39 | 81-3490 | Oil Pump Assembly | 1 | 50 | 81-5550 | Camshaft Assembly (Incl. Ref. #49) | 1 |
| 40 | 81-4970 | Plug - Oil Drain | 1 | 51 | 81-3600 | Tappet | 2 |
| 41 | 81-3510 | Gasket - Drain Plug | 1 | 52 | 81-3830 | Guide - Valve | 2 |
| 42 | 81-3520 | Crankcase - Lower | 1 | 53 | 50-0190 | Bolt | 4 |
| 43 | 81-3530 | Gasket - Crankcase | 1 | 54 | 81-3810 | Rod - Push | 2 |
| 44 | 50-0450 | Pin - Dowel | 2 | 55 | 81-3800 | Stud - Rocker Arm | 2 |
| 45 | 81-3550 | Governor Flyweight Ass'y | 1 | * | 13-5939 | Short Block Assembly | 1 |
| 46 | 81-3610 | Stud - Connection Rod | 2 | * | 75-9850 | Tube - Oil Drain | 1 |
| 47 | 81-3560 | Plunger - Governor | 1 | | | | |
| 48 | 81-3570 | Washer | 1 | | | | |

*Not Illustrated

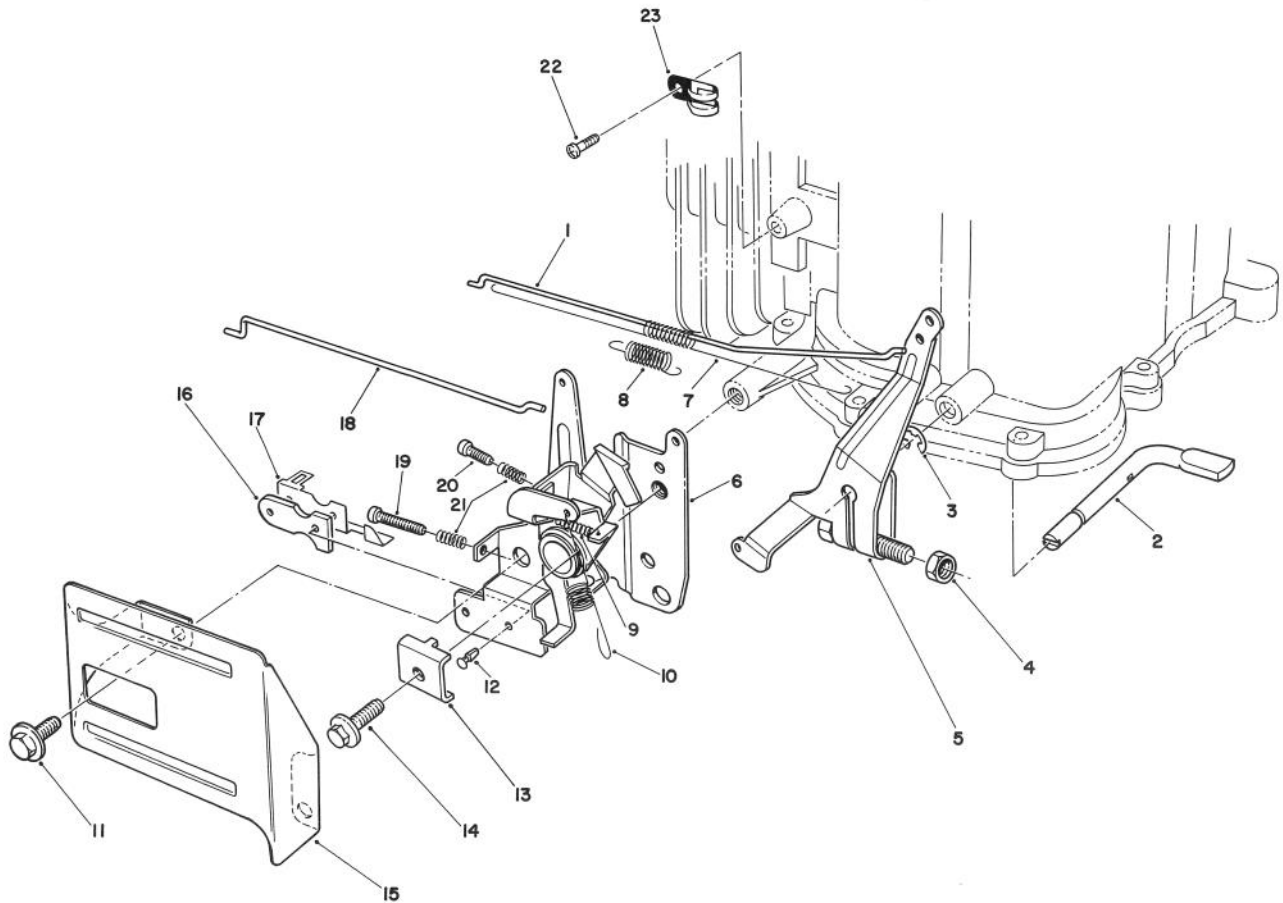


C-0305

MAGNETO & FLYWHEEL ASSEMBLY (MODEL VML0-2)

| Ref. No. | Part No. | Description | No. Used |
|----------|----------|---------------|----------|
| 1 | 53-0860 | Bolt | 2 |
| 2 | 81-1480 | Clamp | 1 |
| 3 | 81-3890 | Nut | 1 |
| 4 | 81-1300 | Bolt | 3 |
| 5 | 81-3910 | Cup - Starter | 1 |

| Ref. No. | Part No. | Description | No. Used |
|----------|----------|---|----------|
| 6 | 81-3930 | Key - Flywheel | 1 |
| 7 | 81-3920 | Flywheel | 1 |
| 8 | 81-5580 | Coil Assembly - Magneto (Incl. Ref. # 9) | 1 |
| 9 | 81-3860 | Cover - Spark Plug | 1 |

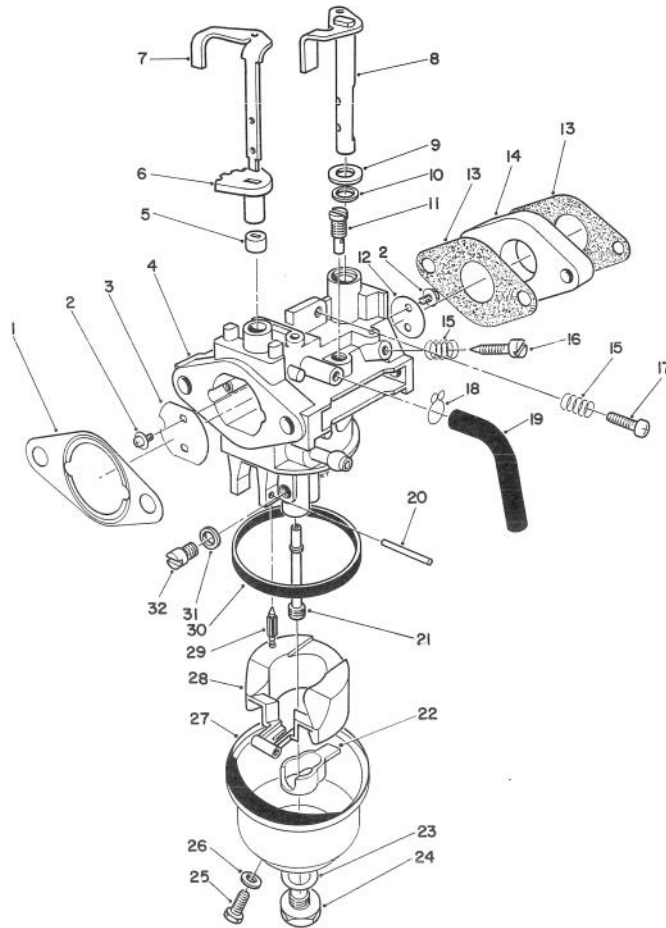


C-0407

GOVERNOR ASSEMBLY (MODEL NO. VML0-2)

| Ref. No. | Part No. | Description | No. Used |
|----------|----------|--------------------------|----------|
| 1 | 81-4450 | Rod - Carburetor | 1 |
| 2 | 81-4480 | Shaft - Governor | 1 |
| 3 | 81-4540 | E-Ring | 1 |
| 4 | 81-3760 | Nut | 1 |
| 5 | 81-4500 | Governor Arm Assembly | 1 |
| 6 | 81-4510 | Throttle & Choke Control | 1 |
| 7 | 81-4470 | Spring - Carburetor Rod | 1 |
| 8 | 81-4460 | Spring - Choke Lever | 1 |
| 9 | 81-4570 | Spring | 1 |
| 10 | 81-4520 | Spring - Governor | 1 |
| 11 | 81-1170 | Bolt | 2 |
| 12 | 81-4530 | Rivet | 2 |

| Ref. No. | Part No. | Description | No. Used |
|----------|----------|-------------------------|----------|
| 13 | 81-1690 | Clamp - Cable | 1 |
| 14 | 50-0130 | Bolt | 1 |
| 15 | 57-5750 | Guard - Throttle | 1 |
| 16 | 81-1830 | Insulator - Kill Switch | 1 |
| 17 | 81-1840 | Terminal - Switch | 1 |
| 18 | 81-4440 | Rod - Choke | 1 |
| 19 | 81-4560 | Screw | 1 |
| 20 | 81-4550 | Screw | 1 |
| 21 | 81-2900 | Spring | 2 |
| 22 | 81-0380 | Screw | 1 |
| 23 | 81-4780 | Clamp | 1 |

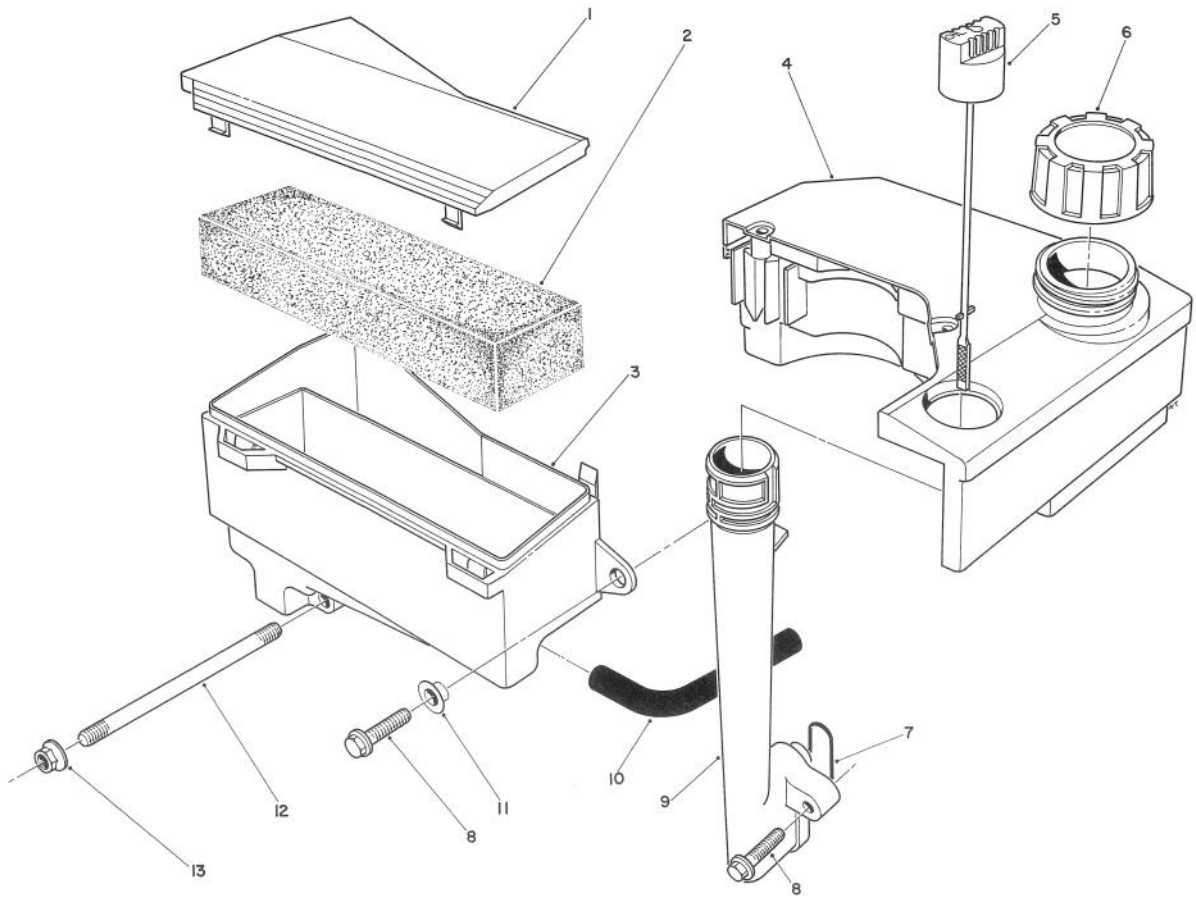


C-0160

CARBURETOR ASSEMBLY (MODEL NO. VML0-2)

| Ref. No. | Part No. | Description | No. Used | Ref. No. | Part No. | Description | No. Used |
|----------|----------|------------------------|----------|----------|----------|---|----------|
| 1 | 81-4250 | Gasket - Air Cleaner | 1 | 22 | 81-4940 | Spacer - Float | 1 |
| 2 | 81-2710 | Screw - Choke Valve | 4 | 23 | 81-2650 | Gasket - Bowl Screw | 1 |
| 3 | 81-2720 | Valve - Choke | 1 | 24 | 81-2660 | Screw - Bowl | 1 |
| 4 | | Body - Carburetor | 1 | 25 | 81-2670 | Screw - Drain | 1 |
| 5 | 81-5530 | Ring - Lower Choke | 1 | 26 | 81-2680 | Gasket - Drain Screw | 1 |
| 6 | 81-5520 | Ring - Upper Choke | 1 | 27 | 81-4340 | Bowl - Float | 1 |
| 7 | 81-5510 | Shaft - Choke Valve | 1 | 28 | 81-4920 | Float | 1 |
| 8 | 81-2920 | Shaft - Throttle Valve | 1 | 29 | 81-4700 | Needle | 1 |
| 9 | 81-4280 | Washer | 1 | 30 | 81-2630 | Gasket - Float Bowl | 1 |
| 10 | 81-4290 | Seal - Throttle Shaft | 1 | 31 | 81-4350 | Spacer | 1 |
| 11 | 81-5620 | Jet - Pilot (#38.8) | 1 | 32 | 81-2340 | Main Jet (#72.5) | 1 |
| 12 | 81-2940 | Valve - Throttle | 1 | * | 81-5610 | Main Jet (#70) (For high alt.) | 1 |
| 13 | 81-5560 | Gasket - Carburetor | 2 | * | 81-4270 | Shaft - Choke Assembly (Incl. Ref. # 5, 28, & 29) | 1 |
| 14 | 81-5570 | Block - Insulator | 1 | * | 81-5590 | Carburetor Assembly (Incl. Ref. # 2-33) | 1 |
| 15 | 81-2580 | Spring | 2 | * | 81-5650 | Carburetor Repair Kit (Incl. Ref. #1, 13, 23, 26, 29, & 30) | 1 |
| 16 | 50-2360 | Screw - Pilot | 1 | | | | |
| 17 | 50-0250 | Screw - Idler Stop | 1 | | | | |
| 18 | 81-4300 | Clamp | 1 | | | | |
| 19 | 81-4310 | Tube - Bowl Vent | 1 | | | | |
| 20 | 81-5600 | Pin - Hinge | 1 | | | | |
| 21 | 81-5630 | Nozzle - Main | 1 | | | | |

*Not Illustrated
16



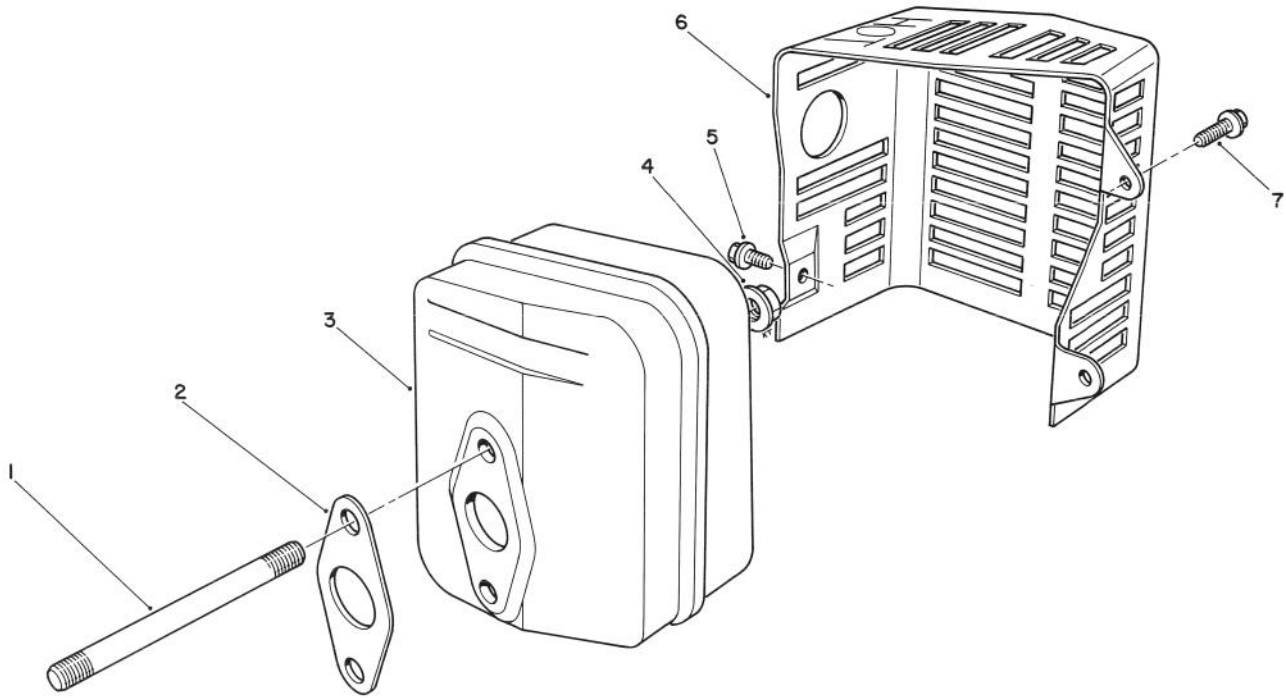
C-0161

AIR CLEANER & FUEL TANK ASSEMBLY (MODEL NO. VML0-2)

| Ref. No. | Part No. | Description | No. Used |
|----------|----------|---------------------|----------|
| 1 | 81-4110 | Cover - Air Cleaner | 1 |
| 2 | 81-4120 | Filter - Foam | 1 |
| 3 | | Body - Air Cleaner | 1 |
| 4 | 55-3530 | Fuel Tank | 1 |
| 5 | 81-4140 | Dipstick - Oil | 1 |
| 6 | 55-3570 | Gas Cap | 1 |
| 7 | 81-4150 | O-Ring - Oil Tube | 1 |
| 8 | 81-4160 | Bolt | 3 |

| Ref. No. | Part No. | Description | No. Used |
|----------|----------|--|----------|
| 9 | 81-4170 | Tube - Oil Fill | 1 |
| 10 | 81-4180 | Hose Crankcase Breather | 1 |
| 11 | 81-4200 | Spacer | 1 |
| 12 | 81-4220 | Stud - Carburetor | 2 |
| 13 | 50-7180 | Nut | 2 |
| * | 81-4240 | Air Cleaner Assembly (Incl. Ref. # 1 & 3) | 1 |

*Not Illustrated



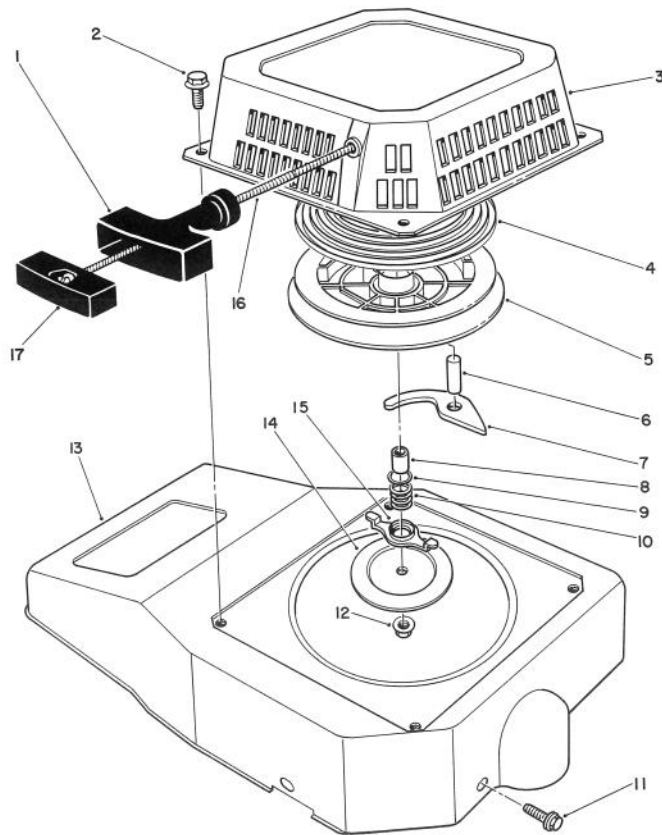
T-0726

MUFFLER ASSEMBLY (MODEL NO. VML0-2)

| Ref. No. | Part No. | Description | No. Used |
|----------|----------|------------------|----------|
| 1 | 81-4380 | Stud - Muffler | 2 |
| 2 | 81-4390 | Gasket - Muffler | 1 |
| 3 | 81-4400 | Muffler | 1 |
| 4 | 50-0530 | Nut | 2 |
| 5 | 81-4420 | Screw | 1 |

| Ref. No. | Part No. | Description | No. Used |
|----------|----------|--|----------|
| 6 | 81-4430 | Cover - Muffler | 1 |
| 7 | 81-1170 | Bolt | 2 |
| * | 56-6730 | Spark Arrestor Kit (Incl. Ref. # 2) (Optional) | 1 |

*Not Illustrated
18



C-0162

RECOIL ASSEMBLY (MODEL NO. VML0-2)

| Ref. No. | Part No. | Description | No. Used | Ref. No. | Part No. | Description | No. Used |
|----------|----------|--------------------|----------|----------|----------|---|----------|
| 1 | 81-4000 | Handle | 1 | 11 | 81-1170 | Bolt | 3 |
| 2 | 81-1280 | Bolt | 4 | 12 | 81-4100 | Locknut | 1 |
| 3 | 81-3970 | Case - Recoil | 1 | 13 | 81-3960 | Shroud - Blower | 1 |
| 4 | 81-4010 | Spring - Recoil | 1 | 14 | 81-4090 | Plate - Friction | 1 |
| 5 | 81-4020 | Reel - Rope Pulley | 1 | 15 | 81-4080 | Guide - Pawl | 1 |
| 6 | 81-4030 | Pin | 1 | 16 | 81-1270 | Rope - Recoil | 1 |
| 7 | 81-4040 | Pawl | 1 | 17 | 81-4960 | Retainer - Rope Handle | 1 |
| 8 | 81-4050 | Spacer | 1 | * | 81-3270 | Recoil Starter Assembly (Incl. Ref. # 1, 3-10, 12, & 14-17) | 1 |
| 9 | 81-4060 | Washer | 1 | | | | |
| 10 | 81-4070 | Spring - Friction | 1 | | | | |

*Not Illustrated
AL-902309

Litho U.S.A.

