



Deck Belt Service Kit

For LX460 Tractors

Model No. 112-5881

Installation Instructions

Installation

Loose Parts

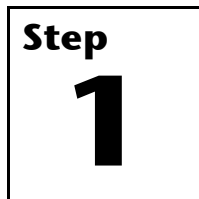
Use the chart below to verify that all parts have been shipped.

Step	Description	Qty.	Use
3	Belt	1	Replace the upper deck belt.
5	Lower PTO lever Flange locknut	1 2	Install the new lower PTO lever.

Important: Read and understand these instructions before performing the procedures described. If you are not a trained and experienced service and repair technician, contact an Authorized Service Dealer.

Note: Save these instructions and refer to them when ordering replacement parts.

Note: Determine the left and right sides of the machine from the operating position.



Preparing for Service

No Parts Required

Procedure

1. Move the tractor to level ground.
2. Shut off the engine, wait for all moving parts to stop, and remove the ignition key.
3. Set the parking brake.
4. Lower the mower deck to the lowest position.
5. Ensure that the PTO lever is in the disengaged (Off) position.
6. Allow the muffler and engine to cool.



Removing the Deck

No Parts Required

Procedure

Important: Retain all hardware or parts removed unless stated otherwise.

1. Use a 1/2-inch socket and ratchet to loosen the nut that secures the left side of the engine pulley belt guide to allow the belt to clear the guide (Figure 1).

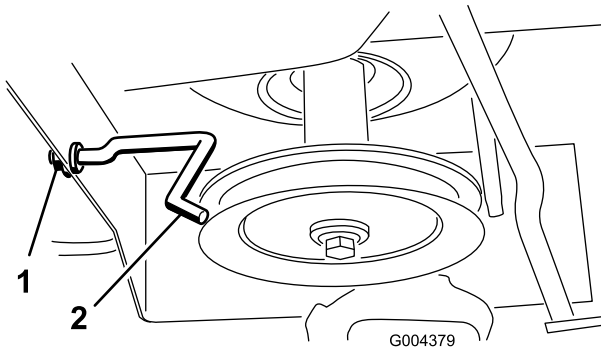


Figure 1

- 1. Belt guide nut
- 2. Engine pulley belt guide

2. Use a 1/4-inch socket and ratchet to remove the engine pulley belt guide.

Note: Note in which hole the belt guide mounts for re-installation later.

3. Remove the belt from the engine pulley.
4. Remove and discard the cotter pin and flat washer that secure the loop end of the deck engagement cable to the lower PTO lever (Figure 2).

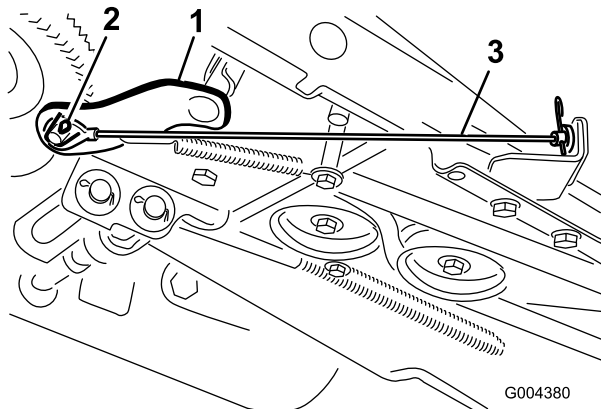


Figure 2

- 1. Lower PTO lever
- 2. Loop end of the cable
- 3. Deck engagement cable

5. Slip the cable end off the PTO lever stud.
6. From the right side of the unit, locate the other end of the deck engagement cable on the cross brace at the back of the deck (Figure 3).

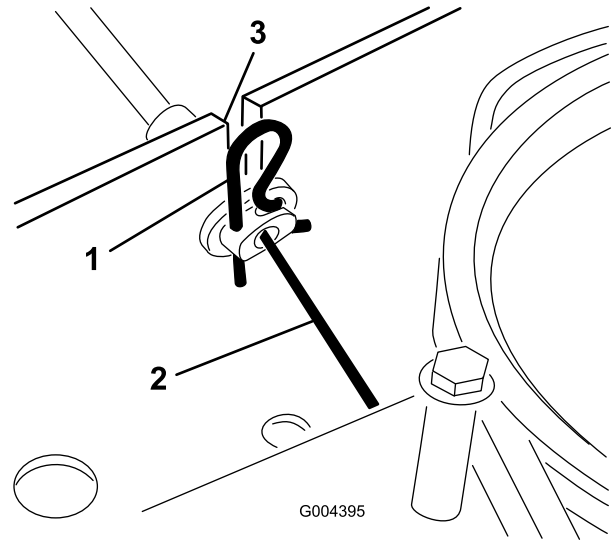


Figure 3

- 1. Hairpin clip
- 2. Deck engagement cable
- 3. Cross brace slot

7. At the cable end, remove the hairpin clip, pull back on the cable housing until the metal portion of the cable is in the cross brace slot, and lift the cable out of the slot (Figure 3).

Note: The straight leg of the hairpin clip goes through a hole in the fitting end of the cable.

8. Unhook the deck engagement cable spring from the right hand idler bracket on the deck (Figure 4).

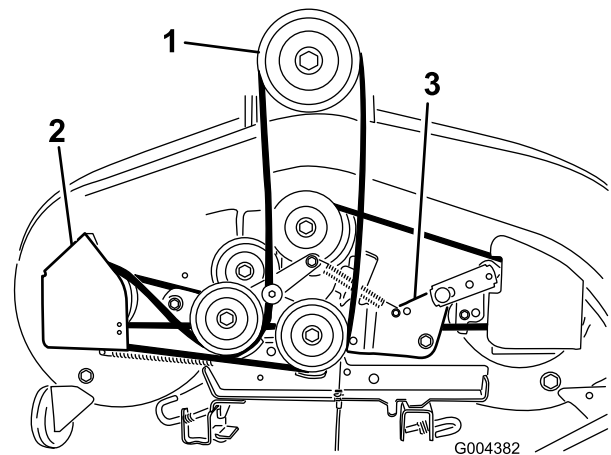


Figure 4

- 1. Engine pulley
- 2. Left hand belt cover
- 3. Right hand idler bracket

9. Remove the deck from under the tractor.

Note: Refer to the *Operator's Manual* for instructions on how to remove the deck from under the tractor.

Step

3

Replacing the Upper Deck Belt

Parts needed for this step:

1	Belt
---	------

Procedure

Note: Refer to Figure 4 for this procedure.

1. Use a 3/8-inch socket and ratchet to remove the 3 screws that secure the left belt cover from the cutting deck.
2. Use a 5/8-inch socket and ratchet and a 5/8-inch box/open end wrench to loosen (not remove) both the upper belt (engine to deck belt) and the idler pulleys on their idler brackets.

Note: This will provide sufficient belt guide clearance to remove the belt from the pulleys.

3. Remove and discard the damaged upper deck belt.
4. Install the new belt around the upper pulley of the left spindle and route around the 2 upper belt idler pulleys.

Note: Ensure that the belt is routed between the 2 belt keepers and the pulleys on both idler brackets.

5. Tighten both idler pulleys mounting hardware.
6. Install the left belt cover.
7. Set the deck aside.

Step

4

Removing the Lower PTO Lever

No Parts Required

Procedure

1. Lift the engine hood.
2. Drain the fuel tank or remove the fuel cap from the tank, place a piece of thin plastic film over the mouth of the tank, and replace the fuel cap securely.
3. Remove the fuel tank mounting hardware (Figure 5).

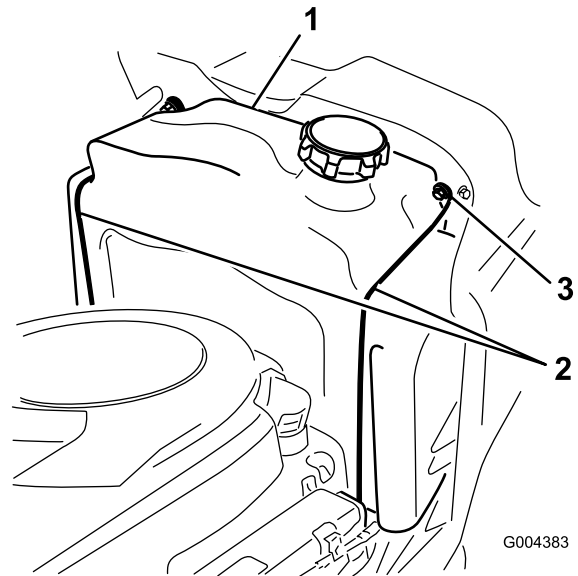


Figure 5

1. Fuel tank
2. Fuel tank brackets
3. Screws

4. **Carefully** lift the tank up and out to provide access to the bolt and nut connection of the stop engagement bracket and the upper and lower PTO levers (Figure 6).



Watch that the fuel line connected to the fuel tank is not kinked, pulled from the fuel tank nipple, and that there is not stress placed on the nipple that would cause it to break.

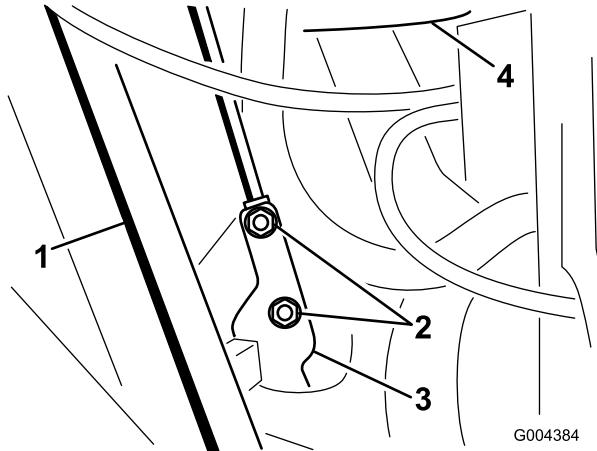


Figure 6

- 1. Steering column
- 2. Flange locknuts
- 3. Stop engagement bracket
- 4. Bottom of fuel tank

5. Use a 1/2-inch socket and ratchet to remove and discard the 2 flange locknuts that secure the connection of the stop engagement bracket and the upper and lower PTO levers (Figure 6).

Note: The 2 carriage screws are secured in the upper PTO lever by 2 speed nuts; do not remove.

6. Remove the stop engagement bracket and lower PTO lever from the two screws attached to the upper PTO lever.

Note: If the spring attached to the lower PTO becomes detached, install it as shown in Figure 7.

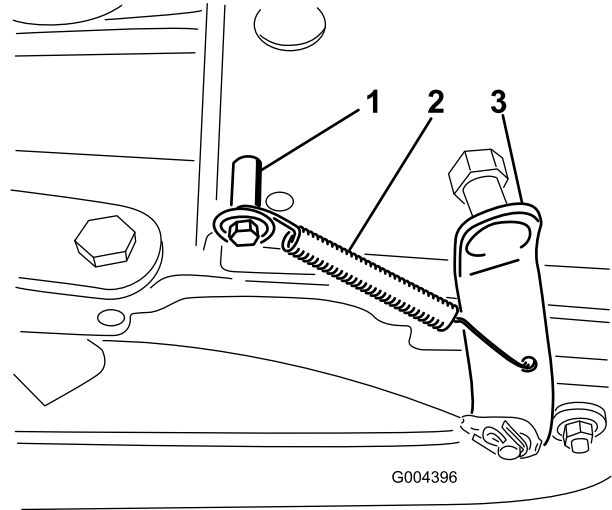


Figure 7

- 1. Shoulder bolt
- 2. Spring
- 3. Lower PTO lever

7. Push up the lower PTO lever to slip the split plastic bushing out the hex hole in the frame.
8. Push the plastic split bushing off the round section of the lower PTO lever shaft.
9. Remove the lower PTO lever down through the hex hole of the frame. Discard the lower PTO lever.

Step

5

Install the New Lower PTO Lever

Parts needed for this step:

1	Lower PTO lever
2	Flange locknut

Procedure

1. Install the new lower PTO lever, using the 2 flange locknuts provided in the kit.

Refer to Figure 8 and Figure 9 for the correct assembly sequence.

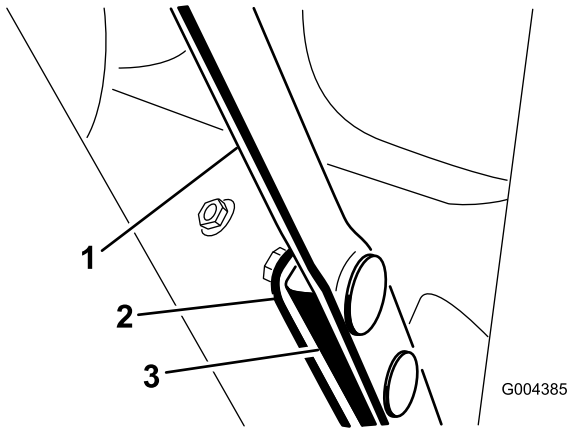


Figure 8

- 1. Upper PTO lever
- 2. Stop engagement bracket
- 3. Lower PTO lever

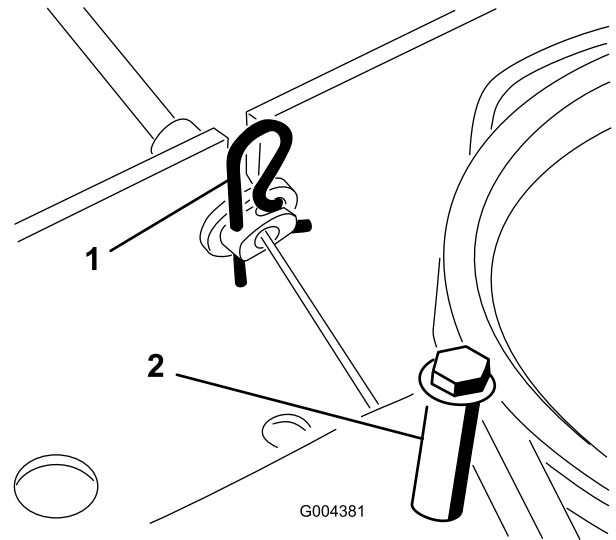


Figure 10

- 1. Hairpin clip
- 2. Screw and spacer

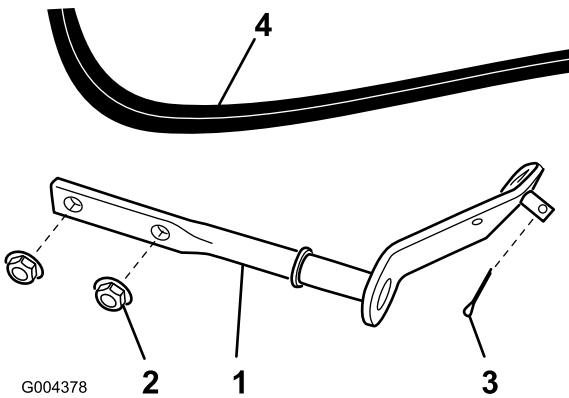


Figure 9

- 1. Lower PTO lever
- 2. Flange locknut (2)
- 3. Cotter pin (through the stud)
- 4. Belt

Note: If the tank was not removed, remove the plastic film from under the fuel cap and replace the fuel cap.

2. Install the fuel tank.
3. Slide the deck under the tractor and connect the lift links and the front hanger bar as described in the *Operator's Manual*.
4. Attach the deck engagement cable spring to the right idler bracket assembly.
5. Install the deck engagement cable spring to the right idler bracket assembly.
6. Install the deck engagement cable into the rear cross brace (Figure 10).

7. Connect the deck engagement cable loop end to the stud on the new lower PTO lever with the new cotter pin (Figure 9).

Note: No flat washer is required.

8. Insert the cotter pin and bend the cotter pin ends as shown in Figure 11.

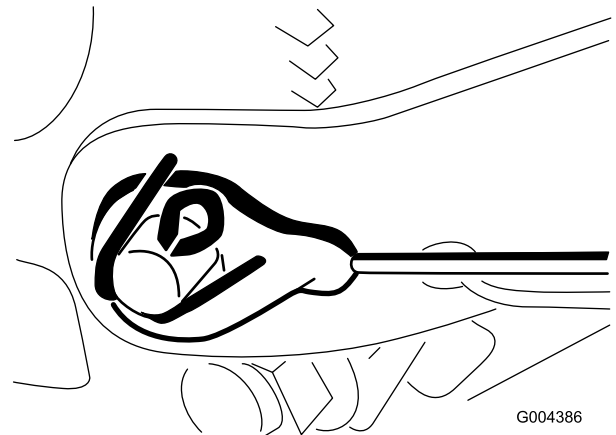



Figure 11

9. Place the upper deck belt around the engine pulley.

Note: Ensure that the belt is not twisted.

10. Install both engine pulley belt guides (Figure 1).
11. With the deck installed and leveled properly, raise the deck to its highest cutting position.
12. Ensure that the belt has sufficient clearance with the stud on the lower PTO lever when

the PTO is in the engaged position, the unit is running, and the deck is engaged.



Do not get your hands or feet near the cutting deck when the engine is running.

13. Shut off the engine. If the clearance is good with the deck running in the highest position, you have completed the procedure.

Note: If the lower PTO lever stud still interferes with the upper deck belt when running in the highest cutting position, then go to the next step.

Note: The following step will result in the cutting deck cutting lower in all positions. The lowest position may cause scalping if the deck wheels are not properly adjusted.

14. Release the manual PTO lever in the disengaged position and lower the deck to its lowest cutting height.
15. From the right or left side of the tractor, locate the rear deck lift arm (Figure 12).

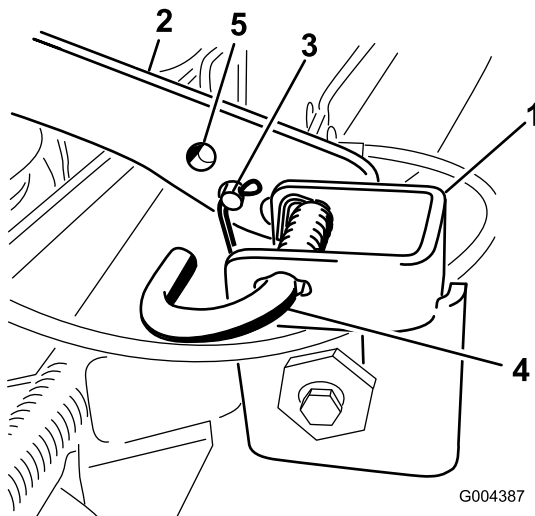



Figure 12

- | | |
|--------------------------|----------------------------------|
| 1. Deck lift bracket | 4. J-pin |
| 2. Lift arm | 5. Move the lift cable pin here. |
| 3. Lift cable clevis pin | |

16. Support the deck so that there is no weight hanging on the lift arm.
17. Pull the J-pin out so that the lift arm disengages from the deck lift bracket.
18. Remove the cotter pin and clevis pin that secures the lift cable to the lift arm (Figure 12).

19. Remove the clevis pin and move the lift cable end loop to the hole indicated in Figure 12. Secure the lift cable with the clevis pin and cotter pin previously removed.
20. Repeat steps 16 through 19 for the other lift arm.
21. Raise the deck to its highest cutting position.
22. Ensure that the belt has sufficient clearance with the stud on the lower PTO lever when the PTO is in the engaged position. Check this clearance when the unit is running and the deck engaged.



Do not get your hands or feet near the cutting deck when the engine is running.

