



Workman[®] 1100 Utility Vehicle

Model No. 07252 - 210000001 and up.

Model No. 07252TC - 210000001 and up.

Parts Catalog

Ordering Replacement Parts

To order replacement parts, please supply the part number, the quantity, and the description of each part desired.

Understanding Reference Numbers

Each identified part in an illustration has a reference number. The reference number for a part also appears in the parts list, along with other information about the part.

This catalog uses two special reference number formats, one to indicate parts in a service assembly and another to indicate the quantity of a given part in an illustration.

Service Assembly Reference Numbers

Parts in service assemblies have reference numbers in the form a:b. The a represents the reference number of the entire service assembly and the b represents a sequential number unique to each part within the service assembly.

For example, a wheel assembly might be identified by reference number 6, the tire by 6:1, the valve by 6:2, and the wheel by 6:3. When you order the assembly identified by reference number 6, you receive all parts identified by reference numbers 6:1, 6:2, and 6:3. However, you may also order any part individually. Reference numbers of this type appear in illustrations and in part lists.

Reference Numbers Indicating Quantity

In an illustration, if a reference number indicates more than one part, the reference number has the form nX y. The n represents the quantity of the part, the X is the multiplication symbol, and the y represents the reference number.

For example, in an illustration, the reference number 2X 37 means that two of the parts identified by reference number 37 are indicated.

Contents

Description	Page	Description	Page
Hood Assembly 3	Starter Generator Assembly No. 99-7108 23
Pedal Assembly 4	Crankshaft Assembly Kohler CH12 PA-941521 24
Shifter Assembly 5	Crankcase Assembly Kohler CH12 PA-941521 25
Frame Assembly 6	Oil Pan And Lubrication Assembly Kohler CH12 PA-941521 26
Seatbase Assembly 7	Head, Valve And Breather Assembly Kohler CH12 PA-941521 27
Front Tire And Steering Assembly 8	Ignition and Electrical Assembly Kohler CH12 PA-941521 28
Rear Tire And Transaxle Assembly 9	Blower Housing and Baffle Assembly Kohler CH12 PA-941521 29
Driven Clutch Assembly No. 99-7104 10	Fuel System Assembly Kohler CH12 PA- 941521 30
Transaxle Assembly No. 99-7941 11	Air Intake and Filtration Assembly Kohler CH12 PA-941521 31
Right Hand Brake Assembly No. 99-7136 13	Exhaust Assembly Kohler CH12 PA-941521 32
Left Hand Brake Assembly No. 99-7137 14		
Driven Mount Assembly 15		
Air Cleaner Assembly No. 99-7120 16		
Upper Steering Assembly 17		
Steering Gearbox Assembly 18		
Box And Tailgate Installation Assembly 19		
Box And Tailgate Assembly 20		
Engine And Clutch Assembly 21		

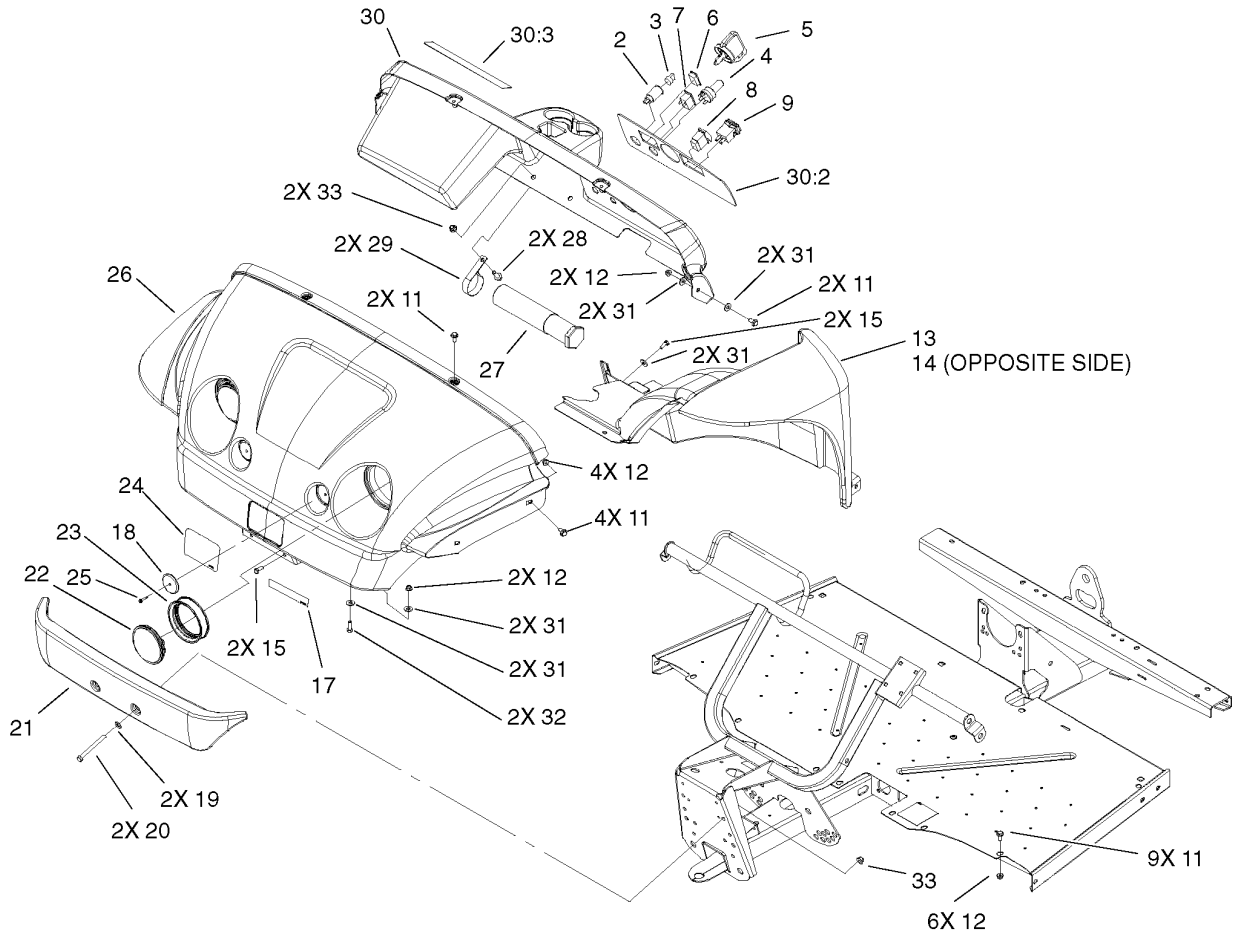
Part Description Abbreviations

Part descriptions in this catalog may include the following abbreviations.

AR. as required	HYD. hydraulic
ASM. assembly	LH. left hand
BBC. blade brake clutch	NI. nylon insert
CARR. carriage	NPTF. national pipe thread fine
DEG. degrees	PFH. phillips flat head
EXT. external	PPH. phillips pan head
FH. flat head	PPHTF. phillips pan head thread forming
GA. gauge	PRH. phillips round head
HD. heavy-duty	PTH. phillips truss head
HF. hex flange	PTO. power-take-off
HH. hex head	RH. right hand
HHF. hex head flange	ROPS. roll-over protection system
HHFTF. hex head flange thread forming	SFH. slotted fillister head
HJ. hex jam	SHH. slotted hex head
HLH. hex lag head	SHWH. slotted hex washer head
HOC. height-of-cut	SPH. slotted pan head
HSBH. hex socket button head	SQH. square head
HSFH. hex socket flat head	SRH. slotted round head
HSH. hex socket head	STD. standard
HWH. hex washer head	TAP. self tapping
HWHTF. hex washer head thread forming	TTH. torx truss head

Footnotes

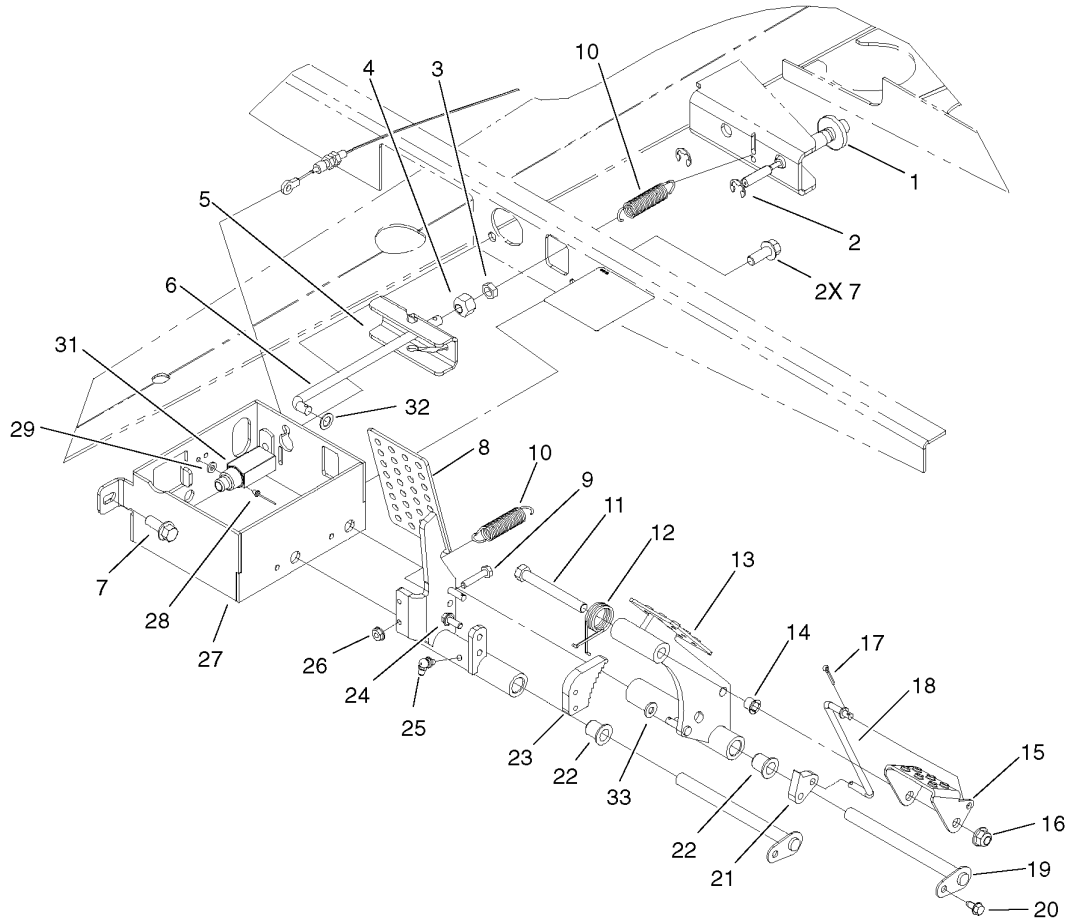
- ❶ Not illustrated
- ❷ Not serviced
- ❸ Obtain Parts From Kohler



Hood Assembly

Ref	Part No.	Qty.	Description
2	99-7411	1	Point-Power
3	99-7416	1	Cap
4	99-7429	1	Switch-Key
5	99-7418	2	Key-Ignition
6	99-7420	1	Plug-Hole
7	99-7410	1	Light-Oil
8	95-8999	1	Switch
9	94-4208	1	Hourmeter
11	3234-5	15	Screw-HHF
12	104-8300	14	Nut-Flange, NI
13	99-7279	1	LH Fender ASM
14	99-7280	1	RH Fender ASM
15	32104-32	4	Screw-HWH
17	99-7353	1	Decal
18	99-7312	2	Reflector
19	3256-24	2	Washer-Flat
20	323-42	2	Screw-HH
21	99-7733	1	Bumper-Plastic
22	99-7310	2	Headlight
23	99-7311	2	Mount-Headlight
24	99-7339	1	Decal
25	32144-89	2	Screw-Forming, Thread
26	99-7270	1	Hood
27	74-0720	1	Tube-Manual

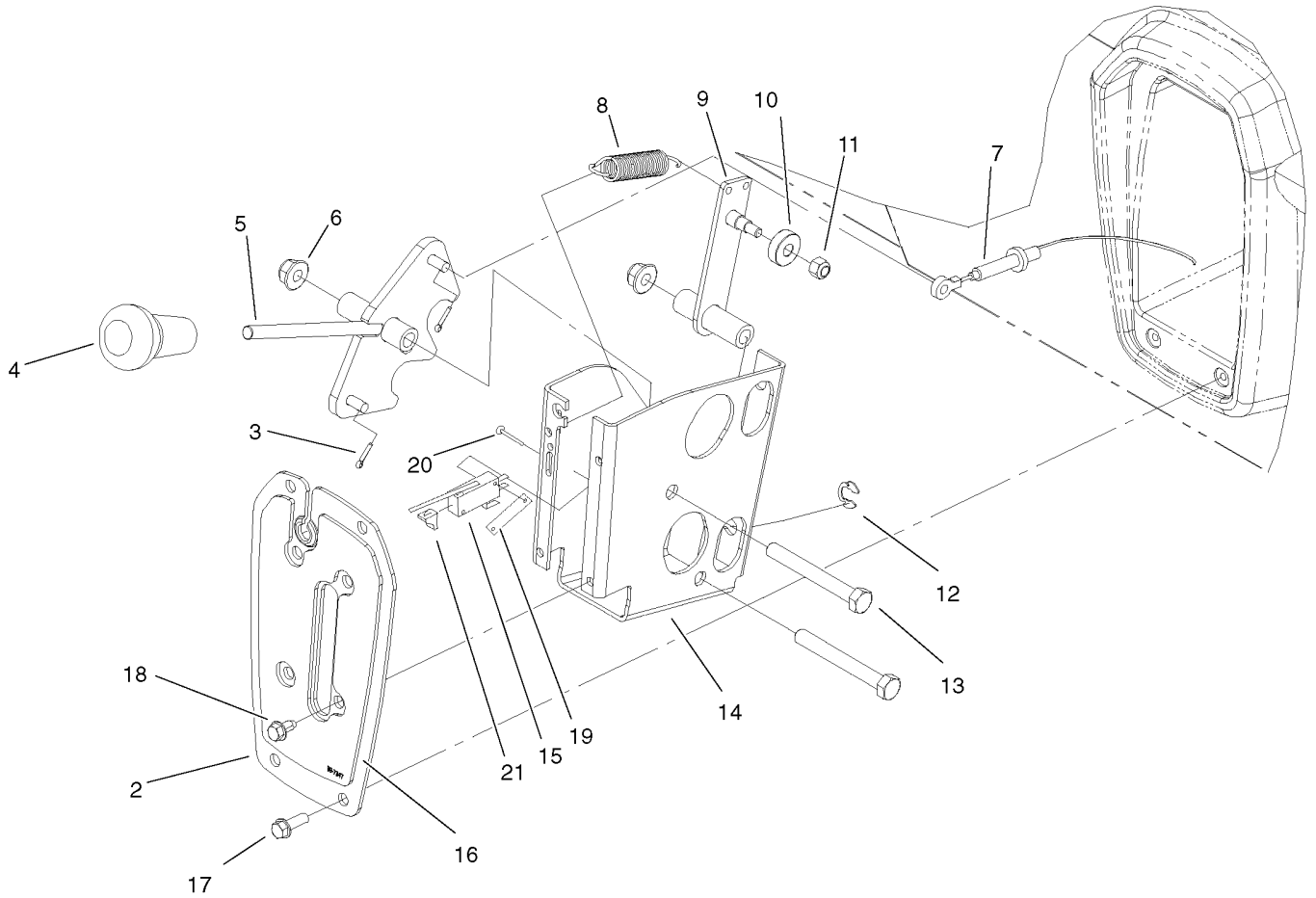
Ref	Part No.	Qty.	Description
28	3234-11	2	Screw-HHF
29	2412-133	2	R-Clamp
30	99-7360	1	Dash ASM
30:2	99-7343	1	Decal-Warning, Dash
30:3	99-7344	1	Decal-Danger
31	3256-3	10	Washer-Flat
32	3234-17	4	Screw-HHF
33	104-8301	4	Nut-Flange, NI



Pedal Assembly

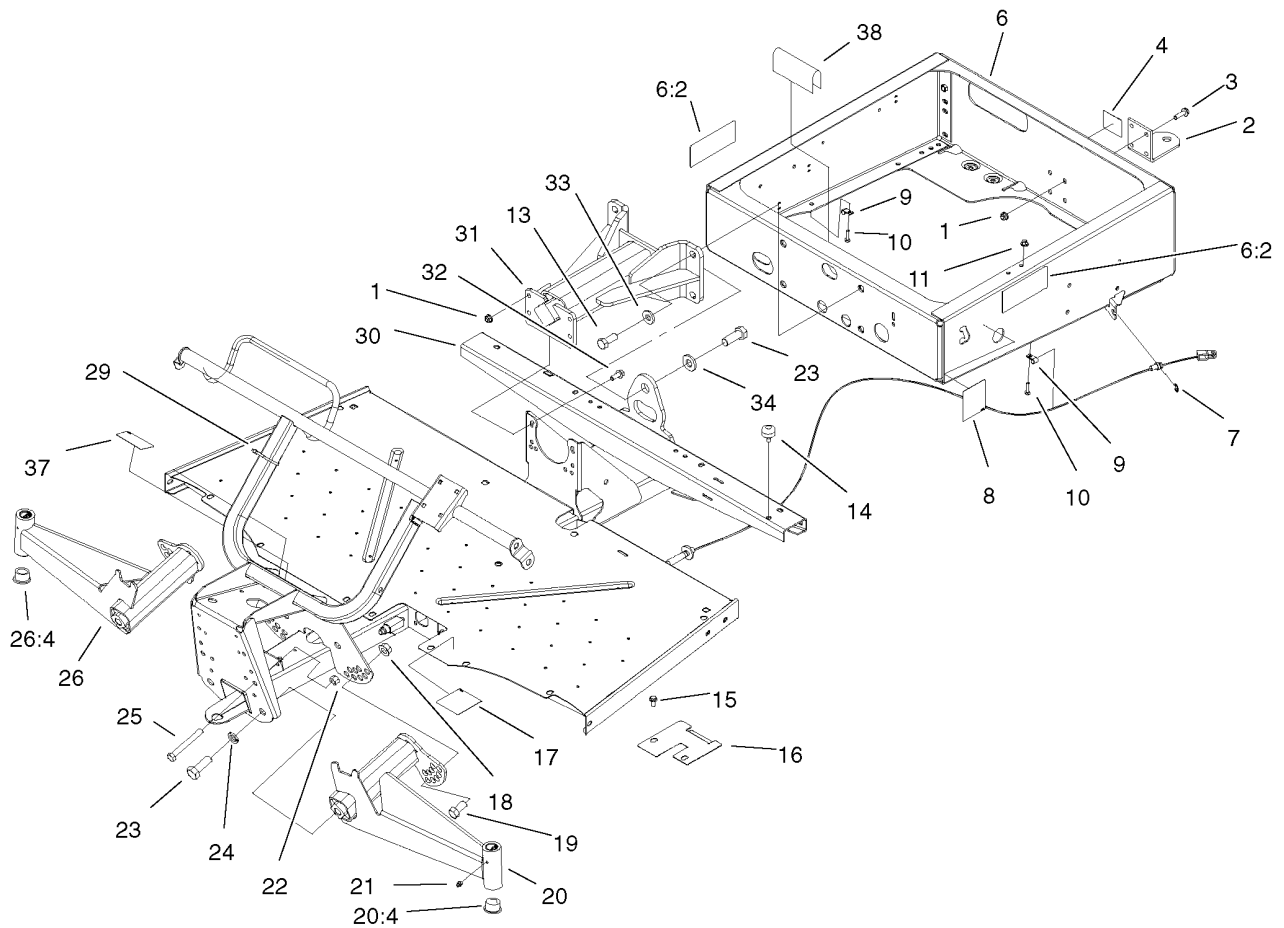
Ref	Part No.	Qty.	Description
1	99-7109	2	Cable-Brake
2	32120-47	2	Ring-Retaining, External
3	3219-3	1	Nut-Hex
4	99-7123	1	Nut-Equalizer
5	99-7093	1	Bracket-Brake, Adjustment
6	99-7060	1	Rod-Brake
7	3234-11	3	Screw-HHF
8	99-7212-03	1	Throttle ASM
9	321-8	2	Screw-HH
10	99-7141	2	Spring-Return, Pedal
11	323-54	1	Screw-HH
12	99-7140	1	Spring-Torsion
13	99-7211-03	1	Brake ASM
14	52-2891	2	Bushing-Link, Steering
15	99-7227-03	1	Pedal-Park
16	104-8301	2	Nut-Flange, NI
17	3272-6	5	Pin-Cotter
18	99-7221	1	Rod-Park
19	99-7169	2	Pivot-Pedals
20	12-3270	2	Screw
21	99-7218	1	Detent
22	256-155	4	Bushing-Flange
23	99-7214	1	Pawl-Brake
24	3234-33	2	Screw-HHF

Ref	Part No.	Qty.	Description
25	302-60	2	Fitting-Grease, 90 DEG
26	32149-2	2	Nut-Keps
27	99-7210-03	1	Base ASM
28	3269-28	2	Rivet-Pop
29	3256-51	2	Washer-Flat
31	99-7407	1	Switch
32	3256-46	1	Washer-Flat
33	3256-22	1	Washer-Flat



Shifter Assembly

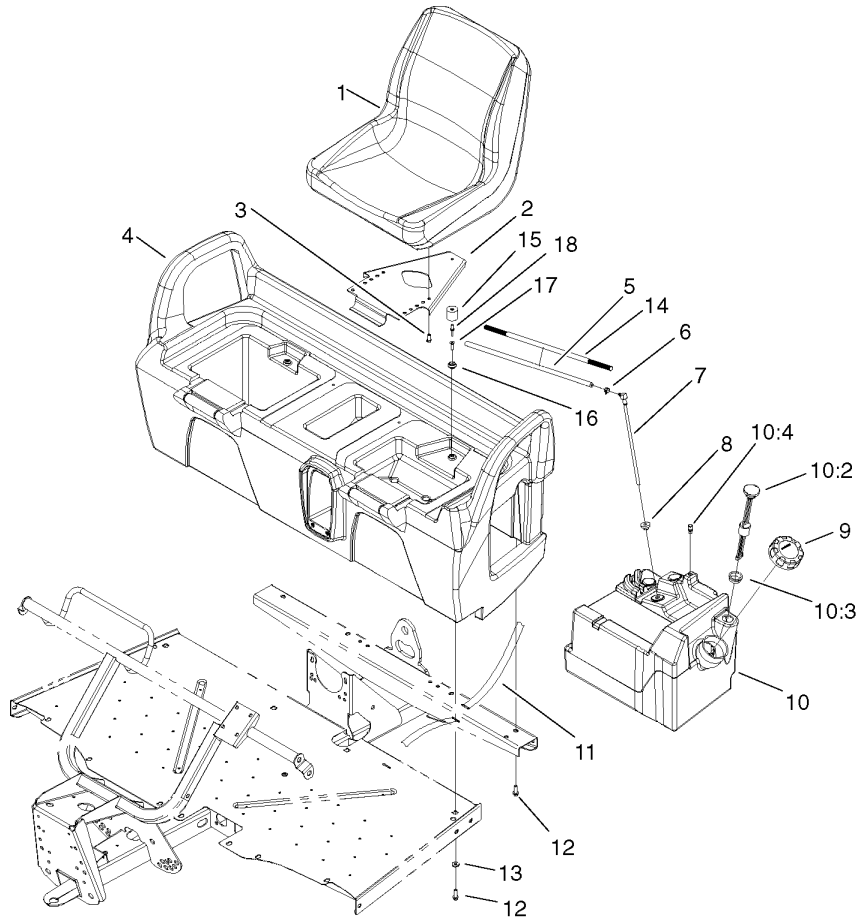
Ref	Part No.	Qty.	Description
2	99-7887-03	1	Plate-Shifter
3	3272-5	2	Pin-Cotter
4	99-7981	1	Knob-Grip, Soft
5	99-7879	1	Lever-Shifter
6	104-8301	2	Nut-Flange, NI
7	99-7112	2	Cable-Shift
8	99-7141	1	Spring-Return, Pedal
9	99-7176	1	Detent
10	251-307	1	Bearing-Ball
11	3296-42	1	Nut-Lock, NI
12	32151-101	2	E-Ring
13	323-14	2	Screw-HH
14	104-6509-03	1	Bracket-Shift
15	88-9932	1	Switch-Micro
16	99-7952	1	Decal-Shifter
17	32105-15	4	Screw
18	12-3270	4	Screw
19	3290-354	1	Nut-Speed
20	3290-313	2	Screw-Ph
21	93-3240	1	Plunger-Seal



Frame Assembly

Ref	Part No.	Qty.	Description
1	104-8301	8	Nut-Flange, NI
2	99-7654-03	1	Hitch-Duty, Light
3	3234-24	4	Screw-HHF
4	99-7350	1	Decal-Information
6	99-7362	1	Rear Frame ASM
6:2	99-7345	2	Decal-Warning
7	32120-47	2	Ring-Retaining, External
8	99-7349	1	Decal-Information, Boxlatch
9	2412-89	5	Clamp
10	321-6	4	Screw-HH
11	32128-33	4	Nut-HF
13	327-4	4	Screw-HH
14	87-2440	1	Bumper-Rubber
15	3234-5	2	Screw-HHF
16	99-7275-03	1	Cover-Pedal
17	99-7346	1	Decal-Information, Brake
18	32128-54	2	Nut-HF
19	3214-2	2	Screw-HH
20	99-7685	1	LH A-Arm ASM
20:4	3-0348	2	Bushing
21	302-5	2	Fitting-Grease
22	3296-23	2	Nut-Lock, NI
23	328-24	5	Screw-HH
24	3254-7	4	Washer-Lock, Int

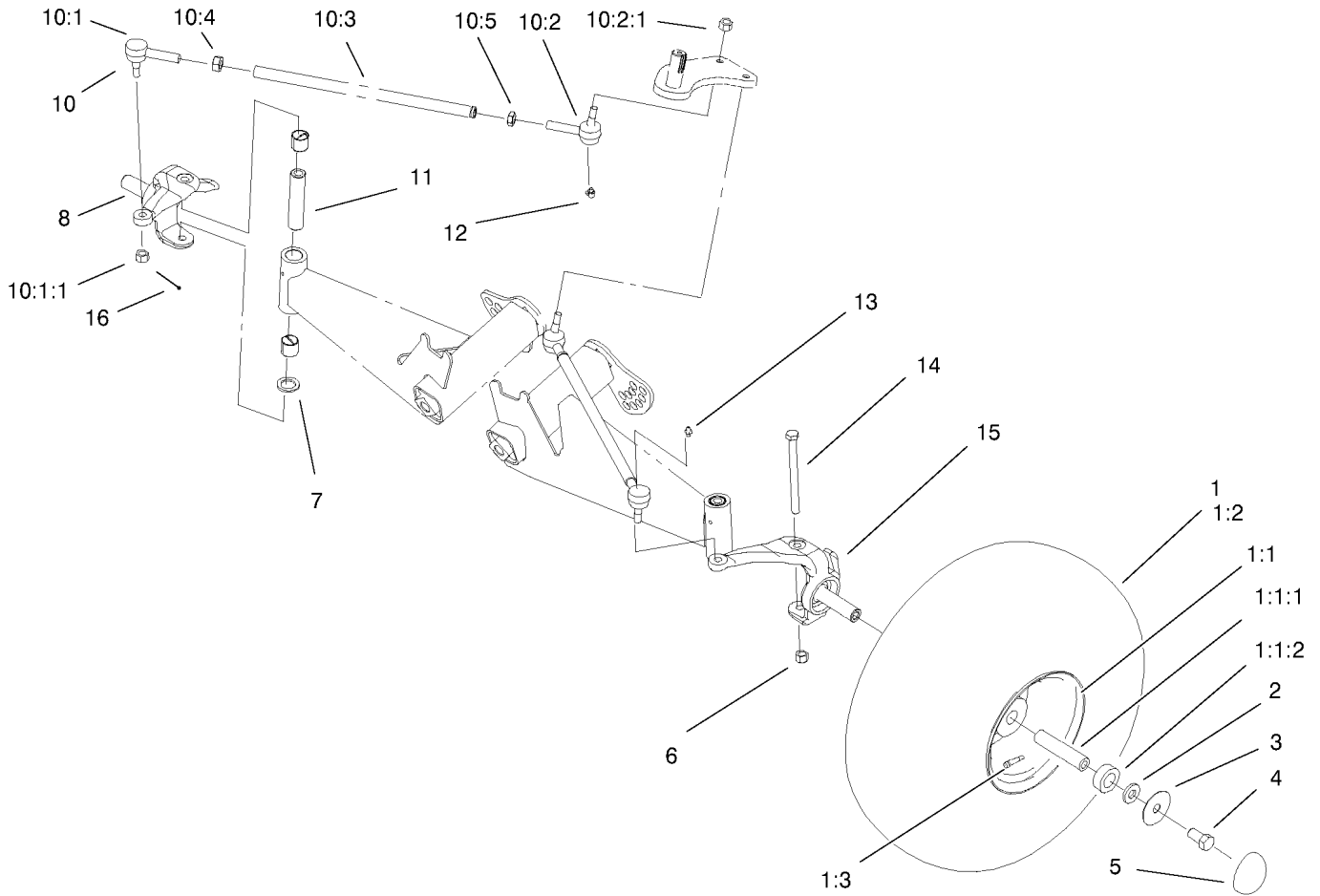
Ref	Part No.	Qty.	Description
25	325-17	2	Screw-HH
26	99-7684	1	RH A-Arm ASM
26:4	3-0348	2	Bushing
29	3290-379	27	Tie-Cable
30	99-7463-03	1	Frame-Front
31	99-7700	1	Pivot Yoke ASM
32	3234-11	4	Screw-HHF
33	99-7667	4	Washer-Flat
34	87-3060	1	Washer-Hardened
37	104-6855	1	Decal-Capacity
38	95-5686	1	Trim



Seatbase Assembly

Ref	Part No.	Qty.	Description
1	99-7281	2	Seat
2	99-7829	2	Bracket-Seat
3	33114-016	8	Screw-HH
4	104-6401	1	Seat Base ASM
5	99-7187	1	Hose-Fuel
6	2412-98	1	Clamp
7	99-7264	1	Pipe-Stand
8	46-6560	1	Bushing
9	95-4192	1	Unleaded Gas Cap ASM
10	99-7323	1	Fuel Tank ASM
10:2	99-7262	1	Gauge-Fuel
10:3	95-8972	1	Grommet
10:4	99-7267	1	Vent-Air
11	3339-175	1	Strapping-Web, 48 Inch
12	3234-17	8	Screw-HHF
13	88-7200	4	Washer-Flat
14	99-7129	1	Conduit-Line, Fuel
15	99-7830	2	Rubber Receptical ASM
16	99-7833	2	Post-Holding
17	32108-5	2	Screw-FH
18	3290-412	2	Rivet

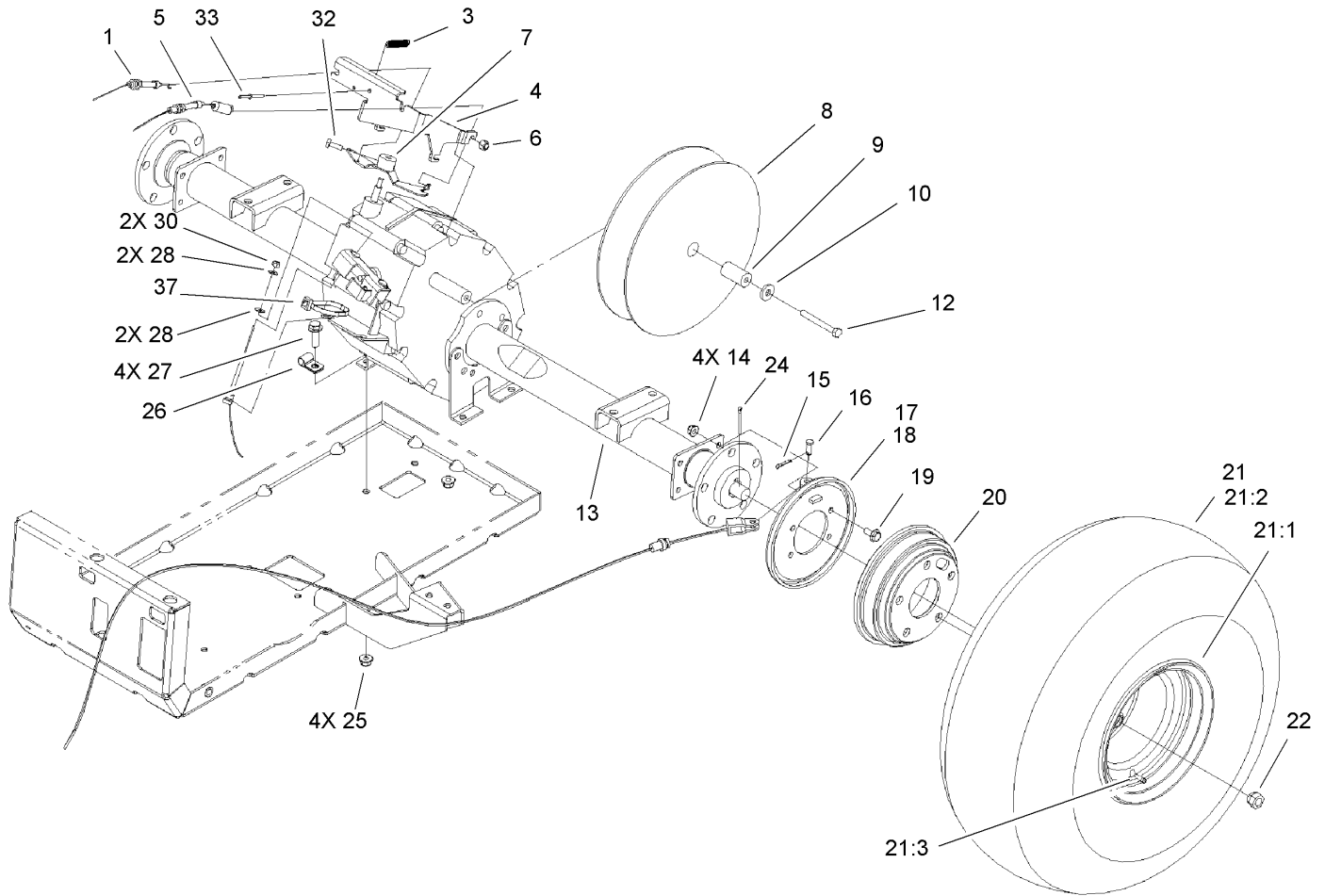
--	--	--	--



Front Tire And Steering Assembly

Ref	Part No.	Qty.	Description
② 1		2	Wheel And Tire ASM
1:1	99-7303	1	Wheel ASM
1:1:1	104-1699	1	Spacer
1:1:2	104-1698	2	Bearing-Ball
1:2	99-7300	1	Tire
1:3	232-27	1	Stem-Valve
2	99-7667	2	Washer-Flat
3	99-7719	2	Washer
4	327-2	2	Screw-HH
5	94-7871	2	Cap-Dust
6	3296-23	2	Nut-Lock, NI
7	256-115	2	Washer-Thrust
8	99-7487-03	1	Spindle-RH
② 10		2	Rod-Tie
10:1	112772-03	1	Joint-Ball, RH
10:1:1	915031	1	Nut
10:2	112771-03	1	Joint-Ball, LH
10:2:1	915031	1	Nut
10:3	99-7600-03	1	Rod-Tie
10:4	3220-11	1	Nut-Jam
10:5	3218-21	1	Nut-Jam
11	99-7499	2	Sleeve-Kingpin
12	302-60	2	Fitting-Grease, 90 DEG
13	302-5	2	Fitting-Grease

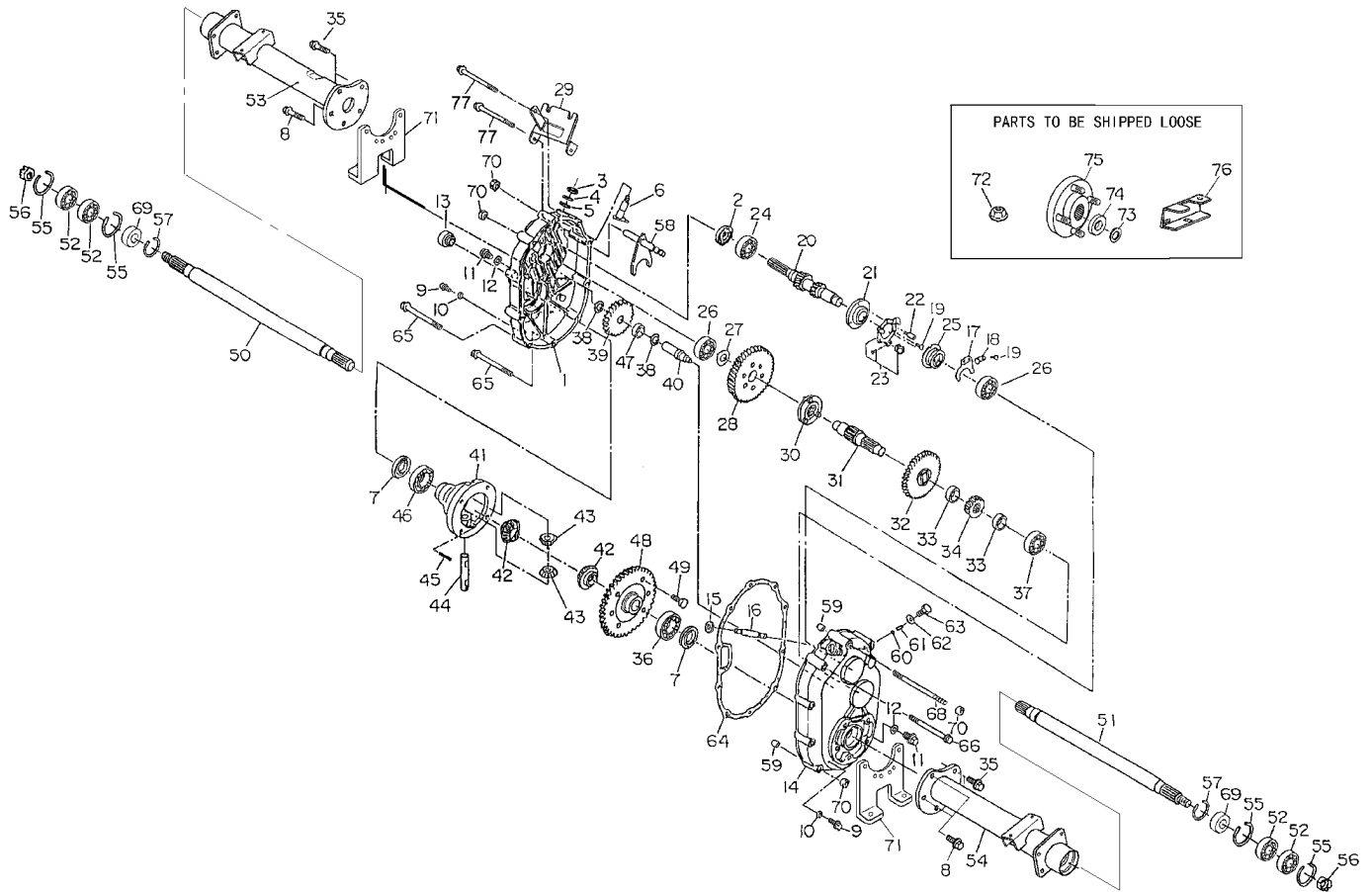
Ref	Part No.	Qty.	Description
14	325-20	2	Screw-HH
15	99-7486-03	1	Spindle-LH
16	3272-7	4	Pin-Cotter



Rear Tire And Transaxle Assembly

Ref	Part No.	Qty.	Description
1	104-6474	1	Cable-Governor, 12Hp
3	99-7078	1	Spring-Governor
4	99-7054	1	Bracket-Cables
5	99-7110	1	Cable-Throttle
6	33024-00	3	Nut-Lock
7	99-7081	1	Bracket-Governor
8	99-7104	1	Clutch-Driven
9	99-7174	1	Spacer-Clutch
10	5-0838	1	Washer
12	322-33	1	Screw-HH
13	99-7941	1	Transaxle
14	104-8300	8	Nut-Flange, NI
15	3272-10	2	Pin-Cotter
16	283-62	2	Pin-Clevis
17	99-7136	1	Brake-RH
18	99-7137	1	Brake-LH
19	3234-5	10	Screw-HHF
20	104-6500	2	Drum-Brake
21		2	Wheel And Tire ASM
21:1	98-4753	1	Wheel
21:2	99-7301	1	Tire
21:3	232-27	1	Stem-Valve
22	242-50	10	Nut-Lug
24	3272-12	2	Pin-Cotter

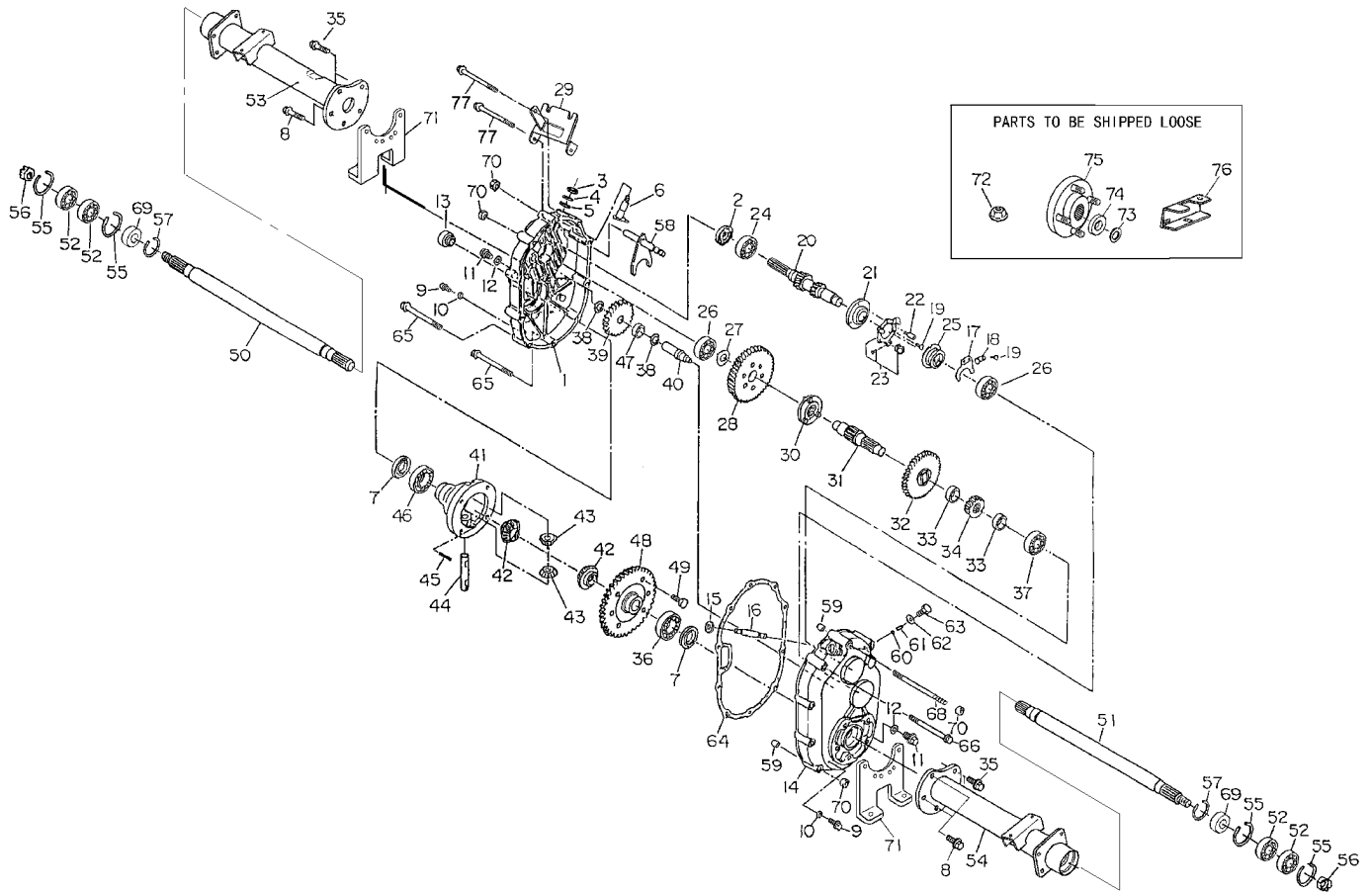
Ref	Part No.	Qty.	Description
25	104-8301	4	Nut-Flange, NI
26	2412-10	1	R-Clamp
27	3234-24	4	Screw-HHF
28	3256-49	2	Washer-Flat (Only On: 38053)
30	3296-2	2	Nut-Lock
32	3241-6	2	Screw-SQH
33	99-7122	1	Rivet-Annodized
37	3290-378	1	Tie-Cable



Transaxle Assembly No. 99-7941

Ref	Part No.	Qty.	Description
1	104-1601	1	Case-LH, Complete
2	104-1602	1	Seal-Oil
3	104-1603	1	Seal-Oil
4	104-1604	1	Ring-Snap
5	104-1605	1	Spacer
6	104-1606	1	Shaft-Selector
7	104-1607	2	Seal-Oil
8	104-1608	4	Bolt-Flange
9	104-1609	2	Plug-Check, Oil
10	104-1610	2	Gasket
11	104-1611	2	Plug-Drain, Oil
12	104-1612	2	Gasket
13	104-1613	1	Plug-Filler, Oil
14	104-1614	1	Case-Complete, RH
15	104-1615	1	Seal-Oil
16	104-1616	1	Shaft-Governor
17	104-1617	1	Fork-Governor
18	104-1618	1	Stopper
19	104-1619	4	Screw And Washer ASM
20	104-1620	1	Shaft-Input, Complete
21	104-1621	1	Base-Governor
22	104-1622	1	Pin-Lock
23	104-1623	1	Unit-Plate, Governor
24	104-1624	1	Bearing-Ball

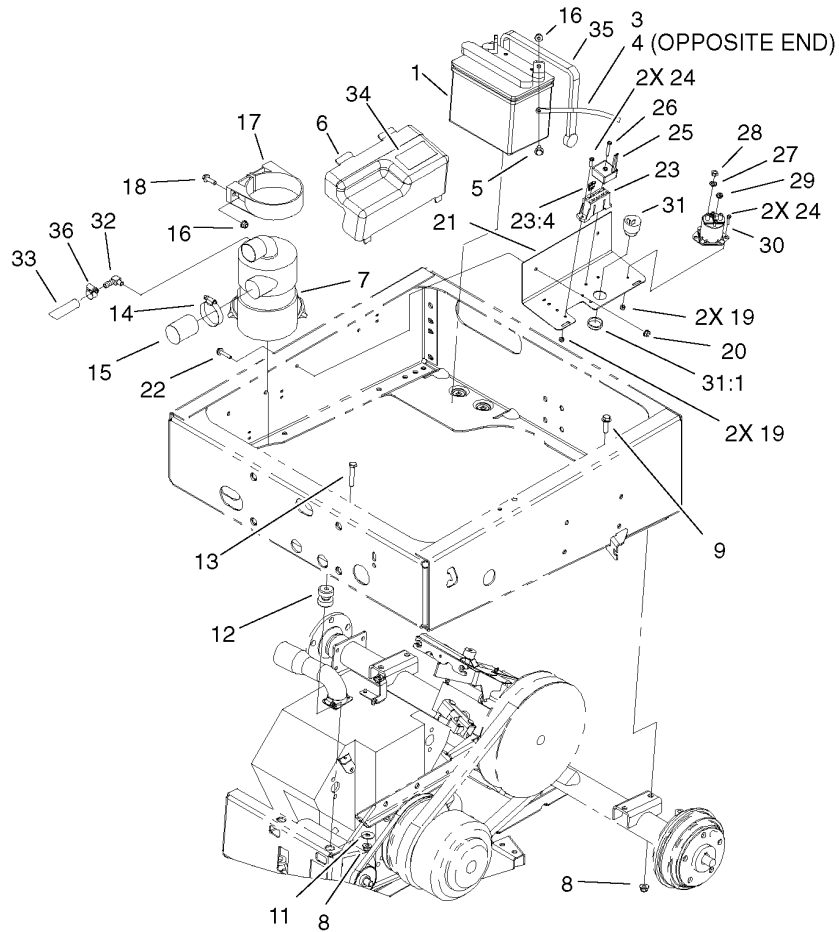
Ref	Part No.	Qty.	Description
25	104-1625	1	Sleeve-Governor
26	104-1626	2	Bearing-Ball
27	104-1627	1	Spacer
28	104-1628	1	Gear
29	104-1629	1	Bracket-Wire, Change
30	104-1630	1	Clutch-Pin
31	104-1631	1	Shaft-Center
32	104-1632	1	Gear-47
33	104-1633	2	Collar
34	104-1634	1	Gear
35	104-1635	6	Bolt-Flange
36	104-1636	1	Bearing-Ball
37	104-1637	1	Bearing-Ball
38	104-1638	2	Spacer
39	104-1639	1	Gear-34
40	104-1640	1	Shaft-Counter
41	104-1641	1	Case-Differential
42	104-1642	2	Gear-Side, Differential
43	104-1643	2	Pinion-Differential
44	104-1644	1	Shaft-Differential
45	104-1645	1	Pin
46	104-1646	1	Bearing-Ball
47	104-1647	1	Bearing-Needle
48	104-1648	1	Gear-62



Transaxle Assembly No. 99-7941 (continued)

Ref	Part No.	Qty.	Description
49	104-1649	6	Bolt
50	104-1650	1	Shaft-Axle, LH
51	104-1651	1	Shaft-Axle, RH
52	104-1652	4	Bearing-Ball
53	104-1653	1	Case-Axle, LH
54	104-1654	1	Case-Axle, RH
55	104-1655	4	Ring-Snap
56	104-1656	2	Nut-Castle
57	104-1657	2	Ring-Snap
58	104-6870	1	Shaft-Shift, Complete
59	104-1659	2	Knock-Pipe
60	104-1660	1	Ball-Steel
61	104-1661	1	Spring
62	104-1662	1	Gasket
63	104-1663	1	Bolt
64	104-1664	1	Gasket
65	104-1665	6	Bolt-Flange
66	104-1666	1	Bolt-Flange
68	104-6866	1	Bolt
69	104-6867	2	Collar
70	33004-00	11	Nut-HF
71	104-1671	2	Bracket-Axle
72	104-1672	1	Nut-Lock
73	104-1673	2	Washer-Spring

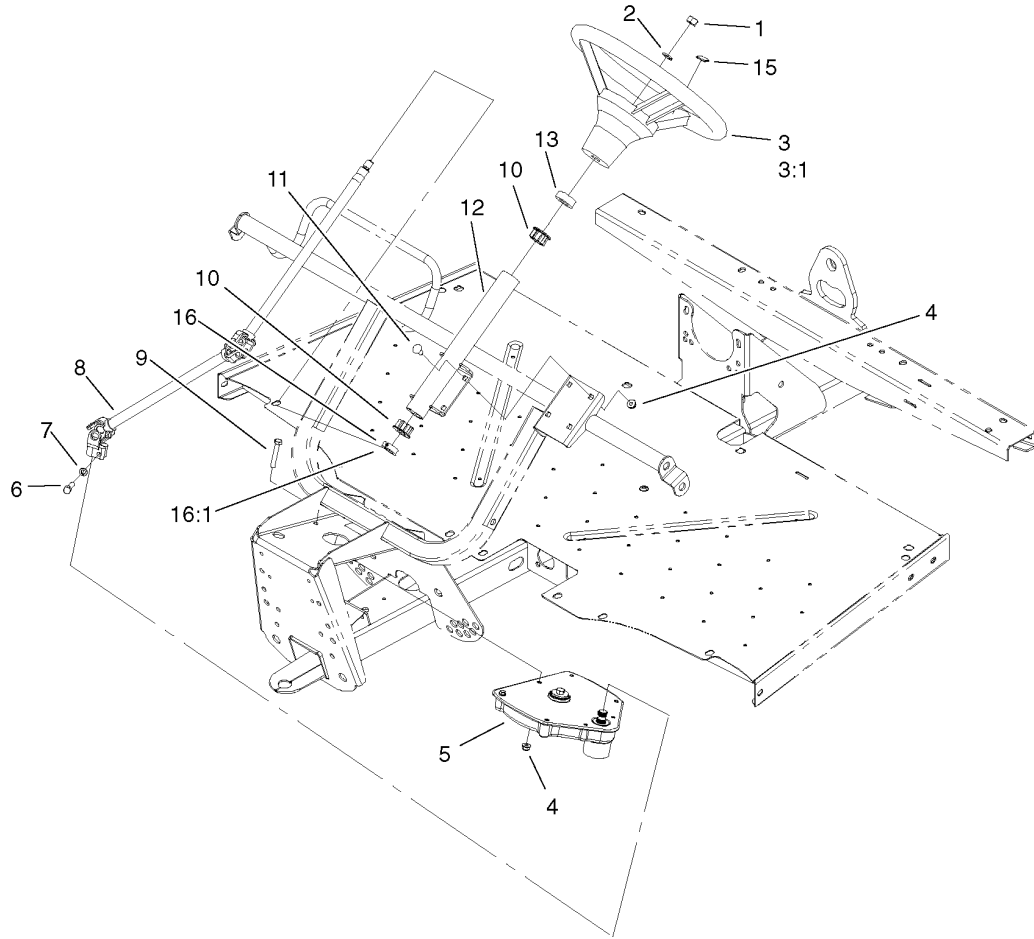
Ref	Part No.	Qty.	Description
74	104-1674	2	Washer
75	104-1675	2	Hub
76	104-6860	1	Lever-Select
77	104-6869	2	Bolt-Flange



Driven Mount Assembly

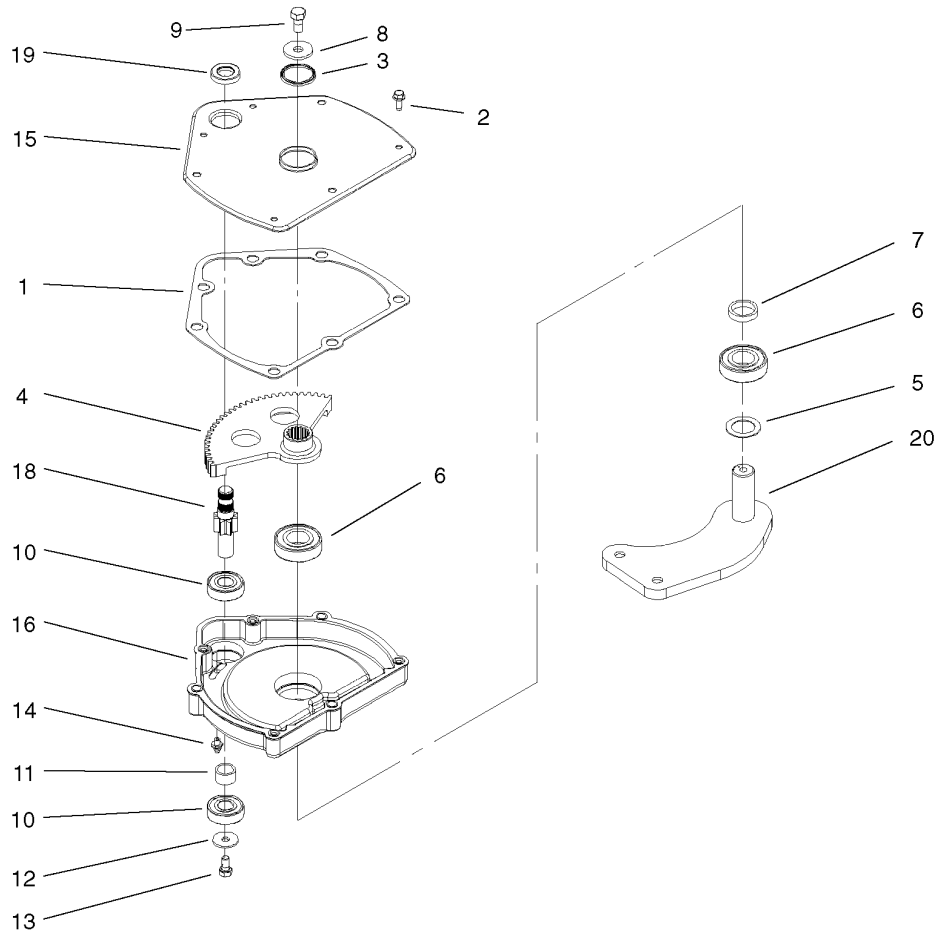
Ref	Part No.	Qty.	Description
1	92-1678	1	Battery (Dry)(Only On: 07252Tc)
1	99-7421	1	Battery (Wet)(Only On: 07252)
3	99-7402	1	Cable-Negative
4	99-7404	1	Cable-Positive
5	3234-5	2	Screw-HHF
6	99-7325	1	Cover-Electrical
7	99-7120	1	Filter-Air
8	104-8301	6	Nut-Flange, NI
9	3234-24	4	Screw-HHF
11	3256-35	2	Washer-Flat
12	95-2596	2	Mount-Iso
13	323-10	2	Screw-HH
14	2412-130	1	Clamp-Hose
15	104-6528	1	Hose-Intake (Only On: 07252Tc)
16	104-8300	4	Nut-Flange, NI
17	95-5806	1	Bracket-Mounting
18	3234-17	2	Screw-HHF
19	3296-2	5	Nut-Lock
20	32128-32	2	Nut-HHF
21	99-7051-03	1	Mount-Component
22	3234-21	2	Screw-Cap
23	99-7412	1	Harness-Wire, Main
23:4	218-578	3	Fuse-10 Amp
24	32105-13	4	Screw-SHH

Ref	Part No.	Qty.	Description
25	99-7409	1	Regulator-Voltage
26	32105-1	1	Screw-SHH
27	3255-8	2	Washer-Lock
28	3218-2	2	Nut-Jam
29	32149-8	2	Nut-Keps
30	99-7406	1	Solenoid
31	80-9330	1	Alarm-Audio
31:1	104-5107	1	Nut-Plastic, Knurled
32	99-7230	1	Fitting-90 DEG
33	94-5625	1	Hose-Overflow, Radiator
34	99-7352	1	Decal-Information
35	99-7197	1	Strap-Epdm
36	2412-36	2	Clamp-Hose



Upper Steering Assembly

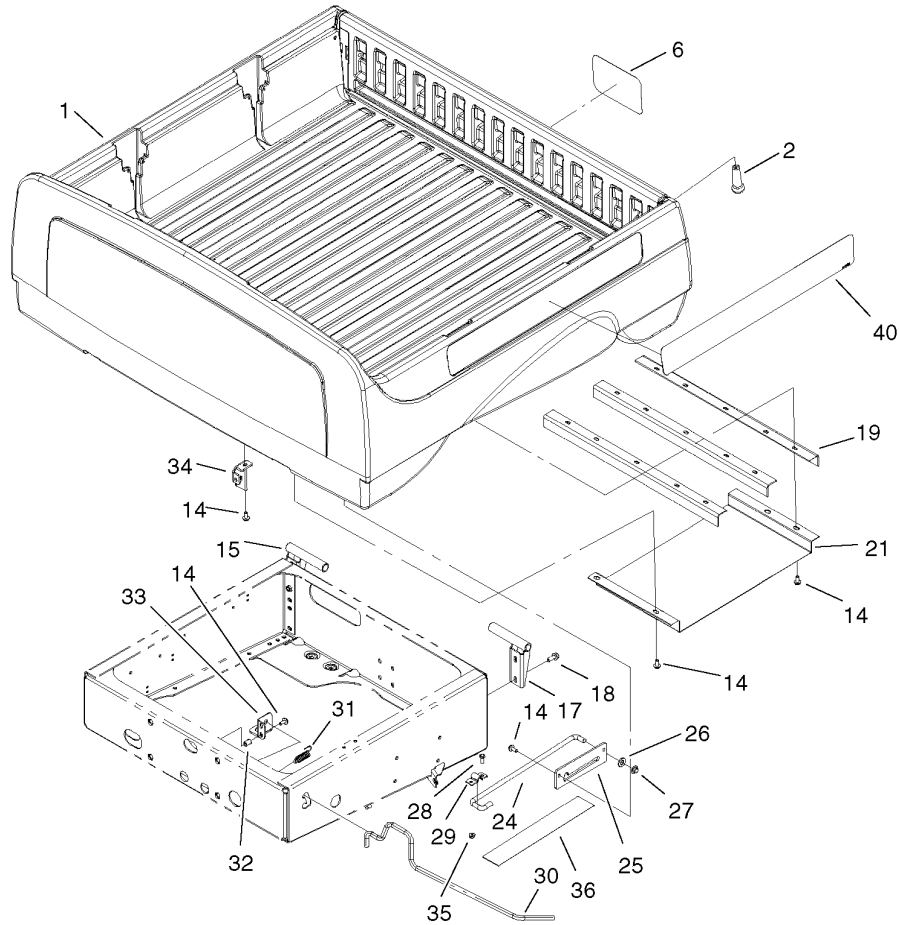
Ref	Part No.	Qty.	Description			
1	3277-1	1	Nut-Hex			
2	48-8070	1	Washer-Lock			
3	98-1471	1	Wheel-Steering			
3:1	98-1468	1	Cover-Wheel, Steering			
4	104-8300	7	Nut-Flange, NI			
5		1	Steering Gearbox ASM			
6	48-7730	1	Screw-HH			
7	3253-4	1	Washer-Lock			
8	99-7653	1	Shaft-Steering			
9	322-10	3	Screw-HH			
10	93-1146	2	Bushing-Upper, Steering			
11	3230-1	4	Bolt-CARR			
12	99-7651-03	1	Column-Steering			
13	21-9260	1	Cover-Dust			
15	98-1459	1	Decal			
16	111383	1	Collar			
16:1	3245-32	1	Screw-HSH			



Steering Gearbox Assembly

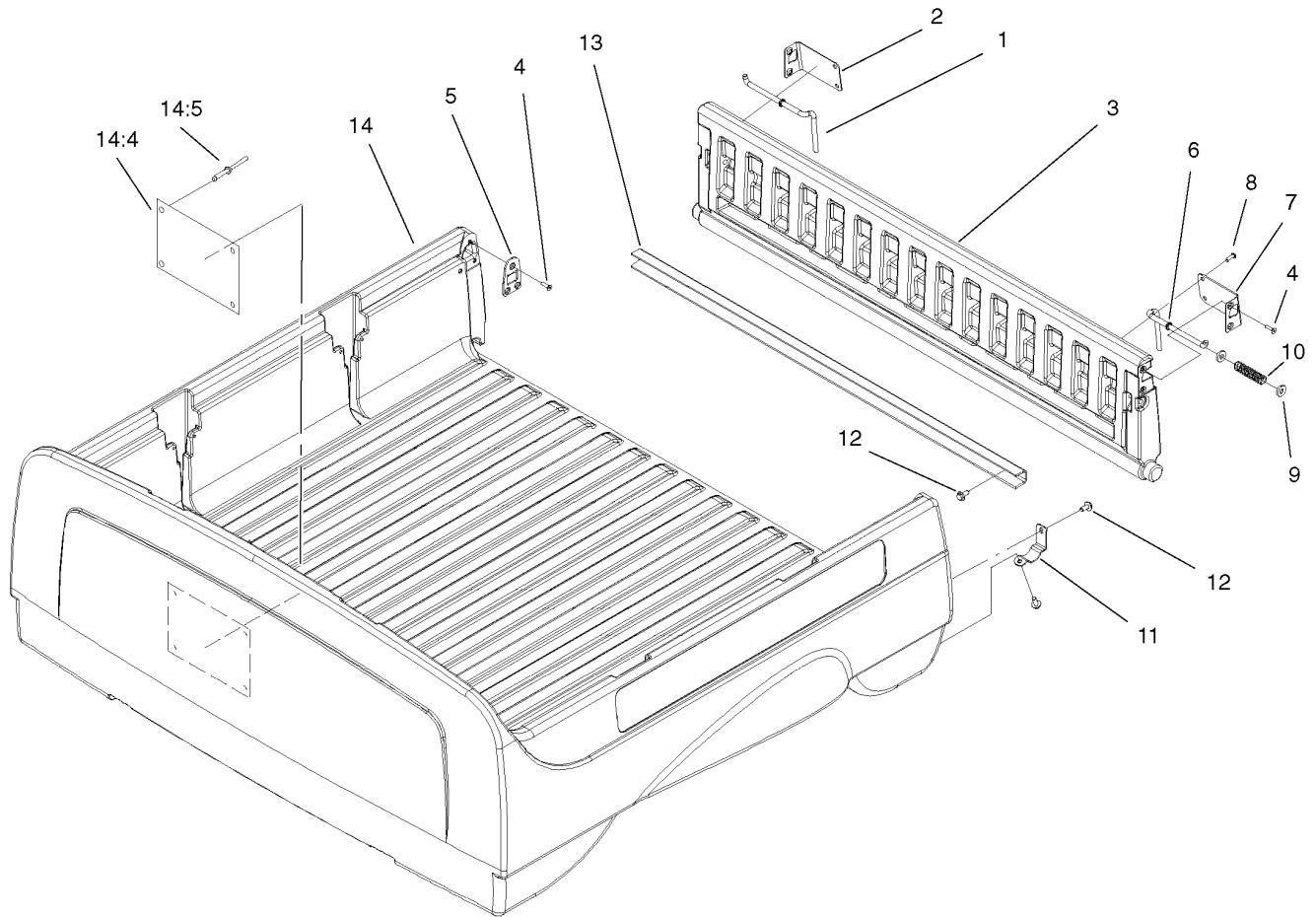
Ref	Part No.	Qty.	Description
1	94-2135	1	Gasket
2	32144-10	4	Screw-HWH
3	103118	1	Seal
4	99-7843	1	Sector-Gear
5	3256-42	1	Washer-Flat
6	251-82	2	Bearing-Ball
7	94-2218	1	Spacer-Shaft, Output
8	2844	1	Washer
9	98-3052	1	Screw-Locking, Thread
10	38-7820	2	Bearing-Ball
11	94-2217	1	Spacer-Shaft, Input
12	1-613235	1	Washer
13	98-3498	1	Screw-HH
14	302-5	1	Fitting-Grease
15	99-7656-03	1	Cover-Housing, Steering
16	99-7658	1	Housing-Steering
18	99-7650	1	Gear-Pinion
19	99-7657	1	Seal-Oil
20	99-7601-03	1	Arm-Pitman

--	--	--	--



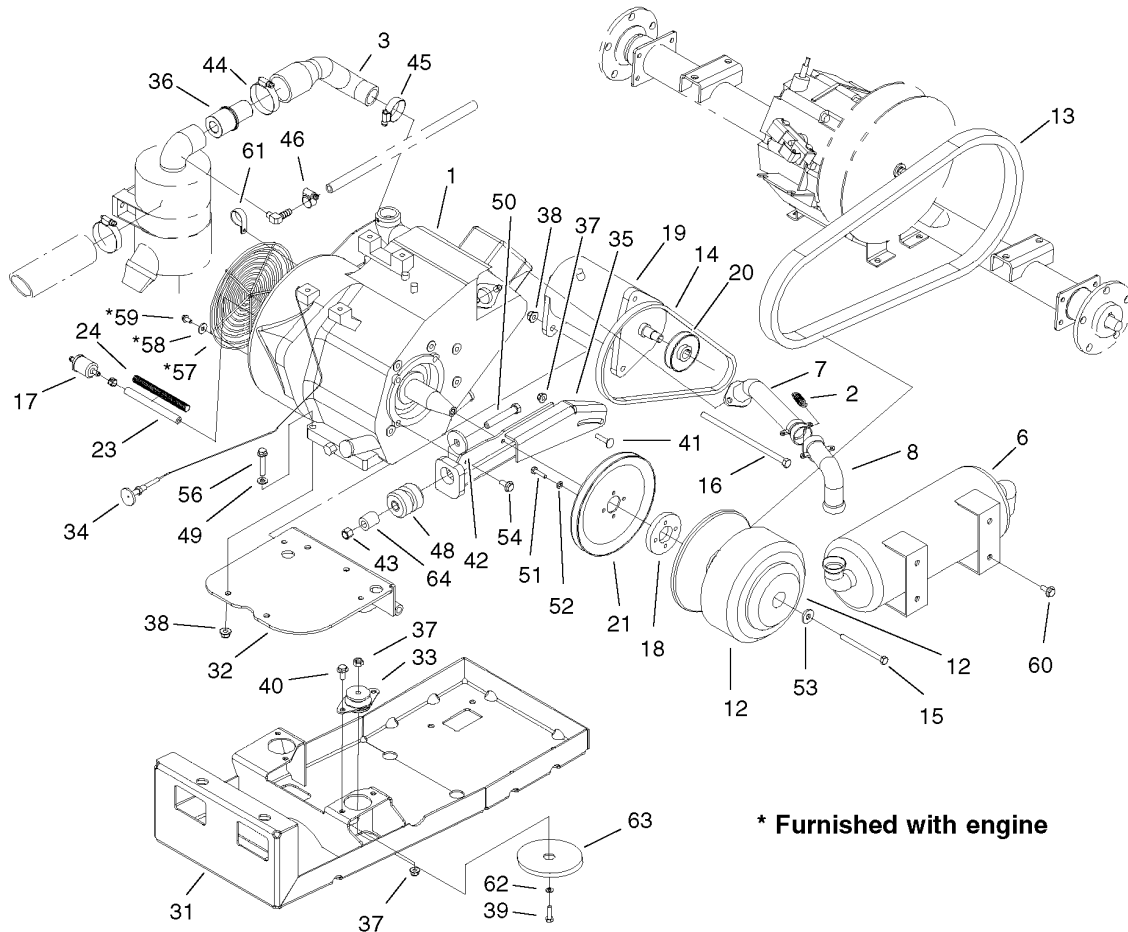
Box And Tailgate Installation Assembly

Ref	Part No.	Qty.	Description
1		1	Box And Tailgate ASM
2	99-7984	2	Knob-Soft Grip, Push-On
6	99-7337	1	Decal-Tailgate, Toro
14	3234-5	18	Screw-HHF
15	99-7309-03	1	RH Pivot Bracket ASM
17	99-7308-03	1	LH Pivot Bracket ASM
18	3234-11	4	Screw-HHF
19	99-7864-03	3	Brace-Box
21	99-7870	1	Shield-Heat
24	99-7895	1	Rod-Prop
25	99-7894	1	Bracket-Rod, Prop
26	3256-26	1	Washer-Flat
27	32112-14	1	Nut-Push
28	3234-17	2	Screw-HHF
29	99-7896	1	Bracket-U, Prop Rod
30	99-7745	1	Rod-Latch
31	5-7290	1	Spring-Tension
32	32148-7	2	Nut-Insert
33	99-7744-03	1	Bracket-Latch
34	99-7742-03	1	Hook-Latch, RH
35	104-8300	2	Nut-Flange, NI
36	104-6859	1	Shield-Heat
40	99-7959	2	Decal-Workman



Box And Tailgate Assembly

Ref	Part No.	Qty.	Description
1	99-7860	1	Rod-Latch, Right
2	99-7858	1	Bracket-Tailgate Latch, Right
3	99-7893	1	Tailgate ASM
4	99-7334	10	Screw
5	99-7852	2	Plate-Striker
6	99-7859	1	Rod-Latch, Left
7	99-7857	1	Bracket-Tailgate Latch, Left
8	99-7335	4	Screw
9	99-7861	4	Washer-Latch
10	61-8880	2	Spring
11	99-7286	2	Bracket-Pivot, Tailgate
12	3234-5	10	Screw-HHF
13	99-7867	1	Channel-Tailgate
14	99-7891	1	Box ASM
14:4	99-7954	1	Decal-No Riders
14:5	3290-415	4	Rivet

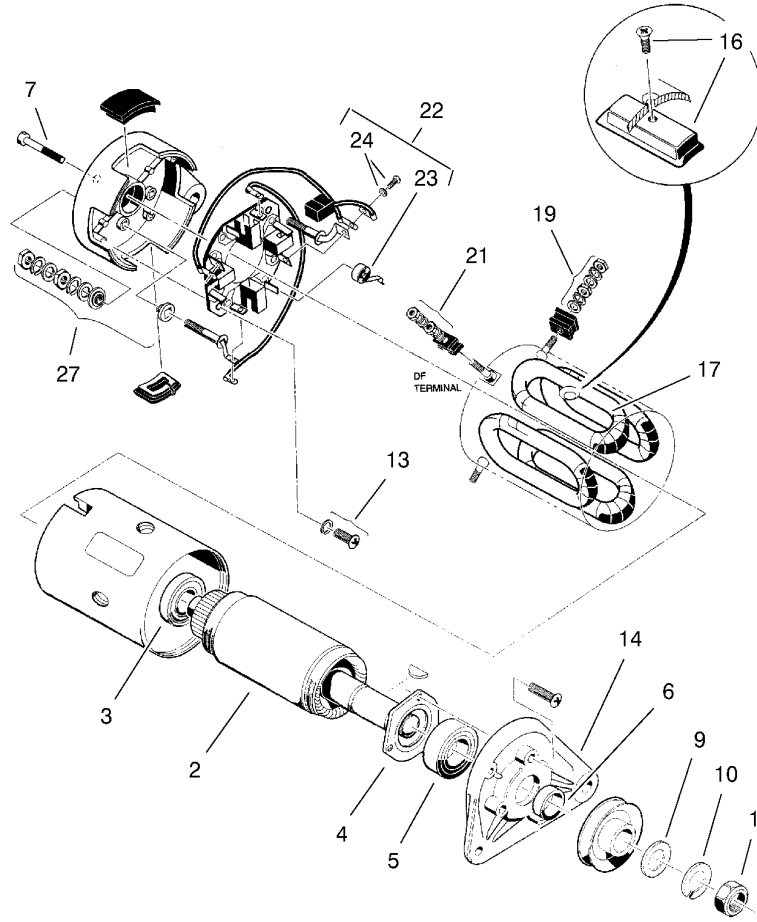


* Furnished with engine

Engine And Clutch Assembly

Ref	Part No.	Qty.	Description
②1		1	Engine-Kohler, Ch12 Pa-941521
2	104-6478	4	Spring-Coupler, Exhaust
3	104-6495	1	Hose-Intake
6	104-6510	1	Muffler
7	104-6511	1	Manifold
8	104-6512	1	Coupler-Exhaust
12	99-7103	1	Clutch-Drive
13	99-7143	1	Belt-Drive
14	99-7132	1	V-Belt-Starter
15	99-7200	1	Screw-HH
16	323-30	1	Screw-HH
17	94-2690	1	Filter-Fuel
18	99-7064	1	Spacer-Starter
19	99-7108	1	Generator-Starter
20	99-7130	1	Pulley-Starter
21	99-7131	1	Pulley-Engine
23	93-2229	1	Hose-Fuel
24	99-7377	1	Conduit-Line, Fuel
①25	99-7401	1	Cable-Positive
①26	99-7413	1	Harness-Wire
①27	99-7403	1	Cable-Negative
①29	99-7405	1	Cable-Negative
31	104-6521-03	1	Mount-Engine
32	104-6525-03	1	Base-Engine

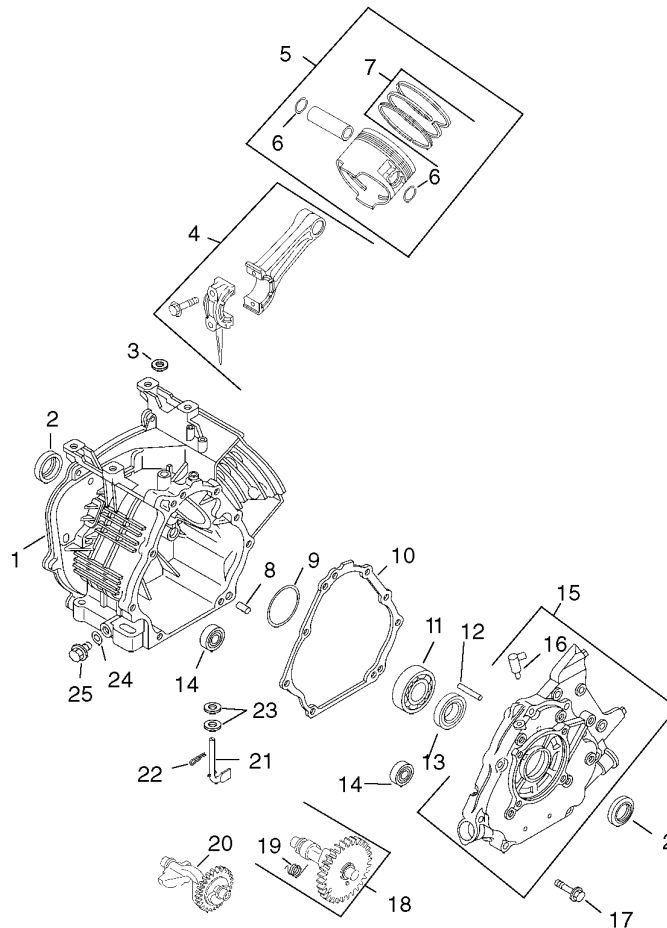
Ref	Part No.	Qty.	Description
33	104-6562	2	Mount-Iso
34	104-6507	1	Cable-Choke, Kohler
35	104-6516-03	1	Bracket-Starter
36	104-6531	1	Restrictor-Intake
37	104-8300	7	Nut-Flange, NI
38	104-8301	5	Nut-Flange, NI
39	322-11	2	Screw-HH
40	3234-5	8	Screw-HHF
41	3230-3	1	Screw-CARR
42	84-1560	1	Washer-Thrust
43	3296-48	1	Nut-Lock, NI
44	2412-130	1	Clamp-Hose
45	2412-3	1	Clamp-Hose
46	2412-36	1	Clamp-Hose
48	87-4970	1	Engine Mount ASM
49	3256-23	4	Washer-Flat
50	324-20	1	Screw-HH
51	321-6	4	Screw-HH
52	3253-3	4	Washer-Lock
53	5-0838	1	Washer
54	104-6560	2	Screw-HH
56	3234-19	4	Screw-HHF
60	3234-5	4	Screw-HHF
61	2412-89	1	Clamp



Starter Generator Assembly No. 99-7108

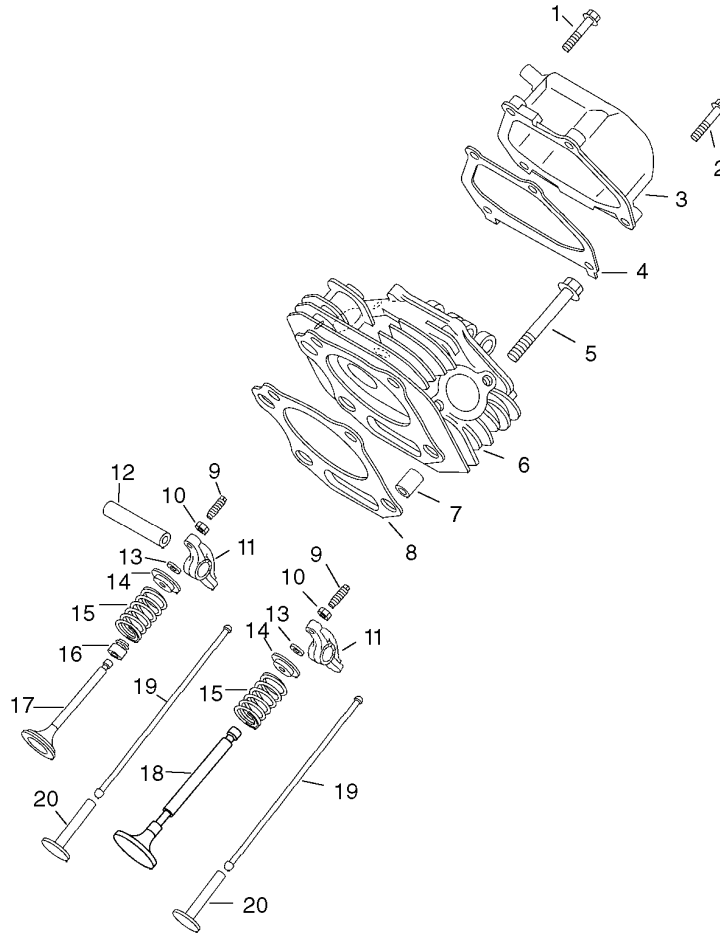
Ref	Part No.	Qty.	Description
2	104-1210	1	Armature Kit
3	104-1211	1	Bearing-Ball, Rear
4	104-1212	1	Retainer
5	104-1213	1	Bearing-Ball, Front
6	104-1214	1	Spacer
7	104-1215	2	Bolt
9	104-1216	1	Washer-Plain
10	104-1217	1	Washer-Spring
11	104-1218	1	Nut-Hex
13	104-1219	2	Set-Screw
14	104-1220	1	Bracket-Front
16	104-1221	1	Set-Pole And Screw
17	104-1222	1	Field Stator Coil ASM
19	104-1223	2	Set-Screw
21	104-1224	1	Set-Screw
22	104-1225	1	Brush Holder Kit
23	104-1226	4	Spring-Brush
24	104-1227	1	Brush And Screw Set
27	104-1228	2	Screw And Mold ASM

--	--	--	--



Crankcase Assembly Kohler CH12 PA-941521

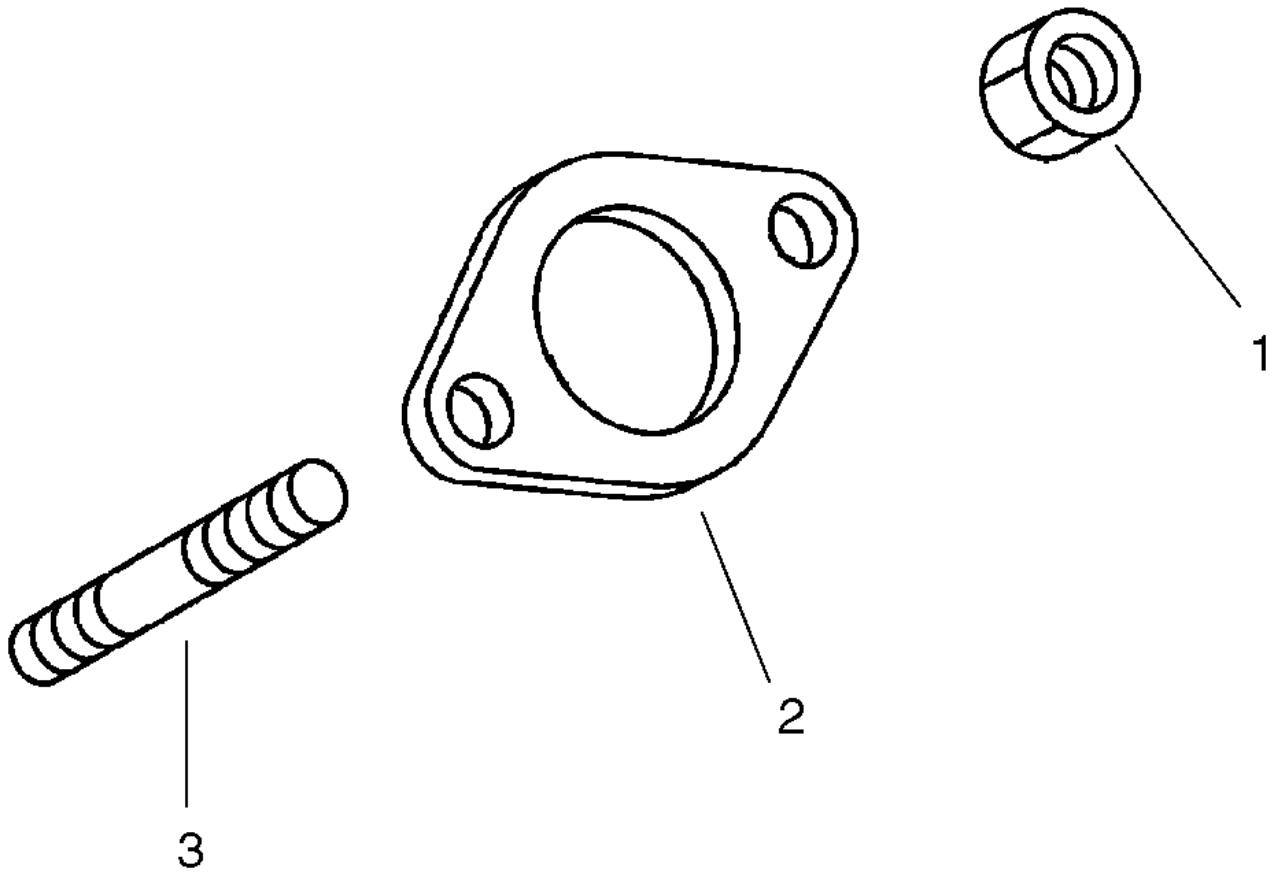
Ref	Part No.	Qty.	Description	Ref	Part No.	Qty.	Description
❶	63 561 01-S	1	Crankcase	❷	63 144 02-S	1	Shaft-Balance
❷	63 032 02-S	2	Seal-Oil	❸	63 144 01-S	1	Shaft-Cross, Governor
❸	63 032 03-S	1	Seal-Shaft, Governor Cross	❹	63 154 01-S	1	Clip
❹	63 067 01-S	1	Rod-Connecting	❺	63 468 03-S	2	Washer
❺	63 874 04-S	1	Set-Piston W/Ring (STD.)(Includes 6, 7)	❻	63 041 01-S	2	Gasket-Plug
❻	63 874 05-S	1	Set-Piston W/Ring (.25)	❼	63 139 01-S	2	Plug-Drain
❼	63 874 06-S	1	Set-Piston W/Ring (.50)				
❽	63 018 02-S	2	Retainer-Pin, Piston				
❾	63 108 01-S	1	Set-Ring (STD.)				
❿	63 108 02-S	1	Set-Ring (.25)				
⓫	63 108 03-S	1	Set-Ring (.50)				
⓬	63 380 04-S	2	Pin-Dowel				
⓭	63 422 01-S	1	Shim-Crankshaft				
⓮	63 041 07-S	1	Gasket-Plate, Closure				
⓯	63 030 01-S	1	Bearing				
⓰	63 144 03-S	1	Shaft-Governor				
⓱	63 030 03-S	1	Bearing				
⓲	63 030 02-S	2	Bearing				
⓳	63 009 12-S	1	Plate-Closure (Includes 16)				
⓴	63 155 01-S	1	Connector				
⓵	63 086 31-S	8	Screw-Plate, Closure				
⓶	63 012 01-S	1	Camshaft (Includes 19)				
⓷	63 089 01-S	1	Spring-Acr				



Head, Valve And Breather Assembly Kohler CH12 PA-941521

Ref	Part No.	Qty.	Description
❶	63 086 02-S	3	Screw-Cover, Valve
❷	63 086 44-S	1	Screw-Cover, Valve
❸	63 096 07-S	1	Cover-Valve
❹	63 041 04-S	1	Gasket-Cover, Valve
❺	63 086 01-S	4	Screw-Head, Cylinder
❻	63 318 01-S	1	Head-Cylinder
❼	63 380 03-S	2	Pin-Dowel
❽	63 041 02-S	1	Gasket-Head, Cylinder
❾	63 086 05-S	2	Screw-Adjusting, Valve
❿	63 100 02-S	2	Nut
⓫	63 186 01-S	2	Arm-Rocker
⓬	63 144 06-S	1	Shaft-Arm, Rocker
⓭	63 462 01-S	2	Keeper-Valve
⓮	63 173 01-S	2	Cap-Spring, Valve
⓯	63 089 05-S	2	Spring-Valve
⓰	63 032 01-S	1	Seal-Stem, Valve
⓱	63 017 01-S	1	Valve-Intake
⓲	63 016 01-S	1	Valve-Exhaust
⓳	63 411 01-S	2	Rod-Push
⓴	63 351 01-S	2	Lifter-Valve

--	--	--	--



Exhaust Assembly Kohler CH12 PA-941521

Ref	Part No.	Qty.	Description
1	63 100 03-S	2	Nut-Exhaust
2	63 041 06-S	1	Gasket-Exhaust
3	63 072 01-S	2	Stud-Exhaust
1	63 755 01-S	1	Set-Gasket

--	--	--	--

NOTES

NOTES

NOTES

