



# Wheel Spacer Kit

For Z Master Mower with 72in/182cm Cutting Unit

Model No. 112-8699

## Installation Instructions

**Note:** Determine the left and right sides of the machine from the normal operating position.

### Step

# 1

## Installing the Channel Plates

### Parts needed for this step:

4	Short spacer
4	Long spacer
8	Bolt (1/2 x 6 inches)
8	Square nut (1/2 inch)
8	Lock washer (1/2 inch)

### Procedure

1. Disengage the PTO, move the motion control levers to the neutral locked position and set the parking brake.
2. Stop the engine, remove the key, and wait for all moving parts to stop before leaving the operating position.
3. Loosen the lug nuts or bolts on the rear tires (Figure 1).
4. Raise the machine so the rear tires are off the ground and support the machine with jack stands.
5. Remove the lug nuts or bolts and rear tires from the machine (Figure 1).
6. Remove the brake band bolts and remove the brake band from the wheel hub (Figure 1).
7. Remove the cotter pin from the axle nut and remove the axle nut and washer (Figure 1).
8. Pull the wheel hub from the wheel motor (Figure 1). This may require the use of a pulley puller to remove it.

Make sure the woodruff key remains with the wheel motor shaft.

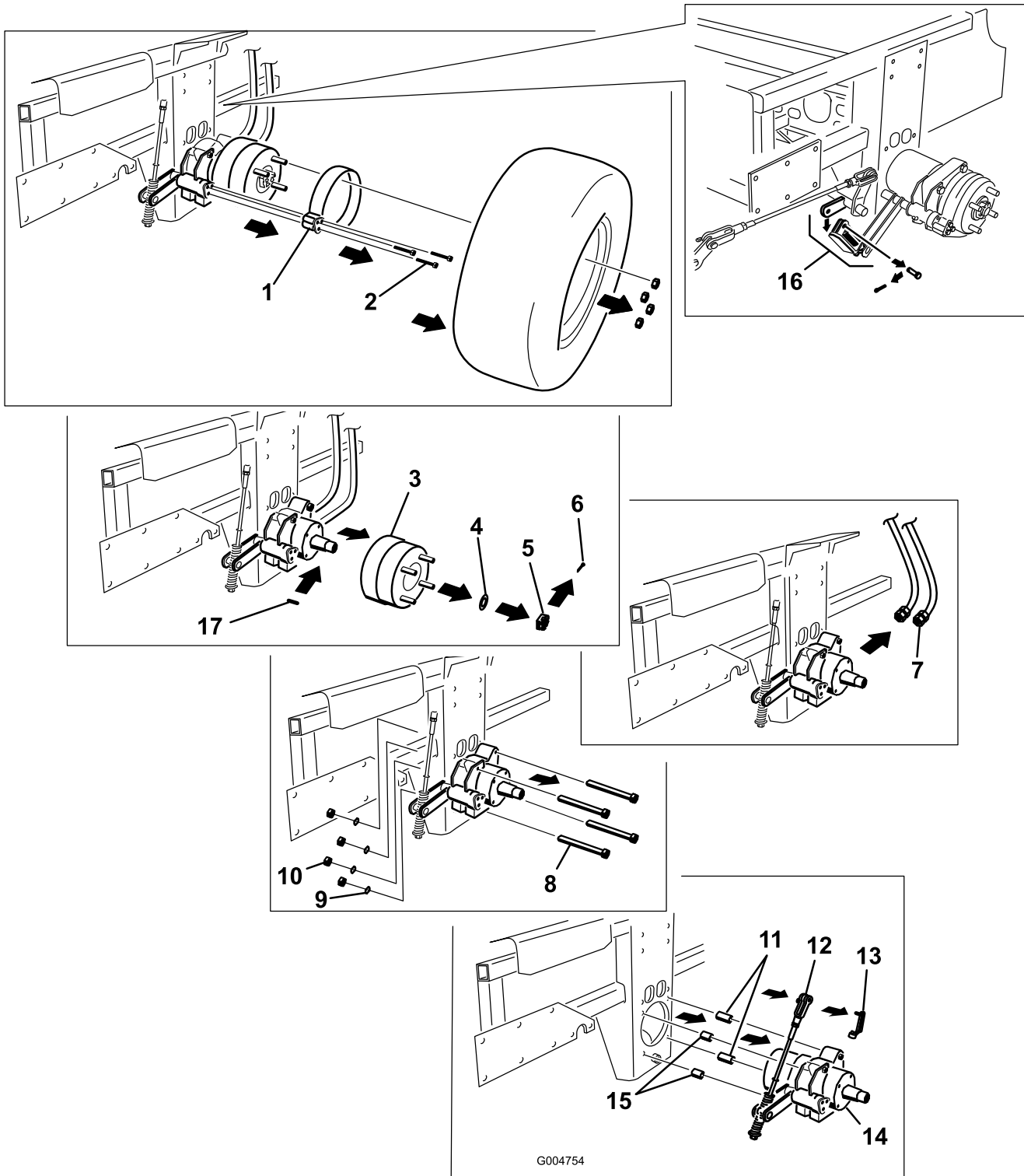
9. Remove the hydraulic lines connected to the wheel motor (Figure 1). Raise the ends above

the hydraulic tank to prevent the fluid running out and plug the hydraulic lines.

10. Remove the retainer pin from the yoke at the top of the brake linkage (Figure 1).

**Note:** Remember the position of the spacers. The long spacers are used for the rear bolts and the short spacers are used for the front bolts.

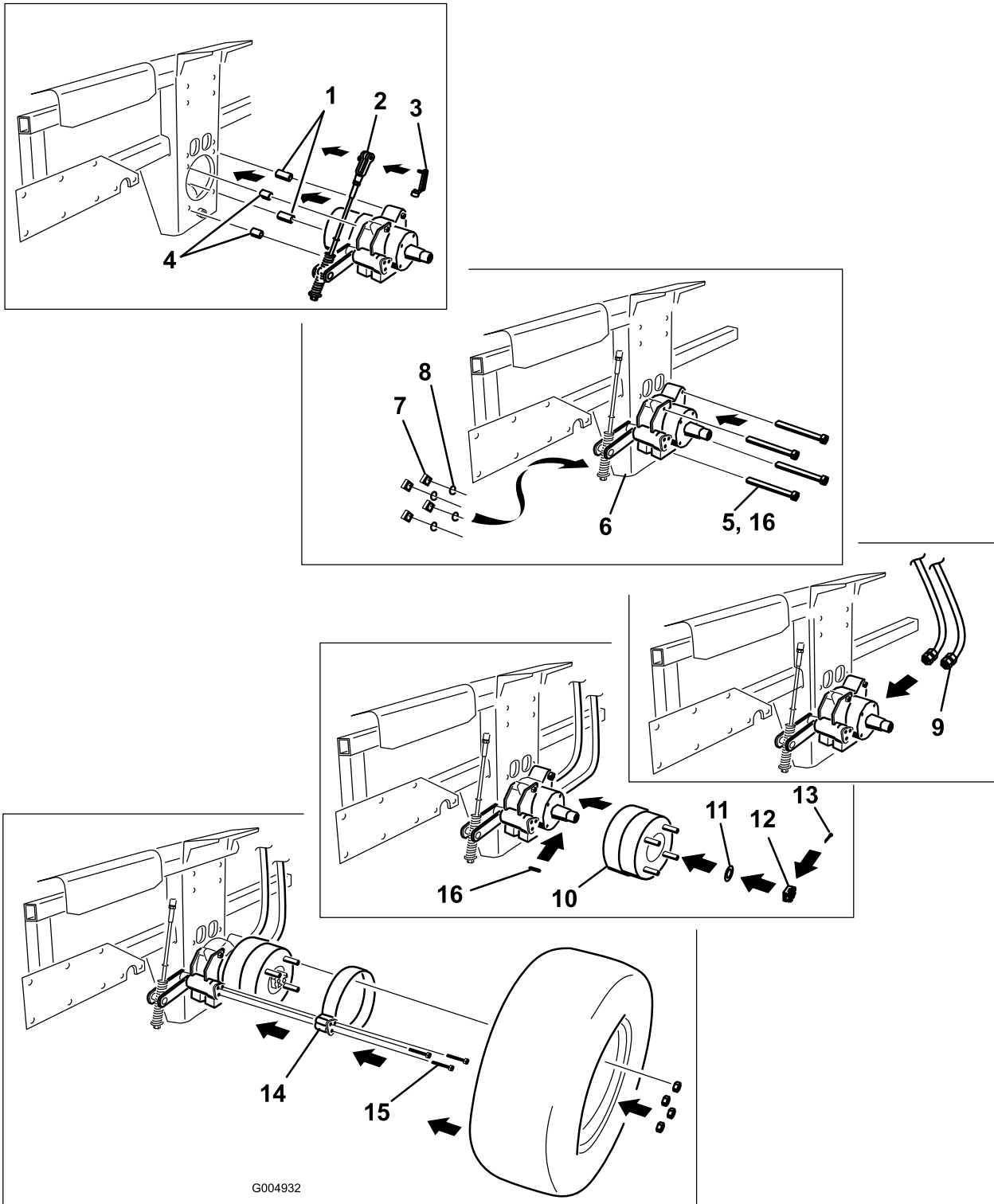
11. Remove the bolts, spacers, washers and nuts holding the wheel motor to the frame and remove the wheel motor and brake assembly (Figure 1). Discard the spacers.
12. Install the wheel motor and brake assembly to the frame with the 2 new short and long spacers, 4 square nuts (1/2 inch), 4 lock washers (1/2 inch) and 4 bolts (1/2 x 6 inches) (Figure 2). Ensure the spacers are installed in the correct position.
13. Torque the bolts to 75 ft-lb (102 N·m).
14. Connect the hydraulic lines to the wheel motor (Figure 2).
15. Install the wheel hub to the wheel motor with the woodruff key, washer, and slotted nut (Figure 2).



G004754

**Figure 1**

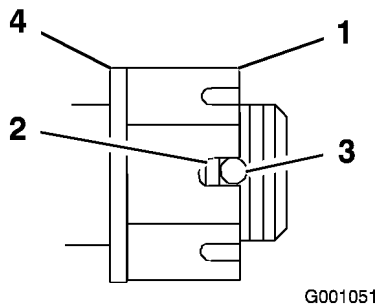
- |                     |                      |  |                                     |
|---------------------|----------------------|--|-------------------------------------|
| 1. Brake band       | 6. Cotter pin        | 11. Long spacer                          | 16. Z597 Diesel brake linkage shown |
| 2. Brake band bolts | 7. Hydraulic lines   | 12. Yoke at the top of the brake linkage | 17. Woodruff key                    |
| 3. Wheel hub        | 8. Wheel motor bolts | 13. Retainer pin                         |                                     |
| 4. Washer           | 9. Washers           | 14. Wheel motor                          |                                     |
| 5. Slotted nut      | 10. Nuts             | 15. Short spacer                         |                                     |



**Figure 2**

- |   |                            |                    |                      |
|---|----------------------------|--------------------|----------------------|
| 1. New long spacer                      | 5. Bolt (1/2 x 6 inches)   | 9. Hydraulic lines | 13. Cotter pin       |
| 2. Yoke at the top of the brake linkage | 6. Channel                 | 10. Wheel hub      | 14. Brake band       |
| 3. Retainer pin                         | 7. Square nut (1/2 inch)   | 11. Washer         | 15. Brake band bolts |
| 4. New short spacer                     | 8. Lock washers (1/2 inch) | 12. Slotted nut    | 16. Woodruff key     |

16. Torque the slotted nut to 125 ft-lb (170 N·m) (Figure 3).
17. Check the distance from bottom of slot in nut to inside edge of hole. Two threads or less should be showing (Figure 3).
18. If more than two threads are showing remove nut and install washer between hub and nut.
19. Tighten the nut until the next set of slots line up with the hole in the shaft (Figure 3).
20. Replace the cotter pin (Figure 2).



**Figure 3**

- |                                |                           |
|--------------------------------|---------------------------|
| 1. Slotted Nut                 | 3. Hole in threaded shaft |
| 2. Two threads or less showing | 4. Washer (if needed)     |

- 
21. Install the tire with wheel nuts or bolts to the machine (Figure 1).

Torque the wheel nuts to 95 ft-lb (128 N·m).