



Mow Block Manifold Kit

Reelmaster® 5500-D, 6500-D and 6700-D Tractors

Model No. 112-6554

Parts Catalog

Ordering Replacement Parts

To order replacement parts, please supply the part number, the quantity, and the description of each part desired.

Understanding Reference Numbers

Each identified part in an illustration has a reference number. The reference number for a part also appears in the parts list, along with other information about the part.

This catalog uses two special reference number formats, one to indicate parts in a service assembly and another to indicate the quantity of a given part in an illustration.

Service Assembly Reference Numbers

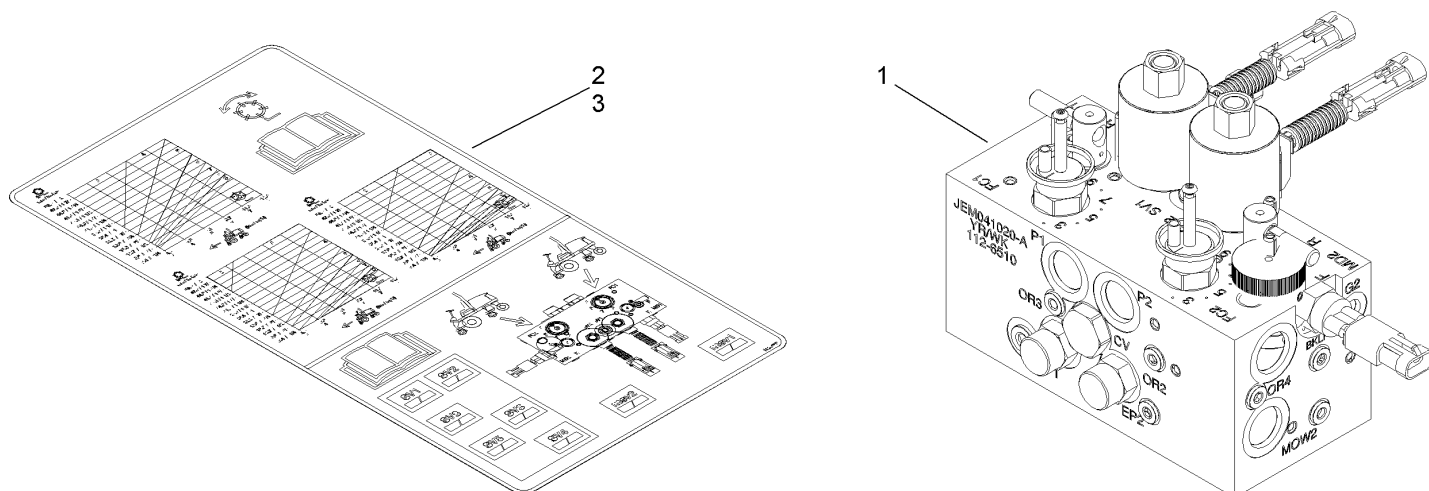
Parts in service assemblies have reference numbers in the form a:b. The a represents the reference number of the entire service assembly and the b represents a sequential number unique to each part within the service assembly.

For example, a wheel assembly might be identified by reference number 6, the tire by 6:1, the valve by 6:2, and the wheel by 6:3. When you order the assembly identified by reference number 6, you receive all parts identified by reference numbers 6:1, 6:2, and 6:3. However, you may also order any part individually. Reference numbers of this type appear in illustrations and in part lists.

Reference Numbers Indicating Quantity

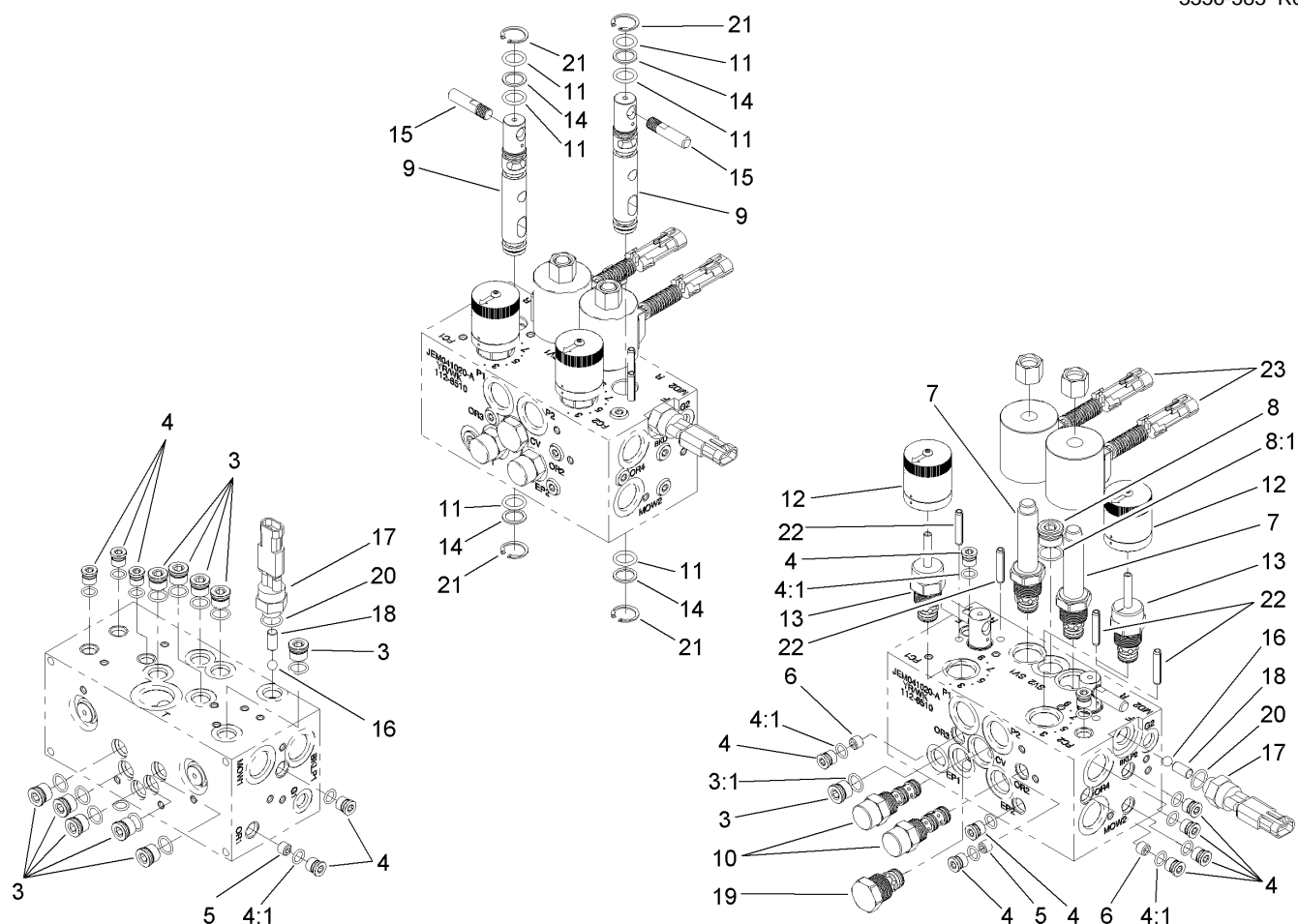
In an illustration, if a reference number indicates more than one part, the reference number has the form nX y. The n represents the quantity of the part, the X is the multiplication symbol, and the y represents the reference number.

For example, in an illustration, the reference number 2X 37 means that two of the parts identified by reference number 37 are indicated.



Mow Block Manifold Assembly

Ref	Part No.	Qty.	Description
1	112-6510	1	Manifold-Block, Mow
2	112-6555	1	Decal-Solenoid Information Ce
3	112-6556	1	Decal-Solenoid Information, Ce



Hydraulic Manifold Assembly No. 112-6510

Ref	Part No.	Qty.	Description	Ref	Part No.	Qty.	Description
3	106-1026	11	Plug-HYD	20	110-8757	2	O-Ring
3:1	237-42	1	O-Ring	21	112-6532	4	Ring-Retaining
4	106-1025	14	Plug-HYD	22	112-6531	4	Pin-Spring
4:1	237-78	1	O-Ring	23	112-6530	2	Coil ASM
5	112-6538	2	Orifice				
6	112-6537	2	Orifice				
7	110-8768	2	Valve-Relief, Solenoid				
7:1	110-6316	1	Seal Kit (Not Illustrated)				
8	106-1027	1	Plug-HYD				
8:1	237-79	1	O-Ring				
9	112-6536	2	Spool				
10	110-8890	2	Element-Logic				
10:1	110-8773	1	Seal Kit (Not Illustrated)				
11	112-6535	6	O-Ring				
12	110-8767	2	Rotary Handle ASM				
13	110-8769	2	Valve-Control, Manual Flow				
13:1	110-2633	1	Seal Kit (Not Illustrated)				
14	112-6534	4	Ring-Back Up				
15	110-8758	2	Handle-Spool				
16	110-8862	2	Decal-Serial Plate				
17	72-4320	2	Switch-Ball				
18	112-6533	2	Pin-Dowel				
19	110-8759	1	Valve-Check				
19:1	110-8772	1	Seal Kit (Not Illustrated)				

