



GT2300 Garden Tractor

Model No. 14AK81RK744 - 1A186H30000 and up.

Parts Catalog

Ordering Replacement Parts

To order replacement parts, please supply the part number, the quantity, and the description of each part desired.

Understanding Reference Numbers

Each identified part in an illustration has a reference number. The reference number for a part also appears in the parts list, along with other information about the part.

This catalog uses two special reference number formats, one to indicate parts in a service assembly and another to indicate the quantity of a given part in an illustration.

Service Assembly Reference Numbers

Parts in service assemblies have reference numbers in the form a:b. The a represents the reference number of the entire service assembly and the b represents a sequential number unique to each part within the service assembly.

For example, a wheel assembly might be identified by reference number 6, the tire by 6:1, the valve by 6:2, and the wheel by 6:3. When you order the assembly identified by reference number 6, you receive all parts identified by reference numbers 6:1, 6:2, and 6:3. However, you may also order any part individually. Reference numbers of this type appear in illustrations and in part lists.

Reference Numbers Indicating Quantity

In an illustration, if a reference number indicates more than one part, the reference number has the form nX y. The n represents the quantity of the part, the X is the multiplication symbol, and the y represents the reference number.

For example, in an illustration, the reference number 2X 37 means that two of the parts identified by reference number 37 are indicated.

Contents

Description	Page	Description	Page
Front and Rear Wheel Assembly 3	Crankcase Assembly Kohler SV735-0011 24
Deck Lift Arm Assembly 4	Oil Pan and Lubrication Assembly Kohler SV735-0011 25
Steering Shaft and Front Axle Assembly 5	Head, Valve and Breather Assembly Kohler SV735-0011 26
Frame and Battery Assembly 6	Ignition and Electrical Assembly Kohler SV735-0011 27
Frame and Battery Assembly 7	Blower Housing and Baffle Assembly Kohler SV735-0011 28
Fuel Tank and Hood Assembly 8	Starting System Assembly Kohler SV735-0011 29
Brake and Traction Assembly 10	Fuel System Assembly Kohler SV735-0011 30
Seat Assembly 11	Engine Control Assembly Kohler SV735-0011 31
Transmission, Belt and Pulley Assembly 12	Air Intake and Filtration Assembly Kohler SV735-0011 32
Transmisson Assembly No. 112-0914 14	Exhaust Stud, Gasket and Decal Assembly Kohler SV735-0011 33
Transmisson Assembly No. 112-0914 (Continued) 16	Attachments and Accessories List 34
Deck Assembly 18		
Spindle Assembly No. 112-0915 19		
Deck Roller, Belt, Cover and Pulley Assembly 20		
Electric Clutch Assembly 21		
Muffler Assembly 22		
Crankshaft Assembly Kohler SV735-0011 23		

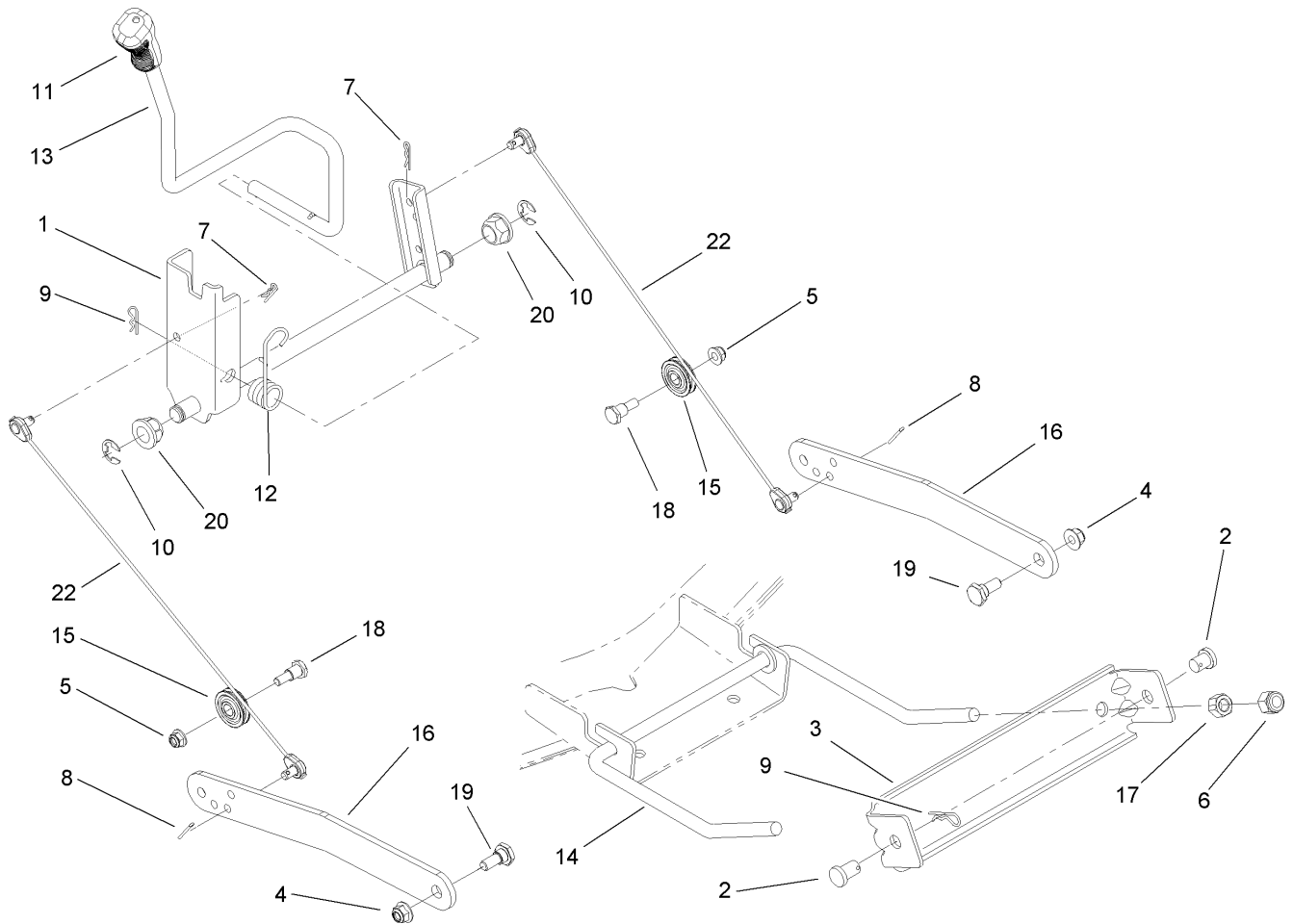
Part Description Abbreviations

Part descriptions in this catalog may include the following abbreviations.

AR. as required	HYD. hydraulic
ASM. assembly	LH. left hand
BBC. blade brake clutch	NI. nylon insert
CARR. carriage	NPTF. national pipe thread fine
DEG. degrees	PFH. phillips flat head
EXT. external	PPH. phillips pan head
FH. flat head	PPHTF. phillips pan head thread forming
GA. gauge	PRH. phillips round head
HD. heavy-duty	PTH. phillips truss head
HF. hex flange	PTO. power-take-off
HH. hex head	RH. right hand
HHF. hex head flange	ROPS. roll-over protection system
HHFTF. hex head flange thread forming	SFH. slotted fillister head
HJ. hex jam	SHH. slotted hex head
HLH. hex lag head	SHWH. slotted hex washer head
HOC. height-of-cut	SPH. slotted pan head
HSBH. hex socket button head	SQH. square head
HSFH. hex socket flat head	SRH. slotted round head
HSH. hex socket head	STD. standard
HWH. hex washer head	TAP. self tapping
HWHTF. hex washer head thread forming	TTH. torx truss head

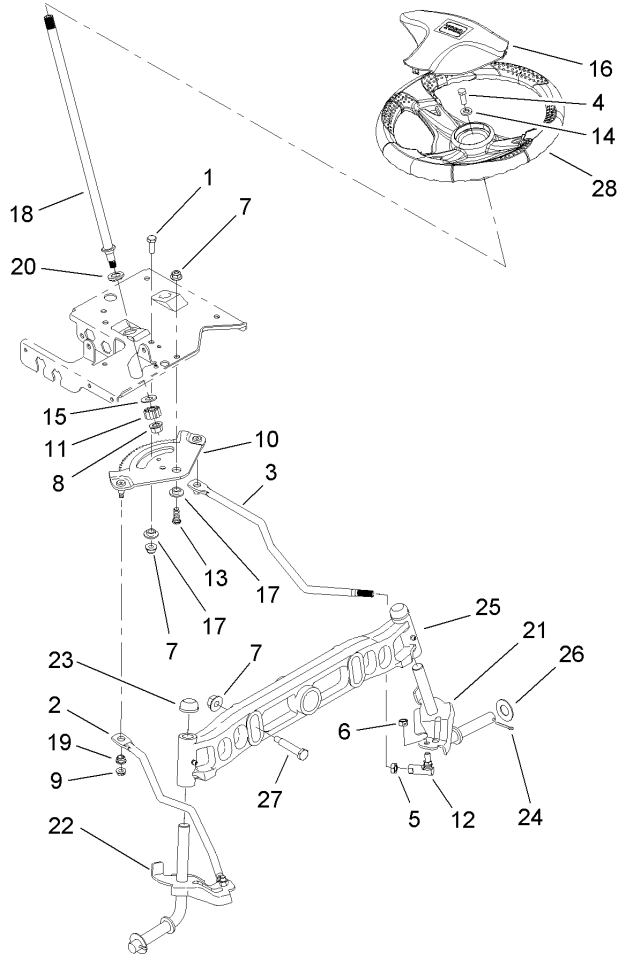
Footnotes

- | | |
|--|--------------------------------------|
| ❶ Not illustrated | ❷ Not serviced separately |
| ❸ Obtain from your local Kohler dealer | ❹ Obtain from your local Toro dealer |
| ❺ For Service with Keihin Carburetors | ❻ For Service of Nikki Carburetors |



Deck Lift Arm Assembly

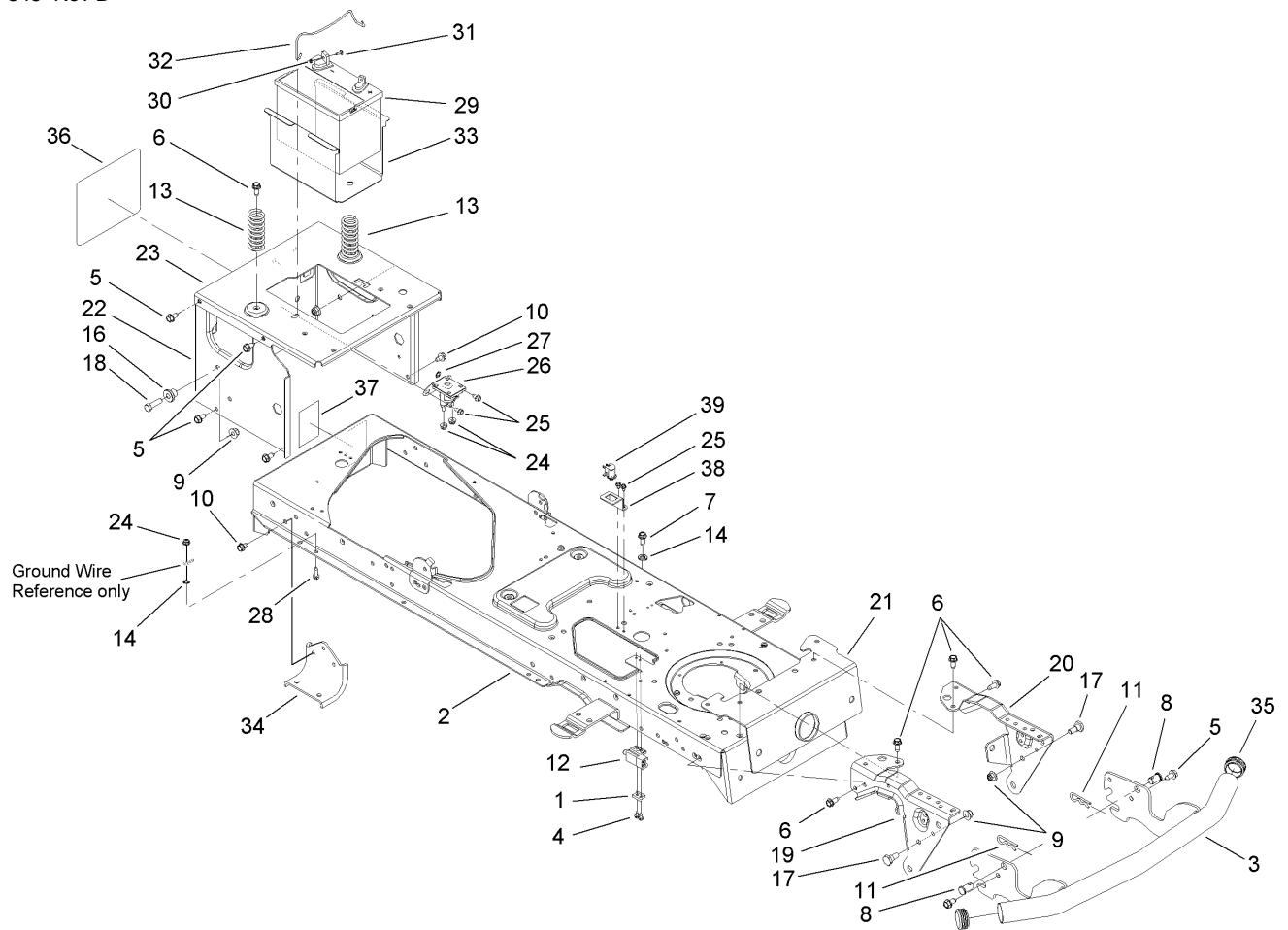
Ref	Part No.	Qty.	Description
1	112-0852	1	Lift Shaft ASM
2	112-0376	2	Pin-Bracket, Lift
3	112-0707	1	Bracket-Stabilizer
4	112-0668	2	Nut-Lock, Flange
5	112-0650	2	Nut-Lock, Flange
6	112-0476	2	Nut-Lock, Hex (Nylon)
7	112-0459	2	Pin-Cotter
8	112-0568	2	Pin-Cotter
9	112-0394	3	Pin-Hair
10	112-0586	2	Ring-E
11	112-0585	1	Grip-Handle
12	112-0477	1	Spring-Torsion
13	112-0674	1	Handle-Lift
14	112-0497	1	Rod-Front, Adjust
15	112-0502	2	Pulley-Roller
16	112-0569	2	Arm-Lift
17	112-0458	2	Nut-Hex
18	112-0443	2	Bolt-Shoulder
19	112-0442	2	Bolt-Shoulder
20	112-0347	2	Bearing-Flange
22	112-0374	2	Cable-Lift



Steering Shaft and Front Axle Assembly

Ref	Part No.	Qty.	Description
1	112-0492	1	Screw-HH
2	112-0355	1	Link-Drag, RH
3	112-0346	1	Link-Drag, LH
4	112-0473	1	Screw-HH
5	112-0493	2	Nut-Jam
6	112-0483	2	Nut-Hex, Lock
7	112-0668	4	Nut-Lock, Flange
8	112-0859	1	Nut-Lock, Flange
9	112-0511	2	Nut-Lock, Flange
10	112-0862	1	Gear-Steering
11	112-0863	1	Gear-Pinion, Steering
12	112-0917	2	Ball Joint ASM
13	112-0631	1	Screw-HH
14	112-0924	1	Washer-Flat
15	112-0925	1	Washer-Flat
16	112-0341	1	Cover-Wheel, Steering
17	112-0881	2	Spacer-Shoulder
18	112-5804	1	Shaft-Steering
19	112-0929	2	Bushing
20	112-0930	1	Bearing-Flange, Hex
21	112-0687	1	LH Axle ASM
22	112-0405	1	RH Axle ASM
23	112-0323	2	Cap
24	112-0519	2	Pin-Cotter

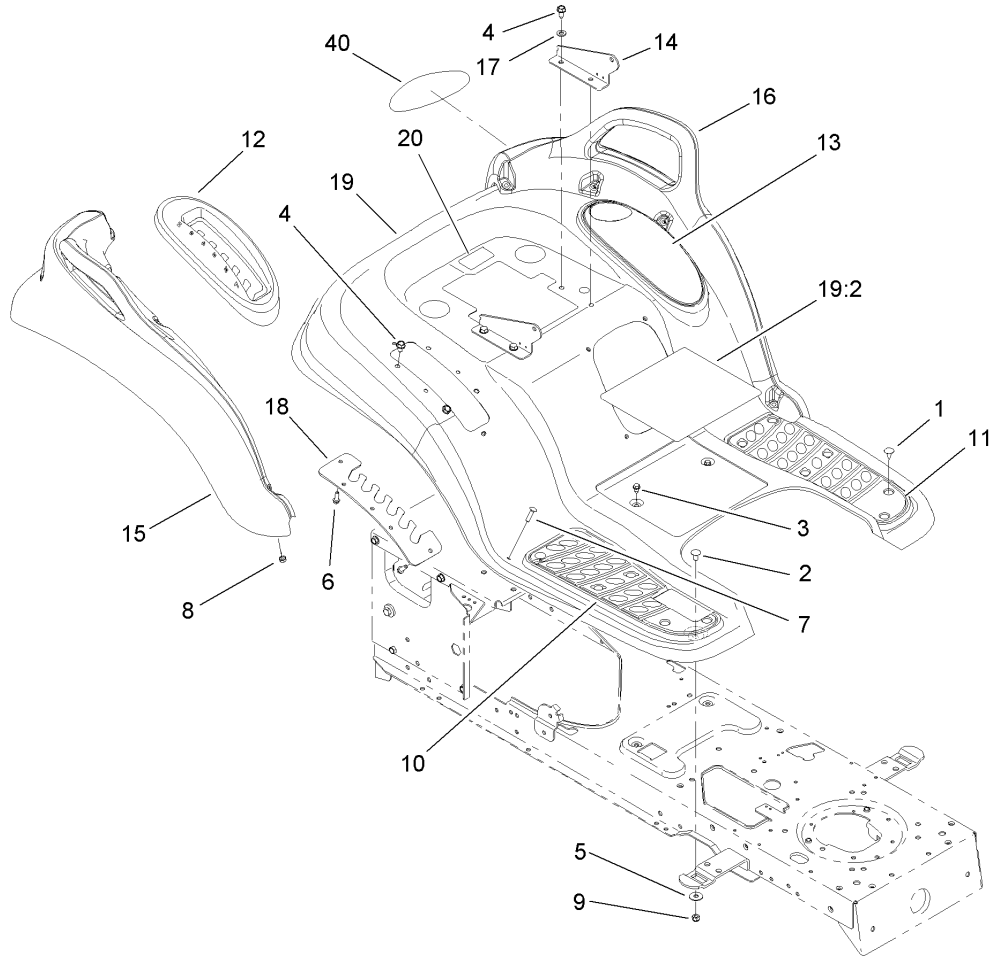
Ref	Part No.	Qty.	Description
25	112-0416	1	Axle-Pivot, Front
26	112-0396	2	Washer-Flat
27	112-0486	2	Bolt-Shoulder
28	112-0438	1	Wheel-Steering, Softgrip



Frame and Battery Assembly

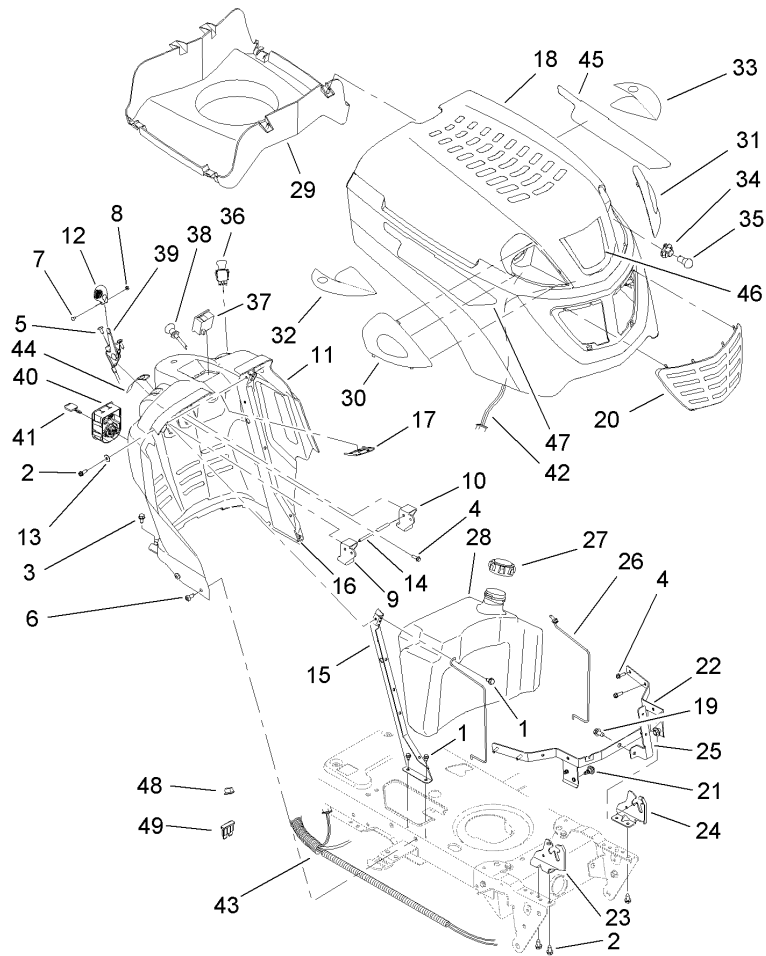
Ref	Part No.	Qty.	Description
1	112-0671	1	Plate-Switch
2	112-0705	1	Lower Frame ASM
3	112-0954	1	Bumper ASM
4	112-0651	1	Screw-HH, TAP
5	112-0472	1	Screw-HH, TAP
6	112-0395	1	Screw-HWH
7	112-0659	1	Screw-HWH
8	112-0376	1	Pin-Bracket, Lift
9	112-0668	1	Nut-Lock, Flange
10	112-0676	1	Screw-TAP
11	112-0394	1	Pin-Hair
12	112-0455	1	Switch-Interlock
13	112-0501	1	Spring-Compression
14	112-0703	1	Washer-Lock, External
16	112-0661	1	Spacer-Shoulder
17	112-0565	1	Bolt-Shoulder
18	112-0557	1	Screw-HH
19	112-0620	1	Bracket-Pivot, Support
20	112-0610	1	Bracket-Pivot, Support
21	112-0640	1	Bracket-Pivot, Bar
22	112-0728	1	Frame-Upper
23	112-0647	1	Bracket-Frame, Seat
24	112-0636	1	Nut-Lock, Flange
25	112-0524	1	Screw-HWHTF

Ref	Part No.	Qty.	Description
26	112-0309	1	Solenoid-12V
27	112-0703	1	Washer-Lock, External
28	112-0587	1	Screw-HH, TAP
29	112-0425	1	Battery-245 Cca (Dry Flat Top)
30	112-5805	1	Nut-Sems
31	112-0479	1	Bolt-CARR
32	112-0581	1	Rod-Holddown, Battery
33	112-5806	1	Tray-Battery
34	112-0710	1	Bracket-Axle
35	112-5807	1	Bumper-Cap
36	112-1284	1	Decal-Toro
37	112-1275	1	Decal-Bypass
38	112-3737	1	Bracket-Switch, Parking Brake
39	112-0441	1	Switch-Mount, Snap



Frame and Battery Assembly

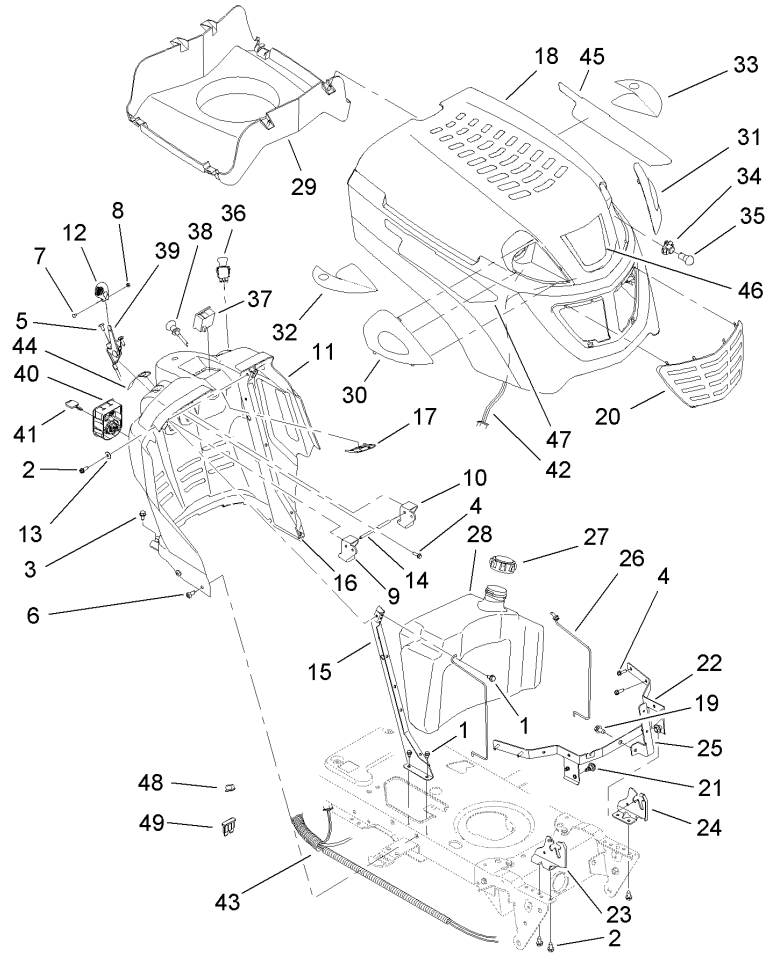
Ref	Part No.	Qty.	Description
1	112-0549	1	Clip-Ratchet, Fastener
2	112-0426	1	Bolt-CARR
3	112-0524	1	Screw-HWHTF
4	112-0556	1	Screw-HWH
5	112-0582	1	Washer-Flat
6	112-0509	1	Screw-HH, TAP
7	112-0907	1	Screw-CARR
8	112-0546	1	Nut-Sems
9	112-0650	1	Nut-Lock, Flange
10	112-0540	1	Pad-Foot, RH
11	112-0545	1	Pad-Foot, LH
12	112-0869	1	Cover-Lever, Lift
13	112-0870	1	Cover (W/Cup Holder)
14	112-5808	1	Bracket-Seat
15	112-0871	1	Flare-Fender, RH
16	112-0872	1	Flare-Fender, LH
17	112-0517	1	Washer-Lock, External
18	112-0629	1	Bracket-Adjusting, Lift
19	112-5861	1	Fender And Decal ASM
19:2	112-1261	1	Decal-Danger
20	112-1260	1	Decal-Service (Toro Hotline)
40	112-5873	1	Reflector



Fuel Tank and Hood Assembly

Ref	Part No.	Qty.	Description
1	112-0524	1	Screw-HWHTF
2	112-0587	1	Screw-HH, TAP
3	112-0472	1	Screw-HH, TAP
4	112-0509	1	Screw-HH, TAP
5	112-0550	1	Screw-TAP
6	112-0563	1	Screw-TAP
7	112-0478	1	Screw-PTH
8	112-0515	1	Nut-Hex
9	112-0526	1	Lever-Cruise
10	112-0580	1	Lever-Brake
11	112-0536	1	Dash-PTO, Electric
12	112-0474	1	Knob-Control
13	112-0485	1	Washer-Spring
14	112-0604	1	Rod-Lever, Bent
15	112-0583	1	Support-Dash, RH
16	112-0591	1	Support-Dash, LH
17	112-5809	1	Bracket-PTO
18	112-0444	1	Hood
19	112-0906	1	Screw-HWHTF
20	112-0381	1	Grill
21	112-0597	1	Bolt-Shoulder
22	112-0555	1	Bracket-Pivot
23	112-0727	1	Bracket-Pivot, Hood (RH)
24	112-0726	1	Bracket-Pivot, Hood (LH)

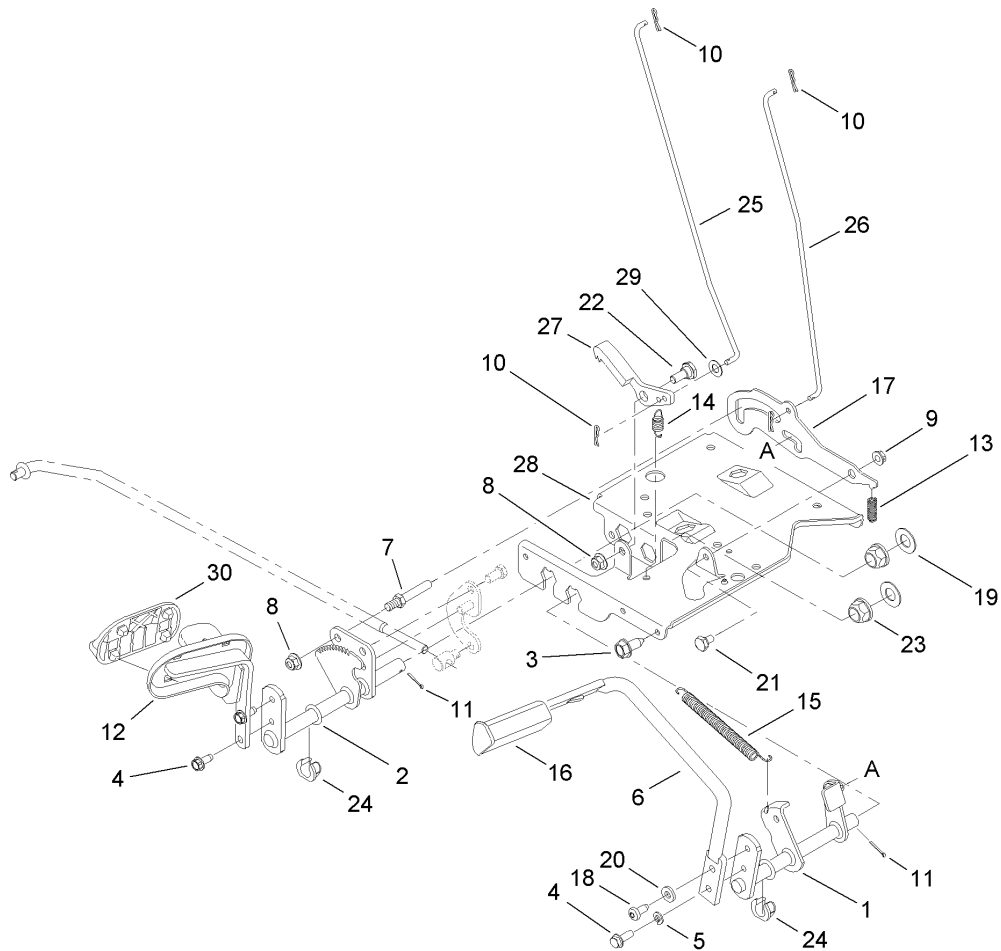
Ref	Part No.	Qty.	Description
25	112-3736	1	Bracket-Support, Hood
26	112-0678	1	Rod-Support
27	112-0321	1	Cap-Fuel
28	112-0414	1	Tank-Fuel, 3 Gallon
29	112-5814	1	Plenum-Hood
30	112-0447	1	Lens-RH
31	112-0446	1	Lens-LH
32	112-5810	1	Reflector-RH
33	112-5811	1	Reflector-LH
34	112-0408	1	Socket-Headlight
35	112-0402	1	Lamp-12V, Miniature
36	112-0411	1	Switch-Electric, PTO
37	112-0336	1	Meter-Indicator, Systems
38	112-0310	1	Cable Control ASM (W/Choke Knob)
39	112-0403	1	Cable-Throttle
40	112-0865	1	Module-Switch, Ignition
41	112-0312	1	Key-Ignition
42	112-0480	1	Harness-Headlight
43	112-5815	1	Harness-Wiring
44	112-1272	1	Decal-Throttle, Dash
45	112-1278	1	Decal-Hood, Left Side
46	112-1285	1	Decal-Hood, Toro
47	112-1279	1	Decal-Hood, Right Side



Fuel Tank and Hood Assembly (continued)

Ref	Part No.	Qty.	Description
48	112-5921	1	Relay
49	112-5943	1	Fuse-20 Amp

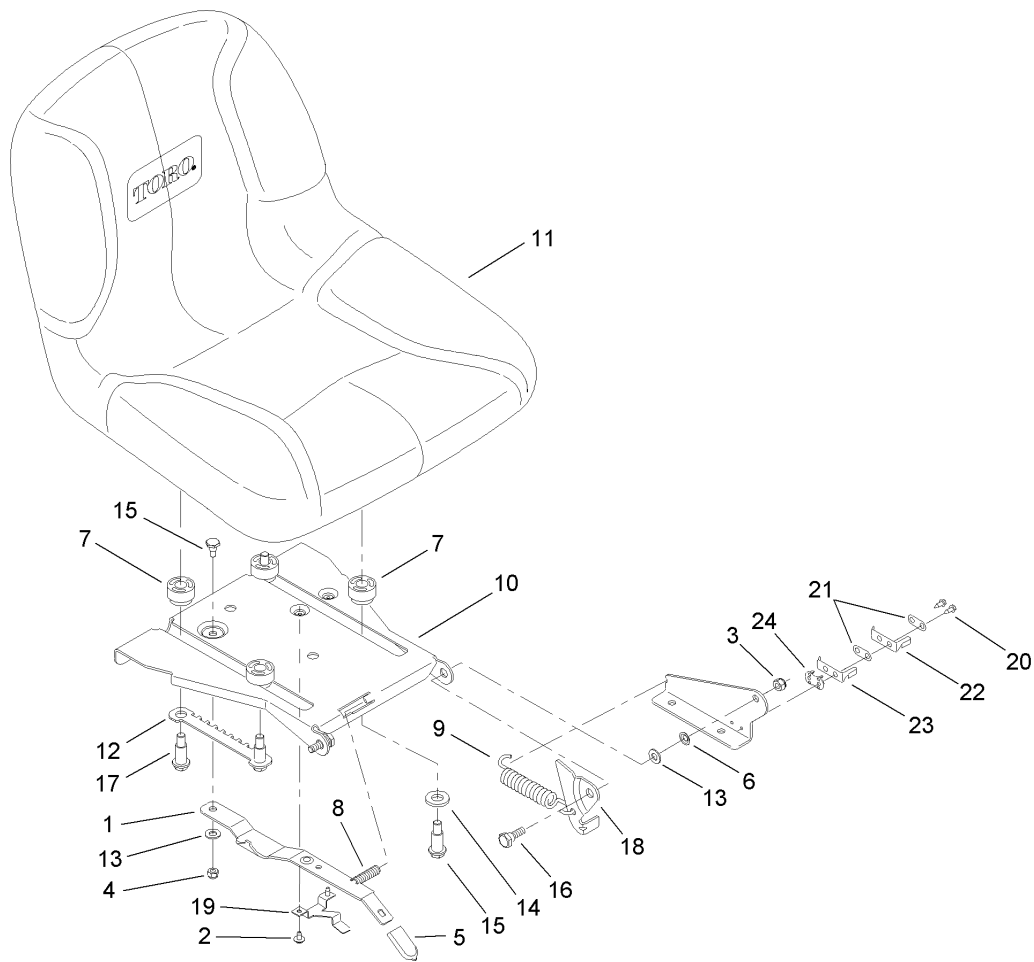
--	--	--	--



Brake and Traction Assembly

Ref	Part No.	Qty.	Description
1	112-0648	1	Brake Control ASM
2	112-0850	1	Control ASM
3	112-0472	1	Screw-HH, TAP
4	112-0404	1	Screw-HWHTF
5	112-0366	1	Washer-Lock
6	112-3738	1	Pedal-Brake
7	112-0599	1	Pin
8	112-0668	1	Nut-Lock, Flange
9	112-0511	1	Nut-Lock, Flange
10	112-0459	1	Pin-Cotter
11	112-0568	1	Pin-Cotter
12	112-0851	1	Control Pedal ASM
13	112-0506	1	Spring
14	112-0510	1	Spring-Extension
15	112-0348	1	Spring-Extension
16	112-0530	1	Pad-Brake
17	112-5812	1	Bracket-Lockout
18	112-0563	1	Screw-TAP
19	112-0339	1	Washer-Flat
20	112-0579	1	Washer-Flat
21	112-0542	1	Bolt-Shoulder
22	112-0442	1	Bolt-Shoulder
23	112-0347	1	Bearing-Flange
24	112-0387	1	Bearing-Flange, Hex (Split)

Ref	Part No.	Qty.	Description
25	112-0662	1	Rod-Control, Cruise
26	112-0675	1	Rod-Brake, Lock Control
27	112-0696	1	Latch-Cruise
28	112-0681	1	Bracket-Support, Steering
29	112-0541	1	Washer-Flat
30	112-0543	1	Pad-Pedal

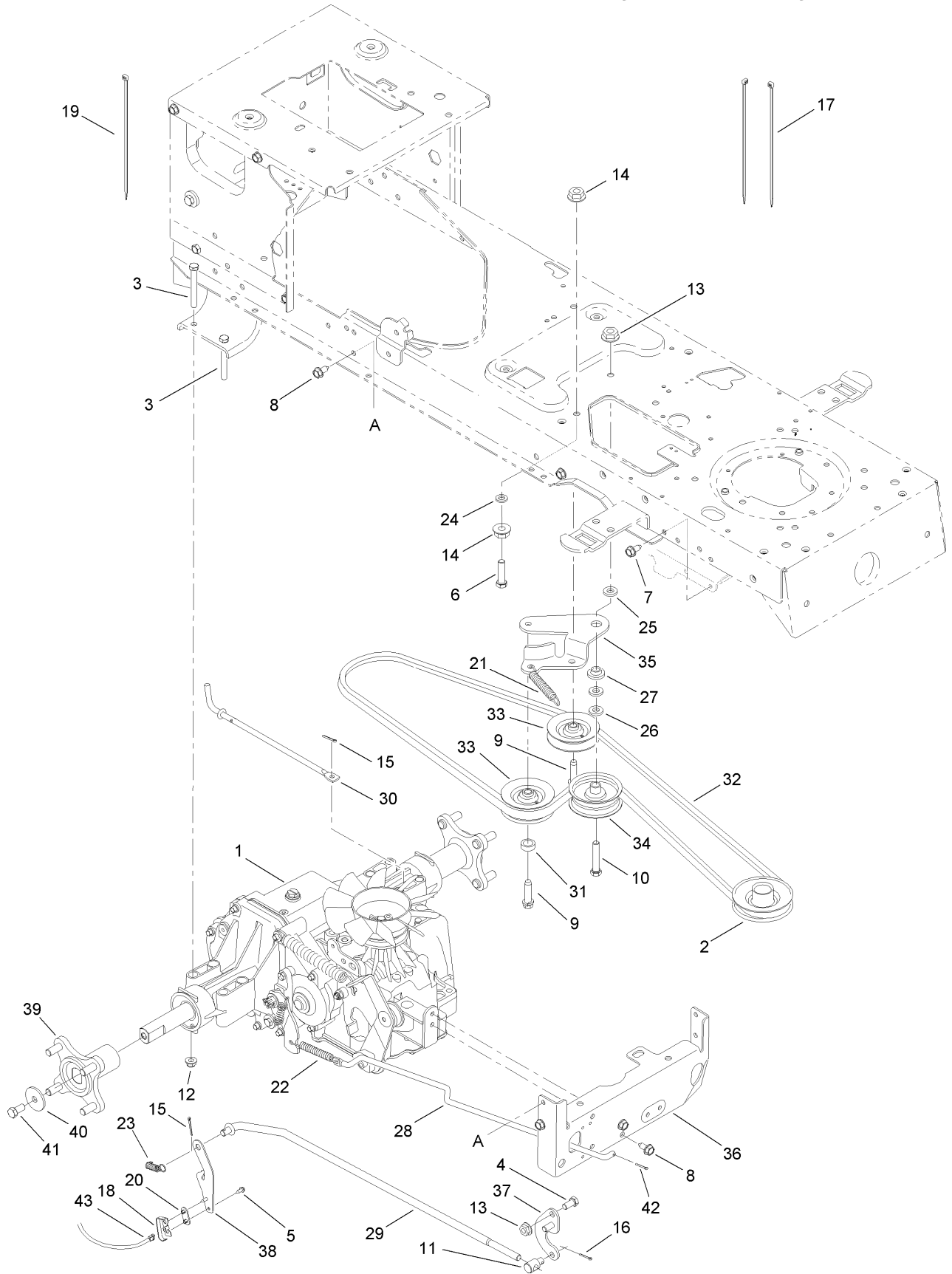


Seat Assembly

Ref	Part No.	Qty.	Description
1	112-0898	1	Lever-Adjust, Seat
2	112-0857	1	Screw-HH, TAP
3	112-0650	1	Nut-Lock, Flange
4	112-0657	1	Nut-Lock, Flange
5	112-0864	1	Grip-Adjuster, Seat
6	112-0645	1	Nut-Push
7	112-0868	1	Spacer-Adjust, Seat
8	112-0874	1	Spring-Compression
9	112-0616	1	Spring-Extension
10	112-0897	1	Bracket-Pivot, Seat
11	112-0372	1	Seat-High Back
12	112-0900	1	Selector-Adjust, Seat
13	112-0601	1	Washer-Flat
14	112-0878	1	Washer-Flat
15	112-0927	1	Bolt-Shoulder
16	112-0575	1	Bolt-Shoulder
17	112-0882	1	Bolt-Shoulder
18	112-0646	1	Bracket-Lift, LH
18	112-5849	1	Bracket-Lift, RH
19	112-5850	1	Stop-Adjust, Seat
20	112-0626	1	Screw-HWHTF
21	112-0635	1	Plate-Insulator
22	112-0529	1	Switch-Spring
23	112-0532	1	Switch-Spring, Inner

Ref	Part No.	Qty.	Description
24	112-0637	1	Plate-Boss, Insulator

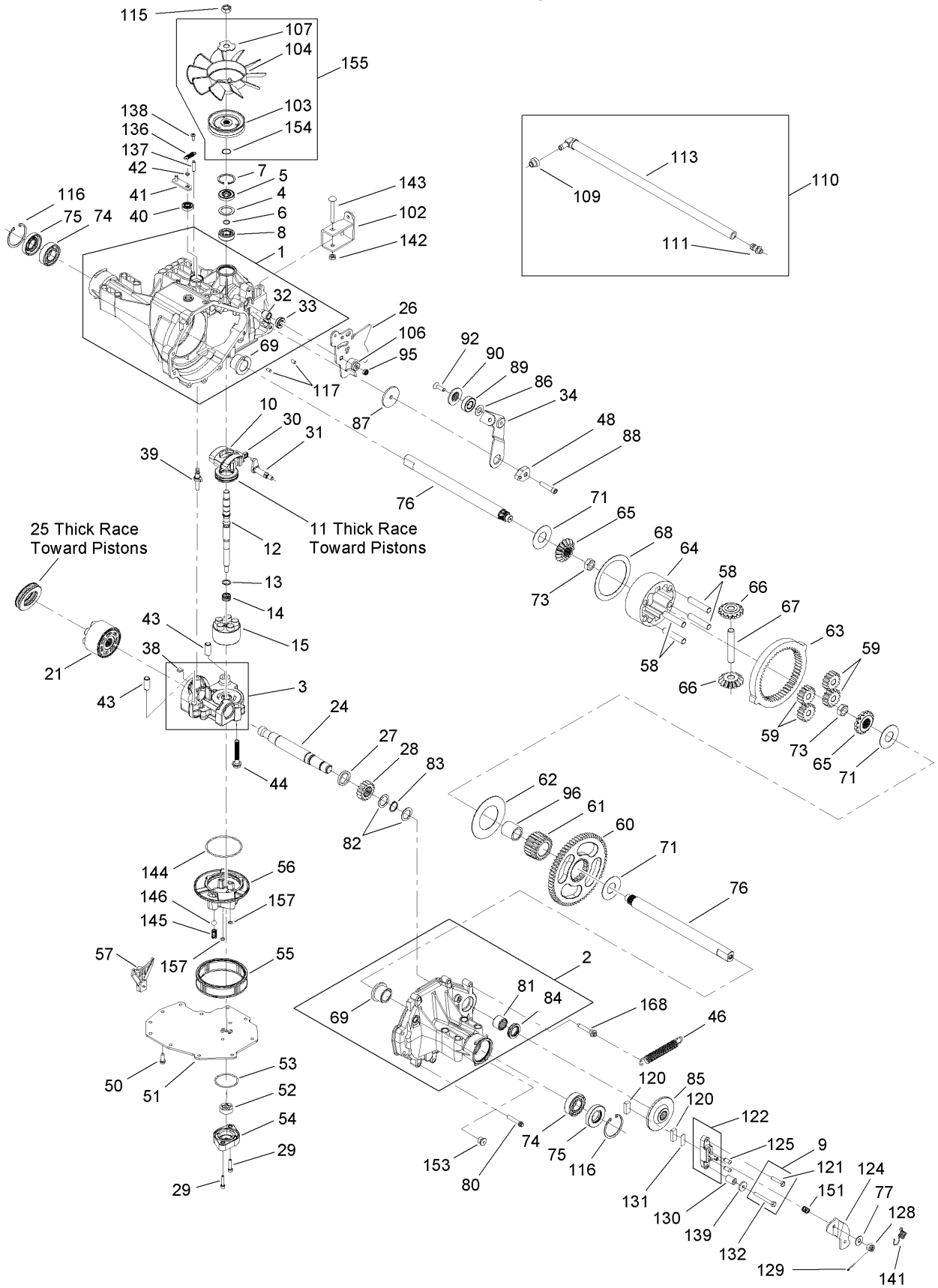
Transmission, Belt and Pulley Assembly



Transmission, Belt and Pulley Assembly

Ref	Part No.	Qty.	Description				
1	112-0914	1	Transmission ASM				
2	112-5822	1	Pulley-Engine				
3	112-0714	1	Screw-Hex				
4	112-0855	1	Screw-HH				
5	112-0626	1	Screw-HWHTF				
6	112-5823	1	Screw-HH				
7	112-0524	1	Screw-HWHTF				
8	112-0472	1	Screw-HH, TAP				
9	112-0469	1	Screw-HH, TAP				
10	112-0700	1	Screw-HH				
11	112-0908	1	Ferrule				
12	112-0511	1	Nut-Lock, Flange				
13	112-0668	1	Nut-Lock, Flange				
14	112-0668	1	Nut-Lock, Flange				
15	112-0459	1	Pin-Cotter				
16	112-0568	1	Pin-Cotter				
17	112-0527	1	Tie-Cable				
18	112-0602	1	Switch-Spring, Short				
19	112-0866	1	Tie-Cable, Push Mount				
20	112-0625	1	Plate-Insulator				
21	112-0873	1	Spring-Extension				
22	112-0350	1	Spring-Extension				
23	112-0875	1	Spring-Extension				
24	112-0415	1	Washer-Lock				
25	112-5824	1	Washer-Flat				
26	112-0544	1	Washer-Flat				
27	112-0345	1	Spacer-Shoulder				
28	112-0887	1	Rod-Brake				
29	112-0888	1	Rod-Control				
30	112-0889	1	Rod-Disengage				
31	112-5825	1	Spacer				
32	112-0317	1	Belt				
33	112-0892	1	Pulley-Idler, V-Type				
34	112-0313	1	Pulley-Idler, Flat				
35	112-0525	1	Bracket-Idler, Center Double				
36	112-0711	1	Bracket-Transmission				
37	112-0899	1	Bracket-Control				
38	112-0901	1	Bracket-Actuator				
39	112-0738	1	Wheel Hub ASM				
40	112-0534	1	Washer-Flat				
41	112-0768	1	Screw-HH				
42	112-0354	1	Pin-Cotter				
43	112-0846	1	Harness ASM				

Transmission Assembly No. 112-0914

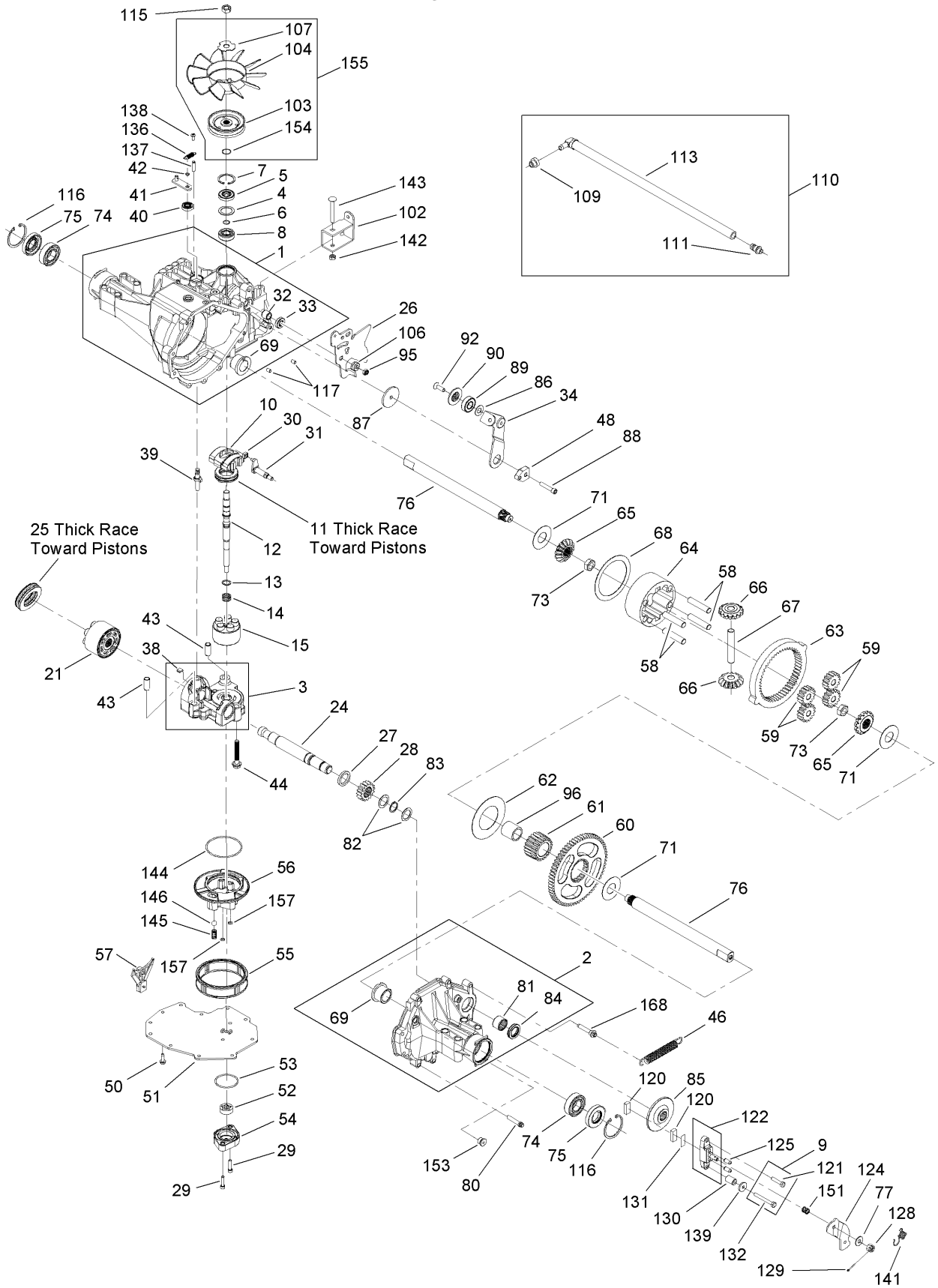


Transmisson Assembly No. 112-0914

Ref	Part No.	Qty.	Description
1	104-2101	1	Main Housing ASM
2	112-5887	1	Right Hand Housing ASM
3	112-5889	1	Center Section ASM
4	104-2104	1	Spacer
5	92-6543	1	Seal-Lip
6	94-1902	1	Ring-Wire, Retaining
7	94-1903	1	Ring-Retaining
8	94-1904	1	Bearing-Shaft, Ball
9	112-5888	1	Brake Bolt Kit
10	94-1907	1	Swashplate-Variable
11	94-6922	1	Bearing-Thrust
12	104-2105	1	Shaft-Input
13	94-1937	1	Washer-Block, Thrust
14	94-1936	1	Spring-Block
15	103-2666	1	Cylinder Block Kit
21	94-1913	1	Cylinder Block ASM
24	104-2107	1	Shaft-Output
25	94-6923	1	Bearing-Thrust
26	112-5890	1	Arm-Control
27	104-2109	1	Spacer
28	104-2110	1	Gear-Pinion, 16T
29	104-2111	2	Capscrew
30	94-1910	1	Guide-Slot
31	104-2112	1	Trunnion ASM
32	104-2113	1	Bushing-Trunnion
33	92-6544	1	Seal-Lip
34	112-5891	1	Arm-Return
38	112-5892	1	Bypass Plate Kit
39	94-1914	1	Actuator-Bypass
40	92-6545	1	Seal-Lip
41	104-2117	1	Arm-Bypass
42	936109	1	Ring-Retaining
43	94-1927	2	Pin
44	94-6926	3	Bolt
46	112-5893	1	Spring-Return, 5 Inch (Medium)
48	104-2119	1	Puck-Adjusting
50	104-2120	11	Screw
51	104-2121	1	Cover-Lower
52	104-2122	1	Gerotor ASM
53	104-2123	1	O-Ring
54	104-2124	1	Cover-Gerotor
55	112-5894	1	Filter Kit
56	112-5895	1	Manifold-Charge
57	104-2127	1	Retainer-Bearing, Motor
58	104-2128	4	Pin-Carrier
59	104-2129	4	Gear-Planet, 15T
60	104-2130	1	Gear-Spur, 67T
61	104-2131	1	Gear-Sun, 21T
62	104-2132	1	Plate-Thrust, Planet
63	104-2133	1	Gear-Ring, 51T
64	104-2134	1	Carrier-Planetary
65	104-2135	2	Gear-Miter

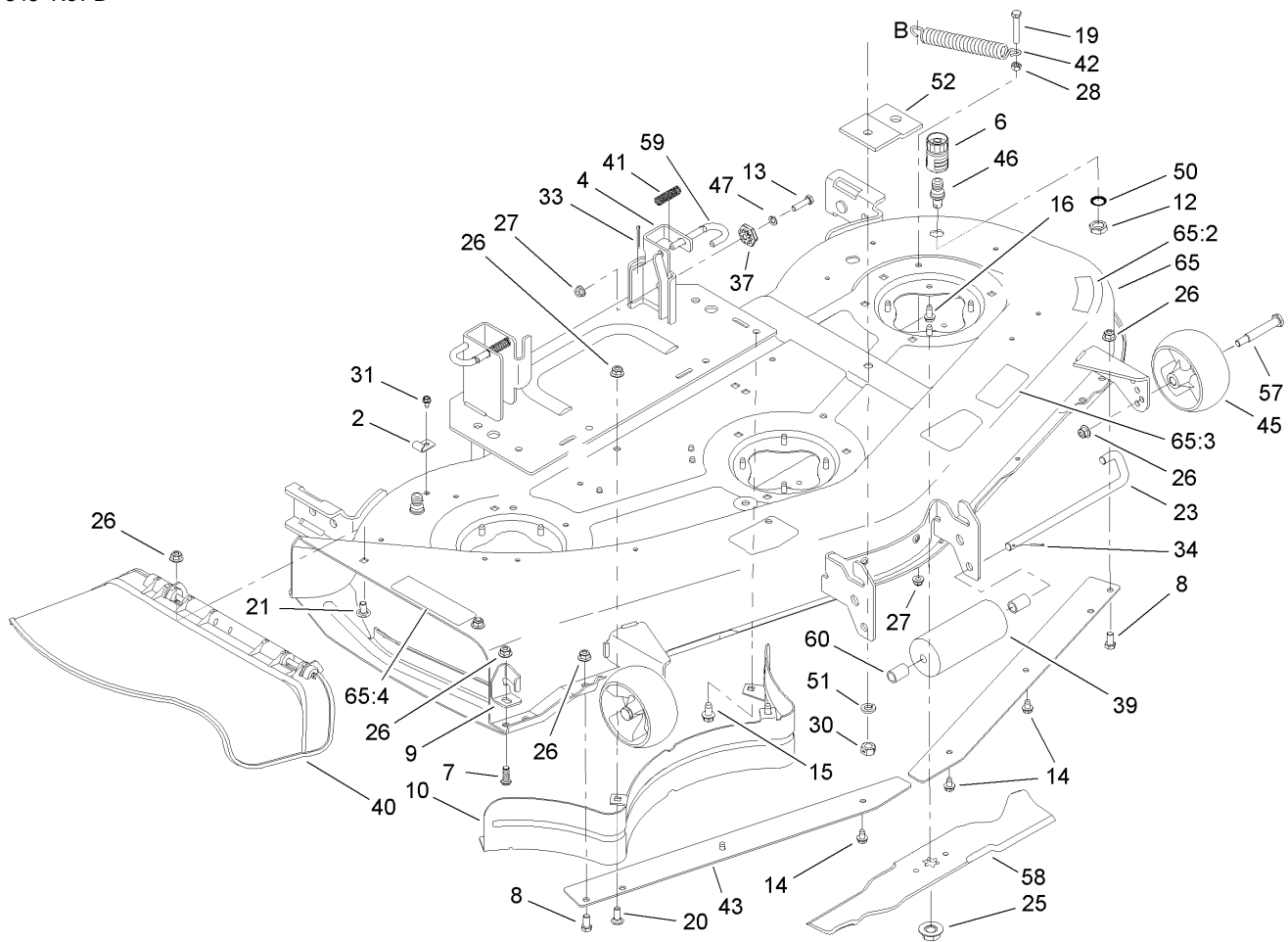
Ref	Part No.	Qty.	Description
66	104-2136	2	Gear-Miter
67	104-2137	1	Shaft
68	104-2138	1	Plate-Thrust
69	104-2139	2	Bearing-Flange
71	104-2141	3	Washer
73	104-2142	2	Nut-HJ
74	104-2143	2	Bearing-Ball
75	104-2144	2	Seal
76	112-5896	2	Shaft-Axle
77	5-4460	1	Washer-Pivot
79	104-2147	10	Sealant
80	104-2148	8	Screw-TTH
81	104-2149	1	Bearing-Needle
82	104-2150	2	Washer
83	104-2151	1	Ring-Retaining
84	104-2152	1	Seal-Lip
85	104-2153	1	Disk-Brake
86	94-1933	1	Washer
87	104-2154	1	Washer
88	104-2155	1	Screw
89	104-2156	1	Bearing
90	104-2157	1	Spacer-Locating
92	104-2158	1	Screw-Countersunk
95	104-2159	1	Nut-Hex, Lock
96	104-2160	1	Bearing-Sleeve

Transmission Assembly No. 112-0914 (Continued)



Transmisson Assembly No. 112-0914 (Continued)

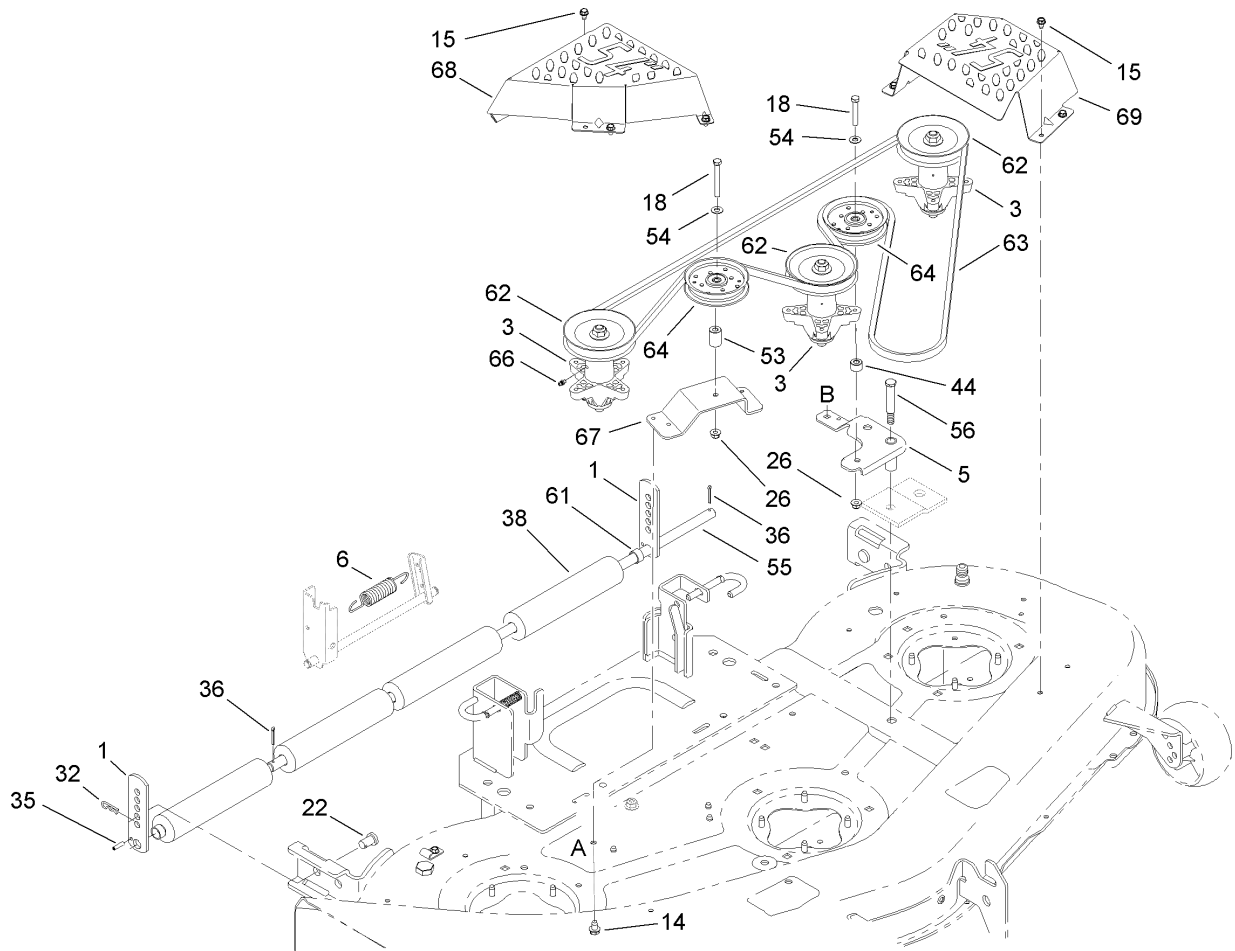
Ref	Part No.	Qty.	Description			
102	112-5897	1	Bracket-Torque			
103	112-5885	1	Pulley			
104	112-5886	1	Fan-Blade, 10			
106	112-5898	1	Spacer-Trunnion			
107	112-5899	1	Washer-Slotted			
109	112-5900	1	Bushing-Vent			
110	112-5901	1	Fitting Kit			
111	112-5902	1	Cap Vent ASM			
113	112-5903	1	90 Degree Fitting And Hose ASM Kit			
115	104-2168	1	Nut-Hex			
116	104-2169	2	Ring-Retaining			
117	104-2170	2	Pin			
120	104-2171	2	Puck-Brake			
121	112-5904	1	Bolt-Hex			
122	112-5905	1	Brake Yoke ASM			
124	112-5906	1	Arm-Brake			
125	104-2176	2	Pin-Brake			
128	93-3807	1	Nut-Castle			
129	3272-7	1	Pin-Cotter			
130	104-2180	1	Spacer			
131	104-2181	1	Puck-Plate			
132	112-5907	1	Bolt-Hex			
136	112-5908	1	Spring-Bypass			
137	112-5909	1	Pin-Spring			
138	112-5910	1	Bolt-Self Tapping			
139	112-5911	1	Washer			
141	104-2184	1	Spring-Arm, Brake			
142	112-5912	1	Nut-Hex Lock			
143	112-5913	1	Bolt			
144	104-2185	1	O-Ring			
145	104-2186	1	Spring-Relief			
146	25-2490	1	Ball			
151	104-2188	1	Spring-Brake, Anti Drag			
153	104-2189	1	Plug-Thread, Straight			
154	112-5914	1	Ring-Retaining			
155	112-5915	1	Fan And Pulley Kit			
157	104-2191	2	O-Ring			
168	112-5916	1	Bolt-Shoulder, Torx			
● 203	112-5917	1	Seal And O-Ring Kit			



Deck Assembly

Ref	Part No.	Qty.	Description
2	112-0378	1	Bracket-Retain, Hook
4	112-0413	1	LH Hanger Bracket ASM
6	112-0916	1	Adapter-Nozzle, Water
7	112-0631	1	Screw-HH
8	112-0855	1	Screw-HH
9	112-0854	1	Stop-Chute
10	112-5872	1	Baffle
12	112-0351	1	Nut-Hex
13	112-0373	1	Screw-HH
14	112-5838	1	Screw-TAP
15	112-0906	1	Screw-HWHTF
16	112-1083	1	Screw-HH
19	112-5843	1	Screw-HH
20	112-5844	1	Bolt-CARR
21	112-0452	1	Bolt-CARR
23	112-5839	1	Pin-Roller
25	112-0330	1	Nut-Flange, Hex
26	112-0668	1	Nut-Lock, Flange
27	112-0650	1	Nut-Lock, Flange
28	112-0437	1	Nut-Hex
30	112-1117	1	Nut-Hex, Lock
31	112-0524	1	Screw-HWHTF
33	112-0412	1	Pin-Cotter
34	112-5841	1	Pin-Cotter

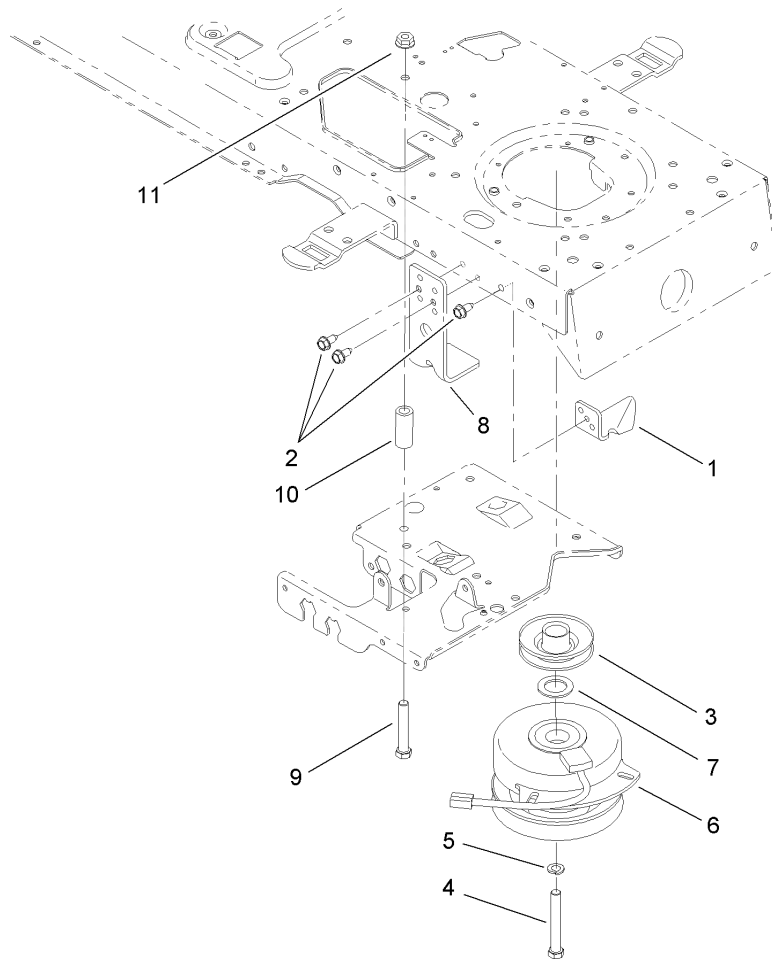
Ref	Part No.	Qty.	Description
37	112-0327	1	Gear-Adjustment, Deck
39	112-5840	1	Roller
40	112-5846	1	Chute Deflector ASM
41	112-0406	1	Spring-Compression
42	112-0349	1	Spring
43	112-0895	1	Skirt-Deck
45	112-0677	1	Wheel-Deck
46	112-0879	1	Nozzle-Water, Deck
47	112-0366	1	Washer-Lock
50	112-0922	1	Washer-Lock
51	112-0923	1	Washer-Lock
52	112-0893	1	Bracket-Stabilizer
57	112-0325	1	Bolt-Shoulder
58	112-0931	1	Blade-18.50
59	112-0436	1	Pin-Handle, Deck Release
60	112-0691	1	Spacer
65	112-5862	1	Deck And Decal ASM
65:2	112-1268	1	Decal-Danger, Deck
65:3	112-1273	1	Decal-Belt Routing, Deck
65:4	112-1265	1	Decal-Danger



Deck Roller, Belt, Cover and Pulley Assembly

Ref	Part No.	Qty.	Description
1	112-0845	1	Adjuster-Height
3	112-0915	1	Spindle ASM
5	112-0853	1	Idler ASM
6	112-5871	1	Spring Extension
14	112-5838	1	Screw-TAP
15	112-0676	1	Screw-TAP
18	112-0700	1	Screw-HH
22	112-0376	1	Pin-Bracket, Lift
26	112-0668	1	Nut-Lock, Flange
32	112-0912	1	Pin-Hair
35	112-0861	1	Pin-Spring
36	112-5845	1	Pin-Spring
38	112-0867	1	Roller-Deck
44	112-0891	1	Spacer
53	112-0890	1	Spacer
54	112-1018	1	Washer-Isomount
55	112-0880	1	Shaft-Roller
56	112-0886	1	Bolt-Shoulder
61	112-0932	1	Spacer
62	112-0505	1	Pulley-Deck
63	112-0933	1	Belt-V, Type B
64	112-0314	1	Pulley-Idler
66	112-0926	1	Fitting-Grease
67	112-5848	1	Bracket-Idler, Stationary

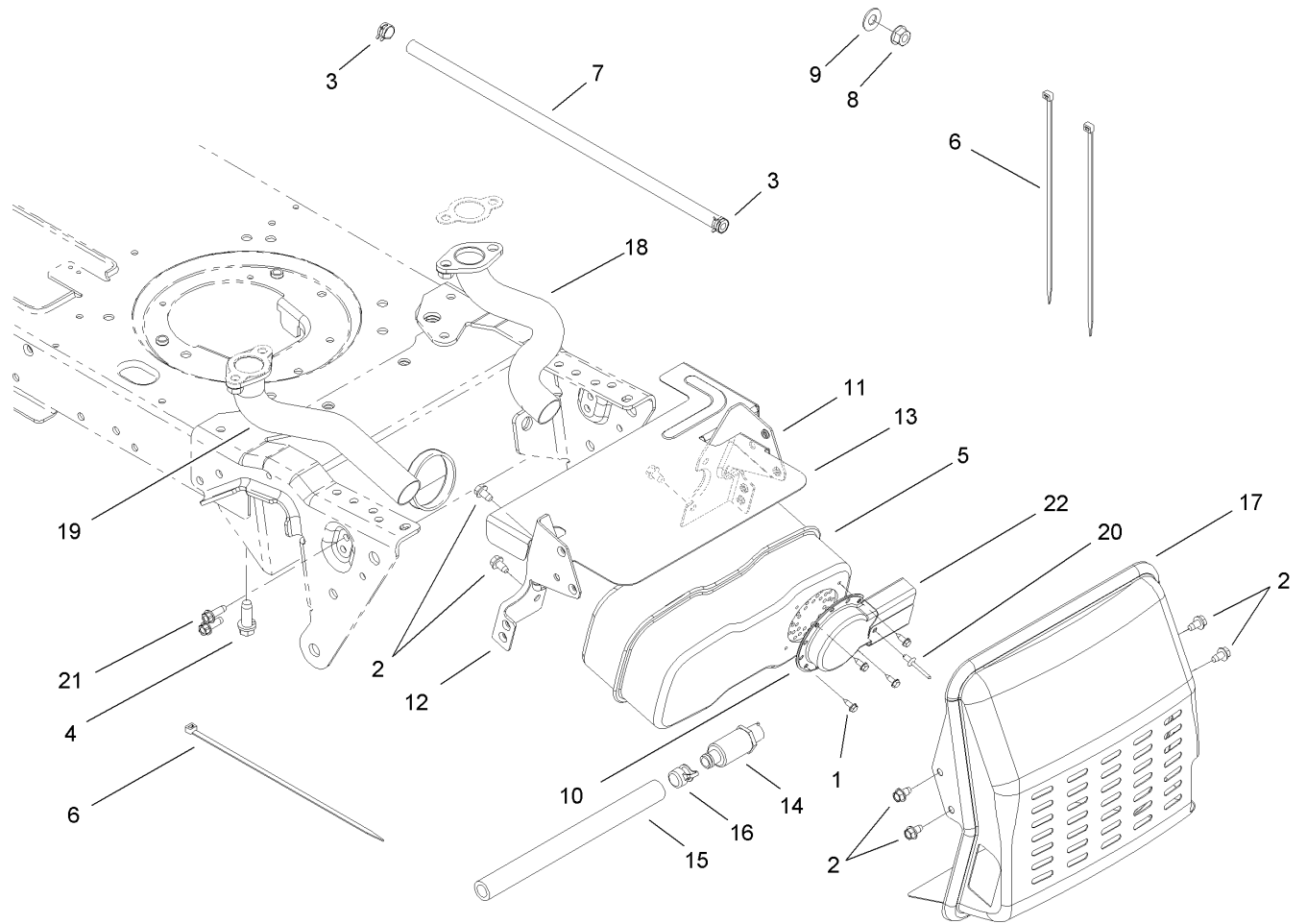
Ref	Part No.	Qty.	Description
68	112-0903	1	Cover-Spindle, RH
69	112-0904	1	Cover-Spindle, LH



Electric Clutch Assembly

Ref	Part No.	Qty.	Description
1	112-0571	1	Bracket-Clutch
2	112-0472	1	Screw-HH, TAP
3	112-5822	1	Pulley-Engine
4	112-0561	1	Screw-HH
5	112-0428	1	Washer-Lock
6	112-0913	1	Clutch-Electric, PTO
7	112-0420	1	Washer-Flat
8	112-0689	1	Bracket-Deck, Up Stop
9	112-0700	1	Screw-HH
10	112-0433	1	Spacer
11	112-0668	1	Nut-Lock, Flange

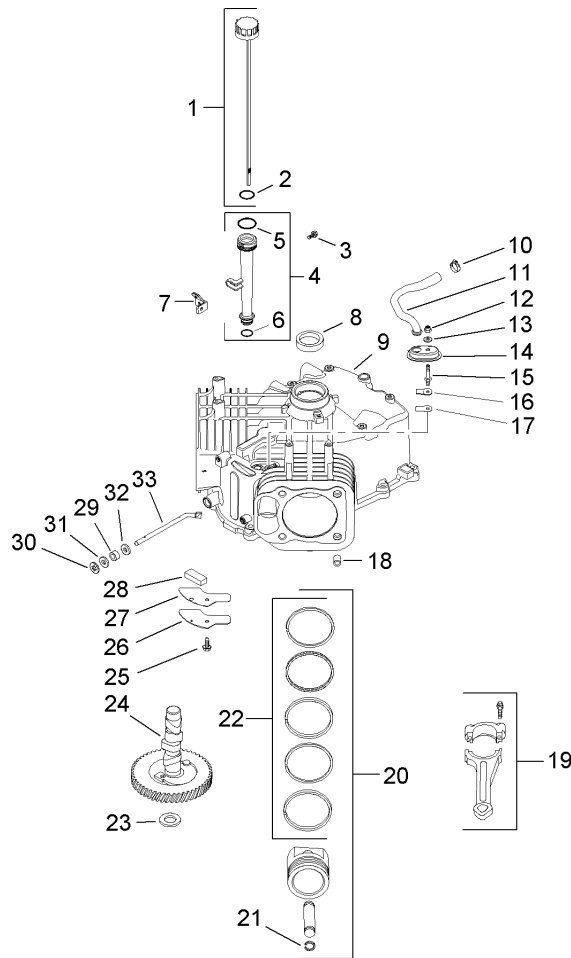
--	--	--	--



Muffler Assembly

Ref	Part No.	Qty.	Description
1	112-0626	1	Screw-HWHTF
2	112-0524	1	Screw-HWHTF
3	112-0573	1	Clamp-Hose
4	112-0487	1	Screw-TAP
5	112-0342	1	Muffler-Inlet, Dual
6	112-0527	1	Tie-Cable
7	112-0720	1	Hose-Fuel
8	112-0490	1	Nut-Lock, Flange
9	112-0572	1	Washer-Flat
10	112-0453	1	Deflector-Muffler
11	112-0467	1	Bracket-Muffler, LH
12	112-0466	1	Bracket-Muffler, RH
13	112-0716	1	Shield-Heat
14	112-0388	1	Drain-Oil
15	112-0553	1	Hose-Drain
16	112-0397	1	Cap-Drain, Oil
17	112-0457	1	Muffler Shield ASM
18	112-0391	1	Pipe-Exhaust, LH
19	112-0392	1	Pipe-Exhaust, RH
20	112-3741	1	Rivet-Pop
21	112-0587	1	Screw-HH, TAP
22	112-0730	1	Deflector-Muffler, Long

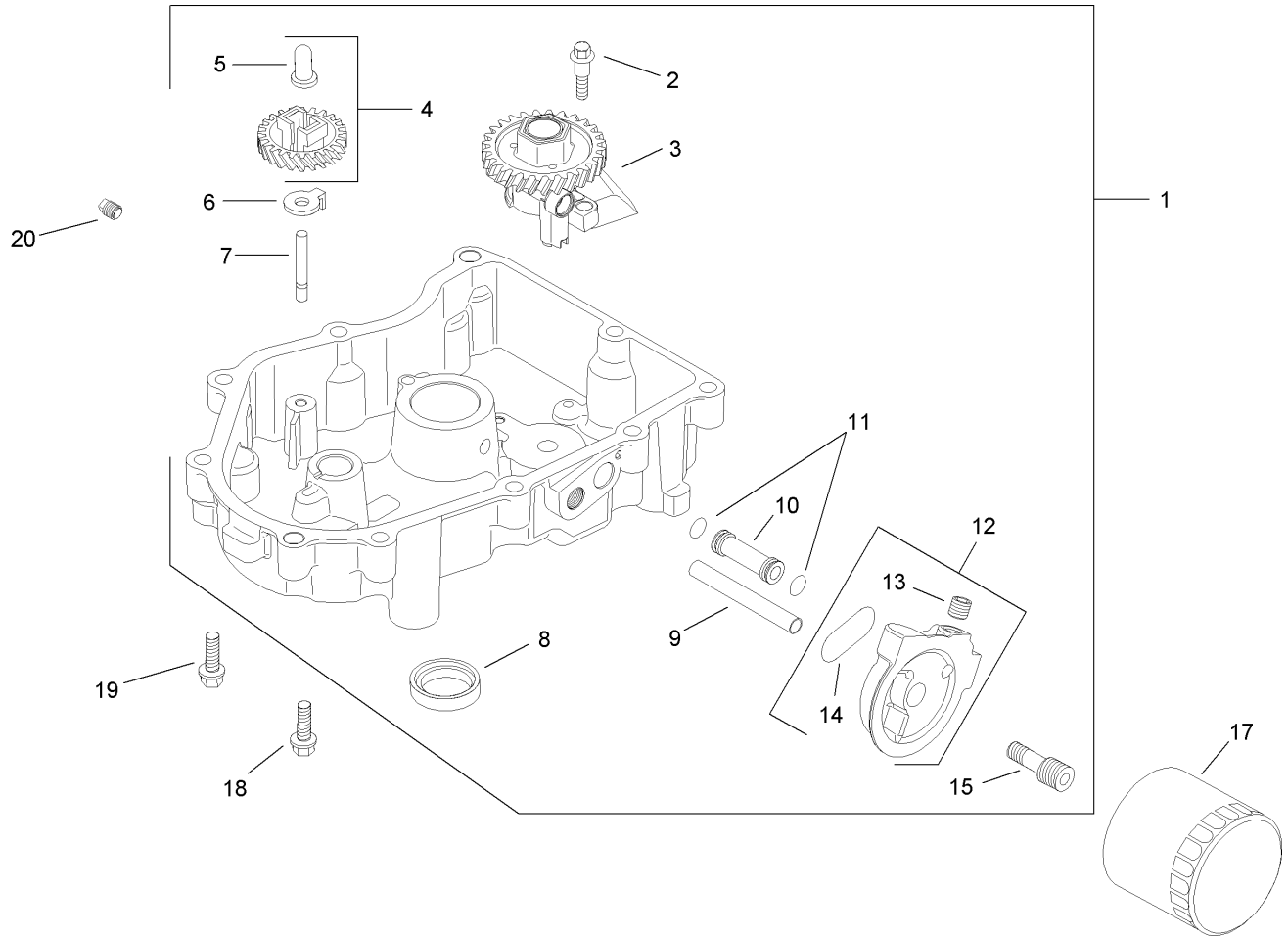
--	--	--	--



Crankcase Assembly Kohler SV735-0011

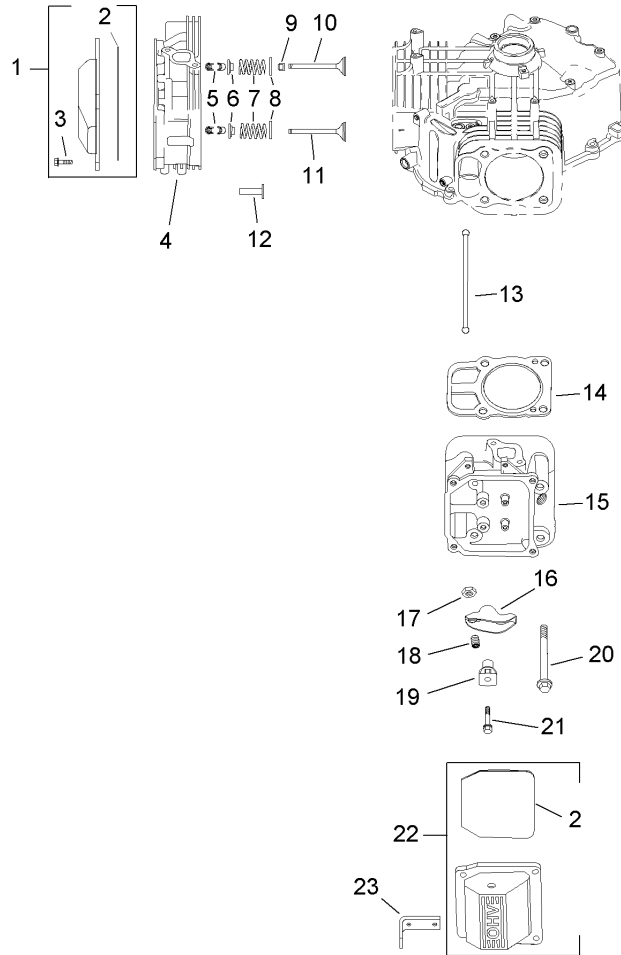
Ref	Part No.	Qty.	Description
❶1	32 038 01-S	1	Dipstick Kit (Includes 2)
❷2	12 153 03-S	1	O-Ring
❸3	M-545016-S	1	Screw-HHFTF (M5X0.8X16)
❹4	12 123 04-S	1	Oil Fill Tube ASM (Includes 5-6)
❺5	12 153 02-S	1	O Ring-Upper Oil Fill Tube
❻6	12 153 01-S	1	O-Ring-Lower Oil Fill Tube
❼7	24 126 19-S	1	Bracket-Oil Fill Tube
❽8	24 032 01-S	1	Seal-Oil
❾9		1	Crankcase (Use: Short Block # 32 522 03)
❿10	25 237 14-S	1	Clamp-Hose
⓫11	32 326 04-S	1	Hose-Breather
⓬12	M-547050-S	1	Nut-Hex, Lock (M5X0.8)
⓭13	32 468 01-S	1	Washer-Sealing
⓮14	32 081 02-S	1	Housing-Breather
⓯15	32 072 02-S	1	Stud-Breather Cover
⓰16	24 018 04-S	1	Retainer-Breather Reed
⓱17	24 402 05-S	1	Reed-Breather
⓲18	24 380 16-S	6	Pin-Locating
⓳19	24 067 13-S	2	Rod-Connecting (Standard)
⓴20	32 874 06-S	2	Piston W/Ring Set (Standard) (Includes 21-22)
⓵21	24 018 01-S	4	Retainer-Piston, Pin
⓶22	24 108 11-S	2	Ring Set (STD And .08)

Ref	Part No.	Qty.	Description
⓷23	12 422 10-S	1	Shim-Camshaft (Yellow .034)
⓸23	12 422 09-S	1	Shim-Camshaft (Red .032)
⓹23	12 422 13-S	1	Shim-Camshaft (Black .04)
⓺23	12 422 07-S	1	Shim-Camshaft (White .028)
⓻23	12 422 08-S	1	Shim-Camshaft (Blue .03)
⓼23	12 422 11-S	1	Shim-Camshaft (Green .036)
⓽23	12 422 12-S	1	Shim-Camshaft (Gray .038)
⓿24	32 012 01-S	1	Camshaft Kit
⓫25	M-645016-S	1	Screw-HHFTF (M6X1.0X16)
⓬26	32 096 04-S	1	Breather Cover ASM
⓭27	32 041 01-S	1	Gasket-Cover, Breather
⓮28	32 050 01-S	1	Filter-Breather
⓯29	28 032 09-S	1	Seal-Shaft, Cross Governor
⓰30	24 018 09-S	1	Ring-Retainer
⓱31	M-931010-S	1	Washer-Flat (8 Mm)
⓲32	24 468 15-S	1	Washer-Flat (1/4)
⓳33	24 144 38-S	1	Shaft-Cross, Governor



Oil Pan and Lubrication Assembly Kohler SV735-0011

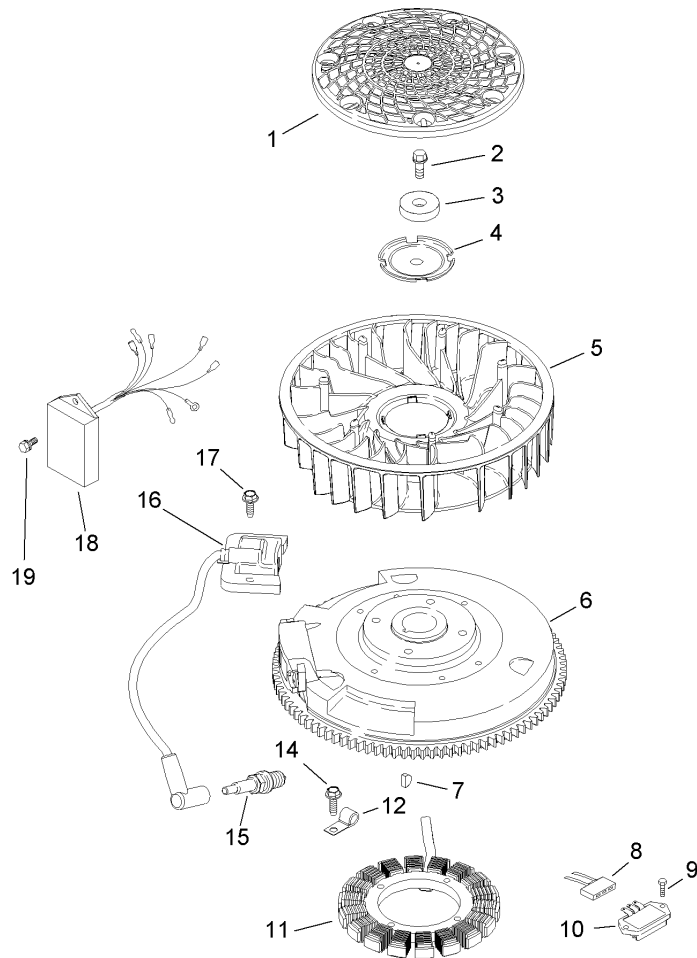
Ref	Part No.	Qty.	Description
❶	32 199 02-S	1	Oil Pan ASM (Includes 2-15)
❷	32 086 01-S	2	Screw-Hex Flange Thread Forming (Shoulder)
❸	32 393 08-S	1	Oil Pump ASM
❹	24 043 12-S	1	Governor Gear Kit W/Pin (Includes 5)
❺	12 380 01-S	1	Pin-Regulating, Governor
❻	24 448 02-S	1	Tab-Locking
❼	12 144 02-S	1	Shaft-Gear, Governor
❽	52 032 08-S	1	Seal-Oil (PTO End)
❾	32 123 01-S	1	Tube-Oil Feed (Filter To Oil Pan)
❿	32 123 03-S	1	Tube-Oil Feed (Oil Pan To Filter)
⓫	24 153 01-S	2	O-Ring
⓬	32 029 07-S	1	Adapter-Oil Filter (Includes 13-14)
⓭	25 139 60-S	1	Plug-Hex, Countersunk (1/8)
⓮	32 153 02-S	1	O-Ring-Oil Filter Adapter
⓯	32 136 03-S	1	Nipple-Oil Filter
⓰	98020	1	Filter-Oil
⓱	24 086 17-S	1	Screw-HF (M8X1.25X45)
⓲	24 086 16-S	9	Screw-HF (M8X1.25X45)
⓳	25 139 57-S	1	Plug-Square Head Solid (3/8)



Head, Valve and Breather Assembly Kohler SV735-0011

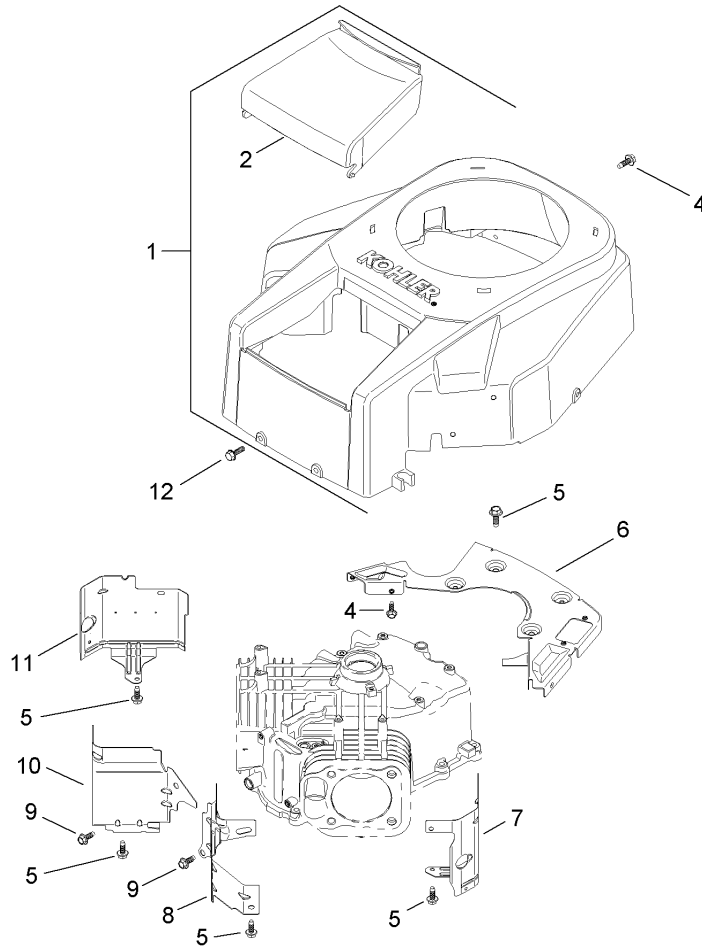
Ref	Part No.	Qty.	Description
❶1	24 755 141-S	1	Plain Valve Cover ASM (Includes 2-3)
❷2	24 153 28-S	1	O-Ring
❸3	M-651030-S	8	Screw-Hex Flange (M6X1.0X30)
❹4	32 318 01-S	1	Head ASM (No.1 Cylinder)
❺5	12 755 03-S	8	Retainer Kit
❻6	12 173 01-S	4	Cap-Spring, Valve
❼7	24 089 02-S	4	Spring-Valve
❽8	235011-S	4	Retainer-Spring
❾9	66 032 05-S	2	Seal-Stem, Valve
❿10	24 017 01-S	2	Valve-Intake (Standard)
❿10	24 017 02-S	2	Valve-Intake (.25)
❿11	24 016 01-S	2	Valve-Exhaust (Standard)
❿11	24 016 02-S	2	Valve-Exhaust (.25)
❿12	32 019 01-S	4	Tappet
❿13	32 411 02-S	4	Rod-Push
❿14	24 841 03-S	2	Cylinder Head Gasket Kit
❿15	32 318 02-S	1	Head ASM (No.2 Cylinder)
❿16	32 186 02-S	4	Arm-Rocker
❿17	32 100 04-S	4	Nut-Hex (M10X0.75)
❿18	32 086 03-S	4	Screw-Set
❿19	32 599 01-S	4	Pivot-Rocker Arm
❿20	12 086 16-S	8	Screw-Hex Flange (M10X1.5X90)
❿21	32 086 04-S	4	Screw-Hex Flange (M6X1.0X45)

Ref	Part No.	Qty.	Description
❿22	32 096 06-S	1	Breather Valve Cover ASM (Includes 2)
❿23	24 445 01-S	1	Strap-Lifting
❿24	24 041 49-S	1	Gasket-Manifold, Exhaust
❿25	24 153 27-S	1	O-Ring, Intake Port



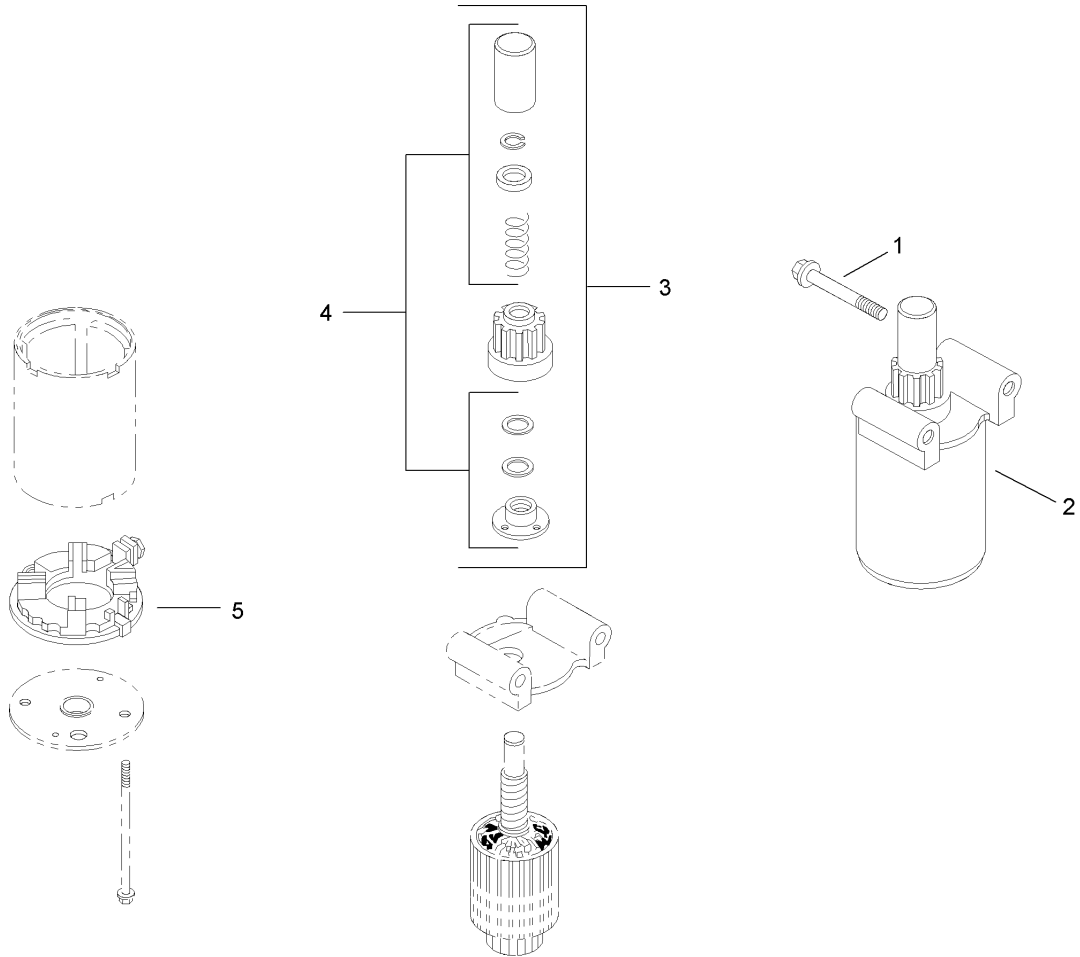
Ignition and Electrical Assembly Kohler SV735-0011

Ref	Part No.	Qty.	Description
❶	32 162 03-S	1	Screen-Grass
❷	12 086 14-S	1	Screw-Hex, Flange (M10X1.5X45)
❸	12 468 03-S	1	Washer-Flat (3/8)
❹	20 146 02-S	1	Plate-Fan Mounting
❺	32 157 01-S	1	Fan
❻	32 025 05-S	1	Flywheel
❼	X-42-15-S	1	Key (3/16 X 5/8)
❽	236602-S	1	Connector (3 Contact)
❾	M-551016-S	2	Screw-Heavy Hex Flange (M5X0.8X16)
❿	41 403 09-S	1	Rectifier-Regulator
⓫	32 085 01-S	1	15 Amp Stator Kit
⓬	47 154 01-S	1	Clip-Cable
⓭	M-548025-S	2	Screw-HHFTF (M5X0.8X25)
⓮	77-7330	1	Plug-Spark
⓯	24 584 36-S	2	Module-Ignition
⓰	M-545020-S	4	Screw-HHFTF (M5X0.8X20)
⓱	24 584 31-S	1	Module-Advance, Spark
⓲	M-448010-S	2	Screw, Hex. Cap
⓳	32 176 03-S	1	Harness, Wiring
⓴	25 454 03-S	2	Tie-Wire



Blower Housing and Baffle Assembly Kohler SV735-0011

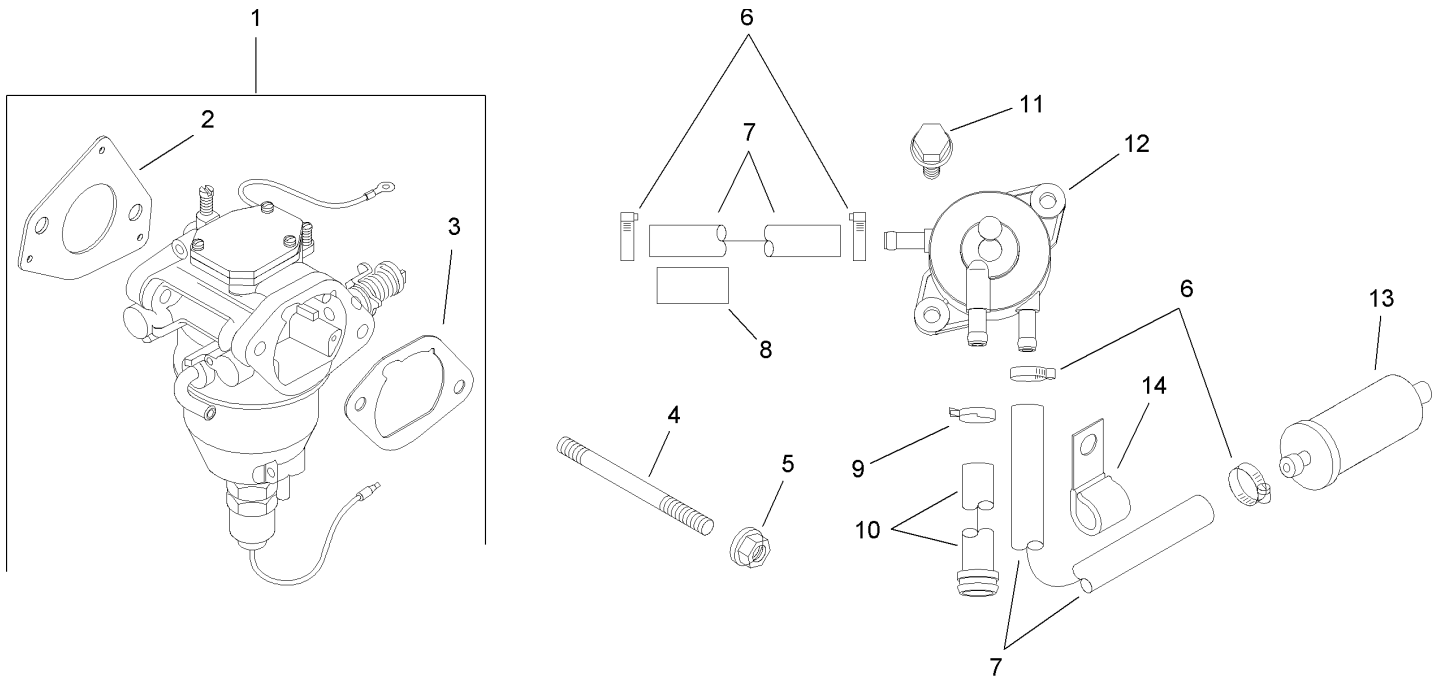
Ref	Part No.	Qty.	Description				
1	32 027 03-S	1	Blower Housing ASM (Includes 2-4)				
2	32 096 08-S	1	Cover-Cleaner, Air				
4	M-545016-S	6	Screw-HHFTF (M5X0.8X16)				
5	M-645016-S	8	Screw-HHFTF (M6X1.0X16)				
6	32 146 05-S	1	Plate-Backing W/Rectifier-Regulator Opening				
7	32 063 05-S	1	Baffle-Cylinder Barrel (No.2 Side)				
8	32 063 02-S	1	Baffle-Valley (No.2 Side)				
9	M-545010-S	4	Screw-HHFTF (M5X0.8X10)				
10	32 063 03-S	1	Baffle-Valley (No.1 Side)				
11	32 063 04-S	1	Baffle-Cylinder Barrel (#1 Side)				
12	24 086 12-S	2	Screw-Hex Cap (M6X1.7X18)				
13	41 037 10-S	1	Nameplate-Service				



Starting System Assembly Kohler SV735-0011

Ref	Part No.	Qty.	Description
❶	M-839080-S	2	Screw-Hex, Flange (M8X1.25X70)
❷	32 098 01-S	1	Starter ASM (Includes 3-5)
❸	12 755 39-S	1	Drive Kit
❹	12 755 38-S	1	Drive Parts Kit
❺	12 243 04-S	1	Cap-End, Commutator

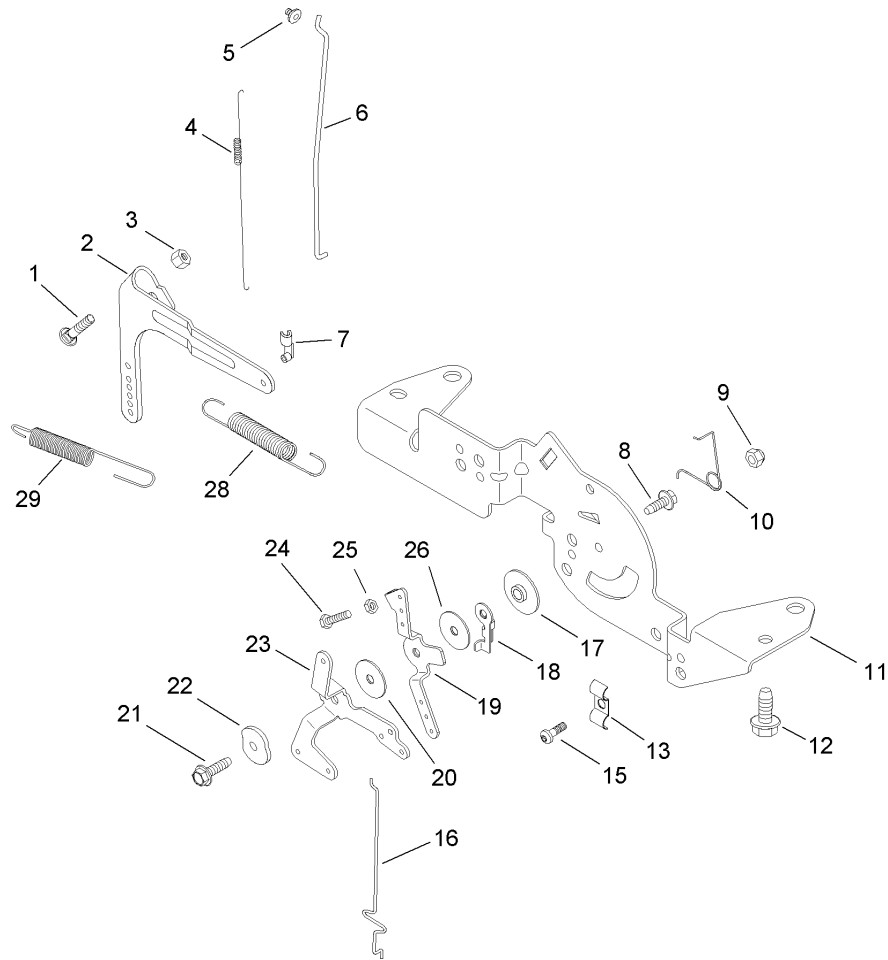
--	--	--	--



Fuel System Assembly Kohler SV735-0011

Ref	Part No.	Qty.	Description
1	32 853 03-S	1	Carburetor Kit W/Gaskets (Includes 2-3)
2	24 041 52-S	1	Gasket-Carburetor
3	24 041 14-S	1	Gasket-Base, Air Cleaner
4	M-629105-S	2	Stud-Carburetor
5	M-641060-S	2	Nut-Hex, Flange (M6X1.0)
6	25 237 14-S	4	Clamp-Hose
7	25 111 34-S	2	Line-Fuel (24 Inch, Cut to needed Length)
8	25 431 10-S	1	Sleeve-Anti-Abrasion
9	25 237 01-S	1	Clamp-Hose
10	32 326 02-S	1	Hose-Pump, Fuel
11	24 086 12-S	2	Screw-Hex Cap (M6X1.7X18)
12	24 393 16-S	1	Pump-Pulse, Fuel
13	98021	1	Filter-Fuel
14	47 154 01-S	1	Clip-Cable
15	24 757 36-S	1	Service Choke Repair Kit
16	24 757 38-S	1	Service Gasket Repair Kit
17	24 757 44-S	1	Float Kit W/Gaskets
18	24 757 45-S	1	Solenoid Valve Kit W/Gaskets
19	24 757 46-S	1	Overhaul Kit W/Gaskets

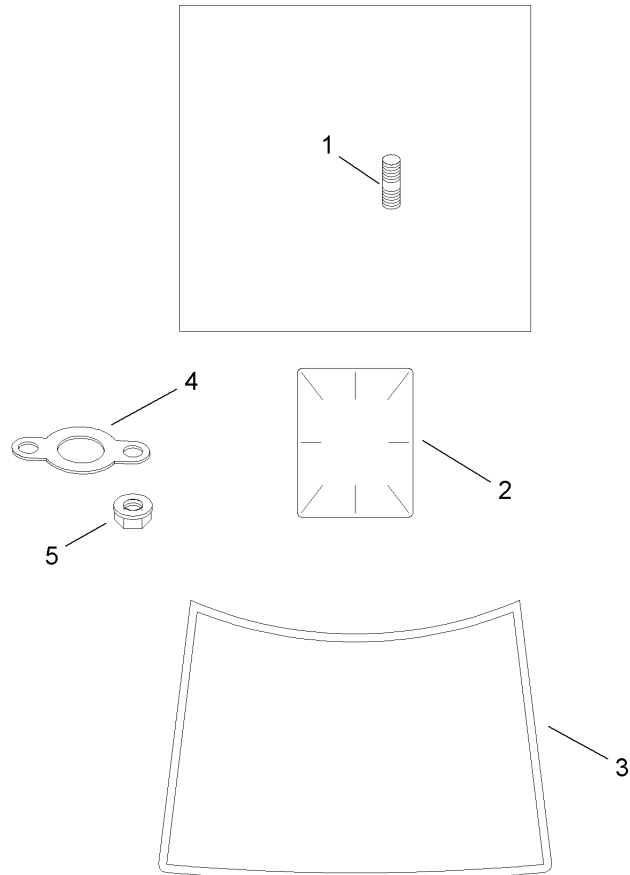
Ref	Part No.	Qty.	Description
20	24 757 18-S	1	Overhaul Kit W/Gaskets
21	24 757 19-S	1	Choke Service Repair Kit
22	24 757 20-S	1	Gasket Service Repair Kit
23	24 757 22-S	1	Solenoid Valve Service Kit W/Gaskets



Engine Control Assembly Kohler SV735-0011

Ref	Part No.	Qty.	Description
❶	24 211 03-S	1	Bolt-Square Neck, Round Head
❷	24 090 33-S	1	Lever-Governor
❸	M-641060-S	1	Nut-Hex, Flange (M6X1.0)
❹	24 089 01-S	1	Spring-Linkage
❺	25 158 08-S	1	Bushing-Retaining, Linkage
❻	24 079 04-S	1	Linkage-Throttle
❼	25 158 11-S	1	Bushing-Linkage, Throttle
❽	M-545016-S	1	Screw-HHFTF (M5X0.8X16)
❾	M-547050-S	1	Nut-Hex, Lock (M5X0.8)
❿	24 089 03-S	1	Spring-Return, Choke
⓫	24 126 161-S	1	Bracket-Control
⓬	M-645016-S	4	Screw-HHFTF (M6X1.0X16)
⓭	47 237 02-S	1	Clamp-Dual Conduit
⓮	24 086 43-S	1	Screw-Thread Forming
⓯	24 079 22-S	1	Linkage-Choke
⓰	24 112 27-S	1	Spacer-Control
⓱	24 090 47-S	1	Lever-Actuator, Throttle
⓲	24 090 13-S	1	Lever-Control, Throttle
⓳	24 468 01-S	1	Washer-Flat (5.5 Mm)
⓴	M-545020-S	1	Screw-HHFTF (M5X0.8X20)
⓵	41 468 03-S	1	Washer-Spring (1/4)
⓶	24 090 05-S	1	Lever-Choke
⓷	M-403025-S	1	Screw-Hex Head Cap (M4X0.7X25)

Ref	Part No.	Qty.	Description
❸❺	M-446030-S	1	Nut-Hex (M4X0.7)
❸❻	24 468 20-S	1	Washer-Flat
❸⓪	24 089 55-S	1	Spring-Governor
❸❶	24 089 25-S	1	Spring-Governor



Artwork is representative.

Actual labels may differ depending on model and specification number.

Exhaust Stud, Gasket and Decal Assembly Kohler SV735-0011

Ref	Part No.	Qty.	Description
❶	25 072 04-S	4	Stud (M8X1.25X33)
❷	25 113 39-S	1	Decal-Clear Laminate
❸	32 113 25-S	1	Decal-26 Hp
❹	24 041 49-S	1	Gasket-Manifold, Exhaust
❺	M-841080-S	4	Nut-Hex, Flange (M8X1.25)
❶❷	32 522 03	1	Short Block
❶❸	32 755 01-S	1	Overhaul Kit

--	--	--	--

Attachments and Accessories

For 14AK81RK744 - GT2300 Garden Tractor

Product Name	Model/Part
Washout Port Kit	112-5803
42 Inch Two-Stage Snowthrower	190-032-101
46 Inch Front Blade	190-833-000
54 Inch Triple Bagger	190-842-000
Spark Plug	77-7330
54 Inch Mulch Kit	77225
10 cu. ft. Dump Cart	79901
10 cu. ft. Poly Dump Cart	79935
Folding Loading Ramp	79949
Sweeper	79985
12 Inch Rear Wheel Weights	81115
Tire Chains (23 x 9.50-12)	82531
Filter-Air	98019
Filter-Oil	98020
Filter-Fuel	98021

NOTES

