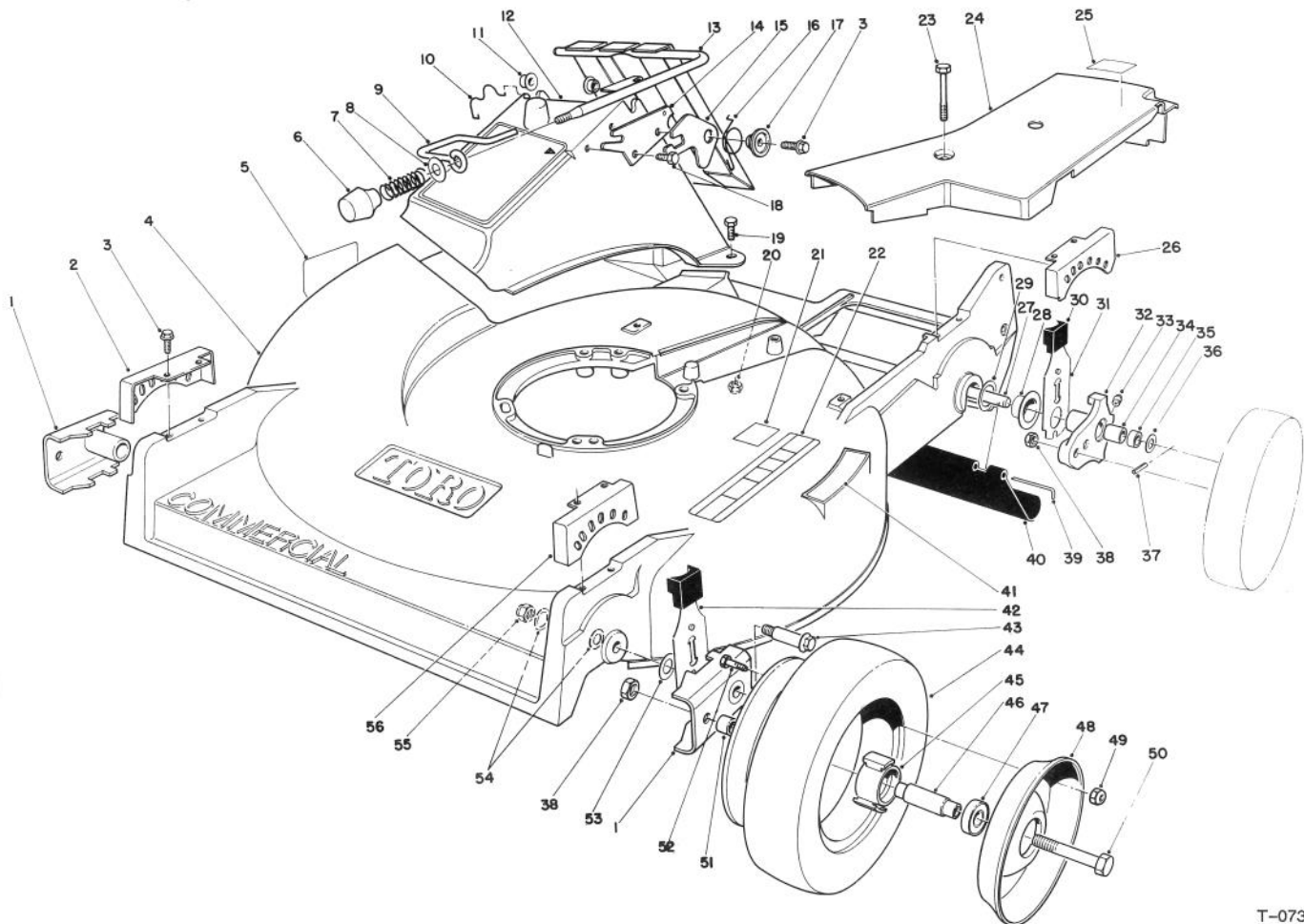


MODEL NO. 22030-100001 & UP
MODEL NO. 22035-100001 & UP

**PARTS
CATALOG**

PROLINE 21''
Rear Bagging Mower



T-0733

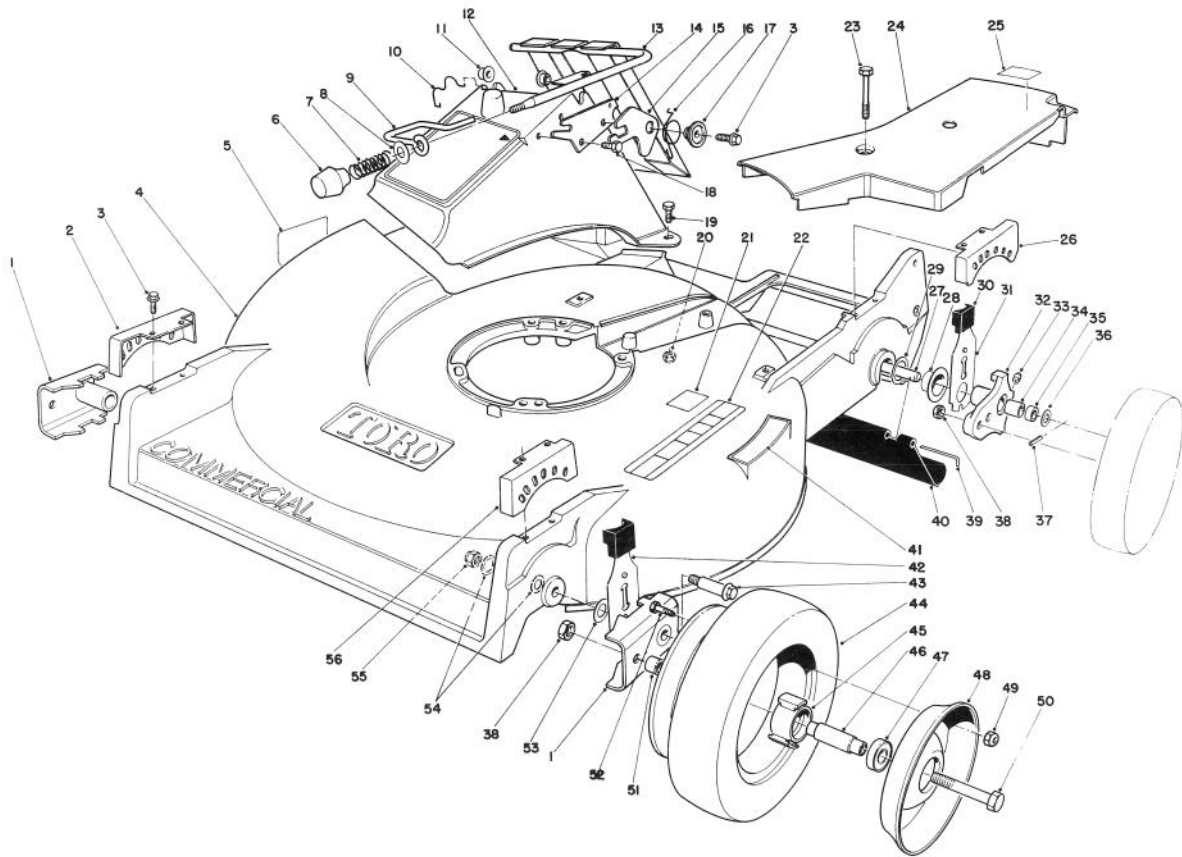
HOUSING ASSEMBLY (Model 22030)

Ref. No.	Part No.	Description	No. Used
1	61-8300	Pivot Arm Assembly	2
2	49-8770	Quadrant - Front, R.H.	1
3	49-2040	Screw - Thread Forming	9
4	14-2499	Housing - Commercial (Incl. Ref. #5, 21-22 & 41)	1
5	39-5770	Decal - Danger	1
6	233-37	Knob	1
7	23-0920	Spring - Compression	1
8	3256-25	Washer - Flat	1
9	23-0940	Latch - Door	1
10	33-4830	Retainer - Door	1
11	23-0880	Bushing	2
12	36-1350	Chute - Discharge	1
13	33-5660	Handle - Door	1
14	23-1040	Plate - Latch	1
15	42-4010	Latch - Safety	1
16	33-4860	Spring - Torsion	1
17	43-4840	Spacer - Latch	1

Ref. No.	Part No.	Description	No. Used
18	32104-17	Screw - Cap, Hex. Hd.	1
19	321-7	Screw - Cap, Hex. Hd.	2
20	3296-42	Nut - Lock	2
21		Decal - Safety Standard	1
22	71-1280	Decal - Safety Instructions	1
23	37-7260	Screw - Special	2
24	63-9441	Cover - Belt	1
25	52-2610	Label - Grease	1
26	49-8740	Quadrant - Rear, L.H.	1
*	49-8750	Quadrant - Rear, R.H.	1
27	49-8790	Shaft - Axle, Rear	1
28	48-2170	Cap - End	2
29	74-1810	Washer - Thrust	2
30	25-7740	Knob - Arm	4
31	66-7561	Spring Arm Assy. Rear	2
32	42-3510	Pivot Arm (Incl. Ref. 33-35)	2
33	302-56	Fitting - Grease	2

*Not Illustrated

TPS

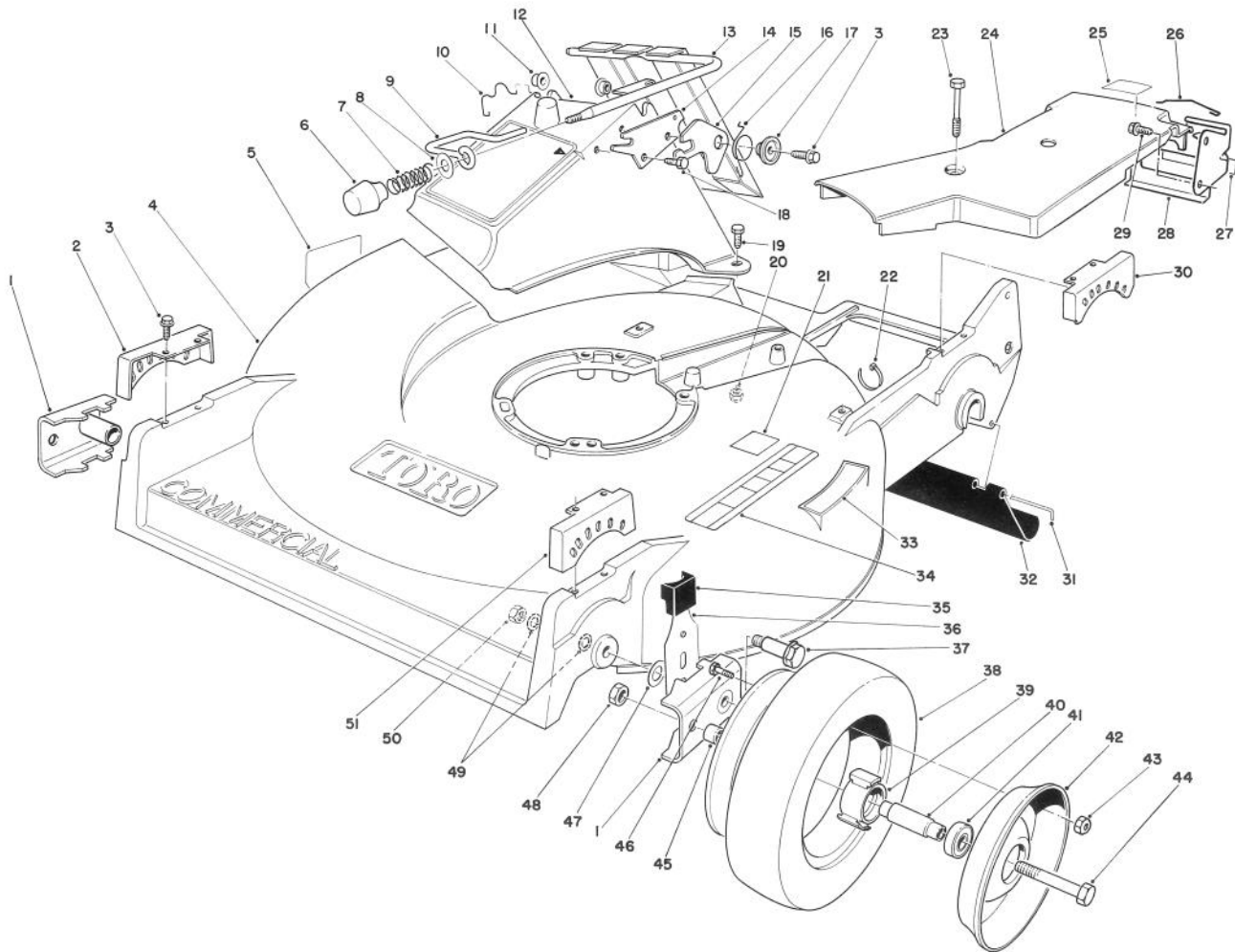


T-0733

HOUSING ASSEMBLY (Model 22030) (Continued)

Ref. No.	Part No.	Description	No. Used	Ref. No.	Part No.	Description	No. Used
34	47-2900	Bushing	2	48	53-7780	Plate - Wheel Half	8
35	47-2890	Bushing	2	49	3296-42	Nut - Lock	16
36	36-4780	Washer - Thrust	2	50	323-12	Screw - Cap, Hex. Hd.	4
37	32121-108	Pin - Roll	2	51	52-2480	Spacer - Wheel	4
38	32152-2	Nut - Lock	4	52	321-2	Screw - Cap, Hex. Hd.	16
39	33-3208	Rod - Shield	1	53	257-3	Washer - Pivot	2
40	44-0580	Shield - Rear, Safety	1	54	40-1940	Washer - Hardened	4
41	46-7370	Decal - Step Pad	1	55	52-3620	Nut - Lock	2
42	66-7560	Spring Arm Assy. Front	2	56	49-8760	Quadrant - Front, L.H.	1
43	27-6231	Screw - Pivot	2	*	53-7720	Wheel & Tire Assembly (Incl. Ref. #44-49 & 52)	4
44	53-7740	Tire	4	*	11-5639	Chute & Door Assembly (Incl. Ref. #3 & 6-20)	1
45	52-2410	Hub - Support, Bearing	4				
46	52-2440	Spacer - Bearing	4				
47	52-2450	Bearing	8				

*Not Illustrated



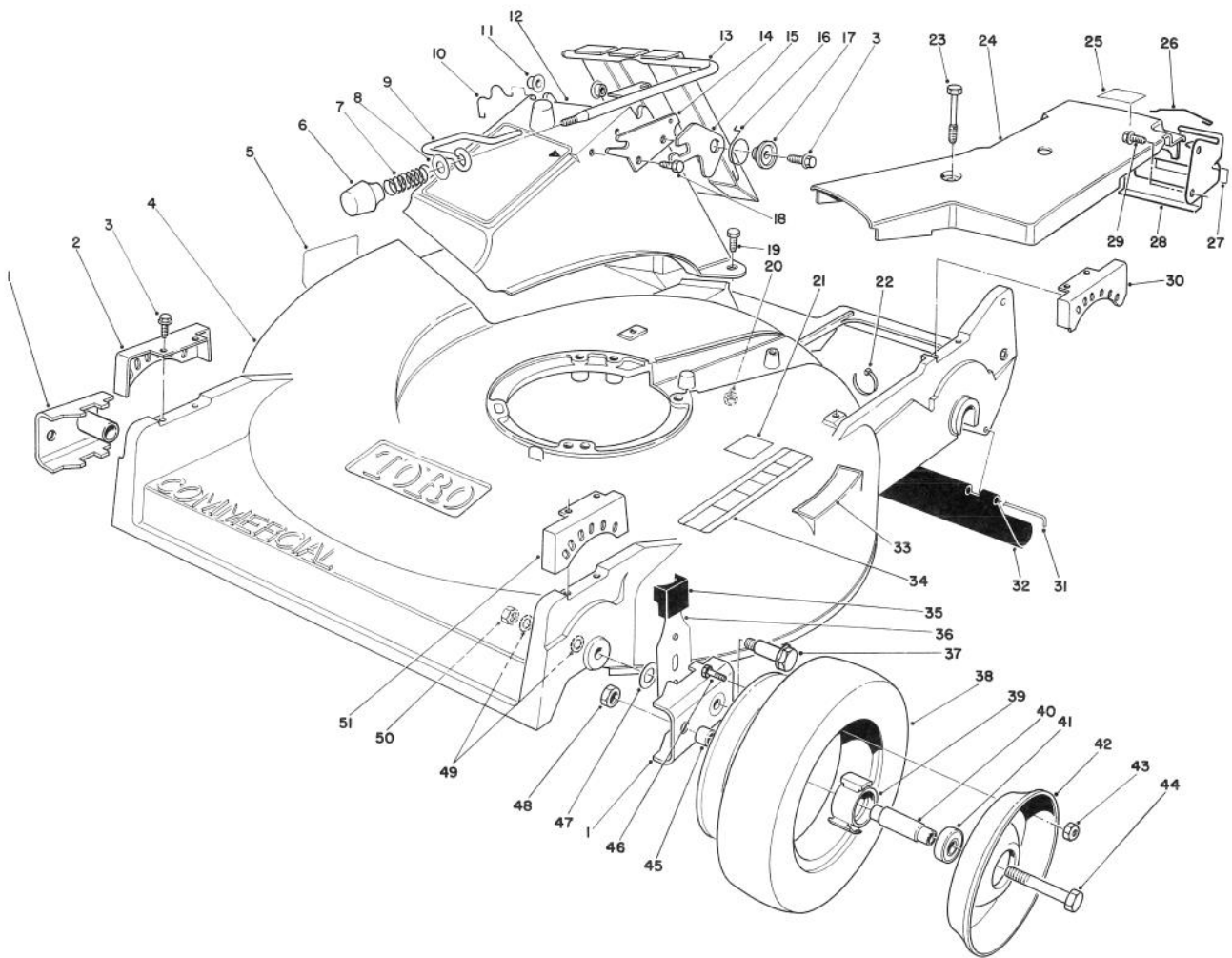
T-1098

HOUSING ASSEMBLY (Model 22035)

Ref. No.	Part No.	Description	No. Used
1	61-8300	Pivot Arm Assembly	2
2	49-8770	Quadrant - Front, R.H.	1
3	49-2040	Screw - Thread Forming	9
4	14-2499	Housing - Commercial (Incl. Ref. #5, 21, & 33-34)	1
5	39-5770	Decal - Danger	1
6	233-37	Knob	1
7	23-0920	Spring - Compression	1
8	3256-25	Washer	1
9	23-0940	Latch - Door	1
10	33-4830	Retainer - Door	1
11	23-0880	Bushing	2
12	36-1350	Chute - Discharge	1
13	33-5660	Handle - Door	1
14	23-1040	Plate - Latch	1
15	42-4010	Latch - Safety	1
16	33-4860	Spring - Torsion	1
17	43-4840	Latch - Spacer	1
18	32104-17	Screw - Self Tapping	1
19	321-7	Screw - Cap, Hex. Hd.	2
20	3296-42	Nut - Lock	2
21		Decal - Safety Standard	1
22	3290-378	Tie - Cable	1

Ref. No.	Part No.	Description	No. Used
23	37-7260	Screw - Special	2
24	74-1770	Cover - Belt	1
25	52-2620	Label - Grease	1
26	46-7030	Retainer - Cable	1
27	74-1970	Decal - Traction Drive	1
28	74-1740	Bracket - Traction Adj.	1
29	32144-70	Screw - Thread Forming	1
30	49-8740	Quadrant - Rear, L.H.	1
*	49-8750	Quadrant - Rear, R.H.	1
31	33-3208	Rod - Shield	1
32	44-0580	Shield - Rear, Safety	1
33	46-7370	Decal - Step Pad	1
34	71-1280	Decal - Safety Instructions	1
35	25-7740	Knob - Arm	2
36	66-7560	Spring Arm Assy. Front	2
37	27-6231	Screw - Pivot	2
38	53-7740	Tire	2
39	52-2410	Hub - Support, Bearing	2
40	52-2440	Spacer - Bearing	2
41	52-2450	Bearing - Wheel	4
42	53-7780	Plate - Wheel Half	4
43	3296-42	Nut - Lock	8
44	323-12	Screw - Cap, Hex. Hd.	2

*Not Illustrated

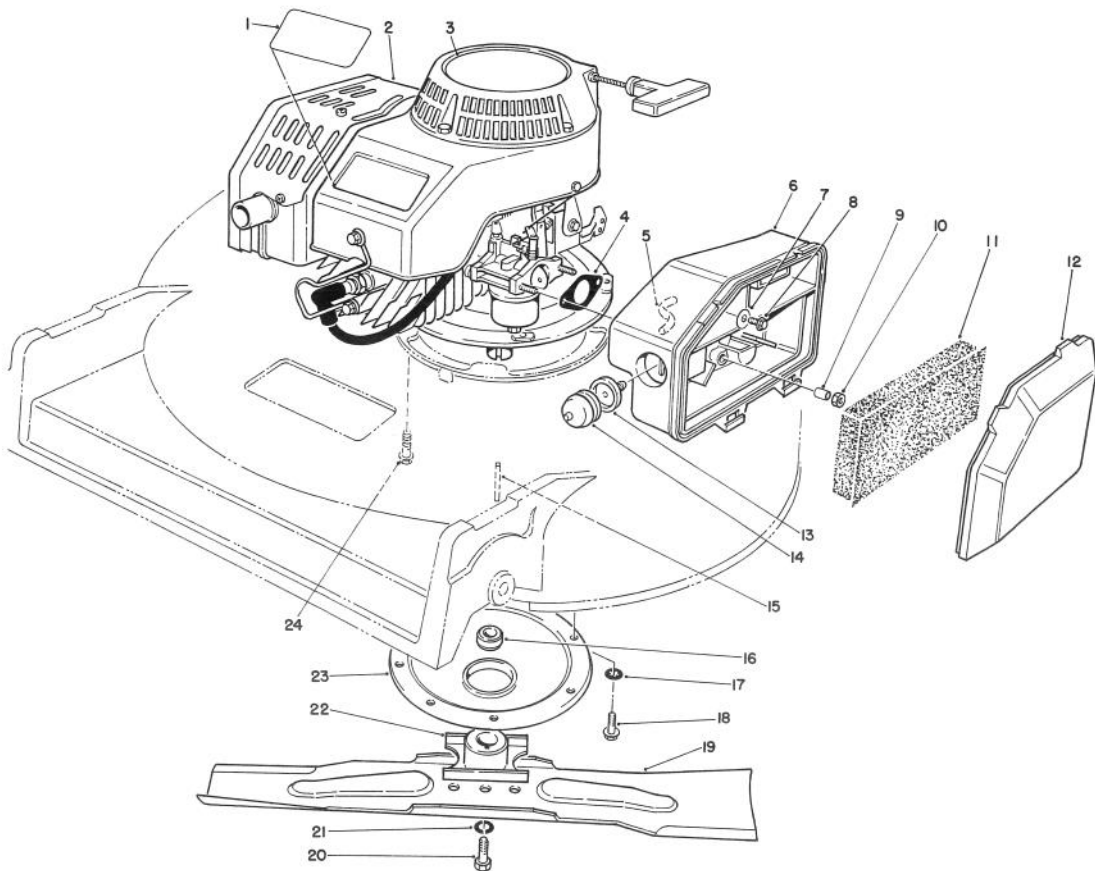


T-1098

HOUSING ASSEMBLY (Model 22035) (Continued)

Ref. No.	Part No.	Description	No. Used	Ref. No.	Part No.	Description	No. Used
45	52-2480	Spacer - Wheel	2	51	49-8760	Quadrant - Front, L.H.	1
46	321-2	Screw - Cap, Hex. Hd.	8	*	53-7720	Wheel & Tire Assembly (Incl. Ref. #38-43 & 46)	2
47	257-3	Washer - Pivot	2	*	11-5639	Chute & Door Assembly (Incl. Ref. #3 & 6-20)	1
48	32152-2	Nut - Lock	2				
49	40-1940	Washer - Hardened	4				
50	52-3620	Nut - Lock	2				

*Not Illustrated

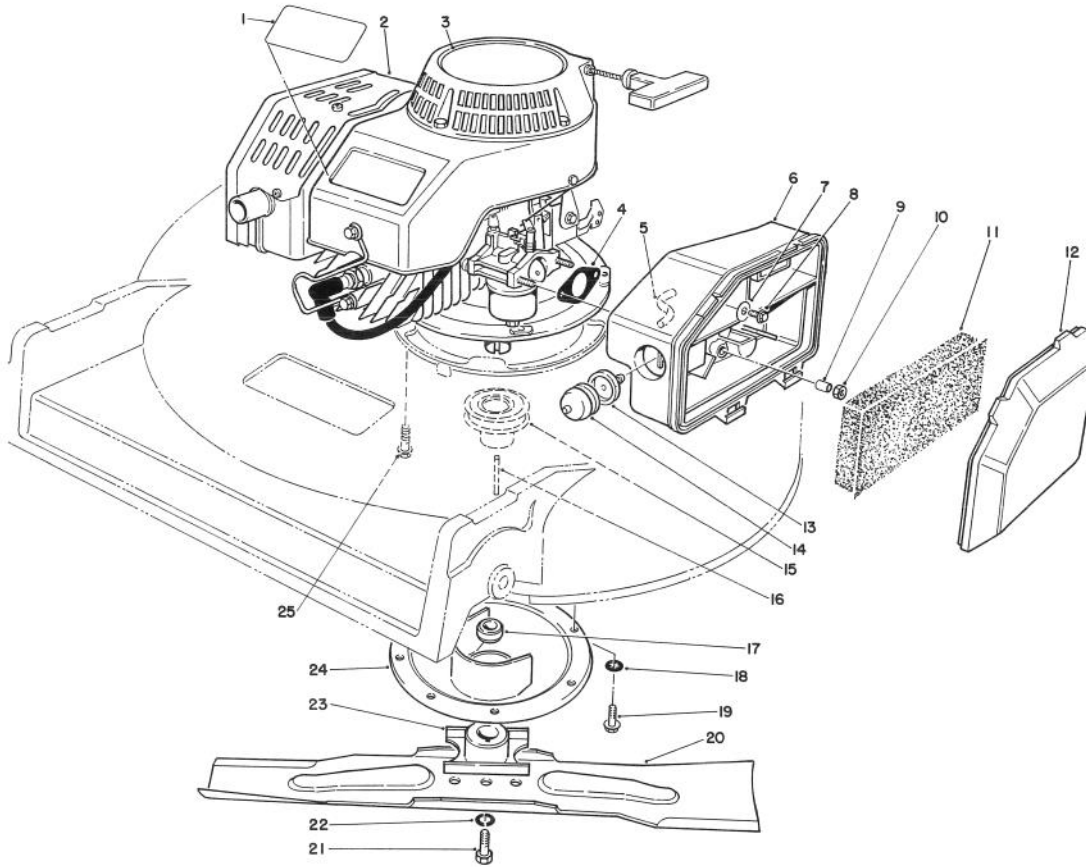


T-1101

ENGINE ASSEMBLY (Model 22030)

Ref. No.	Part No.	Description	No. Used
1	71-1260	Decal - Pro Line	1
2	61-8062	Engine - Complete	1
3	77-0040	Decal - Recoil	1
4	81-0090	Gasket	1
5	44-3172	Hose - Primer	1
6	63-9330	Body - Air Cleaner	1
7	3256-16	Washer	1
8	51-2690	Screw - Hex. Flange Hd.	1
9	62-3980	Sleeve	2
10	50-7180	Nut - Lock	2
11	63-9380	Filter - Foam	1
12	63-9340	Cover - Air Cleaner	1
13	44-2750	Body - Primer	1

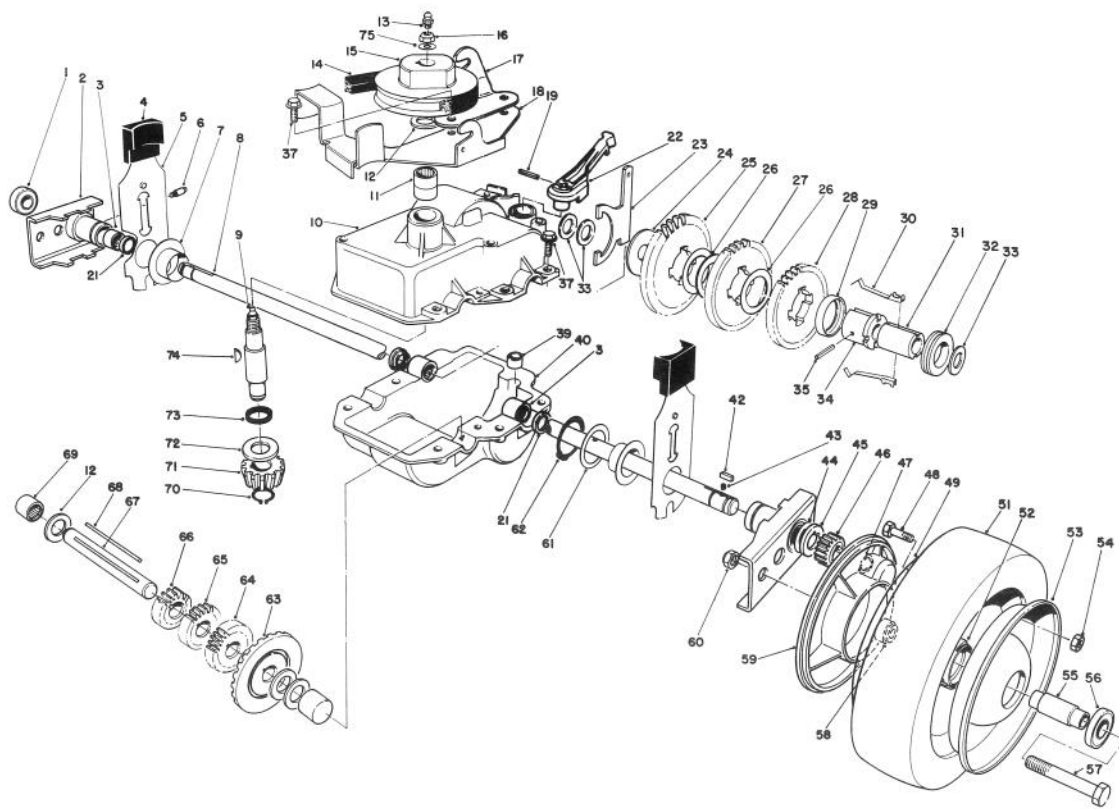
Ref. No.	Part No.	Description	No. Used
14	66-7460	Bulb - Primer	1
15	27-8590	Key - Square	1
16	52-2190	Spacer - Retainer, Blade	1
17	3254-6	Washer - Internal Tooth	3
18	32144-70	Screw - Thread Forming	3
19	62-7700	Blade	1
20	26-0670	Screw - Blade	1
21	3253-22	Washer - Lock	1
22	52-2170	Retainer - Blade	1
23	48-2591	Protector - Crankshaft	1
24	66-9300	Screw - Hex. Flange Hd.	4



T-1099

ENGINE ASSEMBLY (Model 22035)

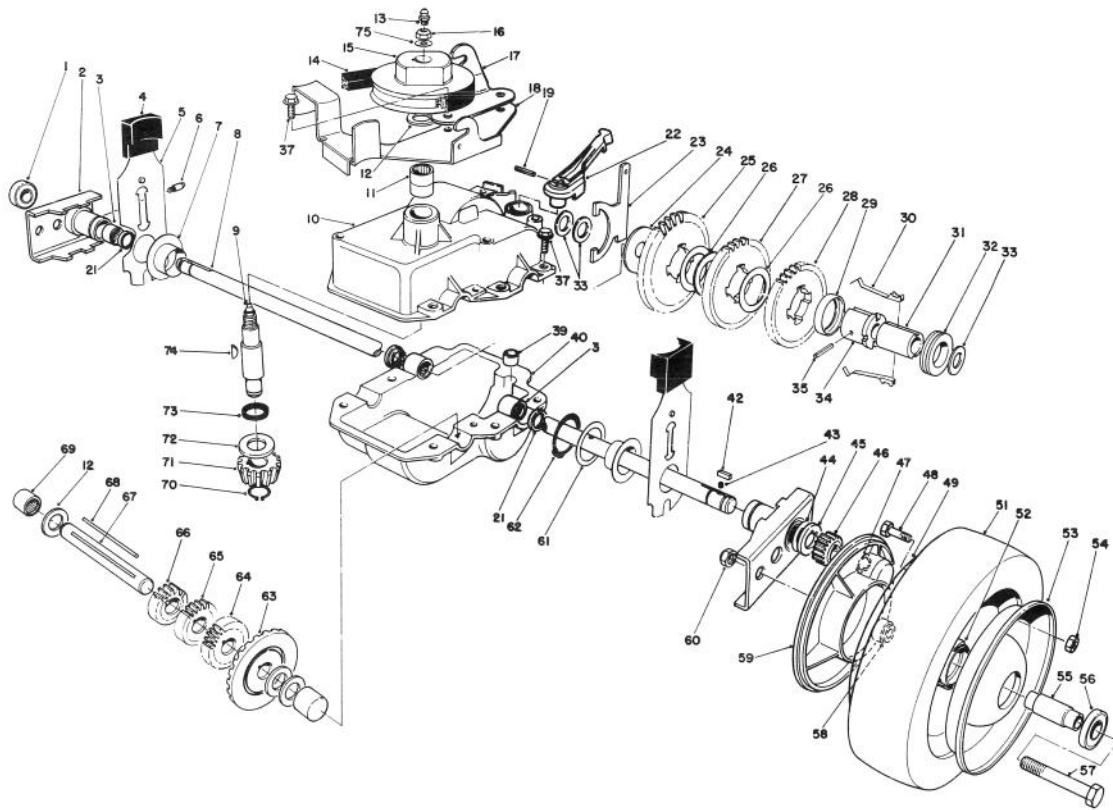
Ref. No.	Part No.	Description	No. Used	Ref. No.	Part No.	Description	No. Used
1	71-1260	Decal - Pro Line	1	14	66-7460	Bulb - Primer	1
2	61-8062	Engine - Complete	1	15	46-7910	Pulley - Driver	1
3	77-0040	Decal - Recoil	1	16	27-6300	Key - Square	1
4	81-0090	Gasket	1	17	52-2190	Spacer - Retainer, Blade	1
5	44-3172	Hose - Primer	1	18	3254-6	Washer - Internal Tooth	3
6	63-9330	Body - Air Cleaner	1	19	32144-70	Screw - Thread Forming	3
7	3256-16	Washer	1	20	62-7700	Blade	1
8	51-2690	Screw - Hex. Flange Hd.	1	21	26-0670	Screw - Blade	1
9	62-3980	Sleeve	2	22	3253-22	Washer - Lock	1
10	50-7180	Nut - Lock	2	23	52-2170	Retainer - Blade	1
11	63-9380	Filter - Foam	1	24	65-5860	Protector - Crankshaft	1
12	63-9340	Cover - Air Cleaner	1	25	66-9300	Screw - Hex. Flange Hd.	4
13	44-2750	Body - Primer	1				



T-0678

GEAR CASE ASSEMBLY (Model 22035)

Ref. No.	Part No.	Description	No. Used	Ref. No.	Part No.	Description	No. Used
1	52-2450	Bearing	2	22	74-1960	Lever - Shift	1
2	74-1850	Pivot Arm Assembly (Incl. Ref. #1, 3, 6 & 21)	2	23	60-8870	Yoke - Shift	1
3	48-2060	Bearing - Needle	4	24	29-9690	Washer - Flat	1
4	25-7740	Knob - Arm	2	25	46-3560	Gear - 52T	1
5	66-7561	Spring Arm Assy. - Rear	2	26	36-4770	Spacer - Gear	3
6	302-62	Fitting - Grease	2	27	29-9271	Gear - 42T	1
7	48-2170	Cap - End	2	28	42-4740	Gear - 38T	1
8	74-1890	Shaft - Output	1	29	55-8020	Retainer - Key	1
9	13-5149	Shaft - Input (Incl Ref. #13)	1	30	29-9330	Key - Shift	2
10	13-9739	Upper Case Assembly (Incl. Ref. #11 & 73)	1	31	39-6720	Sleeve	1
11	47-7270	Bearing - Needle	2	32	29-9340	Collar - Shift	1
12	36-4792	Washer - Thrust	4	33	36-4780	Washer - Flat	3
13	302-63	Fitting - Grease	1	34	55-8010	Sleeve - Gear	1
14	36-8070	V-Belt	1	35	3285-19	Pin - Groove	1
15	39-6740	Pulley	1	37	49-2040	Screw - Self Tapping	8
16	3296-5	Nut - Lock	1	39	29-9570	Bushing - Yoke	1
17	74-1750	Bracket - Traction, Engage	1	40	74-1920	Case - Lower	1
18	49-8461	Bracket - Guide, Belt	1	42	39-9680	Key	2
19	32121-99	Pin - Roll	1	43	39-9650	Spring	2
21	47-6730	Seal	4	44	49-7700	Washer - Thrust, Keyed	2
				45	62-3830	Washer - Thrust, Keyed	2
				46	39-9160	Pinion	2
				47	32151-68	Ring - Klip	4



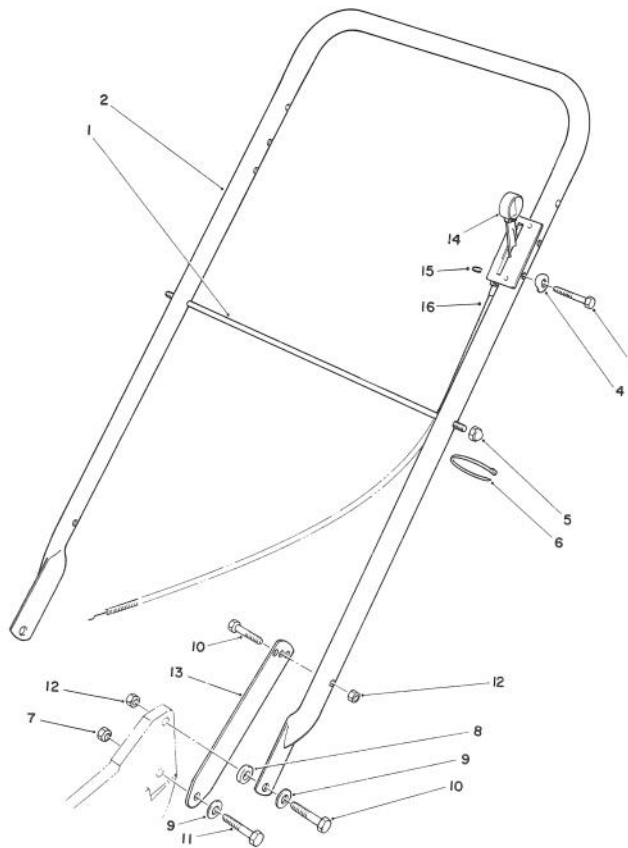
T-0678

GEAR CASE ASSEMBLY (Model 22035) (Continued)

Ref. No.	Part No.	Description	No. Used
48	321-2	Screw - Cap, Hex. Hd.	8
49	53-7750	Wheel - Half	2
51	53-7740	Tire	2
52	52-2410	Hub - Support, Bearing	2
53	53-7780	Plate - Wheel Half	2
54	3296-42	Nut - Lock	8
55	52-2440	Spacer - Bearing	2
56	52-2450	Bearing - Wheel	4
57	323-12	Screw - Cap, Hex. Hd.	2
58	74-1650	Spacer - Wheel	2
59	74-1640	Cover - Wheel	2
60	32152-2	Nut - Lock	2
61	74-1810	Washer	2
62	32151-36	Ring - Retaining	2
63	74-1760	Gear - Bevel	1
64	39-6650	Gear - 18T	1

Ref. No.	Part No.	Description	No. Used
65	46-3550	Gear - 14T	1
66	46-3540	Gear - 12T	1
67	53-7950	Shaft - Intermediate	1
68	39-7842	Key - Square	1
69	252-103	Bearing - Closed	2
70	32151-57	Ring - Retaining	1
71	39-6660	Pinion - Bevel	1
72	47-2910	Washer - Thrust	1
73	47-7260	Seal	1
74	3257-1	Key - Woodruff	2
75	3256-45	Washer - Flat	1
*	74-1861	Gear Case Assembly (Incl. Ref. #3, 8-13, 15-18, 21, 23-40 & 63-74)	1
*	74-1720	Wheel & Tire Assembly (Incl. Ref. #48-49 & 51-56)	2

*Not Illustrated

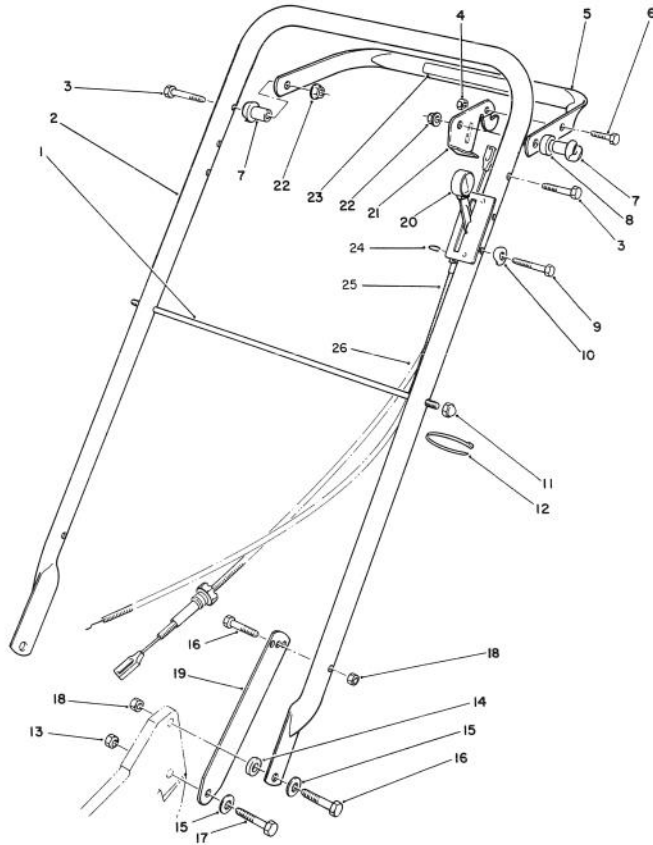


T-0736

HANDLE ASSEMBLY (Model 22030)

Ref. No.	Part No.	Description	No. Used
1	48-2810	Rod - Support, Bag	1
2	66-7420	Handle	1
3	321-13	Screw - Cap, Hex. Hd.	2
4	3-7501	Washer - Curved	2
5	32111-7	Nut - Acorn	2
6	3290-378	Tie - Cable	1
7	3296-47	Nut - Lock	2
8	26-4840	Spacer	2
9	3290-456	Washer	4

Ref. No.	Part No.	Description	No. Used
10	322-7	Screw - Cap, Hex. Hd.	4
11	322-6	Screw - Cap, Hex. Hd.	2
12	3296-29	Nut - Lock	4
13	65-5830	Latch - Handle	2
14	82-9951	Bracket - Control, Throttle	1
15	32151-86	E-Ring	1
16	70-1061	Cable - Throttle	1

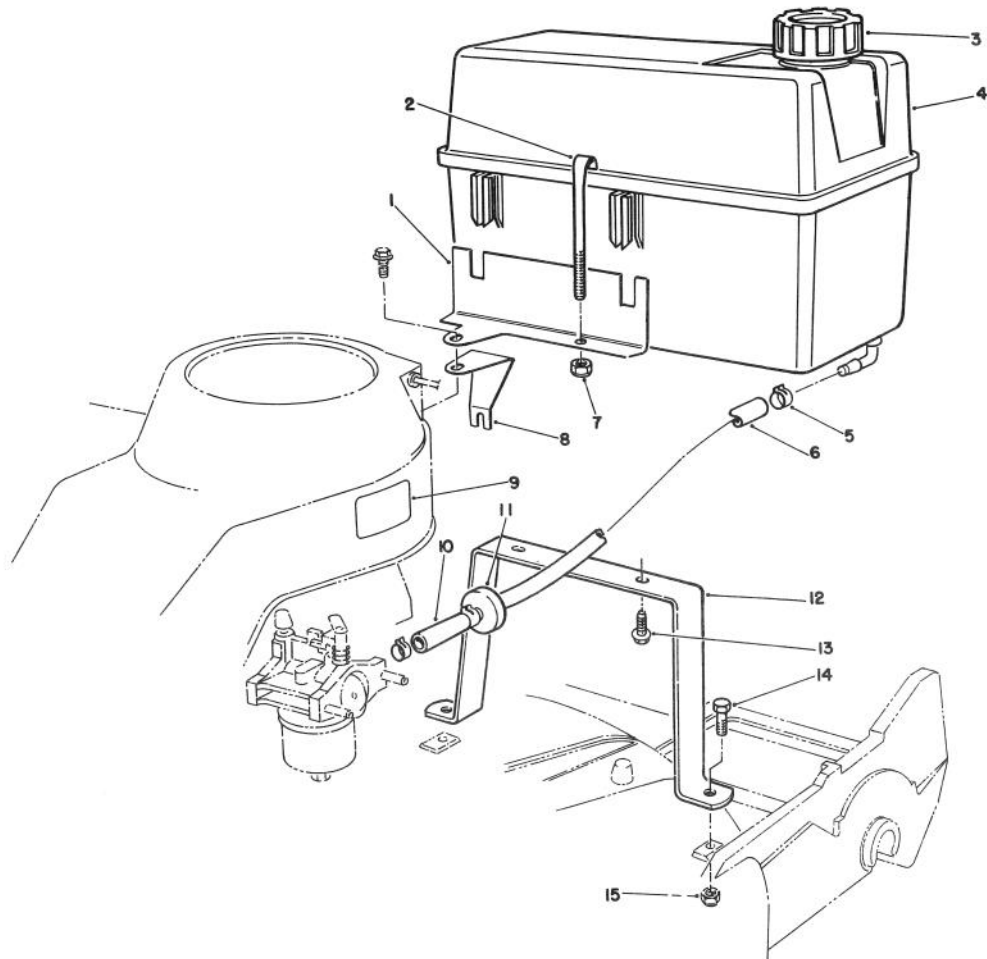


T-0711

HANDLE ASSEMBLY (Model 22035)

Ref. No.	Part No.	Description	No. Used
1	48-2810	Rod - Support, Bag	1
2	66-7420	Handle	1
3	322-10	Screw - Cap, Hex. Hd.	2
4	3296-42	Nut - Lock	1
5	61-8270	Bar - Control	1
6	321-4	Screw - Cap, Hex. Hd.	1
7	49-1630	Support - Spacer	2
8	256-276	Spacer	1
9	321-13	Screw - Cap, Hex. Hd.	2
10	3-7501	Washer - Curved	2
11	32111-7	Nut - Acorn	2
12	3290-378	Tie - Cable	1
13	3296-47	Nut - Lock	2

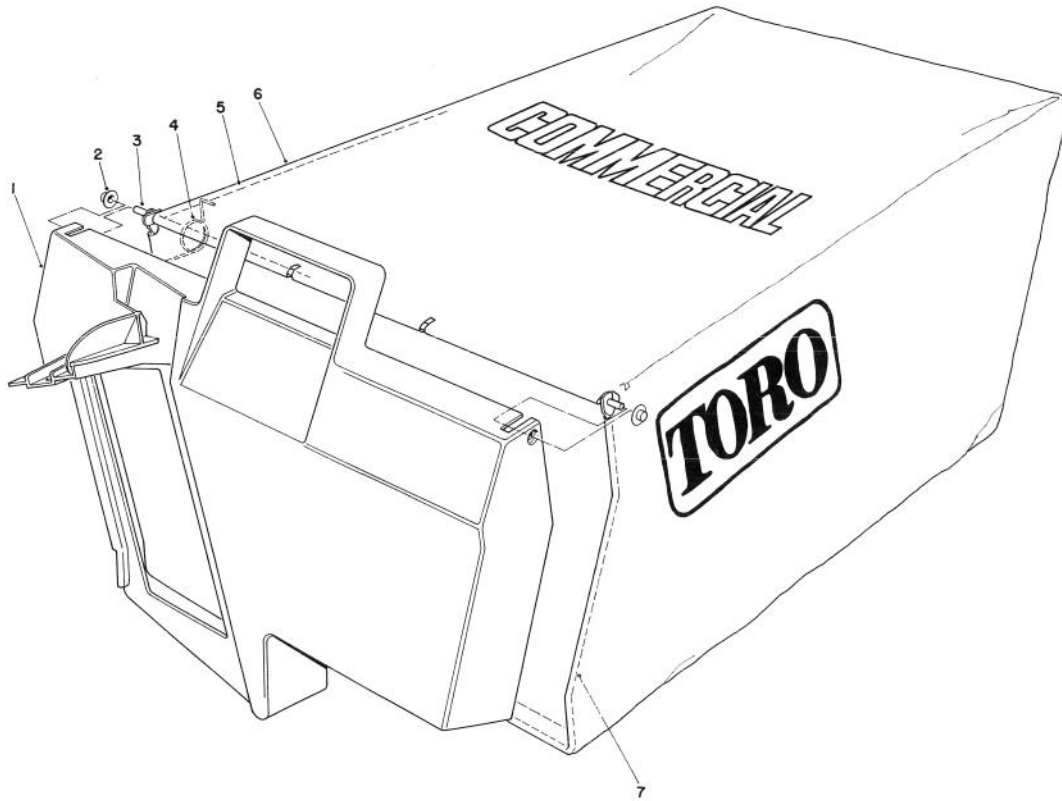
Ref. No.	Part No.	Description	No. Used
14	26-4840	Spacer	2
15	3290-456	Washer - Flat	4
16	322-7	Screw - Cap, Hex. Hd.	4
17	322-6	Screw - Cap, Hex. Hd.	2
18	3296-29	Nut - Lock	4
19	65-5830	Latch - Handle	2
20	82-9951	Bracket - Control, Throttle	1
21	74-1820	Lever - Control	1
22	3296-58	Nut - Lock	2
23	71-1290	Decal - Control, Traction	1
24	32151-86	E-Ring	2
25	70-1061	Cable - Throttle	1
26	74-1791	Cable - Traction	1



T-1097

GAS TANK ASSEMBLY

Ref. No.	Part No.	Description	No. Used	Ref. No.	Part No.	Description	No. Used
1	74-2110	Bracket - Tank	1	9	62-7600	Decal - Fuel	1
2	77-2840	Retainer - Tank, Fuel	1	10	51-3211	Hose - Fuel	1
3	55-3575	Cap - Gas	1	11	56-6360	Filter - Fuel	1
4	82-8460	Tank - Gas	1	12	74-2000	Mount - Tank, Bottom	1
5	2412-95	Clamp - Fuel Line	4	13	46-8091	Screw - Hex. Washer Hd.	2
6	51-3214	Hose - Fuel	1	14	322-5	Screw - Cap, Hex. Hd.	2
7	3296-42	Nut - Lock	1	15	3296-29	Nut - Lock	2
8	77-0520	Support - Bracket	1				

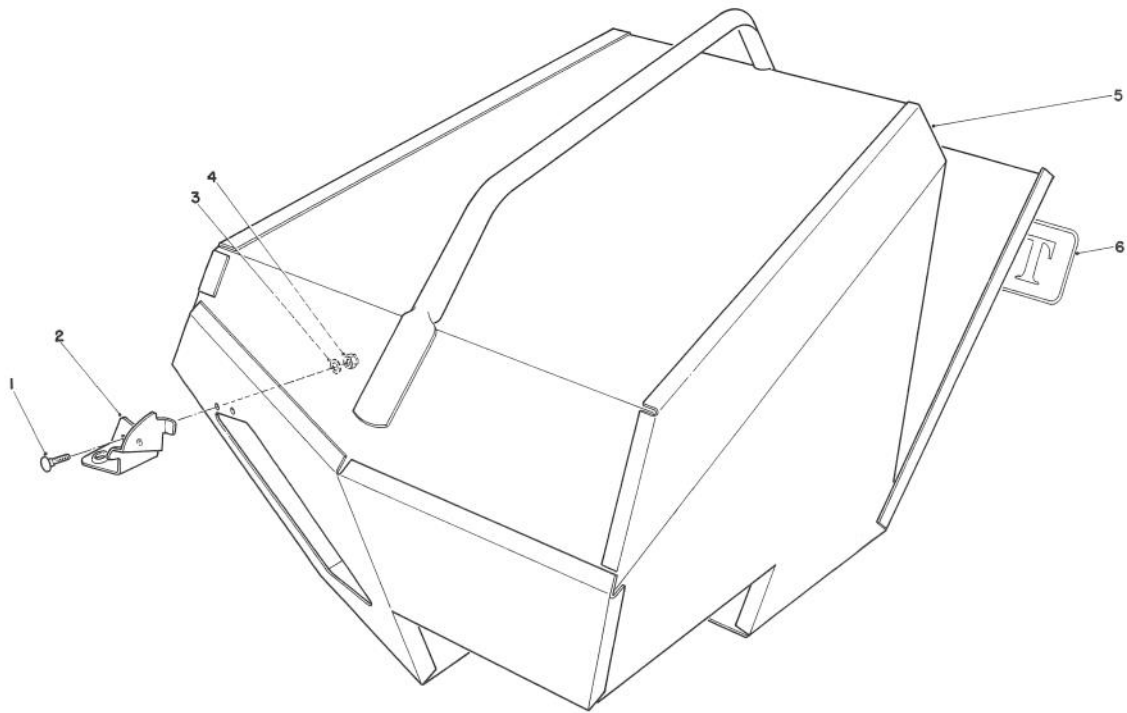


GRASS BAG ASSEMBLY No. 11-5609

T-1100

Ref. No.	Part No.	Description	No. Used
1	48-2840	Door - Bag, Grass	1
2	3290-422	Nut - Push, Washer Cap	2
3	33-4820	Hinge - Door, Bag	1
4	36-6910	Spring	2

Ref. No.	Part No.	Description	No. Used
5	42-4030	Frame - Bag, Upper	1
6	8-2759	Bag - Grass	1
7	42-4020	Frame - Bag	1

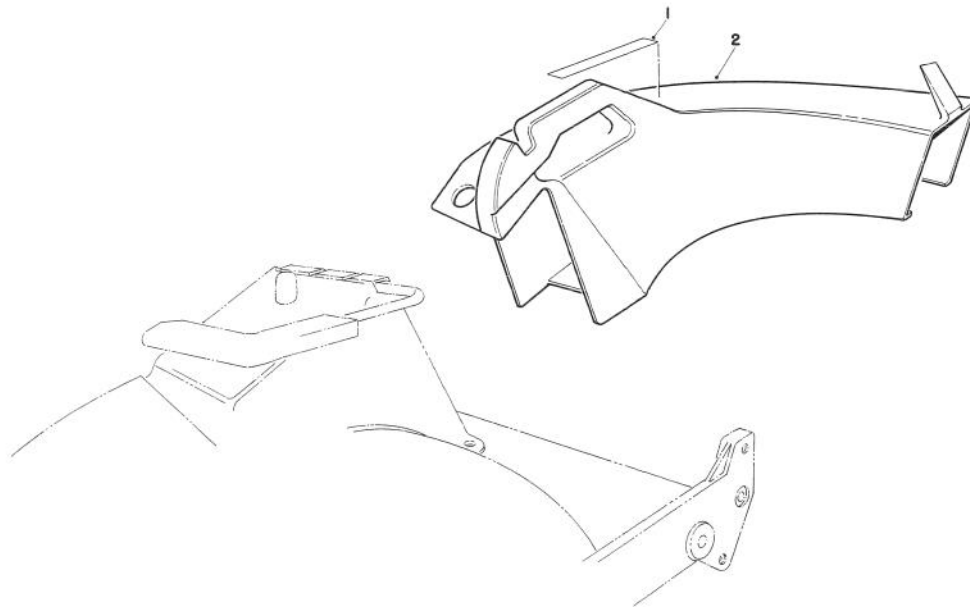


T-0715

STEEL GRASS CATCHER (Model 22099) (Optional)

Ref. No.	Part No.	Description	No. Used
1	3229-25	Bolt - Carriage	2
2	52-4990	Bracket - Latch	1
3	3256-1	Washer - Flat	2

Ref. No.	Part No.	Description	No. Used
4	3296-42	Nut - Lock	2
5	52-5020	Bag - Steel	1
6	43-5110	Decal - Toro	1

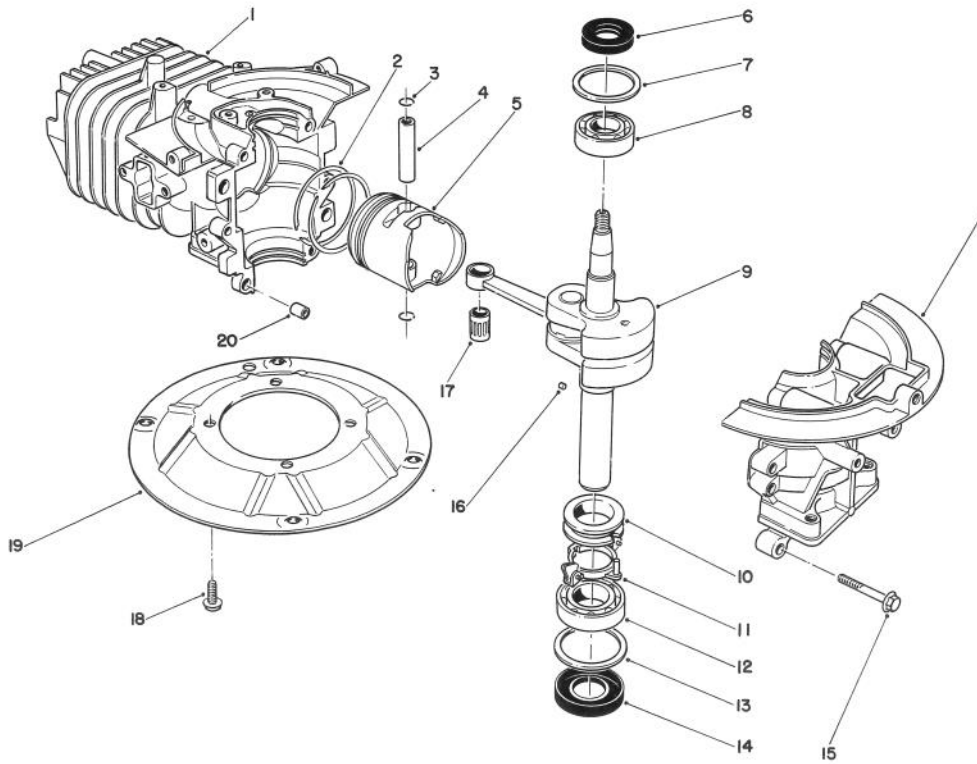


T-0716

SIDE DISCHARGE CHUTE MODEL No. 59168 (Optional)

Ref. No.	Part No.	Description	No. Used
1	76-4780	Decal - Caution	1

Ref. No.	Part No.	Description	No. Used
2		Chute - Discharge (Incl. Ref. #1)	1



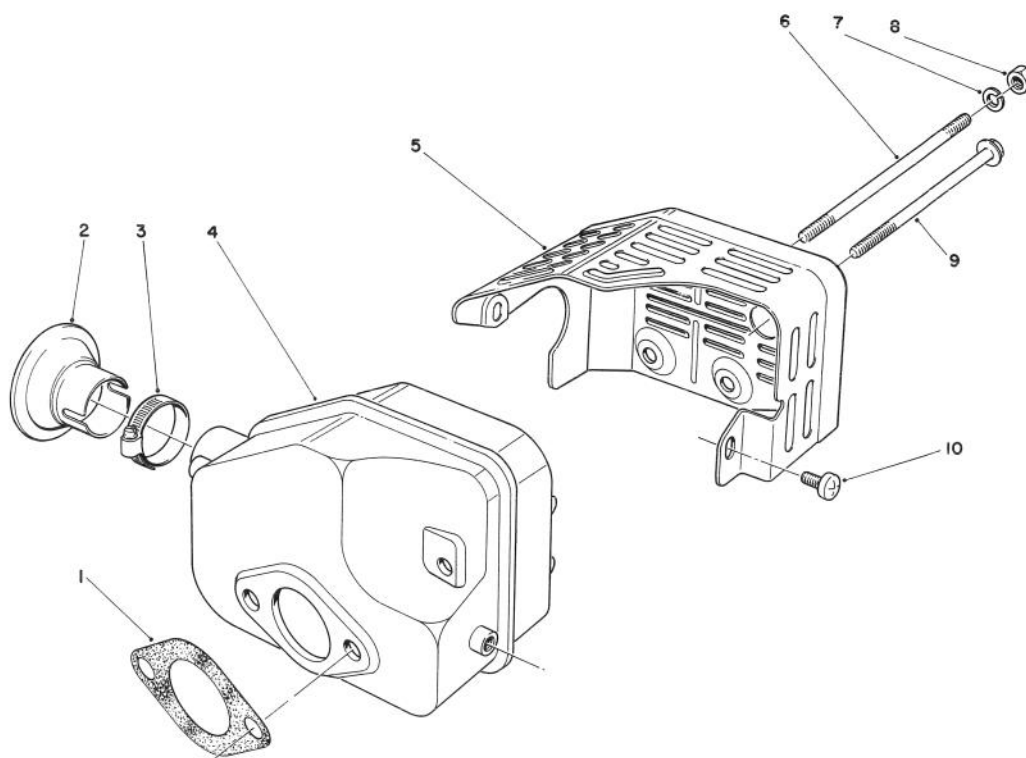
T-0663

CRANKSHAFT ASSEMBLY (Model No. 47PL0-3)

Ref. No.	Part No.	Description	No. Used
1	81-2800	Crankcase/Cylinder Assy.	1
2	81-0590	Piston Ring Set	1
3	81-0620	Circlip	2
4	81-0600	Pin - Wrist	1
5	81-2140	Piston - 58mm	1
6	81-0720	Seal - Oil, Upper	1
7	81-0710	Washer - Thrust, Upper	1
8	81-0690	Bearing - Upper 20mm	1
9	81-4680	Crankshaft/Connecting Rod Assembly	1
10	81-0770	Spacer - Governor	1

Ref. No.	Part No.	Description	No. Used
11	81-0750	Bracket - Arm, Governor	1
12	81-0700	Bearing - Lower 25mm	1
13	81-0730	Washer - Thrust, Lower	1
14	81-0740	Seal - Oil, Lower	1
15	81-0540	Bolt 30mm Lg.	5
16	81-0760	Pin - Crankshaft	1
17	81-0610	Bearing - Wrist Pin	1
18	81-0570	Bolt	4
19	81-0560	Plate - Mounting	1
20	81-0520	Pin - Crankcase	2
*	12-8099	Short Block	1

*Not Illustrated



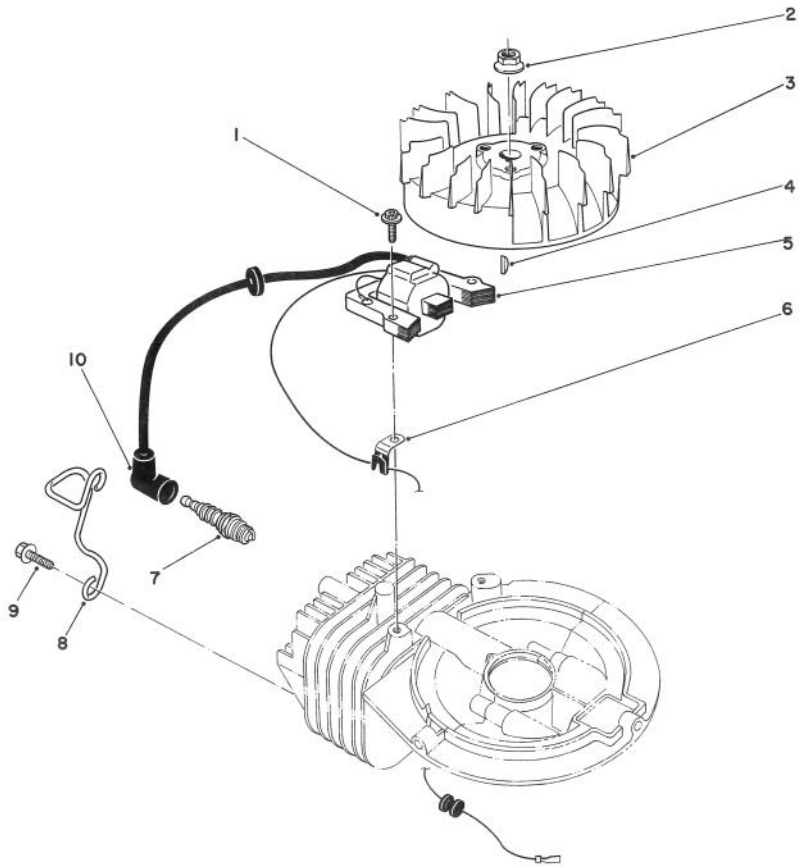
T-0667

MUFFLER ASSEMBLY (Model No. 47PL0-3)

Ref. No.	Part No.	Description	No. Used
1	81-1080	Gasket - Muffler	1
2	81-0200	Spark Arrester (Optional)	1
†3		Clamp	1
4	81-5690	Muffler	1
5	81-2450	Cover - Muffler	1

Ref. No.	Part No.	Description	No. Used
6	81-1100	Bolt	2
7	81-1120	Washer - Lock	2
8	81-1110	Nut	2
9	81-1150	Bolt - Self Tapping	1
10	81-1140	Screw - Phillips Hd.	2

†Obtain Locally



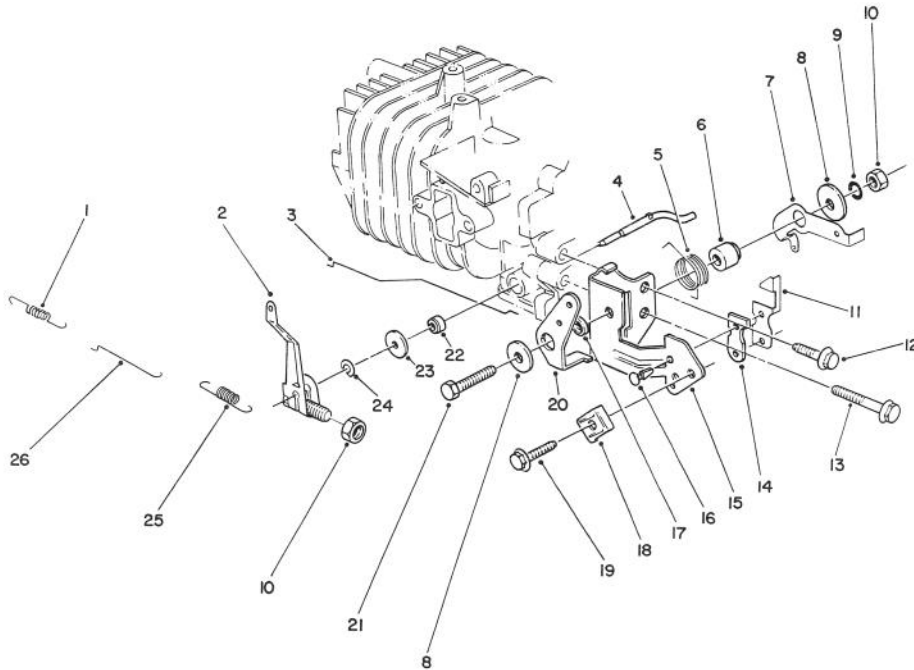
T-0664

IGNITION ASSEMBLY (Model No. 47PL0-3)

Ref. No.	Part No.	Description	No. Used
1	81-5680	Screw - Cap, Hex Hd.	2
2	81-1330	Nut	1
3	81-2810	Flywheel - Magneto	1
4	81-2370	Key - Flywheel	1
5	81-2820	Coil/Ignition Assembly	1
6	81-1480	Clamp	1

Ref. No.	Part No.	Description	No. Used
7	81-0181	Spark Plug	1
8	81-2120	Guard - Spark Plug	1
9	81-2350	Bolt - Self Tapping (20mm Lg.)	2
10	81-1500	Cap Assembly - Spark Plug	1
*	41-7650	Puller - Flywheel	1

*Not Illustrated

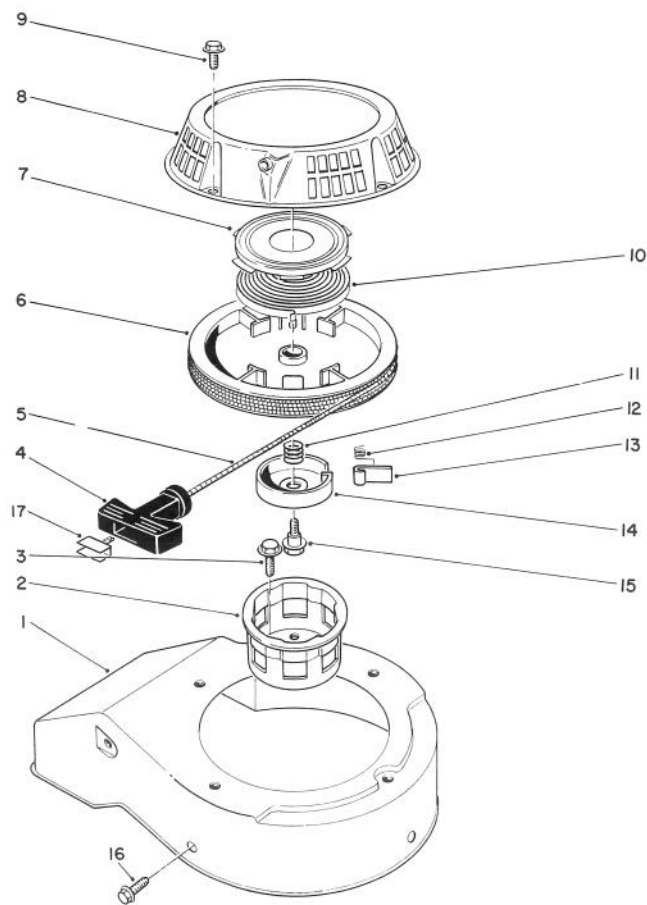


c-0564

GOVERNOR ASSEMBLY (Model No. 47PL0-3)

Ref. No.	Part No.	Description	No. Used
1	81-0920	Spring - Carburetor Rod	1
2	81-5420	Governor Arm/Bolt Assy.	1
3	81-5410	Rod - Choke	1
4	81-2880	Shaft - Governor	1
5	81-2460	Spring - Lever, Choke	1
6	81-1770	Spacer - Lever, Governor	1
7	81-2850	Lever - Governor	1
8	81-1750	Washer - Lever, Choke	2
9	81-1450	Washer - Lock	1
10	81-0900	Nut	2
11	81-1840	Terminal - Kill Switch	1
12	81-1170	Bolt - Self Tapping	1
13	81-0540	Bolt	1

Ref. No.	Part No.	Description	No. Used
14	81-1830	Insulator - Kill Switch	1
15	81-2420	Bracket - Throttle	1
16	81-4530	Rivet - Kill Switch	2
17	81-2470	Spacer - Lever, Choke	1
18	81-2430	Clamp - Cable	1
19	50-0130	Bolt - Clamp, Cable	1
20	81-1710	Lever - Choke	1
21	81-1730	Bolt - Bracket, Throttle	1
22	81-0850	Seal - Shaft, Governor	1
23	81-0860	Washer	1
24	81-0870	Ring - Retaining	1
25	81-2830	Spring - Governor	1
26	81-0910	Rod - Carburetor	1



T-1102

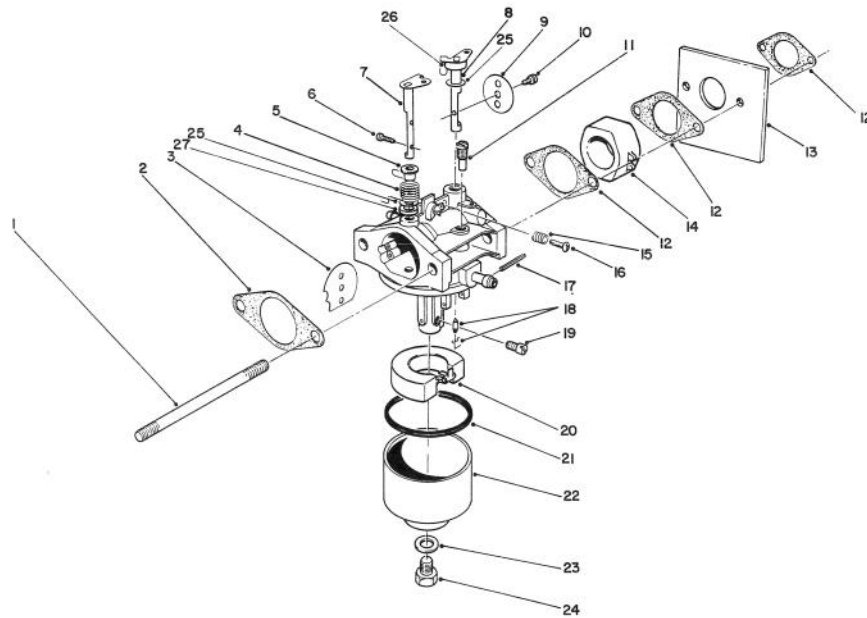
RECOIL ASSEMBLY (Model No. 47PL0-3)

Ref. No.	Part No.	Description	No. Used
1	81-2080	Cover - Fan, Cooling	1
2	81-2170	Cup - Pulley, Starter	1
3	81-1300	Bolt	3
4	81-1630	Handle - Recoil	1
5	81-1270	Rope	1
6	81-1210	Pulley - Rope	1
7		Retainer - Spring, Recoil	1
8	81-2100	Case - Starter	1
9	81-1280	Bolt	4
10		Spring - Recoil	1
11	81-1240	Spring - Compression	1

Ref. No.	Part No.	Description	No. Used
12	81-1220	Spring - Dog	1
13	81-1230	Dog - Starter	1
14	81-1250	Retainer - Dog	1
15	81-1260	Bolt - Shoulder	1
16	53-1340	Bolt - Self Tapping (15mm Lg.)	3
17	81-5760	Insert - Handle, Recoil	1
*	81-5940	Starter Assembly (Incl. Ref. #4-15)	1
*	81-2300	Spring & Retainer Assembly (Incl. Ref. #7 & 10)	1

*Not Illustrated
AL-921977

Litho U.S.A.



C-0563

CARBURETOR ASSEMBLY (Model No. 47PL0-3)

Ref. No.	Part No.	Description	No. Used
1	81-5450	Stud Bolt, Carburetor	2
2	81-0090	Gasket	1
3	81-0240	Valve - Choke	1
4	81-0230	Spring - Choke	1
5	81-0220	Bushing - Choke	1
6	81-2160	Screw - Choke Plate	2
7	81-1950	Shaft - Choke	1
8	81-0250	Shaft - Throttle	1
9	81-0260	Valve - Throttle	1
10	81-0270	Screw - Throttle	1
11	81-1030	Jet - Pilot #40	1
12	81-0780	Gasket - Carburetor	3
13	81-5490	Shield - Carburetor	1
14	81-2190	Insulator - Carburetor	1
15	81-2580	Spring - Idle Stop	1
16	50-0250	Screw - Idle Stop	1
17	81-2600	Pin - Float	1

Ref. No.	Part No.	Description	No. Used
18	81-4910	Needle Valve	1
19	81-1060	Jet - Main #75	1
*	81-2340	Jet - Main #72.5 High Alt. Above 6,000 Ft. (Optional)	A/R
20	81-0970	Float	1
21	81-1010	Gasket - Bowl, Float	1
22	81-5660	Bowl - Float	1
23	81-1020	Gasket - Capscrew, Bowl	1
24	81-5670	Capscrew - Bowl	1
25	81-2530	Seal	2
26	81-2540	Ring	1
27	81-2550	Packing	1
*	12-6379	Carburetor Kit (Incl. Ref. #2, 12, 18, 21 & 23)	1
*	81-2520	Carburetor Assy. Complete	1
*	81-5430	Carburetor Ass'y w/Primer	1

*Not Illustrated