



## Hose Kit for DFS Vac Collection System 500 Series Z Master®

Model No. 107-1633

### Parts Catalog

#### Ordering Replacement Parts

To order replacement parts, please supply the part number, the quantity, and the description of each part desired.

#### Understanding Reference Numbers

Each Identified part in an illustration has a reference number. The reference number for a part also appears in the parts list, along with other information about the part.

This catalog uses two special reference number formats, one to indicate parts in a service assembly and another to indicate the quantity of a given part in an illustration.

#### Service Assembly Reference Numbers

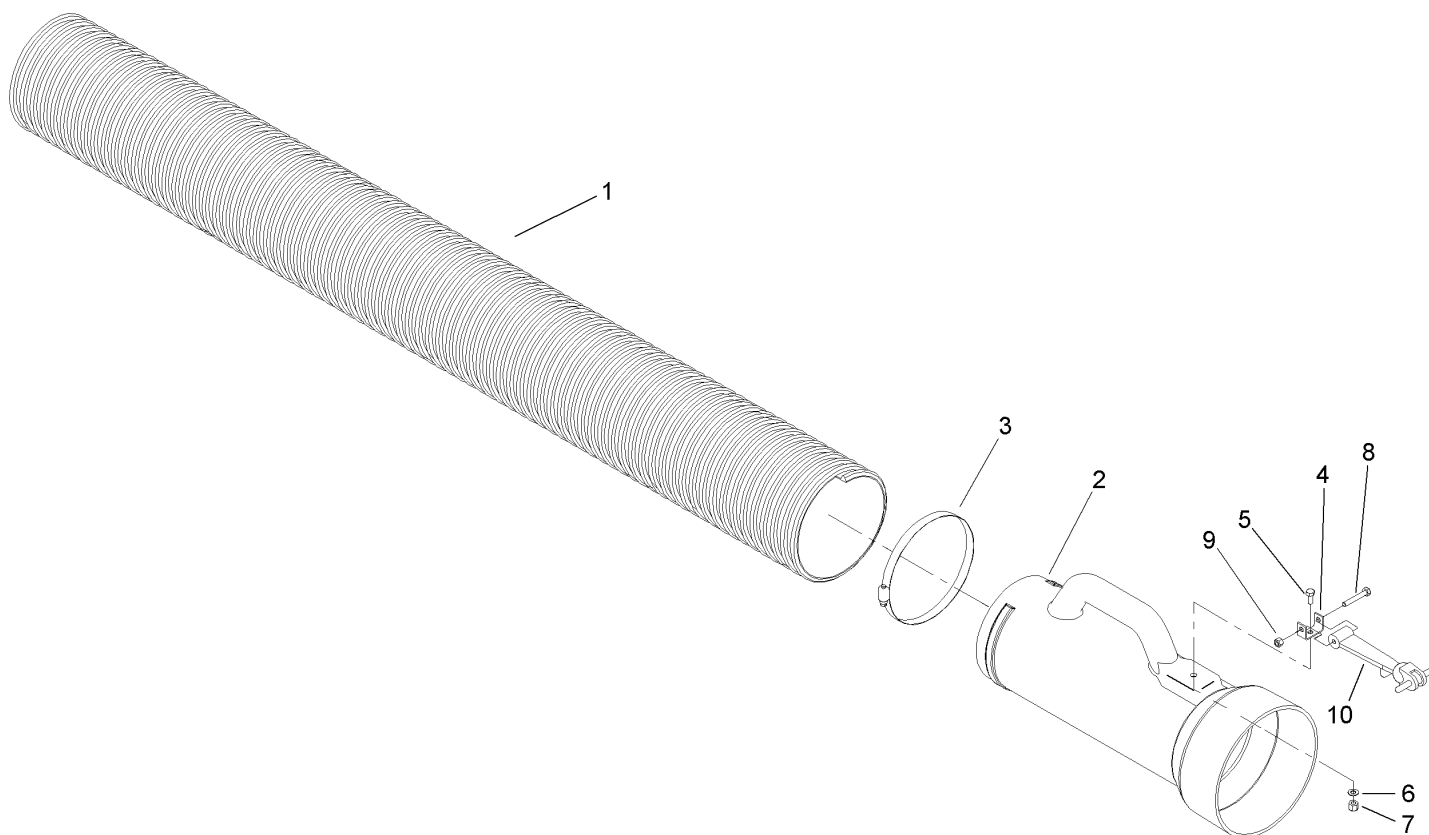
Parts in service assemblies have reference numbers in the form a:b. The a represents the reference number of the entire service assembly and the b represents a sequential number unique to each part within the service assembly.

For example, a wheel assembly might be identified by reference number 6, the tire by 6:1, the valve by 6:2, and the wheel by 6:3. When you order the assembly identified by reference number 6, you receive all parts identified by reference numbers 6:1, 6:2, and 6:3. However, you may also order any part individually. Reference numbers of this type appear in illustrations and in part lists.

#### Reference Numbers Indicating Quantity

In an illustration, if a reference number indicates more than one part, the reference number has the form nX y. The n represents the quantity of the part, the X is the multiplication symbol, and the y represents the reference number.

For example, in an illustration, the reference number 2X 37 means that two of the parts identified by reference number 37 are indicated.



## Hose Kit Assembly No. 107-1633

Ref	Part No.	Qty.	Description
1	106-9748	1	Hose-Flexible
2	105-7793	1	Tube-Handle
3	102528	1	Clamp
4	105-9707	1	Bracket-Anchor
5	322-3	1	Screw-HH
6	3256-23	1	Washer-Flat
7	3296-29	1	Nut-Lock, NI
8	322-10	1	Screw-HH
9	3296-29	1	Nut-Lock, NI
10	105-8155	1	Holddown-Hood
