



Count on it.

Operator's Manual

QAS Utility Box

For Sand Pro® 3040 & 5040

Model No. 08760—Serial No. 260000001 and Up

Introduction

Read this information carefully to learn how to operate and maintain your product properly and to avoid injury and product damage. You are responsible for operating the product properly and safely.

You may contact Toro directly at www.Toro.com for product and accessory information, help finding a dealer, or to register your product.

Whenever you need service, genuine Toro parts, or additional information, contact an Authorized Service Dealer or Toro Customer Service and have the model and serial numbers of your product ready. Figure 1 identifies the location of the model and serial numbers on the product. Write the numbers in the space provided.

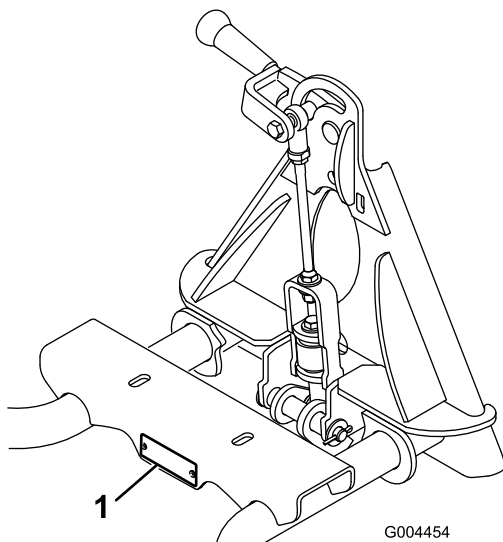


Figure 1

1. Model and serial number location

Model No. _____
Serial No. _____

This manual identifies potential hazards and has safety messages identified by the safety alert symbol (Figure 2), which signals a hazard that may cause serious injury or death if you do not follow the recommended precautions.



1. Safety alert symbol

This manual uses 2 other words to highlight information. **Important** calls attention to special mechanical information and **Note** emphasizes general information worthy of special attention.

Contents

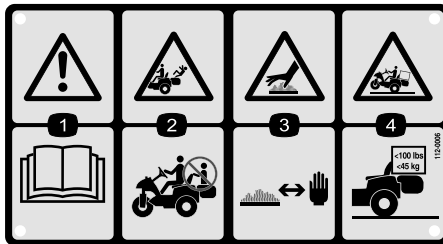
Introduction	2
Safety	3
Safety and Instructional Decals	3
Setup	4
1 Mounting the Utility Box Assembly.....	4
2 Adjusting the Link Assembly	4
3 Removing the Utility Box	5
Operation	6
Operating Tips.....	6
Box Capacity	6
Inspection and Clean-up.....	7
Maintenance	8
Greasing the Attachment Adapter.....	8

Safety

Safety and Instructional Decals

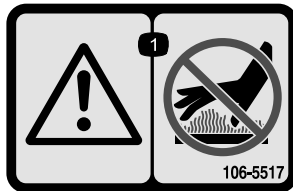


Safety decals and instructions are easily visible to the operator and are located near any area of potential danger. Replace any decal that is damaged or lost.



112-0006

1. Warning—read the *Operator's Manual*.
2. Falling hazard—do not carry passengers in the utility tote.
3. Hot surface/burn hazard—stay a safe distance from the hot surface.
4. Tipping hazard—keep loads less than 100 lbs (45 kg).



106-5517

1. Warning—do not touch the hot surface.

Setup

Loose Parts

Use the chart below to verify that all parts have been shipped.

Step	Description	Qty.	Use
1	Utility box assembly	1	Mount the utility box assembly
2	No parts required	–	Adjust the link assembly
3	No parts required	–	Remove the utility box

The traction unit must be equipped with the Front Weight Kit, Part No. 100–6442.

Step 1

Mounting the Utility Box Assembly

Parts needed for this step:

1	Utility box assembly
---	----------------------

Procedure

1. Rotate the kickstands down to support the utility box assembly off the ground (Figure 3).

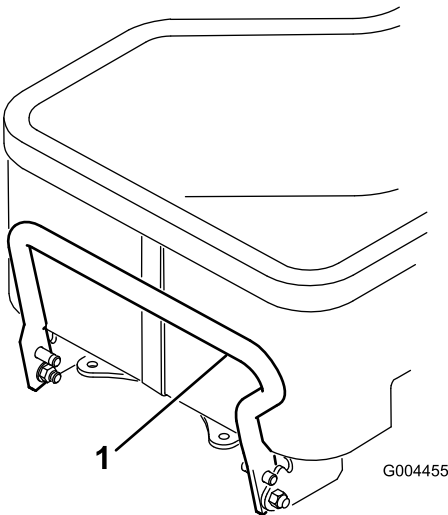


Figure 3

1. Kickstand

2. Remove any attachment from the rear of the machine.
3. Lower the traction unit adapter. Back the traction unit into position in front of the attachment adapter.
4. Raise the traction unit adapter into the attachment adapter.
5. Pivot the locking lever to the right to lock the adapters together (Figure 4).

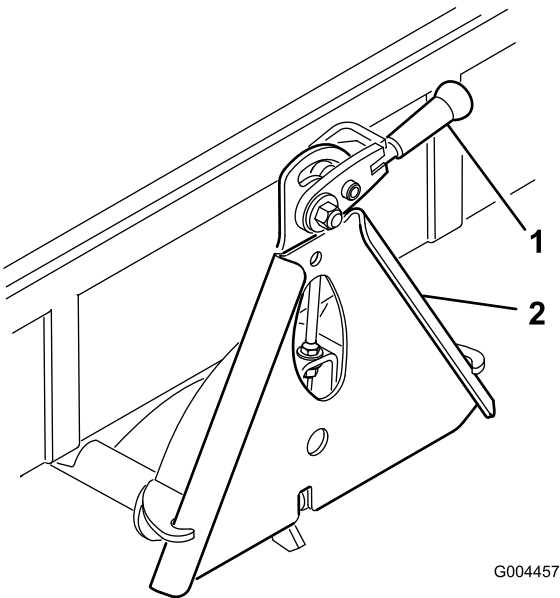


Figure 4

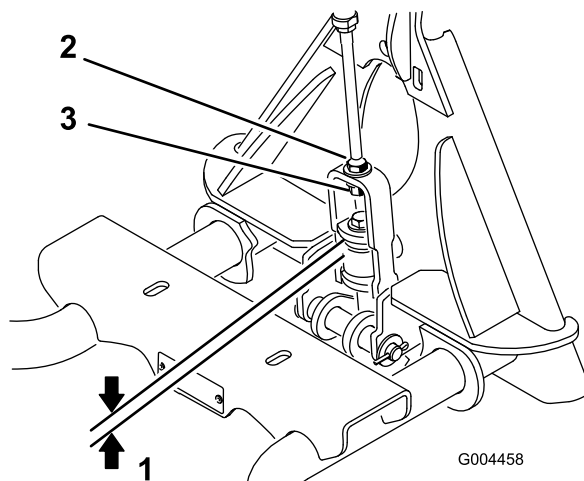
1. Locking lever 2. Attachment adapter

6. Rotate the kickstands up to the transport position.

Step**2****Adjusting the Link Assembly****No Parts Required****Procedure**

1. With the attachment mounted and secured on the traction unit, raise the attachment.
2. Measure the gap between the top washer and the spacer in the link assembly on the attachment adapter as shown in Figure 5.

Note: The gap between the washer and the shoulder should be 0.060 to 0.080 inch

**Figure 5**

- | | |
|------------------------|-------------------|
| 1. 0.060 to 0.080 inch | 3. Adjustment nut |
| 2. Jam nut | |

Step**3****Removing the Utility Box****No Parts Required****Procedure**

1. Drive the machine to a level surface.
2. Raise the utility box to the highest position.
3. Set the parking brake and turn off the engine. Remove the key from the ignition switch.
4. Pivot the locking lever to the left to unlock the attachment adapters.
5. Rotate the kickstands down to support the utility box off the ground.
6. Start the machine and lower the utility box.

Operation

Operating Tips

- Do not carry loads which exceed the load limit of 100 pounds.
- The utility box is intended for load carrying purposes only, not for passengers.
- Reduce the weight of the load when operating on hills and rough terrain to avoid tipping or overturning.
- Reduce the weight of the load if the center of gravity is high. Items such as bricks, fertilizer, or landscape timbers stack higher in the box. The higher a load is stacked, the more likely the machine is to tip over. Distribute the load as low and as far forward as possible, making sure that the load does not affect rear visibility.
- Position the weight of the load evenly from side to side. If you position the load toward one of the sides, the machine is more likely to tip over while turning.
- Use extra caution if the load exceeds the dimensions of the box and when handling off-center loads that cannot be centered. Keep loads balanced and secure to prevent them from shifting.
- Always secure loads so that they do not shift. If a load is not secured, or you are transporting a liquid in a large container the load can shift. This shifting happens most often while turning, going up or down hills, suddenly changing speeds, or while driving over rough surfaces. Shifting loads can cause the machine to tip over.
- When operating with a load in the box, reduce your speed and allow for sufficient braking distance. Do not stop suddenly. Use extra caution on slopes.
- Be aware that heavy loads increase your stopping distance and reduce your ability to turn quickly without tipping over.
- Lower the kickstands before lowering the utility box to the ground.
- 5.5 cases of aluminium canned beverages.
- For the following soil types and similar fill, load 3 inches deep (1 to 1-1/2 5 gallon pails full):
 - Wet earth containing clay
 - Gravel, wet or dry
 - Dry sand
 - Finely ground limestone
- For the following materials and similar fill the box can be loaded up to the top:
 - Crushed aluminum cans
 - Grass
 - Loose compost
 - Shredded prunings
 - Shredded wood chips

Box Capacity

Estimated loads of various cargos which are equal too but do not exceed 100 pounds.

Inspection and Clean-up

When the operation is completed, clean the box and the machine thoroughly. Since this machine is used primarily in sand, and sand is extremely abrasive, the sand should be flushed off after each use. If the machine is cleaned frequently, before the sand has a chance to cake, it can be cleaned with a stream of water from a hose with the nozzle removed. A high pressure stream could drive the sand into wear areas where it could act as a grinding compound.

Note: If the attachment adapter becomes stuck to the traction unit adapter, insert a pry bar/screwdriver into the pry slot to disengage the parts (Figure 6).

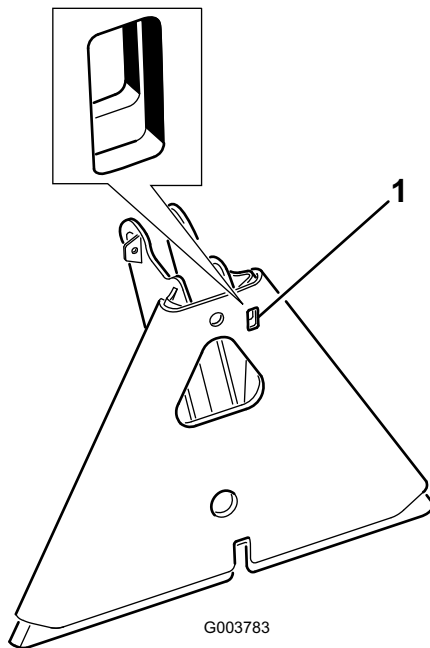


Figure 6

1. Pry slot

Maintenance

Greasing the Attachment Adapter

If the locking lever on the attachment adapter does not pivot freely and easily, apply a light coat of grease to the area shown in Figure 7.

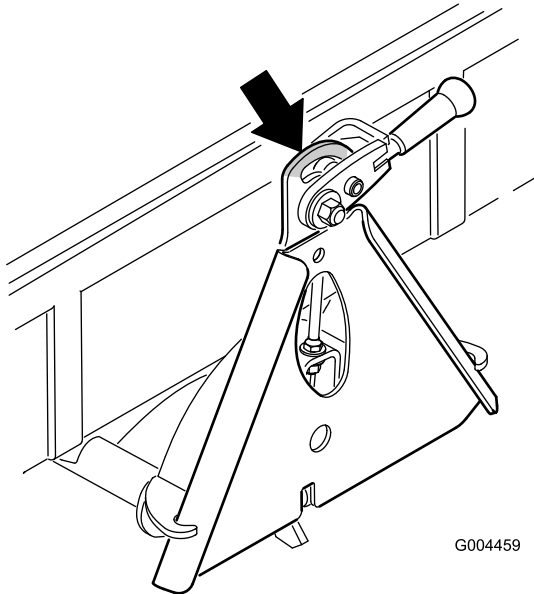


Figure 7



The Toro General Commercial Products Warranty

A Two-Year Limited Warranty

Conditions and Products Covered

The Toro® Company and its affiliate, Toro Warranty Company, pursuant to an agreement between them, jointly warrant your Toro Commercial Product ("Product") to be free from defects in materials or workmanship for two years or 1500 operational hours*, whichever occurs first. Where a warrantable condition exists, we will repair the Product at no cost to you including diagnosis, labor, parts, and transportation. This warranty begins on the date the Product is delivered to the original retail purchaser.

Product equipped with hour meter

Instructions for Obtaining Warranty Service

You are responsible for notifying the Commercial Products Distributor or Authorized Commercial Products Dealer from whom you purchased the Product as soon as you believe a warrantable condition exists.

If you need help locating a Commercial Products Distributor or Authorized Dealer, or if you have questions regarding your warranty rights or responsibilities, you may contact us at:

Toro Commercial Products Service Department

Toro Warranty Company

8111 Lyndale Avenue South

Bloomington, MN 55420-1196

952-888-8801 or 800-982-2740

E-mail: commercial.service@Toro.com

Owner Responsibilities

As the Product owner, you are responsible for required maintenance and adjustments stated in your operator's manual. Failure to perform required maintenance and adjustments can be grounds for disallowing a warranty claim.

Items and Conditions Not Covered

Not all product failures or malfunctions that occur during the warranty period are defects in materials or workmanship. This express warranty does not cover the following:

- Product failures which result from the use of non-Toro replacement parts, or from installation and use of add-on, modified, or unapproved accessories
- Product failures which result from failure to perform required maintenance and/or adjustments
- Product failures which result from operating the Product in an abusive, negligent or reckless manner
- Parts subject to consumption through use unless found to be defective. Examples of parts which are consumed, or used

up, during normal Product operation include, but are not limited to, blades, reels, bedknives, tines, spark plugs, castor wheels, tires, filters, belts, and certain sprayer components such as diaphragms, nozzles, and check valves, etc.

- Failures caused by outside influence. Items considered to be outside influence include, but are not limited to, weather, storage practices, contamination, use of unapproved coolants, lubricants, additives, or chemicals, etc.
- Normal "wear and tear" items. Normal "wear and tear" includes, but is not limited to, damage to seats due to wear or abrasion, worn painted surfaces, scratched decals or windows, etc.

Parts

Parts scheduled for replacement as required maintenance are warranted for the period of time up to the scheduled replacement time for that part.

Parts replaced under this warranty become the property of Toro. Toro will make the final decision whether to repair any existing part or assembly or replace it. Toro may use factory remanufactured parts rather than new parts for some warranty repairs.

General Conditions

Repair by an Authorized Toro Distributor or Dealer is your sole remedy under this warranty.

Neither The Toro® Company nor Toro Warranty Company is liable for indirect, incidental or consequential damages in connection with the use of the Toro Products covered by this warranty, including any cost or expense of providing substitute equipment or service during reasonable periods of malfunction or non-use pending completion of repairs under this warranty. Except for the Emissions warranty referenced below, if applicable, there is no other express warranty. All implied warranties of merchantability and fitness for use are limited to the duration of this express warranty.

Some states do not allow exclusions of incidental or consequential damages, or limitations on how long an implied warranty lasts, so the above exclusions and limitations may not apply to you.

This warranty gives you specific legal rights, and you may also have other rights which vary from state to state.

Note regarding engine warranty: The Emissions Control System on your Product may be covered by a separate warranty meeting requirements established by the U.S. Environmental Protection Agency (EPA) and/or the California Air Resources Board (CARB). The hour limitations set forth above do not apply to the Emissions Control System Warranty. Refer to the Engine Emission Control Warranty Statement printed in your operator's manual or contained in the engine manufacturer's documentation for details.

Countries Other than the United States or Canada

Customers who have purchased Toro products exported from the United States or Canada should contact their Toro Distributor (Dealer) to obtain guarantee policies for your country, province, or state. If for any reason you are dissatisfied with your Distributor's service or have difficulty obtaining guarantee information, contact the Toro importer. If all other remedies fail, you may contact us at Toro Warranty Company.