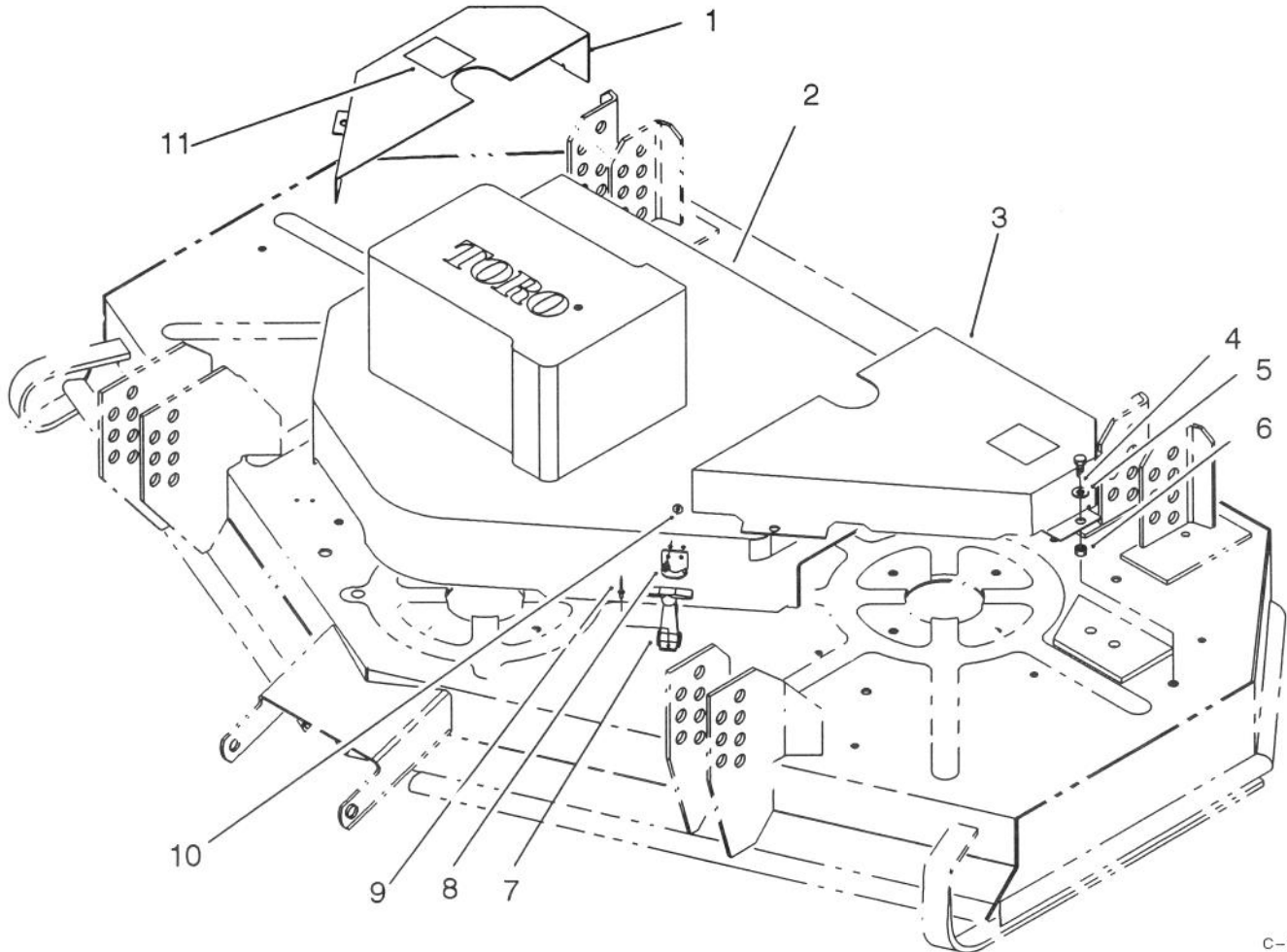




MODEL NO. 30548-20001 & UP

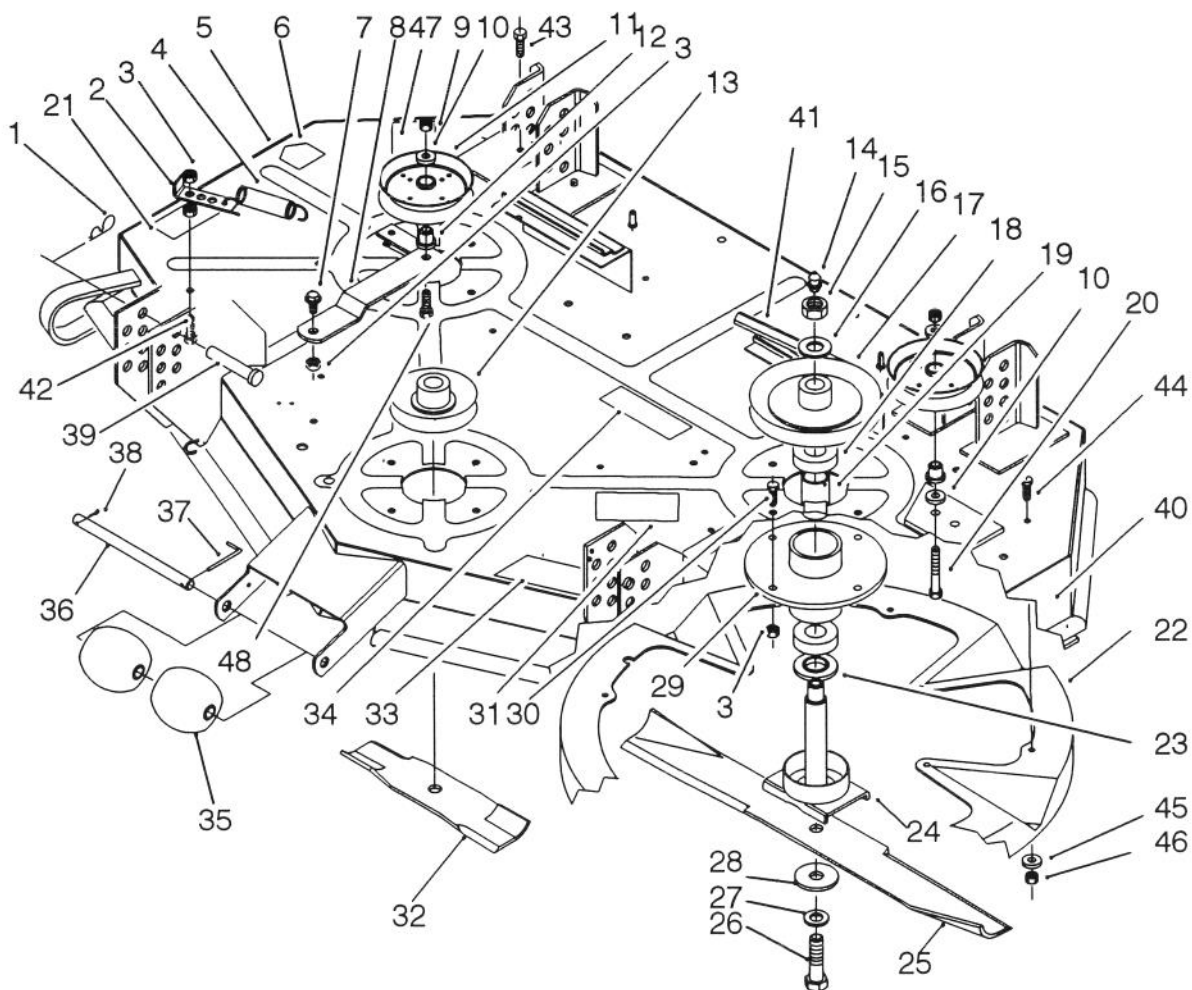
PARTS
CATALOG48" RECYCLER CUTTING DECK
PROLINE 118

C-0698

COVER ASSEMBLY

Ref. No.	Part No.	Description	No. Used
1	82-8590	Cover - R.H.	1
2	72-7810	Cover - Center	1
3	82-8580	Cover - L.H.	1
4	321-3	Screw - Hex Hd. Cap	6
5	3253-3	Washer - Lock	6
6	32117-2	Nut - Insert	6

Ref. No.	Part No.	Description	No. Used
7	59-9740	Latch Assembly	2
8	3290-415	Rivet - Dome	4
9	3290-271	Rivet - Pop	4
10	3256-13	Washer - Flat	4
11	61-5950	Decal - Danger	2



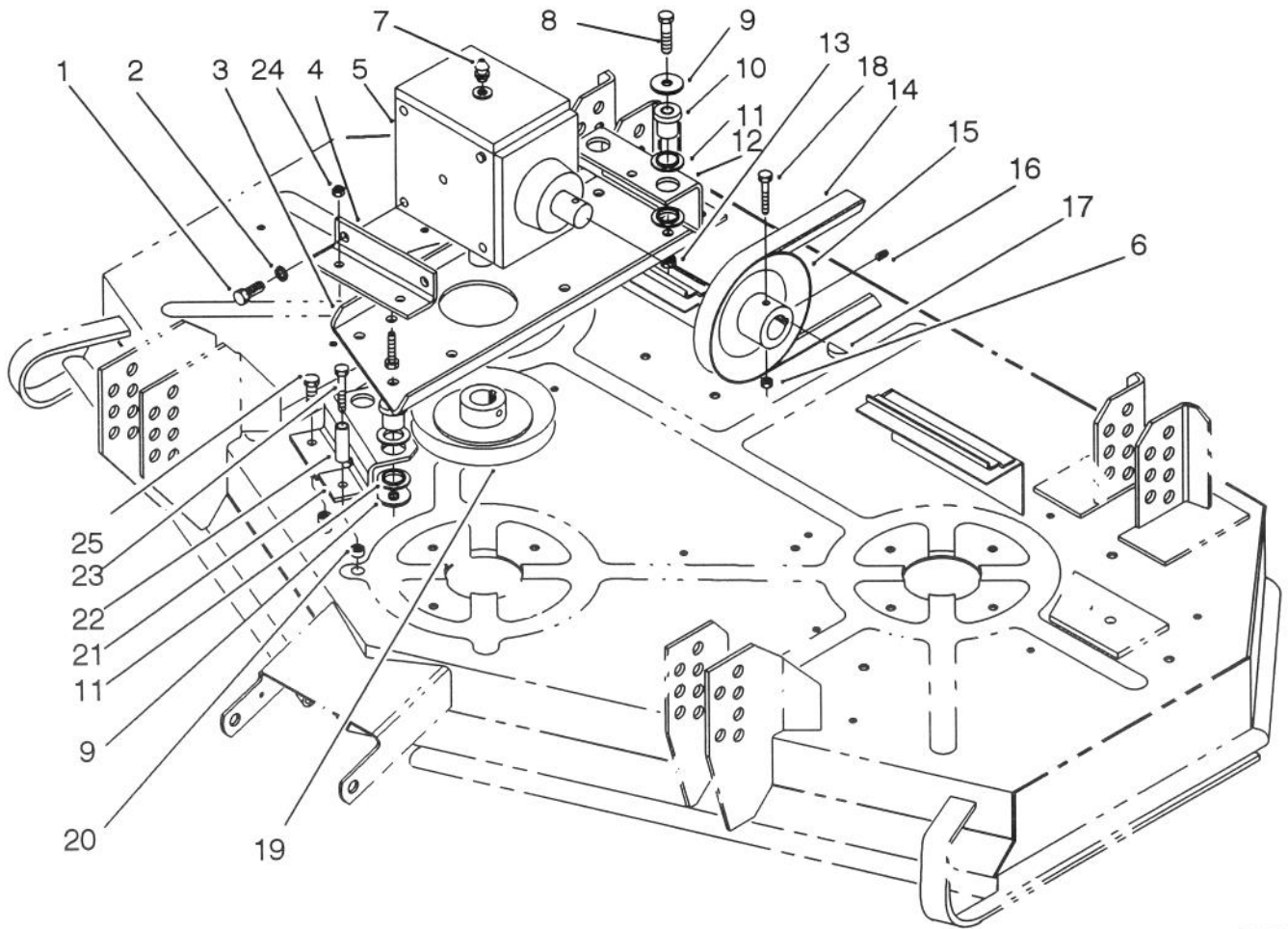
C-0701

CUTTING DECK & SPINDLE ASSEMBLY

Ref. No.	Part No.	Description	No. Used
1	3290-355	Cotter - Hairpin	4
2	72-7590	Anchor - Deck Spring	1
3	3296-29	Nut - Lock	15
4	54-1160	Spring - Extension	1
5	14-3739	Deck - 48" (Incl. Ref. # 6, 21, 31, 33, 34, 40, & 47)	1
6	43-8480	Decal - Danger	2
7	19-1470	Bolt - Shoulder	1
8	72-7610	Lever - Idler	1
9	3296-39	Nut - Hex	2
10	7-0081	Washer - Flat	3
11	65-5940	Pulley - Idler	2
12	65-5950	Bushing - Pulley	2
13	72-8200	Pulley - Center	1
14	302-2	Fitting - Grease	3
15	32146-20	Nut - Lock	3
16	7-4150	Spacer - Bearing	3
17	67-7690	Pulley - Outside	2
18	251-257	Bearing - Ball	6
19	67-7580	Spacer - Bearing	3
20	323-11	Screw - Hex Hd. Cap	1
21	72-7890	Decal - Danger	2
22	82-9890	Insert - Kicker	2
23	67-7570	Spacer - Spindle	3
24	71-2780	Spindle Shaft Assembly	3

Ref. No.	Part No.	Description	No. Used
25	72-7730	Blade - L.H.	1
*	72-7740	Blade - R.H.	1
26	51-4060	Bolt - Blade	3
27	3253-8	Washer - Lock	3
28	82-7460	Washer - Blade	2
29	67-7590	Housing - Spindle	3
30	322-4	Screw - Hex Hd. Cap	12
31	67-5360	Decal - Danger	1
32	72-7690	Blade - Center	1
33	68-8340	Decal - Caution	1
34	72-7750	Decal - Belt Routing	1
35	29-4820	Roller	2
36	40-6400	Shaft - Roller	1
37	57-0690	Pin - Special Cotter	1
38	3272-11	Pin - Cotter	1
39	283-55	Pin - Clevis	4
40	82-8830	Decal - 48"	1
41	57-0240	V-Belt - Deck	1
42	322-5	Screw - Hex Hd. Cap	1
43	321-6	Screw - Hex Hd. Cap	1
44	321-4	Screw - Hex Hd. Cap	15
45	3256-1	Washer - Lock	16
46	3296-16	Nut - Lock	16
47	68-7270	Decal - Warning	1
48	323-9	Screw - Hex. Hd.	1

*Not Illustrated



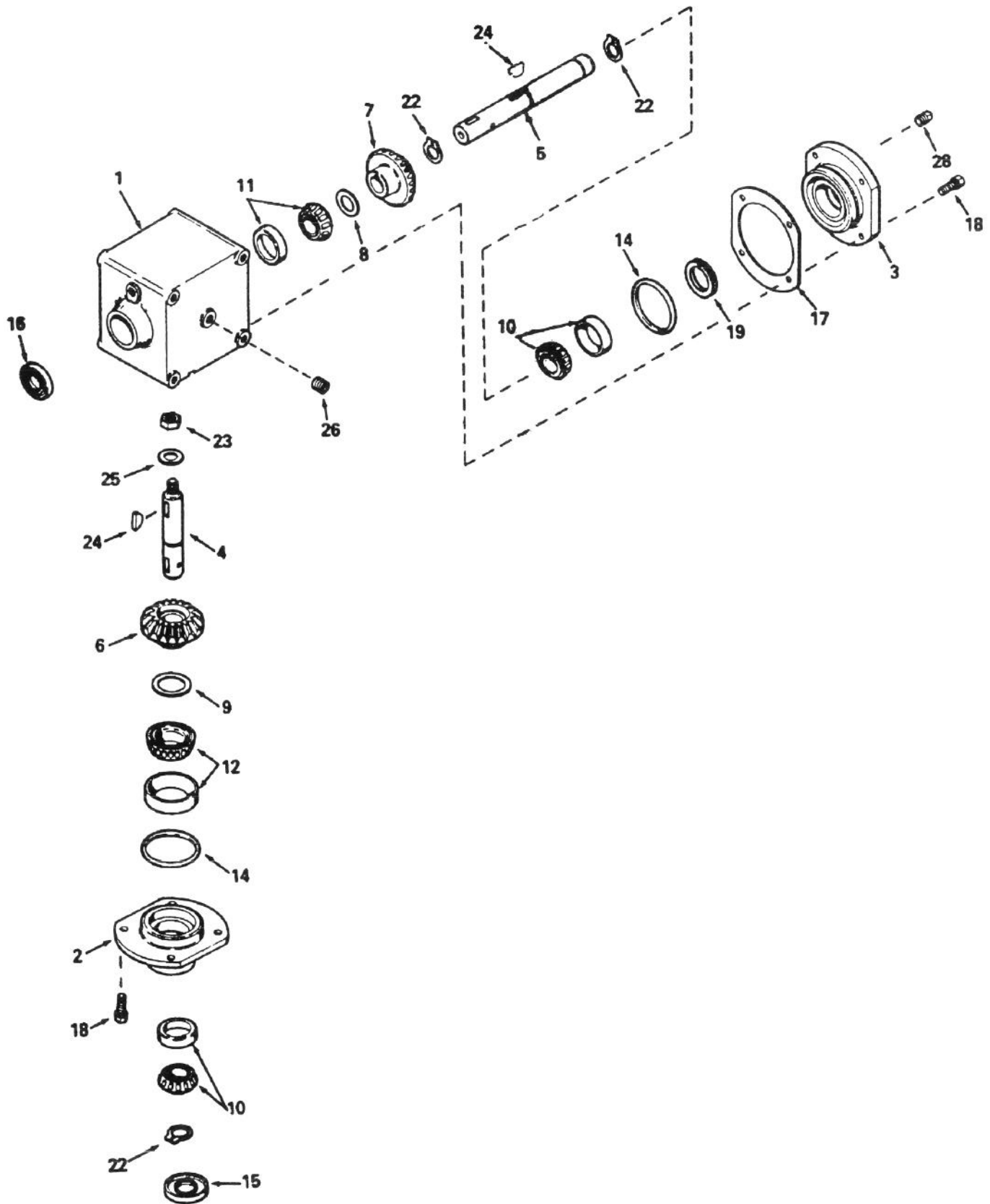
C-0699

GEAR CASE ASSEMBLY

Ref. No.	Part No.	Description	No. Used
1	323-5	Screw - Hex Hd. Cap	4
2	3253-21	Washer - Lock	4
3	72-8460	Plate - Gear Box	1
4	72-8450	Angle - Gear Box Mtg.	2
5	53-4600	Gear Box - Deck Drive	1
6	3296-16	Nut - Lock	2
7	302-34	Cap - Vent	1
8	323-8	Screw - Hex Hd. Cap	4
9	63-8410	Washer - Flat	4
10	63-9750	Mount - ISO	4
11	72-7700	Insert - ISO Mount	8
12	72-8270	Plate - Bracket	1
13	3296-39	Nut - Lock	4

Ref. No.	Part No.	Description	No. Used
14	72-8170	V-Belt - Deck Drive	1
15	72-8220	Pulley - Gear Box Input	1
16	3241-2	Screw - Set	2
17	3257-14	Key - Woodruff	2
18	321-16	Screw - Hex Hd. Cap	2
19	82-2510	Pulley - Gear Box Output	1
20	3290-472	Nut - Insert	2
21	72-8280	Plate - Bracket	1
22	47-0920	Spacer	1
23	322-11	Screw Hex Hd. Cap	1
24	3296-29	Nut - Lock	6
25	322-4	Screw - Hex Hd Cap	7

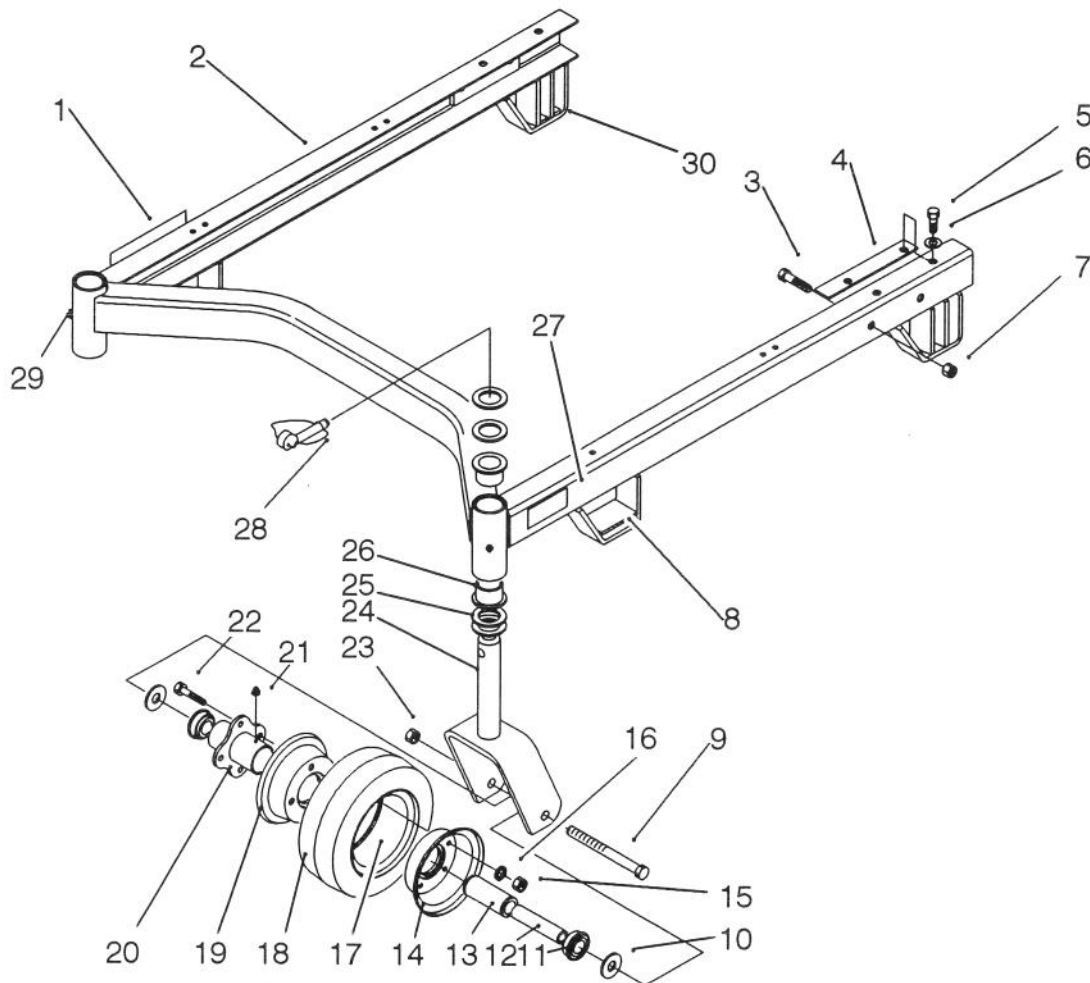
GEAR BOX ASSEMBLY MODEL NO. 1100-010



GEAR BOX ASSEMBLY MODEL NO. 1100-010

Ref. No.	Part No.	Description	No. Used
1	77076	Housing – Drive	1
2	786104A	Cap – Retainer	1
4	776224	Shaft – Input	1
5	776223	Shaft – output	1
6	778167	Gear – Bevel (25 Tooth)	1
7	778171	Gear – Bevel (26Tooth)	1
8	780	Shin (1-1/2" O.D. x1-1/64" I.D. x.002 thick)	1
9	780138	Shim (2.00" O.D. x1.531" I.D. x.002 Thick)	1
10	780132	Bearing Assembly (May Include Shim Ref.#8)	1
11	780132	Bearing Assembly (May Include Shim Ref.#8)	1

Ref. No.	Part No.	Description	No. Used
12	780134	Bearing Assembly (May Include Shim Ref.#9)	1
14	788063	"O"Ring	1
15	788064	Seal – Oil	12
16	788065	Seal – Oil	1
17	780136	Shim – Cap retainer	1
18	792037	Screw – hex. Hd.	1
19	780137	Ring – Load	1
22	792113	Ring – Retaining	1
23	729110	Nut	1
24	792114	Key – Woodruff	1
25	792115	Washer – Flat	1
26	792116	Plug – Pipe	12
28	28534	Plug – Pipe	1

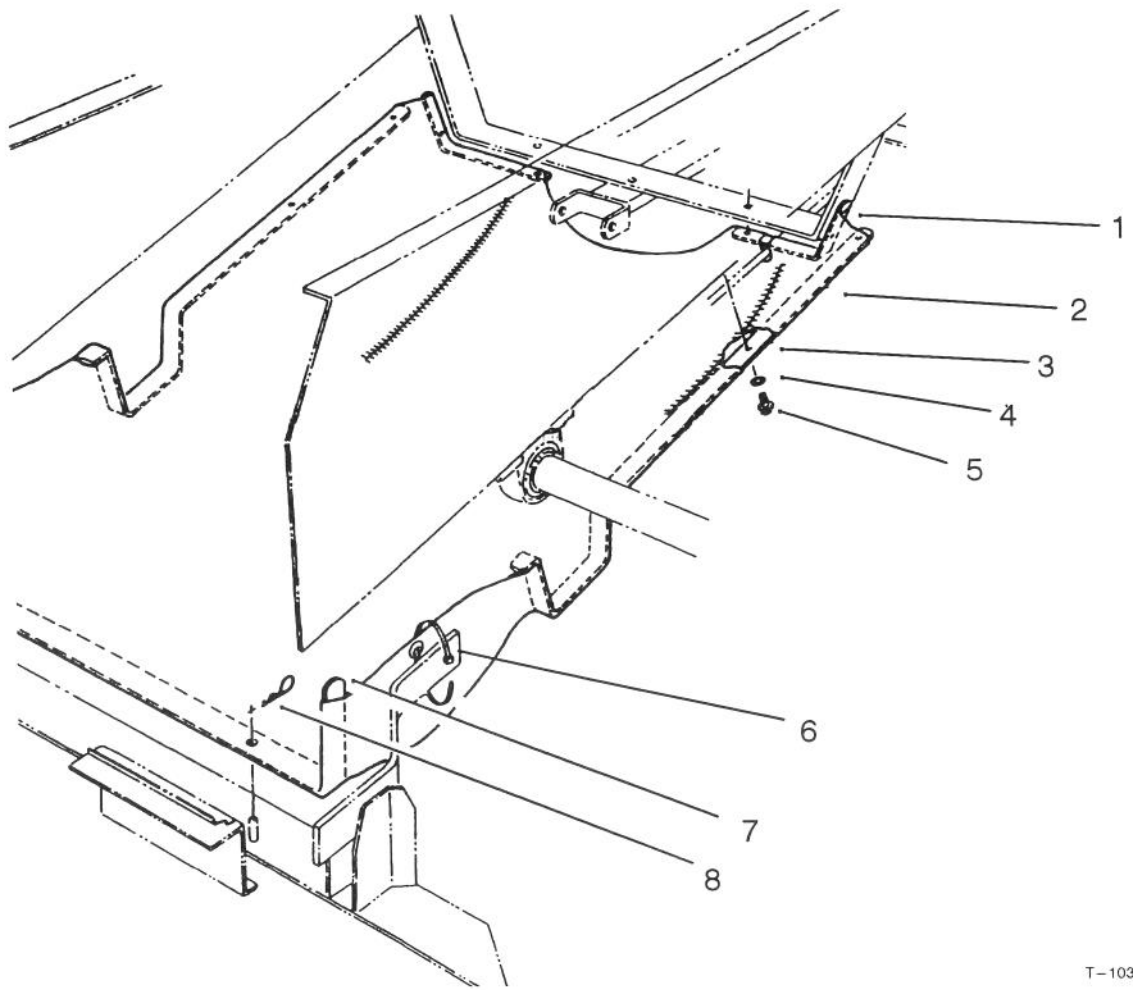


C-0700

CARRIER FRAME ASSEMBLY

Ref. No.	Part No.	Description	No. Used
1	68-8360	Decal - H.O.C.	1
2	55-4630	Frame - Suspension Ass'y	1
3	323-9	Screw - Hex Hd. Cap	4
4	62-6980	Shim - Carrier	2
5	3235-21	Screw - Hex Hd. Cap	4
6	3256-24	Washer - Flat	4
7	32152-2	Nut - Lock	4
8	74-0340	Cushion - Rubber	2
9	325-19	Screw - Hex Hd. Cap	4
10	3256-6	Washer - Flat	4
11	62-5580	Bushing	4
12	68-8980	Spanner	2
13	62-5570	Bearing - Roller	2
14	68-8930	Wheel Half - Male	2
15	3217-6	Nut - Lock	8
16	3253-4	Washer - Lock	8

Ref. No.	Part No.	Description	No. Used
17	68-8950	Tube w/Valve	2
18	68-8960	Tire	2
19	68-8920	Wheel Half - Female	2
20	68-8940	Hub - Centered	2
21	302-61	Fitting - Grease	2
22	54-8890	Bolt - Wheel	8
23	32153-5	Nut - Lock	2
24	68-8900	Front Caster Fork Assembly	2
25	3-6781	Washer - Thrust	8
26	28-9290	Bushing	4
27	74-0940	Decal - H.O.C.	1
28	3290-384	Lynch Pin - Safety	2
29	302-5	Fitting - Grease	2
30	74-0341	Cushion - Rubber	4
*	13-3869	Castor Wheel Assembly\ (Incl. Ref.#10-22)	1



T-1034

SHIELD KIT NO. 82-7450

Ref. No.	Part No.	Description	No. Used
1	72-8340	Bracket - Shield	2
2	72-7710	Shield	1
3	72-8290	Support - Side	2
4	3254-8	Washer - Lock Int. Tooth	9

Ref. No.	Part No.	Description	No. Used
5	32144-10	Screw - Washer Hd.	9
6	3290-379	Tie - Cable	2
7	72-7680	Support - Deck	1
8	3290-467	Pin - Hair Cotter	2

