

Operator's Manual

**Triple Rear Bagger
(for 54-inch decks)**

Model OEM-190-842

MTD LLC, P.O. BOX 361131 CLEVELAND, OHIO 44136-0019

PRINTED IN U.S.A.

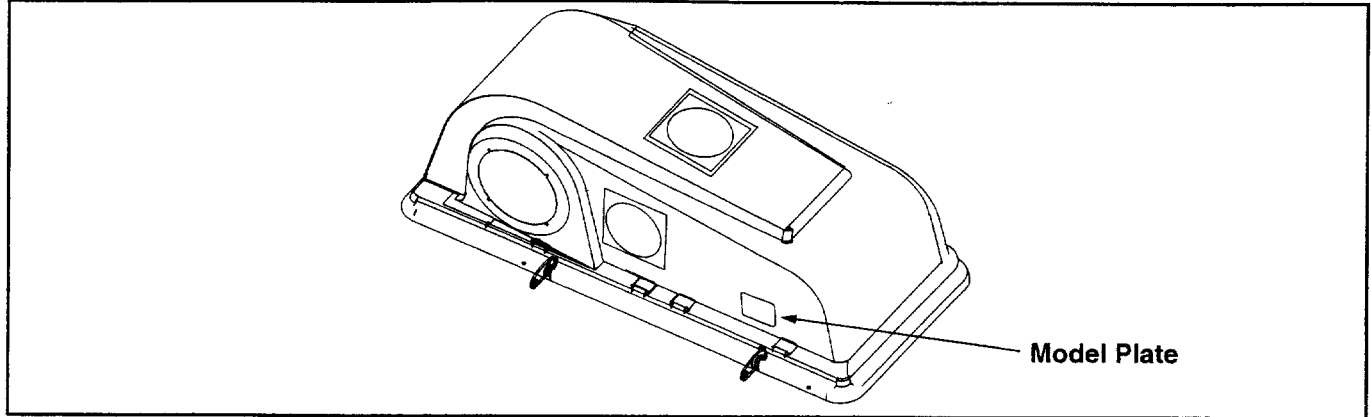
FORM NO. 770-10592B
(4/12/2005)

FINDING YOUR MODEL NUMBER

This Operator's Manual is an important part of your new grass collector. It will help you assemble, prepare and maintain it. Please read and understand what it says.

Before you start to assemble this attachment, please locate the model plate and copy the information from it in this Operator's Manual for future reference. The information on the model plate is very important if you need help from our Customer Support Department or your authorized dealer.

- You can locate it by looking on the front, left portion of the plastic grass catcher cover.



- An example model plate is pictured below.



Copy the model number here:

Copy the serial number here:

CALLING CUSTOMER SUPPORT

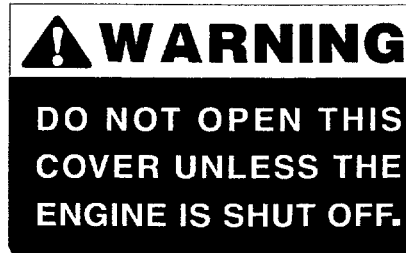
If you have difficulty assembling this product or have any questions regarding the controls, operation or maintenance of this unit, please call the Customer Support Department.



Call 1- (330) 220-4MTD (4683) or 1- (800)-800-7310 to reach a Customer Support representative. Please have your unit's model number and serial number ready when you call. See previous section to locate this information. You will be asked to enter the serial number in order to process your call.

SAFETY LABELS

IMPORTANT: The following safety labels can be found on grass collection system OEM-190-842



For more details about this unit, visit our website at www.mtdproducts.com

SECTION 1: TO THE OWNER

Model 842 Triple Rear Bagger Kit is a grass collection system designed for use on FastAttach™ Compatible Garden Tractors equipped with a 54-inch cutting deck only.

The instructions in this manual are divided into sections. Carefully read all sections and study the illustrations to ensure proper installation and usage of this attachment. Read and observe all **WARNING** and **CAUTION** statements. They are included to provide for the protection of the equipment installer and user, and to ensure the prolonged service life of the equipment.

NOTE: References to *LEFT* and *RIGHT* indicate the left and right sides of the tractor when facing forward in the operator's position. Reference to the *FRONT* indicates the grille end; to the *REAR* the drawbar end.

SECTION 2: CONTENTS OF CARTON

Before beginning installation, remove all parts from the carton to make sure everything is present. Carton contents are listed below and shown in Figure 1. Hardware part number are shown in parentheses.

One Chute Tube

One Discharge Chute Assembly

One Extension Tube

One Set of Blades

Three Grass Bag Assemblies

One Chute Stop Bracket with Carriage Bolt (710-3168) and Lock Nut (712-0130)

One Grass Catcher Cover Assembly

One Bracket Assembly w/ Clevis Pin (711-0309A) & Hairpin Clip (714-0117) in place

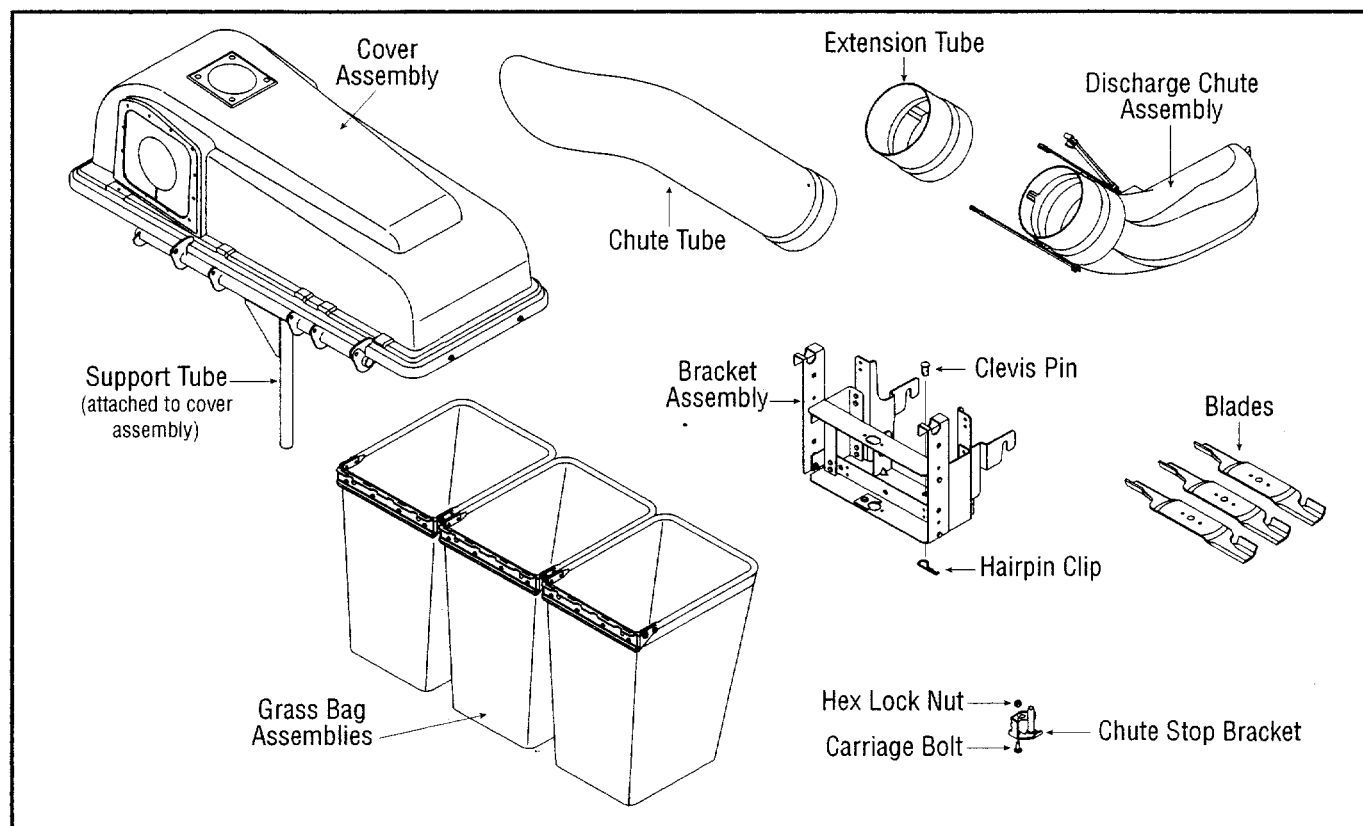


Figure 1

SECTION 3: ASSEMBLY



WARNING: Before beginning installation, place the tractor on a firm and level surface. Place the PTO in the disengaged (OFF) position, stop the tractor engine and set the parking brake.

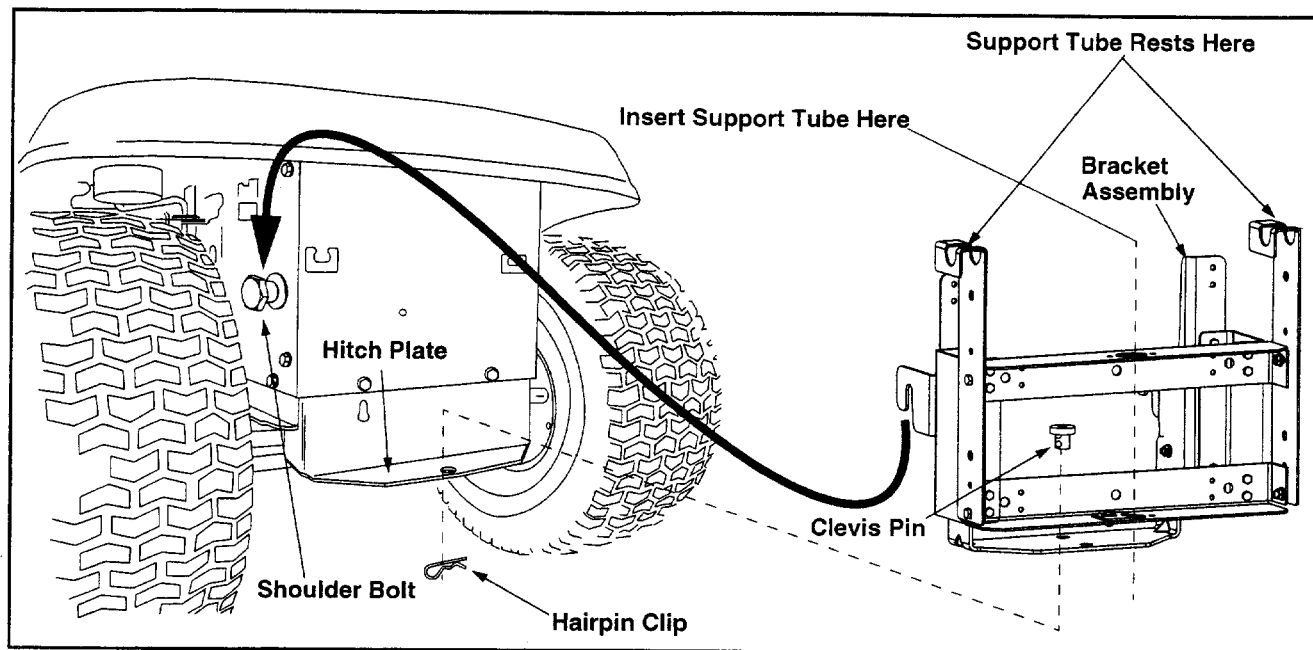


Figure 2

Mounting The Bracket Assembly

- To ease the following procedures, tilt the seat forward and leave it in that position until the grass collector is fully attached.
- Remove the hairpin clip and clevis pin from the hole in the rear of the bracket assembly. Refer to Figure 1
- Position the hooked ends of the bracket assembly to the outside of the tractor's hitch plate and over the shoulder bolts. See Figure 2.
- Reinsert the clevis pin through the aligned holes in both the bracket assembly and the hitch plate. Affix with the hairpin clip. See Figure 2.

IMPORTANT: There are two holes found in the clevis pin. Be certain to insert the hairpin clip in the UPPER hole to properly secure the bracket assembly to the hitch plate

Attaching The Cover And Bags

- Place the cover assembly's support tube (refer to Figure 1) in position on the rear of unit by sliding the support tube down through the holes in the center of the bracket assembly. Refer to Figure 2.
- Place the cover assembly in position so that the support tube rests on both sides of the bracket assembly. Refer to Figure 2.

- Allow the plastic cover to rest in the "open" position on the back of the tractor's seat for ease of assembly.
- Attach the grass bags using the slots. See Figure 3.

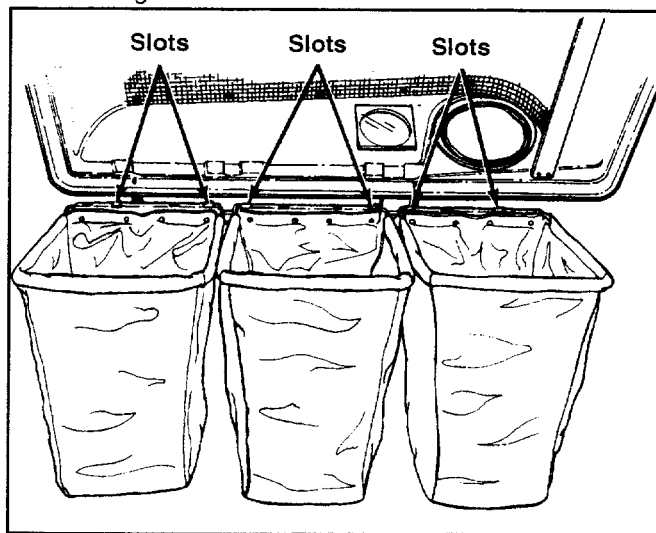


Figure 3

- Close the cover on the grass collector.

Attaching The Cutting Blades

Remove the blades from your tractor's cutting deck as follows.



WARNING: Cutting blades are sharp. Always protect hands by wearing heavy leather work gloves to grasp blades.

- Remove the cutting deck from beneath the tractor, (refer to DECK REMOVAL in the MAINTENANCE section of your tractor's Operator's Manual for detailed instructions) then gently flip the deck over to expose its underside.
- Place a block of wood between the center deck housing baffle and the cutting blade to act as a stabilizer.
- Use a 15/16" wrench to remove the hex flange nut that secures the blade to the spindle assembly.

NOTE: The hex flange nut has a right-handed thread pattern. Do NOT attempt to force the nut in the incorrect direction. Doing so may damage the nut.

- Install the new blades packed with the bagger. Be sure to install the blade with the side of the blade marked "Bottom" (or with a part number stamped in it) facing the ground when the mower is in the operating position.
- Remount the cutting deck.

IMPORTANT: Use a torque wrench to tighten the blade spindle hex flange nut to between 70 foot-pounds and 90 foot-pounds.

Attaching The Discharge Chute

- Raise the deck to its highest position by placing the lift lever in the top notch on the right fender, See Step 1 in Figure 4.
- Remove the chute stop bracket attached to the mower deck. The bracket is held to the deck with a bolt and nut, See Step 2a in Figure 4.
- Install the new chute stop bracket using the carriage bolt and hex lock nut provided, See Step 2b in Figure 4.

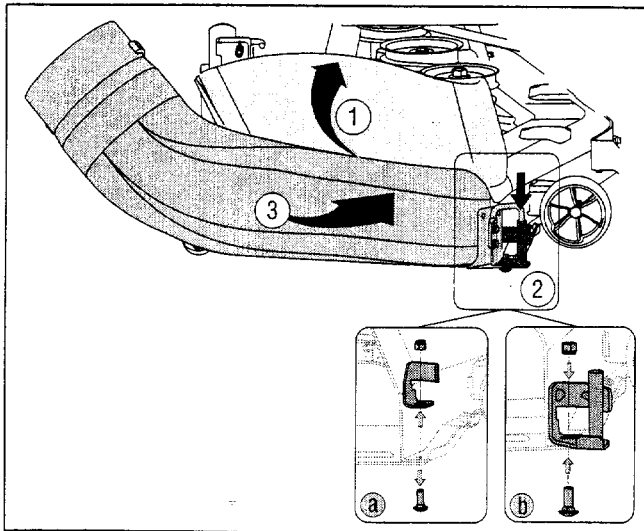


Figure 4

- While raising the chute deflector on the deck, angle the front corner of the discharge chute over the stop assembly and then slide the mounting rod into the stop assembly. See Step 2 in Figure 4.
- Rotate the discharge chute around the deck so the front edge fits snugly around the cutting deck opening, Step 3 in Figure 4.
- Fasten the discharge chute in position by hooking the retainer strap over the retainer clip on the top rear of the deck, Figure 5.

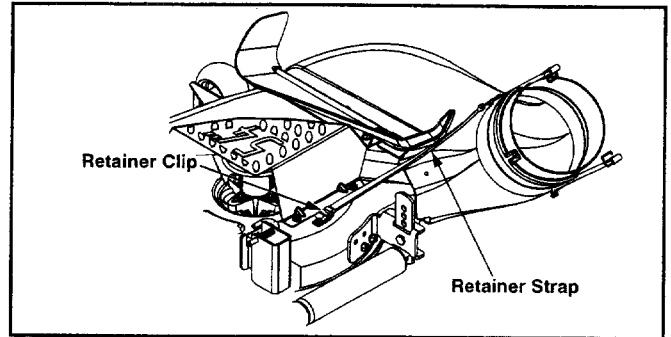


Figure 5

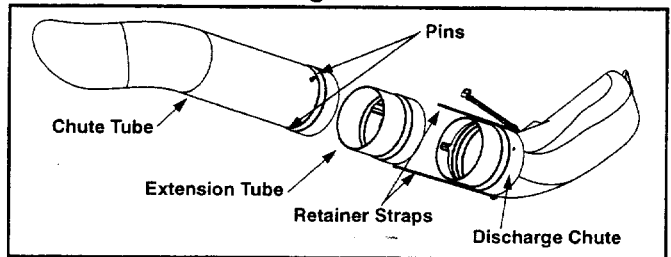


Figure 6

- Insert the upper end of the chute tube into the hole in the cover assembly, then insert the extension tube between the discharge chute and the chute tube. See Figure 6.
- Secure by placing the ends of the retainer straps on the discharge chute over the pins on the chute tube.

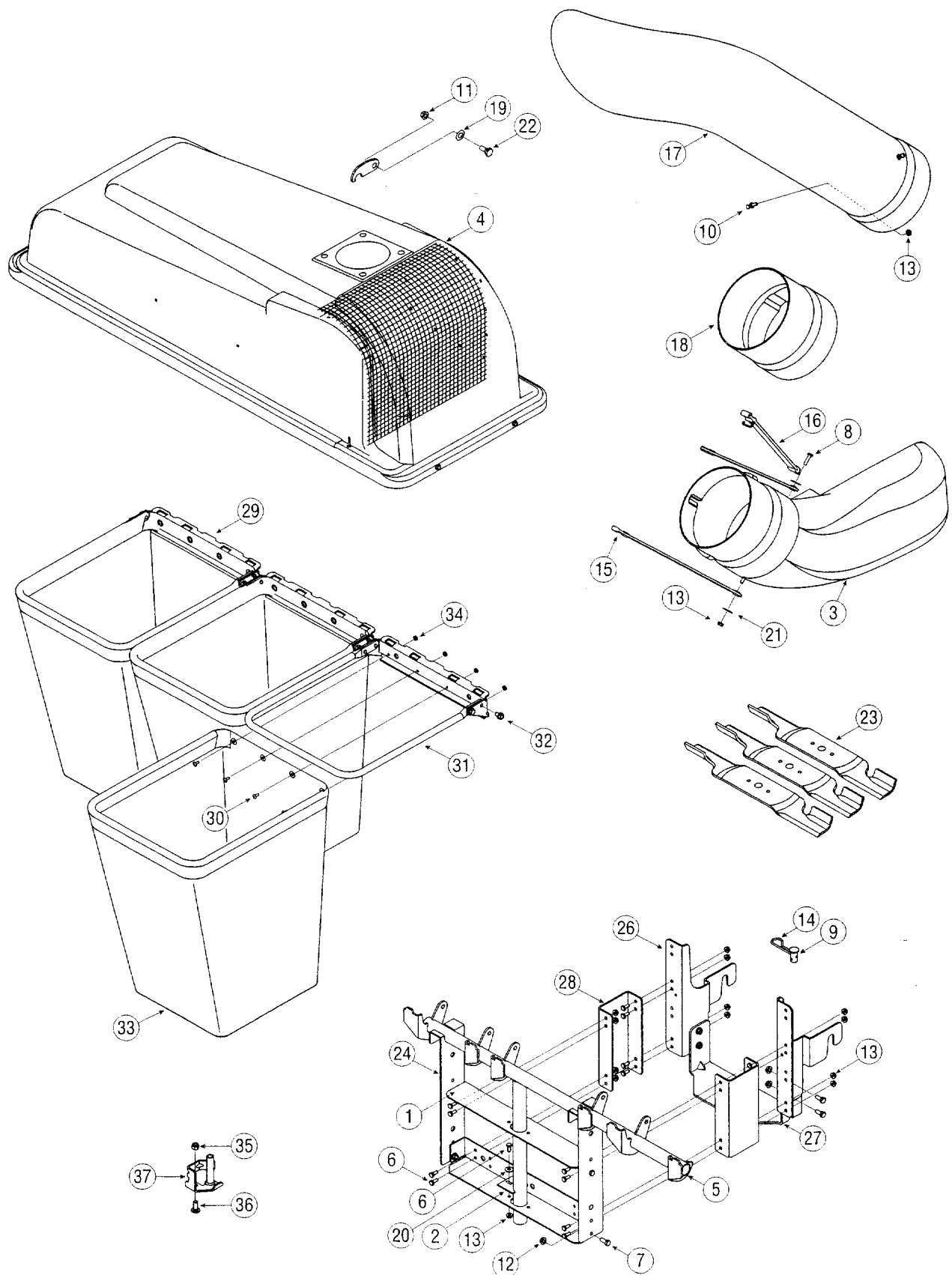
SECTION 4: OPERATION

Grass Bag Removal

- To open the cover, simply lift up on cover. The chute tube assembly does not need to be removed.
- To remove the grass bags, lift up on bag and unhook the frame of the bag from the support tube assembly.
- To empty the grass, use the handle which is provided on the bottom of each bag.

NOTE: Under normal usage, the grass collector is subject to wear and should be checked periodically. Wash grass bag periodically with water. Allow to air dry. Do not apply heat.

Model 842



Model 842

Ref. No.	Part No.	Part Description
1.		Catcher Support Bracket
2.		Support Tube Bracket
3.		Elbow Chute Assembly
4.		Grass Catcher Cover Assembly
5.		Grass Catcher Support Assembly
6.		Hex Cap Screw, 1/4-20 x .62
7.		Hex Cap Screw, 5/16-18 x .75
8.		Hex Cap Screw, 1/4-20 x 1.00
9.		Clevis Pin
10.		Grass Catcher Pin, 1/4-20
11.		Hex Flange Lock Nut, 3/8-16
12.		Hex Flange Lock Nut, 5/16-18
13.		Hex Flange Lock Nut, 1/4-20
14.		Internal Cotter Pin, .148 x 3
15.		Chute Strap, 11.65
16.		Retainer Strap Assembly
17.		Chute Tube
18.		Extension Tube
19.		Belleville Washer
20.		Bell Washer, .265 x .75 x .062
21.		Flat Washer .265 x 1.0 x .030
22.		Shoulder Screw, .50 x .27, 3/8-16
23.		High Lift Blades 18.50"
24.		Catcher Support Bracket
25.		Catcher Support Bracket, RH
26.		Catcher Support Bracket, LH
27.		Catcher Support Bracket
28.		Catcher Spacer Bracket
29.		Bag Frame Hanger Bracket
30.		Screw, #10-24 x .5
31.		Grassbag Frame Tube
32.		Self-tapping Screw, 5/16-18 x .625
33.		Grassbag
34.		Hex Sems Nut, #10-24
35.		Hex Lock Nut, 3/8-16
36.		Carriage Bolt, 3/8-16: 1.00
37.		Chute Stop Bracket Assembly

MANUFACTURER'S LIMITED WARRANTY FOR:



The limited warranty set forth below is given by MTD LLC with respect to new merchandise purchased and used in the United States, its possessions and territories.

MTD LLC warrants this product against defects for a period of two (2) years commencing on the date of original purchase and will, at its option, repair or replace, free of charge, any part found to be defective in materials or workmanship. This limited warranty shall only apply if this product has been operated and maintained in accordance with the Operator's Manual furnished with the product, and has not been subject to misuse, abuse, commercial use, neglect, accident, improper maintenance, alteration, vandalism, theft, fire, water, or damage because of other peril or natural disaster. Damage resulting from the installation or use of any accessory or attachment not approved by MTD LLC for use with the product(s) covered by this manual will void your warranty as to any resulting damage.

Normal wear parts or components thereof are subject to separate terms as follows: All normal wear parts or component failures will be covered on the product for a period of 90 days regardless of cause. After 90 days, but within the two year period, normal wear part failures will be covered ONLY IF caused by defects in materials or workmanship of OTHER component parts. Normal wear parts and components include, but are not limited to: batteries, belts, blades, blade adapters, grass bags, rider deck wheels, seats, snow thrower skid shoes, shave plates, auger spiral rubber, tires.

HOW TO OBTAIN SERVICE: Warranty service is available, WITH PROOF OF PURCHASE, through your local authorized service dealer. To locate the dealer in your area, check your Yellow Pages, or contact MTD LLC at P.O. Box 361131, Cleveland, Ohio 44136-0019, 1-800-800-7310, 1-330-220-4683 or log on to our Web site at www.mtdproducts.com.

This limited warranty does not provide coverage in the following cases:

- a. The engine or component parts thereof. These items carry a separate manufacturer's warranty. Refer to the applicable manufacturer's warranty for terms and conditions.
- b. Log splitter pumps, valves, and cylinders have a separate one year warranty.
- c. Routine maintenance items such as lubricants, filters, blade sharpening, tune-ups, brake adjustments, clutch adjustments, deck adjustments, and normal deterioration of the exterior finish due to use or exposure.

- d. MTD LLC does not extend any warranty for products sold or exported outside of the United States, its possessions and territories, except those sold through MTD LLC's authorized channels of export distribution.
- e. Parts that are not genuine MTD parts are not covered by this warranty.
- f. Service completed by someone other than an authorized service dealer is not covered by this warranty.
- g. Transportation charges and service calls are not covered.

No implied warranty, including any implied warranty of merchantability of fitness for a particular purpose, applies after the applicable period of express written warranty above as to the parts as identified. No other express warranty, whether written or oral, except as mentioned above, given by any person or entity, including a dealer or retailer, with respect to any product, shall bind MTD LLC. During the period of the warranty, the exclusive remedy is repair or replacement of the product as set forth above.

The provisions as set forth in this warranty provide the sole and exclusive remedy arising from the sale. MTD LLC shall not be liable for incidental or consequential loss or damage including, without limitation, expenses incurred for substitute or replacement lawn care services or for rental expenses to temporarily replace a warranted product.

Some states do not allow the exclusion or limitation of incidental or consequential damages, or limitations on how long an implied warranty lasts, so the above exclusions or limitations may not apply to you.

In no event shall recovery of any kind be greater than the amount of the purchase price of the product sold. **Alteration of safety features of the product shall void this warranty.** You assume the risk and liability for loss, damage, or injury to you and your property and/or to others and their property arising out of the misuse or inability to use the product.

This limited warranty shall not extend to anyone other than the original purchaser or to the person for whom it was purchased as a gift.

HOW STATE LAW RELATES TO THIS WARRANTY: This limited warranty gives you specific legal rights, and you may also have other rights which vary from state to state.

MTD LLC, P.O. BOX 361131 CLEVELAND, OHIO 44136-0019 1-800-800-7310