

Smooth Tread Front Tire Kit For Zero-Turn-Radius Riding Mowers

Model No. 110-6739

Installation Instructions

Note: Determine the left and right sides of the machine from the normal operating position.

1. Remove the bolt and nut attaching the existing caster wheel to the fork (Figure 1).
2. Remove the spanner from the existing wheel and insert the spanner into the smooth tire wheel (Figure 1).
3. Attach the smooth tire wheel to the caster fork with the existing bolt and nut (Figure 1). Torque the fasteners to 67-83 in-lb (7.3-9.7 N·m).
4. Repeat the procedure with the other caster wheel.

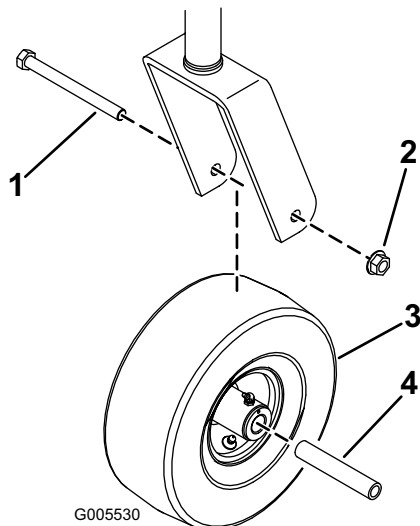


Figure 1

- | | |
|---------|----------------------|
| 1. Bolt | 3. Smooth tire wheel |
| 2. Nut | 4. Spanner |