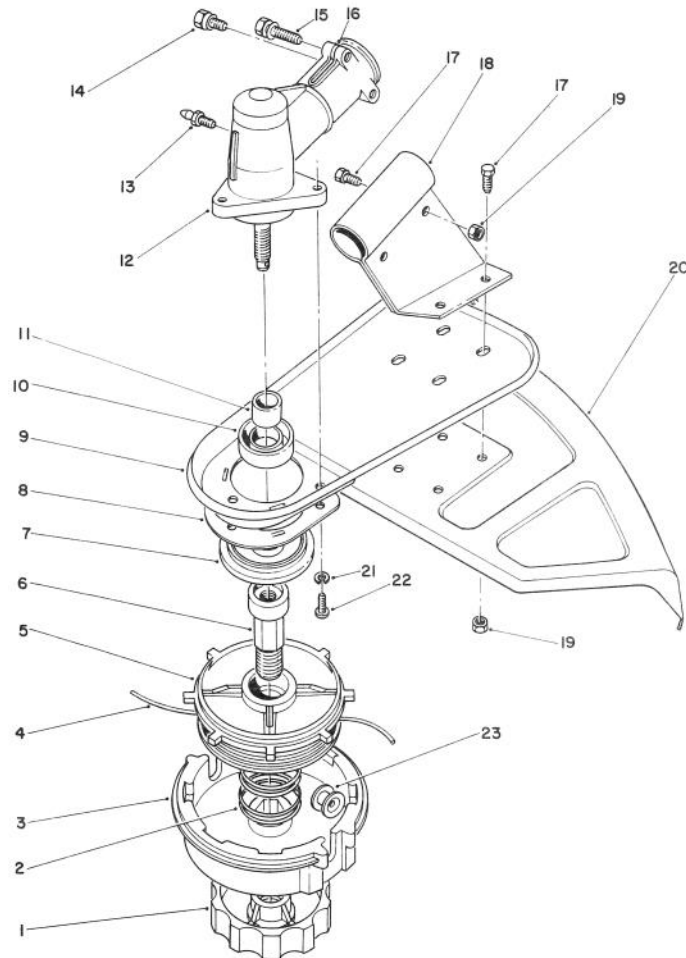




MODEL NO. 51665-1000001 & UP

PARTS CATALOG

TC 3510 GAS TRIMMER



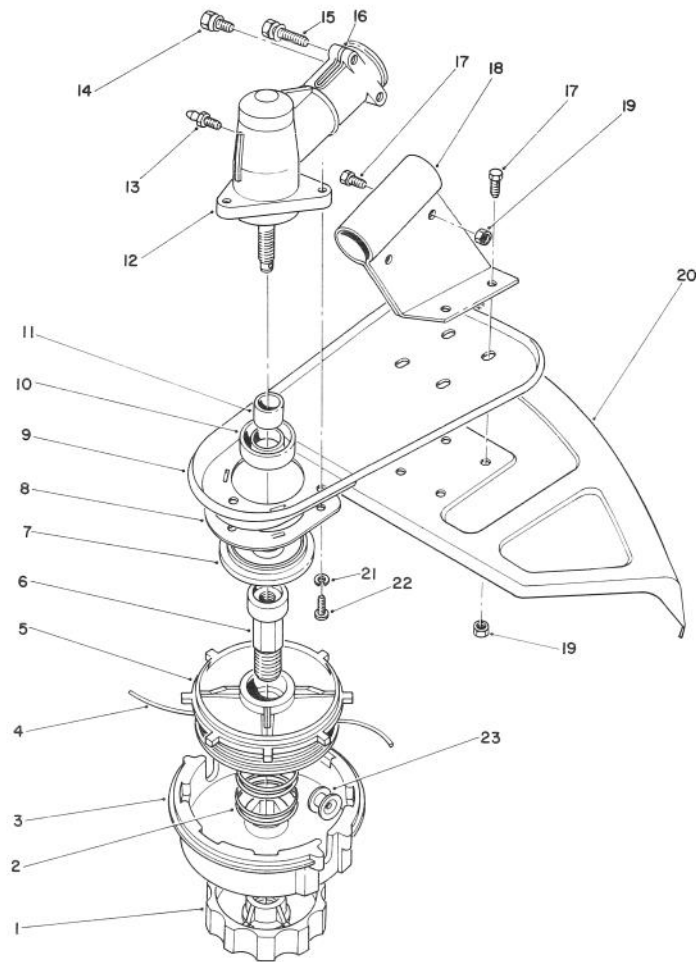
C-0223

CUTTER HEAD & GEAR BOX ASSEMBLY

Ref. No.	Part No.	Description	No. Used
1	57-5580	Knob - L.H.	1
2	57-5620	Spring	1
3	57-5600	Spool Housing Assembly	1
4		Line - Cutting .105 Dia. 11'	1
*	43-5000	Line - Cutting .08 Dia. (38' Optional)	1
*	46-2710	Line - Cutting .08 Dia. (405' 1Lb. Optional)	1
*	41-6820	Line - Cutting .095 Dia. (285' 1 Lb. Optional)	1
*	46-2730	Line Cutting .105 Dia. (235' 1Lb. Optional)	1
*	52-5070	Line - Cutting .105 Dia. (20' Optional)	1

Ref. No.	Part No.	Description	No. Used
*	46-2740	Line - Cutting .130 Dia. (465' 3Lb. Optional)	1
5	57-5590	Spool - Inner	1
6	57-5610	Shaft	1
7	48-2080	Cap - Dust	1
8	57-5540	Guard - Grass Wrap	1
9	47-2800	Support - Shield	1
10	48-2090	Seal - Oil	1
11	48-2100	Sleeve - Spline	1
12	52-5710	Gear Box Assembly (Incl. Ref.#10,11, & 13-16)	1
13	53-7410	Fitting - Grease	1
14	48-2150	Screw - Hex. Hd.	1
15	48-2130	Screw - Hex. Hd.	2

*Not Illustrated



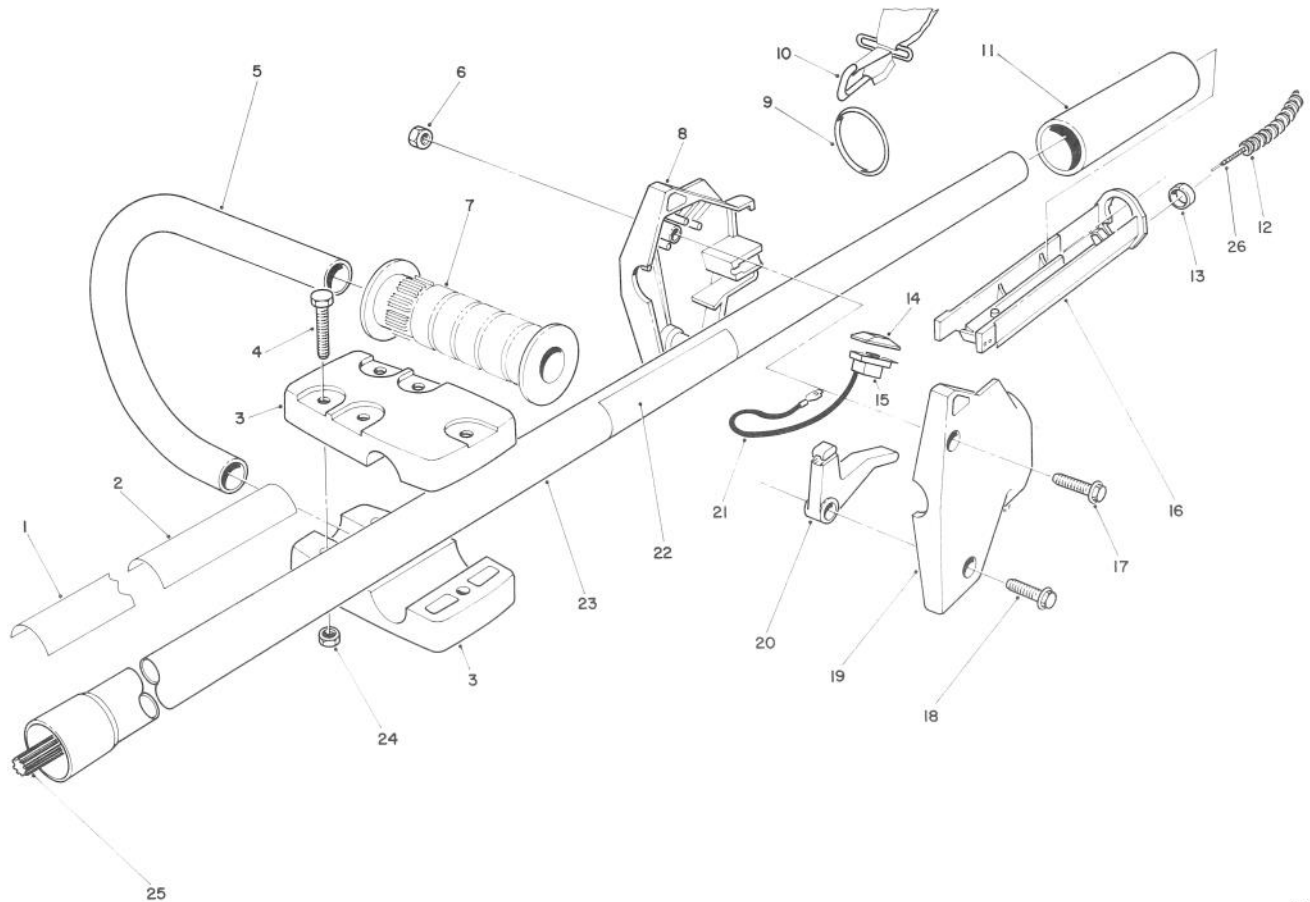
C-0223

CUTTER HEAD & GEAR BOX ASSEMBLY (continued)

Ref. No.	Part No.	Description	No. Used
16	48-2140	Washer - Flat	2
17	32105-8	Screw - Hex. Hd.	6
18	47-2760	Bracket - Shield	1
19	3296-2	Nut - Lock	6
20	61-4570	Shield - Grass	1

Ref. No.	Part No.	Description	No. Used
21	55-8050	Washer - Lock	3
22	57-5550	Screw - Guard	3
23	57-5630	Eyelet	2
*	57-5670	Cutter Head Assembly (Incl. Ref.#1-6 & 23)	1

*Not Illustrated

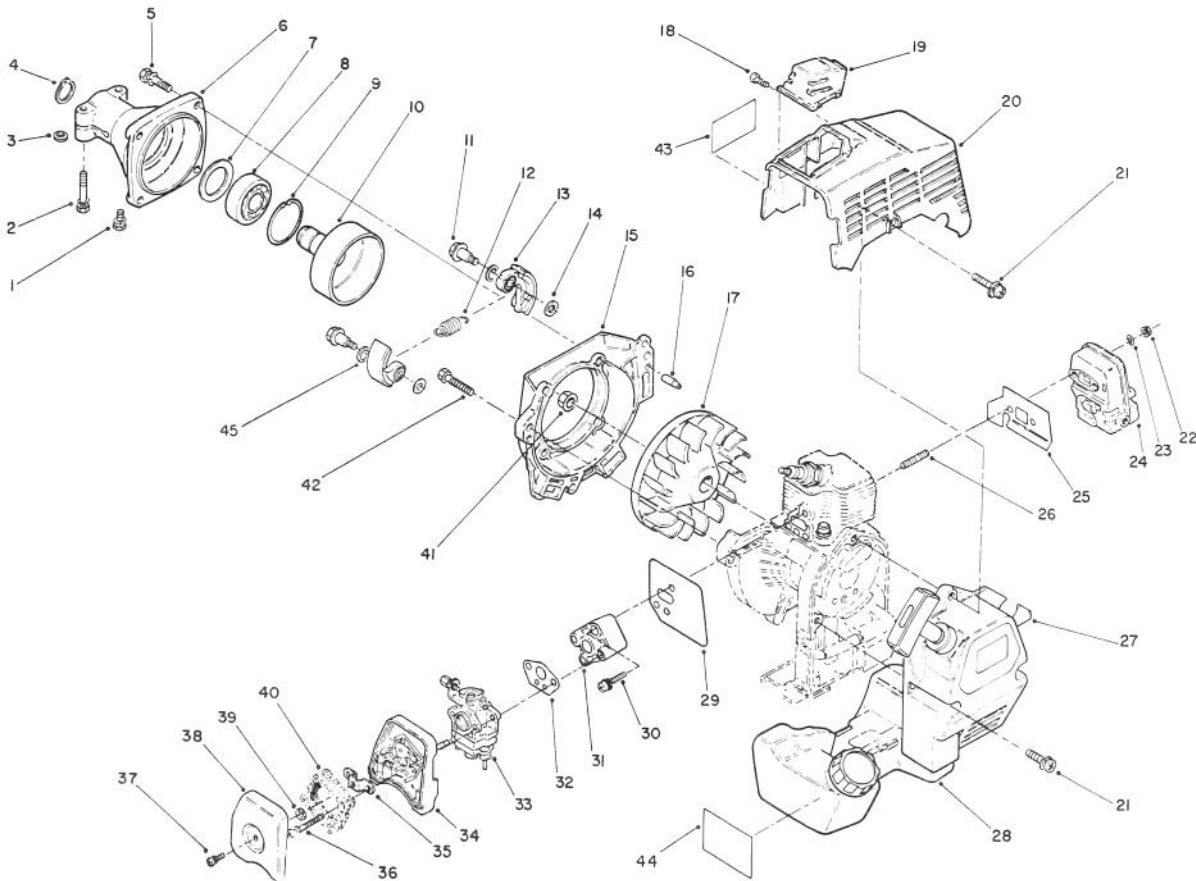


C-0224

HANDLE ASSEMBLY

Ref. No.	Part No.	Description	No. Used
1	76-4500	Decal - TC 3510	1
2	82-6060	Decal - Danger	1
3	53-7080	Clamp - Secondary	2
4	3290-360	Screw - Hex. Hd. Machine	5
5	61-4770	Handle - Secondary	1
6	3296-12	Nut - Lock	2
7	235-24	Grip - Handle	1
8	53-7250	Housing R.H.	1
9	44-7540	Ring - Harness	1
10	46-2951	Harness - Shoulder	1
11	53-7120	Grip - Drive Housing	1
12	55-8411	Cover - Cable	1
13	2412-48	Clip	2

Ref. No.	Part No.	Description	No. Used
14	218-507	Cap - Switch	1
15	42-6000	Switch	1
16	53-7290	Trough	1
17	32105-12	Screw - Hex. Hd.	1
18	32105-13	Screw - Hex. Hd.	1
19	53-7260	Housing L.H.	1
20	53-7270	Lever - Throttle	1
21	53-7370	Wire	2
22	83-6620	Decal - Instruction	1
23	61-4390	Tube Assembly	1
24	3296-2	Nut - Lock	5
25	53-7211	Shaft - Spline, Drive	1
26	76-4370	Cable - Throttle	1



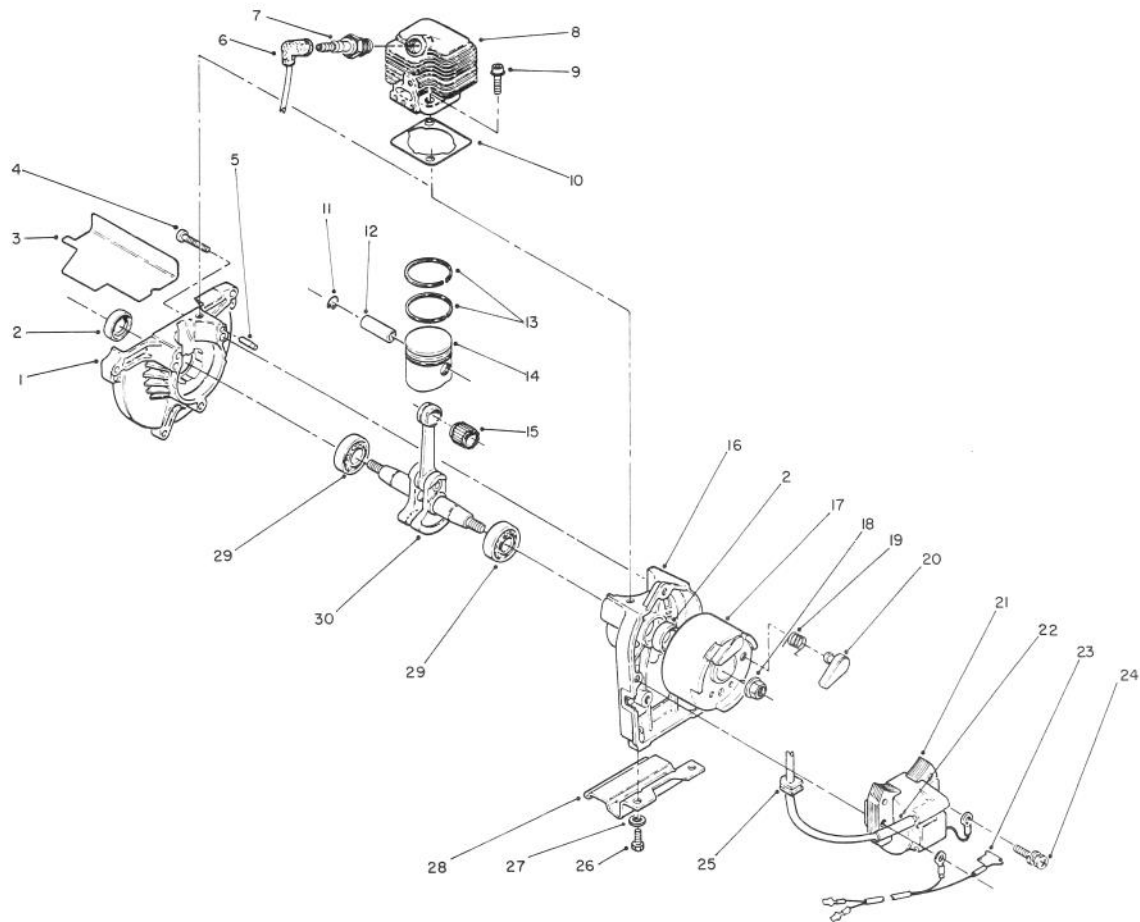
C-0581

ENGINE ASSEMBLY

Ref. No.	Part No.	Description	No. Used
1	65-2550	Screw/Washer	1
2	54-5740	Bolt/Washer	2
3	65-2540	Washer	2
4	54-5690	Ring - Retaining	1
5	54-5720	Bolt/Washer	4
6	65-2530	Case - Clutch	1
7	54-5700	Washer	1
8	54-5680	Bearing - Ball	1
9	54-5670	Ring - Retaining	1
10	54-6250	Drum - Clutch	1
11	82-6040	Bolt - Clutch	2
12	54-6230	Spring	1
13	54-6220	Flyweight	2
*	77-1830	Clutch Assembly (Incl. Ref.#12 &13)	1
14	77-1840	Washer	2
15	77-1100	Case - Fan	1
16	60-7590	Pin - Dowel	2
17	60-7780	Fan	1
18	54-6890	Screw	1
19	77-1190	Guard - Spark Plug	1
20	77-1230	Cover - Engine	1
21	77-1860	Screw/Washer	3
22	77-1790	Nut - Flange Lock	2

Ref. No.	Part No.	Description	No. Used
23	65-4410	Gasket	2
24	77-1800	Muffler Assembly	1
25	65-4410	Gasket - Muffler	1
26	77-1210	Stud	2
27	82-6180	Recoil Assembly	1
28	82-6190	Tank Assembly - Fuel	1
29	77-1460	Gasket - Insulator	1
30	60-7930	Screw/Washer	2
31	77-1450	Insulator	1
32	77-1430	Gasket - Carburetor	1
33	77-1420	Carburetor Assembly	1
34	77-1760	Case - Air Cleaner	1
35	77-1750	Bracket	1
36	54-4870	Screw/Washer	2
37	60-7680	Screw/Washer	1
38	77-1710	Cover - Air Cleaner	1
39	77-1720	Nut	1
40	77-1730	Element - Air Cleaner	1
41	54-4670	Nut - Conical	1
42	54-4790	Screw - Pan Hd.	3
43	65-2690	Decal - Hot	1
44	70-9930	Decal - Fuel Mix	1
45	82-6050	Washer - Wave	2
*		Engine TM24	1

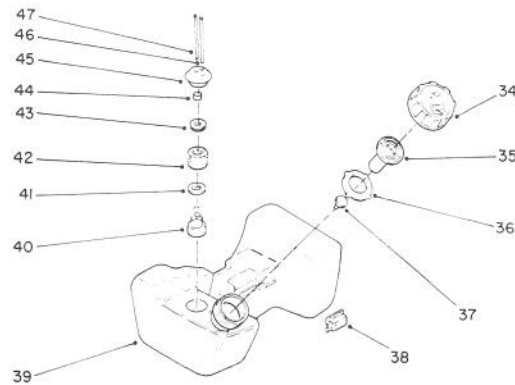
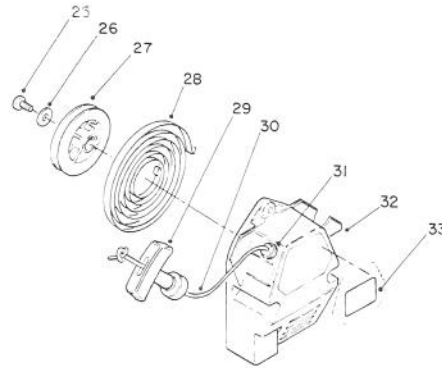
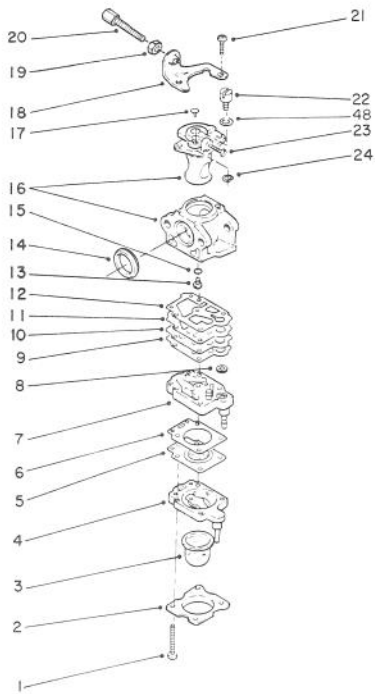
*Not Illustrated



C-0801

ENGINE ASSEMBLY (Continued)

Ref. No.	Part No.	Description	No. Used	Ref. No.	Part No.	Description	No. Used
1	77-1110	Case - Drive	1	16	60-7600	Case - Starter	1
2	54-4380	Seal - Oil	2	17	77-1360	Flywheel (Incl. Ref.#19 & 20)	1
3	82-6090	Gasket - Baffle	1	18	54-4670	Nut - Conical	1
4	54-4330	Screw - Pan Hd.	3	19	77-1370	Spring - Return	1
5	60-7590	Pin - Dowel	2	20	77-1380	Ratchet	1
6	77-1340	Boot - Plug	1	21	77-1400	Coil - Ignition	1
7	77-1350	Plug - Spark	1	22	77-2180	Tube	1
8	77-1240	Cylinder Head	1	23	77-2190	Wire Lead Assembly	1
9	60-7720	Bolt - Cylinder Head	2	24	54-4790	Bolt/Washer	2
10	60-7730	Gasket - Cylinder Head	1	25	60-7840	Grommet	1
11	54-5920	Clip - Piston Pin	2	26	46-0053	Screw	2
12	54-5910	Pin - Piston	1	27	3254-8	Washer - Lock	2
13	77-1260	Set - Piston Ring	1	28	82-6110	Stand	1
14	77-1270	Piston Ass'y (Incl.Ref.#12)	1	29	54-4360	Bearing - Main	2
15	54-5930	Bearing - Needle	1	30	77-1330	Crankshaft Assembly	1



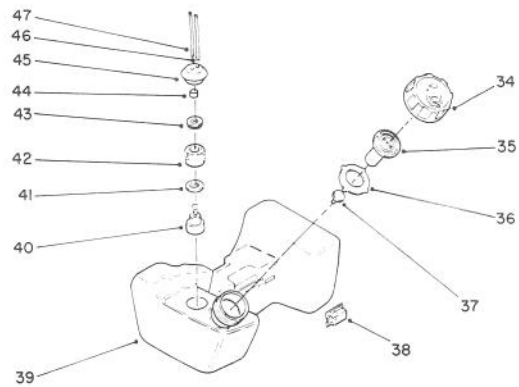
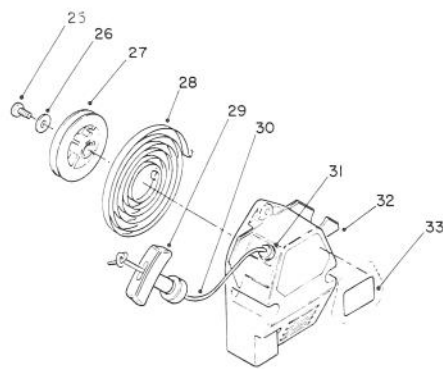
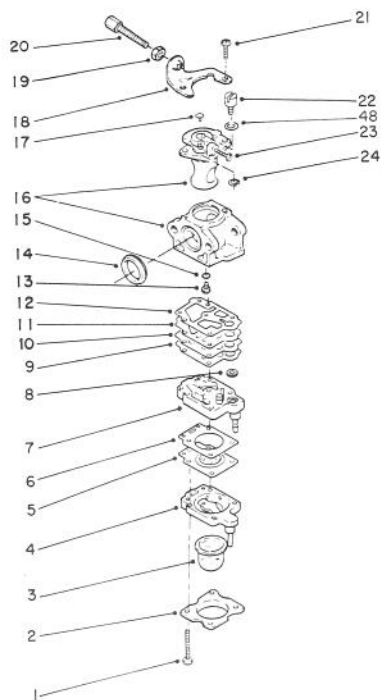
ENGINE ASSEMBLY (Continued)

C-0585

Ref. No.	Part No.	Description	No. Used
1	77-1690	Screw	4
2	77-1680	Cover - Primer	1
3	77-1670	Bulb - Primer	1
4	77-1660	Body - Primer	1
5	77-1650	Diaphragm	1
6	77-1640	Gasket - Diaphragm	1
7	77-1630	Body Ass'y - Pump (Incl. Ref. #8)	1
8	77-1620	Screen	1
9	77-1610	Gasket - Pump	1
10	77-1600	Plate	1
11	77-1590	Diaphragm	1
12	77-1580	Gasket - Diaphragm	1
13	77-1570	Jet - Main #43	1
*	82-2540	Jet - High Altitude #41	1
14	77-1550	Gasket	1
15	77-1560	"O" Ring - Main Jet	1
16		Body - Carburetor(Ref.)	1
17	77-1530	Plug	1
18	77-1490	Bracket - Throttle	1
19	77-1480	Nut - Lock	1

Ref. No.	Part No.	Description	No. Used
20	77-1470	Screw - Adjustment	1
21	77-1500	Screw	1
22	77-1510	Swivel - Cable	1
23	77-1540	Valve - Throttle	1
24	77-1520	Clip	1
*	77-1420	Carburetor Assembly (Incl. Ref. #1-24 & 48)	1
*	77-2110	Kit - Carburetor Repair (Incl. Ref. #5,6,8,9,11-15 & #32 page 4)	1
25	60-8220	Screw	1
26	65-4470	Washer	1
27	60-8230	Reel	1
28	54-5420	Spring	1
29	54-5440	Handle - Recoil	1
30	54-6370	Rope - Recoil	1
31	77-1930	Guide - Rope	1
32	82-6170	Case - Recoil	1
33	76-0790	Decal - Toro	1
*	82-6180	Recoil Assembly (Incl. Ref. #25-32)	1

*Not Illustrated



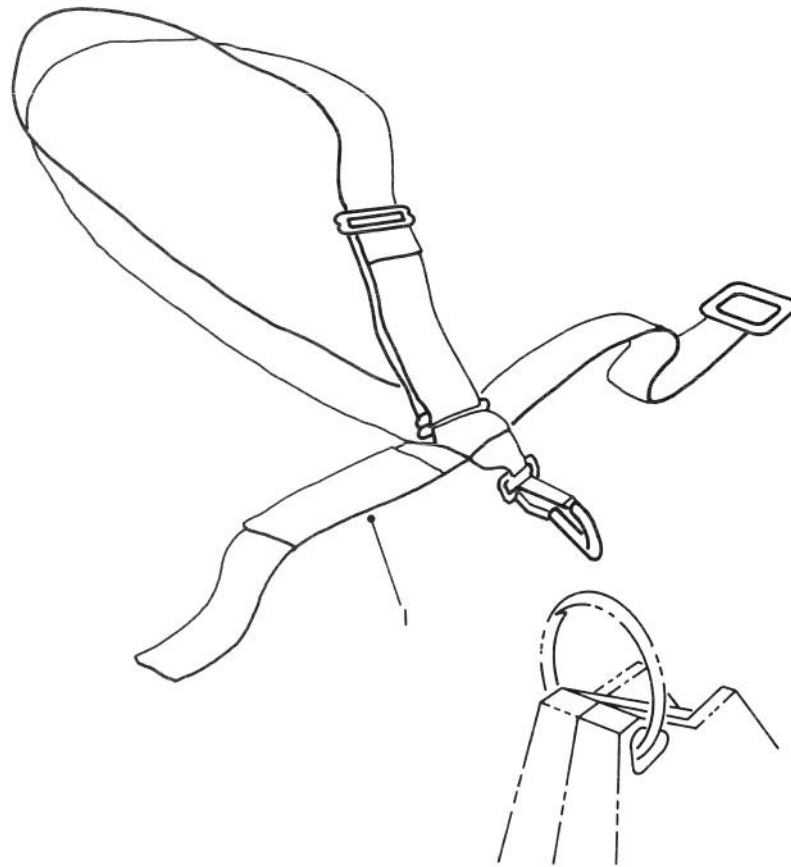
C-0585

ENGINE ASSEMBLY (Continued)

Ref. No.	Part No.	Description	No. Used
34	77-1990	Cap - Fuel	1
35	77-2000	Valve - Breather	1
36	77-2010	Gasket	1
37	77-2020	Cap - Valve	1
*	77-1980	Cap Assembly (Incl. Ref. #34-37)	1
38	60-8280	Pad	4
39	82-6190	Tank Assembly - Fuel (Incl. Ref. #34-37 & 40-47)	1
40	77-2070	Weight - Filter	1

Ref. No.	Part No.	Description	No. Used
41	77-2060	Washer - Seal	1
42	77-2050	Filter - Fuel	1
43	77-2040	Washer - Seal	1
44	77-1970	Collar	1
45	77-2030	Grommet - Fuel Tank	1
46	54-6390	Hose - Fuel	1
47	77-1960	Tube - Fuel Return	1
48	77-9900	Washer	1
*	77-2100	Filter Assembly - Fuel (Incl. Ref. #40-44)	1

*Not Illustrated

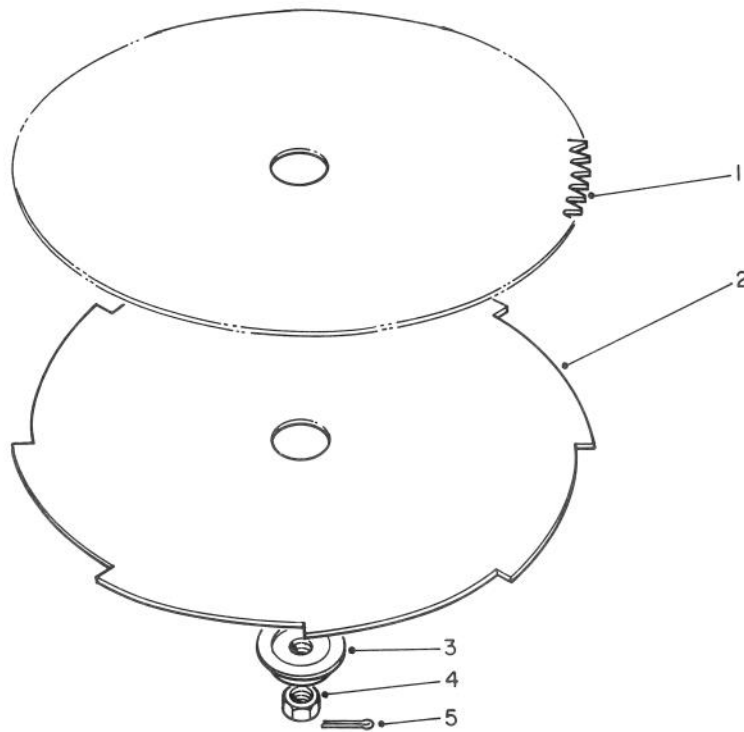


C-0217

DELUXE SHOULDER/WAIST BELT HARNESS (Optional)

Ref. No.	Part No.	Description	No. Used
1	46-2961	Deluxe Harness	1

Ref. No.	Part No.	Description	No. Used

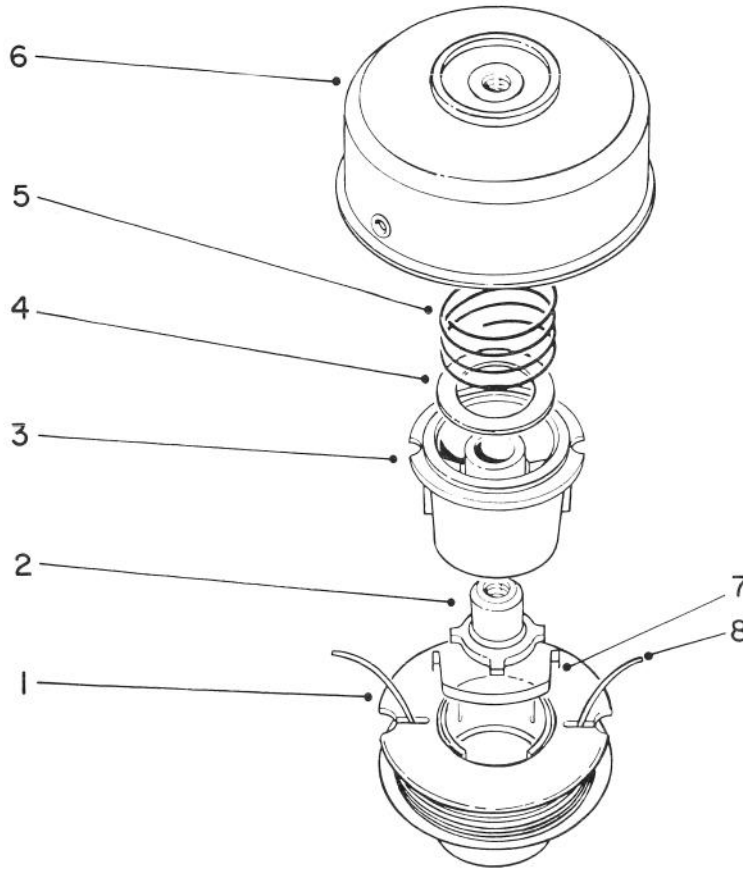


C-0218

SAW AND BRUSH BLADE KIT (Optional)

Ref. No.	Part No.	Description	No. Used	Ref. No.	Part No.	Description	No. Used
1	51-1230	8''Dia.Blade (80 Tooth)	1	5	3272-3	Pin Cotter	1
2	51-1240	8''Dia.Blade (8 Tooth)	1	*	41-4440	Blade Adapter Kit (Incl. Ref. #3-5)	1
3		Adapter - Blade	1				
4	41-5410	Nut L.H.	1				

*Not Illustrated



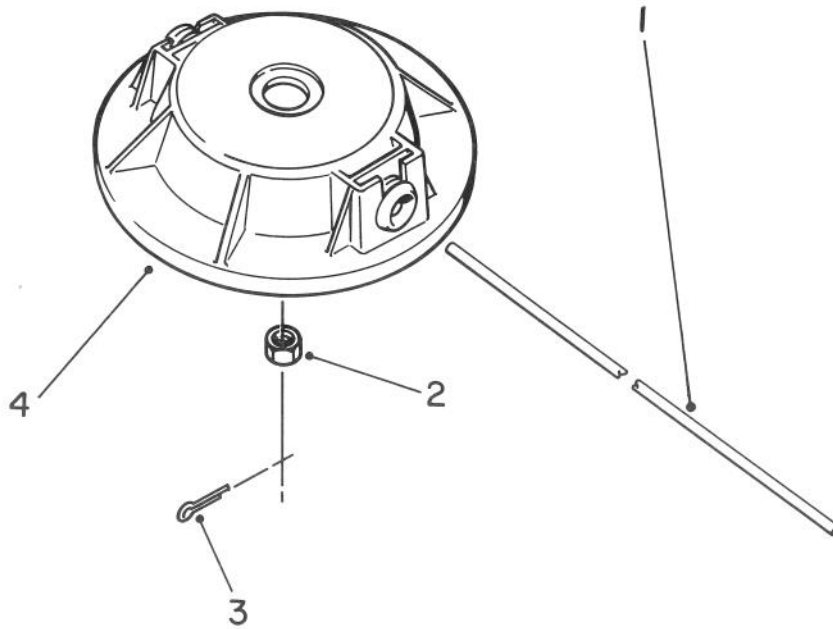
C-0797

DUAL LINE BUMP & FEED CUTTER HEAD(Optional)

Ref. No.	Part No.	Description	No. Used
1	83-4650	Spool Prewound .08 Dia 38' (Incl.Ref.#7)	1
2	61-4560	Driver L.H.	1
3	33-6230	Spool Core	1
4	3256-42	Washer	1
5	33-6460	Spring	1
6	46-2650	Drum w/Eyelets	1
7	33-8940	Saddle - Spool Cap	1

Ref. No.	Part No.	Description	No. Used
8		Line - Cutting .08 Dia. 38'	1
*	43-5000	Line - Cutting .08 Dia. (38' Optional)	1
*	46-2710	Line - Cutting .08 Dia. (40' Optional)	1
*	83-4610	Cutter Head Assembly (Incl. Ref. #1-8)	1

* Not Illustrated

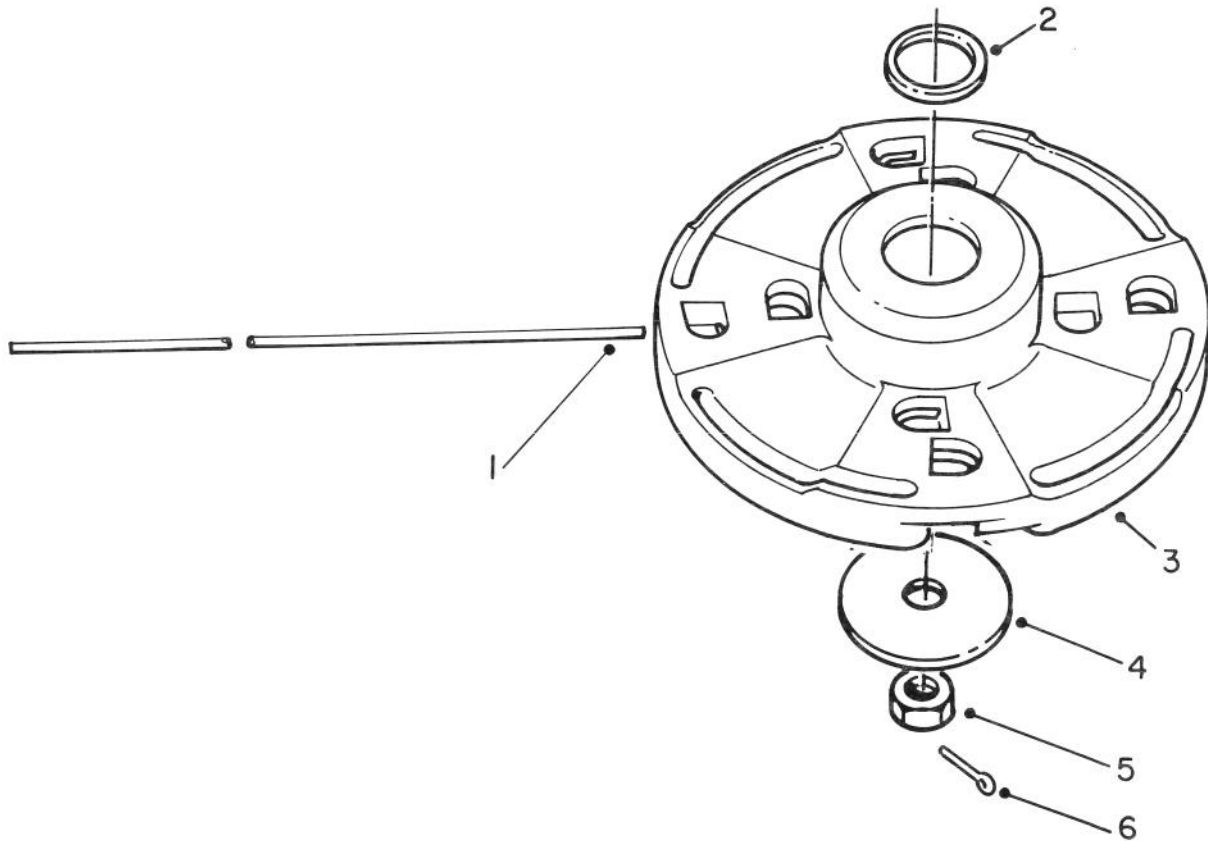


C-0220

NON – METALLIC FIXED LINE CUTTER HEAD (Optional)

Ref. No.	Part No.	Description	No. Used	Ref. No.	Part No.	Description	No. Used
1		Line – Cutting	1	*	52-5070	Line – Cutting .105 Dia (20' Optional)	1
*	47-2260	Line – Cutting .105 Dia. (100 Pcs. Optional)	1	2	41-5410	Nut L.H.	1
*	46-2730	Line – Cutting .105 Dia. (235' 1 Lb. Optional)	1	3	3272-3	Pin – Cotter	1
				4	51-2760	Cutter Head Assembly	1

* Not Illustrated



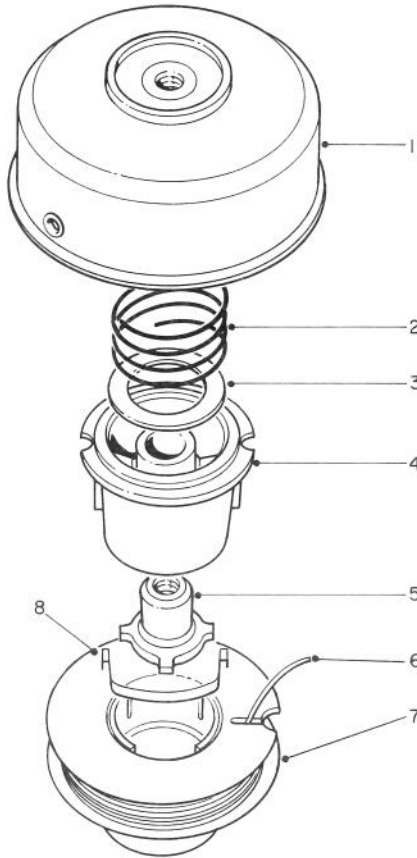
C-0221

METALLIC FIXED LINE CUTTER HEAD (Optional)

Ref. No.	Part No.	Description	No. Used
1		Line - Cutting	1
*	47-2260	Line - Cutting .105 Dia. (100 Pcs. Optional)	1
*	46-2730	Line - Cutting .105 Dia. (235' 1 Lb. Optional)	1
*	52-5070	Line - Cutting .105 Dia. (20' 3 Lb. Optional)	1
*	42-0580	Line - Cutting .13 Dia. (100 Pcs. Optional)	1

Ref. No.	Part No.	Description	No. Used
*	46-2740	Line - Cutting .13 Dia. (465' 3 Lb. Optional)	1
2	44-6950	Spacer	1
3	46-2810	Head Assembly (Incl.Ref.#2)	1
4	41-4430	Washer - Plate	1
5	41-5410	Nut L.H.	1
6	3272-3	Pin - Cotter	1

* Not Illustrated



C-0789

SINGLE LINE BUMP & FEED CUTTER HEAD (Optional)

Ref. No.	Part No.	Description	No. Used	Ref. No.	Part No.	Description	No. Used
1	83-4600	Drum/Eyelet	1	7	83-4660	Spool Prewound .095 Dia. 30' (Incl. Ref. #8)	1
2	33-6460	Spring	1	8	33-8940	Saddle - Spool Cap	1
3	3256-42	Washer	1	*	83-4600	Cutter Head Assembly (Incl. Ref. #1-7)	1
4	33-6230	Core - Spool	1				
5	61-4560	Driver L.H.	1				
6		Line Cutting .095 Dia.	1				
*	41-6820	Line Cutting .095 Dia. (285' Optional)	1				

* Not Illustrated

PRODUCT CHANGES

In an effort to make improvements available to TORO owners as quickly as possible, minor changes are incorporated into Toro's products from time to time that do not become immediately shown in the Parts Catalog. If such a change has been made in your unit, which is not reflected in your manual, see your TORO Distributor or his Authorized TORO Service Dealer for information and part numbers.

COUNTRIES OTHER THAN THE UNITED STATES OR CANADA

Customers who have purchased TORO products exported from the United States or Canada should contact their Toro Distributor (Dealer) to obtain guarantee policies for your country, province or state. If for any

reason you are dissatisfied with your Distributor's service or have difficulty obtaining guarantee information, contact the TORO importer. If all other remedies fail, you may contact us at The Toro Company.

MAINTENANCE RECORD

Date								

Compliance with Radio Interference Regulations Certified.
Certifie Conforme au Reglement sur le Brouillage Radioelectrique.

MAINTENANCE RECORD

Date								

